

V&V Reference Report

L2 ASCDS Version : 8.4.5

Observation 14388 - L2 Version 1
Chandra X-Ray Center

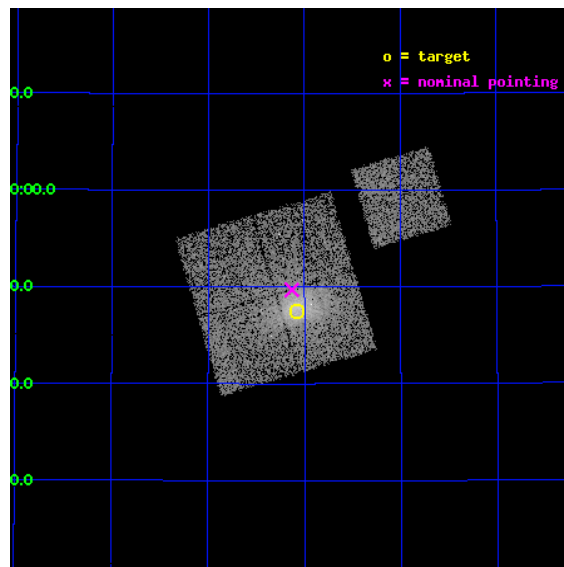
L2 Processing Date : Sep 1 2012

Contents

1	Front	2
2	OBI	3
2.1	OBI	3
2.1.1	Images	3
2.1.2	Bias	3
2.1.3	Parameters	4
2.1.4	Events	4
2.2	Compared Parameters	5
2.3	Aspect	6
2.4	Star Slots	9
2.4.1	Slot 3	9
2.4.2	Slot 4	10
2.4.3	Slot 5	11
2.4.4	Slot 6	12
2.4.5	Slot 7	13
2.5	FID Slots	14
2.5.1	Slot 0	14
2.5.2	Slot 1	15
2.5.3	Slot 2	16
A	Summary	17
A.1	Status	17
A.2	Comments	17

1 Front

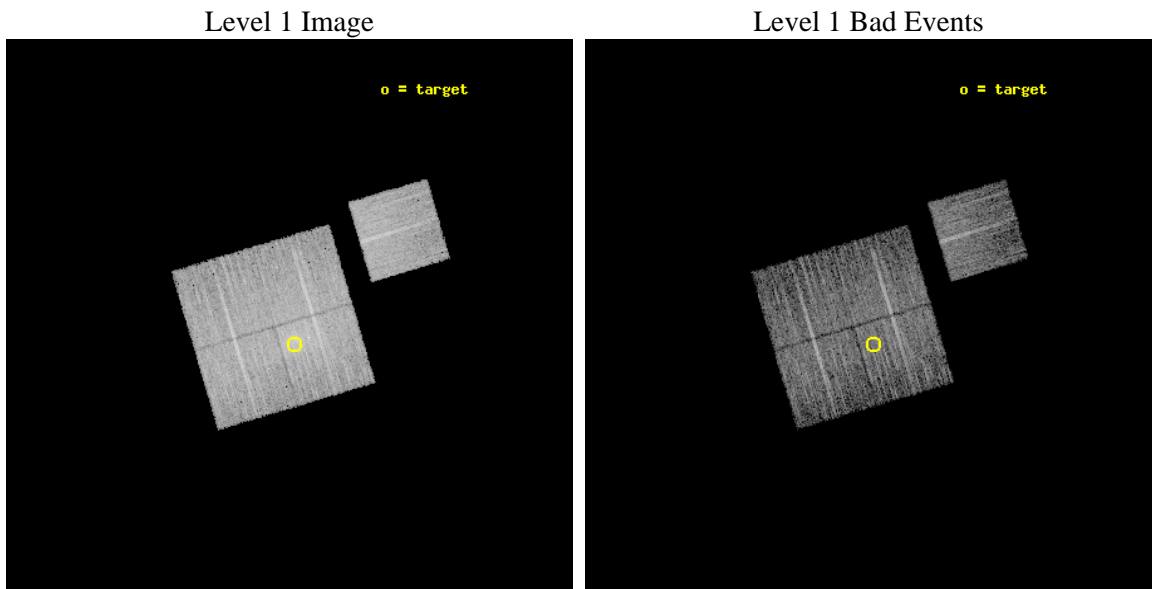
seq_num	801213	Sequence number
obs_id	14388	Observation id
title	Characterizing the Most Massive Clusters in the Local Universe - B	
observer	Dr. Stephen Murray	Principal investigator
object	G167.65+17.64	Source name
dtcycle	0	
cycle	P	events from which exps? Prim/Second/Both
ra_targ	99.52	Observer's specified target RA [deg]
dec_targ	47.791722	Observer's specified target Dec [deg]
ra_nom	99.532649444916	Nominal RA [deg]
dec_nom	47.828512244549	Nominal Dec [deg]
roll_nom	73.462646475517	Nominal Roll [deg]
revision	1	Processing version of data
ontime	10078.059077322	Sum of GTIs [s]
livetime	9946.3818161181	Livetime [s]
ontime0	10081.200077534	Sum of GTIs [s]
ontime1	10074.918116748	Sum of GTIs [s]
ontime2	10081.200077534	Sum of GTIs [s]
ontime3	10078.059077322	Sum of GTIs [s]
ontime6	10081.200077534	Sum of GTIs [s]
l2events	37701	Number of level 2 events



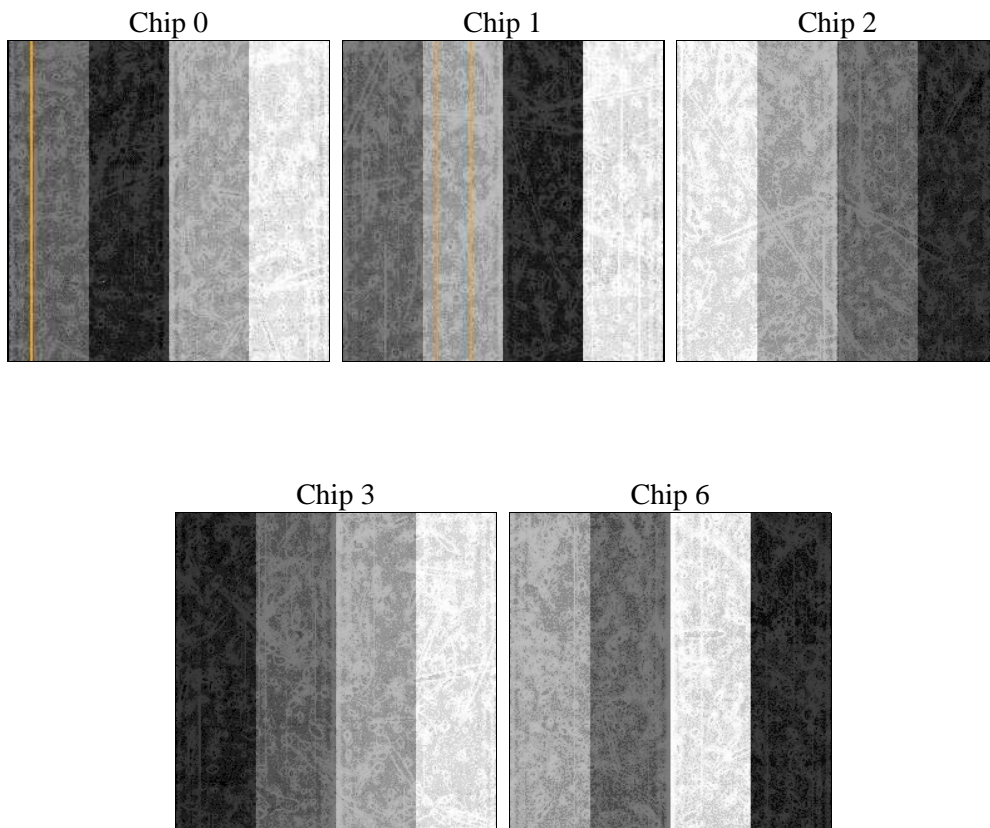
2 OBI

2.1 OBI

2.1.1 Images



2.1.2 Bias



2.1.3 Parameters

obi_num	0	Obi number	sched_exp_time	10000.000000	[s] Scheduled observation exposure time
ascdsver	8.4.5	Processing system revision	ontime	10078.059077322	Sum of GTIs [s]
caldsver	4.5.1.1	 	ontime0	10081.200077534	Sum of GTIs [s]
date	2012-09-01T18:22:04	Date and time of file creation	ontime1	10074.918116748	Sum of GTIs [s]
revision	1	Processing version of data	ontime2	10081.200077534	Sum of GTIs [s]
			ontime3	10078.059077322	Sum of GTIs [s]
			ontime6	10081.200077534	Sum of GTIs [s]
			l1events	270486	Number of level 1 events

2.1.4 Events

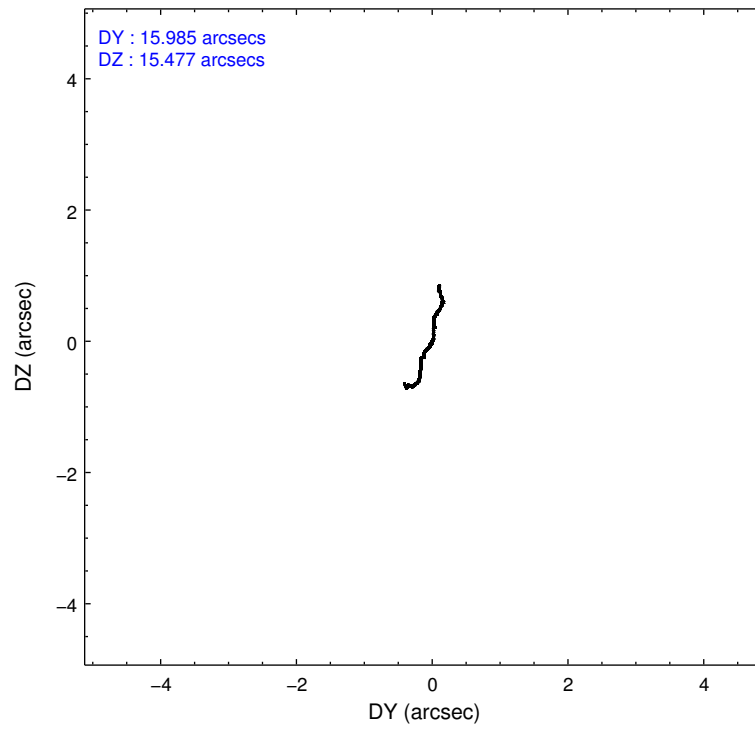
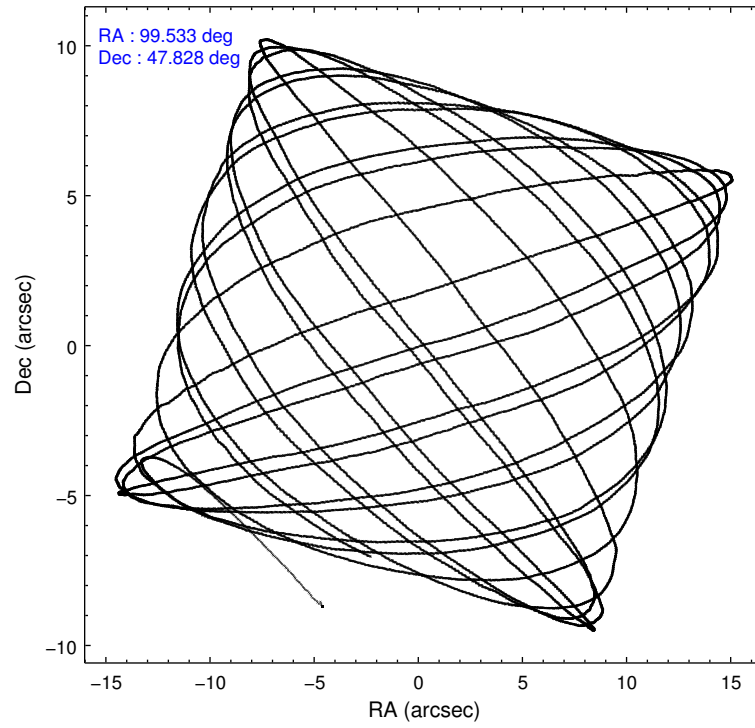
	ccd 0	ccd 1	ccd 2	ccd 3	ccd 6
level 1 events	49008	53406	52696	61798	53578
rejected events	42245	44858	45840	47475	47015
rejected %	86%	83%	86%	76%	87%

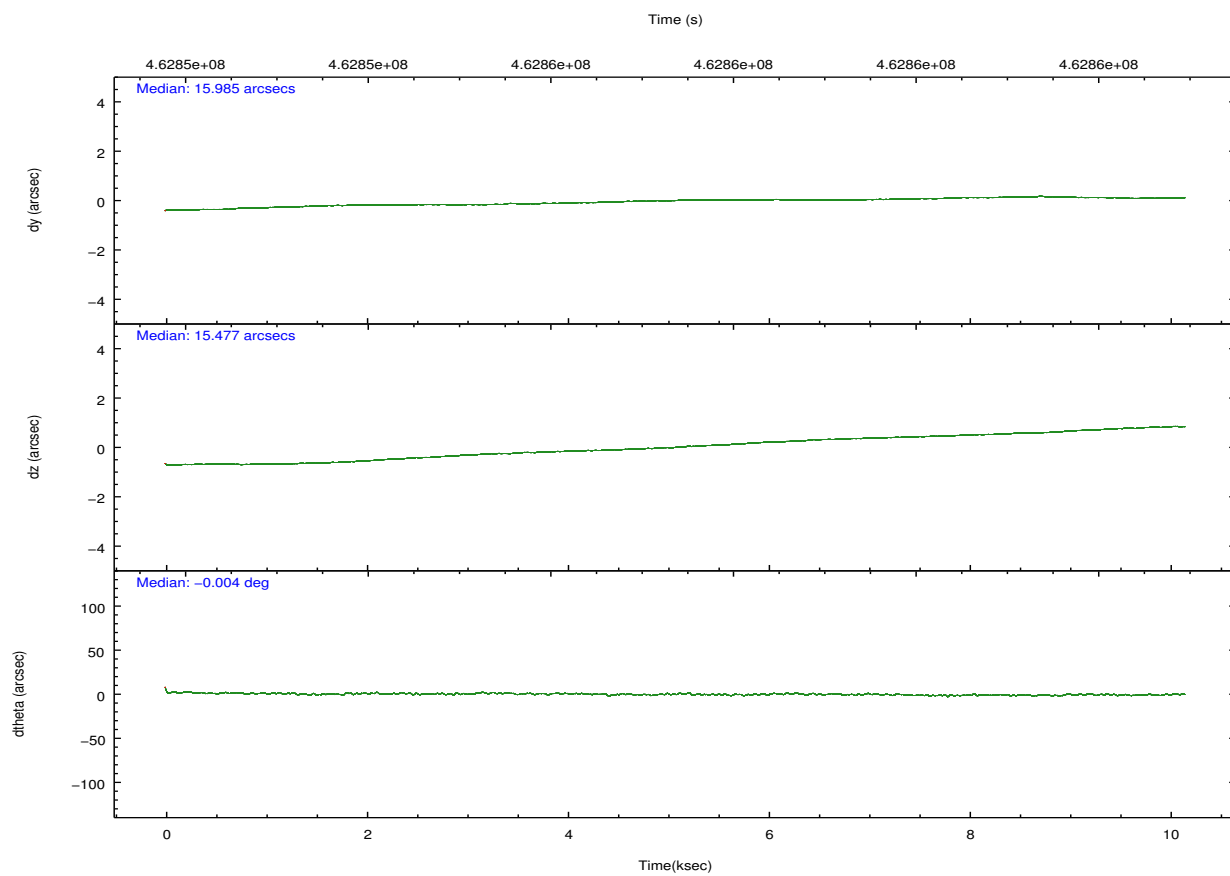
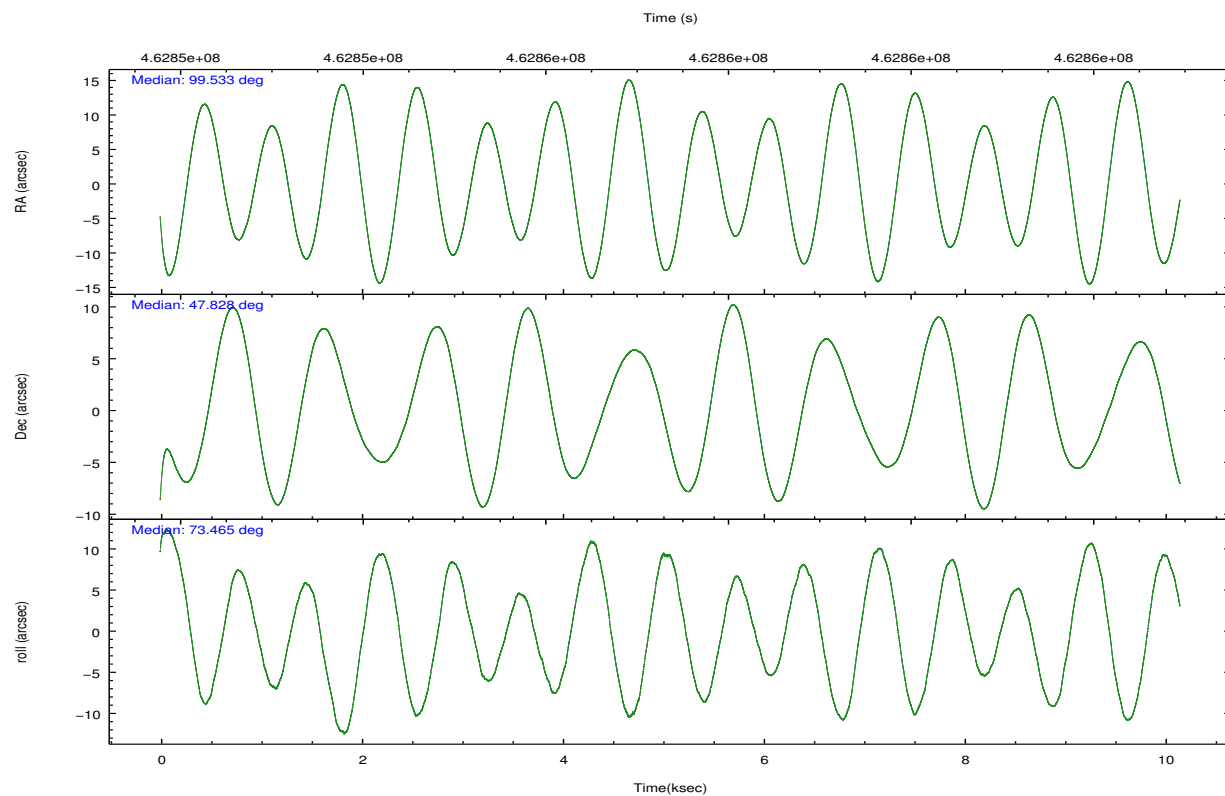
	ccd 0	ccd 1	ccd 2	ccd 3	ccd 6
grade 0 events	2441	3576	2871	8830	2183
	4%	6%	5%	14%	4%
grade 1 events	30	27	37	64	27
	0%	0%	0%	0%	0%
grade 2 events	1642	1938	1498	2173	1462
	3%	3%	2%	3%	2%
grade 3 events	667	733	647	918	659
	1%	1%	1%	1%	1%
grade 4 events	660	747	636	911	700
	1%	1%	1%	1%	1%
grade 5 events	2419	2731	2327	2753	2670
	4%	5%	4%	4%	4%
grade 6 events	1356	1559	1204	1496	1561
	2%	2%	2%	2%	2%
grade 7 events	39793	42095	43476	44653	44316
	81%	78%	82%	72%	82%

2.2 Compared Parameters

Parameter	Planned	Actual	Parameter	Planned	Actual
Instrument	ACIS	ACIS	Obspar format version number	7	7
Detector	ACIS-01236	ACIS-01236	Obspar file type	PREDICTED	ACTUAL
Grating	NONE	NONE	Obspar update status	NONE	UPDATED
Data mode	VFAINT	VFAINT	CCD I0 on	Y	Y
Observation mode	POINTING	POINTING	CCD I1 on	Y	Y
[deg] Pointing RA	99.542406	99.53264944491596	CCD I2 on	Y	Y
[deg] Pointing Dec	47.801817	47.82851224454878	CCD I3 on	Y	Y
[deg] Pointing Roll	73.246728	73.46264647551726	CCD S0 on	N	N
[mm] SIM focus pos	-0.782348	-0.7809083437167272	CCD S1 on	N	N
[mm] SIM defocus	0	0.001439871863259334	CCD S2 on	O1	Y
[mm] SIM translation stage pos	-230.592463	-230.5903706213692	CCD S3 on	N	N
[mm] SIM translation stage offset	-3	-3.002082381560513	CCD S4 on	N	N
[s] Observation start time (MET)	462852424.184000	462851153.71284	CCD S5 on	N	N
Observation start date	2012-09-01T02:05:57	2012-09-01T01:45:53	Number of optional ACIS chips dropped	0	0
[s] Observation end time (MET)	462862424.184000	462863170.30099	On-chip summing requested	N	N
Observation end date	2012-09-01T04:52:37	2012-09-01T05:06:10	Subarray requested	NONE	NONE
Read mode	TIMED	TIMED	Alternating exposures requested	N	N
			[s] Primary exposure time	0.000000	3.1

2.3 Aspect



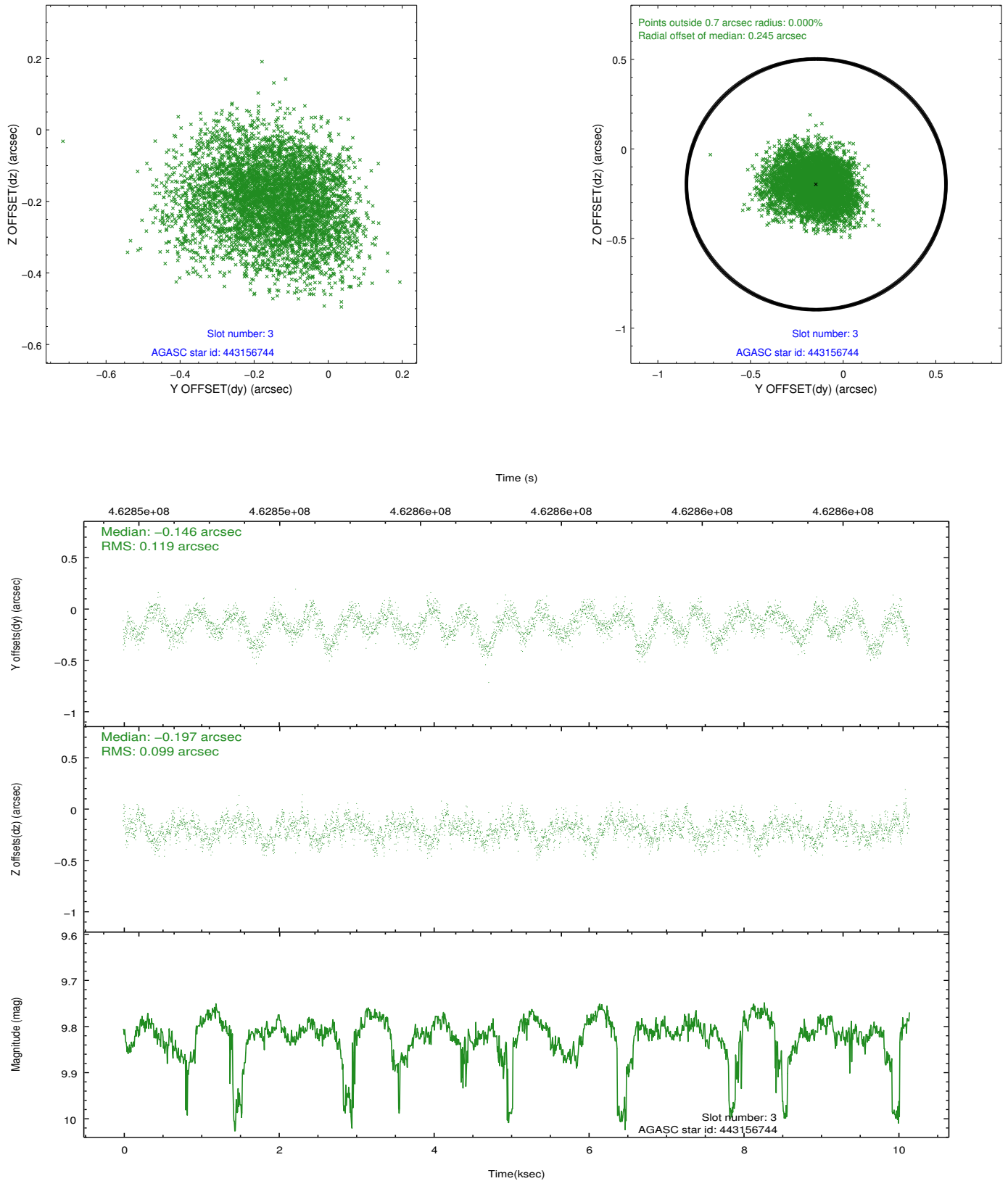


Slot Statistics

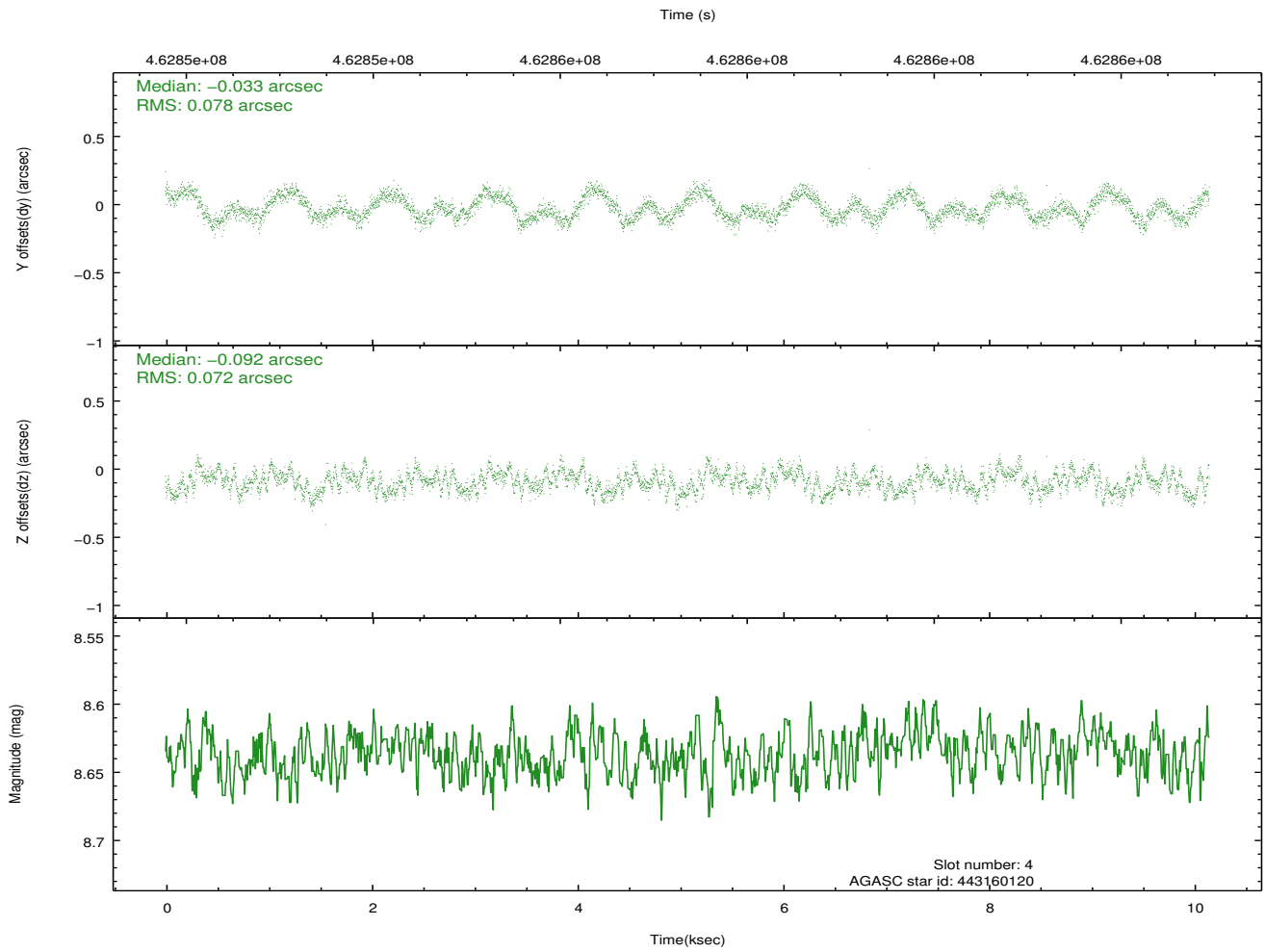
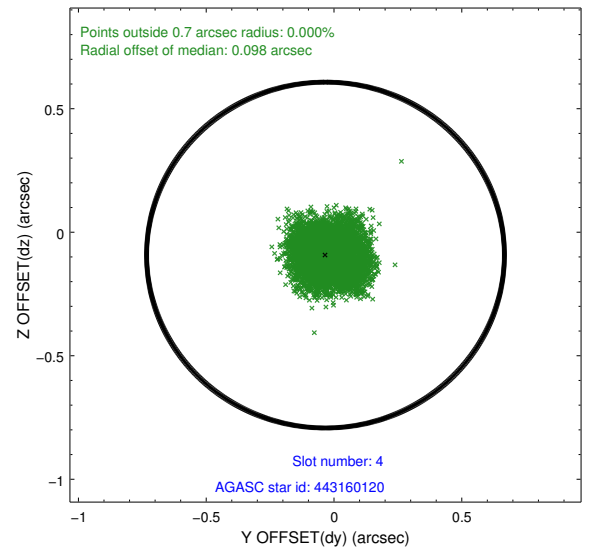
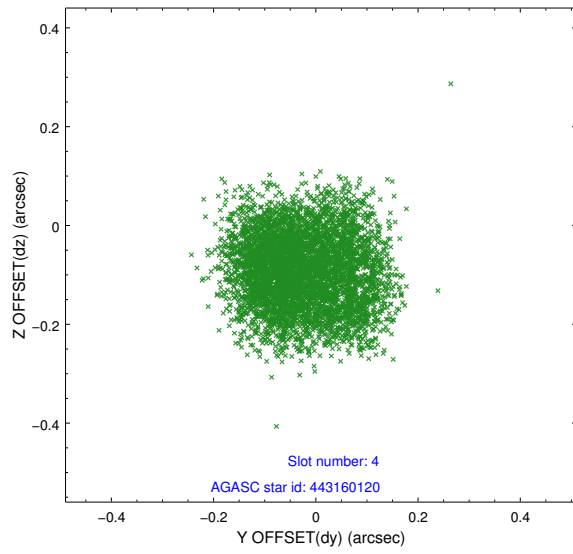
slot	status	id	mag	n_pts	med_dy	med_dz	dr1	dr2	ra	dec	mean_y	mean_z
0	FID	ACIS-I-2	7.05	2477	-0.133	-0.114	0.012	0.021	0.000000	0.000000	-770.99	-906.77
1	FID	ACIS-I-4	7.04	2477	0.217	0.106	0.008	0.014	0.000000	0.000000	2143.11	999.39
2	FID	ACIS-I-5	7.13	2477	-0.185	0.076	0.012	0.019	0.000000	0.000000	-1824.10	997.31
3	GUIDE	443156744	9.82	4923	-0.146	-0.197	0.168	0.262	99.081943	48.204012	1071.20	1475.87
4	GUIDE	443160120	8.64	4951	-0.033	-0.092	0.116	0.175	99.241520	48.104627	836.78	1007.40
5	GUIDE	443157400	8.59	4951	-0.266	0.003	0.152	0.226	99.498646	48.509270	2407.99	833.29
6	GUIDE	443161592	9.78	4949	0.581	0.233	0.348	0.466	99.748390	47.149060	-2103.14	-1159.70
7	GUIDE	443158096	9.78	4947	-0.159	0.004	0.196	0.298	100.164290	47.095901	-1988.87	-2190.54

2.4 Star Slots

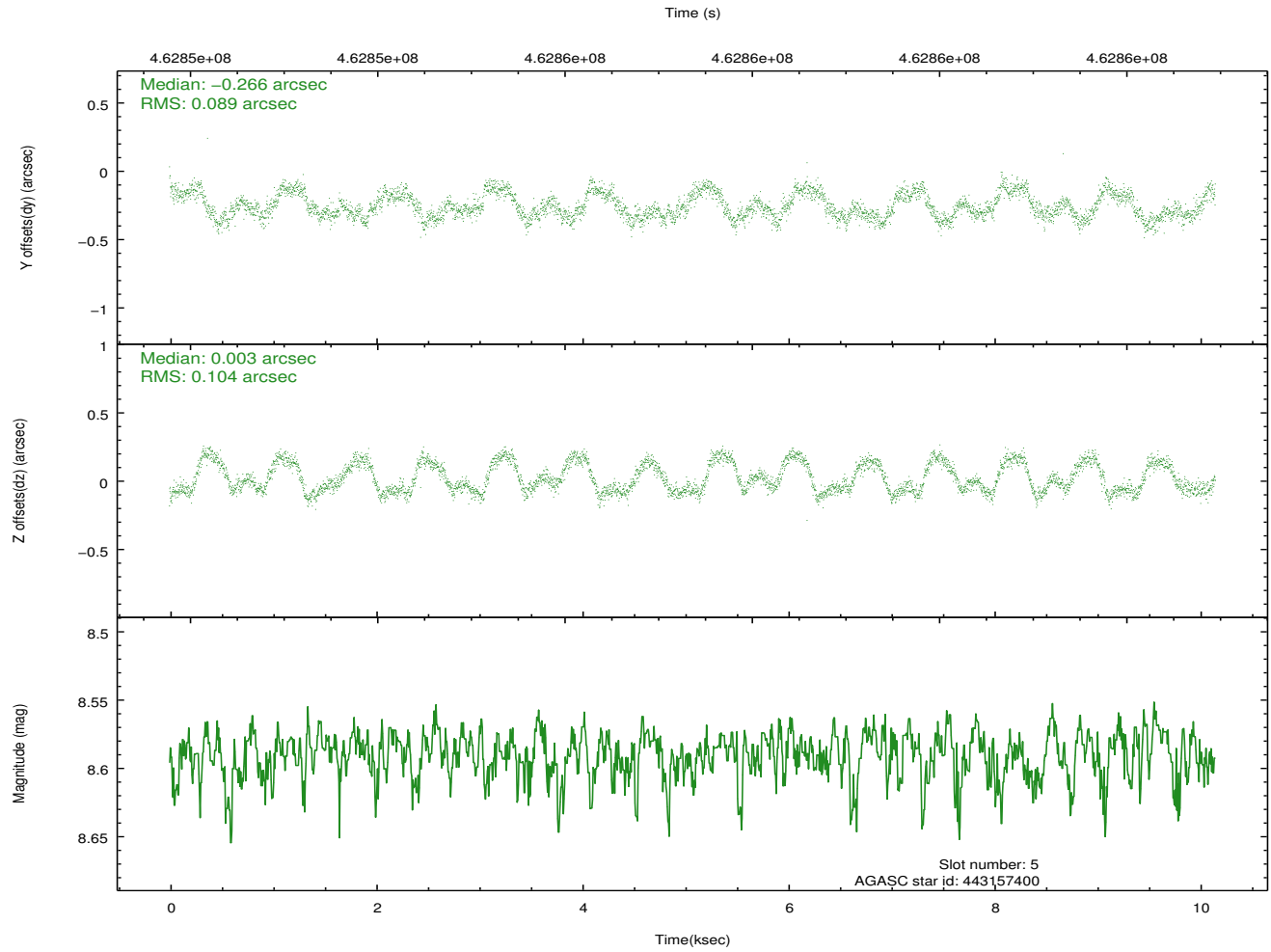
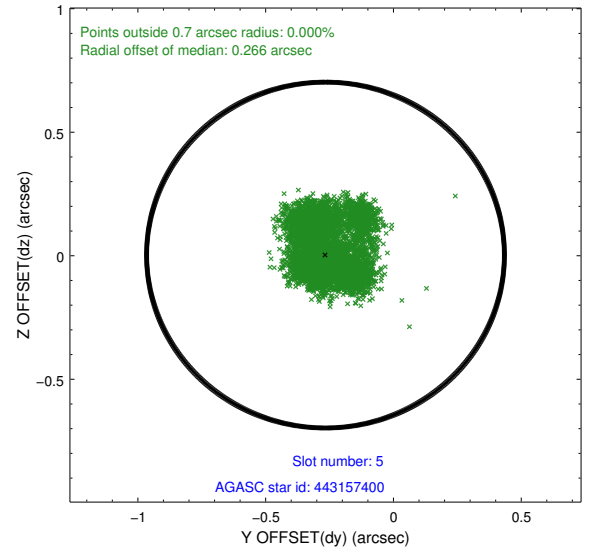
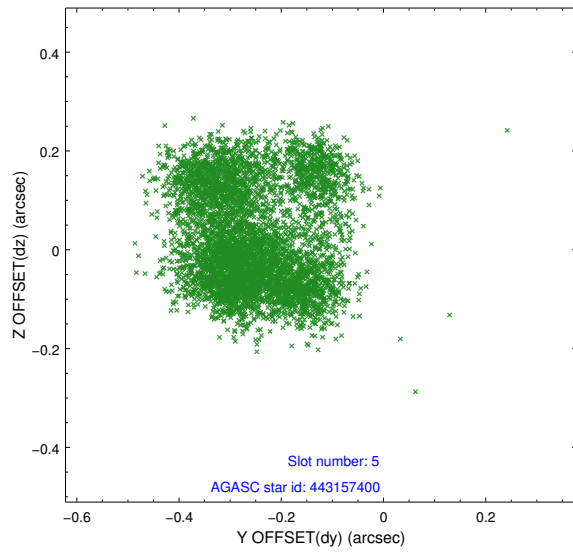
2.4.1 Slot 3



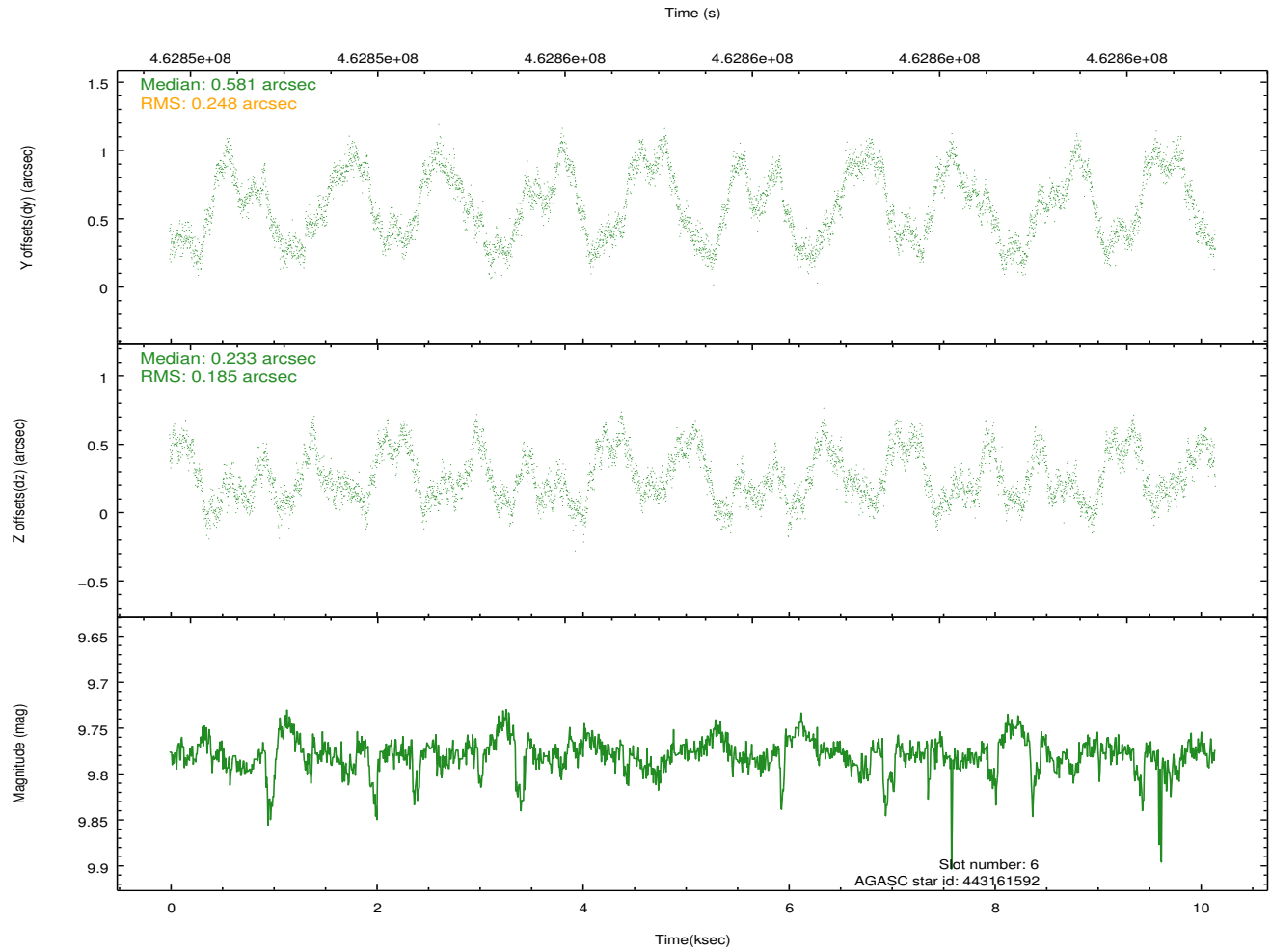
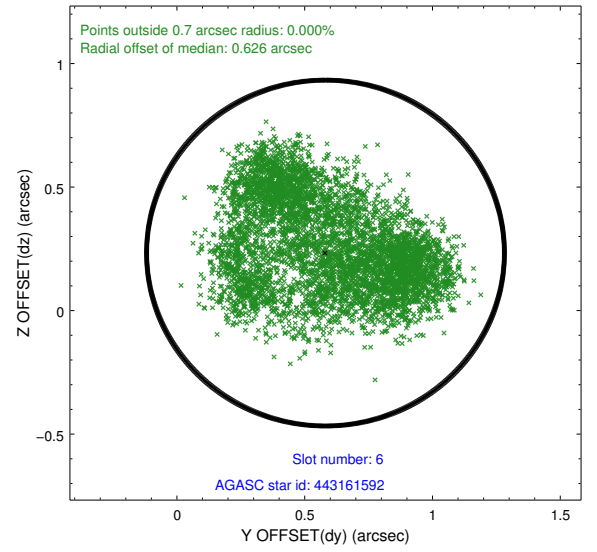
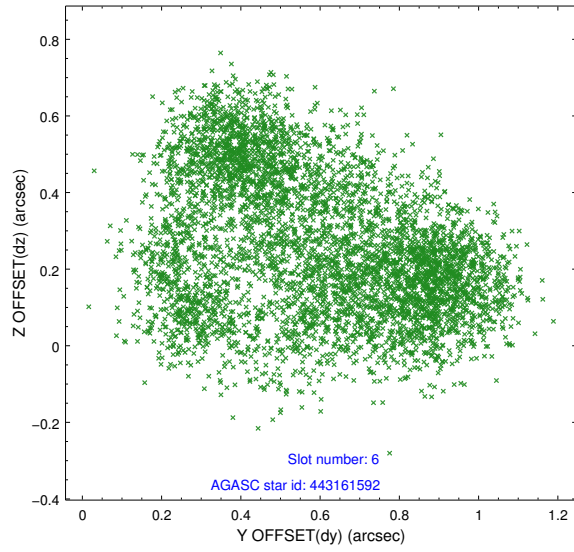
2.4.2 Slot 4



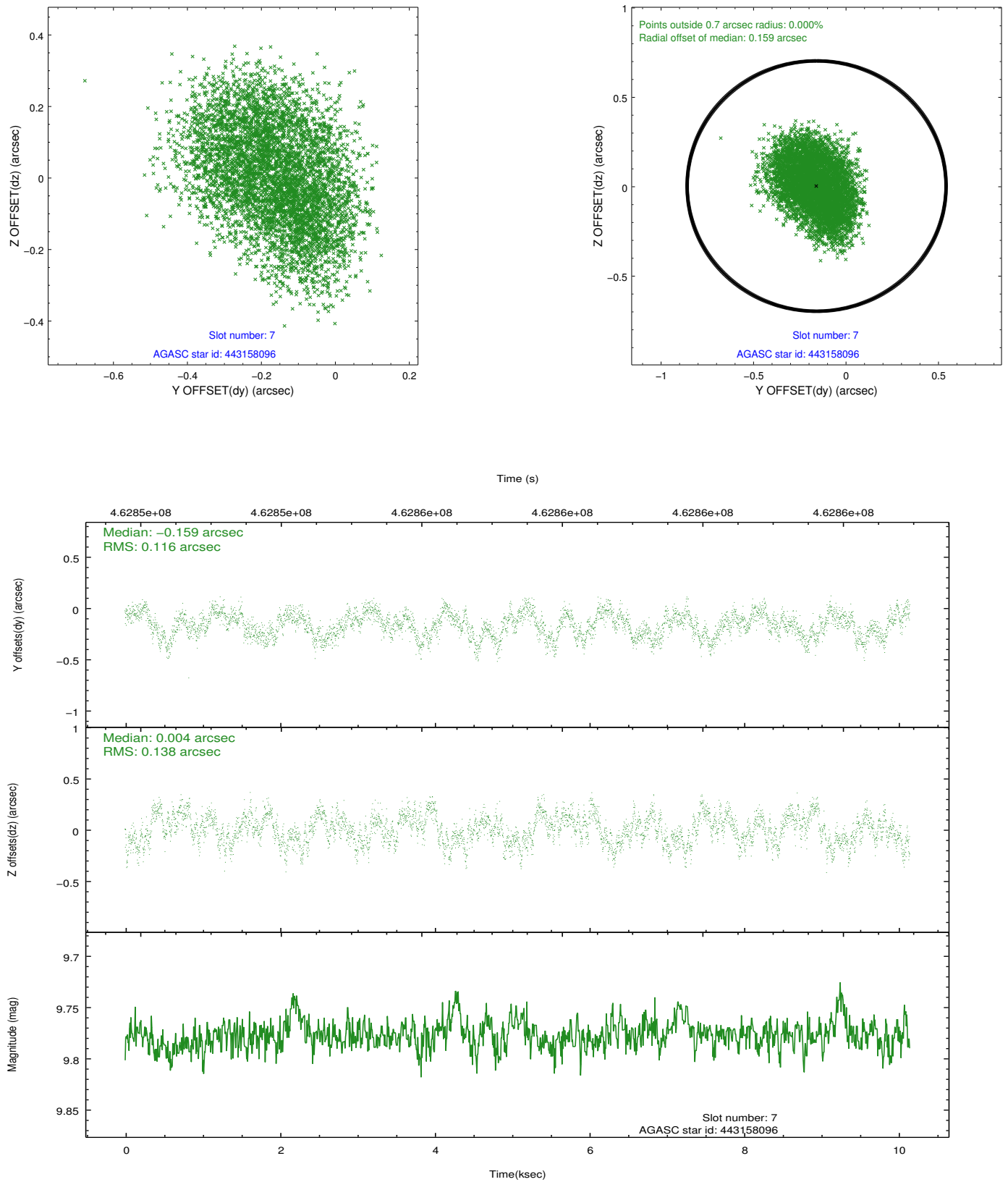
2.4.3 Slot 5



2.4.4 Slot 6

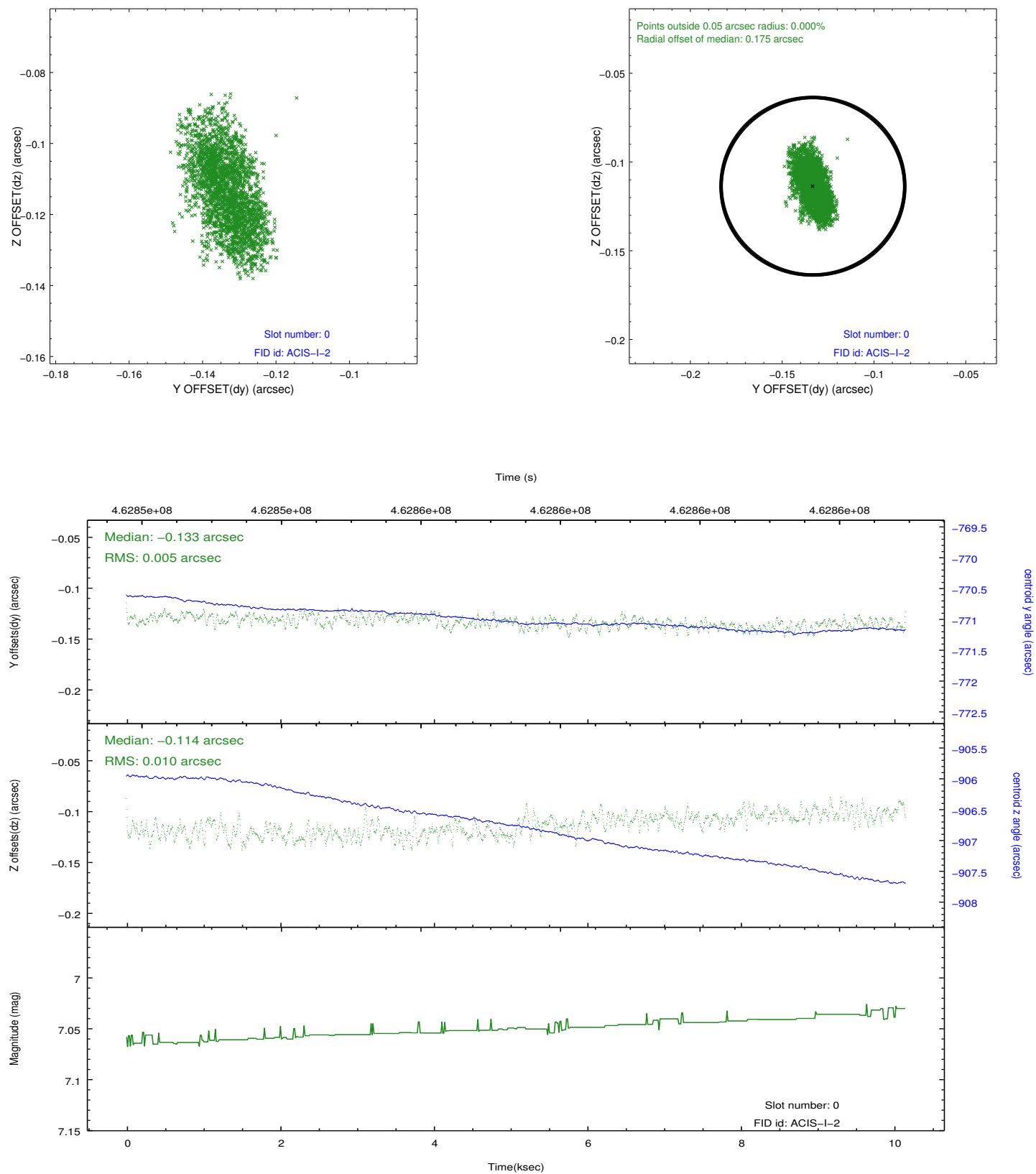


2.4.5 Slot 7

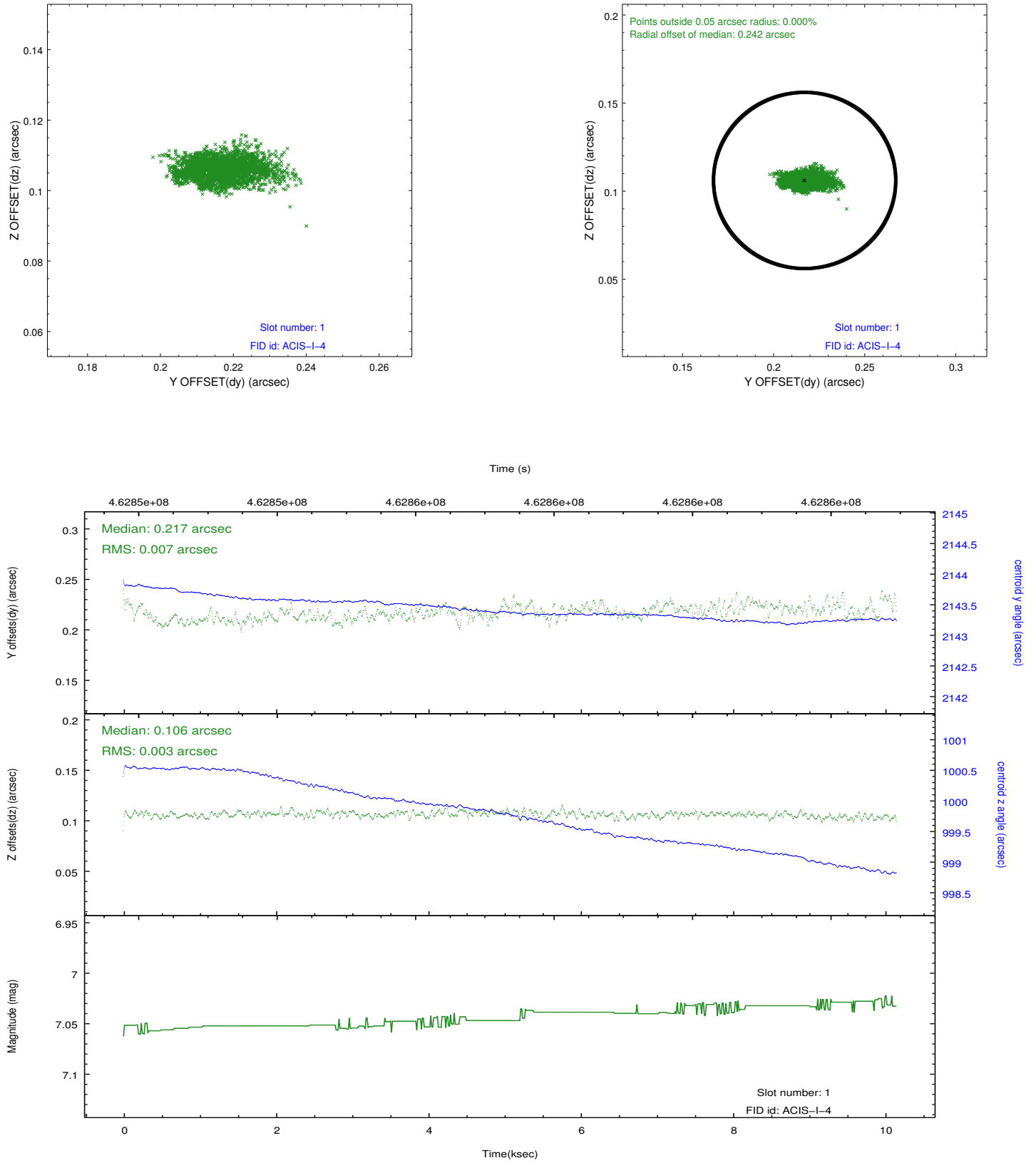


2.5 FID Slots

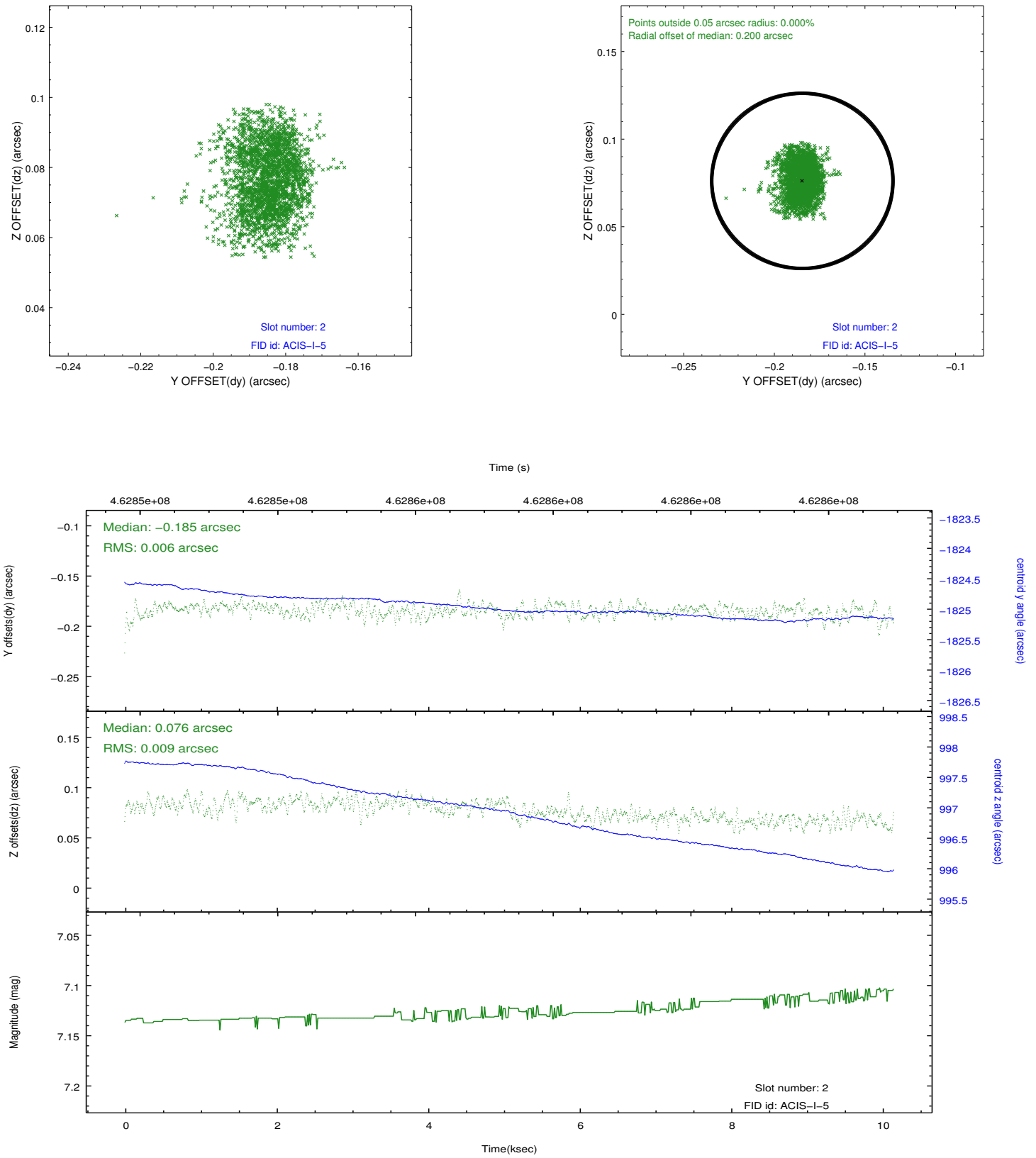
2.5.1 Slot 0



2.5.2 Slot 1



2.5.3 Slot 2



A Summary

A.1 Status

V&V Scientist	Joy Nichols
V&V Date (YYYY-MM-DD)	2012.09.04
V&V Edition	1
V&V Disposition and Status	OK
V&V Charge Time	10.078059077322

A.2 Comments