

V&V Reference Report

L2 ASCDS Version : 8.4.3

Observation 13658 - L2 Version 1
Chandra X-Ray Center

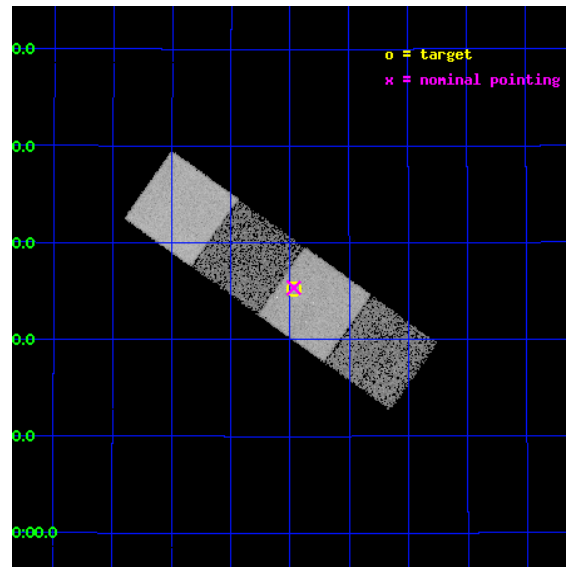
L2 Processing Date : Feb 13 2012

Contents

1	Front	2
2	OBI	3
2.1	OBI	3
2.1.1	Images	3
2.1.2	Bias	3
2.1.3	Parameters	4
2.1.4	Events	4
2.2	Compared Parameters	5
2.3	Aspect	6
2.4	Star Slots	9
2.4.1	Slot 3	9
2.4.2	Slot 4	10
2.4.3	Slot 5	11
2.4.4	Slot 6	12
2.4.5	Slot 7	13
2.5	FID Slots	14
2.5.1	Slot 0	14
2.5.2	Slot 1	15
2.5.3	Slot 2	16
A	Summary	17
A.1	Status	17
A.2	Comments	17

1 Front

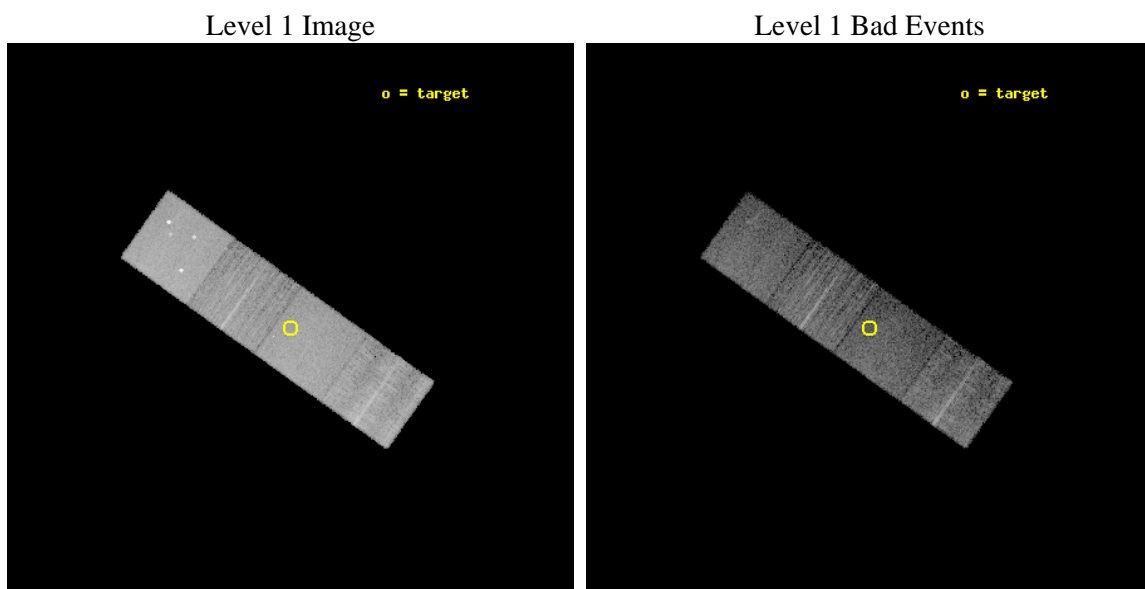
seq_num	200808	Sequence number
obs_id	13658	Observation id
title	Testing Star-Planet Interaction in Solar Analogs	Proposal title
observer	Brendan Miller	Principal investigator
object	HD 187123	Source name
dtcycle	0	
cycle	P	events from which exps? Prim/Second/Both
ra_targ	296.742083	Observer's specified target RA [deg]
dec_targ	34.419528	Observer's specified target Dec [deg]
ra_nom	296.7418727183	Nominal RA [deg]
dec_nom	34.422556988898	Nominal Dec [deg]
roll_nom	35.449897387874	Nominal Roll [deg]
revision	1	Processing version of data
ontime	10068.240343213	Sum of GTIs [s]
livetime	9936.6913709983	Livetime [s]
ontime5	10068.19930321	Sum of GTIs [s]
ontime6	10065.017273009	Sum of GTIs [s]
ontime7	10068.240343213	Sum of GTIs [s]
ontime8	10068.117223203	Sum of GTIs [s]
l2events	93996	Number of level 2 events



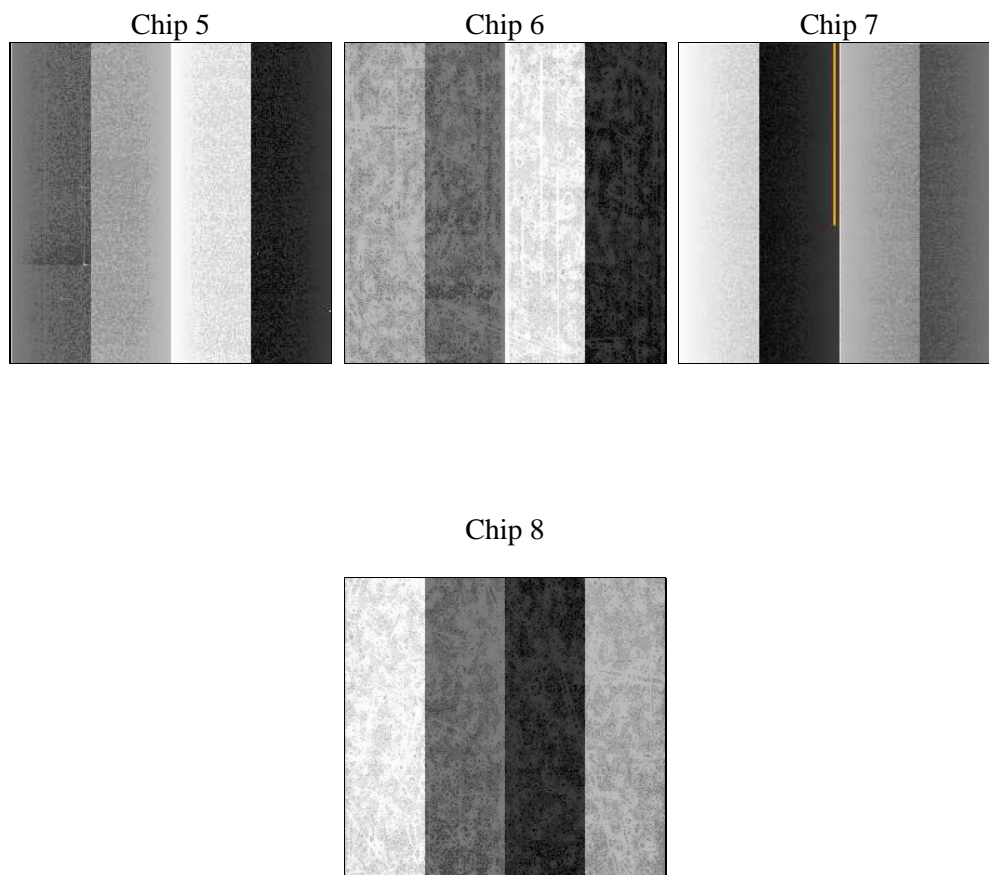
2 OBI

2.1 OBI

2.1.1 Images



2.1.2 Bias



2.1.3 Parameters

obi_num	0	Obi number	sched_exp_time	9998.902000	[s] Scheduled observation exposure time
ascdsver	8.4.3	Processing system revision	ontime	10068.240343213	Sum of GTIs [s]
caldsver	4.4.7	 	ontime5	10068.19930321	Sum of GTIs [s]
date	2012-02-13T22:05:55	Date and time of file creation	ontime6	10065.017273009	Sum of GTIs [s]
revision	1	Processing version of data	ontime7	10068.240343213	Sum of GTIs [s]
			ontime8	10068.117223203	Sum of GTIs [s]
			l1events	324344	Number of level 1 events

2.1.4 Events

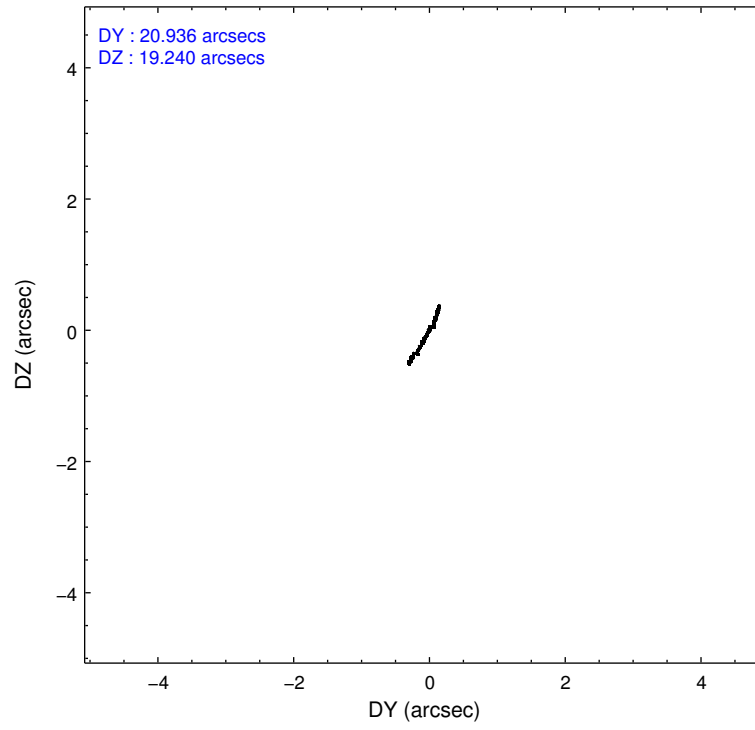
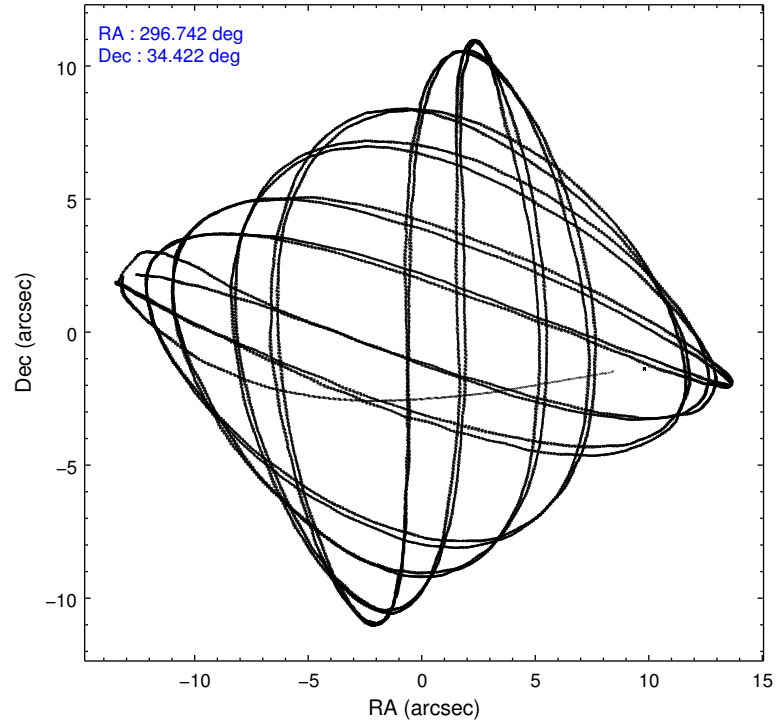
	ccd 5	ccd 6	ccd 7	ccd 8
level 1 events	101641	62173	79384	81146
rejected events	49590	54895	43738	58548
rejected %	48%	88%	55%	72%

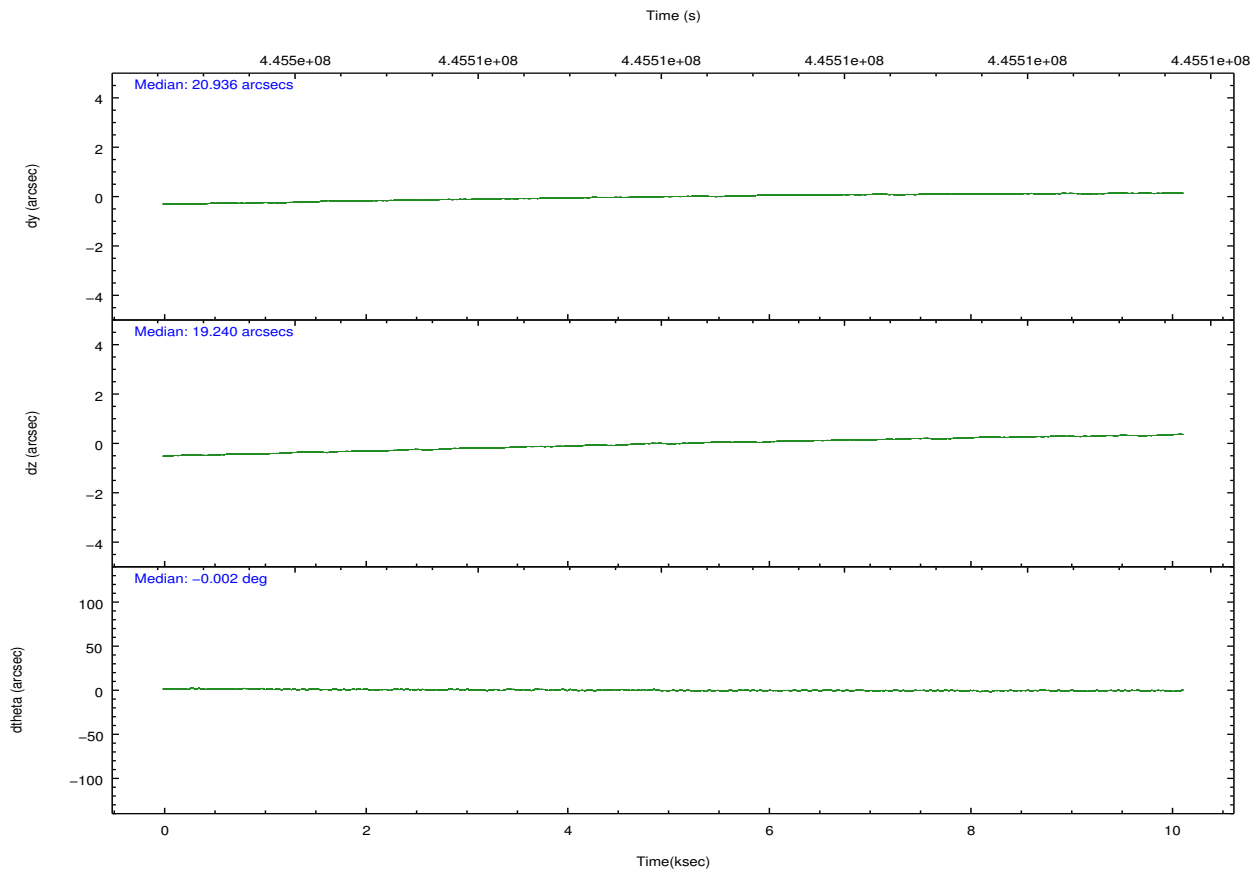
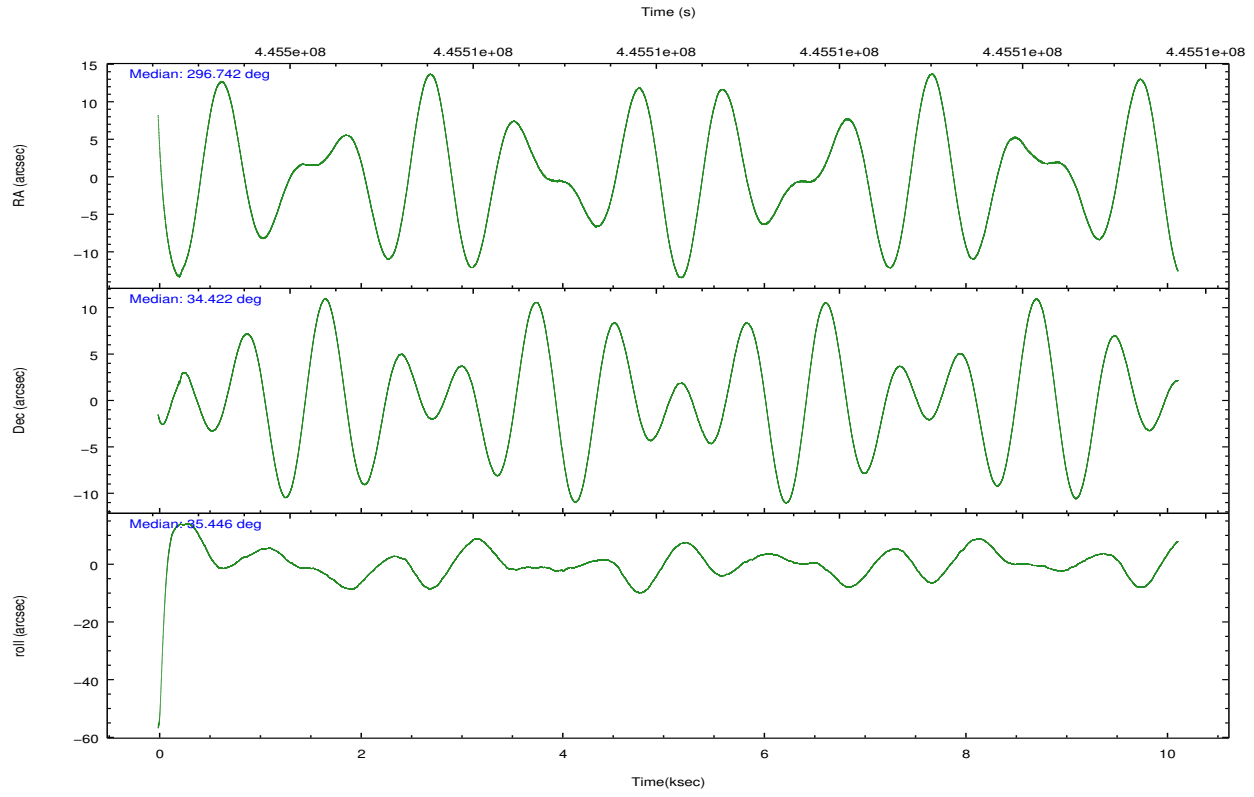
	ccd 5	ccd 6	ccd 7	ccd 8
grade 0 events	7507	2554	3299	6657
	7%	4%	4%	8%
grade 1 events	179	28	73	71
	0%	0%	0%	0%
grade 2 events	15723	1574	7332	5363
	15%	2%	9%	6%
grade 3 events	1681	764	3116	2345
	1%	1%	3%	2%
grade 4 events	1745	785	3171	2228
	1%	1%	3%	2%
grade 5 events	7262	2929	8120	4427
	7%	4%	10%	5%
grade 6 events	25436	1606	18755	6014
	25%	2%	23%	7%
grade 7 events	42108	51933	35518	54041
	41%	83%	44%	66%

2.2 Compared Parameters

Parameter	Planned	Actual	Parameter	Planned	Actual
Instrument	ACIS	ACIS	Obspar format version number	7	7
Detector	ACIS-5678	ACIS-5678	Obspar file type	PREDICTED	ACTUAL
Grating	NONE	NONE	Obspar update status	NONE	UPDATED
Data mode	VFAINT	VFAINT	CCD I0 on	N	N
Observation mode	POINTING	POINTING	CCD I1 on	N	N
[deg] Pointing RA	296.728538	296.7418727183001	CCD I2 on	N	N
[deg] Pointing Dec	34.397522	34.42255698889809	CCD I3 on	N	N
[deg] Pointing Roll	35.300892	35.44989738787408	CCD S0 on	N	N
[mm] SIM focus pos	-0.684267	-0.6828225247311905	CCD S1 on	O1	Y
[mm] SIM defocus	0	0.001444936568705701	CCD S2 on	O2	Y
[mm] SIM translation stage pos	-190.132523	-190.1400660498719	CCD S3 on	Y	Y
[mm] SIM translation stage offset	0	0.00754346686406393	CCD S4 on	O3	Y
[s] Observation start time (MET)	445503176.184000	445501486.19347	CCD S5 on	N	N
Observation start date	2012-02-13T06:51:50	2012-02-13T06:24:46	Number of optional ACIS chips dropped	0	0
[s] Observation end time (MET)	445513175.184000	445513402.8441	On-chip summing requested	N	N
Observation end date	2012-02-13T09:38:29	2012-02-13T09:43:22	Subarray requested	NONE	NONE
Read mode	TIMED	TIMED	Alternating exposures requested	N	N
			[s] Primary exposure time	0.000000	3.1

2.3 Aspect



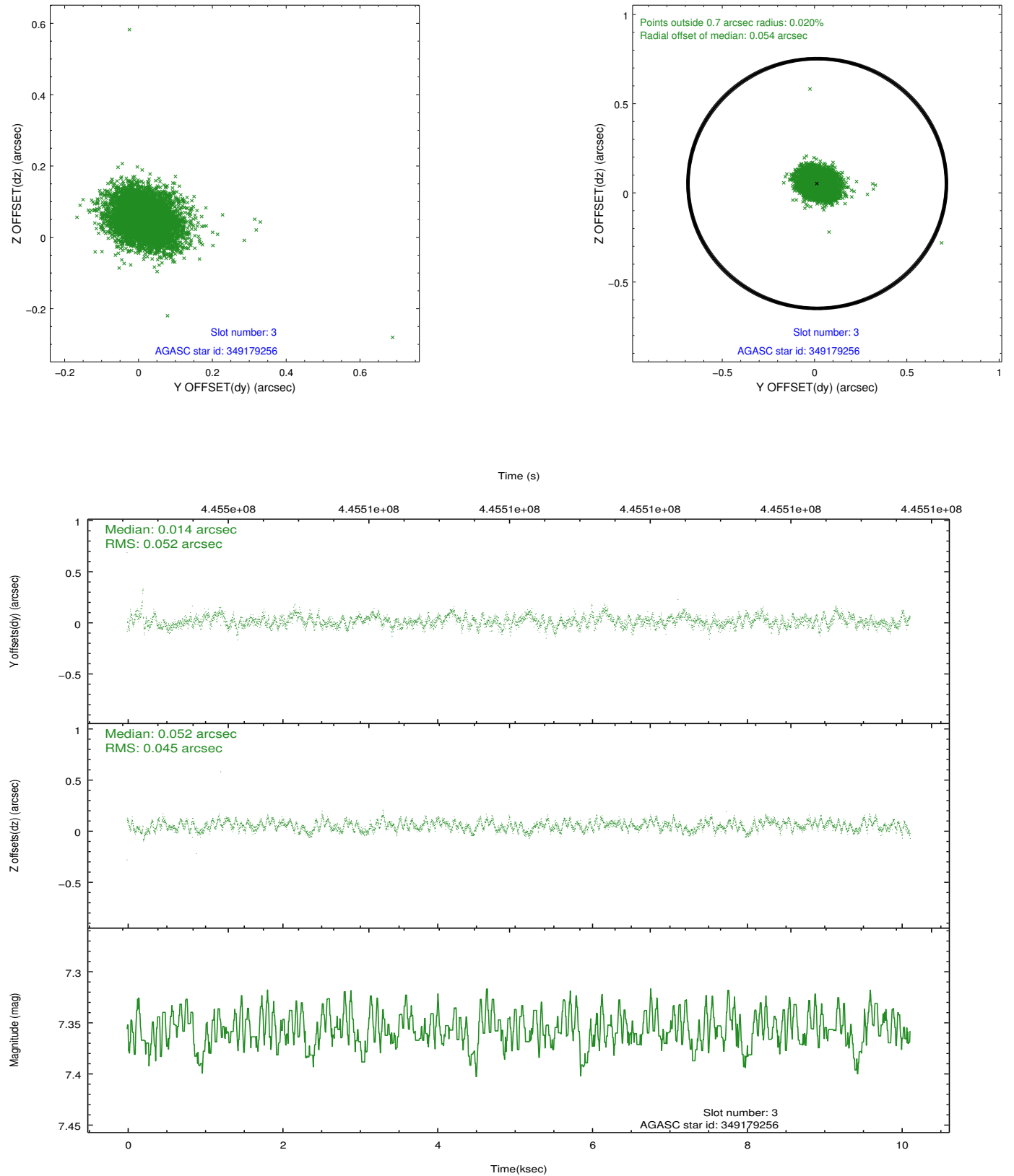


Slot Statistics

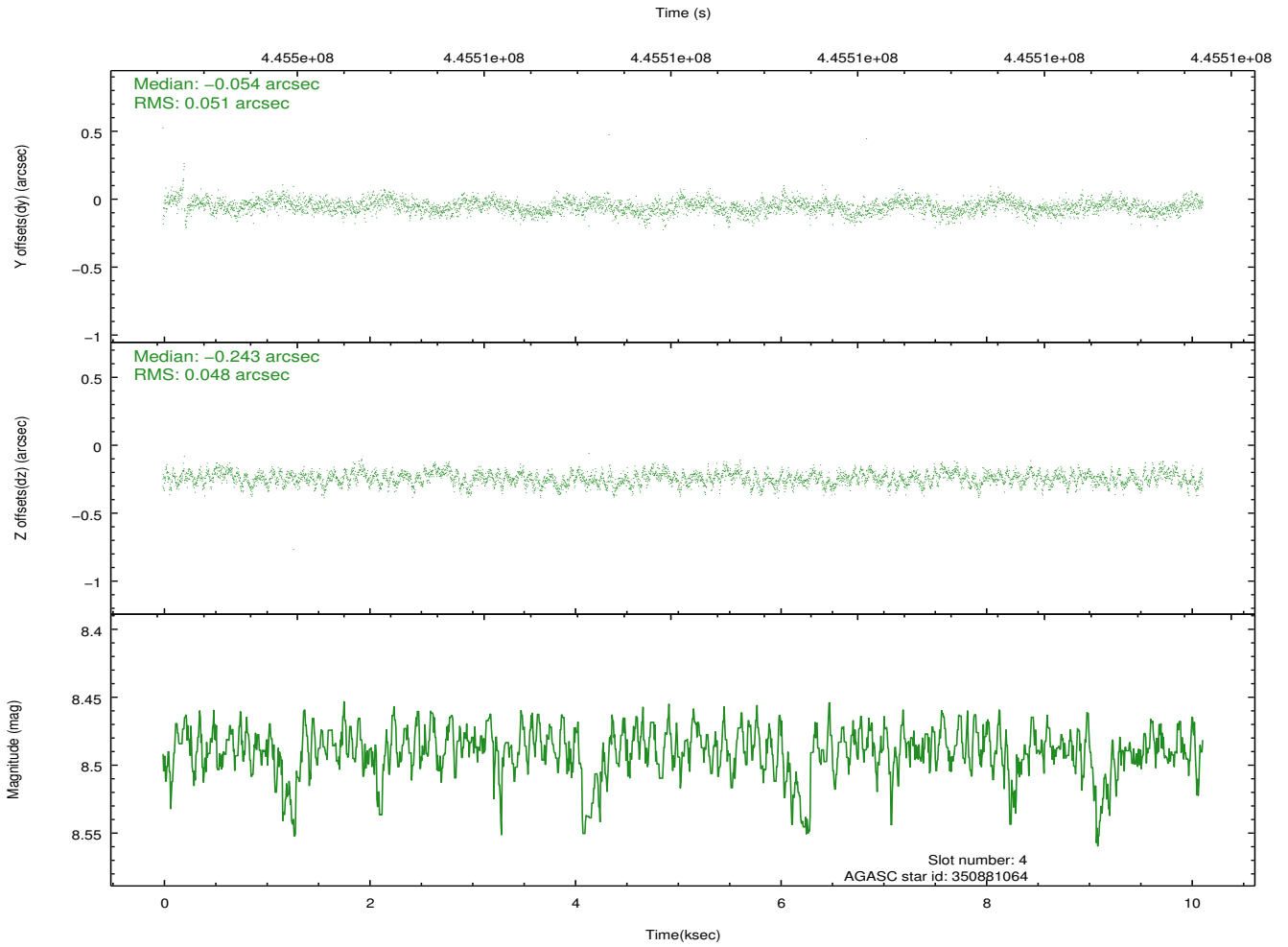
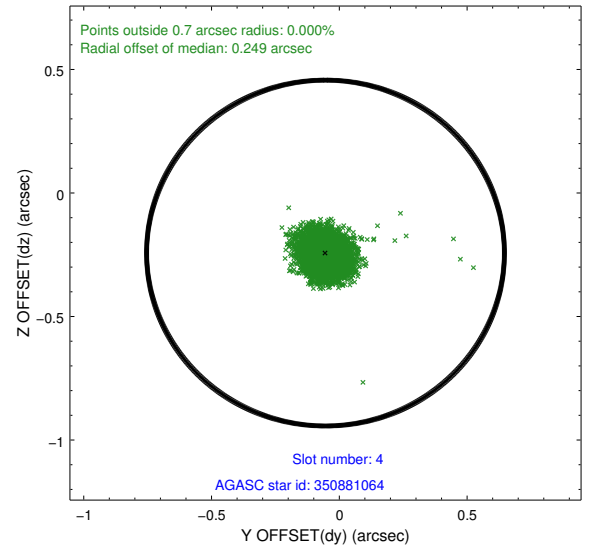
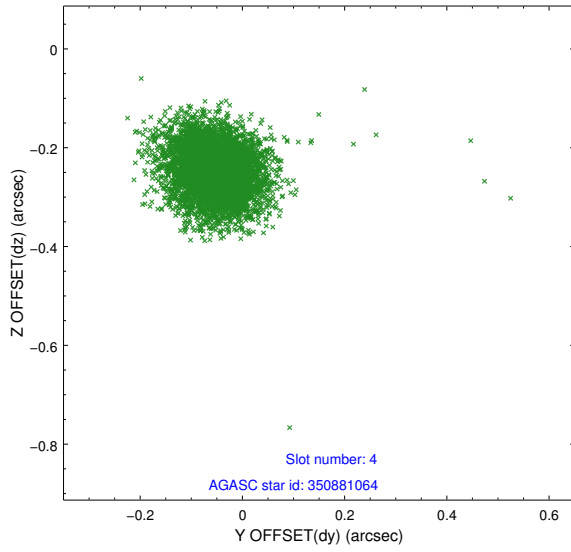
slot	status	id	mag	n_pts	med_dy	med_dz	dr1	dr2	ra	dec	mean_y	mean_z
0	FID	ACIS-S-2	6.85	2468	-0.136	-0.071	0.008	0.013	0.000000	0.000000	-774.23	-1740.74
1	FID	ACIS-S-4	6.92	2468	0.166	0.078	0.007	0.011	0.000000	0.000000	2139.17	167.24
2	FID	ACIS-S-6	7.06	2468	-0.058	-0.000	0.008	0.012	0.000000	0.000000	388.58	805.22
3	GUIDE	349179256	7.36	4937	0.014	0.052	0.072	0.114	296.868234	34.304571	146.13	-512.77
4	GUIDE	350881064	8.49	4935	-0.054	-0.243	0.072	0.118	297.128750	34.634299	1461.45	12.26
5	GUIDE	350889392	8.93	4936	0.120	0.093	0.124	0.201	297.618746	34.385361	2140.64	-1554.29
6	GUIDE	349181672	8.32	4936	-0.104	-0.082	0.094	0.158	295.752060	34.421947	-2307.26	1758.45
7	GUIDE	349179904	8.06	4936	0.015	0.179	0.069	0.111	296.126779	33.977438	-2337.18	-191.31

2.4 Star Slots

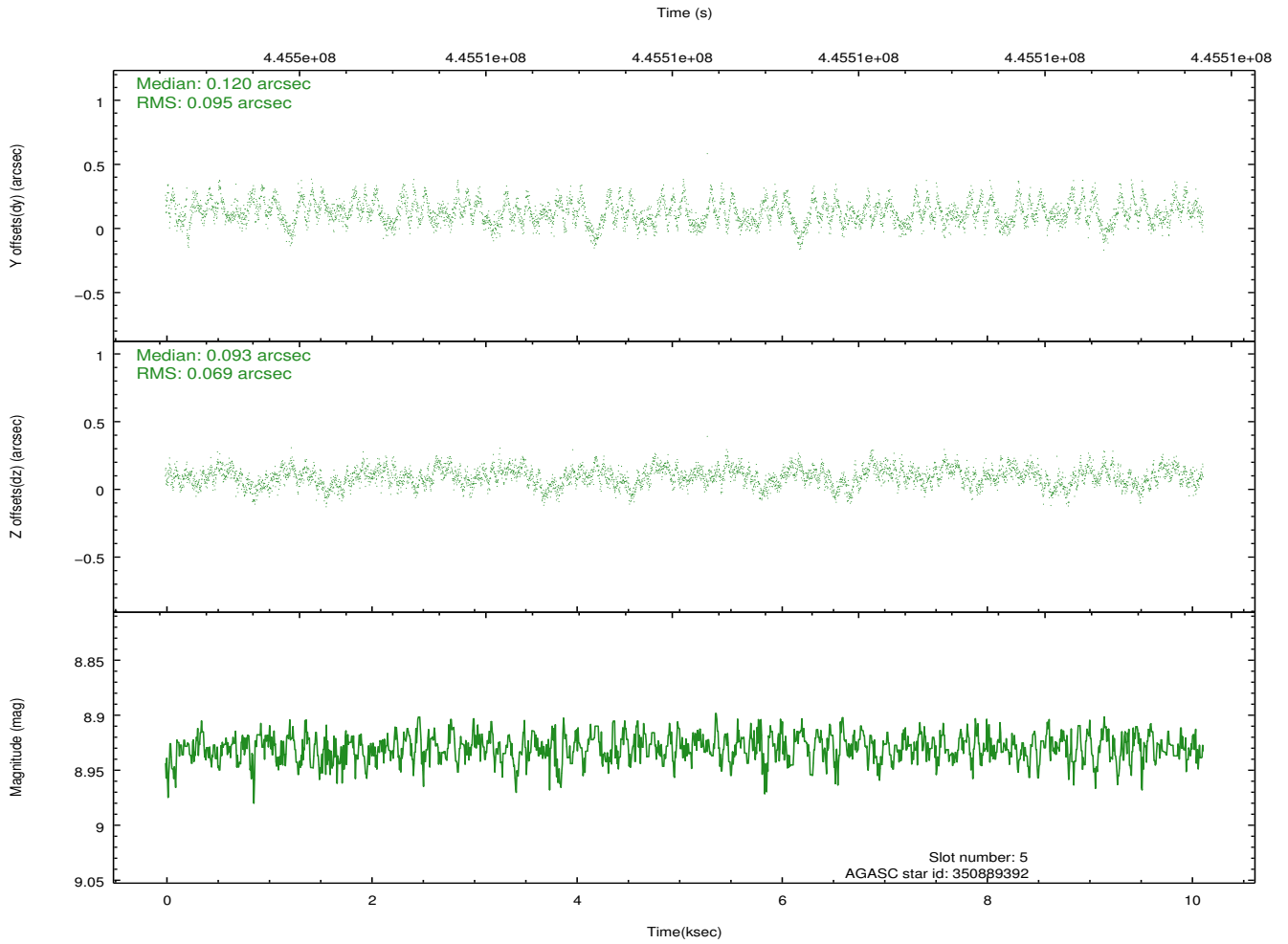
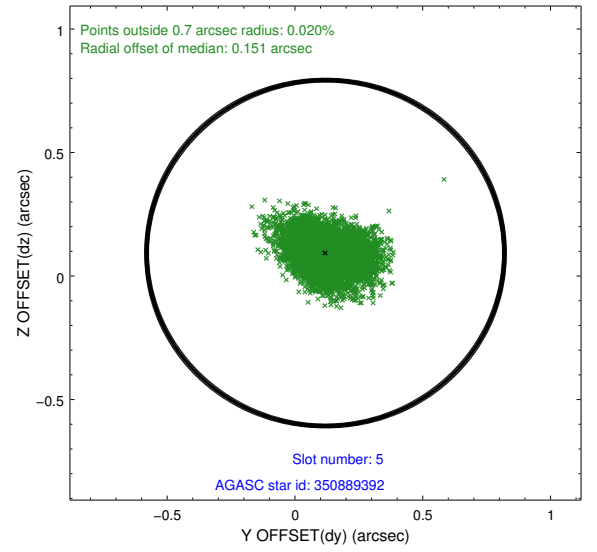
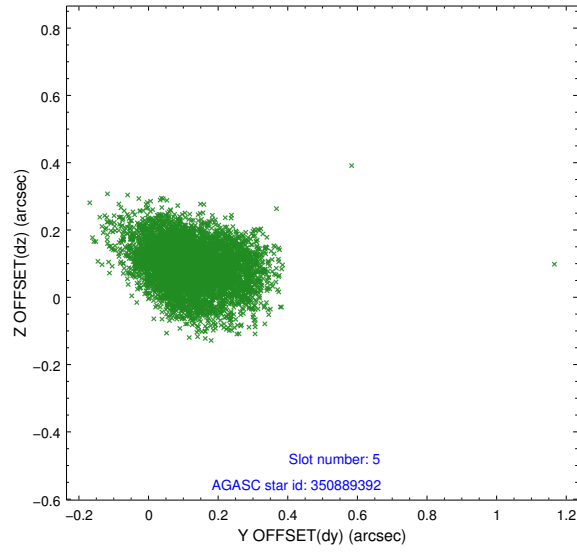
2.4.1 Slot 3



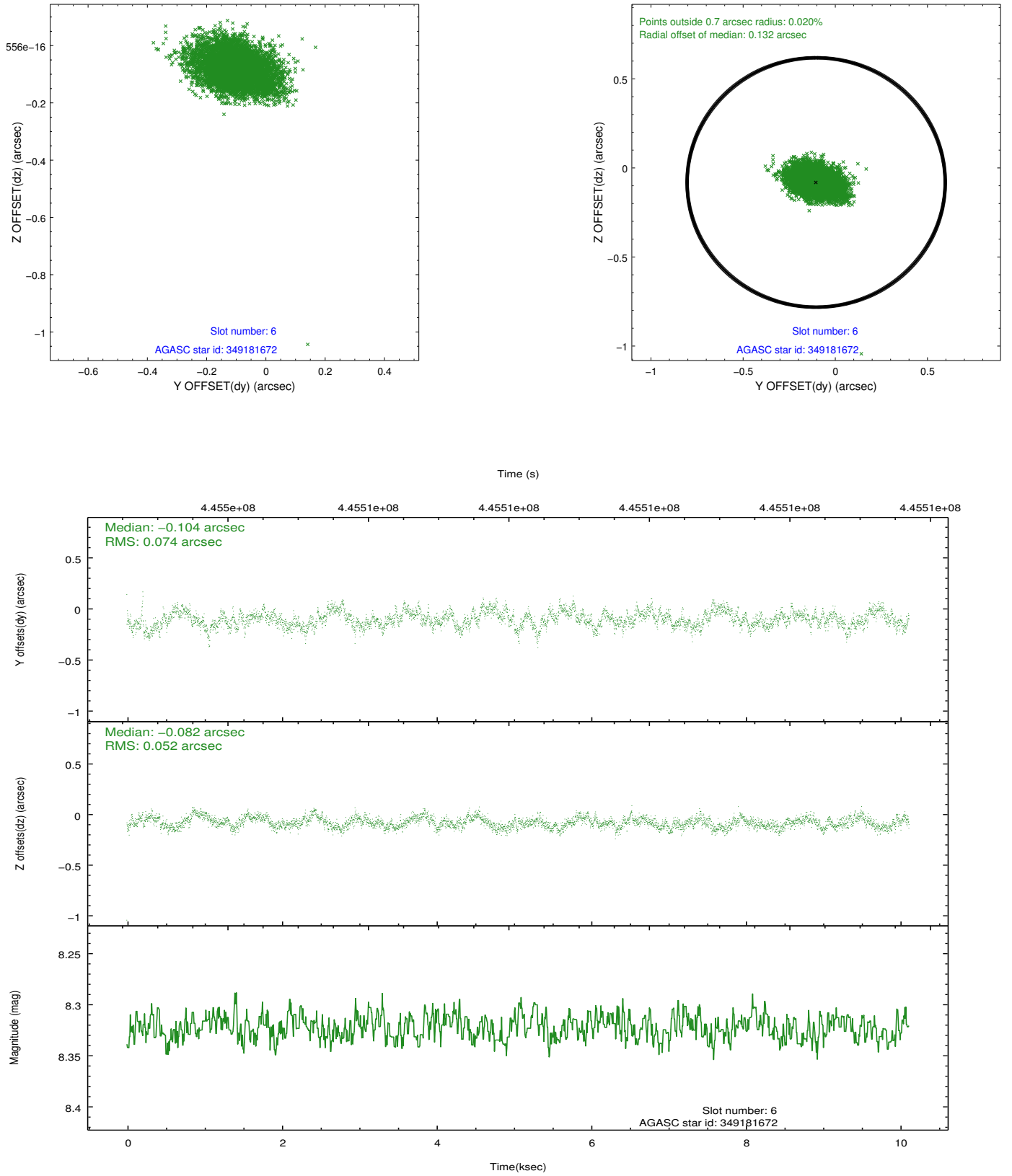
2.4.2 Slot 4



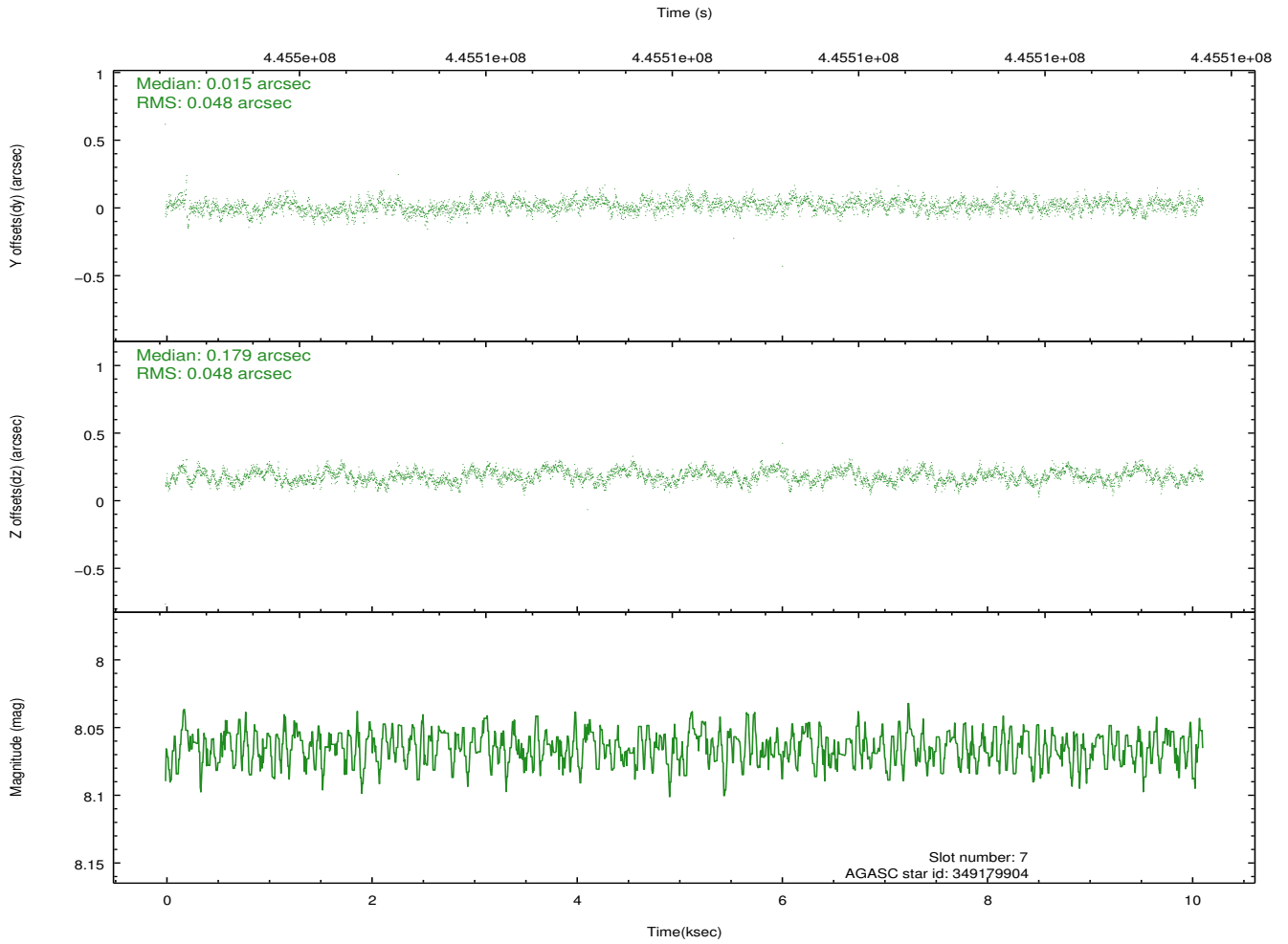
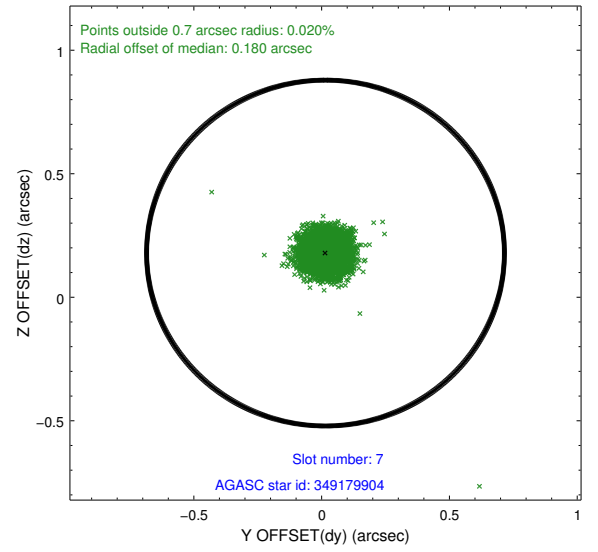
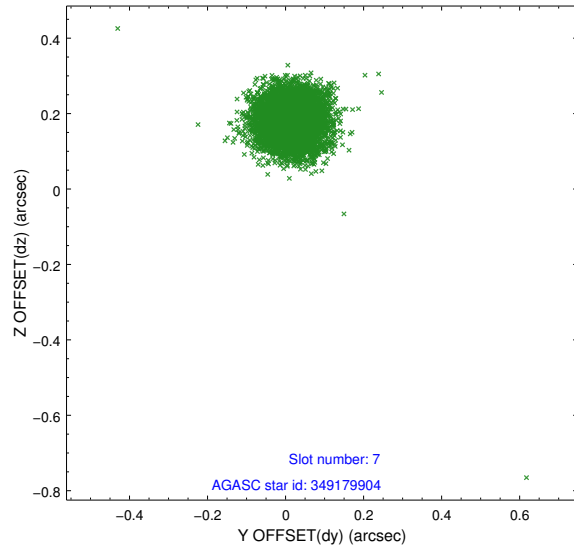
2.4.3 Slot 5



2.4.4 Slot 6

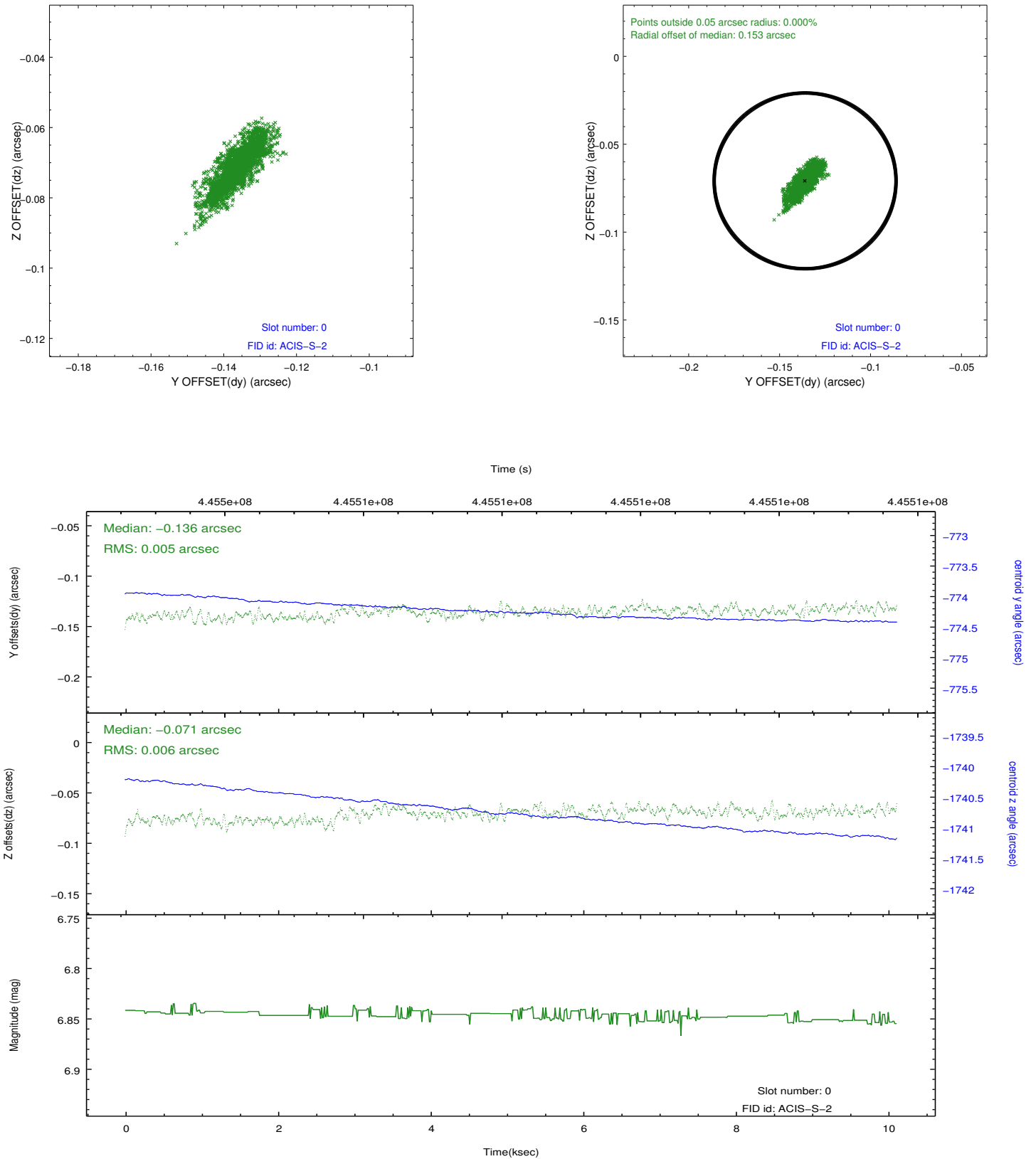


2.4.5 Slot 7

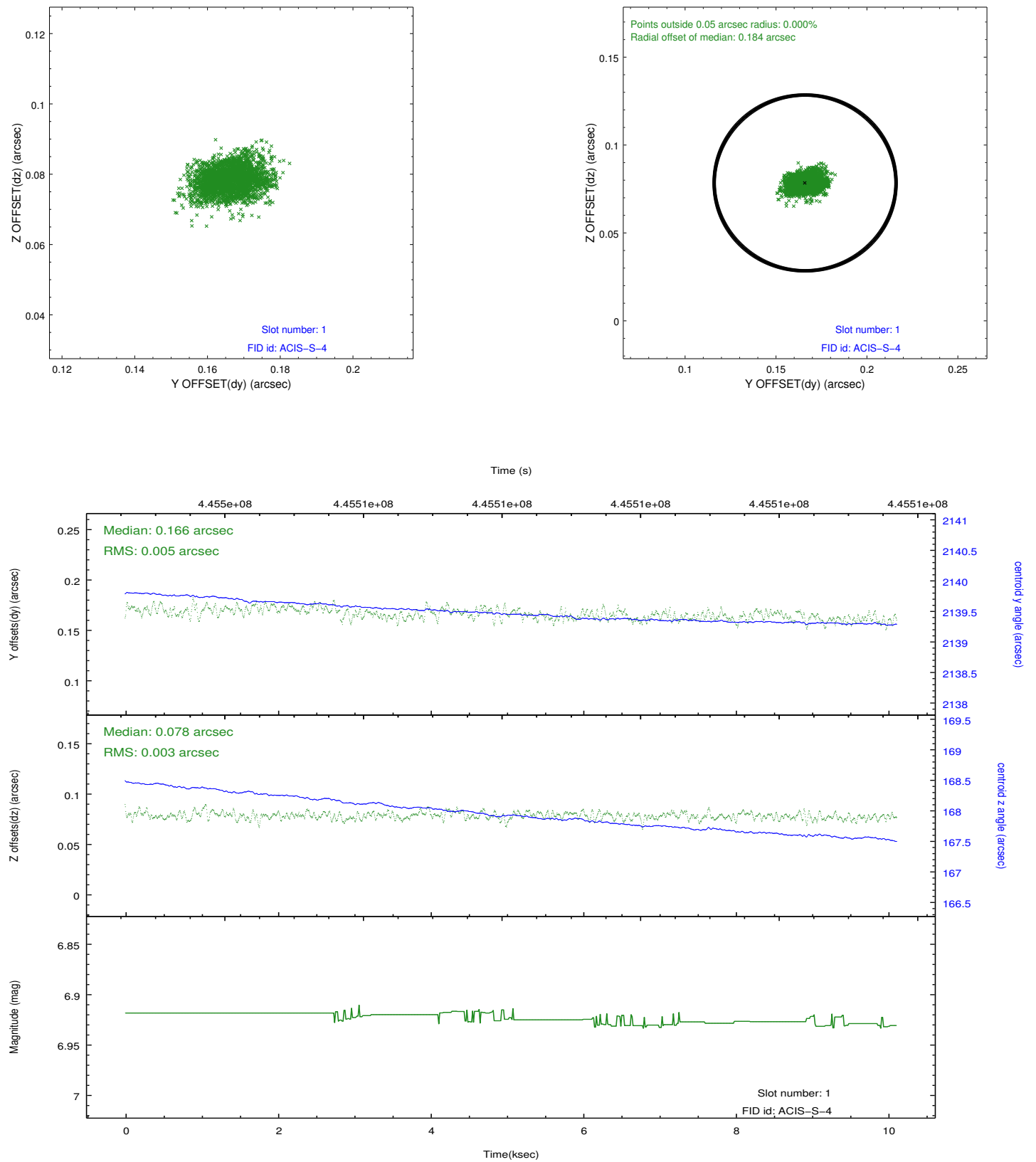


2.5 FID Slots

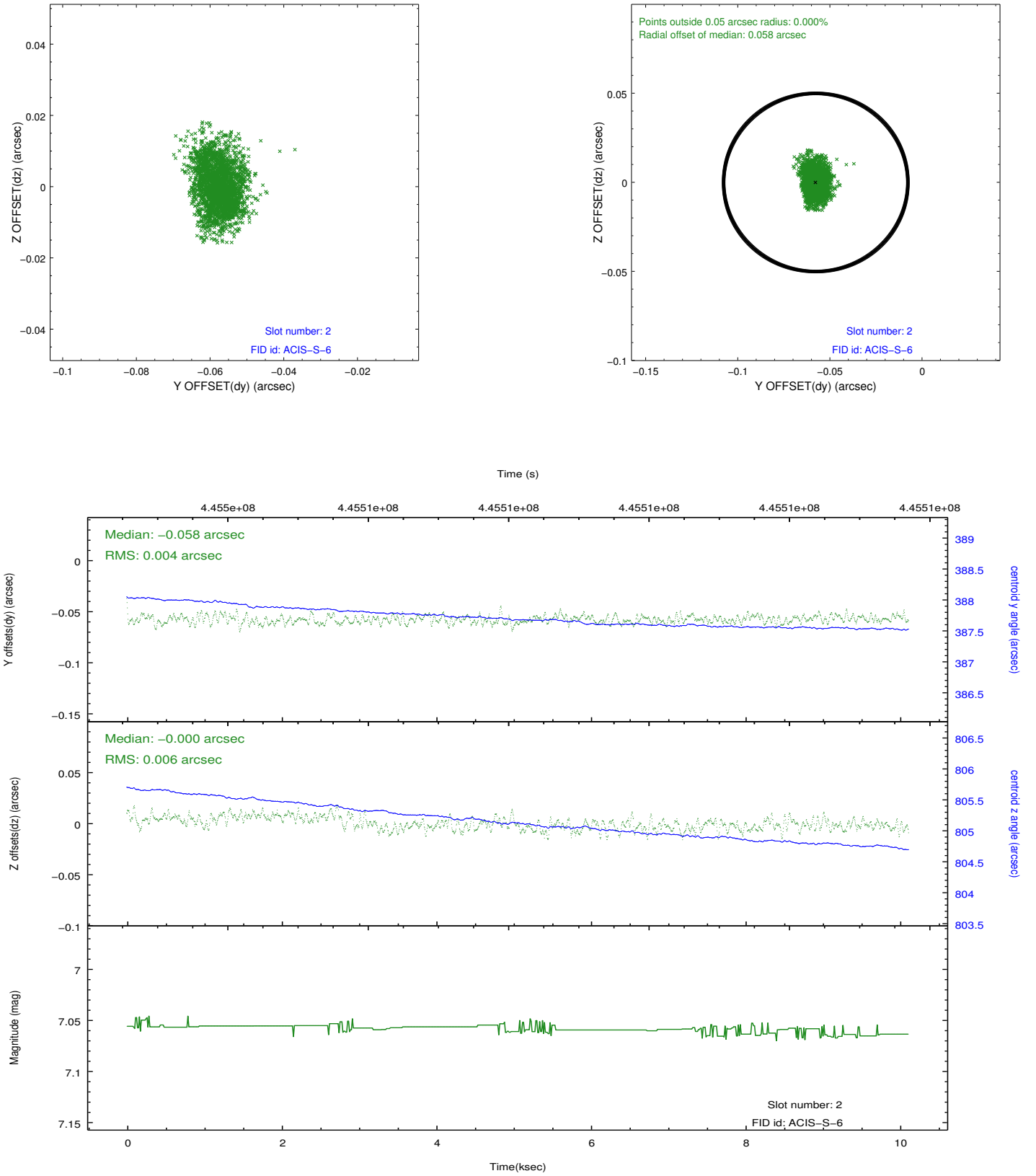
2.5.1 Slot 0



2.5.2 Slot 1



2.5.3 Slot 2



A Summary

A.1 Status

V&V Scientist	Joy Nichols
V&V Date (YYYY-MM-DD)	2012.02.14
V&V Edition	1
V&V Disposition and Status	OK
V&V Charge Time	10.068240343213

A.2 Comments