

V&V Reference Report

L2 ASCDS Version : 8.4.3

Observation 13628 - L2 Version 1
Chandra X-Ray Center

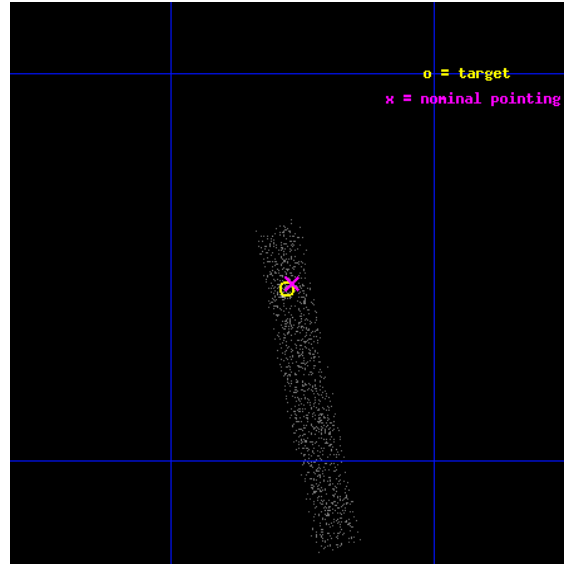
L2 Processing Date : Apr 8 2012

Contents

1	Front	2
2	OBI	3
2.1	OBI	3
2.1.1	Images	3
2.1.2	Bias	3
2.1.3	Parameters	4
2.1.4	Events	4
2.2	Compared Parameters	5
2.3	Aspect	6
2.4	Star Slots	9
2.4.1	Slot 3	9
2.4.2	Slot 4	10
2.4.3	Slot 5	11
2.4.4	Slot 6	12
2.4.5	Slot 7	13
2.5	FID Slots	14
2.5.1	Slot 0	14
2.5.2	Slot 1	15
2.5.3	Slot 2	16
A	Summary	17
A.1	Status	17
A.2	Comments	17

1 Front

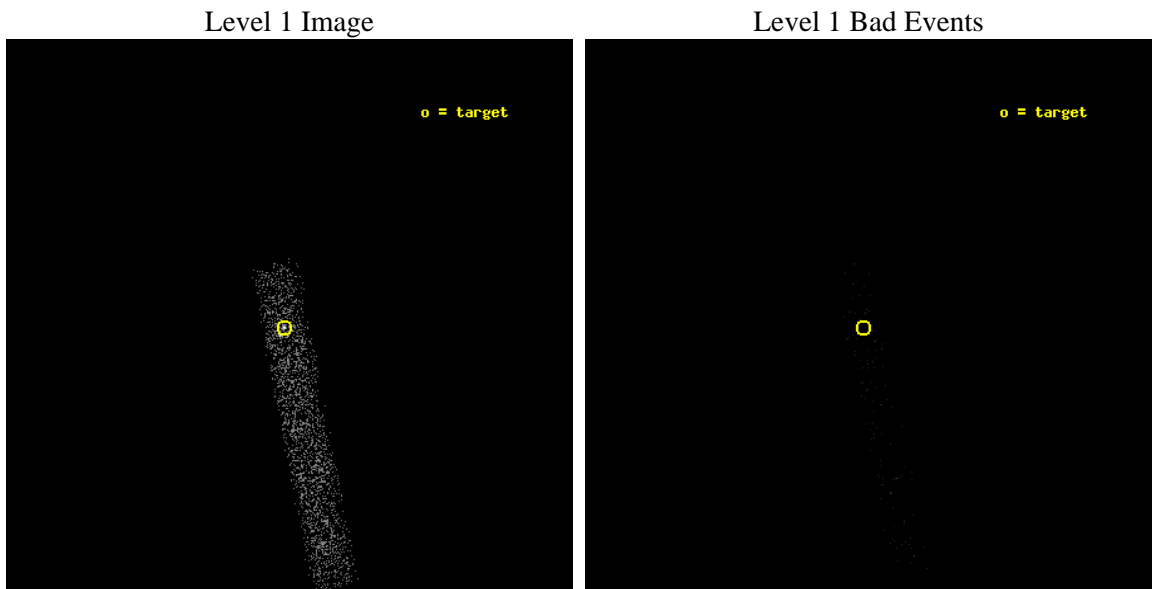
seq_num	200782	Sequence number
obs_id	13628	Observation id
title	A Search for X-ray Emission from Colliding Magnetospheres in Young Eccentric Stellar Binaries	Proposal title
observer	Dr. Konstantin Getman	Principal investigator
object	RXJ1622.7-2325_P2	Source name
dtcycle	0	
cycle	P	events from which exps? Prim/Second/Both
ra_targ	245.695	Observer's specified target RA [deg]
dec_targ	-23.425861	Observer's specified target Dec [deg]
ra_nom	245.69249928064	Nominal RA [deg]
dec_nom	-23.423916527317	Nominal Dec [deg]
roll_nom	79.10188547722	Nominal Roll [deg]
revision	1	Processing version of data
ontime	3070.3806146979	Sum of GTIs [s]
livetime	2784.6731495537	Livetime [s]
ontime7	3070.3806146979	Sum of GTIs [s]
l2events	1696	Number of level 2 events



2 OBI

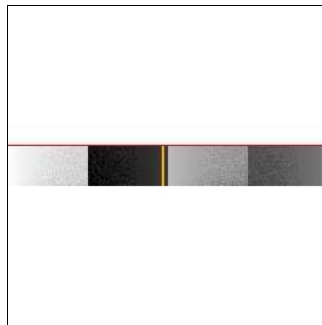
2.1 OBI

2.1.1 Images



2.1.2 Bias

Chip 7



2.1.3 Parameters

obi_num	0	Obi number	sched_exp_time	3000.000000	[s] Scheduled observation exposure time
ascdsver	8.4.3	Processing system revision	ontime	3070.3806146979	Sum of GTIs [s]
caldsver	4.4.9	 	ontime7	3070.3806146979	Sum of GTIs [s]
date	2012-04-08T14:04:44	Date and time of file creation	l1events	2968	Number of level 1 events
revision	1	Processing version of data			

2.1.4 Events

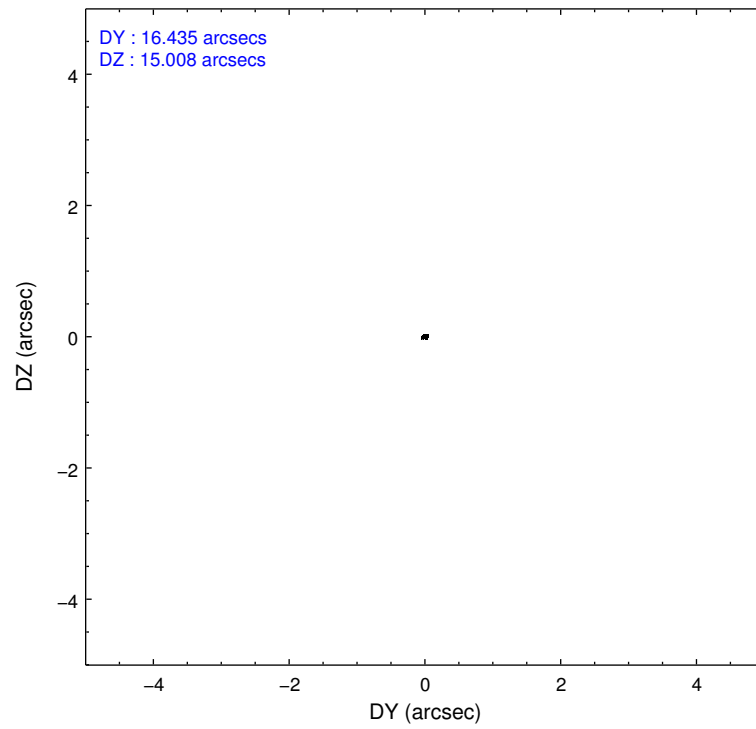
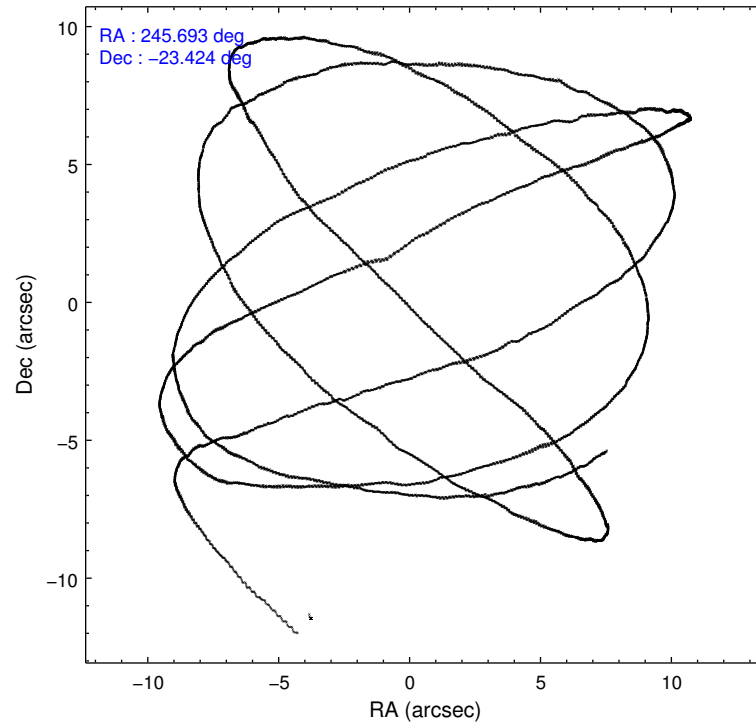
	ccd 7
level 1 events	2968
rejected events	1211
rejected %	40%

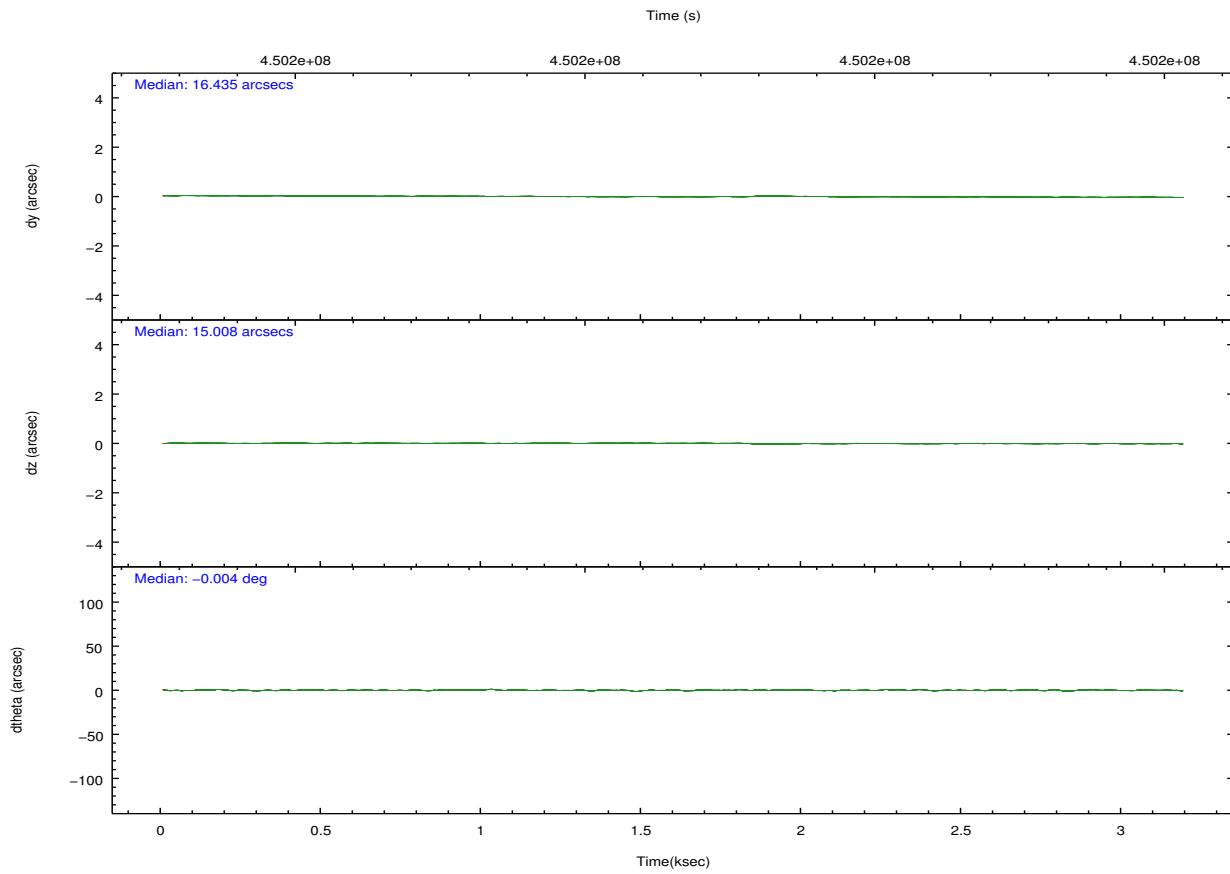
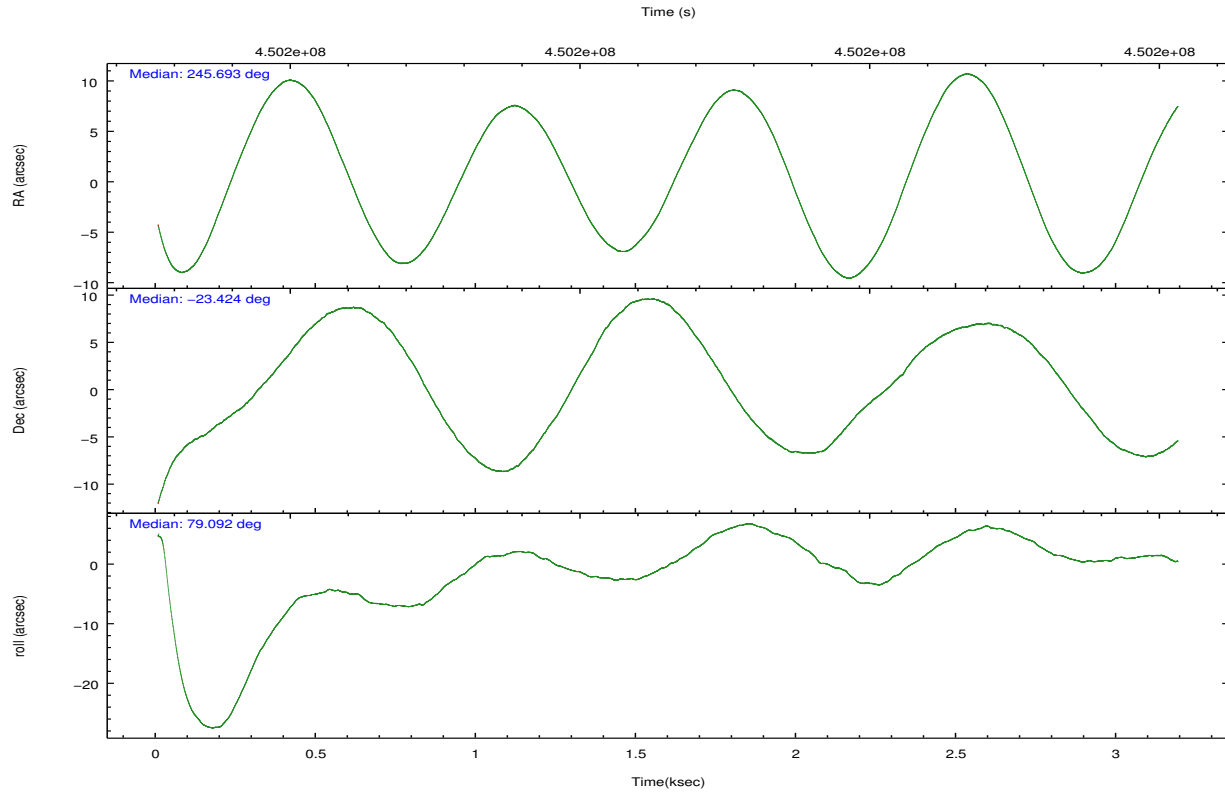
	ccd 7
grade 0 events	258
	8%
grade 1 events	2
	0%
grade 2 events	362
	12%
grade 3 events	247
	8%
grade 4 events	220
	7%
grade 5 events	257
	8%
grade 6 events	670
	22%
grade 7 events	952
	32%

2.2 Compared Parameters

Parameter	Planned	Actual	Parameter	Planned	Actual
Instrument	ACIS	ACIS	Obspar format version number	7	7
Detector	ACIS-7	ACIS-7	Obspar file type	PREDICTED	ACTUAL
Grating	NONE	NONE	Obspar update status	NONE	UPDATED
Data mode	VFAINT	VFAINT	Number of optional ACIS chips dropped	0	0
Observation mode	POINTING	POINTING	On-chip summing requested	N	N
[deg] Pointing RA	245.702738	245.6924992806428	Subarray requested	CUSTOM	1/8
[deg] Pointing Dec	-23.449493	-23.423916527317	Subarray start row	449	449
[deg] Pointing Roll	78.949180	79.10188547721955	Subarray row count	128	128
[mm] SIM focus pos	-0.684267	-0.6828225247311905	Alternating exposures requested	N	N
[mm] SIM defocus	0	0.001444936568705701	[s] Primary exposure time	0.000000	0.4
[mm] SIM translation stage pos	-190.132523	-190.1400660498719			
[mm] SIM translation stage offset	0	0.00754346686406393			
Phase constraints	Y	Y			
[d] Phase period	3.230000	3.230000			
[d] Phase epoch (MJD)	55627.380000	55627.380000			
Phase start	0.990000	0.990000			
Phase end	1.000000	1.000000			
Phase start error	0.010000	0.010000			
Phase end error	0.010000	0.010000			
[s] Observation start time (MET)	450196899.184000	450195310.45476			
Observation start date	2012-04-07T14:40:33	2012-04-07T14:15:10			
[s] Observation end time (MET)	450199899.184000	450200902.34256			
Observation end date	2012-04-07T15:30:33	2012-04-07T15:48:22			
Read mode	TIMED	TIMED			

2.3 Aspect



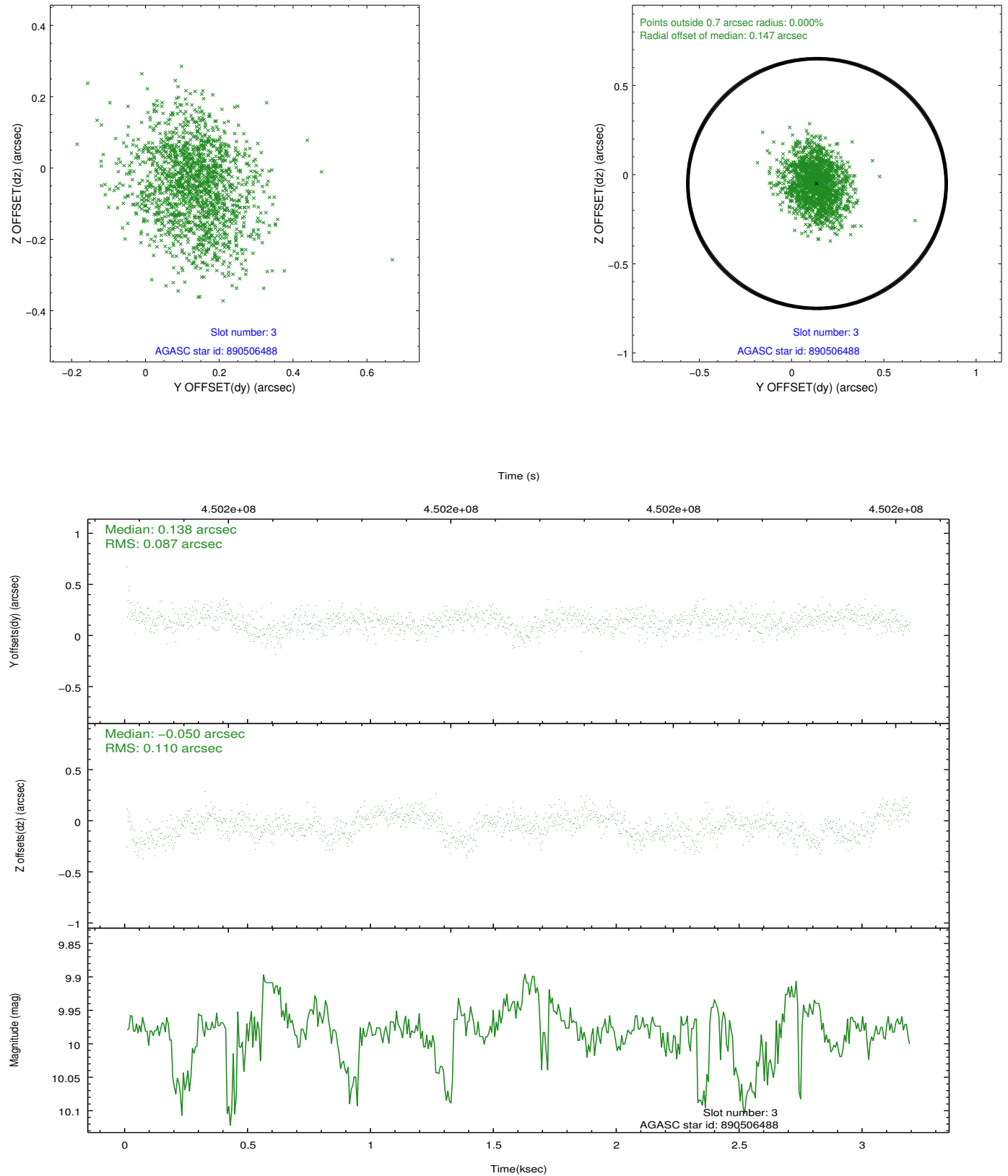


Slot Statistics

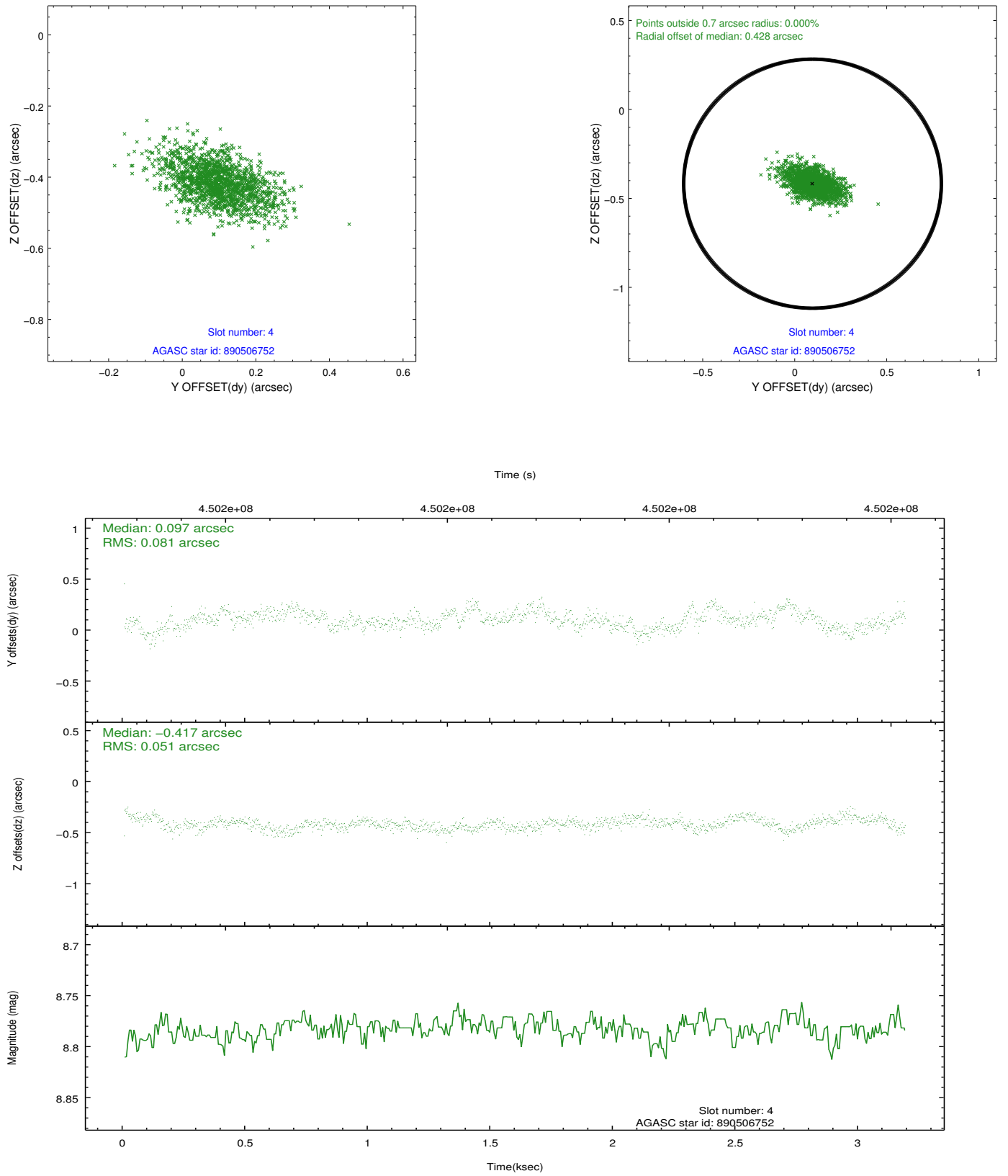
slot	status	id	mag	n_pts	med_dy	med_dz	dr1	dr2	ra	dec	mean_y	mean_z
0	FID	ACIS-S-2	7.00	778	-0.124	0.001	0.007	0.013	0.000000	0.000000	-769.56	-1736.39
1	FID	ACIS-S-4	7.09	778	0.215	0.059	0.005	0.010	0.000000	0.000000	2143.13	170.10
2	FID	ACIS-S-5	7.12	777	-0.122	-0.052	0.007	0.012	0.000000	0.000000	-1819.85	165.91
3	GUIDE	890506488	9.98	1548	0.138	-0.050	0.149	0.240	245.044034	-23.803431	-1671.28	1884.30
4	GUIDE	890506752	8.78	1552	0.097	-0.417	0.098	0.175	245.184812	-23.845052	-1728.01	1400.91
5	GUIDE	890507200	10.33	1545	0.067	0.052	0.199	0.301	245.241102	-23.876227	-1802.48	1197.59
6	GUIDE	890507552	7.40	1554	-0.221	0.360	0.096	0.161	246.396169	-23.405213	589.65	-2217.48
7	GUIDE	890507576	7.38	1554	-0.080	0.063	0.101	0.180	245.329963	-23.707983	-1149.85	1025.95

2.4 Star Slots

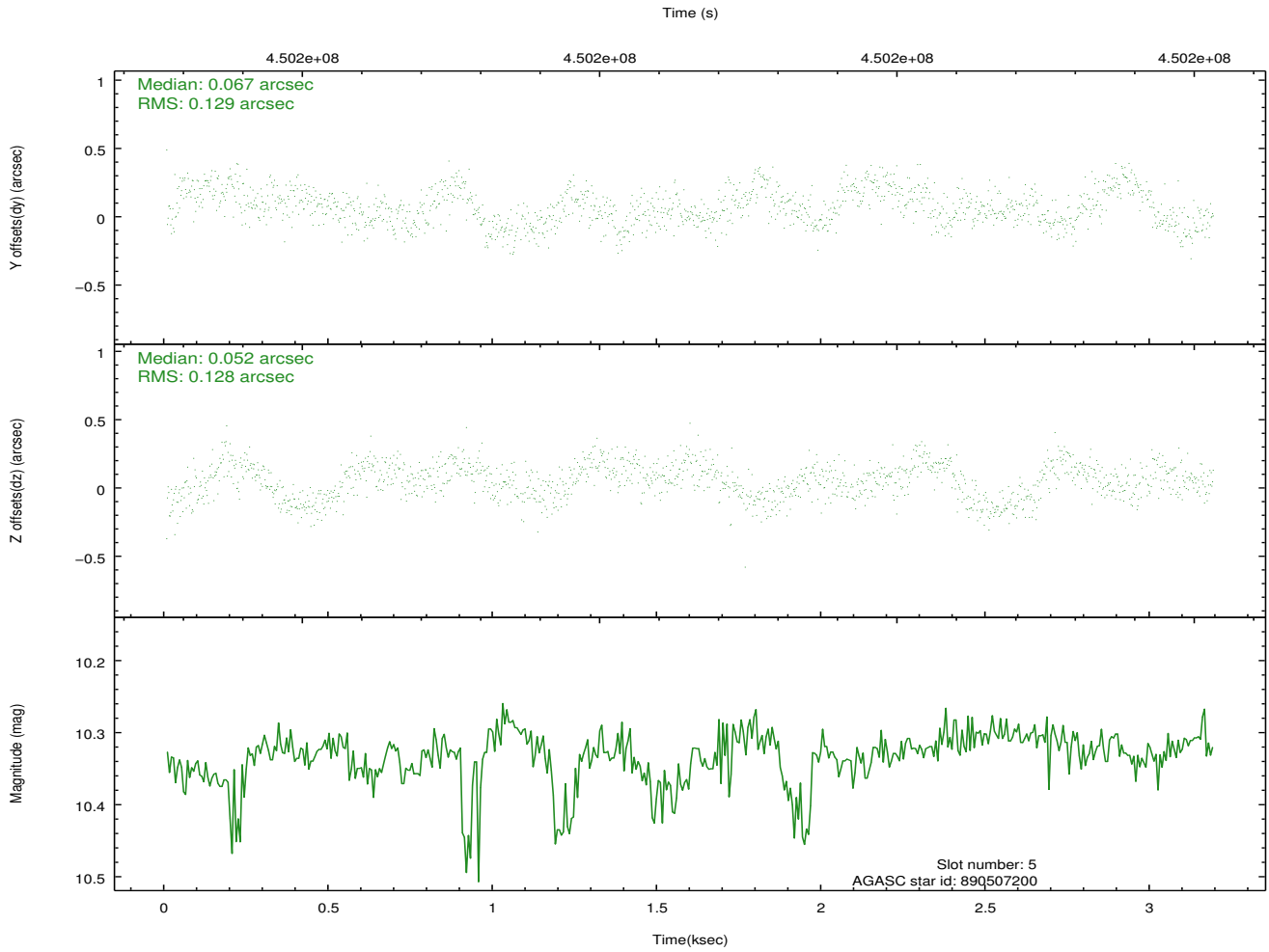
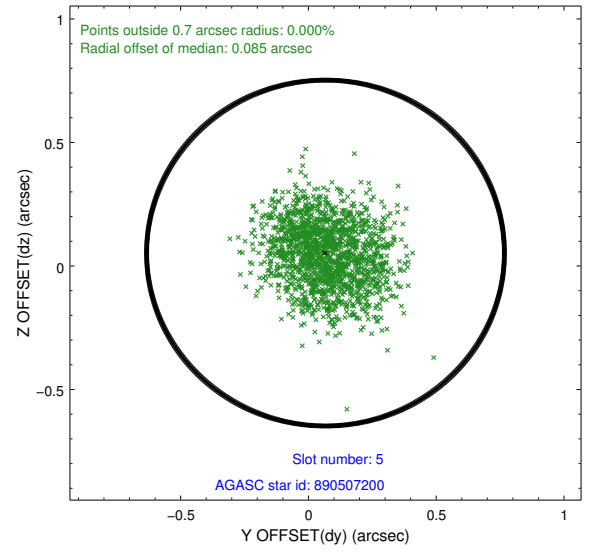
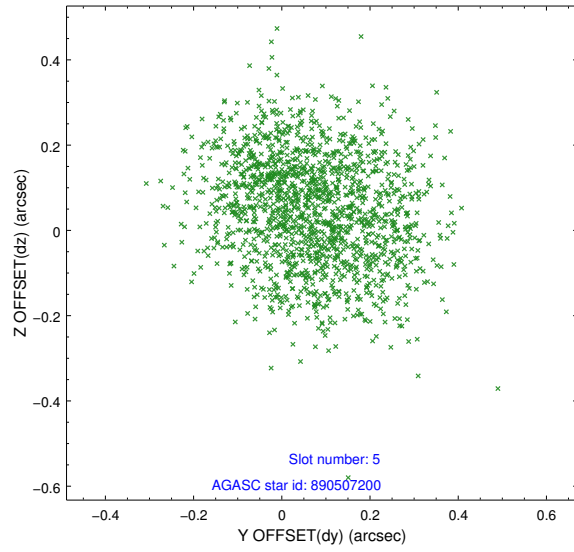
2.4.1 Slot 3



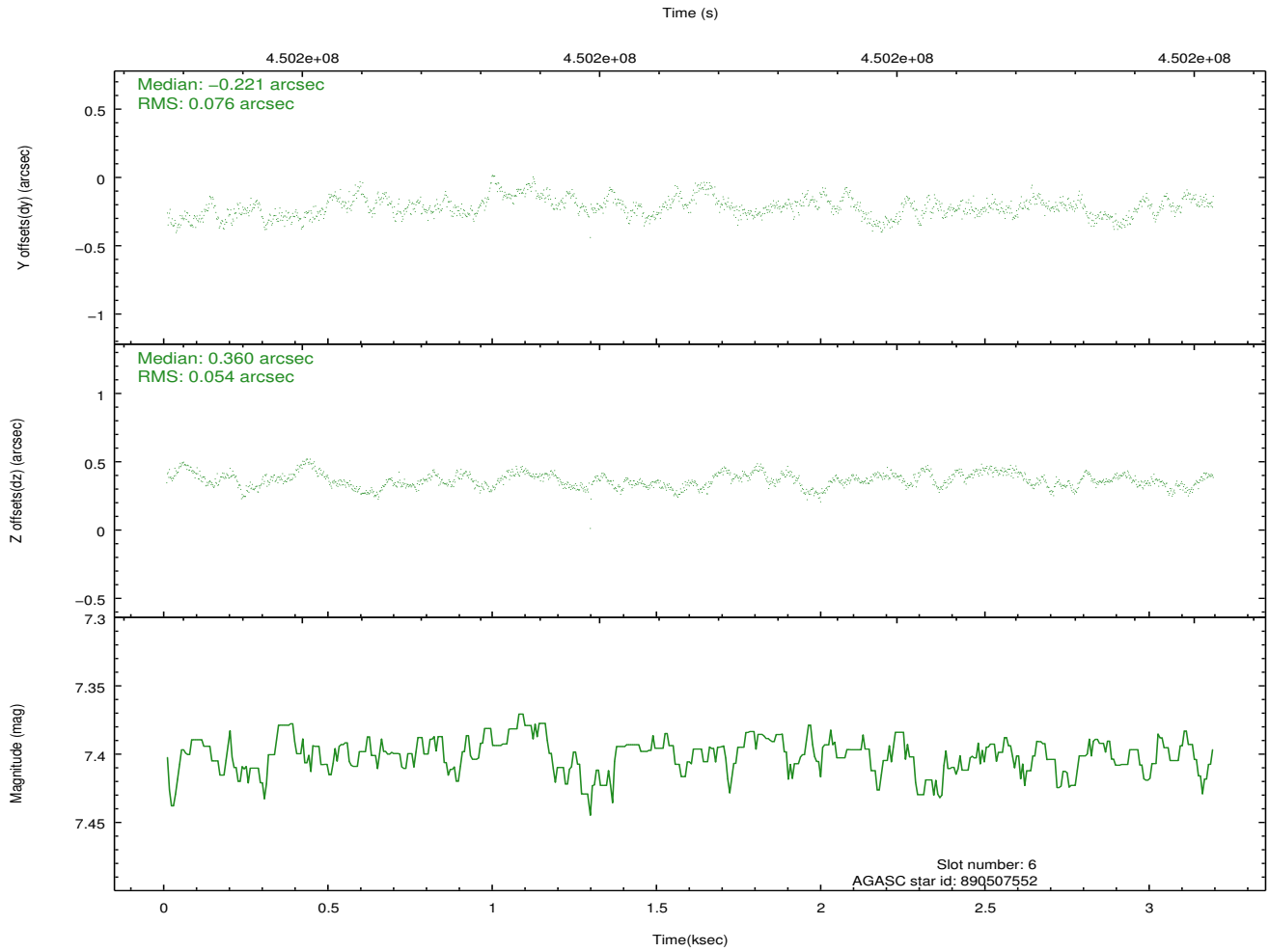
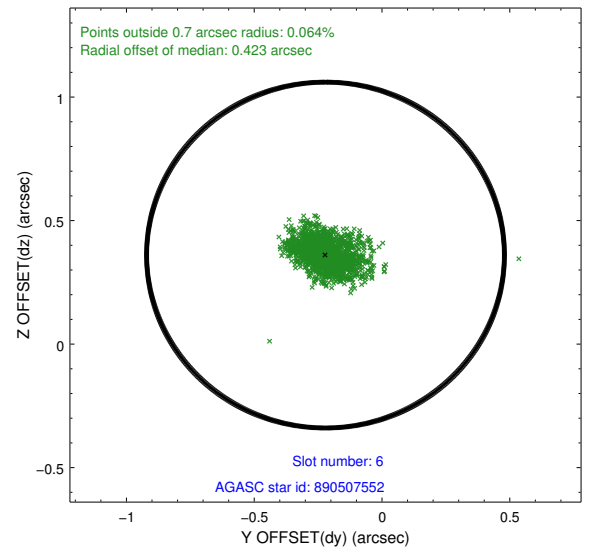
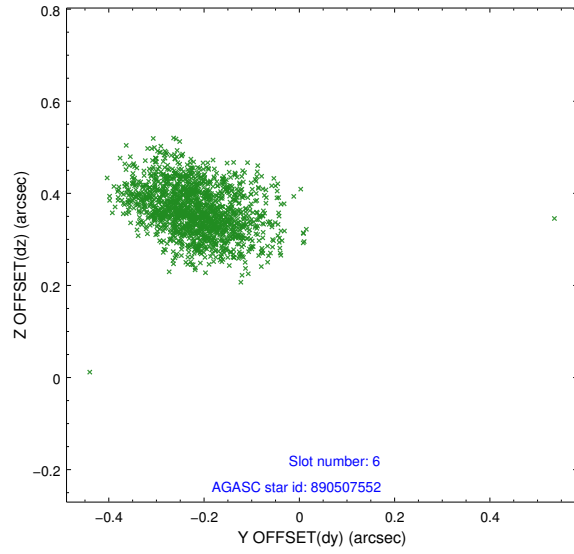
2.4.2 Slot 4



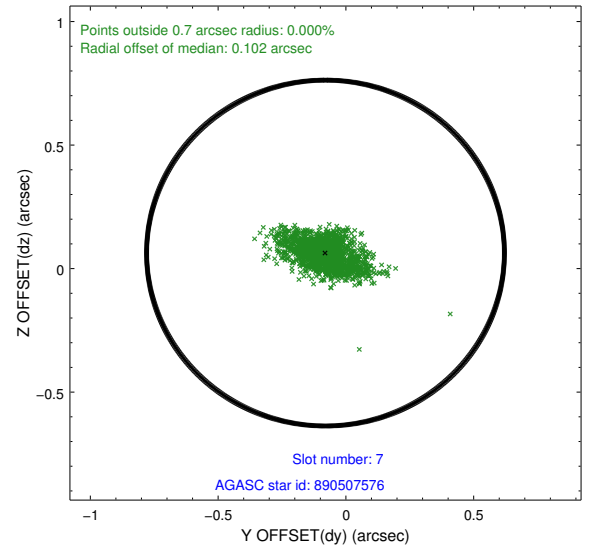
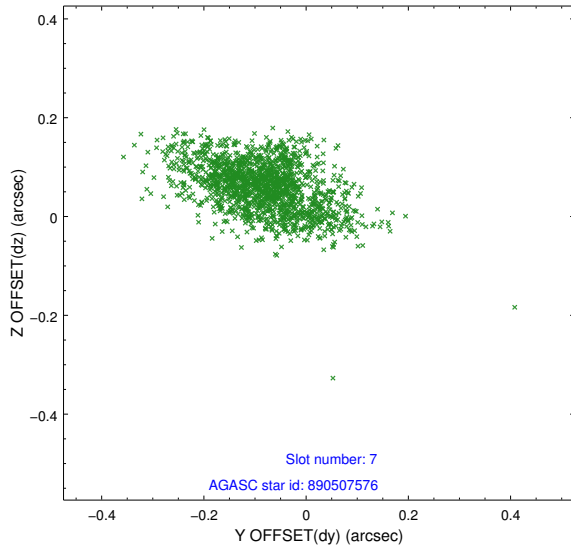
2.4.3 Slot 5



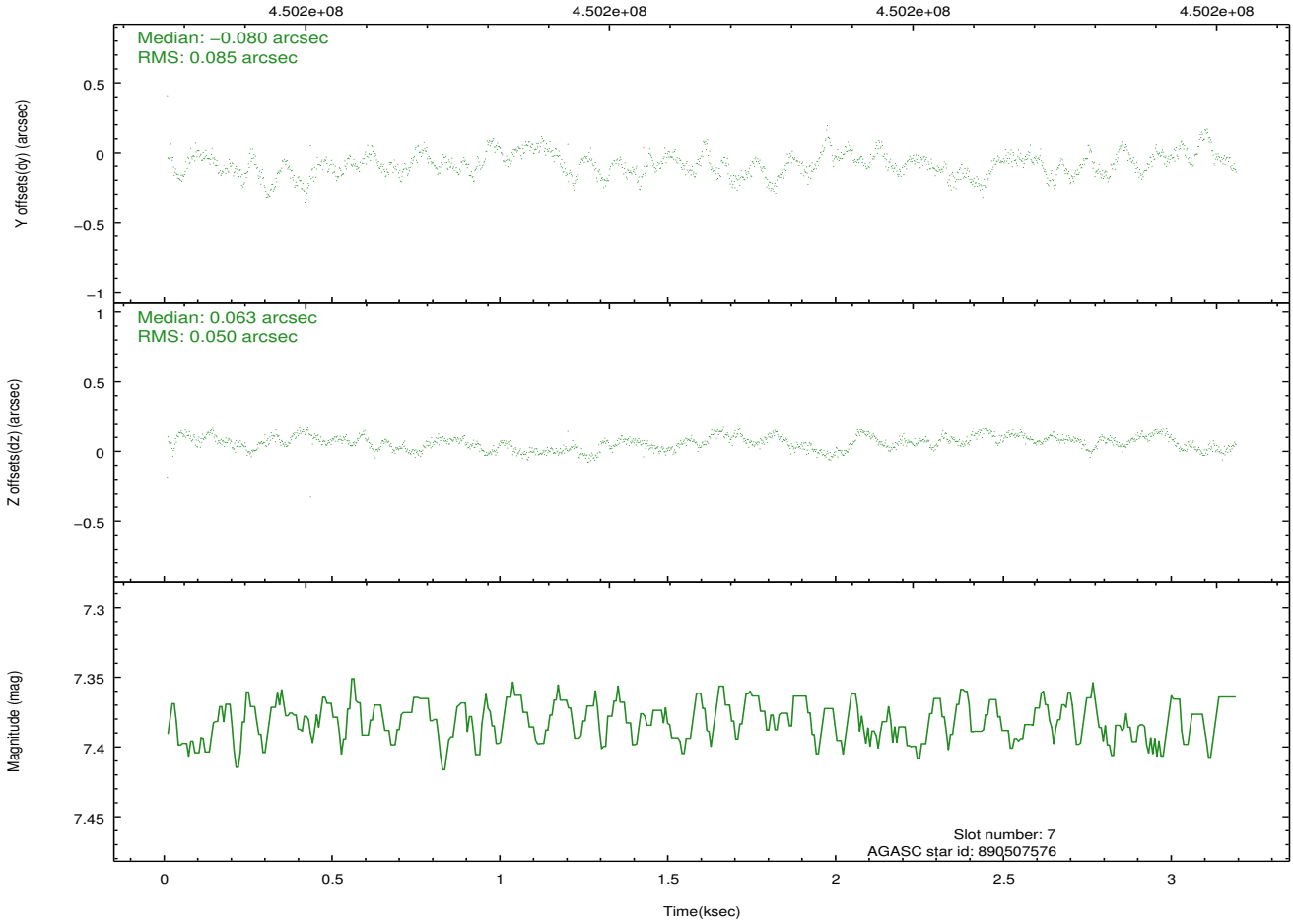
2.4.4 Slot 6



2.4.5 Slot 7

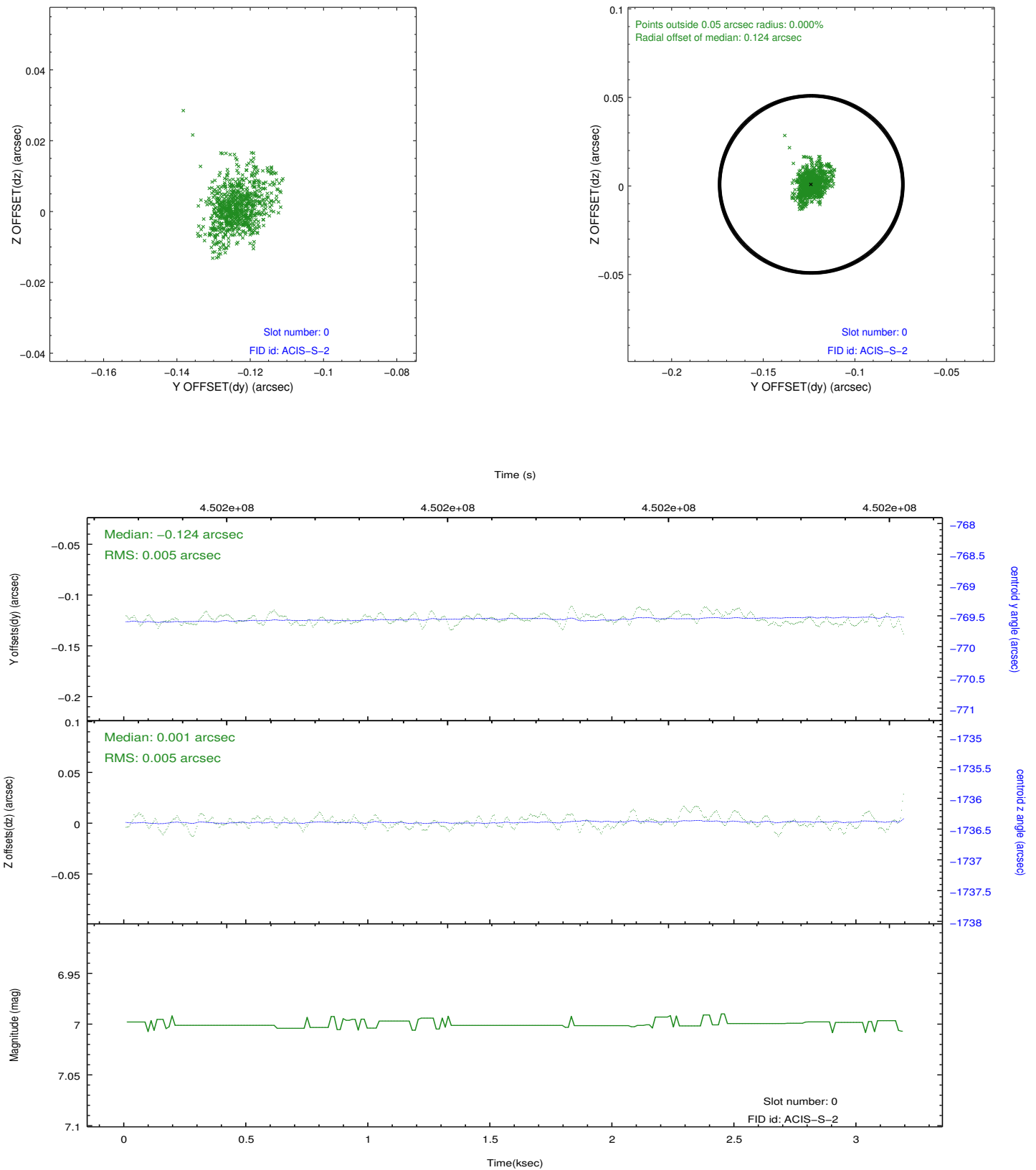


Time (s)

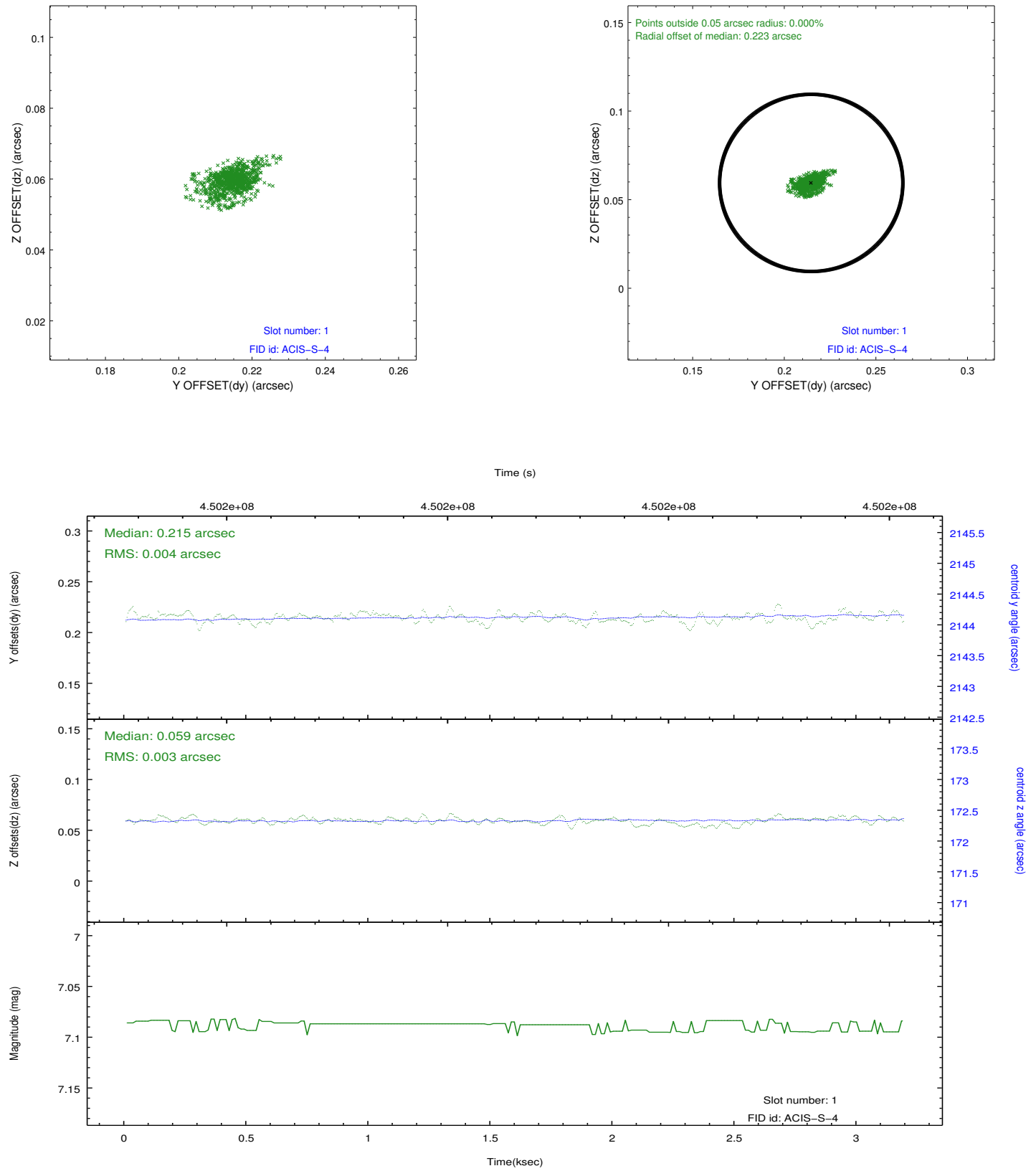


2.5 FID Slots

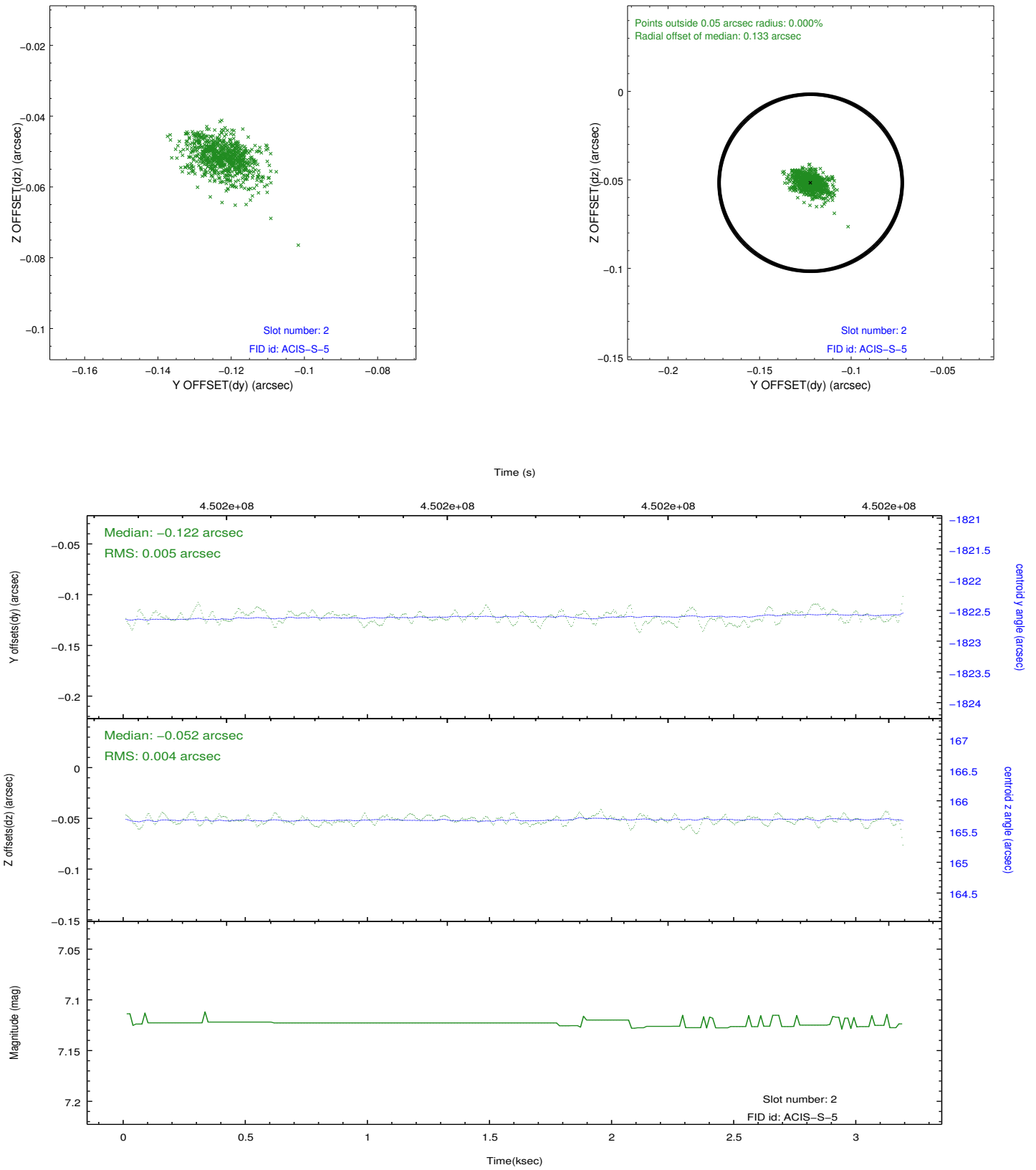
2.5.1 Slot 0



2.5.2 Slot 1



2.5.3 Slot 2



A Summary

A.1 Status

V&V Scientist	Jen Lauer
V&V Date (YYYY-MM-DD)	2012.04.09
V&V Edition	1
V&V Disposition and Status	OK
V&V Charge Time	3.0703806146979

A.2 Comments

Phase constraint met.