

# V&V Reference Report

## L2 ASCDS Version : 8.4.5

Observation 13018 - L2 Version 2  
Chandra X-Ray Center

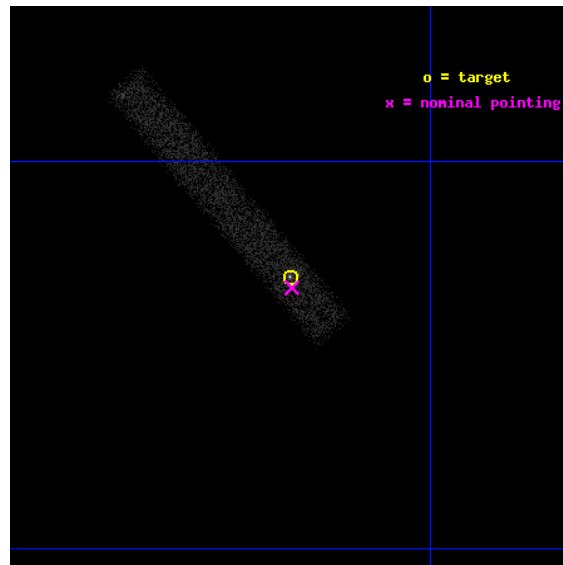
L2 Processing Date : Jul 3 2012

## Contents

<b>1</b>	<b>Front</b>	<b>2</b>
<b>2</b>	<b>OBI</b>	<b>3</b>
2.1	OBI . . . . .	3
2.1.1	Images . . . . .	3
2.1.2	Bias . . . . .	3
2.1.3	Parameters . . . . .	4
2.1.4	Events . . . . .	4
2.2	Compared Parameters . . . . .	5
2.3	Aspect . . . . .	6
2.4	Star Slots . . . . .	9
2.4.1	Slot 3 . . . . .	9
2.4.2	Slot 4 . . . . .	10
2.4.3	Slot 5 . . . . .	11
2.4.4	Slot 6 . . . . .	12
2.4.5	Slot 7 . . . . .	13
2.5	FID Slots . . . . .	14
2.5.1	Slot 0 . . . . .	14
2.5.2	Slot 1 . . . . .	15
2.5.3	Slot 2 . . . . .	16
<b>A</b>	<b>Summary</b>	<b>17</b>
A.1	Status . . . . .	17
A.2	Comments . . . . .	17

# 1 Front

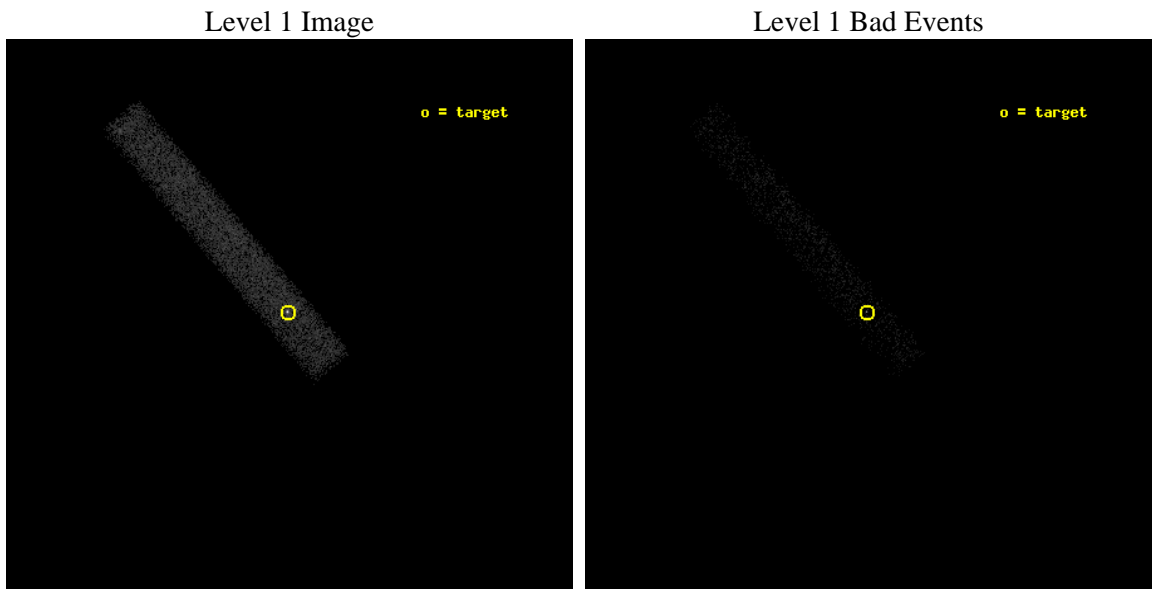
seq_num	401280	Sequence number
obs_id	13018	Observation id
title	An Irradiated Disk in an Ultraluminous X-Ray Source	Proposal title
observer	Prof. Philip Kaaret	Principal investigator
object	NGC 5408 X-1	Source name
dtcycle	0	&#160
cycle	P	events from which exps? Prim/Second/Both
ra_targ	210.831667	Observer's specified target RA [deg]
dec_targ	-41.382917	Observer's specified target Dec [deg]
ra_nom	210.83068723549	Nominal RA [deg]
dec_nom	-41.387732875471	Nominal Dec [deg]
roll_nom	229.55734601543	Nominal Roll [deg]
revision	2	Processing version of data
ontime	12010.399284124	Sum of GTIs [s]
livetime	10892.798189846	Livetime [s]
ontime7	12010.399284124	Sum of GTIs [s]
l2events	12085	Number of level 2 events



## 2 OBI

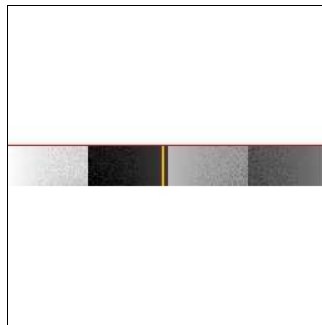
### 2.1 OBI

#### 2.1.1 Images



#### 2.1.2 Bias

Chip 7



### 2.1.3 Parameters

obi_num	0	Obi number	sched_exp_time	12000.000000	[s] Scheduled observation exposure time
ascdsver	8.4.5	Processing system revision	ontime	12010.399284124	Sum of GTIs [s]
caldsver	4.5.0	&#160	ontime7	12010.399284124	Sum of GTIs [s]
date	2012-07-03T07:42:42	Date and time of file creation	l1events	19885	Number of level 1 events
revision	2	Processing version of data			

### 2.1.4 Events

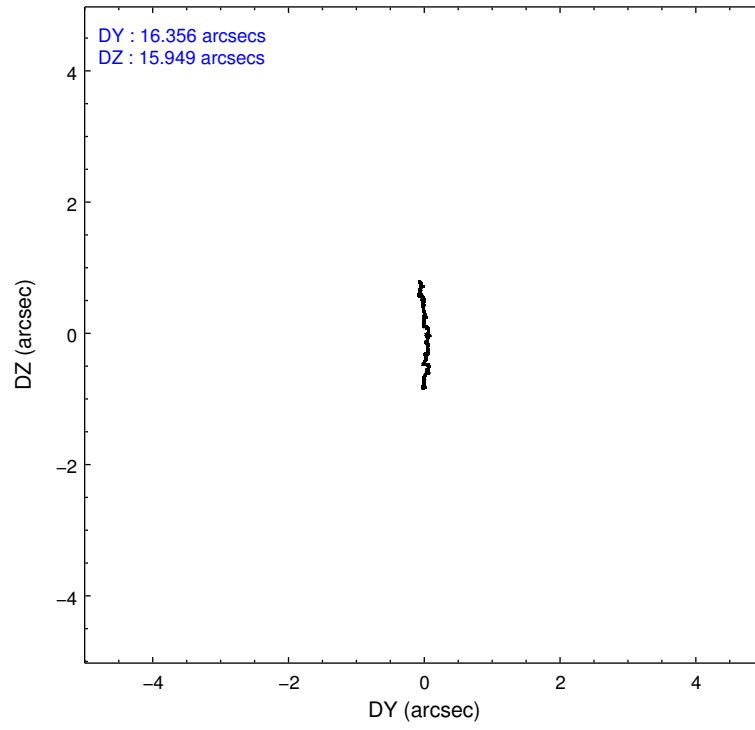
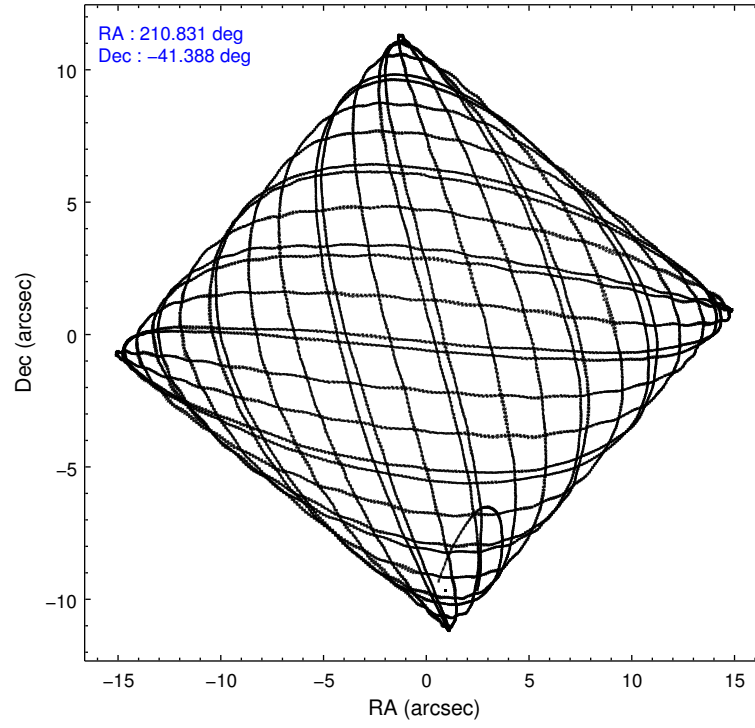
	<b>ccd 7</b>
level 1 events	19885
rejected events	7441
rejected %	37%

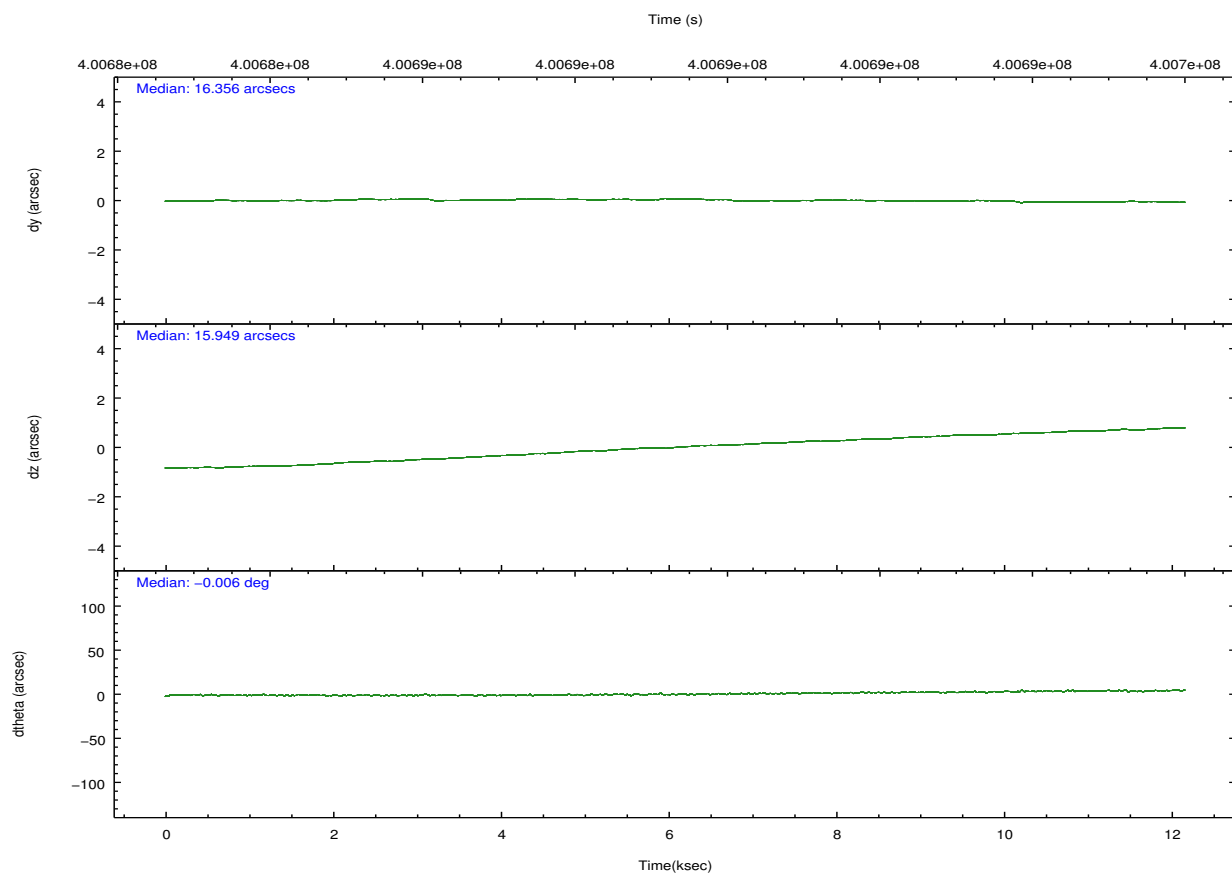
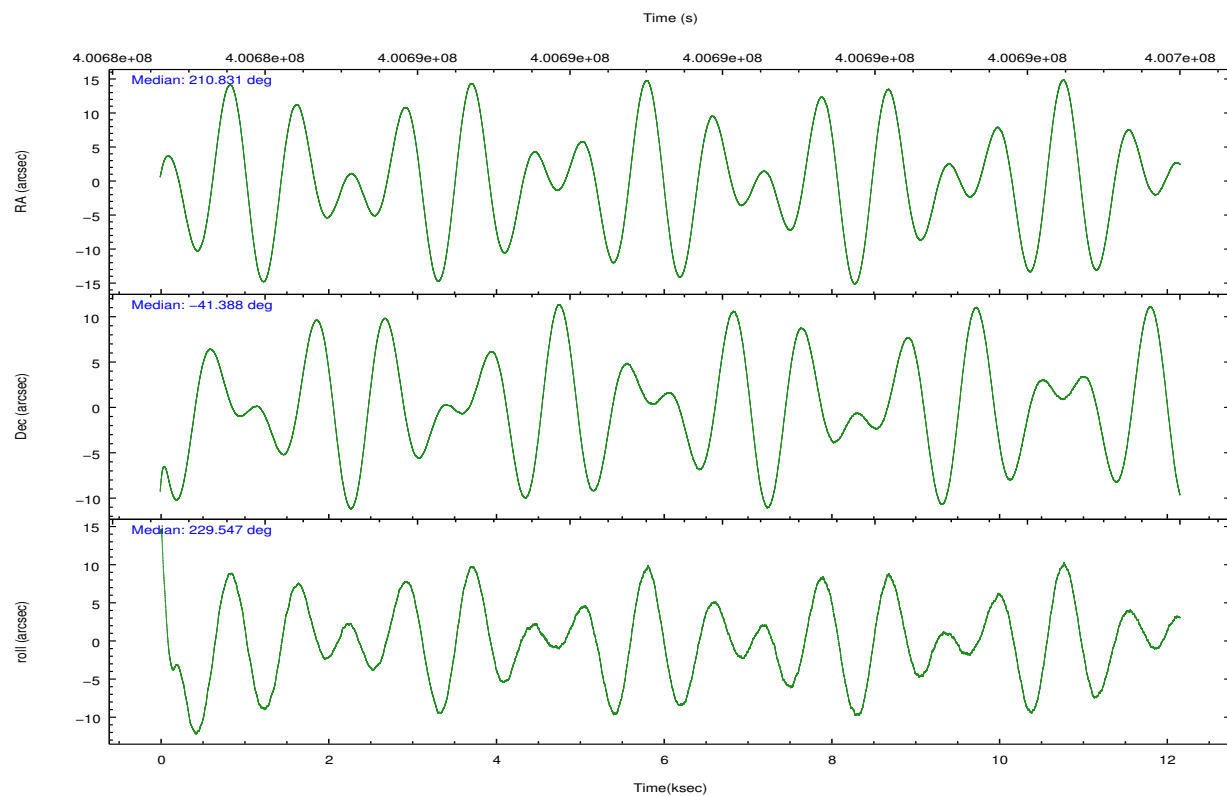
	<b>ccd 7</b>
grade 0 events	2276
	11%
grade 1 events	30
	0%
grade 2 events	2794
	14%
grade 3 events	1678
	8%
grade 4 events	1563
	7%
grade 5 events	1594
	8%
grade 6 events	4134
	20%
grade 7 events	5816
	29%

## 2.2 Compared Parameters

Parameter	Planned	Actual	Parameter	Planned	Actual
Instrument	ACIS	ACIS	Obspar format version number	7	7
Detector	ACIS-7	ACIS-7	Obspar file type	PREDICTED	ACTUAL
Grating	NONE	NONE	Obspar update status	NONE	UPDATED
Data mode	FAINT	FAINT	Number of optional ACIS chips dropped	0	0
Observation mode	POINTING	POINTING	On-chip summing requested	N	N
[deg] Pointing RA	210.836794	210.8306872354875	Subarray requested	CUSTOM	1/8
[deg] Pointing Dec	-41.360746	-41.38773287547112	Subarray start row	449	449
[deg] Pointing Roll	229.404747	229.5573460154324	Subarray row count	128	128
[mm] SIM focus pos	-0.684267	-0.6828225247311905	Alternating exposures requested	N	N
[mm] SIM defocus	0	0.001444936568705701	[s] Primary exposure time	0.000000	0.4
[mm] SIM translation stage pos	-190.132523	-190.1425803651734			
[mm] SIM translation stage offset	0	0.01005778216563158			
[s] Observation start time (MET)	400683383.184000	400682234.50619			
Observation start date	2010-09-12T12:55:17	2010-09-12T12:37:14			
[s] Observation end time (MET)	400695383.184000	400696216.53191			
Observation end date	2010-09-12T16:15:17	2010-09-12T16:30:16			
Read mode	TIMED	TIMED			

## 2.3 Aspect



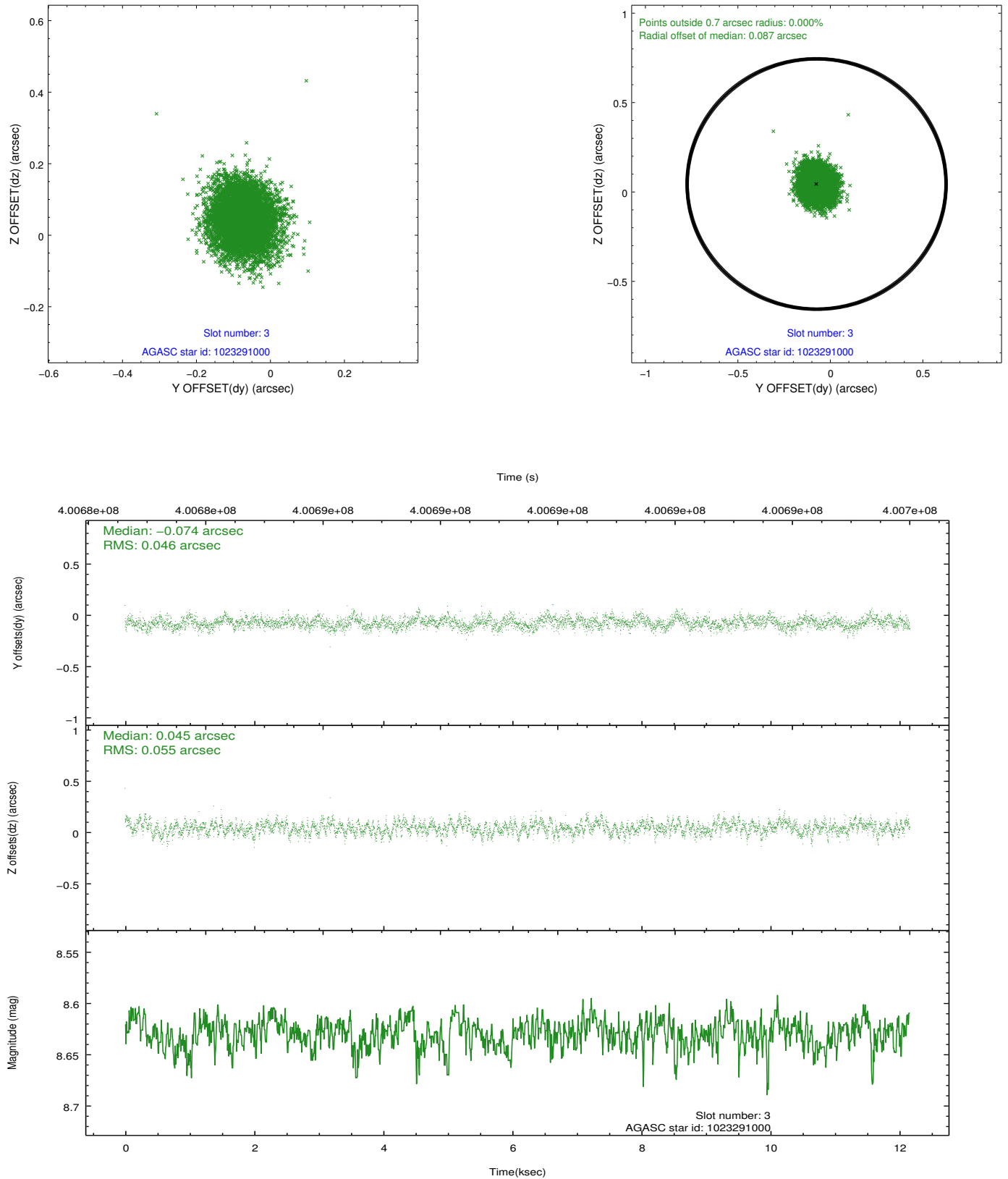


### Slot Statistics

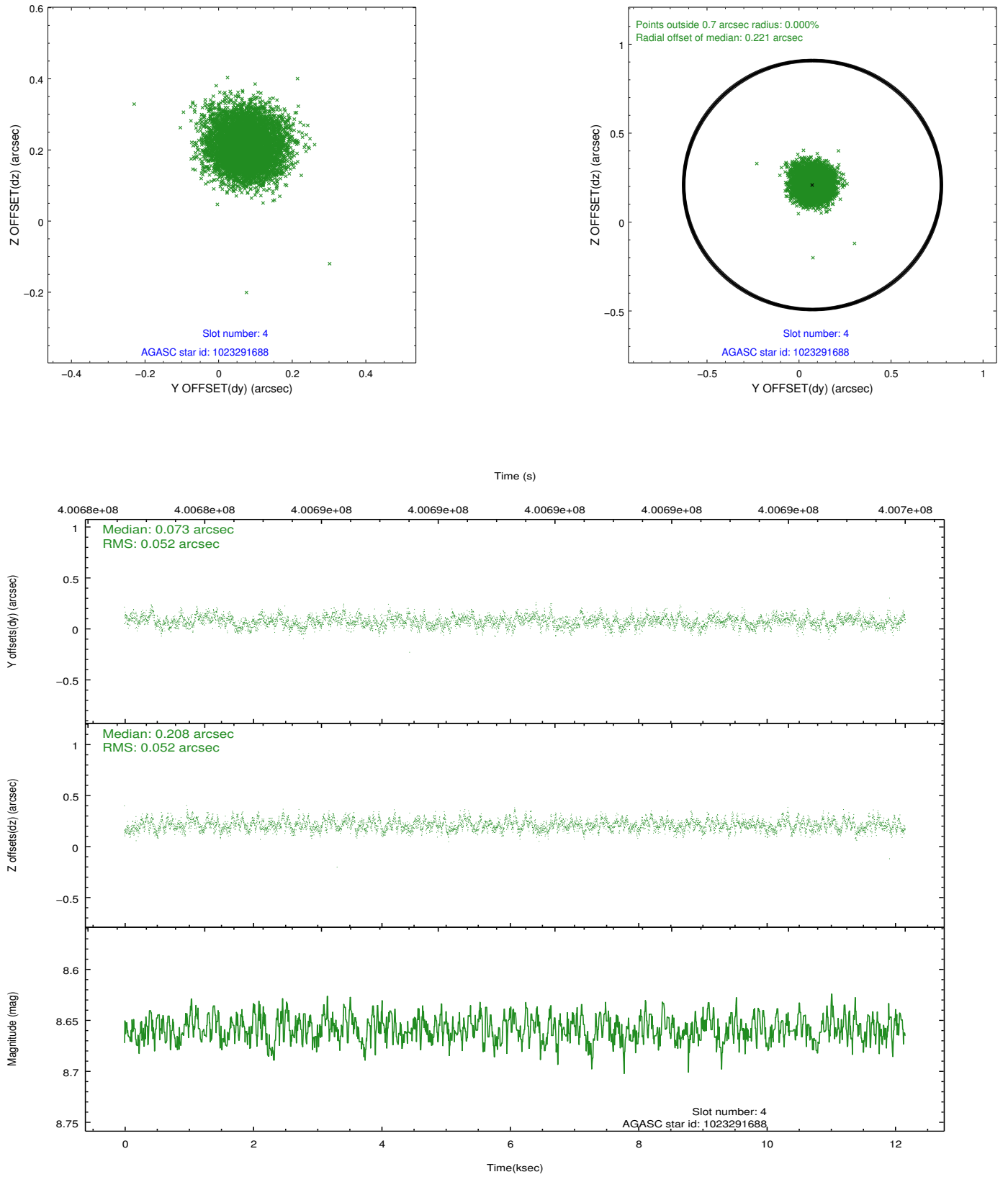
slot	status	id	mag	n_pts	med_dy	med_dz	dr1	dr2	ra	dec	mean_y	mean_z
0	FID	ACIS-S-4	7.04	2965	0.168	-0.023	0.008	0.013	0.000000	0.000000	2144.15	171.40
1	FID	ACIS-S-5	7.08	2966	-0.159	-0.008	0.007	0.012	0.000000	0.000000	-1821.85	164.86
2	FID	ACIS-S-6	7.18	2967	-0.038	0.045	0.009	0.016	0.000000	0.000000	391.74	808.69
3	GUIDE	1023291000	8.63	5931	-0.074	0.045	0.076	0.123	210.097476	-41.108006	621.42	-2109.03
4	GUIDE	1023291688	8.66	5931	0.073	0.208	0.079	0.126	210.168569	-41.185177	704.17	-1781.38
5	GUIDE	1023822680	8.87	5929	0.058	0.035	0.092	0.150	211.176618	-41.286245	-799.62	524.16
6	GUIDE	1023824024	7.52	5934	-0.061	-0.072	0.057	0.094	210.697872	-41.987484	1955.32	1186.54
7	GUIDE	1023829016	6.59	5933	0.006	-0.210	0.093	0.153	210.864452	-41.423345	123.46	203.29

## 2.4 Star Slots

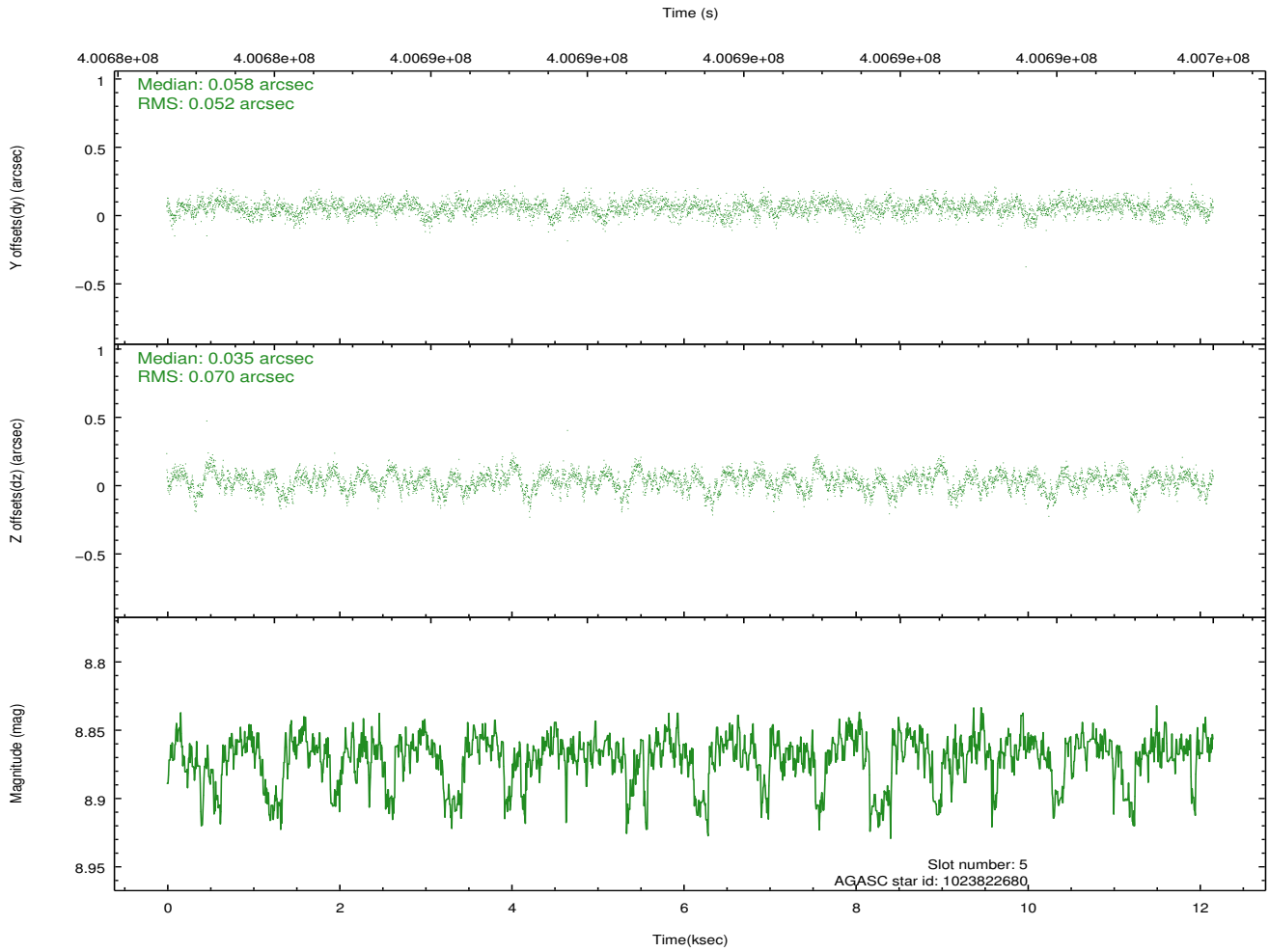
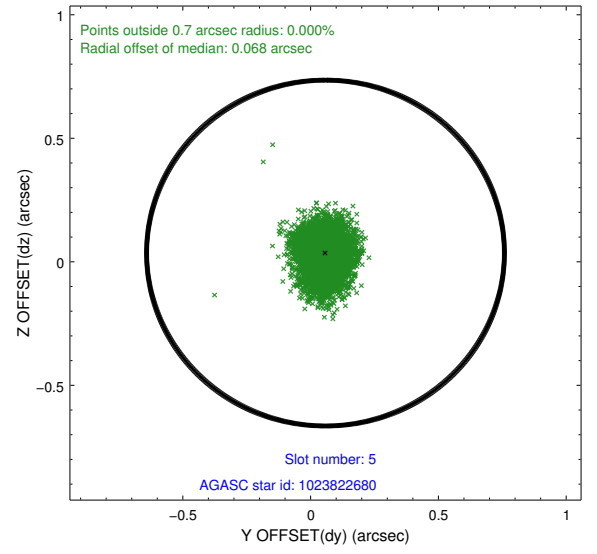
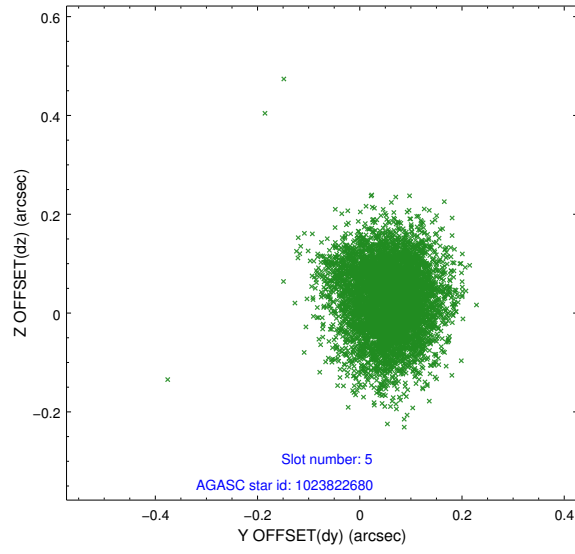
### 2.4.1 Slot 3



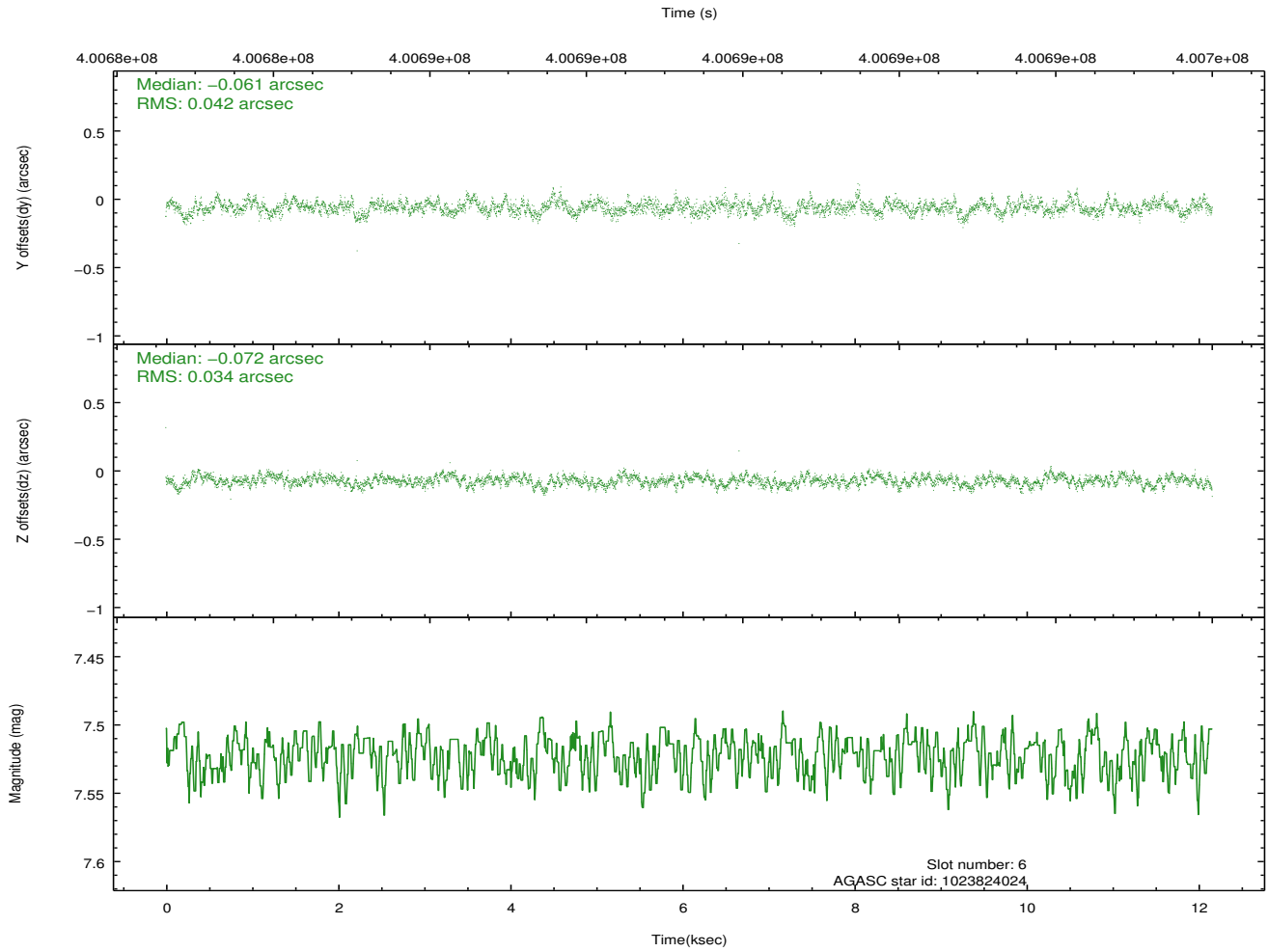
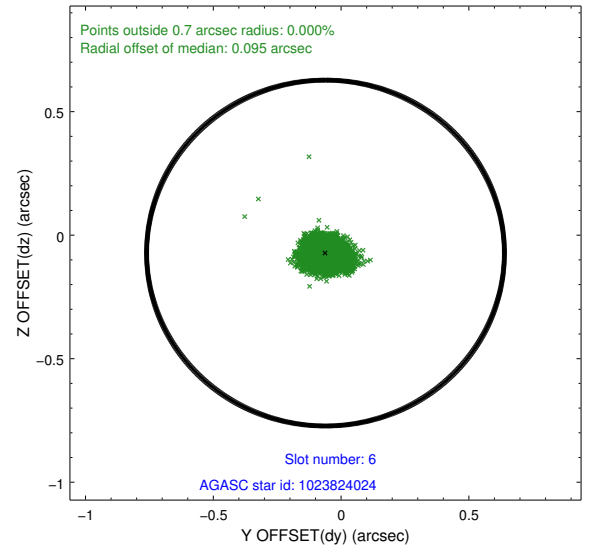
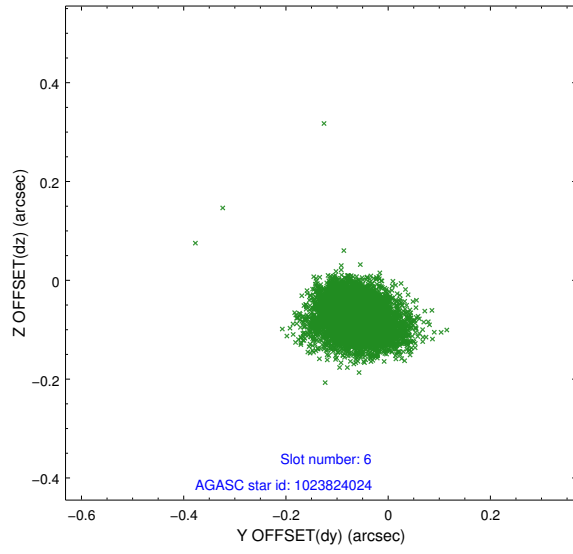
## 2.4.2 Slot 4



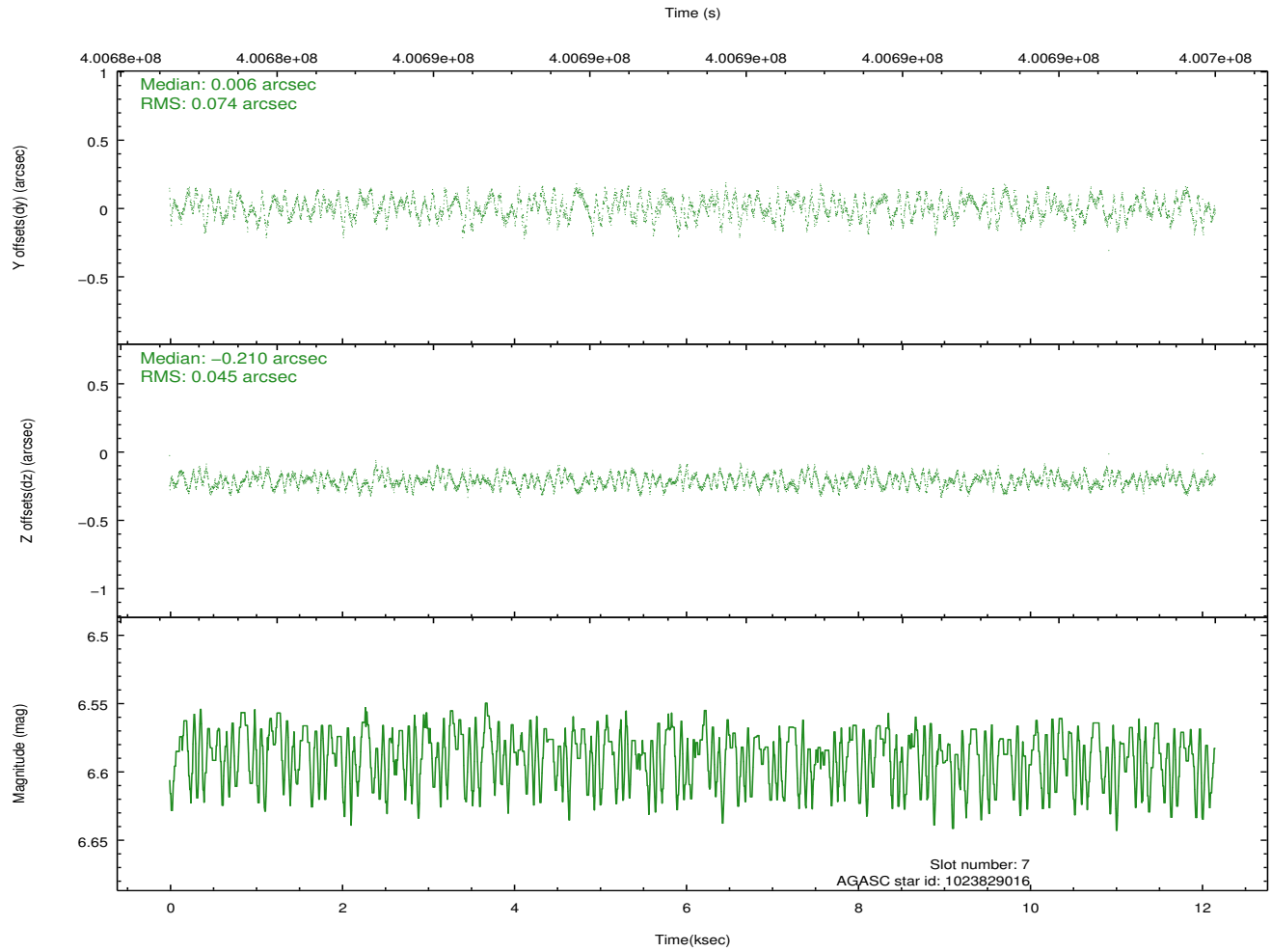
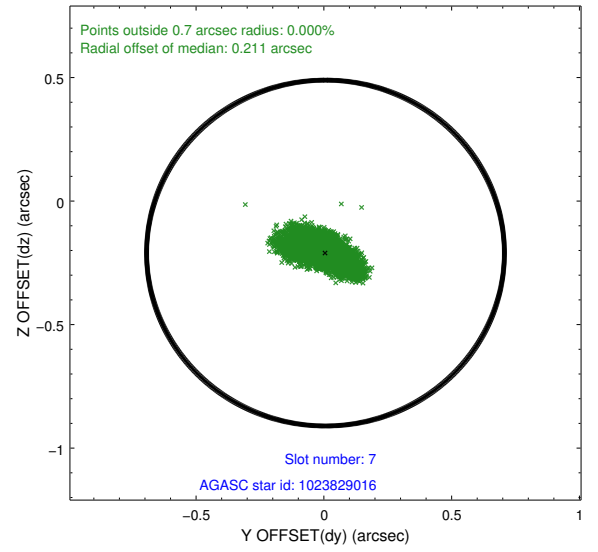
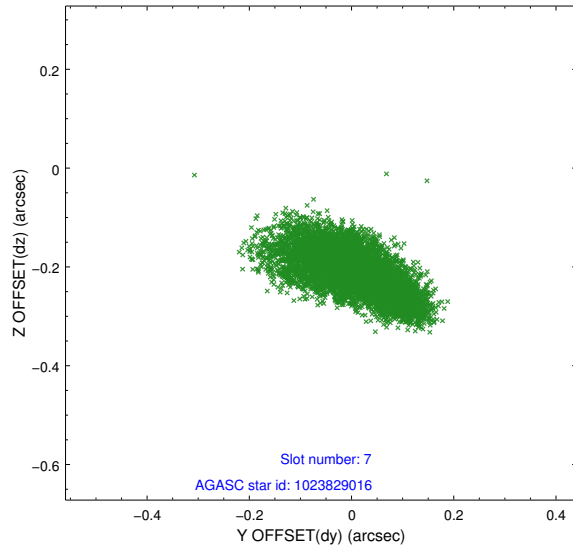
### 2.4.3 Slot 5



## 2.4.4 Slot 6

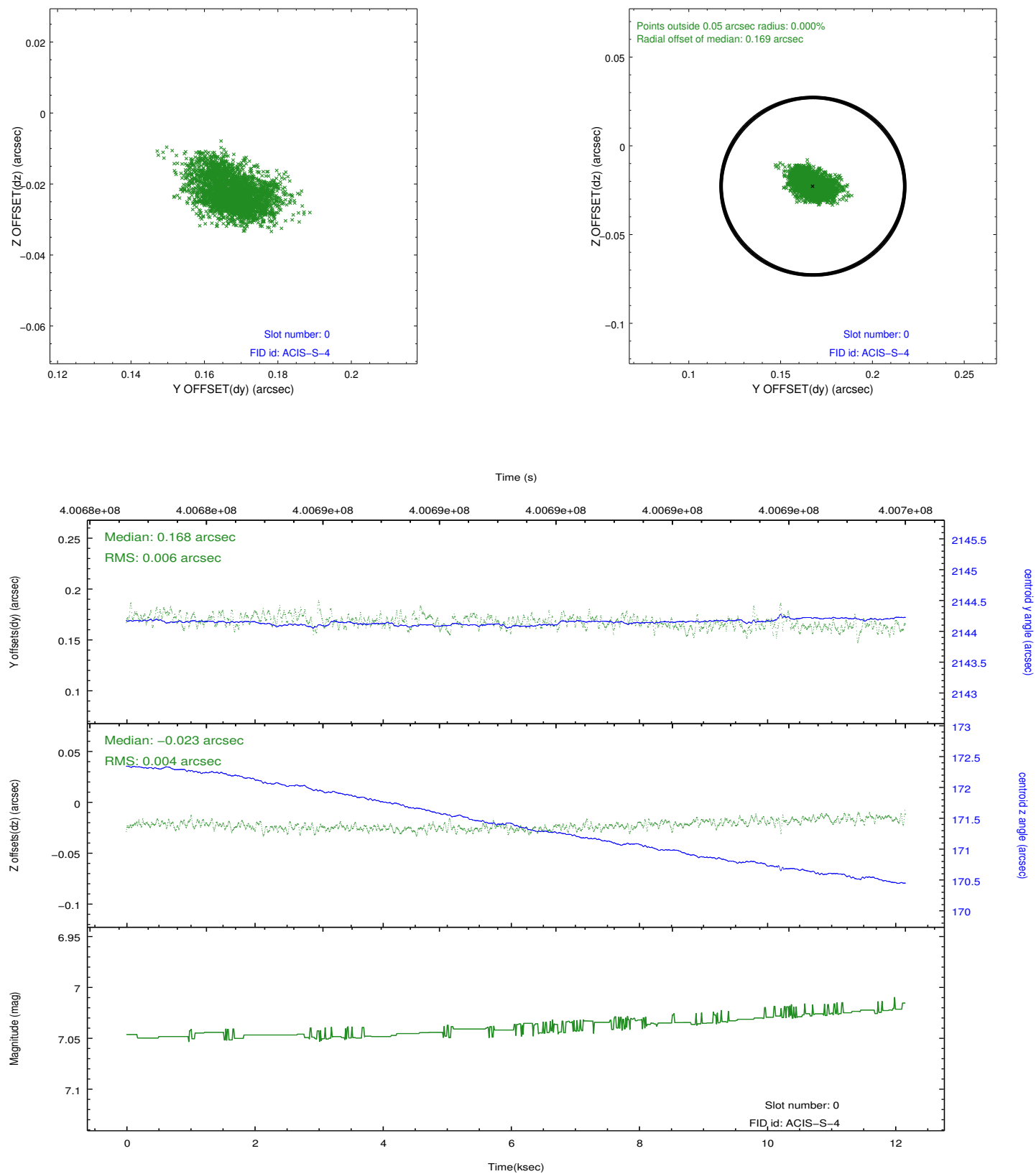


## 2.4.5 Slot 7

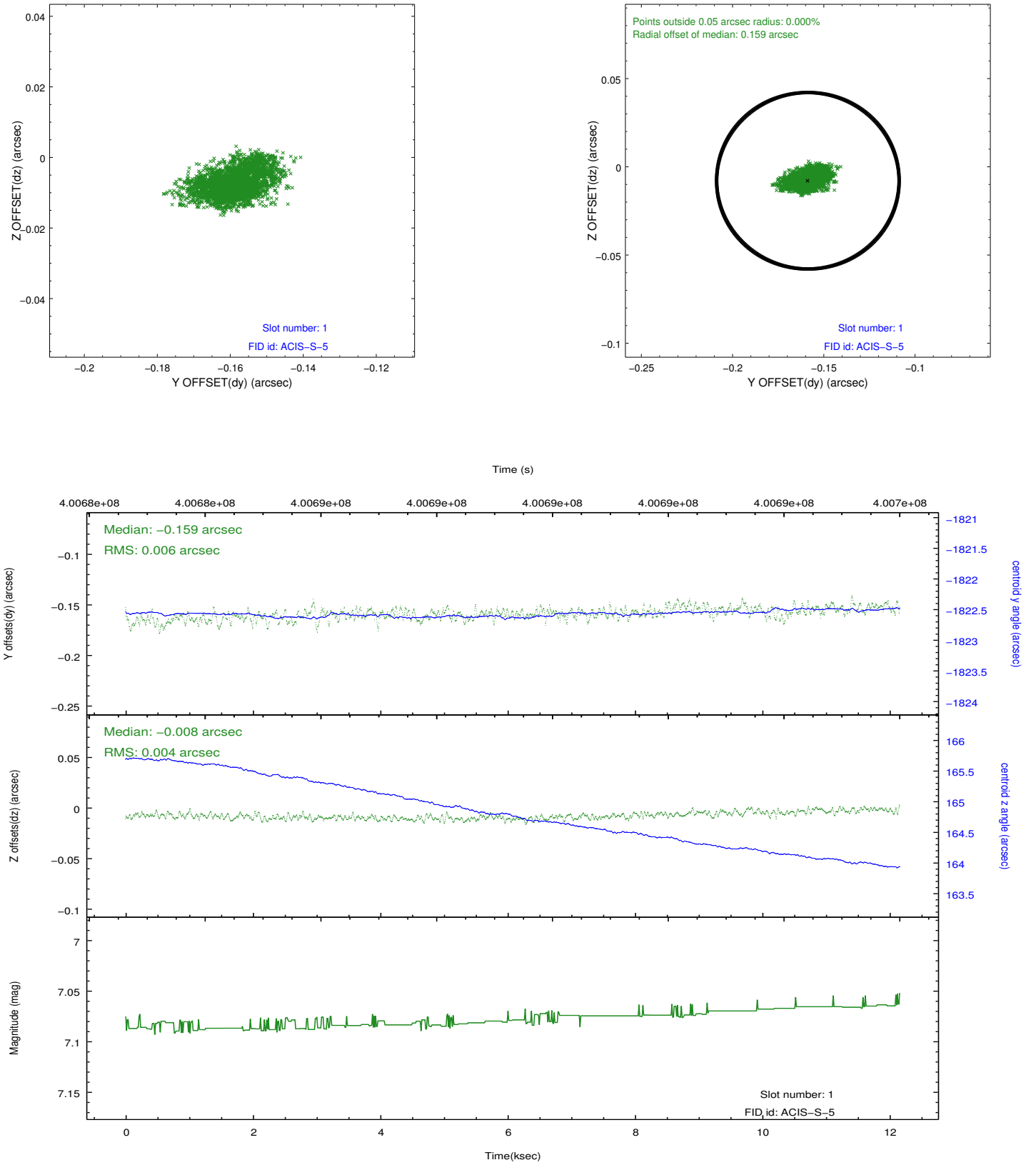


## 2.5 FID Slots

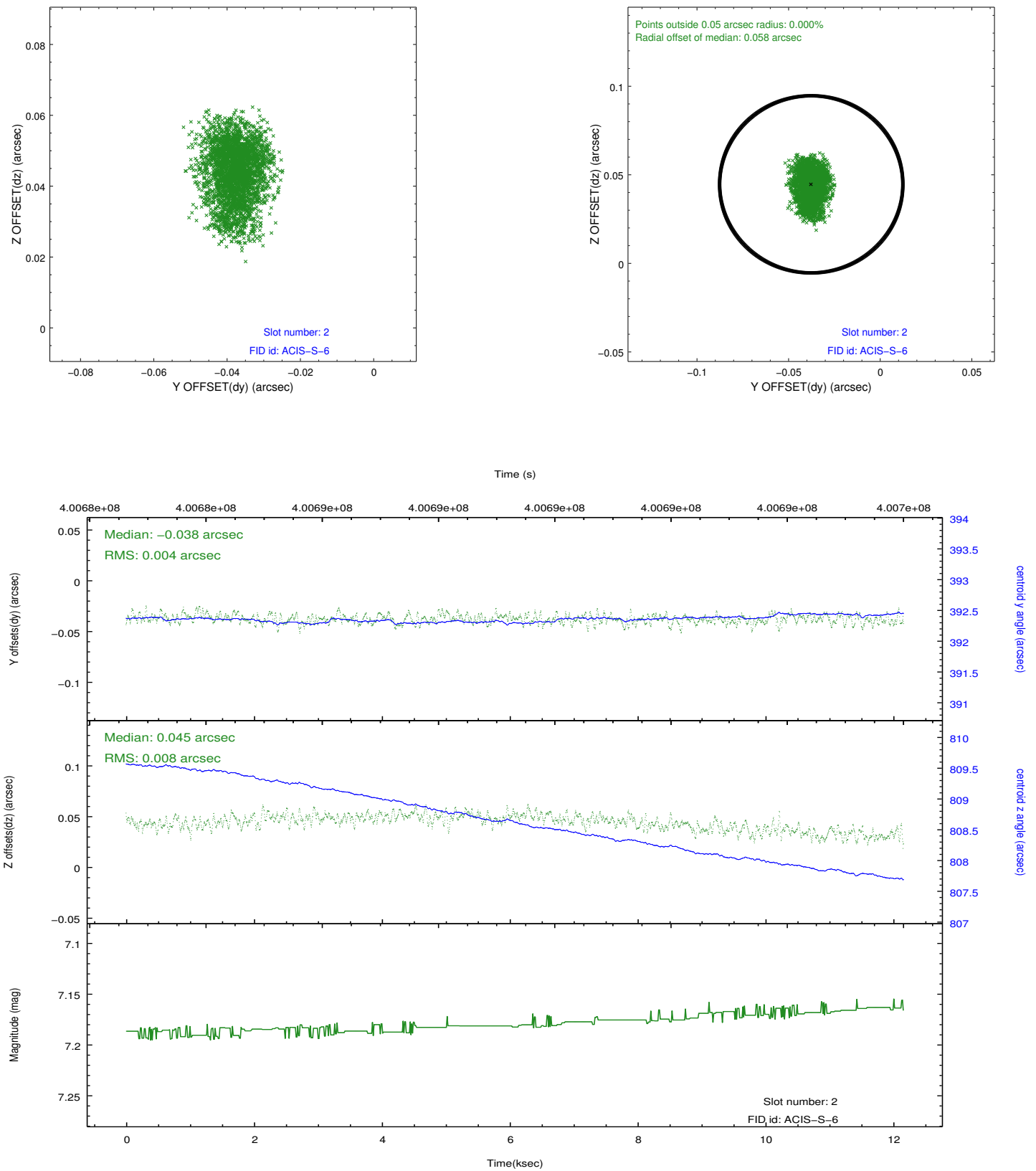
### 2.5.1 Slot 0



## 2.5.2 Slot 1



### 2.5.3 Slot 2



## A Summary

### A.1 Status

V&V Scientist	Jen Lauer
V&V Date (YYYY-MM-DD)	2012.07.11
V&V Edition	1
V&V Disposition and Status	OK
V&V Charge Time	12.010399284124

### A.2 Comments

Joint proposal with HST.