

V&V Reference Report

L2 ASCDS Version : 8.4.5

Observation 12998 - L2 Version 2
Chandra X-Ray Center

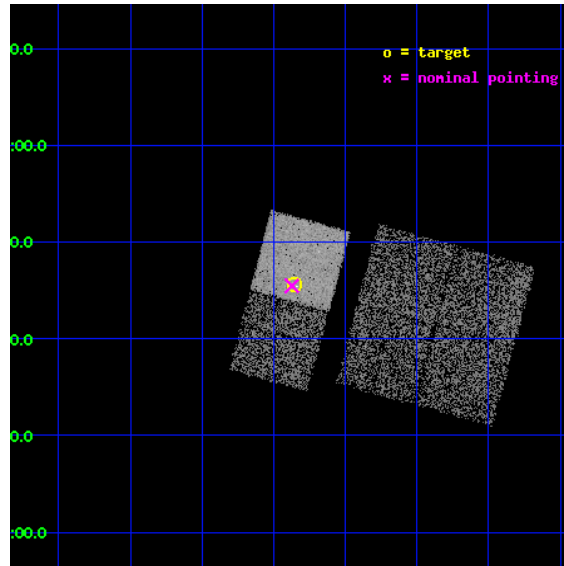
L2 Processing Date : Jul 5 2012

Contents

1	Front	2
2	OBI	3
2.1	OBI	3
2.1.1	Images	3
2.1.2	Bias	3
2.1.3	Parameters	4
2.1.4	Events	4
2.2	Compared Parameters	5
2.3	Aspect	6
2.4	Star Slots	9
2.4.1	Slot 3	9
2.4.2	Slot 4	10
2.4.3	Slot 5	11
2.4.4	Slot 6	12
2.4.5	Slot 7	13
2.5	FID Slots	14
2.5.1	Slot 0	14
2.5.2	Slot 1	15
2.5.3	Slot 2	16
A	Summary	17
A.1	Status	17
A.2	Comments	17

1 Front

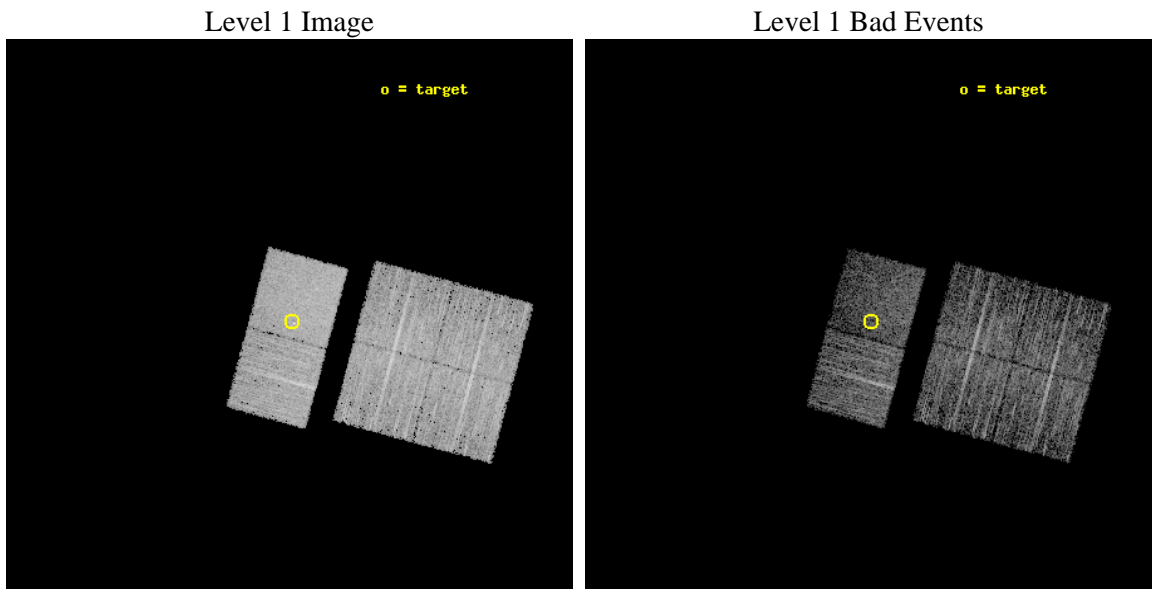
seq_num	600962	Sequence number
obs_id	12998	Observation id
title	The brightest ultraluminous X-ray sources across the sky	Proposal
observer	Dr Jifeng Liu	Principal investigator
object	J230921.5+004540	Source name
dtcycle	0	
cycle	P	events from which exps? Prim/Second/Both
ra_targ	347.339583	Observer's specified target RA [deg]
dec_targ	0.761111	Observer's specified target Dec [deg]
ra_nom	347.34315932897	Nominal RA [deg]
dec_nom	0.75784942324752	Nominal Dec [deg]
roll_nom	285.07364830129	Nominal Roll [deg]
revision	2	Processing version of data
ontime	4751.999982357	Sum of GTIs [s]
livetime	4691.8272972696	Livetime [s]
ontime0	4751.999982357	Sum of GTIs [s]
ontime1	4751.999982357	Sum of GTIs [s]
ontime2	4751.999982357	Sum of GTIs [s]
ontime3	4751.999982357	Sum of GTIs [s]
ontime6	4751.999982357	Sum of GTIs [s]
ontime7	4751.999982357	Sum of GTIs [s]
l2events	35024	Number of level 2 events



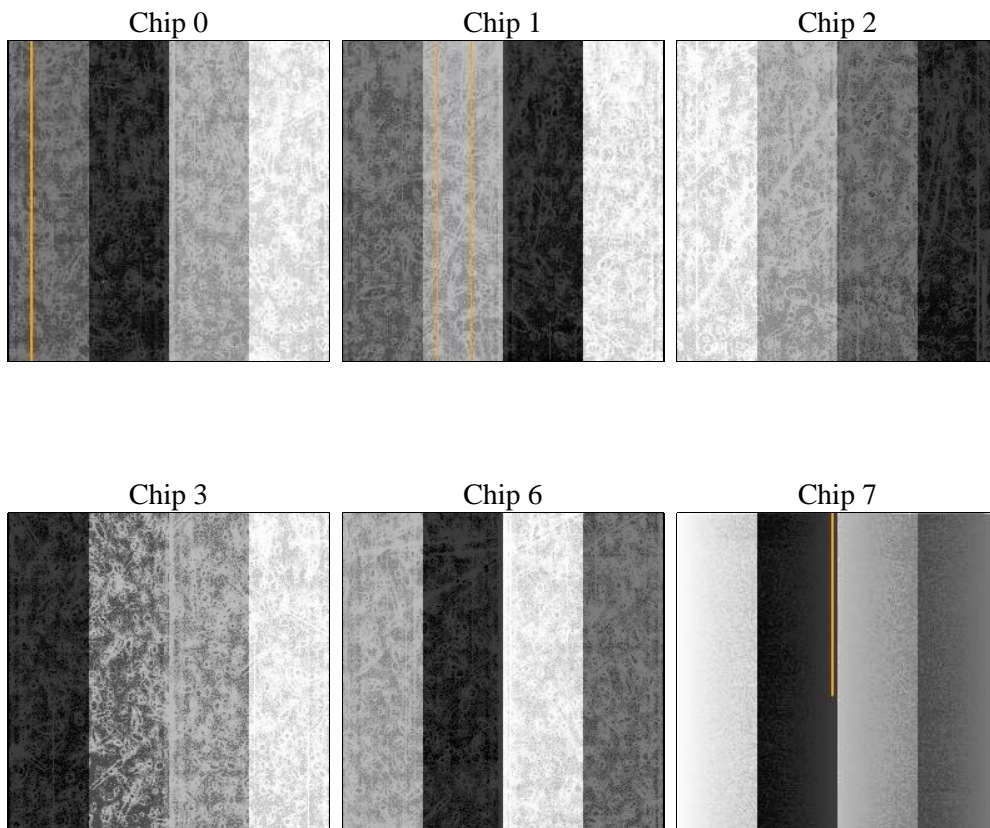
2 OBI

2.1 OBI

2.1.1 Images



2.1.2 Bias



2.1.3 Parameters

obi_num	0	Obi number	sched_exp_time	5000.012000	[s] Scheduled observation exposure time
ascdsver	8.4.5	Processing system revision	ontime	4751.999982357	Sum of GTIs [s]
caldsver	4.5.0	 	ontime0	4751.999982357	Sum of GTIs [s]
date	2012-07-05T05:26:33	Date and time of file creation	ontime1	4751.999982357	Sum of GTIs [s]
revision	2	Processing version of data	ontime2	4751.999982357	Sum of GTIs [s]
			ontime3	4751.999982357	Sum of GTIs [s]
			ontime6	4751.999982357	Sum of GTIs [s]
			ontime7	4751.999982357	Sum of GTIs [s]
			l1events	214775	Number of level 1 events

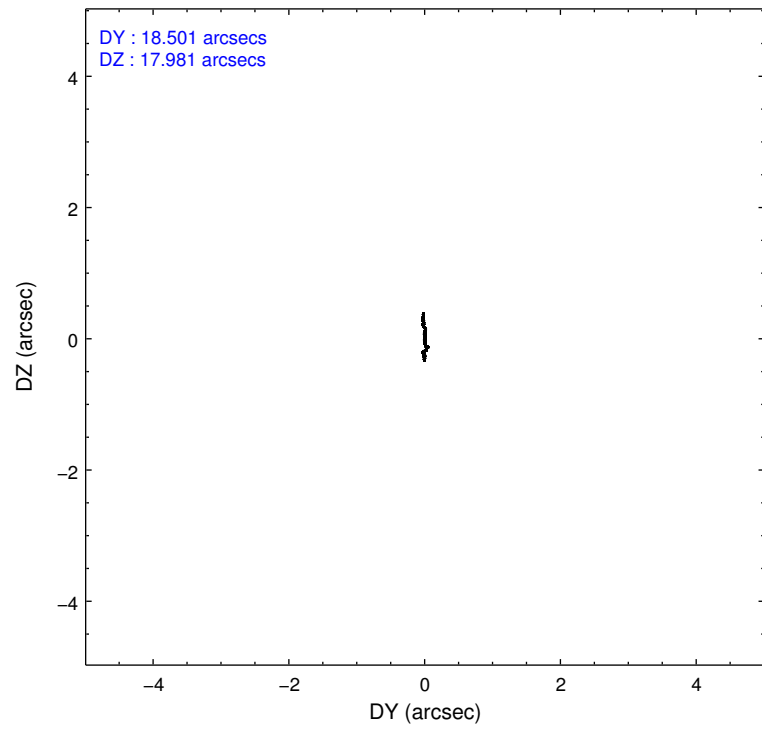
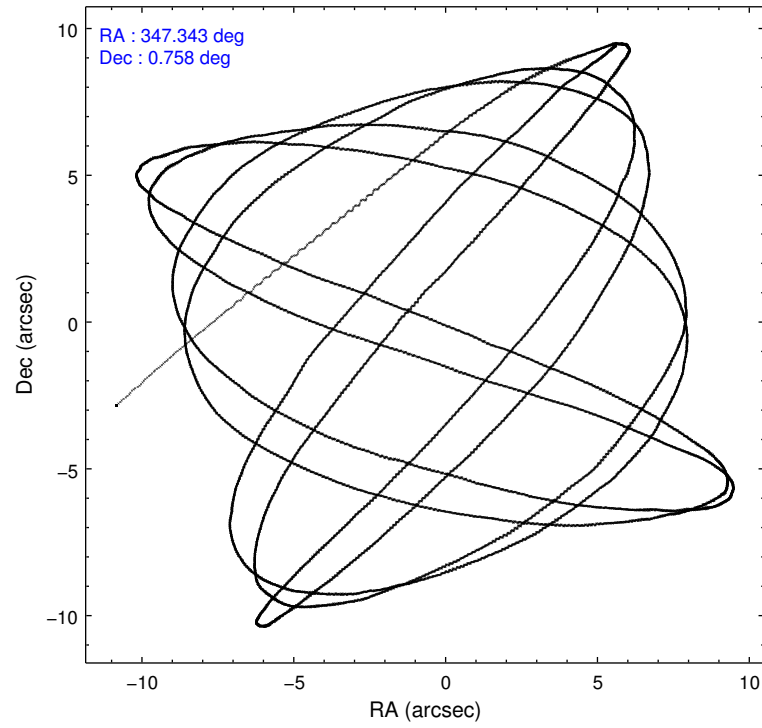
2.1.4 Events

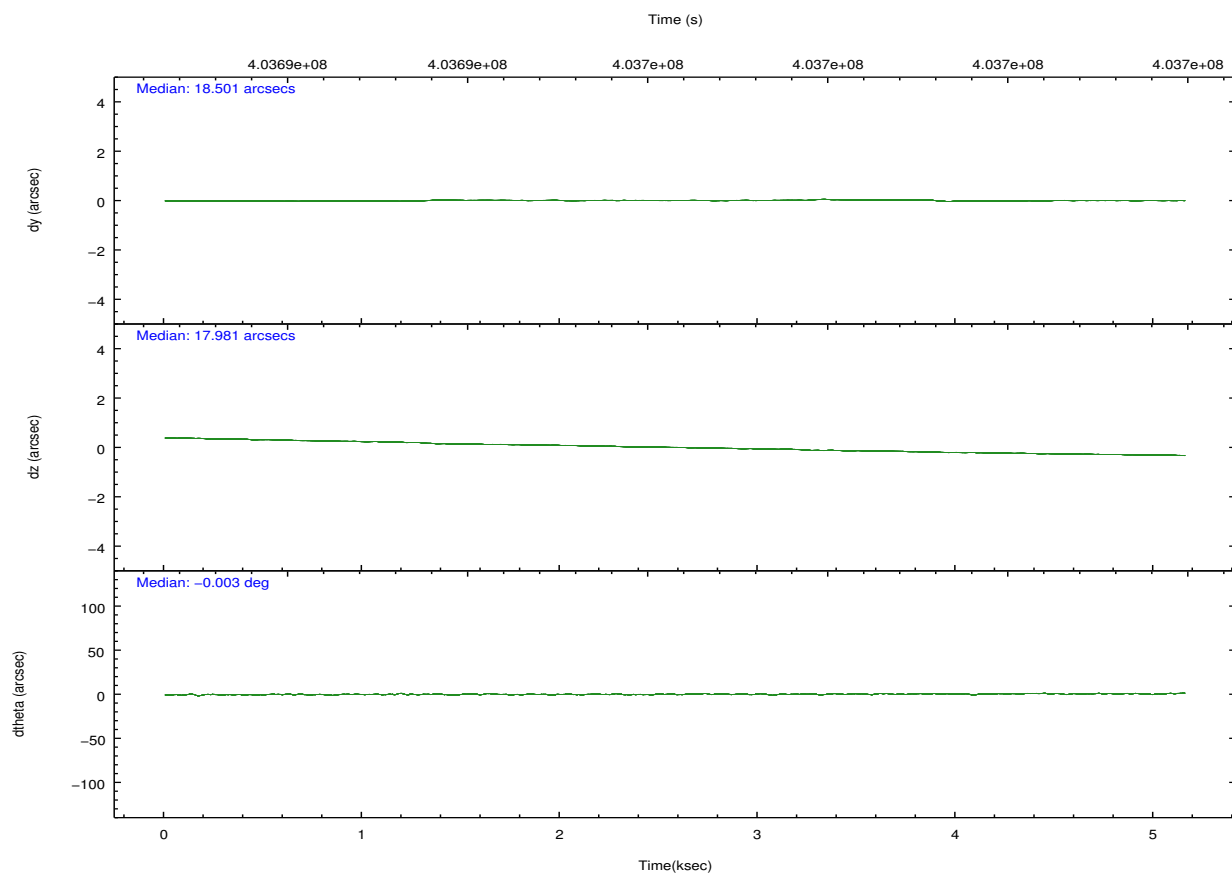
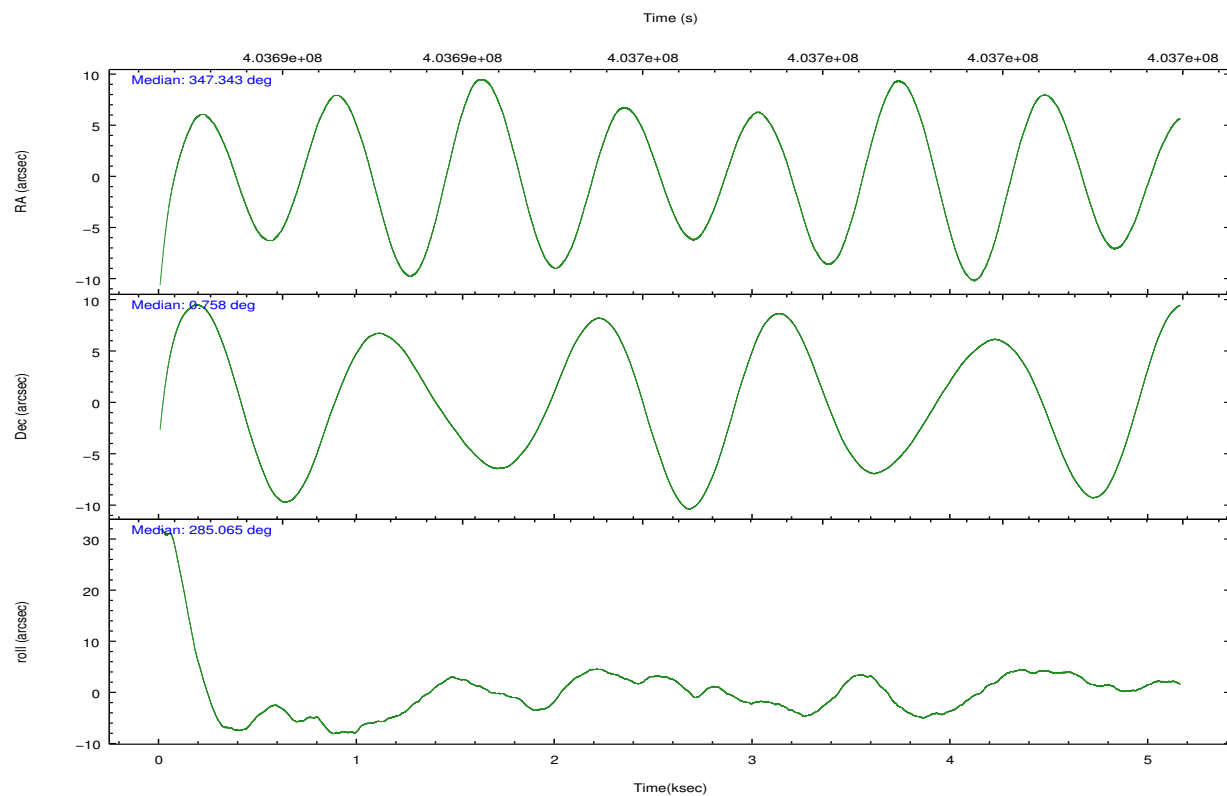
	ccd 0	ccd 1	ccd 2	ccd 3	ccd 6	ccd 7		ccd 0	ccd 1	ccd 2	ccd 3	ccd 6	ccd 7
level 1 events	33925	32387	35245	33216	37106	42896	grade 0 events	1299	1562	1304	1291	1403	1812
rejected events	30166	28163	31658	29634	33120	23490		3%	4%	3%	3%	3%	4%
rejected %	88%	86%	89%	89%	89%	54%	grade 1 events	28	16	20	20	23	69
								0%	0%	0%	0%	0%	0%
							grade 2 events	936	986	859	743	867	4008
								2%	3%	2%	2%	2%	9%
							grade 3 events	417	408	381	416	405	1732
								1%	1%	1%	1%	1%	4%
							grade 4 events	391	443	394	377	427	1723
								1%	1%	1%	1%	1%	4%
							grade 5 events	1434	1487	1260	1557	1596	4470
								4%	4%	3%	4%	4%	10%
							grade 6 events	720	830	652	758	885	10145
								2%	2%	1%	2%	2%	23%
							grade 7 events	28700	26655	30375	28054	31500	18937
								84%	82%	86%	84%	84%	44%

2.2 Compared Parameters

Parameter	Planned	Actual	Parameter	Planned	Actual
Instrument	ACIS	ACIS	Obspar format version number	7	7
Detector	ACIS-012367	ACIS-012367	Obspar file type	PREDICTED	ACTUAL
Grating	NONE	NONE	Obspar update status	NONE	UPDATED
Data mode	FAINT	FAINT	Number of optional ACIS chips dropped	0	0
Observation mode	POINTING	POINTING	On-chip summing requested	N	N
[deg] Pointing RA	347.323489	347.3431593289675	Subarray requested	NONE	NONE
[deg] Pointing Dec	0.776833	0.7578494232475157	Alternating exposures requested	N	N
[deg] Pointing Roll	284.917267	285.0736483012887	[s] Primary exposure time	0.000000	3.2
[mm] SIM focus pos	-0.684267	-0.6828225247311905			
[mm] SIM defocus	0	0.001444936568705701			
[mm] SIM translation stage pos	-190.132523	-190.1425803651734			
[mm] SIM translation stage offset	0	0.01005778216563158			
[s] Observation start time (MET)	403692740.184000	403691456.82324			
Observation start date	2010-10-17T08:51:14	2010-10-17T08:30:56			
[s] Observation end time (MET)	403697740.184000	403697965.57358			
Observation end date	2010-10-17T10:14:34	2010-10-17T10:19:25			
Read mode	TIMED	TIMED			

2.3 Aspect



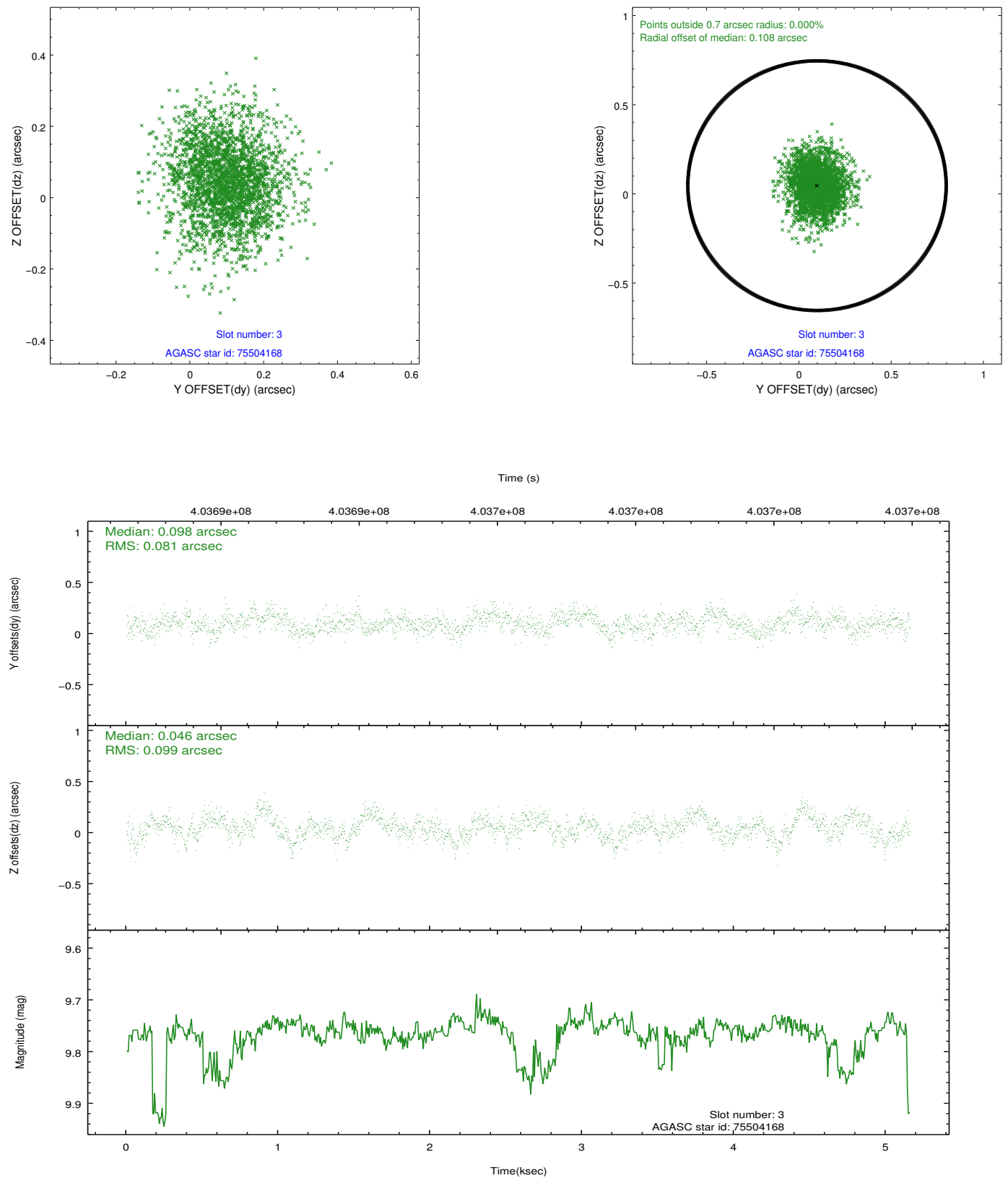


Slot Statistics

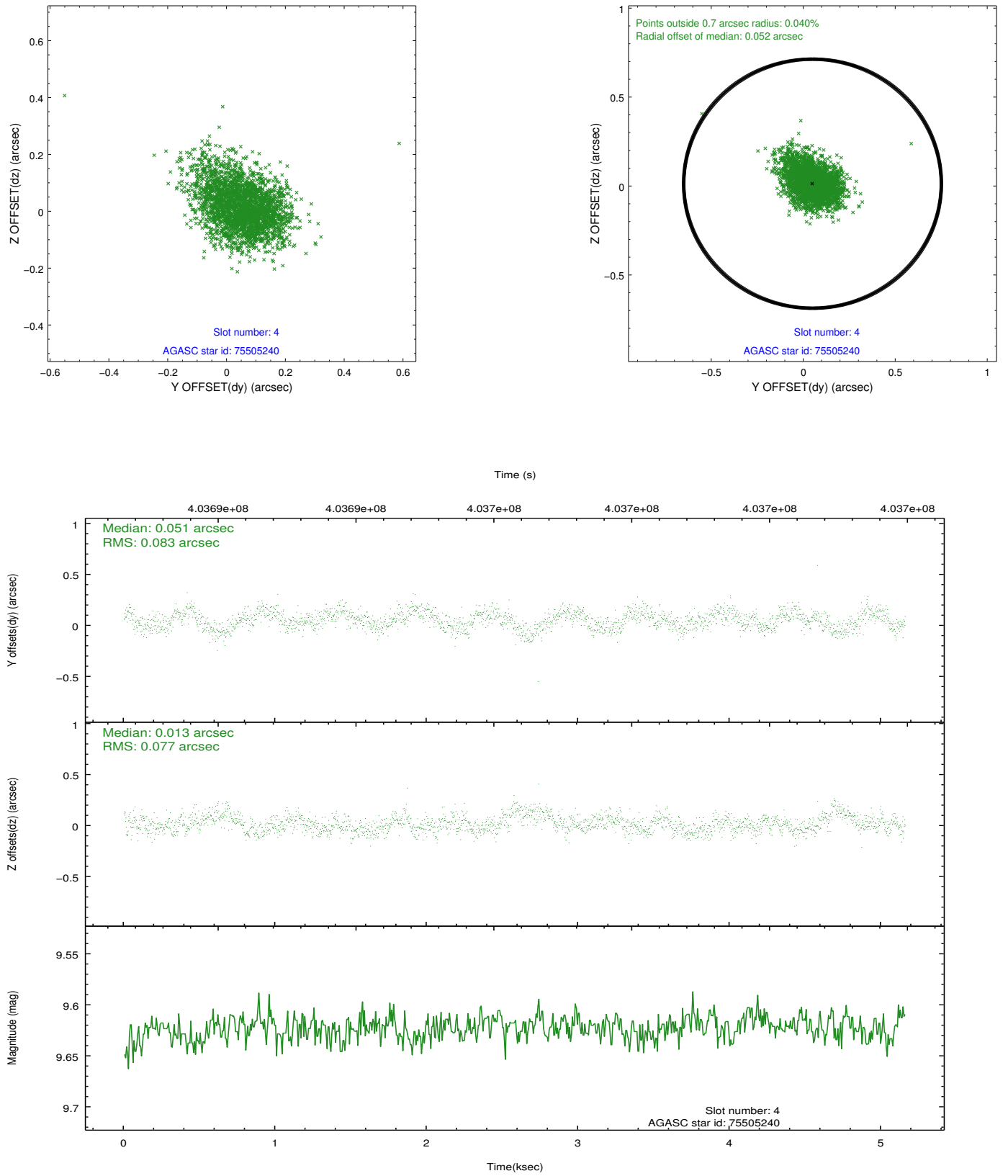
slot	status	id	mag	n_pts	med_dy	med_dz	dr1	dr2	ra	dec	mean_y	mean_z
0	FID	ACIS-S-2	6.92	1258	-0.060	-0.044	0.008	0.012	0.000000	0.000000	-771.66	-1739.42
1	FID	ACIS-S-4	7.00	1257	0.199	0.041	0.006	0.010	0.000000	0.000000	2141.37	167.86
2	FID	ACIS-S-5	7.03	1258	-0.170	0.011	0.006	0.010	0.000000	0.000000	-1823.07	162.93
3	GUIDE	75504168	9.76	2506	0.098	0.046	0.136	0.222	347.347781	0.457789	1133.26	-211.29
4	GUIDE	75505240	9.62	2511	0.051	0.013	0.117	0.196	347.227385	0.564421	651.41	-531.24
5	GUIDE	75630320	8.94	2515	-0.003	-0.175	0.097	0.156	347.710960	0.409726	1639.46	1006.44
6	GUIDE	75630768	10.38	2465	-0.073	-0.106	0.177	0.283	347.761304	1.314642	-1464.71	2021.21
7	GUIDE	75505664	9.79	2510	-0.073	0.225	0.140	0.237	346.681479	0.560498	157.66	-2432.72

2.4 Star Slots

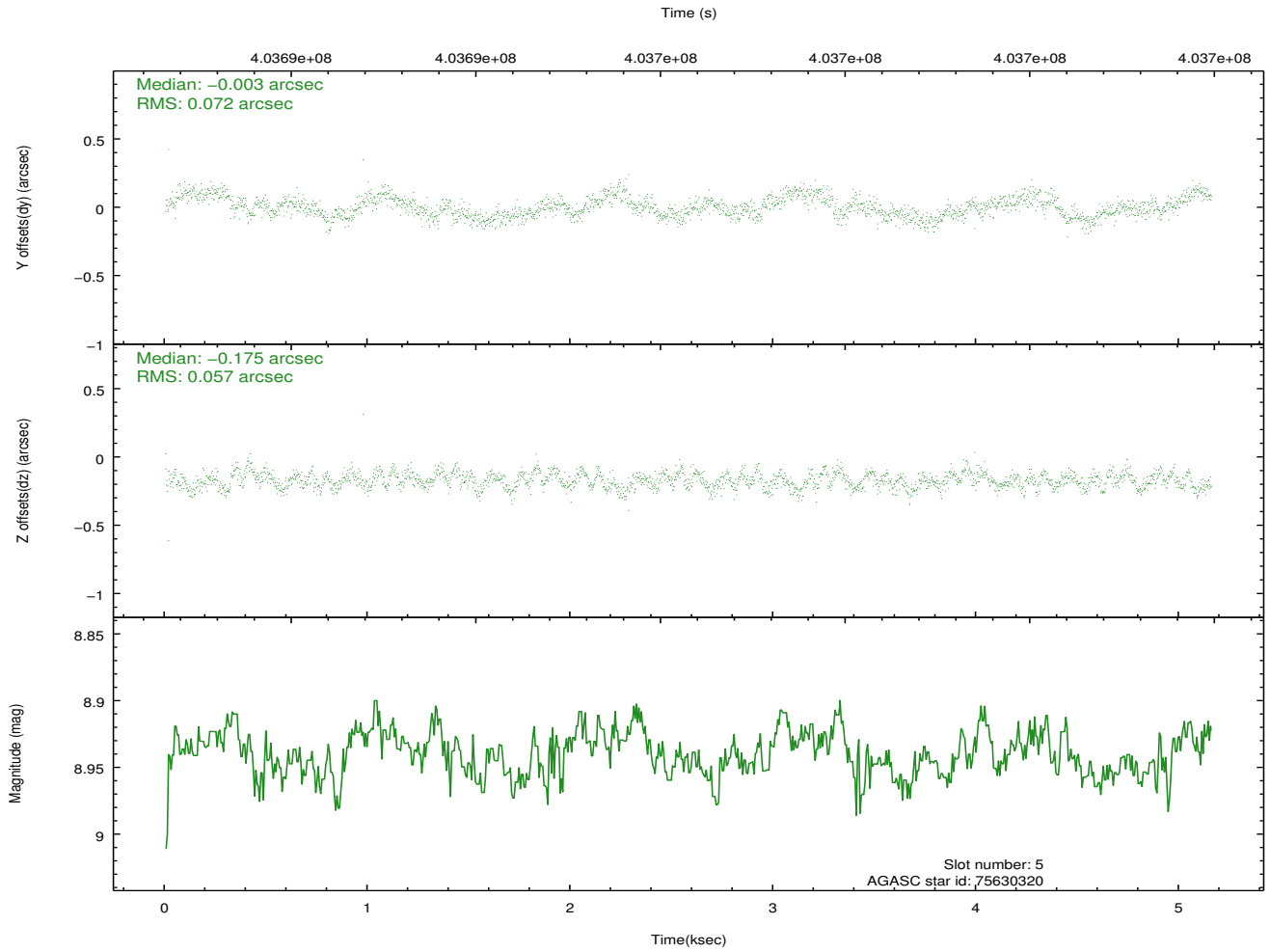
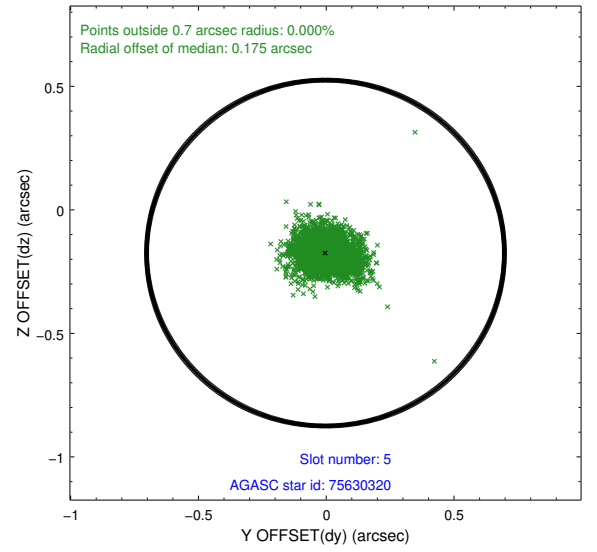
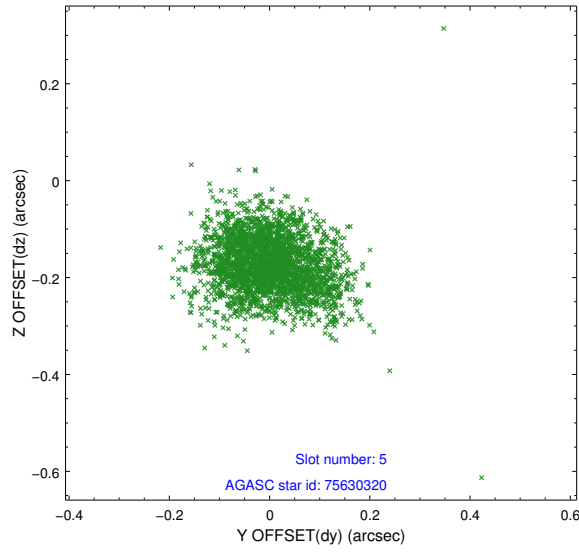
2.4.1 Slot 3



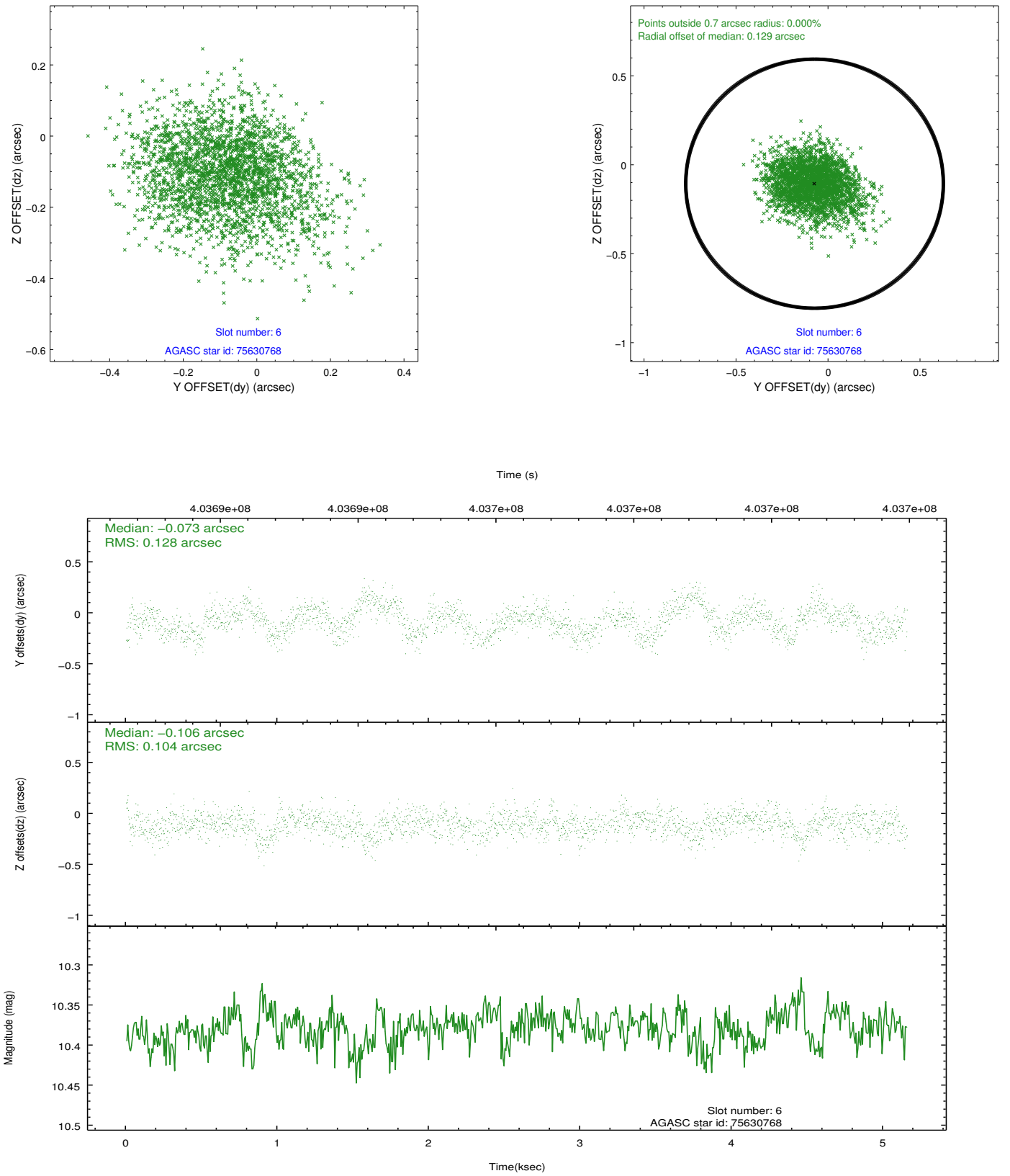
2.4.2 Slot 4



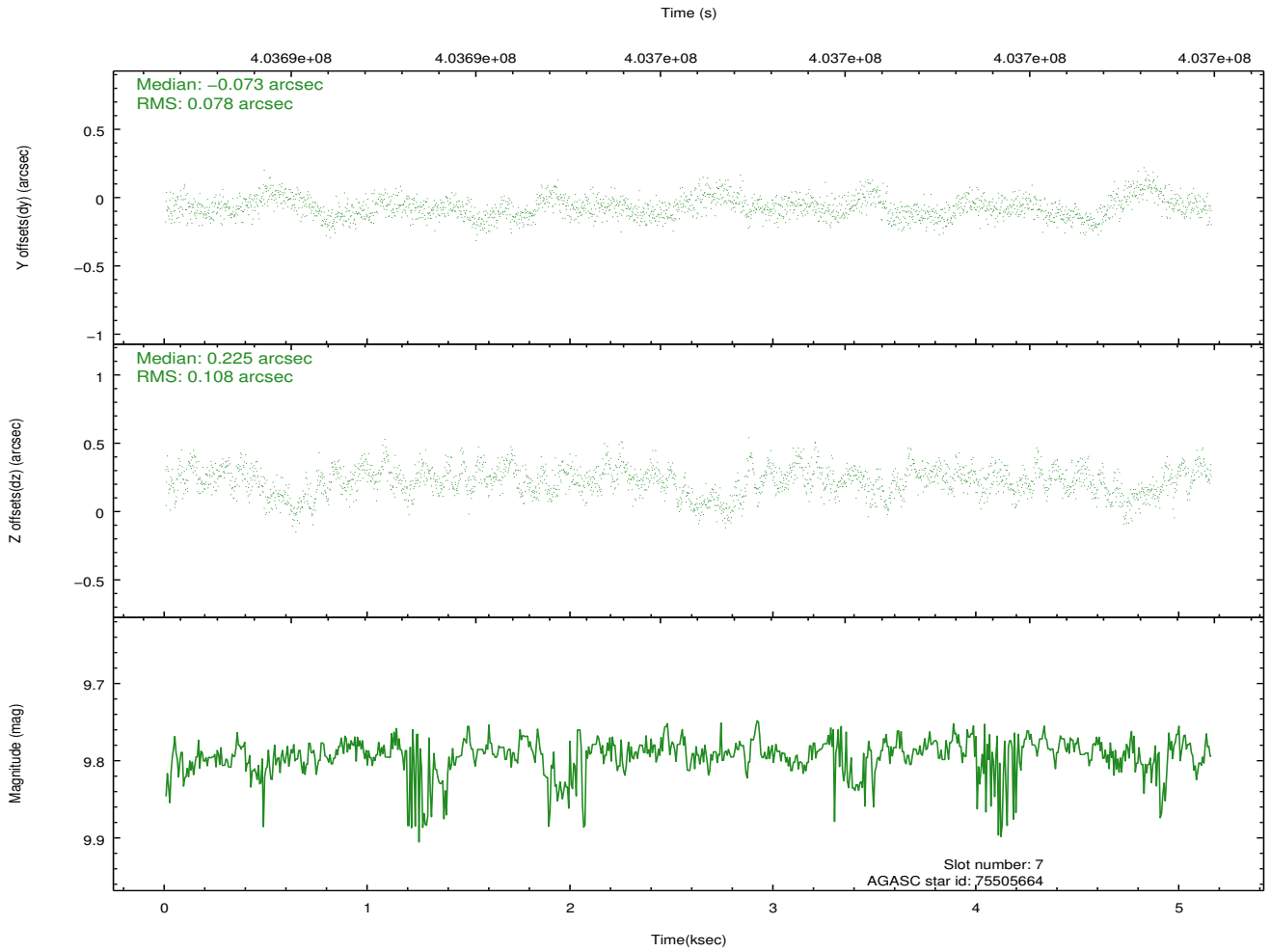
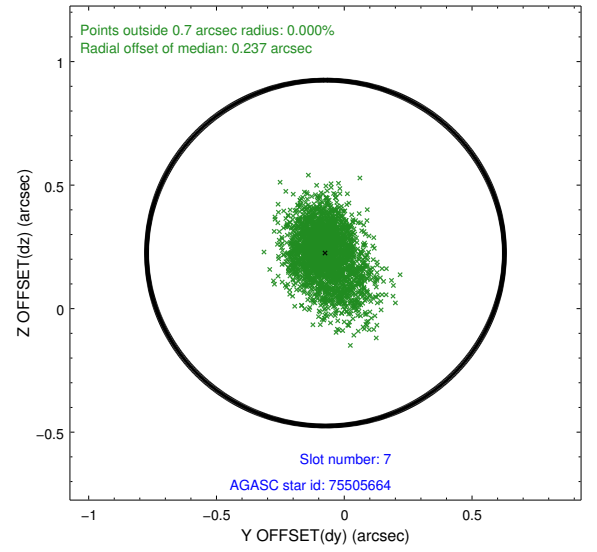
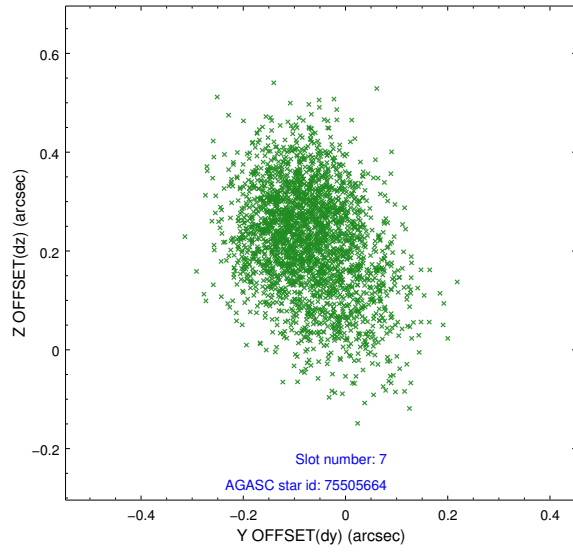
2.4.3 Slot 5



2.4.4 Slot 6

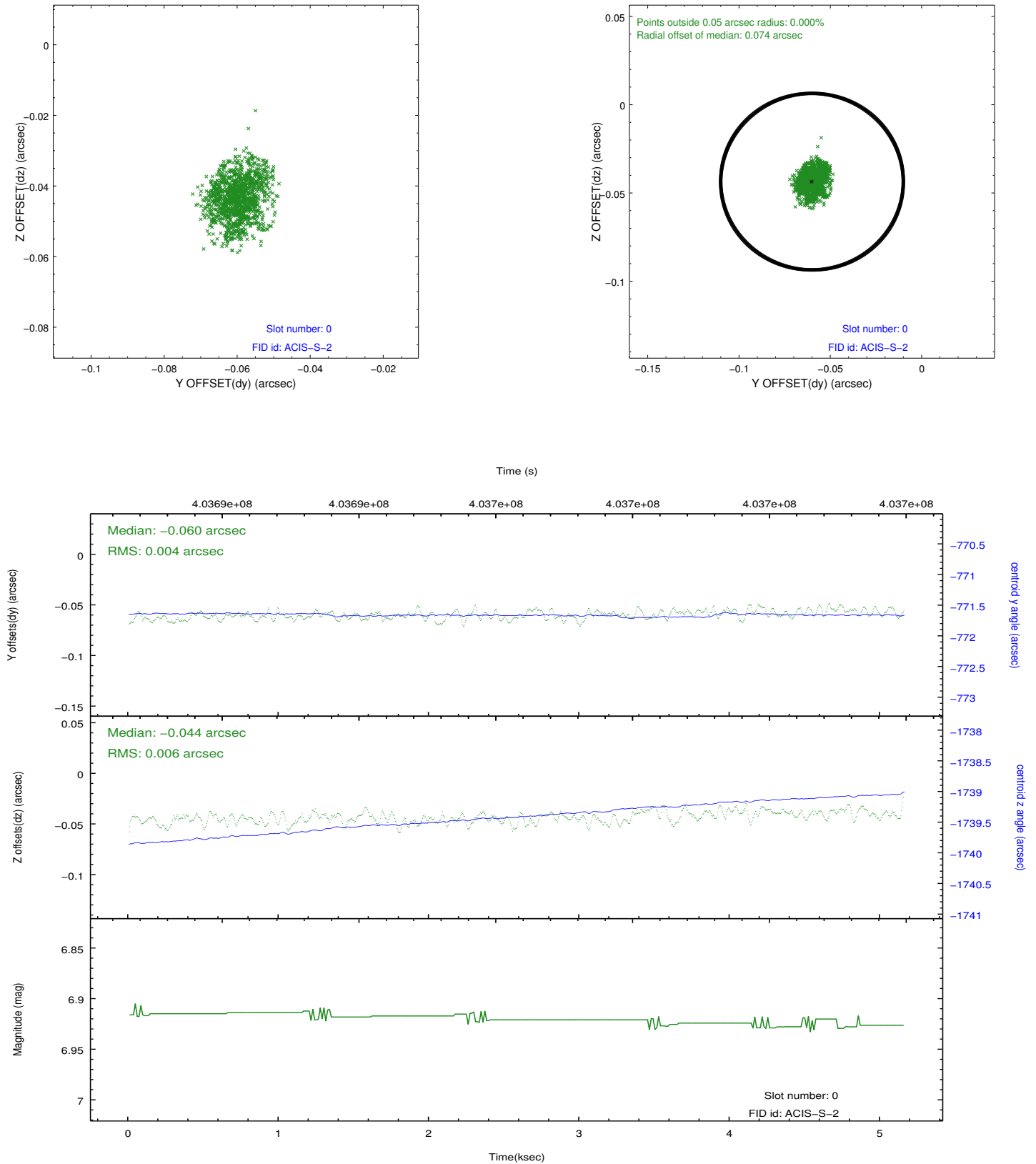


2.4.5 Slot 7

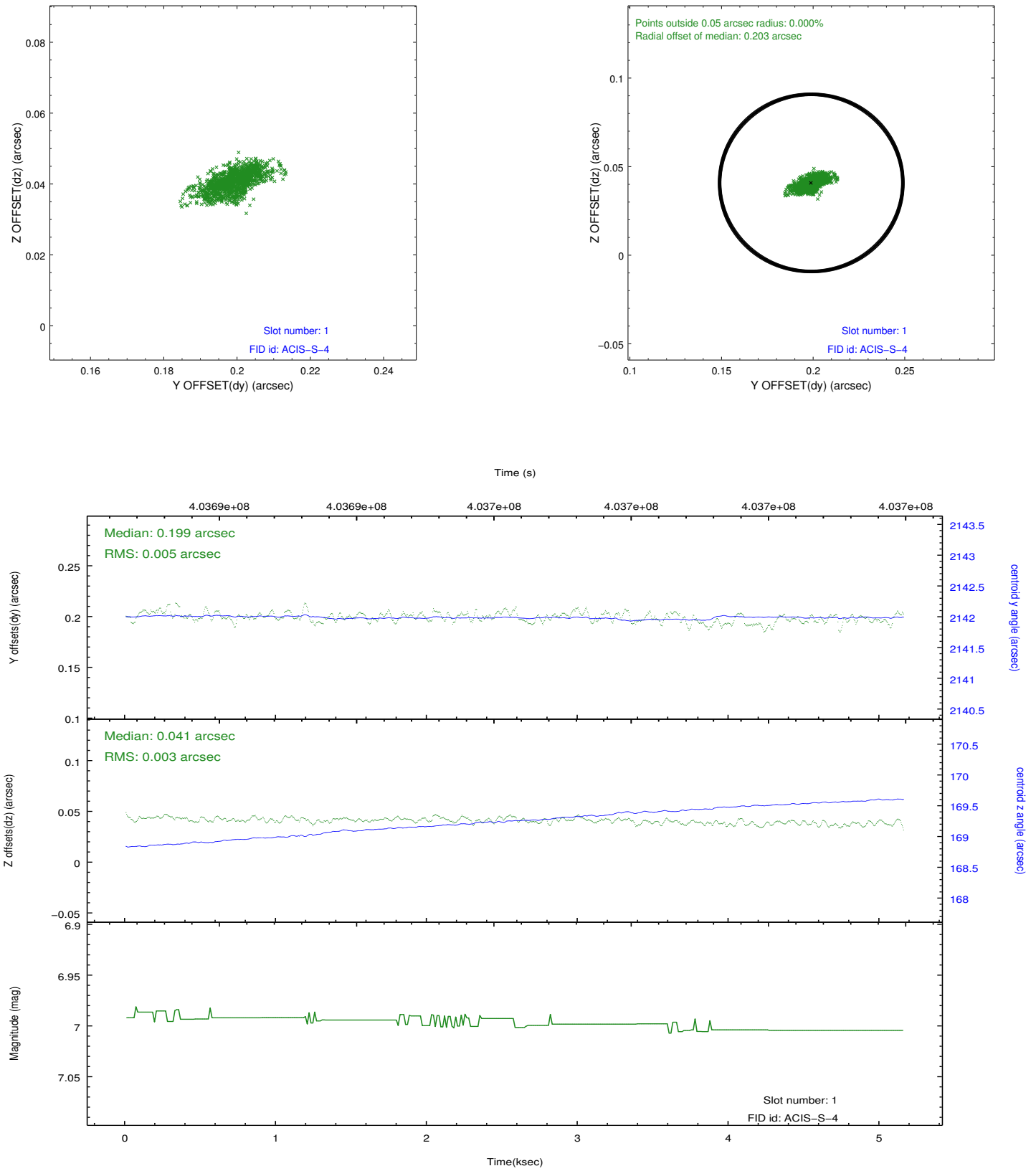


2.5 FID Slots

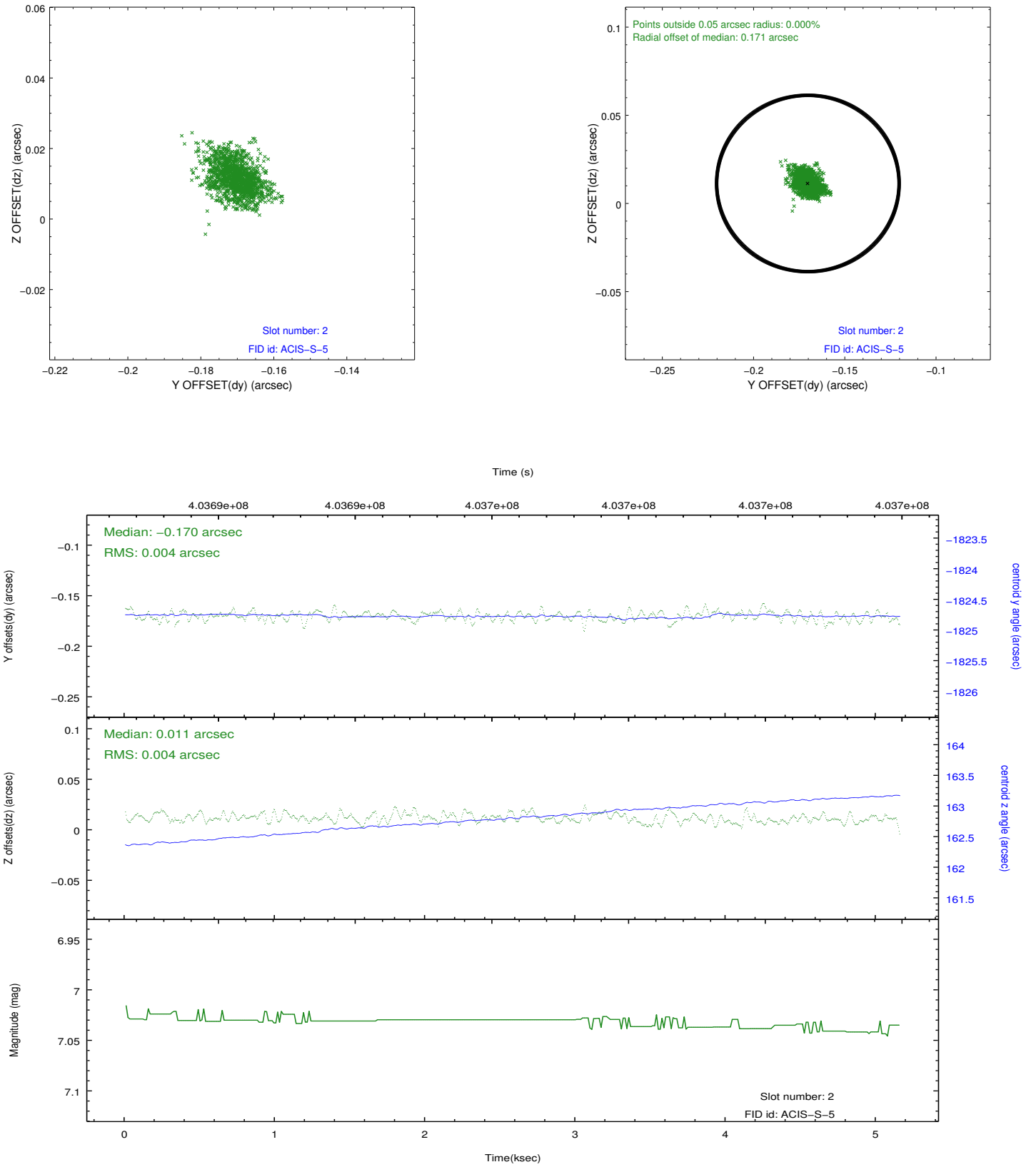
2.5.1 Slot 0



2.5.2 Slot 1



2.5.3 Slot 2



A Summary

A.1 Status

V&V Scientist	Jen Lauer
V&V Date (YYYY-MM-DD)	2012.07.13
V&V Edition	1
V&V Disposition and Status	OK
V&V Charge Time	4.751999982357

A.2 Comments