

# V&V Reference Report

## L2 ASCDS Version : 8.4.4

Observation 10518 - L2 Version 2  
Chandra X-Ray Center

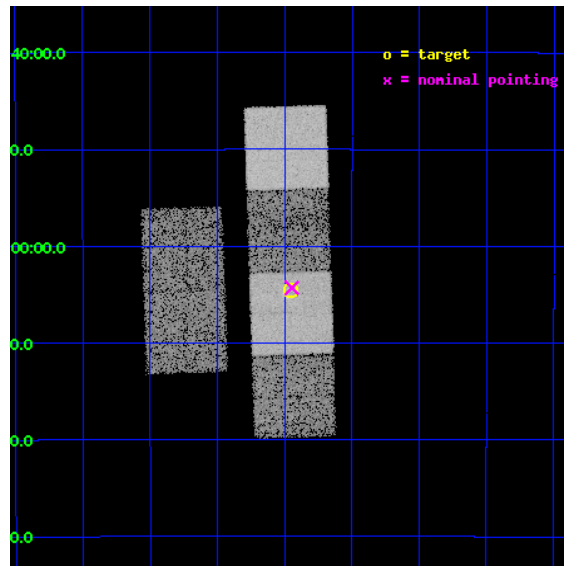
L2 Processing Date : Jun 1 2012

## Contents

<b>1</b>	<b>Front</b>	<b>2</b>
<b>2</b>	<b>OBI</b>	<b>3</b>
2.1	OBI . . . . .	3
2.1.1	Images . . . . .	3
2.1.2	Bias . . . . .	3
2.1.3	Parameters . . . . .	4
2.1.4	Events . . . . .	4
2.2	Compared Parameters . . . . .	5
2.3	Aspect . . . . .	6
2.4	Star Slots . . . . .	9
2.4.1	Slot 3 . . . . .	9
2.4.2	Slot 4 . . . . .	10
2.4.3	Slot 5 . . . . .	11
2.4.4	Slot 6 . . . . .	12
2.4.5	Slot 7 . . . . .	13
2.5	FID Slots . . . . .	14
2.5.1	Slot 0 . . . . .	14
2.5.2	Slot 1 . . . . .	15
2.5.3	Slot 2 . . . . .	16
<b>A</b>	<b>Summary</b>	<b>17</b>
A.1	Status . . . . .	17
A.2	Comments . . . . .	17

# 1 Front

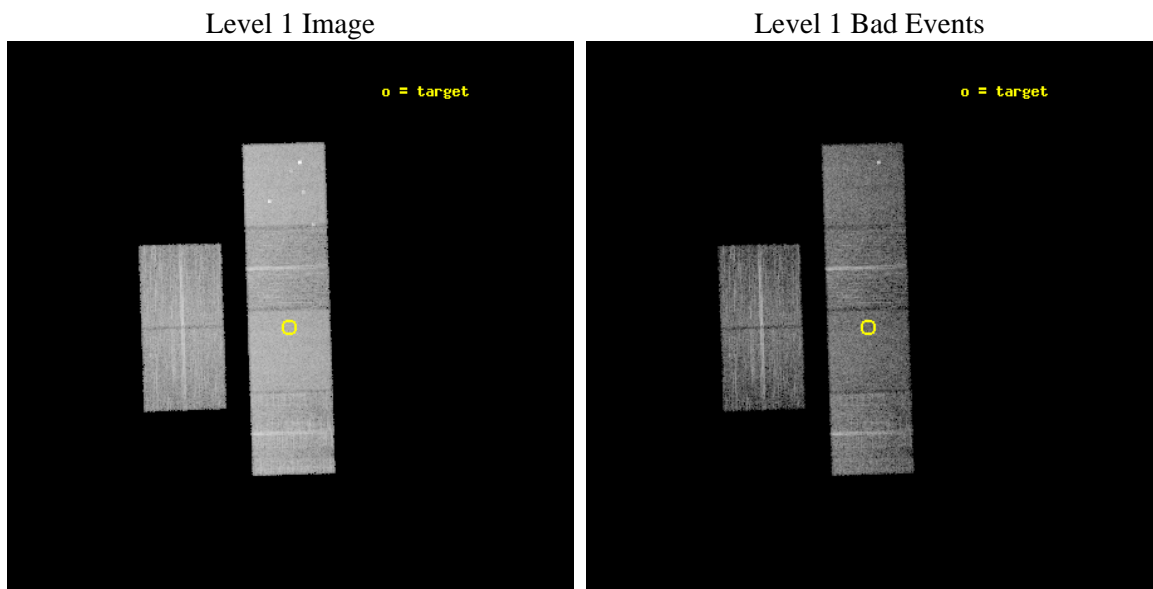
seq_num	900886	Sequence number
obs_id	10518	Observation id
title	ChIcAGO: Chandra Identification of ASCA Galactic Objects	Proposal
observer	Prof. Bryan Gaensler	Principal investigator
object	AX J180857-2004	Source name
dtcycle	0	&#160
cycle	P	events from which exps? Prim/Second/Both
ra_targ	272.239167	Observer's specified target RA [deg]
dec_targ	-20.076	Observer's specified target Dec [deg]
ra_nom	272.23664326267	Nominal RA [deg]
dec_nom	-20.071787614494	Nominal Dec [deg]
roll_nom	88.152524499432	Nominal Roll [deg]
revision	2	Processing version of data
ontime	6550.3999756575	Sum of GTIs [s]
livetime	6467.4548669884	Livetime [s]
ontime2	6550.3999756575	Sum of GTIs [s]
ontime3	6550.3383726478	Sum of GTIs [s]
ontime5	6550.3999756575	Sum of GTIs [s]
ontime6	6543.8975517154	Sum of GTIs [s]
ontime7	6550.3999756575	Sum of GTIs [s]
ontime8	6550.2973326445	Sum of GTIs [s]
l2events	116567	Number of level 2 events



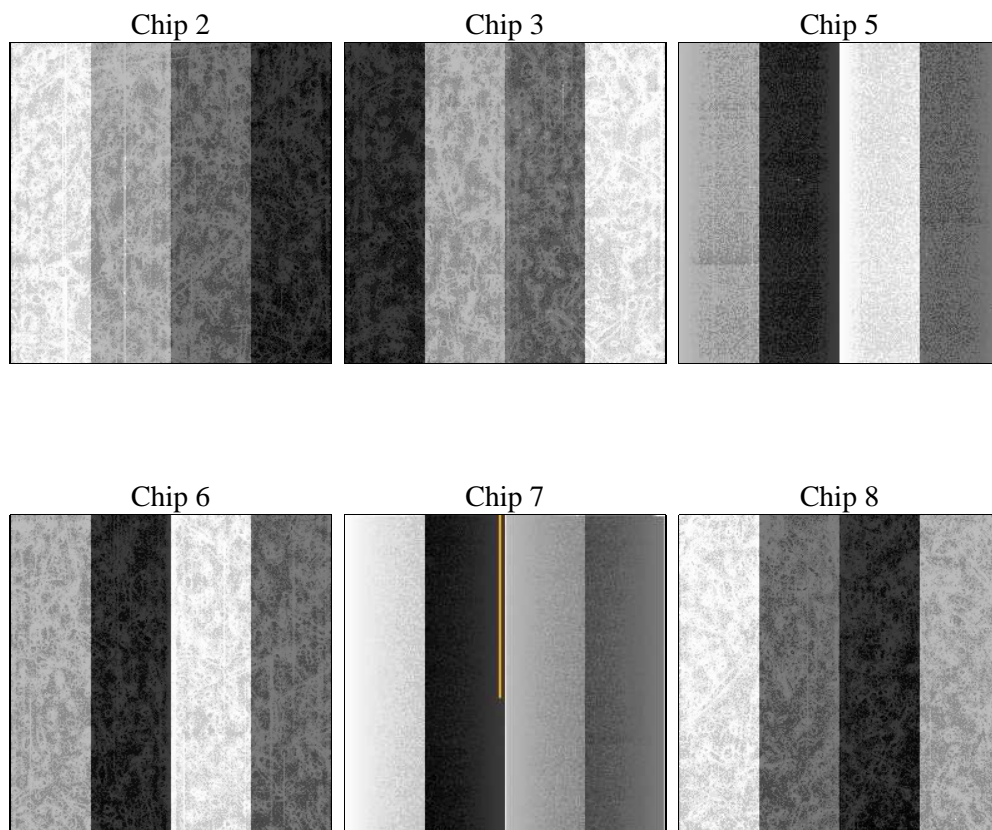
## 2 OBI

### 2.1 OBI

#### 2.1.1 Images



#### 2.1.2 Bias



### 2.1.3 Parameters

obi_num	0	Obi number	sched_exp_time	6600.000000	[s] Scheduled observation exposure time
ascdsver	8.4.4	Processing system revision	ontime	6550.3999756575	Sum of GTIs [s]
caldbver	4.4.9	&#160	ontime2	6550.3999756575	Sum of GTIs [s]
date	2012-06-01T10:09:21	Date and time of file creation	ontime3	6550.3383726478	Sum of GTIs [s]
revision	2	Processing version of data	ontime5	6550.3999756575	Sum of GTIs [s]
			ontime6	6543.8975517154	Sum of GTIs [s]
			ontime7	6550.3999756575	Sum of GTIs [s]
			ontime8	6550.2973326445	Sum of GTIs [s]
			l1events	491210	Number of level 1 events

### 2.1.4 Events

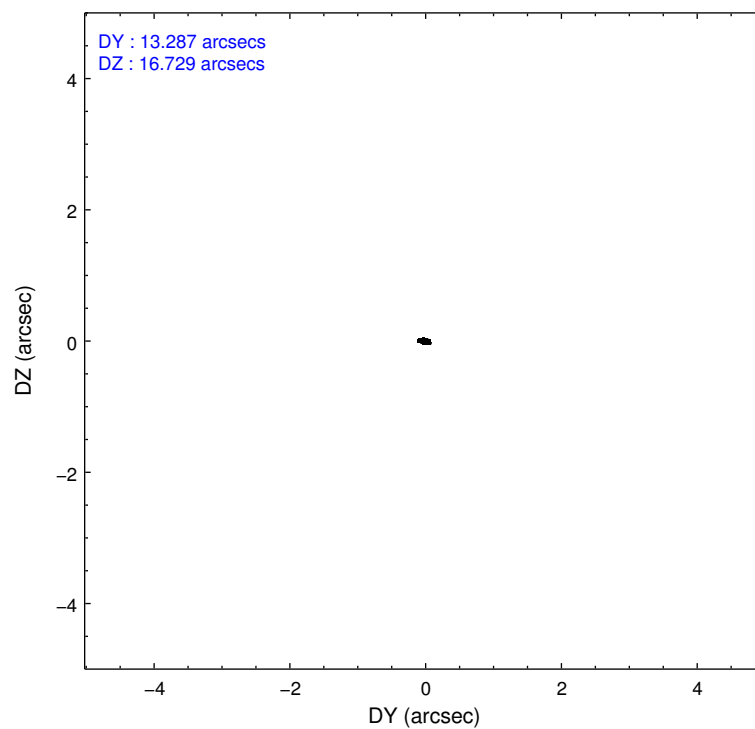
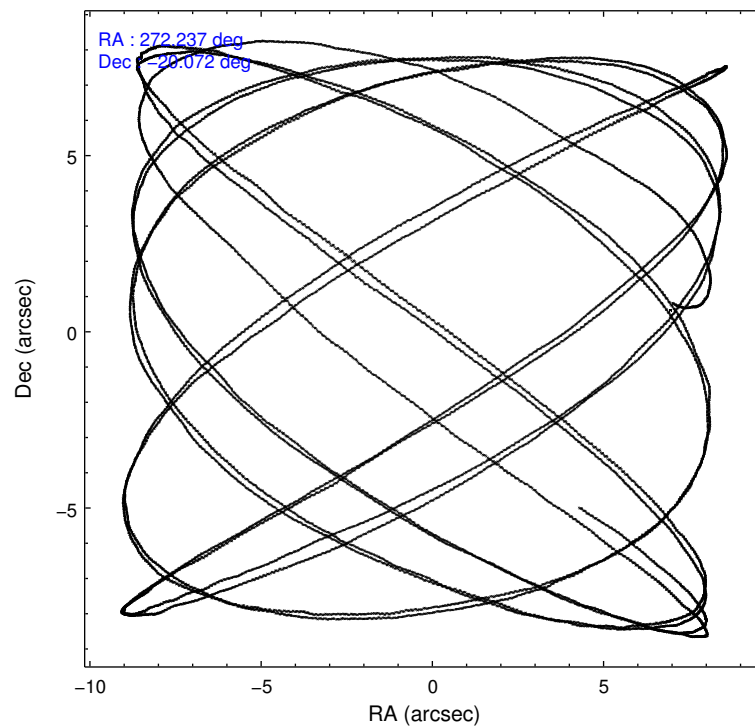
	ccd 2	ccd 3	ccd 5	ccd 6	ccd 7	ccd 8		ccd 2	ccd 3	ccd 5	ccd 6	ccd 7	ccd 8
level 1 events	69275	63370	108199	67617	95584	87165	grade 0 events	3782	3681	4867	3391	3372	6510
rejected events	60711	55040	57634	59193	55353	66688		5%	5%	4%	5%	3%	7%
rejected %	87%	86%	53%	87%	57%	76%	grade 1 events	66	49	755	44	111	59
								0%	0%	0%	0%	0%	0%
							grade 2 events	1812	1578	16002	1828	8401	4615
								2%	2%	14%	2%	8%	5%
							grade 3 events	773	819	1744	741	3498	2073
								1%	1%	1%	1%	3%	2%
							grade 4 events	767	780	1715	763	3364	1975
								1%	1%	1%	1%	3%	2%
							grade 5 events	2783	3178	7491	3282	8948	4373
								4%	5%	6%	4%	9%	5%
							grade 6 events	1435	1475	26297	1710	21634	5312
								2%	2%	24%	2%	22%	6%
							grade 7 events	57857	51810	49328	55858	46256	62248
								83%	81%	45%	82%	48%	71%

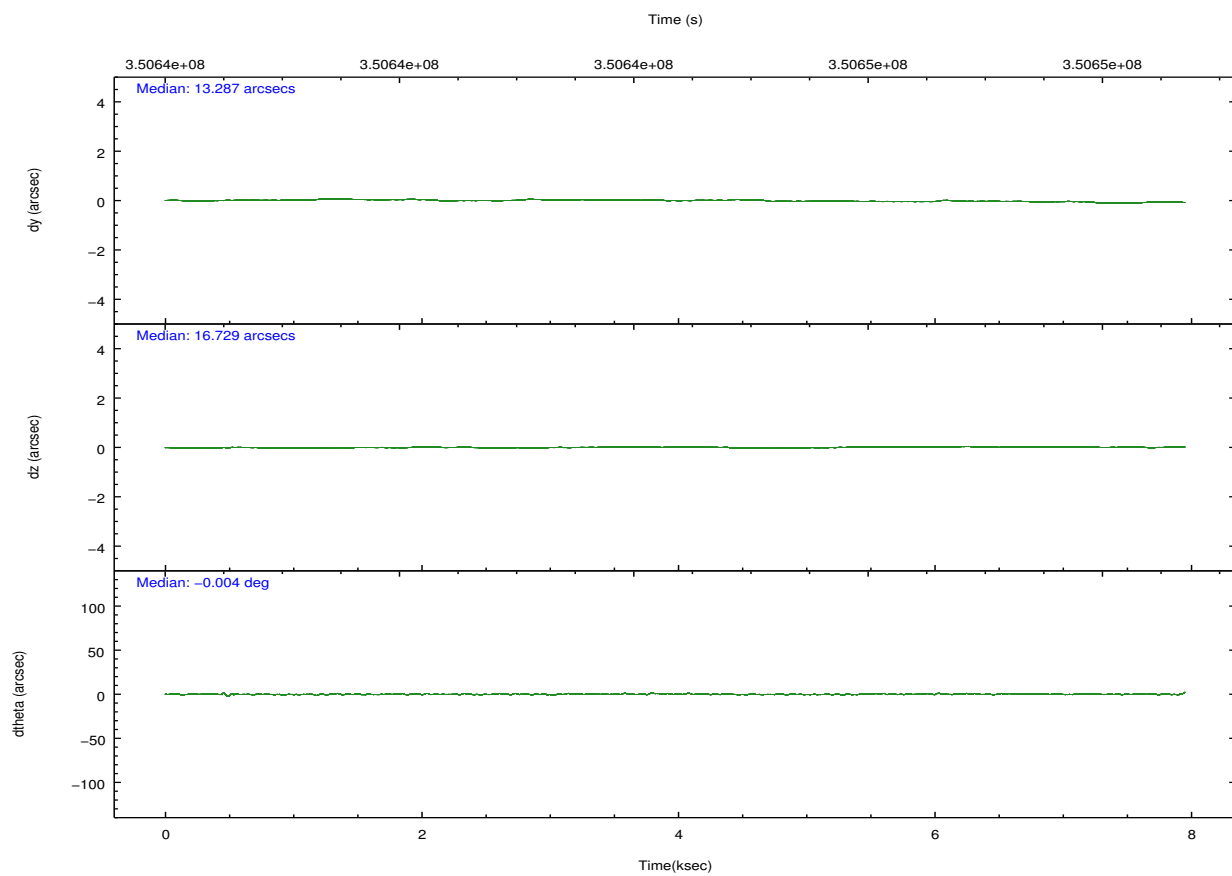
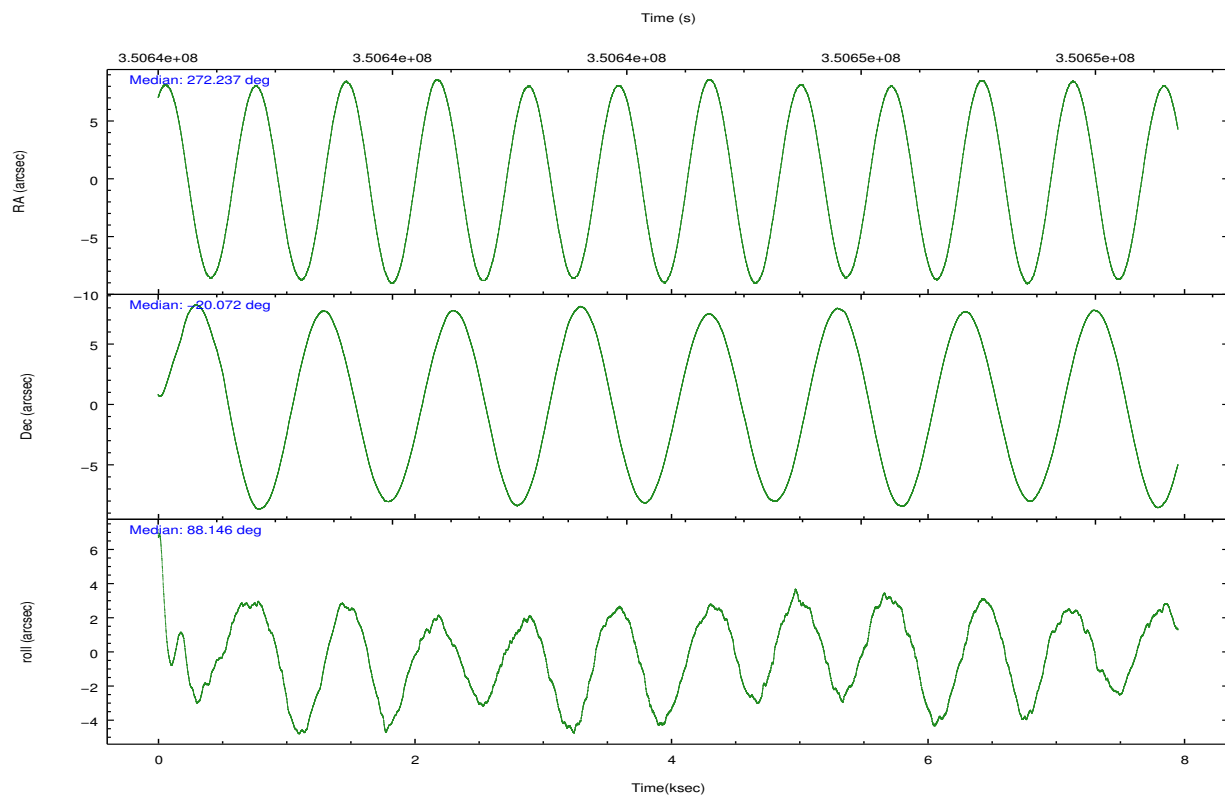


## 2.2 Compared Parameters

Parameter	Planned	Actual	Parameter	Planned	Actual
Instrument	ACIS	ACIS	Obspar format version number	7	7
Detector	ACIS-235678	ACIS-235678	Obspar file type	PREDICTED	ACTUAL
Grating	NONE	NONE	Obspar update status	NONE	UPDATED
Data mode	FAINT	FAINT	CCD I0 on	N	N
Observation mode	POINTING	POINTING	CCD I1 on	N	N
[deg] Pointing RA	272.250678	272.2366432626738	CCD I2 on	O2	Y
[deg] Pointing Dec	-20.095724	-20.07178761449402	CCD I3 on	O3	Y
[deg] Pointing Roll	88.000713	88.15252449943203	CCD S0 on	N	N
[mm] SIM focus pos	-0.684267	-0.6828225247311905	CCD S1 on	O1	Y
[mm] SIM defocus	0	0.001444936568705701	CCD S2 on	O5	Y
[mm] SIM translation stage pos	-190.132523	-190.1400660498719	CCD S3 on	Y	Y
[mm] SIM translation stage offset	0	0.00754346686406393	CCD S4 on	O4	Y
[s] Observation start time (MET)	350641732.184000	350640040.22023	CCD S5 on	N	N
Observation start date	2009-02-10T08:27:46	2009-02-10T08:00:40	Number of optional ACIS chips dropped	0	0
[s] Observation end time (MET)	350648332.184000	350648468.28315	On-chip summing requested	N	N
Observation end date	2009-02-10T10:17:46	2009-02-10T10:21:08	Subarray requested	NONE	NONE
Read mode	TIMED	TIMED	Alternating exposures requested	N	N
			[s] Primary exposure time	0.000000	3.2

## 2.3 Aspect



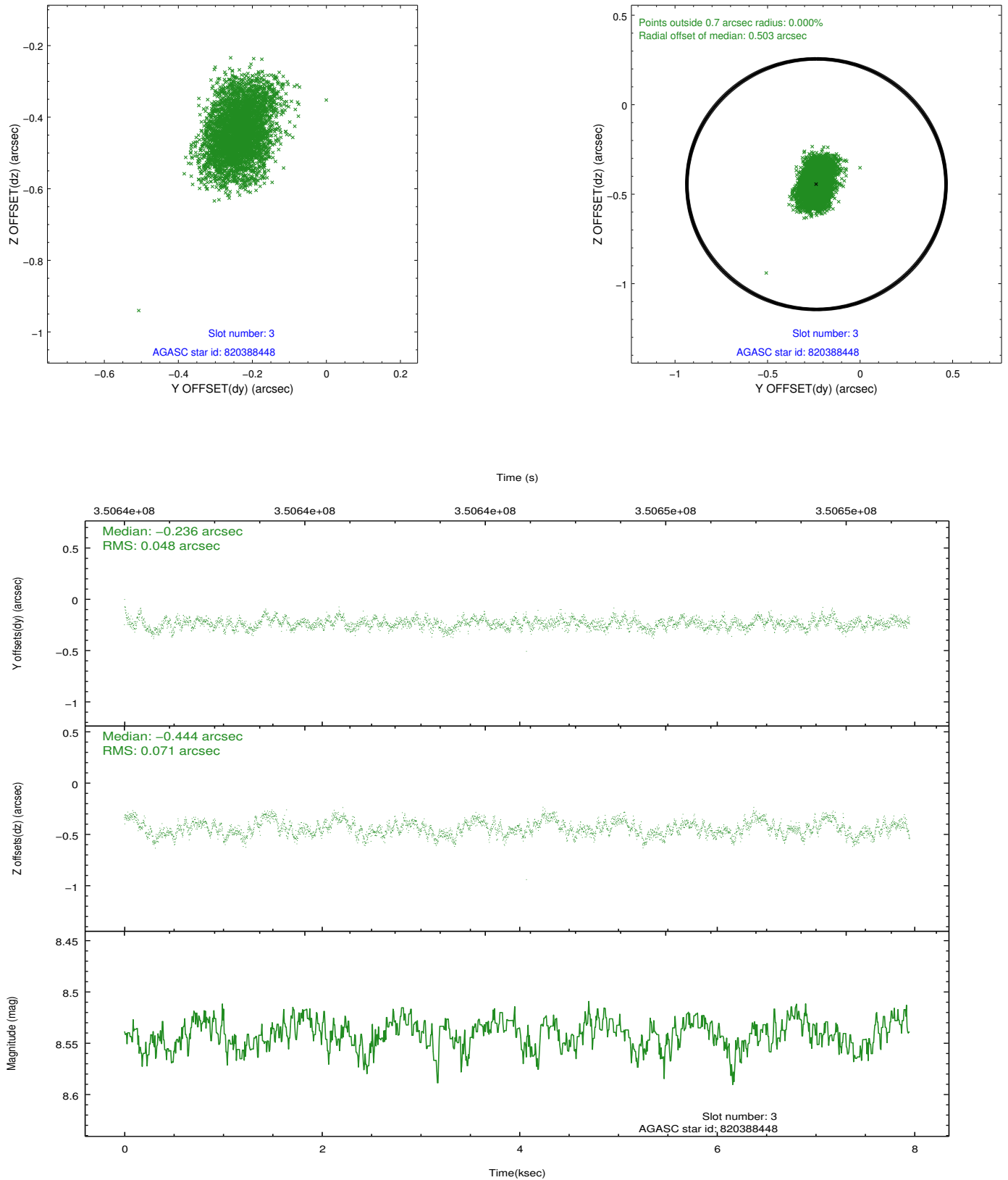


### Slot Statistics

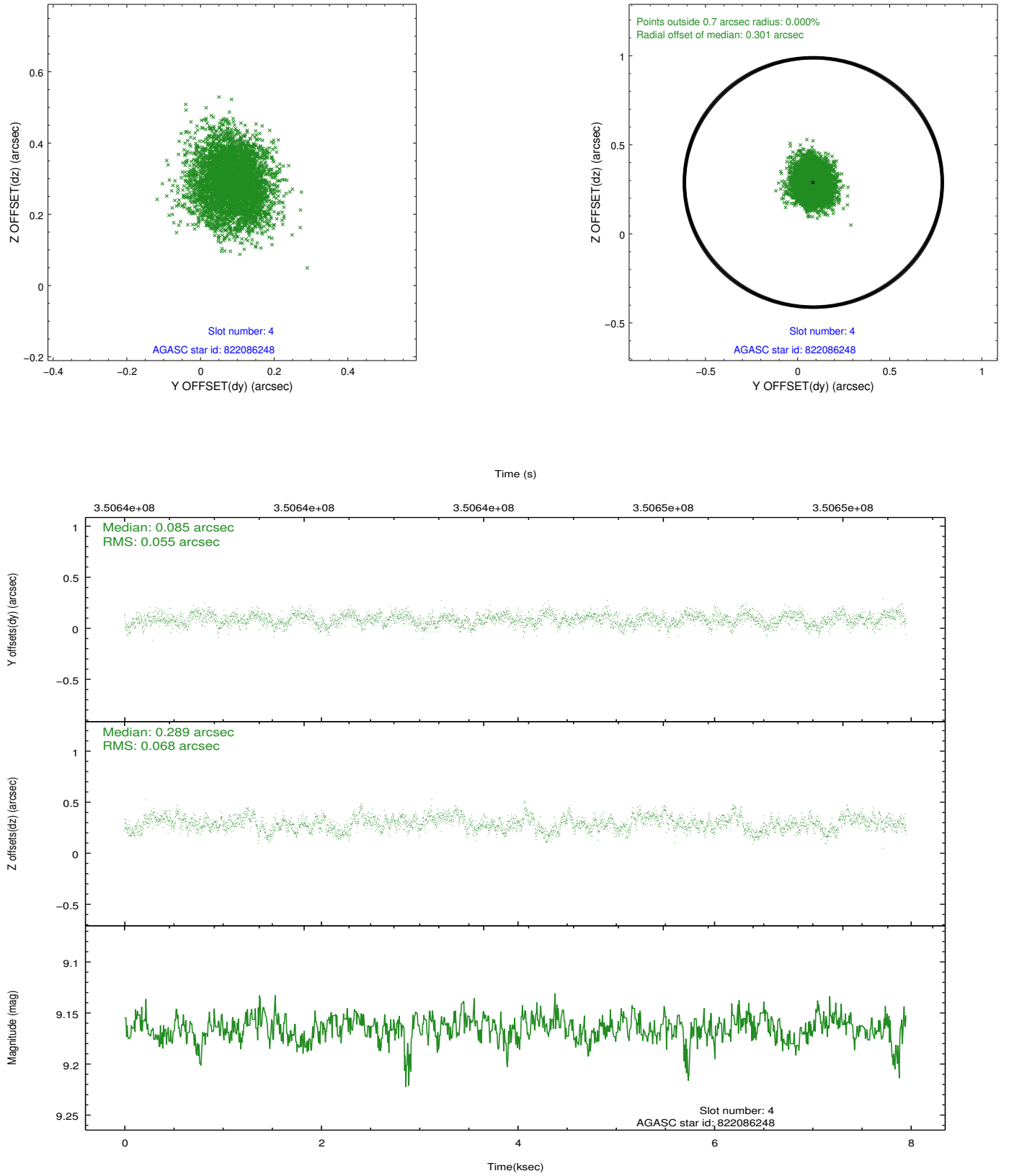
slot	status	id	mag	n_pts	med_dy	med_dz	dr1	dr2	ra	dec	mean_y	mean_z
0	FID	ACIS-S-2	6.88	1940	-0.025	-0.030	0.006	0.011	0.000000	0.000000	-766.24	-1738.18
1	FID	ACIS-S-4	6.96	1940	0.163	0.020	0.006	0.011	0.000000	0.000000	2146.91	169.60
2	FID	ACIS-S-5	6.99	1940	-0.169	0.018	0.006	0.011	0.000000	0.000000	-1818.31	164.10
3	GUIDE	820388448	8.54	3879	-0.236	-0.444	0.090	0.149	271.630569	-19.882892	688.43	2124.50
4	GUIDE	822086248	9.16	3879	0.085	0.289	0.094	0.148	272.549563	-20.462464	-1284.52	-1052.69
5	GUIDE	822100176	8.46	3879	0.090	-0.126	0.079	0.123	272.112888	-19.868886	799.65	494.64
6	GUIDE	822101176	9.08	3874	-0.001	0.128	0.088	0.140	272.316309	-19.723295	1348.17	-174.87
7	GUIDE	822102232	8.79	3878	0.067	0.148	0.079	0.130	272.350923	-20.034935	231.19	-330.86

## 2.4 Star Slots

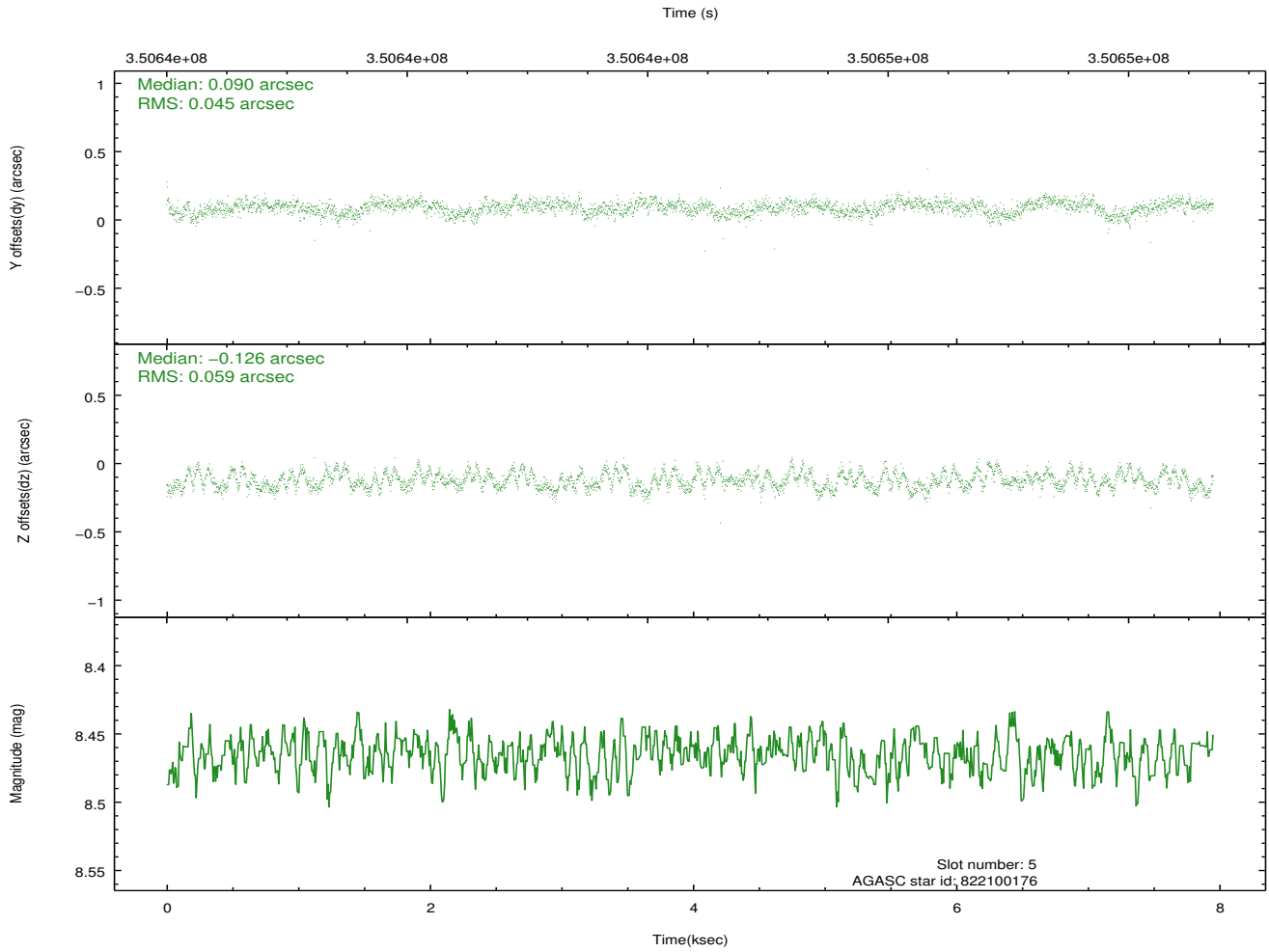
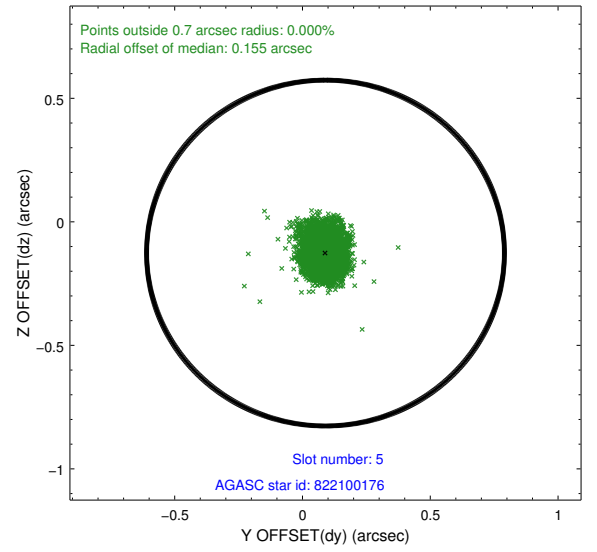
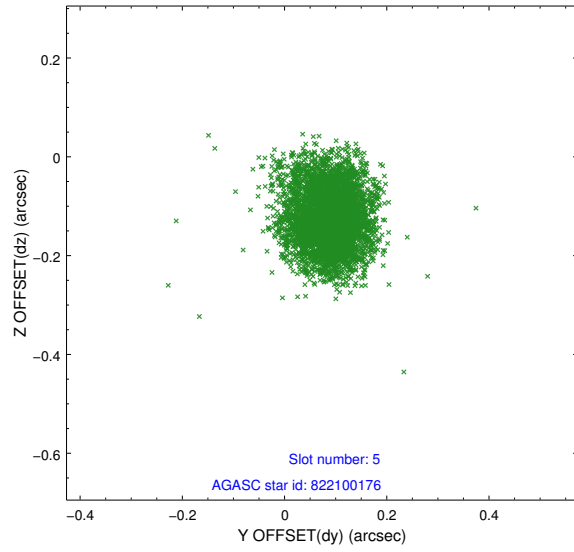
### 2.4.1 Slot 3



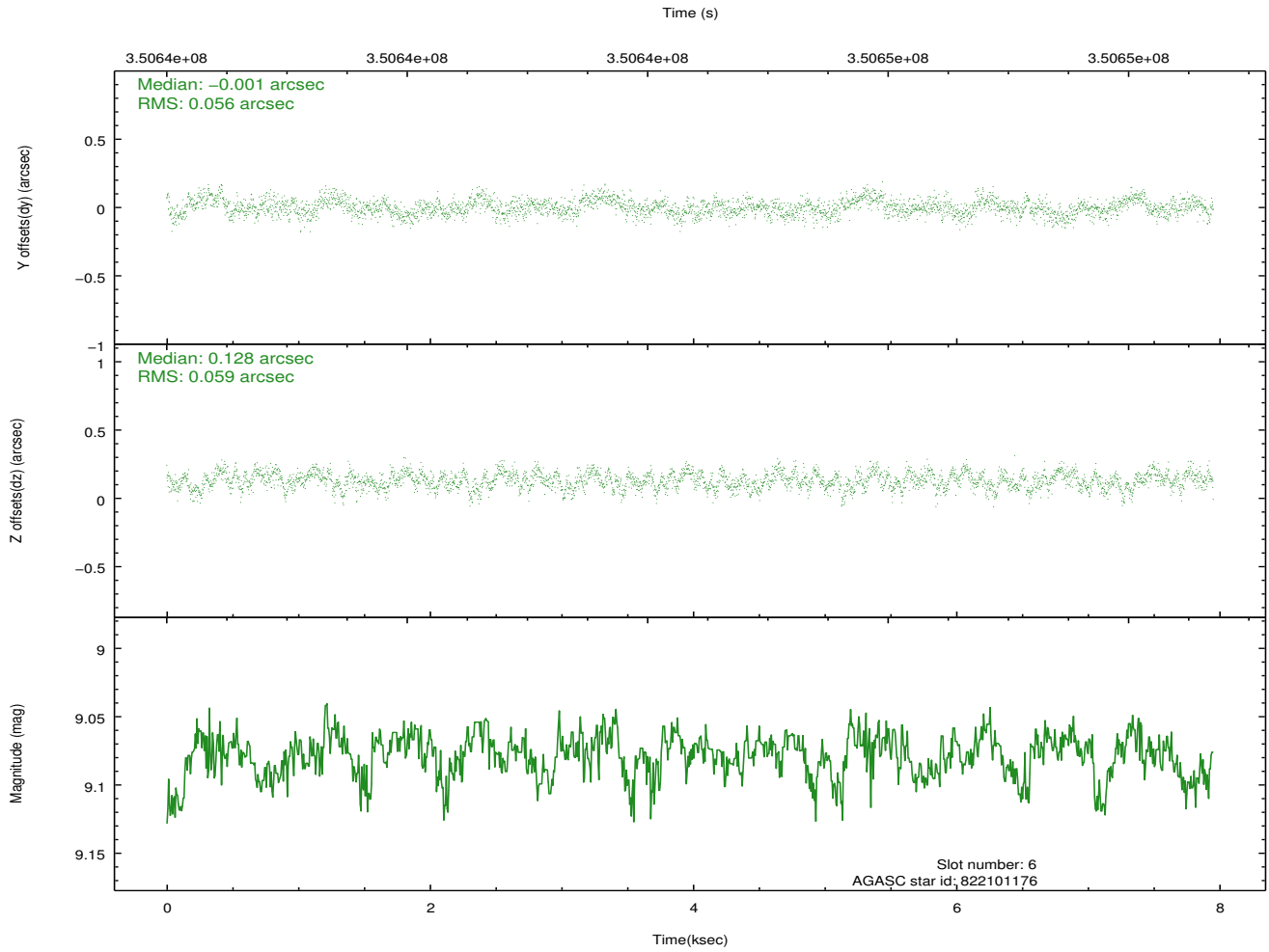
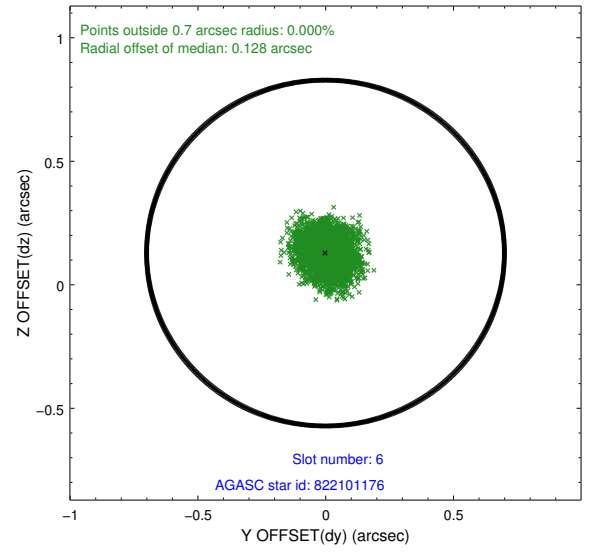
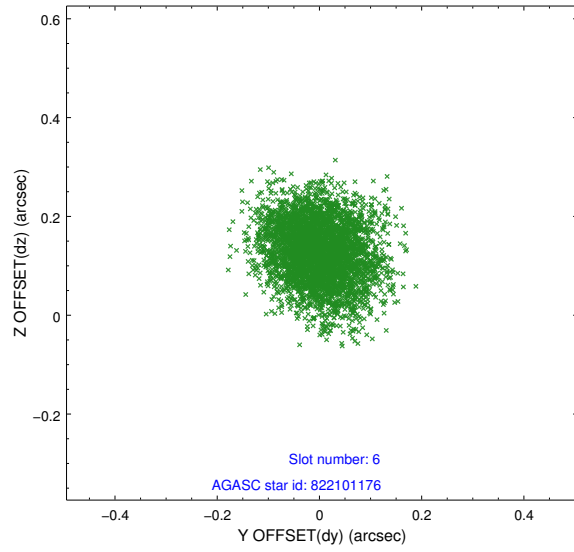
## 2.4.2 Slot 4



### 2.4.3 Slot 5

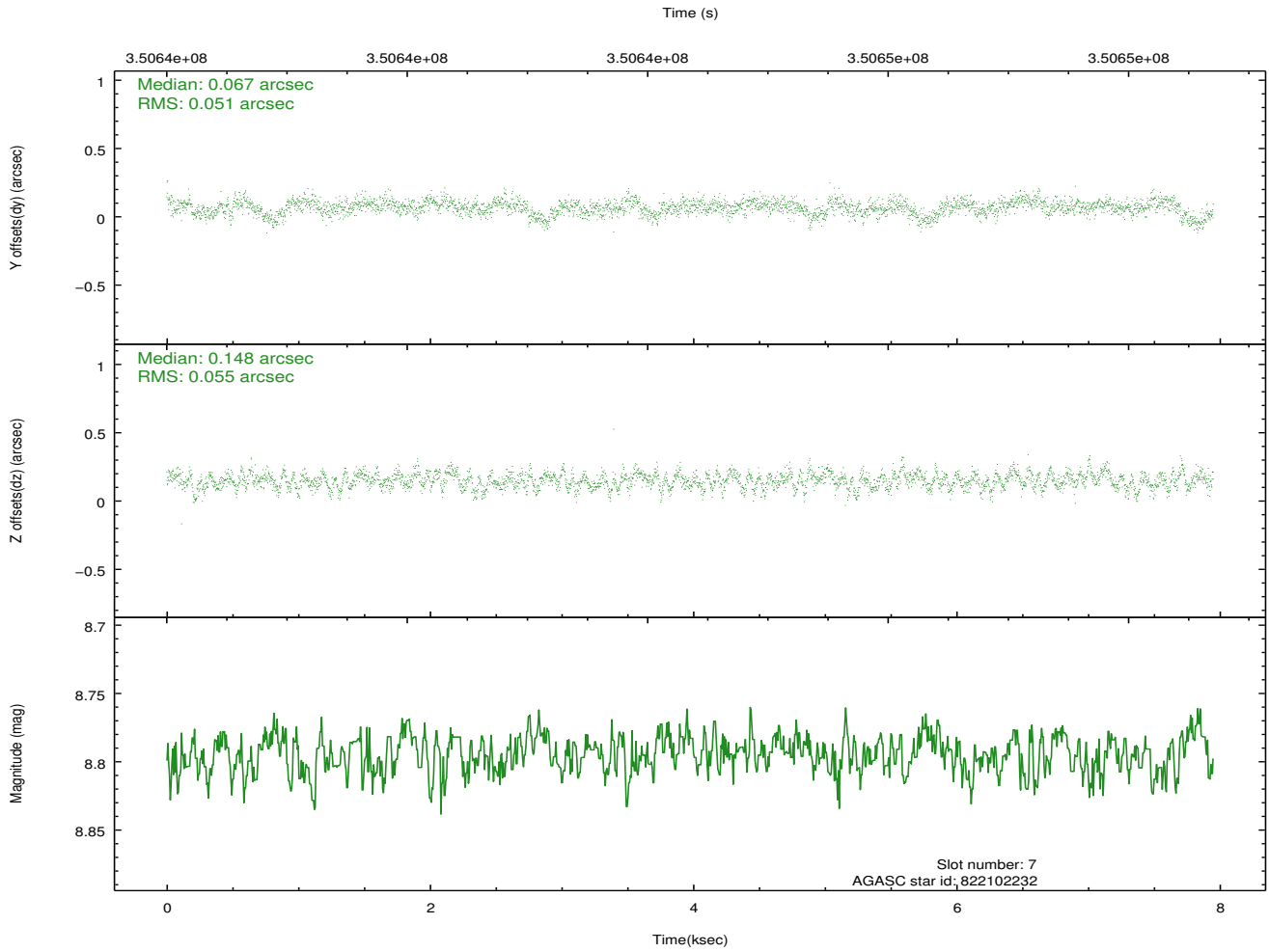
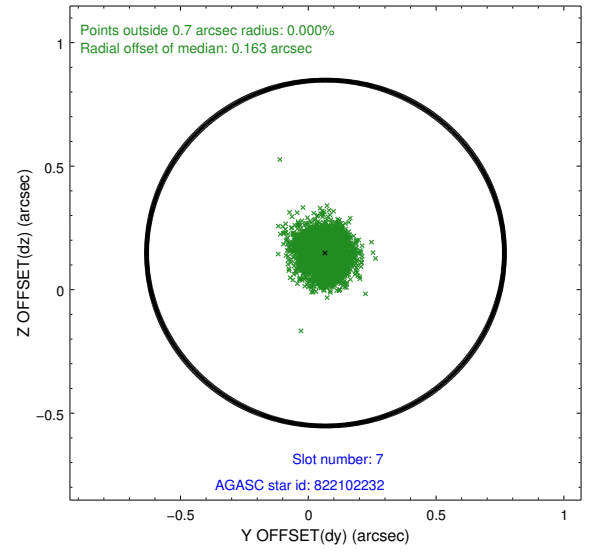
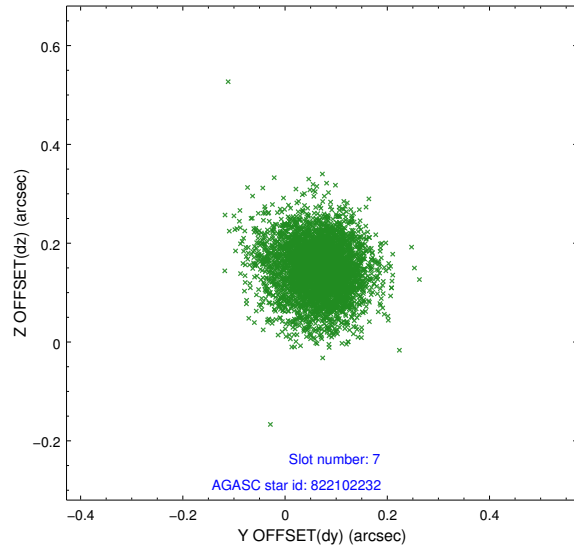


## 2.4.4 Slot 6



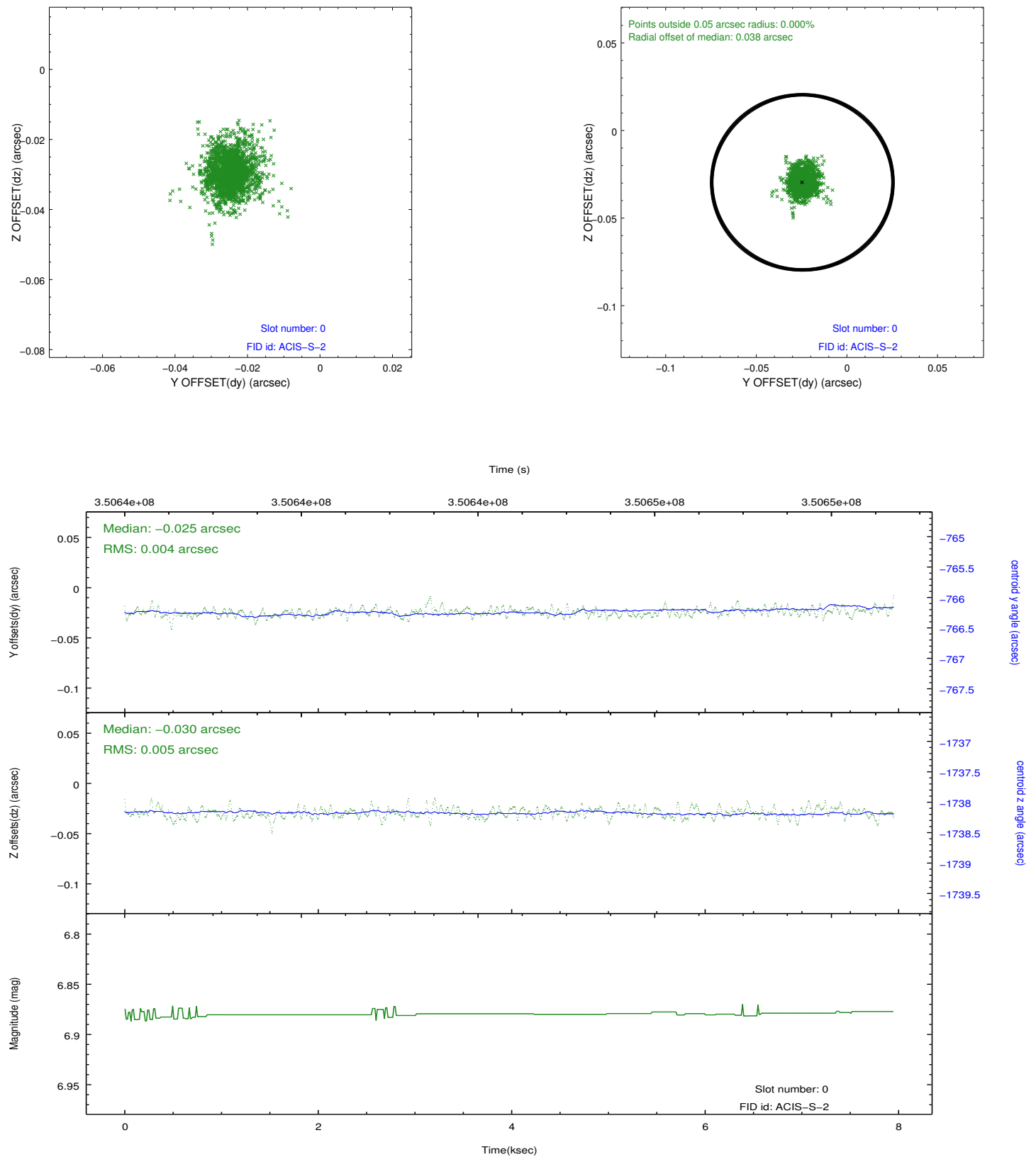


## 2.4.5 Slot 7

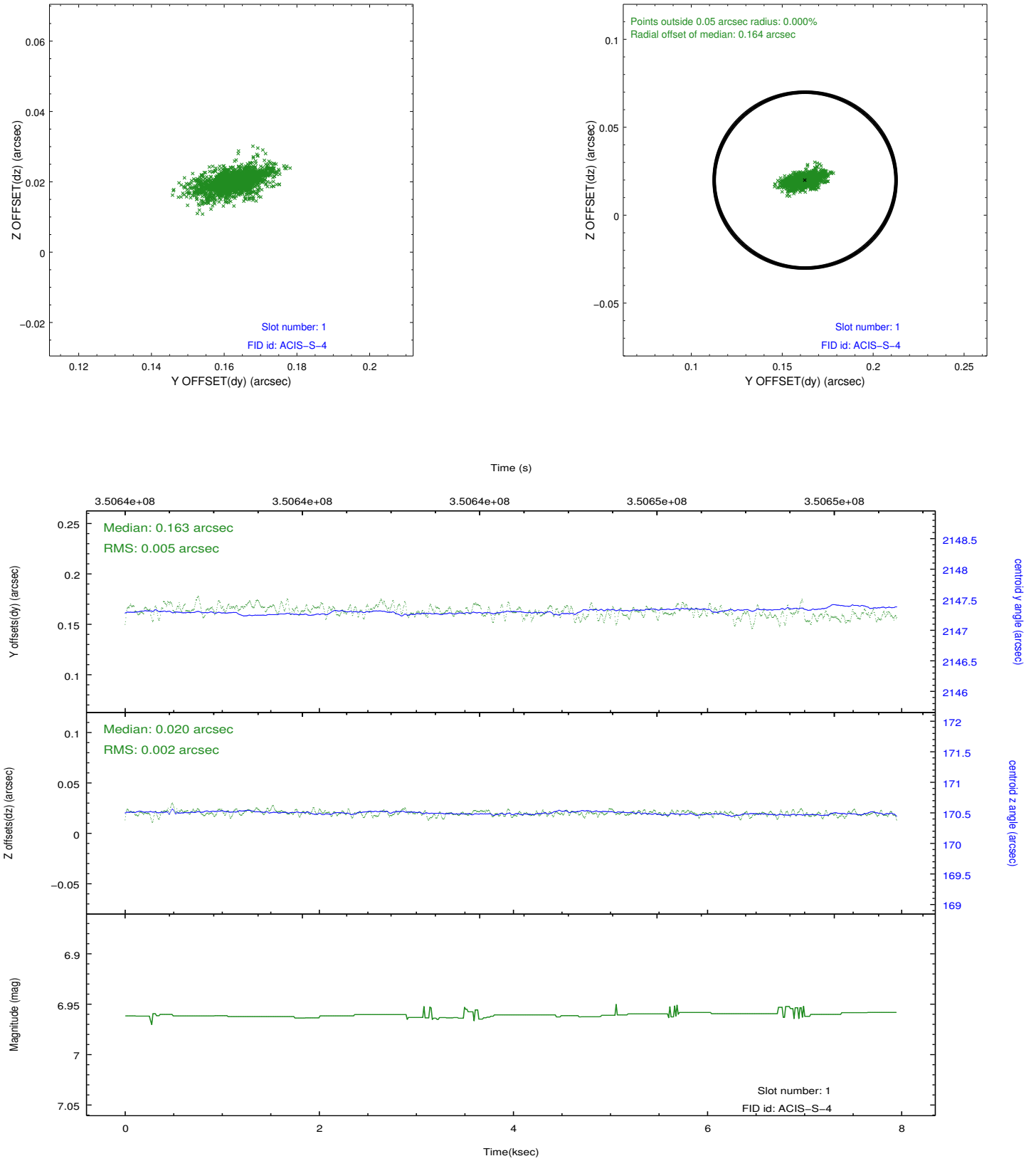


## 2.5 FID Slots

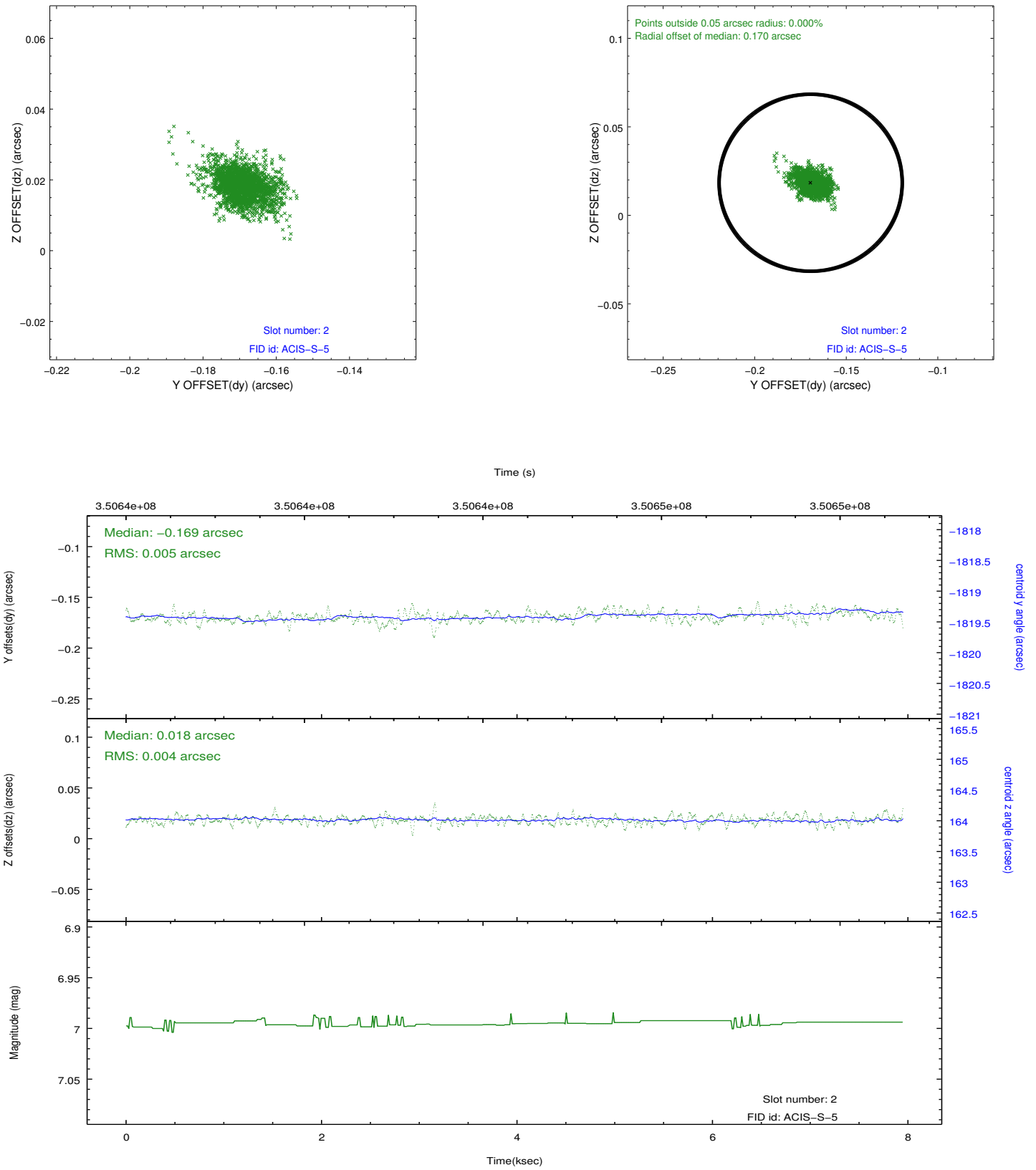
### 2.5.1 Slot 0



## 2.5.2 Slot 1



### 2.5.3 Slot 2



## A Summary

### A.1 Status

V&V Scientist	Jen Lauer
V&V Date (YYYY-MM-DD)	2012.06.06
V&V Edition	1
V&V Disposition and Status	OK
V&V Charge Time	6.55039997

### A.2 Comments