

V&V Reference Report

L2 ASCDS Version : 8.4.4

Observation 10398 - L2 Version 2
Chandra X-Ray Center

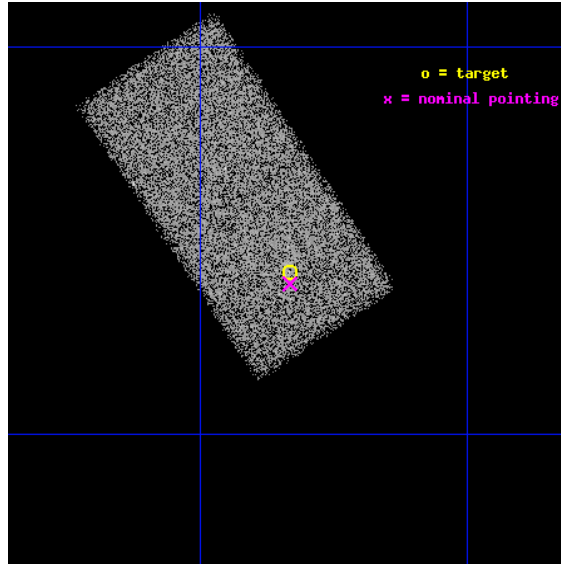
L2 Processing Date : Jun 2 2012

Contents

1	Front	2
2	OBI	3
2.1	OBI	3
2.1.1	Images	3
2.1.2	Bias	3
2.1.3	Parameters	4
2.1.4	Events	4
2.2	Compared Parameters	5
2.3	Aspect	6
2.4	Star Slots	9
2.4.1	Slot 3	9
2.4.2	Slot 4	10
2.4.3	Slot 5	11
2.4.4	Slot 6	12
2.4.5	Slot 7	13
2.5	FID Slots	14
2.5.1	Slot 0	14
2.5.2	Slot 1	15
2.5.3	Slot 2	16
A	Summary	17
A.1	Status	17
A.2	Comments	17

1 Front

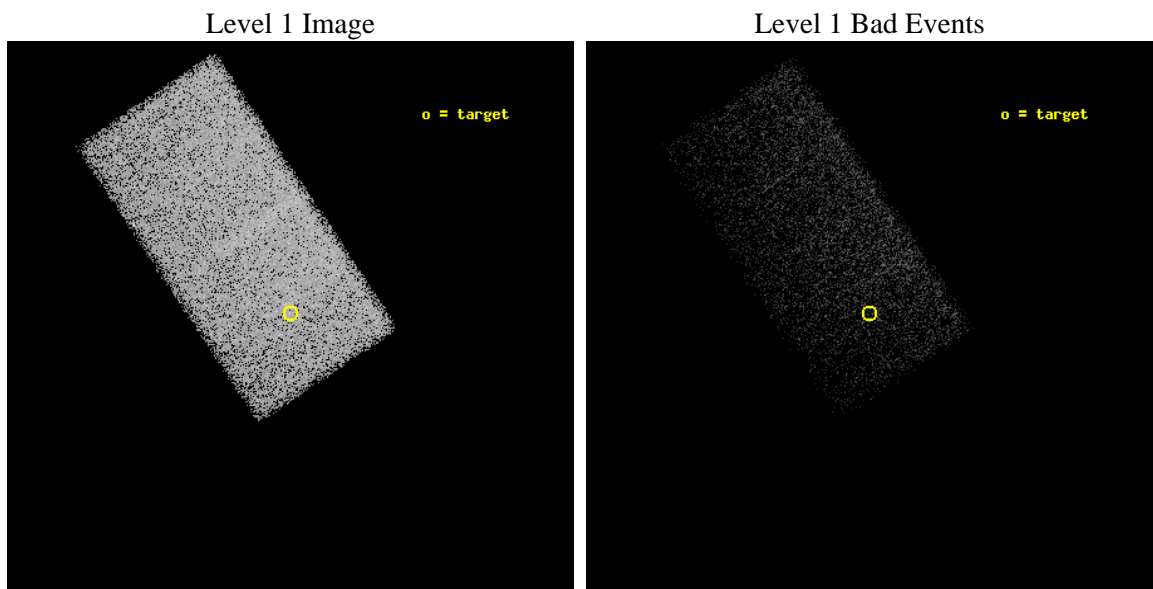
seq_num	701941	Sequence number
obs_id	10398	Observation id
title	A Complete Census of AGN Activity in Luminous Infrared Galaxies	Pr
observer	Dr David Alexander	Principal investigator
object	NGC3221	Source name
dtcycle	0	
cycle	P	events from which exps? Prim/Second/Both
ra_targ	155.583333	Observer's specified target RA [deg]
dec_targ	21.569444	Observer's specified target Dec [deg]
ra_nom	155.58313364355	Nominal RA [deg]
dec_nom	21.564588761824	Nominal Dec [deg]
roll_nom	236.15669721828	Nominal Roll [deg]
revision	2	Processing version of data
ontime	19549.5	Sum of GTIs [s]
livetime	19028.870113689	Livetime [s]
ontime7	19549.5	Sum of GTIs [s]
l2events	39507	Number of level 2 events



2 OBI

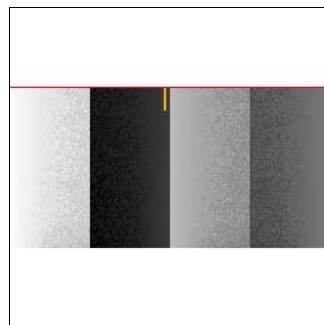
2.1 OBI

2.1.1 Images



2.1.2 Bias

Chip 7



2.1.3 Parameters

obi_num	0	Obi number	sched_exp_time	19700.000000	[s] Scheduled observation exposure time
ascdsver	8.4.4	Processing system revision	ontime	19549.5	Sum of GTIs [s]
caldsver	4.4.9	 	ontime7	19549.5	Sum of GTIs [s]
date	2012-06-02T15:08:17	Date and time of file creation	l1events	78599	Number of level 1 events
revision	2	Processing version of data			

2.1.4 Events

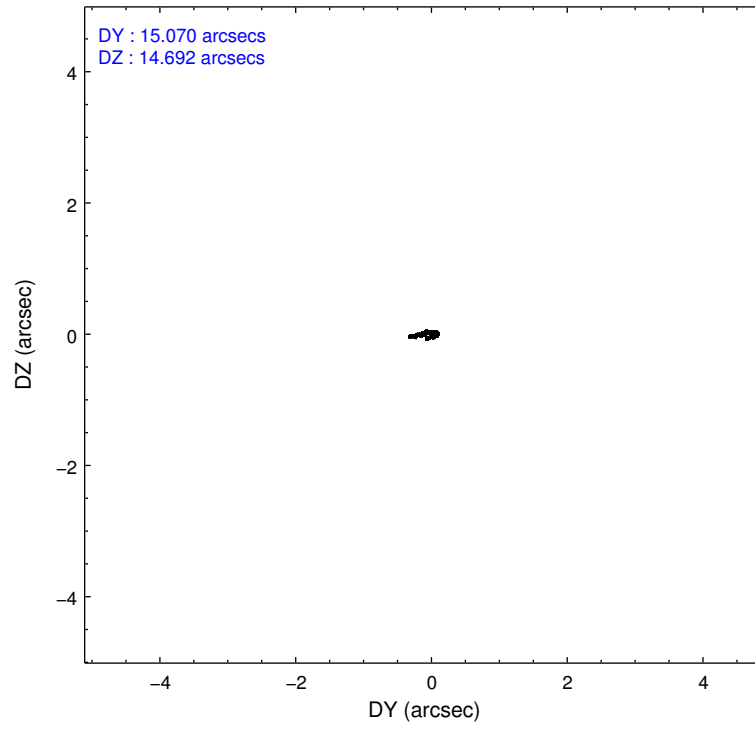
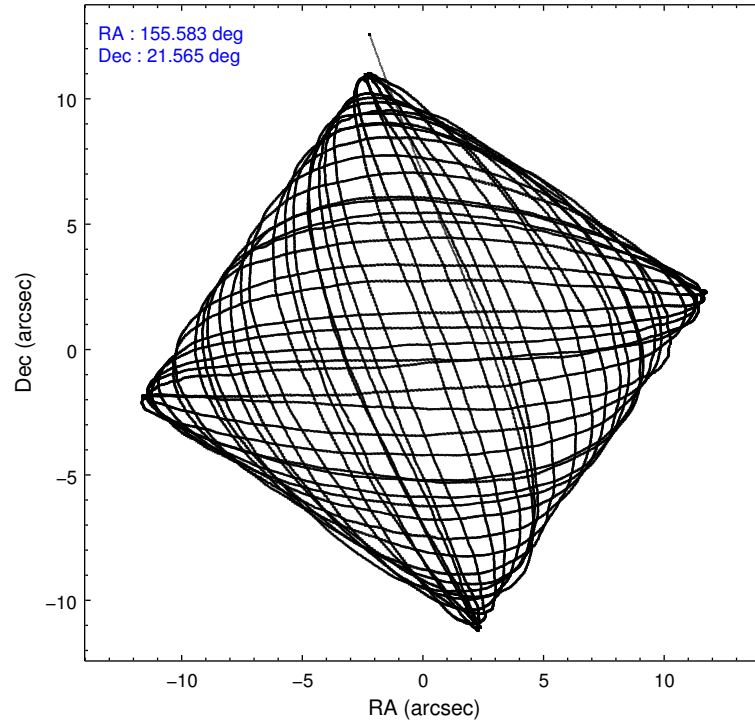
	ccd 7
level 1 events	78599
rejected events	37660
rejected %	47%

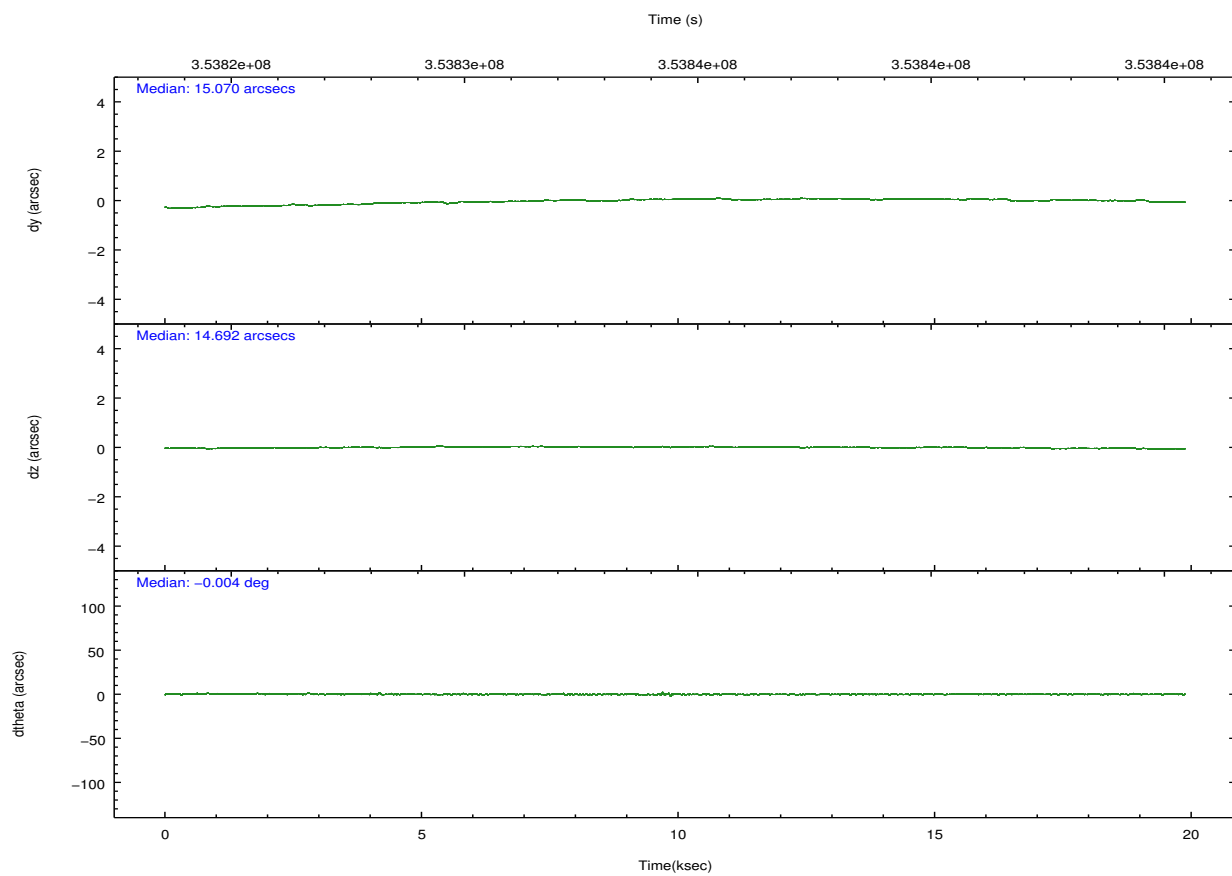
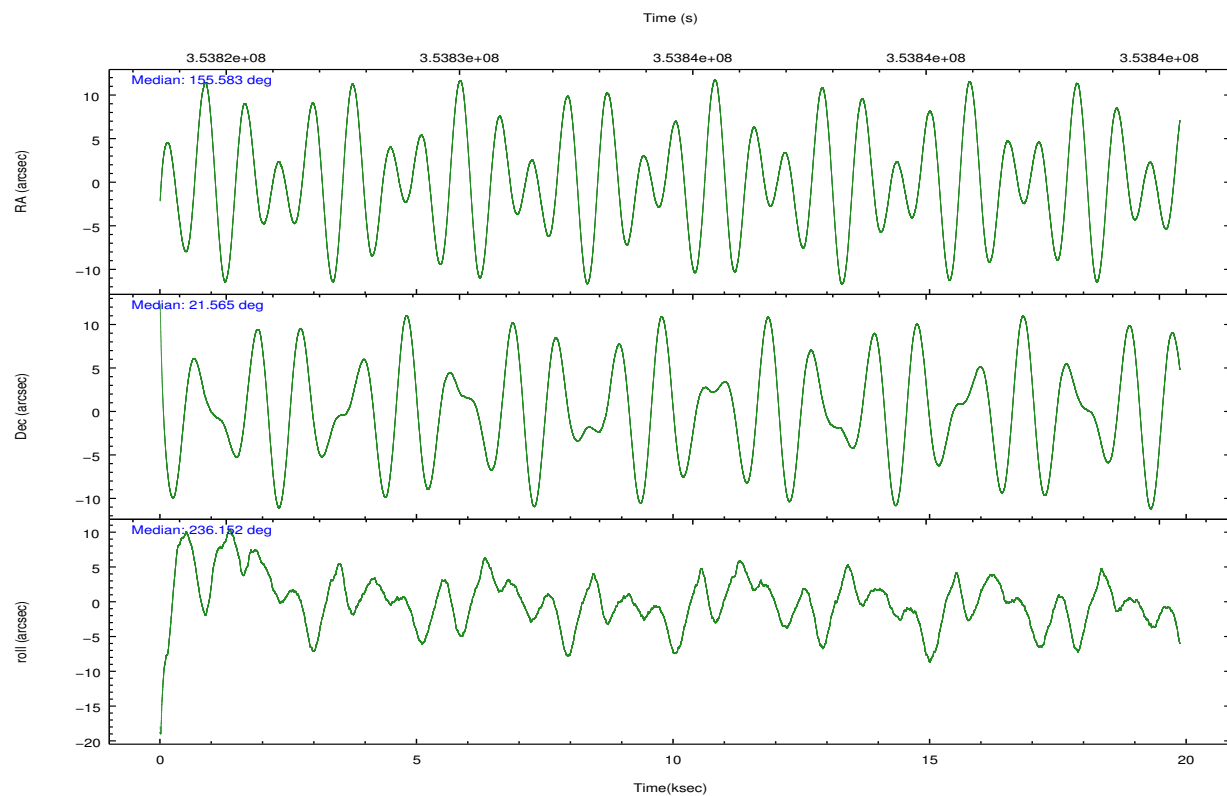
	ccd 7
grade 0 events	4490
	5%
grade 1 events	121
	0%
grade 2 events	8852
	11%
grade 3 events	4378
	5%
grade 4 events	4380
	5%
grade 5 events	8169
	10%
grade 6 events	18844
	23%
grade 7 events	29365
	37%

2.2 Compared Parameters

Parameter	Planned	Actual	Parameter	Planned	Actual
Instrument	ACIS	ACIS	Obspar format version number	7	7
Detector	ACIS-7	ACIS-7	Obspar file type	PREDICTED	ACTUAL
Grating	NONE	NONE	Obspar update status	NONE	UPDATED
Data mode	VFAINT	VFAINT	Number of optional ACIS chips dropped	0	0
Observation mode	POINTING	POINTING	On-chip summing requested	N	N
[deg] Pointing RA	155.584711	155.5831336435506	Subarray requested	CUSTOM	1/2
[deg] Pointing Dec	21.591899	21.56458876182401	Subarray start row	257	257
[deg] Pointing Roll	235.999494	236.1566972182788	Subarray row count	512	512
[mm] SIM focus pos	-0.684267	-0.6828225247311905	Alternating exposures requested	N	N
[mm] SIM defocus	0	0.001444936568705701	[s] Primary exposure time	0.000000	1.5
[mm] SIM translation stage pos	-190.132523	-190.1425803651734			
[mm] SIM translation stage offset	0	0.01005778216563158			
[s] Observation start time (MET)	353824755.184000	353823587.36573			
Observation start date	2009-03-19T04:38:09	2009-03-19T04:19:47			
[s] Observation end time (MET)	353844455.184000	353845538.76682			
Observation end date	2009-03-19T10:06:29	2009-03-19T10:25:38			
Read mode	TIMED	TIMED			

2.3 Aspect



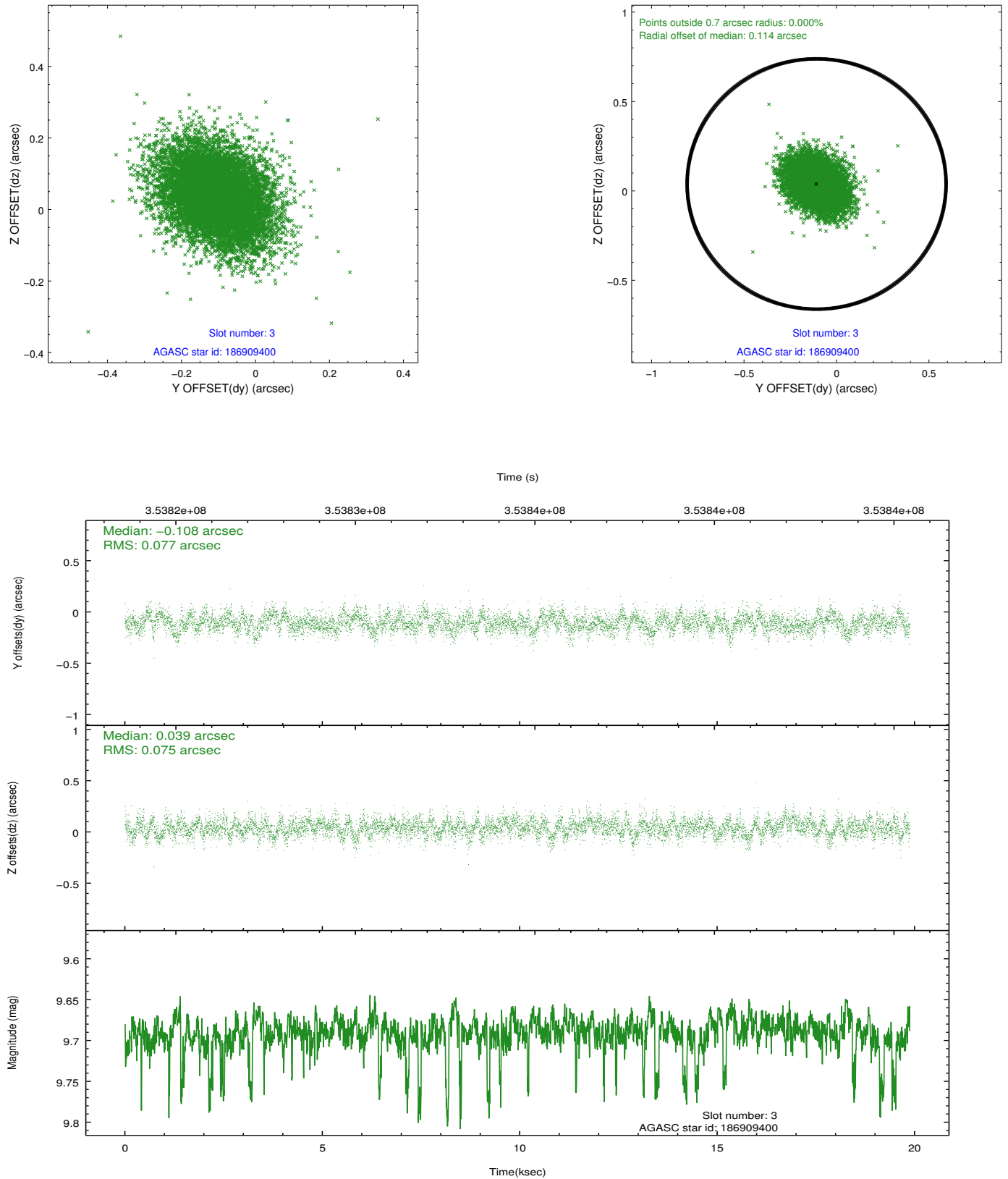


Slot Statistics

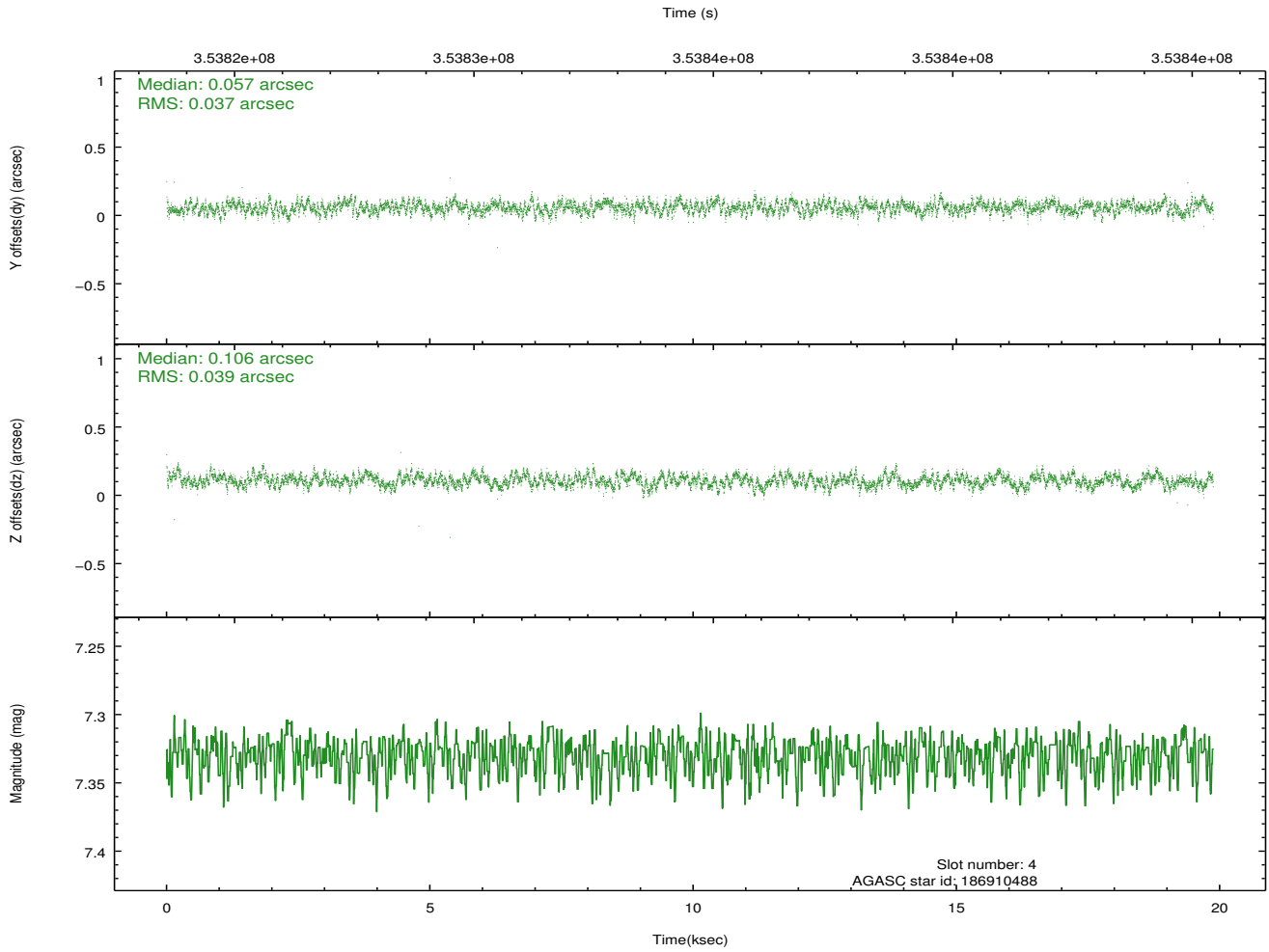
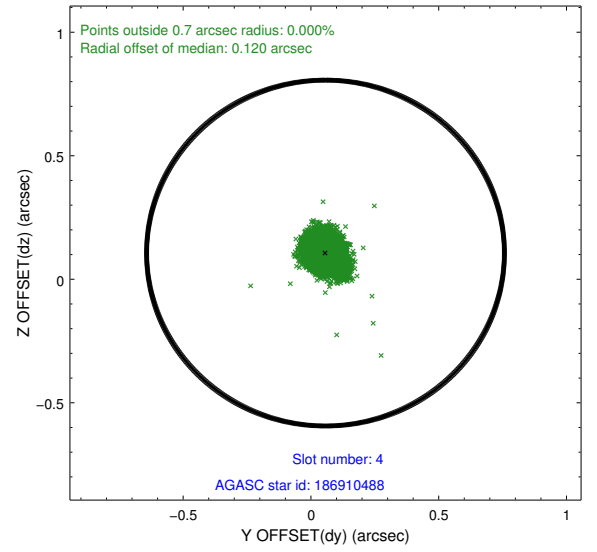
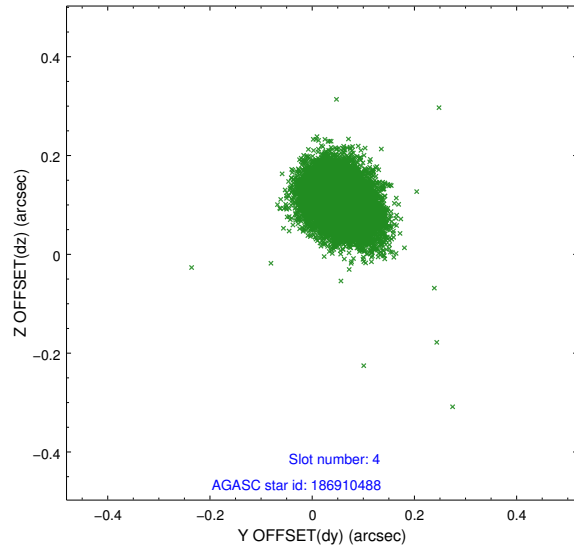
slot	status	id	mag	n_pts	med_dy	med_dz	dr1	dr2	ra	dec	mean_y	mean_z
0	FID	ACIS-S-2	6.93	4848	-0.089	-0.022	0.007	0.011	0.000000	0.000000	-768.09	-1736.03
1	FID	ACIS-S-4	7.02	4848	0.186	0.049	0.006	0.011	0.000000	0.000000	2145.37	172.34
2	FID	ACIS-S-5	7.04	4846	-0.127	-0.018	0.007	0.012	0.000000	0.000000	-1820.73	166.14
3	GUIDE	186909400	9.69	9652	-0.108	0.039	0.112	0.189	156.218285	21.895803	-2093.94	1140.39
4	GUIDE	186910488	7.33	9696	0.057	0.106	0.057	0.092	155.064237	22.011425	-282.75	-2285.95
5	GUIDE	186911048	9.24	9686	0.016	-0.196	0.106	0.168	155.458376	21.346993	968.38	141.27
6	GUIDE	186914112	9.66	9679	0.013	-0.056	0.114	0.182	155.554039	21.133922	1424.79	836.86
7	GUIDE	186915456	10.32	9680	0.021	0.107	0.160	0.263	155.848298	20.834514	1764.23	2260.15

2.4 Star Slots

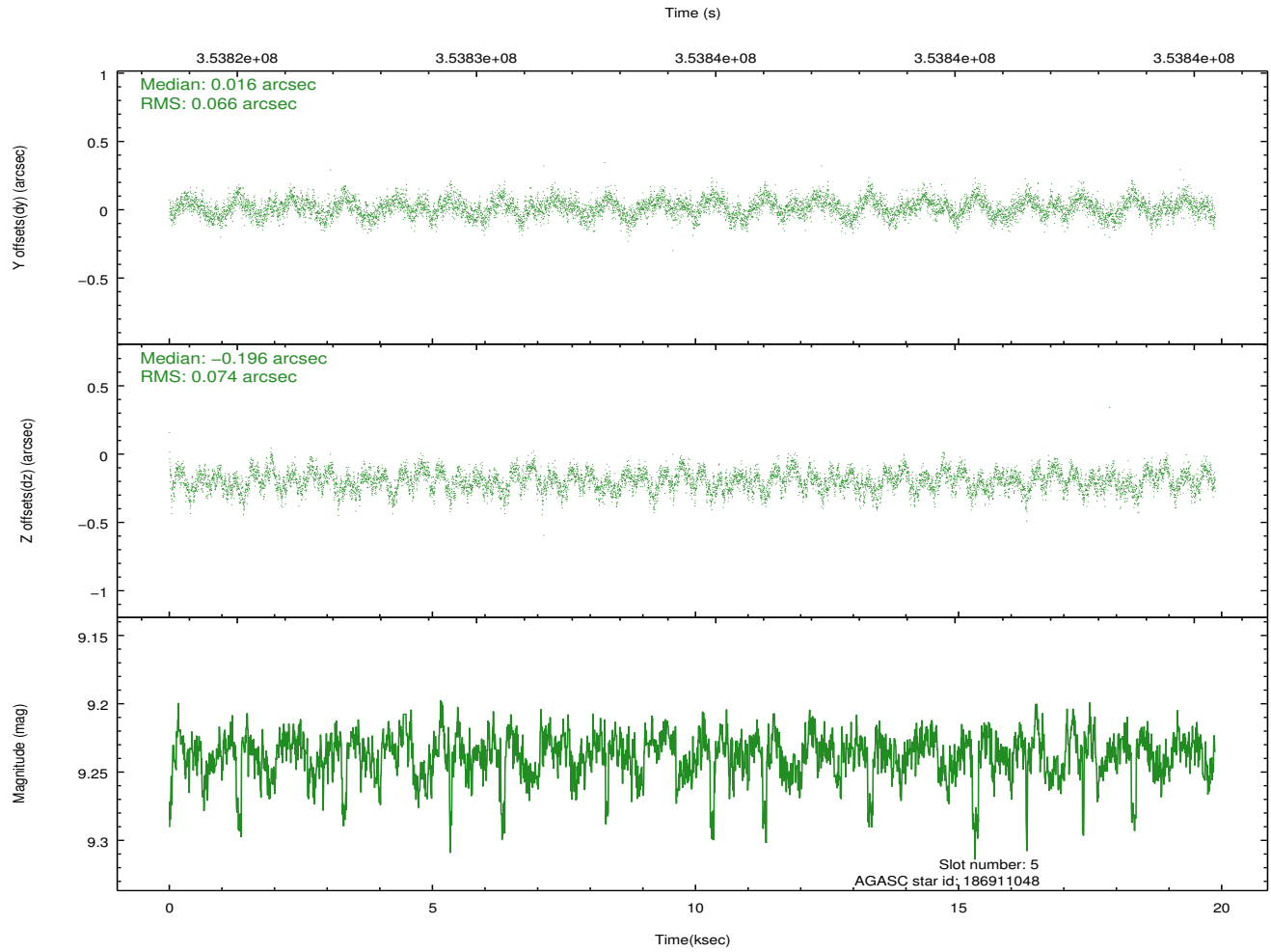
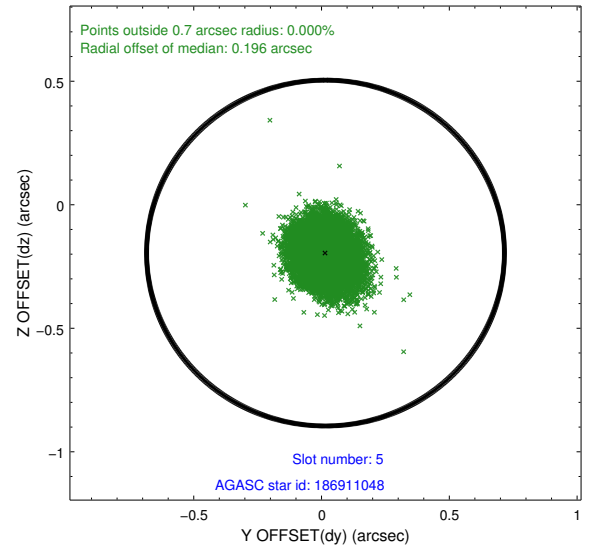
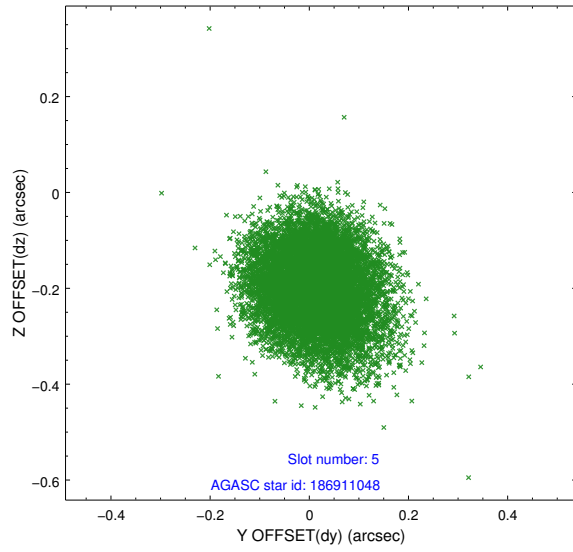
2.4.1 Slot 3



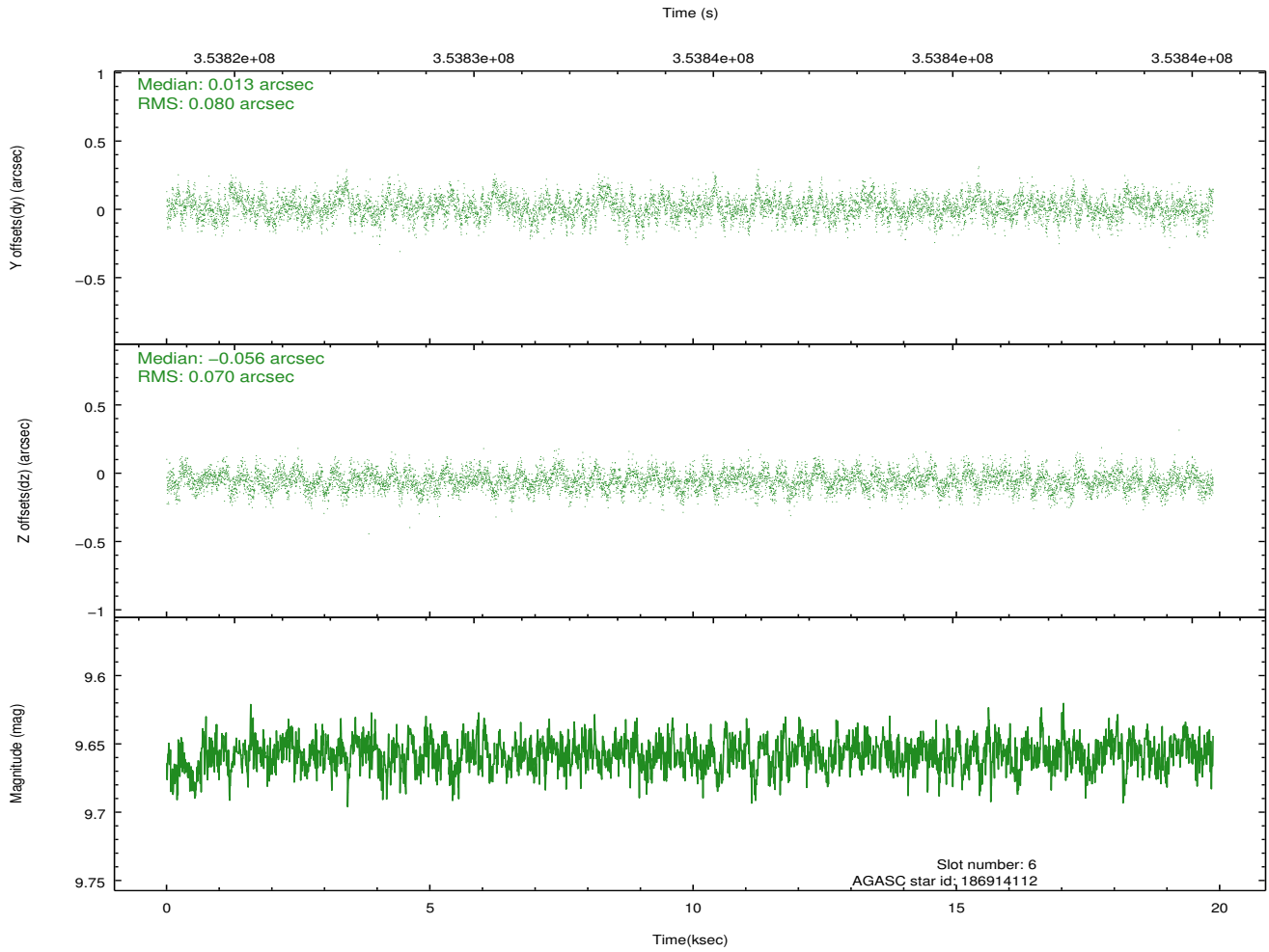
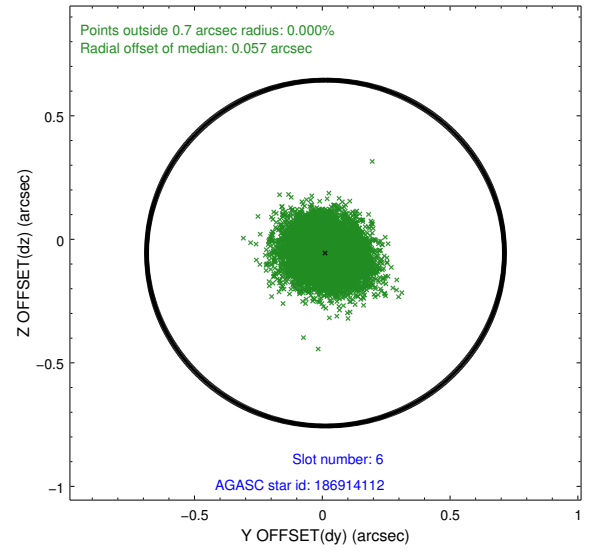
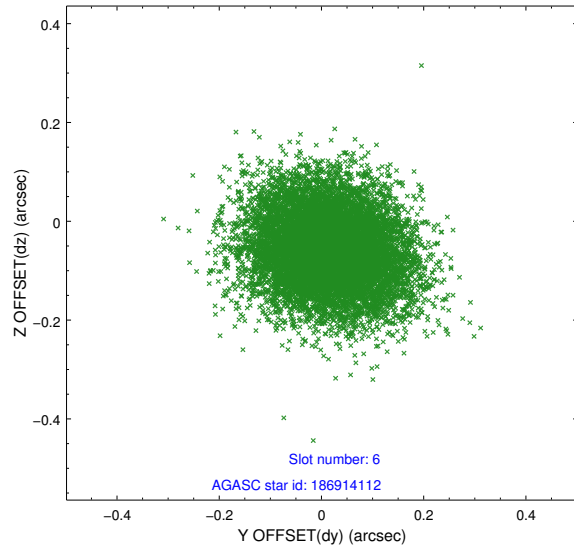
2.4.2 Slot 4



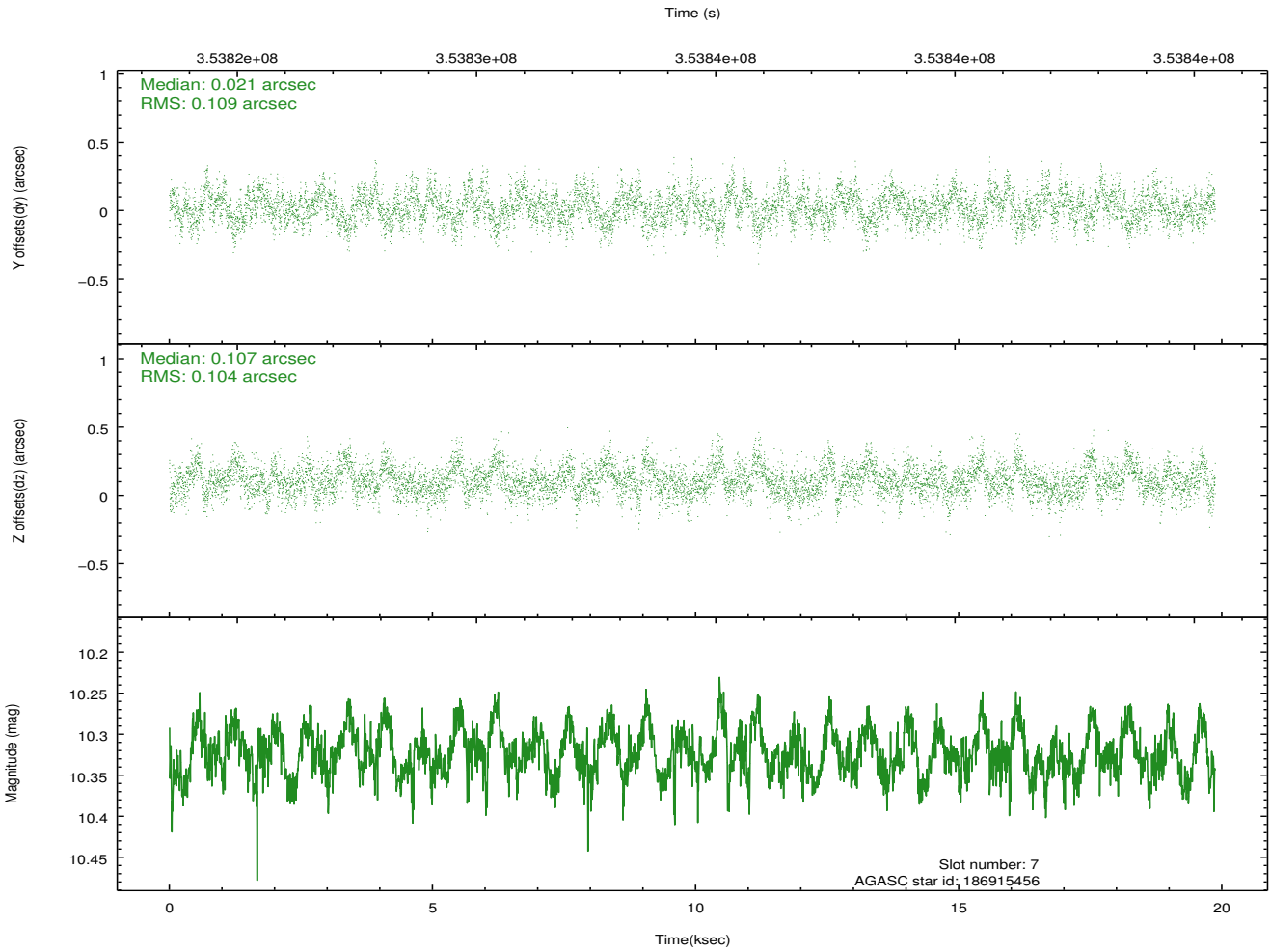
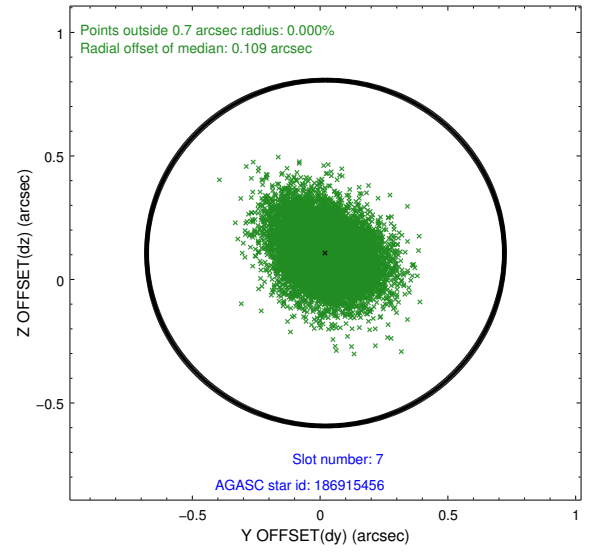
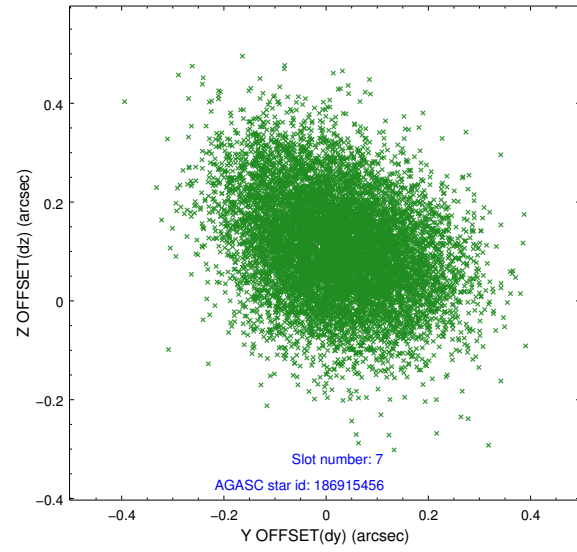
2.4.3 Slot 5



2.4.4 Slot 6

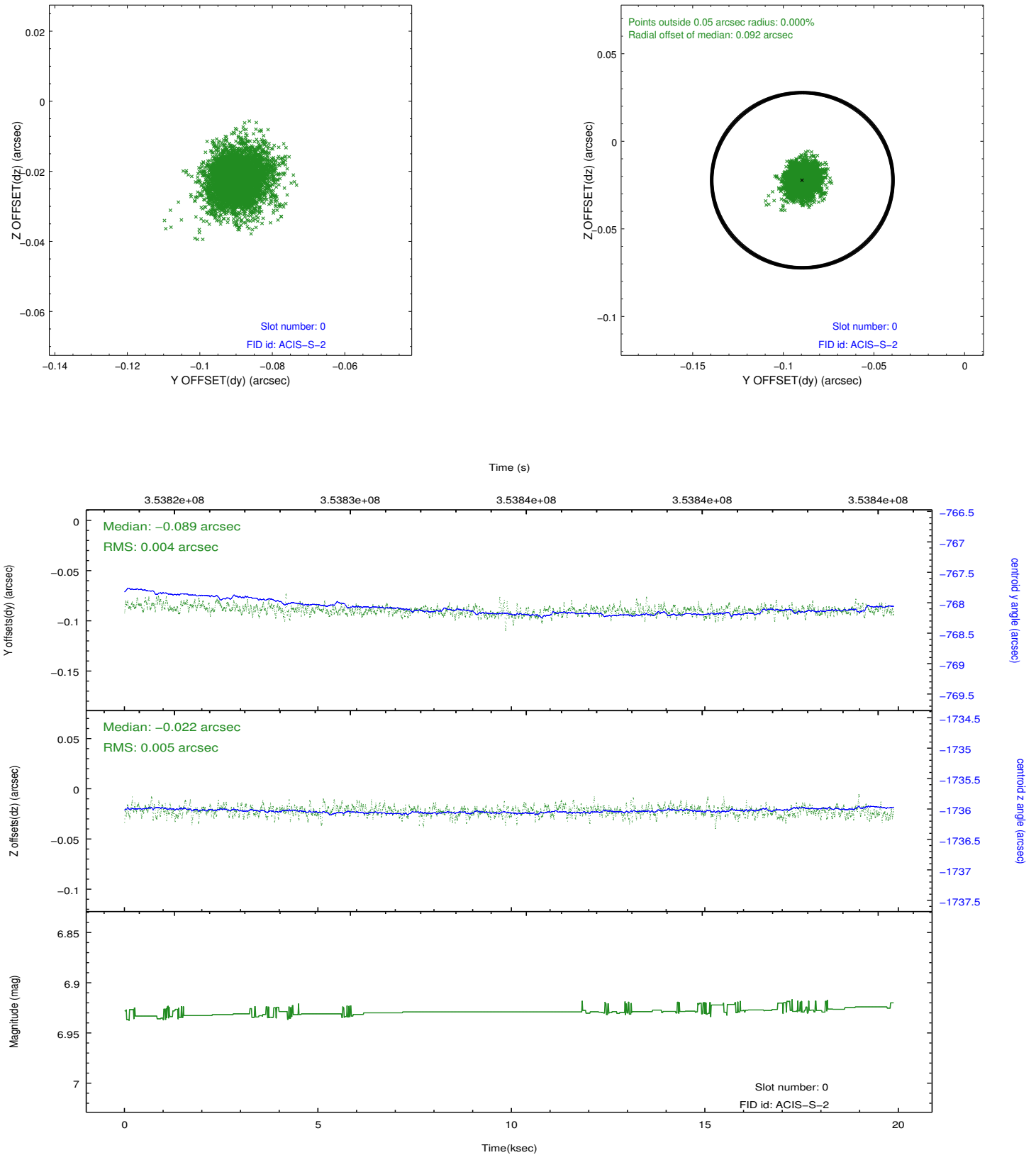


2.4.5 Slot 7

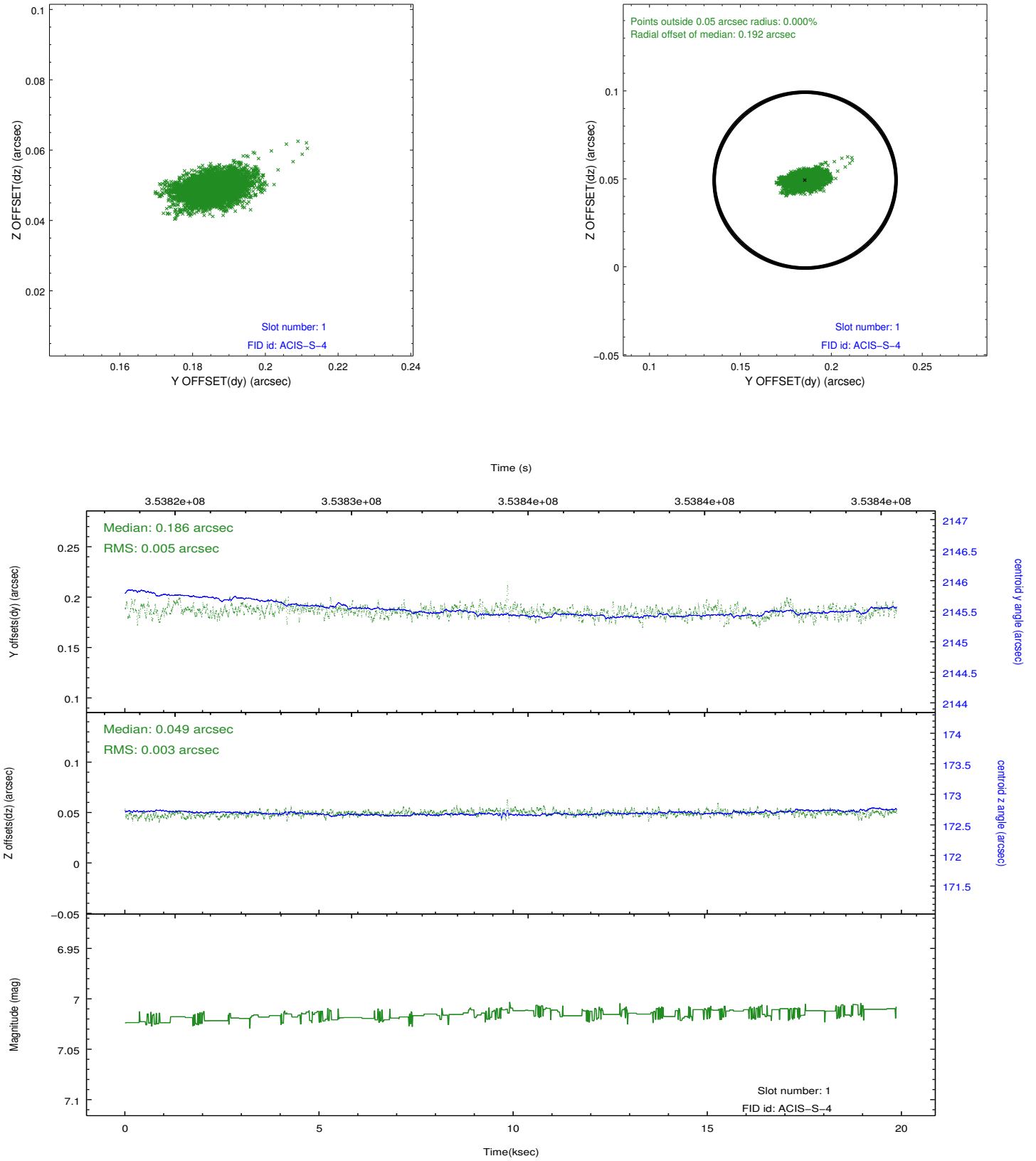


2.5 FID Slots

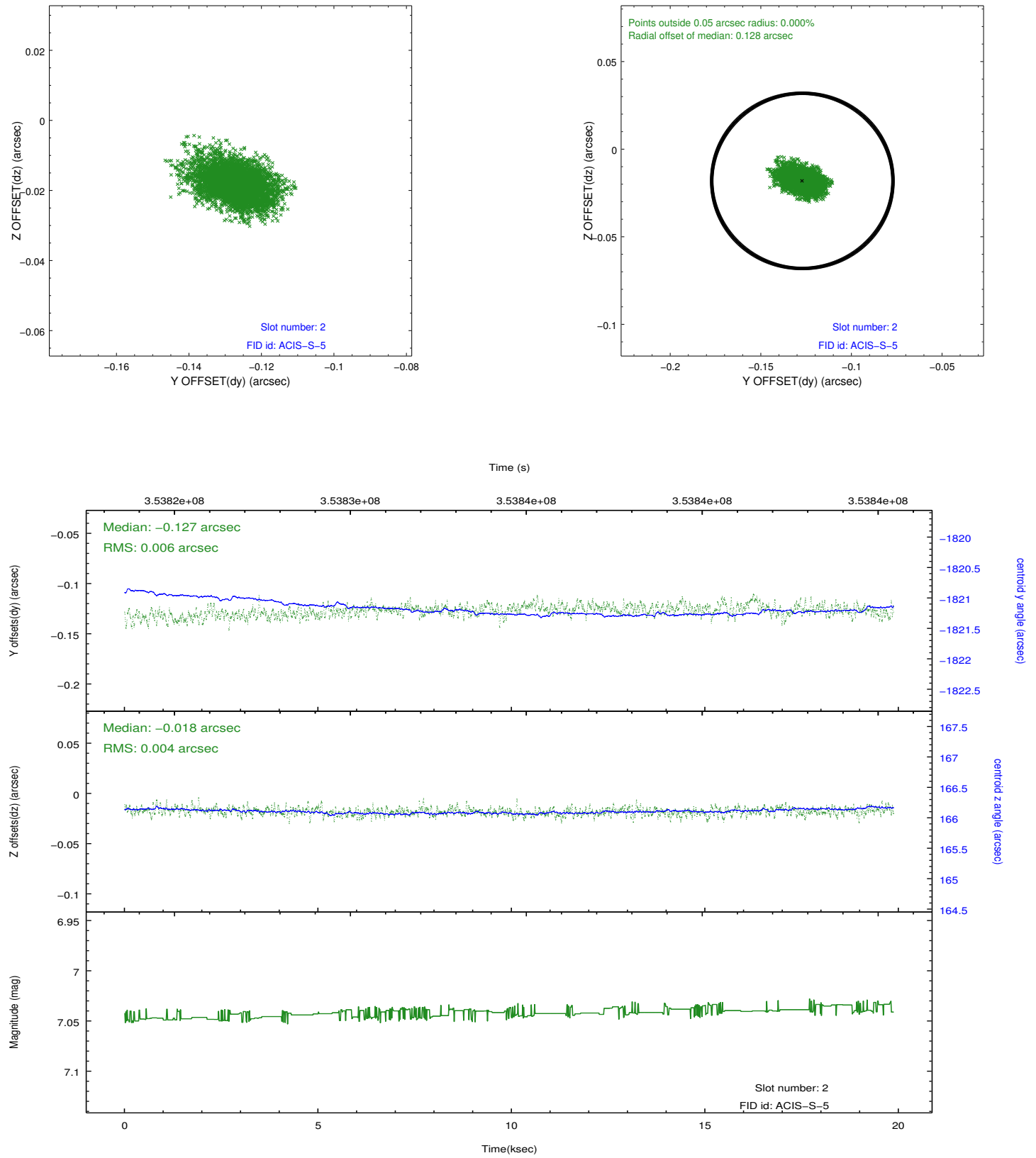
2.5.1 Slot 0



2.5.2 Slot 1



2.5.3 Slot 2



A Summary

A.1 Status

V&V Scientist	Beth Sundheim
V&V Date (YYYY-MM-DD)	2012.06.07
V&V Edition	1
V&V Disposition and Status	OK
V&V Charge Time	19.5495

A.2 Comments