

# V&V Reference Report

## L2 ASCDS Version : 8.4.3

Observation 7277 - L2 Version 2  
Chandra X-Ray Center

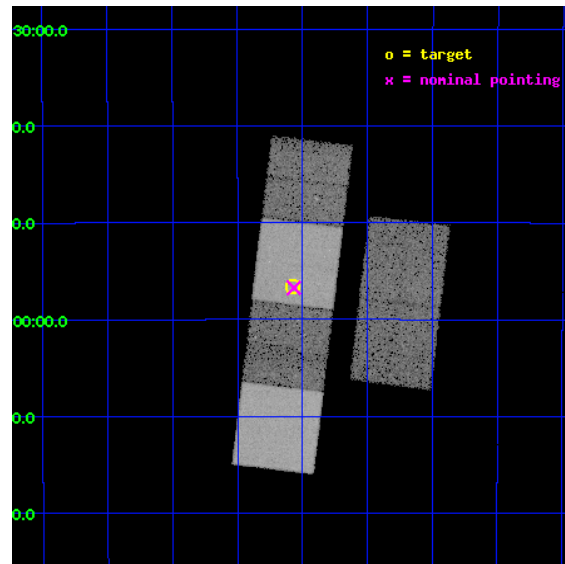
L2 Processing Date : Mar 25 2012

## Contents

<b>1</b>	<b>Front</b>	<b>2</b>
<b>2</b>	<b>OBI</b>	<b>3</b>
2.1	OBI . . . . .	3
2.1.1	Images . . . . .	3
2.1.2	Bias . . . . .	3
2.1.3	Parameters . . . . .	4
2.1.4	Events . . . . .	4
2.2	Compared Parameters . . . . .	5
2.3	Aspect . . . . .	6
2.4	Star Slots . . . . .	9
2.4.1	Slot 3 . . . . .	9
2.4.2	Slot 4 . . . . .	10
2.4.3	Slot 5 . . . . .	11
2.4.4	Slot 6 . . . . .	12
2.4.5	Slot 7 . . . . .	13
2.5	FID Slots . . . . .	14
2.5.1	Slot 0 . . . . .	14
2.5.2	Slot 1 . . . . .	15
2.5.3	Slot 2 . . . . .	16
<b>A</b>	<b>Summary</b>	<b>17</b>
A.1	Status . . . . .	17
A.2	Comments . . . . .	17

# 1 Front

seq_num	500693	Sequence number
obs_id	7277	Observation id
title	Chandra observation of the Type Ia SN 2005ke	Proposal title
observer	Dr Stefan Immler	Principal investigator
object	SN 2005ke	Source name
dtcycle	0	&#160
cycle	P	events from which exps? Prim/Second/Both
ra_targ	53.768333	Observer's specified target RA [deg]
dec_targ	-24.944111	Observer's specified target Dec [deg]
ra_nom	53.766686784799	Nominal RA [deg]
dec_nom	-24.945547590479	Nominal Dec [deg]
roll_nom	276.87102701174	Nominal Roll [deg]
revision	2	Processing version of data
ontime	14998.399944127	Sum of GTIs [s]
livetime	14808.481173082	Livetime [s]
ontime2	14998.399944127	Sum of GTIs [s]
ontime3	14998.399944127	Sum of GTIs [s]
ontime5	14998.399944127	Sum of GTIs [s]
ontime6	14998.399944127	Sum of GTIs [s]
ontime7	14998.399944127	Sum of GTIs [s]
ontime8	14998.399944127	Sum of GTIs [s]
l2events	212362	Number of level 2 events

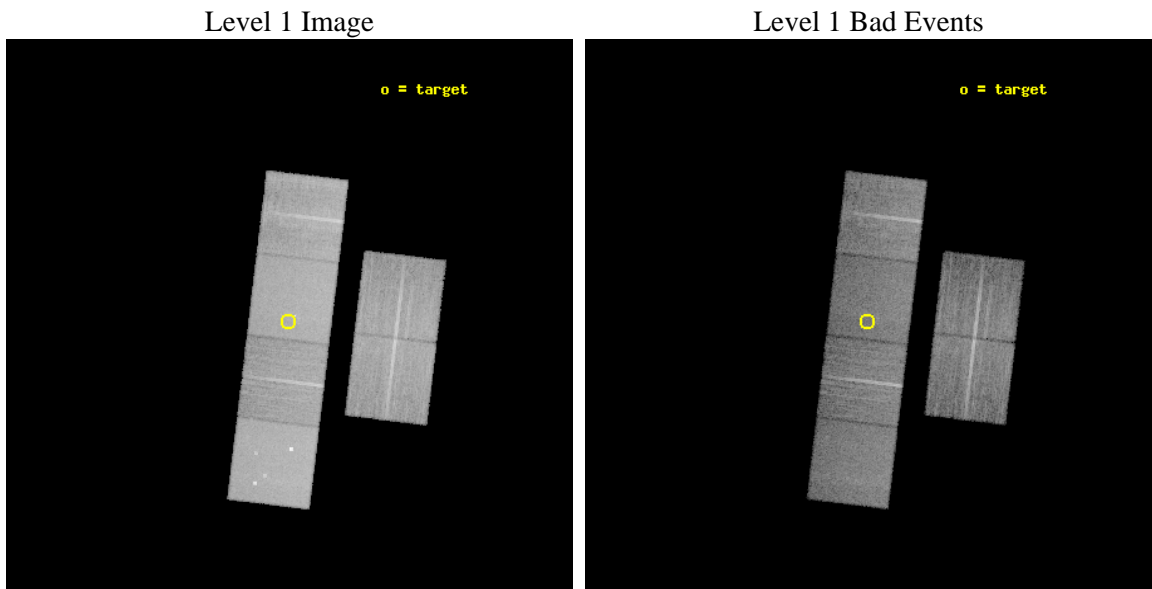




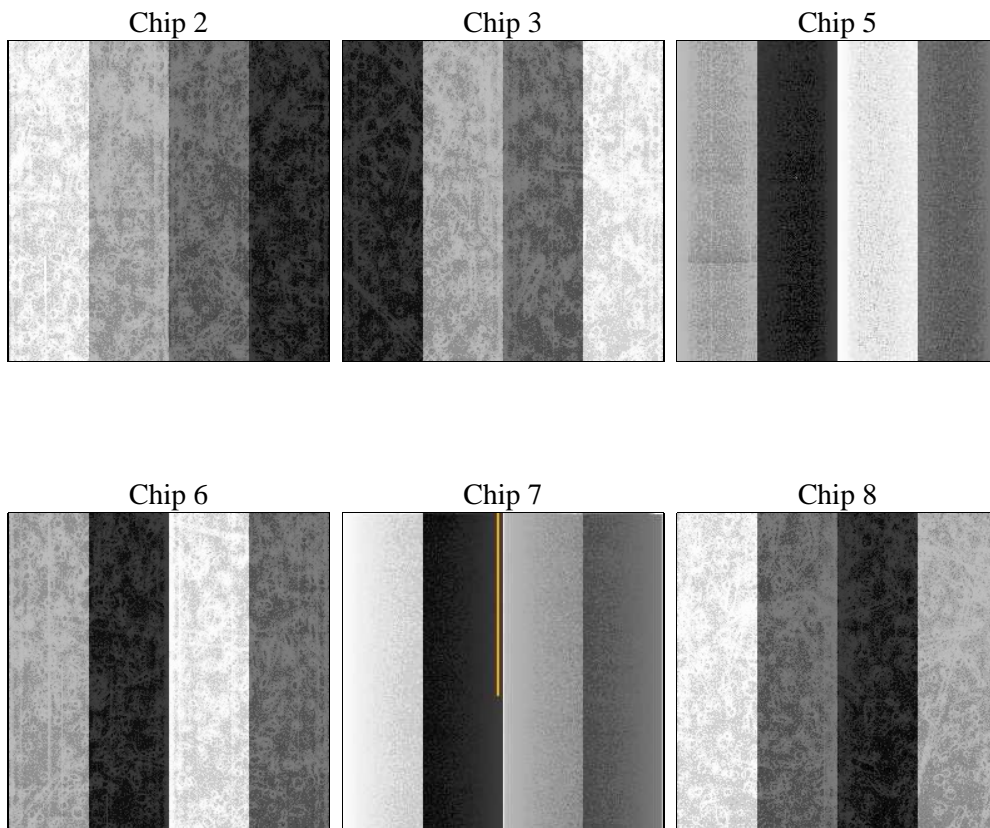
## 2 OBI

### 2.1 OBI

#### 2.1.1 Images



#### 2.1.2 Bias



### 2.1.3 Parameters

obi_num	0	Obi number	sched_exp_time	14900.000000	[s] Scheduled observation exposure time
ascdsver	8.4.3	Processing system revision	ontime	14998.399944127	Sum of GTIs [s]
caldsver	4.4.8	&#160	ontime2	14998.399944127	Sum of GTIs [s]
date	2012-03-25T17:54:24	Date and time of file creation	ontime3	14998.399944127	Sum of GTIs [s]
revision	2	Processing version of data	ontime5	14998.399944127	Sum of GTIs [s]
			ontime6	14998.399944127	Sum of GTIs [s]
			ontime7	14998.399944127	Sum of GTIs [s]
			ontime8	14998.399944127	Sum of GTIs [s]
			l1events	1000547	Number of level 1 events

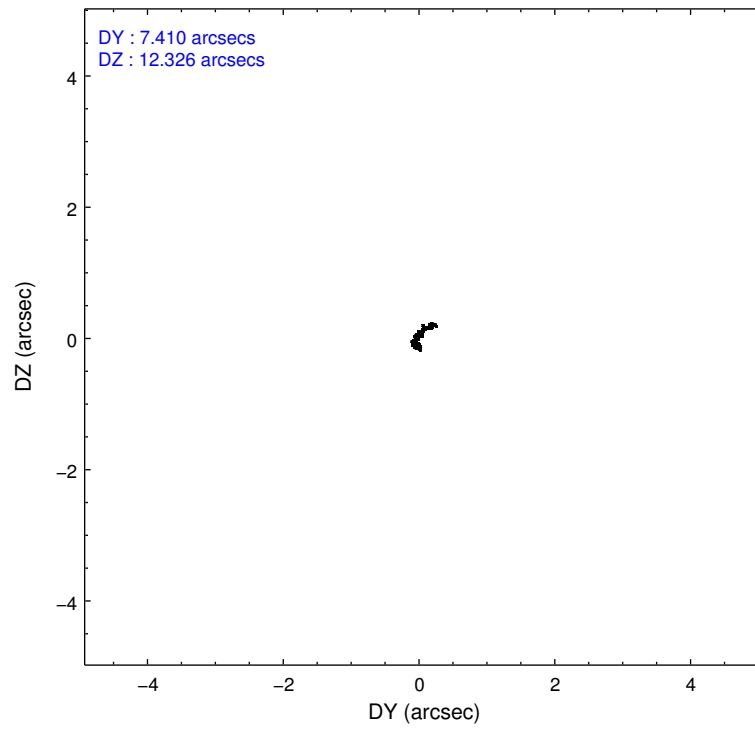
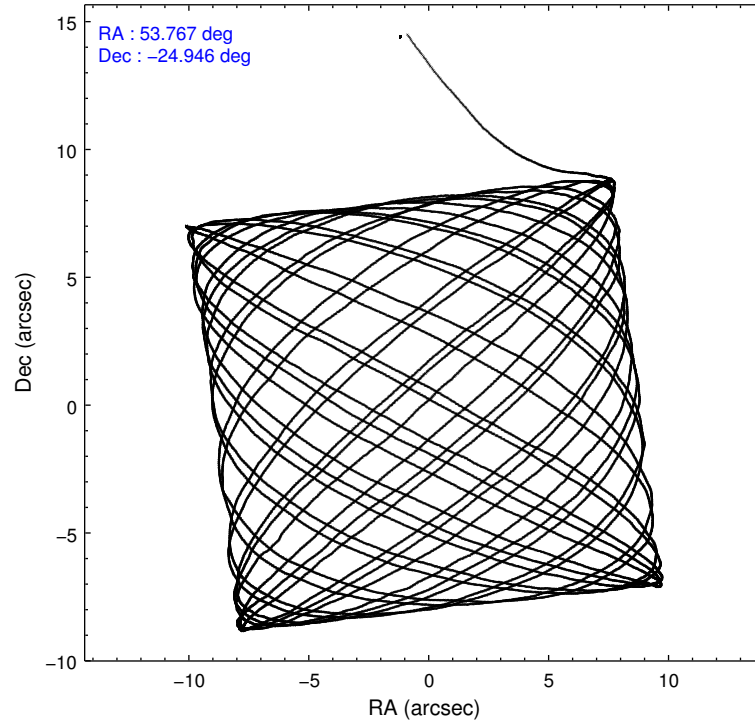
### 2.1.4 Events

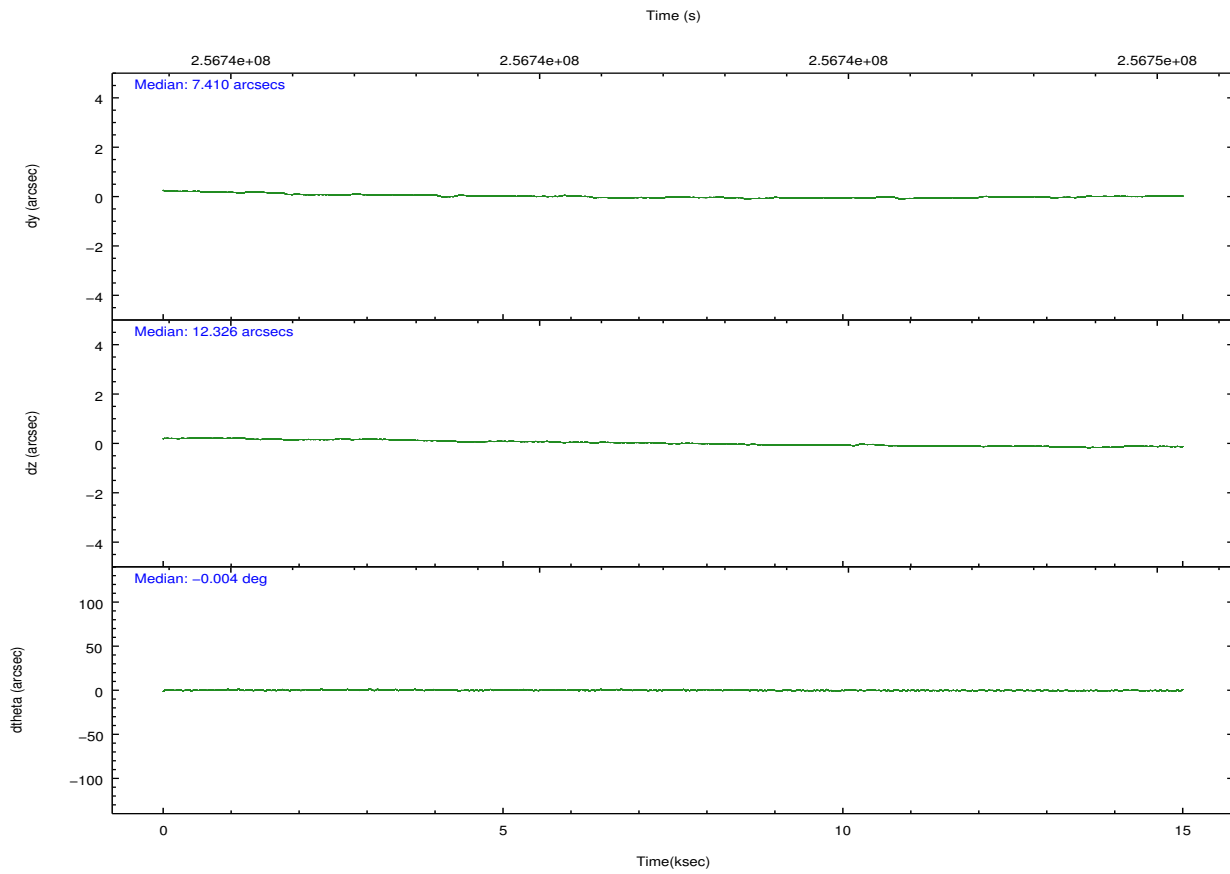
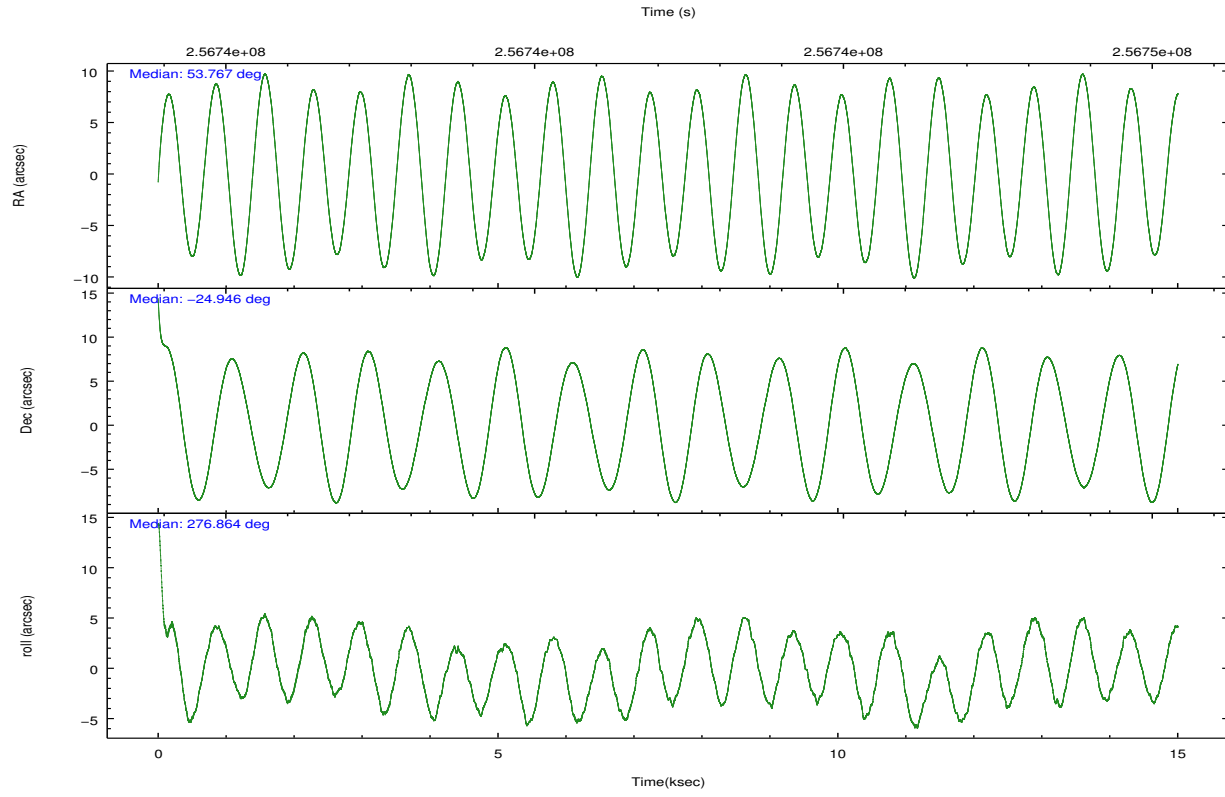
	ccd 2	ccd 3	ccd 5	ccd 6	ccd 7	ccd 8		ccd 2	ccd 3	ccd 5	ccd 6	ccd 7	ccd 8
level 1 events	144949	135575	213428	140080	190110	176405	grade 0 events	7369	6917	12499	6619	7300	11932
rejected events	129766	120498	120414	124588	115786	141269		5%	5%	5%	4%	3%	6%
rejected %	89%	88%	56%	88%	60%	80%	grade 1 events	100	96	320	72	179	142
								0%	0%	0%	0%	0%	0%
							grade 2 events	3348	3175	28983	3480	16311	8546
								2%	2%	13%	2%	8%	4%
							grade 3 events	1425	1603	3711	1642	6942	3907
								0%	1%	1%	1%	3%	2%
							grade 4 events	1538	1611	3632	1577	7015	3756
								1%	1%	1%	1%	3%	2%
							grade 5 events	5480	6144	15266	6303	18050	8604
								3%	4%	7%	4%	9%	4%
							grade 6 events	2674	2934	51374	3357	42365	9857
								1%	2%	24%	2%	22%	5%
							grade 7 events	123015	113095	97643	117030	91948	129661
								84%	83%	45%	83%	48%	73%

## 2.2 Compared Parameters

Parameter	Planned	Actual	Parameter	Planned	Actual
Instrument	ACIS	ACIS	Obspar format version number	7	7
Detector	ACIS-235678	ACIS-235678	Obspar file type	PREDICTED	ACTUAL
Grating	NONE	NONE	Obspar update status	NONE	UPDATED
Data mode	FAINT	FAINT	Number of optional ACIS chips dropped	0	0
Observation mode	POINTING	POINTING	On-chip summing requested	N	N
[deg] Pointing RA	53.748323	53.76668678479865	Subarray requested	NONE	NONE
[deg] Pointing Dec	-24.923982	-24.94554759047862	Alternating exposures requested	N	N
[deg] Pointing Roll	276.706653	276.8710270117399	[s] Primary exposure time	0.000000	3.2
[mm] SIM focus pos	-0.684267	-0.6828225247311905			
[mm] SIM defocus	0	0.001444936568705701			
[mm] SIM translation stage pos	-190.132523	-190.1400660498719			
[mm] SIM translation stage offset	0	0.00754346686406393			
[s] Observation start time (MET)	256734760.184000	256733153.6766			
Observation start date	2006-02-19T11:11:35	2006-02-19T10:45:53			
[s] Observation end time (MET)	256749660.184000	256750135.87739			
Observation end date	2006-02-19T15:19:55	2006-02-19T15:28:55			
Read mode	TIMED	TIMED			

## 2.3 Aspect



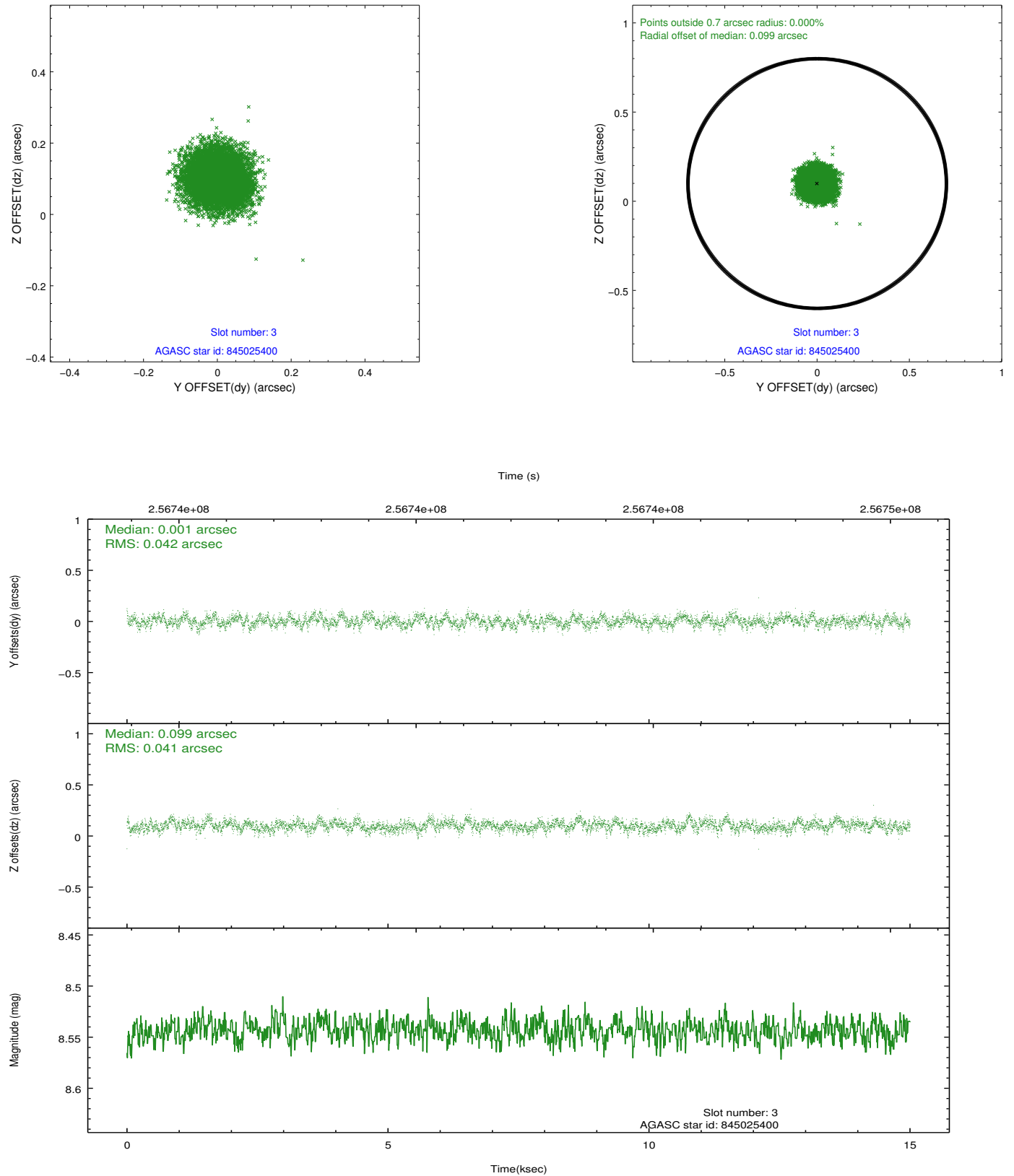


### Slot Statistics

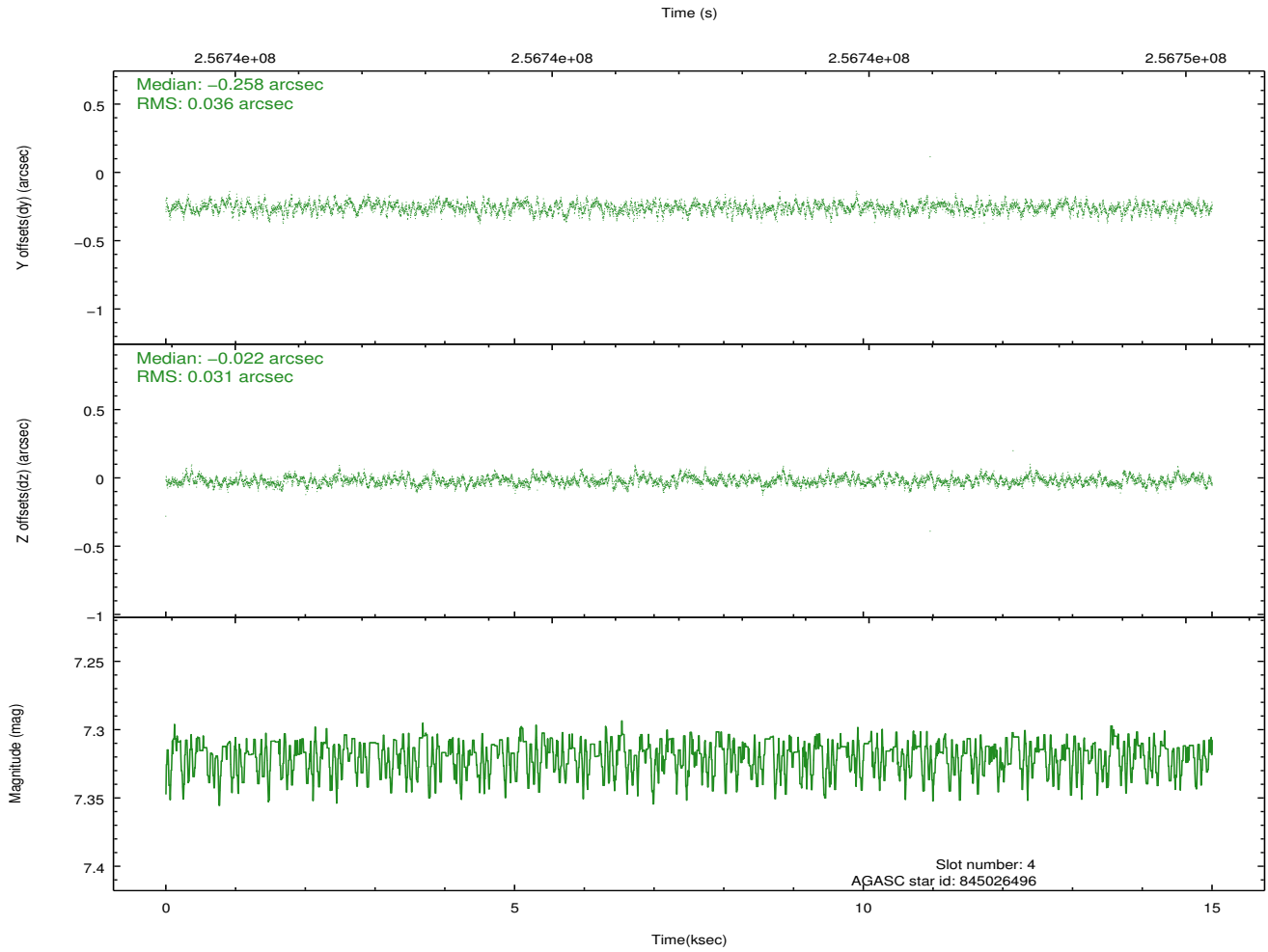
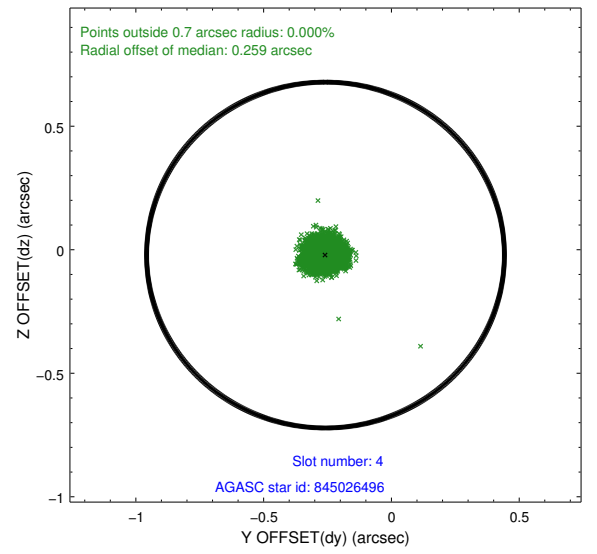
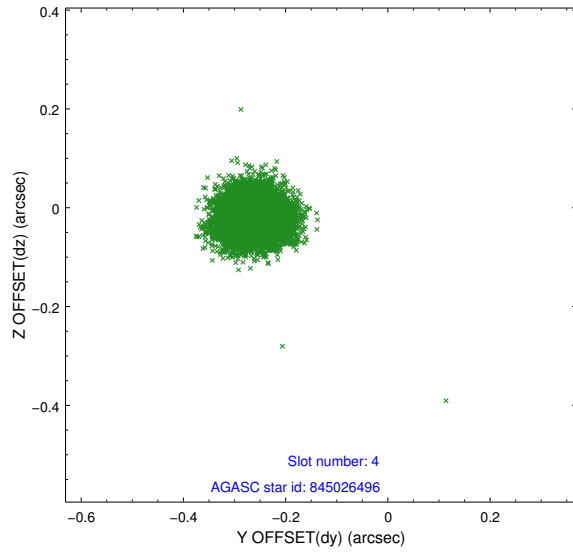
slot	status	id	mag	n_pts	med_dy	med_dz	dr1	dr2	ra	dec	mean_y	mean_z
0	FID	ACIS-S-2	7.10	3660	-0.015	-0.030	0.008	0.014	0.000000	0.000000	-760.21	-1733.67
1	FID	ACIS-S-4	7.20	3660	0.070	0.015	0.007	0.012	0.000000	0.000000	2153.02	174.53
2	FID	ACIS-S-5	7.23	3660	-0.086	0.023	0.011	0.020	0.000000	0.000000	-1812.73	168.57
3	GUIDE	845025400	8.54	7318	0.001	0.099	0.064	0.102	53.994832	-24.516792	-1360.66	973.15
4	GUIDE	845026496	7.32	7320	-0.258	-0.022	0.050	0.080	53.765658	-24.307320	-2198.50	315.86
5	GUIDE	845027080	8.98	7292	0.140	0.108	0.074	0.122	54.123172	-24.962599	282.89	1198.64
6	GUIDE	845030848	7.46	7319	-0.041	-0.080	0.052	0.086	53.109937	-24.616416	-1338.54	-1946.05
7	GUIDE	845421488	6.25	7319	0.159	-0.109	0.056	0.108	53.111135	-25.658502	2390.14	-2362.92

## 2.4 Star Slots

### 2.4.1 Slot 3

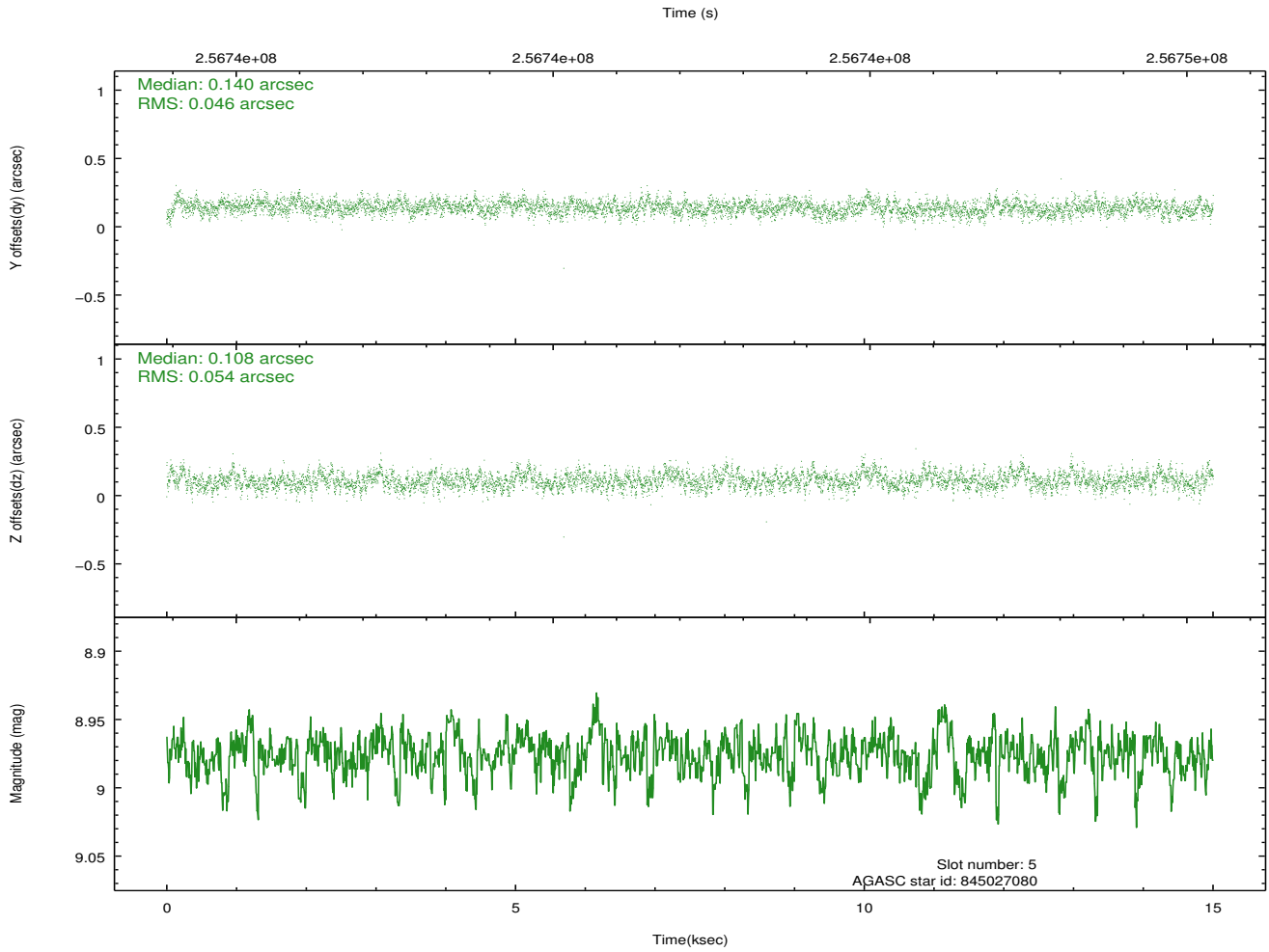
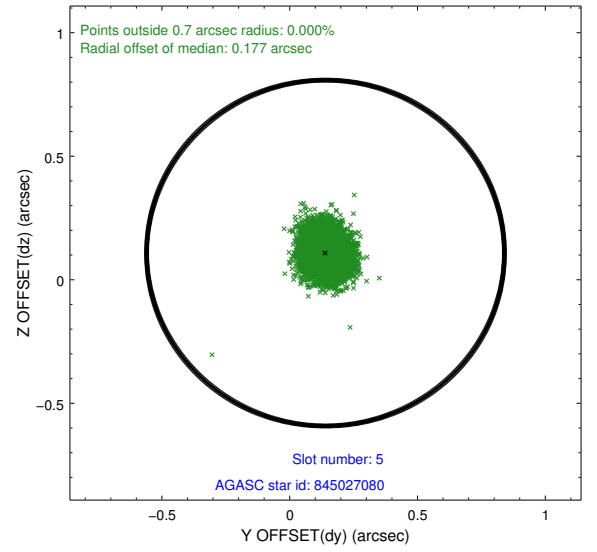
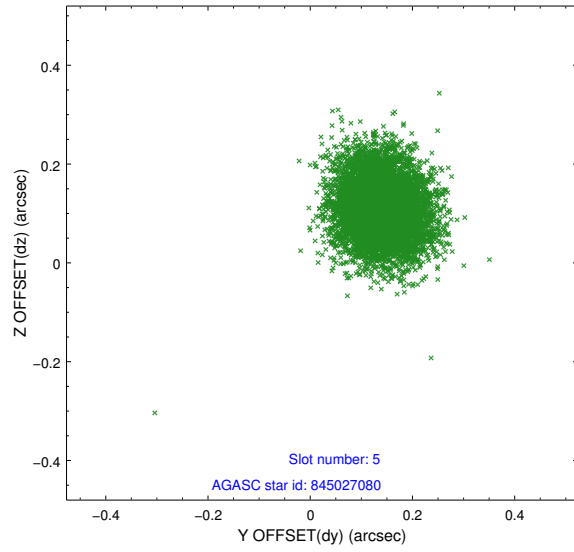


## 2.4.2 Slot 4

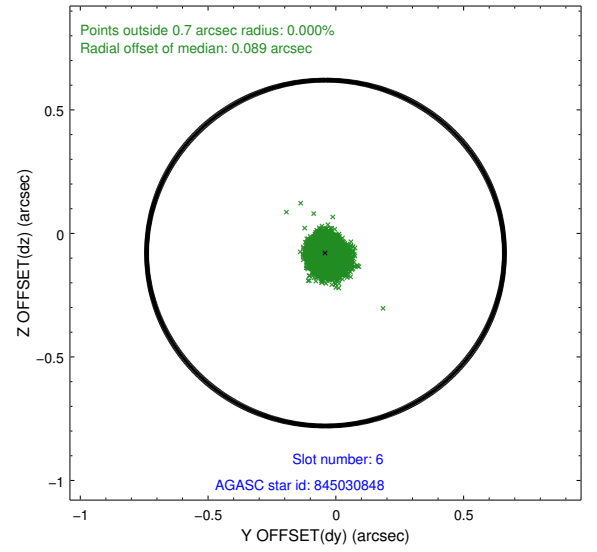
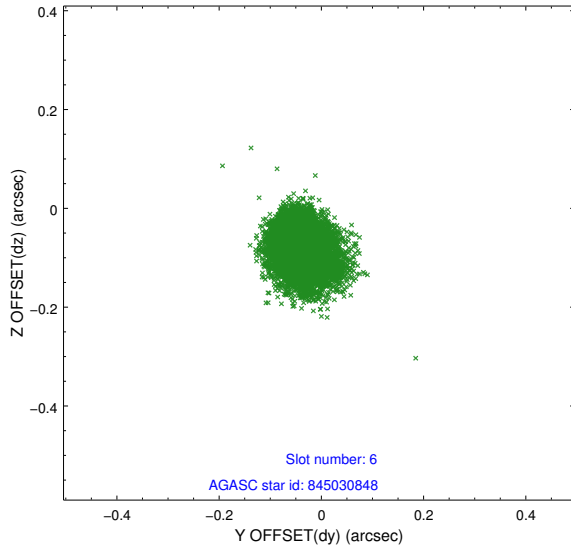




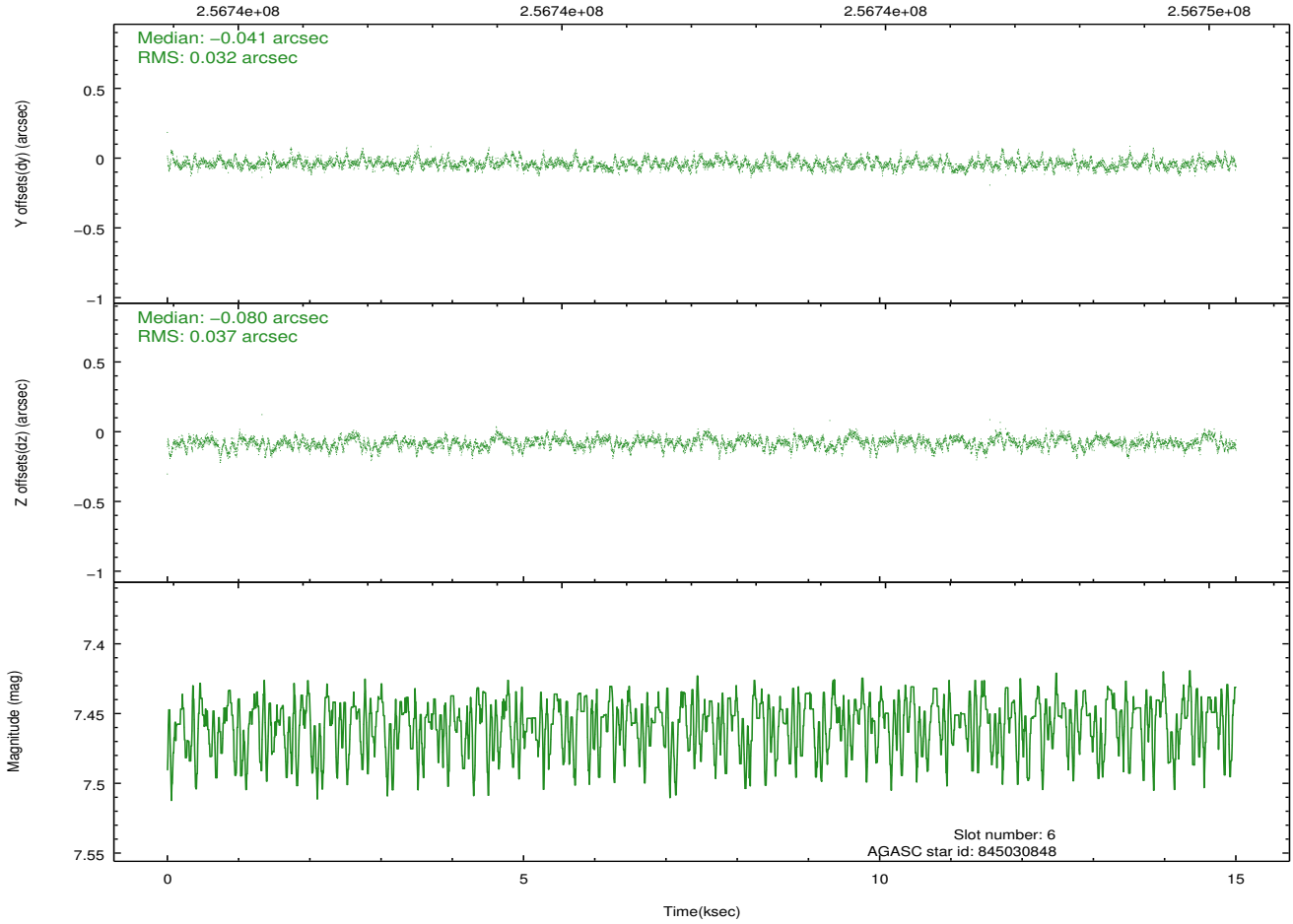
### 2.4.3 Slot 5



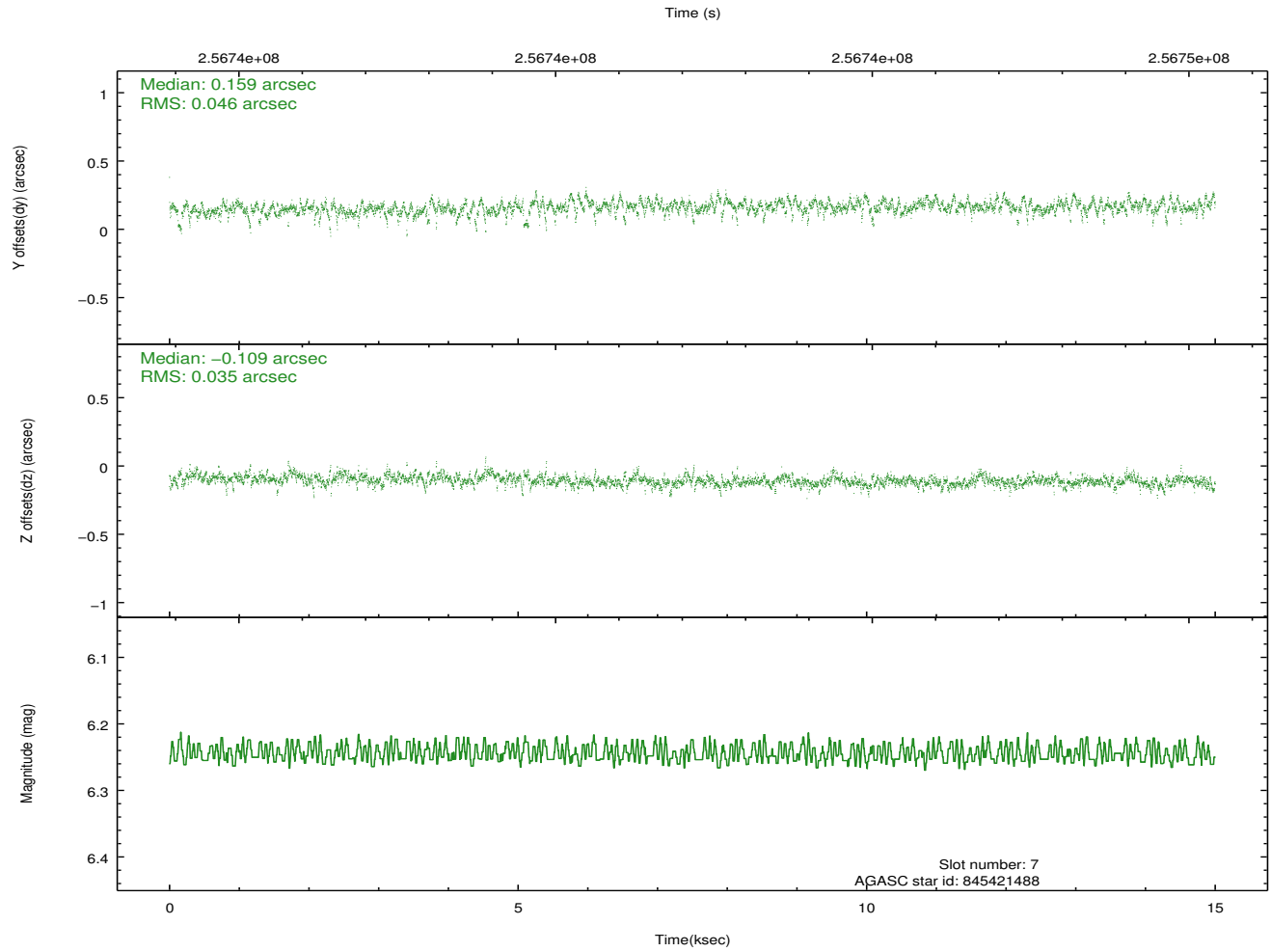
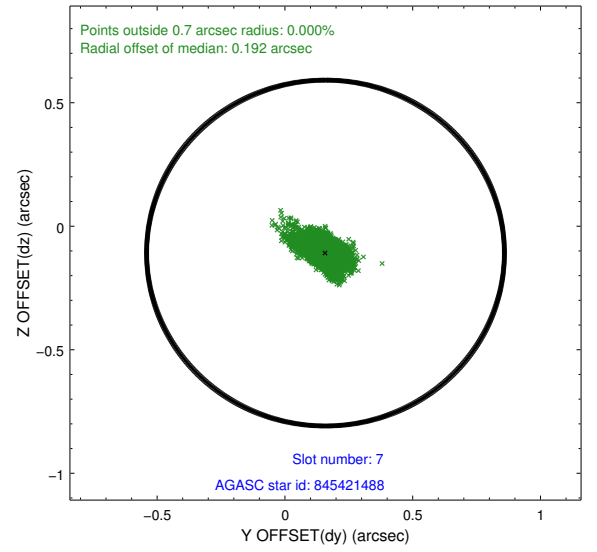
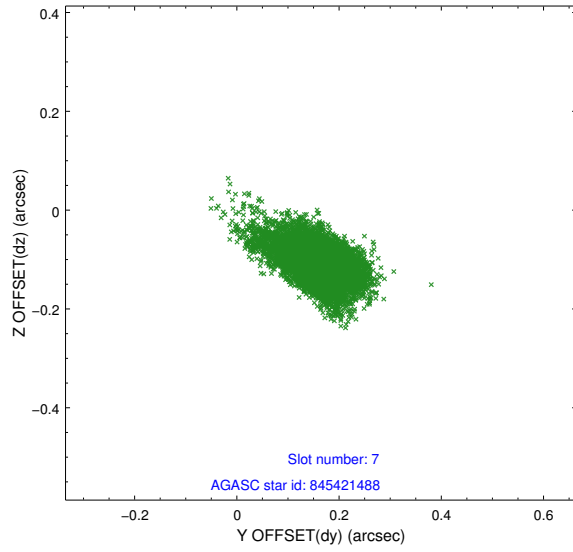
## 2.4.4 Slot 6



Time (s)

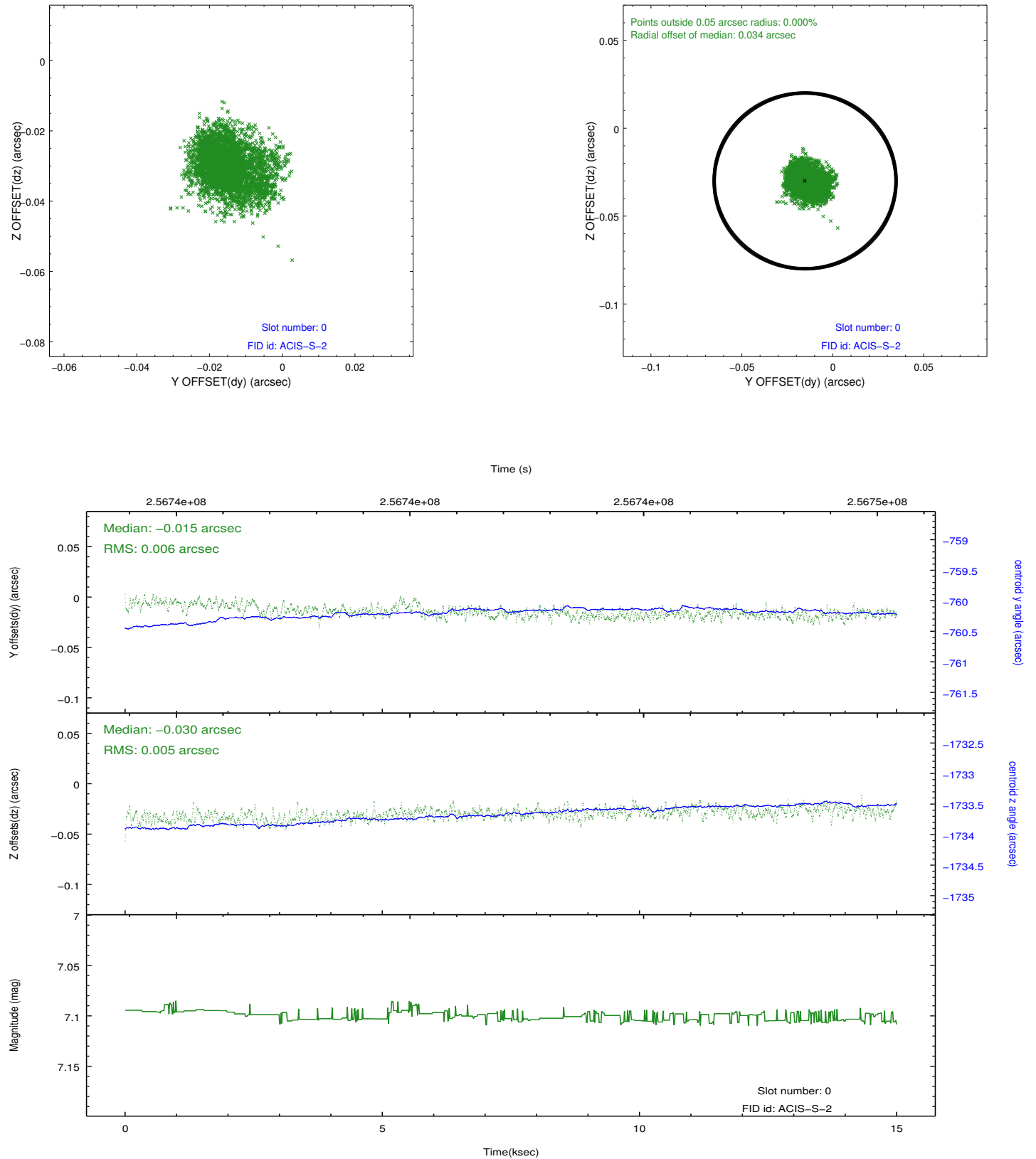


## 2.4.5 Slot 7

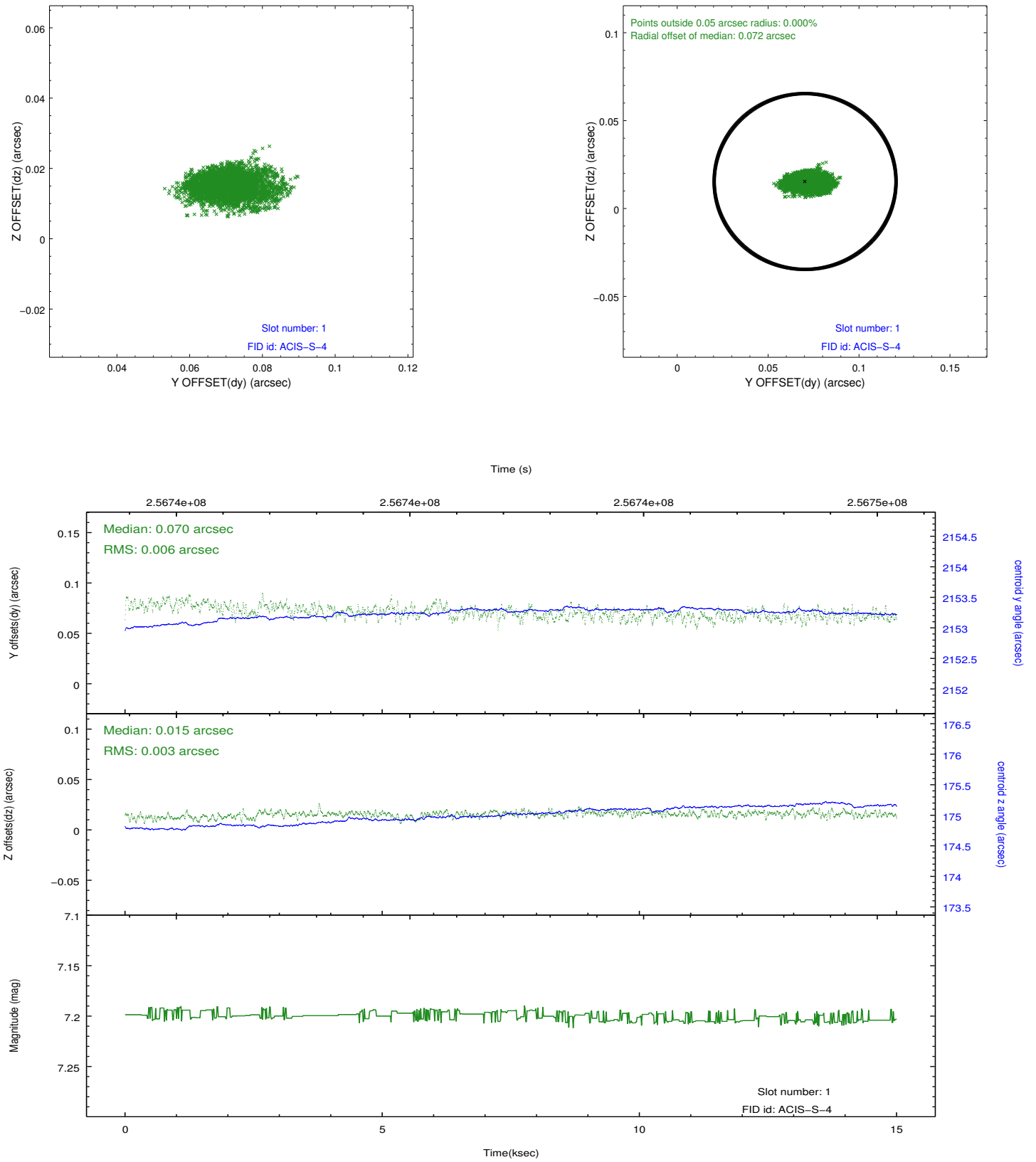


## 2.5 FID Slots

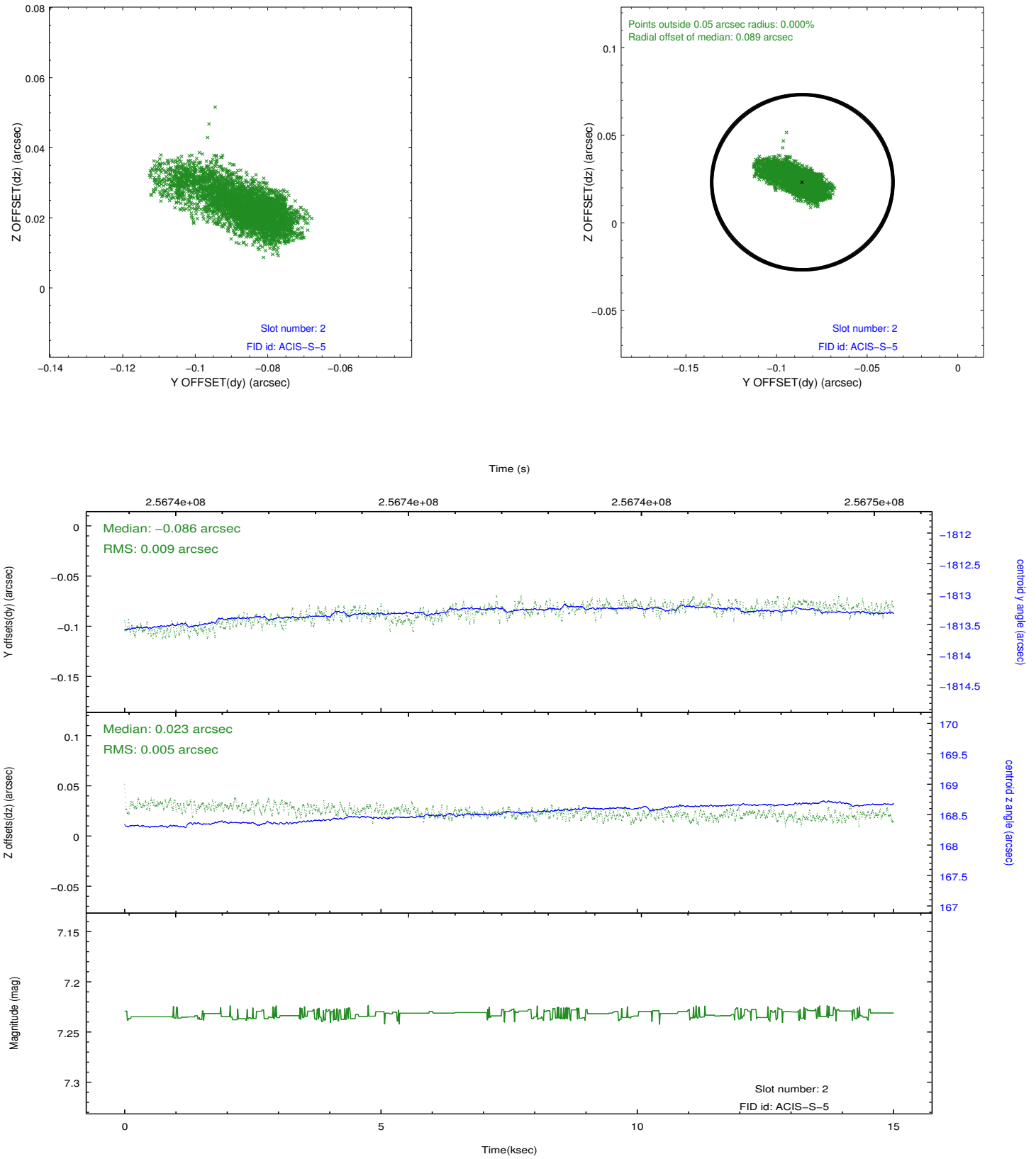
### 2.5.1 Slot 0



## 2.5.2 Slot 1



### 2.5.3 Slot 2



## A Summary

### A.1 Status

V&V Scientist	Jen Lauer
V&V Date (YYYY-MM-DD)	2012.03.27
V&V Edition	1
V&V Disposition and Status	OK
V&V Charge Time	14.9983999

### A.2 Comments