

# V&V Reference Report

## L2 ASCDS Version : 7.6.10

Observation 61387 - L2 Version 001  
Chandra X-Ray Center

L2 Processing Date : Jan 18 2007

## Contents

<b>1</b>	<b>Front</b>	<b>2</b>
<b>2</b>	<b>OBI</b>	<b>3</b>
2.1	OBI . . . . .	3
2.1.1	Images . . . . .	3
2.1.2	Bias . . . . .	3
2.1.3	Parameters . . . . .	4
2.1.4	Events . . . . .	4
2.2	Compared Parameters . . . . .	5
2.3	Star Slots . . . . .	6
2.4	FID Slots . . . . .	6
<b>A</b>	<b>Summary</b>	<b>7</b>
A.1	Status . . . . .	7
A.2	Comments . . . . .	7

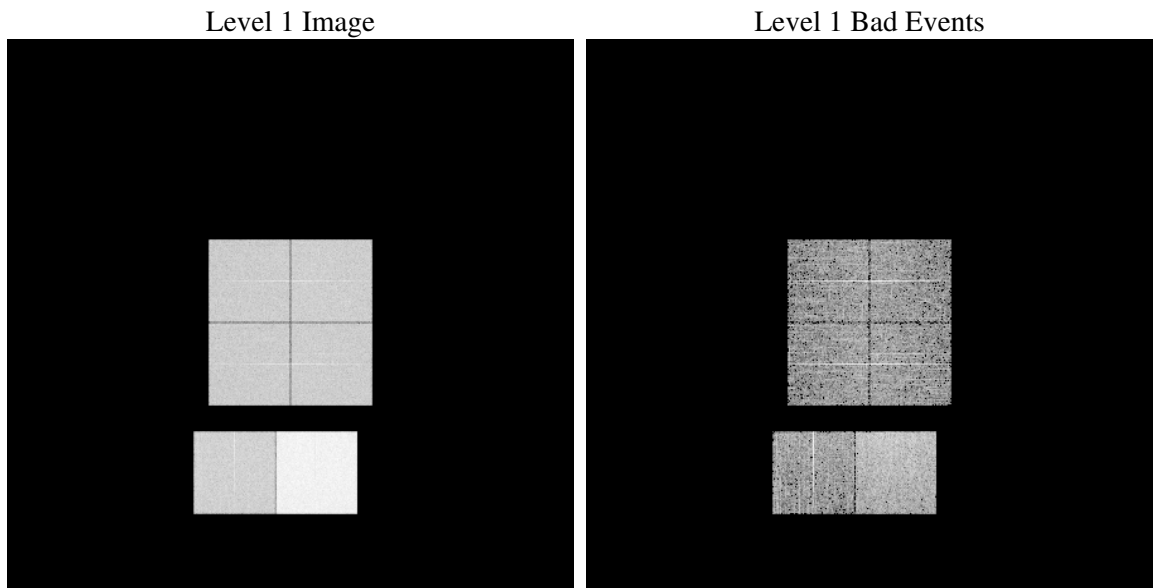
# 1 Front

seq_num	&#160
obs_id	61387
title	ACIS-012367 diagnostics
observer	CHANDRA engineering request/realtime commanding
object	&#160
dtcycle	0
cycle	P
ra_targ	0.0
dec_targ	0.0
ra_nom	334.0286404091
dec_nom	-56.023715836877
roll_nom	271.42462568544
revision	2
ontime	7541.300690636
livetime	7445.8082004651
ontime0	2851.6494467854
ontime1	3007.2587218434
ontime2	2790.1522054225
ontime3	2871.0137563199
ontime6	3098.0903801322
ontime7	7541.300690636
l2events	1220354

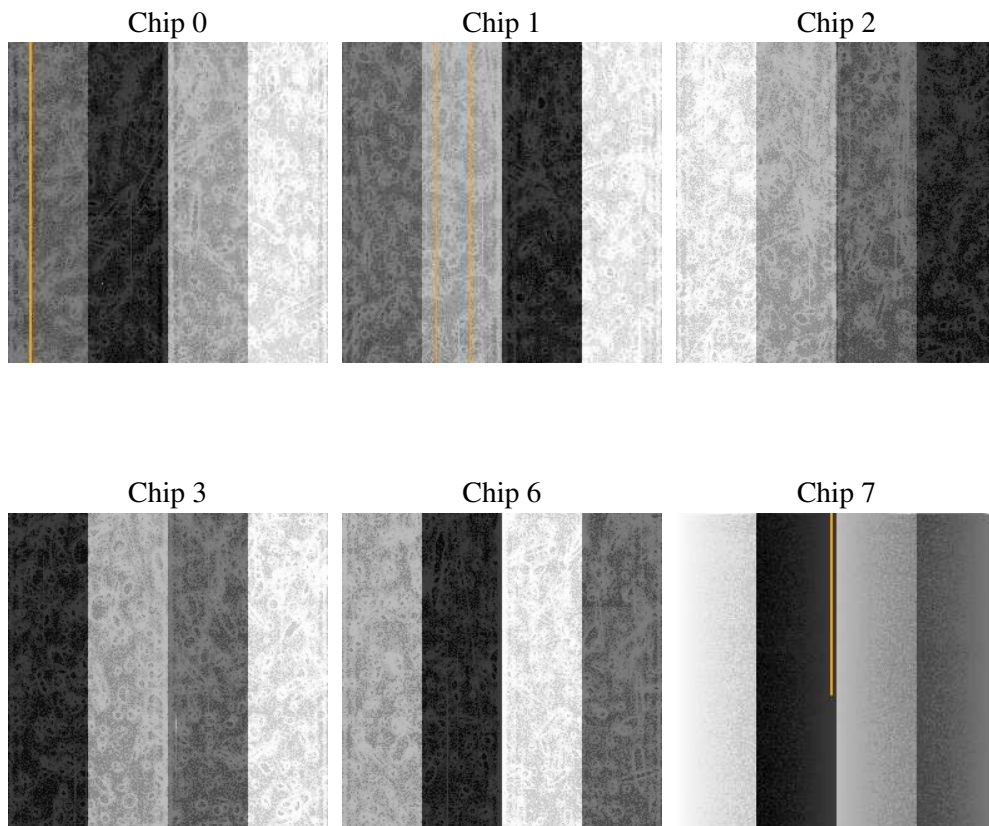
## 2 OBI

### 2.1 OBI

#### 2.1.1 Images



#### 2.1.2 Bias



### 2.1.3 Parameters

obi_num	0
ascdsver	7.6.10
caldsver	3.3.0
date	2007-01-18T09:28:02
revision	2

sched_exp_time	0.0
ontime	7541.300690636
ontime0	2851.6494467854
ontime1	3007.2587218434
ontime2	2790.1522054225
ontime3	2871.0137563199
ontime6	3098.0903801322
ontime7	7541.300690636
l1events	1421538

### 2.1.4 Events

	ccd 0	ccd 1	ccd 2	ccd 3	ccd 6	ccd 7
level 1 events	179903	189181	179405	184492	205515	483042
rejected events	20858	20762	21344	22222	24128	40994
rejected %	11%	10%	11%	12%	11%	8%

	ccd 0	ccd 1	ccd 2	ccd 3	ccd 6	ccd 7
grade 0 events	87531	92691	87926	90535	98784	112823
	48%	48%	49%	49%	48%	23%
grade 1 events	459	472	443	462	514	310
	0%	0%	0%	0%	0%	0%
grade 2 events	28424	29559	27812	28566	31498	98271
	15%	15%	15%	15%	15%	20%
grade 3 events	10192	10856	10152	10315	11206	45028
	5%	5%	5%	5%	5%	9%
grade 4 events	9944	10742	9753	10289	11270	44885
	5%	5%	5%	5%	5%	9%
grade 5 events	1499	1537	1428	1655	1826	8323
	0%	0%	0%	0%	0%	1%
grade 6 events	22954	24571	22418	22565	28629	141041
	12%	12%	12%	12%	13%	29%
grade 7 events	18900	18753	19473	20105	21788	32361
	10%	9%	10%	10%	10%	6%

## 2.2 Compared Parameters

Parameter	Planned	Actual	Parameter	Planned	Actual
Instrument	ACIS	ACIS	Obspar format version number	6	6
Detector	ACIS-012367	ACIS-012367	Obspar file type	PREDICTED	ACTUAL
Grating	NONE	NONE	Obspar update status	NONE	UPDATED
Data mode	FAINT	FAINT	On-chip summing requested	N	N
Observation mode	SECONDARY	SECONDARY	Subarray requested	NONE	NONE
Pointing RA	0	334.0286404090953	Alternating exposures requested	N	N
Pointing Dec	0	-56.02371583687728	Primary exposure time	0.000000	3.2
Pointing Roll	0.0	271.4246256854381			
SIM focus pos (mm)	-0.782348	-0.6828225247311905			
SIM defocus (mm)	0	0.8505141146731063			
SIM translation stage pos (mm)	-233.592463	250.466033080201			
SIM translation stage offset (mm)	0	-0.01005468664627074			
Observation start time	124501489.273	124501488.50503			
Observation start date	2001-12-11T23:44:49	2001-12-11T23:44:48			
Observation end time	124534559.875	124534559.10635			
Observation end date	2001-12-12T08:56:00	2001-12-12T08:55:59			
Read mode	TIMED	TIMED			

## **2.3 Star Slots**

## **2.4 FID Slots**

## A Summary

### A.1 Status

V&V Scientist	Jen Lauer
V&V Date (YYYY-MM-DD)	2007.01.18
V&V Edition	1
V&V Disposition and Status	OK
V&V Charge Time	7.54130069

### A.2 Comments