

V&V Reference Report

L2 ASCDS Version : 7.6.7.1

Observation 5437 - L2 Version 002
Chandra X-Ray Center

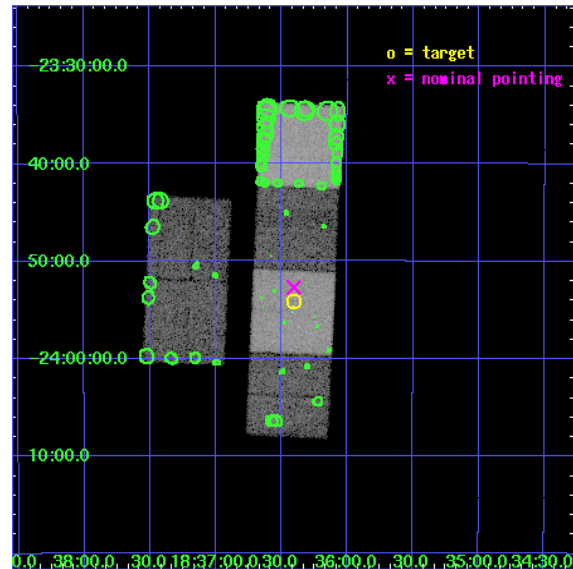
L2 Processing Date : Mar 8 2006

Contents

1	Front	2
2	OBI	3
2.1	OBI	3
2.1.1	Images	3
2.1.2	Bias	3
2.1.3	Parameters	4
2.1.4	Events	4
2.2	Compared Parameters	5
2.3	Aspect	6
2.4	Star Slots	9
2.4.1	Slot 3	9
2.4.2	Slot 4	10
2.4.3	Slot 5	11
2.4.4	Slot 6	12
2.4.5	Slot 7	13
2.5	FID Slots	14
2.5.1	Slot 0	14
2.5.2	Slot 1	15
2.5.3	Slot 2	16
3	Point Sources	17
A	Summary	18
A.1	Status	18
A.2	Comments	18

1 Front

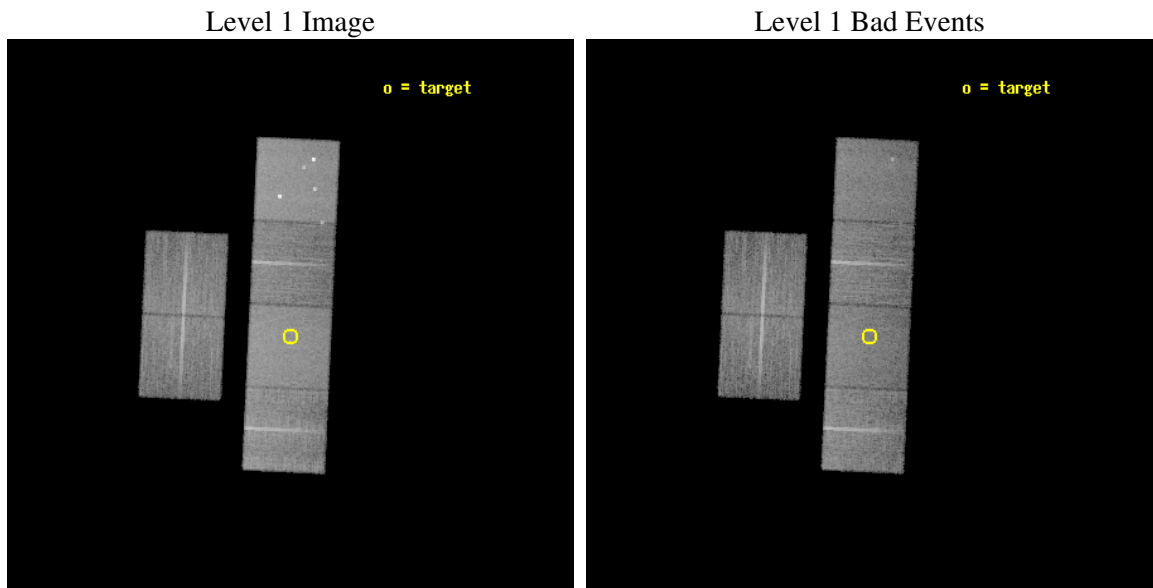
seq_num	300153
obs_id	5437
title	A Uniform Study of Globular Cluster X-ray Sources: the Keys to Cluster Dynamical Evolution
observer	Prof. Walter Lewin
object	NGC 6656
dtcycle	0
cycle	P
ra_targ	279.100833
dec_targ	-23.903333
ra_nom	279.10144780459
dec_nom	-23.878438107476
roll_nom	92.649628905767
revision	2
ontime	16022.399940312
livetime	15819.514664737
ontime2	16022.399940312
ontime3	16022.399940312
ontime5	16022.399940312
ontime6	16022.399940312
ontime7	16022.399940312
ontime8	16022.399940312
l2events	193219



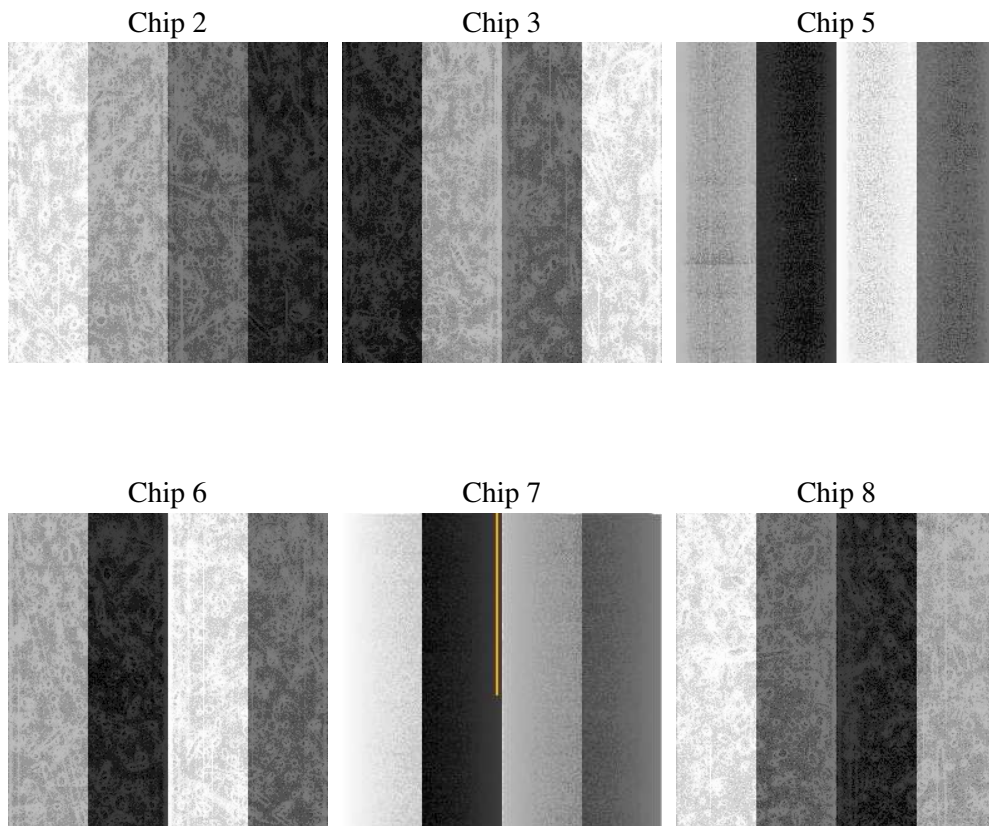
2 OBI

2.1 OBI

2.1.1 Images



2.1.2 Bias



2.1.3 Parameters

obi_num	0
ascdsver	7.6.7.1
caldbver	3.2.1
date	2006-03-08T10:06:24
revision	2

sched_exp_time	16000.000000
ontime	16026.799200654
ontime2	16026.799200654
ontime3	16026.799200654
ontime5	16026.799200654
ontime6	16026.799200654
ontime7	16026.799200654
ontime8	16026.799200654
l1events	859146

2.1.4 Events

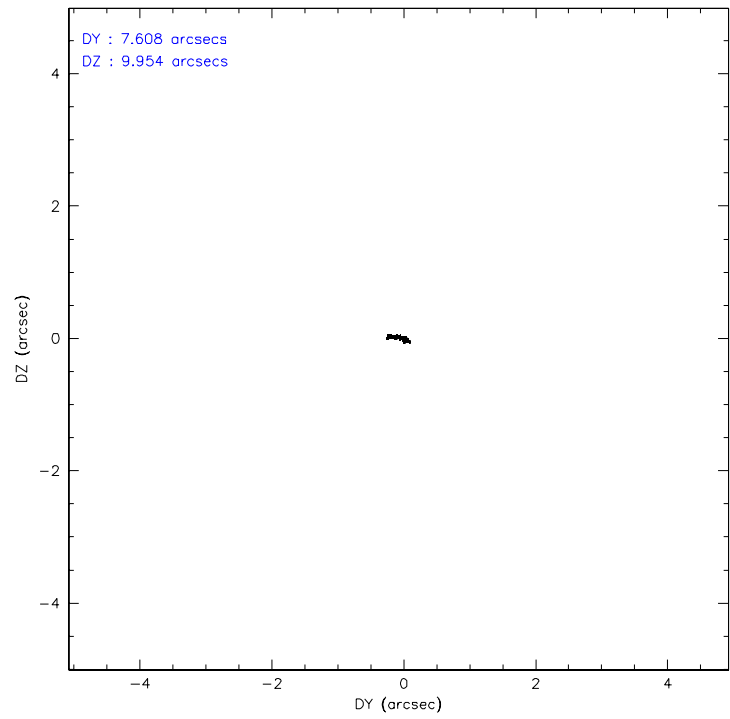
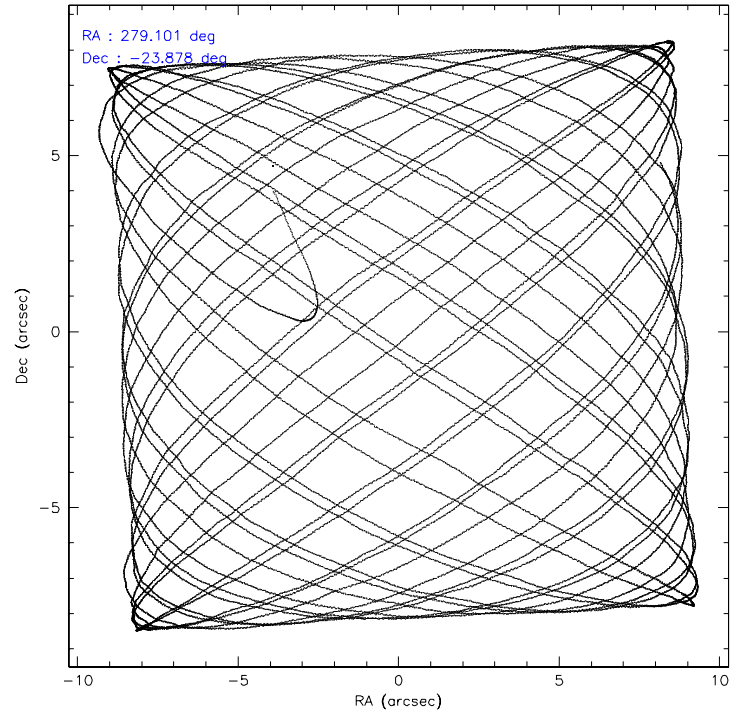
	ccd 2	ccd 3	ccd 5	ccd 6	ccd 7	ccd 8
level 1 events	118952	115490	186923	119977	165772	152032
rejected events	104424	100547	100681	104289	101711	118327
rejected %	87%	87%	53%	86%	61%	77%

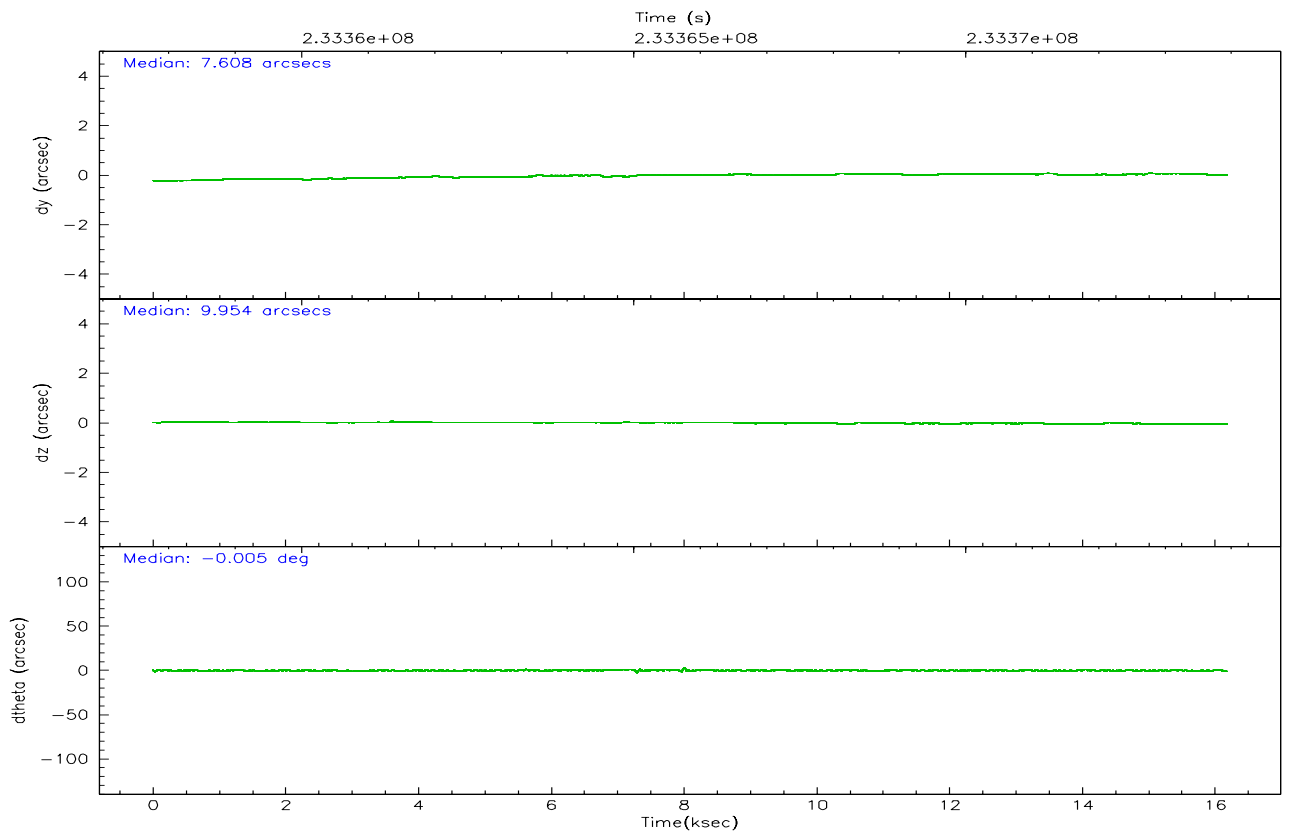
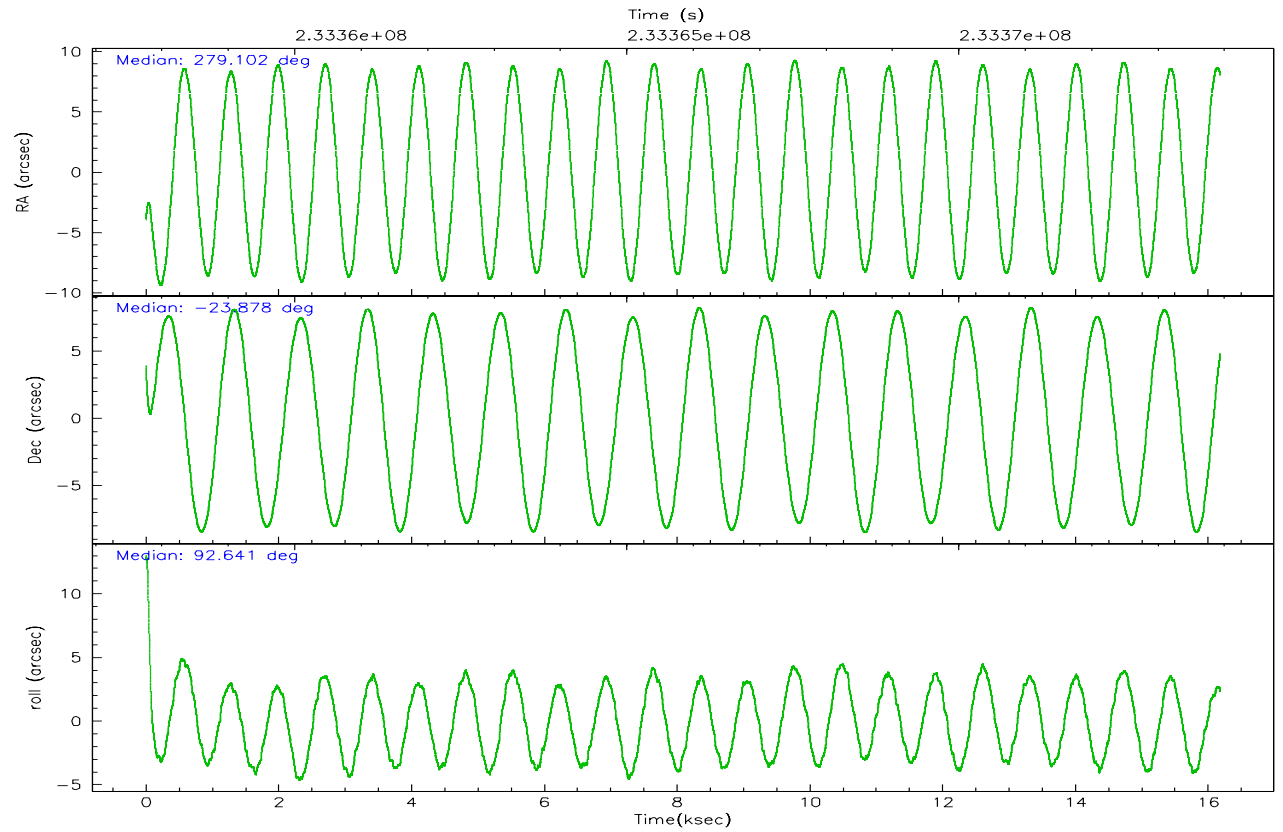
	ccd 2	ccd 3	ccd 5	ccd 6	ccd 7	ccd 8
grade 0 events	6773	6921	11017	6724	4265	11424
	5%	5%	5%	5%	2%	7%
grade 1 events	88	73	588	60	107	103
	0%	0%	0%	0%	0%	0%
grade 2 events	2904	2779	25902	3116	16231	7211
	2%	2%	13%	2%	9%	4%
grade 3 events	1306	1348	1820	1454	3262	3420
	1%	1%	0%	1%	1%	2%
grade 4 events	1242	1415	1729	1395	3180	3191
	1%	1%	0%	1%	1%	2%
grade 5 events	4756	5271	8550	5509	10763	7333
	3%	4%	4%	4%	6%	4%
grade 6 events	2306	2485	45789	3001	37139	8460
	1%	2%	24%	2%	22%	5%
grade 7 events	99577	95198	91528	98718	90825	110890
	83%	82%	48%	82%	54%	72%

2.2 Compared Parameters

Parameter	Planned	Actual	Parameter	Planned	Actual
Instrument	ACIS	ACIS	Obspar format version number	6	6
Detector	ACIS-235678	ACIS-235678	Obspar file type	PREDICTED	ACTUAL
Grating	NONE	NONE	Obspar update status	NONE	UPDATED
Data mode	FAINT	FAINT	On-chip summing requested	N	N
Observation mode	POINTING	POINTING	Subarray requested	NONE	NONE
Pointing RA	279.117885	279.1014478045918	Alternating exposures requested	N	N
Pointing Dec	-23.901148	-23.87843810747621	Primary exposure time	0.000000	3.2
Pointing Roll	92.499640	92.64962890576678			
SIM focus pos (mm)	-0.684267	-0.6828225247311905			
SIM defocus (mm)	0	0.001444936568705701			
SIM translation stage pos (mm)	-190.132523	-190.1400660498719			
SIM translation stage offset (mm)	0	0.00754346686406393			
Observation start time	233357941.184000	233356947.25062			
Observation start date	2005-05-24T21:37:57	2005-05-24T21:22:27			
Observation end time	233373941.184000	233374360.97641			
Observation end date	2005-05-25T02:04:37	2005-05-25T02:12:40			
Read mode	TIMED	TIMED			

2.3 Aspect



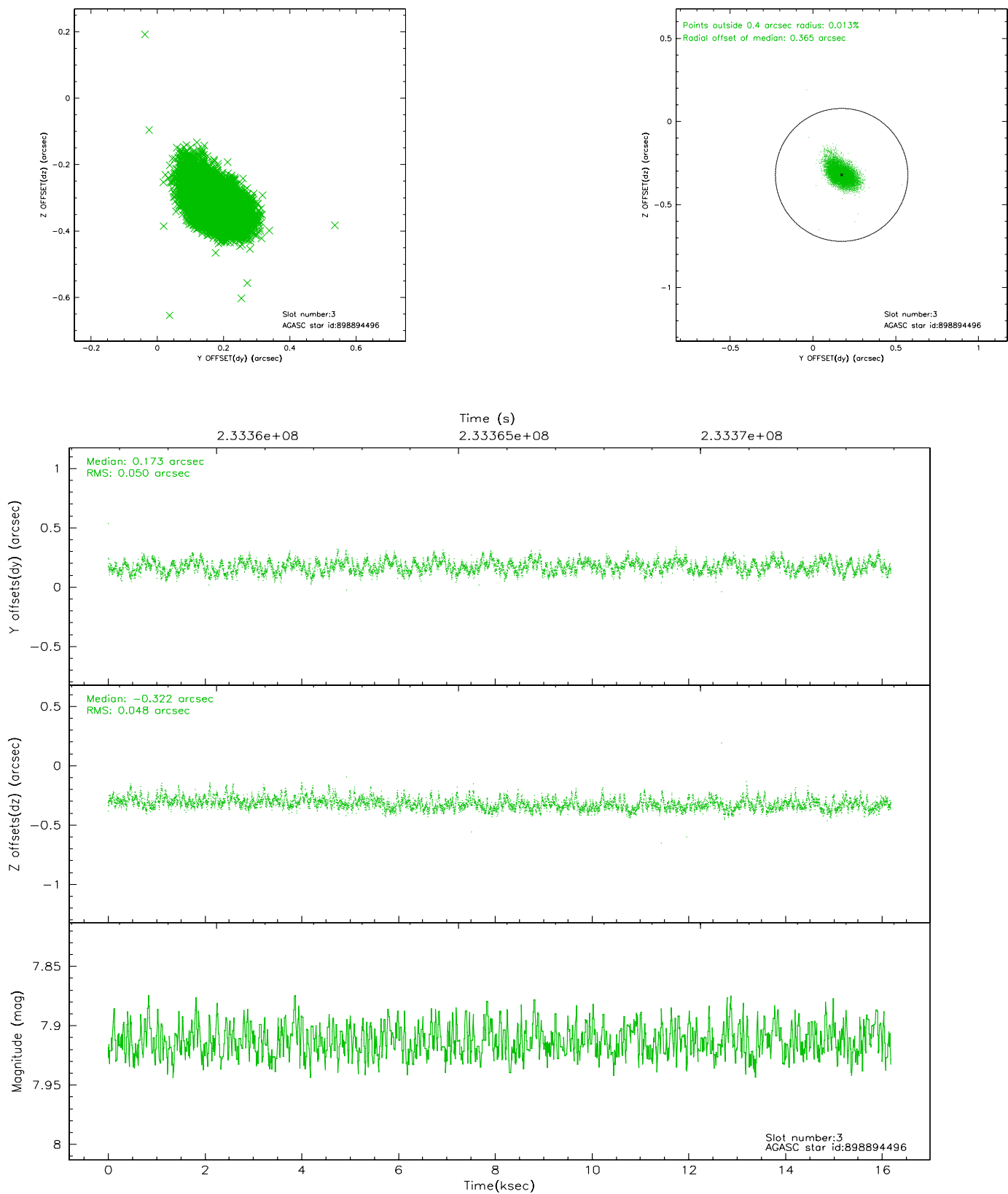


Slot Statistics

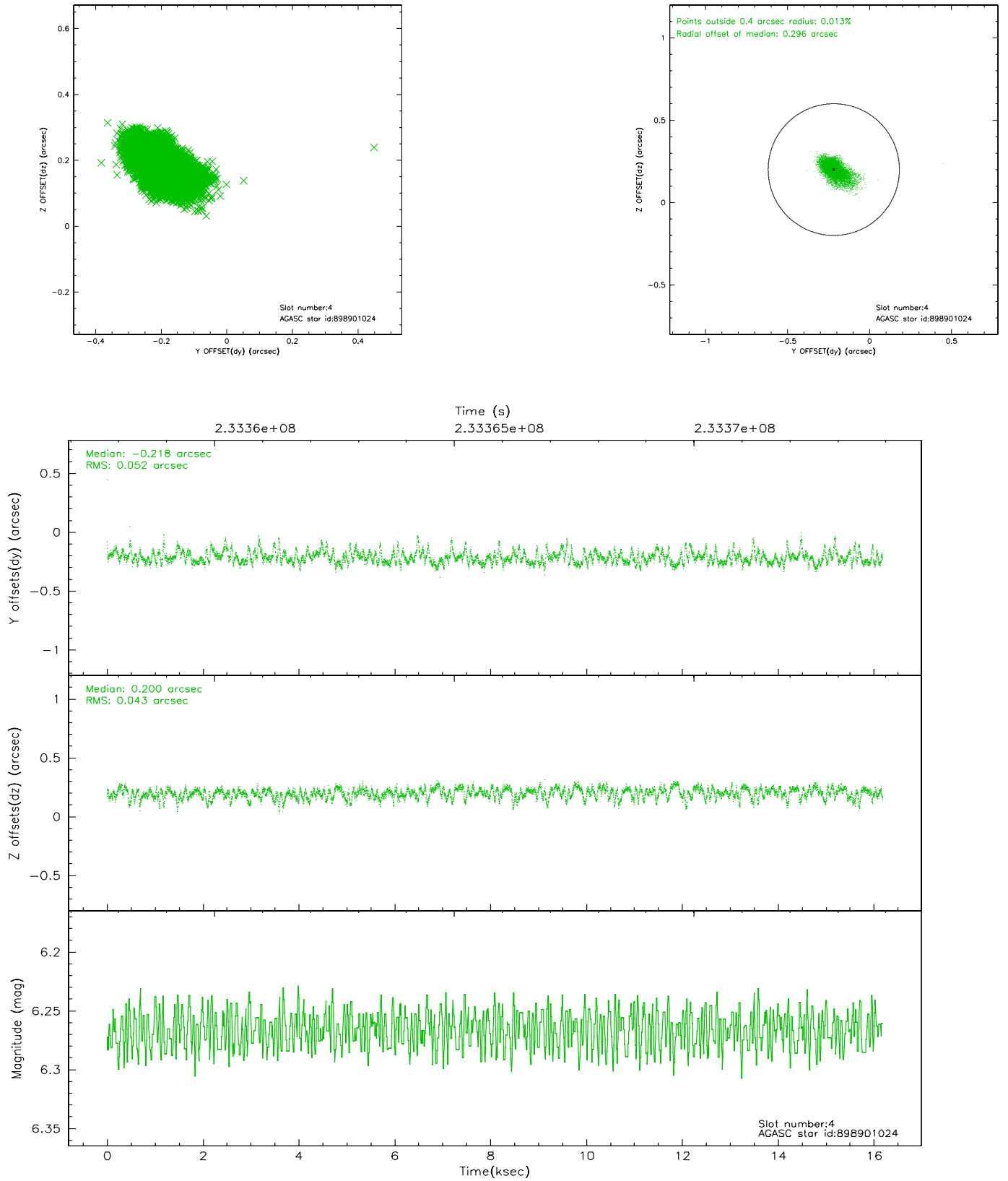
slot	status	id	mag	n_pts	med_dy	med_dz	dr1	dr2	ra	dec	mean_y	mean_z
0	FID	ACIS-S-2	7.10	3947	-0.037	-0.011	0.013	0.024	0.000000	0.000000	-760.35	-1731.22
1	FID	ACIS-S-4	7.21	3947	0.038	0.023	0.010	0.016	0.000000	0.000000	2152.85	177.07
2	FID	ACIS-S-6	7.35	3947	-0.027	-0.003	0.009	0.015	0.000000	0.000000	401.95	814.71
3	GUIDE	898894496	7.91	7894	0.173	-0.322	0.072	0.120	278.448294	-24.123316	-708.32	2232.70
4	GUIDE	898901024	6.26	7895	-0.218	0.200	0.066	0.124	279.627976	-23.504894	1348.84	-1743.72
5	GUIDE	898912832	8.07	7895	-0.142	0.091	0.056	0.092	279.543010	-23.718911	592.63	-1428.32
6	GUIDE	898912936	8.19	7894	-0.084	0.186	0.076	0.120	279.459103	-23.396807	1763.82	-1205.04
7	GUIDE	899421408	8.21	7892	0.268	-0.152	0.065	0.108	279.031195	-24.436485	-1912.47	367.43

2.4 Star Slots

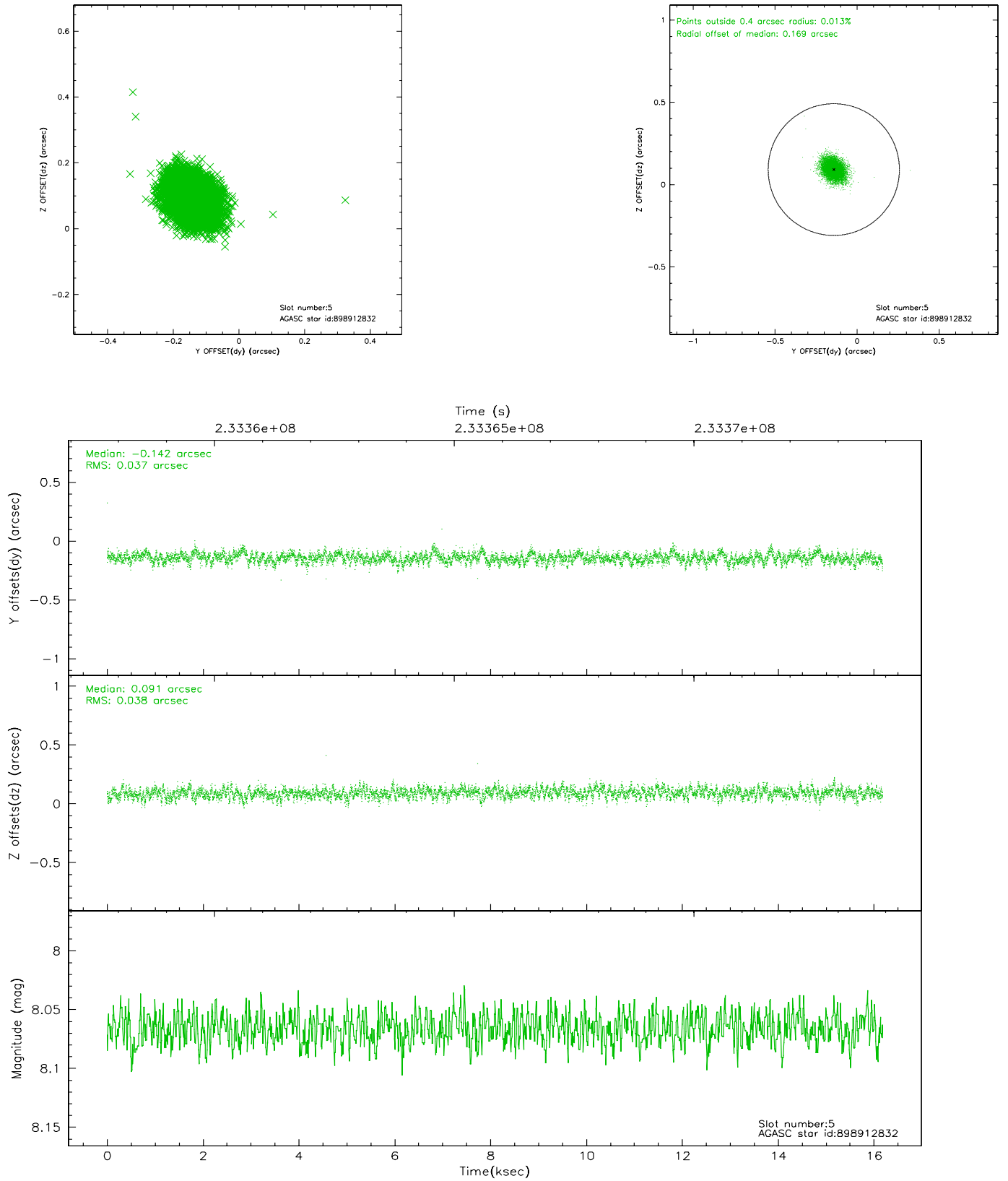
2.4.1 Slot 3



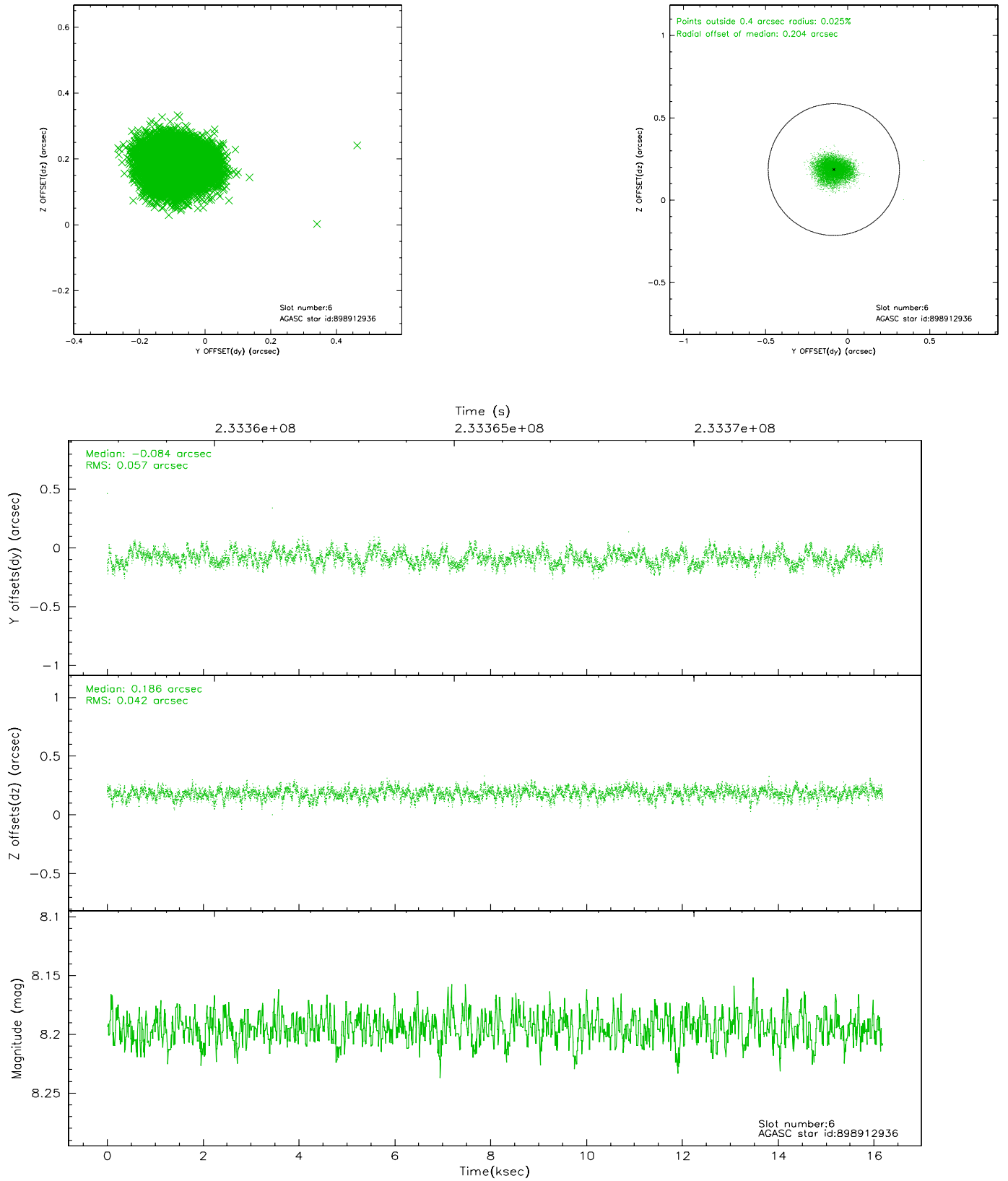
2.4.2 Slot 4



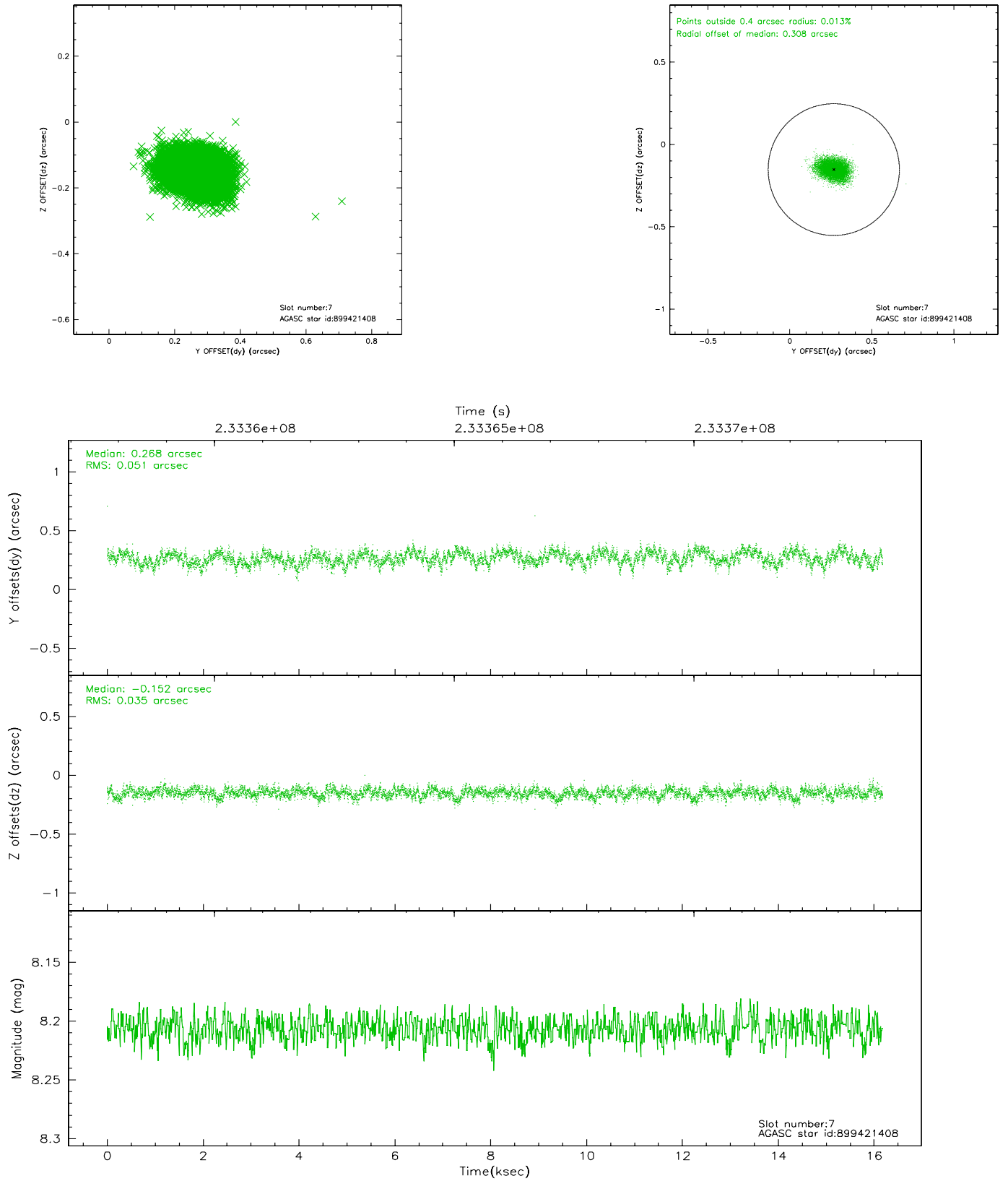
2.4.3 Slot 5



2.4.4 Slot 6

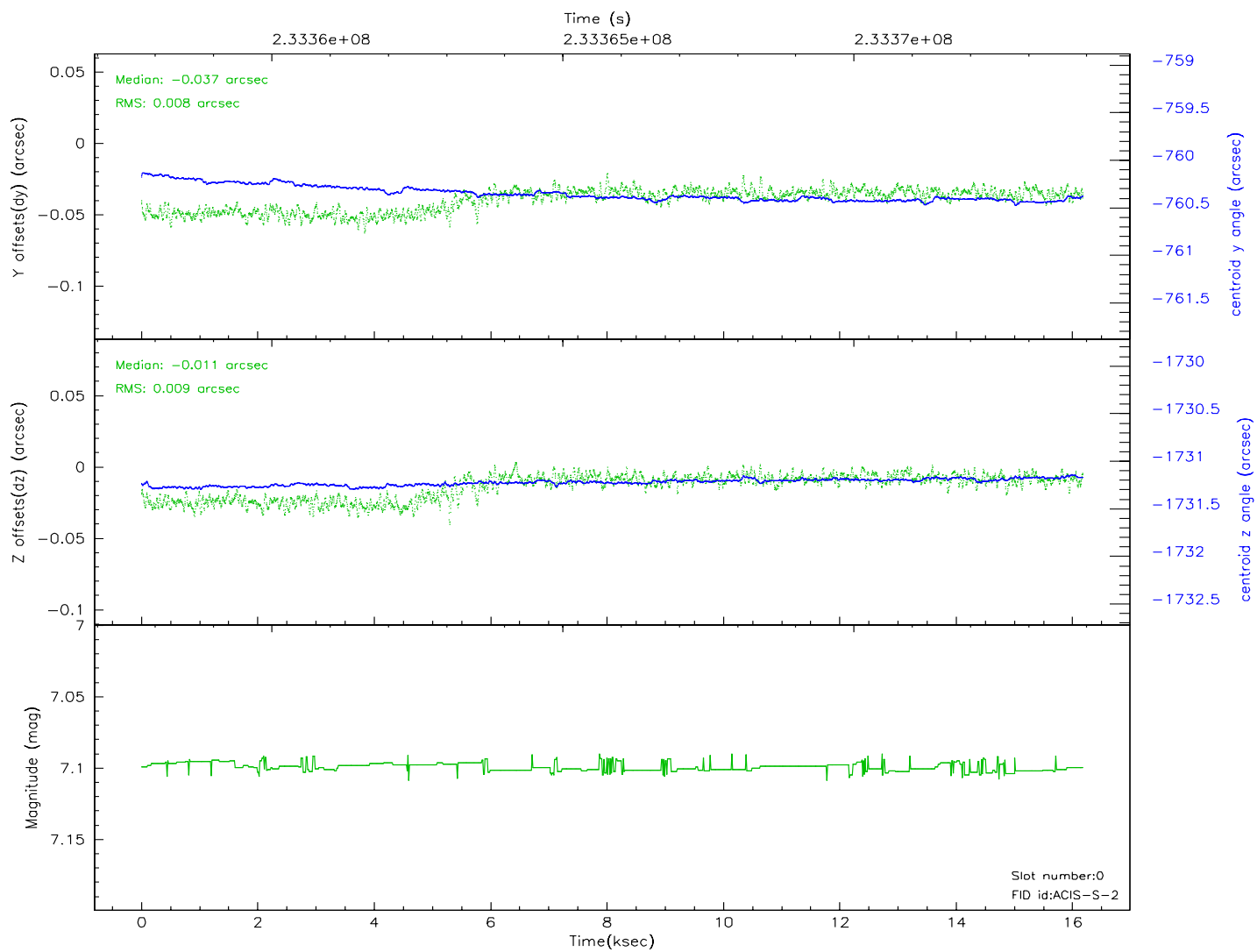
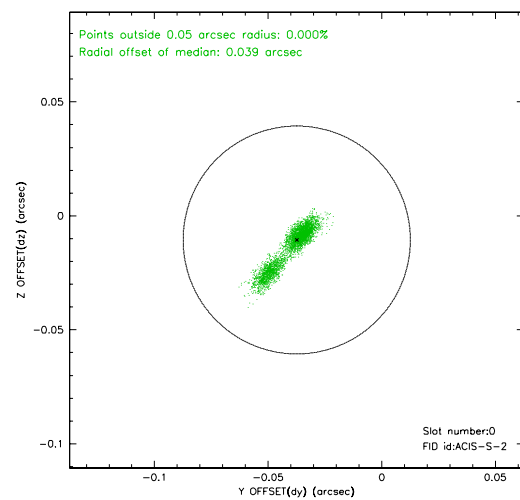
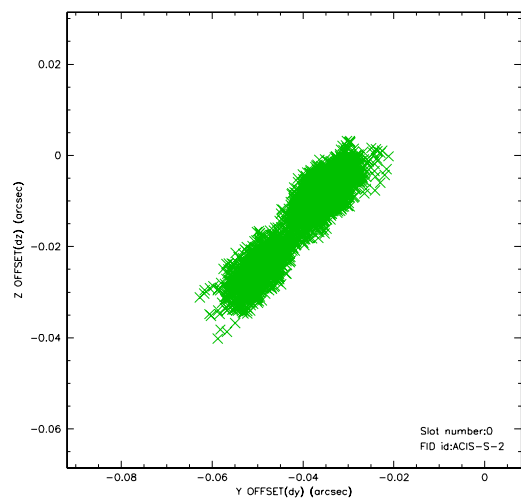


2.4.5 Slot 7

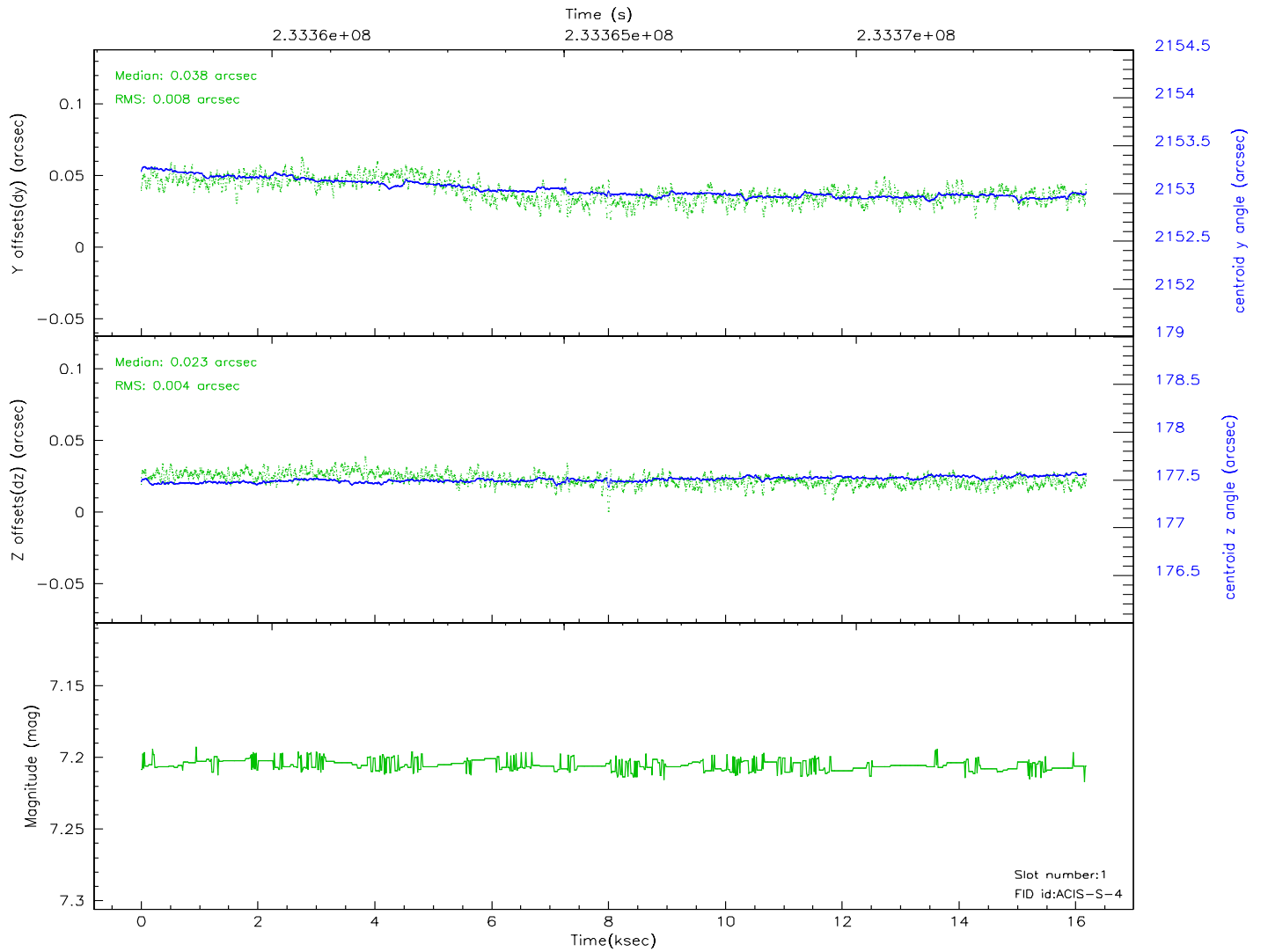
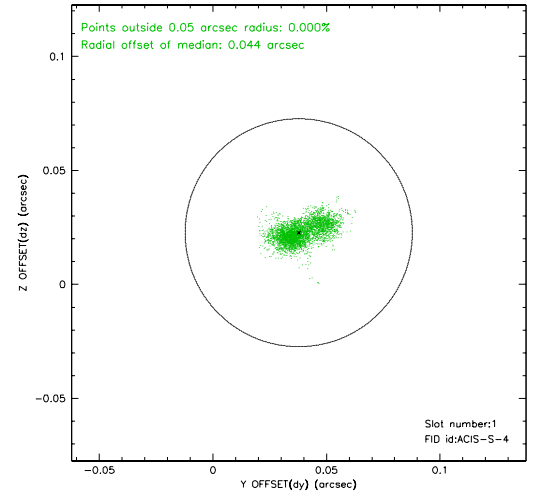
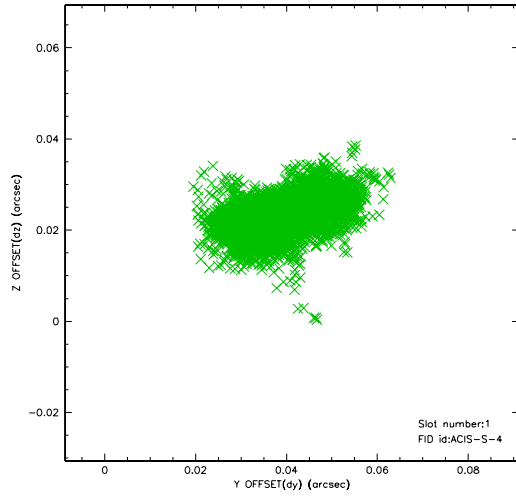


2.5 FID Slots

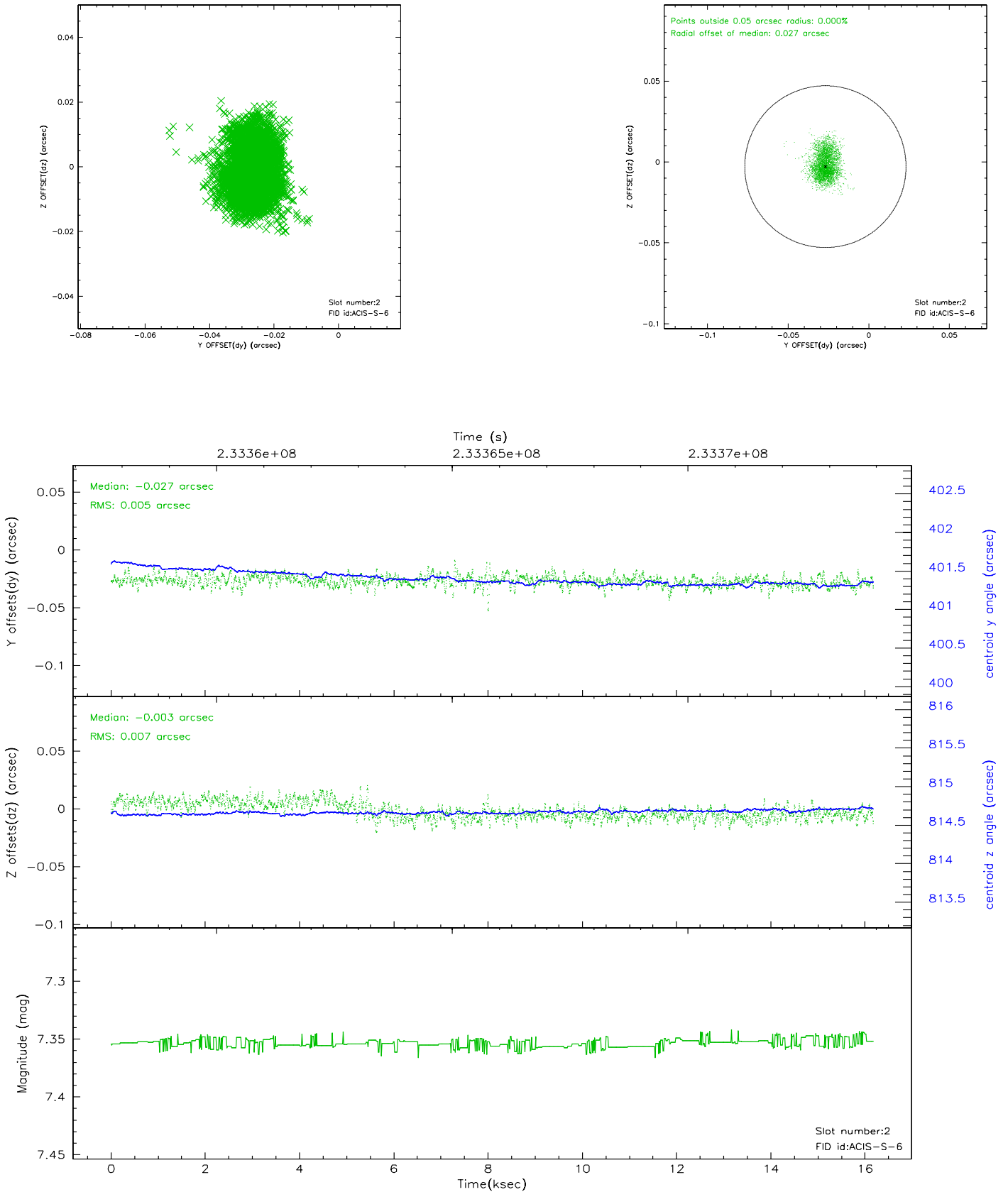
2.5.1 Slot 0



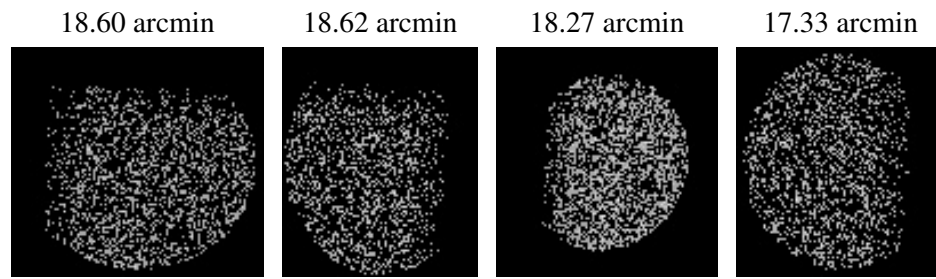
2.5.2 Slot 1



2.5.3 Slot 2



3 Point Sources



A Summary

A.1 Status

V&V Scientist	Jen Lauer
V&V Date (YYYY-MM-DD)	2006.03.08
V&V Edition	1
V&V Disposition and Status	OK
V&V Charge Time	16.02239

A.2 Comments