

# V&V Reference Report

## L2 ASCDS Version : 8.4.5

Observation 507 - L2 Version 4  
Chandra X-Ray Center

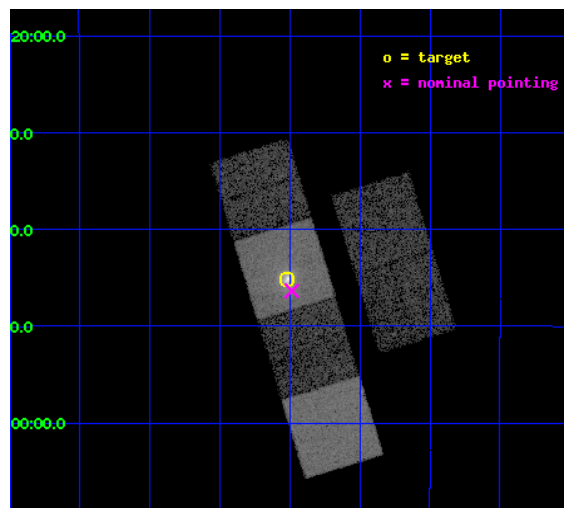
L2 Processing Date : Aug 26 2012

## Contents

<b>1</b>	<b>Front</b>	<b>2</b>
<b>2</b>	<b>OBI</b>	<b>3</b>
2.1	OBI . . . . .	3
2.1.1	Images . . . . .	3
2.1.2	Bias . . . . .	3
2.1.3	Parameters . . . . .	4
2.1.4	Events . . . . .	4
2.2	Compared Parameters . . . . .	5
2.3	Aspect . . . . .	6
2.4	Star Slots . . . . .	9
2.4.1	Slot 3 . . . . .	9
2.4.2	Slot 4 . . . . .	10
2.4.3	Slot 5 . . . . .	11
2.4.4	Slot 6 . . . . .	12
2.4.5	Slot 7 . . . . .	13
2.5	FID Slots . . . . .	14
2.5.1	Slot 0 . . . . .	14
2.5.2	Slot 1 . . . . .	15
2.5.3	Slot 2 . . . . .	16
<b>A</b>	<b>Summary</b>	<b>17</b>
A.1	Status . . . . .	17
A.2	Comments . . . . .	17

# 1 Front

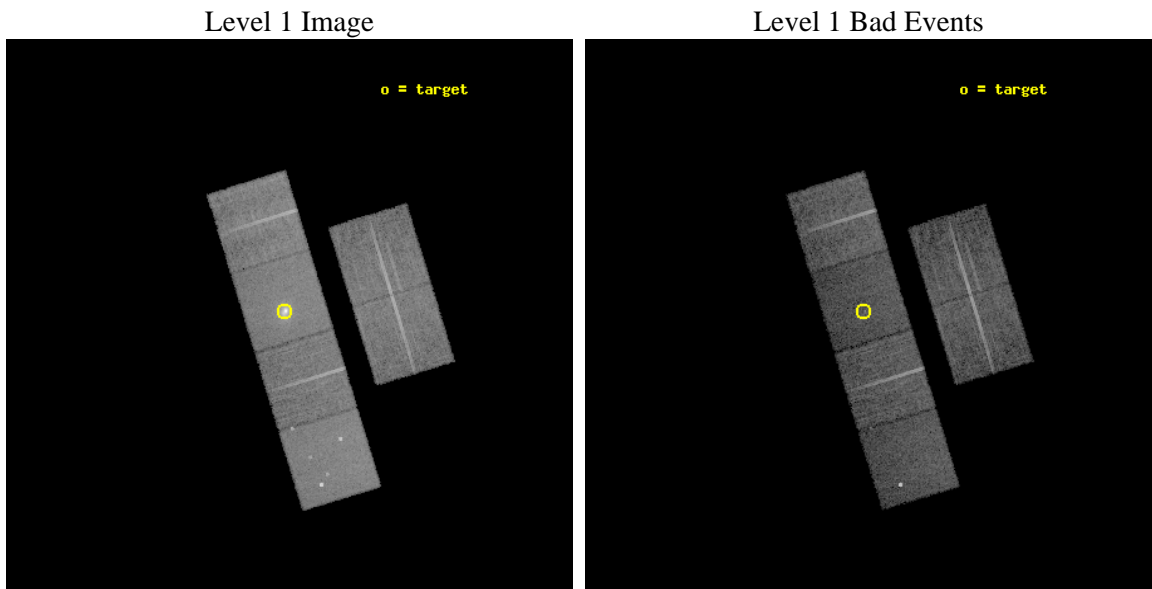
seq_num	800015	Sequence number
obs_id	507	Observation id
title	THE MASSIVE COOLING FLOW IN RXJ1347-114	Proposal title
observer	Professor Andrew Fabian	Principal investigator
object	RX J1347-114	Source name
dtcycle	0	&#160
cycle	P	events from which exps? Prim/Second/Both
ra_targ	206.879167	Observer's specified target RA [deg]
dec_targ	-11.753056	Observer's specified target Dec [deg]
ra_nom	206.87102431406	Nominal RA [deg]
dec_nom	-11.772616884768	Nominal Dec [deg]
roll_nom	252.93497822031	Nominal Roll [deg]
revision	4	Processing version of data
ontime	10124.426065505	Sum of GTIs [s]
livetime	9996.2244864657	Livetime [s]
ontime2	10121.226135284	Sum of GTIs [s]
ontime3	10124.30294551	Sum of GTIs [s]
ontime5	10124.385045409	Sum of GTIs [s]
ontime6	10124.343985513	Sum of GTIs [s]
ontime7	10124.426065505	Sum of GTIs [s]
ontime8	10121.020835564	Sum of GTIs [s]
l2events	126001	Number of level 2 events



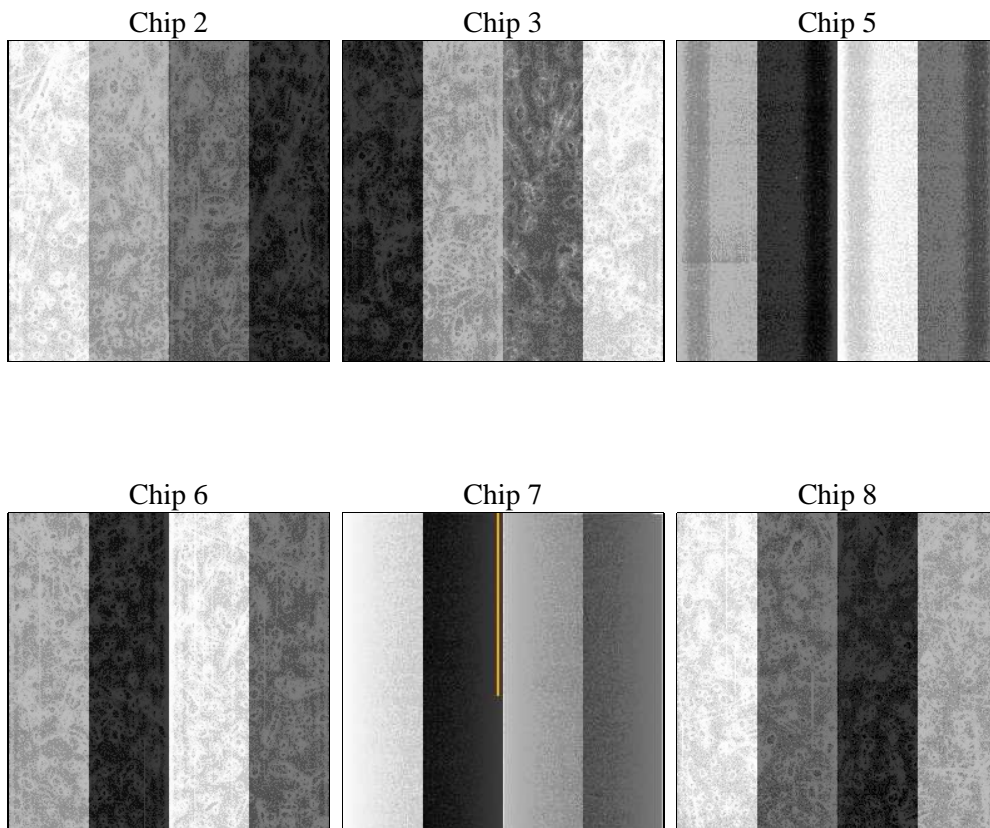
## 2 OBI

### 2.1 OBI

#### 2.1.1 Images



#### 2.1.2 Bias



### 2.1.3 Parameters

obi_num	1	Obi number	sched_exp_time	10400.000000	[s] Scheduled observation exposure time
ascdsver	8.4.5	Processing system revision	ontime	10124.426065505	Sum of GTIs [s]
caldsver	4.5.1.1	&#160	ontime2	10121.226135284	Sum of GTIs [s]
date	2012-08-26T20:40:52	Date and time of file creation	ontime3	10124.30294551	Sum of GTIs [s]
revision	4	Processing version of data	ontime5	10124.385045409	Sum of GTIs [s]
			ontime6	10124.343985513	Sum of GTIs [s]
			ontime7	10124.426065505	Sum of GTIs [s]
			ontime8	10121.020835564	Sum of GTIs [s]
			l1events	532211	Number of level 1 events

### 2.1.4 Events

	ccd 2	ccd 3	ccd 5	ccd 6	ccd 7	ccd 8		ccd 2	ccd 3	ccd 5	ccd 6	ccd 7	ccd 8
level 1 events	77319	74305	100182	76213	108197	95995	grade 0 events	3264	3417	5830	3440	10229	5723
rejected events	69632	66440	54544	67961	50804	77889		4%	4%	5%	4%	9%	5%
rejected %	90%	89%	54%	89%	46%	81%	grade 1 events	44	29	147	35	114	64
								0%	0%	0%	0%	0%	0%
							grade 2 events	1682	1546	12691	1548	12685	3870
								2%	2%	12%	2%	11%	4%
							grade 3 events	713	800	2173	823	5775	2049
								0%	1%	2%	1%	5%	2%
							grade 4 events	730	742	2045	867	5661	1790
								0%	0%	2%	1%	5%	1%
							grade 5 events	2308	2499	8267	2768	8563	3392
								2%	3%	8%	3%	7%	3%
							grade 6 events	1300	1368	22914	1577	23062	4679
								1%	1%	22%	2%	21%	4%
							grade 7 events	67278	63904	46115	65155	42108	74428
								87%	86%	46%	85%	38%	77%

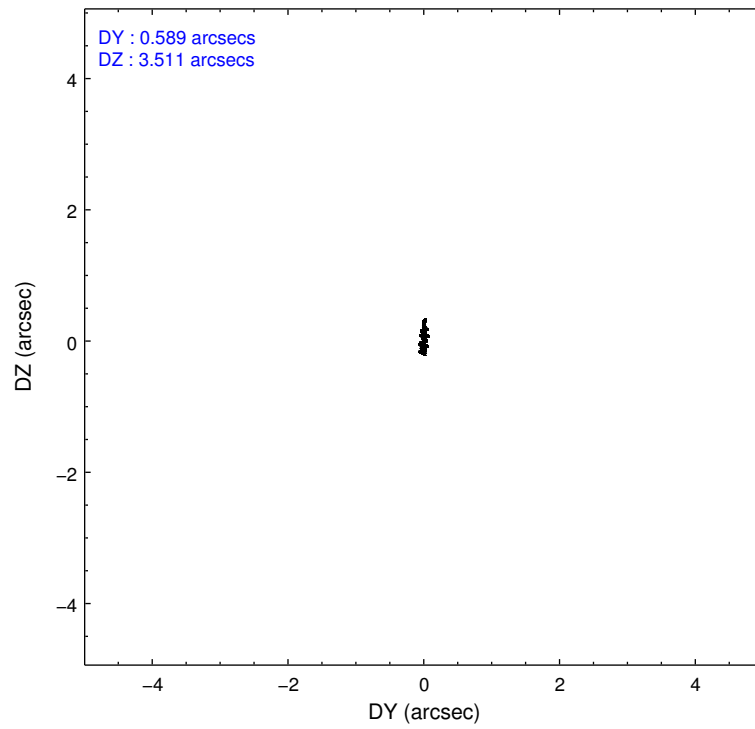
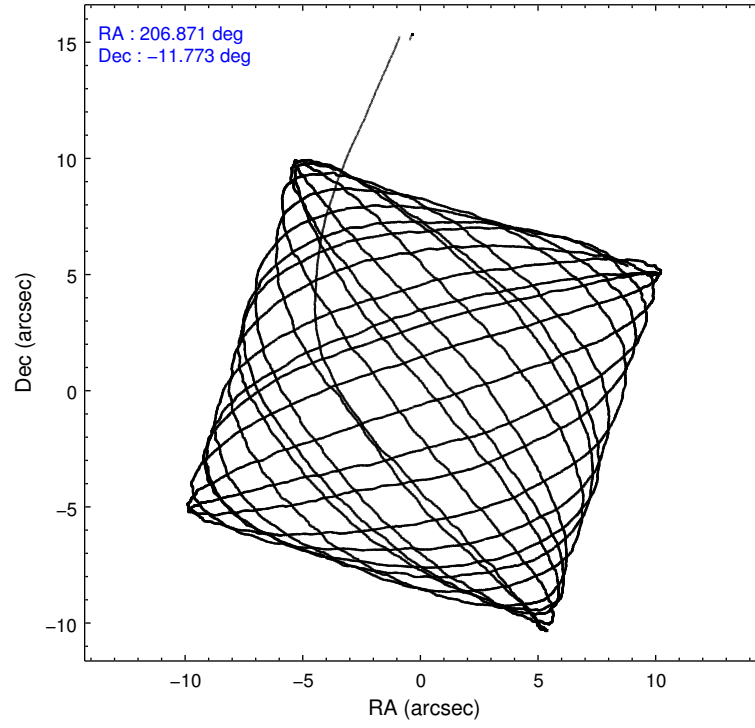


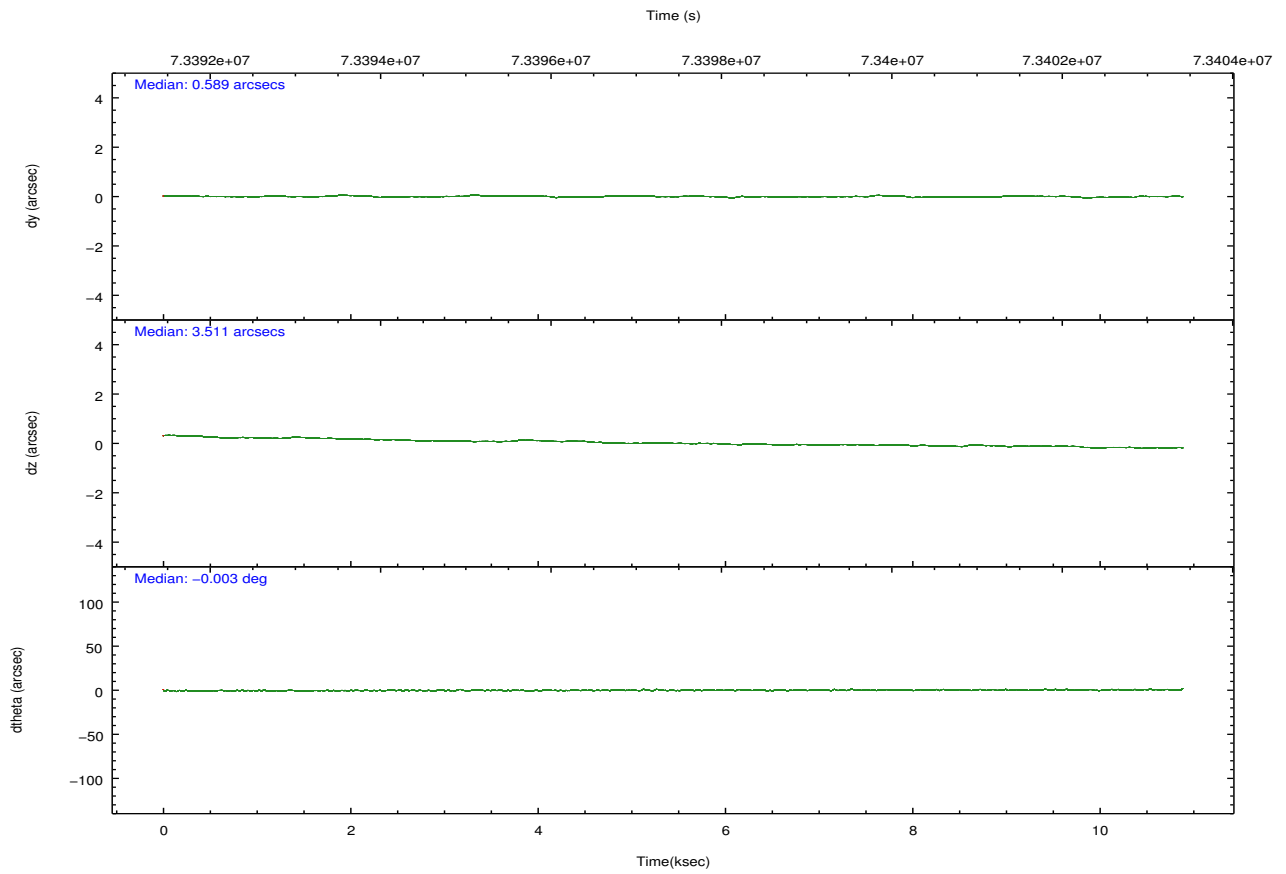
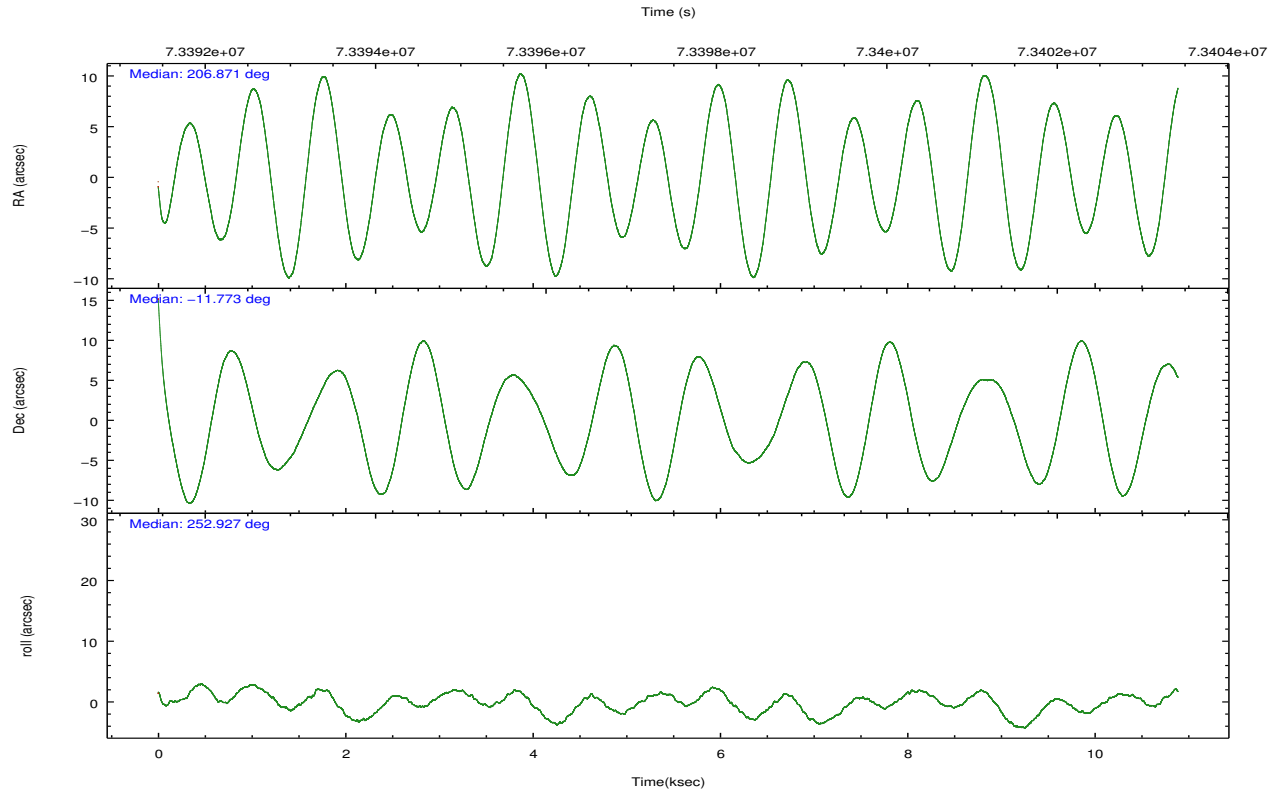
## 2.2 Compared Parameters

Parameter	Planned	Actual
Instrument	ACIS	ACIS
Detector	ACIS-235678	ACIS-235678
Grating	NONE	NONE
Data mode	FAINT	FAINT
Observation mode	POINTING	POINTING
[deg] Pointing RA	206.864683	206.8710243140629
[deg] Pointing Dec	-11.745874	-11.77261688476818
[deg] Pointing Roll	252.777047	252.9349782203067
[s] Window start time (MET)	63072064.184000	63072064.184000
[s] Window stop time (MET)	84153664.184000	84153664.184000
[mm] SIM focus pos	-0.684267	-0.6828225247311905
[mm] SIM defocus	0	0.001444936568705701
[mm] SIM translation stage pos	-190.132523	-190.1400660498719
[mm] SIM translation stage offset	0	0.00754346686406393
[s] Observation start time (MET)	73392475.184000	73391236.06588601
Observation start date	2000-04-29T10:46:51	2000-04-29T10:27:16
[s] Observation end time (MET)	73402875.184000	73403683.153842
Observation end date	2000-04-29T13:40:11	2000-04-29T13:54:43
Read mode	TIMED	TIMED

Parameter	Planned	Actual
Obspar format version number	7	7
Obspar file type	PREDICTED	ACTUAL
Obspar update status	NONE	UPDATED
Number of optional ACIS chips dropped	0	0
On-chip summing requested	N	N
Subarray requested	NONE	NONE
Alternating exposures requested	N	N
[s] Primary exposure time	0.000000	3.2

## 2.3 Aspect



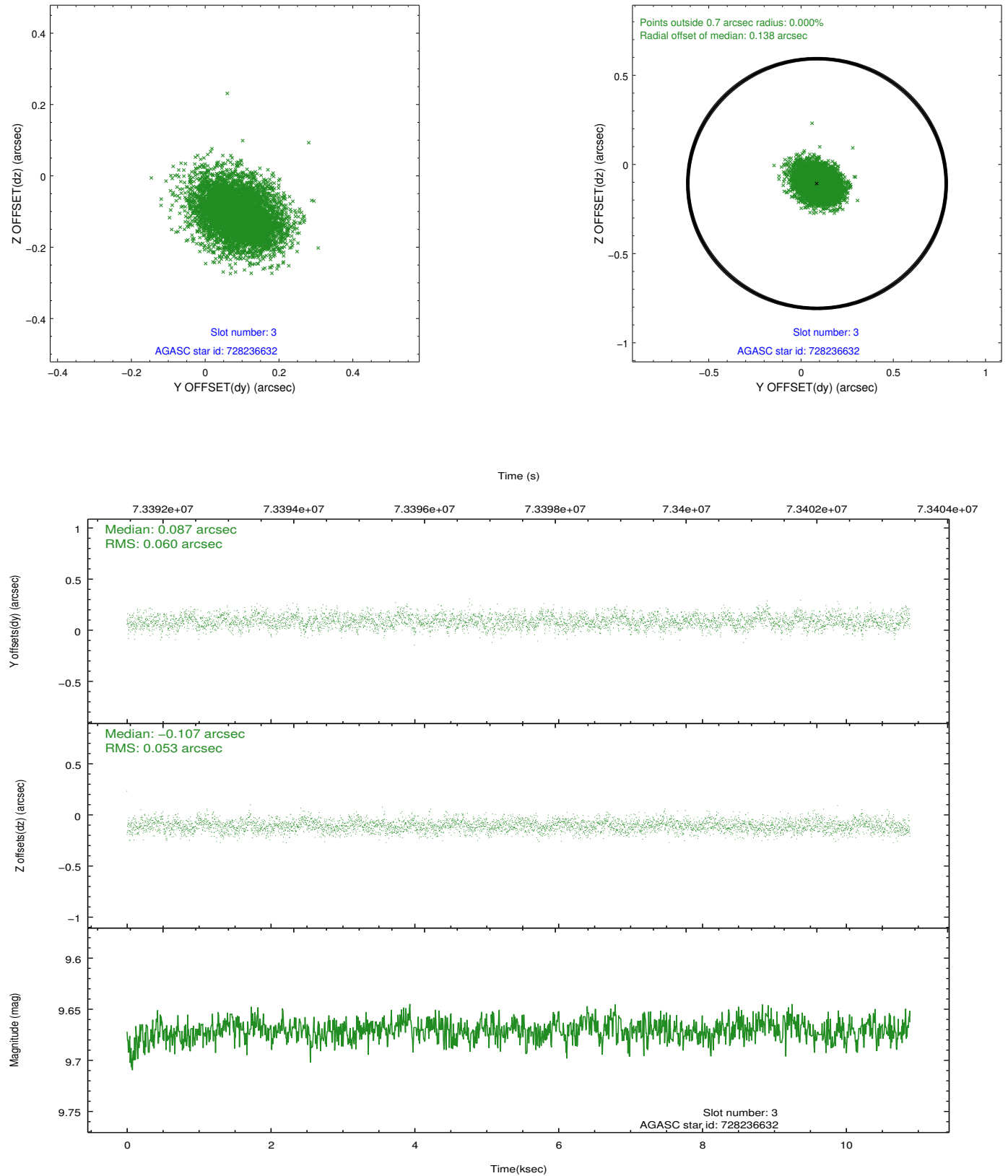


### Slot Statistics

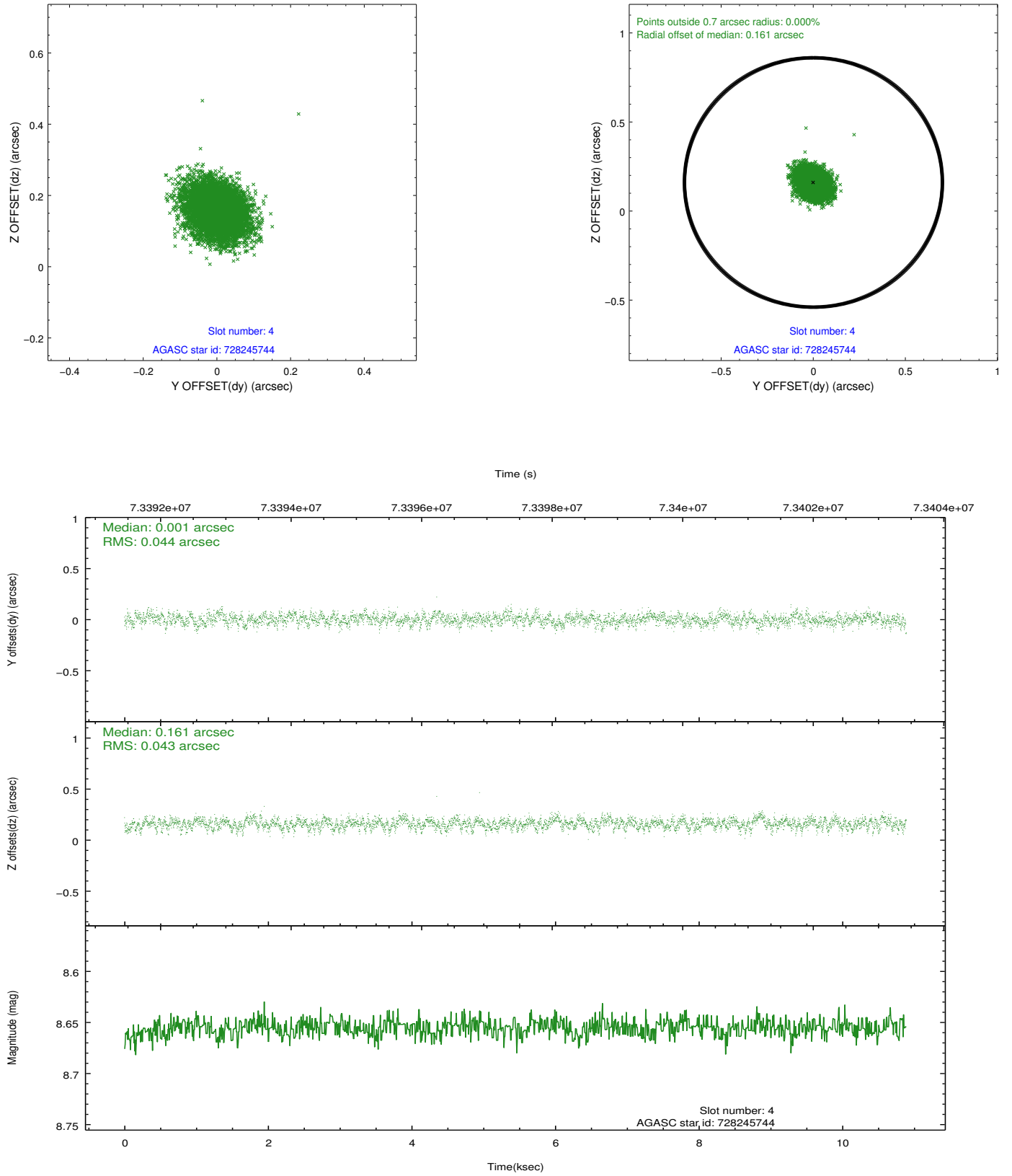
slot	status	id	mag	n_pts	med_dy	med_dz	dr1	dr2	ra	dec	mean_y	mean_z
0	FID	ACIS-S-2	7.11	2656	-0.014	-0.029	0.007	0.011	0.000000	0.000000	-753.22	-1724.62
1	FID	ACIS-S-4	7.21	2656	0.030	0.014	0.005	0.011	0.000000	0.000000	2159.93	183.35
2	FID	ACIS-S-5	7.23	2656	-0.047	0.023	0.006	0.010	0.000000	0.000000	-1805.44	177.66
3	GUIDE	728236632	9.67	5311	0.087	-0.107	0.085	0.140	206.842205	-12.122561	1318.16	327.20
4	GUIDE	728245744	8.66	5312	0.001	0.161	0.066	0.106	206.959040	-11.284446	-1685.54	-172.51
5	GUIDE	727327544	9.57	5311	0.014	-0.070	0.090	0.144	206.398747	-11.483258	-415.66	-1848.62
6	GUIDE	728237392	6.91	5312	-0.148	-0.015	0.062	0.110	207.704489	-11.358782	-2205.76	2420.45
7	GUIDE	727321472	9.85	5305	0.041	0.034	0.096	0.164	206.729745	-11.411859	-1008.27	-809.33

## 2.4 Star Slots

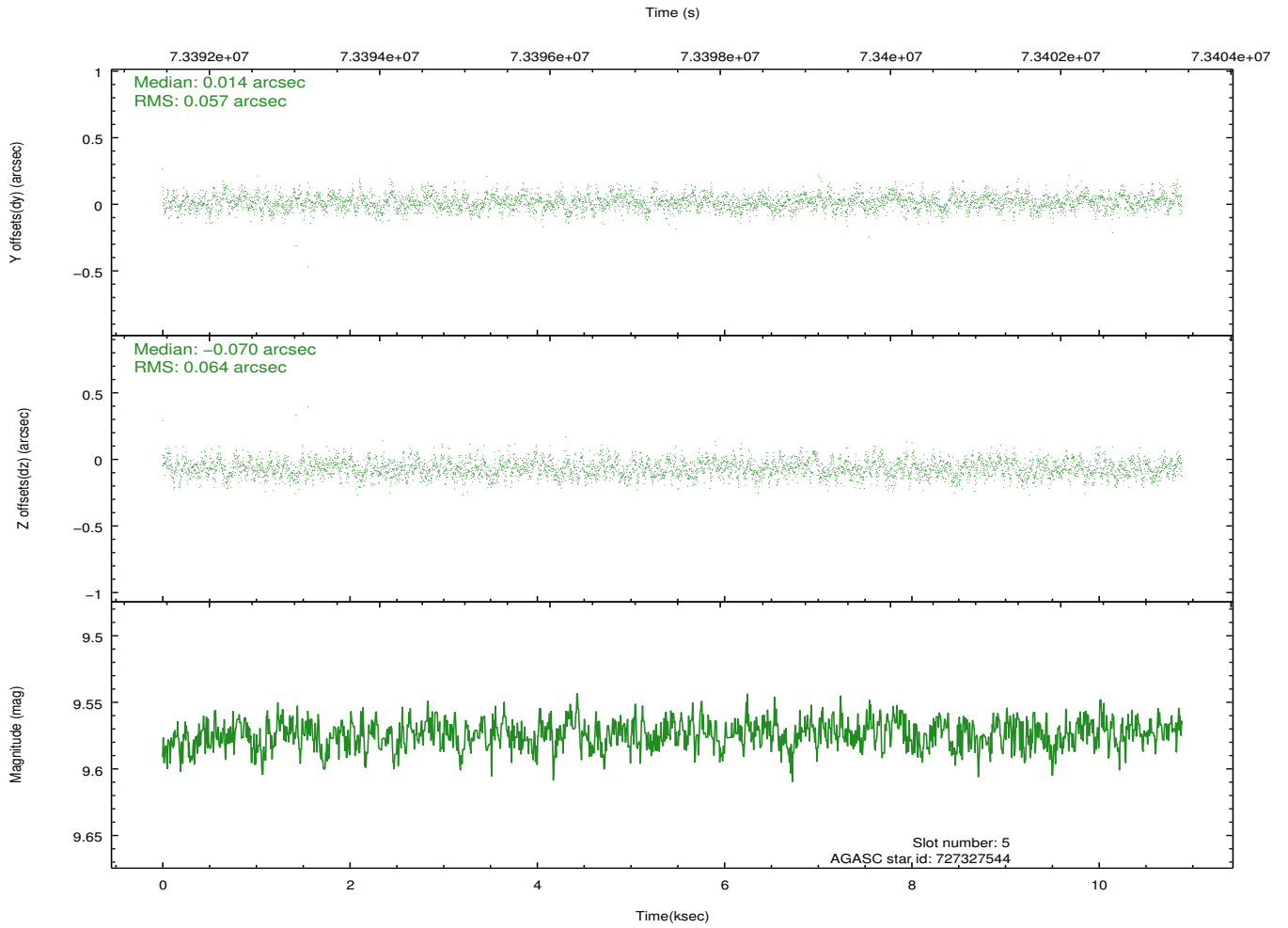
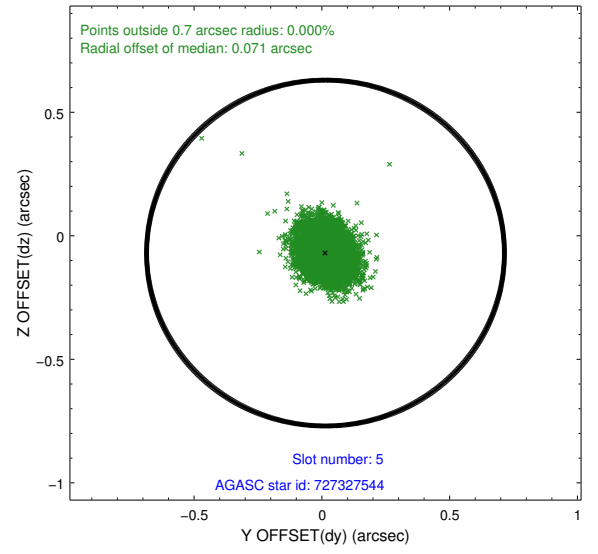
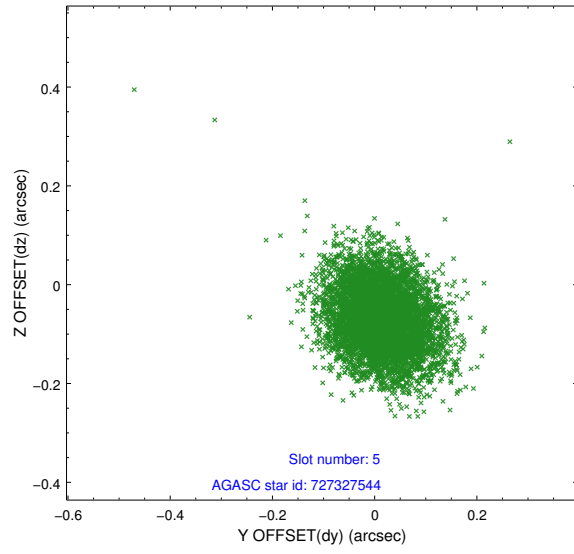
### 2.4.1 Slot 3



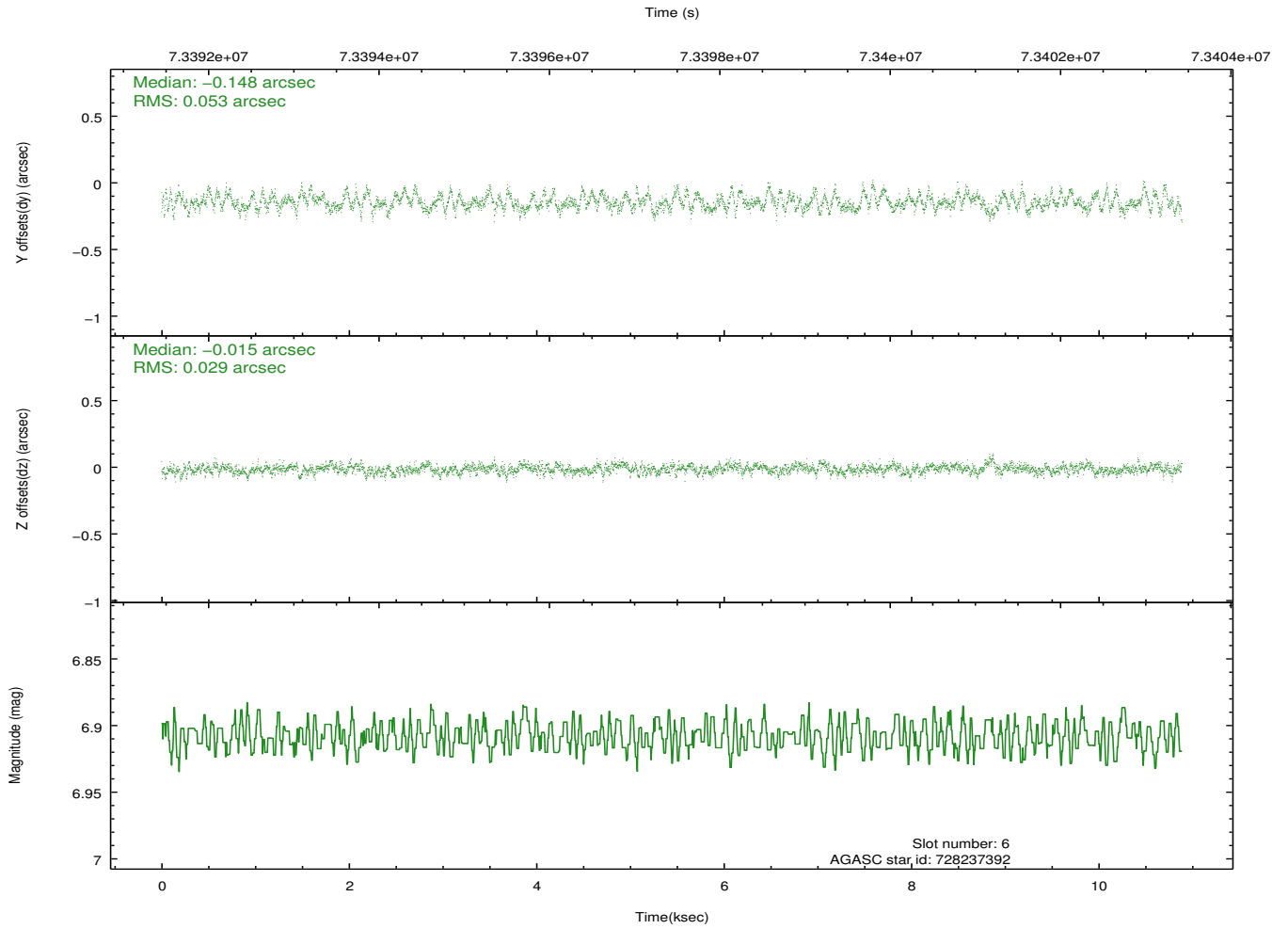
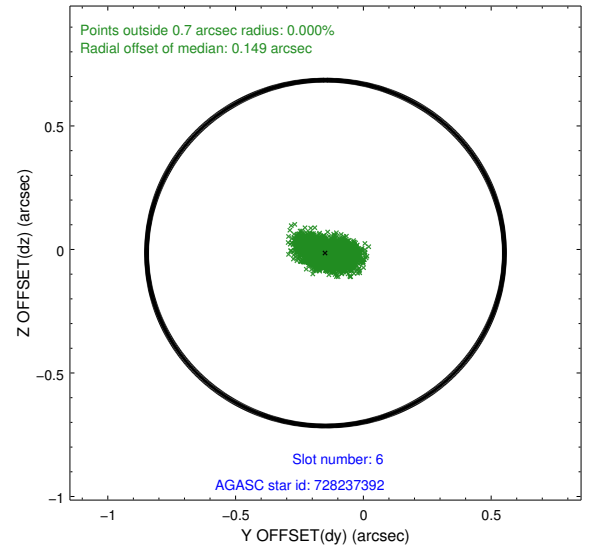
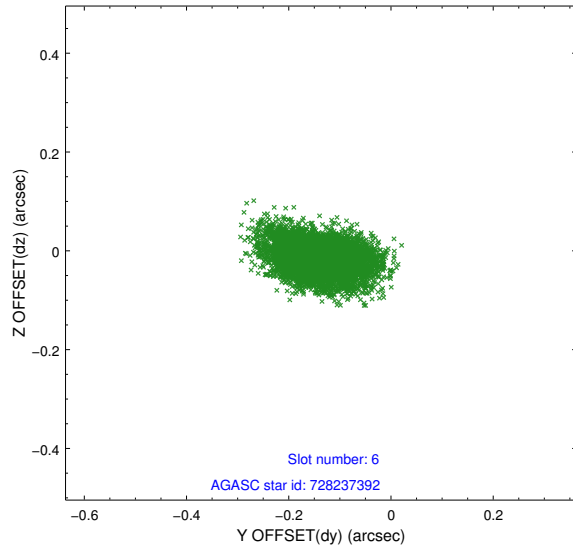
## 2.4.2 Slot 4



### 2.4.3 Slot 5

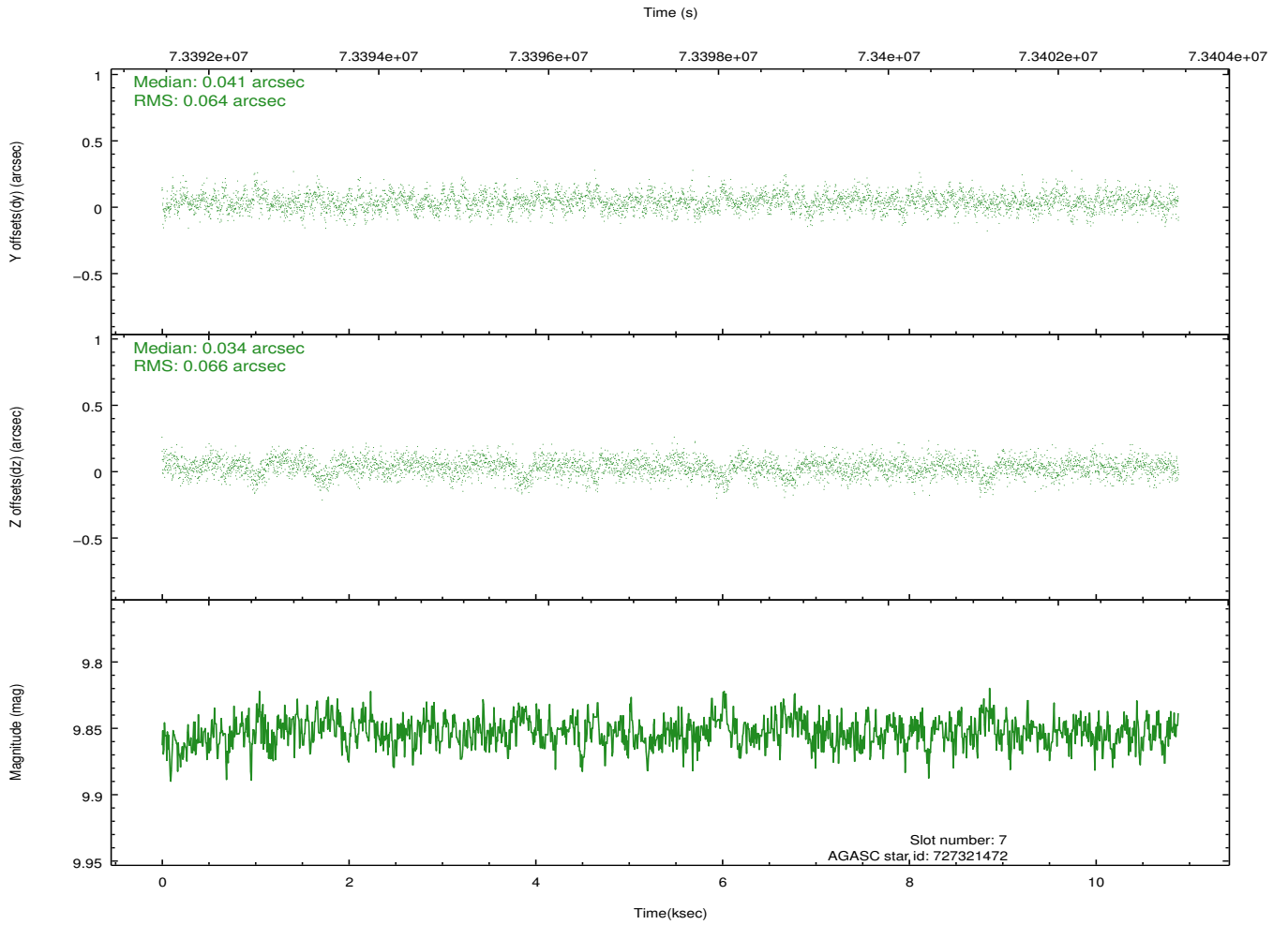
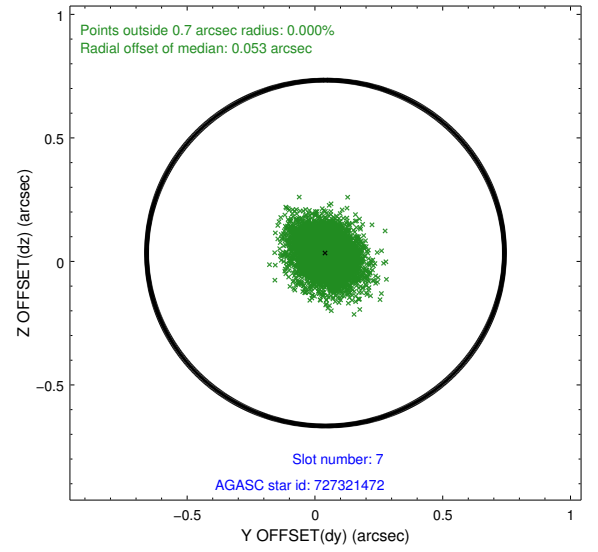
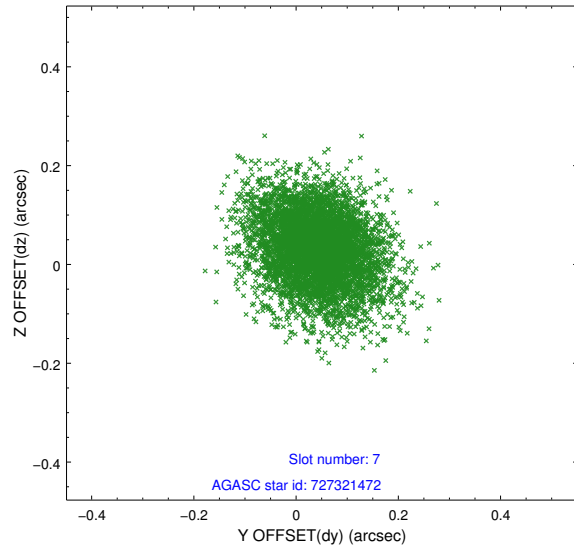


## 2.4.4 Slot 6



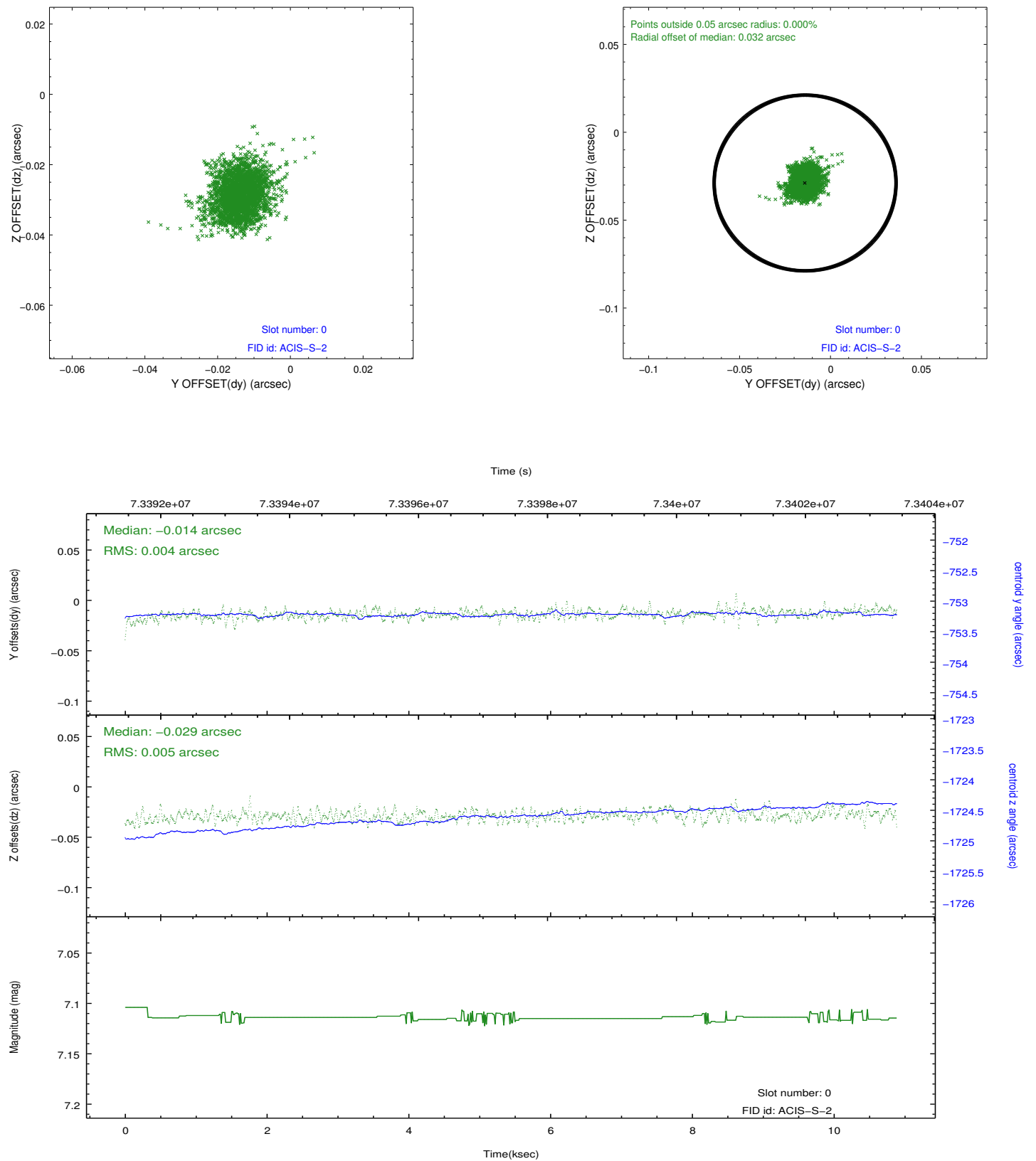


## 2.4.5 Slot 7

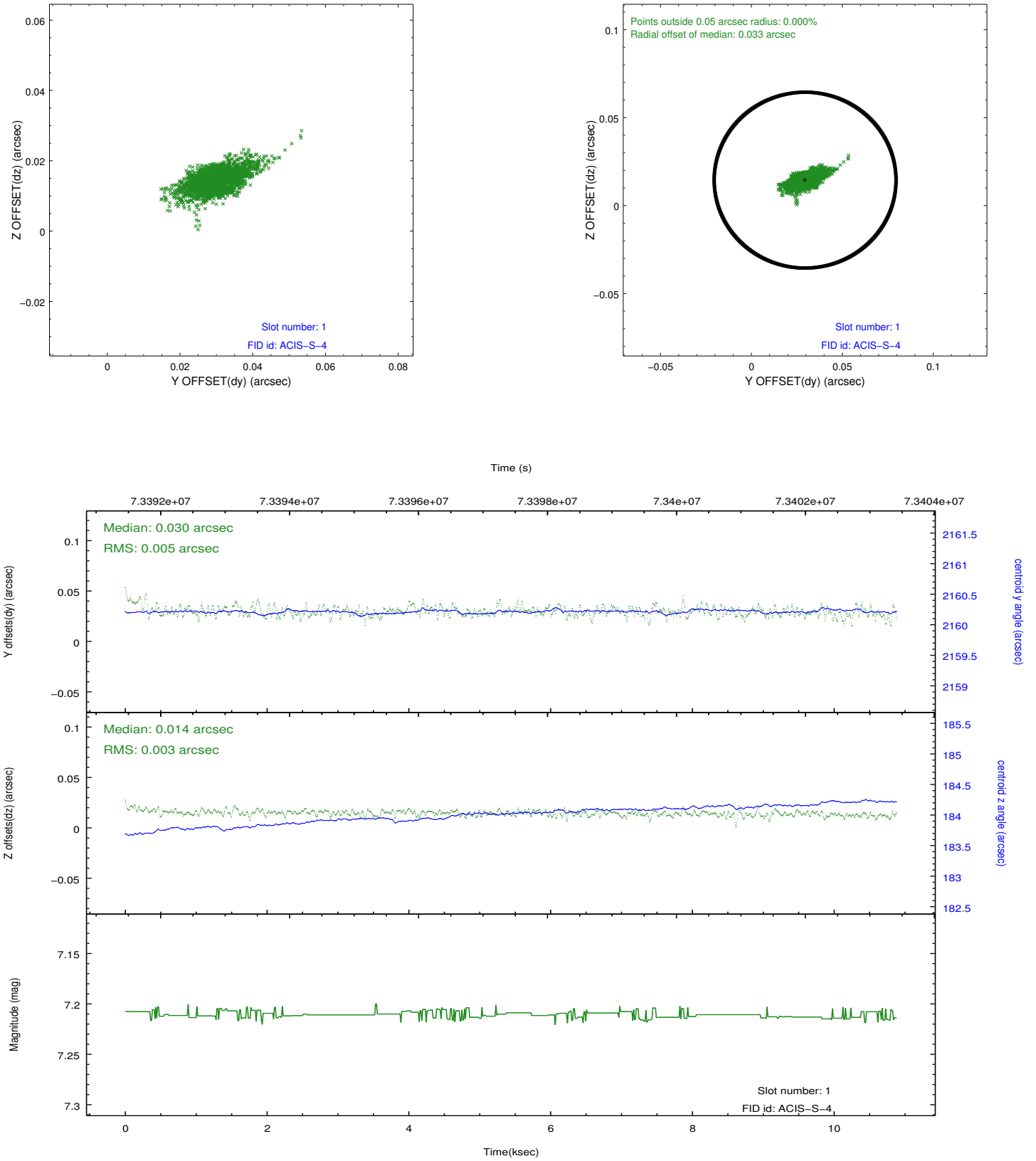


## 2.5 FID Slots

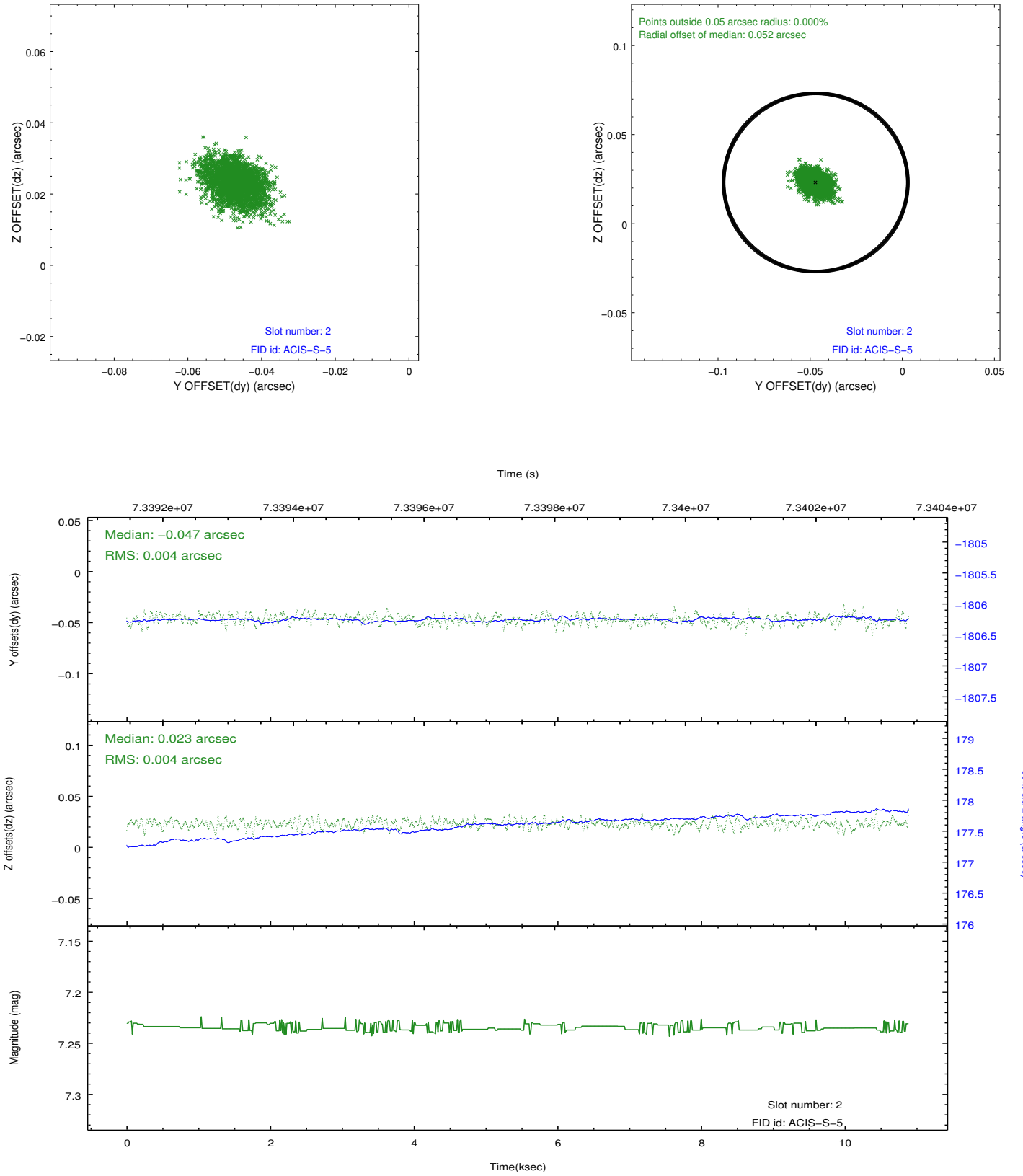
### 2.5.1 Slot 0



## 2.5.2 Slot 1



### 2.5.3 Slot 2



## A Summary

### A.1 Status

V&V Scientist	Jen Lauer
V&V Date (YYYY-MM-DD)	2012.08.29
V&V Edition	1
V&V Disposition and Status	OK
V&V Charge Time	10.124

### A.2 Comments

Window constraint met.