

V&V Reference Report

L2 ASCDS Version : 7.6.8

Observation 4127 - L2 Version 001
Chandra X-Ray Center

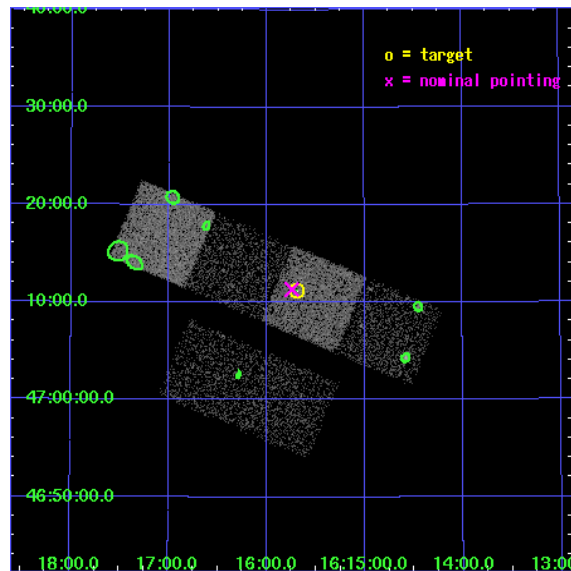
L2 Processing Date : Jun 22 2006

Contents

1	Front	2
2	OBI	3
2.1	OBI	3
2.1.1	Images	3
2.1.2	Bias	3
2.1.3	Parameters	4
2.1.4	Events	4
2.2	Compared Parameters	5
2.3	Aspect	6
2.4	Star Slots	9
2.4.1	Slot 3	9
2.4.2	Slot 4	10
2.4.3	Slot 5	11
2.4.4	Slot 6	12
2.4.5	Slot 7	13
2.5	FID Slots	14
2.5.1	Slot 0	14
2.5.2	Slot 1	15
2.5.3	Slot 2	16
3	Point Sources	17
A	Summary	18
A.1	Status	18
A.2	Comments	18

1 Front

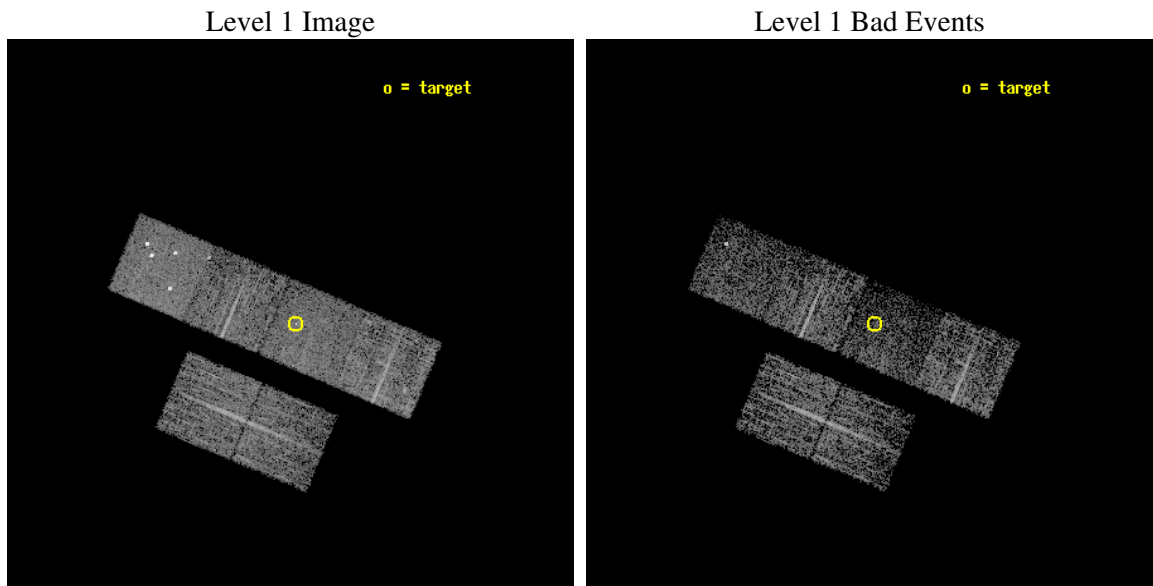
seq_num	700806
obs_id	4127
title	WHAT KIND OF JETS DOES NATURE MAKE? X-RAY CHARACTERIZATION OF THE FIRST FLAT SPECTRUM SAMPLE
observer	Dr. Giovanni Fossati
object	B3 1614+473
dtcycle	0
cycle	P
ra_targ	243.921667
dec_targ	47.186667
ra_nom	243.93568786315
dec_nom	47.188838112819
roll_nom	22.989171216392
revision	2
ontime	3964.79998523
livetime	3914.5953005011
ontime2	3964.79998523
ontime3	3964.79998523
ontime5	3964.79998523
ontime6	3964.79998523
ontime7	3964.79998523
ontime8	3964.79998523
l2events	26784



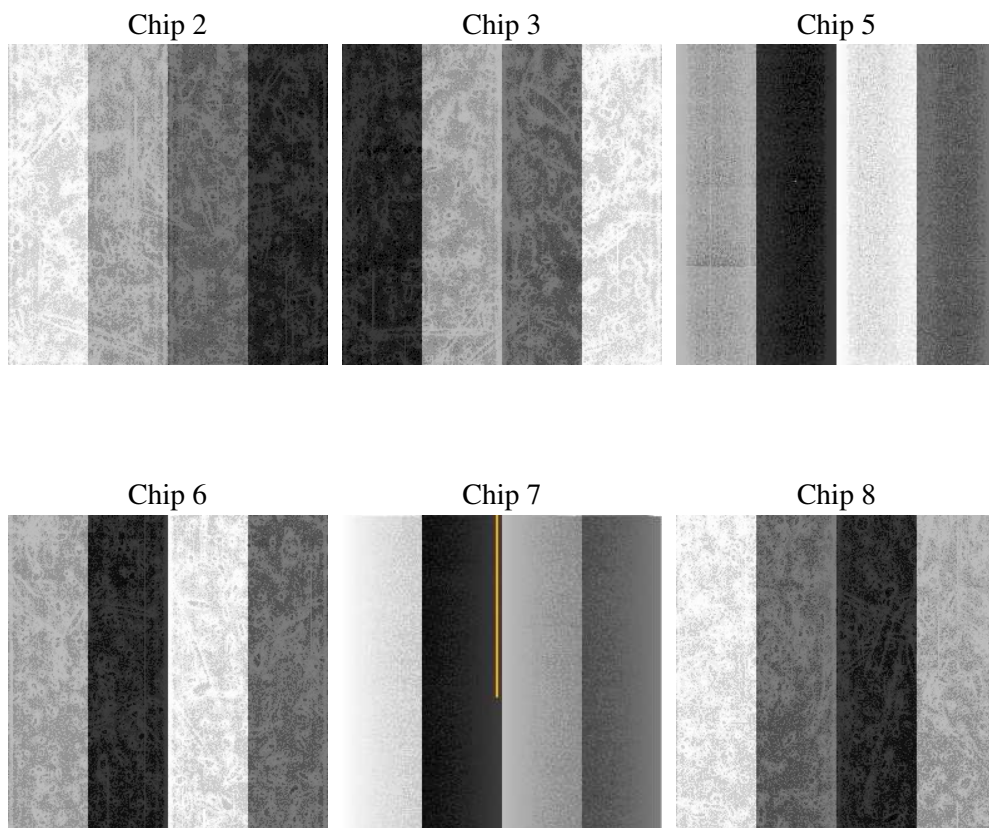
2 OBI

2.1 OBI

2.1.1 Images



2.1.2 Bias



2.1.3 Parameters

obi_num	0
ascdsver	7.6.8
caldsver	3.2.2
date	2006-06-22T04:09:04
revision	2

sched_exp_time	4000.000000
ontime	3970.2308928072
ontime2	3970.2308928072
ontime3	3970.2308928072
ontime5	3970.2309126854
ontime6	3970.2308928072
ontime7	3970.2308928072
ontime8	3970.2308928072
l1events	126085

2.1.4 Events

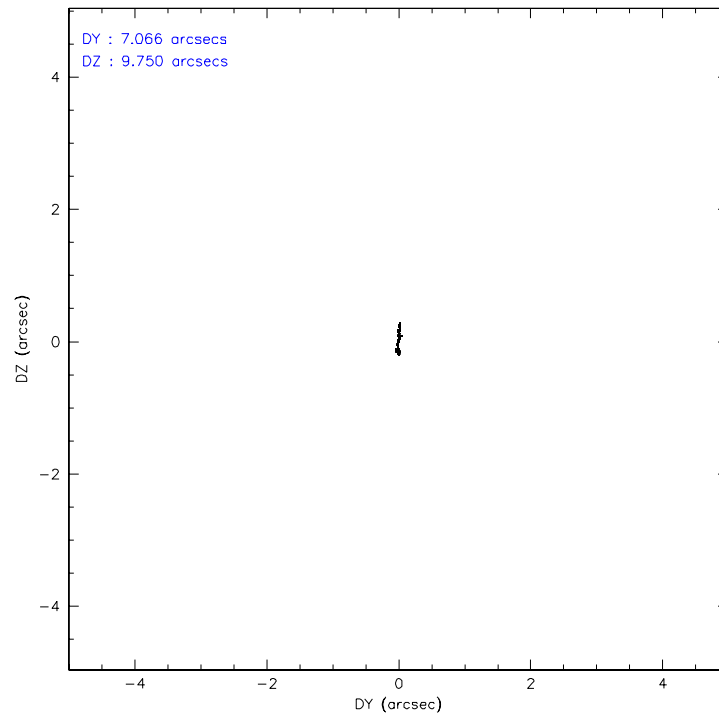
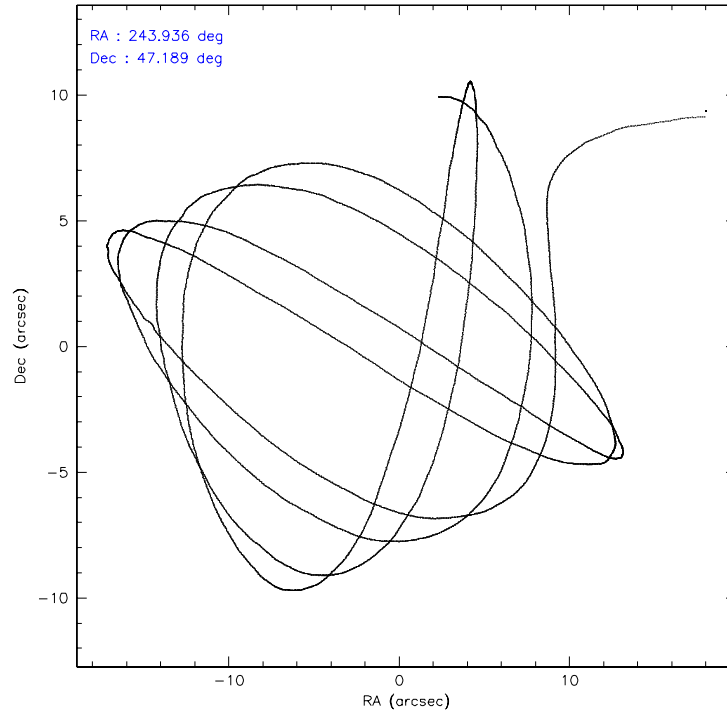
	ccd 2	ccd 3	ccd 5	ccd 6	ccd 7	ccd 8
level 1 events	20427	17453	27071	19105	18900	23129
rejected events	18501	15642	11819	17104	10063	18158
rejected %	90%	89%	43%	89%	53%	78%

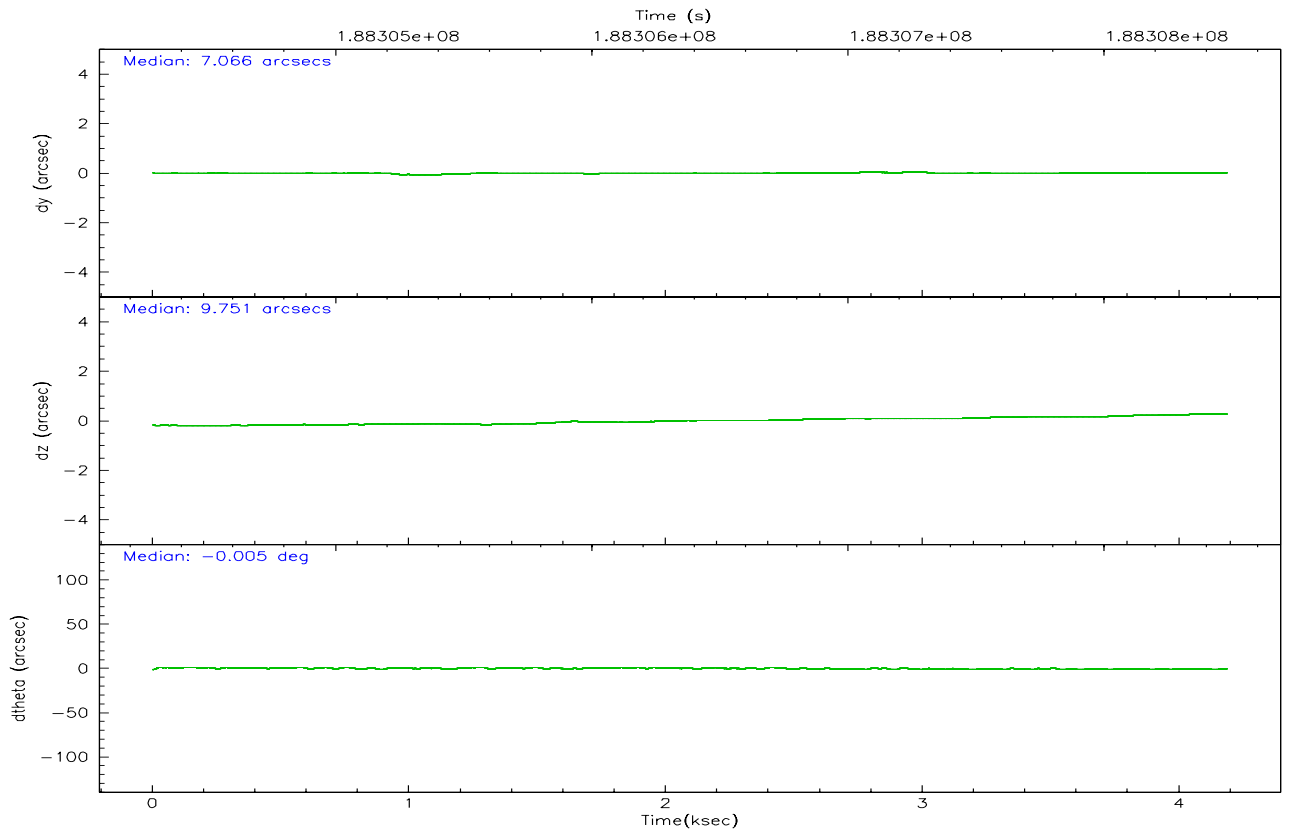
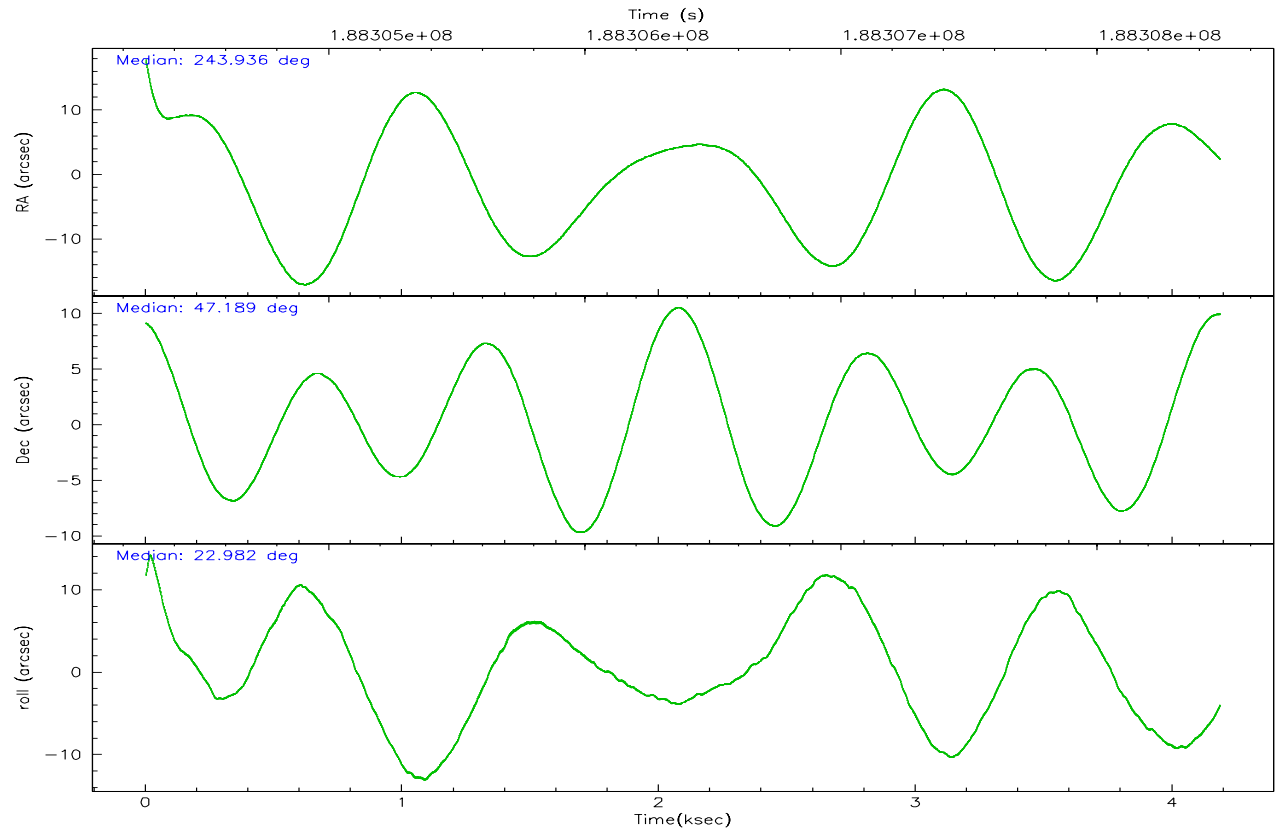
	ccd 2	ccd 3	ccd 5	ccd 6	ccd 7	ccd 8
grade 0 events	749	674	4073	741	815	1612
	3%	3%	15%	3%	4%	6%
grade 1 events	10	14	400	10	12	16
	0%	0%	1%	0%	0%	0%
grade 2 events	467	366	4002	454	2262	1127
	2%	2%	14%	2%	11%	4%
grade 3 events	190	213	319	227	579	540
	0%	1%	1%	1%	3%	2%
grade 4 events	200	223	400	195	564	485
	0%	1%	1%	1%	2%	2%
grade 5 events	579	638	1340	679	1471	975
	2%	3%	4%	3%	7%	4%
grade 6 events	323	338	6480	393	4642	1214
	1%	1%	23%	2%	24%	5%
grade 7 events	17909	14987	10057	16406	8555	17160
	87%	85%	37%	85%	45%	74%

2.2 Compared Parameters

Parameter	Planned	Actual	Parameter	Planned	Actual
Instrument	ACIS	ACIS	Obspar format version number	6	6
Detector	ACIS-235678	ACIS-235678	Obspar file type	PREDICTED	ACTUAL
Grating	NONE	NONE	Obspar update status	NONE	UPDATED
Data mode	VFAINT	VFAINT	On-chip summing requested	N	N
Observation mode	POINTING	POINTING	Subarray requested	NONE	NONE
Pointing RA	243.911857	243.9356878631542	Alternating exposures requested	N	N
Pointing Dec	47.166859	47.18883811281938	Primary exposure time	0.000000	3.2
Pointing Roll	22.849989	22.98917121639194			
SIM focus pos (mm)	-0.684267	-0.6828225247311905			
SIM defocus (mm)	0	0.001444936568705701			
SIM translation stage pos (mm)	-190.132523	-190.1400660498719			
SIM translation stage offset (mm)	0	0.00754346686406393			
Observation start time	188304478.184000	188303515.60452			
Observation start date	2003-12-20T10:46:54	2003-12-20T10:31:55			
Observation end time	188308478.184000	188309102.87977			
Observation end date	2003-12-20T11:53:34	2003-12-20T12:05:02			
Read mode	TIMED	TIMED			

2.3 Aspect



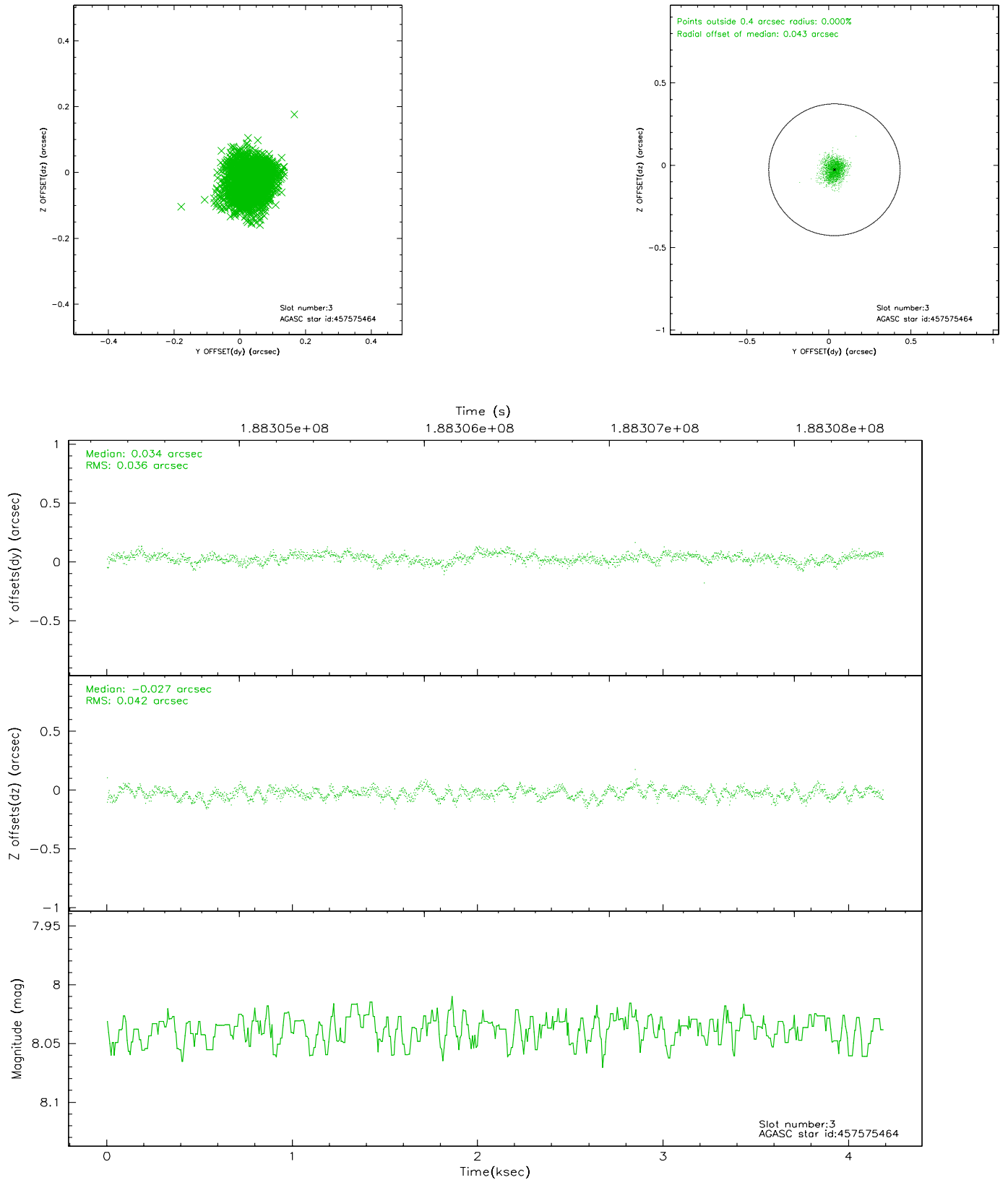


Slot Statistics

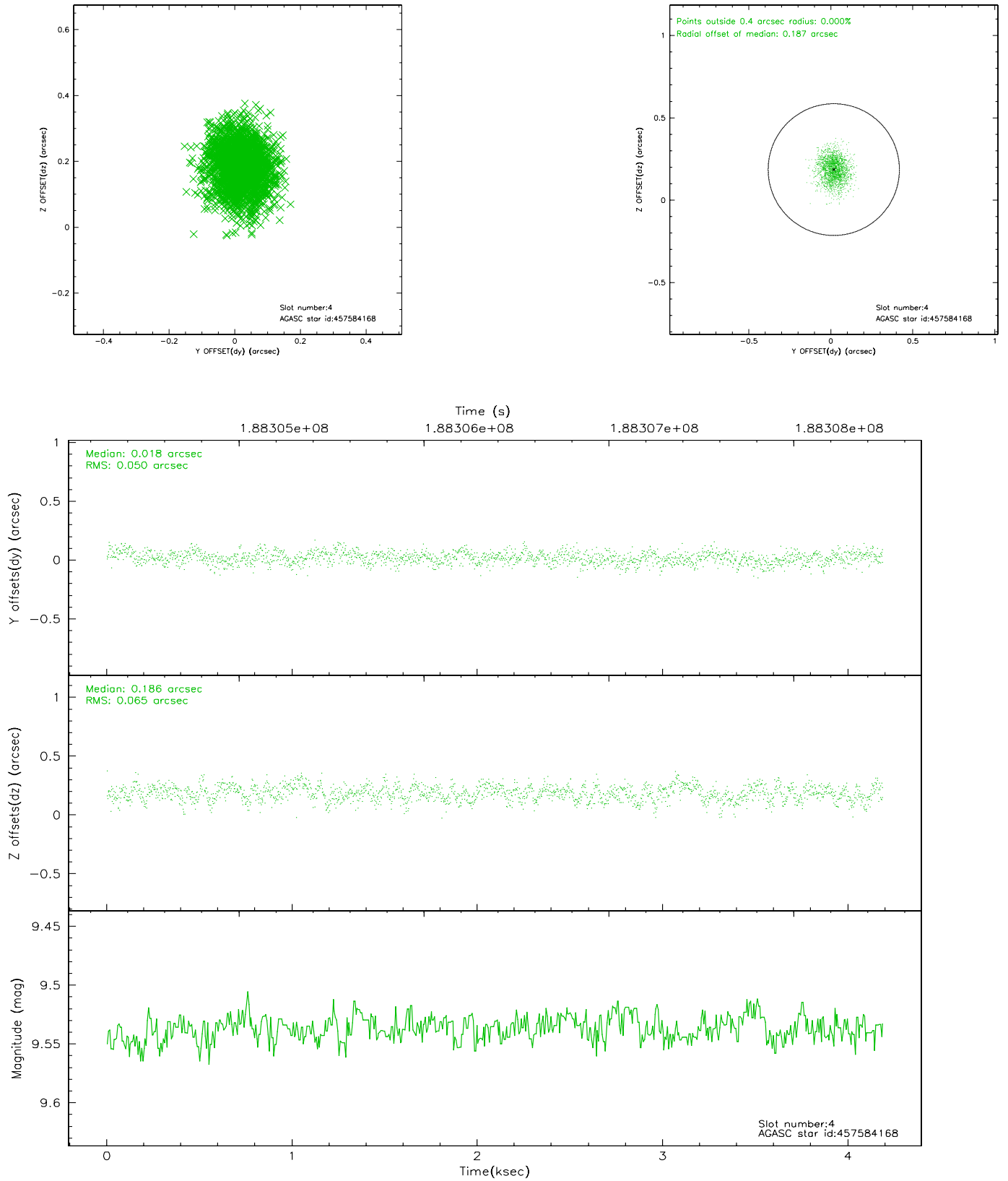
slot	status	id	mag	n_pts	med_dy	med_dz	dr1	dr2	ra	dec	mean_y	mean_z
0	FID	ACIS-S-2	7.10	1021	-0.032	0.008	0.007	0.011	0.000000	0.000000	-759.82	-1730.99
1	FID	ACIS-S-4	7.20	1021	0.019	0.013	0.005	0.009	0.000000	0.000000	2152.80	176.01
2	FID	ACIS-S-5	7.23	1021	-0.018	-0.013	0.006	0.011	0.000000	0.000000	-1810.77	171.28
3	GUIDE	457575464	8.04	2043	0.034	-0.027	0.058	0.094	243.696515	46.877603	-892.46	-752.91
4	GUIDE	457584168	9.54	2042	0.018	0.186	0.087	0.144	243.512869	46.383959	-2007.04	-2210.20
5	GUIDE	457705240	7.72	2042	0.025	0.104	0.061	0.095	243.799590	47.040088	-432.08	-313.98
6	GUIDE	457706072	9.42	2042	-0.034	-0.094	0.093	0.156	244.344808	47.329769	1201.94	133.23
7	GUIDE	457975936	8.35	2042	-0.050	-0.167	0.079	0.131	242.785165	47.542327	-1990.40	2327.25

2.4 Star Slots

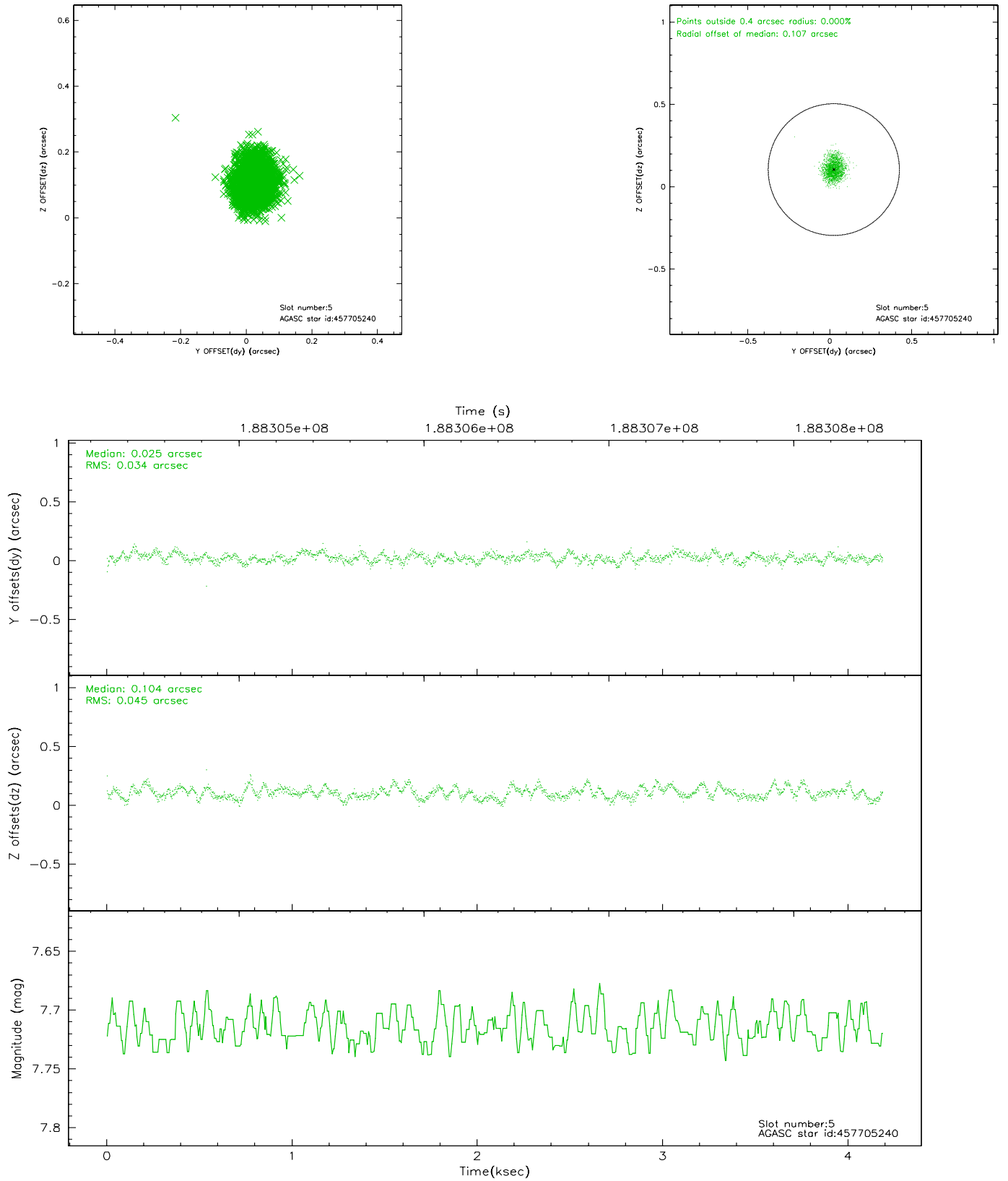
2.4.1 Slot 3



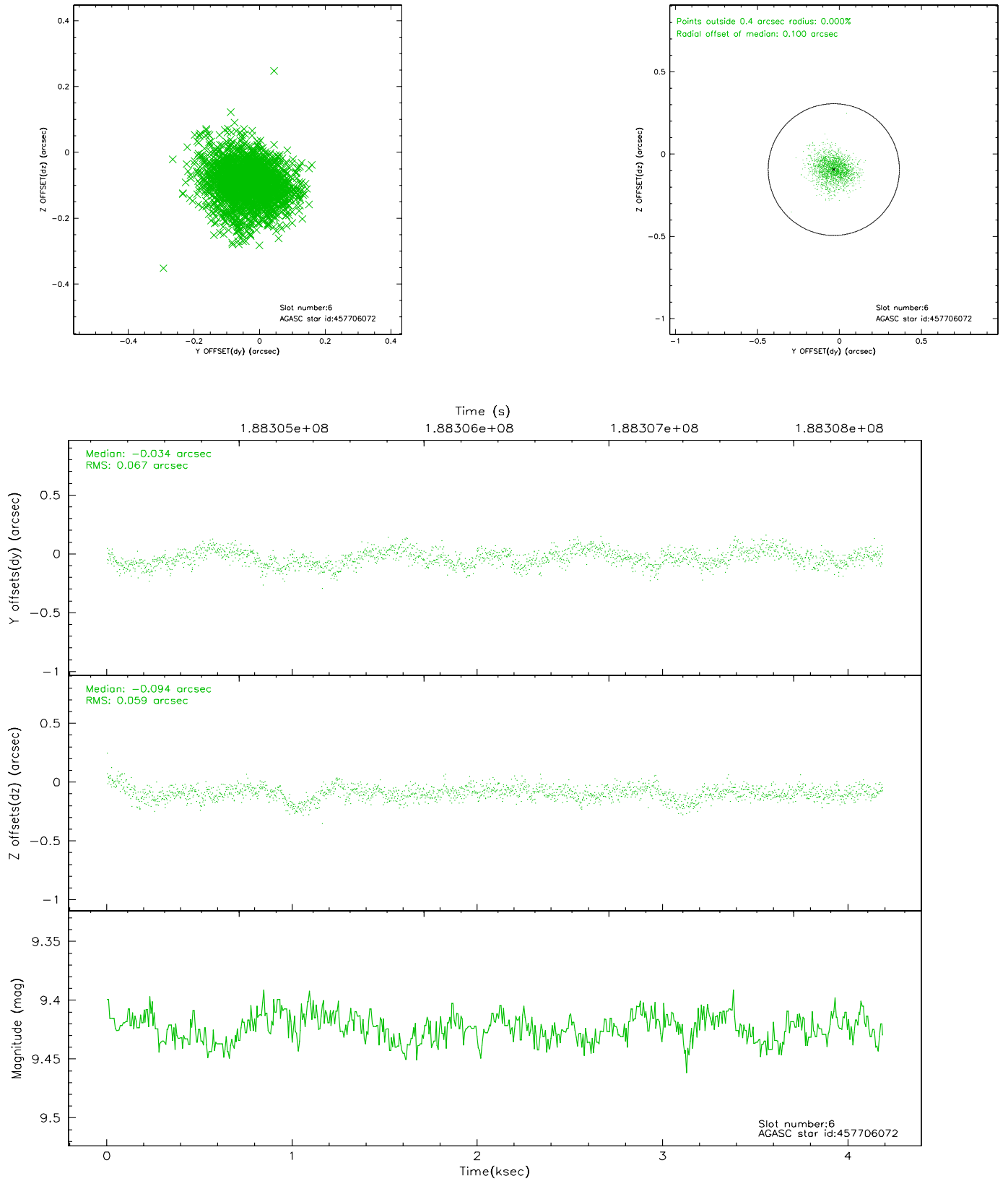
2.4.2 Slot 4



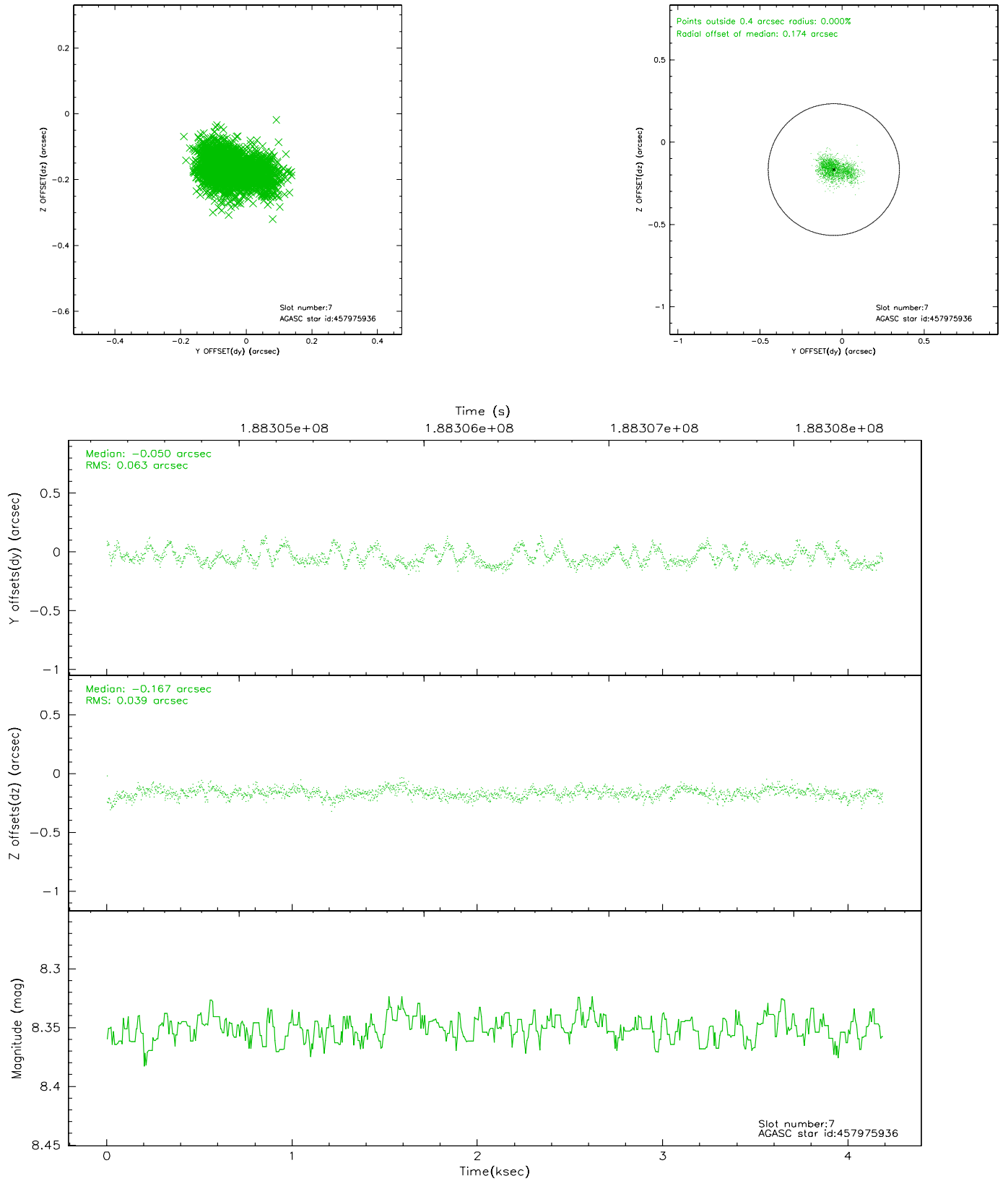
2.4.3 Slot 5



2.4.4 Slot 6

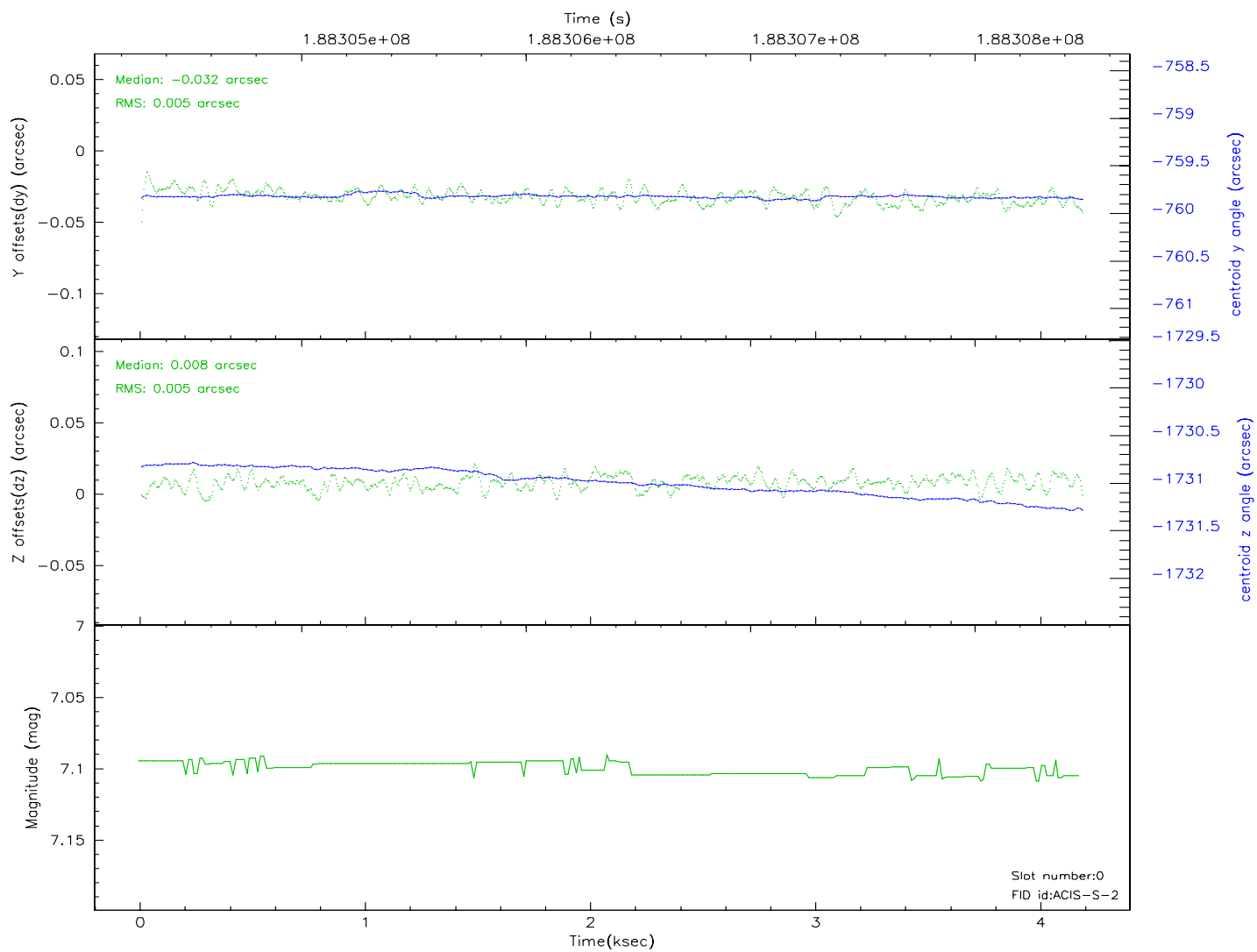
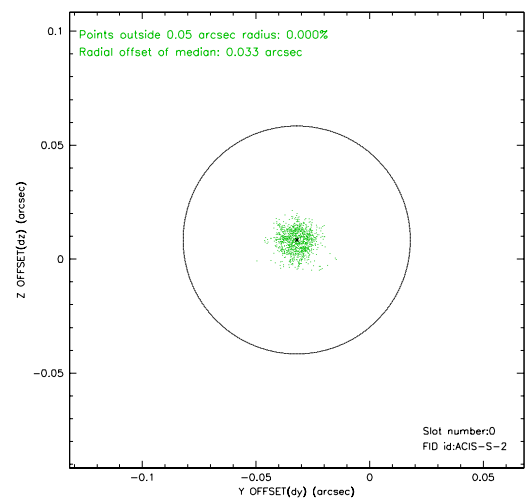
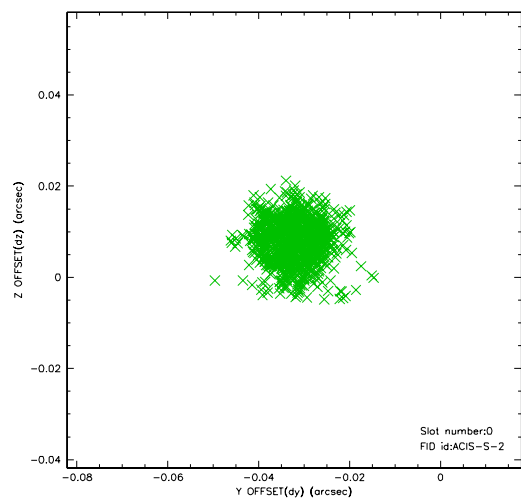


2.4.5 Slot 7

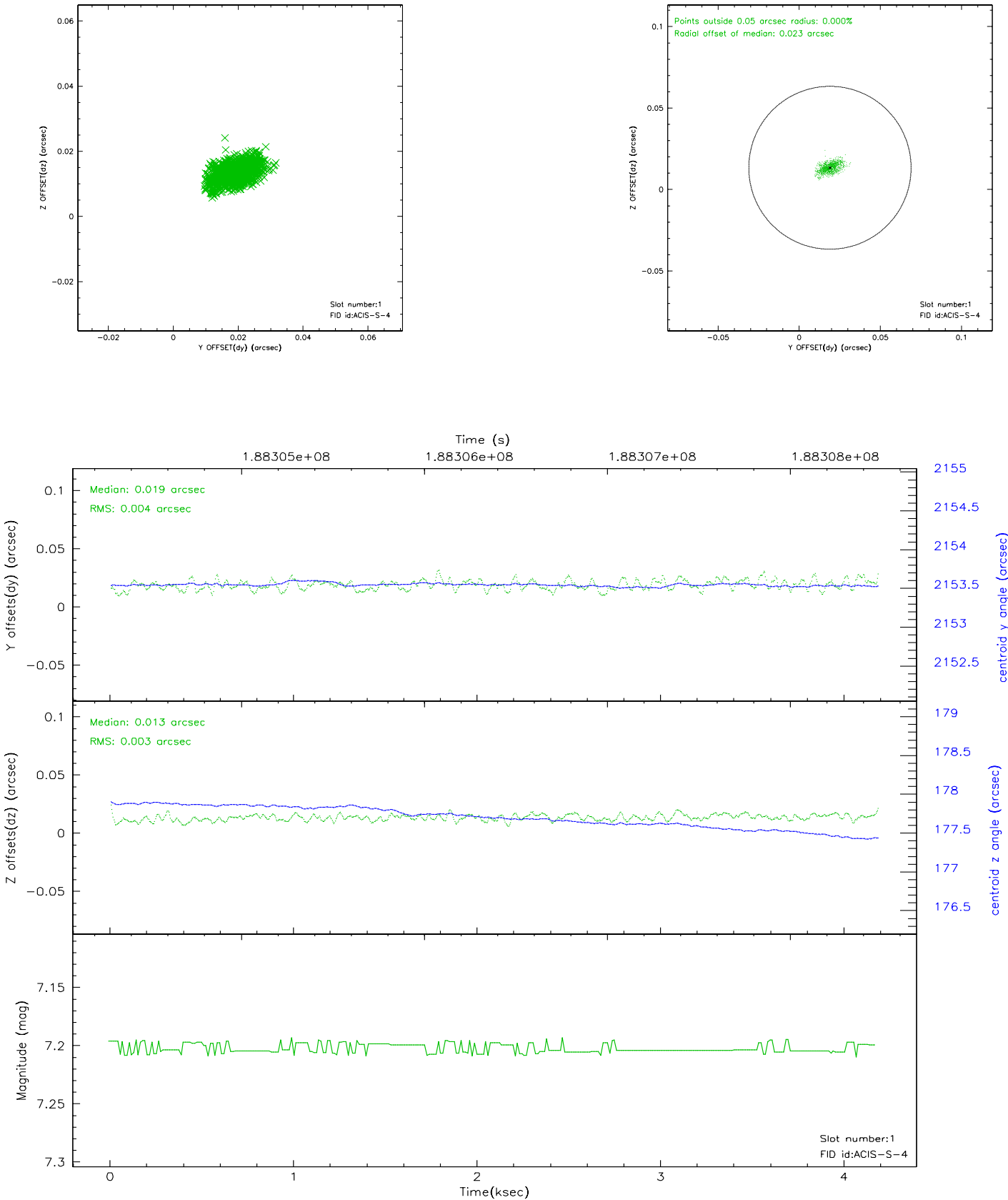


2.5 FID Slots

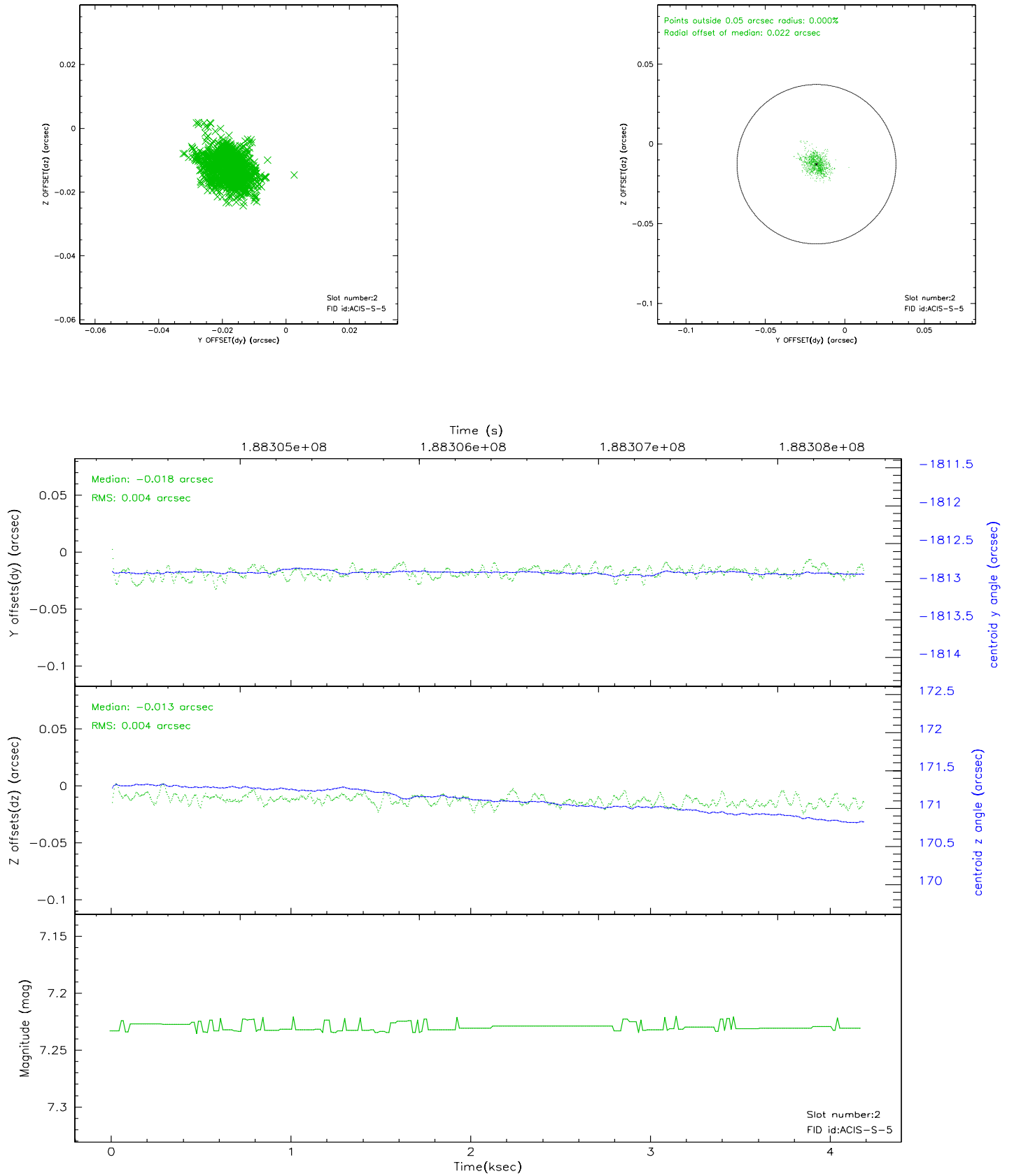
2.5.1 Slot 0



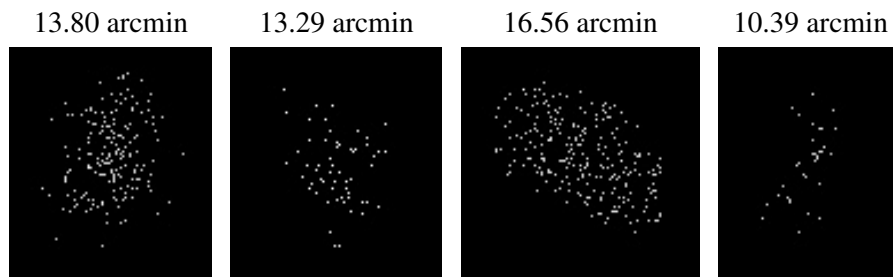
2.5.2 Slot 1



2.5.3 Slot 2



3 Point Sources



A Summary

A.1 Status

V&V Scientist	Jen Lauer
V&V Date (YYYY-MM-DD)	2006.06.22
V&V Edition	1
V&V Disposition and Status	OK
V&V Charge Time	3.967

A.2 Comments