

V&V Reference Report

L2 ASCDS Version : 7.6.9

Observation 2687 - L2 Version 001
Chandra X-Ray Center

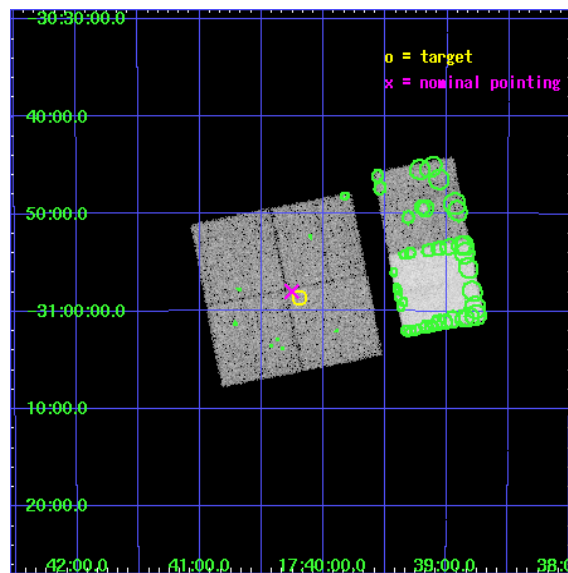
L2 Processing Date : Sep 15 2006

Contents

1	Front	2
2	OBI	3
2.1	OBI	3
2.1.1	Images	3
2.1.2	Bias	3
2.1.3	Parameters	4
2.1.4	Events	4
2.2	Compared Parameters	5
2.3	Aspect	6
2.4	Star Slots	9
2.4.1	Slot 3	9
2.4.2	Slot 4	10
2.4.3	Slot 5	11
2.4.4	Slot 6	12
2.4.5	Slot 7	13
2.5	FID Slots	14
2.5.1	Slot 0	14
2.5.2	Slot 1	15
2.5.3	Slot 2	16
3	Point Sources	17
A	Summary	18
A.1	Status	18
A.2	Comments	18

1 Front

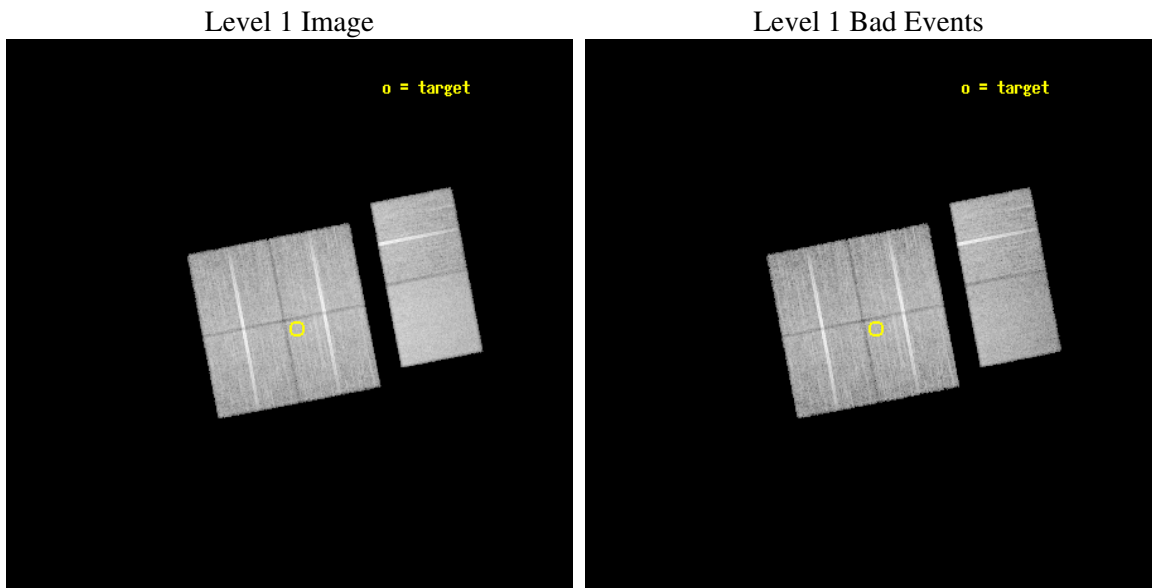
seq_num	400167
obs_id	2687
title	UNTWISTING THE TORNADO
observer	Professor Bryan Gaensler
object	TORNADO
dtcycle	0
cycle	P
ra_targ	265.04875
dec_targ	-30.977278
ra_nom	265.06388356007
dec_nom	-30.966446379519
roll_nom	79.038595358799
revision	2
ontime	20985.599921823
livetime	20719.867619601
ontime0	20985.599921823
ontime1	20985.599921823
ontime2	20985.599921823
ontime3	20985.599921823
ontime6	20985.599921823
ontime7	20985.599921823
l2events	143963



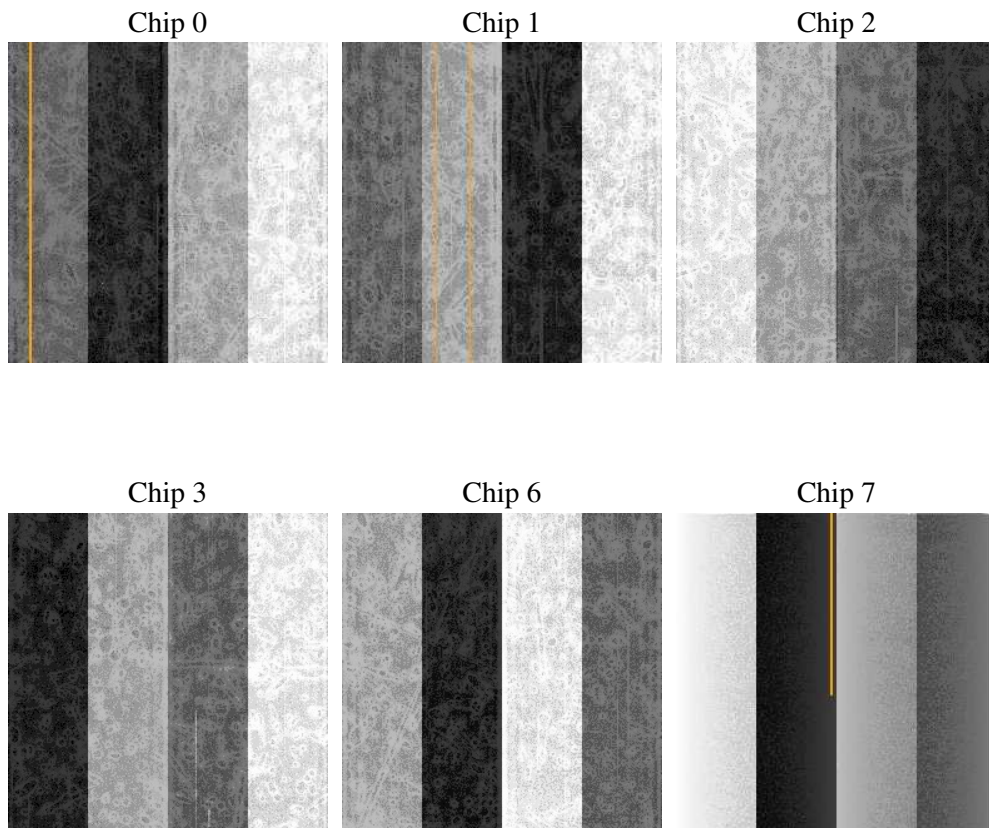
2 OBI

2.1 OBI

2.1.1 Images



2.1.2 Bias



2.1.3 Parameters

obi_num	2
ascdsver	7.6.9
caldbver	3.2.3
date	2006-09-15T03:18:38
revision	2

sched_exp_time	21000.000000
ontime	20991.992085785
ontime0	20991.992065847
ontime1	20991.992065847
ontime2	20991.992085785
ontime3	20991.992085785
ontime6	20991.992065847
ontime7	20991.992085785
l1events	860681

2.1.4 Events

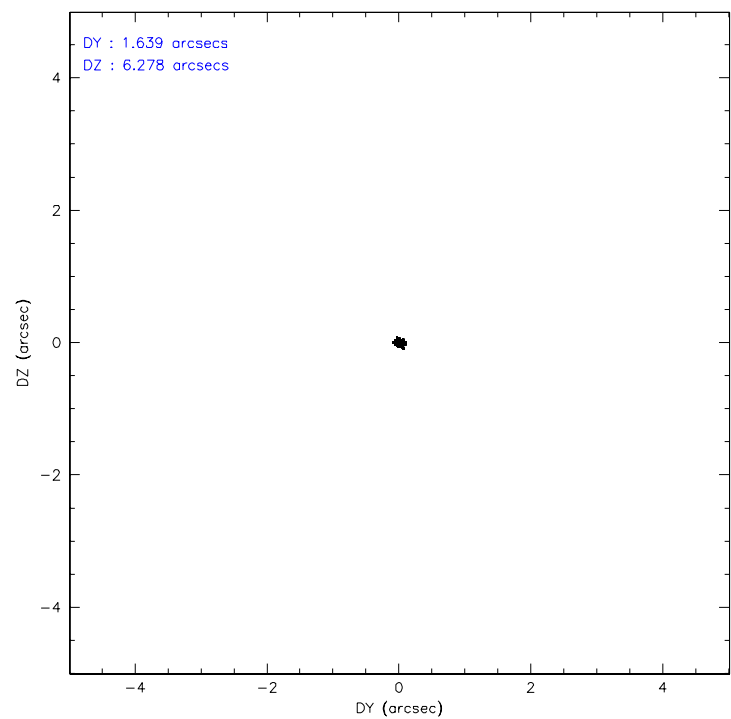
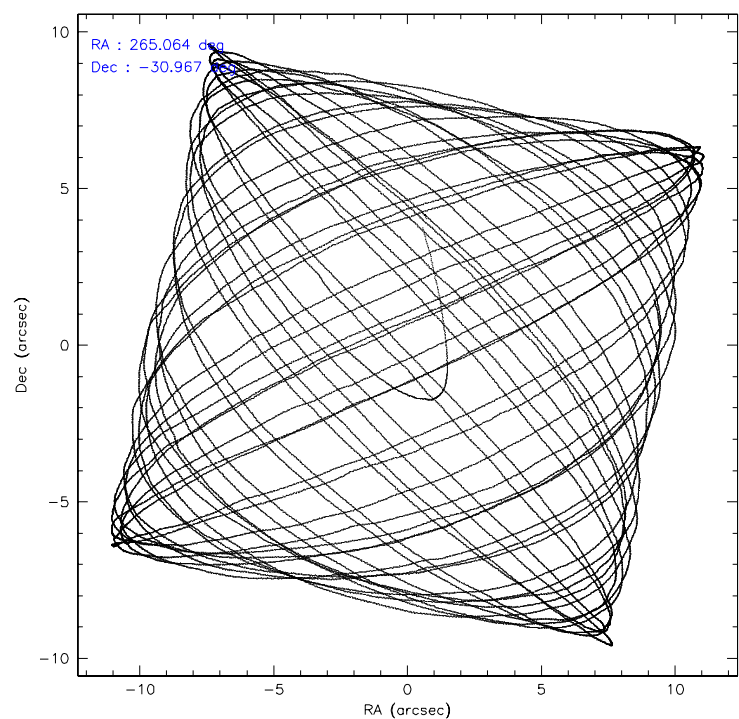
	ccd 0	ccd 1	ccd 2	ccd 3	ccd 6	ccd 7
level 1 events	125966	129503	139111	139419	146155	180527
rejected events	108352	111461	121949	122113	128373	110971
rejected %	86%	86%	87%	87%	87%	61%

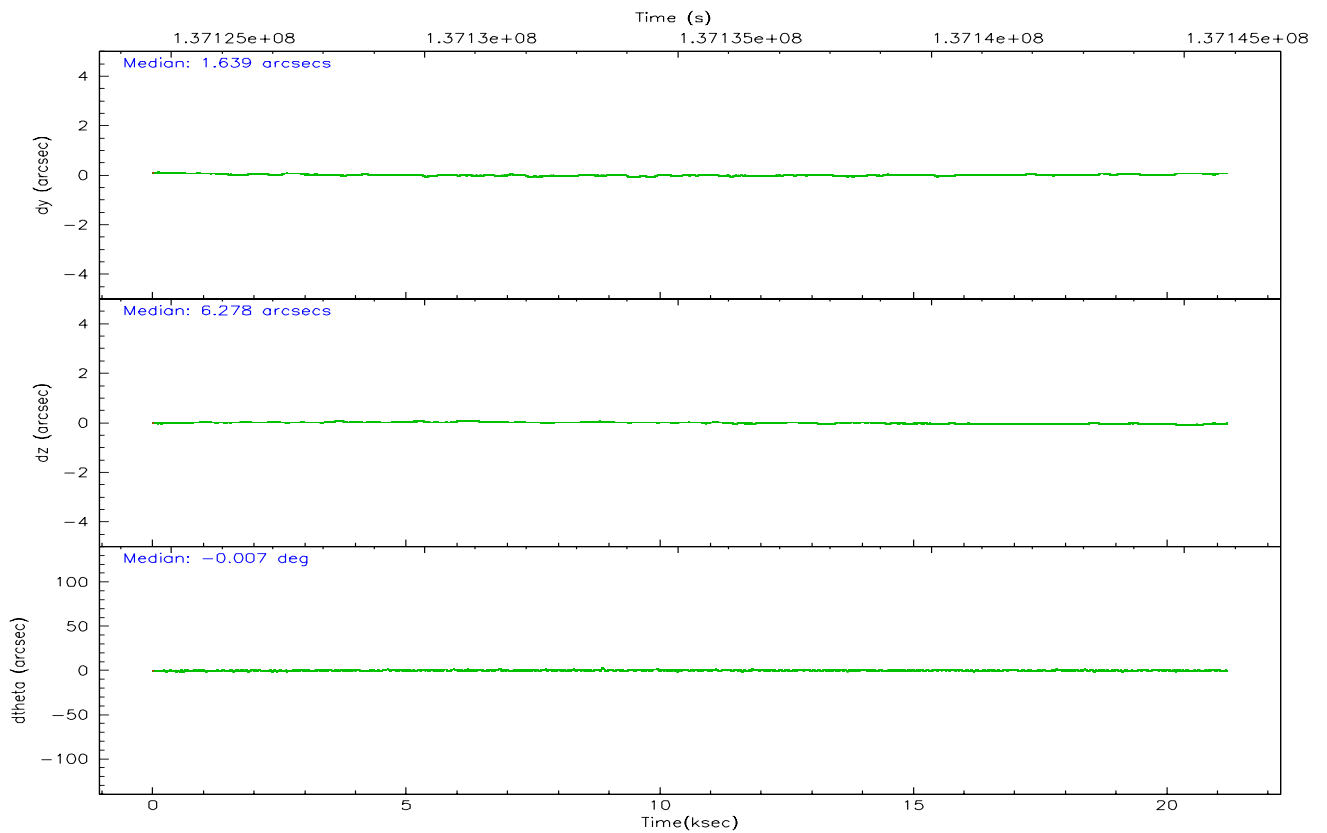
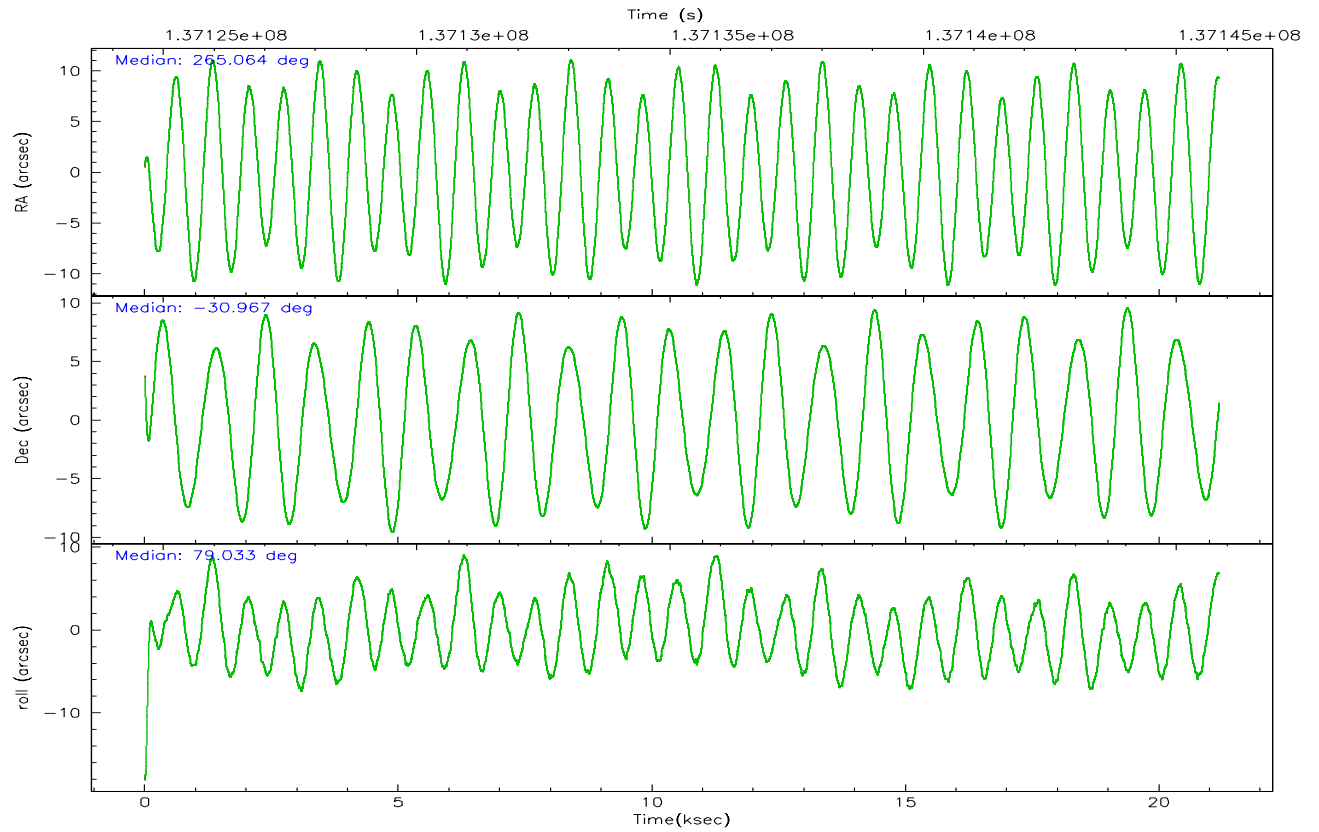
	ccd 0	ccd 1	ccd 2	ccd 3	ccd 6	ccd 7
grade 0 events	7805	7582	7701	7720	7568	4076
	6%	5%	5%	5%	5%	2%
grade 1 events	65	68	67	70	71	116
	0%	0%	0%	0%	0%	0%
grade 2 events	3600	3671	3597	3461	3697	17104
	2%	2%	2%	2%	2%	9%
grade 3 events	1656	1726	1520	1544	1578	3744
	1%	1%	1%	1%	1%	2%
grade 4 events	1608	1710	1492	1567	1621	3635
	1%	1%	1%	1%	1%	2%
grade 5 events	5108	5545	4838	5569	6258	12118
	4%	4%	3%	3%	4%	6%
grade 6 events	2952	3360	2855	3014	3321	41018
	2%	2%	2%	2%	2%	22%
grade 7 events	103172	105841	117041	116474	122041	98716
	81%	81%	84%	83%	83%	54%

2.2 Compared Parameters

Parameter	Planned	Actual	Parameter	Planned	Actual
Instrument	ACIS	ACIS	Obspar format version number	6	6
Detector	ACIS-012367	ACIS-012367	Obspar file type	PREDICTED	ACTUAL
Grating	NONE	NONE	Obspar update status	NONE	UPDATED
Data mode	FAINT	FAINT	Number of optional ACIS chips dropped	0	0
Observation mode	POINTING	POINTING	On-chip summing requested	N	N
Pointing RA	265.074411	265.0638835600669	Subarray requested	NONE	NONE
Pointing Dec	-30.992324	-30.96644637951922	Alternating exposures requested	N	N
Pointing Roll	78.835335	79.03859535879904	Primary exposure time	0.000000	3.2
SIM focus pos (mm)	-0.782348	-0.7809083437167272			
SIM defocus (mm)	0	0.001439871863259334			
SIM translation stage pos (mm)	-233.592463	-233.5874344608287			
SIM translation stage offset (mm)	0	-0.005018542100998502			
Observation start time	137124832.184000	137123858.69007			
Observation start date	2002-05-07T02:12:48	2002-05-07T01:57:38			
Observation end time	137145832.184000	137146544.5035			
Observation end date	2002-05-07T08:02:48	2002-05-07T08:15:44			
Read mode	TIMED	TIMED			

2.3 Aspect



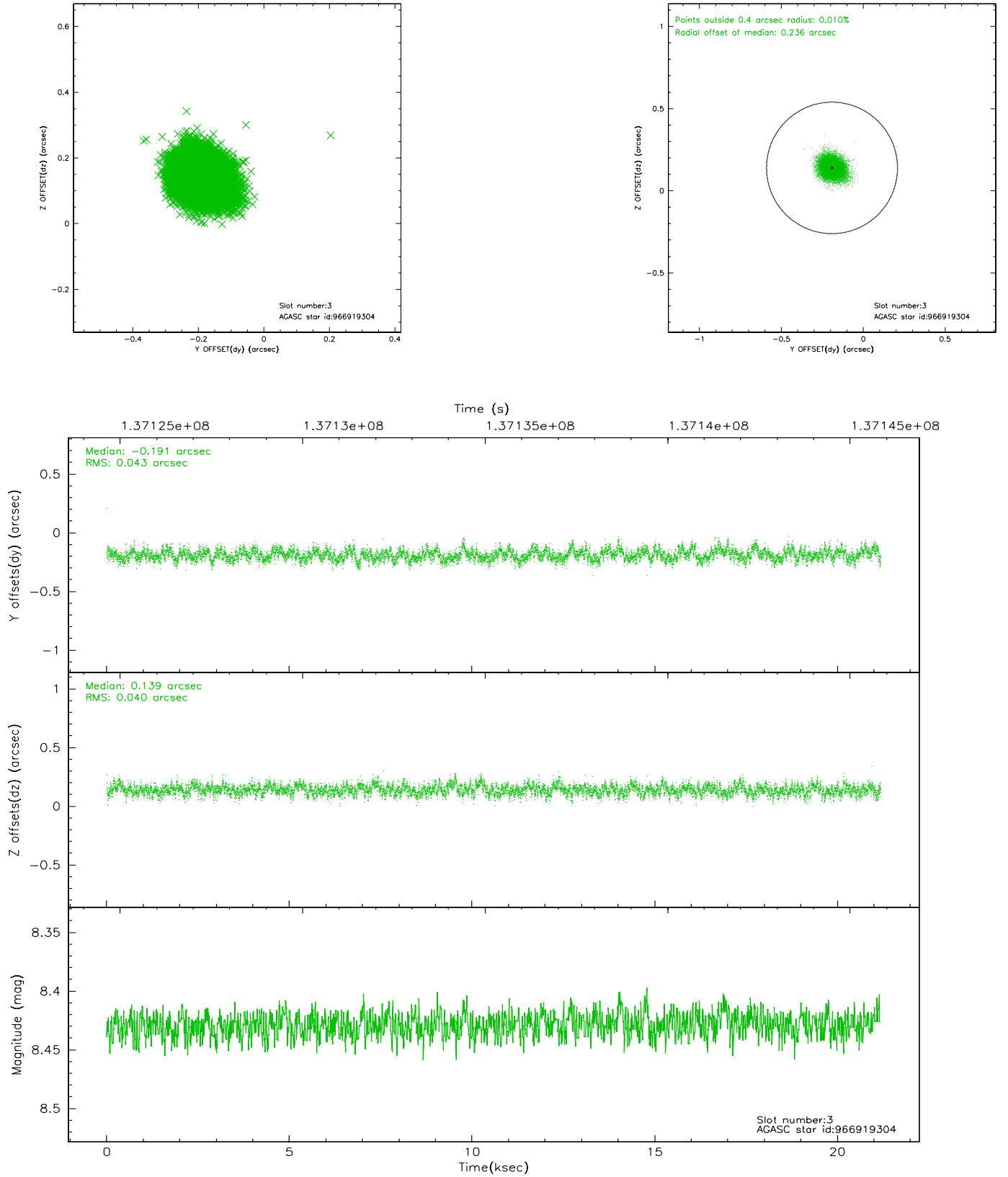


Slot Statistics

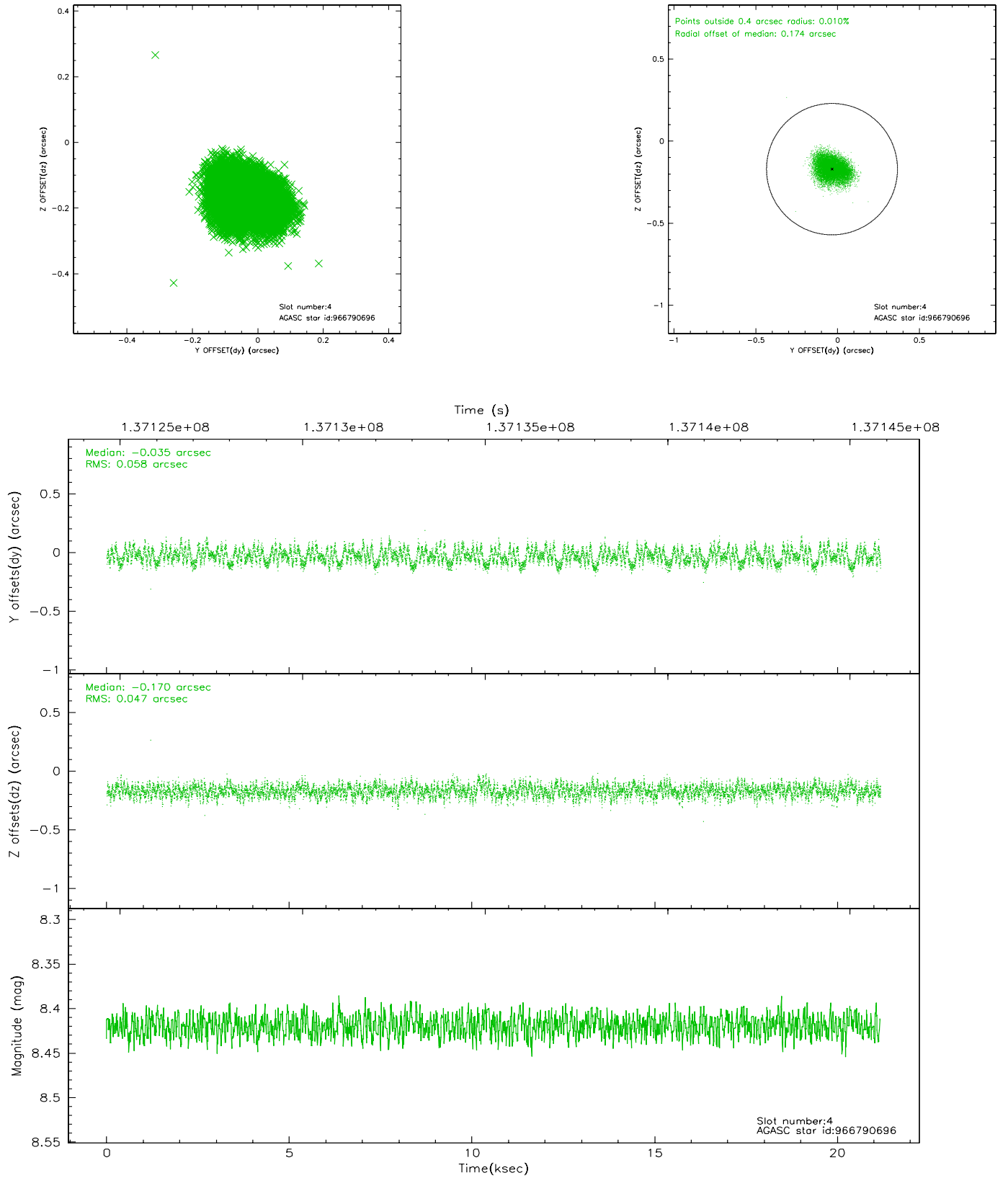
slot	status	id	mag	n_pts	med_dy	med_dz	dr1	dr2	ra	dec	mean_y	mean_z
0	FID	ACIS-I-1	7.25	5166	-0.022	-0.105	0.007	0.011	0.000000	0.000000	938.25	-829.67
1	FID	ACIS-I-3	7.45	5166	0.016	0.227	0.007	0.011	0.000000	0.000000	55.90	-962.81
2	FID	ACIS-I-6	7.25	5167	-0.083	-0.054	0.006	0.011	0.000000	0.000000	403.67	1712.04
3	GUIDE	966919304	8.43	10334	-0.191	0.139	0.062	0.101	265.660763	-30.717261	1319.67	-1589.11
4	GUIDE	966790696	8.42	10332	-0.035	-0.170	0.080	0.124	264.462516	-30.909486	-77.09	1910.80
5	GUIDE	966920024	8.85	10328	-0.102	0.125	0.079	0.122	265.515080	-30.492187	2029.96	-992.37
6	GUIDE	966793104	9.02	10325	0.091	0.064	0.084	0.134	265.489379	-31.350728	-1019.32	-1501.86
7	GUIDE	966794320	9.54	10326	0.242	-0.157	0.130	0.210	264.305848	-31.385846	-1853.90	2041.14

2.4 Star Slots

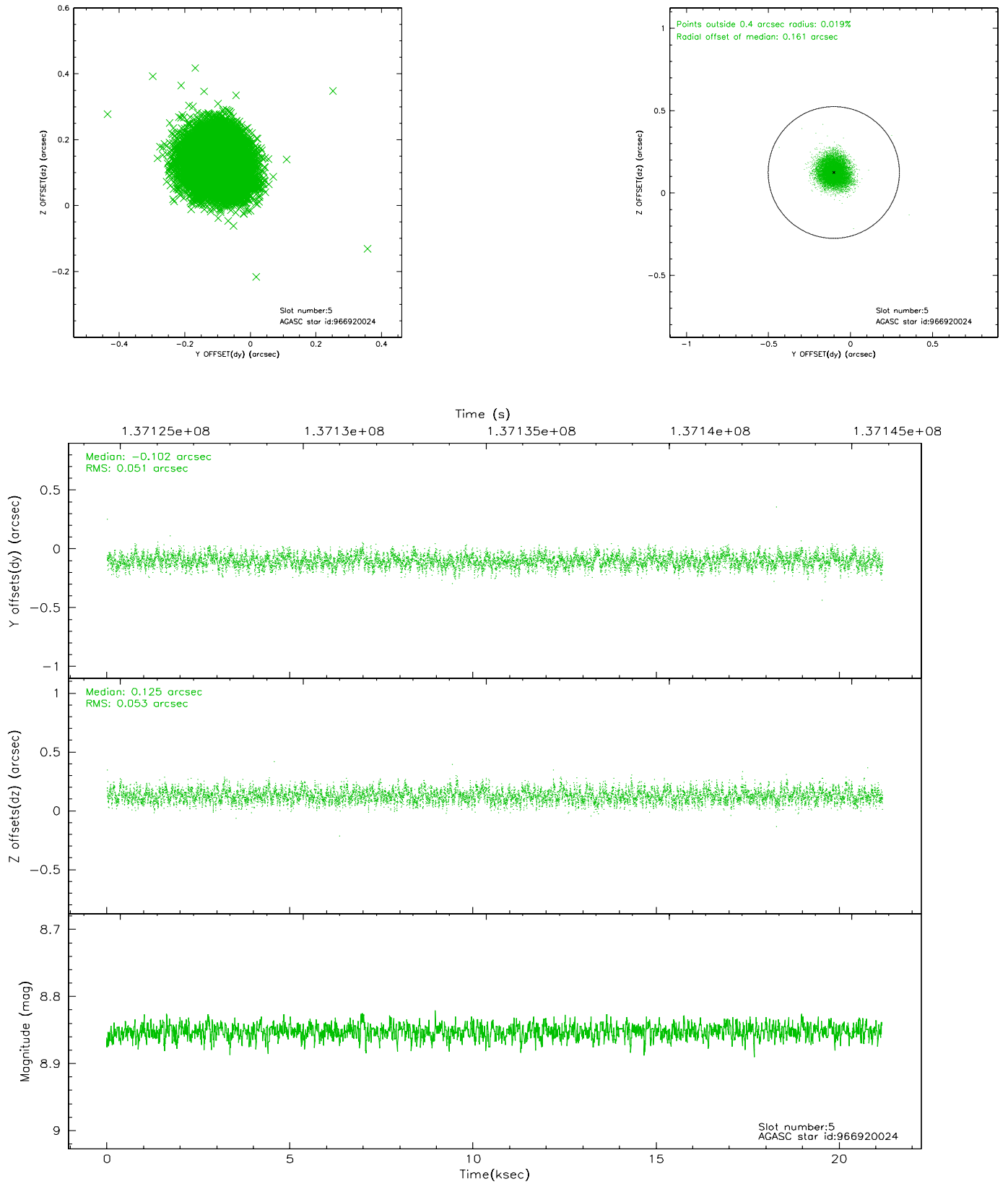
2.4.1 Slot 3



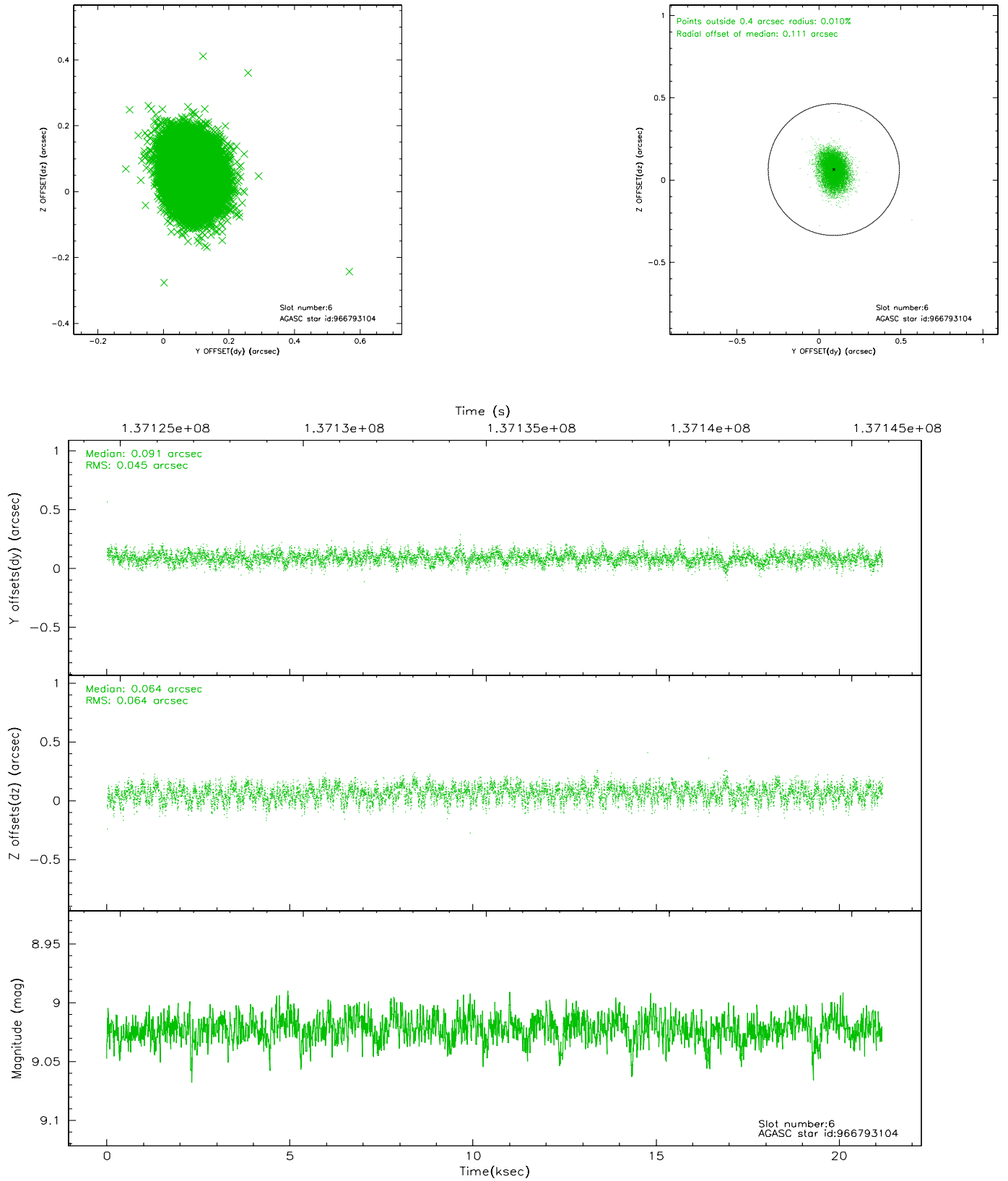
2.4.2 Slot 4



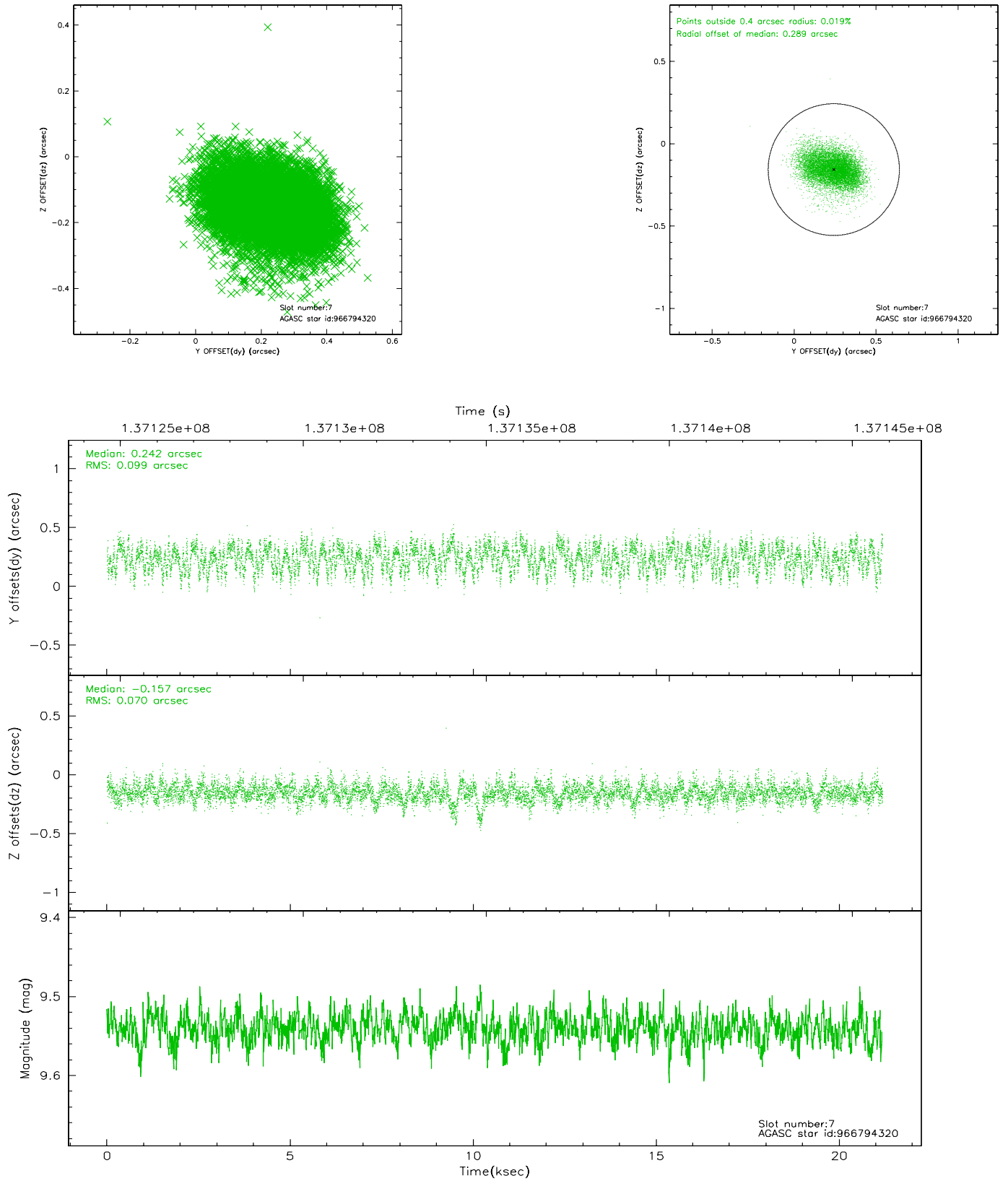
2.4.3 Slot 5



2.4.4 Slot 6

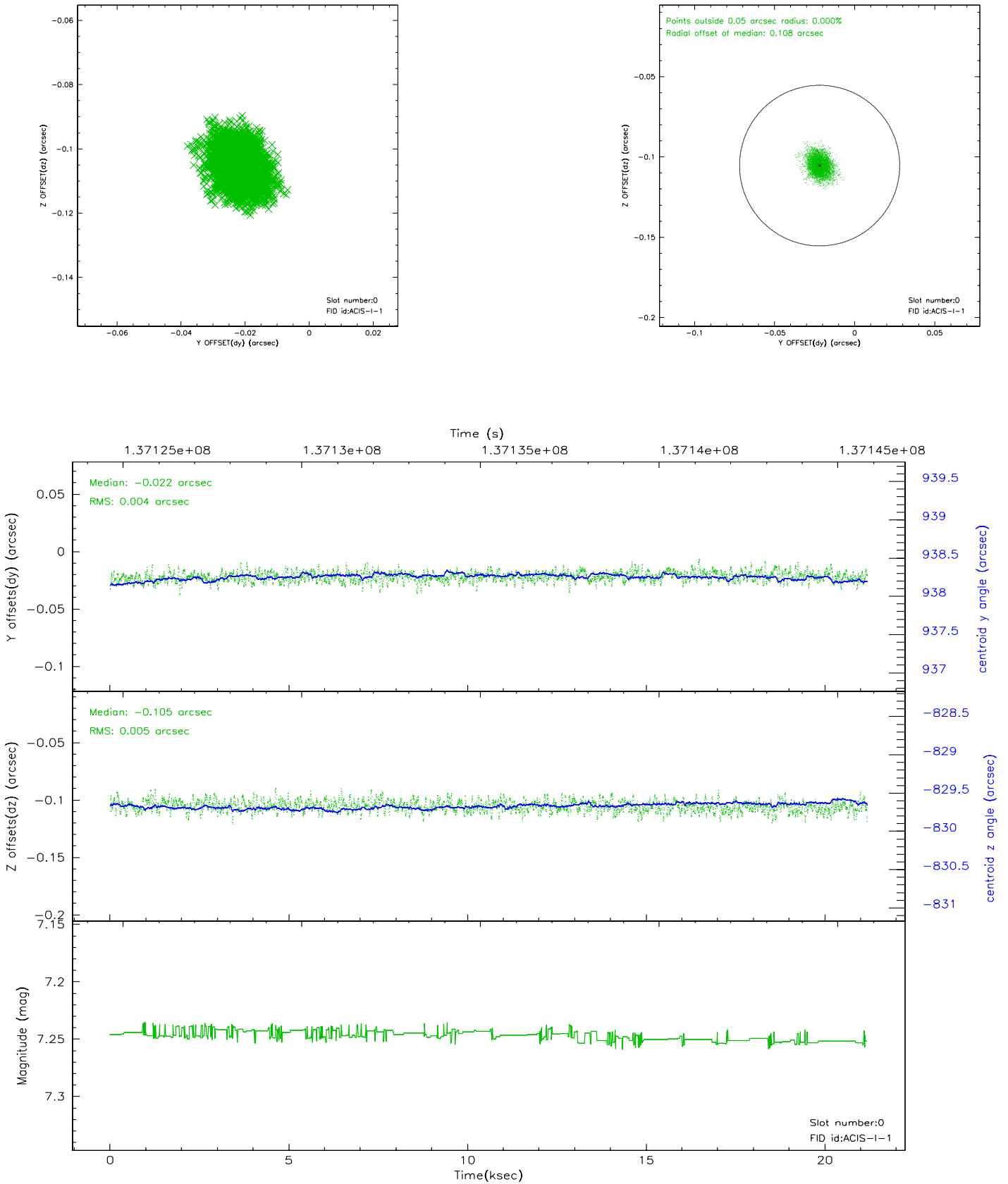


2.4.5 Slot 7

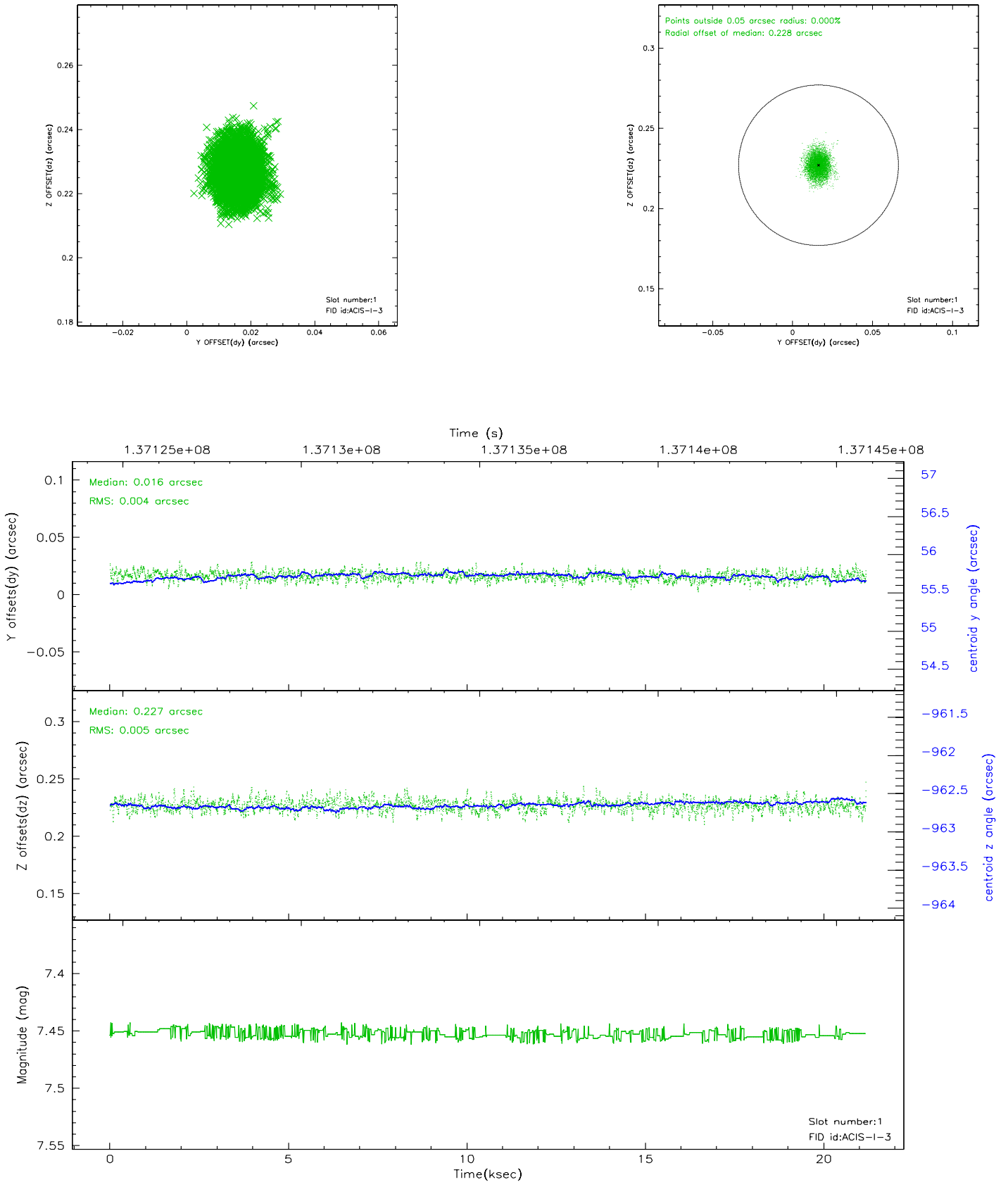


2.5 FID Slots

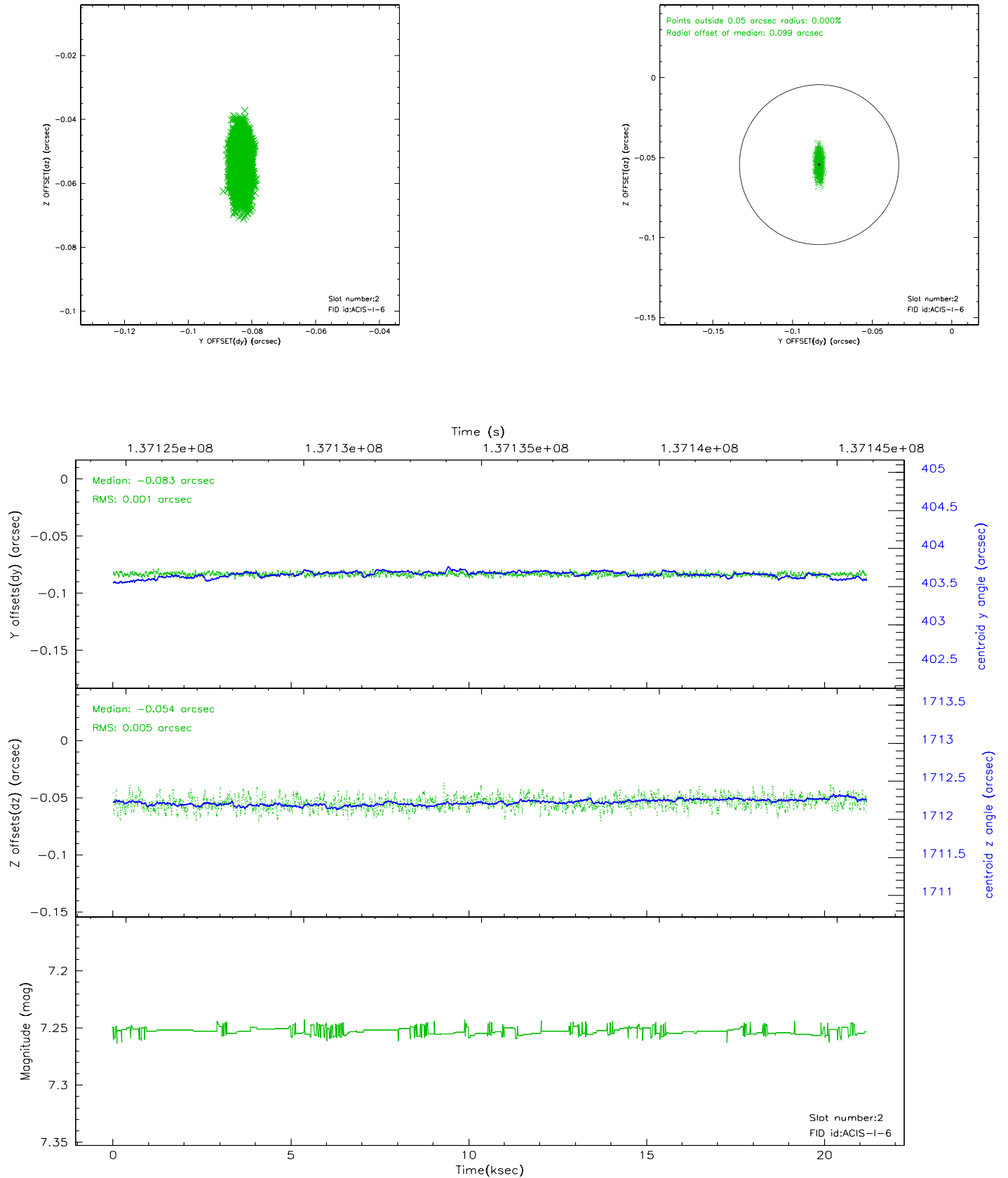
2.5.1 Slot 0



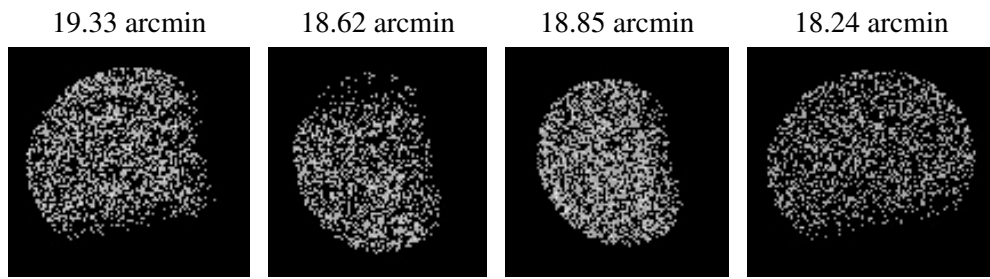
2.5.2 Slot 1



2.5.3 Slot 2



3 Point Sources



A Summary

A.1 Status

V&V Scientist	Jen Lauer
V&V Date (YYYY-MM-DD)	2006.09.18
V&V Edition	1
V&V Disposition and Status	OK
V&V Charge Time	20.988

A.2 Comments