

V&V Reference Report

L2 ASCDS Version : 8.4.5

Observation 9976 - L2 Version 2
Chandra X-Ray Center

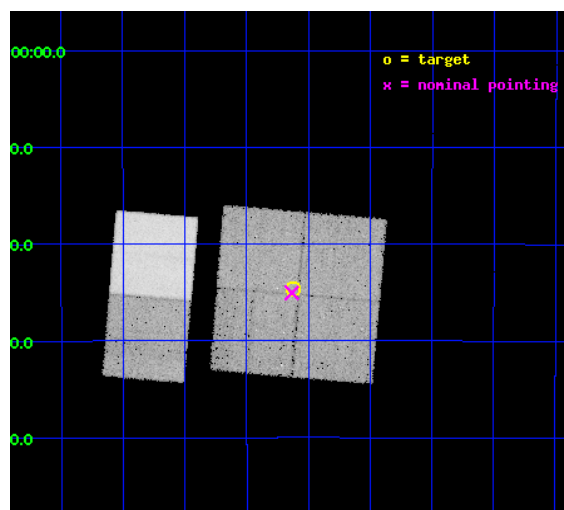
L2 Processing Date : Jun 11 2012

Contents

1	Front	2
2	OBI	3
2.1	OBI	3
2.1.1	Images	3
2.1.2	Bias	3
2.1.3	Parameters	4
2.1.4	Events	4
2.2	Compared Parameters	5
2.3	Aspect	6
2.4	Star Slots	9
2.4.1	Slot 3	9
2.4.2	Slot 4	10
2.4.3	Slot 5	11
2.4.4	Slot 6	12
2.4.5	Slot 7	13
2.5	FID Slots	14
2.5.1	Slot 0	14
2.5.2	Slot 1	15
2.5.3	Slot 2	16
A	Summary	17
A.1	Status	17
A.2	Comments	17

1 Front

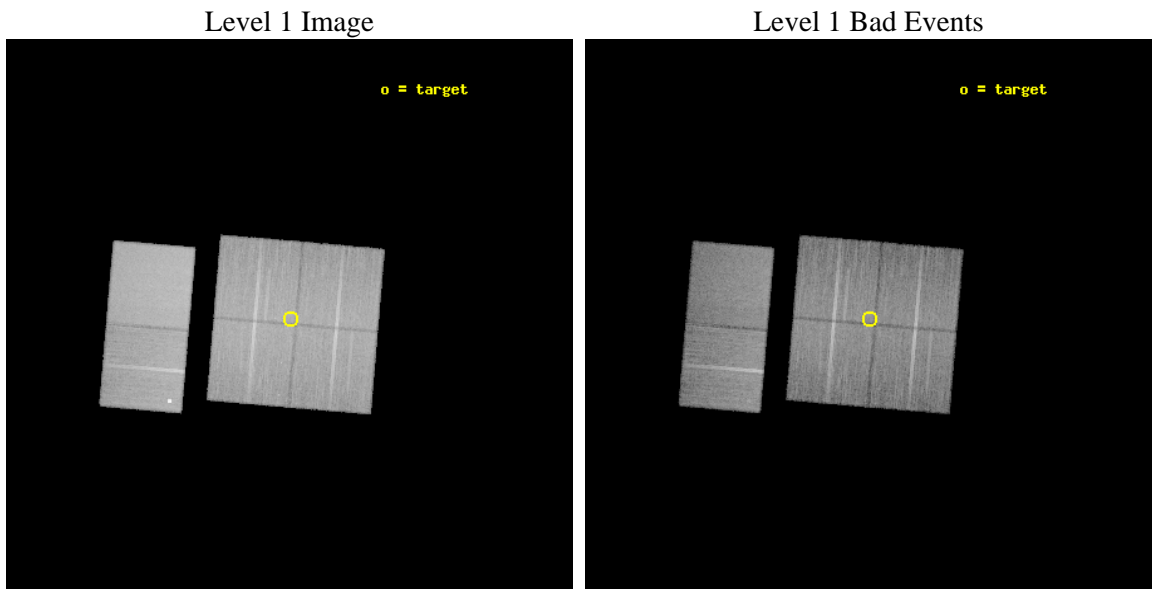
seq_num	400940	Sequence number
obs_id	9976	Observation id
title	The brightest unidentified Galactic sources of the new H.E.S.S. survey	Proposal title
observer	Dr Omar Tibolla	Principal investigator
object	HESS J1741-302	Source name
dtcycle	0	
cycle	P	events from which exps? Prim/Second/Both
ra_targ	265.28	Observer's specified target RA [deg]
dec_targ	-30.41	Observer's specified target Dec [deg]
ra_nom	265.28353910621	Nominal RA [deg]
dec_nom	-30.417481934052	Nominal Dec [deg]
roll_nom	274.89477848033	Nominal Roll [deg]
revision	2	Processing version of data
ontime	19947.733932674	Sum of GTIs [s]
livetime	19695.143714535	Livetime [s]
ontime0	19947.610812664	Sum of GTIs [s]
ontime1	19947.651852667	Sum of GTIs [s]
ontime2	19944.451882362	Sum of GTIs [s]
ontime3	19947.733932674	Sum of GTIs [s]
ontime6	19947.816012681	Sum of GTIs [s]
ontime7	19947.774972677	Sum of GTIs [s]
l2events	241951	Number of level 2 events



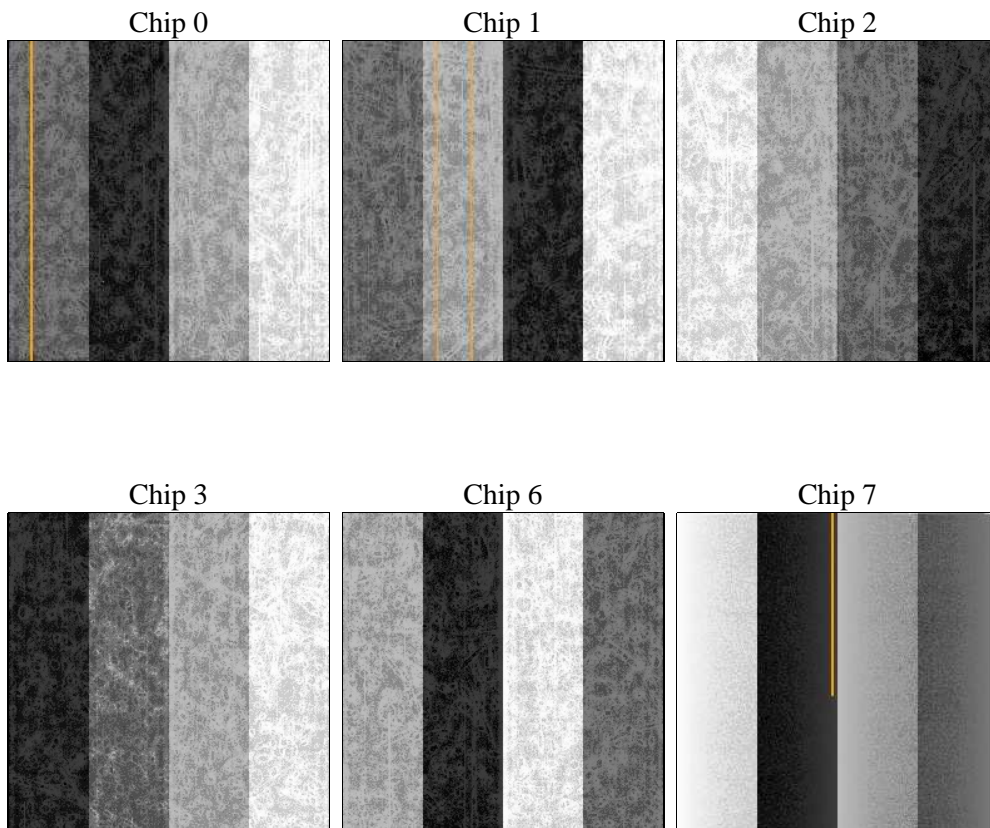
2 OBI

2.1 OBI

2.1.1 Images



2.1.2 Bias



2.1.3 Parameters

obi_num	1	Obi number	sched_exp_time	20000.000000	[s] Scheduled observation exposure time
ascdsver	8.4.5	Processing system revision	ontime	19947.733932674	Sum of GTIs [s]
caldsver	4.4.10	 	ontime0	19947.610812664	Sum of GTIs [s]
date	2012-06-11T14:19:04	Date and time of file creation	ontime1	19947.651852667	Sum of GTIs [s]
revision	2	Processing version of data	ontime2	19944.451882362	Sum of GTIs [s]
			ontime3	19947.733932674	Sum of GTIs [s]
			ontime6	19947.816012681	Sum of GTIs [s]
			ontime7	19947.774972677	Sum of GTIs [s]
			l1events	1340352	Number of level 1 events

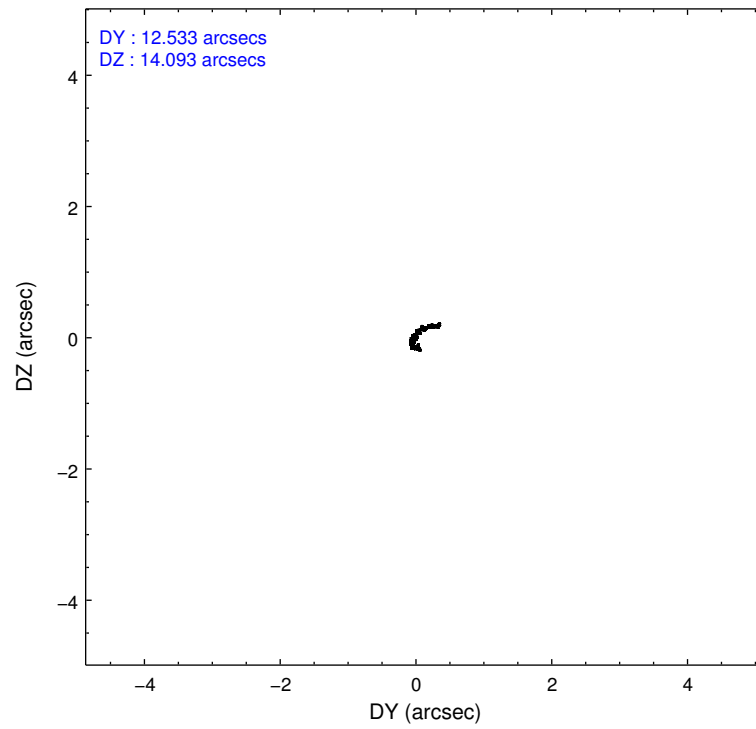
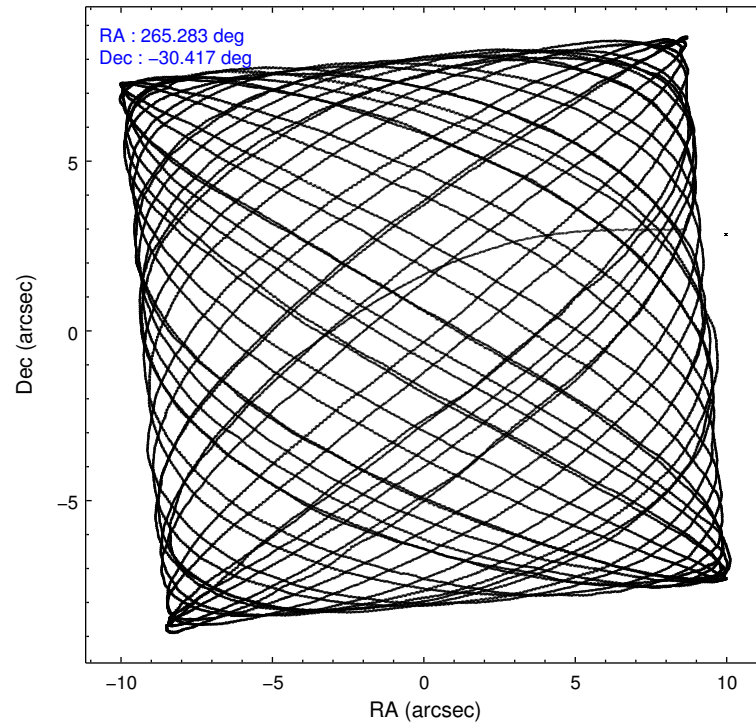
2.1.4 Events

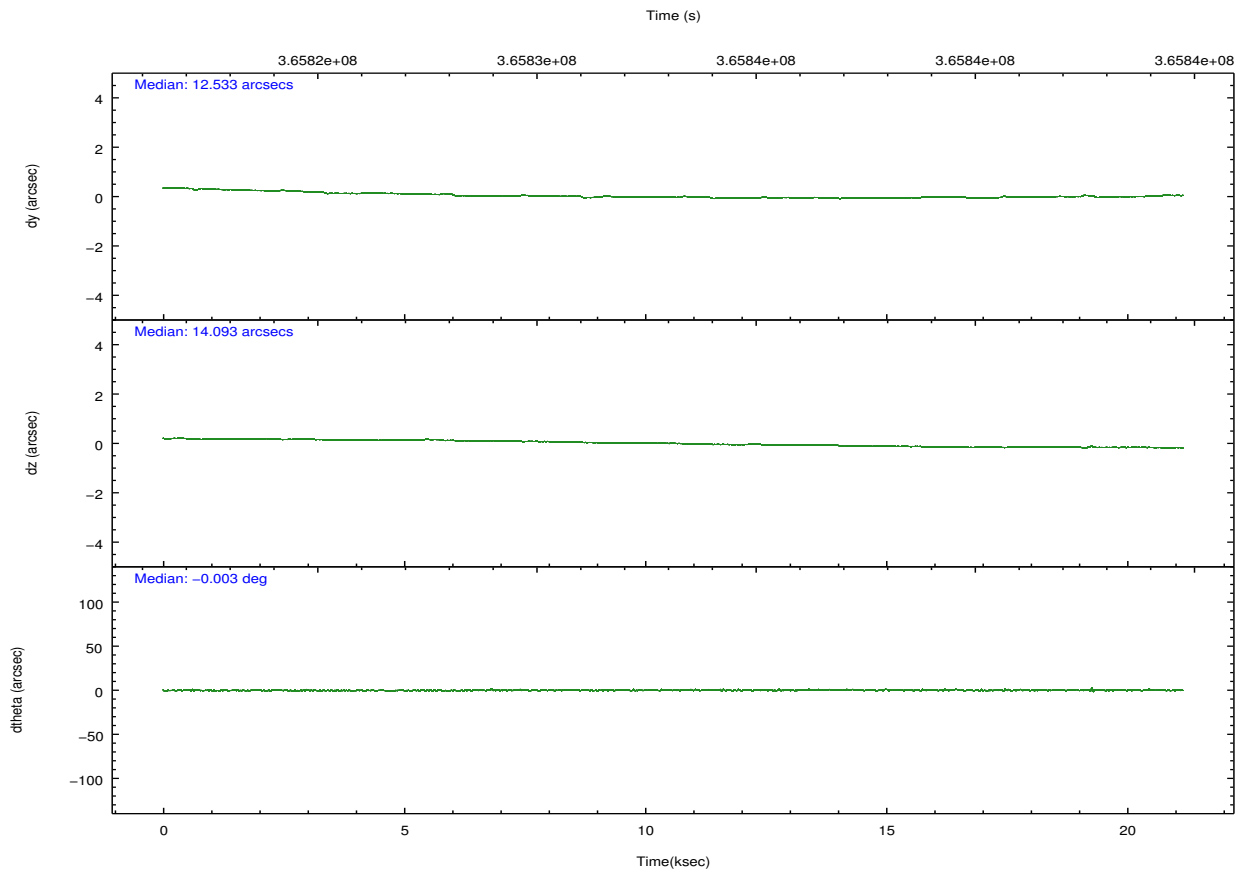
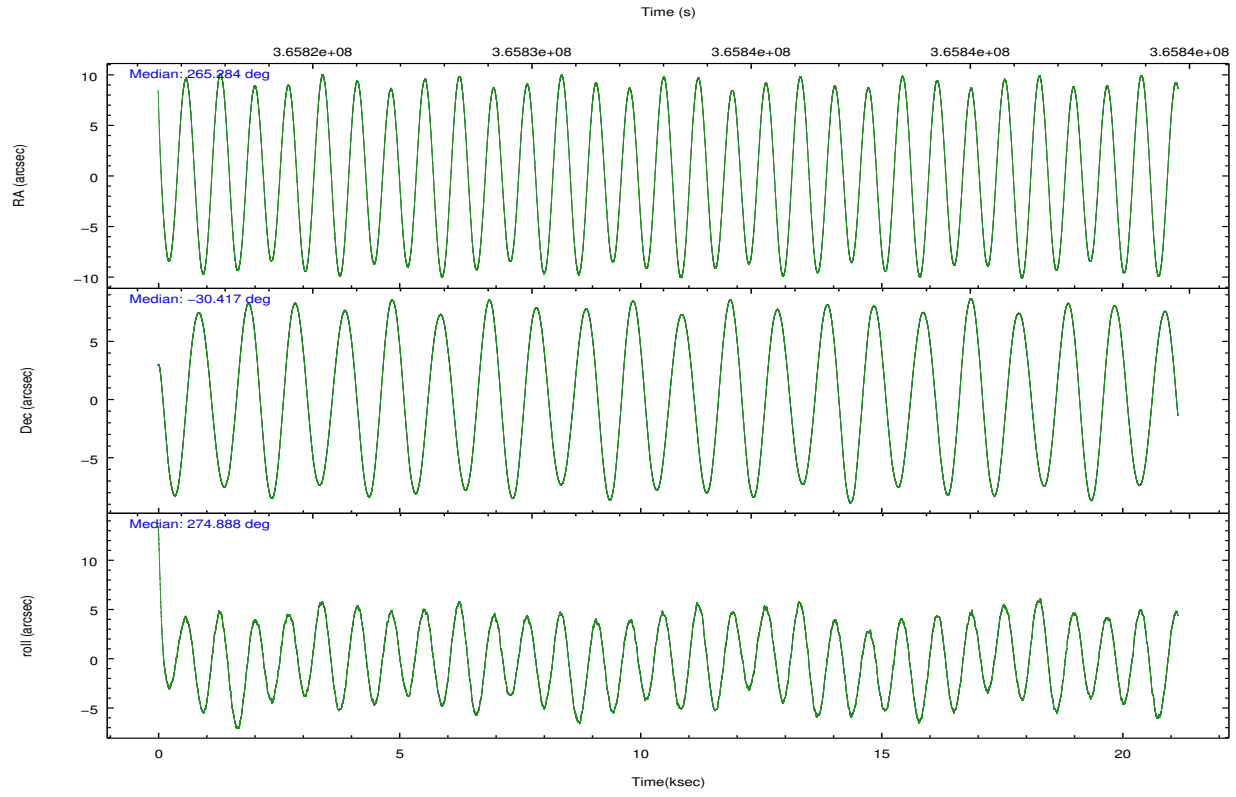
	ccd 0	ccd 1	ccd 2	ccd 3	ccd 6	ccd 7		ccd 0	ccd 1	ccd 2	ccd 3	ccd 6	ccd 7
level 1 events	196105	198536	210683	211416	226702	296910	grade 0 events	12405	11803	11669	12887	16731	10478
rejected events	168237	169212	184328	183542	193634	172856		6%	5%	5%	6%	7%	3%
rejected %	85%	85%	87%	86%	85%	58%	grade 1 events	144	110	151	165	217	344
								0%	0%	0%	0%	0%	0%
							grade 2 events	6127	6820	5638	5425	6034	25598
								3%	3%	2%	2%	2%	8%
							grade 3 events	2444	2571	2342	2475	2442	10267
								1%	1%	1%	1%	1%	3%
							grade 4 events	2331	2596	2389	2463	2405	10440
								1%	1%	1%	1%	1%	3%
							grade 5 events	8882	9549	8463	10044	10548	27547
								4%	4%	4%	4%	4%	9%
							grade 6 events	4566	5541	4319	4631	5462	67291
								2%	2%	2%	2%	2%	22%
							grade 7 events	159206	159546	175712	173326	182863	144945
								81%	80%	83%	81%	80%	48%

2.2 Compared Parameters

Parameter	Planned	Actual	Parameter	Planned	Actual
Instrument	ACIS	ACIS	Obspar format version number	7	7
Detector	ACIS-012367	ACIS-012367	Obspar file type	PREDICTED	ACTUAL
Grating	NONE	NONE	Obspar update status	NONE	UPDATED
Data mode	FAINT	FAINT	CCD I0 on	Y	Y
Observation mode	POINTING	POINTING	CCD I1 on	Y	Y
[deg] Pointing RA	265.265200	265.2835391062097	CCD I2 on	Y	Y
[deg] Pointing Dec	-30.394999	-30.41748193405215	CCD I3 on	Y	Y
[deg] Pointing Roll	274.676810	274.8947784803281	CCD S0 on	N	N
[mm] SIM focus pos	-0.782348	-0.7809083437167272	CCD S1 on	N	N
[mm] SIM defocus	0	0.001439871863259334	CCD S2 on	O2	Y
[mm] SIM translation stage pos	-233.592463	-233.5874344608287	CCD S3 on	O1	Y
[mm] SIM translation stage offset	0	-0.005018542100998502	CCD S4 on	N	N
[s] Observation start time (MET)	365823672.184000	365821649.61421	CCD S5 on	N	N
Observation start date	2009-08-05T01:40:06	2009-08-05T01:07:29	Number of optional ACIS chips dropped	0	0
[s] Observation end time (MET)	365843672.184000	365844007.94033	On-chip summing requested	N	N
Observation end date	2009-08-05T07:13:26	2009-08-05T07:20:07	Subarray requested	NONE	NONE
Read mode	TIMED	TIMED	Alternating exposures requested	N	N
			[s] Primary exposure time	0.000000	3.2

2.3 Aspect



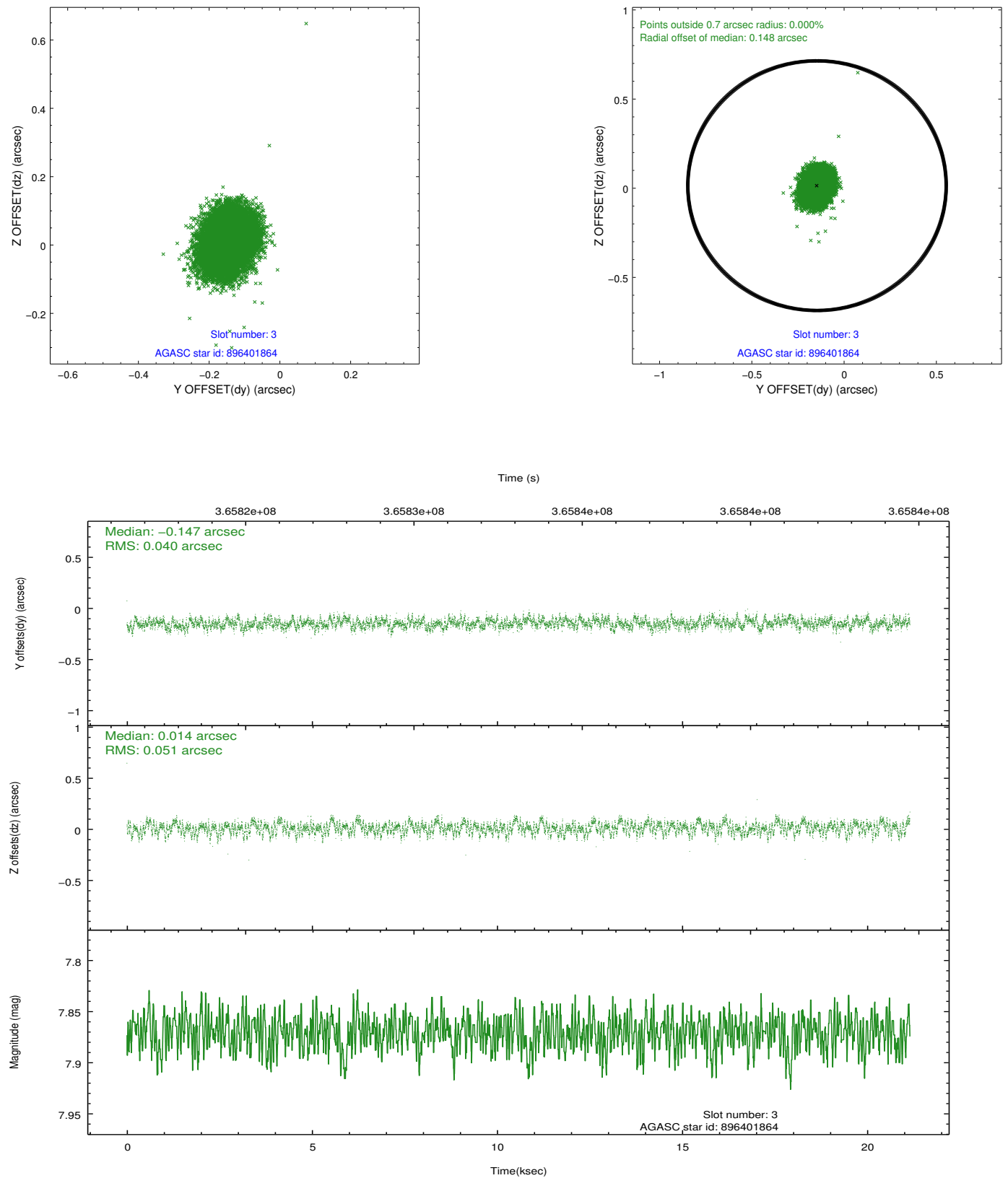


Slot Statistics

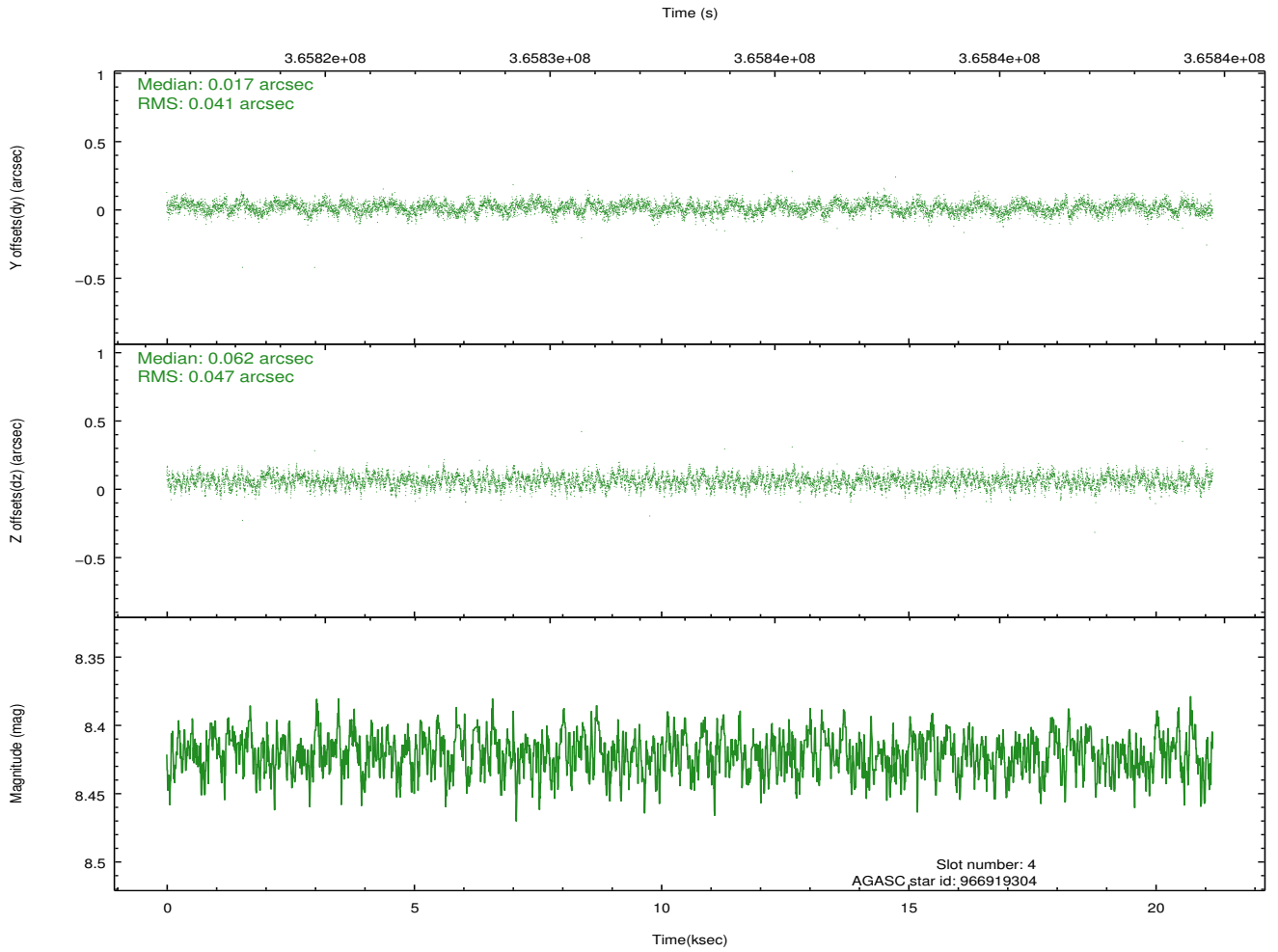
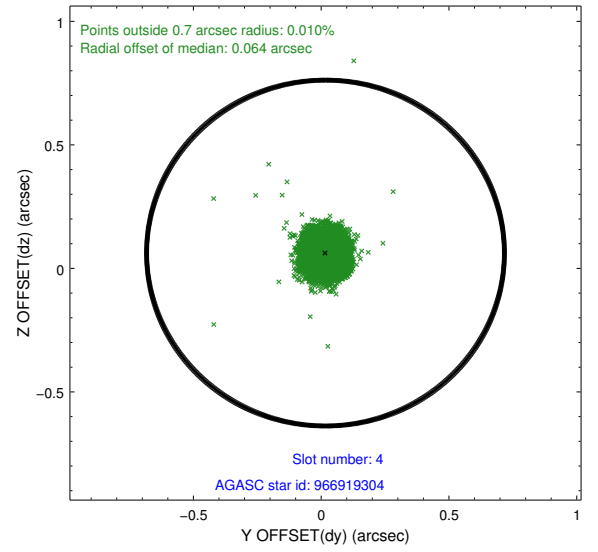
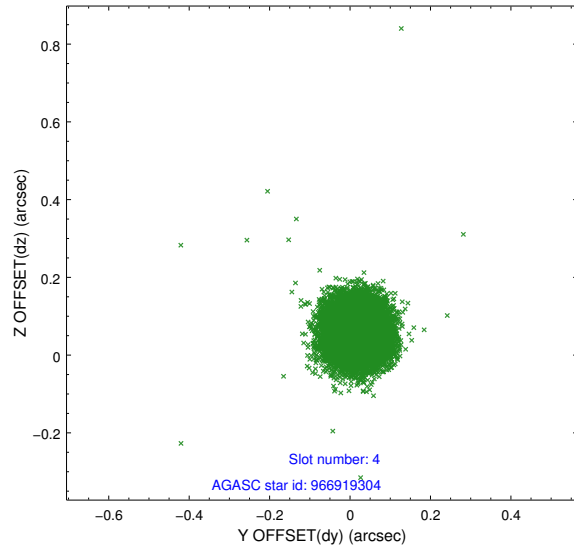
slot	status	id	mag	n_pts	med_dy	med_dz	dr1	dr2	ra	dec	mean_y	mean_z
0	FID	ACIS-I-1	7.04	5160	0.017	0.026	0.008	0.013	0.000000	0.000000	926.98	-837.63
1	FID	ACIS-I-5	7.03	5160	-0.177	0.037	0.009	0.016	0.000000	0.000000	-1821.26	1059.74
2	FID	ACIS-I-6	7.04	5159	0.068	0.007	0.010	0.016	0.000000	0.000000	392.35	1704.44
3	GUIDE	896401864	7.87	10317	-0.147	0.014	0.069	0.109	264.861768	-29.959752	-1661.76	-1126.68
4	GUIDE	966919304	8.42	10313	0.017	0.062	0.065	0.103	265.660763	-30.717261	1258.29	1125.56
5	GUIDE	966920024	8.83	10309	-0.125	-0.016	0.085	0.135	265.515080	-30.492187	412.99	744.18
6	GUIDE	966924920	8.09	10317	0.096	0.009	0.067	0.108	265.875401	-30.176961	-622.19	1956.35
7	GUIDE	966788720	8.36	10316	0.163	-0.069	0.069	0.117	264.555693	-31.018346	2065.76	-2364.91

2.4 Star Slots

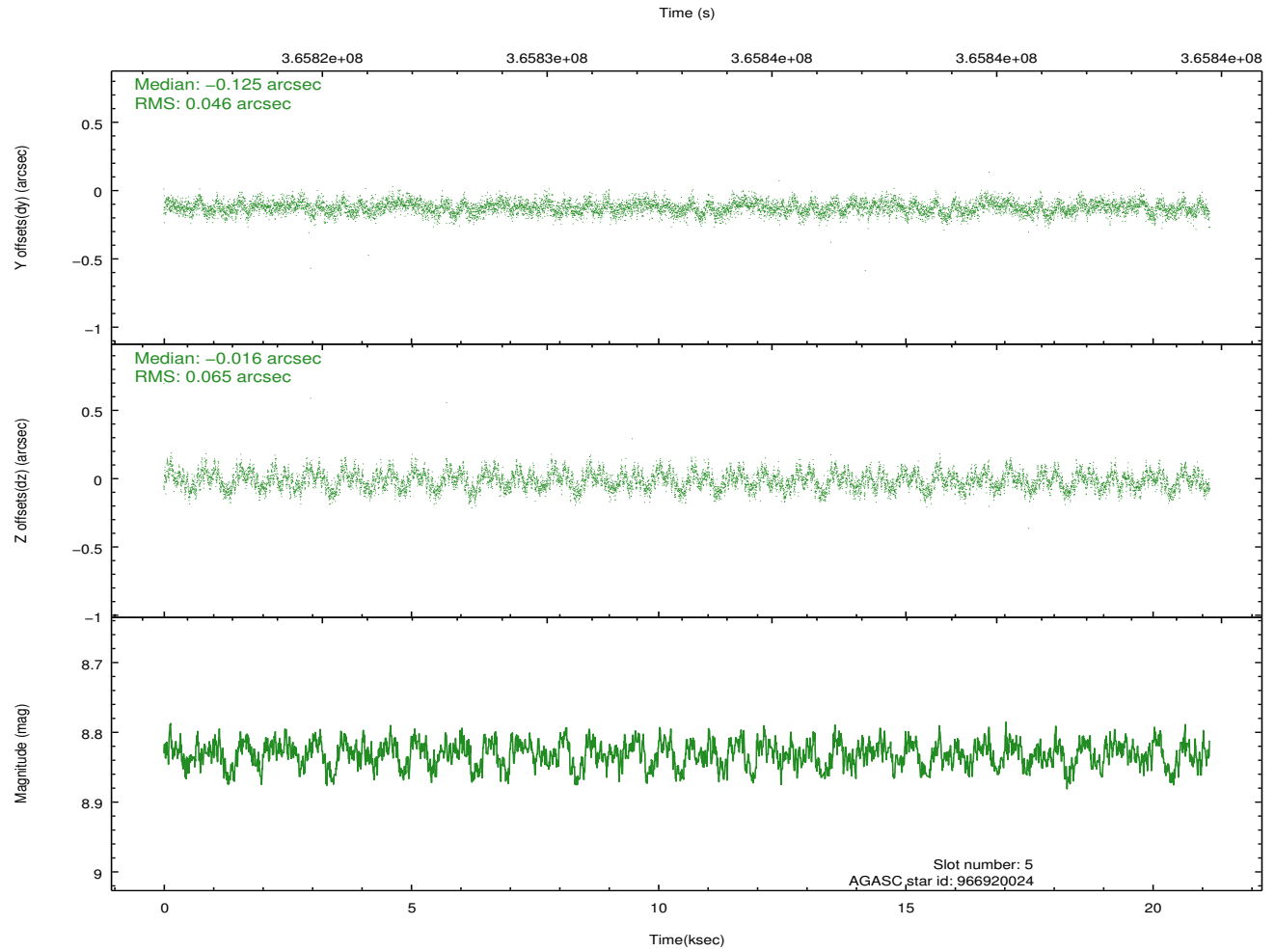
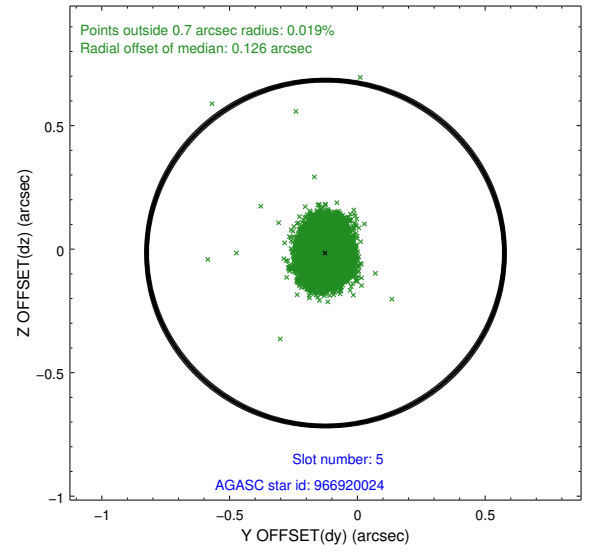
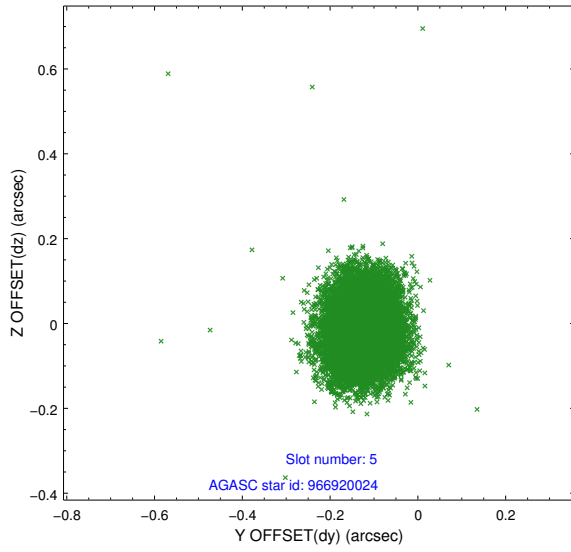
2.4.1 Slot 3



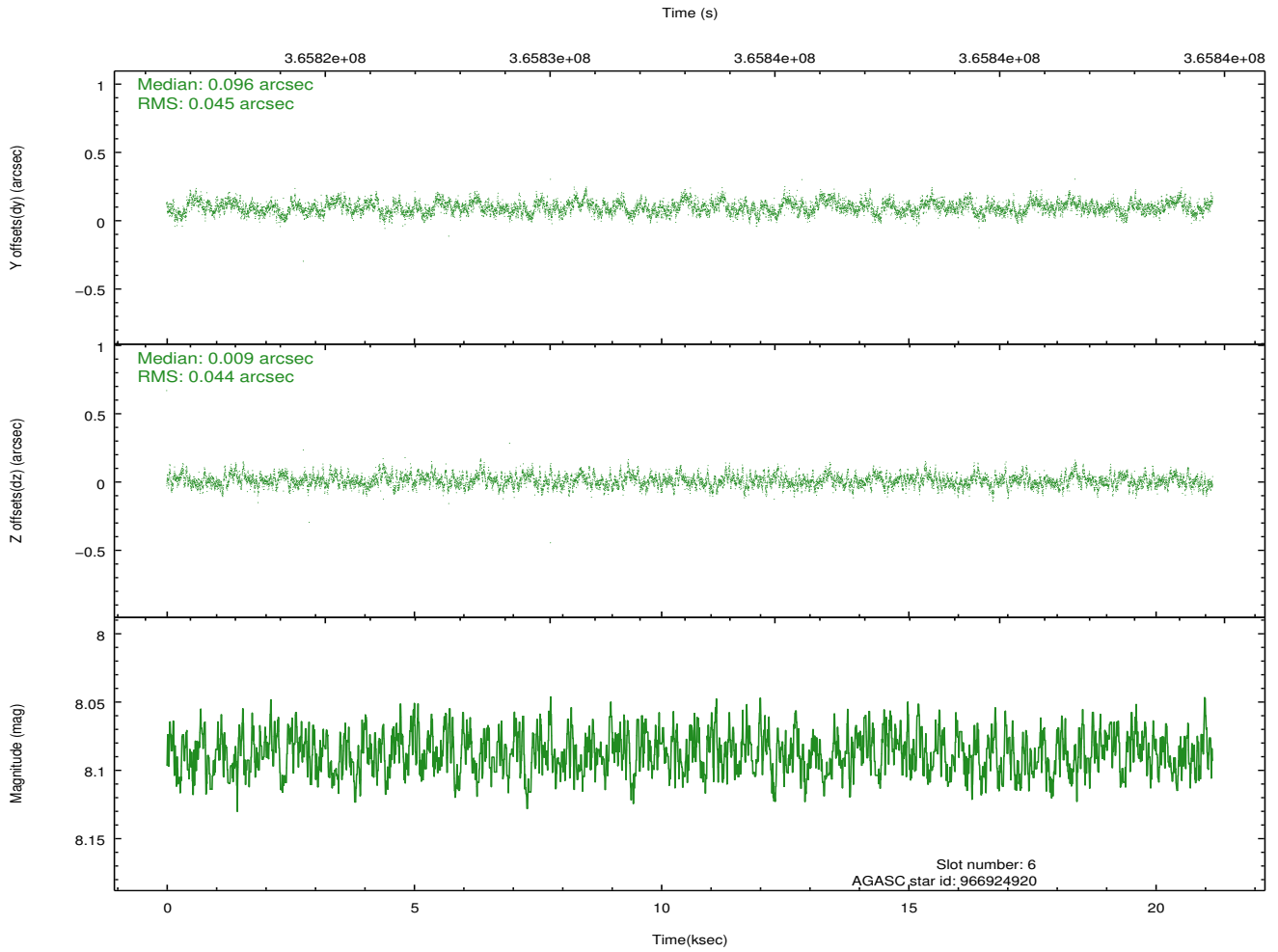
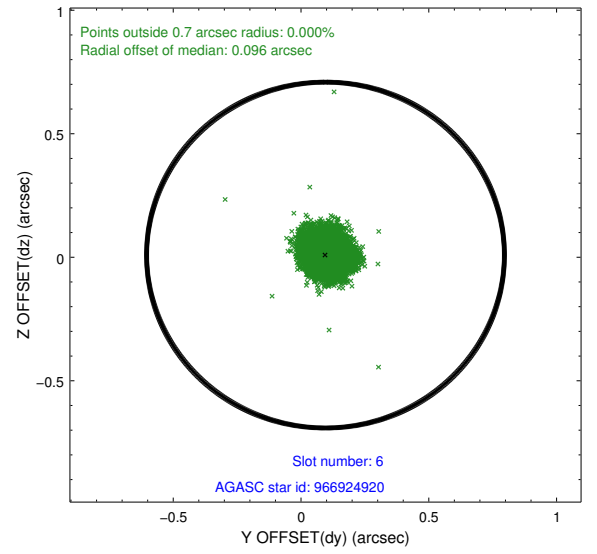
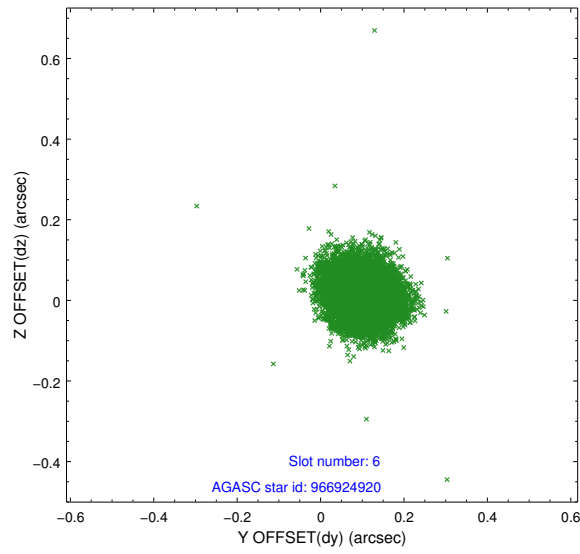
2.4.2 Slot 4



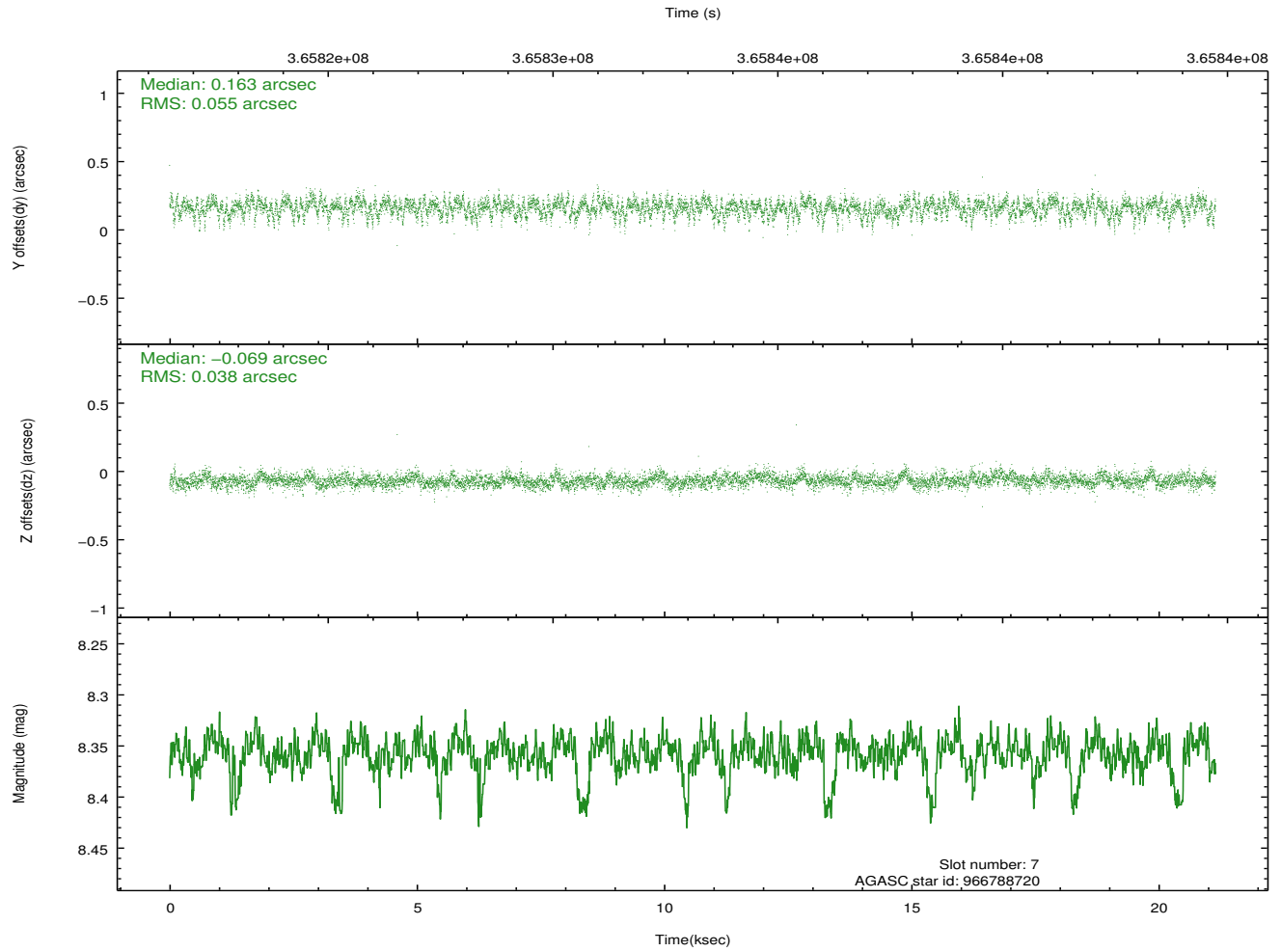
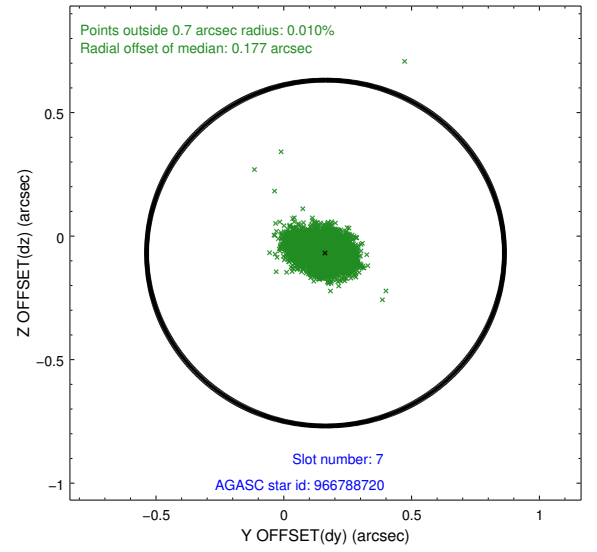
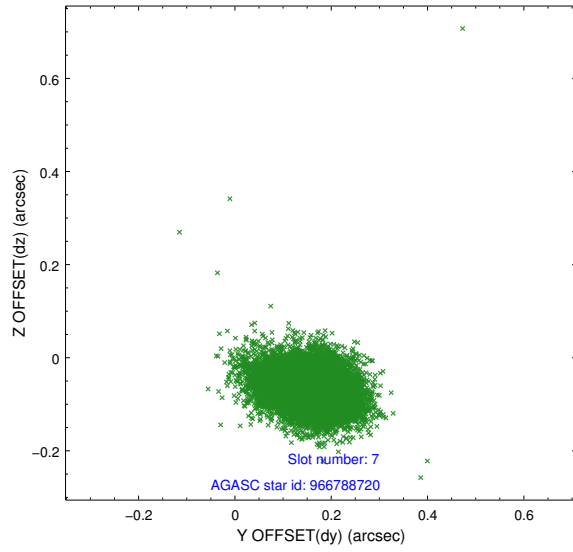
2.4.3 Slot 5



2.4.4 Slot 6

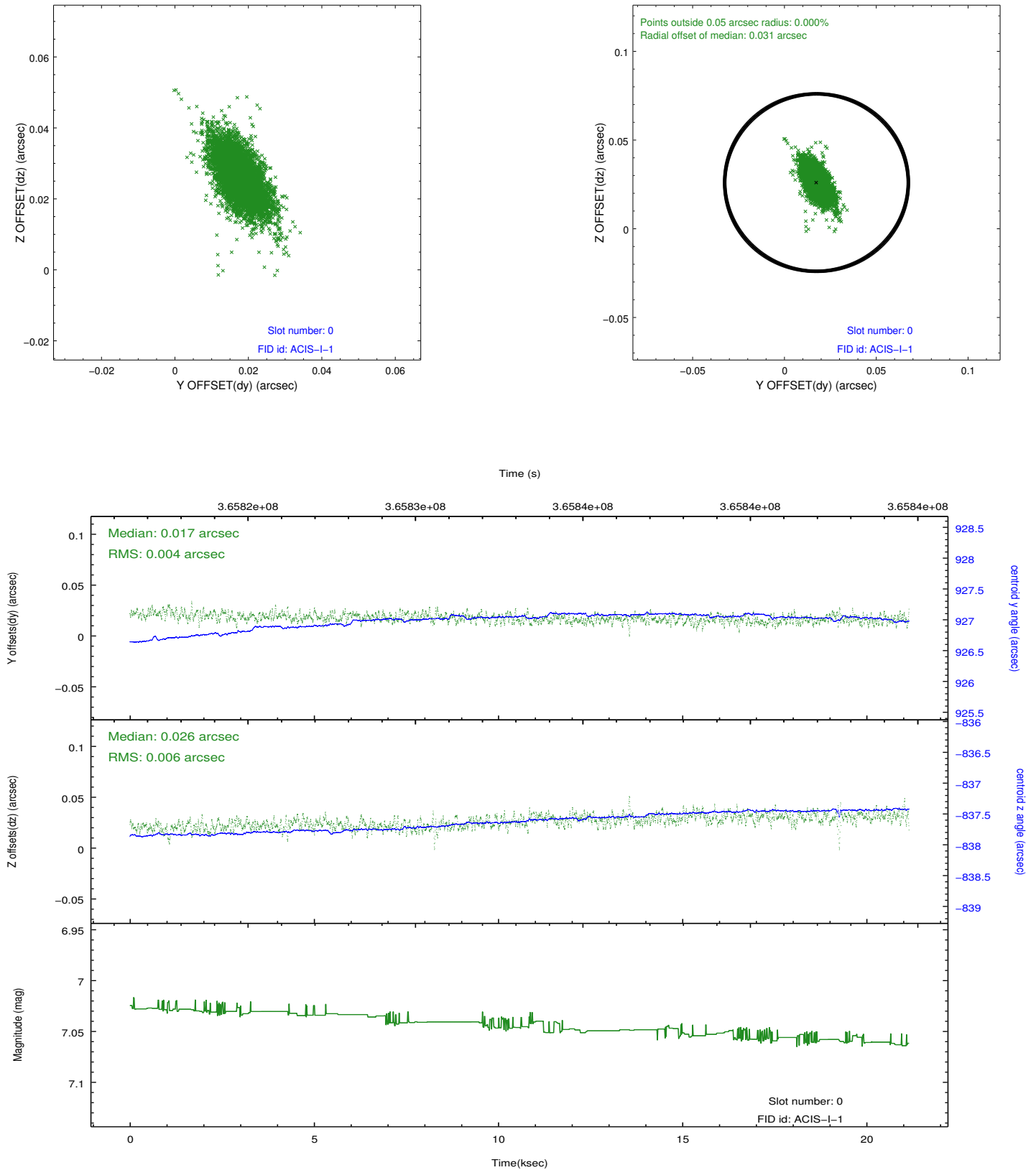


2.4.5 Slot 7

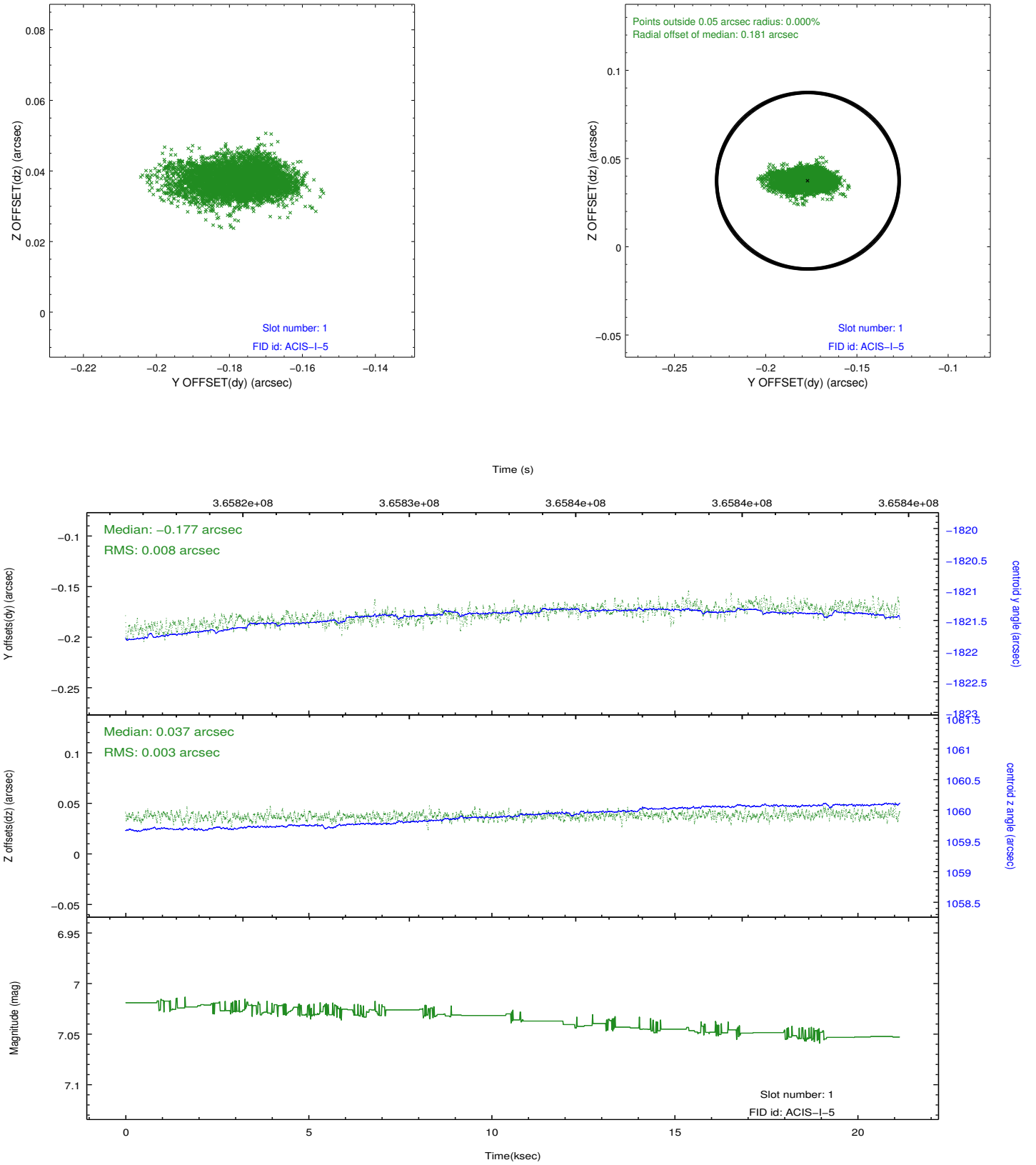


2.5 FID Slots

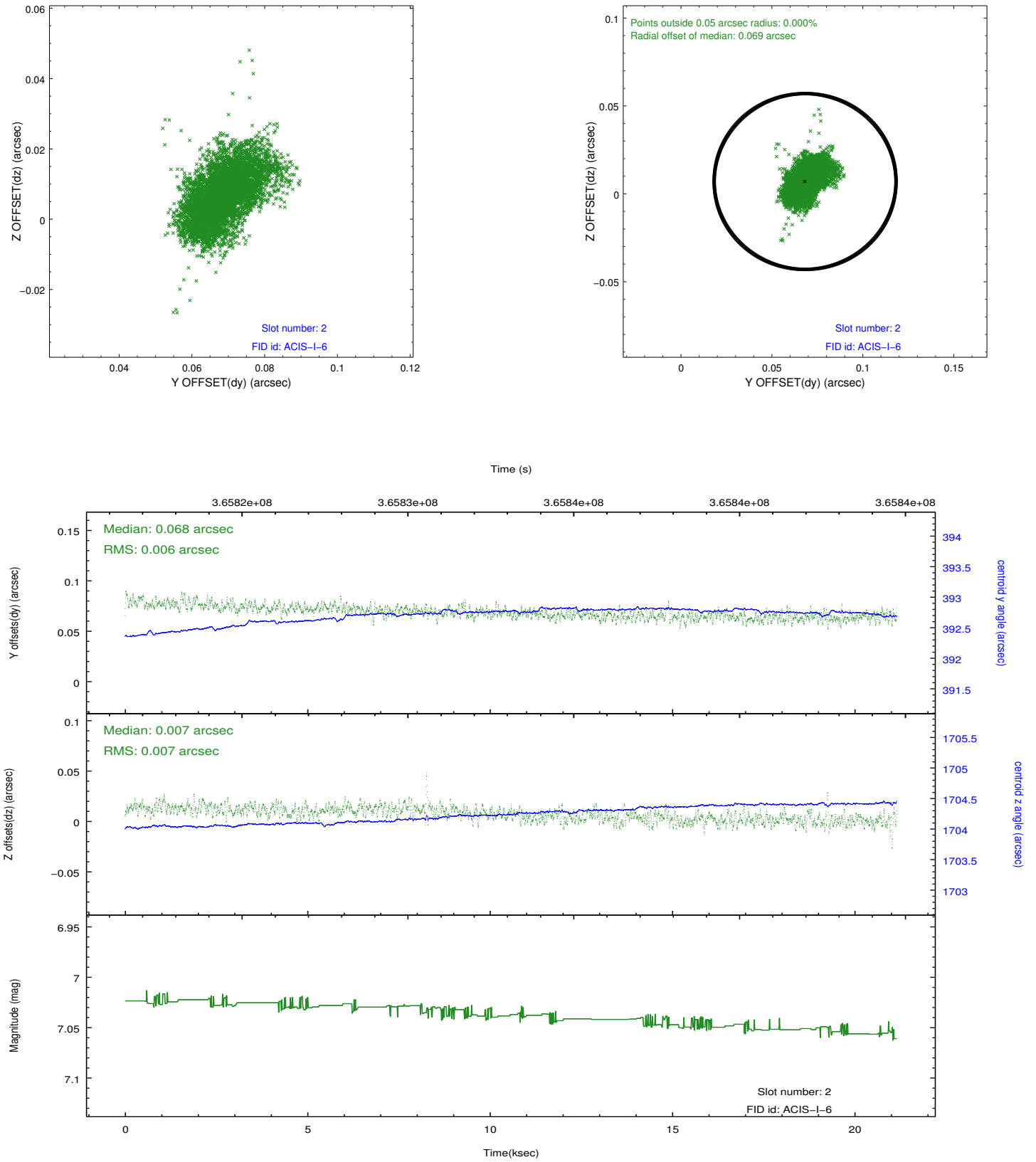
2.5.1 Slot 0



2.5.2 Slot 1



2.5.3 Slot 2



A Summary

A.1 Status

V&V Scientist	Beth Sundheim
V&V Date (YYYY-MM-DD)	2012.06.14
V&V Edition	1
V&V Disposition and Status	OK
V&V Charge Time	19.948071465492

A.2 Comments