

# V&V Reference Report

## L2 ASCDS Version : 8.4.4

Observation 9636 - L2 Version 5  
Chandra X-Ray Center

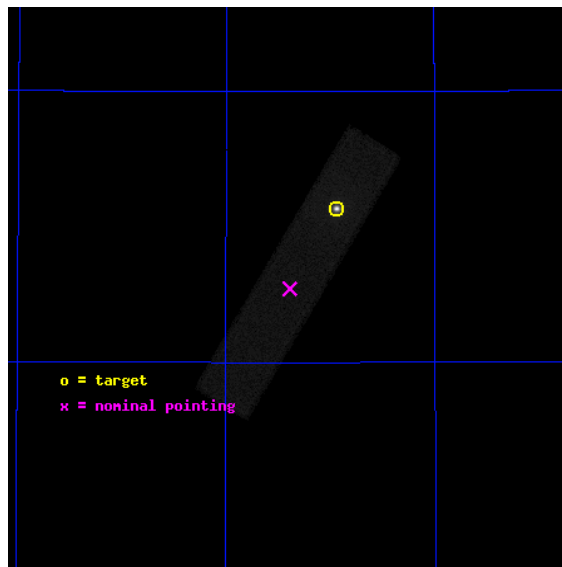
L2 Processing Date : Aug 12 2012

## Contents

<b>1</b>	<b>Front</b>	<b>2</b>
<b>2</b>	<b>OBI</b>	<b>3</b>
2.1	OBI . . . . .	3
2.1.1	Images . . . . .	3
2.1.2	Parameters . . . . .	4
2.1.3	Events . . . . .	4
2.2	Compared Parameters . . . . .	5
2.3	Aspect . . . . .	6
2.4	Star Slots . . . . .	9
2.4.1	Slot 3 . . . . .	9
2.4.2	Slot 4 . . . . .	10
2.4.3	Slot 5 . . . . .	11
2.4.4	Slot 6 . . . . .	12
2.4.5	Slot 7 . . . . .	13
2.5	FID Slots . . . . .	14
2.5.1	Slot 0 . . . . .	14
2.5.2	Slot 1 . . . . .	15
2.5.3	Slot 2 . . . . .	16
<b>A</b>	<b>Summary</b>	<b>17</b>
A.1	Status . . . . .	17
A.2	Comments . . . . .	17

# 1 Front

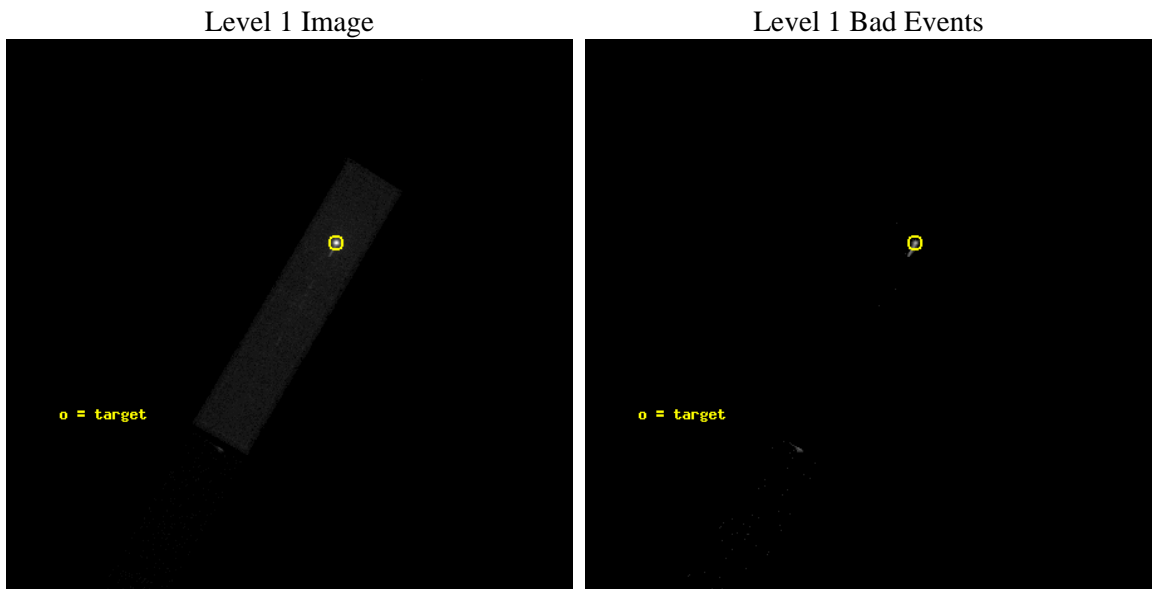
seq_num	290759	Sequence number
obs_id	9636	Observation id
title	AO9 Measurements of the optical/UV Transmission of the HRC Filters.	&#160
observer	Dr. CXC Calibration	Principal investigator
object	Vega	Source name
ra_targ	279.235	Observer's specified target RA [deg]
dec_targ	38.783778	Observer's specified target Dec [deg]
ra_nom	279.34710205767	Nominal RA [deg]
dec_nom	38.63637660935	Nominal Dec [deg]
roll_nom	300.66636312597	Nominal Roll [deg]
revision	5	Processing version of data
ontime	2186.5813578963	[s]
livetime	1699.5254055416	Ontime multiplied by DTCOR
l2events	380339	Number of level 2 events



## 2 OBI

### 2.1 OBI

#### 2.1.1 Images



### 2.1.2 Parameters

obi_num	0	Obi number	sched_exp_time	2000.000000	[s] Scheduled observation exposure time
ascdsver	8.4.5	Processing system revision	ontime	2186.5813578963	[s]
caldbver	4.5.1.1	&#160	l1events	456531	Number of level 1 events
date	2012-08-12T23:31:42	Date and time of file creation			
revision	5	Processing version of data			

### 2.1.3 Events

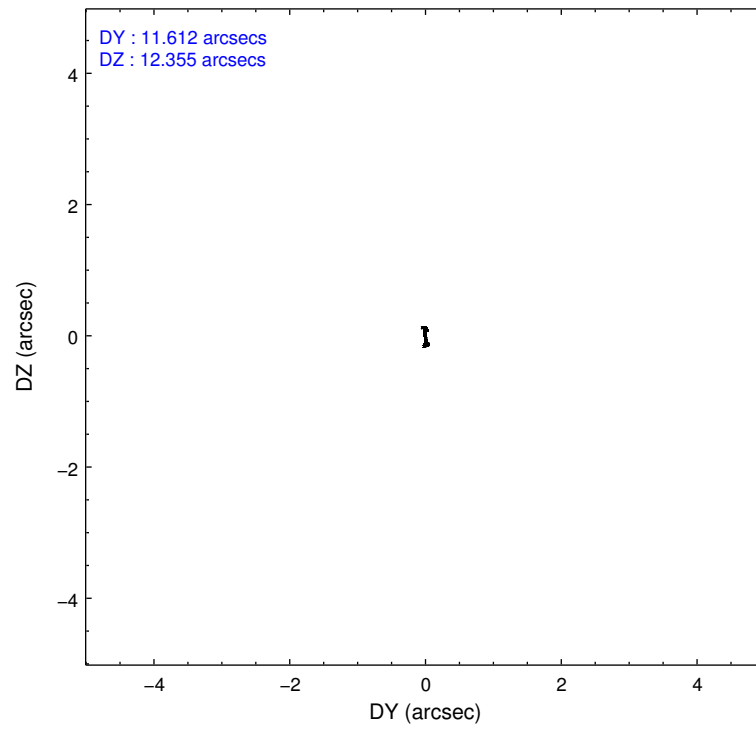
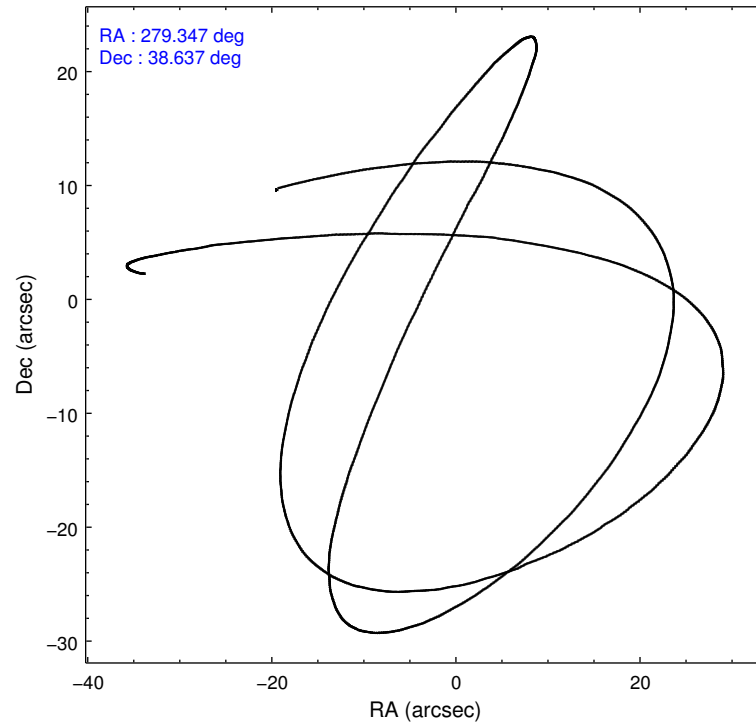
Level 1 Events

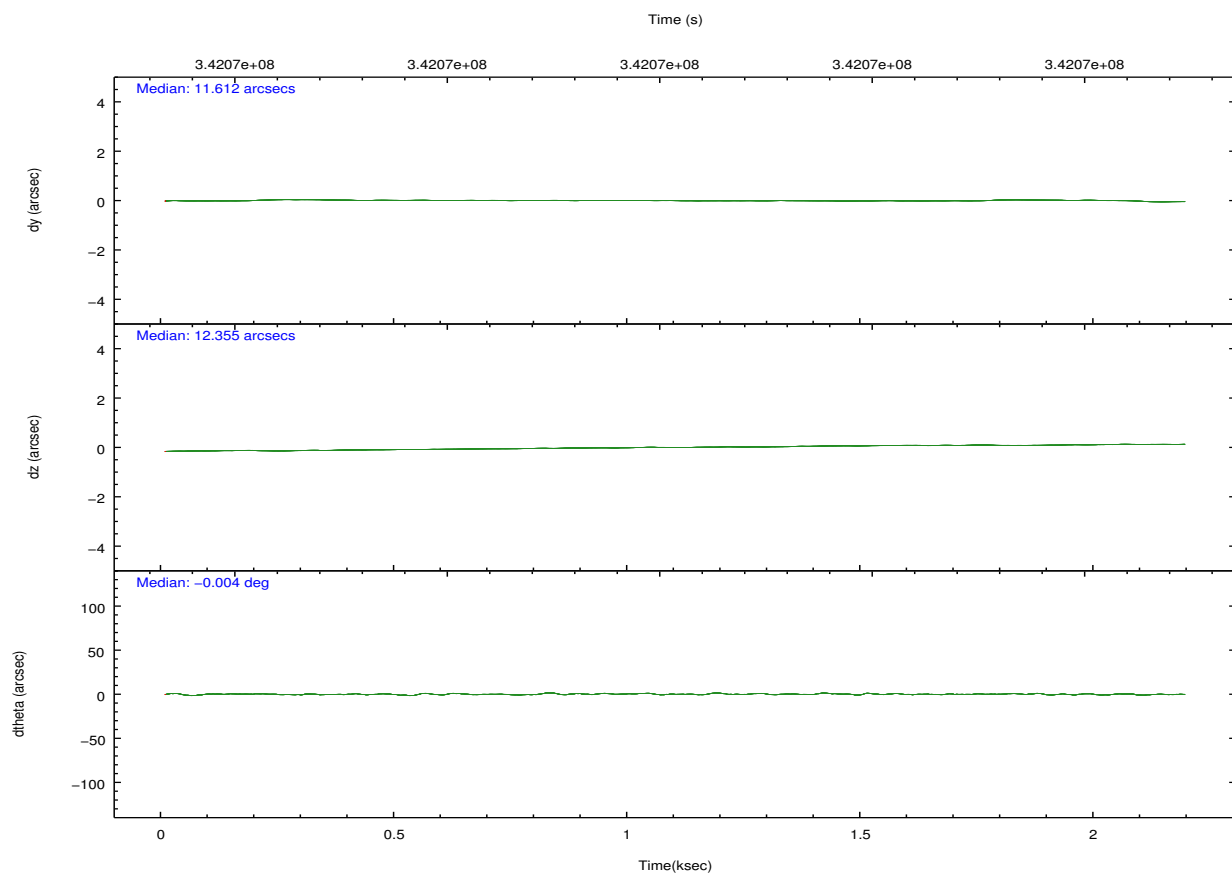
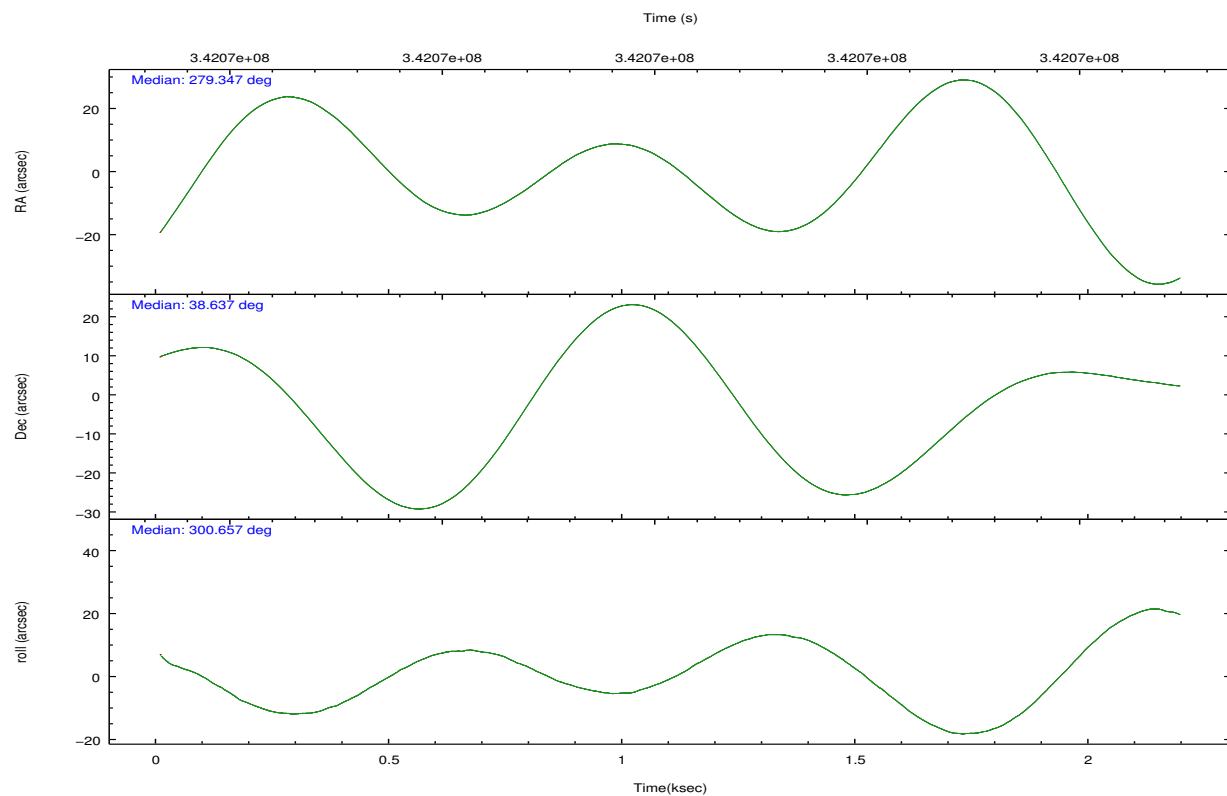
	<b>segment 1</b>	<b>segment 2</b>	<b>segment 3</b>
level 1 events	675	447256	8600
rejected events	675	44071	8600
rejected %	100%	9%	100%

## 2.2 Compared Parameters

Parameter	Planned	Actual	Parameter	Planned	Actual
Instrument	HRC	HRC	Obspar format version number	7	7
Detector	HRC-S	HRC-S	Obspar file type	PREDICTED	ACTUAL
Grating	NONE	NONE	Obspar update status	OVERRIDE	OVERRIDE
Data mode	OBSERVING	OBSERVING			
Observation mode	POINTING	POINTING			
[deg] Pointing RA	279.3471020576729	279.3471020576729			
[deg] Pointing Dec	38.63637660935001	38.63637660935001			
[deg] Pointing Roll	300.6663631259746	300.6663631259746			
[s] Window start time (MET)	336614465.184000	336614465.184000			
[s] Window stop time (MET)	344390465.184000	344390465.184000			
[mm] SIM focus pos	-1.526339935833849	-1.526339935833849			
[mm] SIM defocus	0.006996627321894433	0.006996627321894433			
[mm] SIM translation stage pos	250.466033080201	250.466033080201			
[mm] SIM translation stage offset	-0.0100572612062706	-0.0100572612062706			
[s] Observation start time (MET)	342070254.64653	342070254.64653			
Observation start date	2008-11-03T03:36:05	2008-11-03T03:30:54			
[s] Observation end time (MET)	342072795.109158	342072795.109158			
Observation end date	2008-11-03T04:09:25	2008-11-03T04:13:15			

## 2.3 Aspect



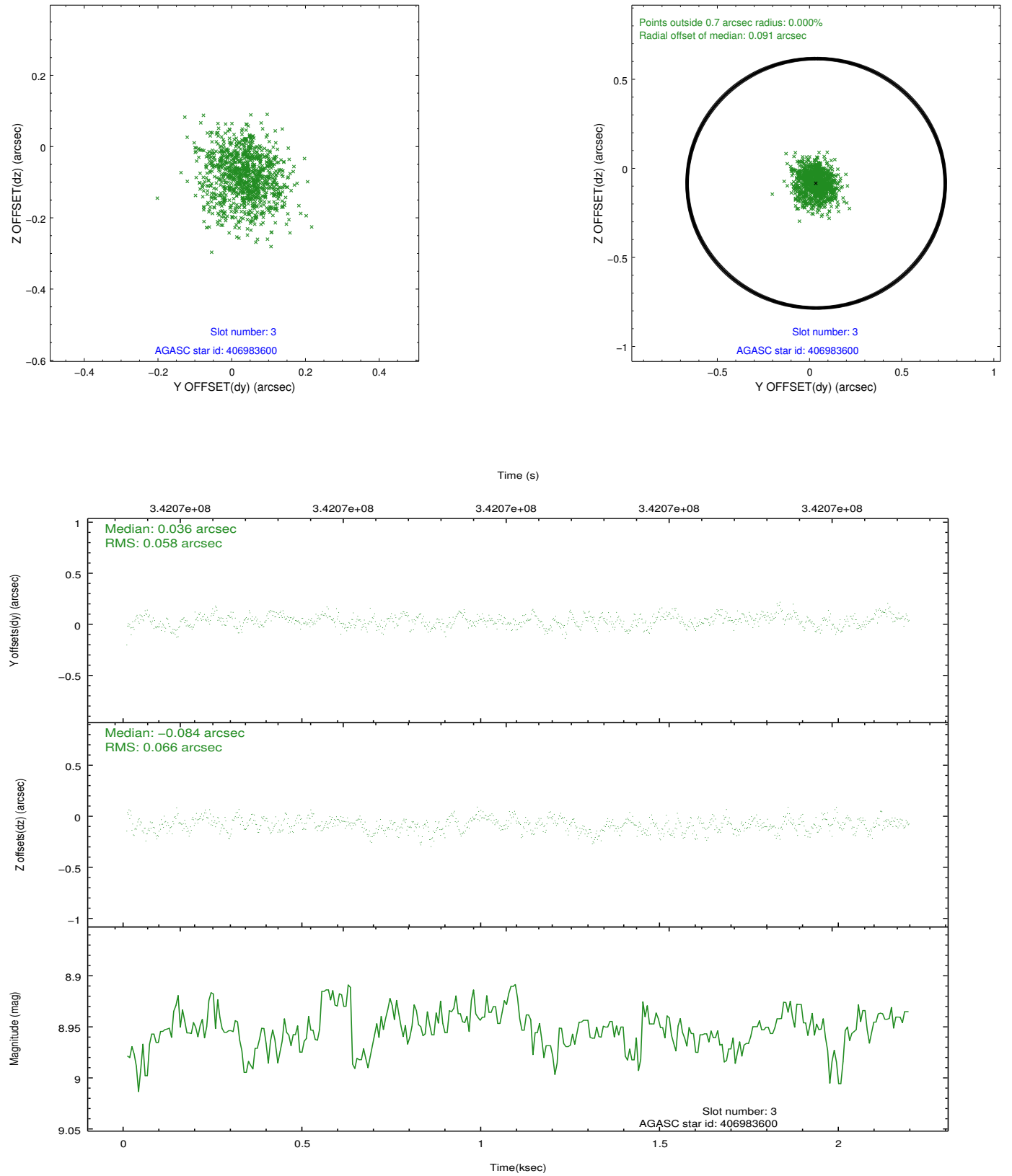


### Slot Statistics

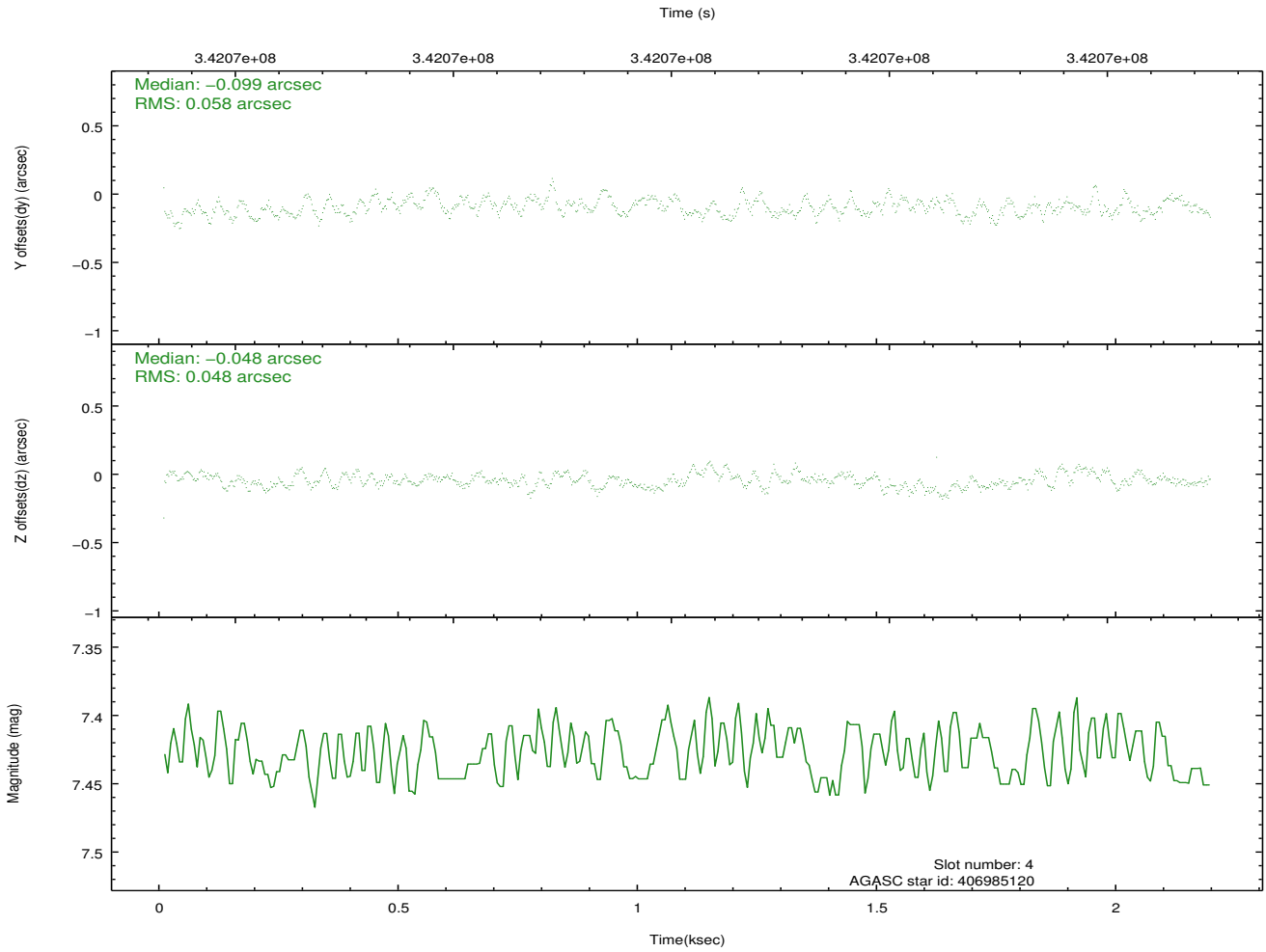
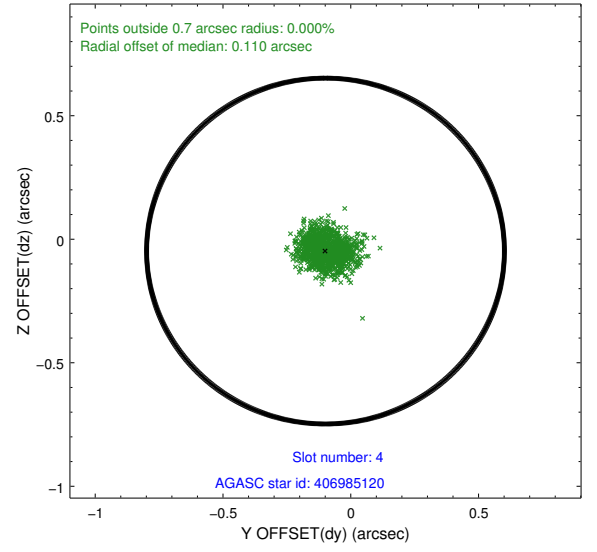
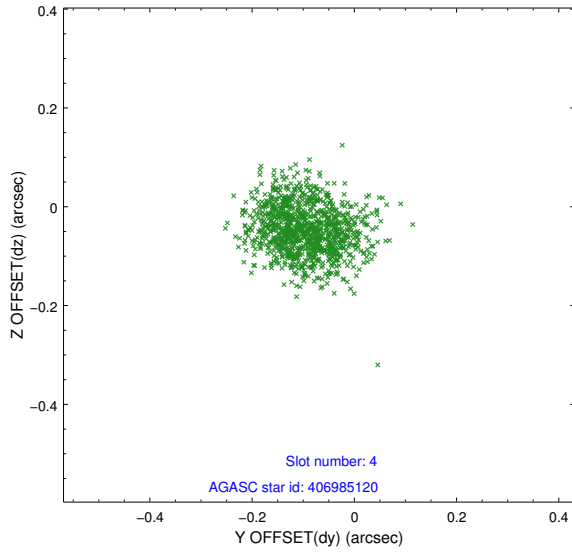
slot	status	id	mag	n_pts	med_dy	med_dz	dr1	dr2	ra	dec	mean_y	mean_z
0	FID	HRC-S-1	7.06	534	0.069	-0.130	0.007	0.011	0.000000	0.000000	-1165.92	-461.10
1	FID	HRC-S-2	7.04	534	0.244	-0.123	0.005	0.009	0.000000	0.000000	1231.73	-454.56
2	FID	HRC-S-3	7.05	534	0.077	-0.049	0.007	0.011	0.000000	0.000000	-1166.34	567.65
3	GUIDE	406983600	8.95	1067	0.036	-0.084	0.095	0.150	279.940957	39.020708	-262.29	2193.33
4	GUIDE	406985120	7.43	1068	-0.099	-0.048	0.080	0.127	278.839732	38.894839	-1441.08	-689.79
5	GUIDE	406987272	6.95	1068	-0.057	0.056	0.054	0.084	278.536588	38.437504	-470.32	-2270.74
6	GUIDE	406993992	7.64	1068	0.114	0.051	0.075	0.119	279.053714	38.034587	1527.55	-1763.34
7	GUIDE	407521232	8.65	1067	0.004	0.024	0.100	0.162	279.628883	39.431715	-1978.67	2187.04

## 2.4 Star Slots

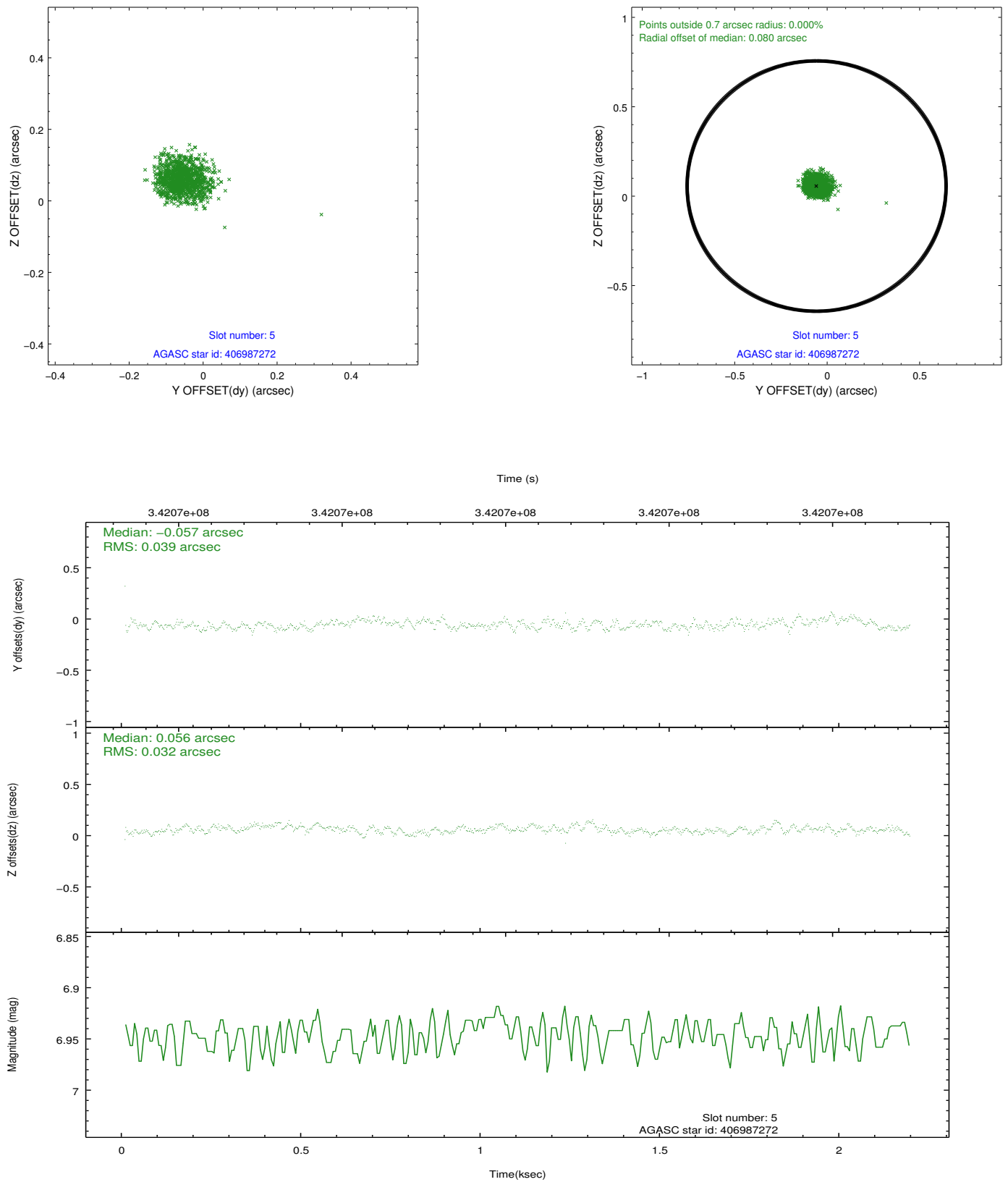
### 2.4.1 Slot 3



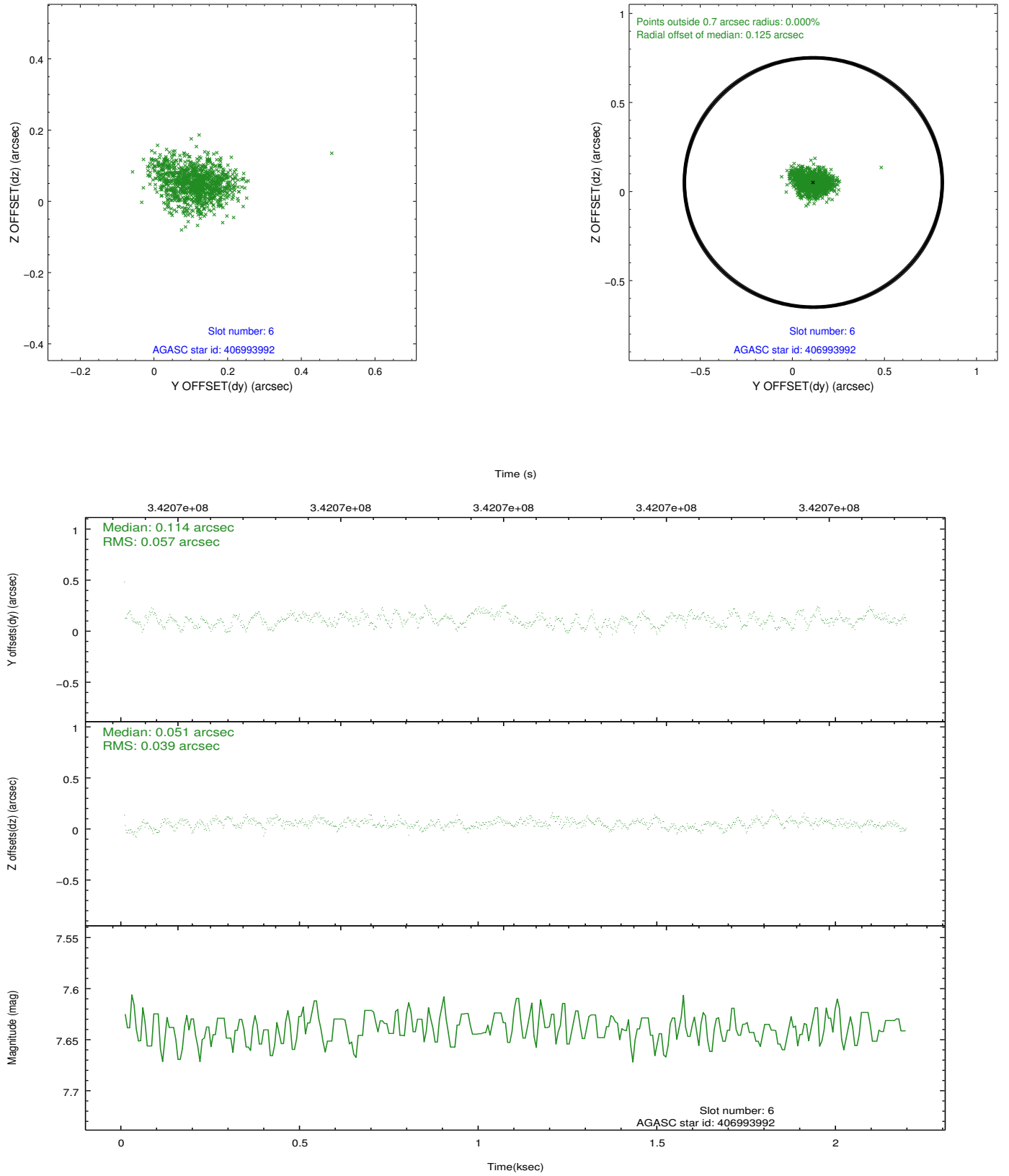
## 2.4.2 Slot 4



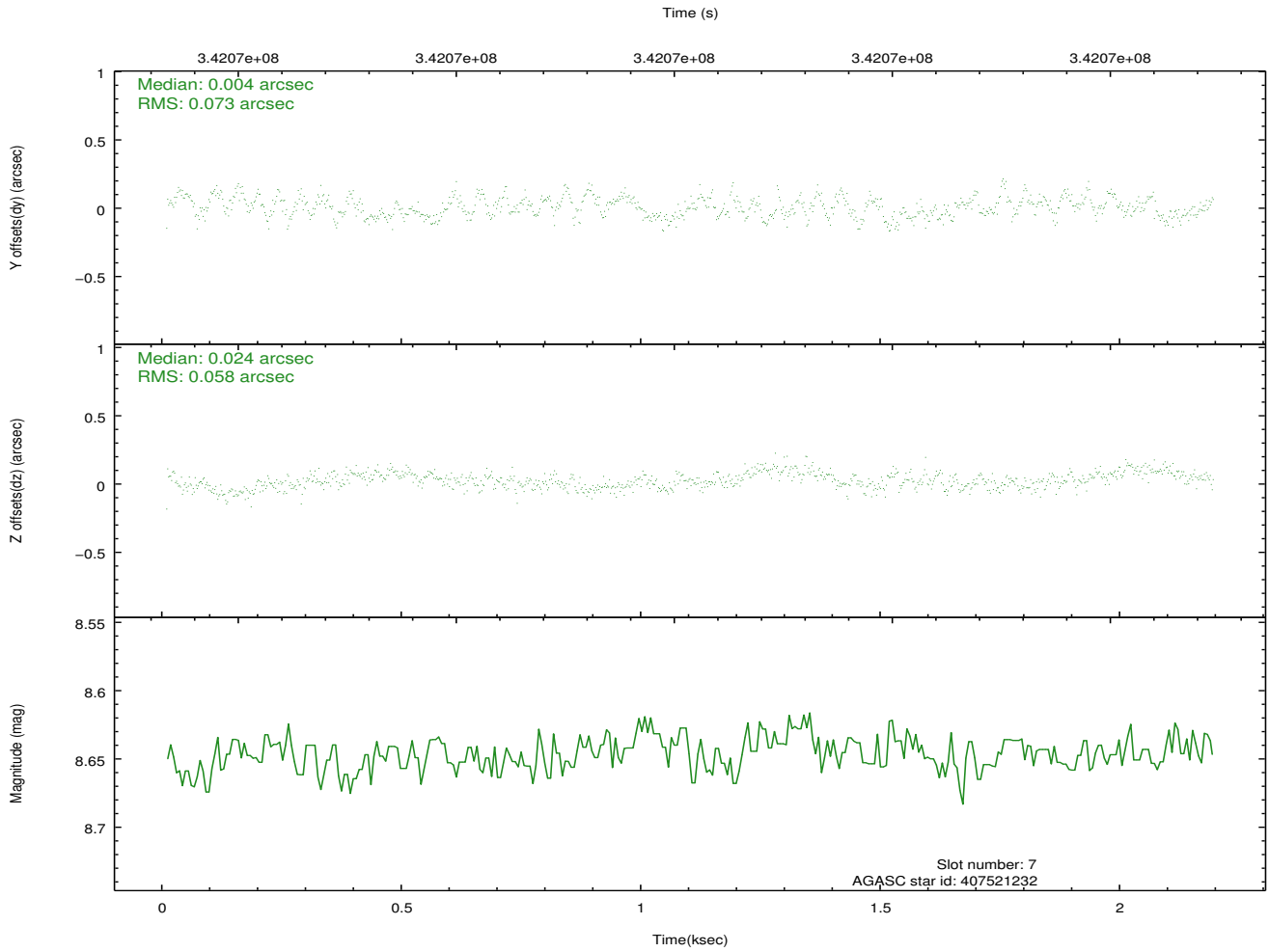
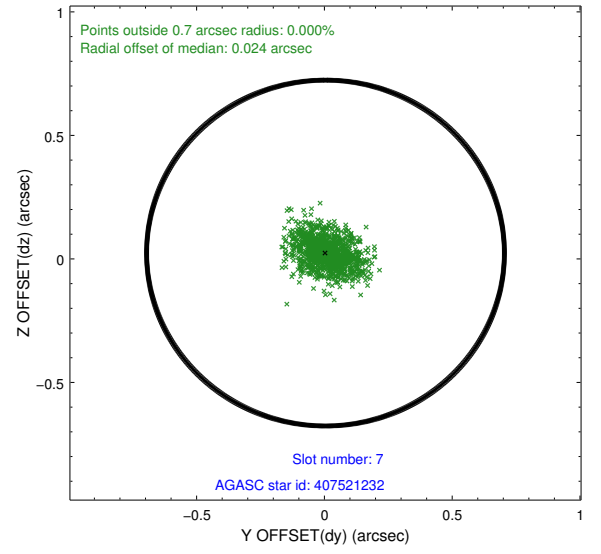
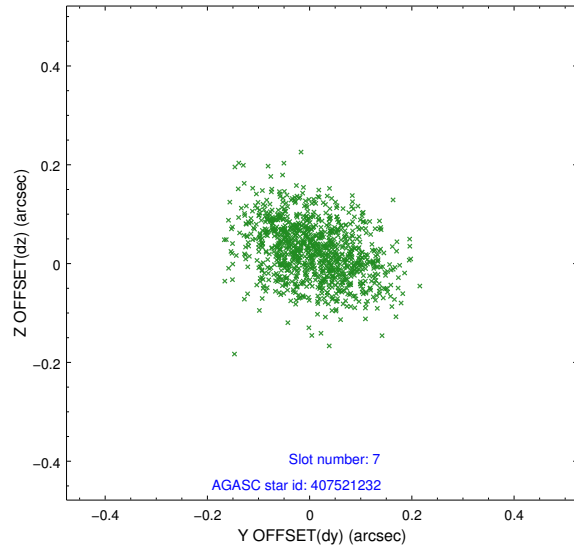
### 2.4.3 Slot 5



## 2.4.4 Slot 6

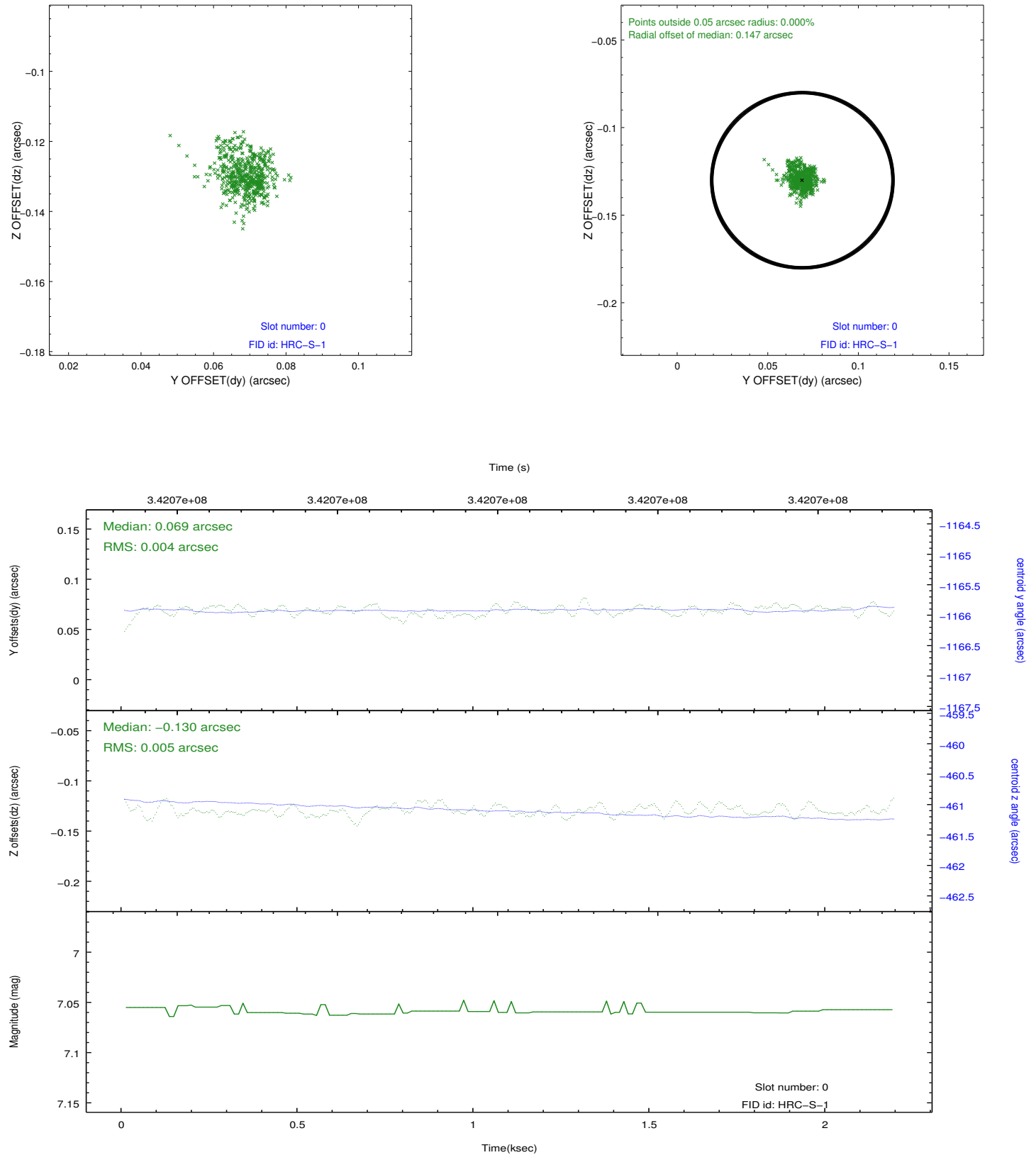


## 2.4.5 Slot 7

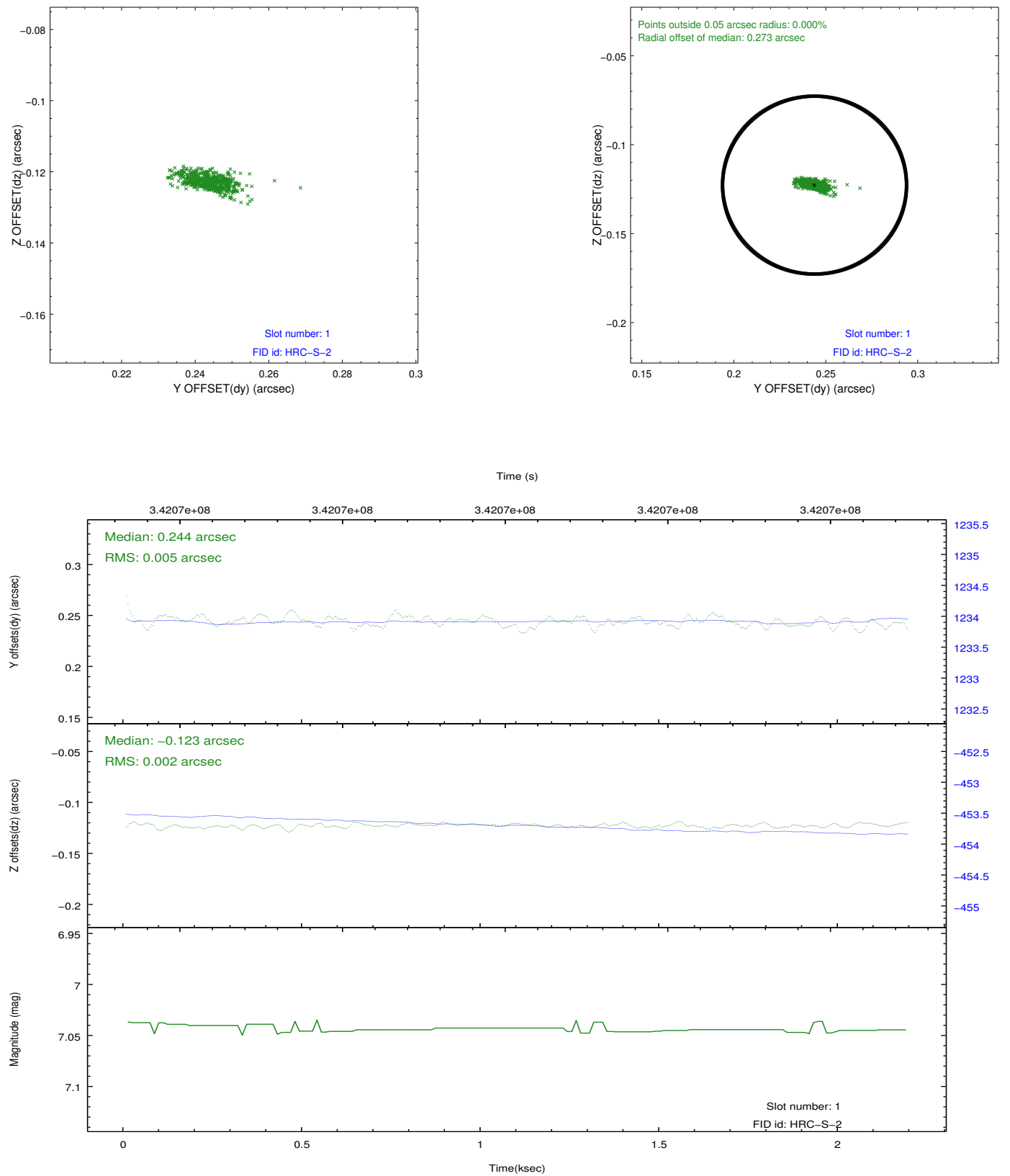


## 2.5 FID Slots

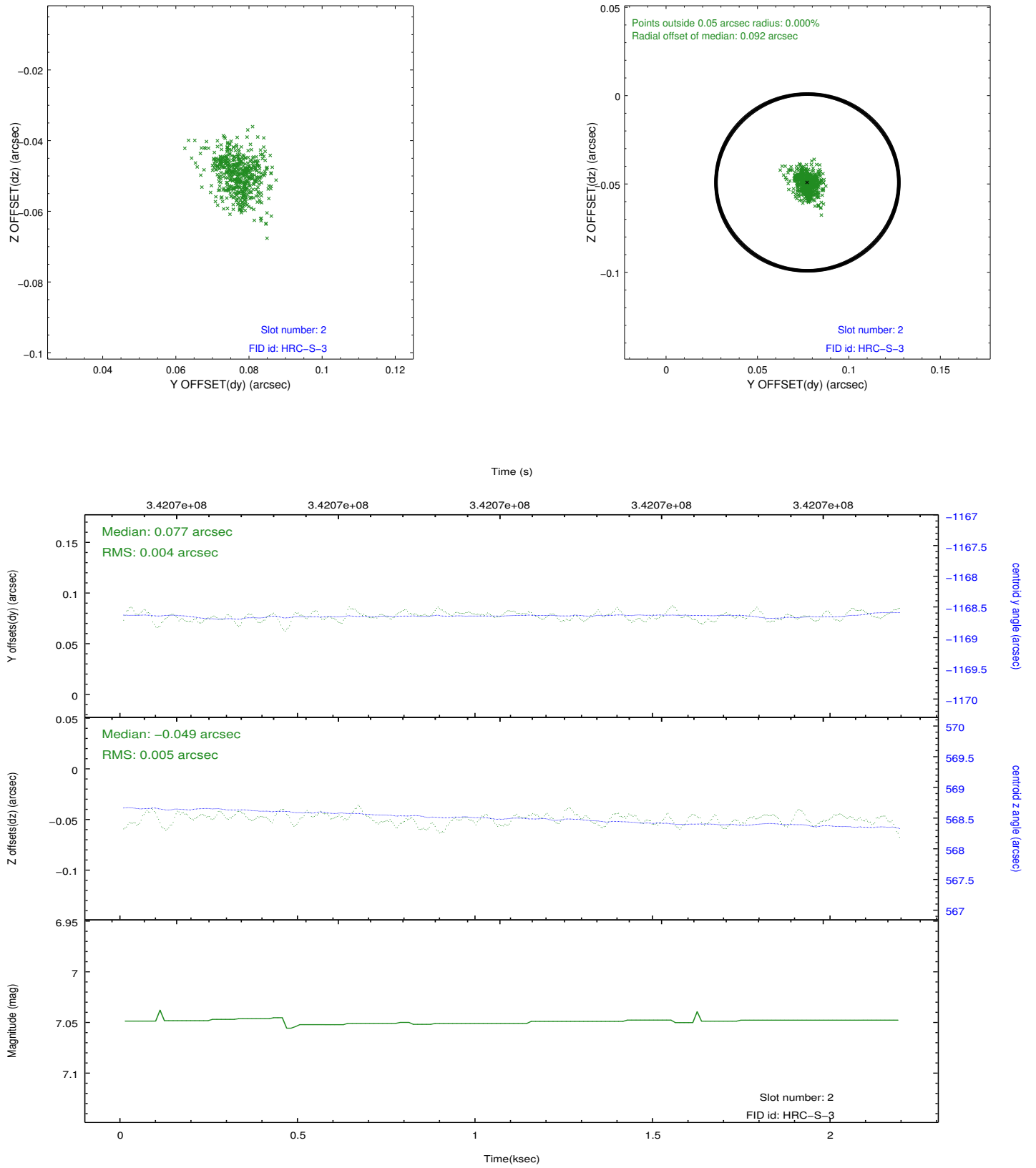
### 2.5.1 Slot 0



## 2.5.2 Slot 1



### 2.5.3 Slot 2



# A Summary

## A.1 Status

V&V Scientist	Jen Lauer
V&V Date (YYYY-MM-DD)	2012.08.20
V&V Edition	1
V&V Disposition and Status	OK
V&V Charge Time	2.18658135

## A.2 Comments

Window constraint met. Target is off-axis. In rare calibration observations, the observational data intentionally continues to the next obsid, but in the NEXT-IN-LINE mode, as opposed to the OBSERVING mode. To recover all the data, manual intervention is required by overriding observation parameters.