

V&V Reference Report

L2 ASCDS Version : 8.4.4

Observation 9496 - L2 Version 2
Chandra X-Ray Center

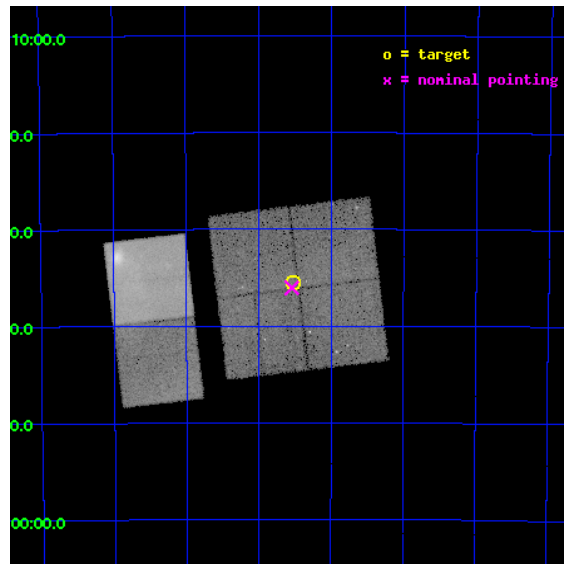
L2 Processing Date : May 15 2012

Contents

1	Front	2
2	OBI	3
2.1	OBI	3
2.1.1	Images	3
2.1.2	Bias	3
2.1.3	Parameters	4
2.1.4	Events	4
2.2	Compared Parameters	5
2.3	Aspect	6
2.4	Star Slots	9
2.4.1	Slot 3	9
2.4.2	Slot 4	10
2.4.3	Slot 5	11
2.4.4	Slot 6	12
2.4.5	Slot 7	13
2.5	FID Slots	14
2.5.1	Slot 0	14
2.5.2	Slot 1	15
2.5.3	Slot 2	16
A	Summary	17
A.1	Status	17
A.2	Comments	17

1 Front

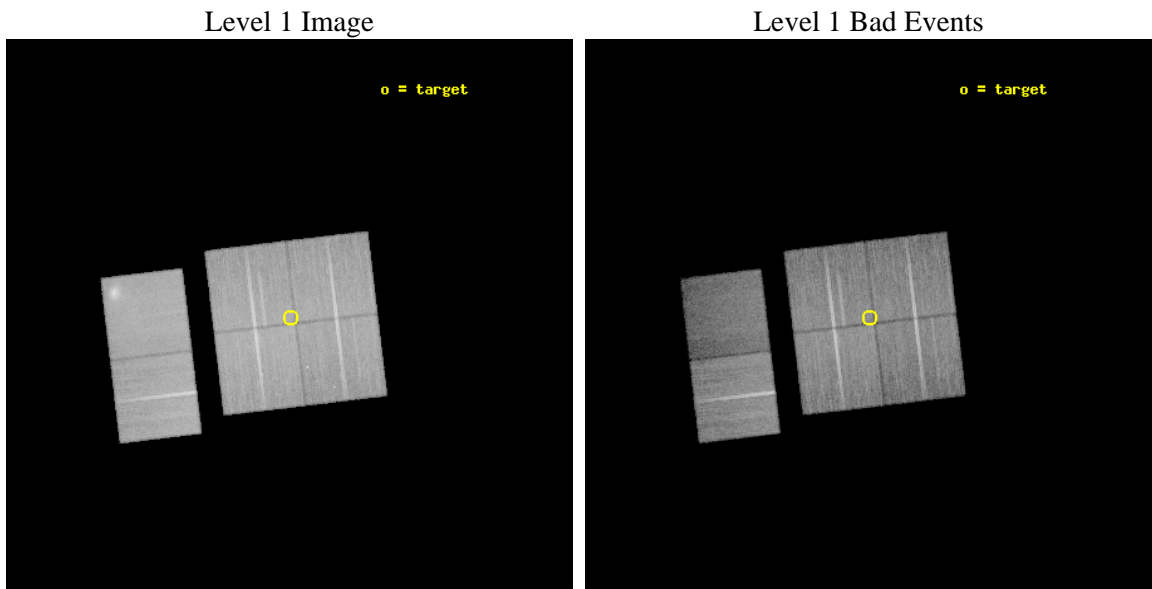
seq_num	900833	Sequence number
obs_id	9496	Observation id
title	The Great Nebula in Carina: Protoplanetary Disks to Starburst Galaxies	Proposal title
observer	Dr. Leisa Townsley	Principal investigator
object	Carina Superbubble Ptg 1	Source name
dtcycle	0	
cycle	P	events from which exps? Prim/Second/Both
ra_targ	160.3825	Observer's specified target RA [deg]
dec_targ	-59.593	Observer's specified target Dec [deg]
ra_nom	160.38538917672	Nominal RA [deg]
dec_nom	-59.600958017964	Nominal Dec [deg]
roll_nom	263.21117990053	Nominal Roll [deg]
revision	2	Processing version of data
ontime	27064.612319469	Sum of GTIs [s]
livetime	26721.903901927	Livetime [s]
ontime0	27061.248199284	Sum of GTIs [s]
ontime1	27054.807228625	Sum of GTIs [s]
ontime2	27064.571279466	Sum of GTIs [s]
ontime3	27064.612319469	Sum of GTIs [s]
ontime6	27064.694399476	Sum of GTIs [s]
ontime7	27064.653359473	Sum of GTIs [s]
l2events	242310	Number of level 2 events



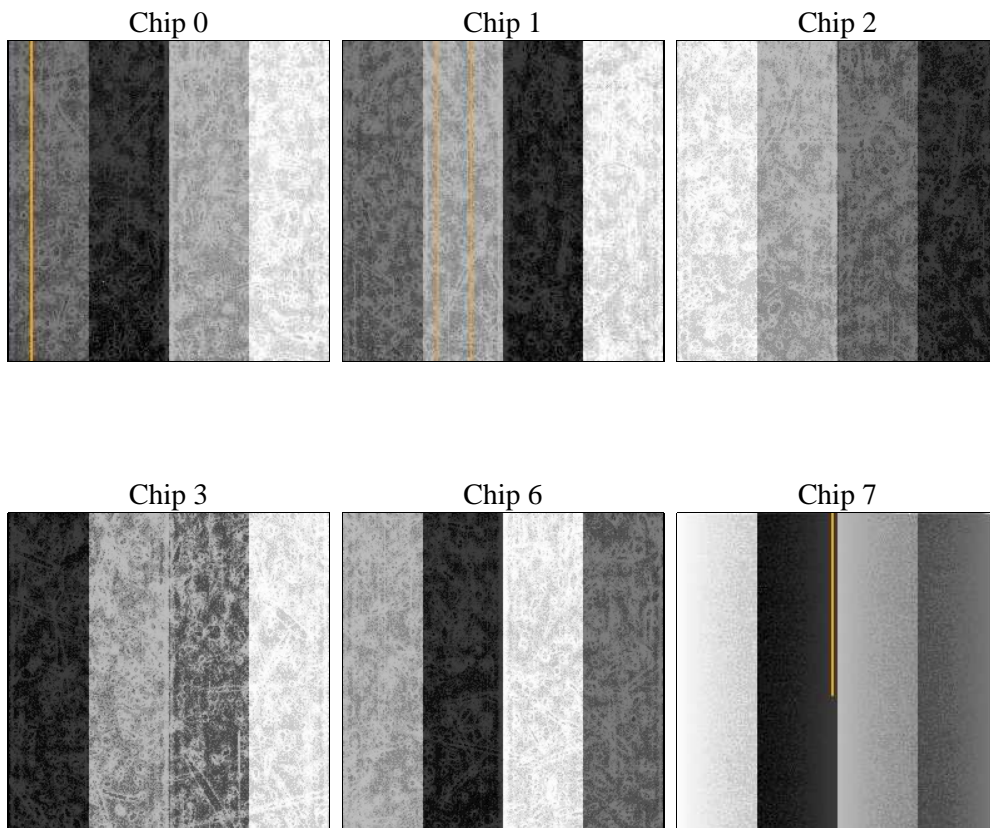
2 OBI

2.1 OBI

2.1.1 Images



2.1.2 Bias



2.1.3 Parameters

obi_num	0	Obi number	sched_exp_time	27000.000000	[s] Scheduled observation exposure time
ascdsver	8.4.4	Processing system revision	ontime	27064.612319469	Sum of GTIs [s]
caldsver	4.4.9	 	ontime0	27061.248199284	Sum of GTIs [s]
date	2012-05-15T16:06:40	Date and time of file creation	ontime1	27054.807228625	Sum of GTIs [s]
revision	2	Processing version of data	ontime2	27064.571279466	Sum of GTIs [s]
			ontime3	27064.612319469	Sum of GTIs [s]
			ontime6	27064.694399476	Sum of GTIs [s]
			ontime7	27064.653359473	Sum of GTIs [s]
			l1events	1256989	Number of level 1 events

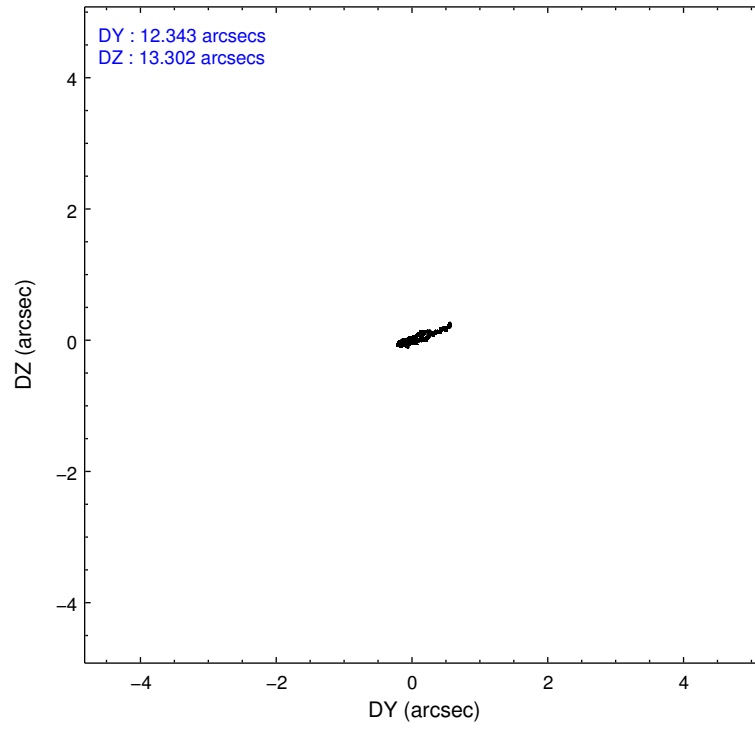
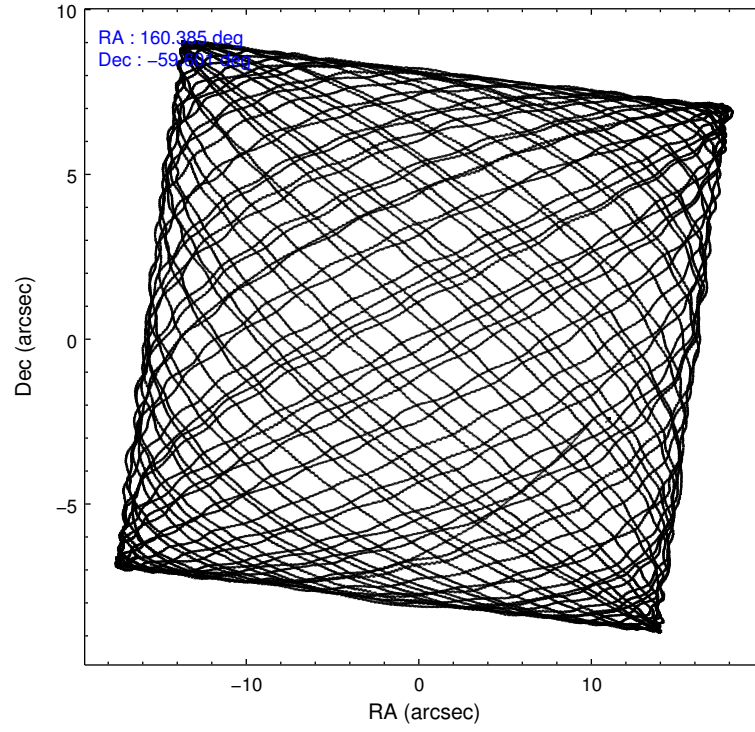
2.1.4 Events

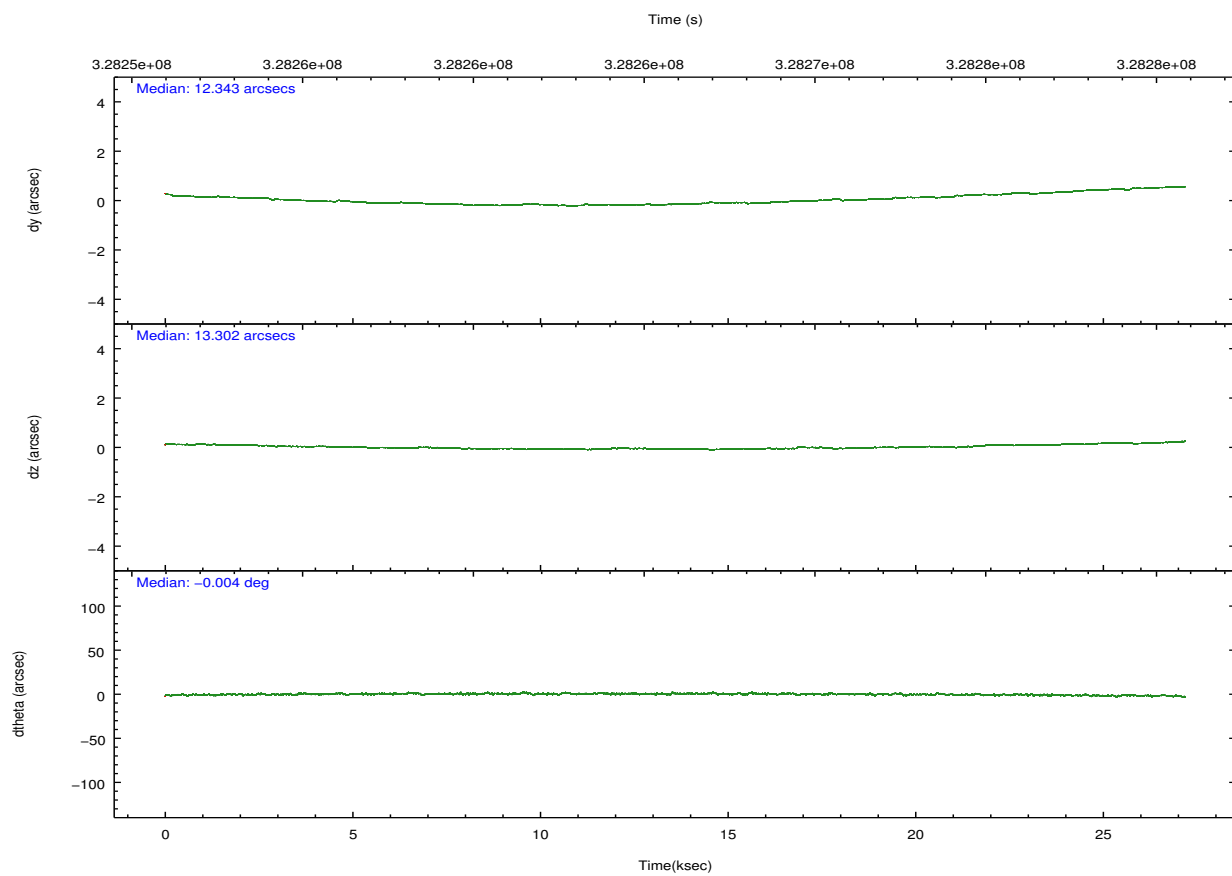
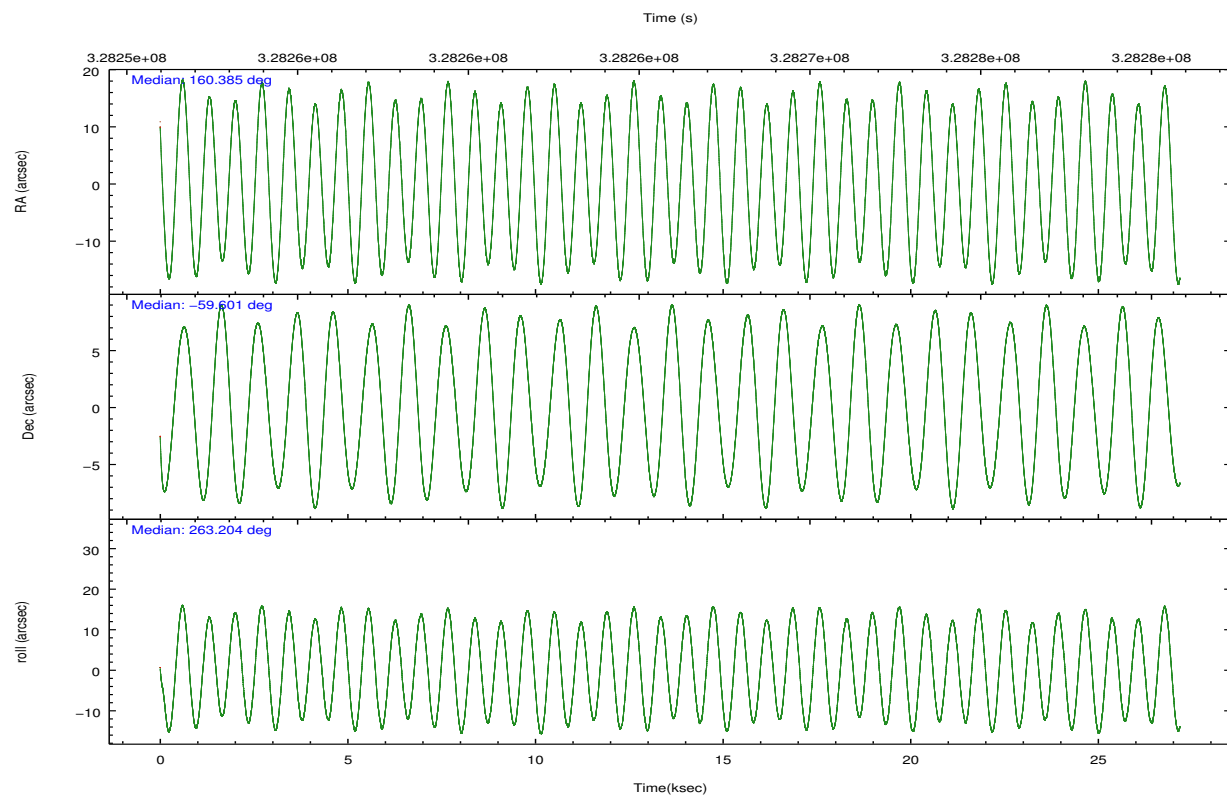
	ccd 0	ccd 1	ccd 2	ccd 3	ccd 6	ccd 7		ccd 0	ccd 1	ccd 2	ccd 3	ccd 6	ccd 7
level 1 events	190691	191923	223331	200348	220993	229703	grade 0 events	13967	11628	13284	9550	19303	20184
rejected events	163033	166104	196924	178711	186747	99695		7%	6%	5%	4%	8%	8%
rejected %	85%	86%	88%	89%	84%	43%	grade 1 events	130	126	178	151	176	303
								0%	0%	0%	0%	0%	0%
							grade 2 events	5418	5081	5230	4415	5764	29644
								2%	2%	2%	2%	2%	12%
							grade 3 events	2284	2416	2121	2105	2418	12993
								1%	1%	0%	1%	1%	5%
							grade 4 events	2224	2407	2308	2088	2360	13169
								1%	1%	1%	1%	1%	5%
							grade 5 events	5891	6471	5693	6984	7256	21278
								3%	3%	2%	3%	3%	9%
							grade 6 events	3765	4291	3465	3480	4404	54034
								1%	2%	1%	1%	1%	23%
							grade 7 events	157012	159503	191052	171575	179312	78098
								82%	83%	85%	85%	81%	33%

2.2 Compared Parameters

Parameter	Planned	Actual	Parameter	Planned	Actual
Instrument	ACIS	ACIS	Obspar format version number	7	7
Detector	ACIS-012367	ACIS-012367	Obspar file type	PREDICTED	ACTUAL
Grating	NONE	NONE	Obspar update status	NONE	UPDATED
Data mode	VFAINT	VFAINT	CCD I0 on	Y	Y
Observation mode	POINTING	POINTING	CCD I1 on	Y	Y
[deg] Pointing RA	160.363812	160.3853891767217	CCD I2 on	Y	Y
[deg] Pointing Dec	-59.575724	-59.60095801796424	CCD I3 on	Y	Y
[deg] Pointing Roll	262.983886	263.211179900531	CCD S0 on	N	N
[mm] SIM focus pos	-0.782348	-0.7809083437167272	CCD S1 on	N	N
[mm] SIM defocus	0	0.001439871863259334	CCD S2 on	O1	Y
[mm] SIM translation stage pos	-233.592463	-233.5874344608287	CCD S3 on	O2	Y
[mm] SIM translation stage offset	0	-0.005018542100998502	CCD S4 on	N	N
[s] Observation start time (MET)	328252494.184000	328251478.89617	CCD S5 on	N	N
Observation start date	2008-05-27T05:13:49	2008-05-27T04:57:58	Number of optional ACIS chips dropped	0	0
[s] Observation end time (MET)	328279494.184000	328280220.92257	On-chip summing requested	N	N
Observation end date	2008-05-27T12:43:49	2008-05-27T12:57:00	Subarray requested	NONE	NONE
Read mode	TIMED	TIMED	Alternating exposures requested	N	N
			[s] Primary exposure time	0.000000	3.2

2.3 Aspect



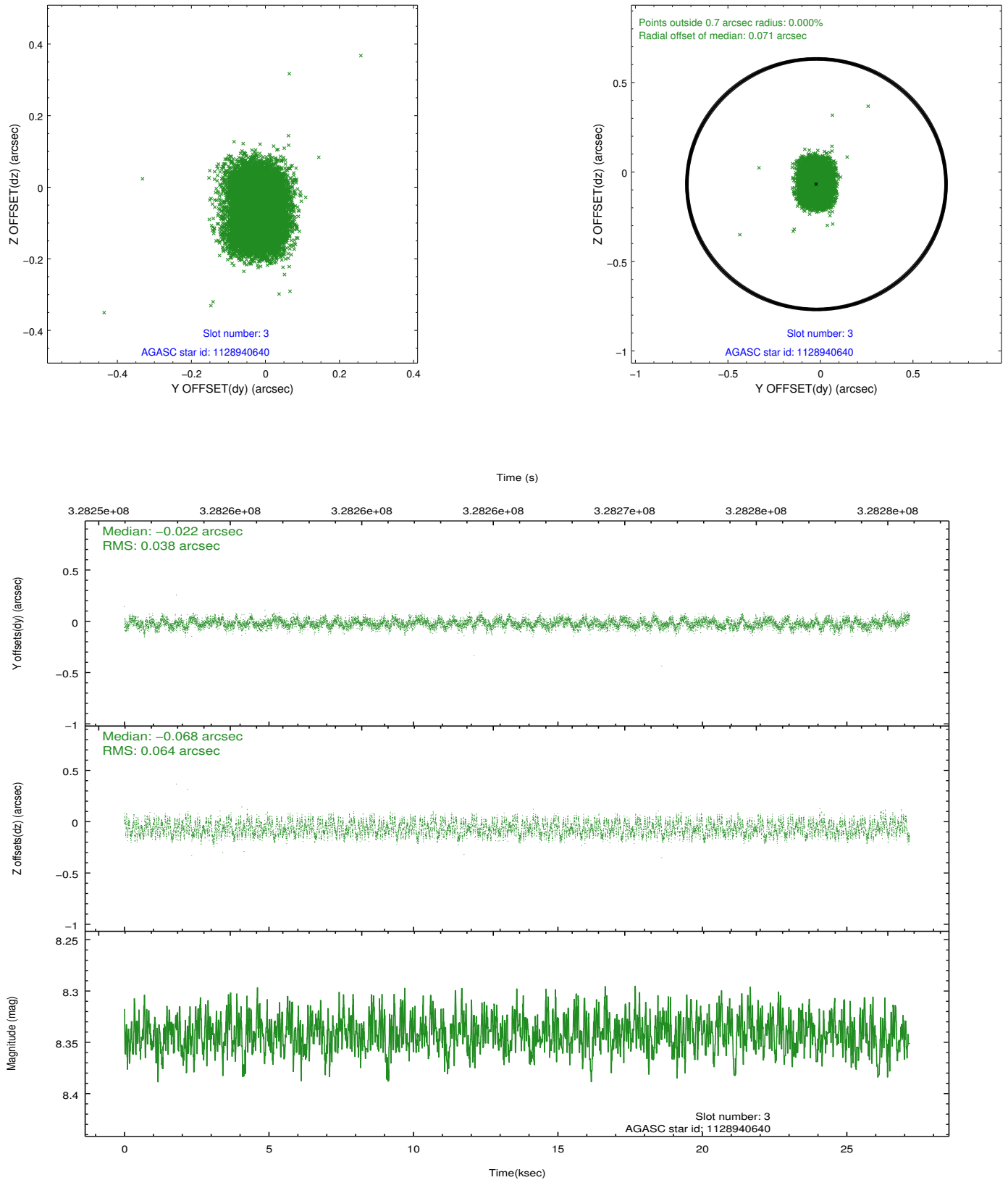


Slot Statistics

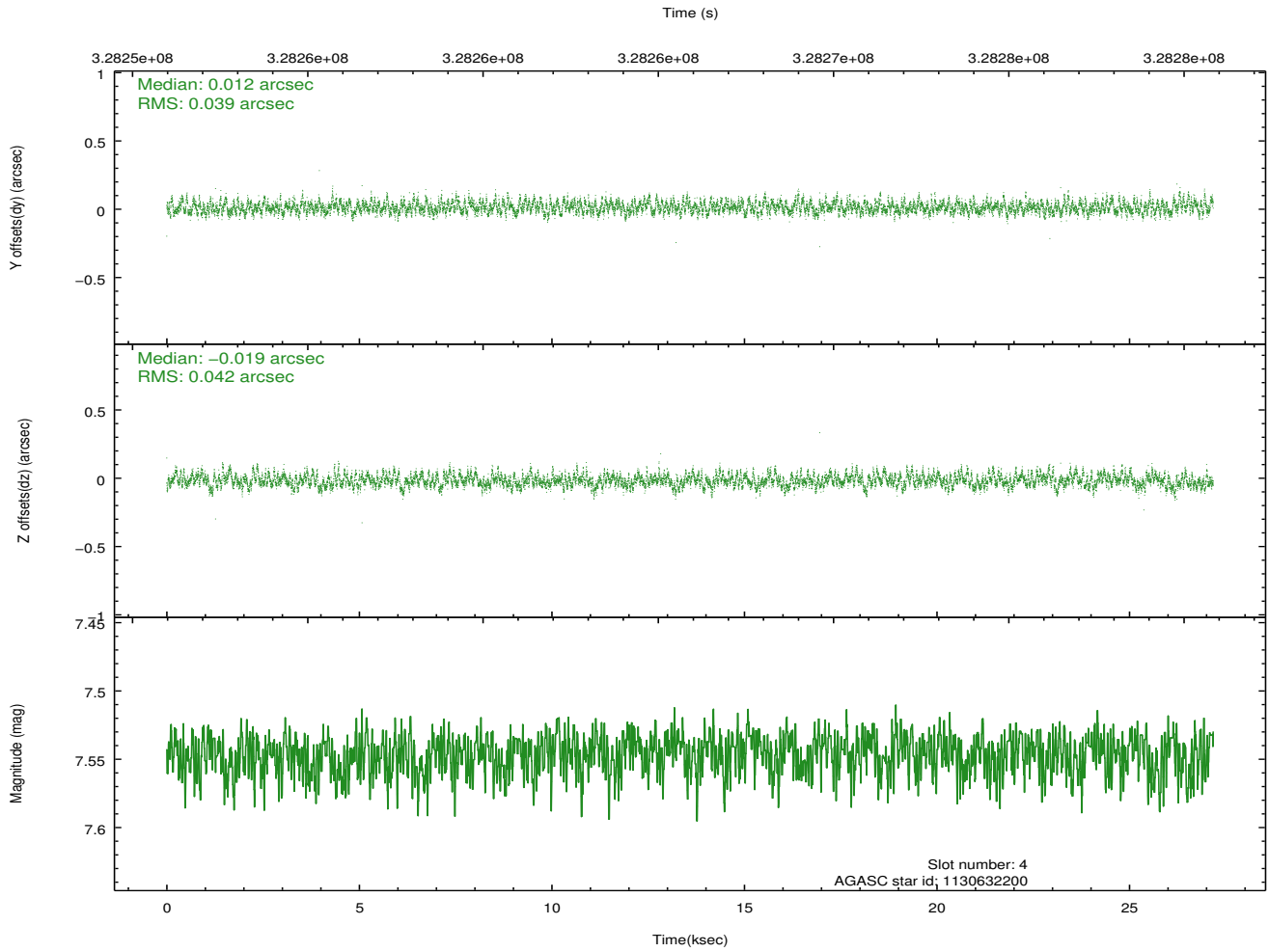
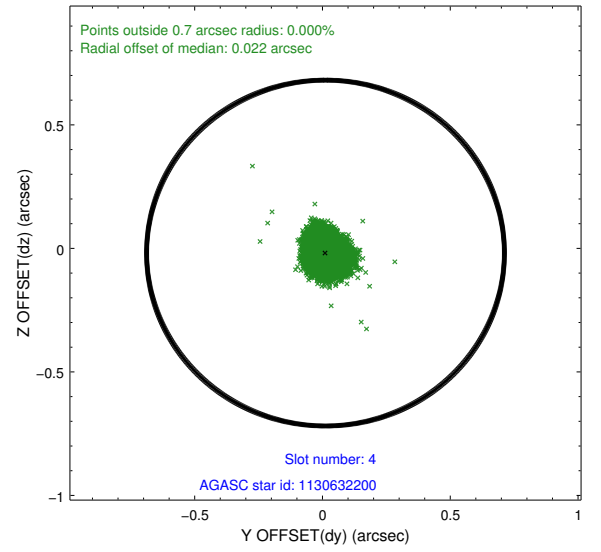
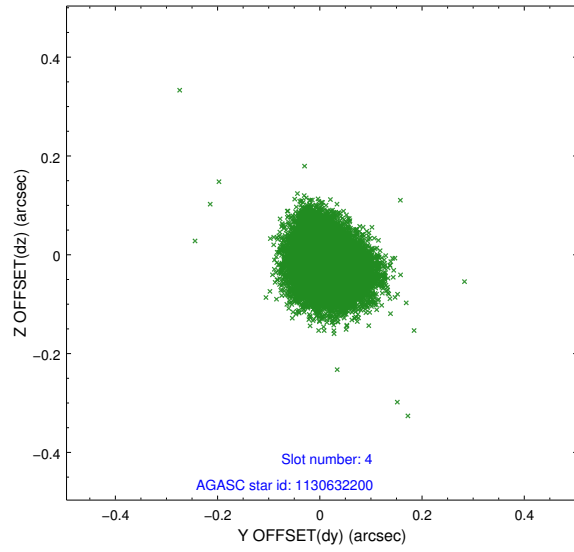
slot	status	id	mag	n_pts	med_dy	med_dz	dr1	dr2	ra	dec	mean_y	mean_z
0	FID	ACIS-I-1	7.00	6629	0.035	0.006	0.009	0.016	0.000000	0.000000	927.20	-836.85
1	FID	ACIS-I-2	6.92	6625	-0.035	-0.039	0.012	0.026	0.000000	0.000000	-766.90	-843.43
2	FID	ACIS-I-5	6.98	6629	-0.093	0.106	0.012	0.024	0.000000	0.000000	-1821.29	1060.61
3	GUIDE	1128940640	8.34	13254	-0.022	-0.068	0.081	0.123	159.517239	-59.074495	-1589.30	-1773.87
4	GUIDE	1130632200	7.55	13251	0.012	-0.019	0.061	0.096	161.433843	-59.407820	-823.82	1873.66
5	GUIDE	1174013928	7.05	13258	-0.105	-0.017	0.115	0.162	158.968200	-60.039977	1991.90	-2282.31
6	GUIDE	1174020184	8.15	13252	0.063	0.074	0.061	0.100	159.502388	-60.147833	2243.40	-1279.09
7	GUIDE	1174033144	8.69	13248	0.050	0.019	0.133	0.188	161.168741	-60.059230	1559.94	1649.39

2.4 Star Slots

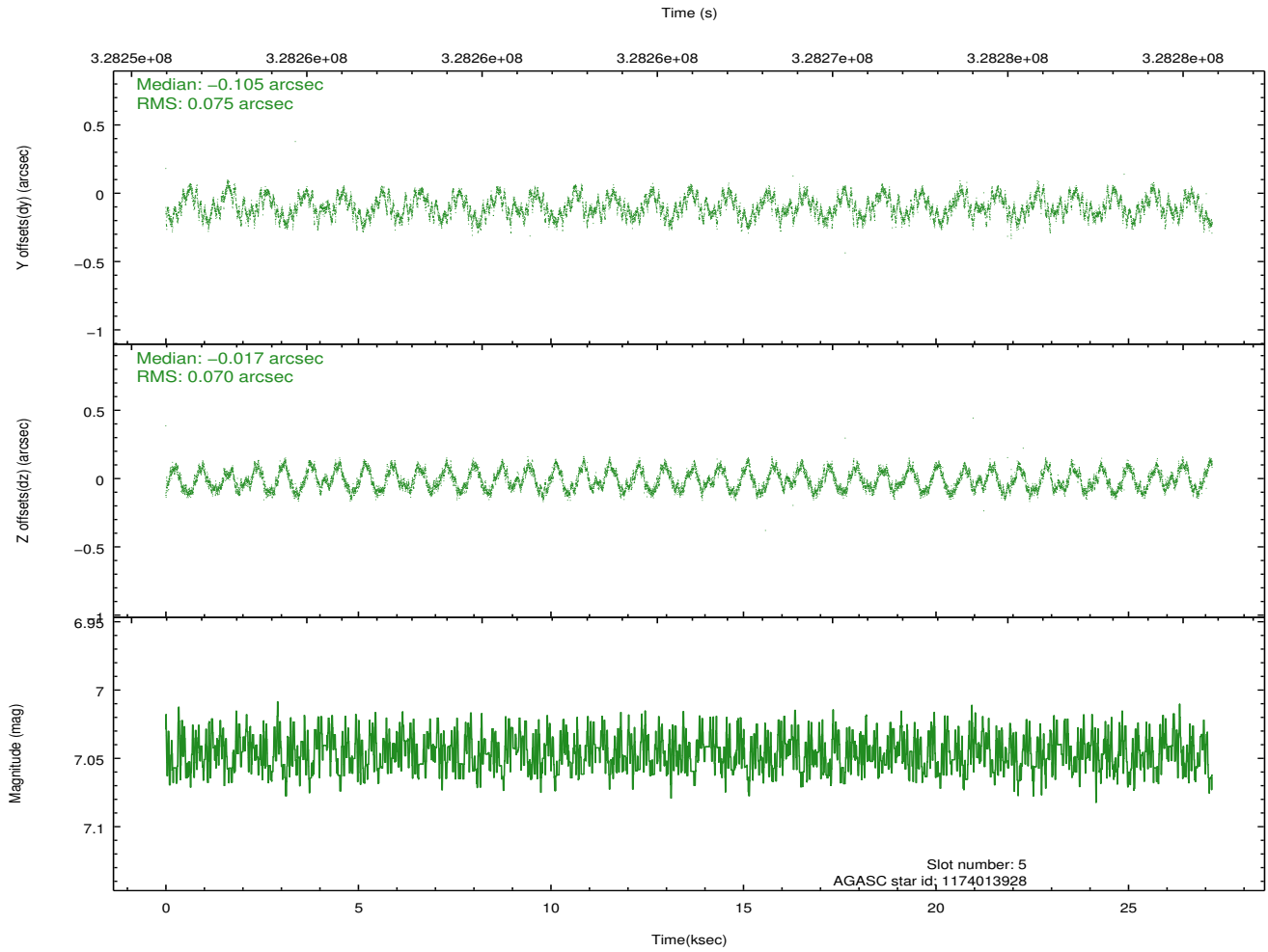
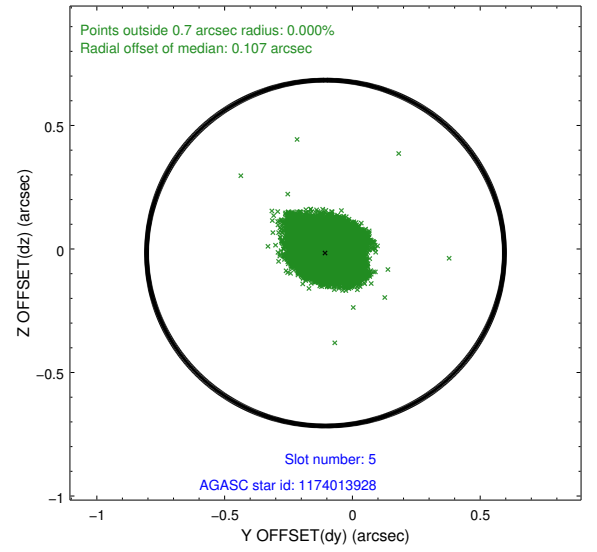
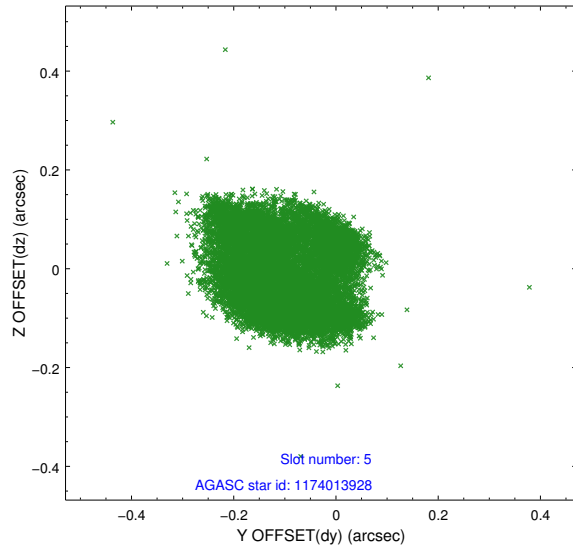
2.4.1 Slot 3



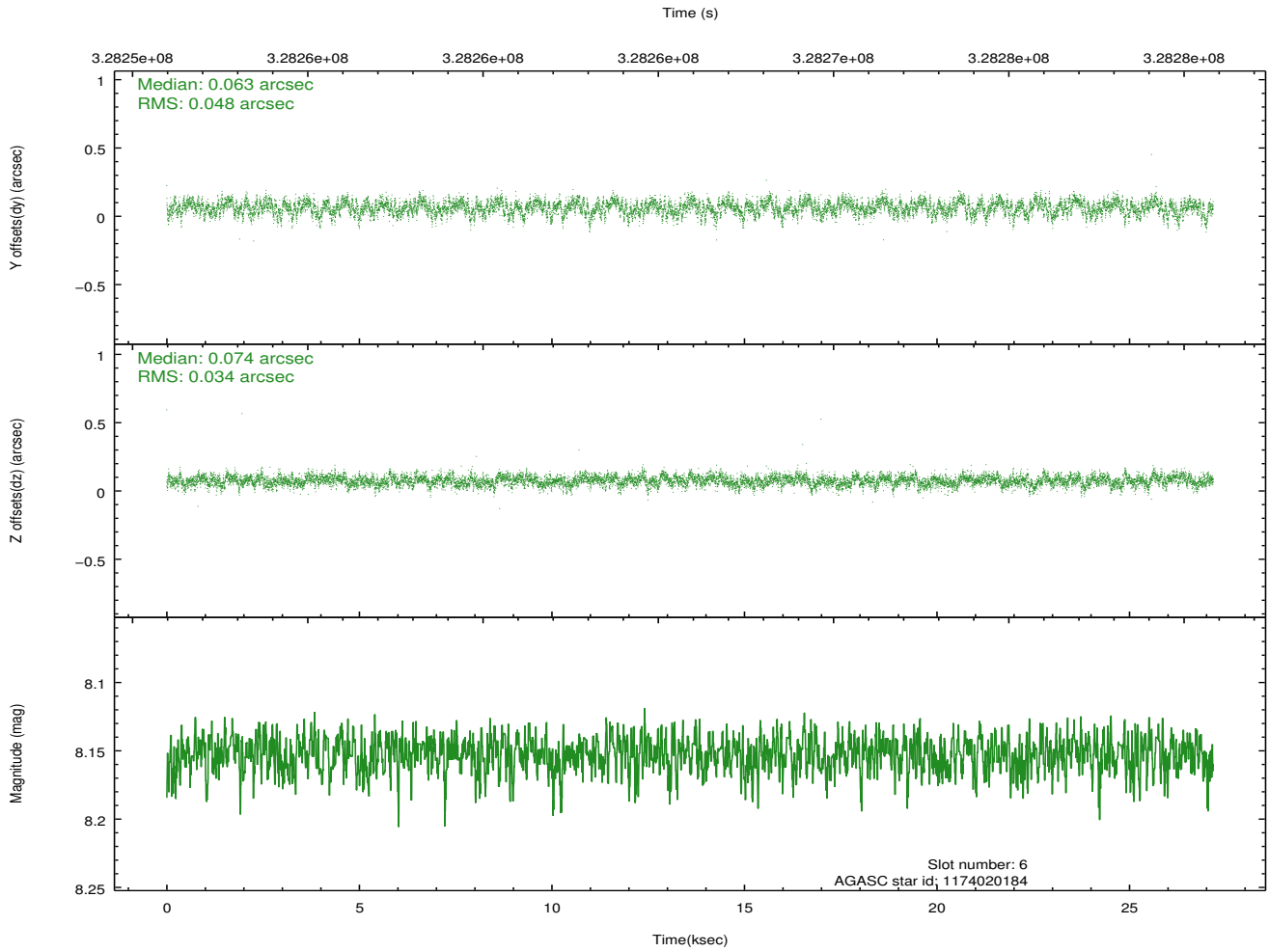
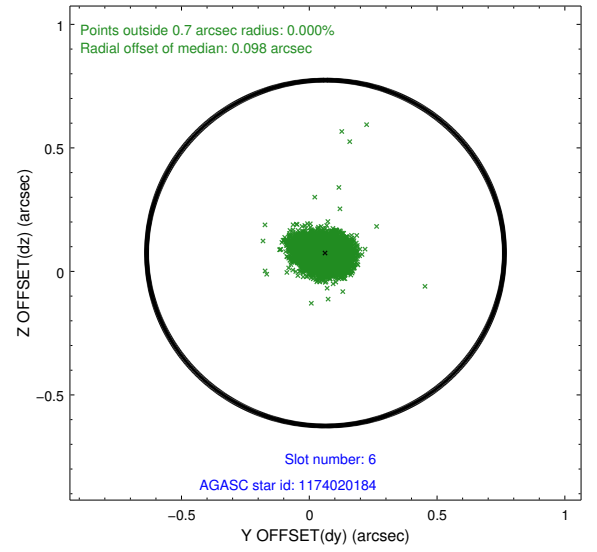
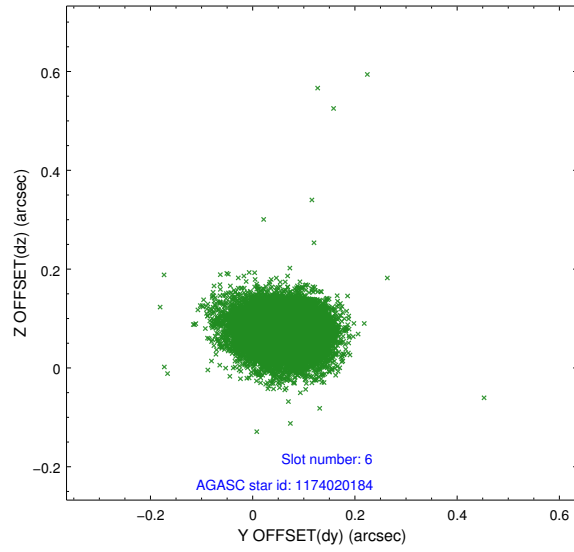
2.4.2 Slot 4



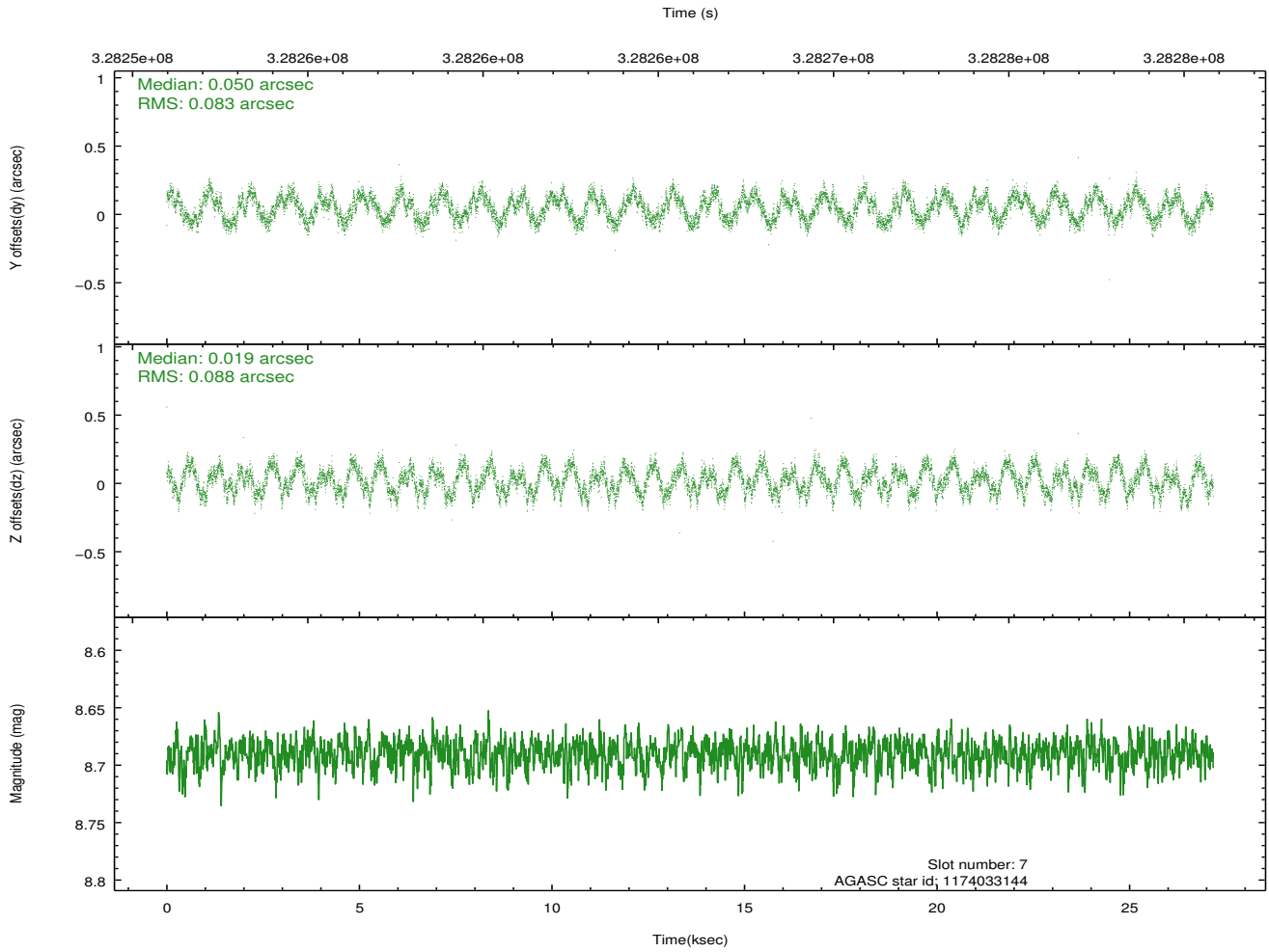
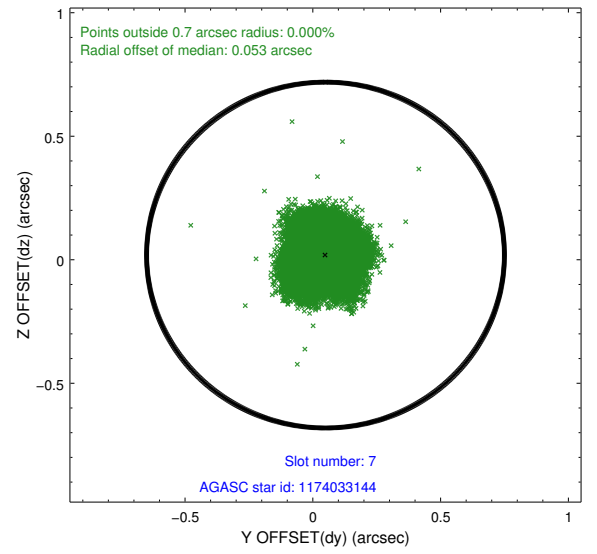
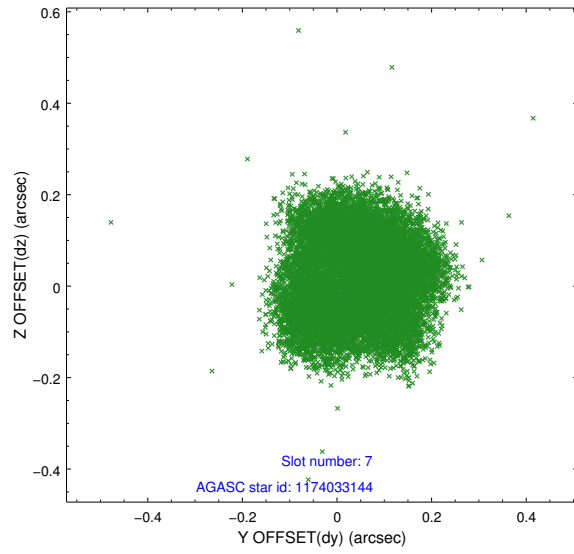
2.4.3 Slot 5



2.4.4 Slot 6

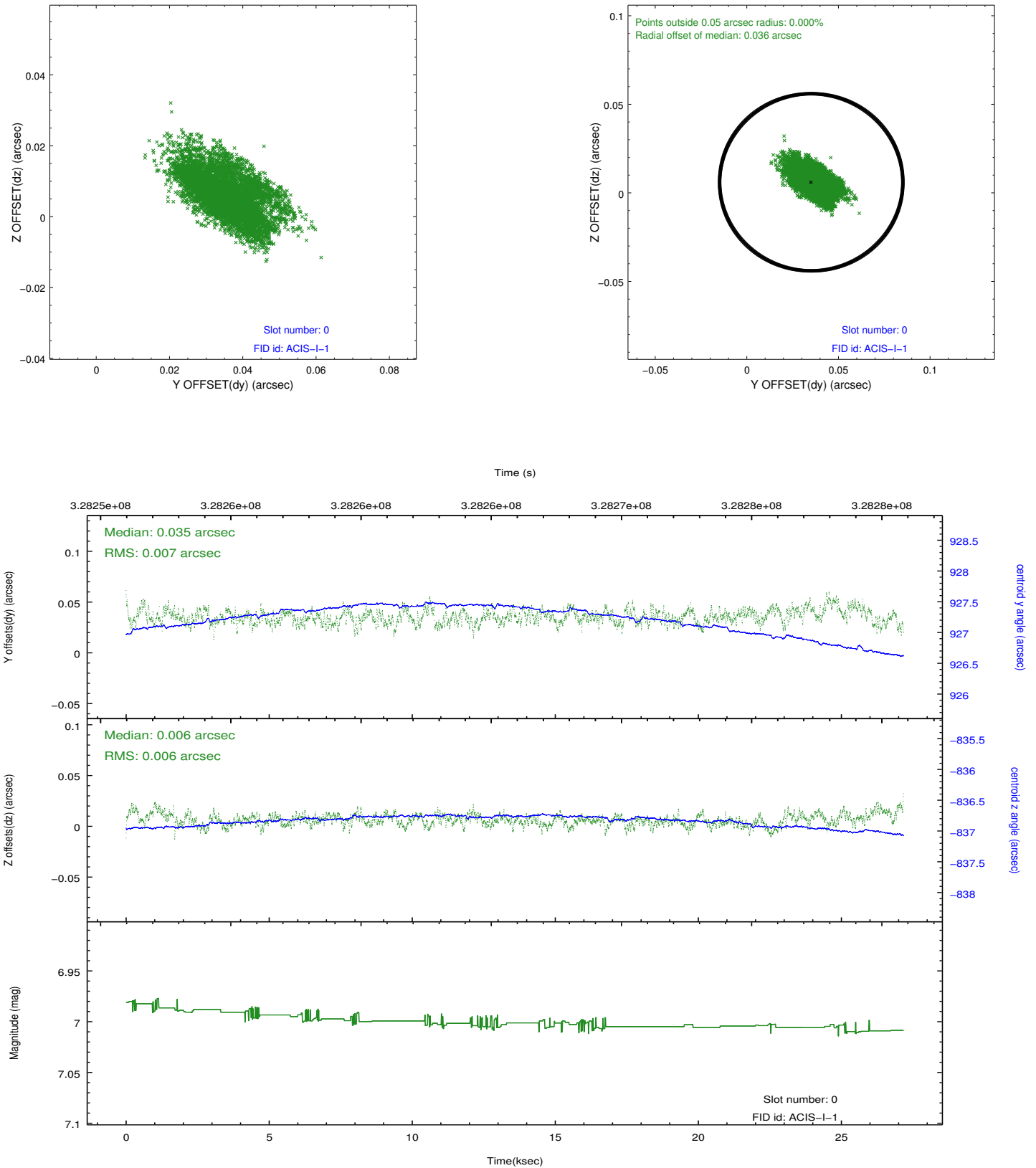


2.4.5 Slot 7

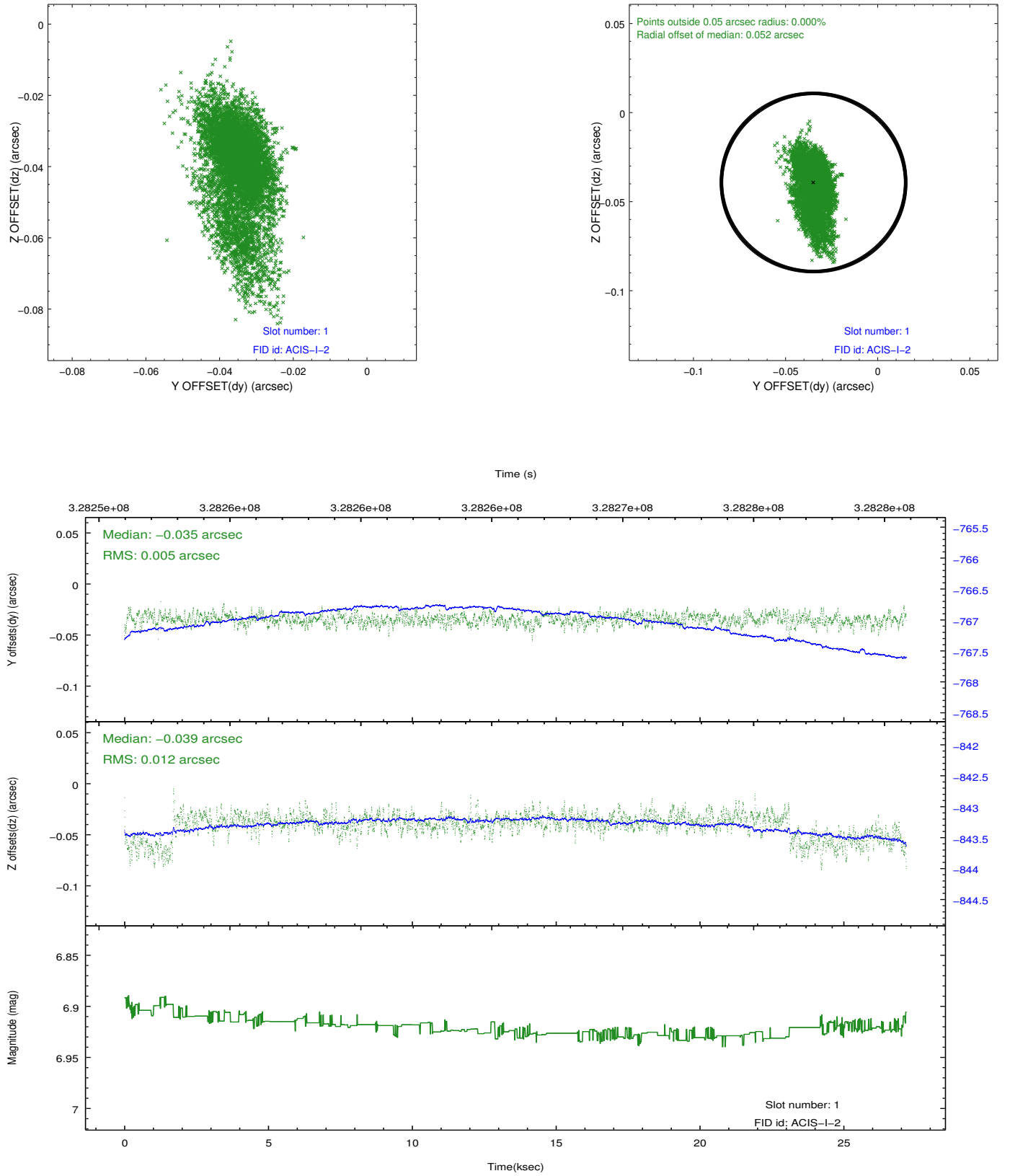


2.5 FID Slots

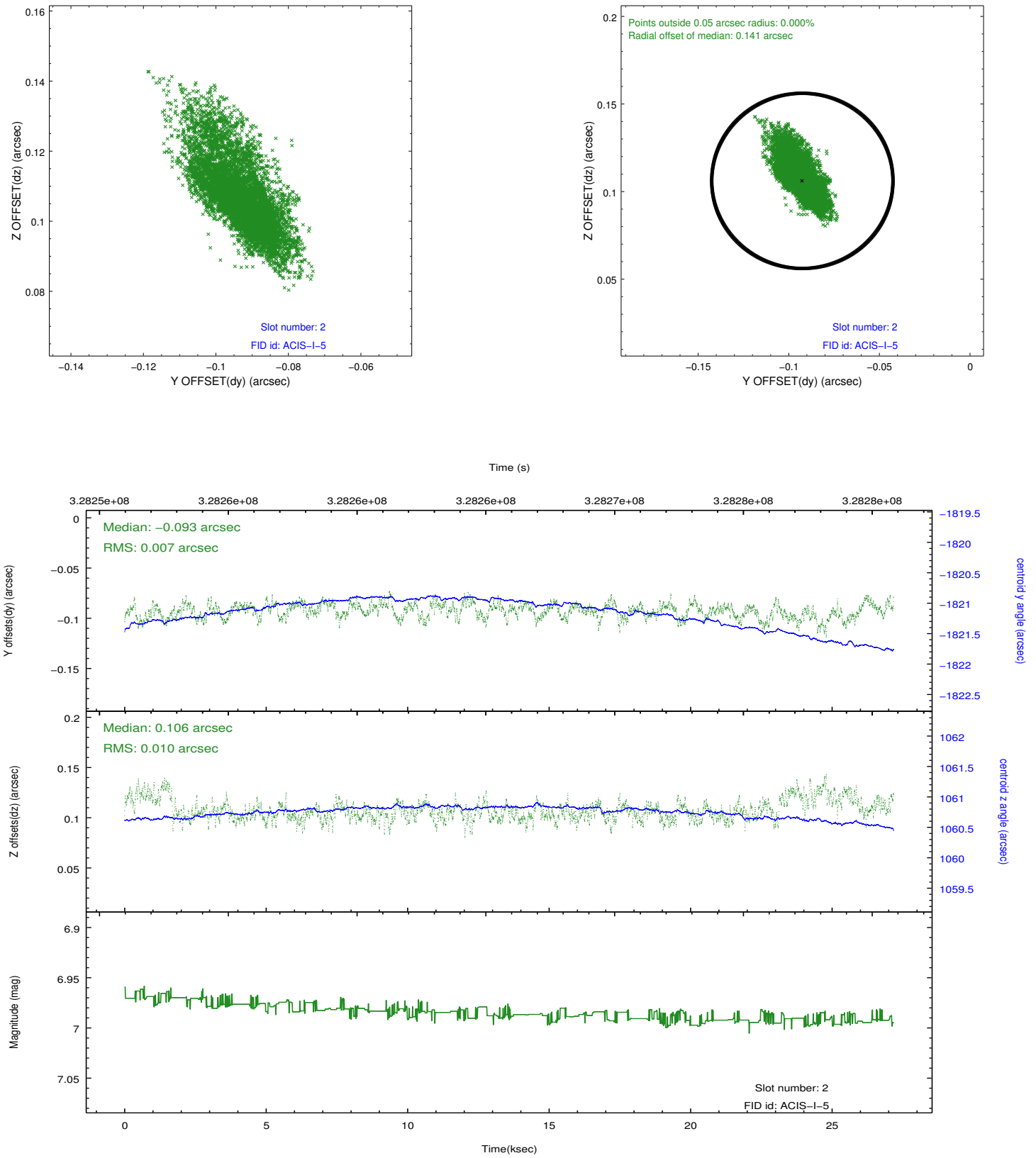
2.5.1 Slot 0



2.5.2 Slot 1



2.5.3 Slot 2



A Summary

A.1 Status

V&V Scientist	Beth Sundheim
V&V Date (YYYY-MM-DD)	2012.05.21
V&V Edition	1
V&V Disposition and Status	OK
V&V Charge Time	27.0655998

A.2 Comments