

V&V Reference Report

L2 ASCDS Version : 7.6.10

Observation 946 - L2 Version 001
Chandra X-Ray Center

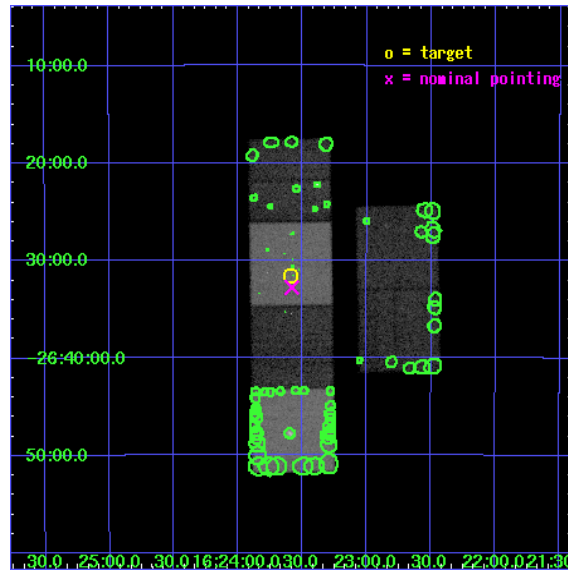
L2 Processing Date : May 27 2007

Contents

1	Front	2
2	OBI	3
2.1	OBI	3
2.1.1	Images	3
2.1.2	Bias	3
2.1.3	Parameters	4
2.1.4	Events	4
2.2	Compared Parameters	5
2.3	Aspect	6
2.4	Star Slots	9
2.4.1	Slot 3	9
2.4.2	Slot 4	10
2.4.3	Slot 5	11
2.4.4	Slot 6	12
2.4.5	Slot 7	13
2.5	FID Slots	14
2.5.1	Slot 0	14
2.5.2	Slot 1	15
2.5.3	Slot 2	16
3	Point Sources	17
A	Summary	18
A.1	Status	18
A.2	Comments	18

1 Front

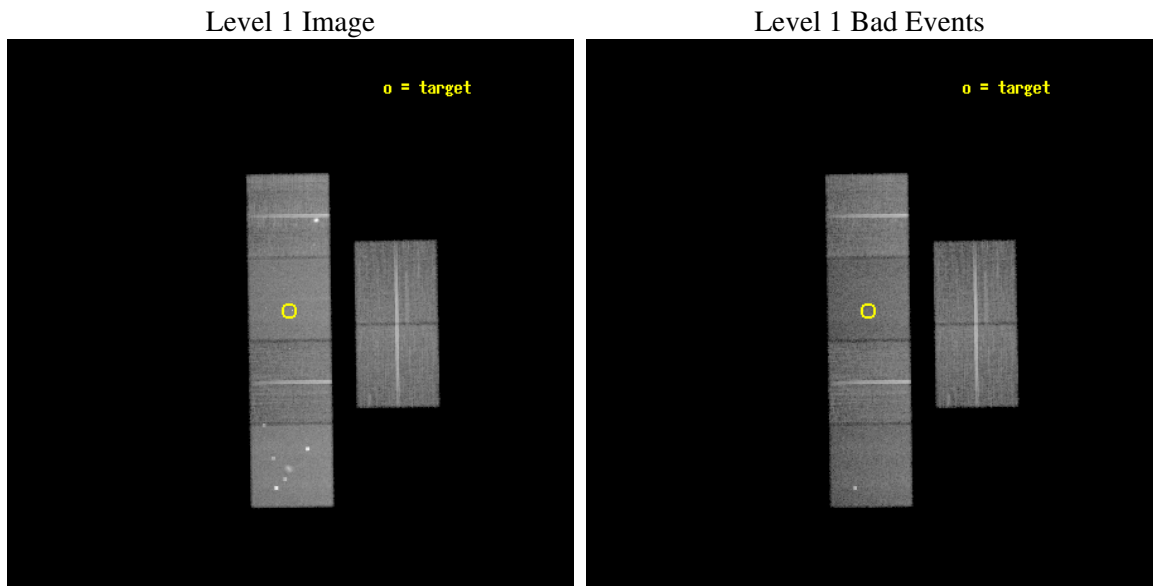
seq_num	300025
obs_id	946
title	A STUDY OF THE POPULATIONS OF FAINT X-RAY SOURCES IN GLOBULAR CLUSTERS
observer	Prof. Walter Lewin
object	NGC 6121
dtcycle	0
cycle	P
ra_targ	245.897917
dec_targ	-26.525306
ra_nom	245.89549684777
dec_nom	-26.546242024172
roll_nom	269.14607709346
revision	3
ontime	26147.200024351
livetime	25816.108433689
ontime2	26147.200024351
ontime3	26143.959064111
ontime5	26147.200024351
ontime6	26147.200024351
ontime7	26147.200024351
ontime8	26147.200024351
l2events	266422



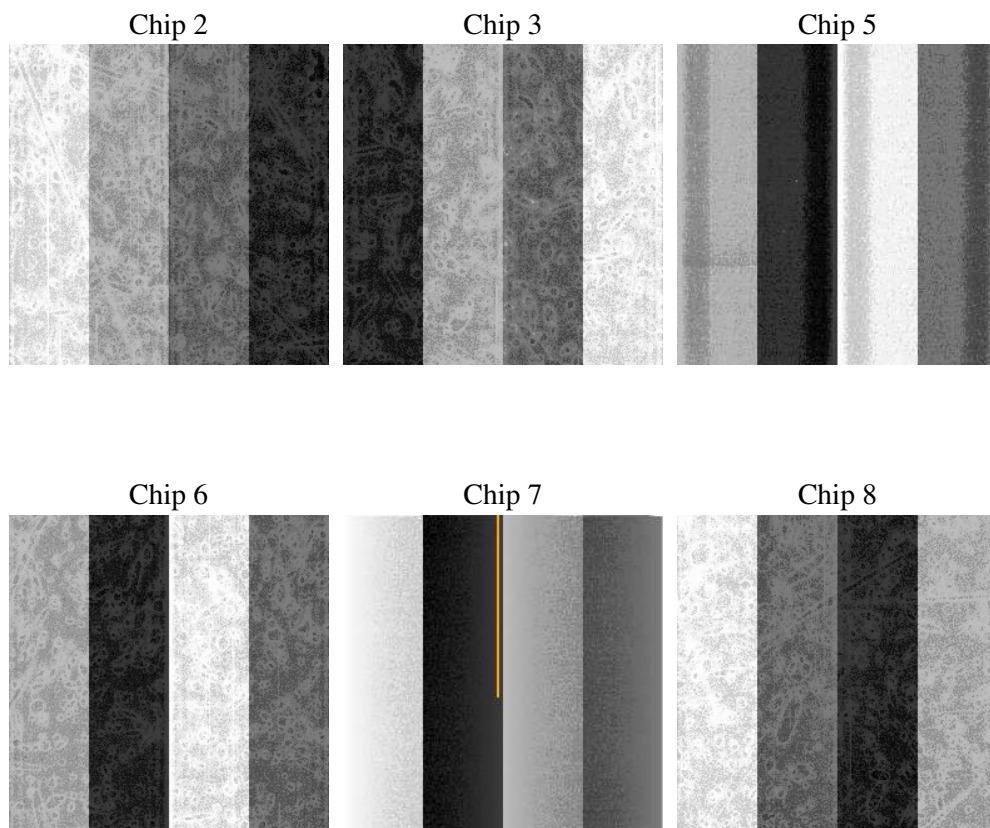
2 OBI

2.1 OBI

2.1.1 Images



2.1.2 Bias



2.1.3 Parameters

obi_num	0
ascdsver	7.6.10
caldsver	3.4.0
date	2007-05-27T16:56:04
revision	3

sched_exp_time	26000.000000
ontime	26147.200024351
ontime2	26147.200024351
ontime3	26143.959064111
ontime5	26147.200024351
ontime6	26147.200024351
ontime7	26147.200024351
ontime8	26147.200024351
l1events	1207614

2.1.4 Events

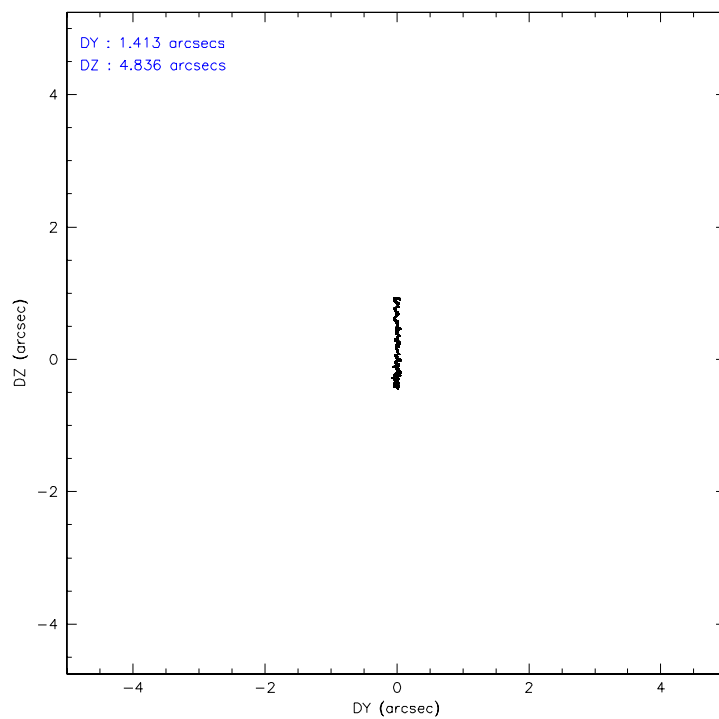
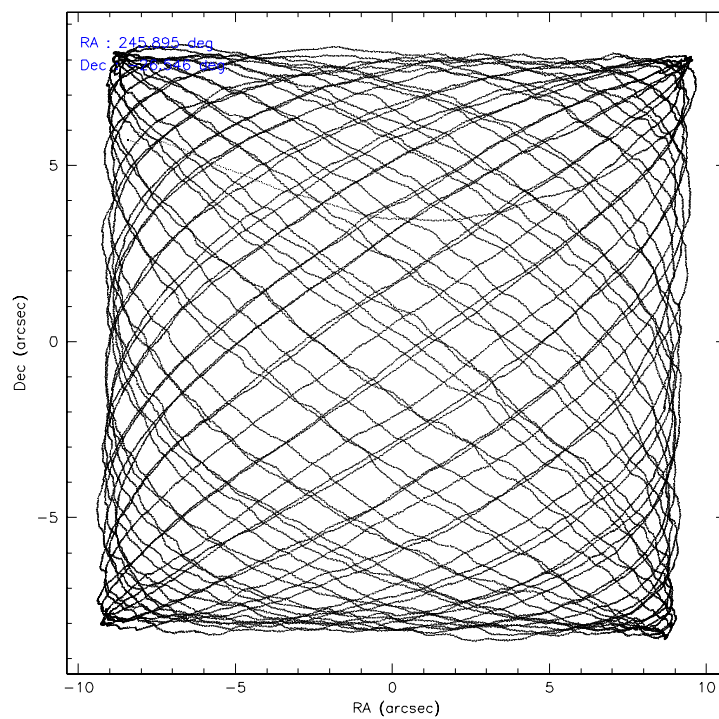
	ccd 2	ccd 3	ccd 5	ccd 6	ccd 7	ccd 8
level 1 events	183412	170263	242302	177799	207689	226149
rejected events	164346	150909	123234	157257	118703	175834
rejected %	89%	88%	50%	88%	57%	77%

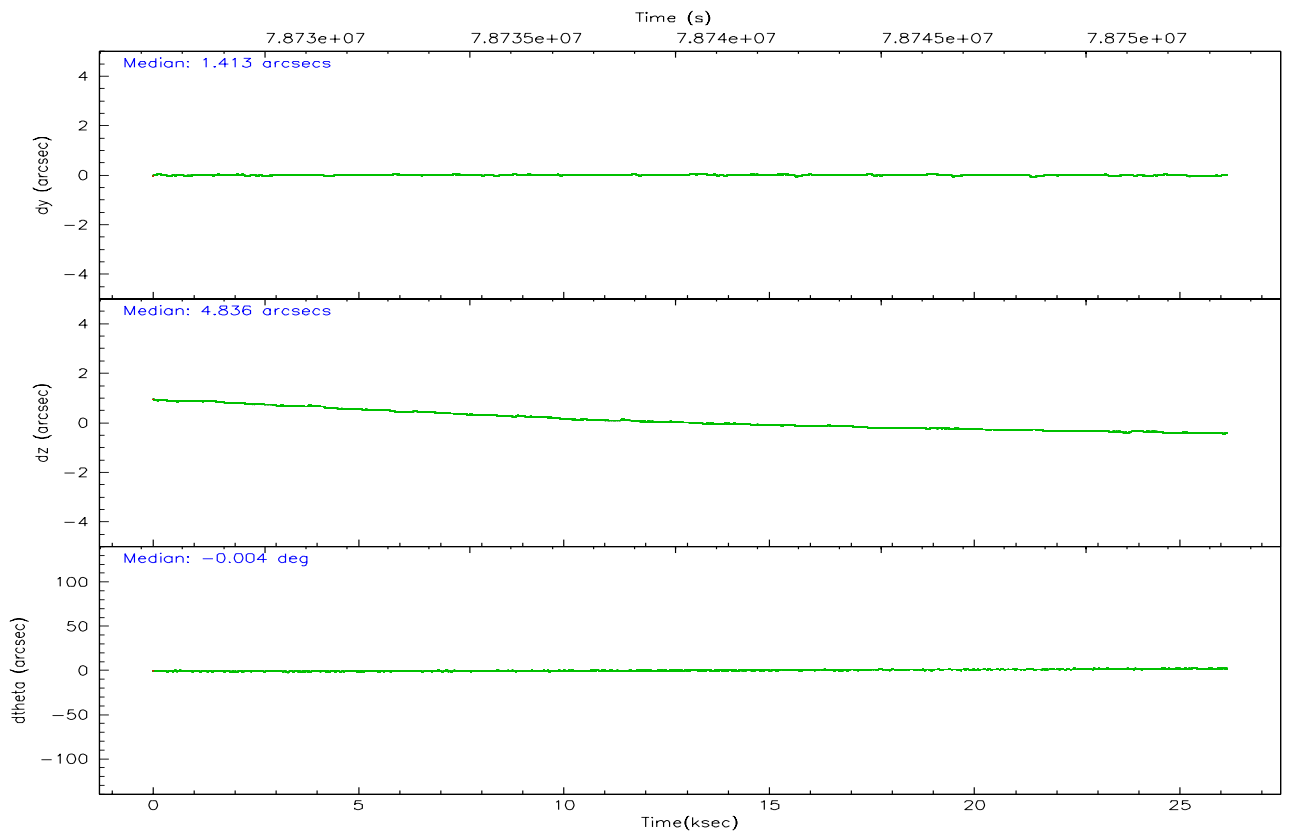
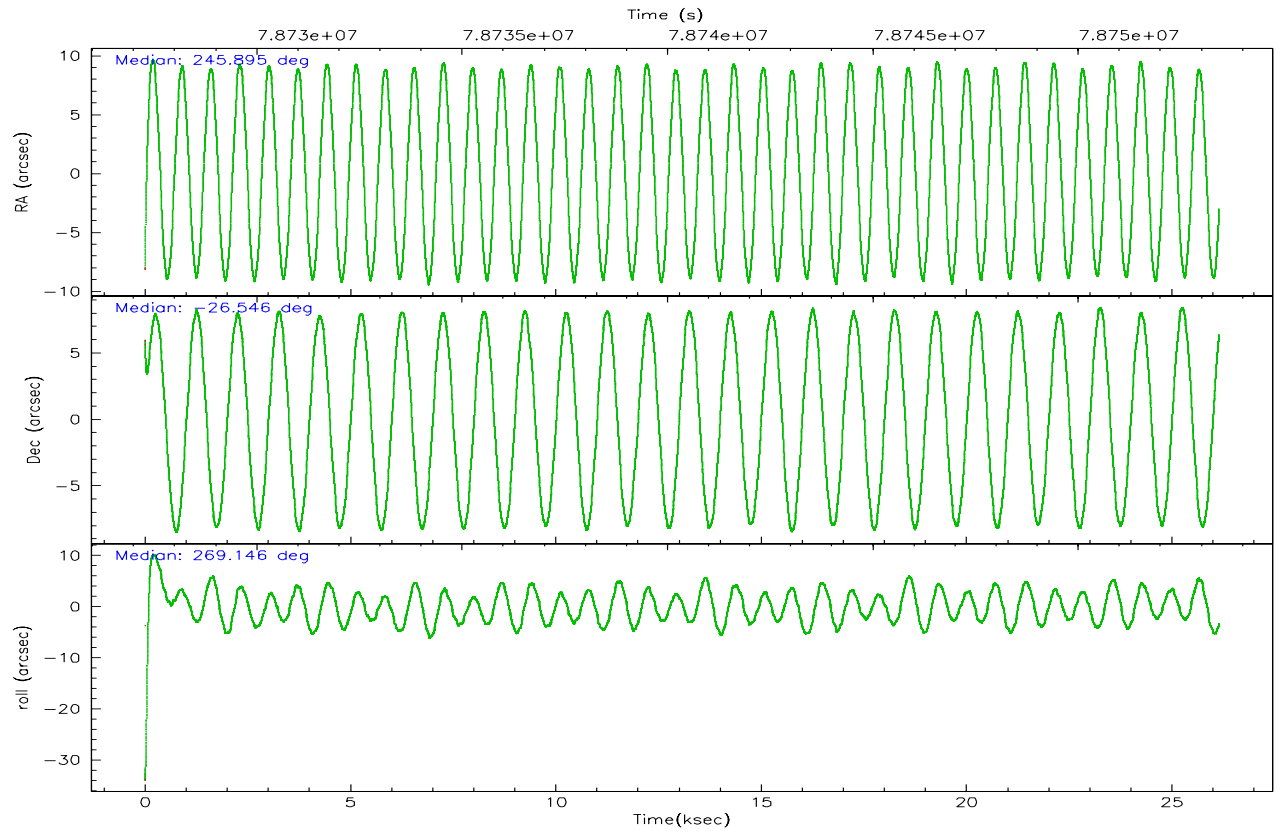
	ccd 2	ccd 3	ccd 5	ccd 6	ccd 7	ccd 8
grade 0 events	8055	8823	19457	8977	9117	21281
	4%	5%	8%	5%	4%	9%
grade 1 events	81	76	274	76	211	166
	0%	0%	0%	0%	0%	0%
grade 2 events	4187	3766	35146	3988	17696	9351
	2%	2%	14%	2%	8%	4%
grade 3 events	1833	1883	5562	1929	8395	4938
	0%	1%	2%	1%	4%	2%
grade 4 events	1829	1764	5205	1920	8434	4565
	0%	1%	2%	1%	4%	2%
grade 5 events	5617	5922	17798	6748	19956	8341
	3%	3%	7%	3%	9%	3%
grade 6 events	3247	3188	54131	3800	45678	10382
	1%	1%	22%	2%	21%	4%
grade 7 events	158563	144841	104729	150361	98202	167125
	86%	85%	43%	84%	47%	73%

2.2 Compared Parameters

Parameter	Planned	Actual	Parameter	Planned	Actual
Instrument	ACIS	ACIS	Obspar format version number	6	6
Detector	ACIS-235678	ACIS-235678	Obspar file type	PREDICTED	ACTUAL
Grating	NONE	NONE	Obspar update status	NONE	UPDATED
Data mode	FAINT	FAINT	Number of optional ACIS chips dropped	0	0
Observation mode	POINTING	POINTING	On-chip summing requested	N	N
Pointing RA	245.880465	245.8954968477694	Subarray requested	NONE	NONE
Pointing Dec	-26.522361	-26.54624202417213	Alternating exposures requested	N	N
Pointing Roll	268.982743	269.1460770934565	Primary exposure time	3.200000	3.2
SIM focus pos (mm)	-0.684267	-0.6828225247311905			
SIM defocus (mm)	0	0.001444936568705701			
SIM translation stage pos (mm)	-190.132523	-190.1425803651734			
SIM translation stage offset (mm)	0	0.01005778216563158			
Observation start time	78727432.184000	78726326.924652			
Observation start date	2000-06-30T04:42:48	2000-06-30T04:25:26			
Observation end time	78753432.184000	78753896.350668			
Observation end date	2000-06-30T11:56:08	2000-06-30T12:04:56			
Read mode	TIMED	TIMED			

2.3 Aspect



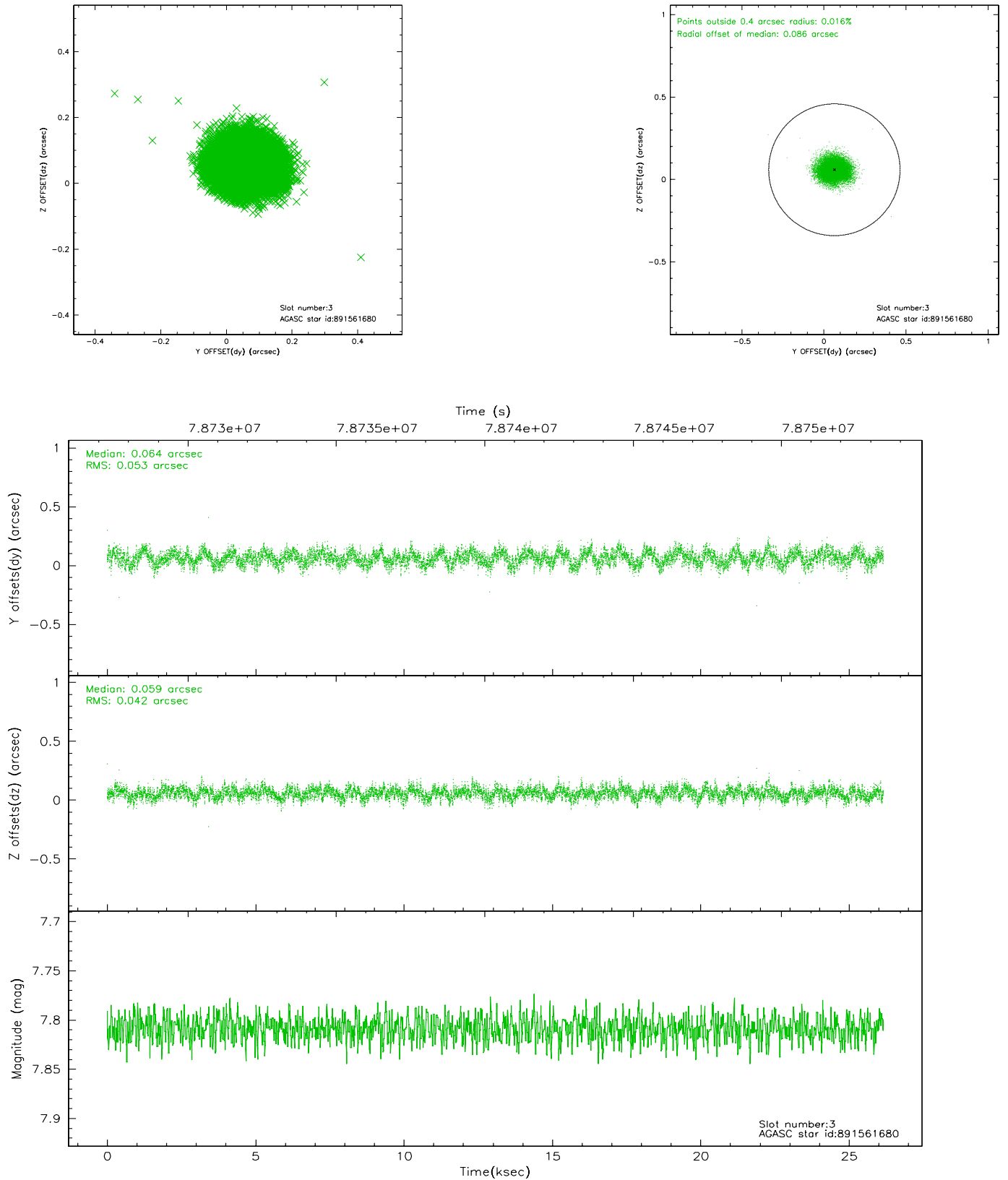


Slot Statistics

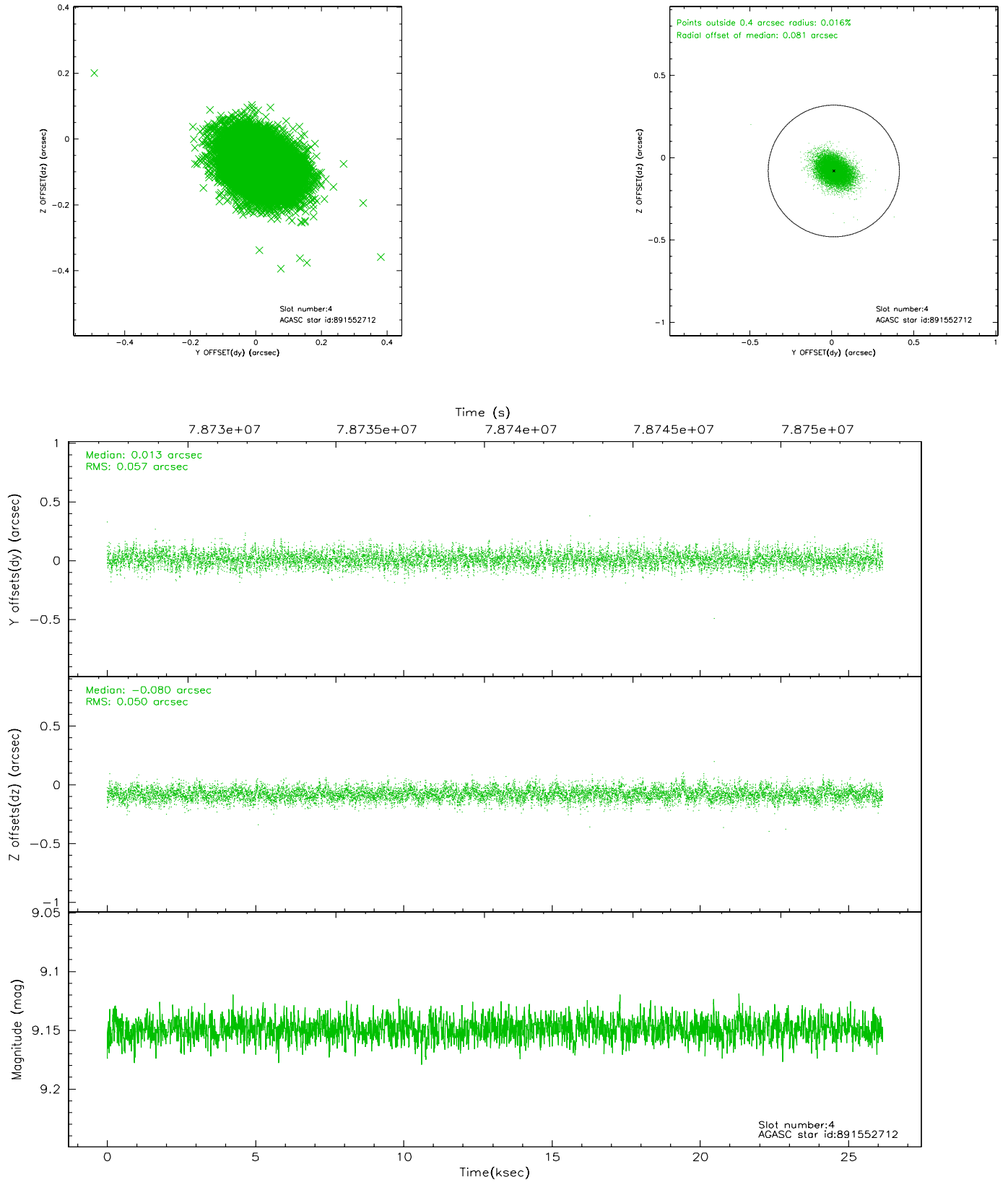
slot	status	id	mag	n_pts	med_dy	med_dz	dr1	dr2	ra	dec	mean_y	mean_z
0	FID	ACIS-S-2	7.11	6380	-0.019	0.020	0.010	0.016	0.000000	0.000000	-754.03	-1725.98
1	FID	ACIS-S-4	7.21	6380	-0.054	0.003	0.005	0.009	0.000000	0.000000	2159.16	182.38
2	FID	ACIS-S-5	7.24	6378	0.041	-0.015	0.011	0.018	0.000000	0.000000	-1806.67	176.15
3	GUIDE	891561680	7.81	12758	0.064	0.059	0.073	0.115	246.126760	-27.151147	2250.64	829.62
4	GUIDE	891552712	9.15	12759	0.013	-0.080	0.080	0.131	245.946545	-26.271054	-907.57	197.71
5	GUIDE	891027728	9.41	12756	-0.214	-0.013	0.086	0.142	245.449689	-25.946465	-2045.61	-1430.59
6	GUIDE	891027520	9.72	12751	0.048	-0.045	0.113	0.197	246.024674	-26.131311	-1415.16	441.38
7	GUIDE	891560248	9.26	12752	0.086	0.088	0.084	0.140	246.231067	-27.113231	2108.92	1161.75

2.4 Star Slots

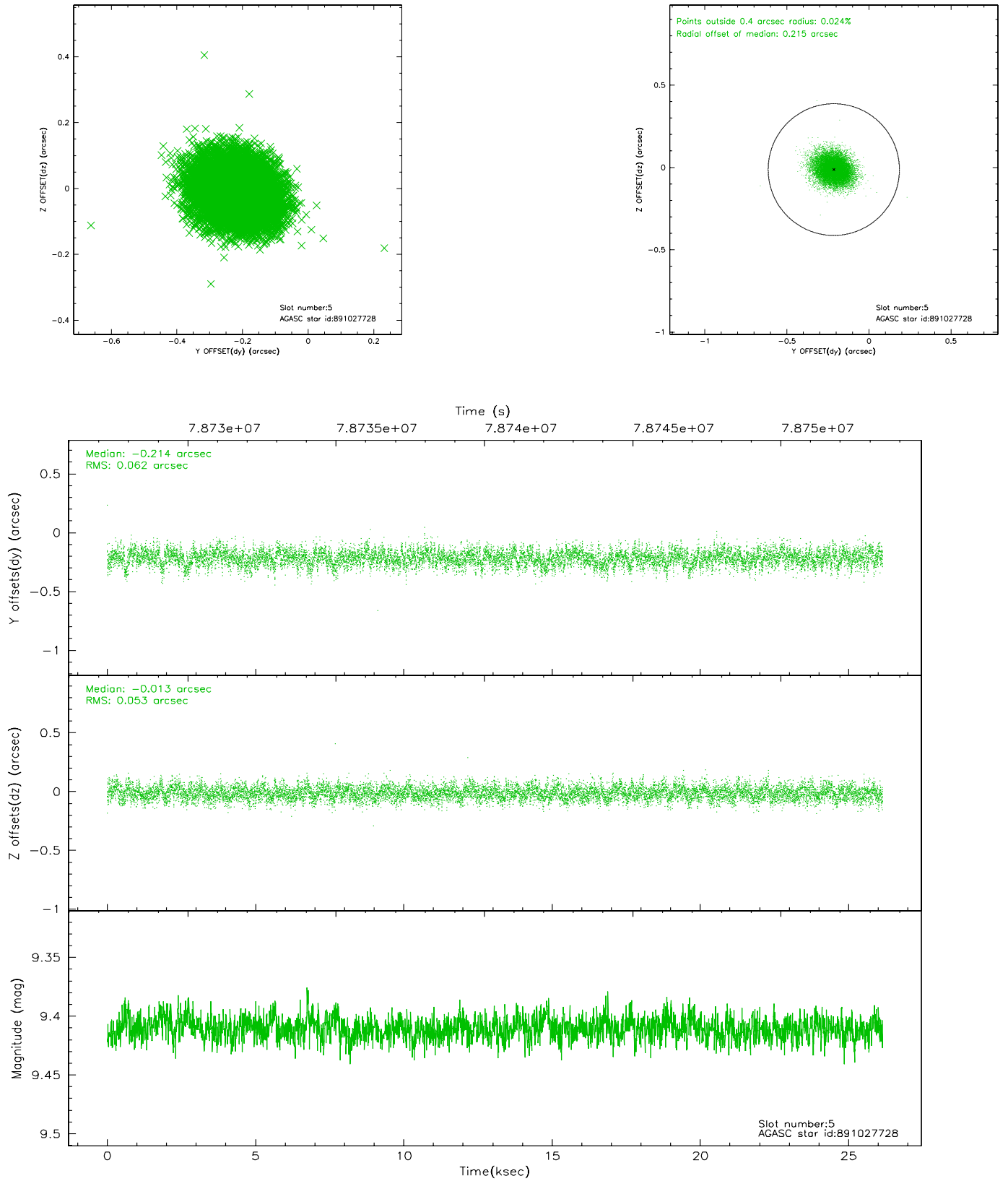
2.4.1 Slot 3



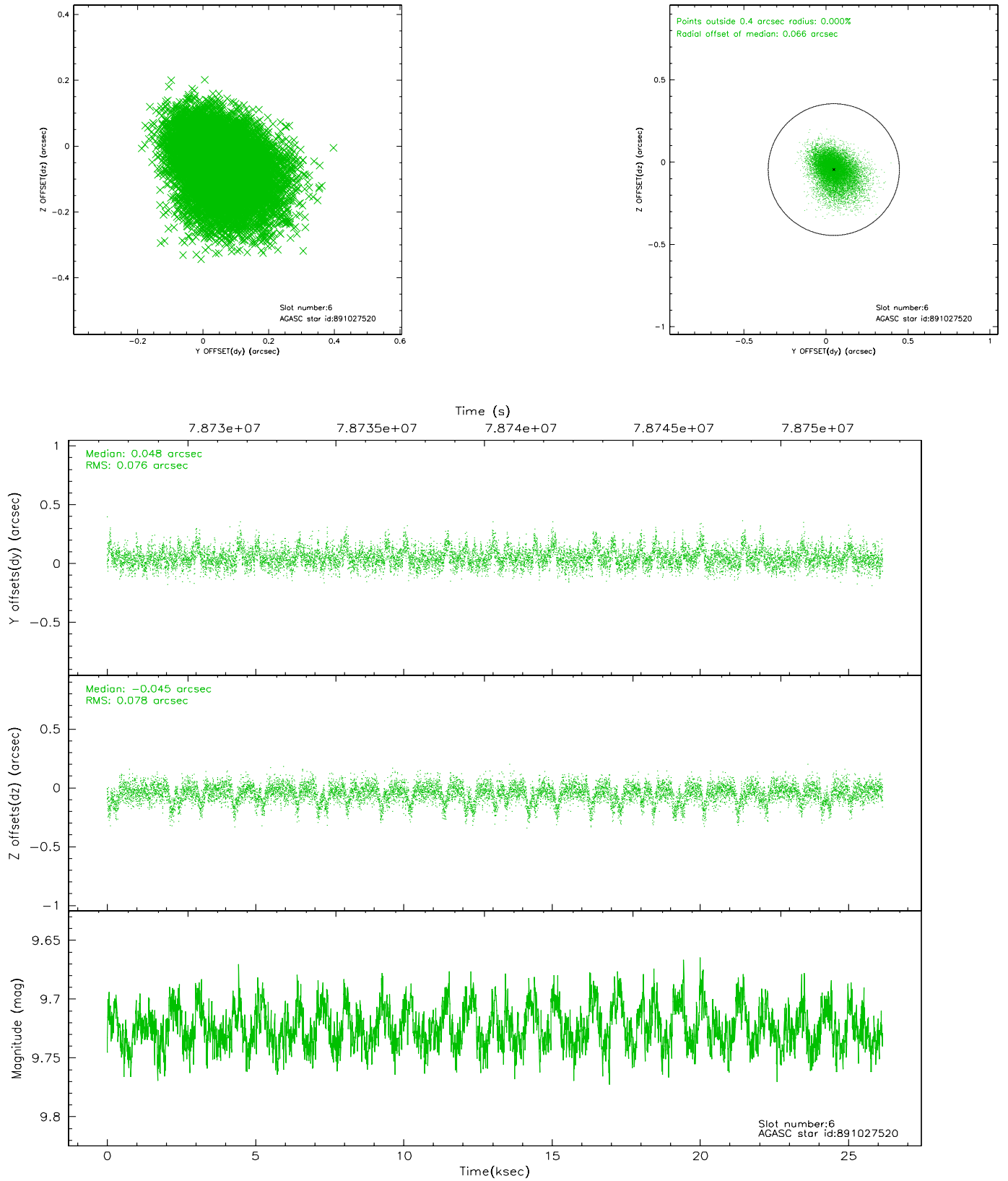
2.4.2 Slot 4



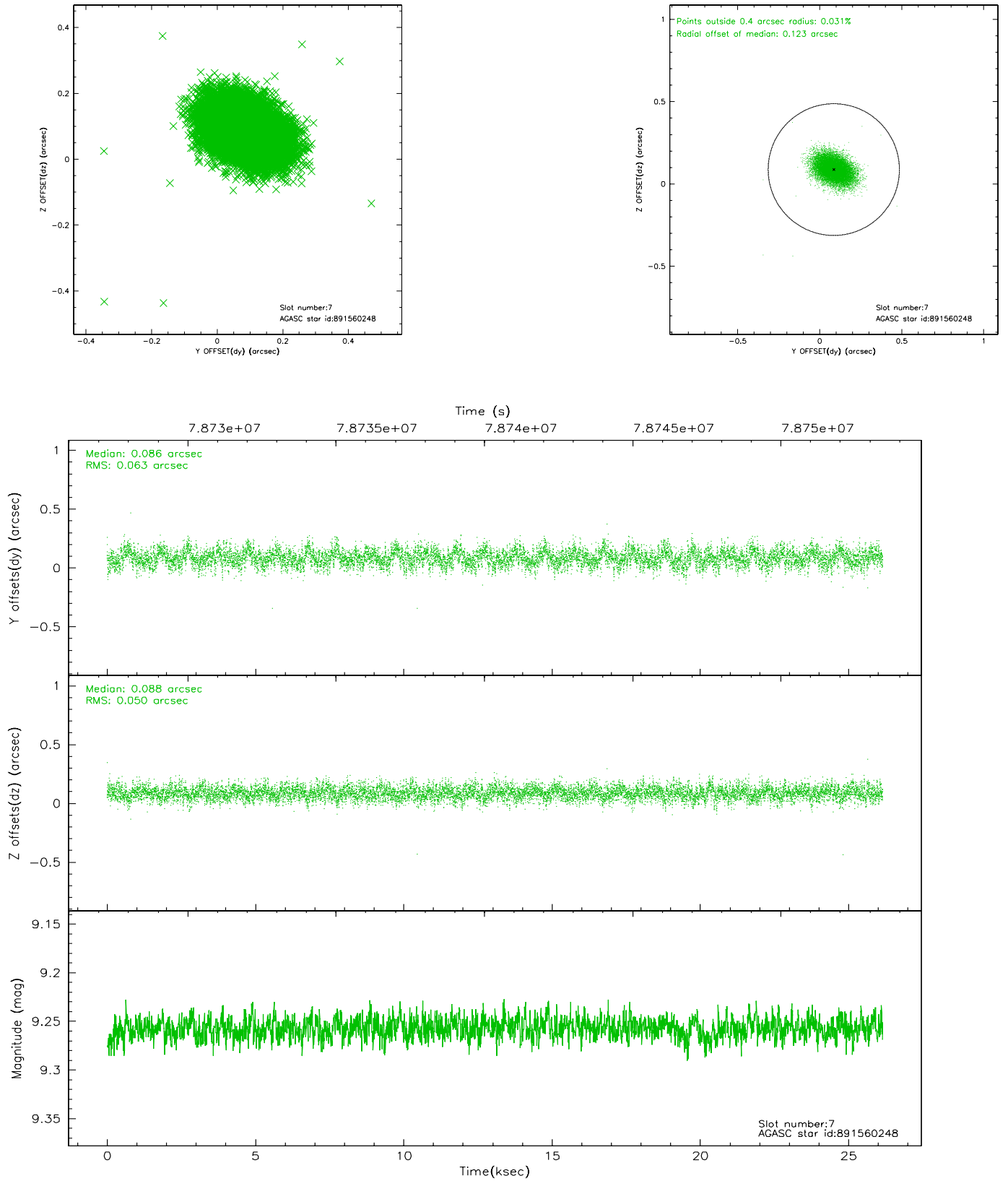
2.4.3 Slot 5



2.4.4 Slot 6

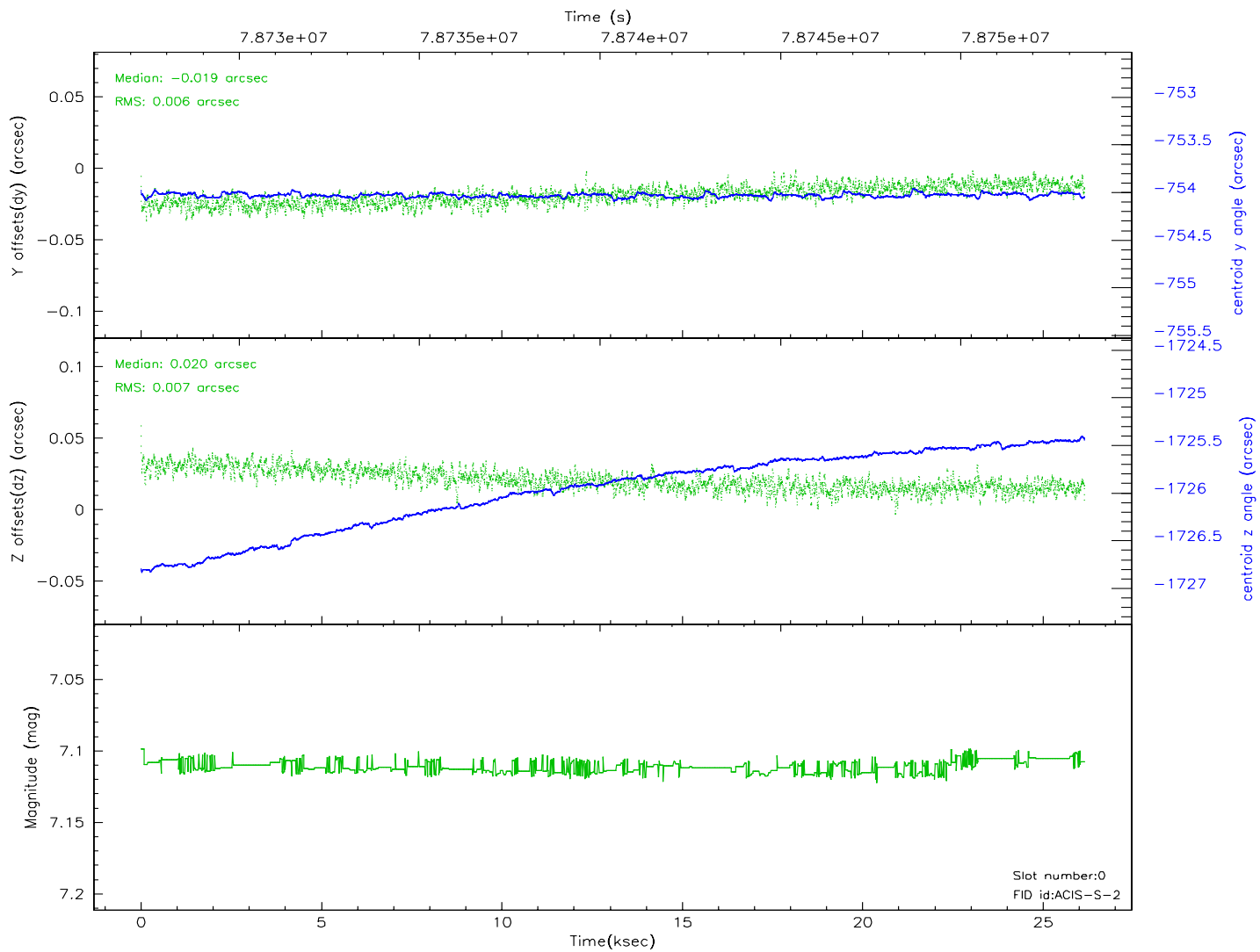
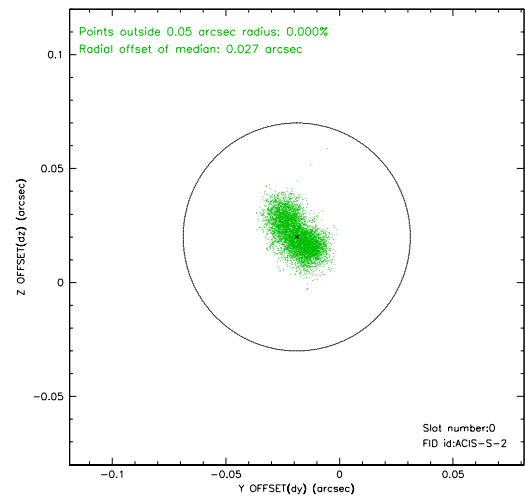
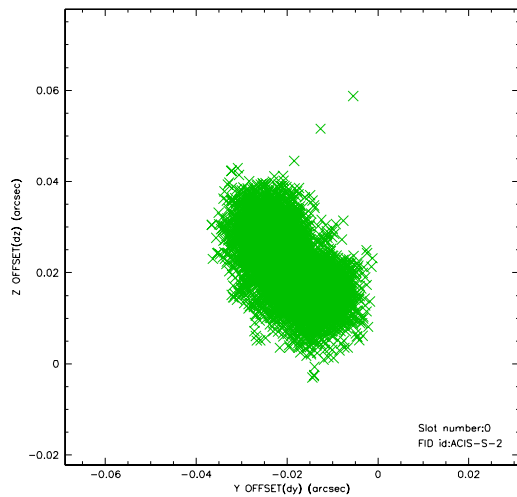


2.4.5 Slot 7

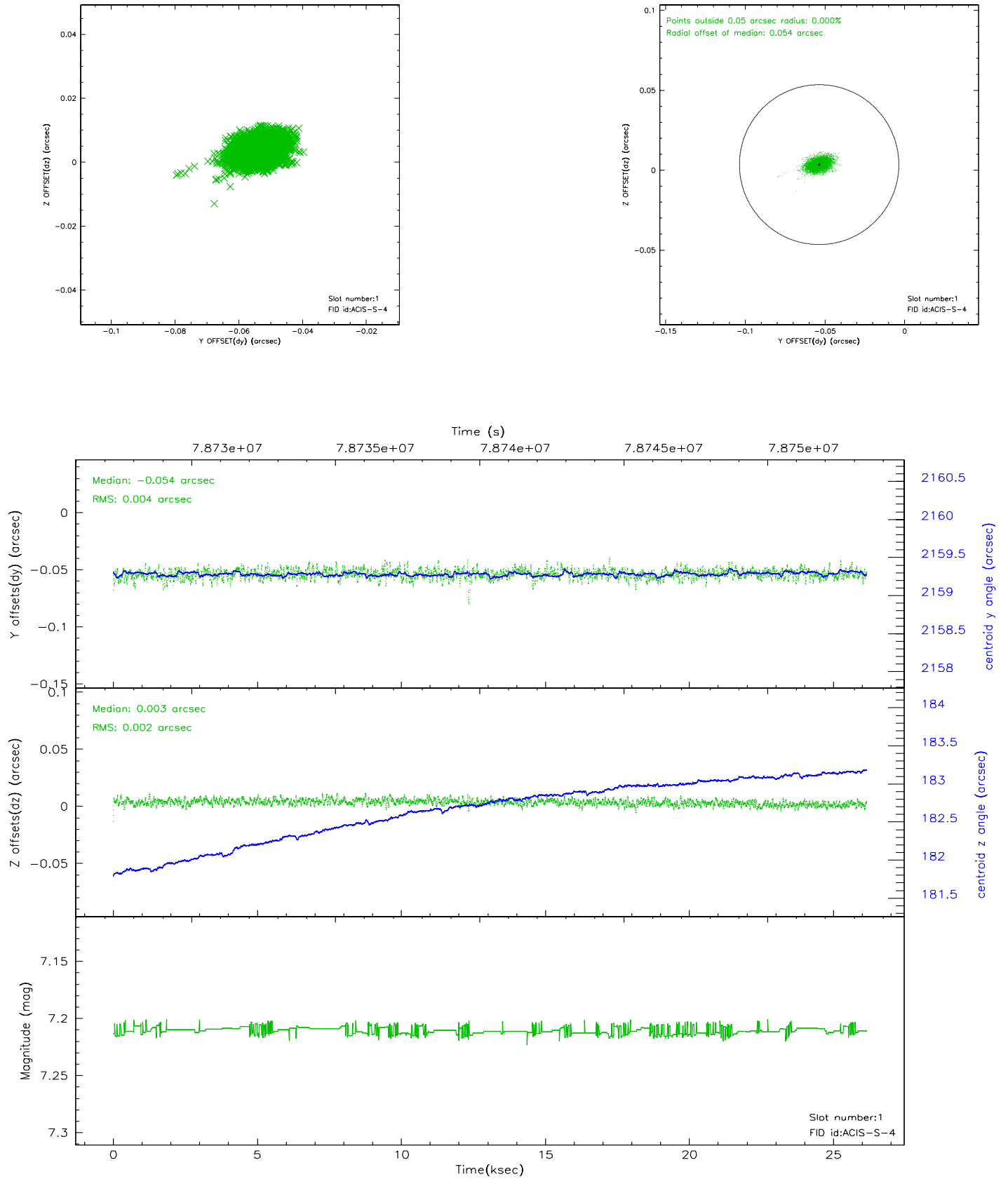


2.5 FID Slots

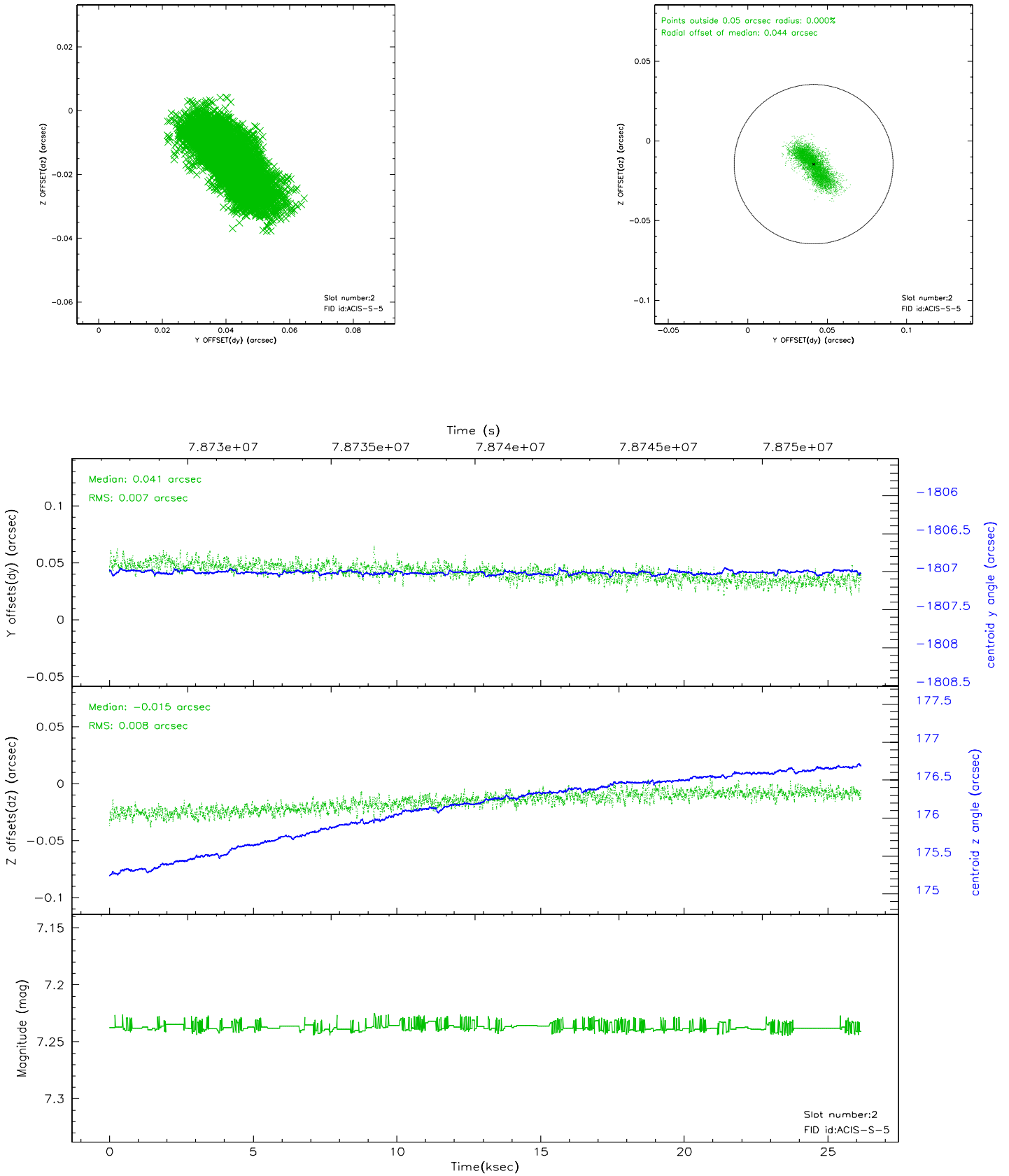
2.5.1 Slot 0



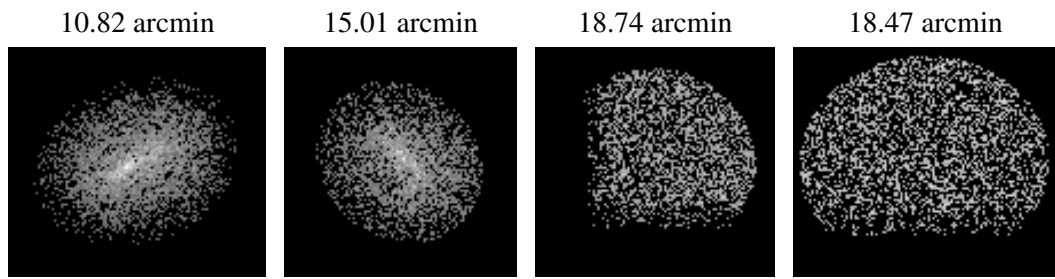
2.5.2 Slot 1



2.5.3 Slot 2



3 Point Sources



A Summary

A.1 Status

V&V Scientist	Beth Sundheim
V&V Date (YYYY-MM-DD)	2007.05.29
V&V Edition	1
V&V Disposition and Status	OK
V&V Charge Time	26.147

A.2 Comments