

V&V Reference Report

L2 ASCDS Version : 8.4.4

Observation 9226 - L2 Version 2
Chandra X-Ray Center

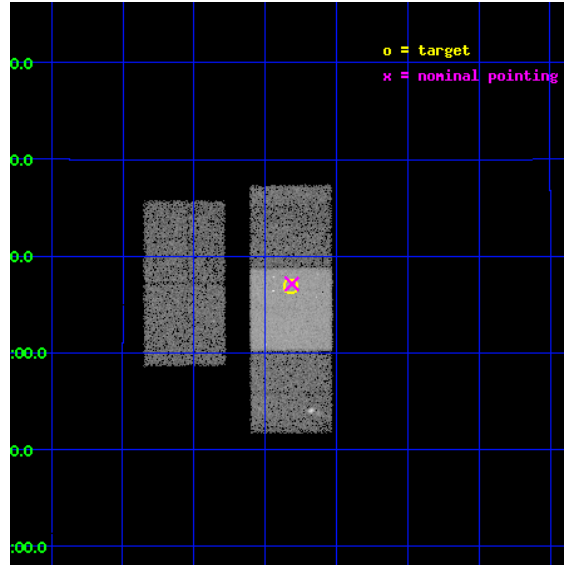
L2 Processing Date : May 10 2012

Contents

1	Front	2
2	OBI	3
2.1	OBI	3
2.1.1	Images	3
2.1.2	Bias	3
2.1.3	Parameters	4
2.1.4	Events	4
2.2	Compared Parameters	5
2.3	Aspect	6
2.4	Star Slots	9
2.4.1	Slot 3	9
2.4.2	Slot 4	10
2.4.3	Slot 5	11
2.4.4	Slot 6	12
2.4.5	Slot 7	13
2.5	FID Slots	14
2.5.1	Slot 0	14
2.5.2	Slot 1	15
2.5.3	Slot 2	16
A	Summary	17
A.1	Status	17
A.2	Comments	17

1 Front

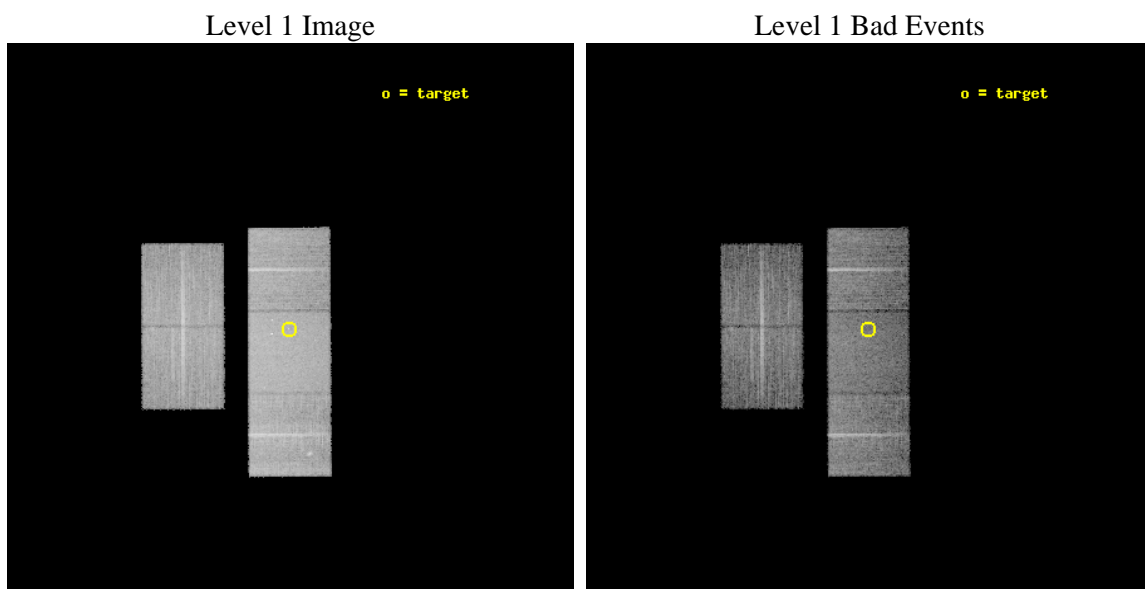
seq_num	701667	Sequence number
obs_id	9226	Observation id
title	Deconstructing the Accretion Disk Wind in Quasars	Proposal title
observer	Dr. Gordon Richards	Principal investigator
object	SDSS J1419+0606	Source name
dtcycle	0	
cycle	P	events from which exps? Prim/Second/Both
ra_targ	214.955833	Observer's specified target RA [deg]
dec_targ	6.115	Observer's specified target Dec [deg]
ra_nom	214.95325204216	Nominal RA [deg]
dec_nom	6.1191449605844	Nominal Dec [deg]
roll_nom	89.769416213458	Nominal Roll [deg]
revision	2	Processing version of data
ontime	10053.300077319	Sum of GTIs [s]
livetime	9921.9463106771	Livetime [s]
ontime2	10053.300077319	Sum of GTIs [s]
ontime3	10053.300077319	Sum of GTIs [s]
ontime6	10053.300077319	Sum of GTIs [s]
ontime7	10053.300077319	Sum of GTIs [s]
ontime8	10053.300077319	Sum of GTIs [s]
l2events	97894	Number of level 2 events



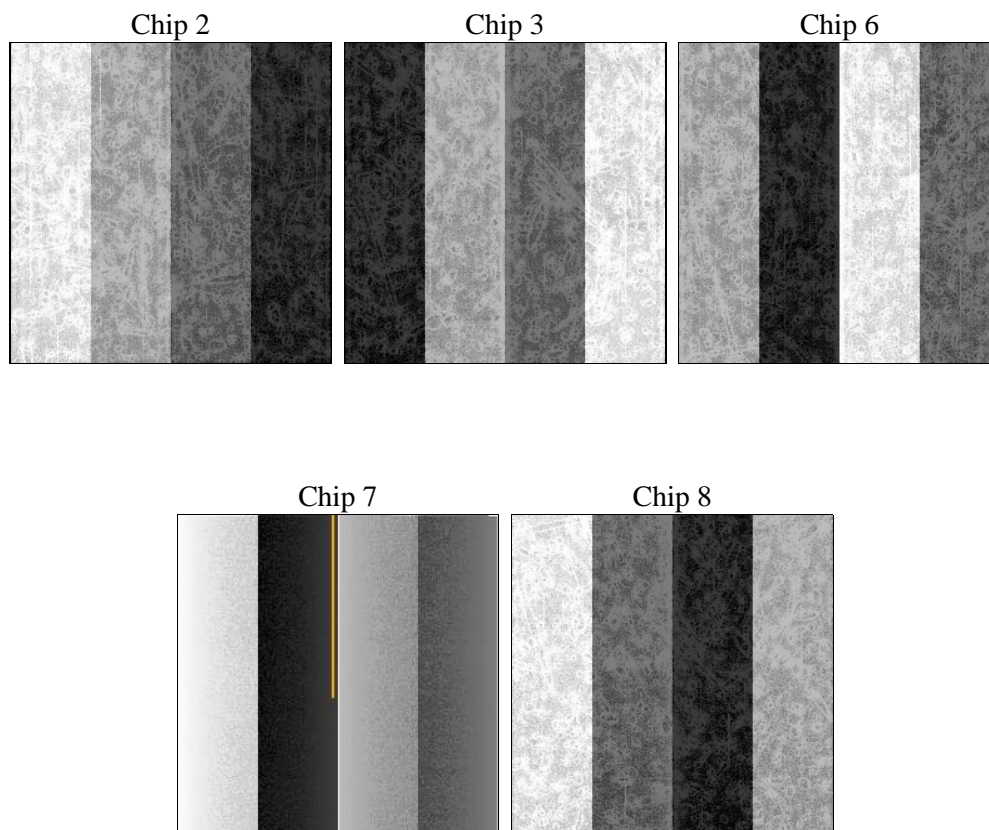
2 OBI

2.1 OBI

2.1.1 Images



2.1.2 Bias



2.1.3 Parameters

obi_num	0	Obi number	sched_exp_time	9900.000000	[s] Scheduled observation exposure time
ascdsver	8.4.4	Processing system revision	ontime	10053.300077319	Sum of GTIs [s]
caldsver	4.4.9	 	ontime2	10053.300077319	Sum of GTIs [s]
date	2012-05-10T22:59:51	Date and time of file creation	ontime3	10053.300077319	Sum of GTIs [s]
revision	2	Processing version of data	ontime6	10053.300077319	Sum of GTIs [s]
			ontime7	10053.300077319	Sum of GTIs [s]
			ontime8	10053.300077319	Sum of GTIs [s]
			l1events	543508	Number of level 1 events

2.1.4 Events

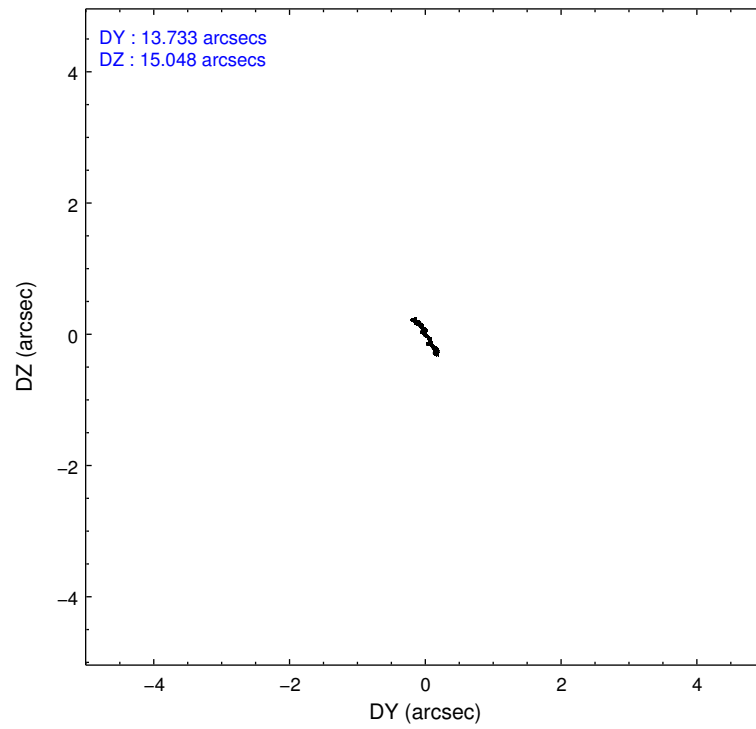
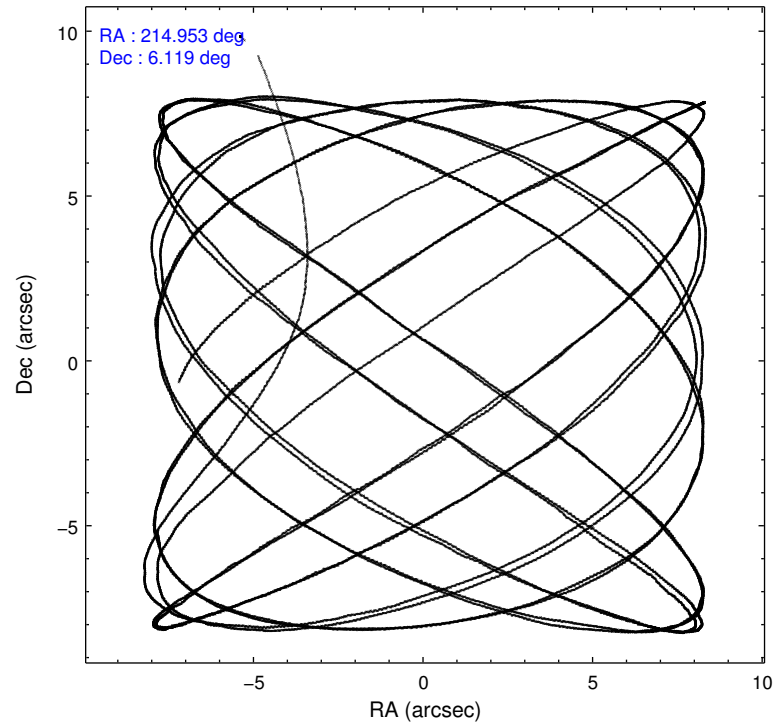
	ccd 2	ccd 3	ccd 6	ccd 7	ccd 8
level 1 events	91379	92417	99932	135255	124525
rejected events	80104	81113	88217	78811	95197
rejected %	87%	87%	88%	58%	76%

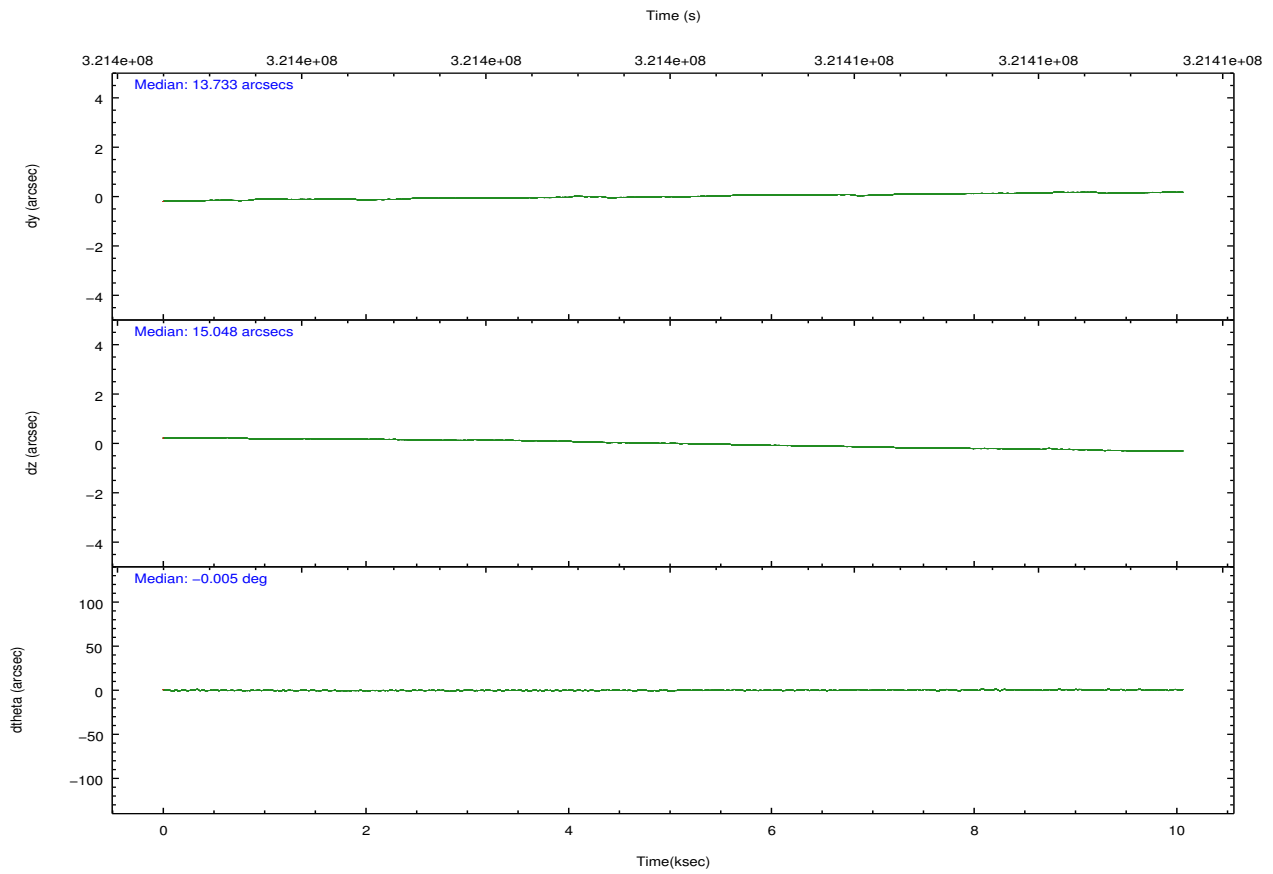
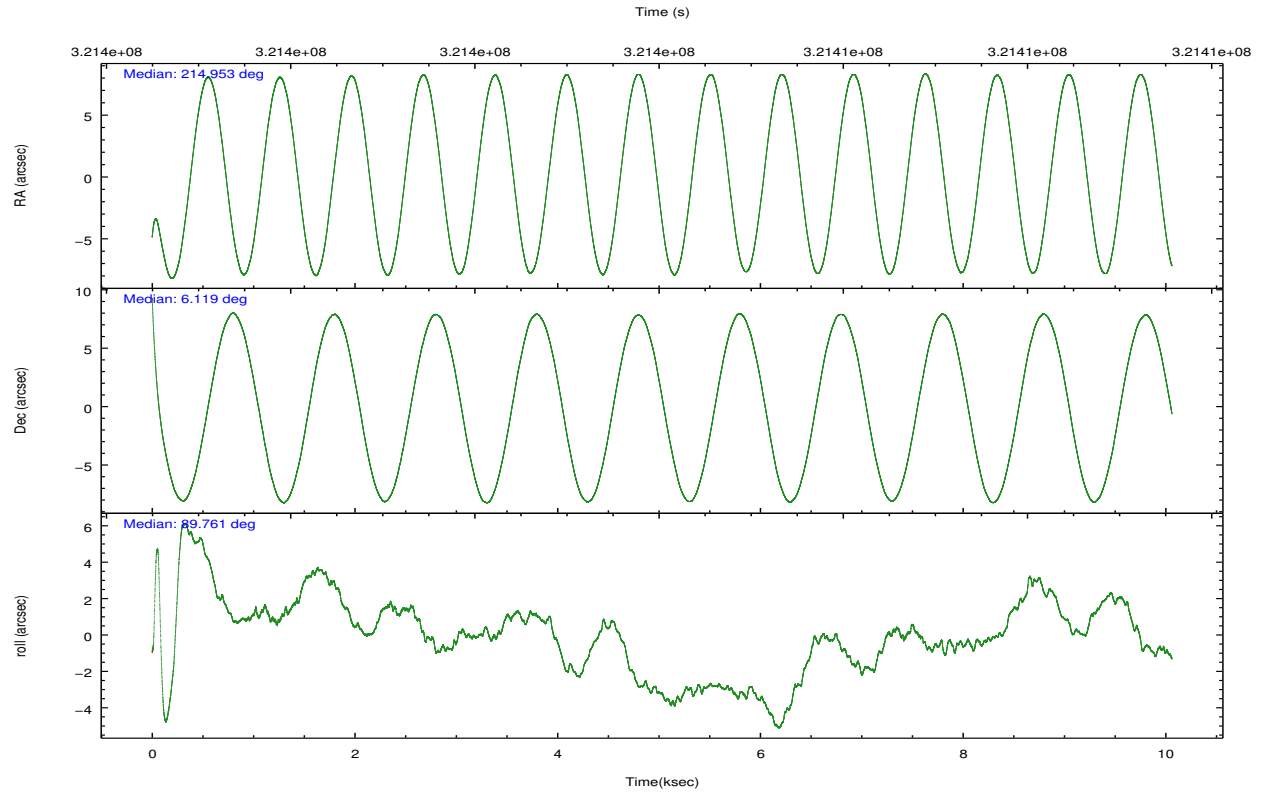
	ccd 2	ccd 3	ccd 6	ccd 7	ccd 8
grade 0 events	5000	4835	4600	5251	9775
	5%	5%	4%	3%	7%
grade 1 events	53	50	59	148	94
	0%	0%	0%	0%	0%
grade 2 events	2396	2249	2646	11596	6495
	2%	2%	2%	8%	5%
grade 3 events	1034	1113	1058	4891	2910
	1%	1%	1%	3%	2%
grade 4 events	1044	1118	1136	4881	2805
	1%	1%	1%	3%	2%
grade 5 events	3726	4458	4516	12537	6152
	4%	4%	4%	9%	4%
grade 6 events	1845	2035	2334	30081	7486
	2%	2%	2%	22%	6%
grade 7 events	76281	76559	83583	65870	88808
	83%	82%	83%	48%	71%

2.2 Compared Parameters

Parameter	Planned	Actual	Parameter	Planned	Actual
Instrument	ACIS	ACIS	Obspar format version number	7	7
Detector	ACIS-23678	ACIS-23678	Obspar file type	PREDICTED	ACTUAL
Grating	NONE	NONE	Obspar update status	NONE	UPDATED
Data mode	FAINT	FAINT	CCD I0 on	N	N
Observation mode	POINTING	POINTING	CCD I1 on	N	N
[deg] Pointing RA	214.967264	214.9532520421645	CCD I2 on	O1	Y
[deg] Pointing Dec	6.095589	6.119144960584402	CCD I3 on	Y	Y
[deg] Pointing Roll	89.611287	89.76941621345816	CCD S0 on	N	N
[mm] SIM focus pos	-0.684267	-0.6828225247311905	CCD S1 on	N	N
[mm] SIM defocus	0	0.001444936568705701	CCD S2 on	Y	Y
[mm] SIM translation stage pos	-190.132523	-190.1425803651734	CCD S3 on	Y	Y
[mm] SIM translation stage offset	0	0.01005778216563158	CCD S4 on	Y	Y
[s] Observation start time (MET)	321399169.184000	321398159.94992	CCD S5 on	N	N
Observation start date	2008-03-08T21:31:44	2008-03-08T21:15:59	Number of optional ACIS chips dropped	0	0
[s] Observation end time (MET)	321409069.184000	321409422.65047	On-chip summing requested	N	N
Observation end date	2008-03-09T00:16:44	2008-03-09T00:23:42	Subarray requested	NONE	NONE
Read mode	TIMED	TIMED	Alternating exposures requested	N	N
			[s] Primary exposure time	0.000000	3.1

2.3 Aspect



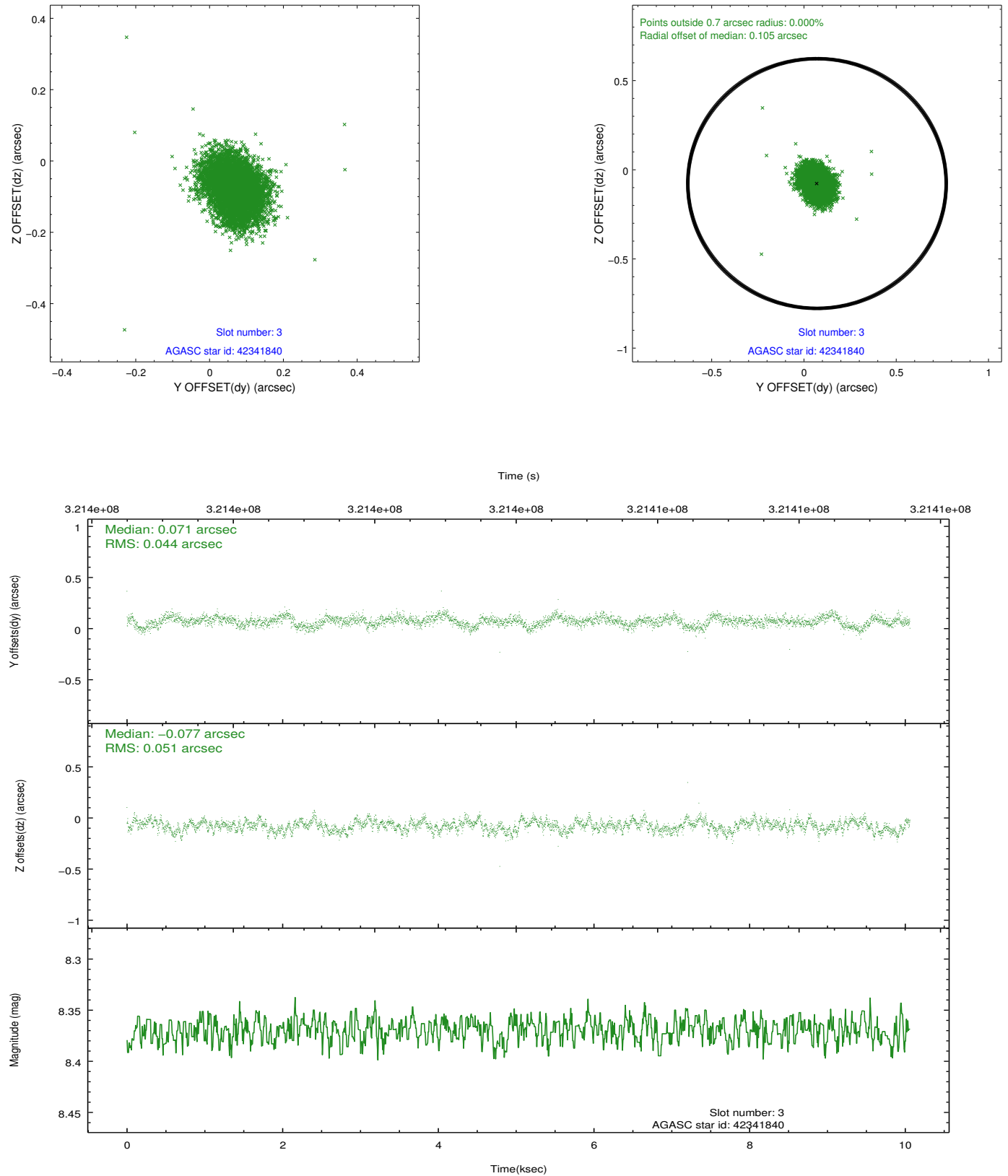


Slot Statistics

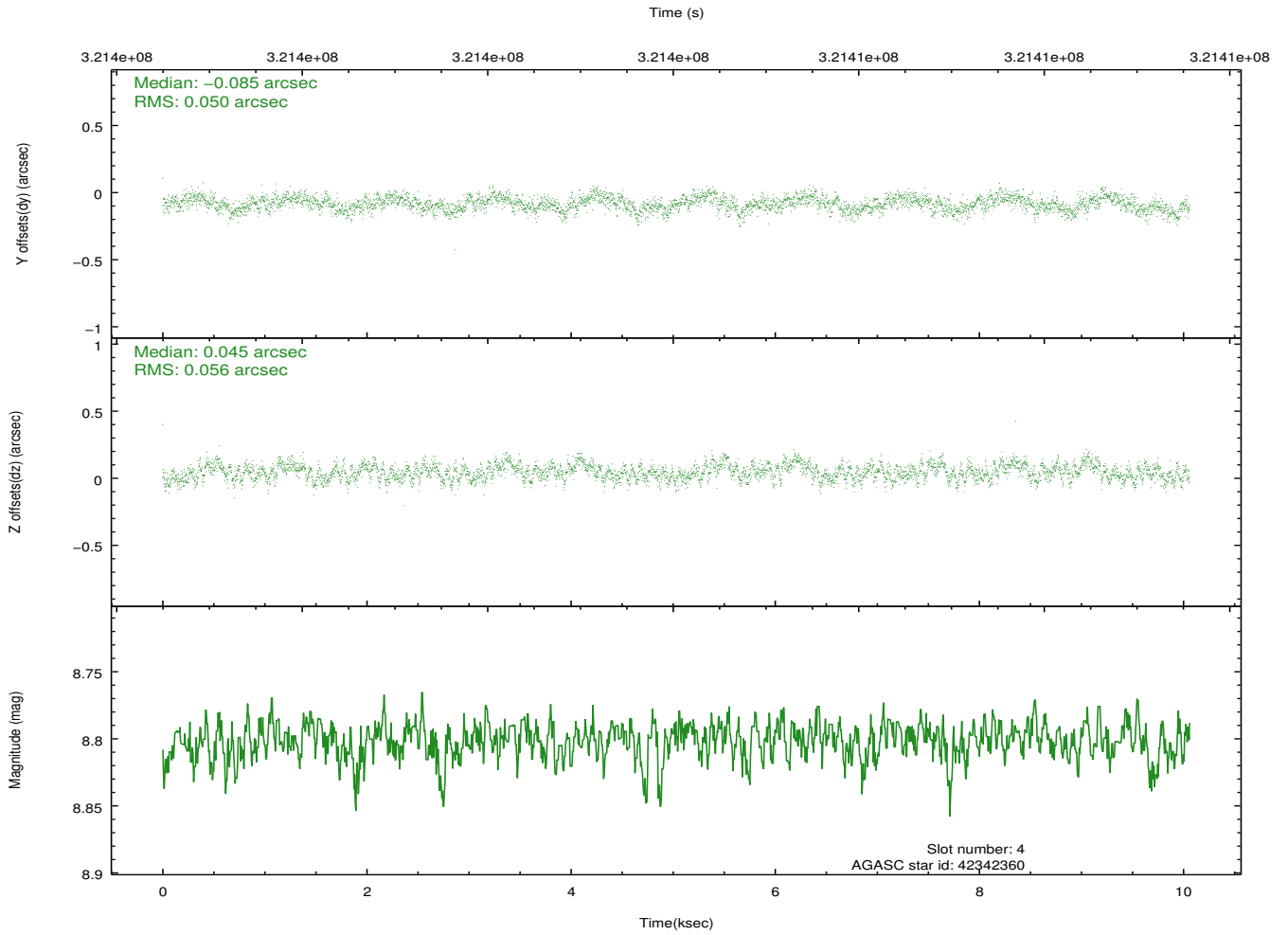
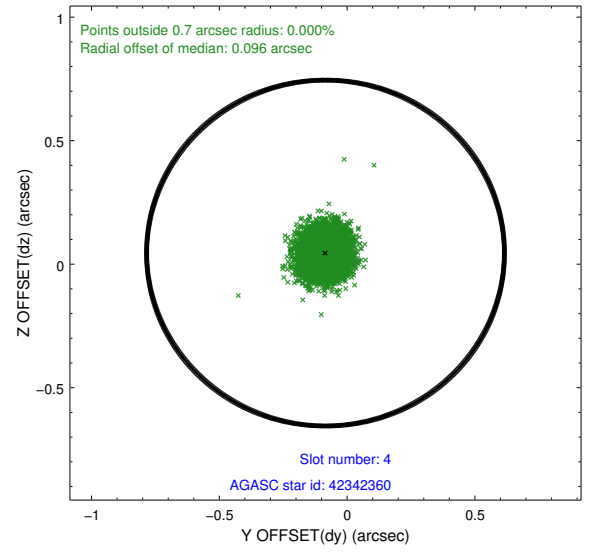
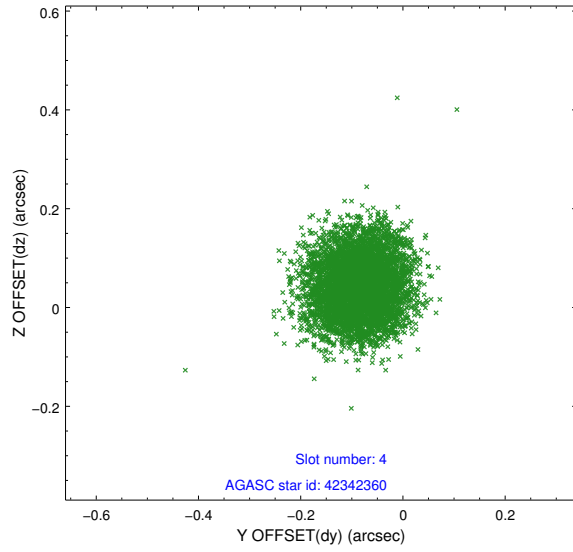
slot	status	id	mag	n_pts	med_dy	med_dz	dr1	dr2	ra	dec	mean_y	mean_z
0	FID	ACIS-S-2	7.09	2455	-0.067	-0.024	0.009	0.013	0.000000	0.000000	-766.71	-1736.40
1	FID	ACIS-S-4	7.19	2455	0.184	0.039	0.006	0.011	0.000000	0.000000	2146.54	171.65
2	FID	ACIS-S-5	7.22	2455	-0.149	-0.006	0.007	0.010	0.000000	0.000000	-1818.99	165.81
3	GUIDE	42341840	8.37	4908	0.071	-0.077	0.071	0.112	214.867062	5.854194	-871.07	352.85
4	GUIDE	42342360	8.80	4904	-0.085	0.045	0.082	0.126	214.659937	6.232653	486.17	1103.47
5	GUIDE	42343696	7.78	4909	0.031	-0.183	0.084	0.134	214.907250	5.896291	-718.65	210.53
6	GUIDE	42474848	7.54	4909	-0.332	0.052	0.053	0.087	215.355097	6.442439	1258.42	-1378.26
7	GUIDE	42475912	10.09	4905	0.318	0.165	0.157	0.244	215.287046	5.672212	-1515.11	-1155.97

2.4 Star Slots

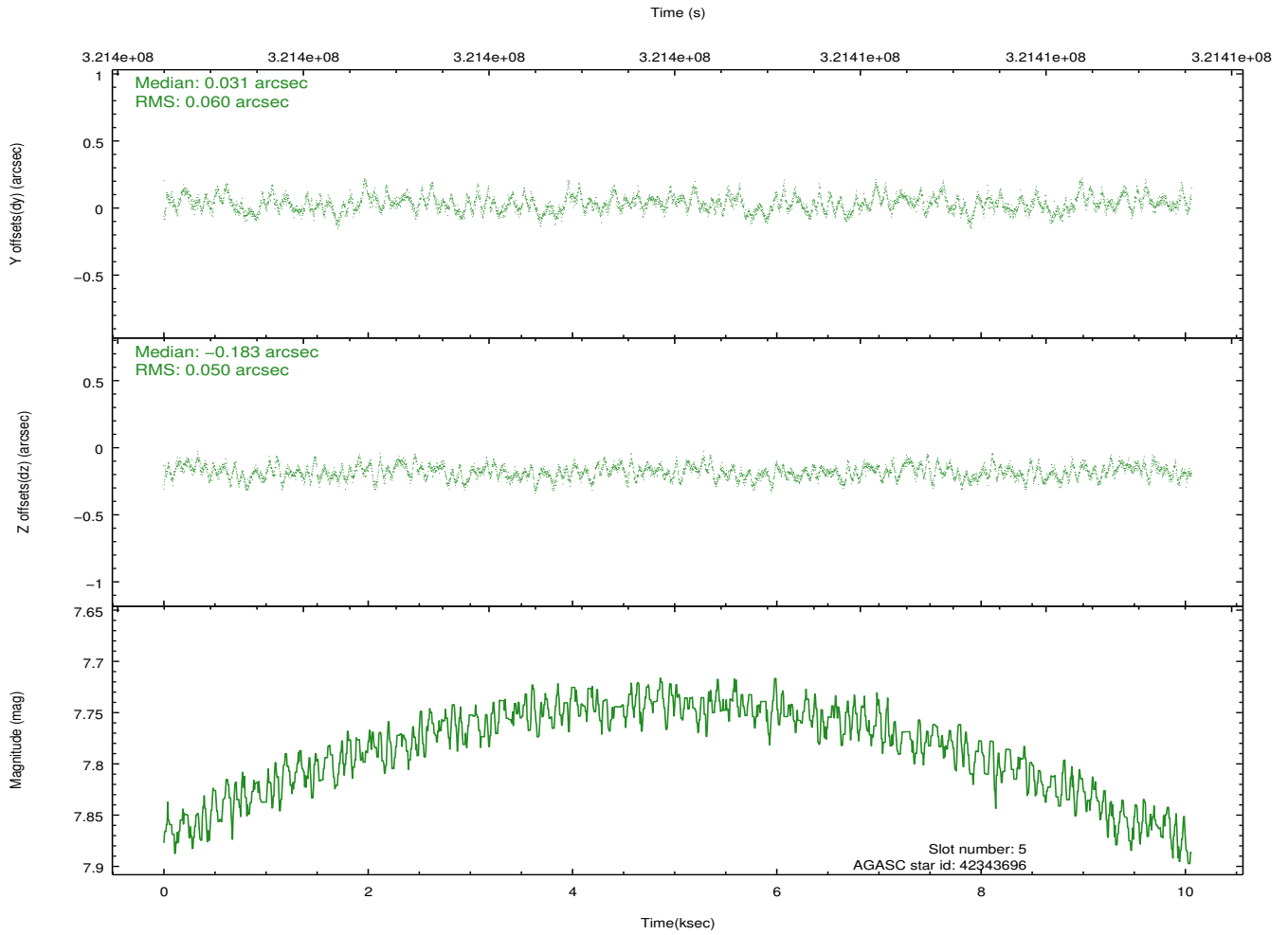
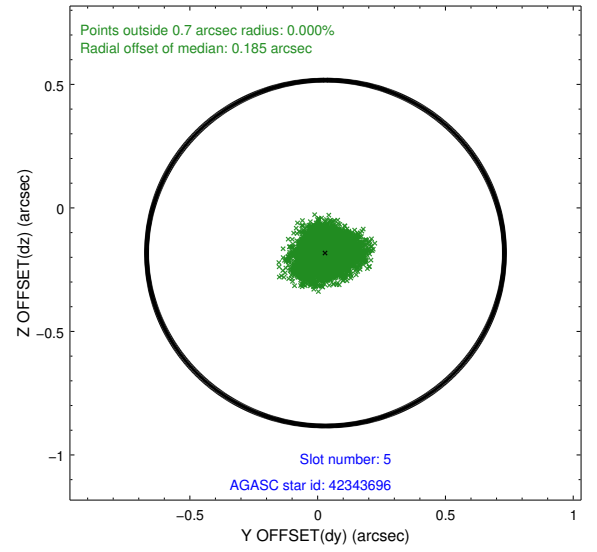
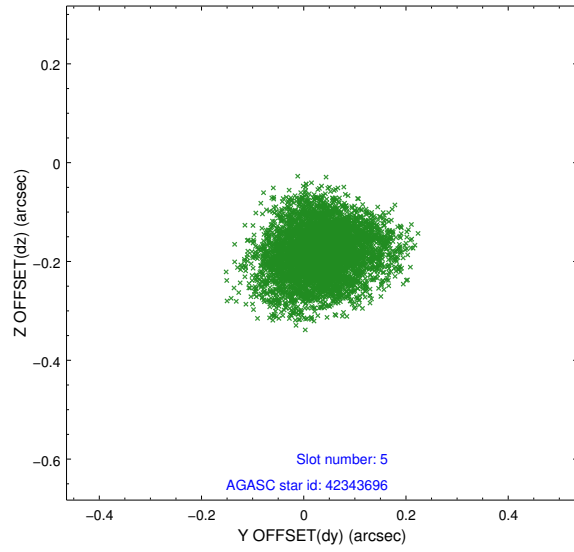
2.4.1 Slot 3



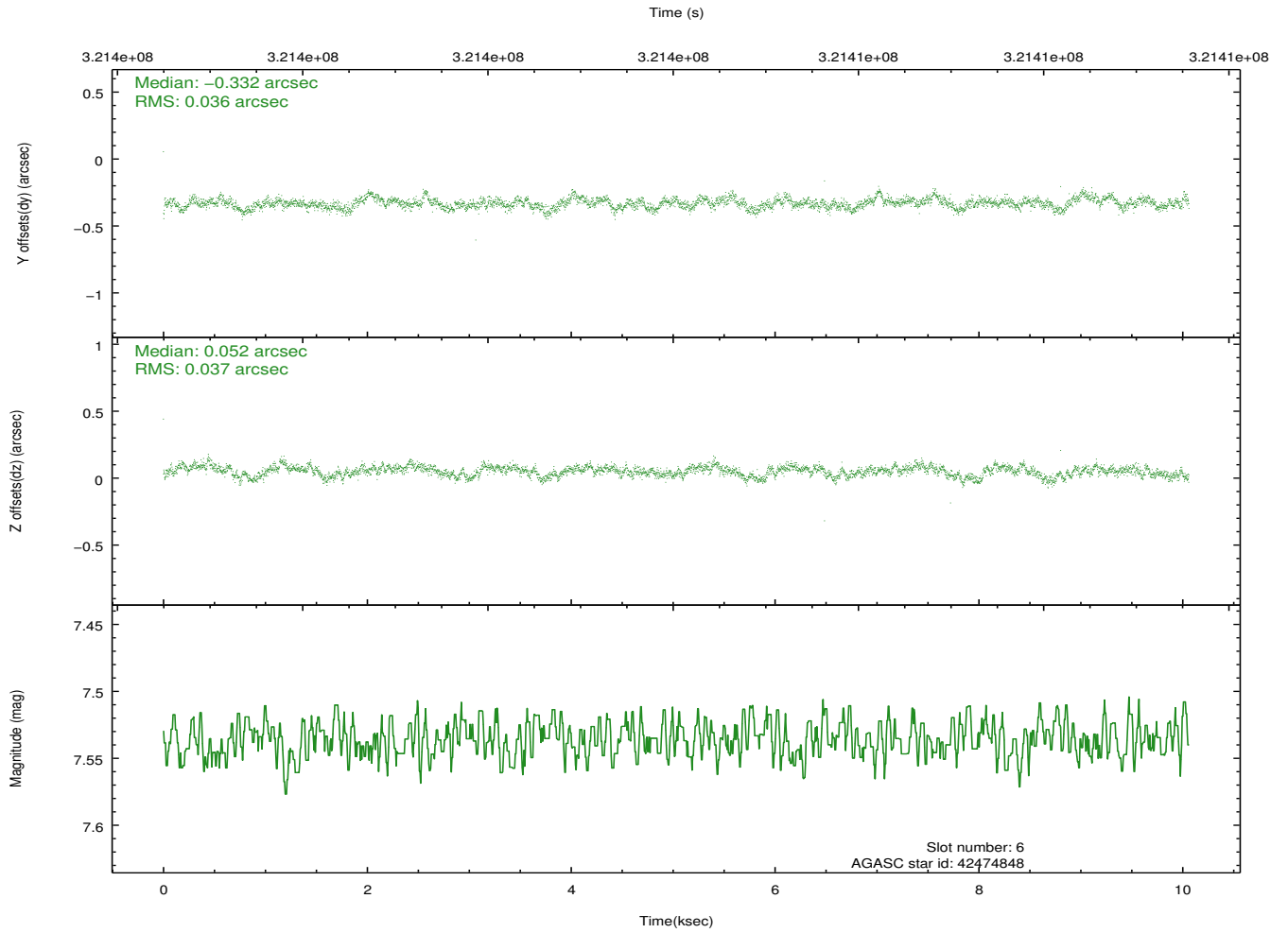
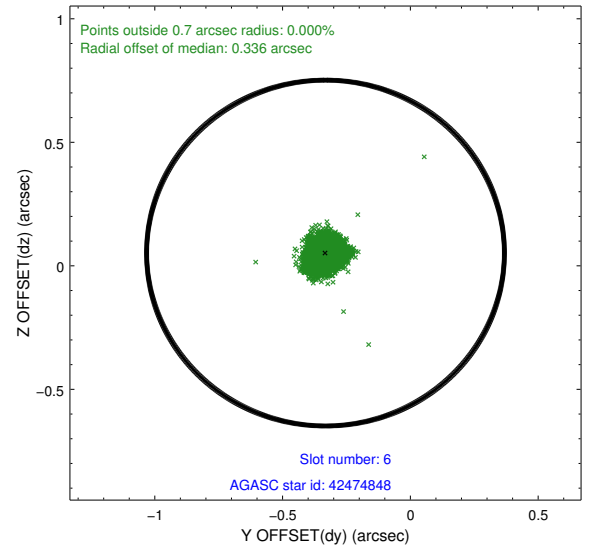
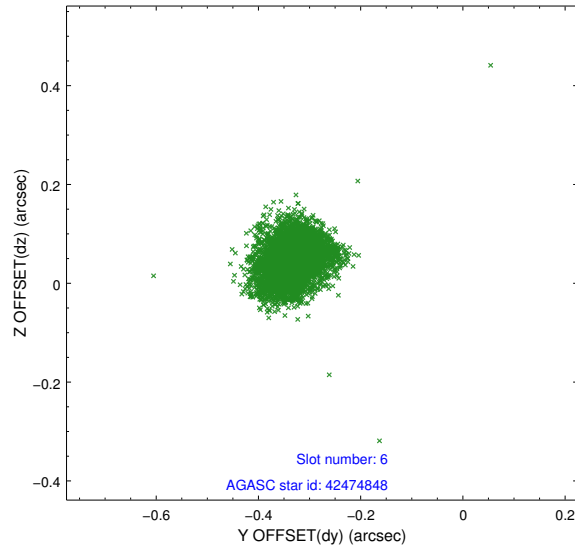
2.4.2 Slot 4



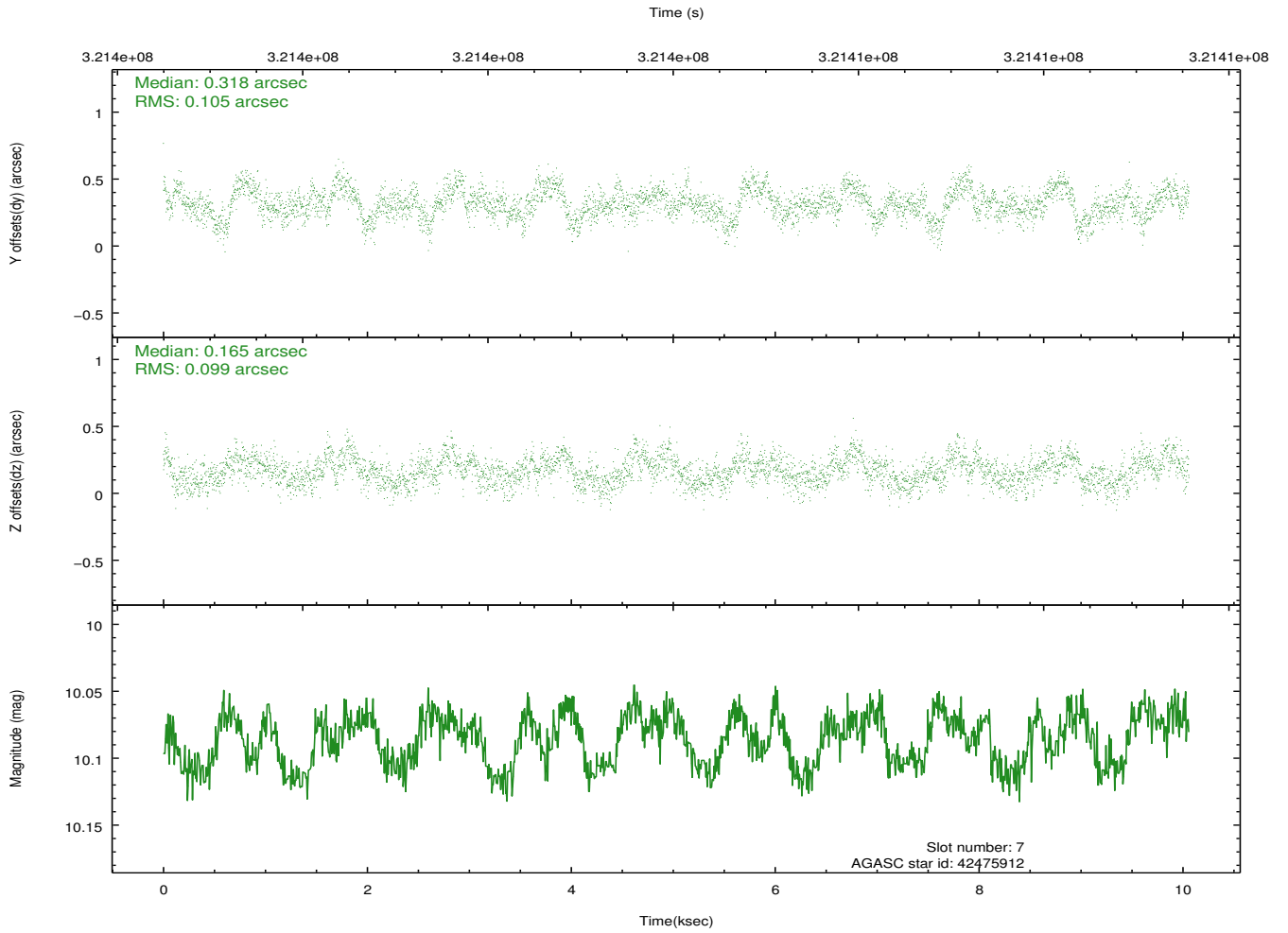
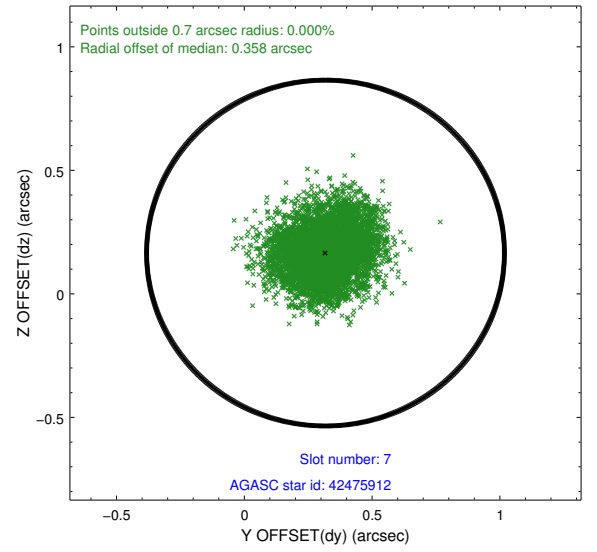
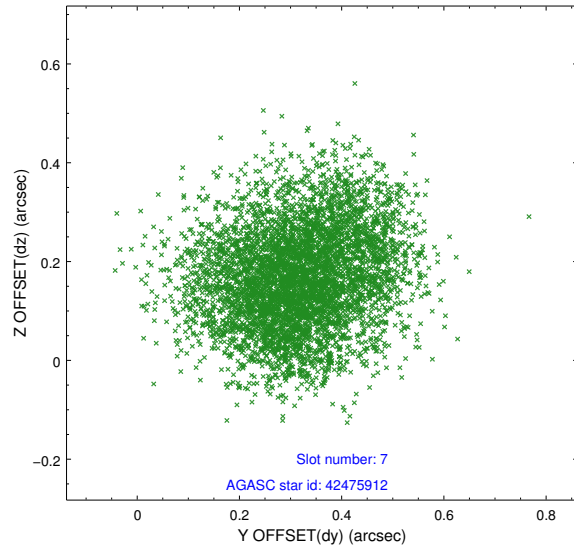
2.4.3 Slot 5



2.4.4 Slot 6

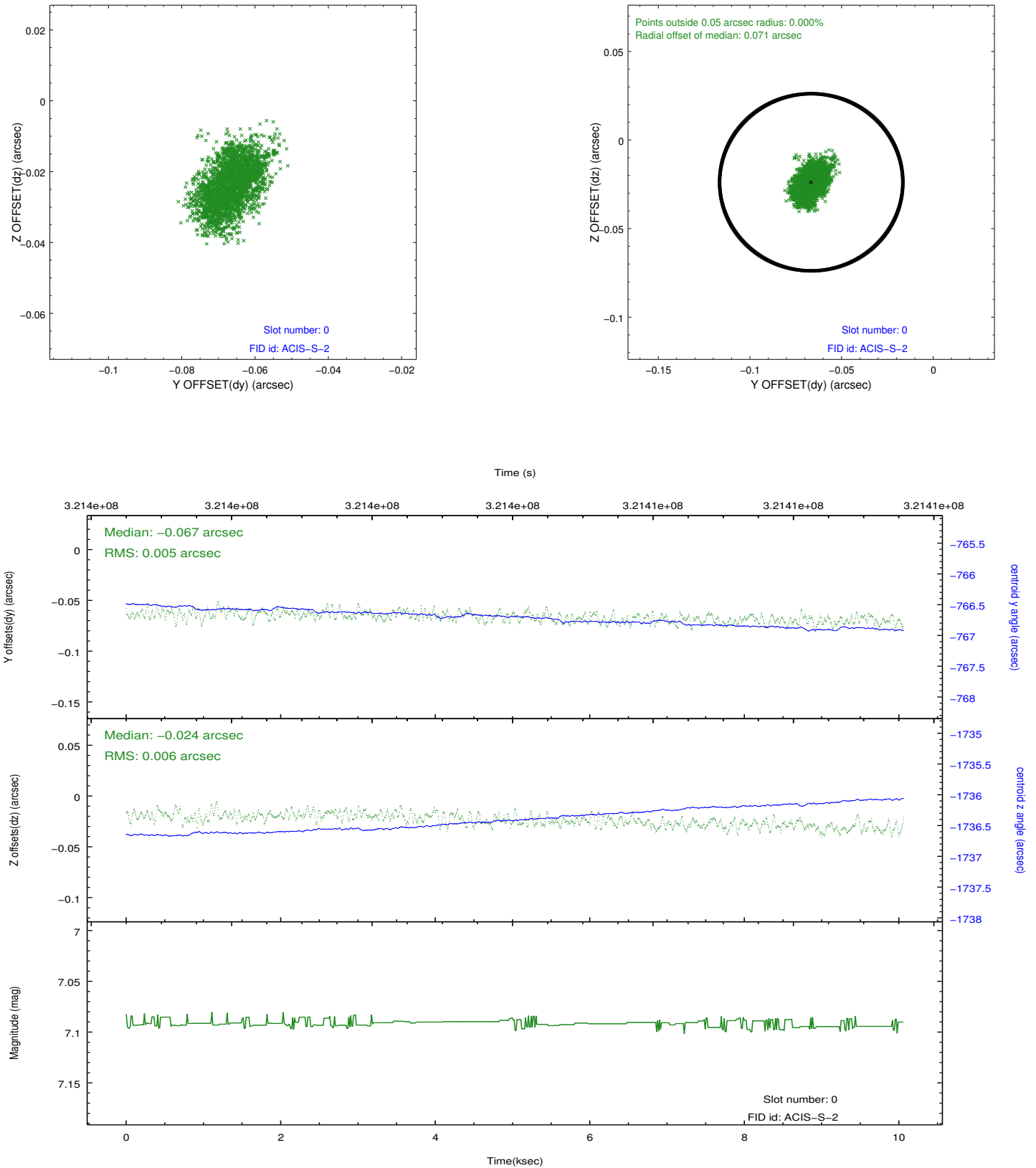


2.4.5 Slot 7

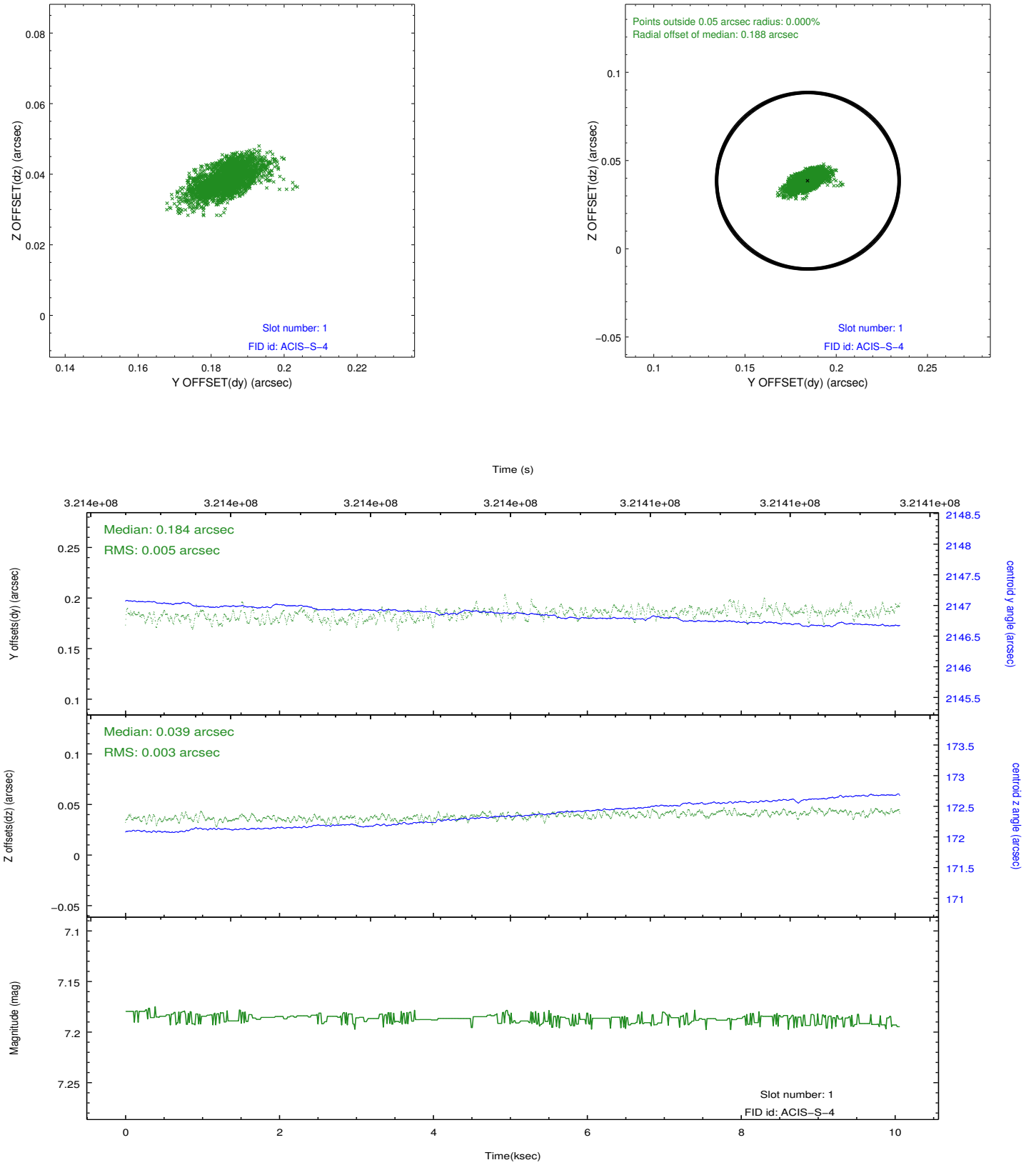


2.5 FID Slots

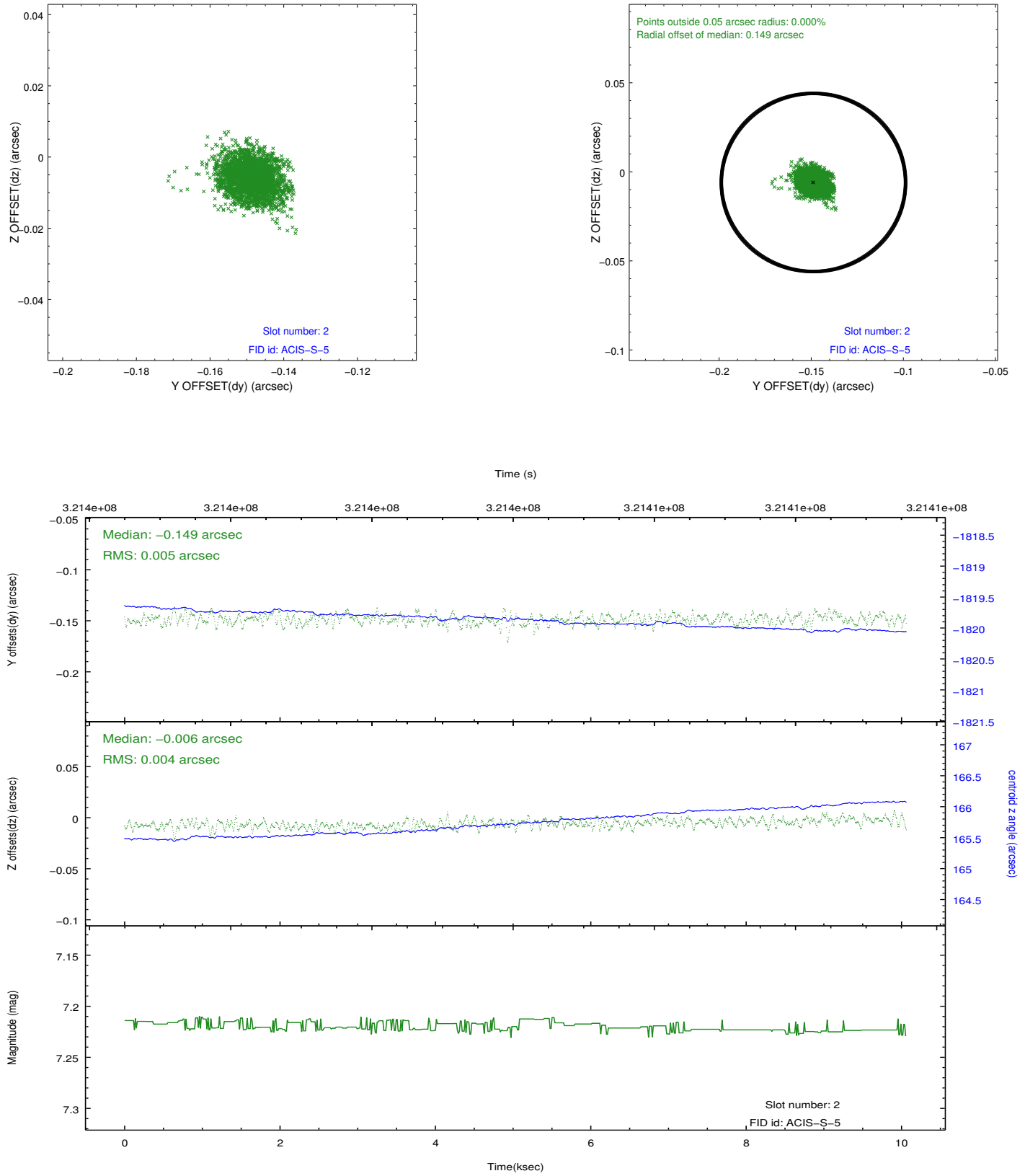
2.5.1 Slot 0



2.5.2 Slot 1



2.5.3 Slot 2



A Summary

A.1 Status

V&V Scientist	Beth Sundheim
V&V Date (YYYY-MM-DD)	2012.05.14
V&V Edition	1
V&V Disposition and Status	OK
V&V Charge Time	10.0533

A.2 Comments