

V&V Reference Report

L2 ASCDS Version : 8.4.4

Observation 7826 - L2 Version 2
Chandra X-Ray Center

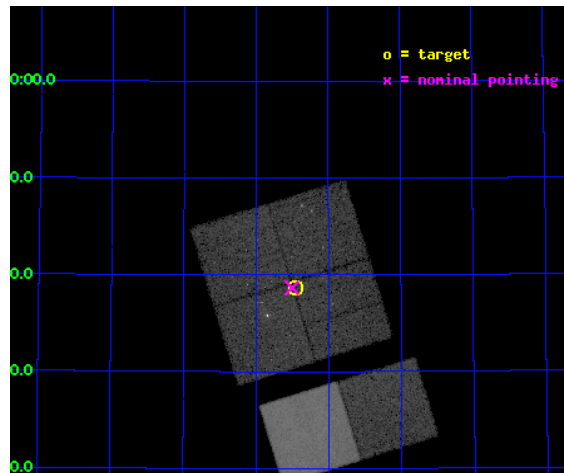
L2 Processing Date : Apr 25 2012

Contents

1	Front	2
2	OBI	3
2.1	OBI	3
2.1.1	Images	3
2.1.2	Bias	3
2.1.3	Parameters	4
2.1.4	Events	4
2.2	Compared Parameters	5
2.3	Aspect	6
2.4	Star Slots	9
2.4.1	Slot 3	9
2.4.2	Slot 4	10
2.4.3	Slot 5	11
2.4.4	Slot 6	12
2.4.5	Slot 7	13
2.5	FID Slots	14
2.5.1	Slot 0	14
2.5.2	Slot 1	15
2.5.3	Slot 2	16
A	Summary	17
A.1	Status	17
A.2	Comments	17

1 Front

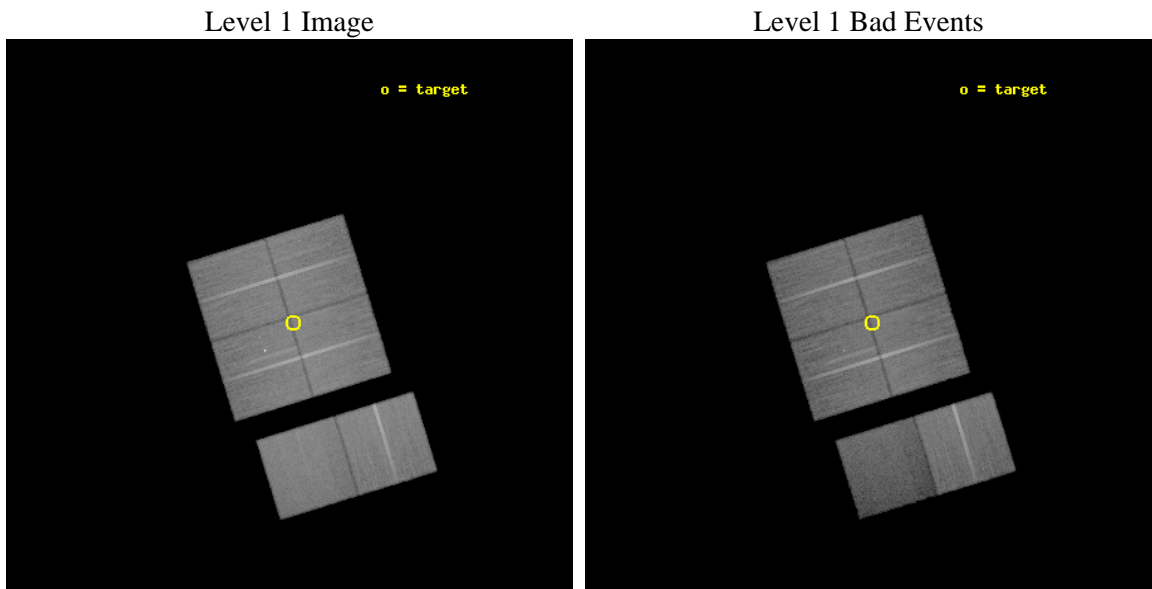
seq_num	701490	Sequence number
obs_id	7826	Observation id
title	What Powers the z~2 Spitzer ULIRGs in the First Look Survey	Propos
observer	Dr. Lin Yan	Principal investigator
object	FLS3	Source name
dtcycle	0	
cycle	P	events from which exps? Prim/Second/Both
ra_targ	258.862917	Observer's specified target RA [deg]
dec_targ	59.645	Observer's specified target Dec [deg]
ra_nom	258.8761195461	Nominal RA [deg]
dec_nom	59.644728995224	Nominal Dec [deg]
roll_nom	162.8652849433	Nominal Roll [deg]
revision	2	Processing version of data
ontime	30041.127340019	Sum of GTIs [s]
livetime	29660.728497044	Livetime [s]
ontime0	30041.004220009	Sum of GTIs [s]
ontime1	30041.045260012	Sum of GTIs [s]
ontime2	30041.086300015	Sum of GTIs [s]
ontime3	30041.127340019	Sum of GTIs [s]
ontime6	30037.968449712	Sum of GTIs [s]
ontime7	30041.168380022	Sum of GTIs [s]
l2events	191618	Number of level 2 events



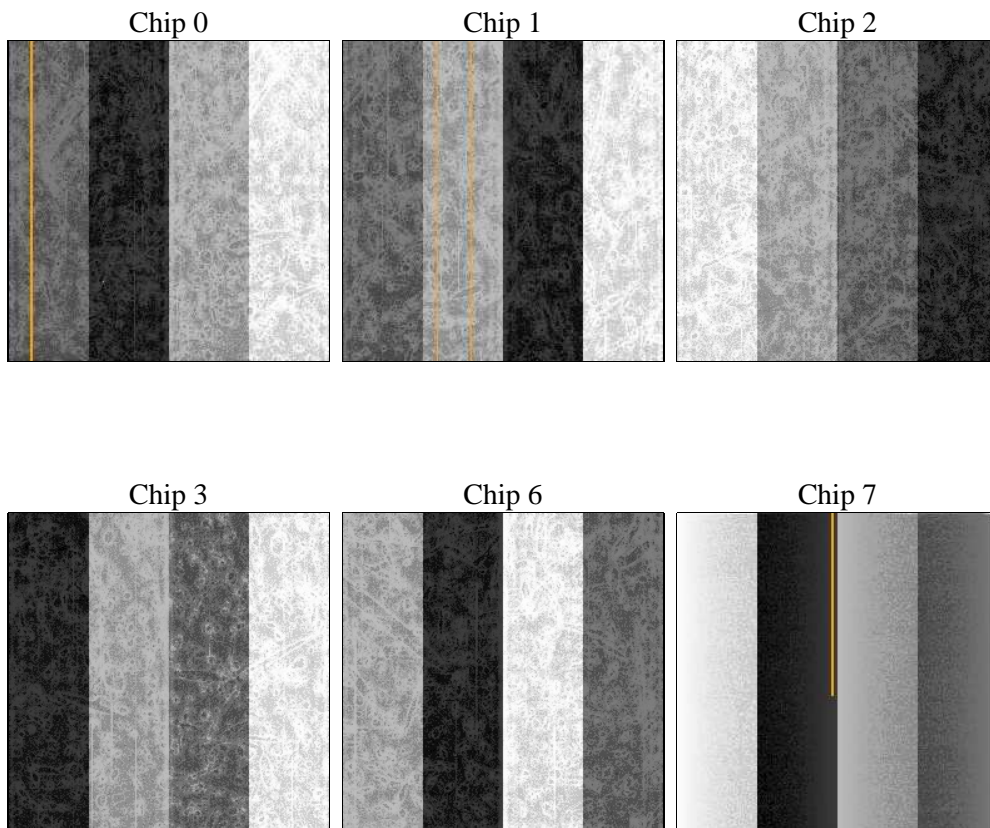
2 OBI

2.1 OBI

2.1.1 Images



2.1.2 Bias



2.1.3 Parameters

obi_num	0	Obi number	sched_exp_time	30000.000000	[s] Scheduled observation exposure time
ascdsver	8.4.4	Processing system revision	ontime	30041.127340019	Sum of GTIs [s]
caldsver	4.4.9	 	ontime0	30041.004220009	Sum of GTIs [s]
date	2012-04-25T09:25:05	Date and time of file creation	ontime1	30041.045260012	Sum of GTIs [s]
revision	2	Processing version of data	ontime2	30041.086300015	Sum of GTIs [s]
			ontime3	30041.127340019	Sum of GTIs [s]
			ontime6	30037.968449712	Sum of GTIs [s]
			ontime7	30041.168380022	Sum of GTIs [s]
			l1events	1316339	Number of level 1 events

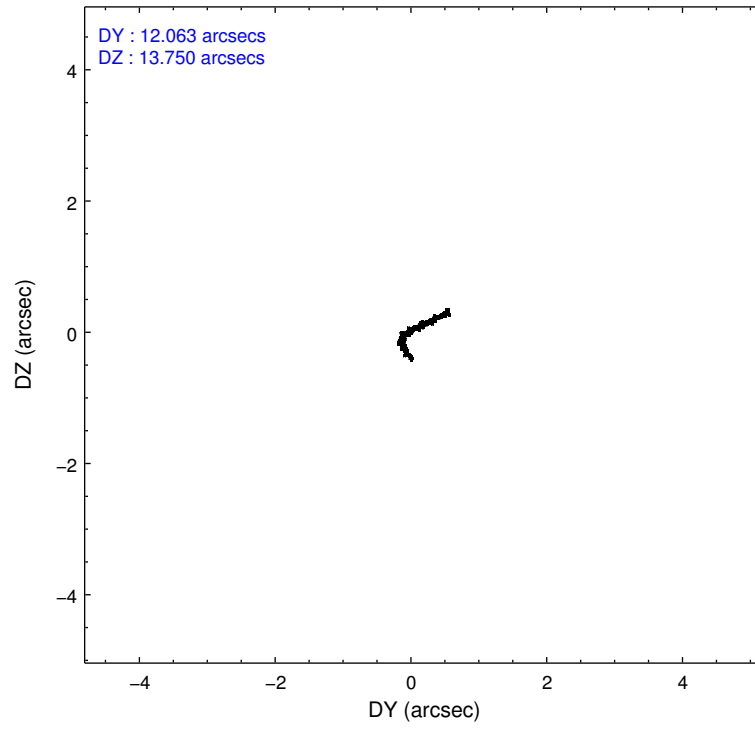
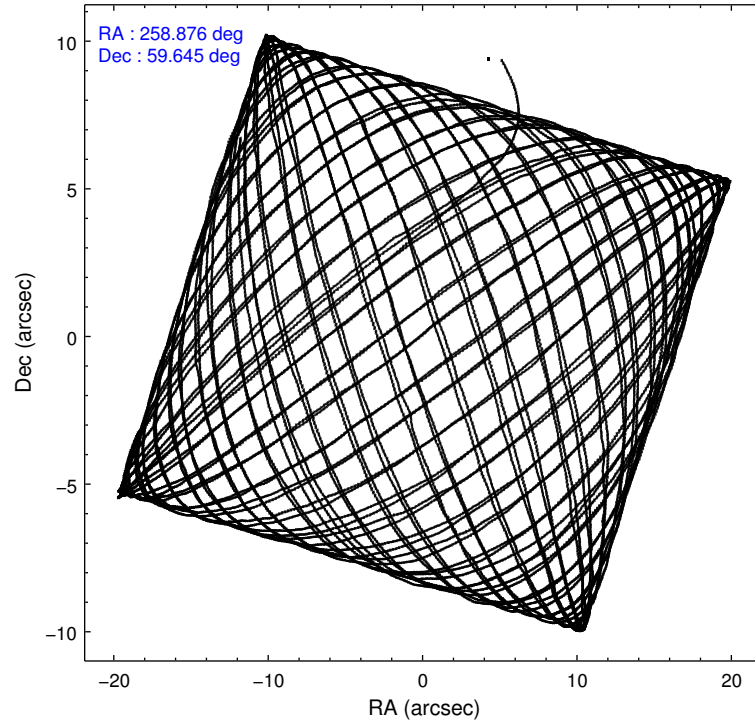
2.1.4 Events

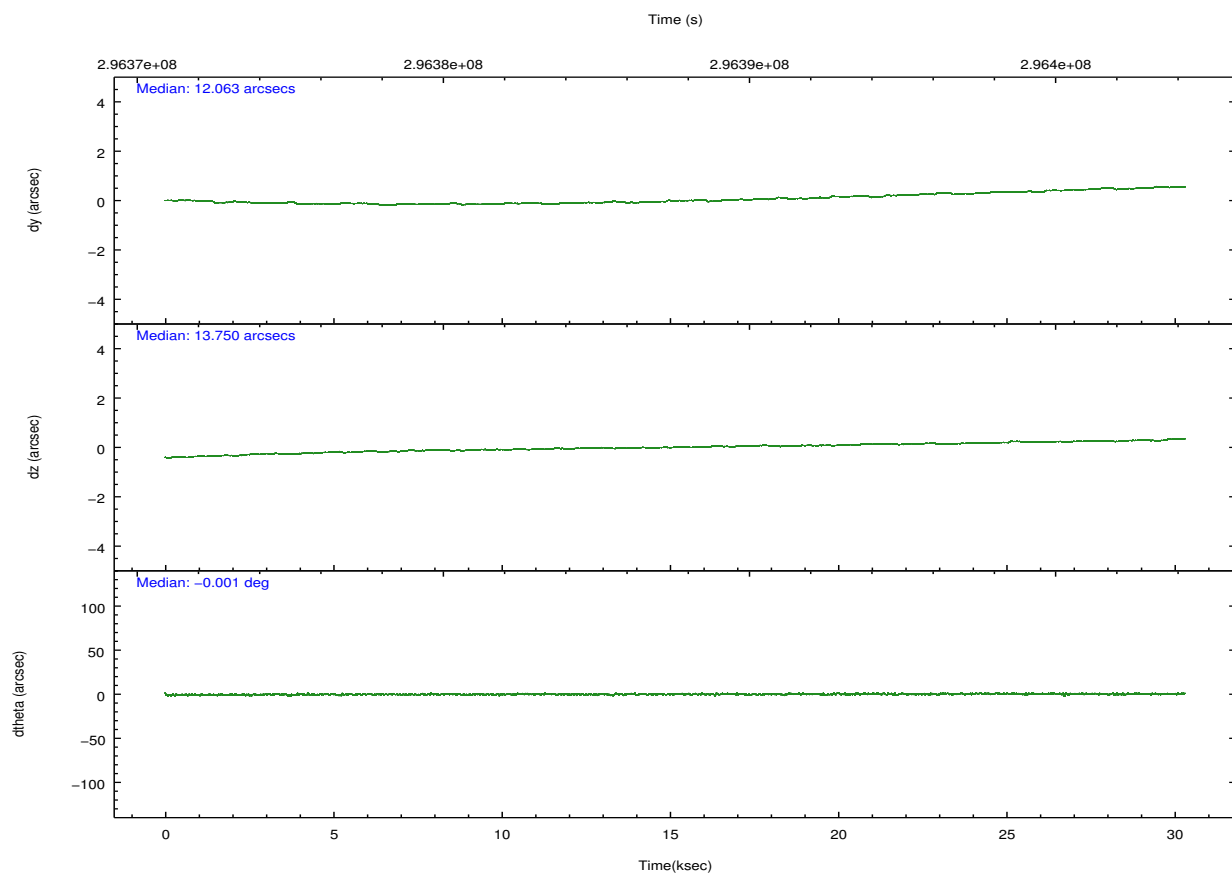
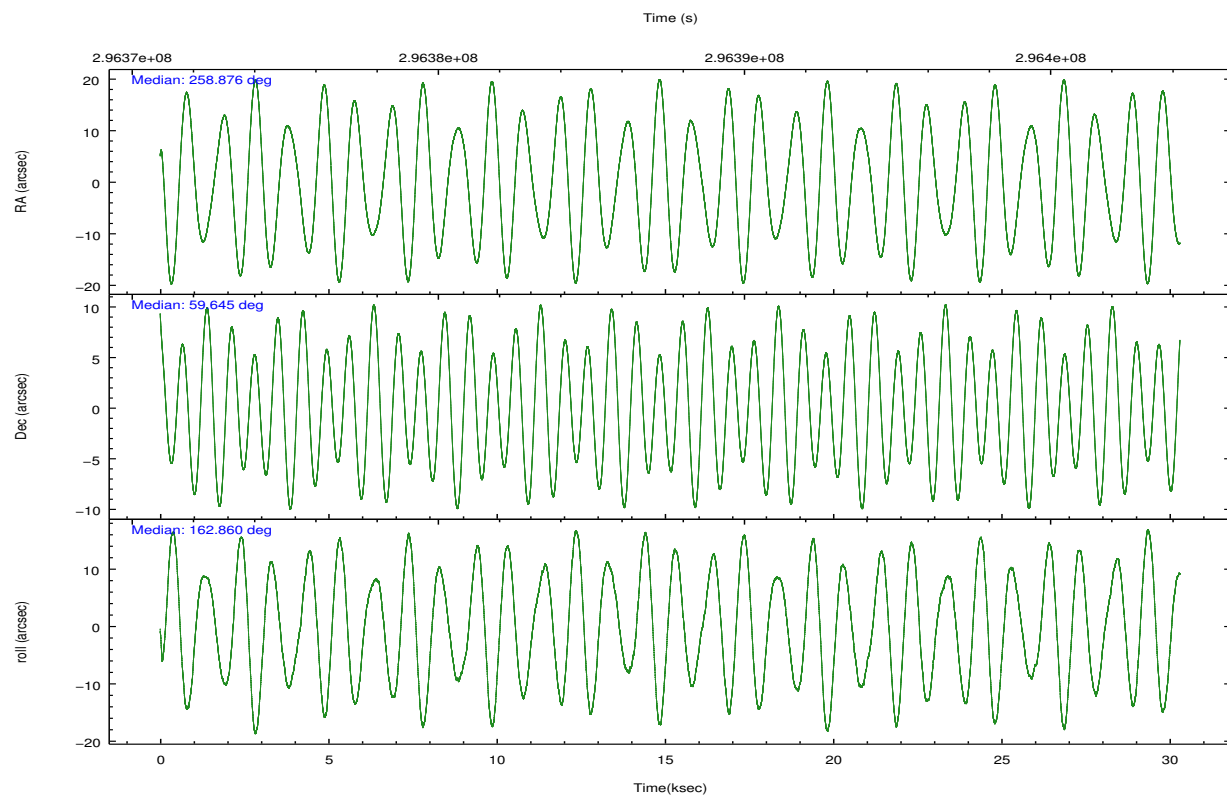
	ccd 0	ccd 1	ccd 2	ccd 3	ccd 6	ccd 7		ccd 0	ccd 1	ccd 2	ccd 3	ccd 6	ccd 7
level 1 events	212862	207156	236598	220516	231772	207435	grade 0 events	7836	7476	7673	11666	7974	10598
rejected events	191401	185108	215879	195083	209642	105237		3%	3%	3%	5%	3%	5%
rejected %	89%	89%	91%	88%	90%	50%	grade 1 events	126	84	125	364	111	293
								0%	0%	0%	0%	0%	0%
							grade 2 events	5027	4925	4937	4858	4958	21287
								2%	2%	2%	2%	2%	10%
							grade 3 events	2492	2620	2241	2445	2333	9632
								1%	1%	0%	1%	1%	4%
							grade 4 events	2261	2582	2261	2496	2382	9645
								1%	1%	0%	1%	1%	4%
							grade 5 events	6170	6943	5973	7372	7699	22210
								2%	3%	2%	3%	3%	10%
							grade 6 events	3852	4450	3614	3975	4489	51059
								1%	2%	1%	1%	1%	24%
							grade 7 events	185098	178076	209774	187340	201826	82711
								86%	85%	88%	84%	87%	39%

2.2 Compared Parameters

Parameter	Planned	Actual	Parameter	Planned	Actual
Instrument	ACIS	ACIS	Obspar format version number	7	7
Detector	ACIS-012367	ACIS-012367	Obspar file type	PREDICTED	ACTUAL
Grating	NONE	NONE	Obspar update status	NONE	UPDATED
Data mode	VFAINT	VFAINT	CCD I0 on	Y	Y
Observation mode	POINTING	POINTING	CCD I1 on	Y	Y
[deg] Pointing RA	258.929131	258.8761195460967	CCD I2 on	Y	Y
[deg] Pointing Dec	59.650953	59.64472899522367	CCD I3 on	Y	Y
[deg] Pointing Roll	162.610853	162.8652849432978	CCD S0 on	N	N
[mm] SIM focus pos	-0.782348	-0.7809083437167272	CCD S1 on	N	N
[mm] SIM defocus	0	0.001439871863259334	CCD S2 on	O1	Y
[mm] SIM translation stage pos	-233.992463	-233.9897249090783	CCD S3 on	O2	Y
[mm] SIM translation stage offset	0.4	0.3972719061486032	CCD S4 on	N	N
[s] Observation start time (MET)	296372704.184000	296371636.25625	CCD S5 on	N	N
Observation start date	2007-05-24T05:43:59	2007-05-24T05:27:16	Number of optional ACIS chips dropped	0	0
[s] Observation end time (MET)	296402704.184000	296404214.8578	On-chip summing requested	N	N
Observation end date	2007-05-24T14:03:59	2007-05-24T14:30:14	Subarray requested	NONE	NONE
Read mode	TIMED	TIMED	Alternating exposures requested	N	N
			[s] Primary exposure time	0.000000	3.2

2.3 Aspect



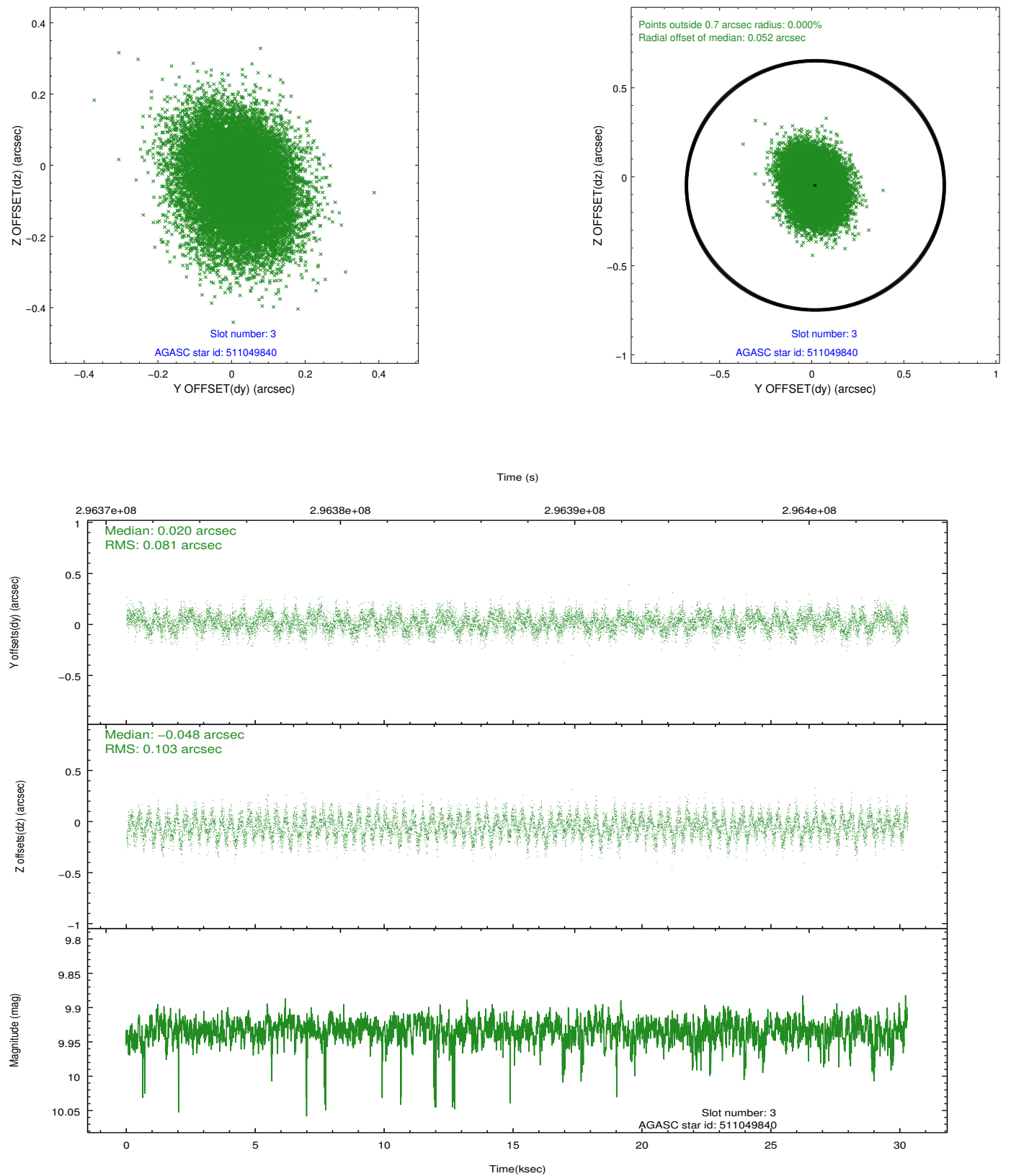


Slot Statistics

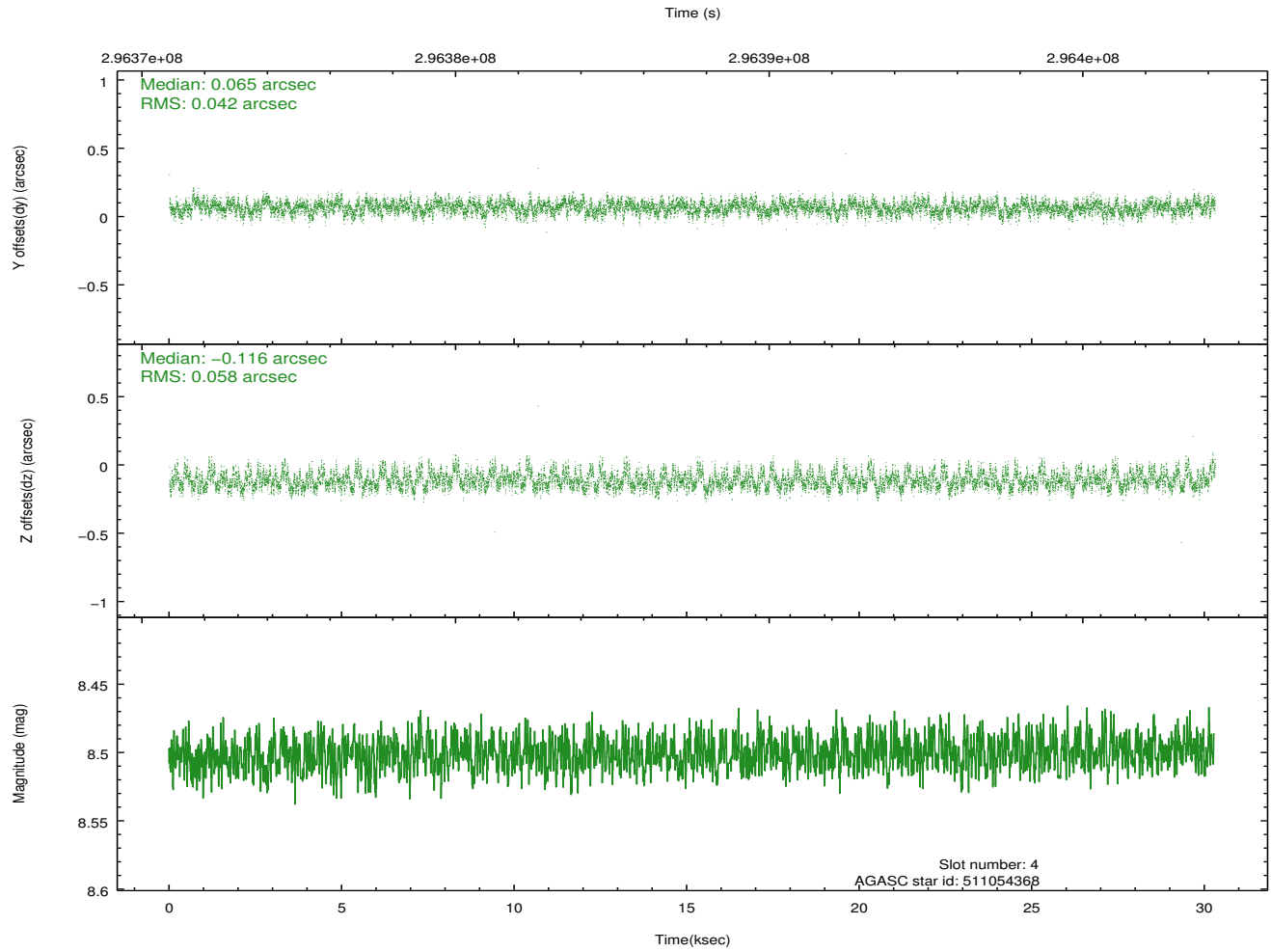
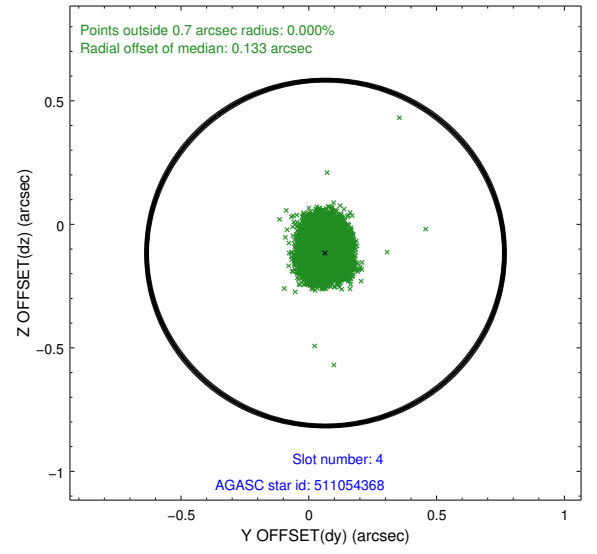
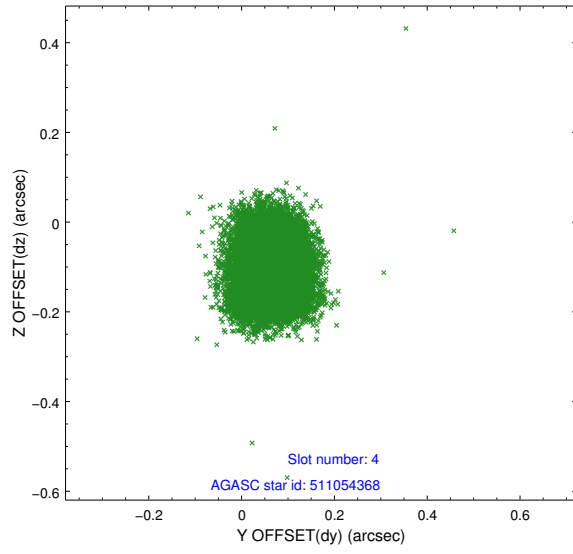
slot	status	id	mag	n_pts	med_dy	med_dz	dr1	dr2	ra	dec	mean_y	mean_z
0	FID	ACIS-I-1	7.23	7391	-0.017	-0.018	0.017	0.031	0.000000	0.000000	927.38	-829.08
1	FID	ACIS-I-4	7.16	7390	0.174	0.044	0.014	0.022	0.000000	0.000000	2147.70	1070.69
2	FID	ACIS-I-5	7.22	7392	-0.253	0.044	0.015	0.032	0.000000	0.000000	-1820.75	1068.72
3	GUIDE	511049840	9.93	14769	0.020	-0.048	0.141	0.225	258.982478	59.506756	-247.82	466.42
4	GUIDE	511054368	8.50	14774	0.065	-0.116	0.076	0.123	258.802827	59.200920	-261.60	1615.51
5	GUIDE	511057352	10.16	14755	-0.105	-0.137	0.175	0.271	259.645900	59.515420	-1392.69	67.79
6	GUIDE	550243848	10.15	14751	0.010	0.321	0.213	0.344	259.484289	60.174033	-384.15	-2097.52
7	GUIDE	550244616	9.88	14761	0.024	-0.007	0.162	0.268	257.921633	60.083964	2196.57	-959.86

2.4 Star Slots

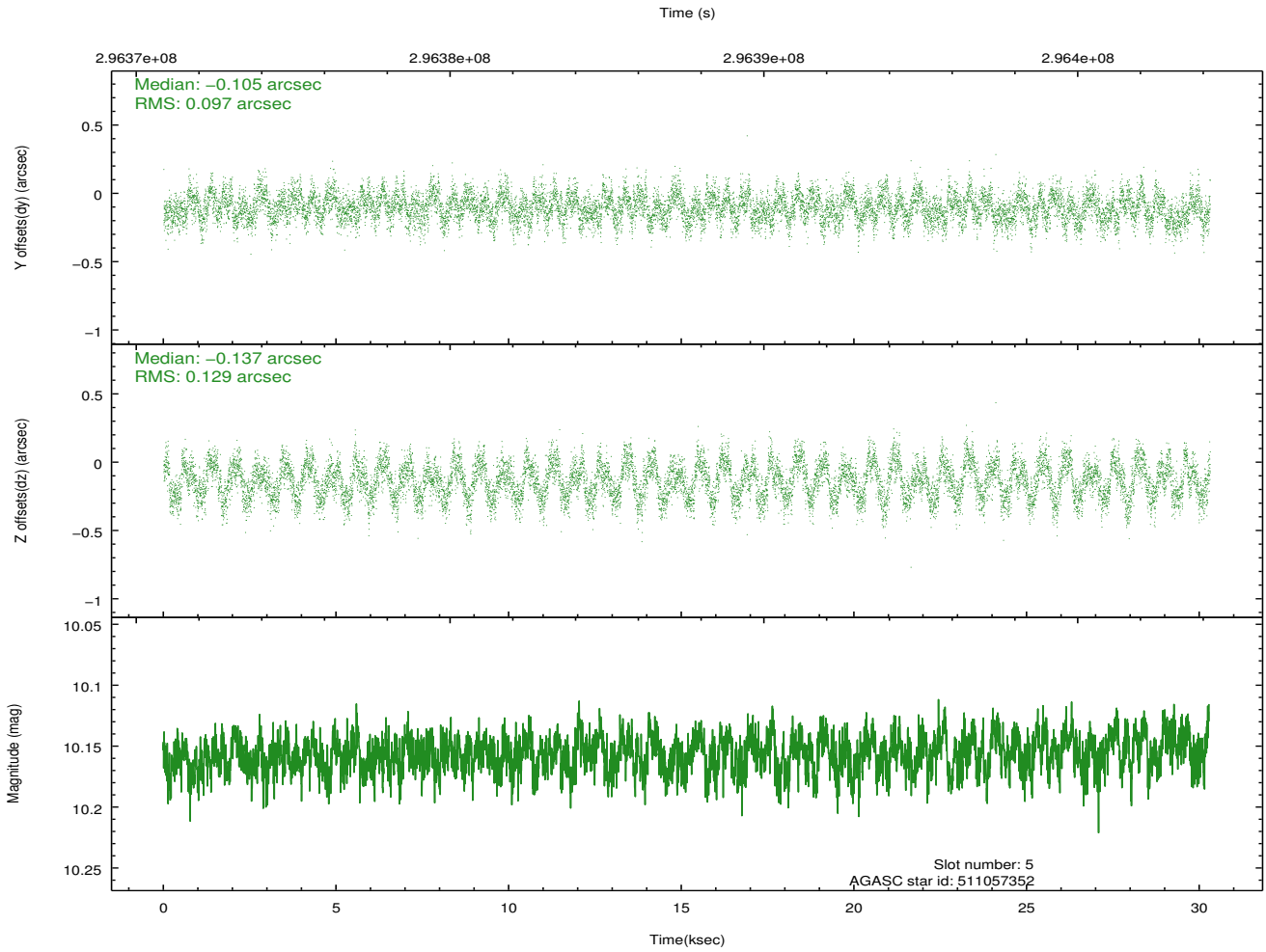
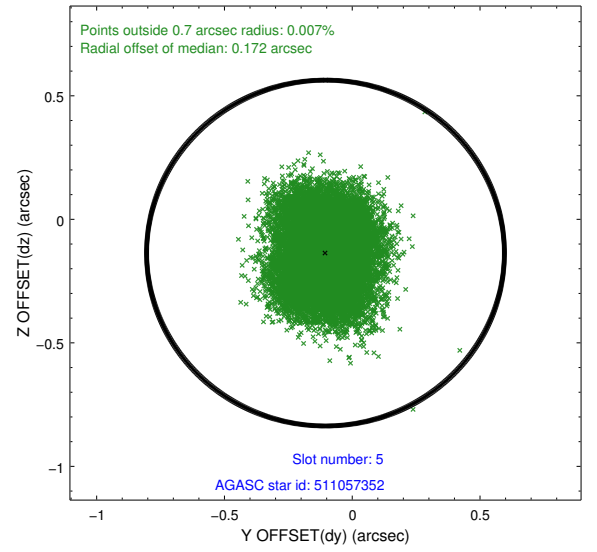
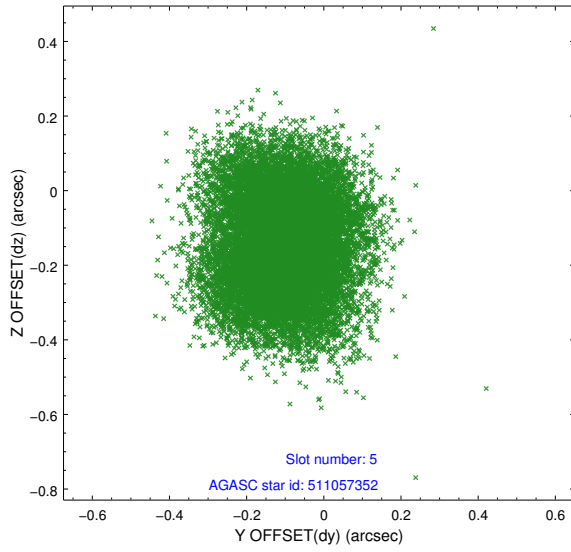
2.4.1 Slot 3



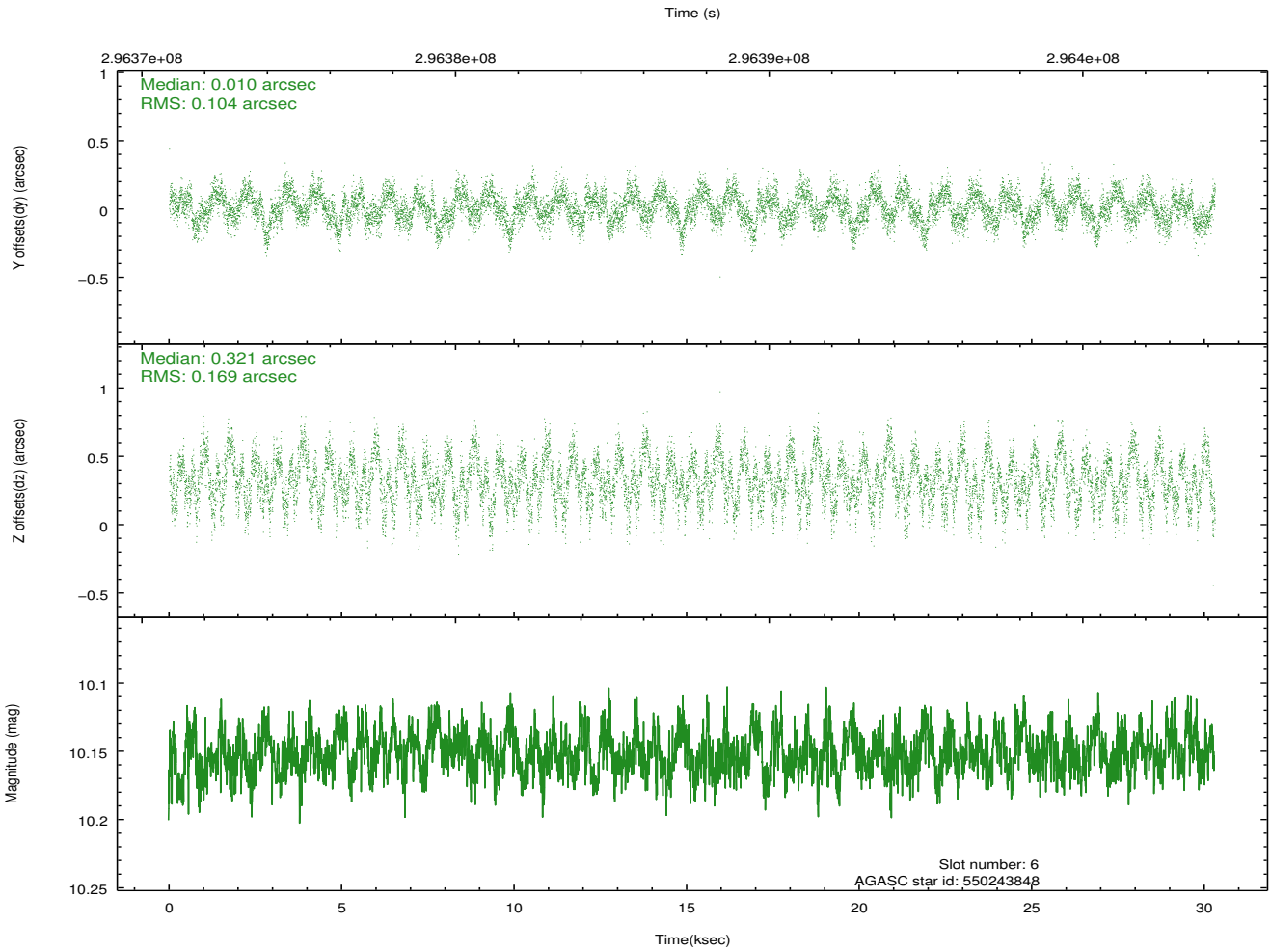
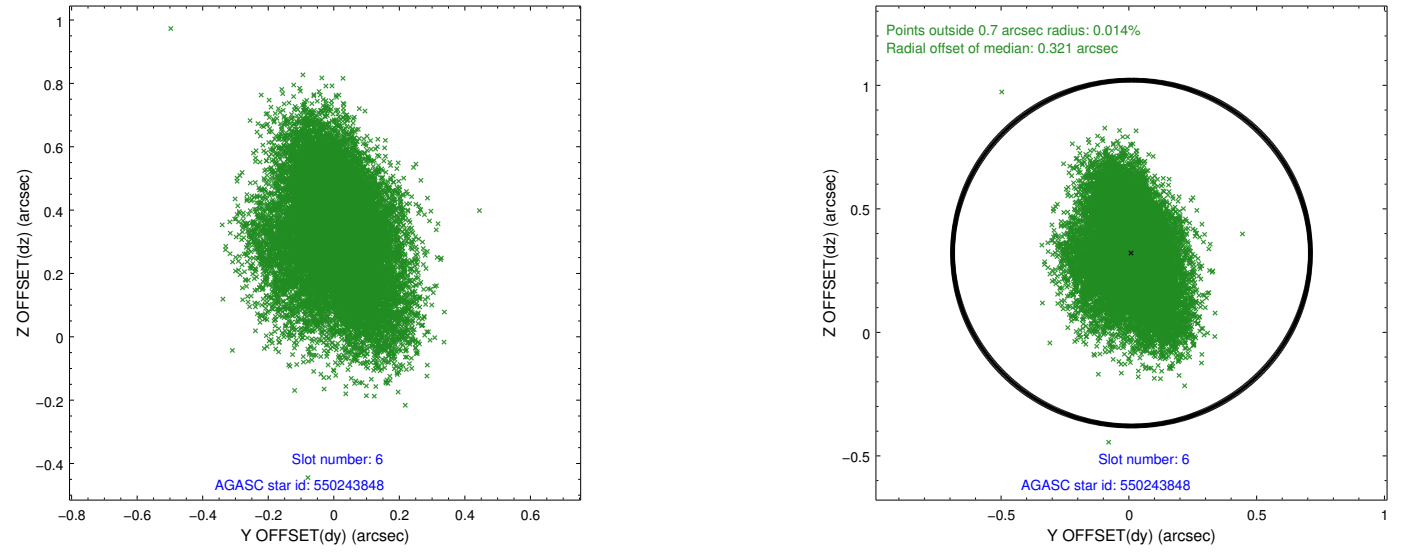
2.4.2 Slot 4



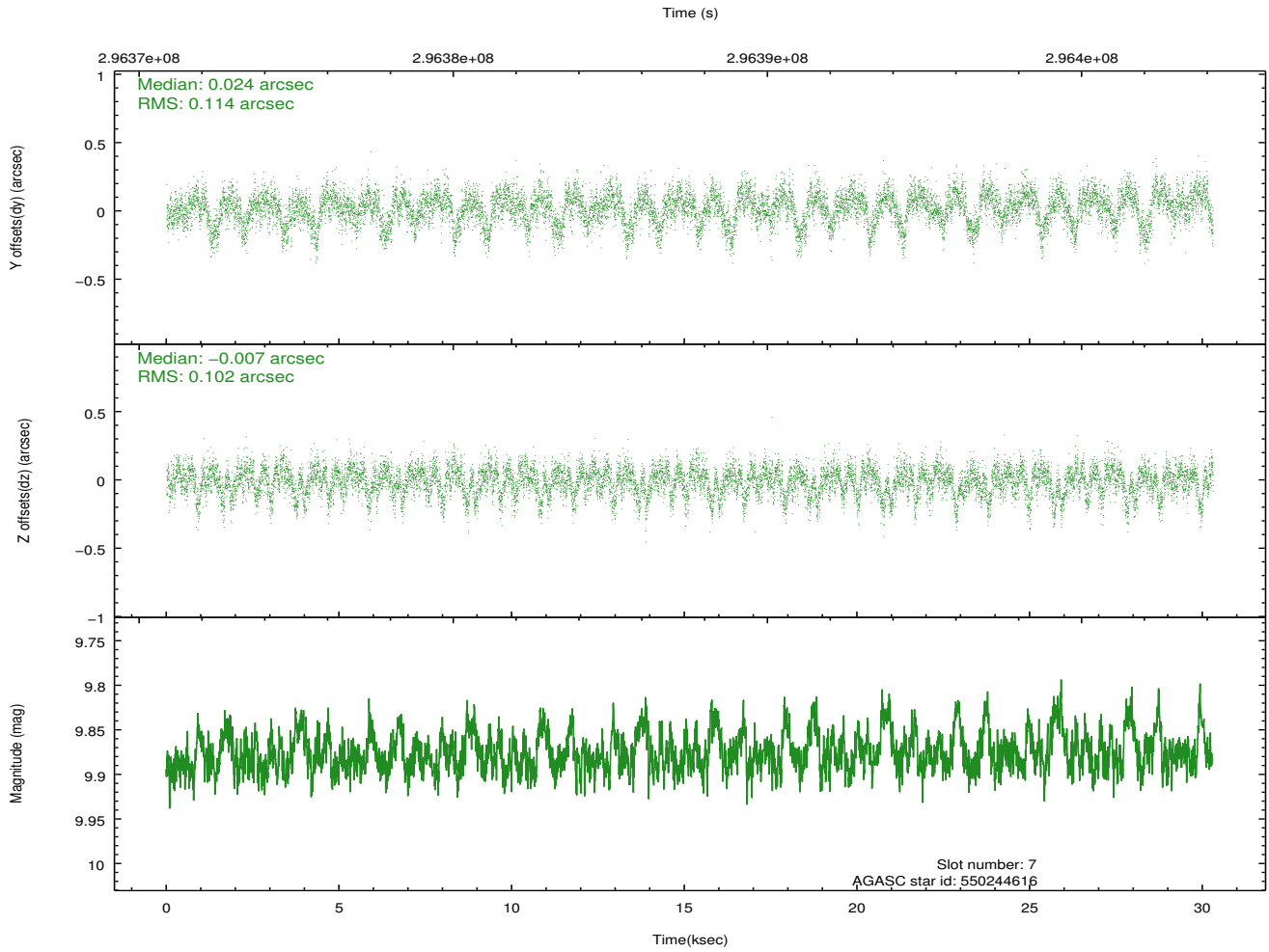
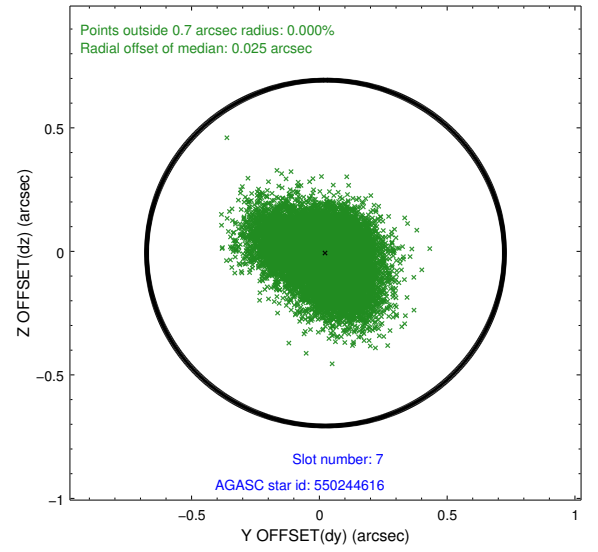
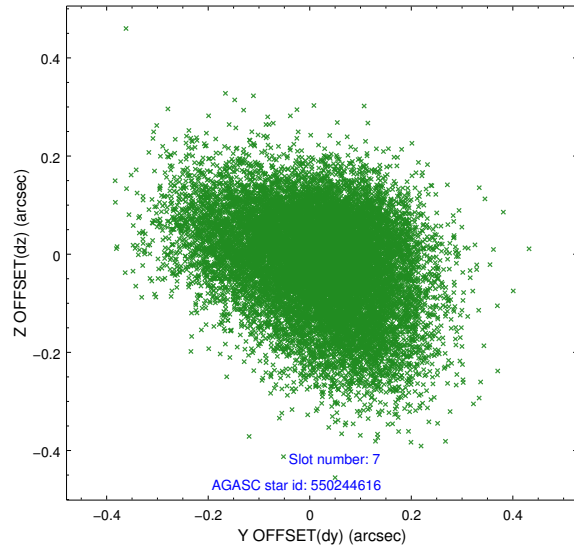
2.4.3 Slot 5



2.4.4 Slot 6

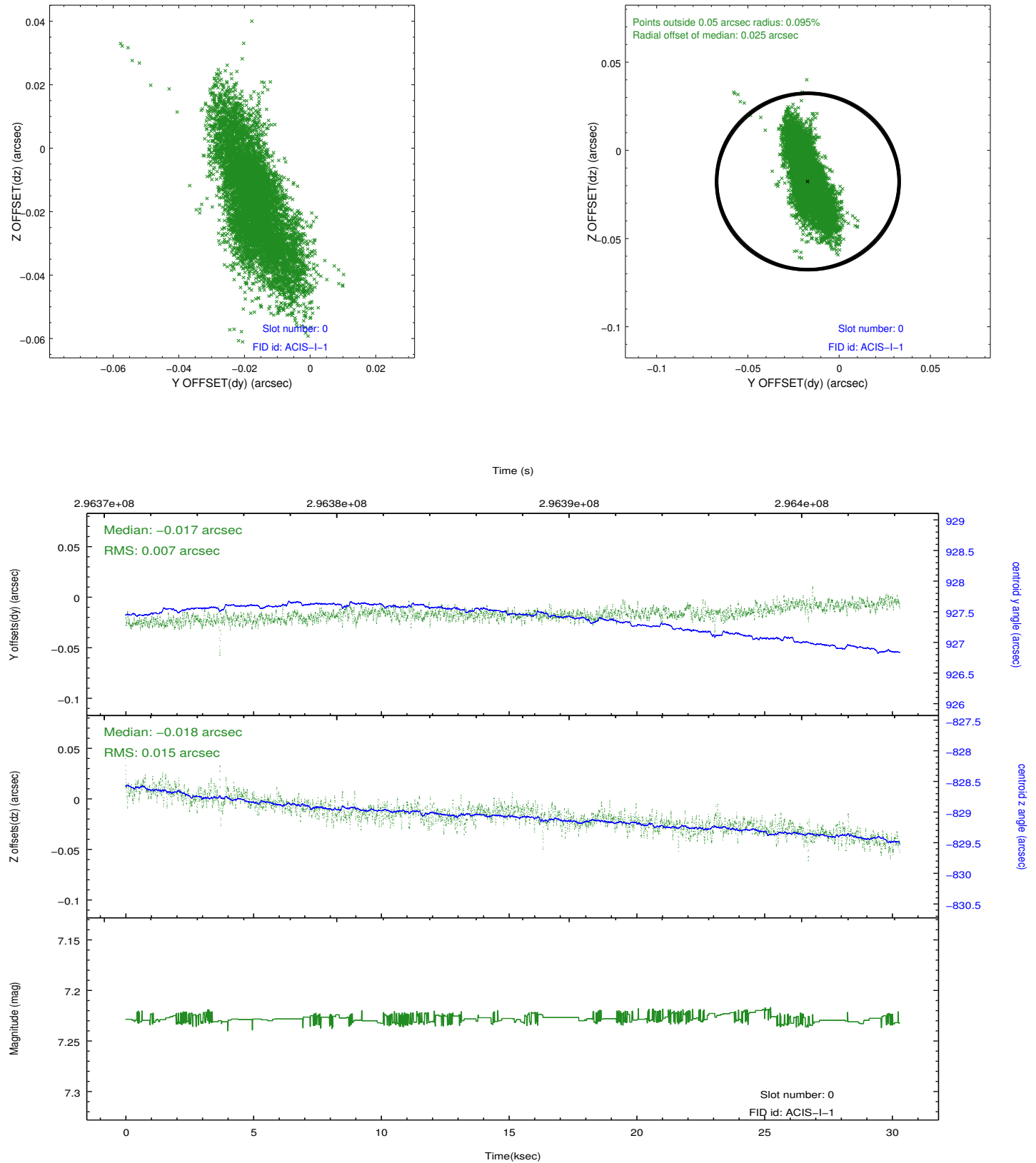


2.4.5 Slot 7

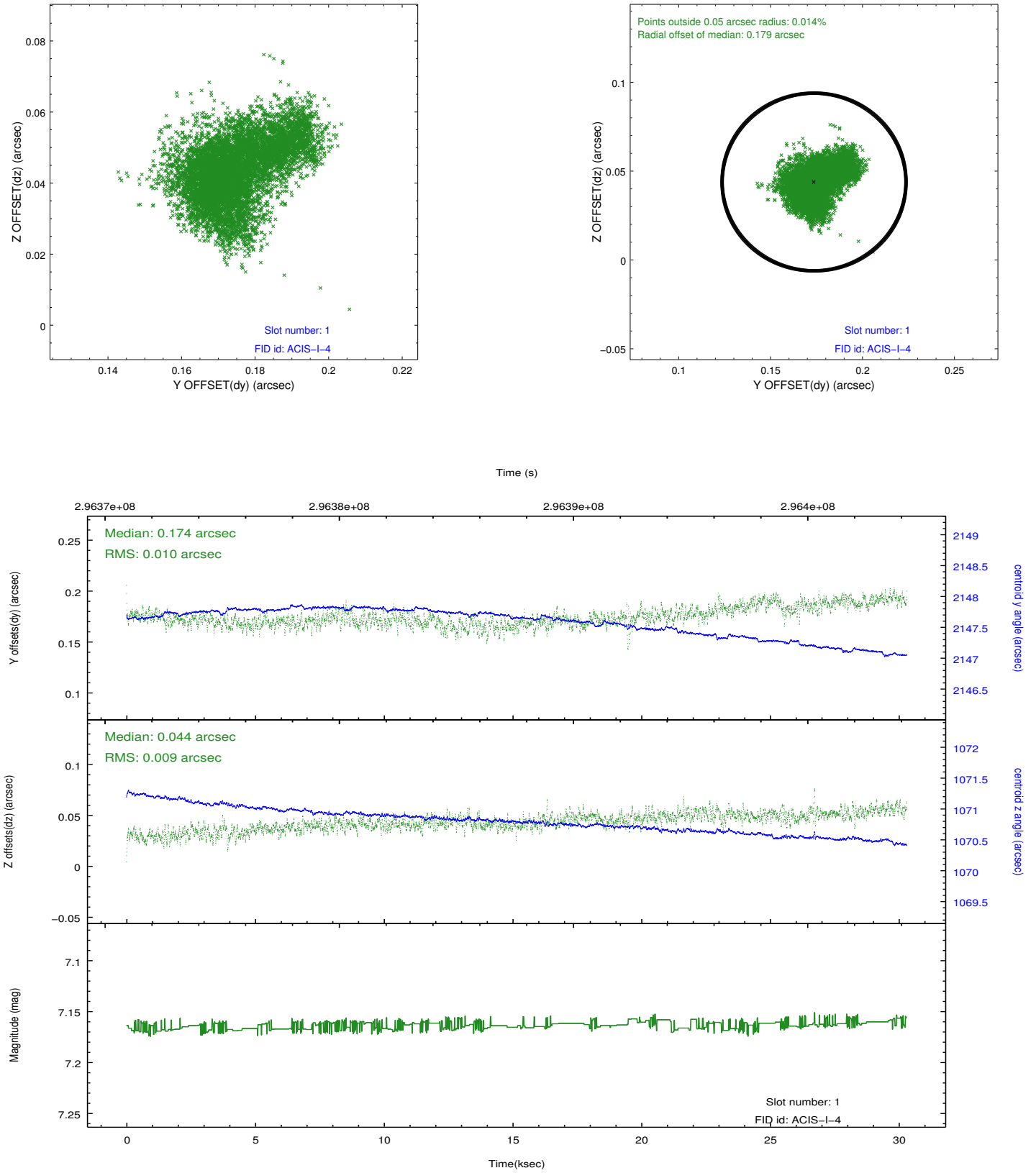


2.5 FID Slots

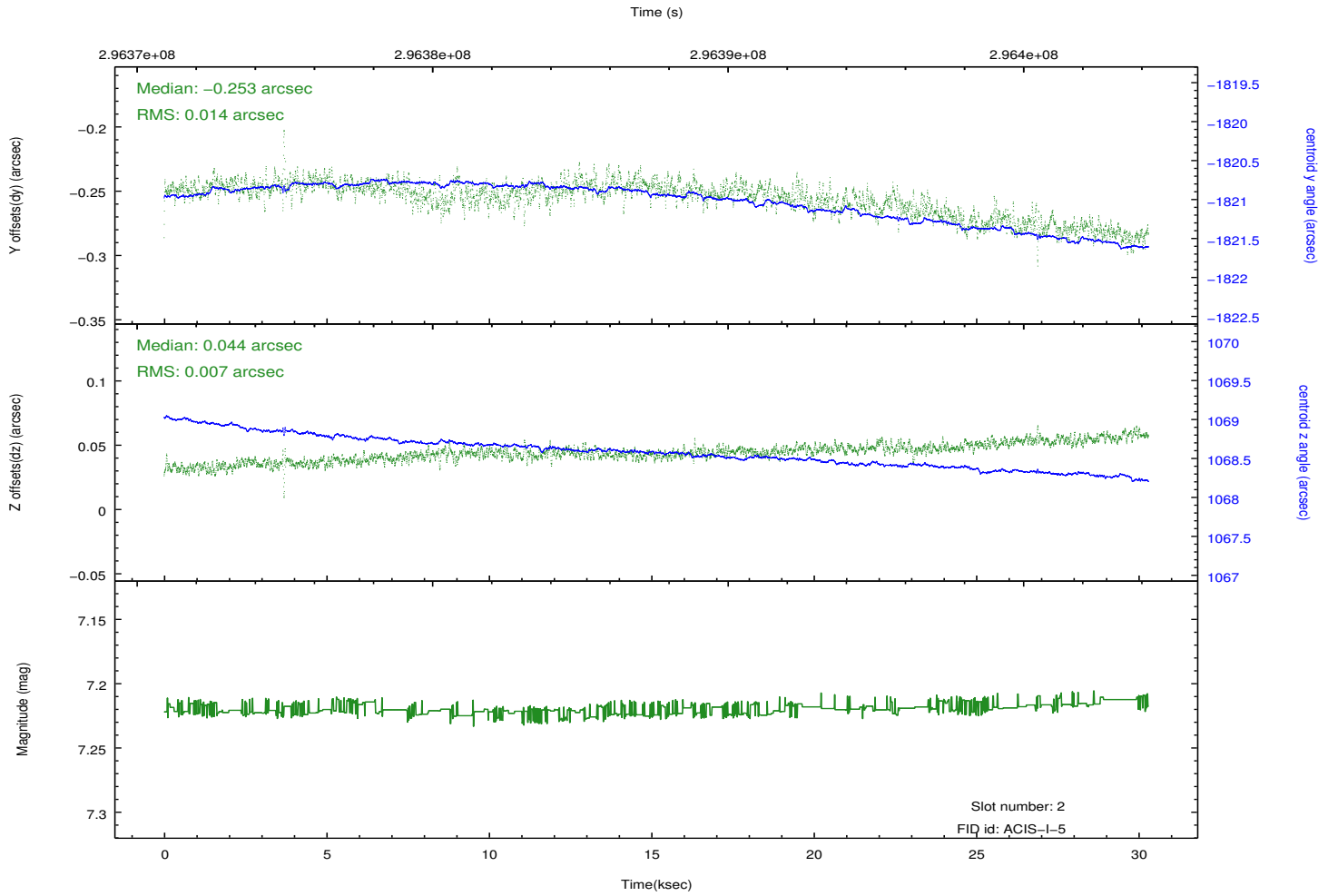
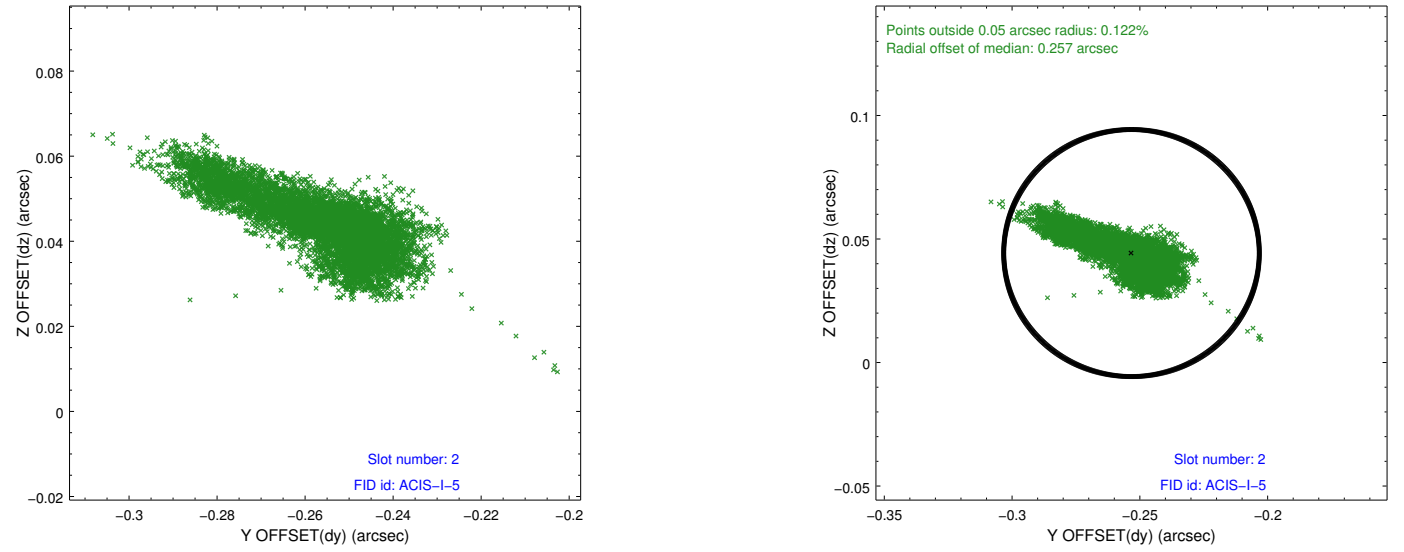
2.5.1 Slot 0



2.5.2 Slot 1



2.5.3 Slot 2



A Summary

A.1 Status

V&V Scientist	Jen Lauer
V&V Date (YYYY-MM-DD)	2012.04.25
V&V Edition	1
V&V Disposition and Status	OK
V&V Charge Time	30.0415998

A.2 Comments