

# V&V Reference Report

## L2 ASCDS Version : 8.4.4

Observation 7806 - L2 Version 3  
Chandra X-Ray Center

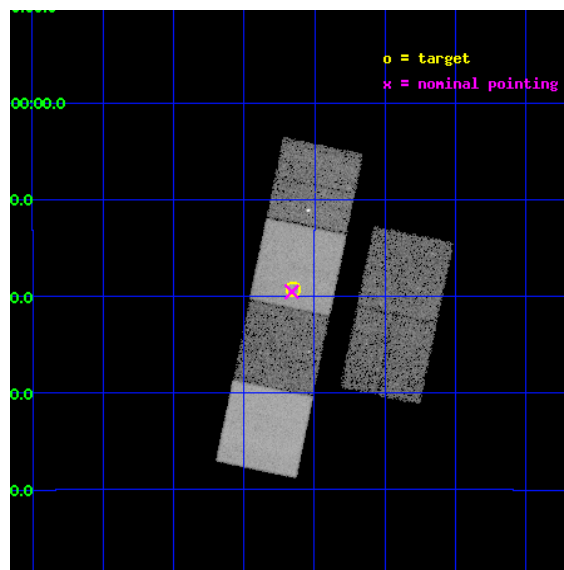
L2 Processing Date : Apr 22 2012

## Contents

<b>1</b>	<b>Front</b>	<b>2</b>
<b>2</b>	<b>OBI</b>	<b>3</b>
2.1	OBI . . . . .	3
2.1.1	Images . . . . .	3
2.1.2	Bias . . . . .	3
2.1.3	Parameters . . . . .	4
2.1.4	Events . . . . .	4
2.2	Compared Parameters . . . . .	5
2.3	Aspect . . . . .	6
2.4	Star Slots . . . . .	9
2.4.1	Slot 3 . . . . .	9
2.4.2	Slot 4 . . . . .	10
2.4.3	Slot 5 . . . . .	11
2.4.4	Slot 6 . . . . .	12
2.4.5	Slot 7 . . . . .	13
2.5	FID Slots . . . . .	14
2.5.1	Slot 0 . . . . .	14
2.5.2	Slot 1 . . . . .	15
2.5.3	Slot 2 . . . . .	16
<b>A</b>	<b>Summary</b>	<b>17</b>
A.1	Status . . . . .	17
A.2	Comments . . . . .	17

# 1 Front

seq_num	701470	Sequence number
obs_id	7806	Observation id
title	The Chandra-RBGS Survey of a Complete Sample of Luminous Infrared Galaxies	Proposal title
observer	Professor David Sanders	Principal investigator
object	IRAS F09111-1007	Source name
dtcycle	0	&#160
cycle	P	events from which exps? Prim/Second/Both
ra_targ	138.411667	Observer's specified target RA [deg]
dec_targ	-10.322306	Observer's specified target Dec [deg]
ra_nom	138.41505934896	Nominal RA [deg]
dec_nom	-10.325831890604	Nominal Dec [deg]
roll_nom	281.81745524998	Nominal Roll [deg]
revision	3	Processing version of data
ontime	14817.993552387	Sum of GTIs [s]
livetime	14630.359195702	Livetime [s]
ontime2	14818.03459239	Sum of GTIs [s]
ontime3	14817.870432377	Sum of GTIs [s]
ontime5	14817.952512383	Sum of GTIs [s]
ontime6	14817.91147238	Sum of GTIs [s]
ontime7	14817.993552387	Sum of GTIs [s]
ontime8	14817.829392374	Sum of GTIs [s]
l2events	190443	Number of level 2 events

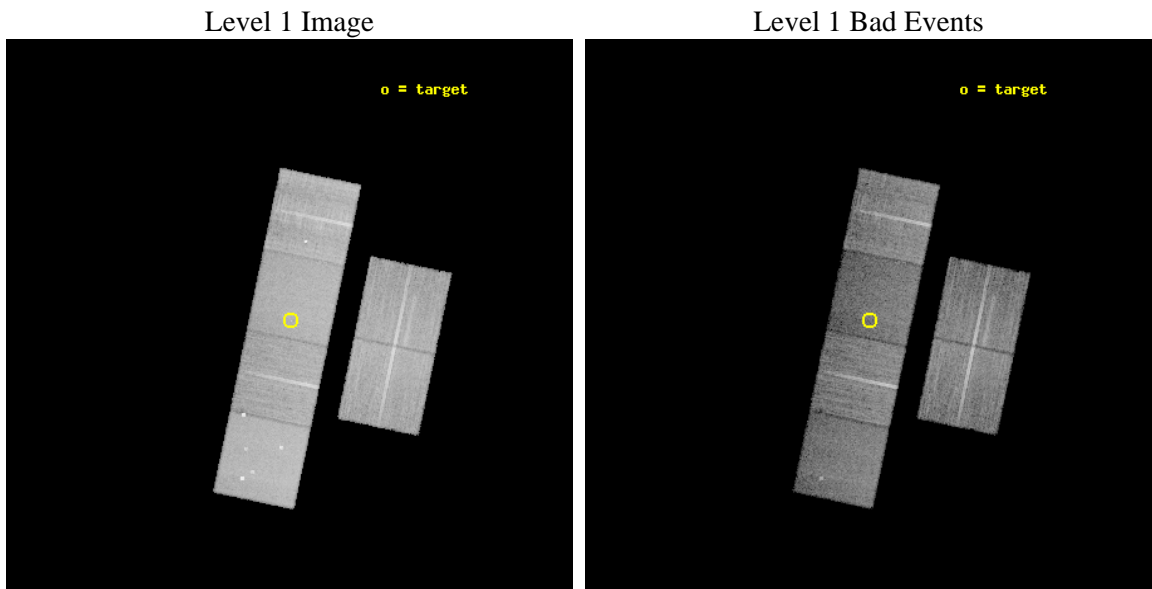




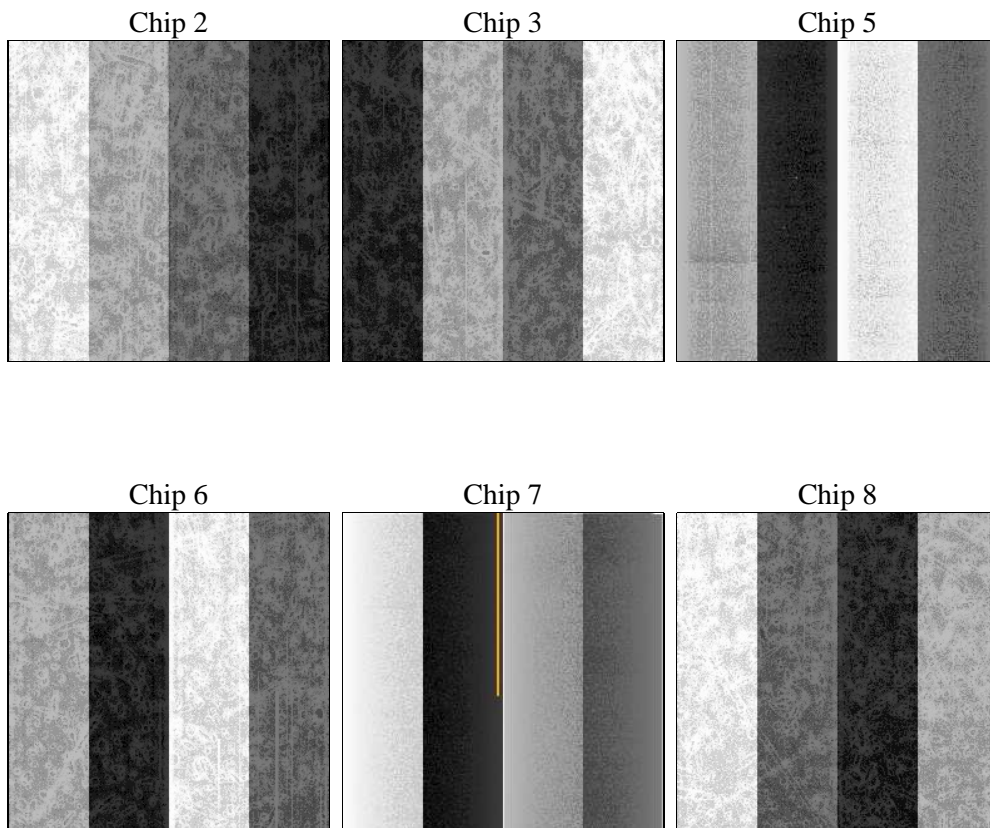
## 2 OBI

### 2.1 OBI

#### 2.1.1 Images



#### 2.1.2 Bias



### 2.1.3 Parameters

obi_num	0	Obi number	sched_exp_time	14775.594000	[s] Scheduled observation exposure time
ascdsver	8.4.4	Processing system revision	ontime	14817.993552387	Sum of GTIs [s]
caldsver	4.4.9	&#160	ontime2	14818.03459239	Sum of GTIs [s]
date	2012-04-22T04:20:53	Date and time of file creation	ontime3	14817.870432377	Sum of GTIs [s]
revision	3	Processing version of data	ontime5	14817.952512383	Sum of GTIs [s]
			ontime6	14817.91147238	Sum of GTIs [s]
			ontime7	14817.993552387	Sum of GTIs [s]
			ontime8	14817.829392374	Sum of GTIs [s]
			l1events	813496	Number of level 1 events

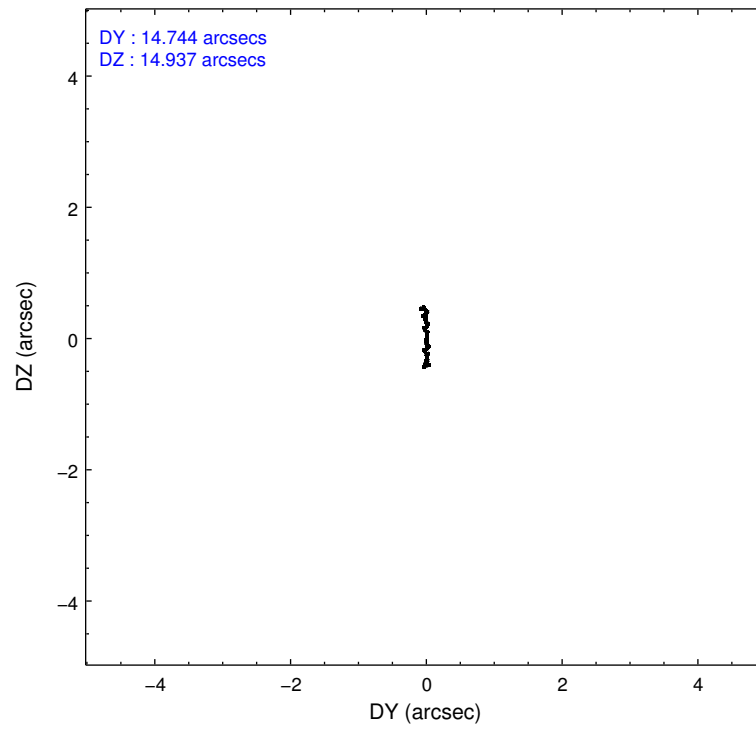
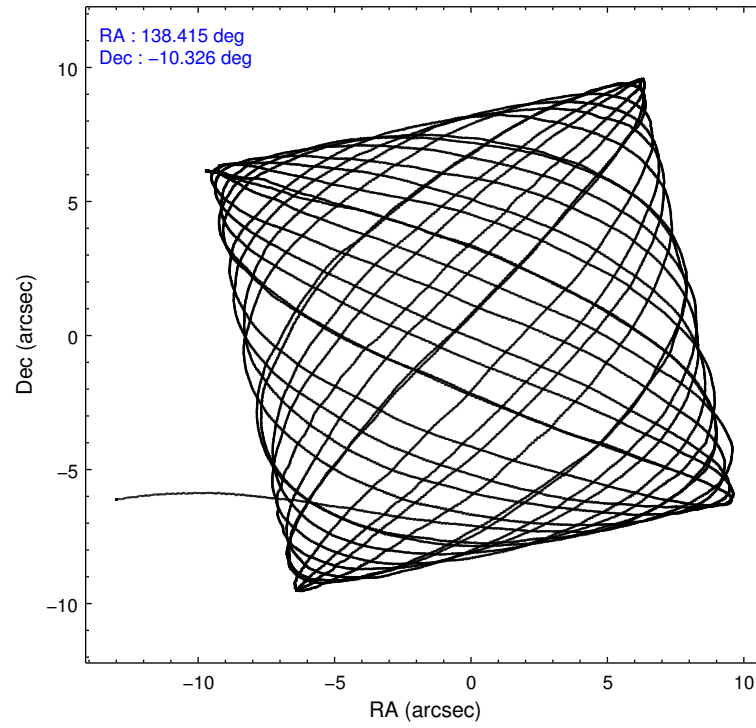
### 2.1.4 Events

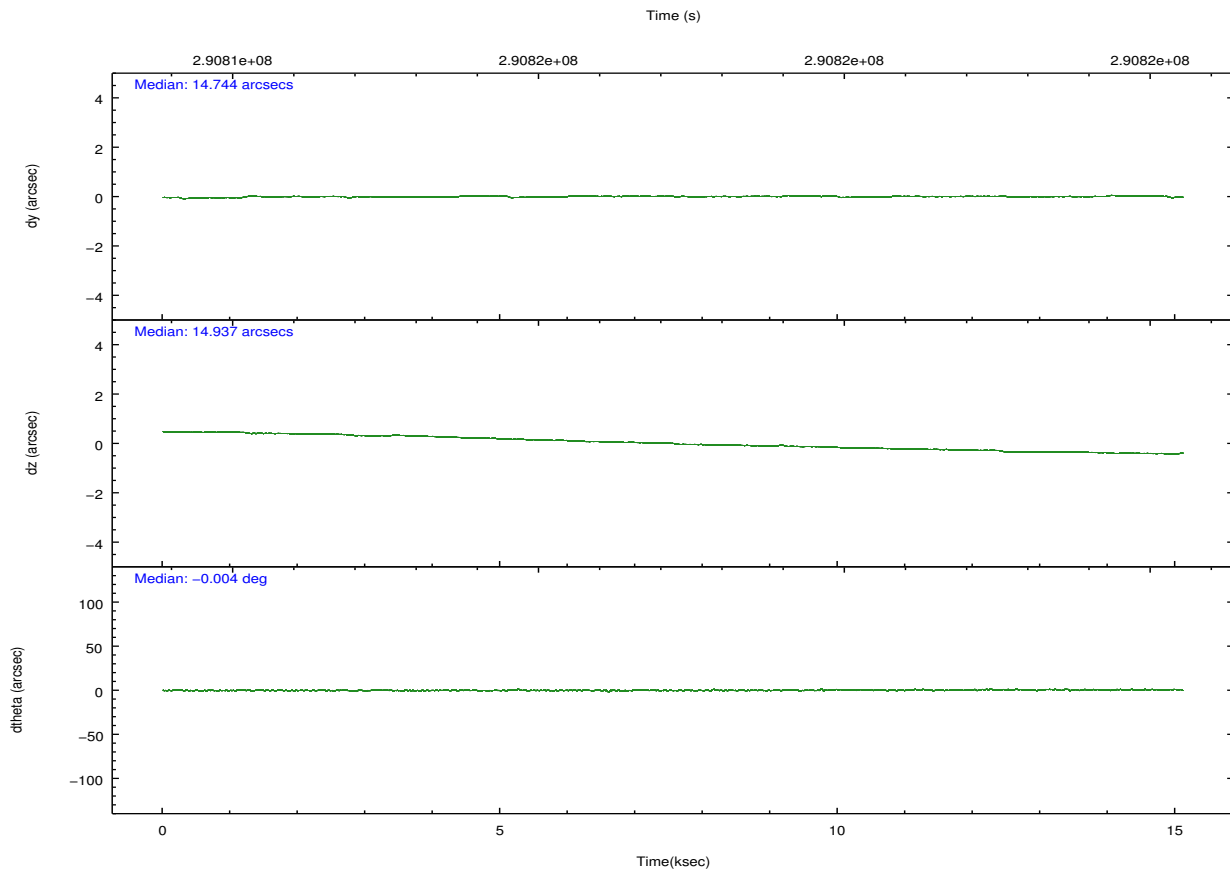
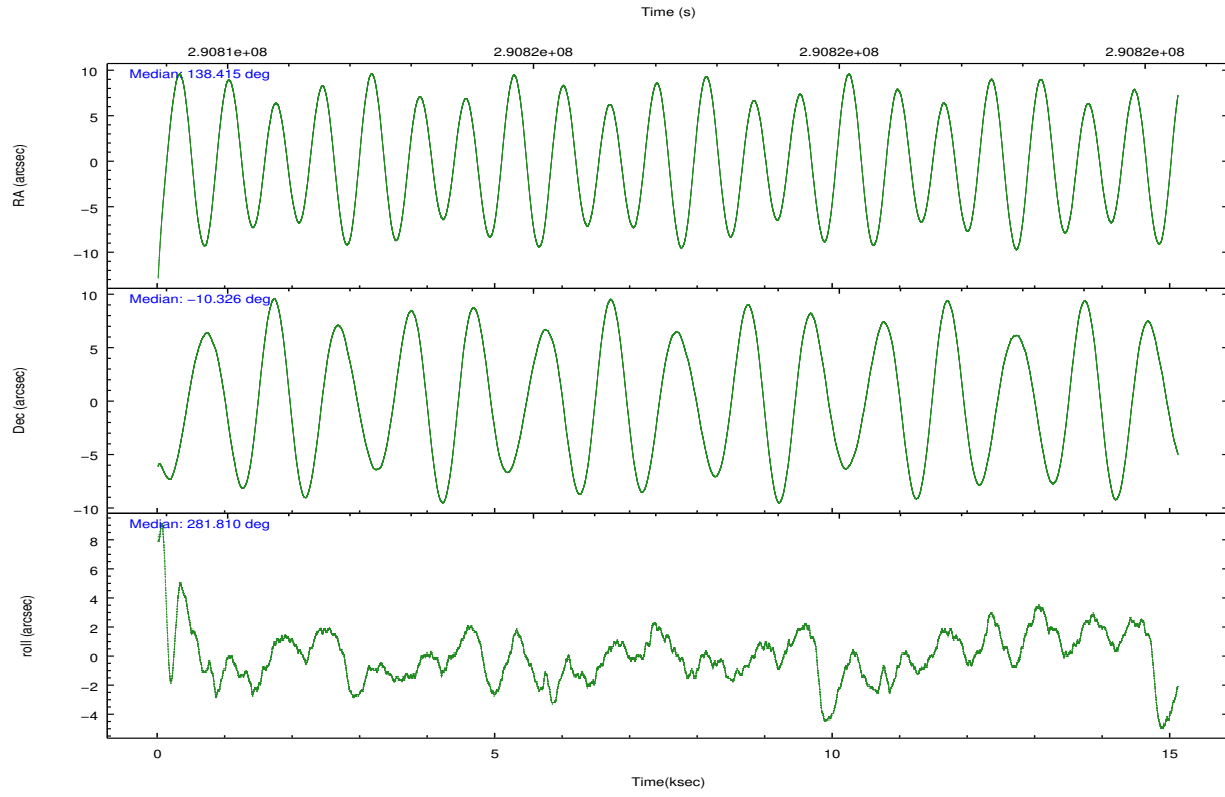
	ccd 2	ccd 3	ccd 5	ccd 6	ccd 7	ccd 8		ccd 2	ccd 3	ccd 5	ccd 6	ccd 7	ccd 8
level 1 events	126166	115072	167039	118007	134670	152542	grade 0 events	5308	5051	10224	5581	5856	13873
rejected events	113195	102616	81030	104273	70874	113157		4%	4%	6%	4%	4%	9%
rejected %	89%	89%	48%	88%	52%	74%	grade 1 events	76	68	271	77	144	126
								0%	0%	0%	0%	0%	0%
							grade 2 events	2868	2418	25632	2862	12620	8503
								2%	2%	15%	2%	9%	5%
							grade 3 events	1331	1370	3660	1422	5774	3912
								1%	1%	2%	1%	4%	2%
							grade 4 events	1319	1361	3414	1288	5672	3603
								1%	1%	2%	1%	4%	2%
							grade 5 events	3967	4514	13115	4612	13829	6733
								3%	3%	7%	3%	10%	4%
							grade 6 events	2160	2261	43129	2589	33904	9509
								1%	1%	25%	2%	25%	6%
							grade 7 events	109137	98029	67594	99576	56871	106283
								86%	85%	40%	84%	42%	69%

## 2.2 Compared Parameters

Parameter	Planned	Actual	Parameter	Planned	Actual
Instrument	ACIS	ACIS	Obspar format version number	7	7
Detector	ACIS-235678	ACIS-235678	Obspar file type	PREDICTED	ACTUAL
Grating	NONE	NONE	Obspar update status	NONE	UPDATED
Data mode	VFAINT	VFAINT	CCD I0 on	N	N
Observation mode	POINTING	POINTING	CCD I1 on	N	N
[deg] Pointing RA	138.396247	138.4150593489558	CCD I2 on	O1	Y
[deg] Pointing Dec	-10.305694	-10.32583189060362	CCD I3 on	O2	Y
[deg] Pointing Roll	281.657458	281.8174552499785	CCD S0 on	N	N
[mm] SIM focus pos	-0.684267	-0.6828225247311905	CCD S1 on	O3	Y
[mm] SIM defocus	0	0.001444936568705701	CCD S2 on	O5	Y
[mm] SIM translation stage pos	-190.132523	-190.1400660498719	CCD S3 on	Y	Y
[mm] SIM translation stage offset	0	0.00754346686406393	CCD S4 on	O4	Y
[s] Observation start time (MET)	290809979.184000	290808752.40348	CCD S5 on	N	N
Observation start date	2007-03-20T20:31:54	2007-03-20T20:12:32	Number of optional ACIS chips dropped	0	0
[s] Observation end time (MET)	290824755.184000	290824967.90425	On-chip summing requested	N	N
Observation end date	2007-03-21T00:38:10	2007-03-21T00:42:47	Subarray requested	NONE	NONE
Read mode	TIMED	TIMED	Alternating exposures requested	N	N
			[s] Primary exposure time	0.000000	3.2

## 2.3 Aspect



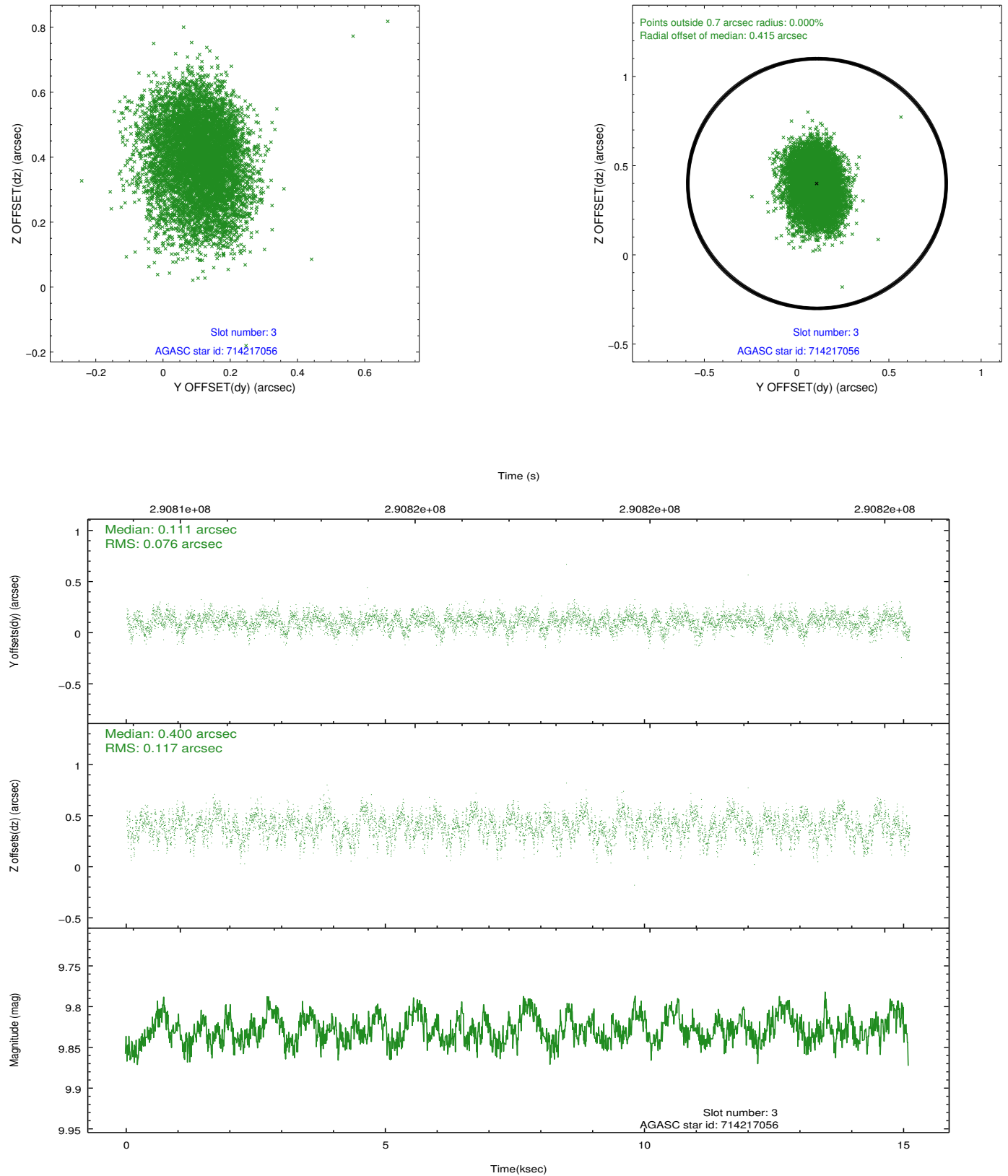


### Slot Statistics

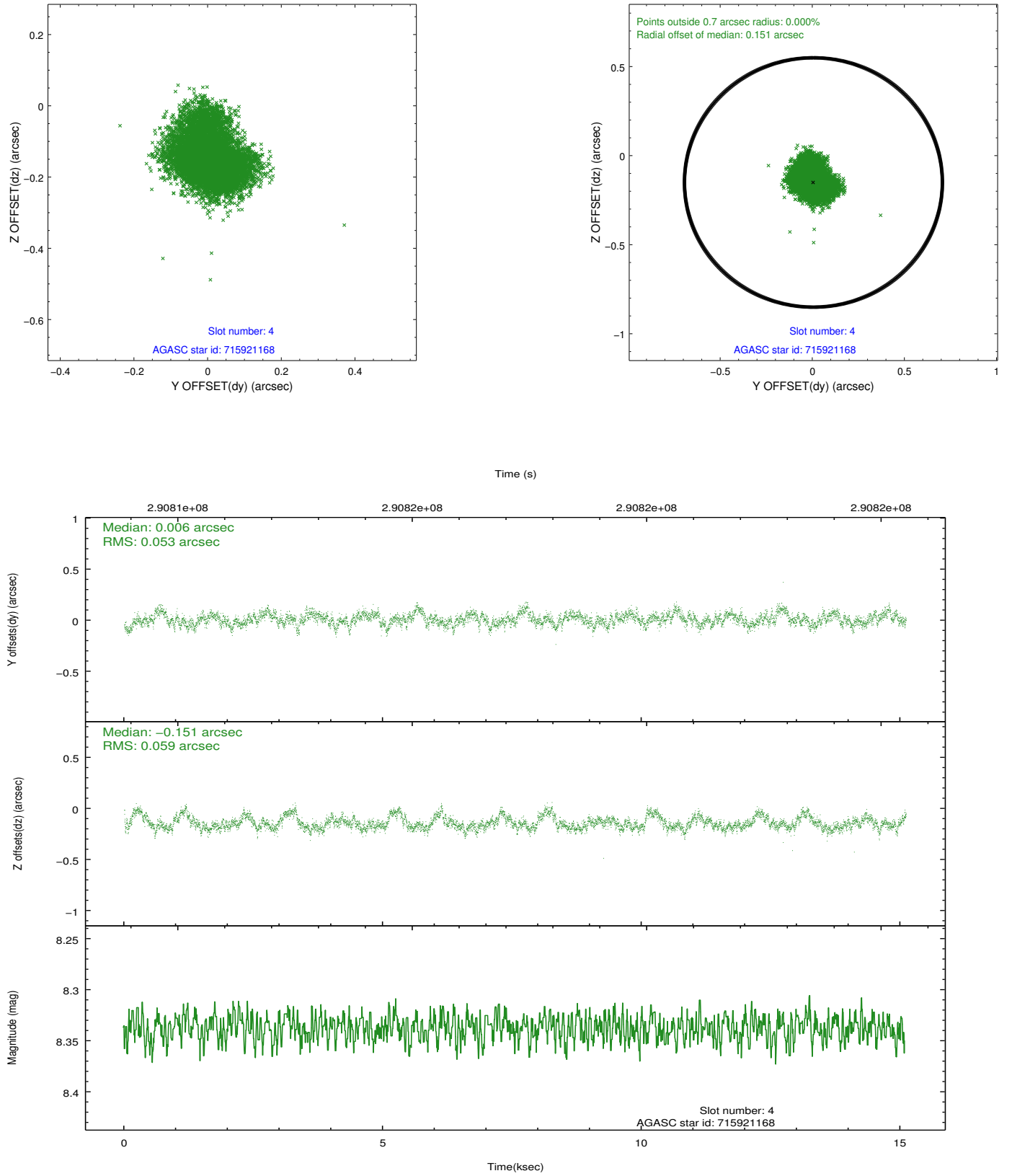
slot	status	id	mag	n_pts	med_dy	med_dz	dr1	dr2	ra	dec	mean_y	mean_z
0	FID	ACIS-S-2	7.09	3685	-0.094	-0.039	0.010	0.017	0.000000	0.000000	-767.79	-1736.37
1	FID	ACIS-S-4	7.19	3685	0.216	0.056	0.006	0.012	0.000000	0.000000	2145.65	171.91
2	FID	ACIS-S-5	7.22	3686	-0.154	-0.008	0.009	0.014	0.000000	0.000000	-1820.32	165.84
3	GUIDE	714217056	9.83	7358	0.111	0.400	0.147	0.240	137.755380	-10.127321	-1085.00	-2094.46
4	GUIDE	715921168	8.34	7370	0.006	-0.151	0.086	0.135	138.119028	-10.727644	1290.27	-1267.26
5	GUIDE	715926576	10.15	7360	-0.043	0.104	0.143	0.243	138.834290	-9.609338	-2139.95	2029.19
6	GUIDE	715916064	8.84	7362	0.043	-0.074	0.098	0.156	138.268248	-10.676395	1215.70	-712.43
7	GUIDE	715924048	10.40	7350	-0.131	-0.274	0.185	0.296	138.988532	-9.914388	-953.43	2341.21

## 2.4 Star Slots

### 2.4.1 Slot 3

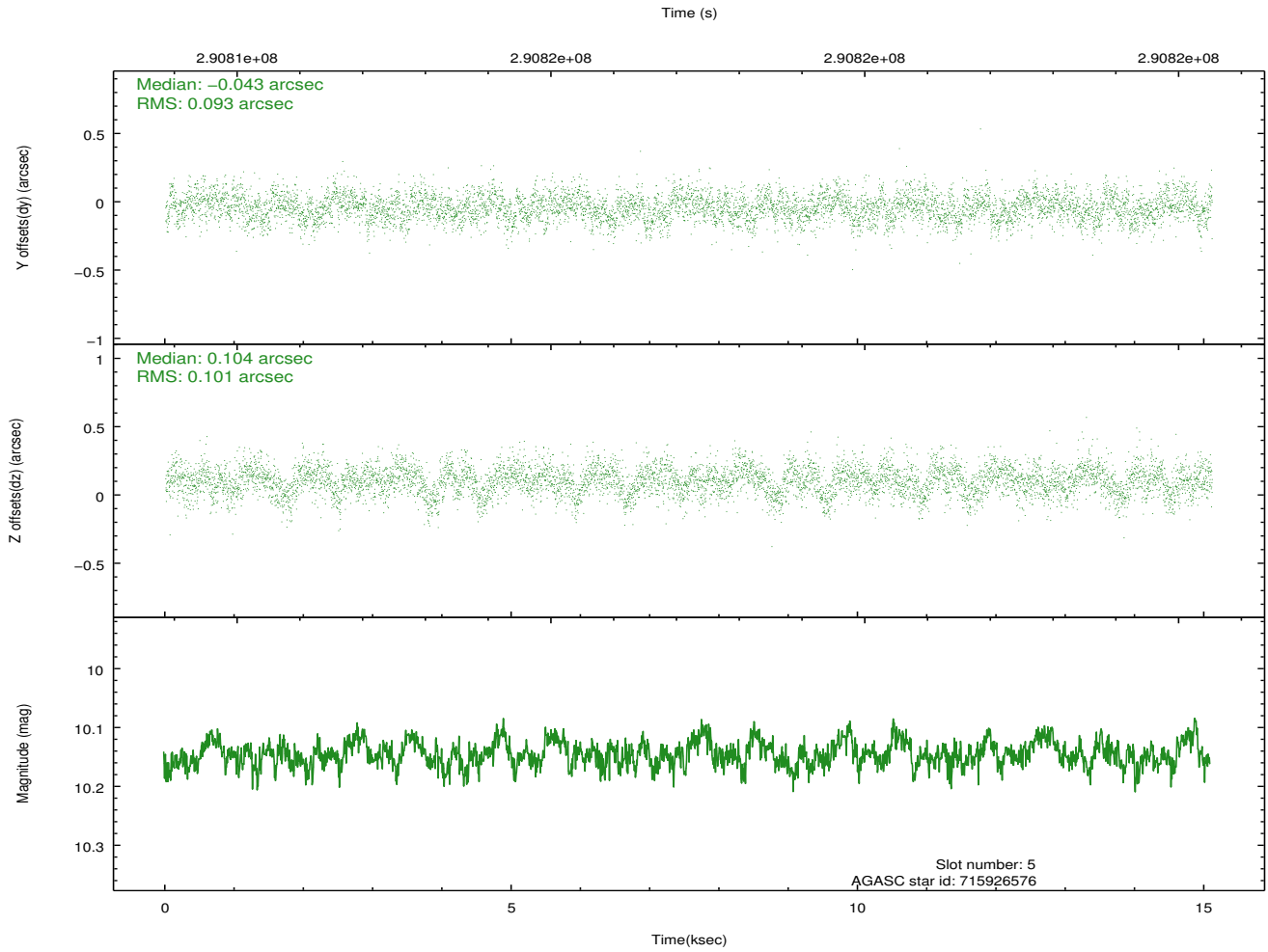
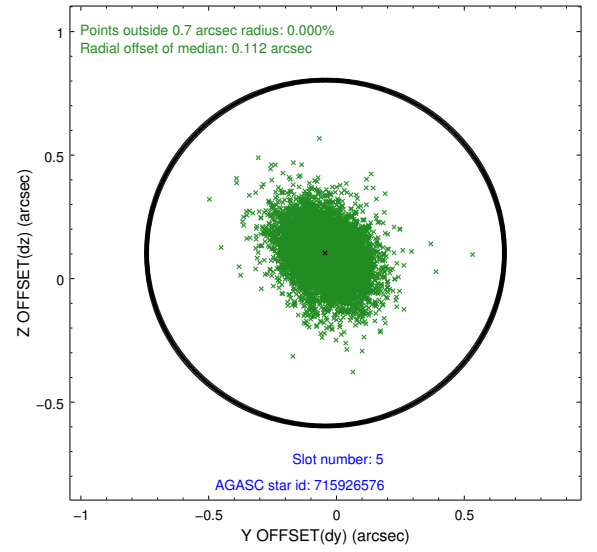
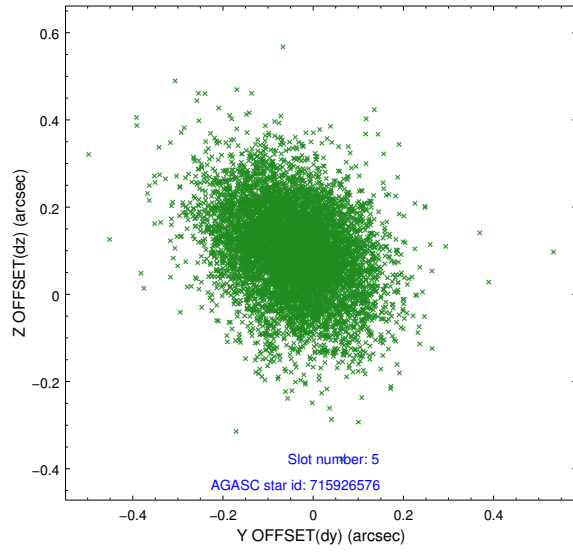


## 2.4.2 Slot 4

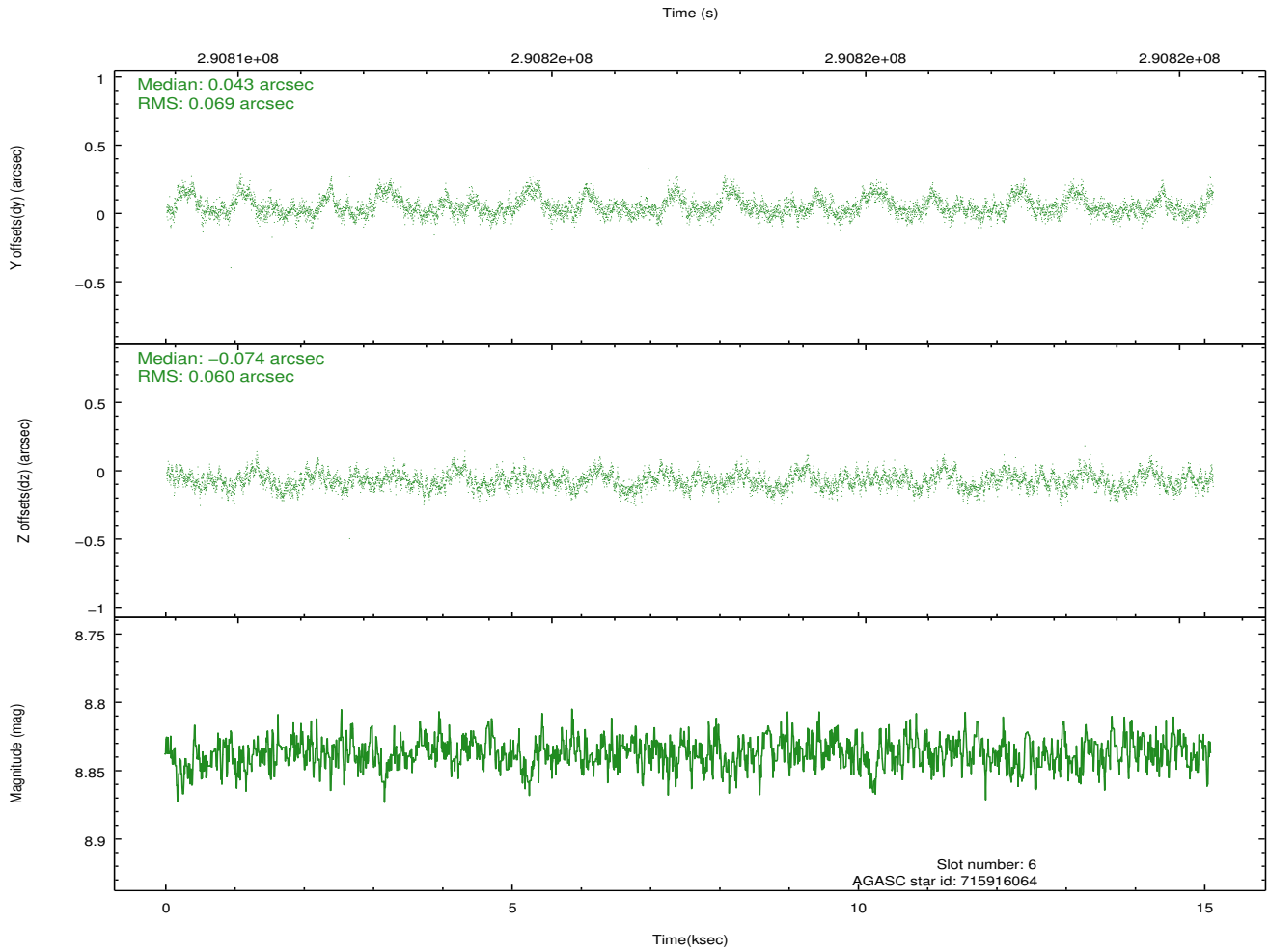
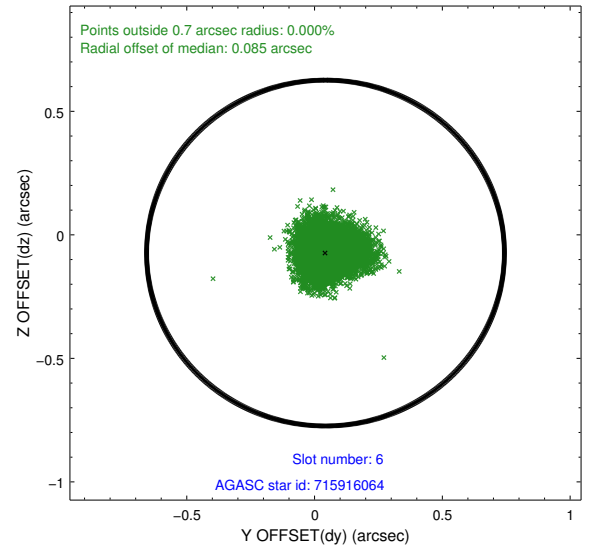
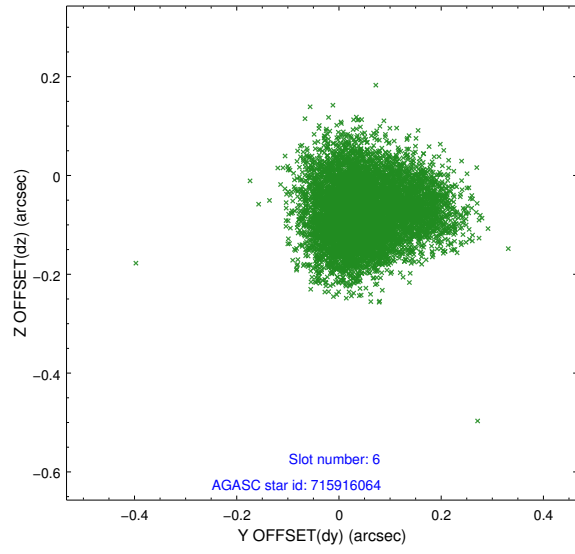




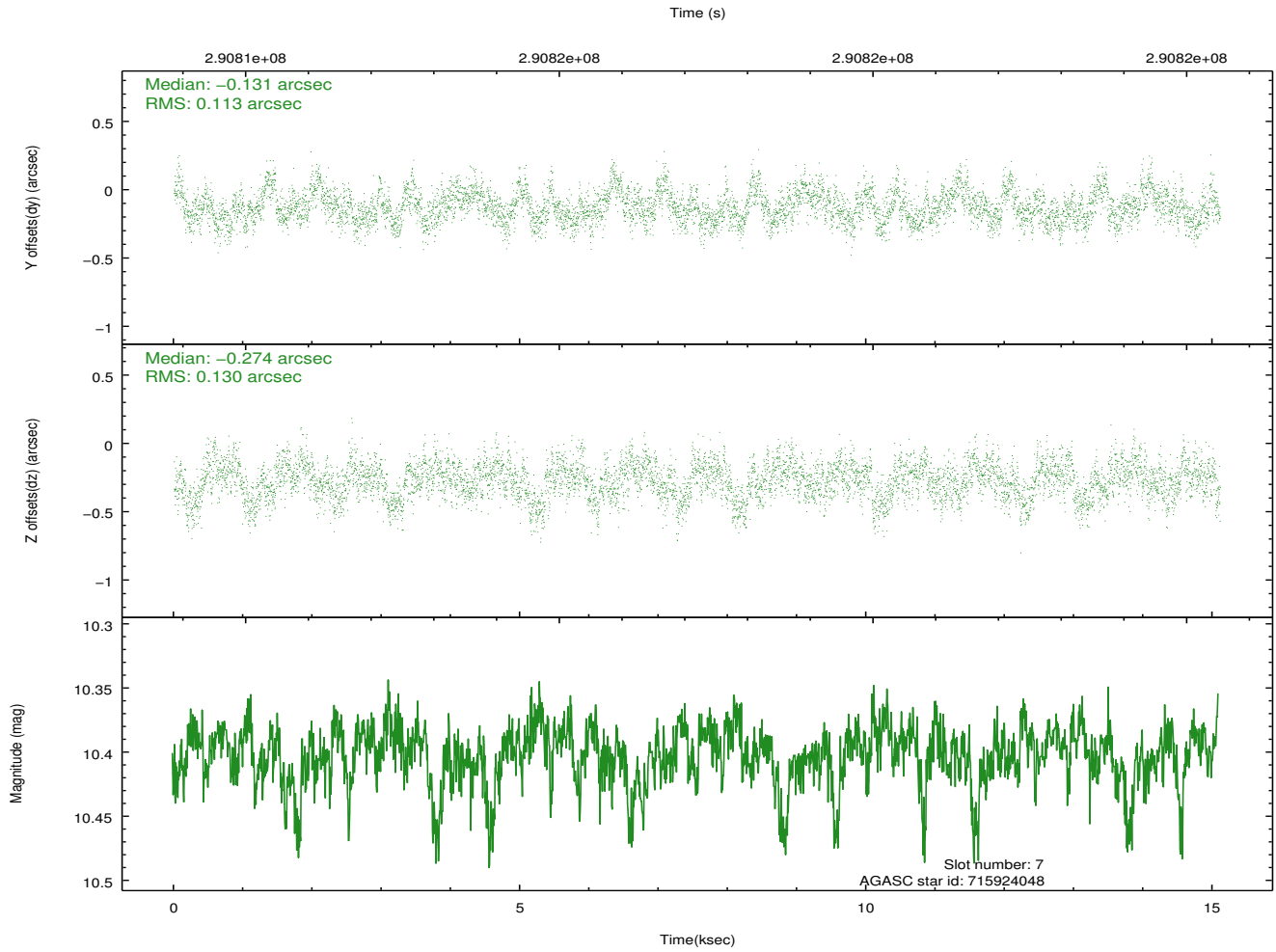
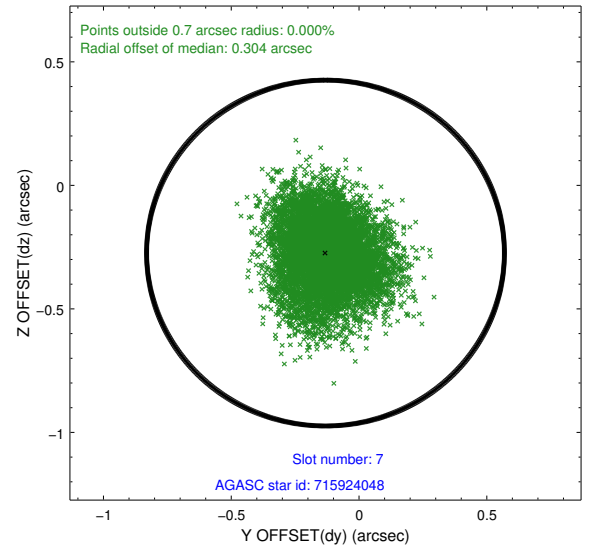
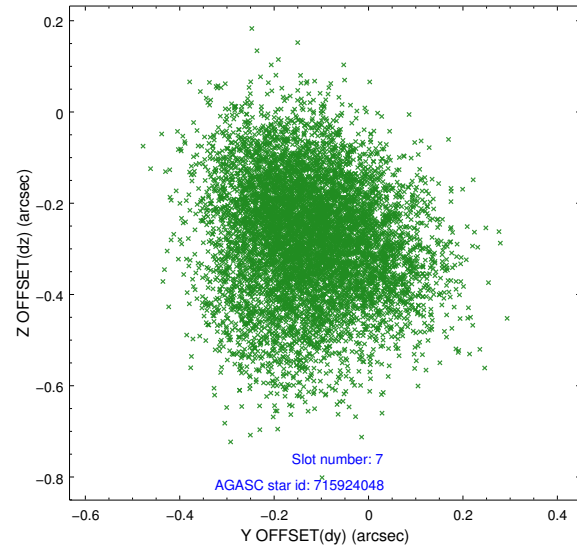
### 2.4.3 Slot 5



## 2.4.4 Slot 6

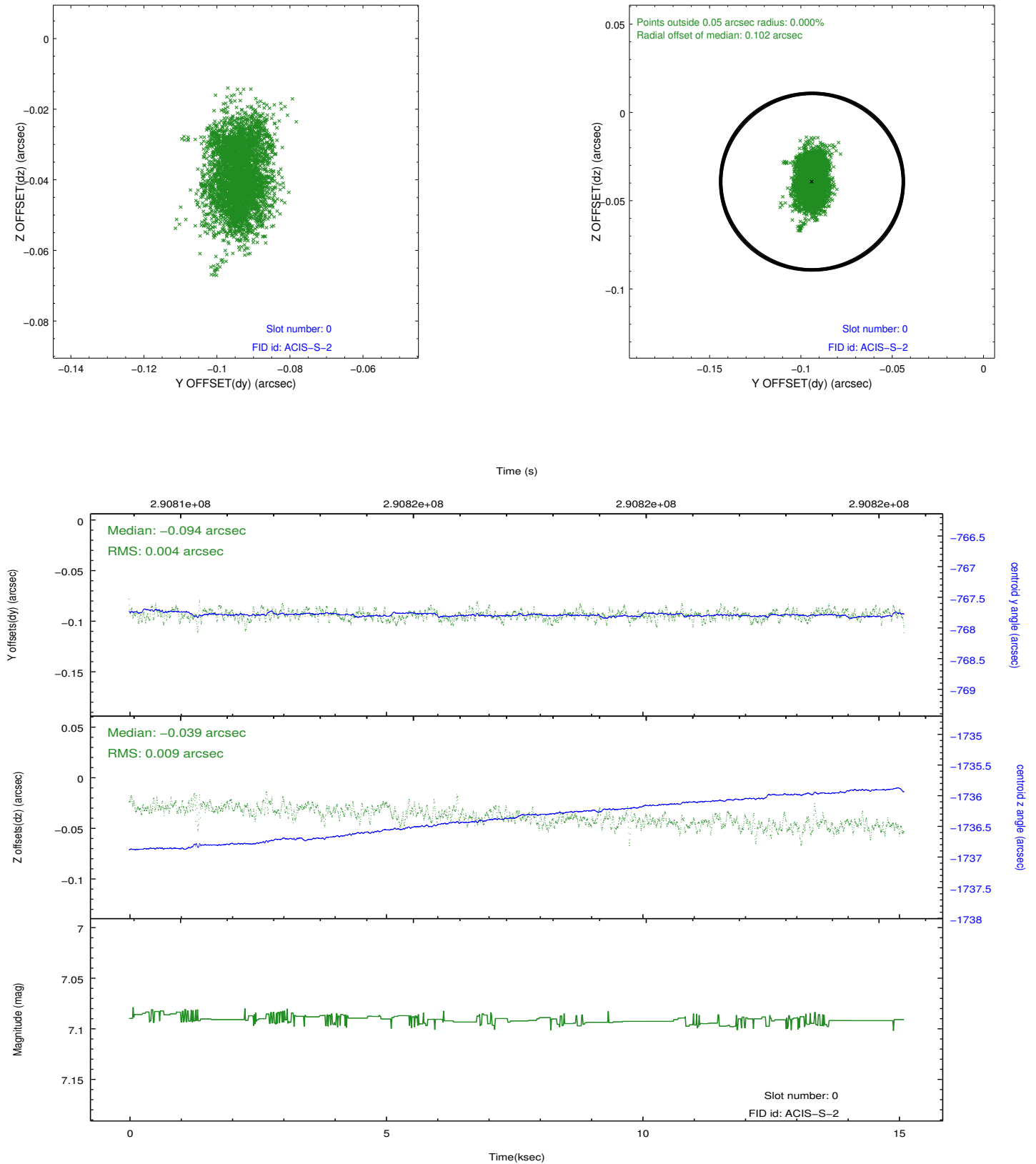


## 2.4.5 Slot 7

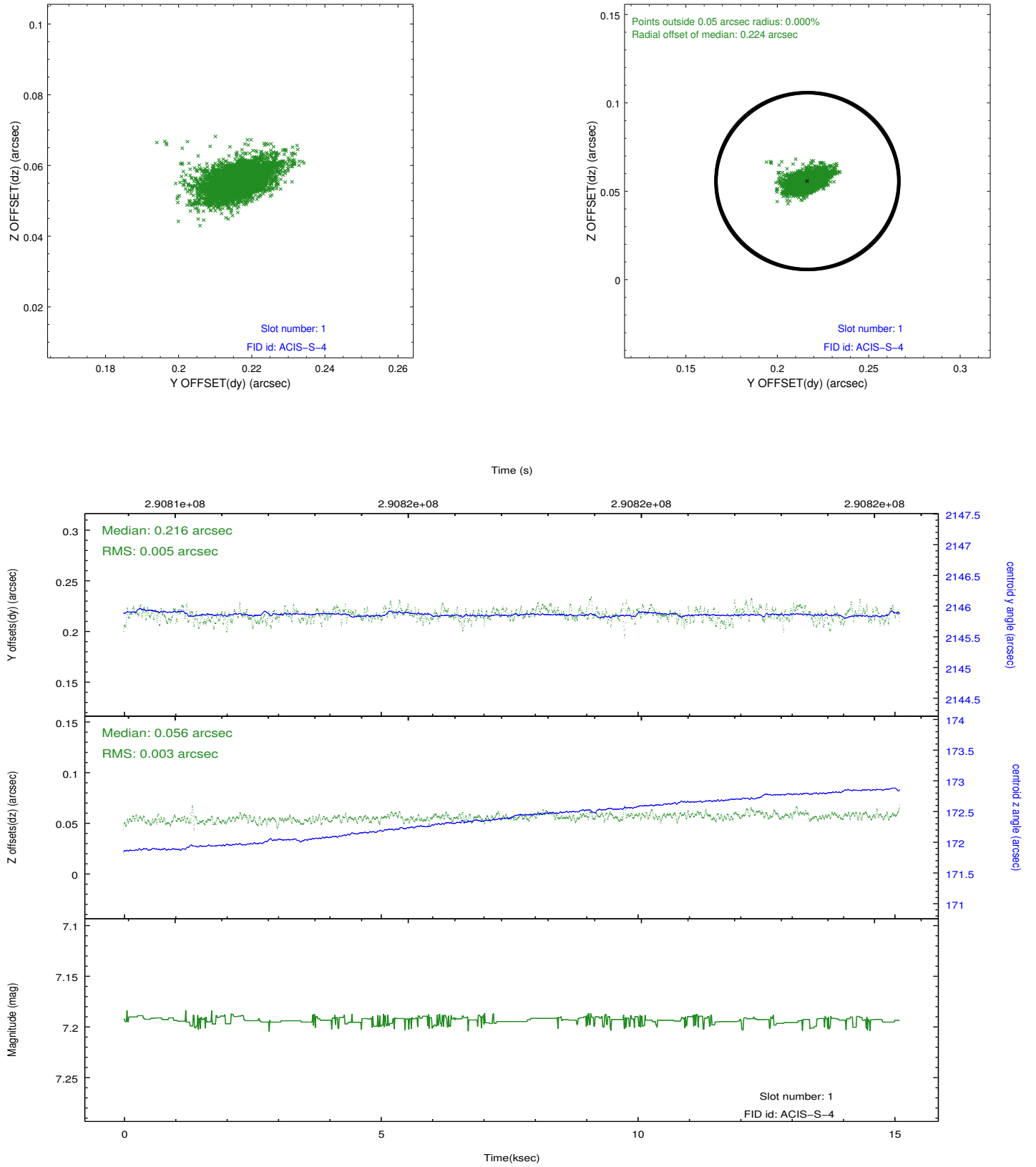


## 2.5 FID Slots

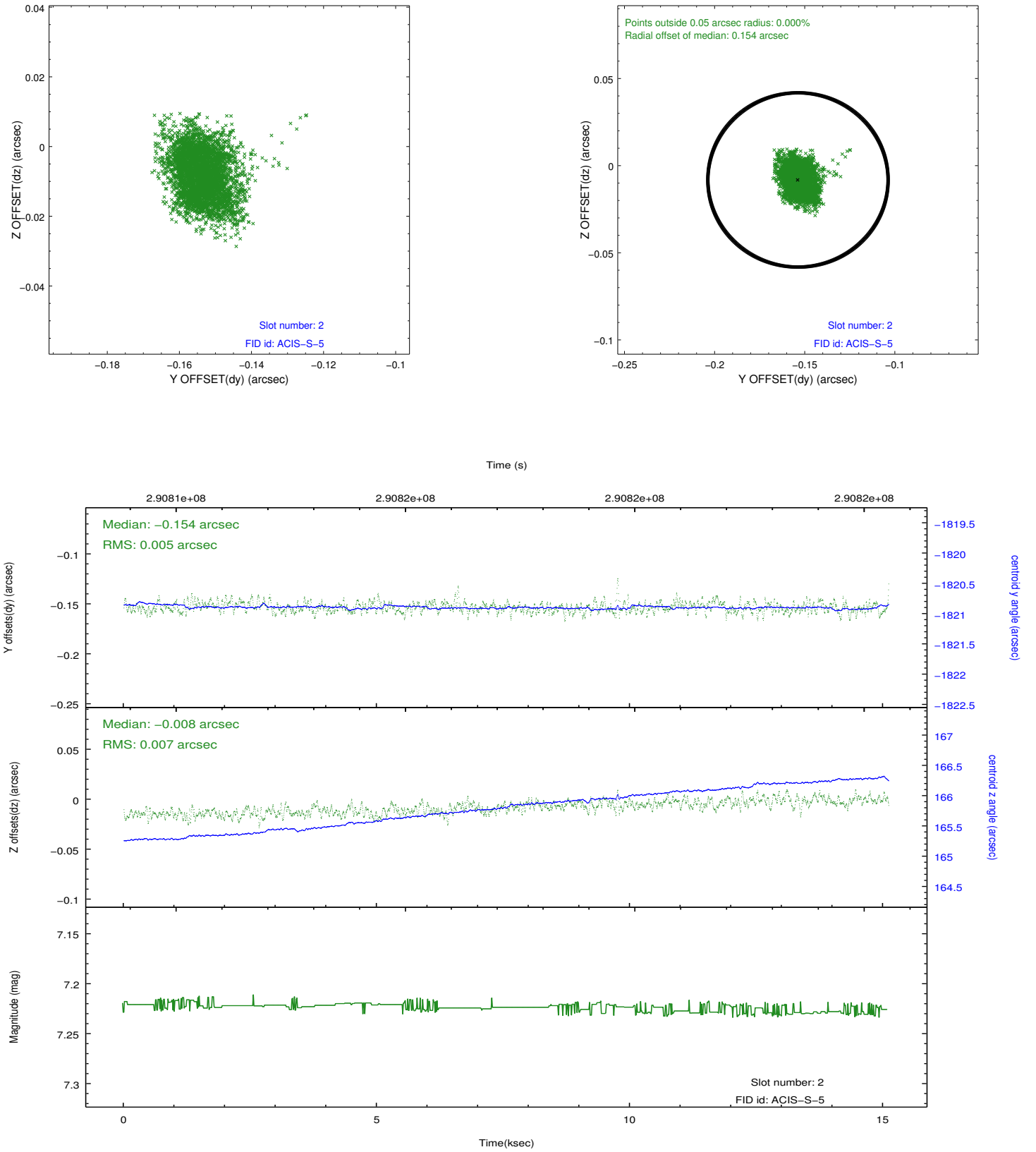
### 2.5.1 Slot 0



## 2.5.2 Slot 1



### 2.5.3 Slot 2



## A Summary

### A.1 Status

V&V Scientist	Jen Lauer
V&V Date (YYYY-MM-DD)	2012.04.23
V&V Edition	1
V&V Disposition and Status	OK
V&V Charge Time	14.8191999

### A.2 Comments