

V&V Reference Report

L2 ASCDS Version : 8.4.4

Observation 7556 - L2 Version 3
Chandra X-Ray Center

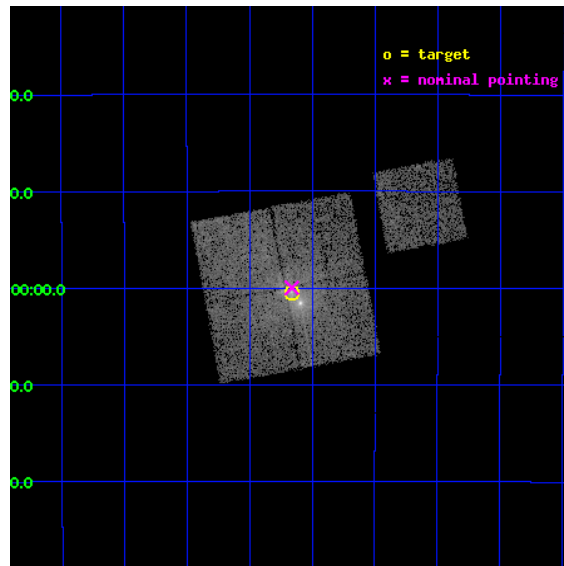
L2 Processing Date : Apr 24 2012

Contents

1	Front	2
2	OBI	3
2.1	OBI	3
2.1.1	Images	3
2.1.2	Bias	3
2.1.3	Parameters	4
2.1.4	Events	4
2.2	Compared Parameters	5
2.3	Aspect	6
2.4	Star Slots	9
2.4.1	Slot 3	9
2.4.2	Slot 4	10
2.4.3	Slot 5	11
2.4.4	Slot 6	12
2.4.5	Slot 7	13
2.5	FID Slots	14
2.5.1	Slot 0	14
2.5.2	Slot 1	15
2.5.3	Slot 2	16
A	Summary	17
A.1	Status	17
A.2	Comments	17

1 Front

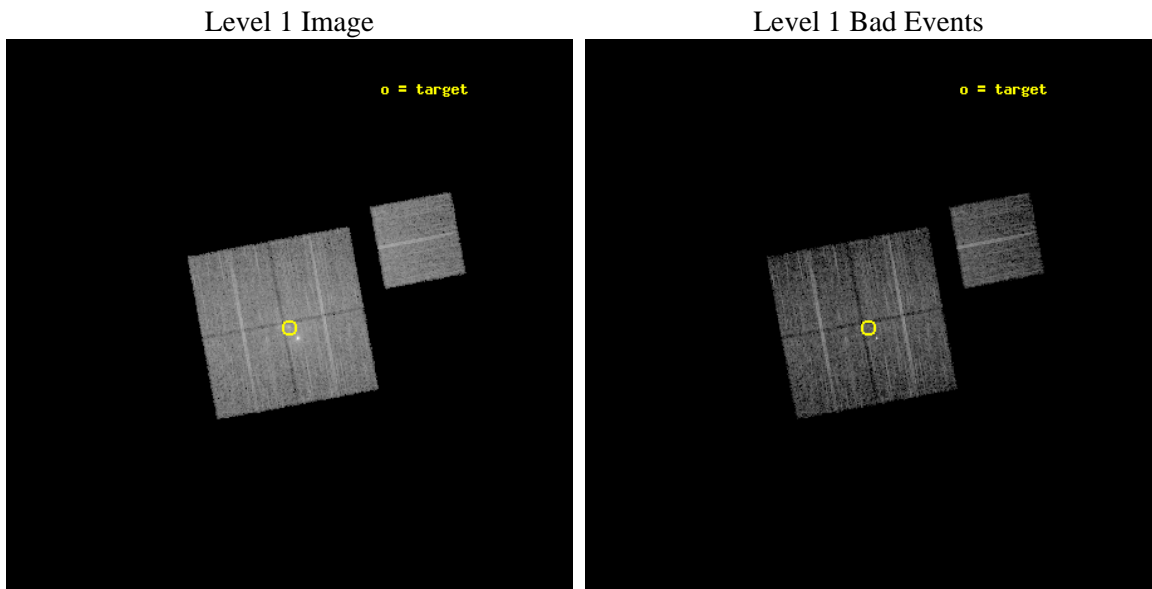
seq_num	400666	Sequence number
obs_id	7556	Observation id
title	Monitoring Faint X-ray Transients in the Galactic Center	Proposal
observer	Dr. Frederick Baganoff	Principal investigator
object	Sgr A*	Source name
dtcycle	0	
cycle	P	events from which exps? Prim/Second/Both
ra_targ	266.416667	Observer's specified target RA [deg]
dec_targ	-29.007778	Observer's specified target Dec [deg]
ra_nom	266.41555960864	Nominal RA [deg]
dec_nom	-28.999725729695	Nominal Dec [deg]
roll_nom	79.506490762895	Nominal Roll [deg]
revision	3	Processing version of data
ontime	5043.7000387907	Sum of GTIs [s]
livetime	4977.800384666	Livetime [s]
ontime0	5043.7000387907	Sum of GTIs [s]
ontime1	5043.7000387907	Sum of GTIs [s]
ontime2	5043.7000387907	Sum of GTIs [s]
ontime3	5043.7000387907	Sum of GTIs [s]
ontime6	5043.7000387907	Sum of GTIs [s]
l2events	53729	Number of level 2 events



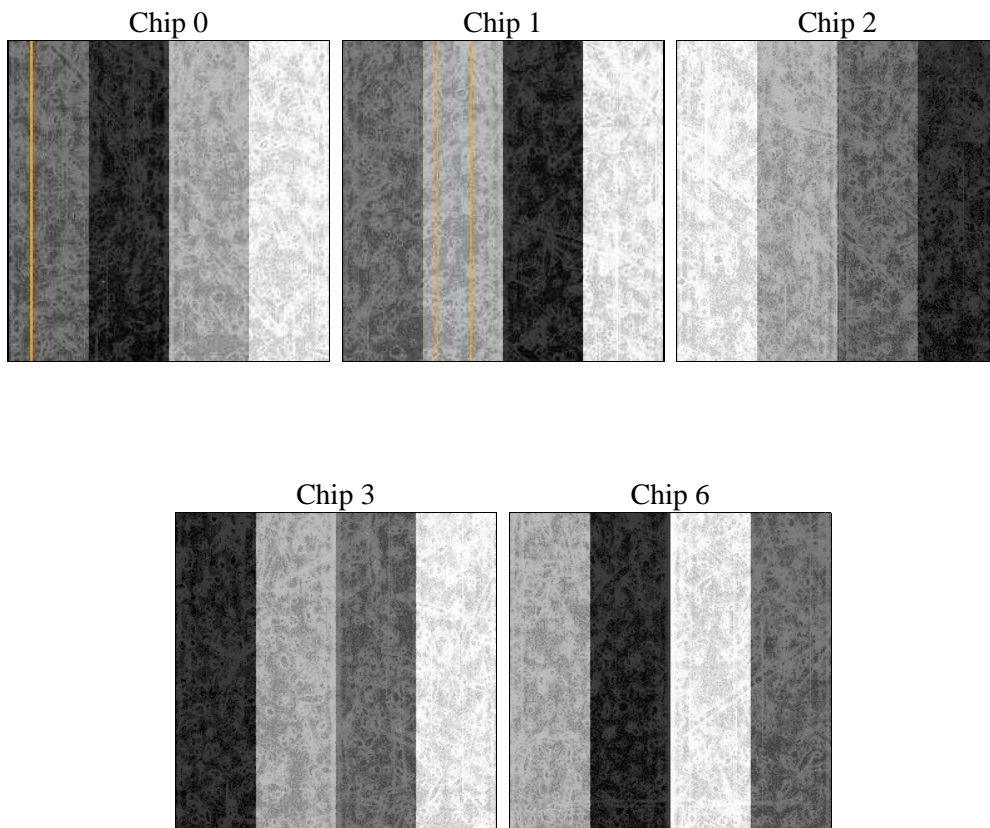
2 OBI

2.1 OBI

2.1.1 Images



2.1.2 Bias



2.1.3 Parameters

obi_num	0	Obi number	sched_exp_time	5000.000000	[s] Scheduled observation exposure time
ascdsver	8.4.4	Processing system revision	ontime	5043.7000387907	Sum of GTIs [s]
caldbver	4.4.9	 	ontime0	5043.7000387907	Sum of GTIs [s]
date	2012-04-24T21:09:40	Date and time of file creation	ontime1	5043.7000387907	Sum of GTIs [s]
revision	3	Processing version of data	ontime2	5043.7000387907	Sum of GTIs [s]
			ontime3	5043.7000387907	Sum of GTIs [s]
			ontime6	5043.7000387907	Sum of GTIs [s]
			l1events	275082	Number of level 1 events

2.1.4 Events

	ccd 0	ccd 1	ccd 2	ccd 3	ccd 6
level 1 events	54134	51480	56564	62651	50253
rejected events	40741	40192	46284	45242	43273
rejected %	75%	78%	81%	72%	86%

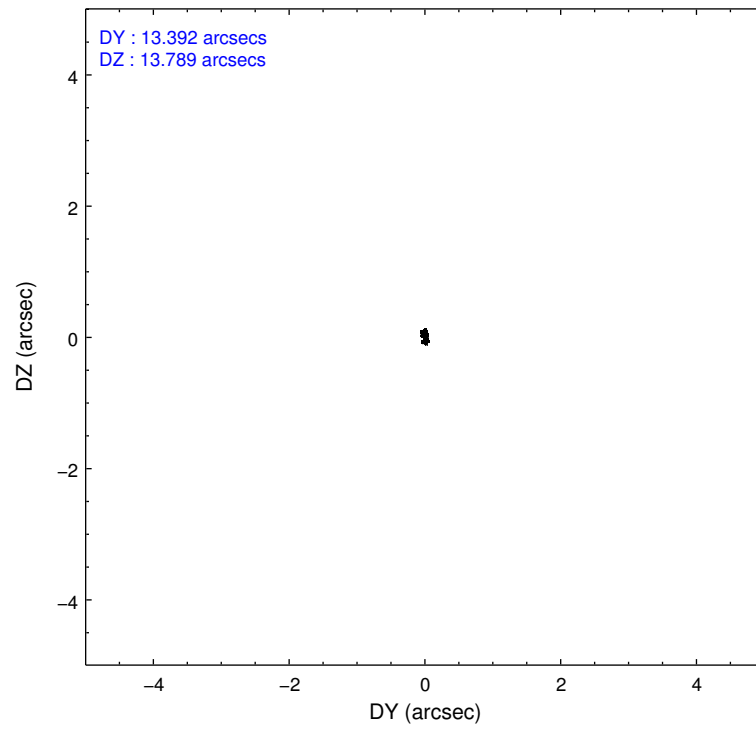
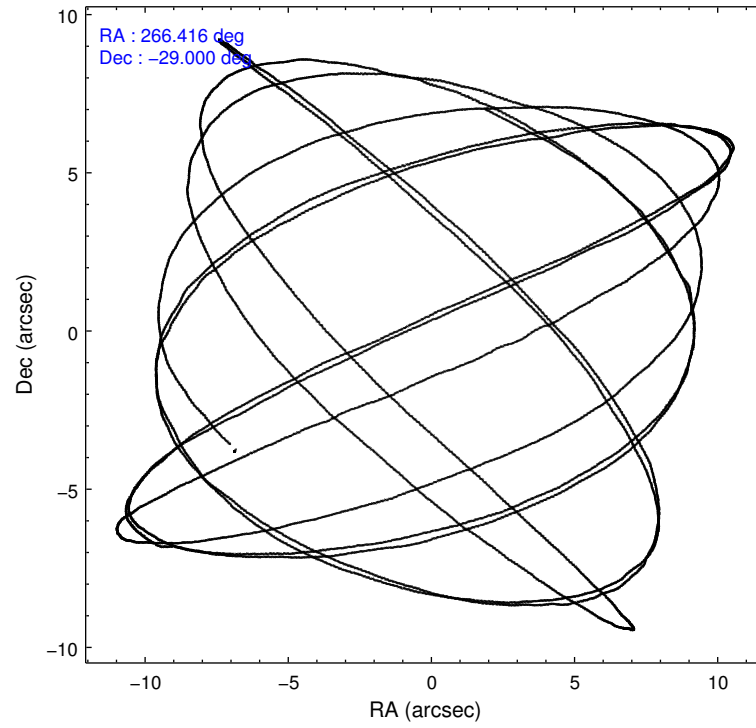
	ccd 0	ccd 1	ccd 2	ccd 3	ccd 6
grade 0 events	7640	5867	5593	10034	3029
	14%	11%	9%	16%	6%
grade 1 events	74	42	48	233	36
	0%	0%	0%	0%	0%
grade 2 events	2371	2177	1841	2903	1392
	4%	4%	3%	4%	2%
grade 3 events	939	840	769	1199	656
	1%	1%	1%	1%	1%
grade 4 events	861	834	784	1179	632
	1%	1%	1%	1%	1%
grade 5 events	2037	2190	2034	2602	2262
	3%	4%	3%	4%	4%
grade 6 events	1591	1578	1306	2108	1278
	2%	3%	2%	3%	2%
grade 7 events	38621	37952	44189	42393	40968
	71%	73%	78%	67%	81%

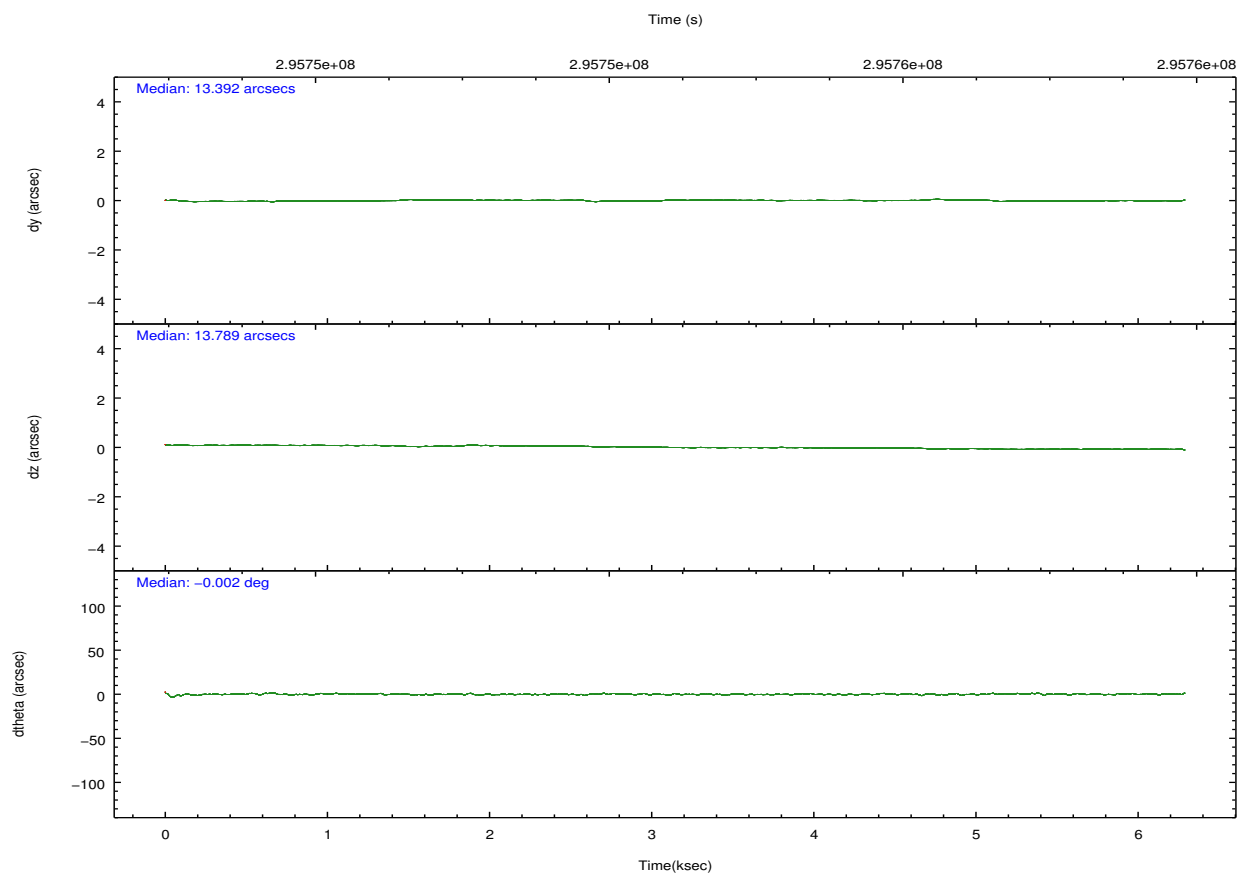
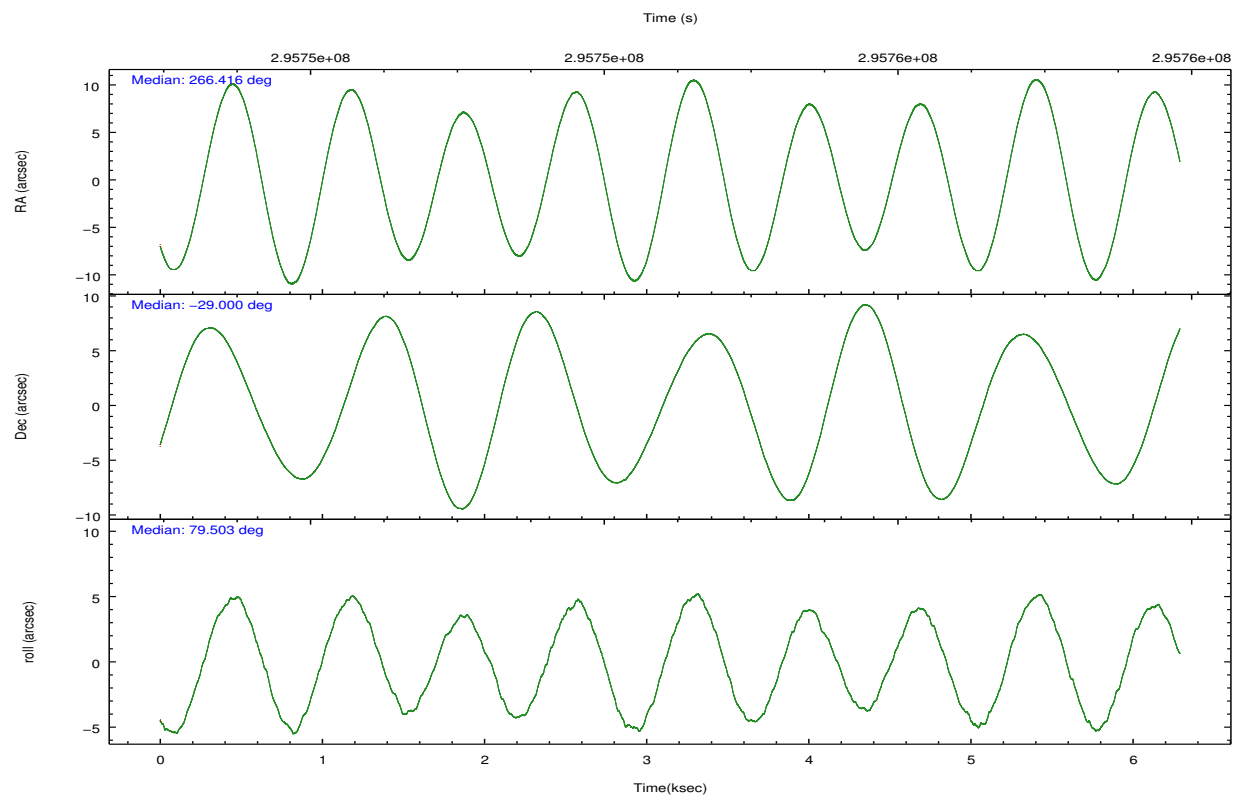
2.2 Compared Parameters

Parameter	Planned	Actual
Instrument	ACIS	ACIS
Detector	ACIS-01236	ACIS-01236
Grating	NONE	NONE
Data mode	FAINT	FAINT
Observation mode	POINTING	POINTING
[deg] Pointing RA	266.426198	266.4155596086382
[deg] Pointing Dec	-29.025636	-28.99972572969508
[deg] Pointing Roll	79.302959	79.50649076289506
[mm] SIM focus pos	-0.782348	-0.7809083437167272
[mm] SIM defocus	0	0.001439871863259334
[mm] SIM translation stage pos	-233.592463	-233.5874344608287
[mm] SIM translation stage offset	0	-0.005018542100998502
[s] Observation start time (MET)	295752586.184000	295751103.7891
Observation start date	2007-05-17T01:28:41	2007-05-17T01:05:03
[s] Observation end time (MET)	295757586.184000	295758823.06447
Observation end date	2007-05-17T02:52:01	2007-05-17T03:13:43
Read mode	TIMED	TIMED

Parameter	Planned	Actual
Obspar format version number	7	7
Obspar file type	PREDICTED	ACTUAL
Obspar update status	NONE	UPDATED
CCD I0 on	Y	Y
CCD I1 on	Y	Y
CCD I2 on	Y	Y
CCD I3 on	Y	Y
CCD S0 on	N	N
CCD S1 on	N	N
CCD S2 on	O1	Y
CCD S3 on	N	N
CCD S4 on	N	N
CCD S5 on	N	N
Number of optional ACIS chips dropped	0	0
On-chip summing requested	N	N
Subarray requested	NONE	NONE
Alternating exposures requested	N	N
[s] Primary exposure time	0.000000	3.1

2.3 Aspect



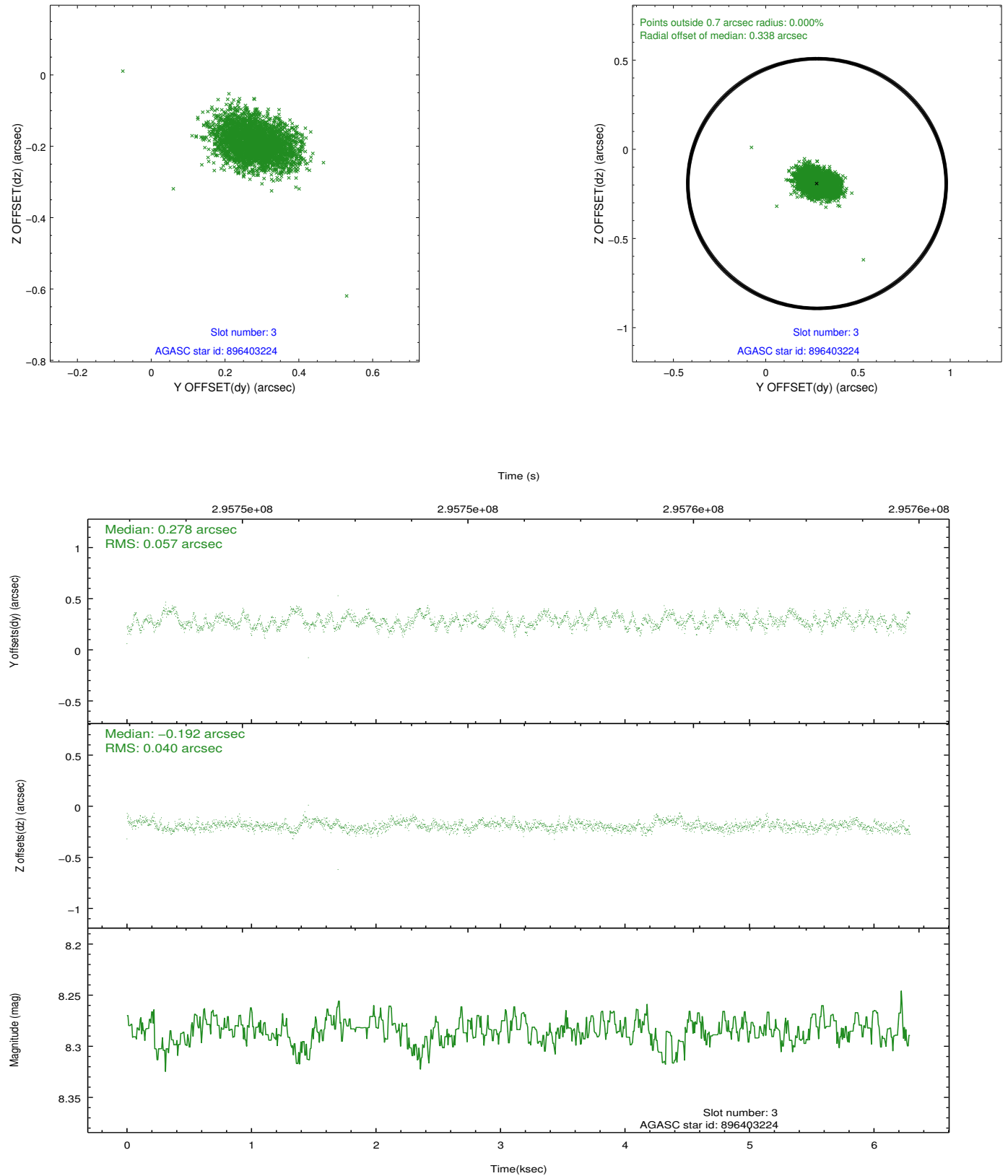


Slot Statistics

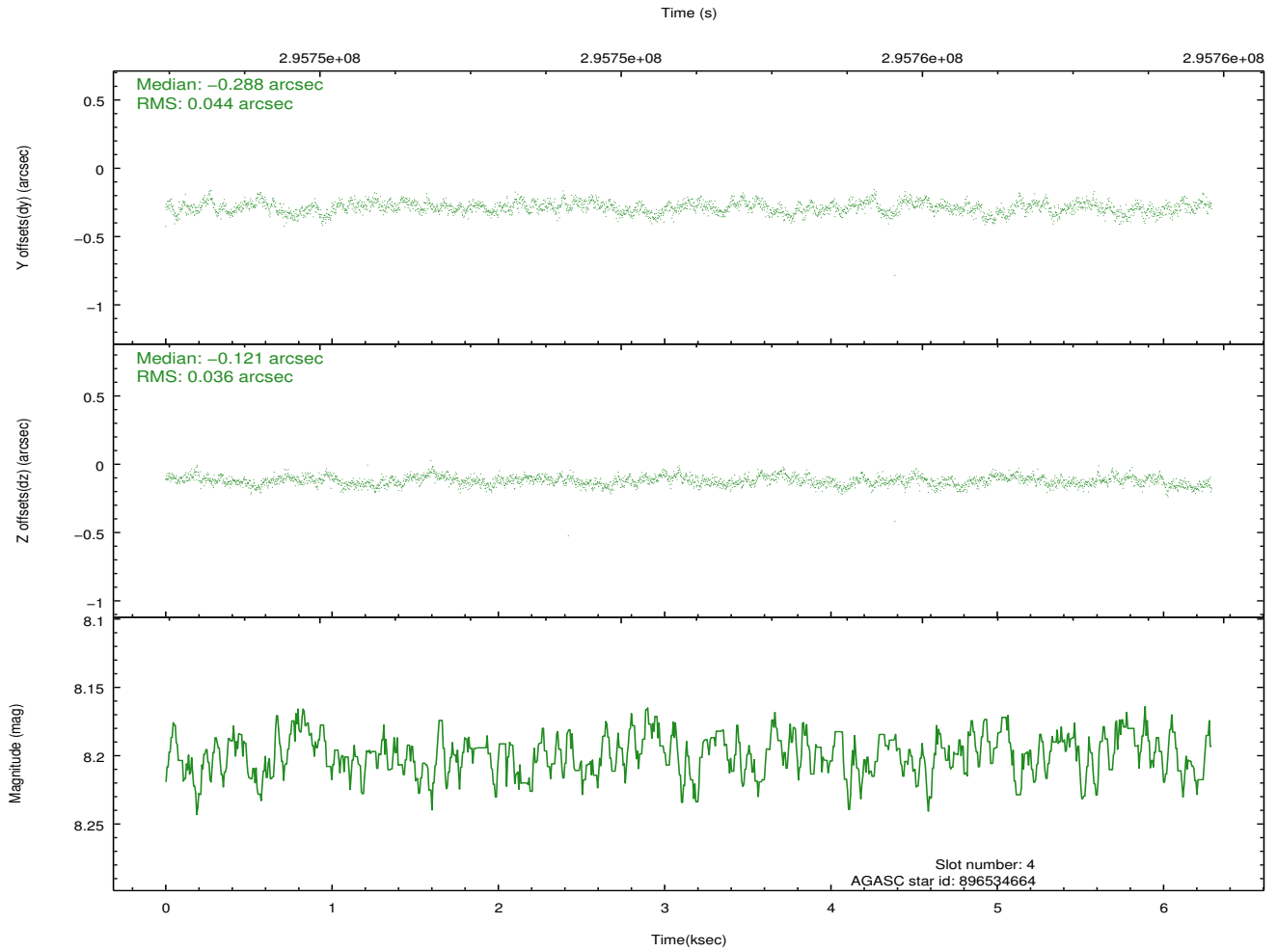
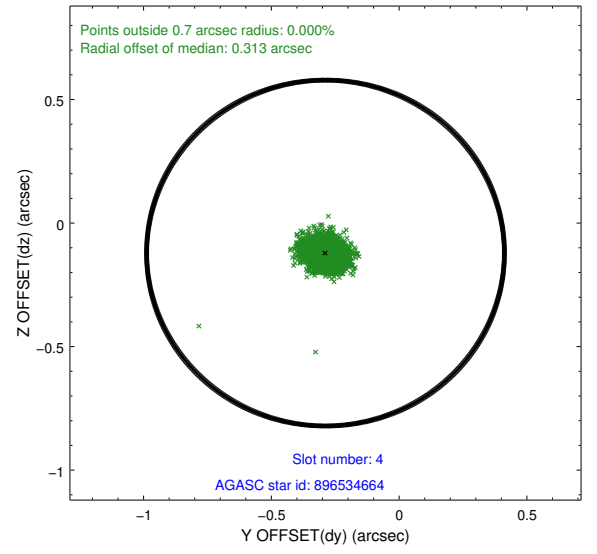
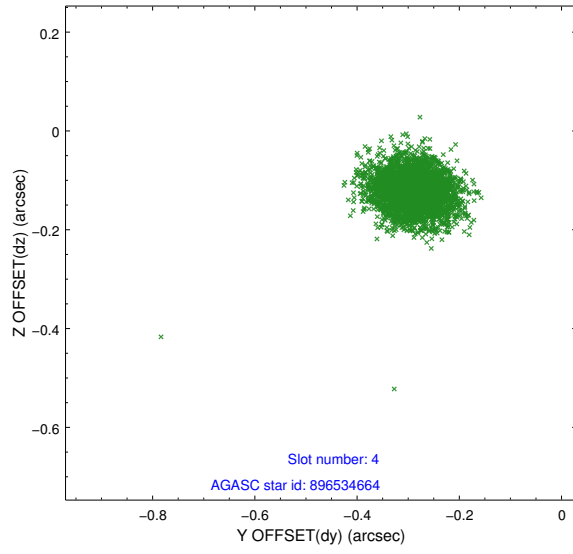
slot	status	id	mag	n_pts	med_dy	med_dz	dr1	dr2	ra	dec	mean_y	mean_z
0	FID	ACIS-I-1	7.23	1535	-0.013	0.026	0.008	0.015	0.000000	0.000000	926.09	-837.35
1	FID	ACIS-I-4	7.17	1535	0.212	0.011	0.008	0.013	0.000000	0.000000	2146.90	1061.96
2	FID	ACIS-I-5	7.22	1533	-0.298	0.033	0.007	0.013	0.000000	0.000000	-1820.97	1060.94
3	GUIDE	896403224	8.28	3069	0.278	-0.192	0.074	0.121	265.612825	-29.438915	-1944.04	2227.64
4	GUIDE	896534664	8.20	3066	-0.288	-0.121	0.059	0.096	266.405570	-28.407461	2173.68	478.05
5	GUIDE	896537776	7.53	3069	0.275	0.170	0.053	0.082	266.655684	-29.665673	-2130.50	-1133.04
6	GUIDE	896538696	6.86	3069	-0.286	-0.123	0.046	0.073	266.298470	-28.325572	2400.07	865.23
7	GUIDE	896538208	7.99	3068	0.013	0.270	0.082	0.120	267.176969	-28.671626	1686.07	-2094.36

2.4 Star Slots

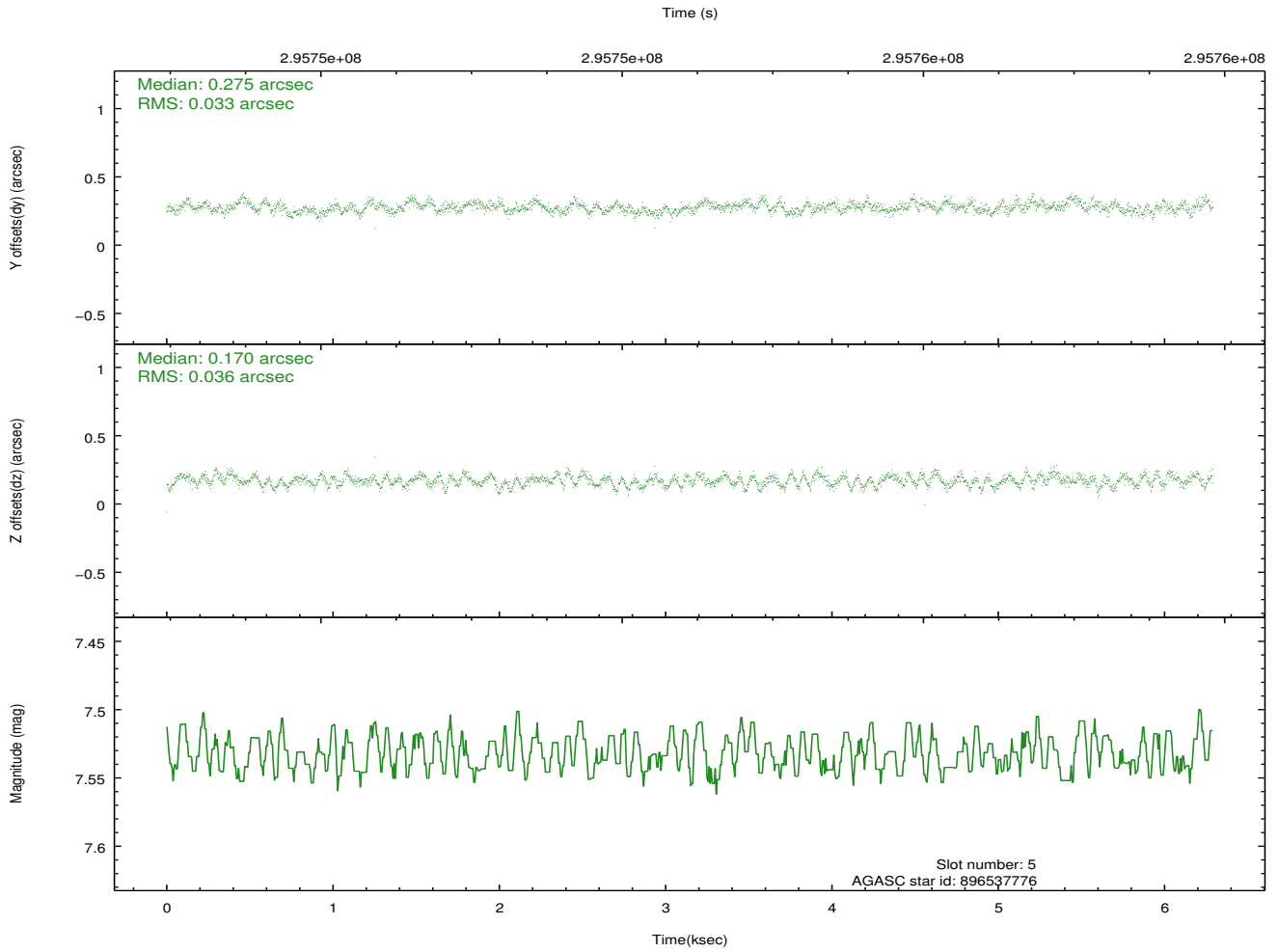
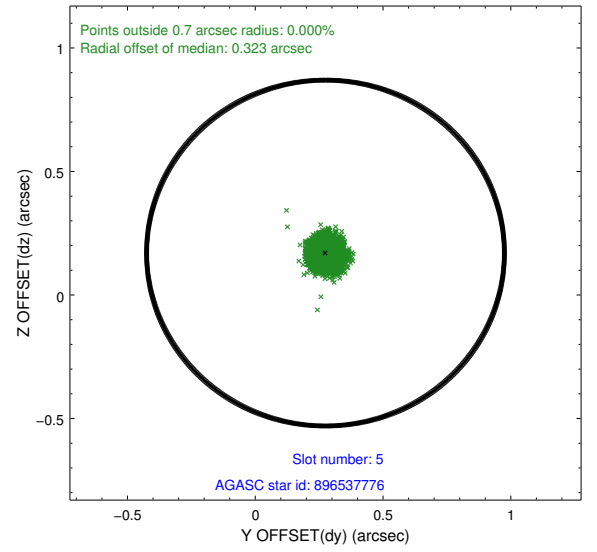
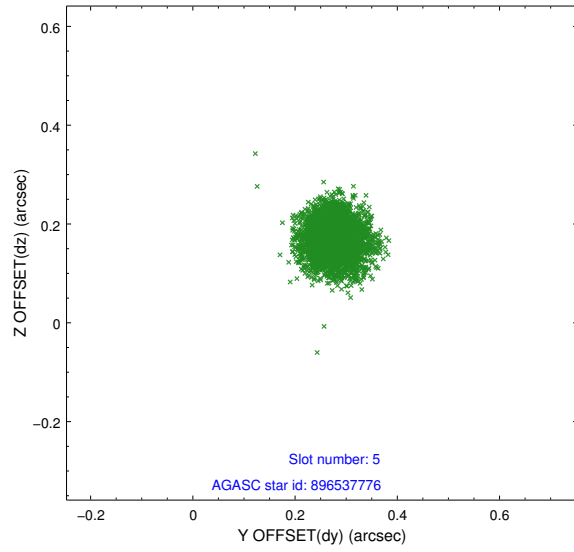
2.4.1 Slot 3



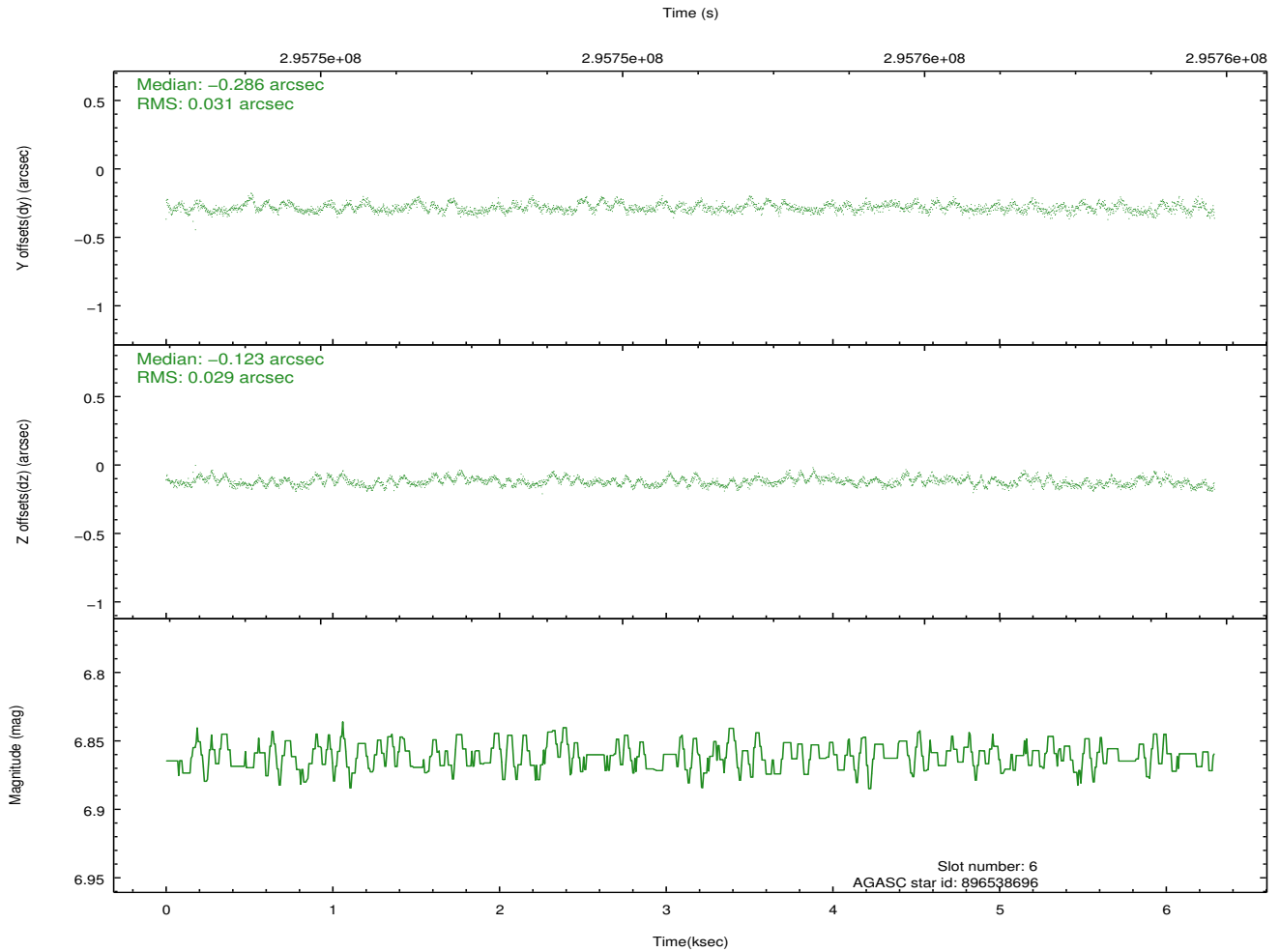
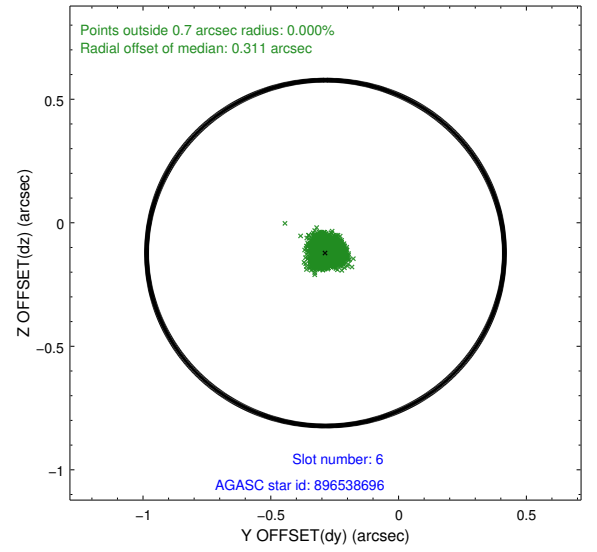
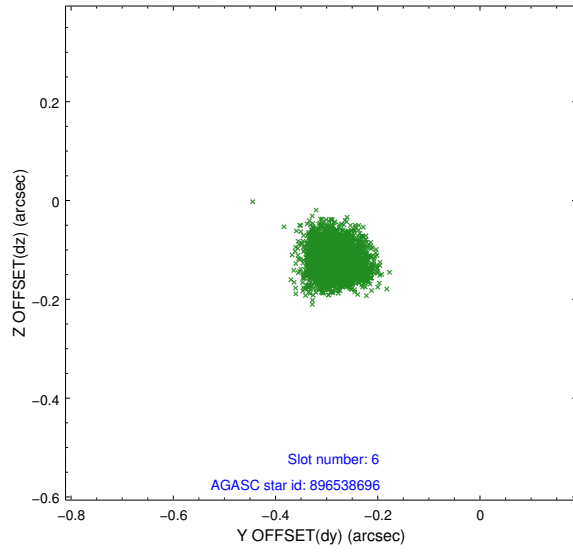
2.4.2 Slot 4



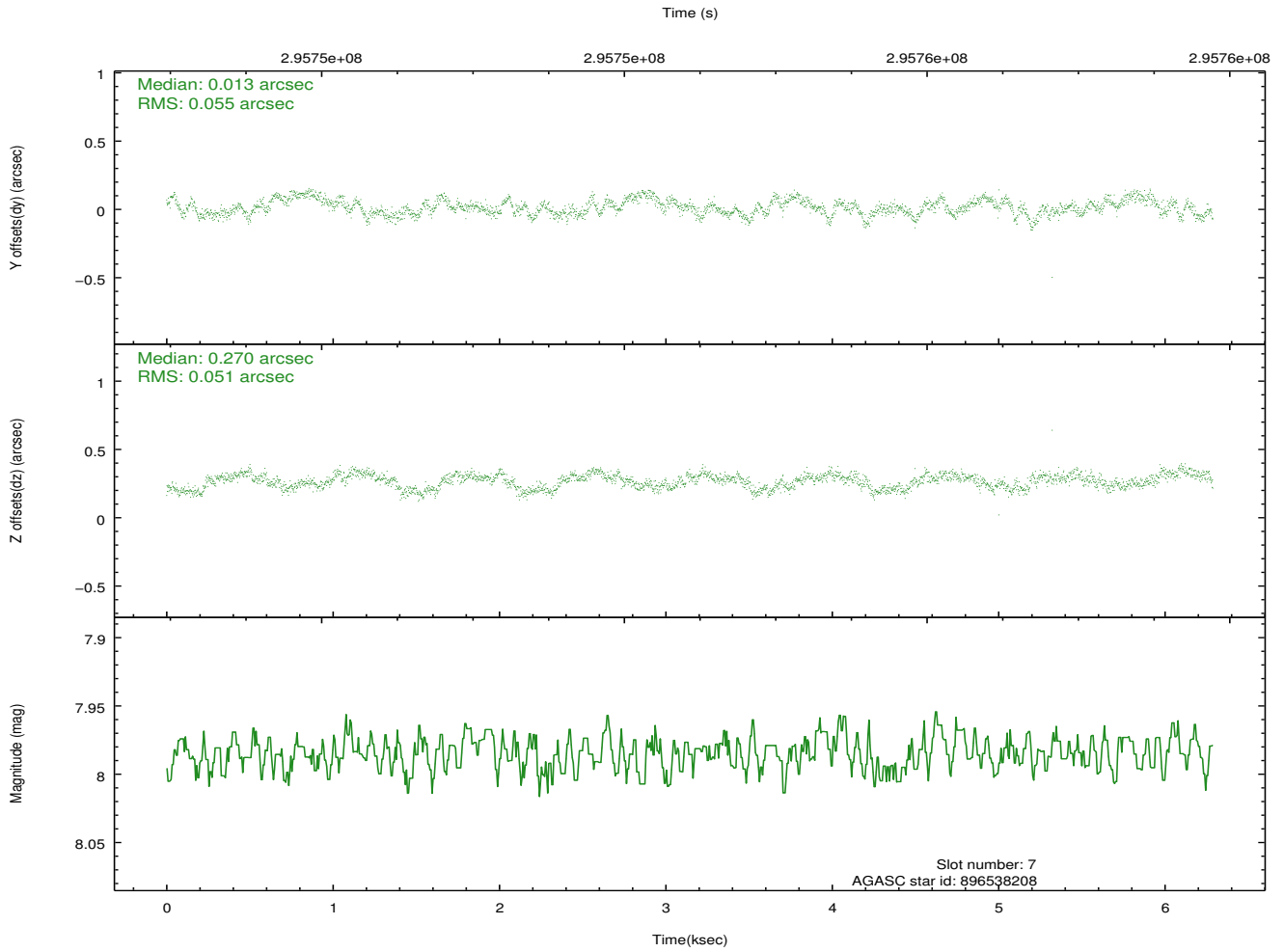
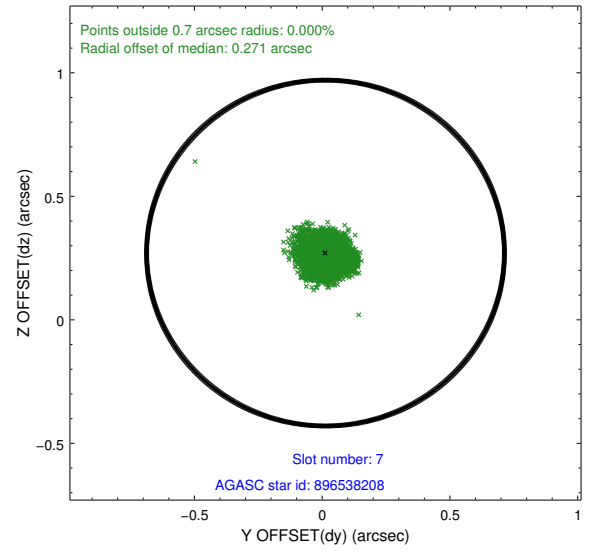
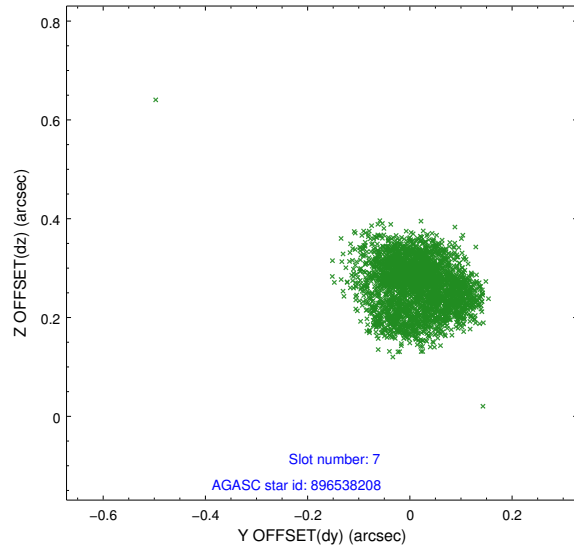
2.4.3 Slot 5



2.4.4 Slot 6

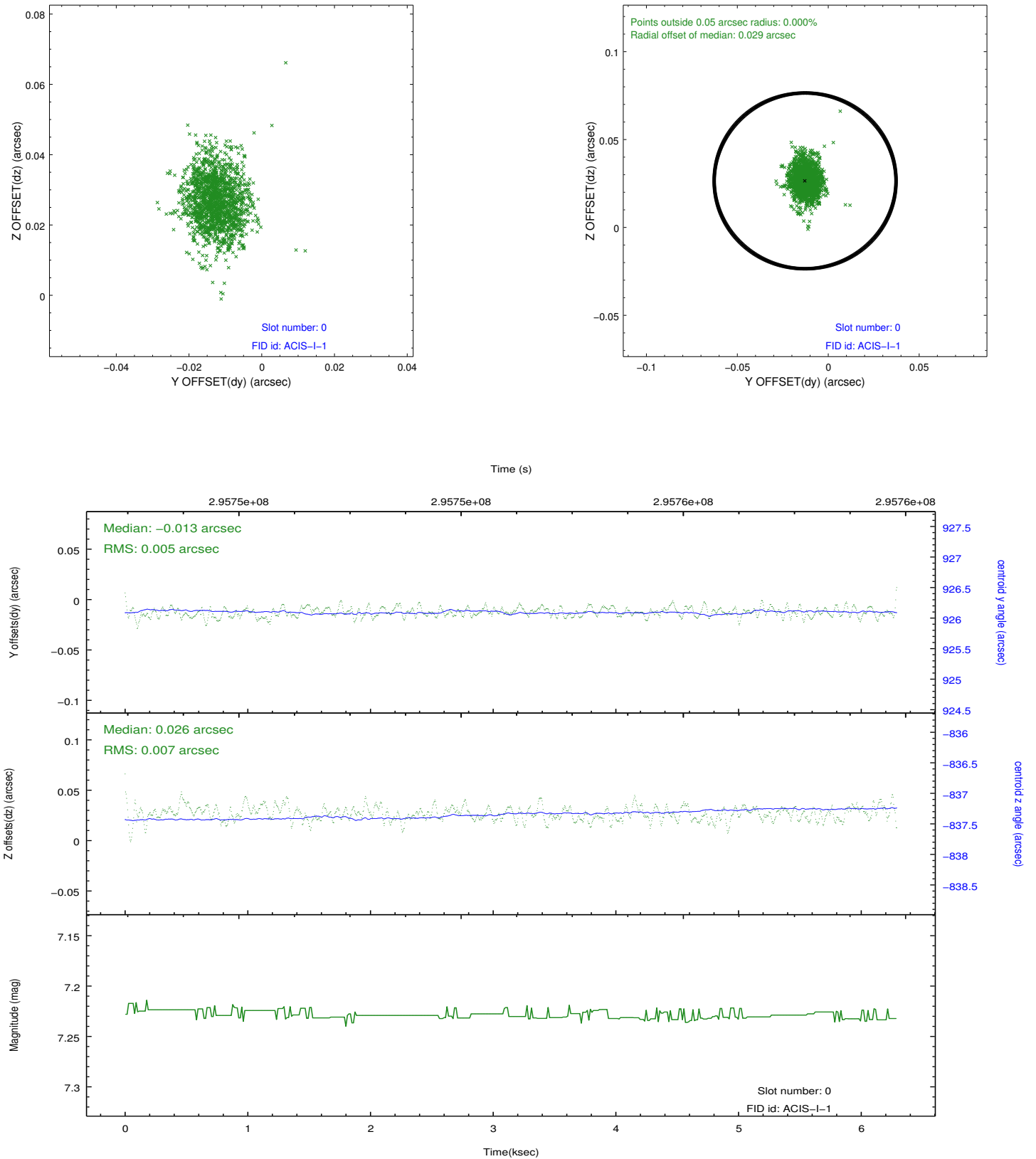


2.4.5 Slot 7

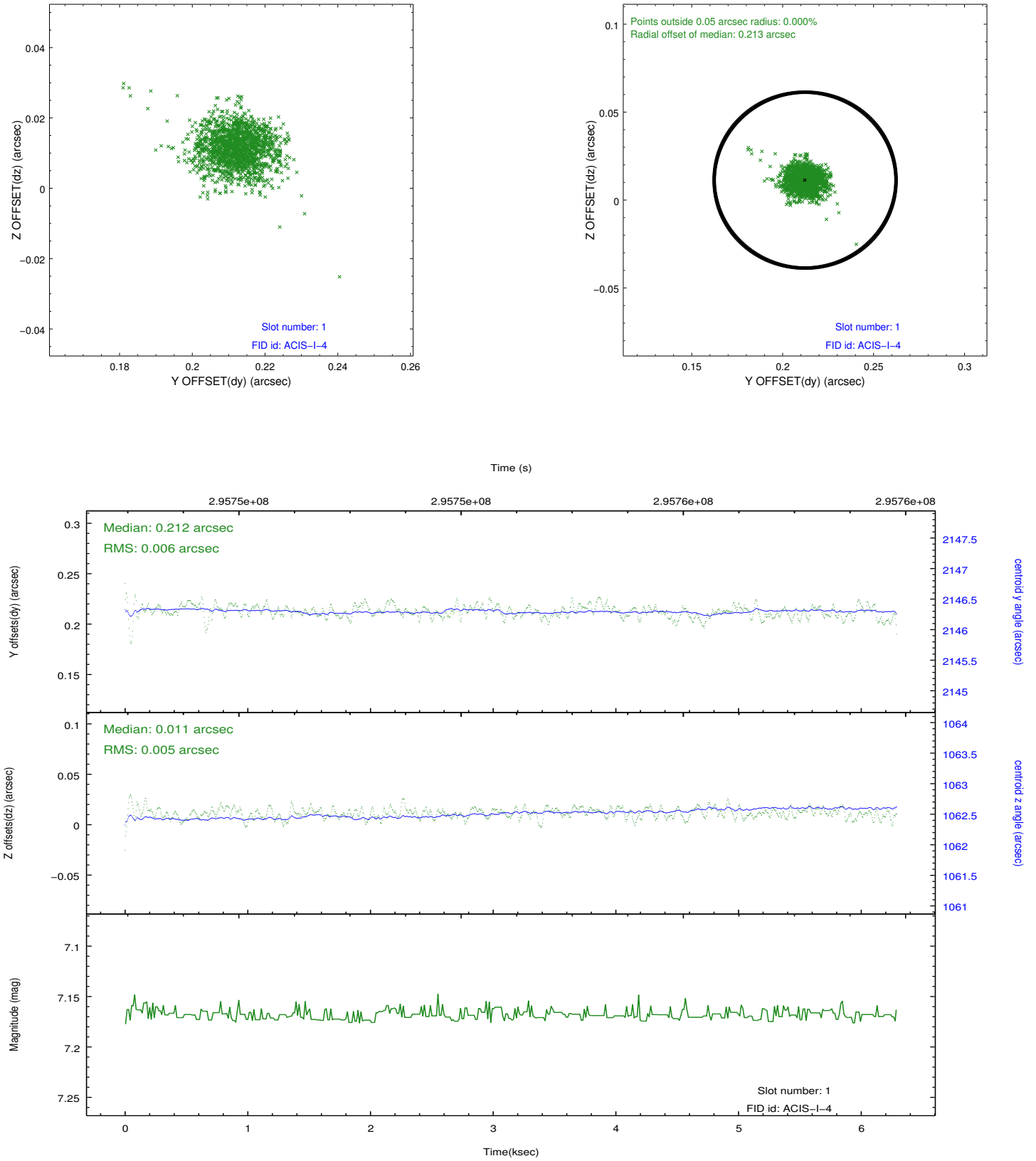


2.5 FID Slots

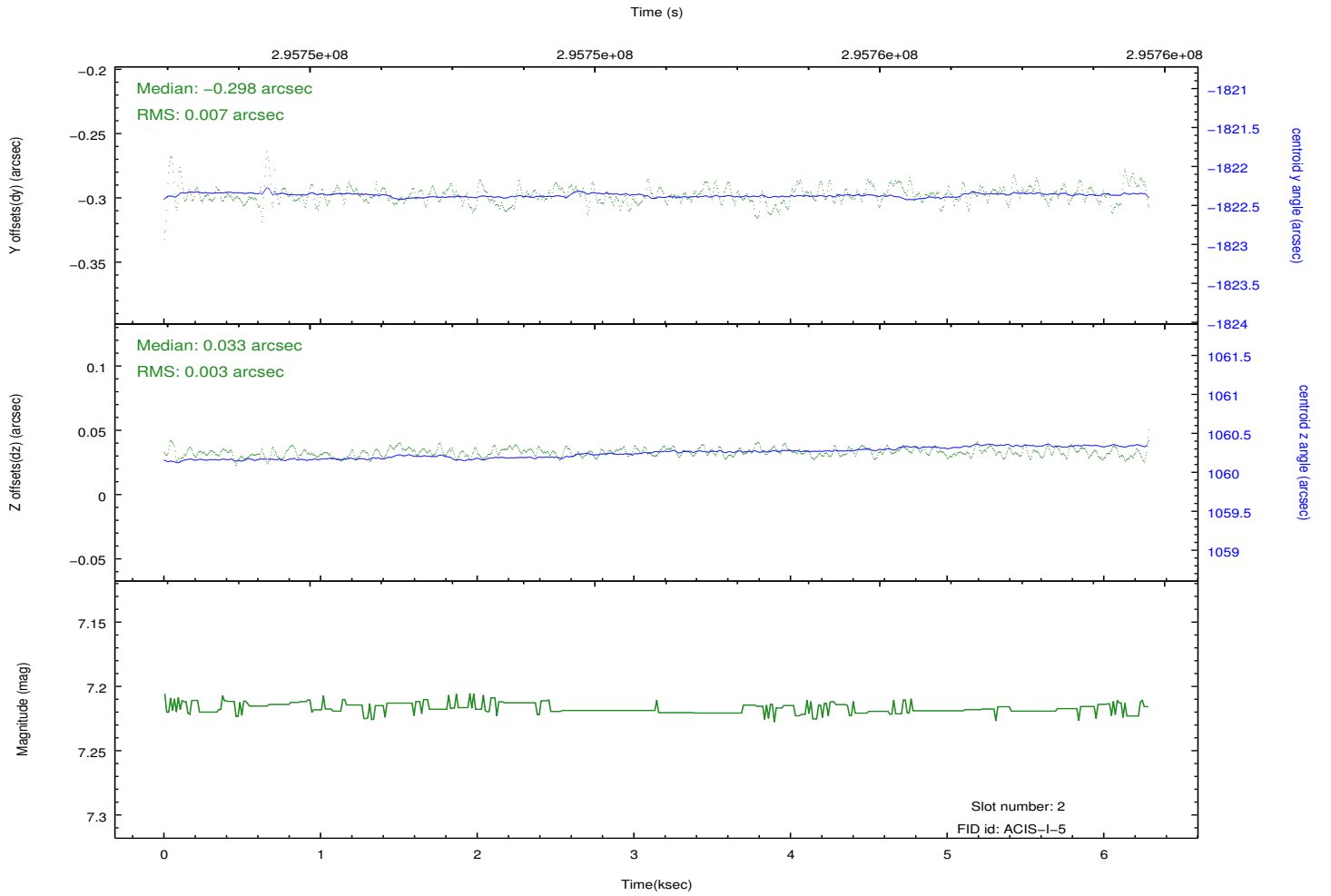
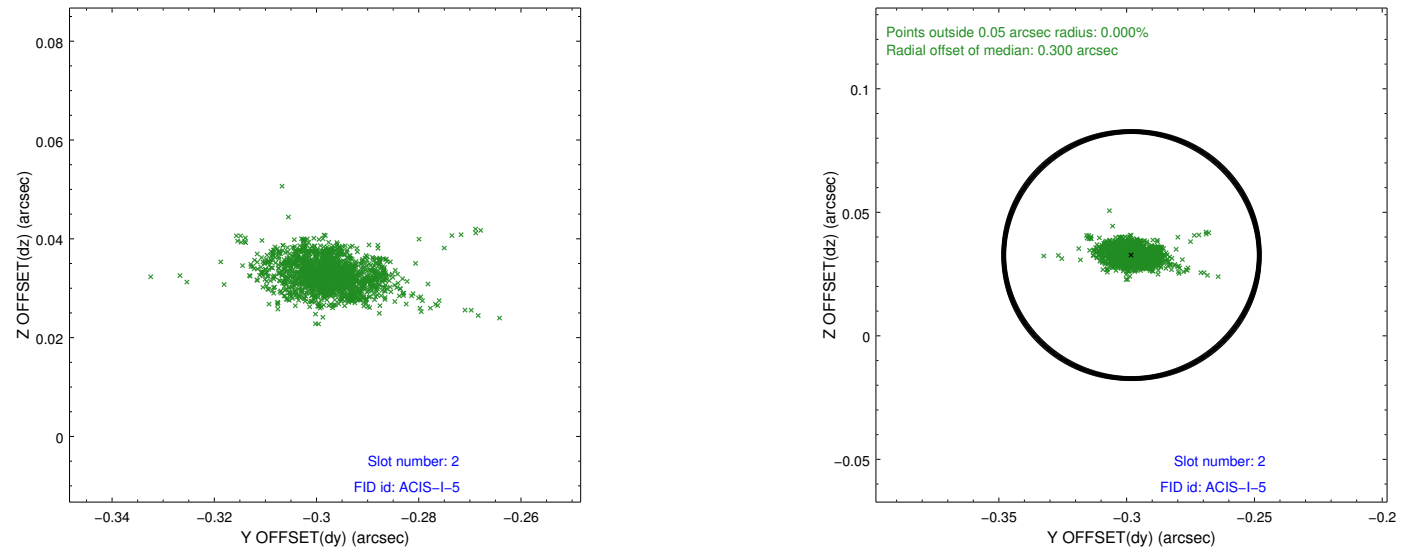
2.5.1 Slot 0



2.5.2 Slot 1



2.5.3 Slot 2



A Summary

A.1 Status

V&V Scientist	Jen Lauer
V&V Date (YYYY-MM-DD)	2012.04.25
V&V Edition	1
V&V Disposition and Status	OK
V&V Charge Time	5.04370003

A.2 Comments

Monitor constraint met.