

V&V Reference Report

L2 ASCDS Version : 8.4.3.1

Observation 7006 - L2 Version 2
Chandra X-Ray Center

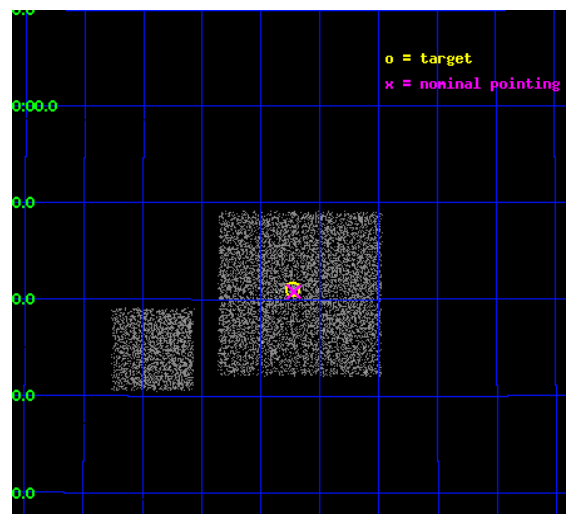
L2 Processing Date : Apr 7 2012

Contents

1	Front	2
2	OBI	3
2.1	OBI	3
2.1.1	Images	3
2.1.2	Bias	3
2.1.3	Parameters	4
2.1.4	Events	4
2.2	Compared Parameters	5
2.3	Aspect	6
2.4	Star Slots	9
2.4.1	Slot 3	9
2.4.2	Slot 4	10
2.4.3	Slot 5	11
2.4.4	Slot 6	12
2.4.5	Slot 7	13
2.5	FID Slots	14
2.5.1	Slot 0	14
2.5.2	Slot 1	15
2.5.3	Slot 2	16
A	Summary	17
A.1	Status	17
A.2	Comments	17

1 Front

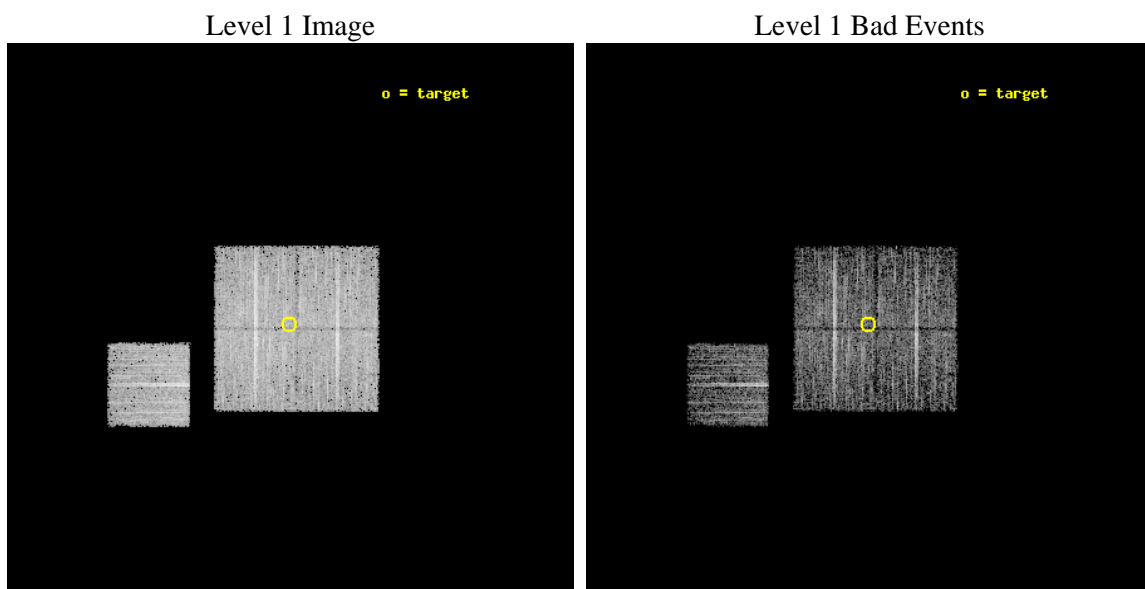
seq_num	900422	Sequence number
obs_id	7006	Observation id
title	Chandra Large Scale Survey of the NOAO Bootes Deep Field (A)	Propo
observer	Dr Stephen Murray	Principal investigator
object	Bootes2 28	Source name
dtcycle	0	
cycle	P	events from which exps? Prim/Second/Both
ra_targ	217.80709	Observer's specified target RA [deg]
dec_targ	34.68425	Observer's specified target Dec [deg]
ra_nom	217.80488961158	Nominal RA [deg]
dec_nom	34.679904966301	Nominal Dec [deg]
roll_nom	270.20993795957	Nominal Roll [deg]
revision	2	Processing version of data
ontime	4475.9853577614	Sum of GTIs [s]
livetime	4417.5033138897	Livetime [s]
ontime0	4472.7212674022	Sum of GTIs [s]
ontime1	4475.9032777548	Sum of GTIs [s]
ontime2	4475.9443177581	Sum of GTIs [s]
ontime3	4475.9853577614	Sum of GTIs [s]
ontime6	4475.8211977482	Sum of GTIs [s]
l2events	12923	Number of level 2 events



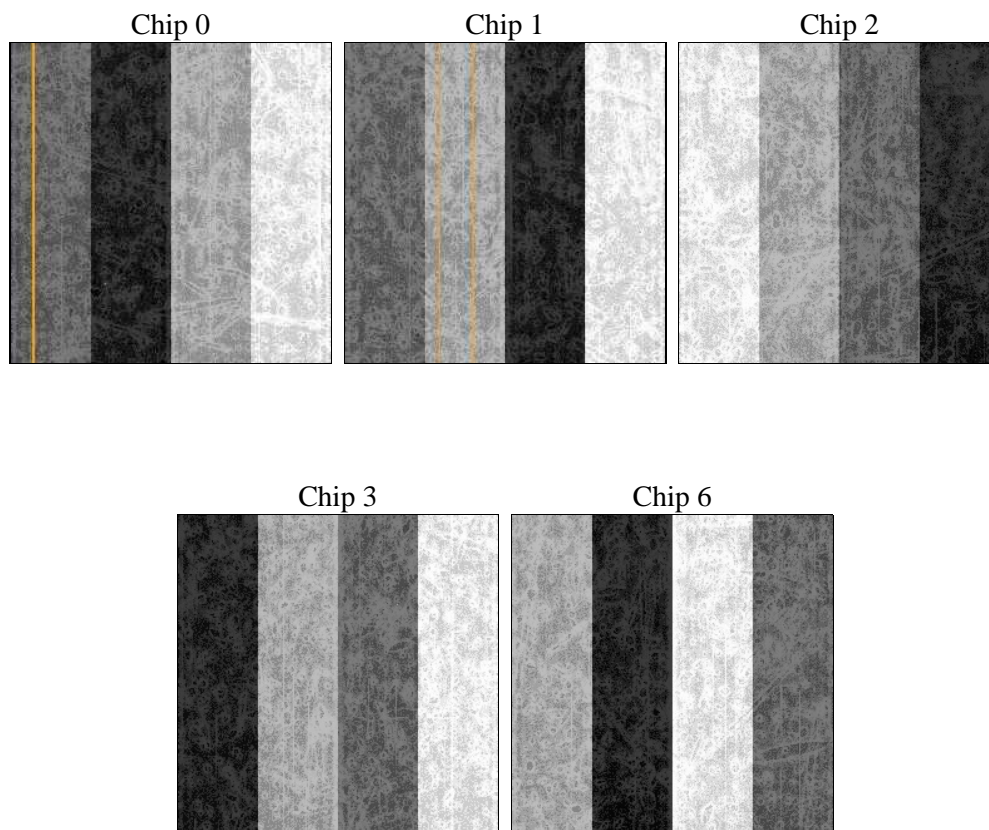
2 OBI

2.1 OBI

2.1.1 Images



2.1.2 Bias



2.1.3 Parameters

obi_num	0	Obi number	sched_exp_time	4700.000000	[s] Scheduled observation exposure time
ascdsver	8.4.3.1	Processing system revision	ontime	4475.9853577614	Sum of GTIs [s]
caldsver	4.4.9	 	ontime0	4472.7212674022	Sum of GTIs [s]
date	2012-04-07T09:06:23	Date and time of file creation	ontime1	4475.9032777548	Sum of GTIs [s]
revision	2	Processing version of data	ontime2	4475.9443177581	Sum of GTIs [s]
			ontime3	4475.9853577614	Sum of GTIs [s]
			ontime6	4475.8211977482	Sum of GTIs [s]
			l1events	162298	Number of level 1 events

2.1.4 Events

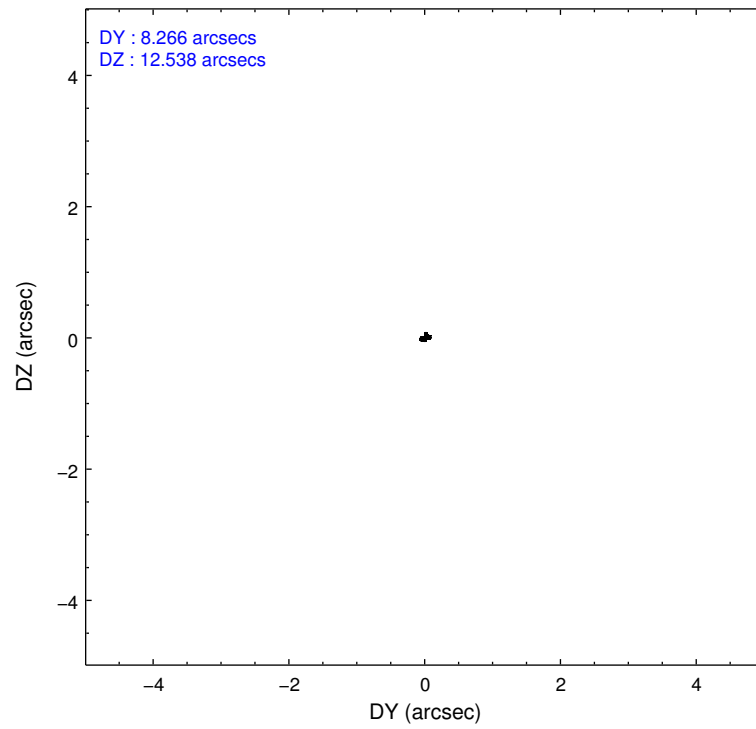
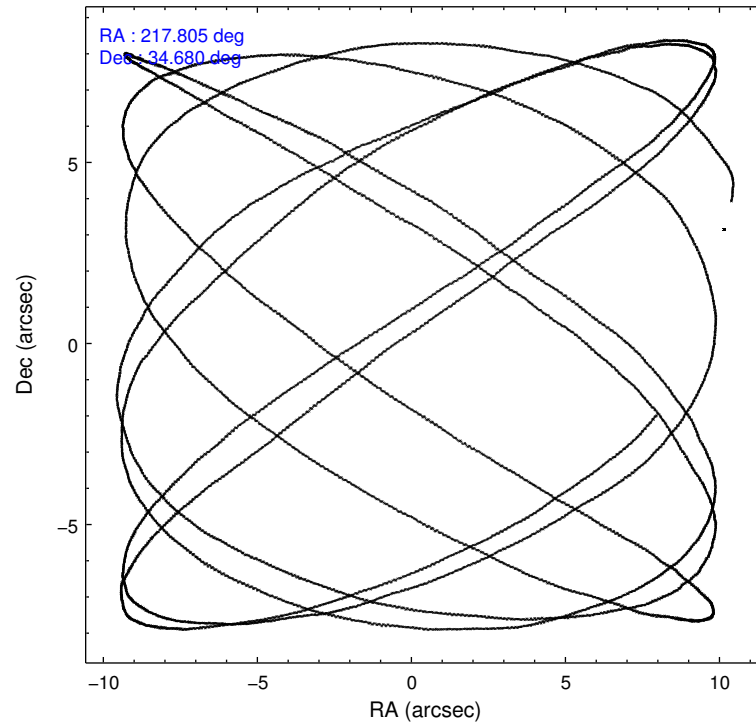
	ccd 0	ccd 1	ccd 2	ccd 3	ccd 6
level 1 events	30793	31246	34940	33014	32305
rejected events	27681	27892	31694	30125	29126
rejected %	89%	89%	90%	91%	90%

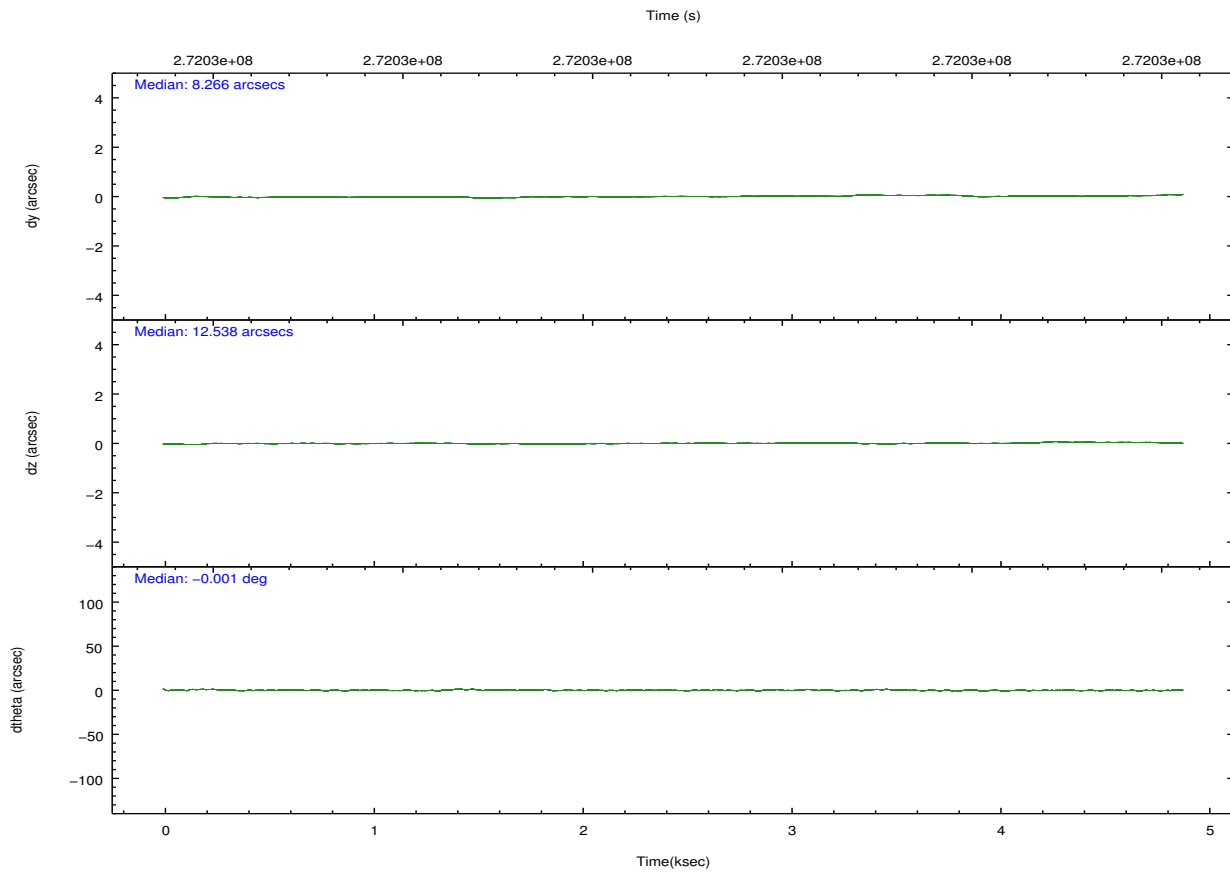
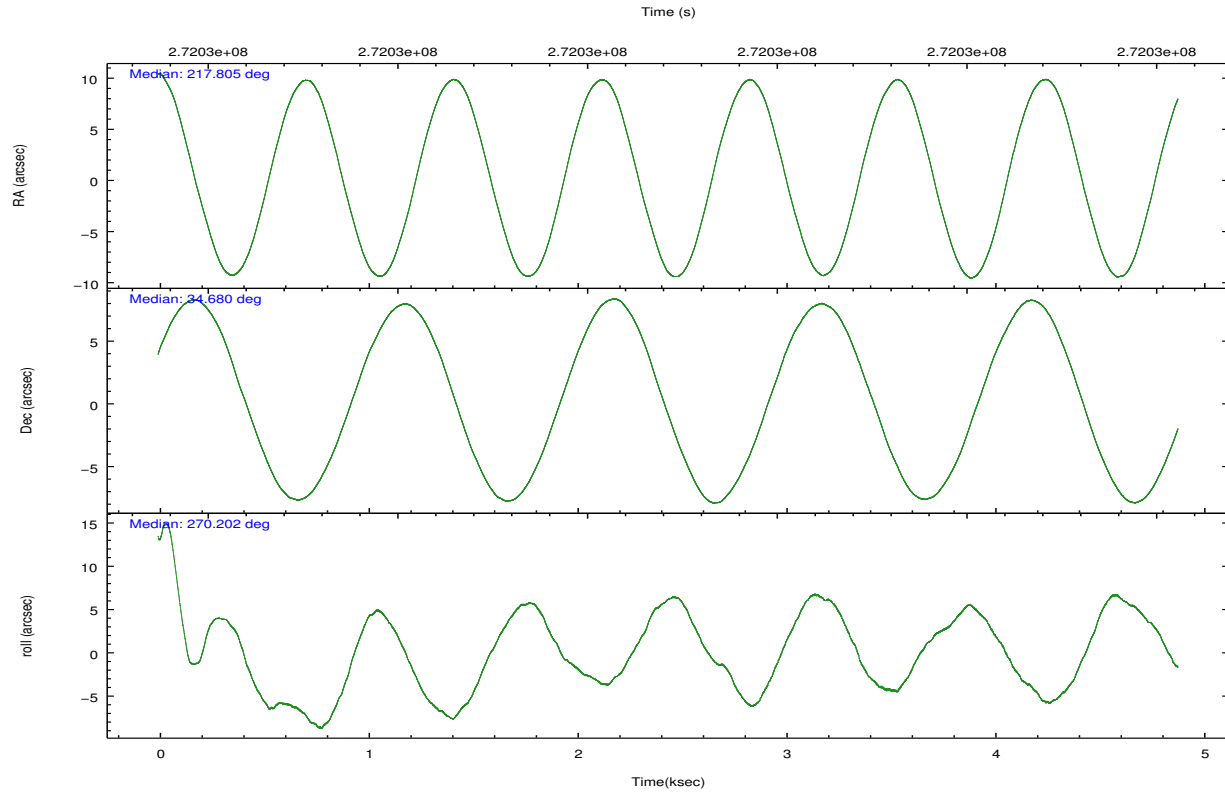
	ccd 0	ccd 1	ccd 2	ccd 3	ccd 6
grade 0 events	1129	1160	1268	1085	1123
	3%	3%	3%	3%	3%
grade 1 events	15	17	28	20	21
	0%	0%	0%	0%	0%
grade 2 events	736	755	778	650	695
	2%	2%	2%	1%	2%
grade 3 events	371	398	330	329	358
	1%	1%	0%	0%	1%
grade 4 events	343	370	336	305	345
	1%	1%	0%	0%	1%
grade 5 events	992	1074	880	1089	1064
	3%	3%	2%	3%	3%
grade 6 events	536	676	538	523	667
	1%	2%	1%	1%	2%
grade 7 events	26671	26796	30782	29013	28032
	86%	85%	88%	87%	86%

2.2 Compared Parameters

Parameter	Planned	Actual	Parameter	Planned	Actual
Instrument	ACIS	ACIS	Obspar format version number	7	7
Detector	ACIS-01236	ACIS-01236	Obspar file type	PREDICTED	ACTUAL
Grating	NONE	NONE	Obspar update status	NONE	UPDATED
Data mode	VFAINT	VFAINT	Number of optional ACIS chips dropped	0	0
Observation mode	POINTING	POINTING	On-chip summing requested	N	N
[deg] Pointing RA	217.788042	217.8048896115761	Subarray requested	NONE	NONE
[deg] Pointing Dec	34.703527	34.67990496630137	Alternating exposures requested	N	N
[deg] Pointing Roll	270.010846	270.2099379595678	[s] Primary exposure time	0.000000	3.1
[mm] SIM focus pos	-0.782348	-0.7809083437167272			
[mm] SIM defocus	0	0.001439871863259334			
[mm] SIM translation stage pos	-233.592463	-233.5874344608287			
[mm] SIM translation stage offset	0	-0.005018542100998502			
[s] Observation start time (MET)	272029163.184000	272028787.61572			
Observation start date	2006-08-15T11:38:18	2006-08-15T11:33:07			
[s] Observation end time (MET)	272033863.184000	272033997.69097			
Observation end date	2006-08-15T12:56:38	2006-08-15T12:59:57			
Read mode	TIMED	TIMED			

2.3 Aspect



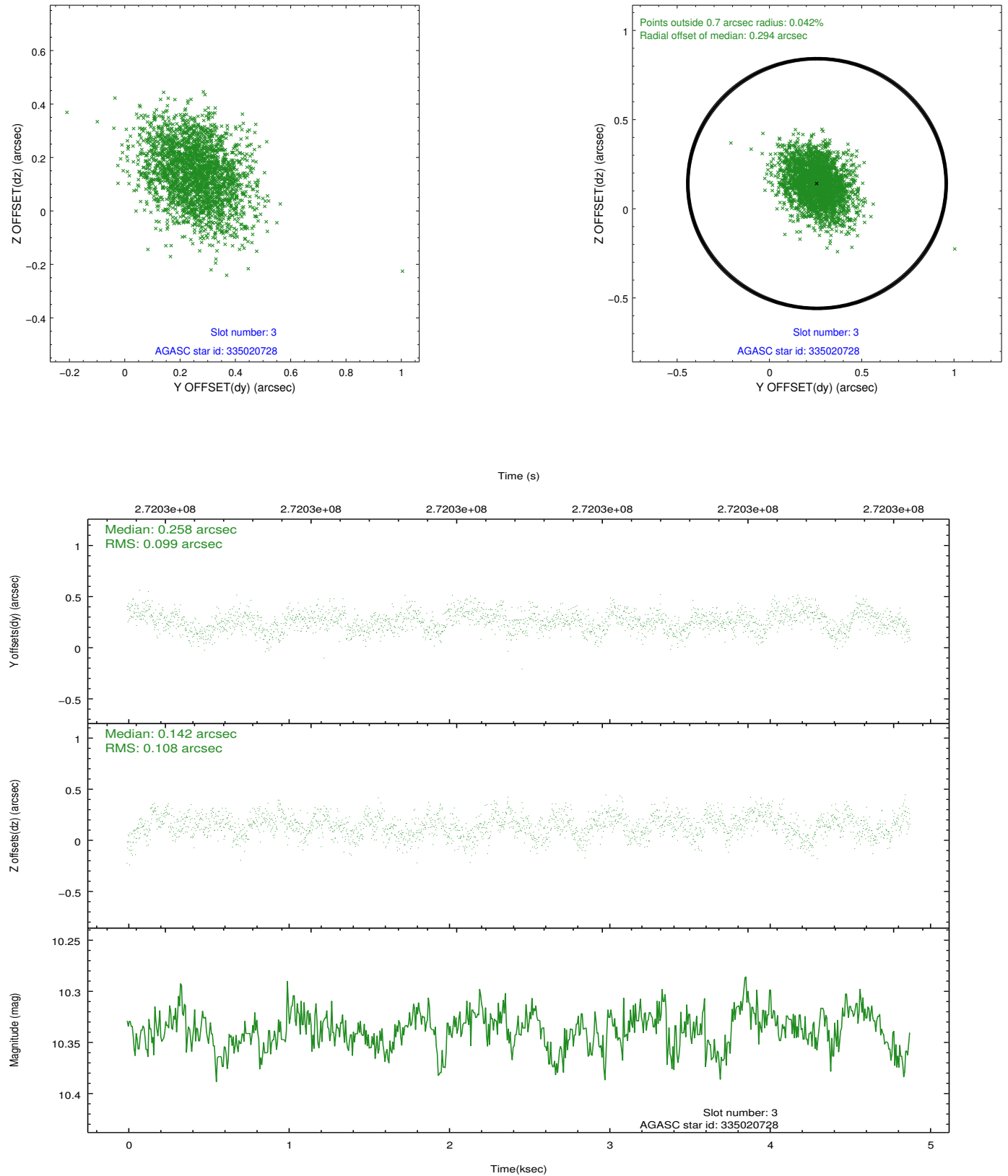


Slot Statistics

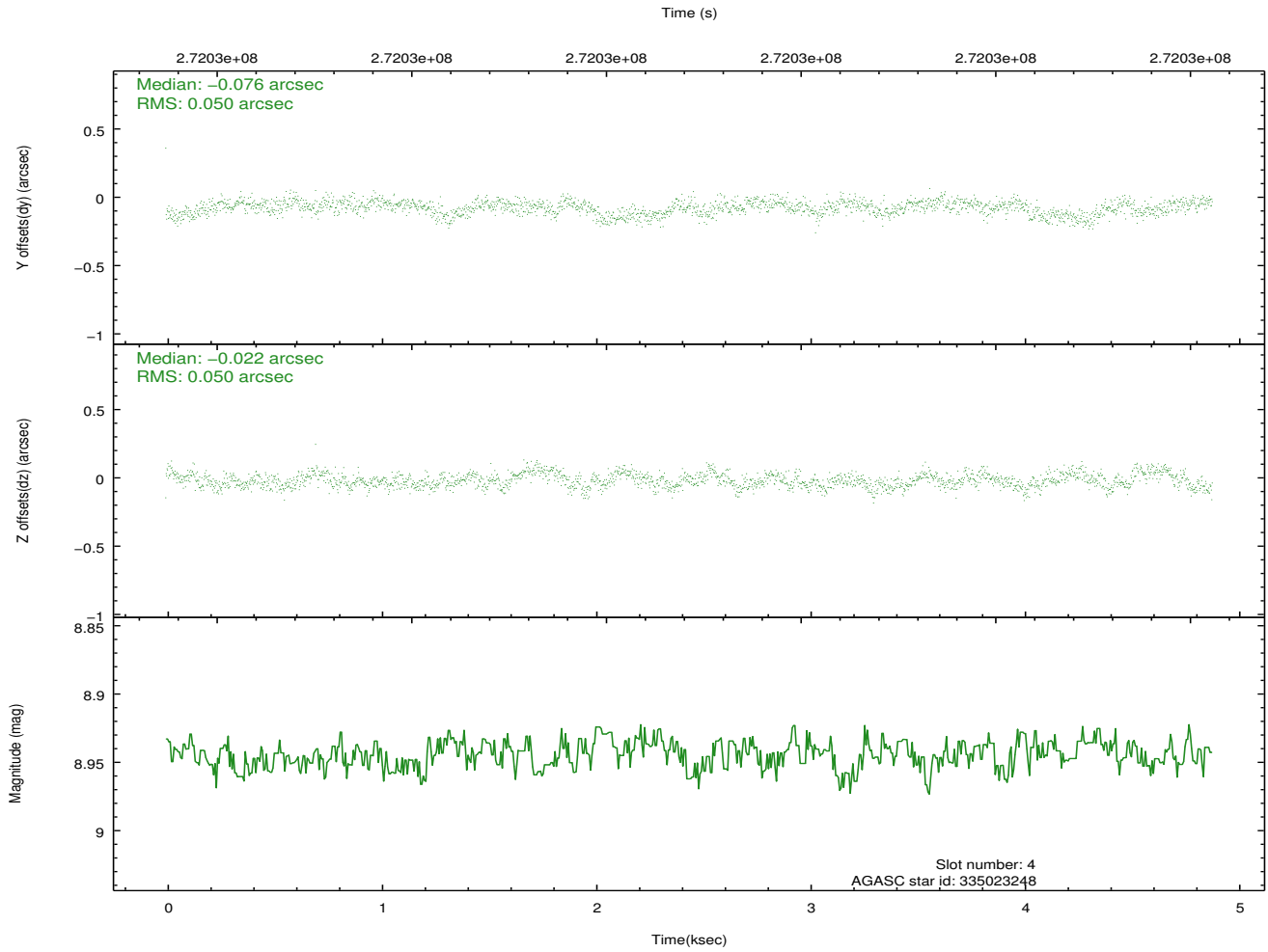
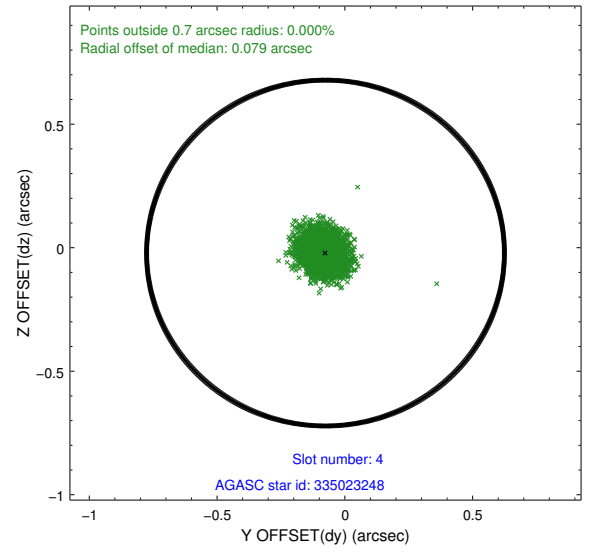
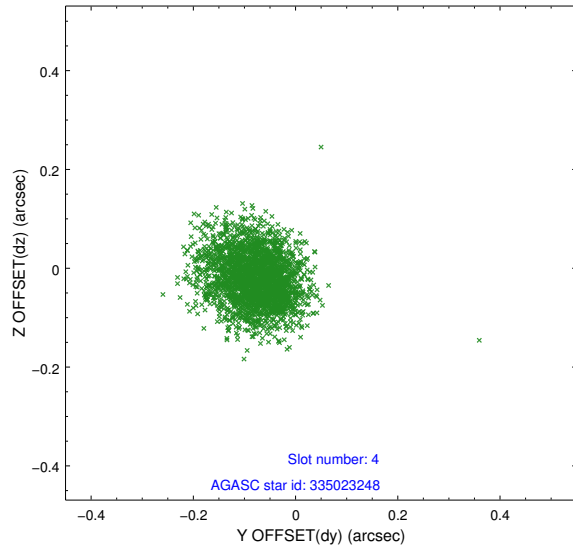
slot	status	id	mag	n_pts	med_dy	med_dz	dr1	dr2	ra	dec	mean_y	mean_z
0	FID	ACIS-I-1	7.24	1190	0.044	-0.018	0.006	0.013	0.000000	0.000000	931.41	-836.10
1	FID	ACIS-I-5	7.23	1190	-0.177	0.058	0.006	0.010	0.000000	0.000000	-1816.20	1060.86
2	FID	ACIS-I-6	7.24	1190	0.041	0.030	0.007	0.012	0.000000	0.000000	395.62	1706.73
3	GUIDE	335020728	10.34	2379	0.258	0.142	0.155	0.253	217.586522	34.733044	-106.08	-595.91
4	GUIDE	335023248	8.94	2380	-0.076	-0.022	0.075	0.122	217.634832	34.944512	-867.76	-451.88
5	GUIDE	335028336	9.46	2366	-0.098	0.025	0.093	0.150	217.189840	34.665629	130.93	-1770.95
6	GUIDE	335415168	9.80	2375	-0.062	0.111	0.115	0.198	217.681296	35.301767	-2153.71	-314.56
7	GUIDE	335417968	9.38	2380	-0.019	-0.251	0.107	0.172	217.358149	35.055285	-1269.76	-1266.75

2.4 Star Slots

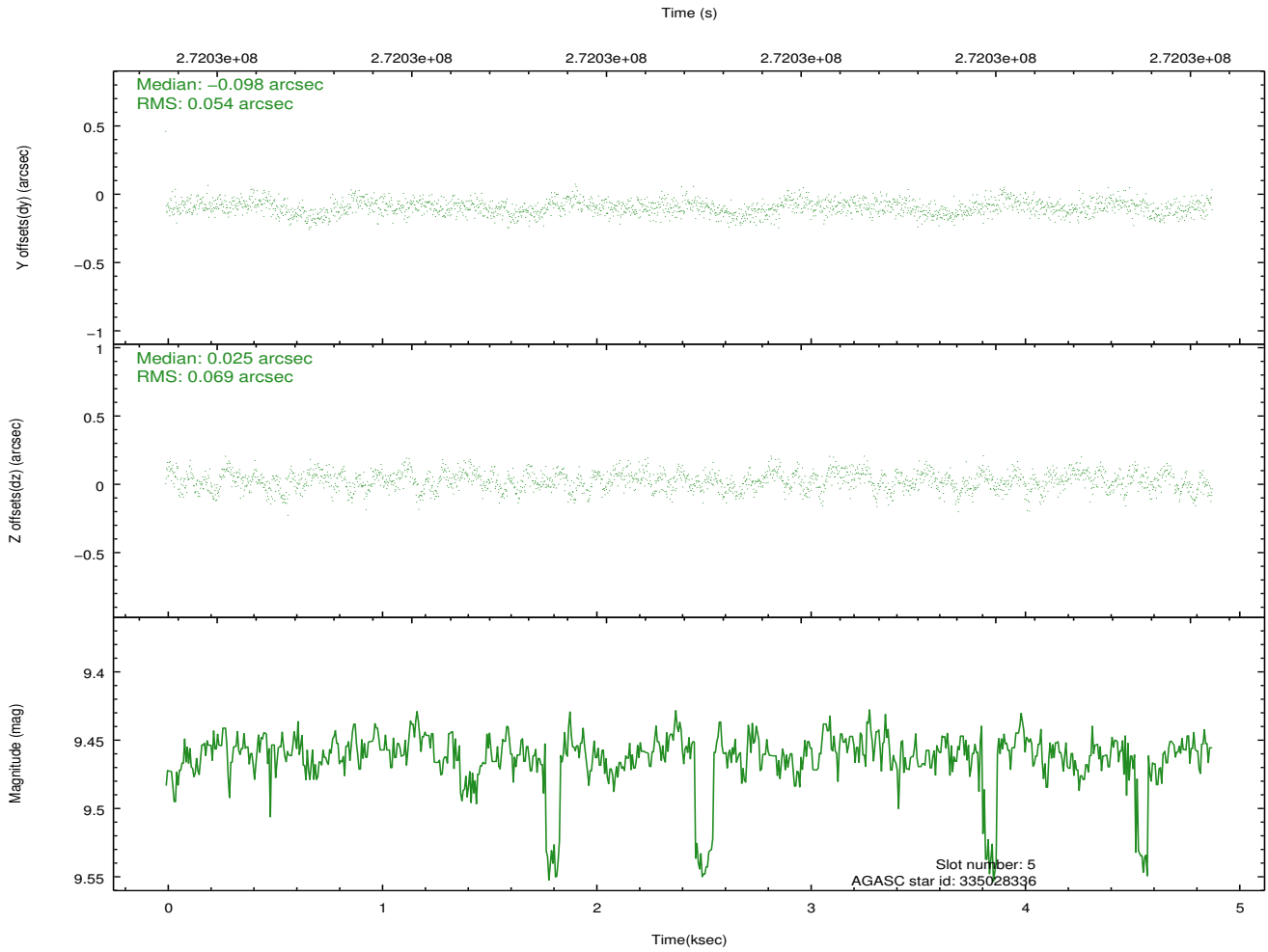
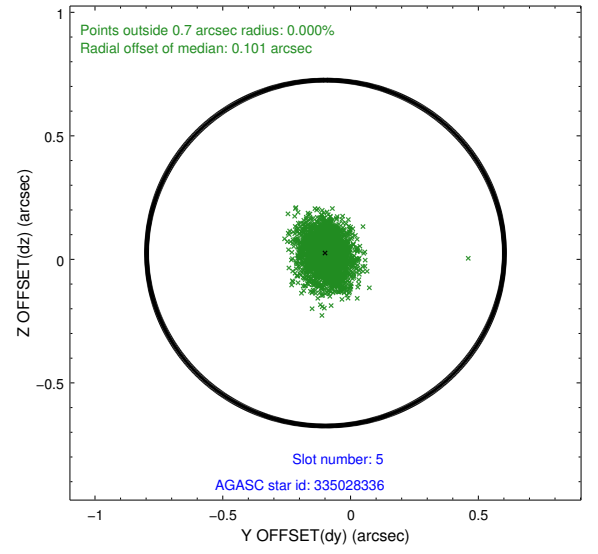
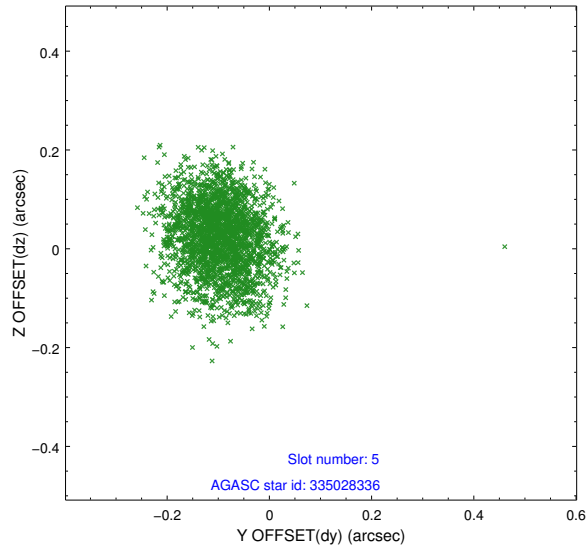
2.4.1 Slot 3



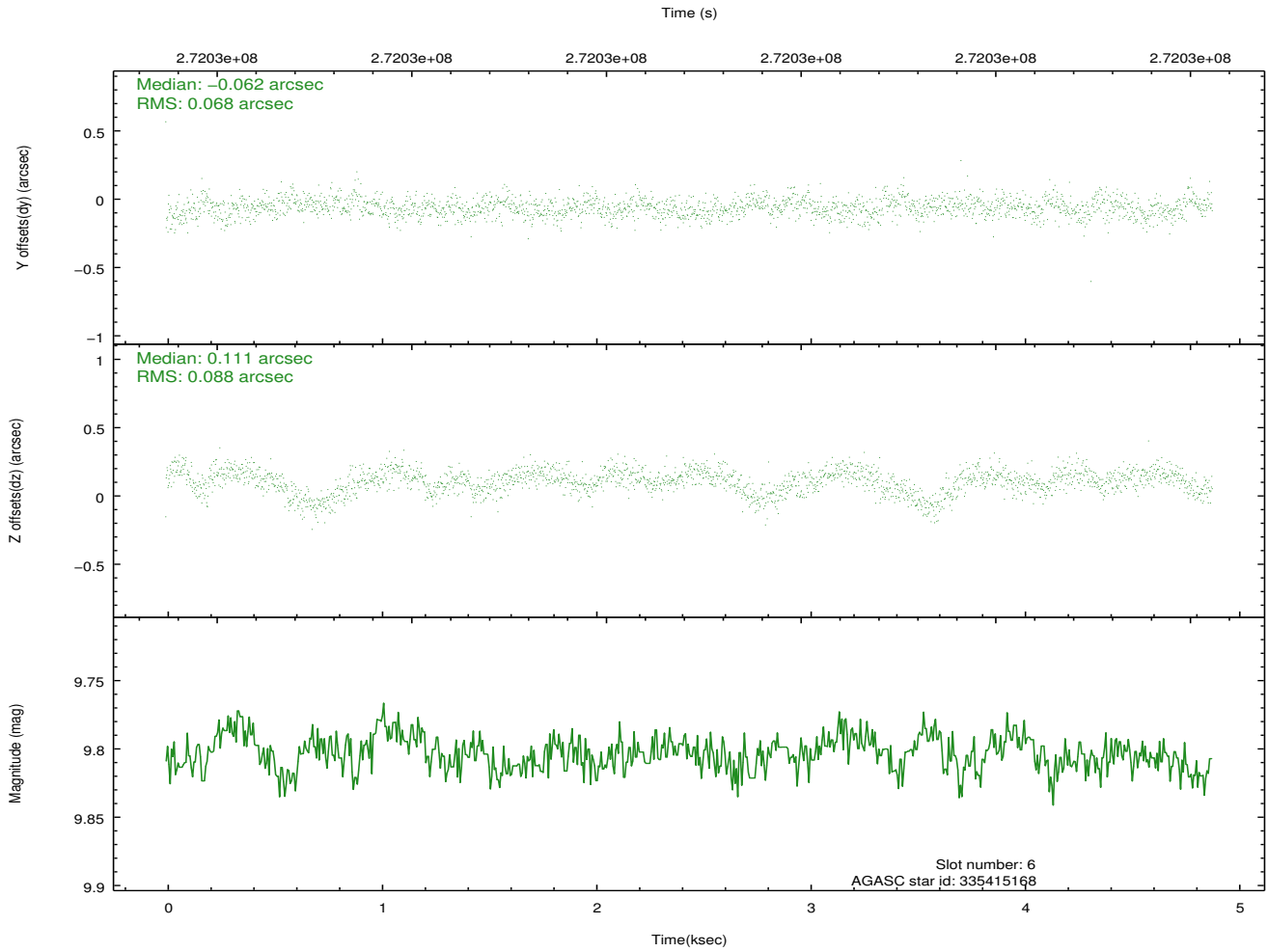
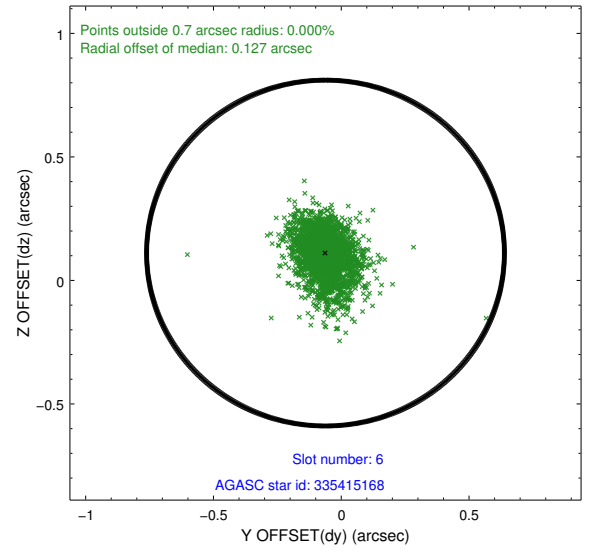
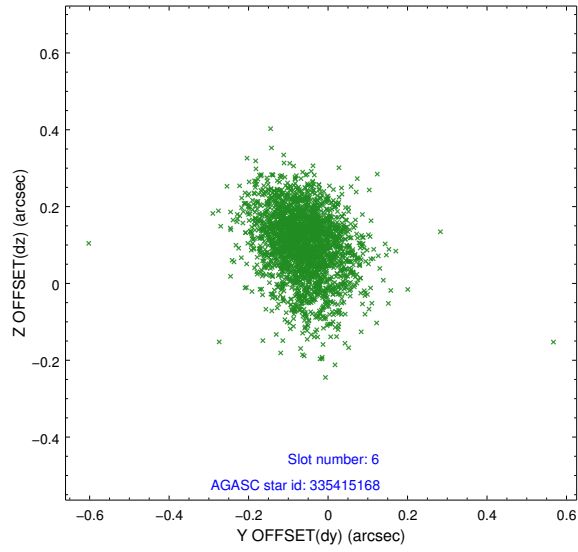
2.4.2 Slot 4



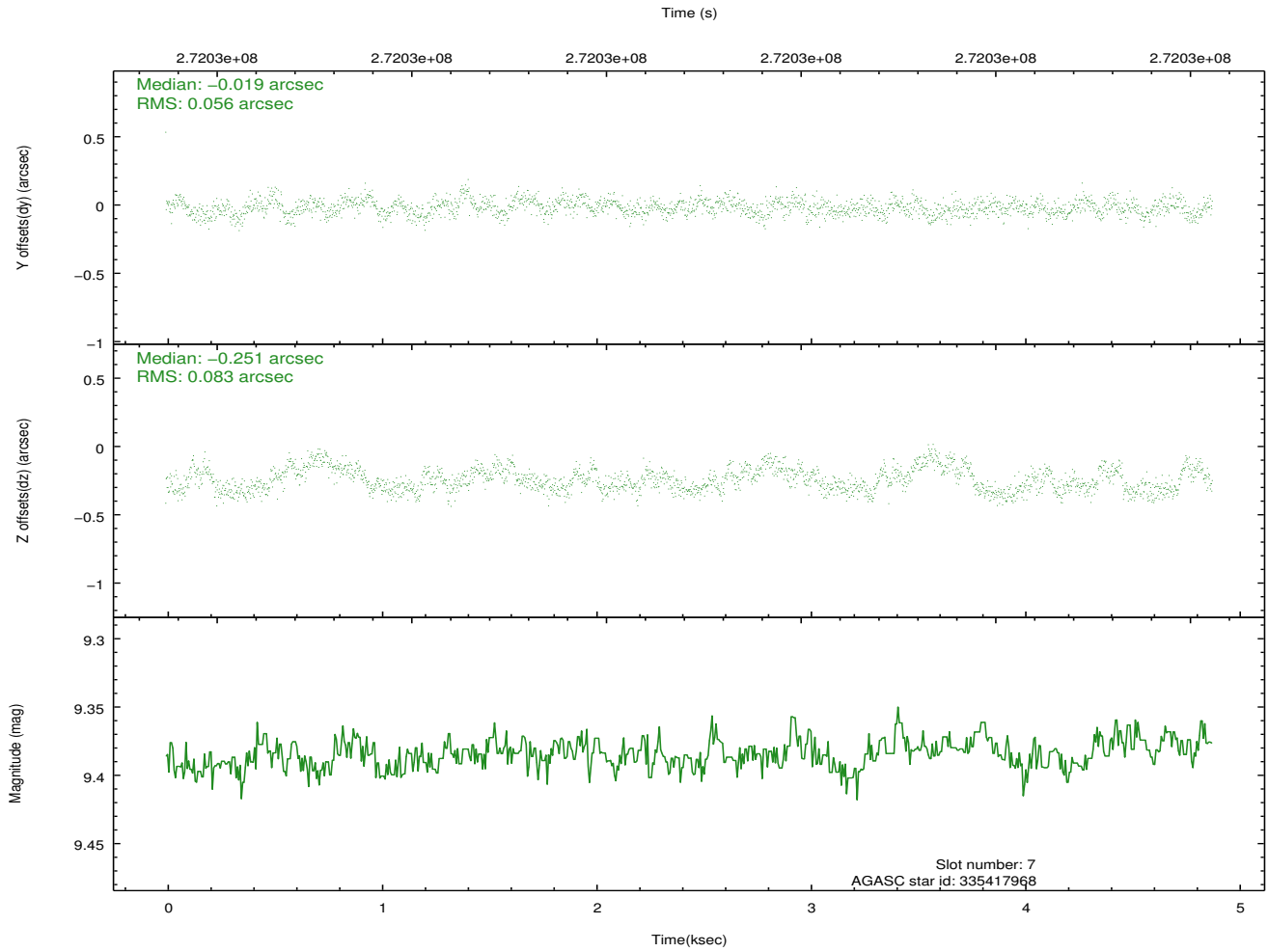
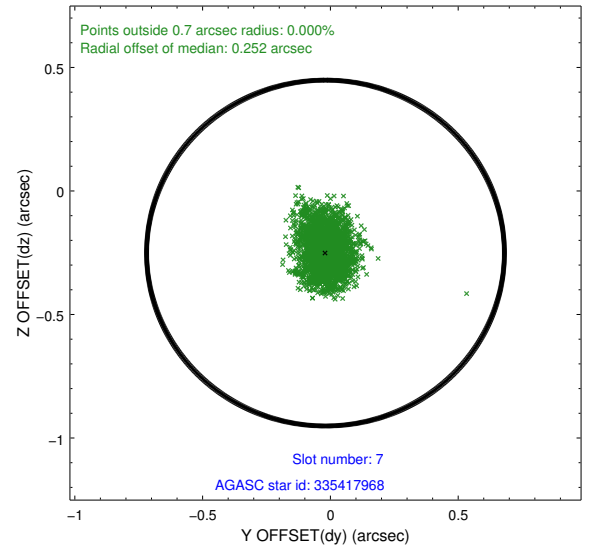
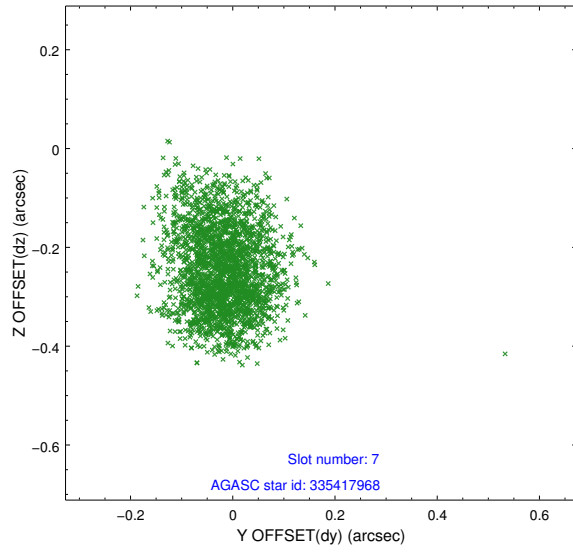
2.4.3 Slot 5



2.4.4 Slot 6

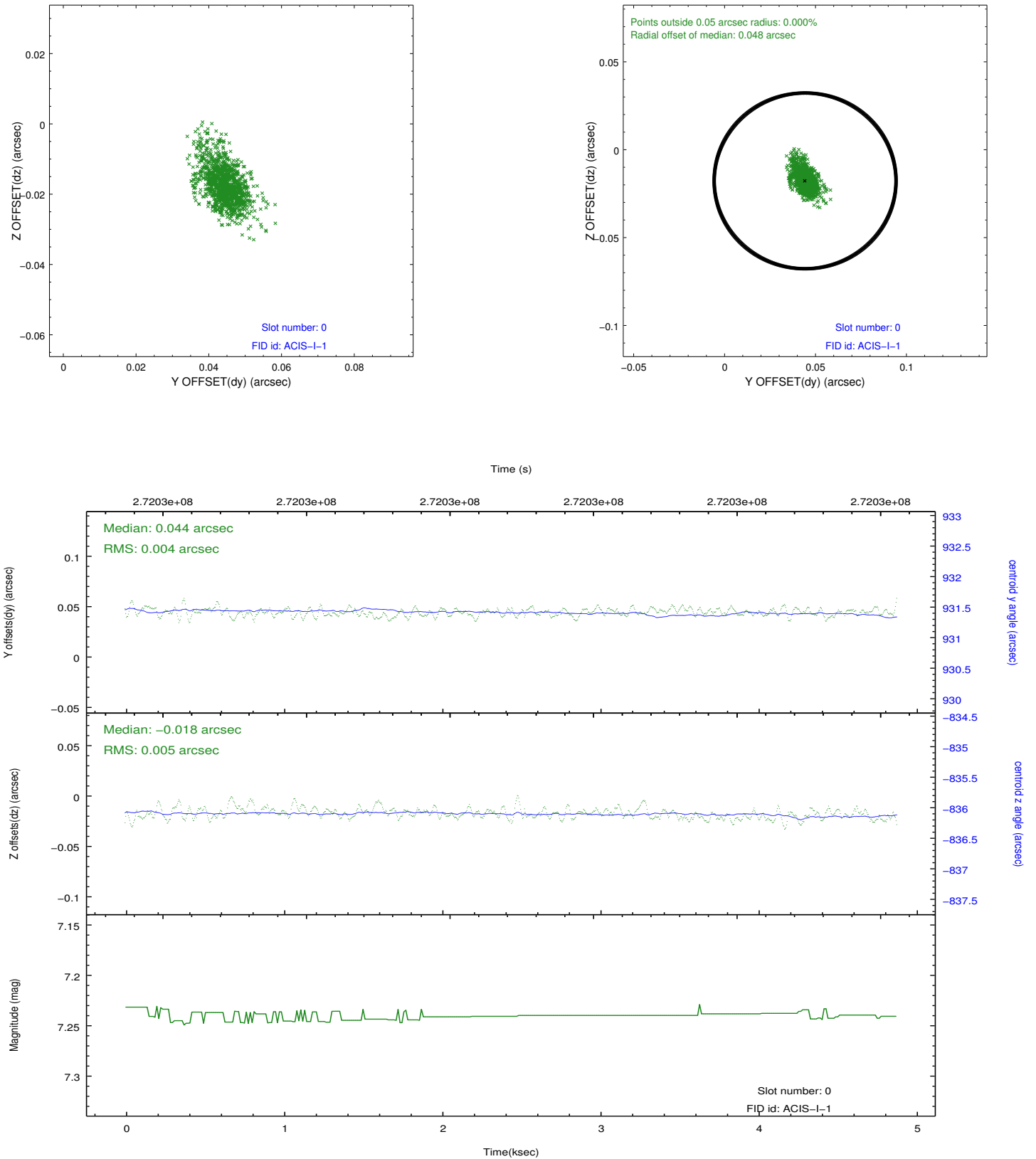


2.4.5 Slot 7

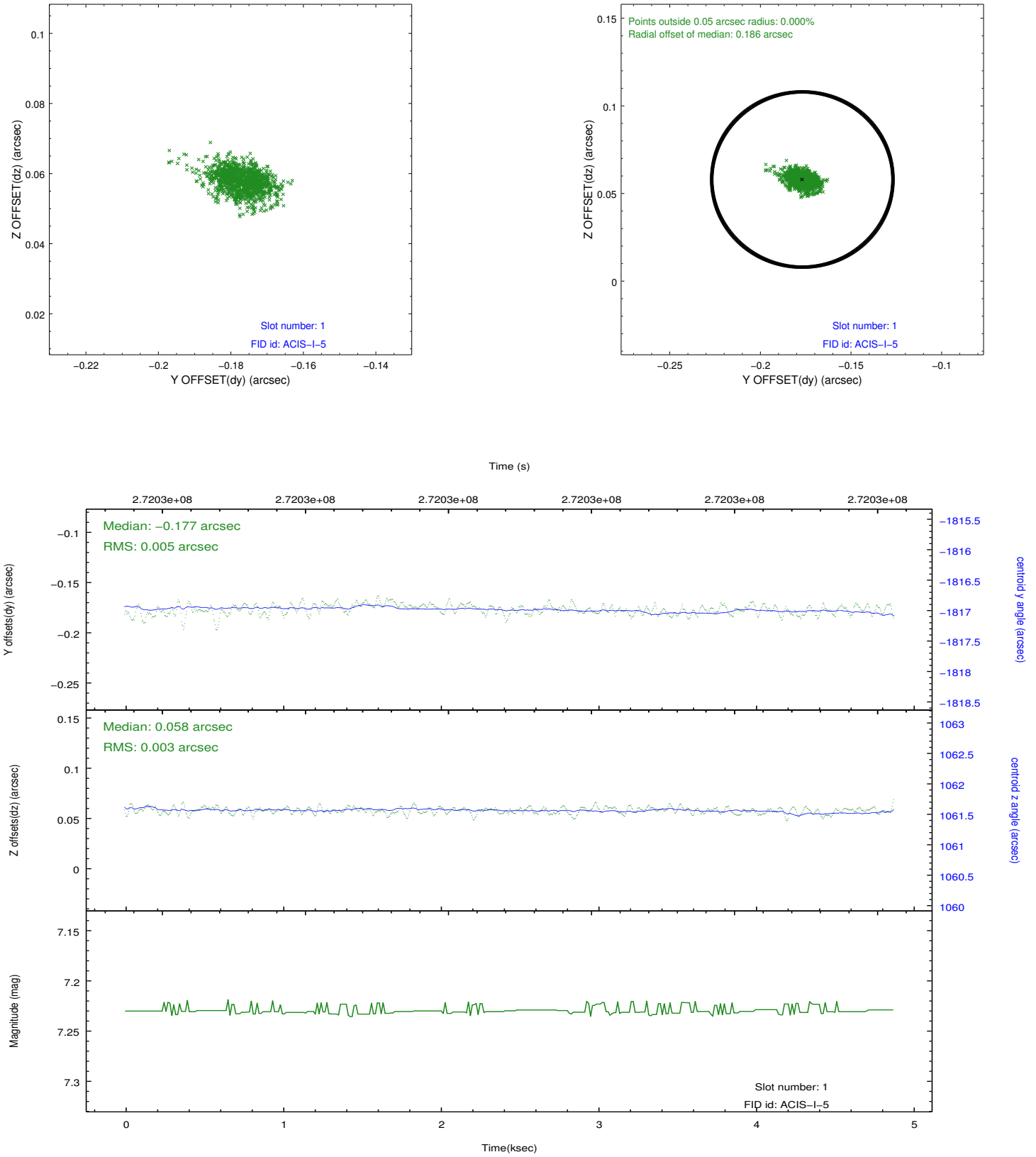


2.5 FID Slots

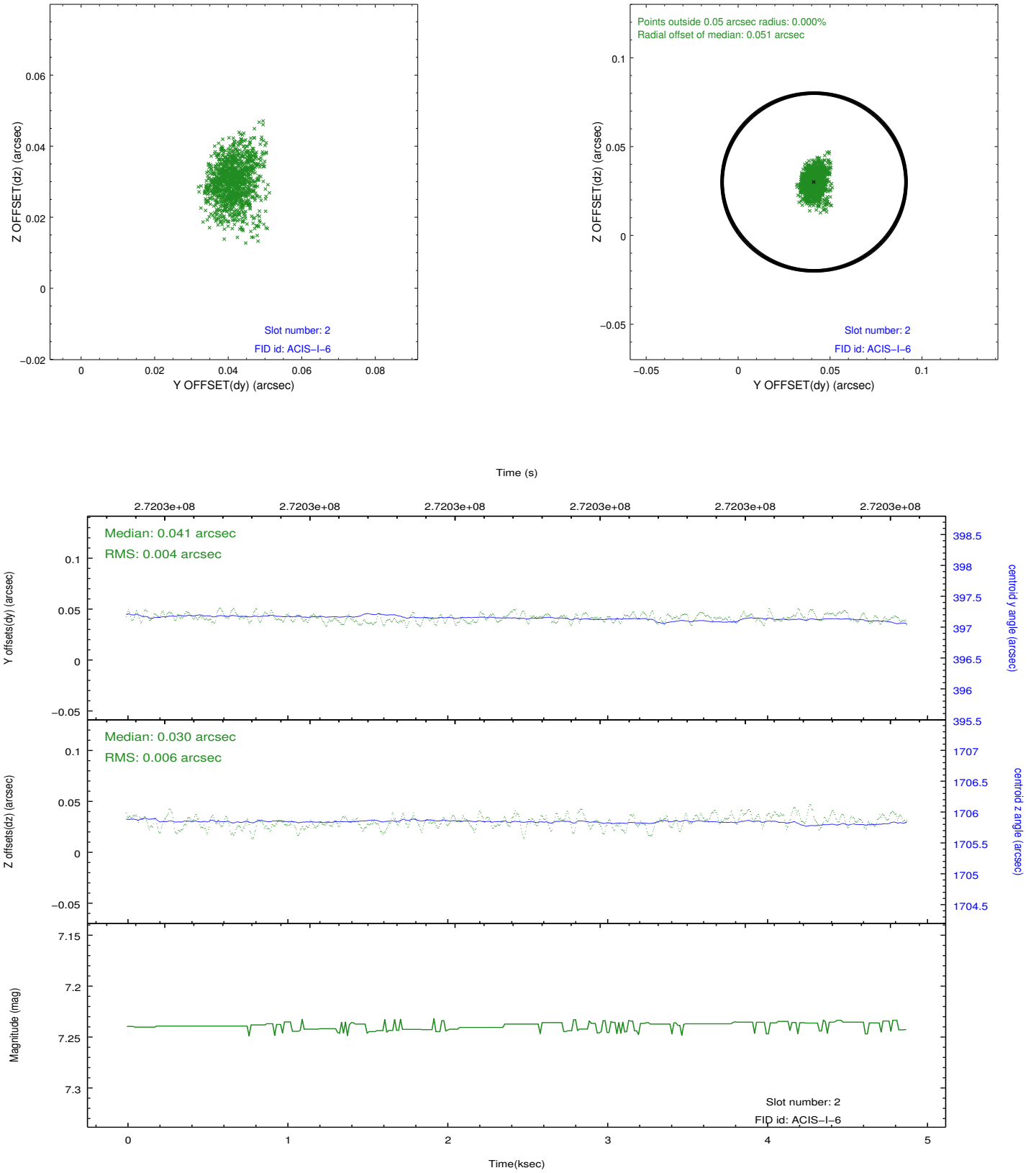
2.5.1 Slot 0



2.5.2 Slot 1



2.5.3 Slot 2



A Summary

A.1 Status

V&V Scientist	Jen Lauer
V&V Date (YYYY-MM-DD)	2012.04.08
V&V Edition	1
V&V Disposition and Status	OK
V&V Charge Time	4.47640003

A.2 Comments