

V&V Reference Report

L2 ASCDS Version : 8.4.3

Observation 6856 - L2 Version 2
Chandra X-Ray Center

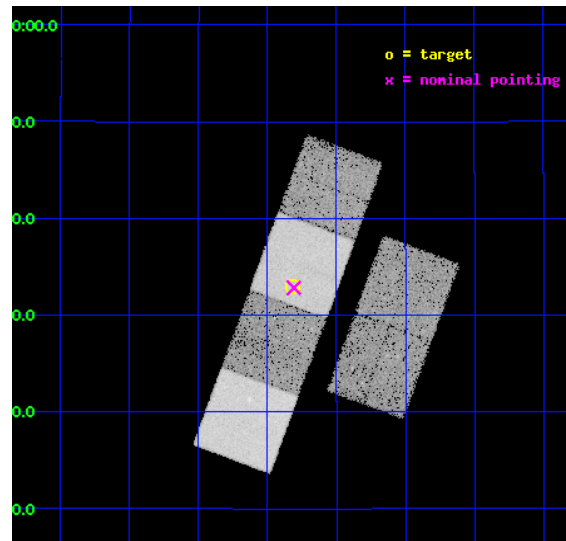
L2 Processing Date : Mar 20 2012

Contents

| | | |
|----------|-------------------------------|-----------|
| 1 | Front | 2 |
| 2 | OBI | 3 |
| 2.1 | OBI | 3 |
| 2.1.1 | Images | 3 |
| 2.1.2 | Bias | 3 |
| 2.1.3 | Parameters | 4 |
| 2.1.4 | Events | 4 |
| 2.2 | Compared Parameters | 5 |
| 2.3 | Aspect | 6 |
| 2.4 | Star Slots | 9 |
| 2.4.1 | Slot 3 | 9 |
| 2.4.2 | Slot 4 | 10 |
| 2.4.3 | Slot 5 | 11 |
| 2.4.4 | Slot 6 | 12 |
| 2.4.5 | Slot 7 | 13 |
| 2.5 | FID Slots | 14 |
| 2.5.1 | Slot 0 | 14 |
| 2.5.2 | Slot 1 | 15 |
| 2.5.3 | Slot 2 | 16 |
| A | Summary | 17 |
| A.1 | Status | 17 |
| A.2 | Comments | 17 |

1 Front

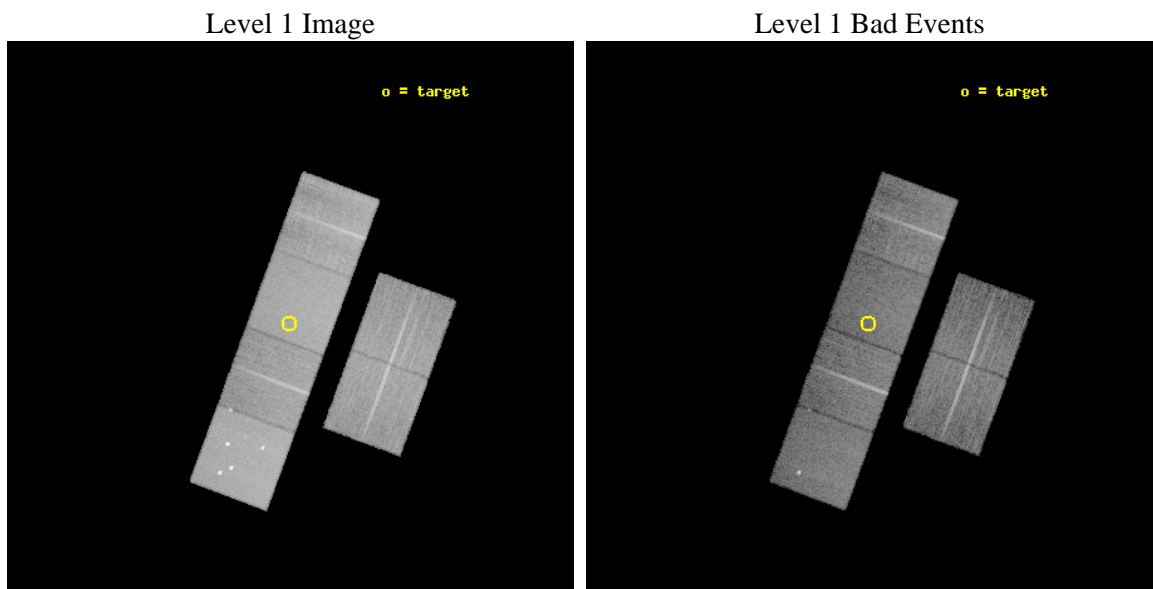
| | | |
|----------|--|---|
| seq_num | 701274 | Sequence number |
| obs_id | 6856 | Observation id |
| title | Chandra observations of (U)LIRGs with double nuclei: search for binary AGN and X-ray luminous starbursts | Proposal title |
| observer | Dr. Stefanie Komossa | Principal investigator |
| object | IRAS03359+1523 | Source name |
| dtcycle | 0 | |
| cycle | P | events from which exps? Prim/Second/Both |
| ra_targ | 54.703333 | Observer's specified target RA [deg] |
| dec_targ | 15.548889 | Observer's specified target Dec [deg] |
| ra_nom | 54.702170627459 | Nominal RA [deg] |
| dec_nom | 15.547136037492 | Nominal Dec [deg] |
| roll_nom | 290.23174882147 | Nominal Roll [deg] |
| revision | 2 | Processing version of data |
| ontime | 14953.599944293 | Sum of GTIs [s] |
| livetime | 14764.248457822 | Livetime [s] |
| ontime2 | 14950.358954012 | Sum of GTIs [s] |
| ontime3 | 14953.599944293 | Sum of GTIs [s] |
| ontime5 | 14953.599944293 | Sum of GTIs [s] |
| ontime6 | 14953.599944293 | Sum of GTIs [s] |
| ontime7 | 14953.599944293 | Sum of GTIs [s] |
| ontime8 | 14953.599944293 | Sum of GTIs [s] |
| l2events | 194946 | Number of level 2 events |



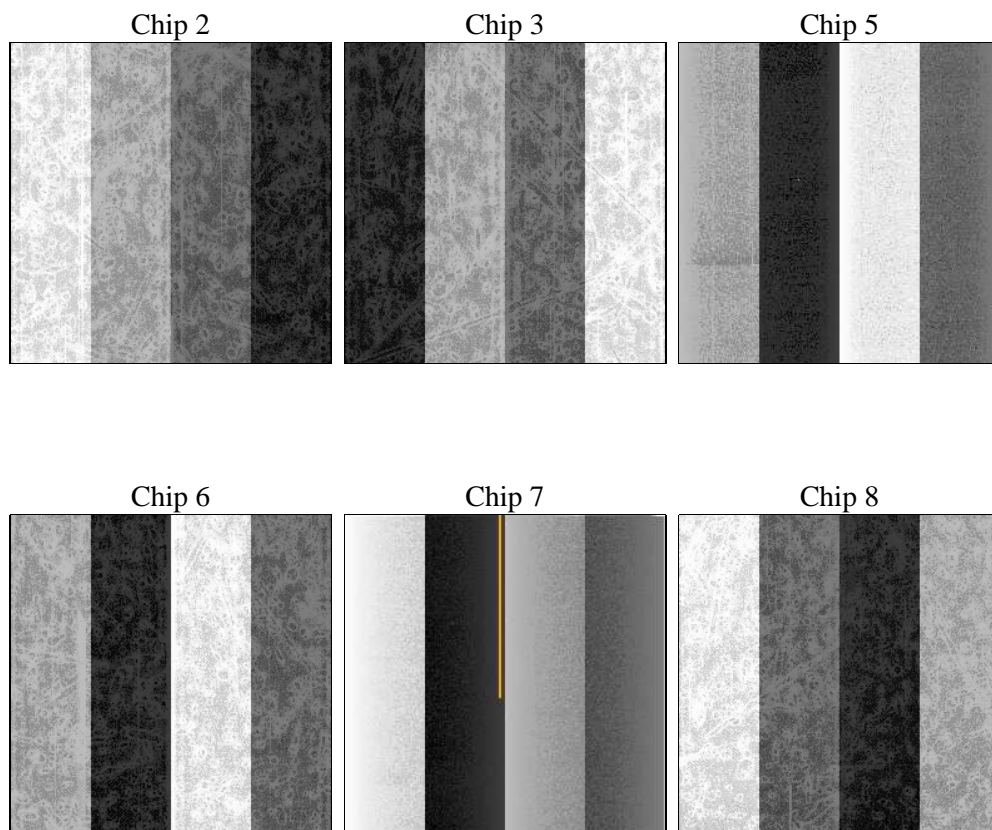
2 OBI

2.1 OBI

2.1.1 Images



2.1.2 Bias



2.1.3 Parameters

| | | | | | |
|----------|---------------------|--------------------------------|----------------|-----------------|---|
| obi_num | 0 | Obi number | sched_exp_time | 15000.000000 | [s] Scheduled observation exposure time |
| ascdsver | 8.4.3 | Processing system revision | ontime | 14953.599944293 | Sum of GTIs [s] |
| caldsver | 4.4.8 | | ontime2 | 14950.358954012 | Sum of GTIs [s] |
| date | 2012-03-20T02:52:27 | Date and time of file creation | ontime3 | 14953.599944293 | Sum of GTIs [s] |
| revision | 2 | Processing version of data | ontime5 | 14953.599944293 | Sum of GTIs [s] |
| | | | ontime6 | 14953.599944293 | Sum of GTIs [s] |
| | | | ontime7 | 14953.599944293 | Sum of GTIs [s] |
| | | | ontime8 | 14953.599944293 | Sum of GTIs [s] |
| | | | l1events | 875309 | Number of level 1 events |

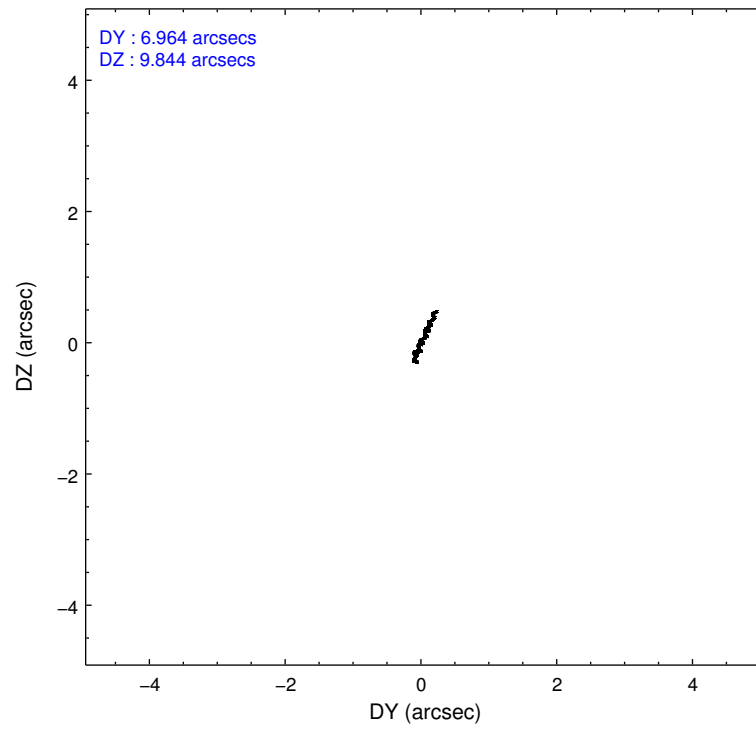
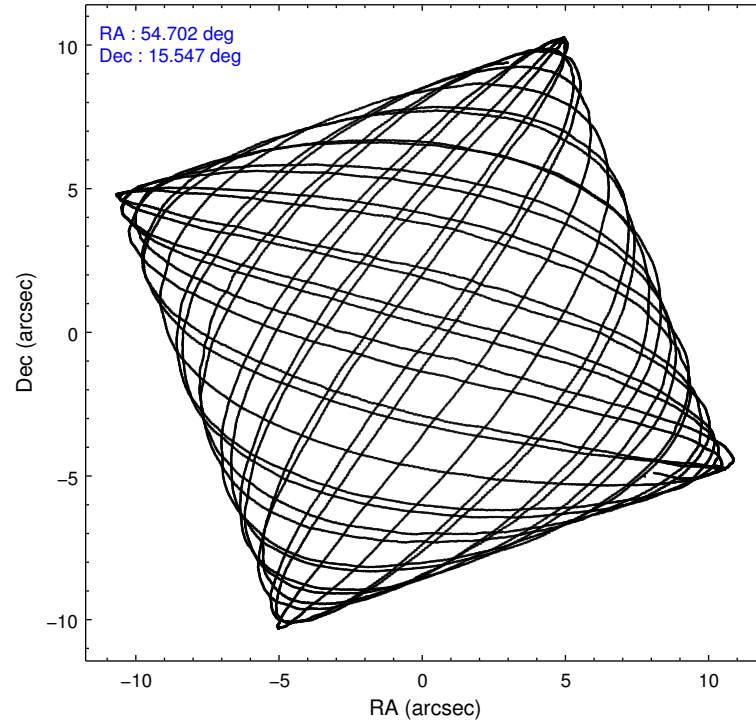
2.1.4 Events

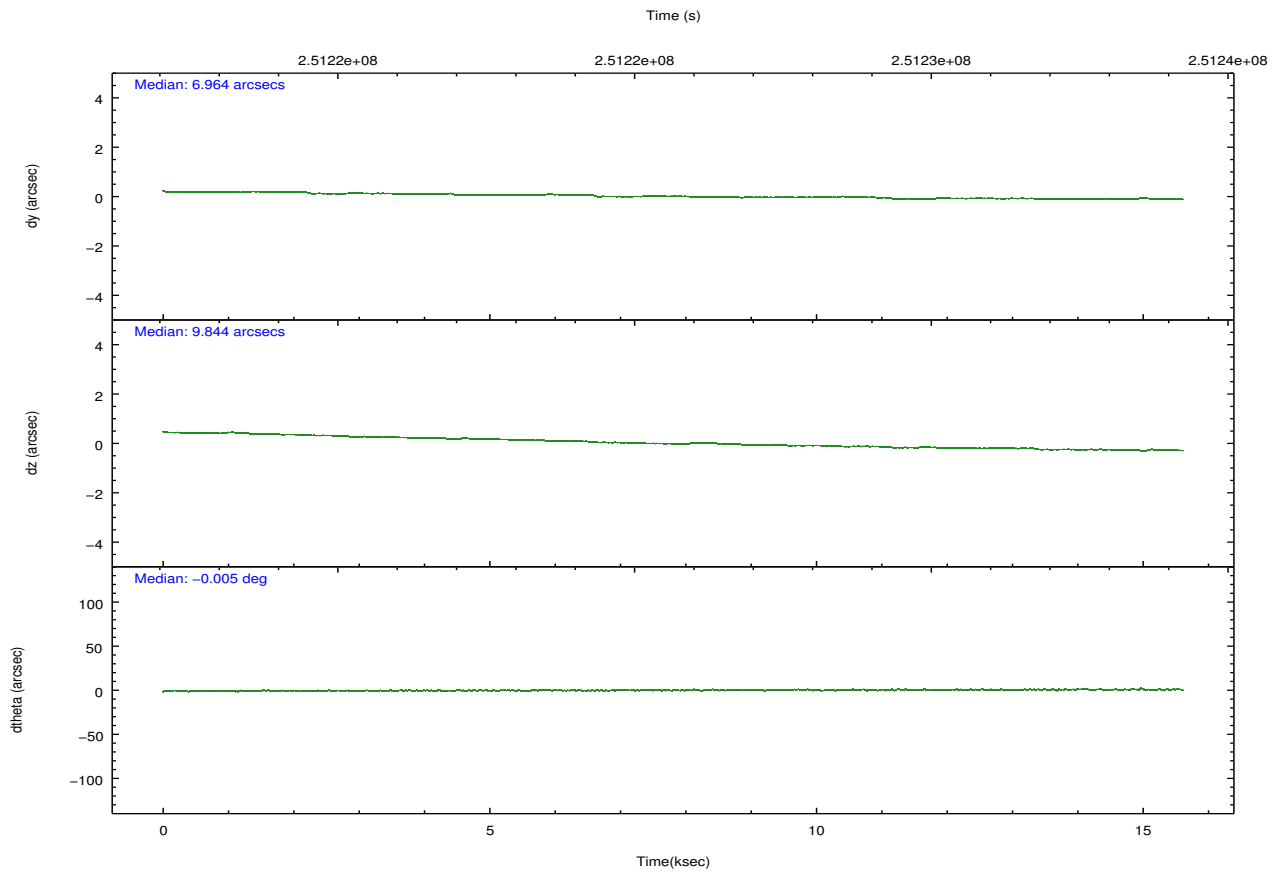
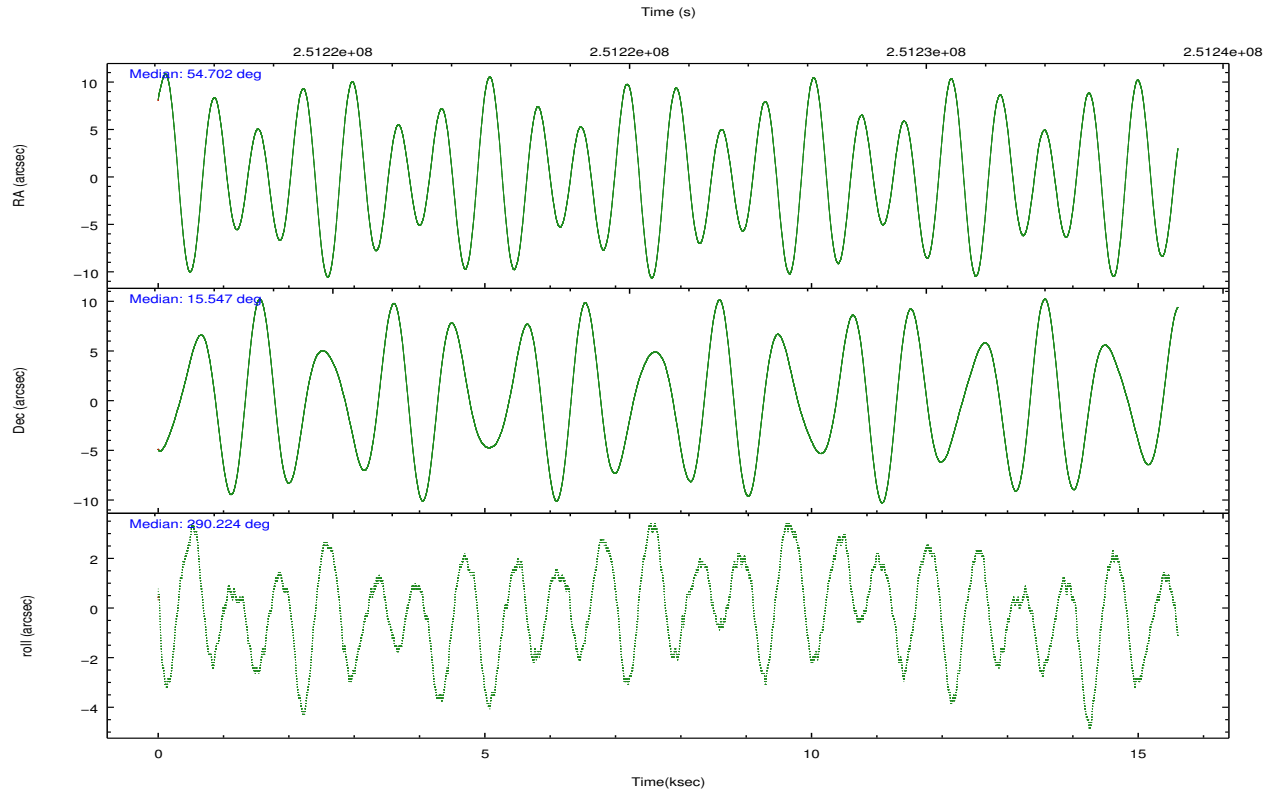
| | ccd 2 | ccd 3 | ccd 5 | ccd 6 | ccd 7 | ccd 8 | | ccd 2 | ccd 3 | ccd 5 | ccd 6 | ccd 7 | ccd 8 |
|-----------------|--------|--------|--------|--------|--------|--------|----------------|--------|-------|-------|--------|-------|--------|
| level 1 events | 124751 | 117683 | 192976 | 120445 | 164232 | 155222 | grade 0 events | 6327 | 6088 | 15322 | 5663 | 5884 | 10443 |
| rejected events | 110637 | 103684 | 101281 | 106008 | 96755 | 121824 | | 5% | 5% | 7% | 4% | 3% | 6% |
| rejected % | 88% | 88% | 52% | 88% | 58% | 78% | grade 1 events | 71 | 81 | 345 | 77 | 167 | 94 |
| | | | | | | | | 0% | 0% | 0% | 0% | 0% | 0% |
| | | | | | | | grade 2 events | 2921 | 2676 | 25693 | 3120 | 13586 | 7521 |
| | | | | | | | | 2% | 2% | 13% | 2% | 8% | 4% |
| | | | | | | | grade 3 events | 1269 | 1386 | 3404 | 1414 | 5944 | 3558 |
| | | | | | | | | 1% | 1% | 1% | 1% | 3% | 2% |
| | | | | | | | grade 4 events | 1353 | 1340 | 2946 | 1360 | 5760 | 3229 |
| | | | | | | | | 1% | 1% | 1% | 1% | 3% | 2% |
| | | | | | | | grade 5 events | 4698 | 5398 | 13703 | 5737 | 15703 | 7500 |
| | | | | | | | | 3% | 4% | 7% | 4% | 9% | 4% |
| | | | | | | | grade 6 events | 2257 | 2513 | 44364 | 2891 | 36333 | 8653 |
| | | | | | | | | 1% | 2% | 22% | 2% | 22% | 5% |
| | | | | | | | grade 7 events | 105855 | 98201 | 87199 | 100183 | 80855 | 114224 |
| | | | | | | | | 84% | 83% | 45% | 83% | 49% | 73% |

2.2 Compared Parameters

| Parameter | Planned | Actual | Parameter | Planned | Actual |
|-----------------------------------|---------------------|----------------------|---------------------------------------|-----------|---------|
| Instrument | ACIS | ACIS | Obspar format version number | 7 | 7 |
| Detector | ACIS-235678 | ACIS-235678 | Obspar file type | PREDICTED | ACTUAL |
| Grating | NONE | NONE | Obspar update status | NONE | UPDATED |
| Data mode | FAINT | FAINT | Number of optional ACIS chips dropped | 0 | 0 |
| Observation mode | POINTING | POINTING | On-chip summing requested | N | N |
| [deg] Pointing RA | 54.680181 | 54.70217062745891 | Subarray requested | NONE | NONE |
| [deg] Pointing Dec | 15.564278 | 15.54713603749178 | Alternating exposures requested | N | N |
| [deg] Pointing Roll | 290.081018 | 290.2317488214726 | [s] Primary exposure time | 0.000000 | 3.2 |
| [mm] SIM focus pos | -0.684267 | -0.6828225247311905 | | | |
| [mm] SIM defocus | 0 | 0.001444936568705701 | | | |
| [mm] SIM translation stage pos | -190.132523 | -190.1425803651734 | | | |
| [mm] SIM translation stage offset | 0 | 0.01005778216563158 | | | |
| [s] Observation start time (MET) | 251218448.184000 | 251217277.35838 | | | |
| Observation start date | 2005-12-17T14:53:04 | 2005-12-17T14:34:37 | | | |
| [s] Observation end time (MET) | 251233448.184000 | 251234478.90918 | | | |
| Observation end date | 2005-12-17T19:03:04 | 2005-12-17T19:21:18 | | | |
| Read mode | TIMED | TIMED | | | |

2.3 Aspect



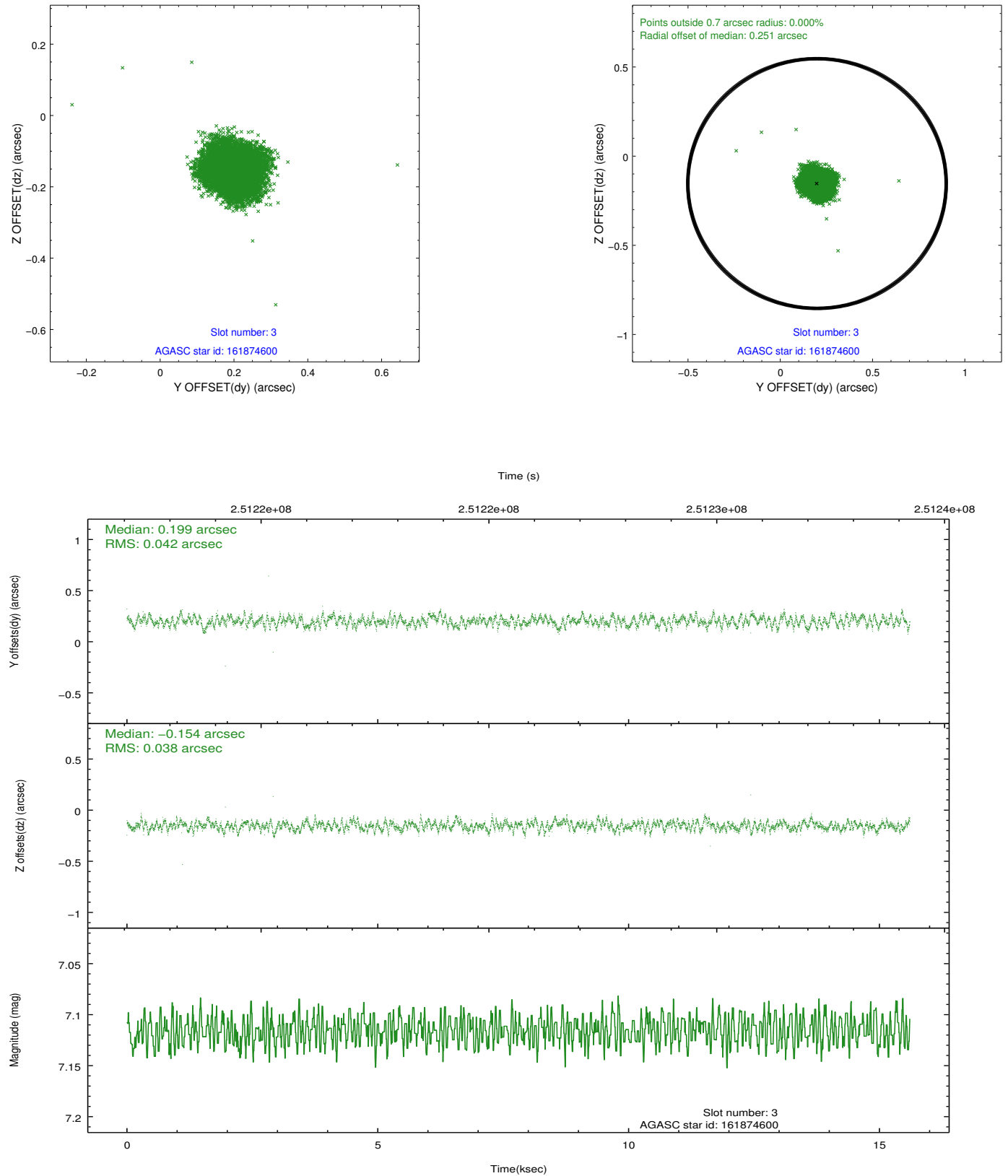


Slot Statistics

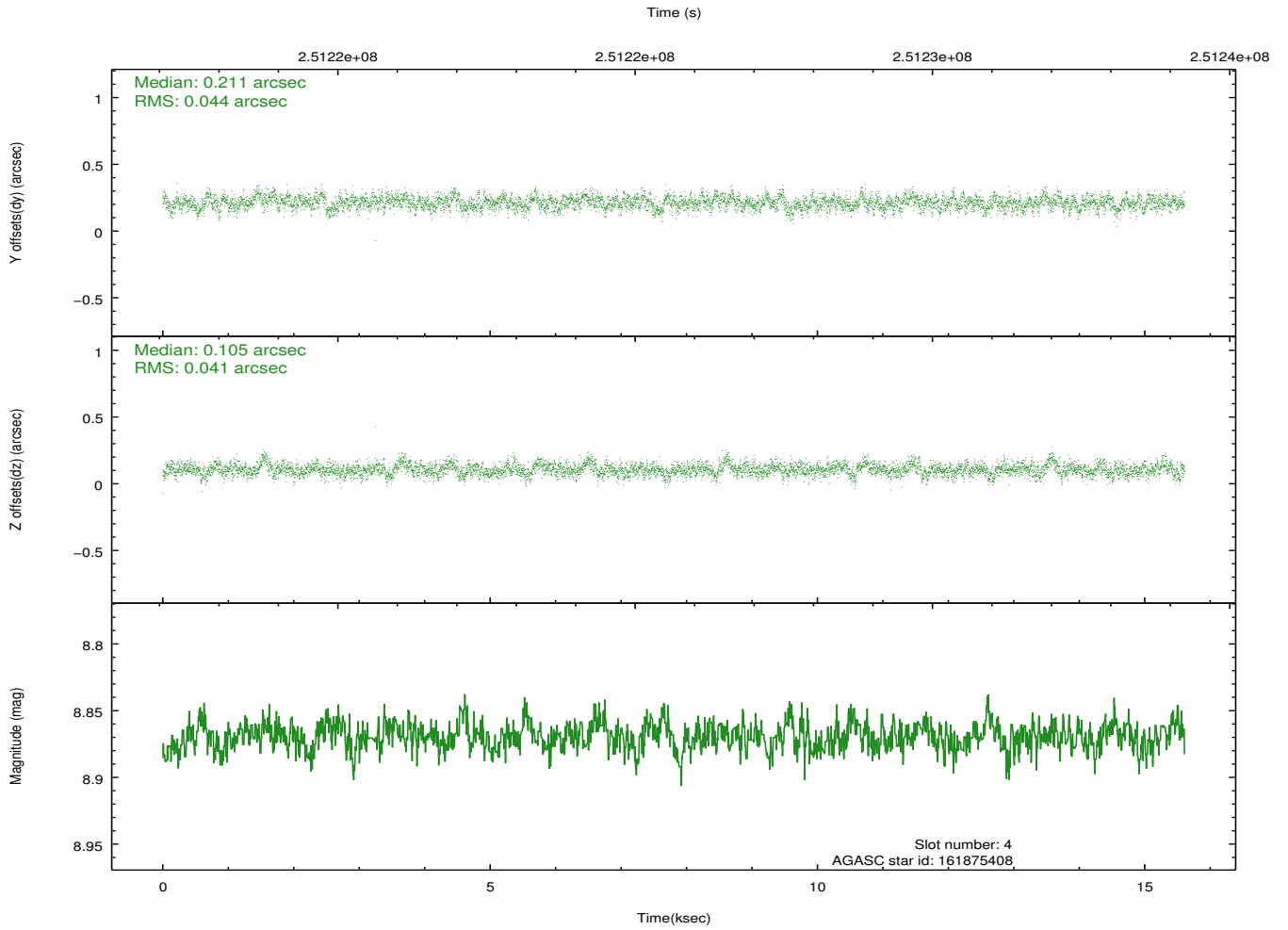
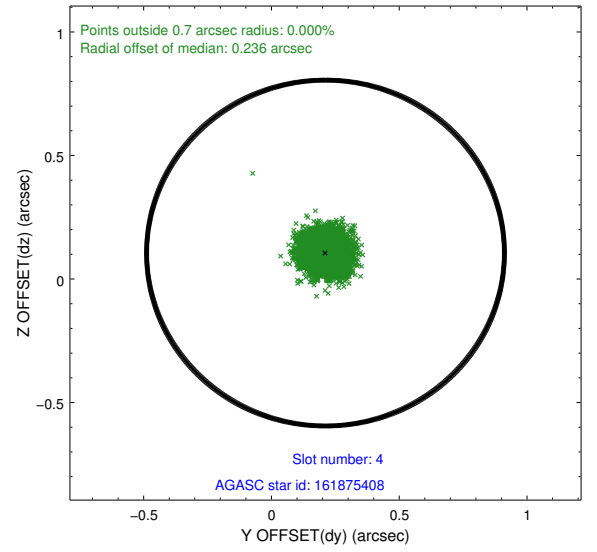
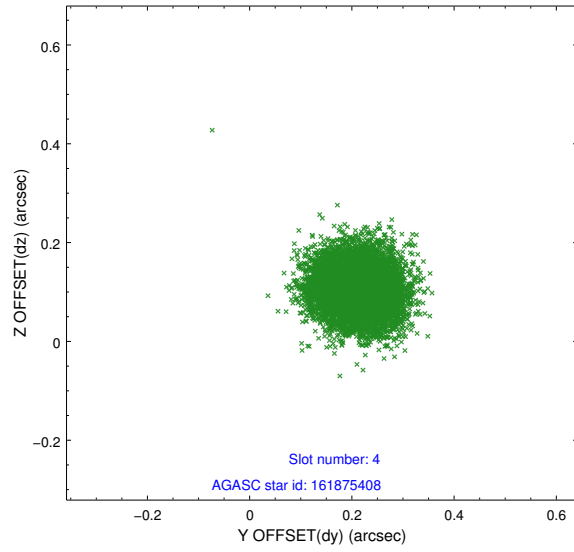
| slot | status | id | mag | n_pts | med_dy | med_dz | dr1 | dr2 | ra | dec | mean_y | mean_z |
|------|--------|-----------|------|-------|--------|--------|-------|-------|-----------|-----------|----------|----------|
| 0 | FID | ACIS-S-2 | 7.11 | 3808 | -0.064 | -0.043 | 0.008 | 0.014 | 0.000000 | 0.000000 | -759.77 | -1731.13 |
| 1 | FID | ACIS-S-4 | 7.21 | 3808 | 0.117 | 0.042 | 0.006 | 0.011 | 0.000000 | 0.000000 | 2153.53 | 177.20 |
| 2 | FID | ACIS-S-5 | 7.24 | 3808 | -0.085 | 0.010 | 0.008 | 0.013 | 0.000000 | 0.000000 | -1812.30 | 171.09 |
| 3 | GUIDE | 161874600 | 7.12 | 7615 | 0.199 | -0.154 | 0.060 | 0.093 | 54.609888 | 15.149628 | 1318.57 | -741.71 |
| 4 | GUIDE | 161875408 | 8.87 | 7613 | 0.211 | 0.105 | 0.064 | 0.104 | 55.060083 | 15.190636 | 1715.89 | 778.65 |
| 5 | GUIDE | 161877120 | 8.73 | 7612 | -0.187 | 0.094 | 0.082 | 0.134 | 55.001293 | 16.360197 | -2311.18 | 2026.09 |
| 6 | GUIDE | 161880568 | 9.45 | 7611 | -0.128 | 0.118 | 0.103 | 0.162 | 54.926982 | 16.178550 | -1784.88 | 1561.19 |
| 7 | GUIDE | 161882088 | 6.81 | 7613 | -0.095 | -0.165 | 0.070 | 0.110 | 54.449296 | 15.430556 | 176.80 | -917.31 |

2.4 Star Slots

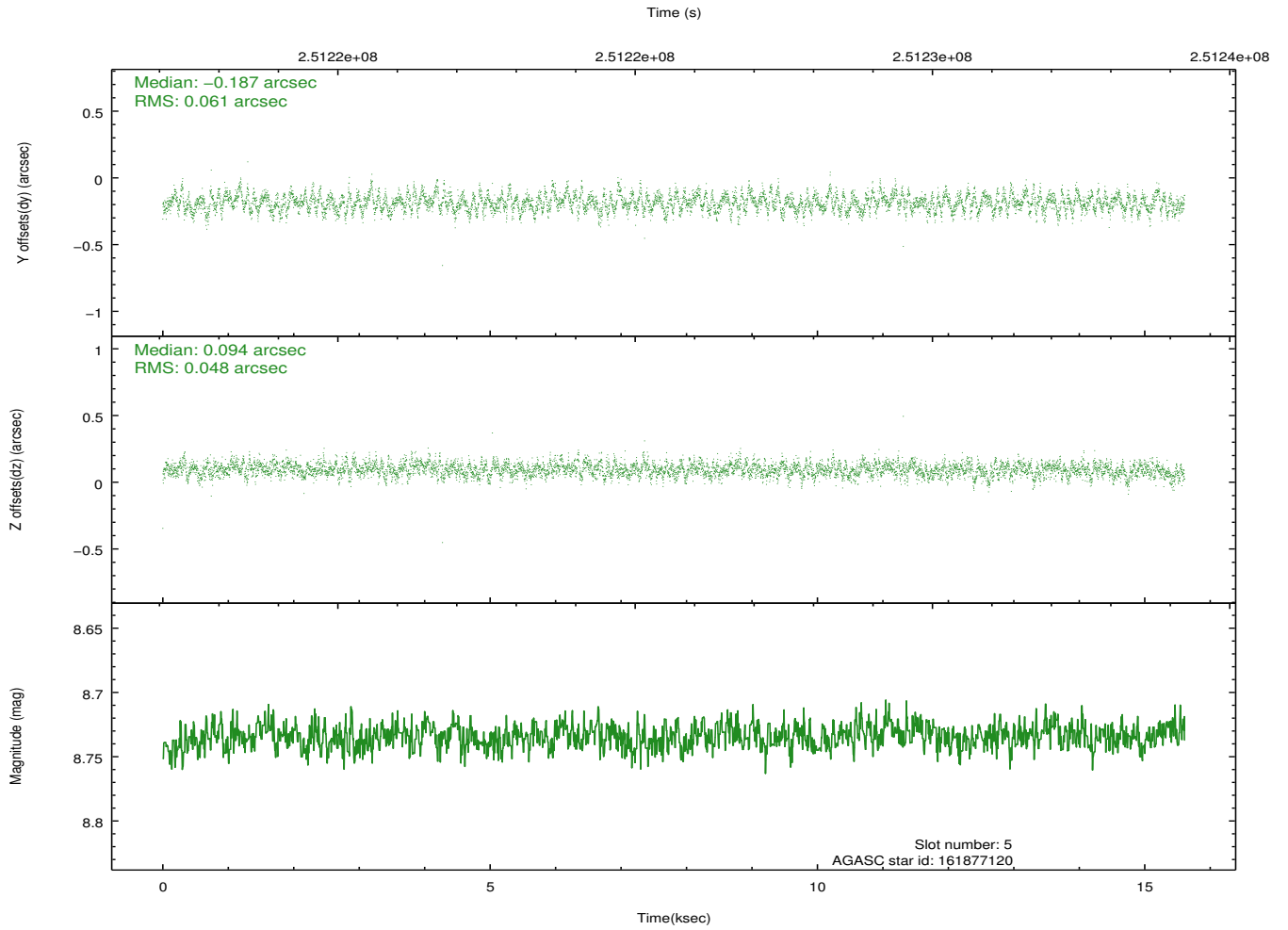
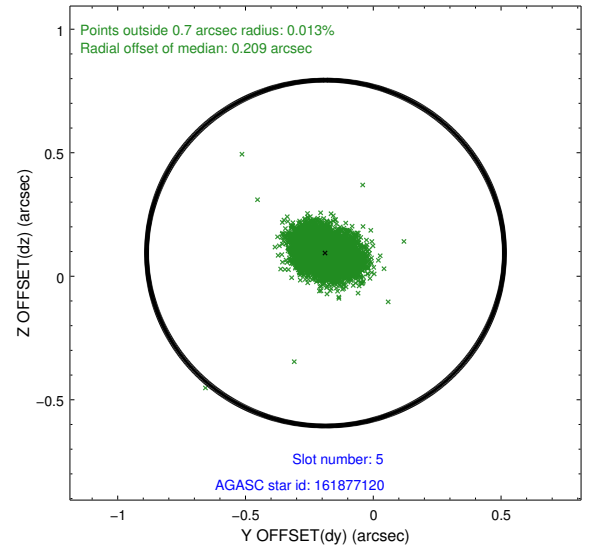
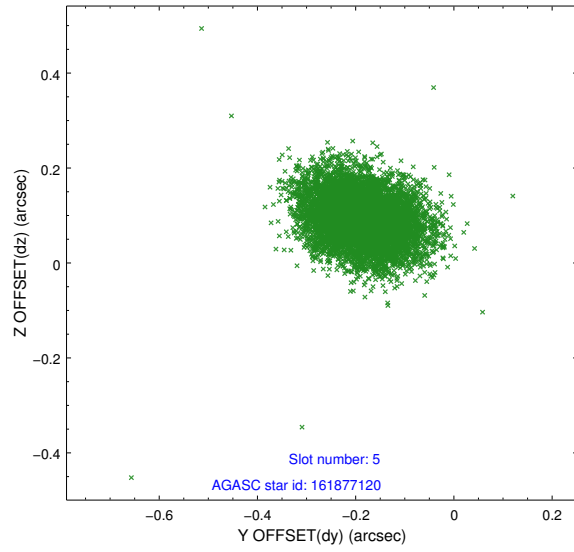
2.4.1 Slot 3



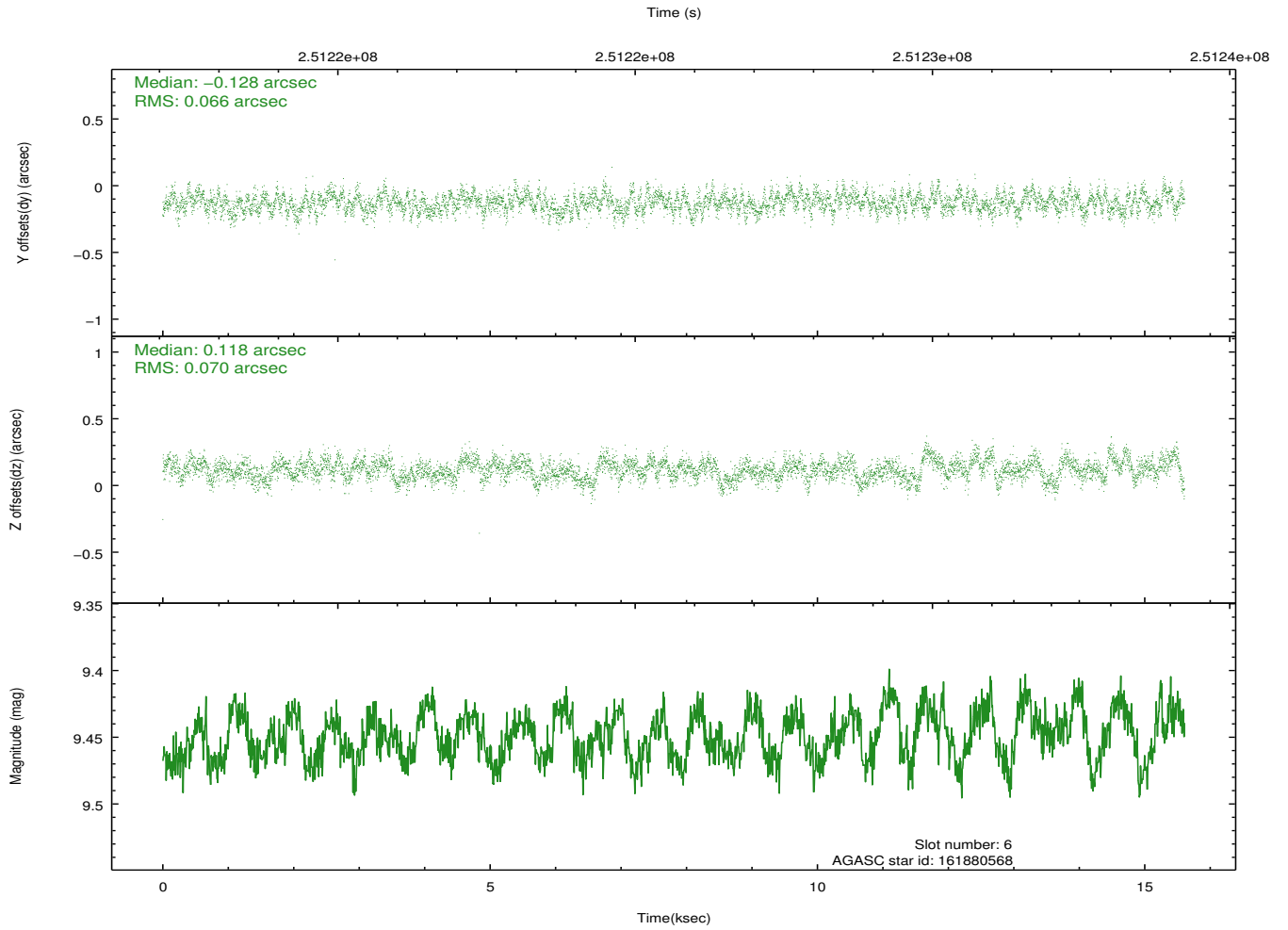
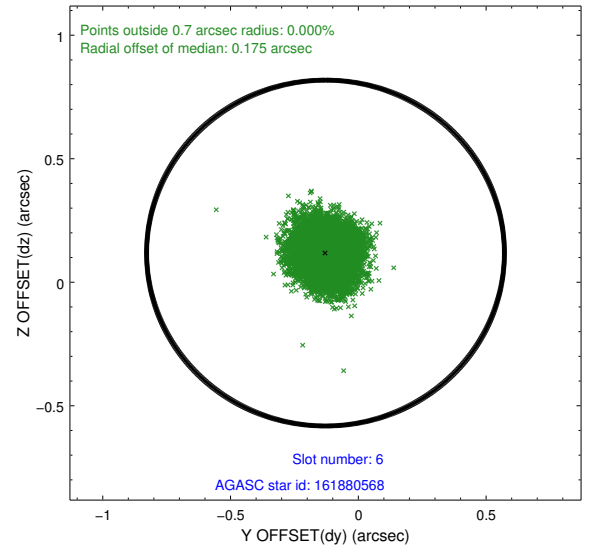
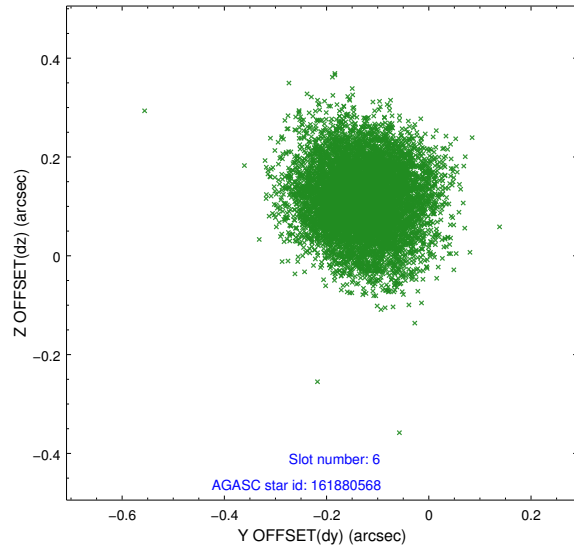
2.4.2 Slot 4



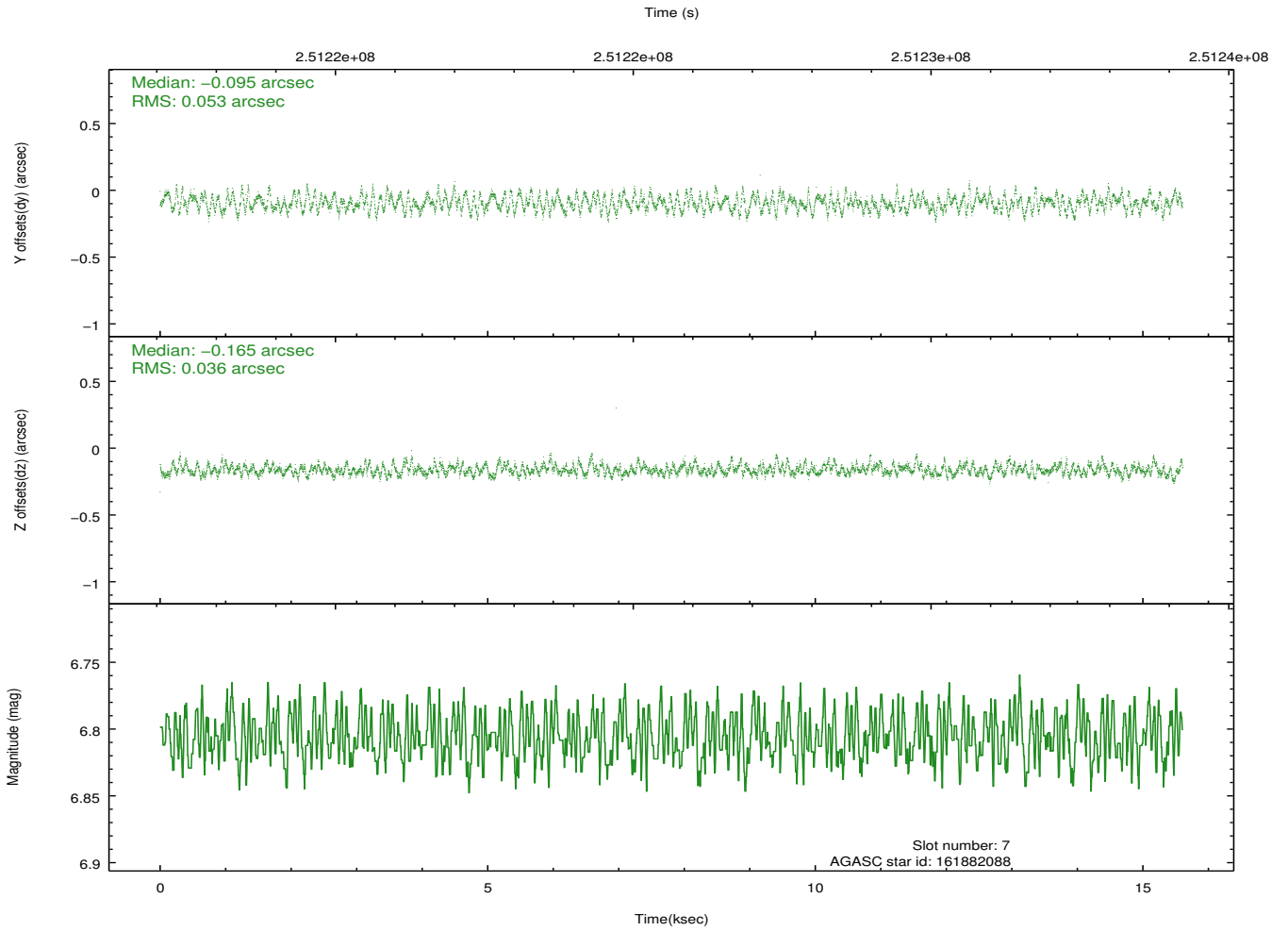
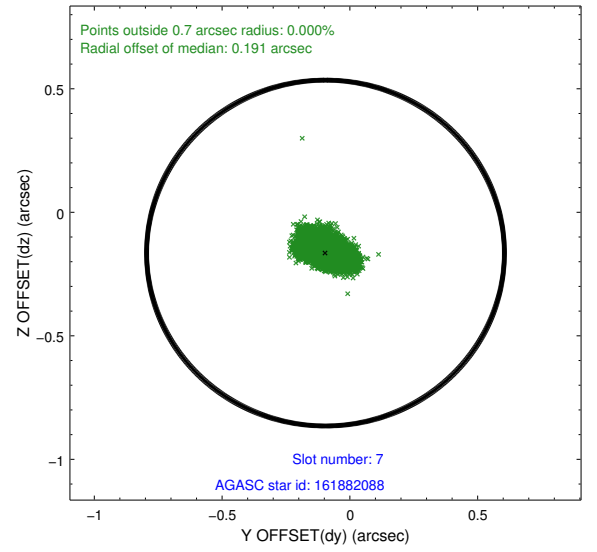
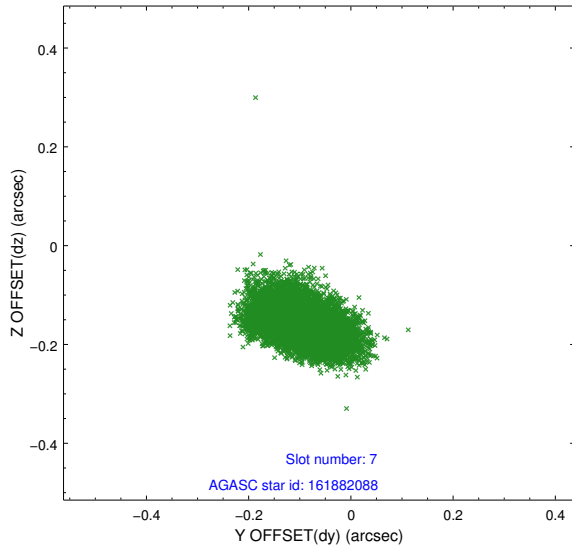
2.4.3 Slot 5



2.4.4 Slot 6

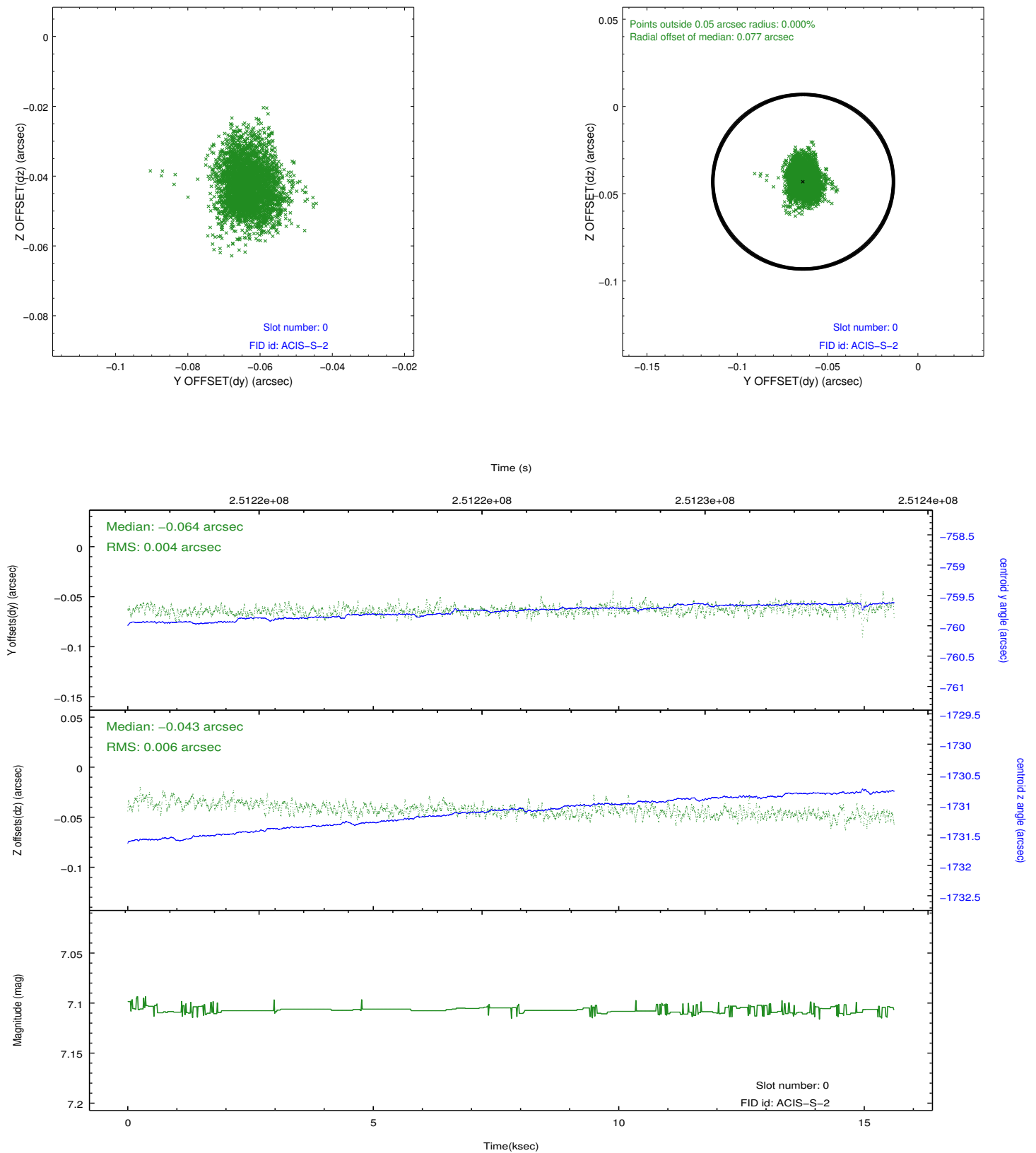


2.4.5 Slot 7

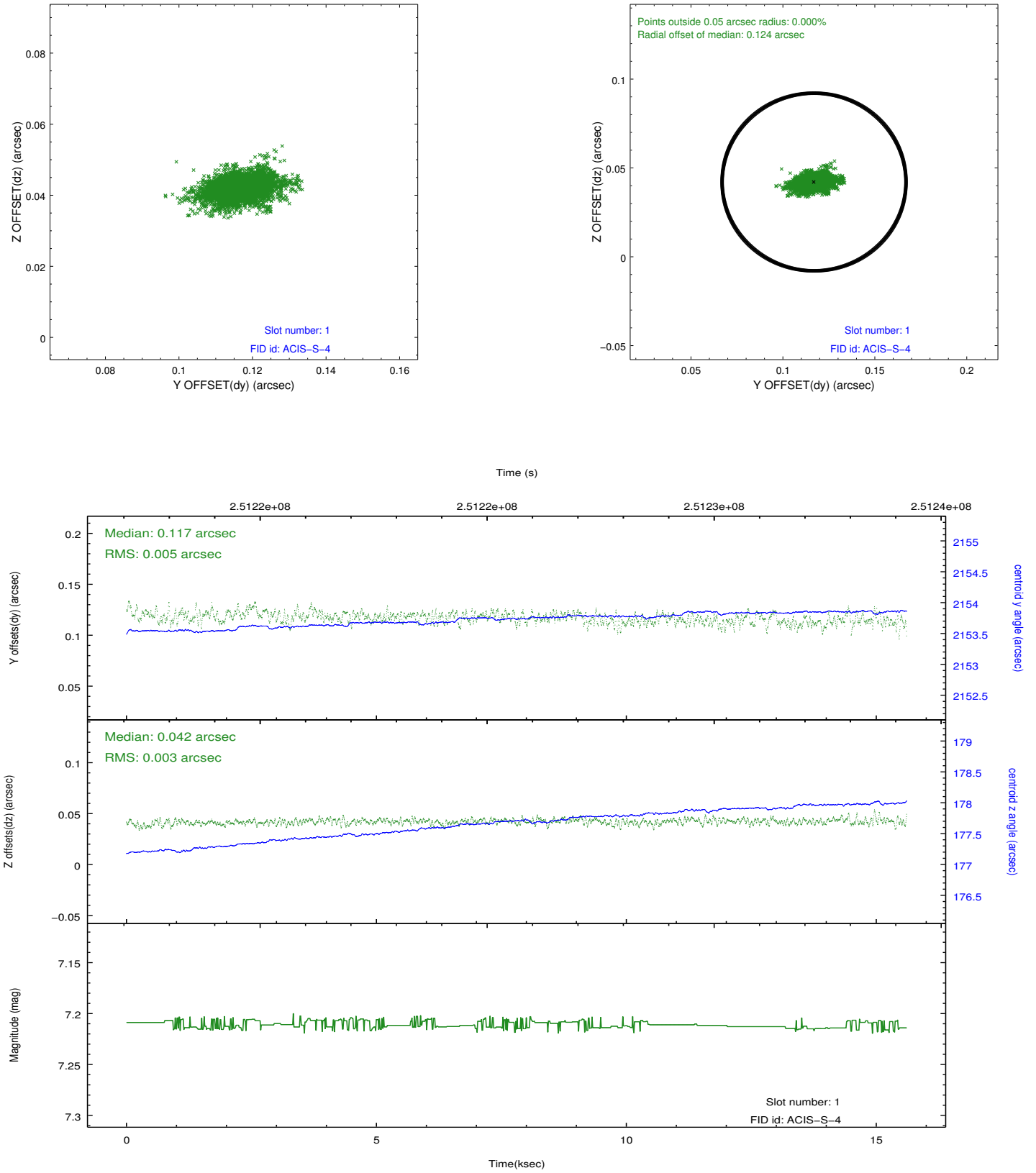


2.5 FID Slots

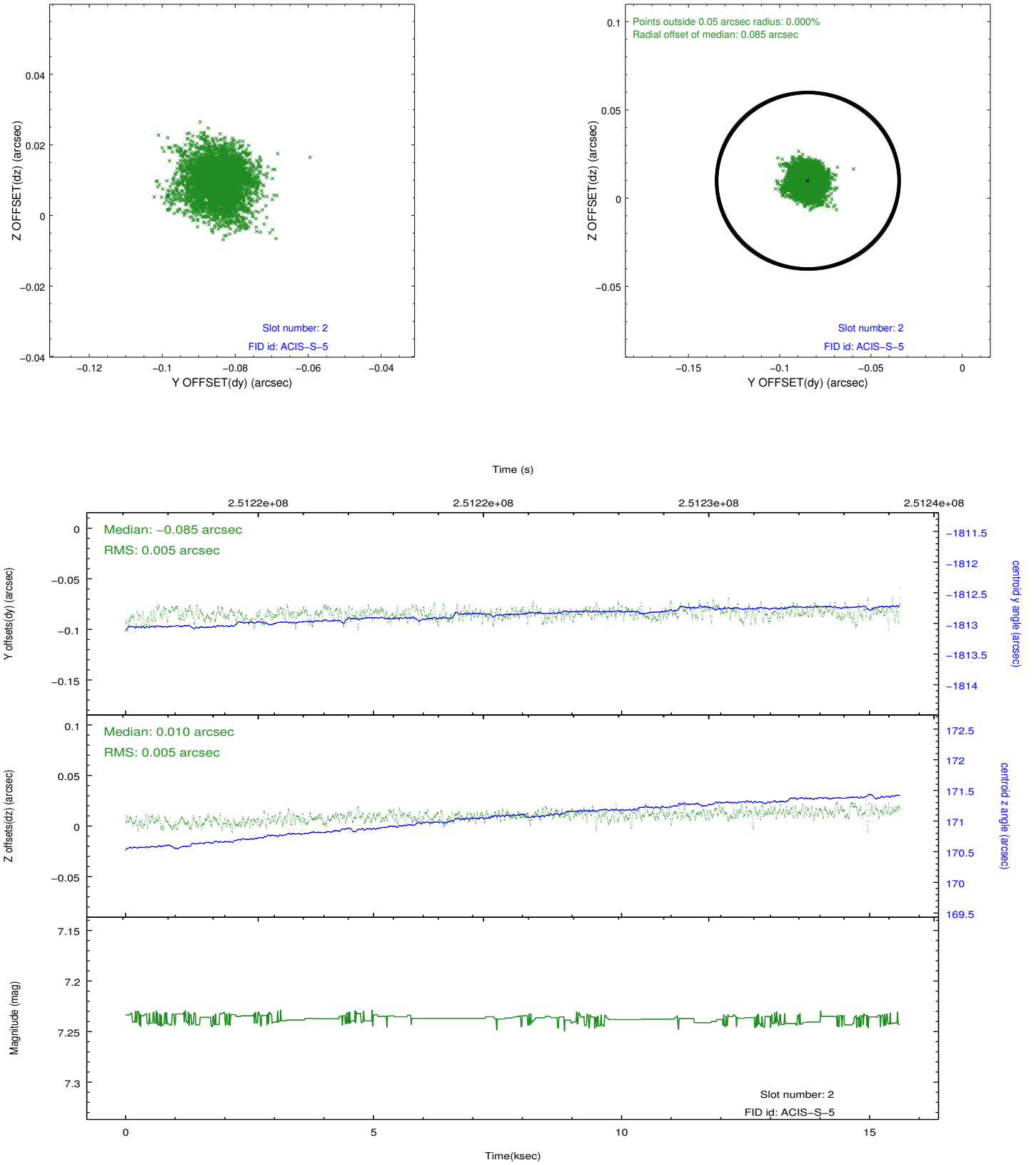
2.5.1 Slot 0



2.5.2 Slot 1



2.5.3 Slot 2



A Summary

A.1 Status

| | |
|----------------------------|------------|
| V&V Scientist | Jen Lauer |
| V&V Date (YYYY-MM-DD) | 2012.03.20 |
| V&V Edition | 1 |
| V&V Disposition and Status | OK |
| V&V Charge Time | 14.95359 |

A.2 Comments