

V&V Reference Report

L2 ASCDS Version : 8.4.3

Observation 6796 - L2 Version 2
Chandra X-Ray Center

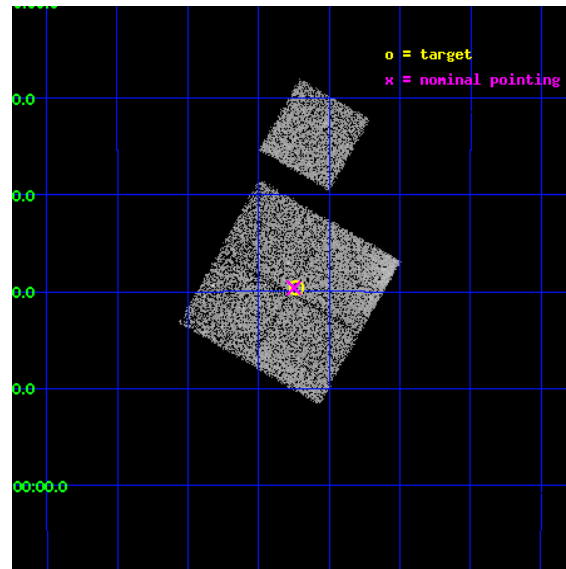
L2 Processing Date : Mar 23 2012

Contents

1	Front	2
2	OBI	3
2.1	OBI	3
2.1.1	Images	3
2.1.2	Bias	3
2.1.3	Parameters	4
2.1.4	Events	4
2.2	Compared Parameters	5
2.3	Aspect	6
2.4	Star Slots	9
2.4.1	Slot 3	9
2.4.2	Slot 4	10
2.4.3	Slot 5	11
2.4.4	Slot 6	12
2.4.5	Slot 7	13
2.5	FID Slots	14
2.5.1	Slot 0	14
2.5.2	Slot 1	15
2.5.3	Slot 2	16
A	Summary	17
A.1	Status	17
A.2	Comments	17

1 Front

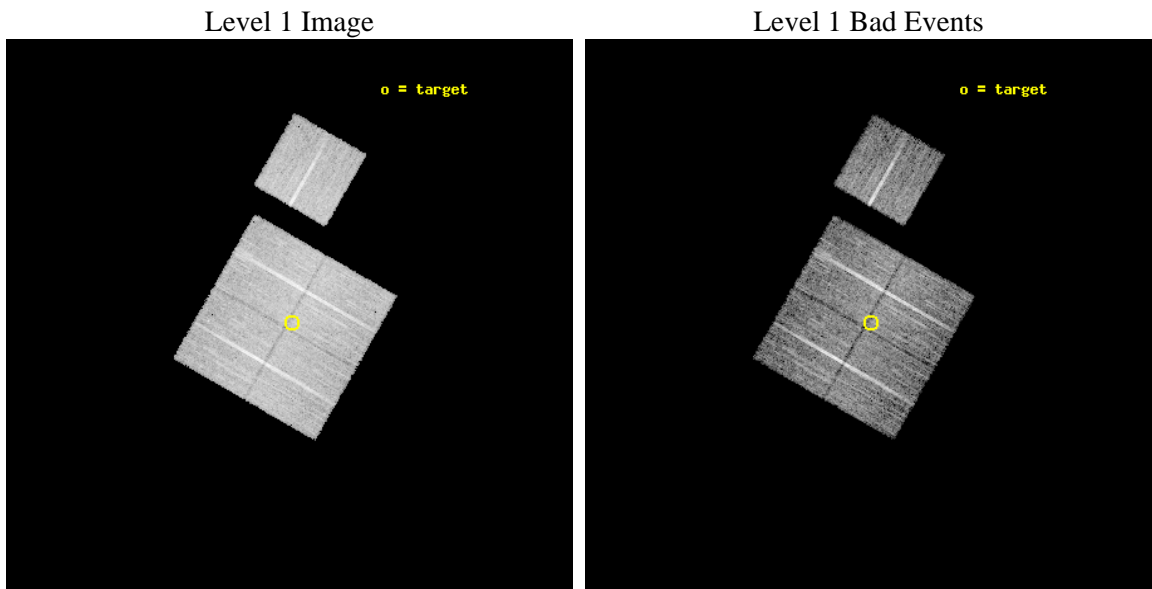
seq_num	701214	Sequence number
obs_id	6796	Observation id
title	AGN in the Outskirts of Low-Redshift Clusters of Galaxies	Proposal
observer	Prof. Paul Martini	Principal investigator
object	Abell754-P4	Source name
dtcycle	0	
cycle	P	events from which exps? Prim/Second/Both
ra_targ	137.557917	Observer's specified target RA [deg]
dec_targ	-9.660833	Observer's specified target Dec [deg]
ra_nom	137.56259222622	Nominal RA [deg]
dec_nom	-9.660208827914	Nominal Dec [deg]
roll_nom	29.814773689057	Nominal Roll [deg]
revision	2	Processing version of data
ontime	9772.9887705743	Sum of GTIs [s]
livetime	9645.2974775171	Livetime [s]
ontime0	9769.7246603072	Sum of GTIs [s]
ontime1	9772.9066905677	Sum of GTIs [s]
ontime2	9772.947730571	Sum of GTIs [s]
ontime3	9772.9887705743	Sum of GTIs [s]
ontime6	9772.8246105611	Sum of GTIs [s]
l2events	30177	Number of level 2 events



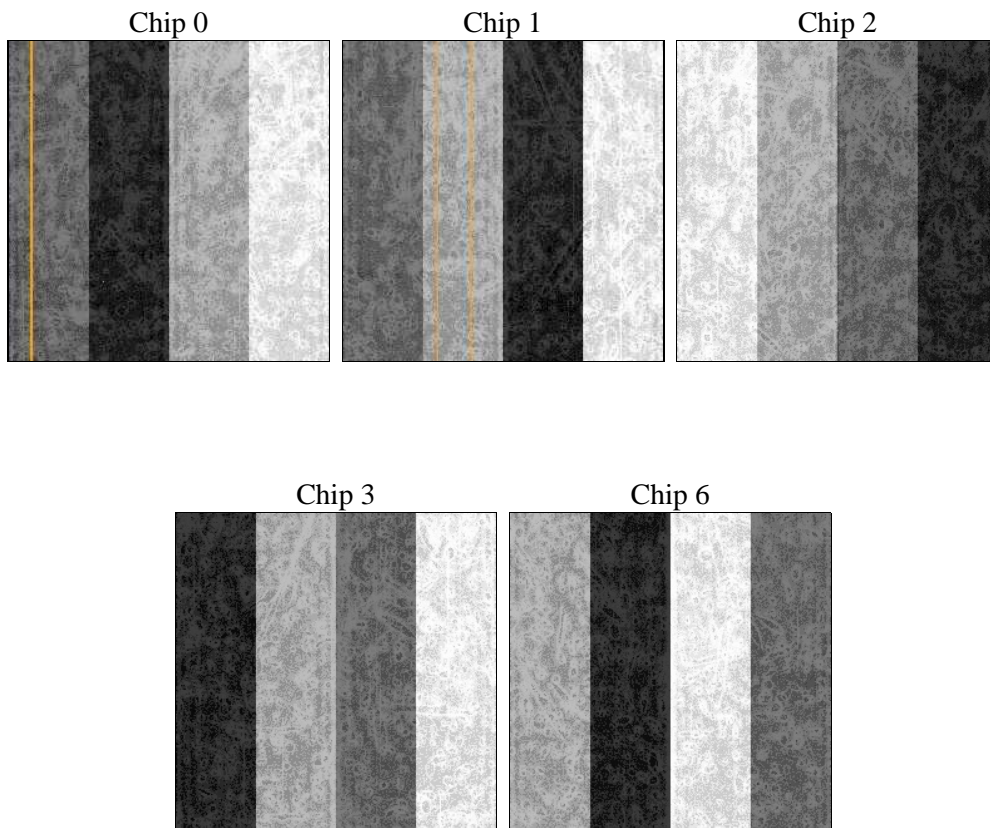
2 OBI

2.1 OBI

2.1.1 Images



2.1.2 Bias



2.1.3 Parameters

obi_num	0	Obi number	sched_exp_time	10000.000000	[s] Scheduled observation exposure time
ascdsver	8.4.3	Processing system revision	ontime	9772.9887705743	Sum of GTIs [s]
caldbver	4.4.8	 	ontime0	9769.7246603072	Sum of GTIs [s]
date	2012-03-23T14:10:23	Date and time of file creation	ontime1	9772.9066905677	Sum of GTIs [s]
revision	2	Processing version of data	ontime2	9772.947730571	Sum of GTIs [s]
			ontime3	9772.9887705743	Sum of GTIs [s]
			ontime6	9772.8246105611	Sum of GTIs [s]
			l1events	331304	Number of level 1 events

2.1.4 Events

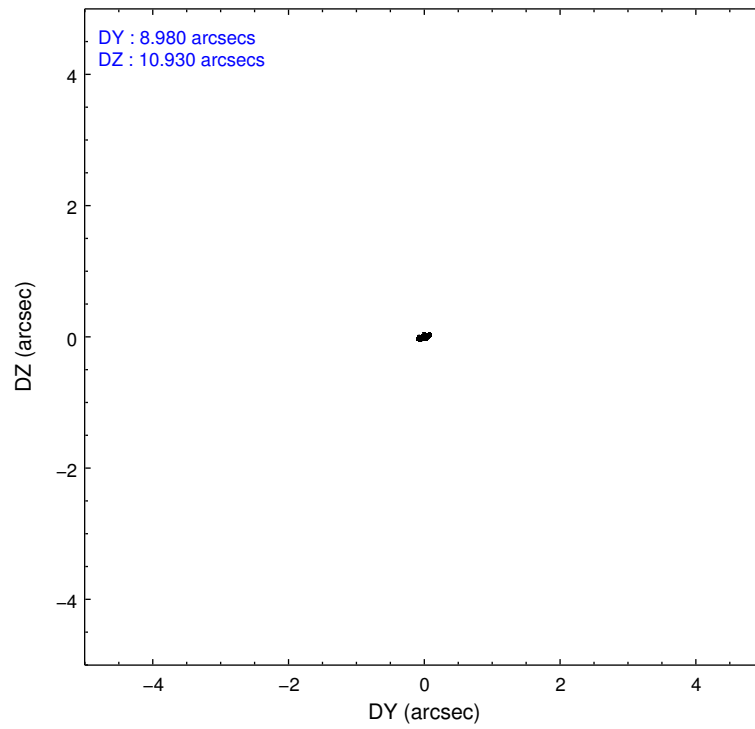
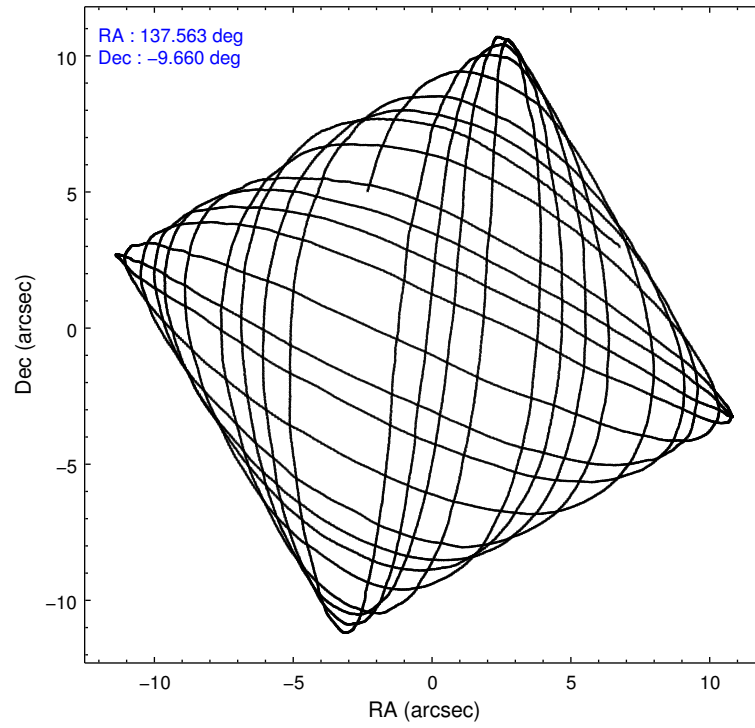
	ccd 0	ccd 1	ccd 2	ccd 3	ccd 6
level 1 events	62052	62606	70771	69462	66413
rejected events	55306	55119	64059	61378	59415
rejected %	89%	88%	90%	88%	89%

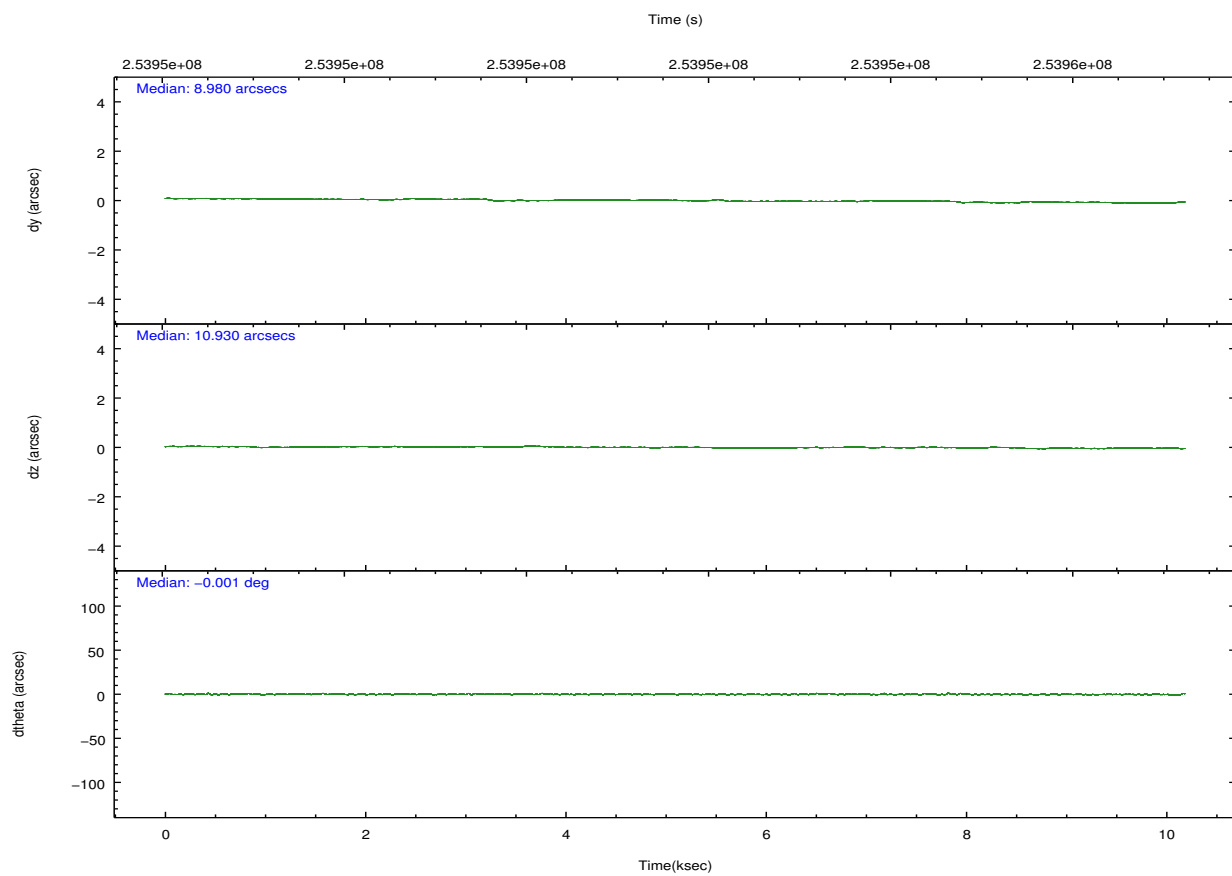
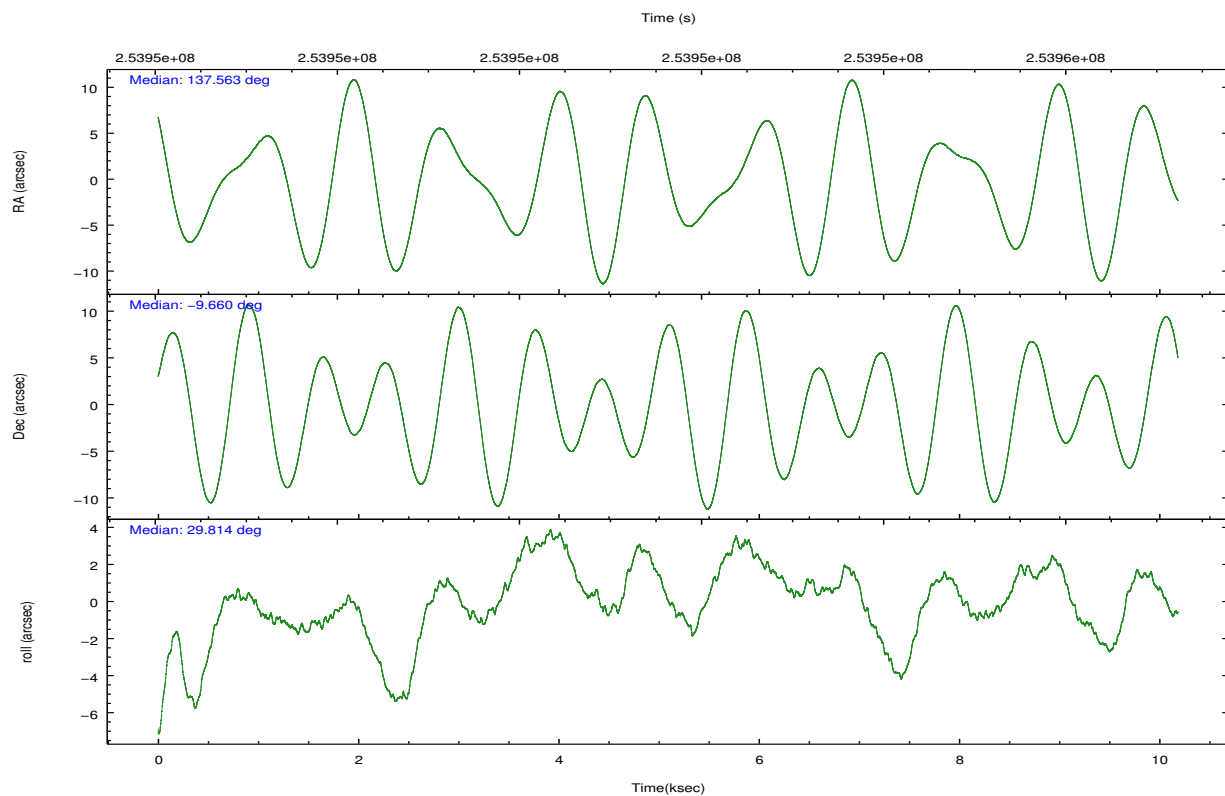
	ccd 0	ccd 1	ccd 2	ccd 3	ccd 6
grade 0 events	2425	2729	2426	3685	2476
	3%	4%	3%	5%	3%
grade 1 events	27	36	42	38	37
	0%	0%	0%	0%	0%
grade 2 events	1535	1609	1534	1504	1459
	2%	2%	2%	2%	2%
grade 3 events	825	846	760	836	794
	1%	1%	1%	1%	1%
grade 4 events	708	776	761	768	772
	1%	1%	1%	1%	1%
grade 5 events	2321	2586	2213	2716	2655
	3%	4%	3%	3%	3%
grade 6 events	1256	1527	1233	1296	1505
	2%	2%	1%	1%	2%
grade 7 events	52955	52497	61802	58619	56715
	85%	83%	87%	84%	85%

2.2 Compared Parameters

Parameter	Planned	Actual	Parameter	Planned	Actual
Instrument	ACIS	ACIS	Obspar format version number	7	7
Detector	ACIS-01236	ACIS-01236	Obspar file type	PREDICTED	ACTUAL
Grating	NONE	NONE	Obspar update status	NONE	UPDATED
Data mode	VFAINT	VFAINT	Number of optional ACIS chips dropped	0	0
Observation mode	POINTING	POINTING	On-chip summing requested	N	N
[deg] Pointing RA	137.548716	137.5625922262176	Subarray requested	NONE	NONE
[deg] Pointing Dec	-9.684002	-9.660208827913962	Alternating exposures requested	N	N
[deg] Pointing Roll	29.603760	29.81477368905654	[s] Primary exposure time	0.000000	3.1
[mm] SIM focus pos	-0.782348	-0.7809083437167272			
[mm] SIM defocus	0	0.001439871863259334			
[mm] SIM translation stage pos	-233.592463	-233.5874344608287			
[mm] SIM translation stage offset	0	-0.005018542100998502			
[s] Observation start time (MET)	253946725.184000	253946348.18479			
Observation start date	2006-01-18T04:44:20	2006-01-18T04:39:08			
[s] Observation end time (MET)	253956725.184000	253958011.66033			
Observation end date	2006-01-18T07:31:00	2006-01-18T07:53:31			
Read mode	TIMED	TIMED			

2.3 Aspect



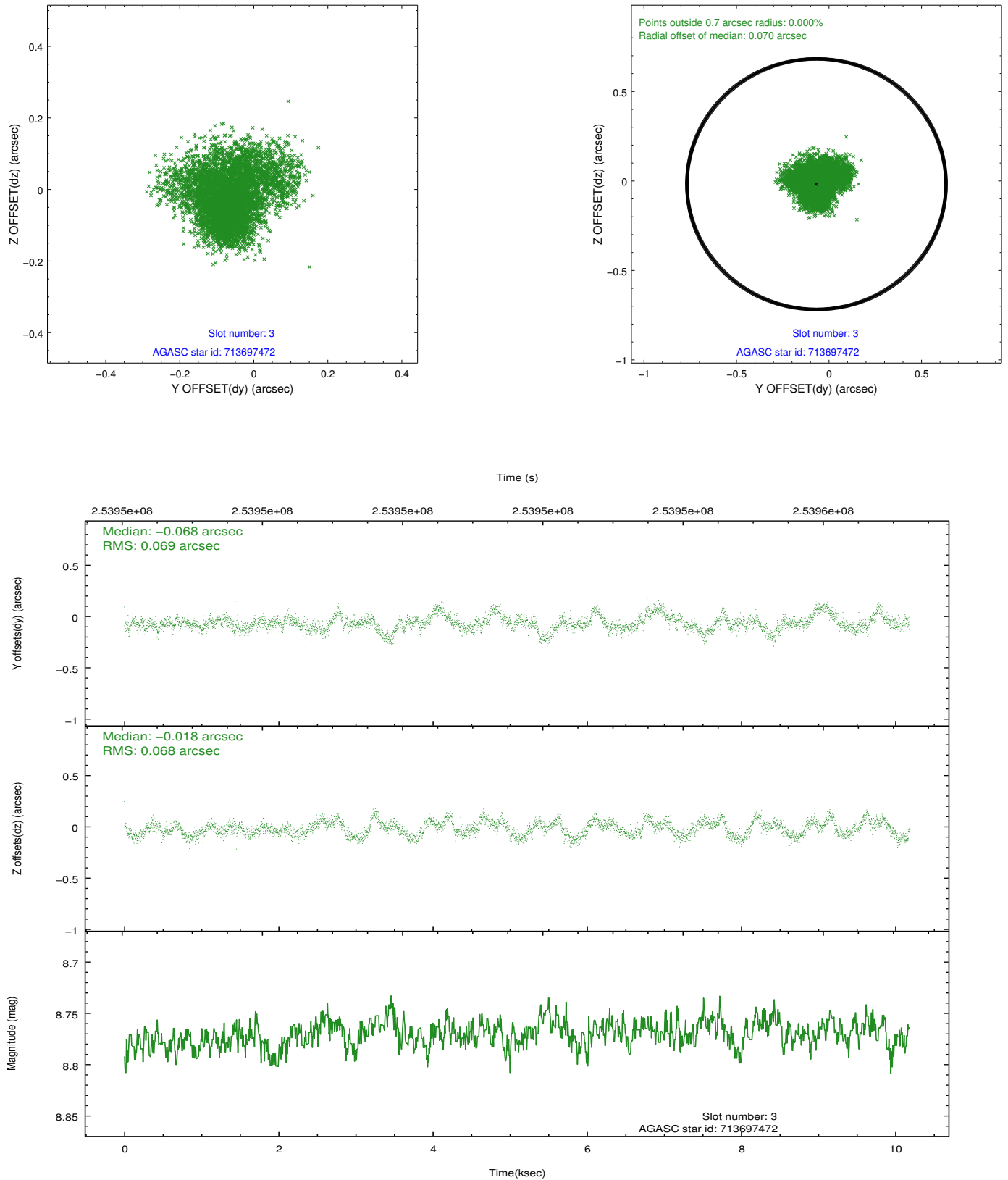


Slot Statistics

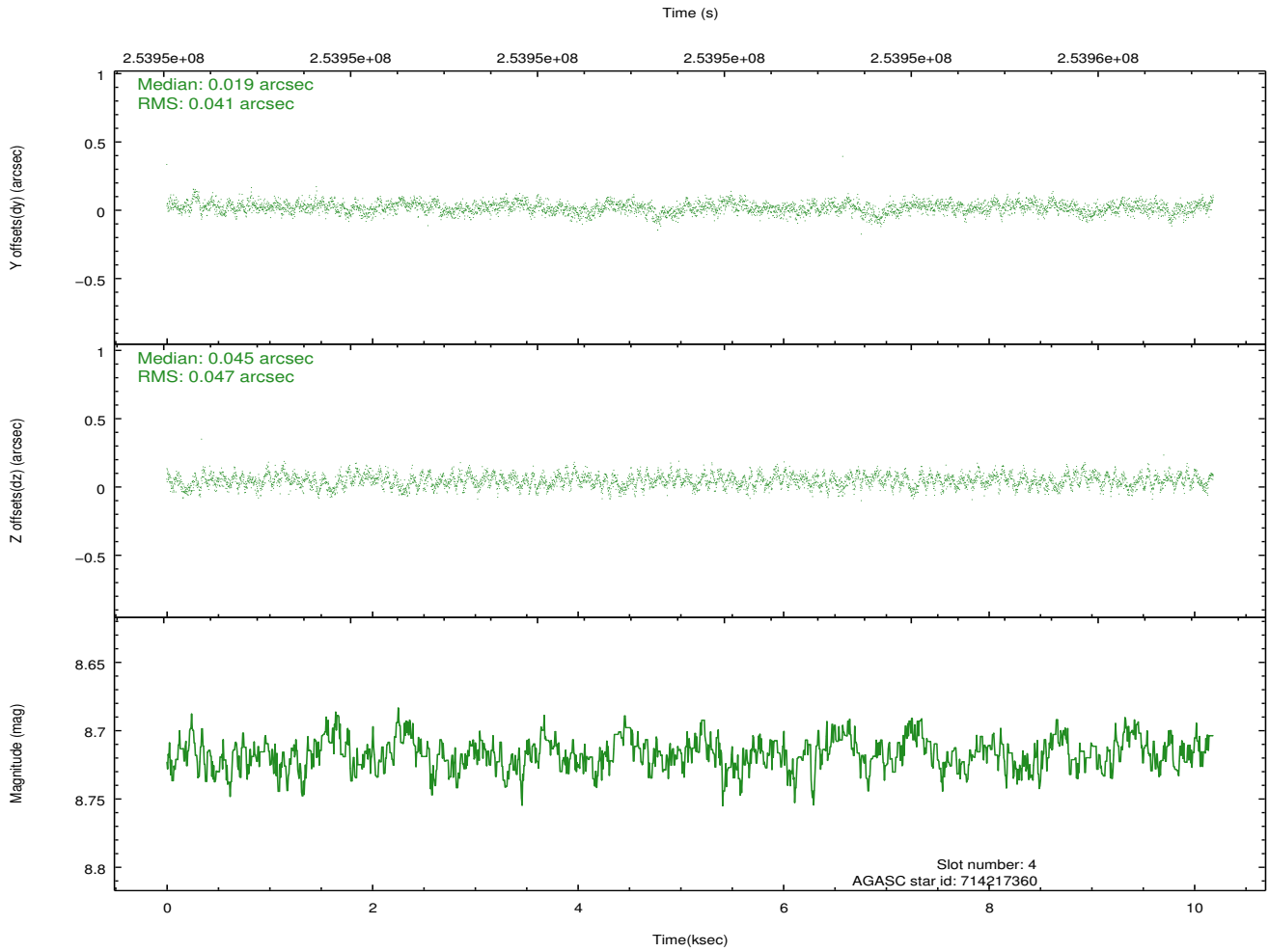
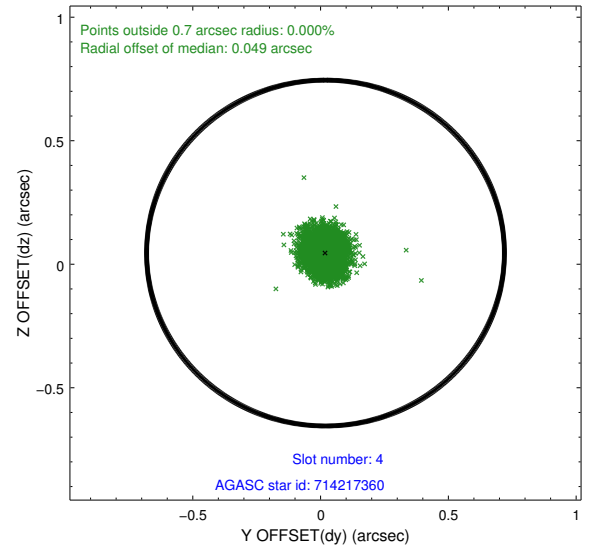
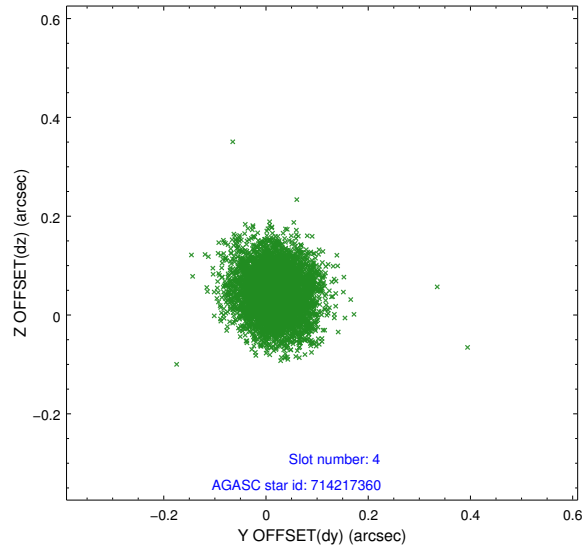
slot	status	id	mag	n_pts	med_dy	med_dz	dr1	dr2	ra	dec	mean_y	mean_z
0	FID	ACIS-I-1	7.24	2484	0.055	-0.036	0.006	0.011	0.000000	0.000000	930.69	-834.47
1	FID	ACIS-I-5	7.23	2484	-0.213	0.055	0.006	0.011	0.000000	0.000000	-1817.37	1062.89
2	FID	ACIS-I-6	7.25	2484	0.067	0.052	0.007	0.011	0.000000	0.000000	395.72	1707.94
3	GUIDE	713697472	8.77	4969	-0.068	-0.018	0.104	0.168	137.813086	-8.899103	2212.95	1992.04
4	GUIDE	714217360	8.72	4966	0.019	0.045	0.067	0.106	137.273046	-10.133687	-1648.83	-924.96
5	GUIDE	714218056	8.25	4968	0.021	-0.021	0.067	0.113	136.949916	-9.853677	-2149.61	516.17
6	GUIDE	714220096	8.14	4968	0.031	-0.072	0.067	0.109	137.167337	-9.384108	-645.54	1607.65
7	GUIDE	714222888	7.22	4967	-0.009	0.066	0.057	0.088	137.419411	-9.937881	-850.46	-567.90

2.4 Star Slots

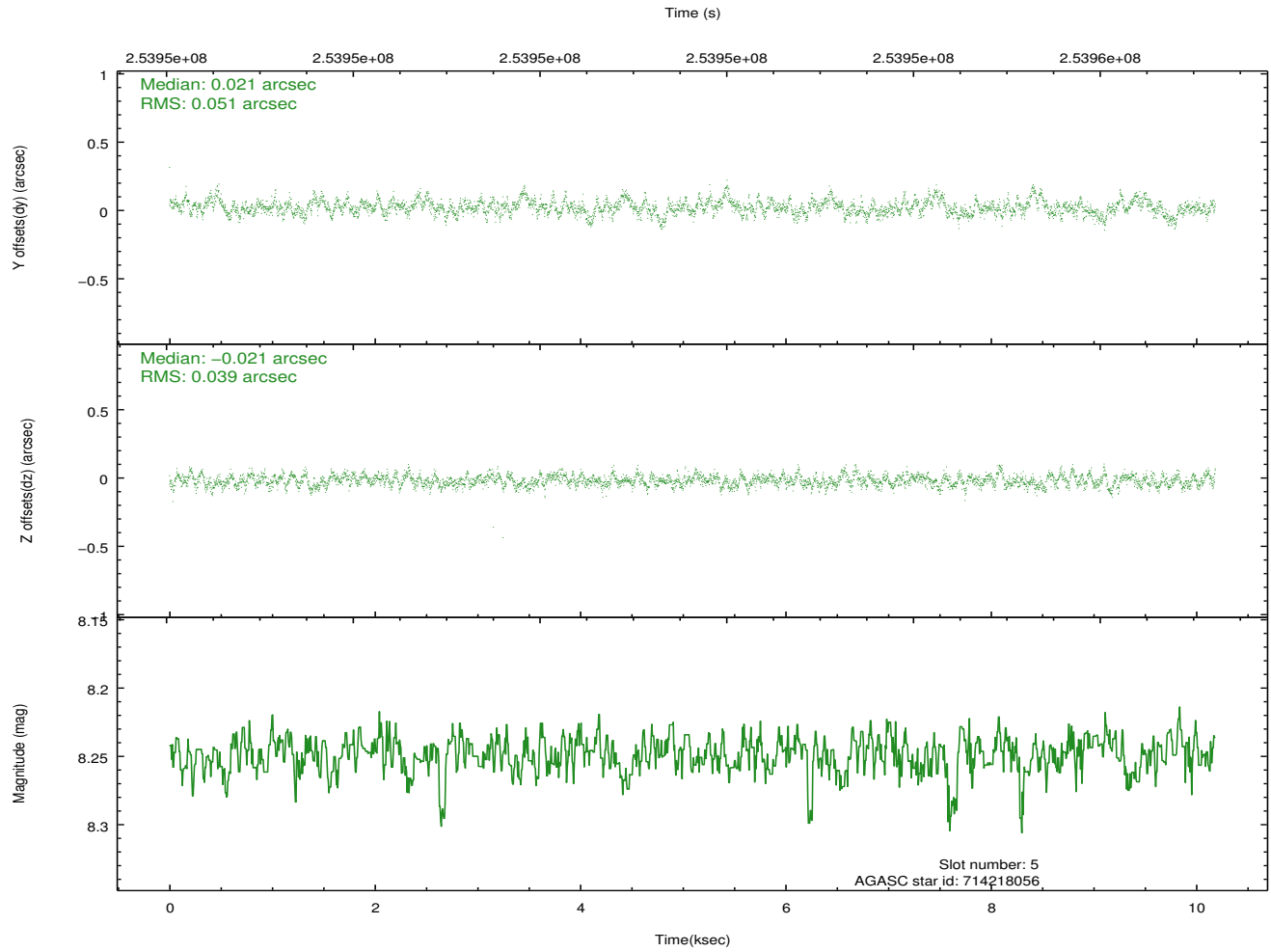
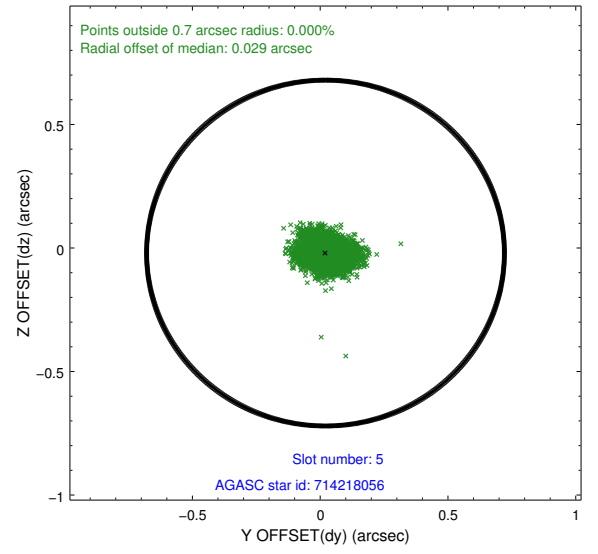
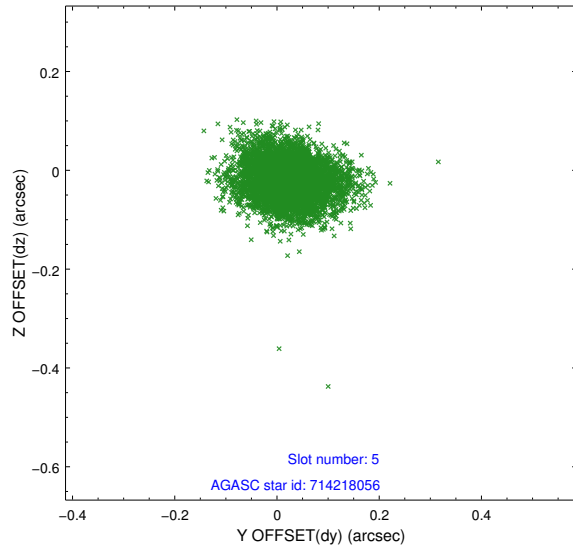
2.4.1 Slot 3



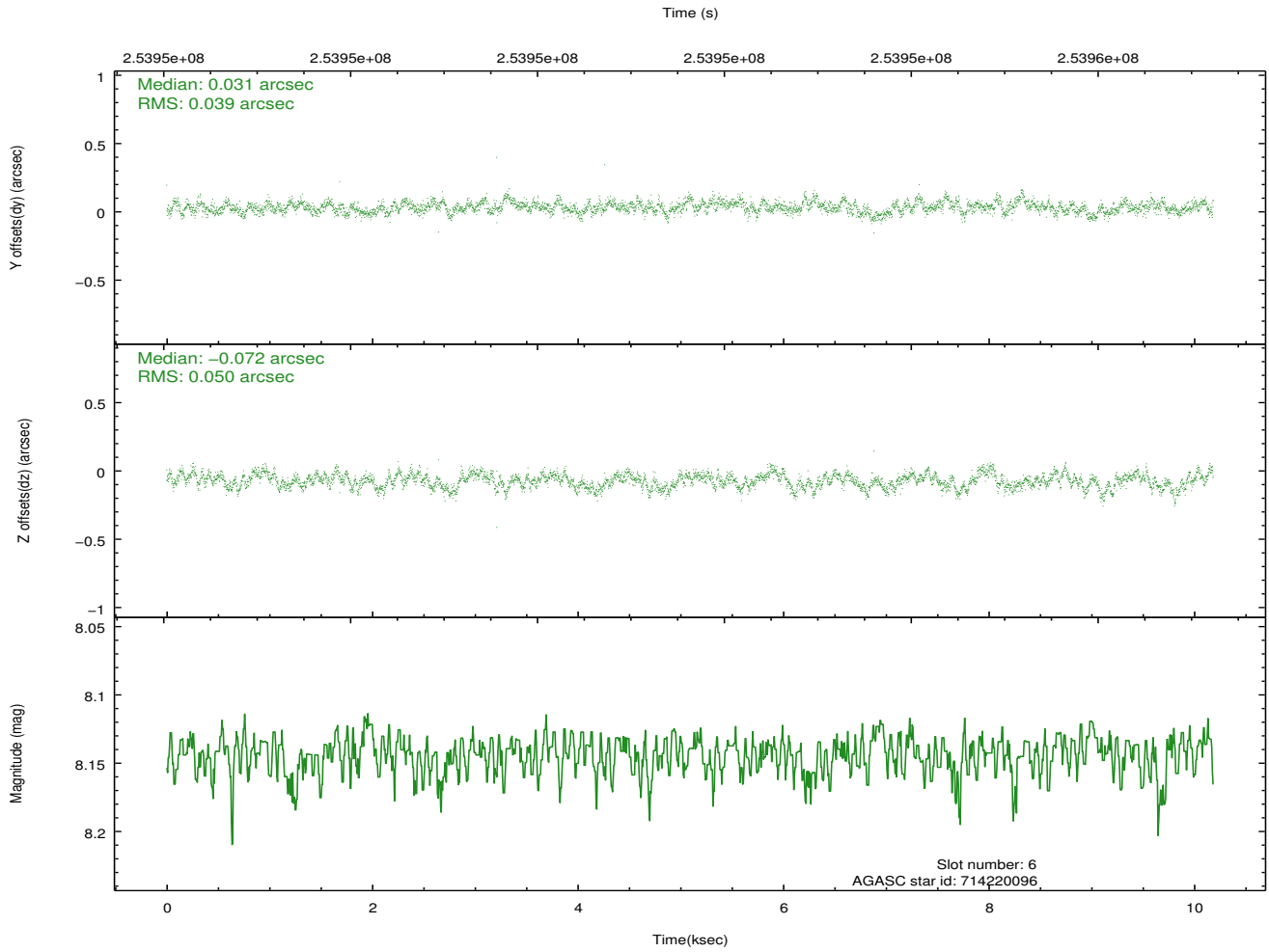
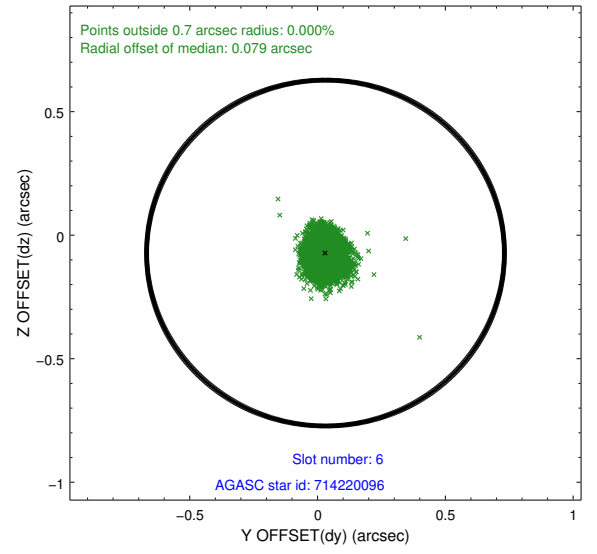
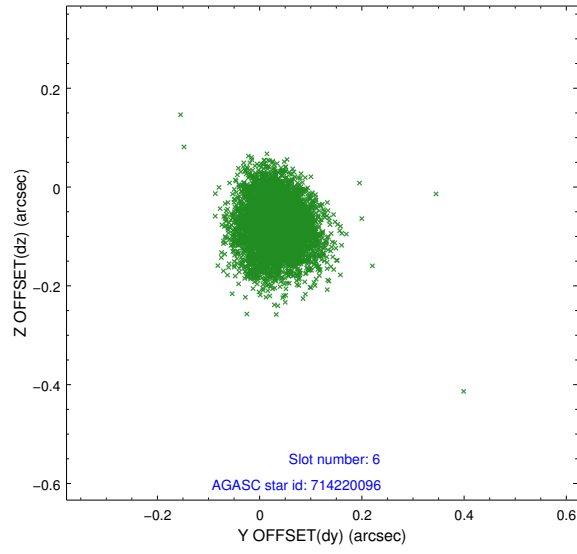
2.4.2 Slot 4



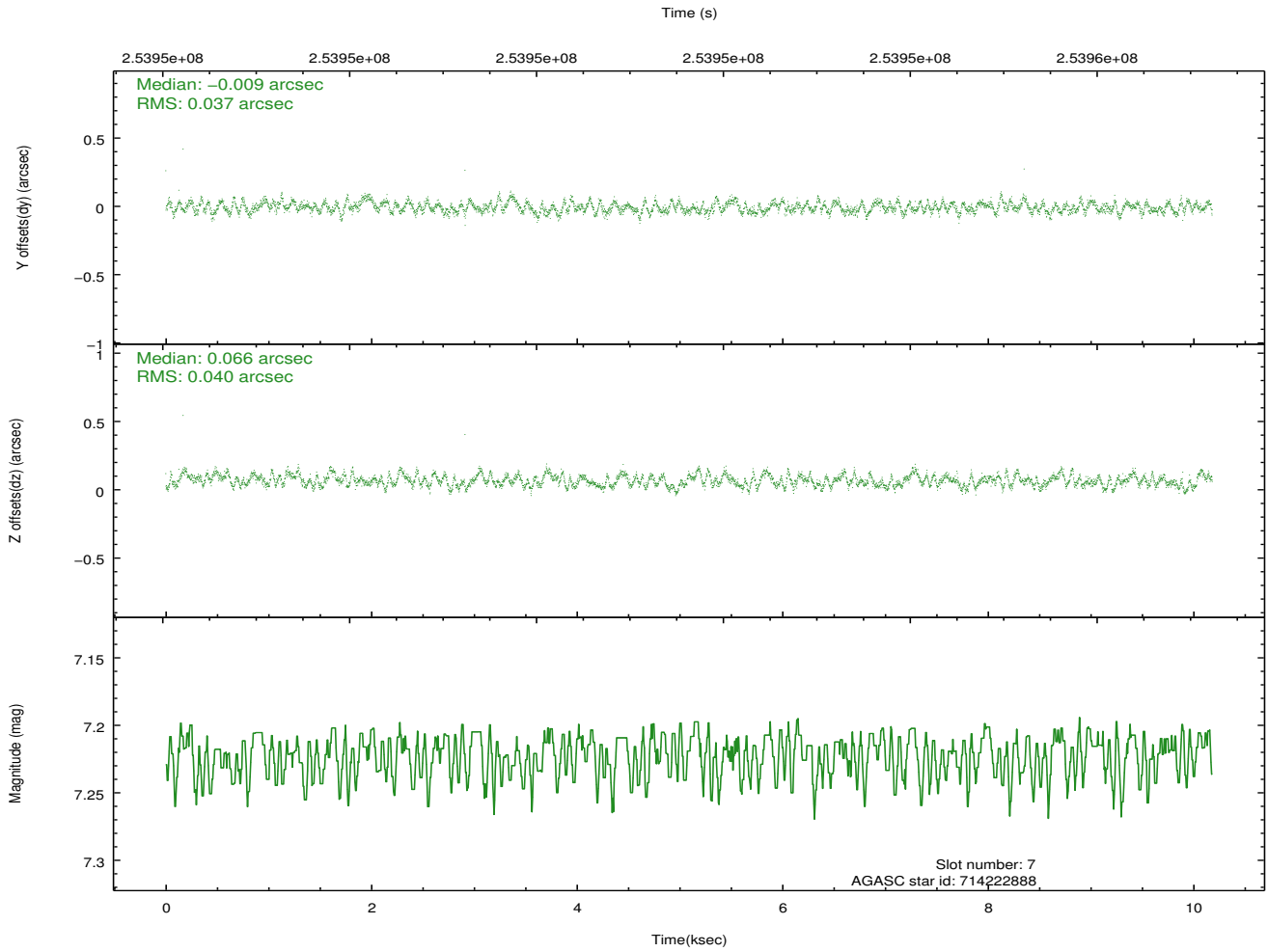
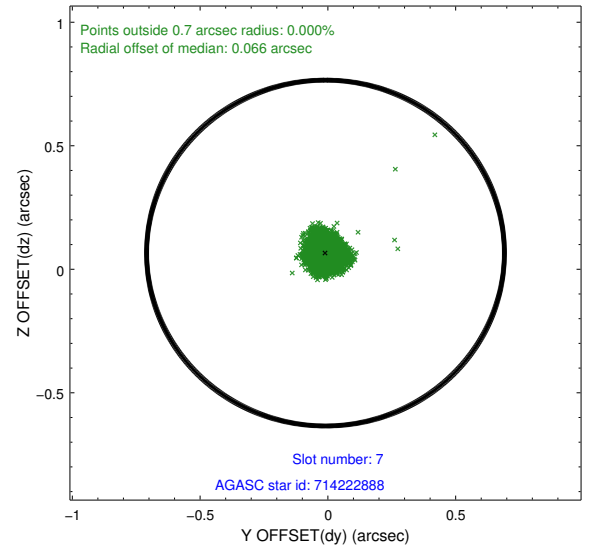
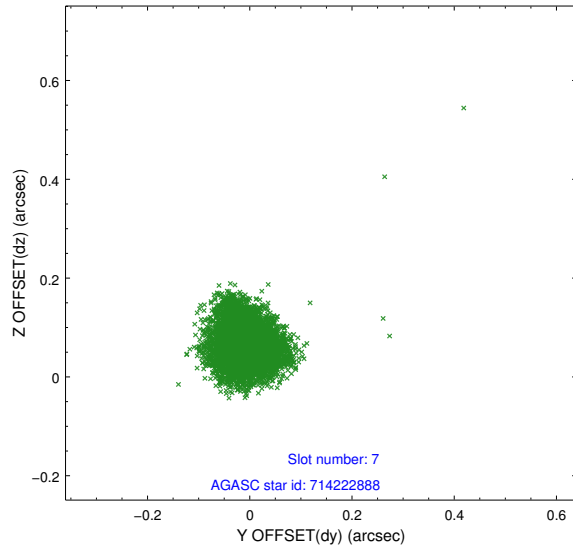
2.4.3 Slot 5



2.4.4 Slot 6

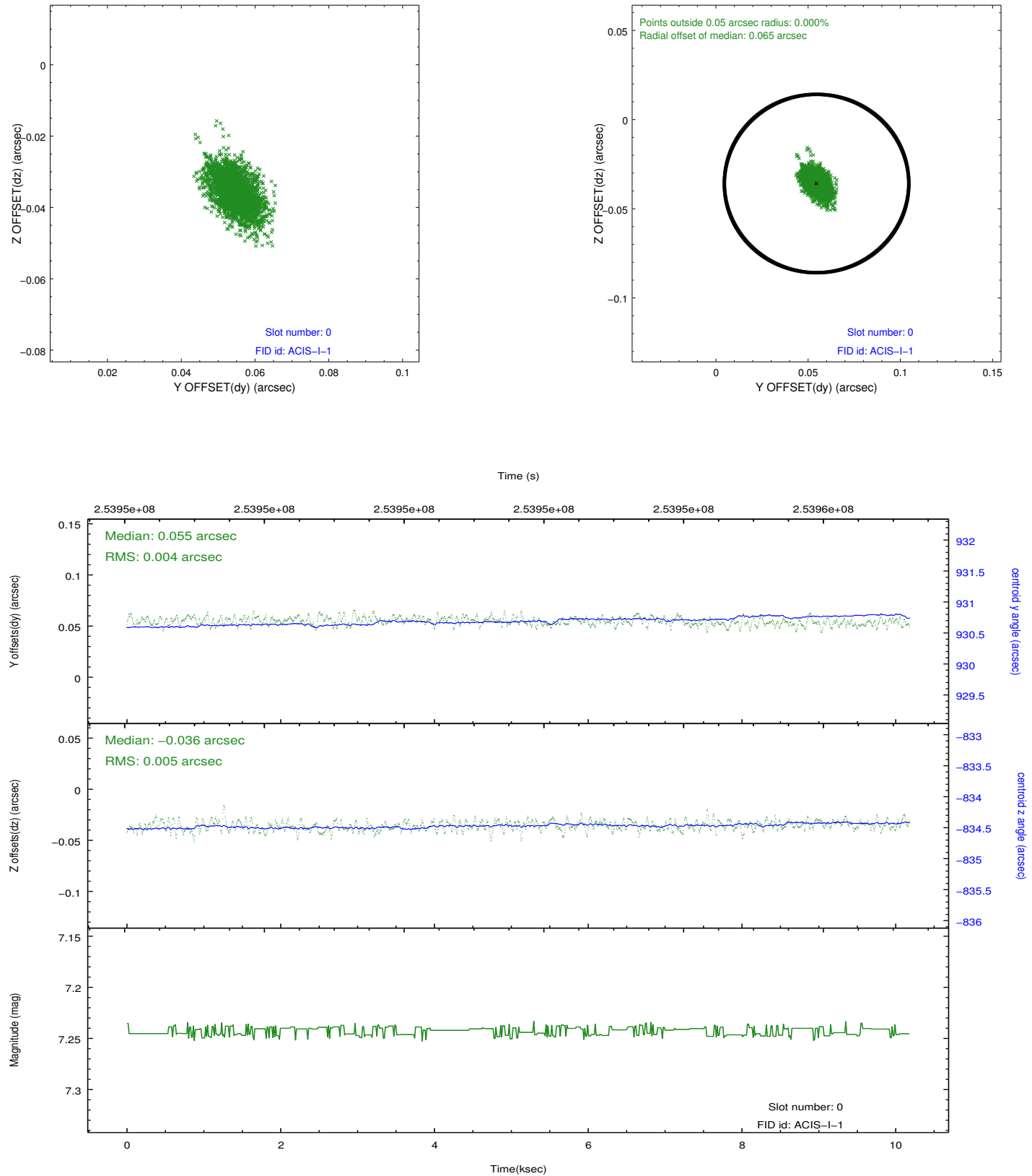


2.4.5 Slot 7

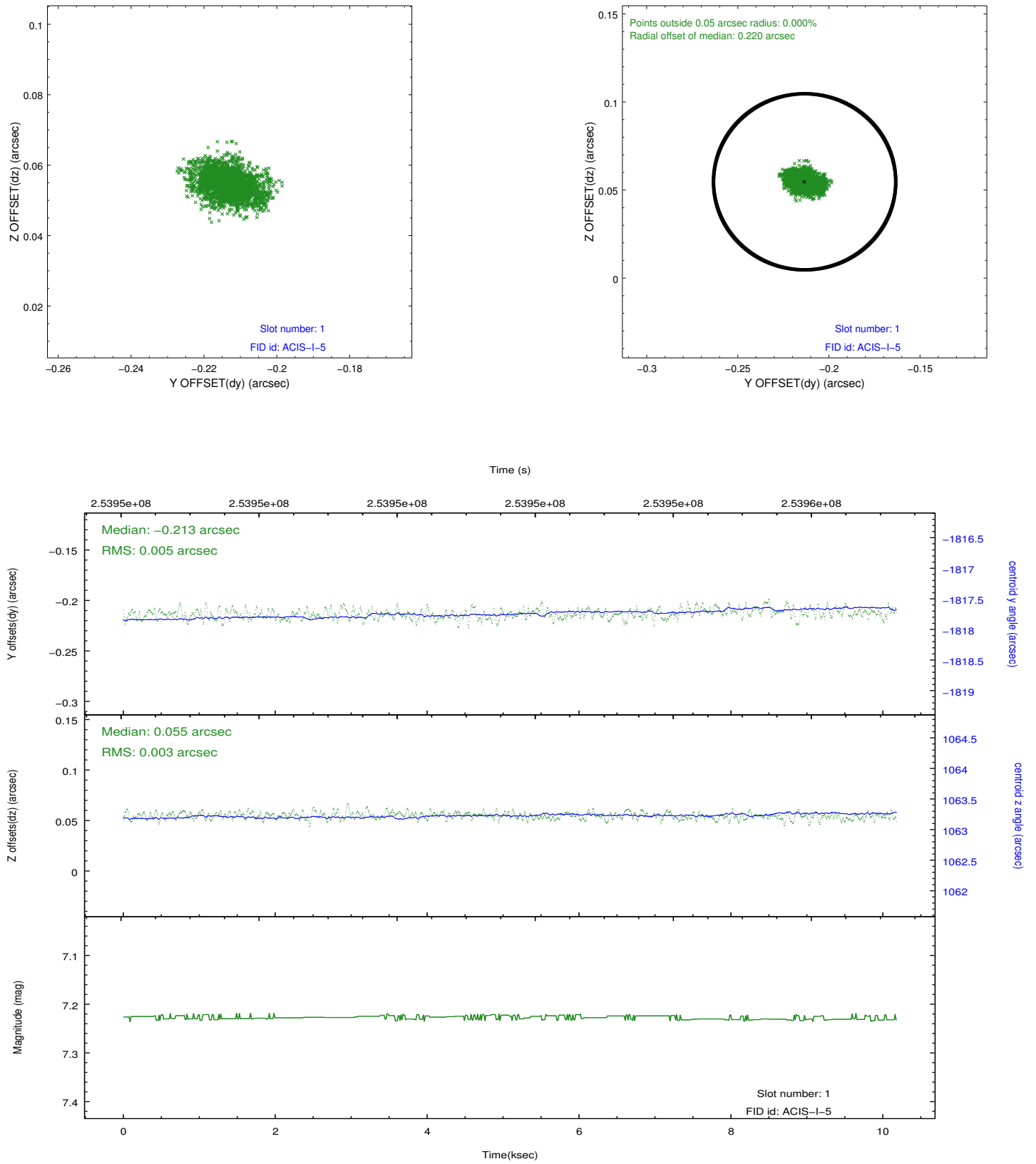


2.5 FID Slots

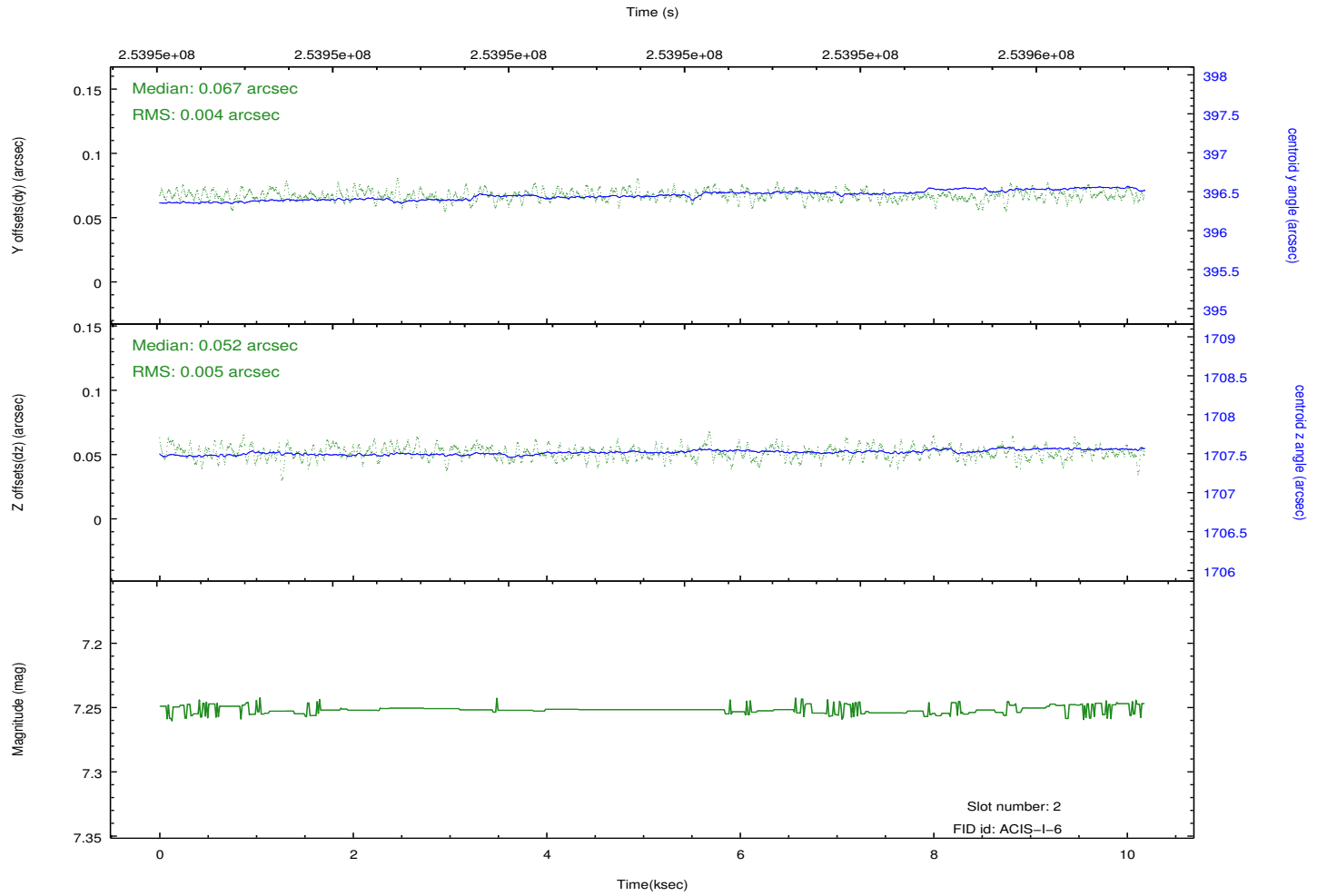
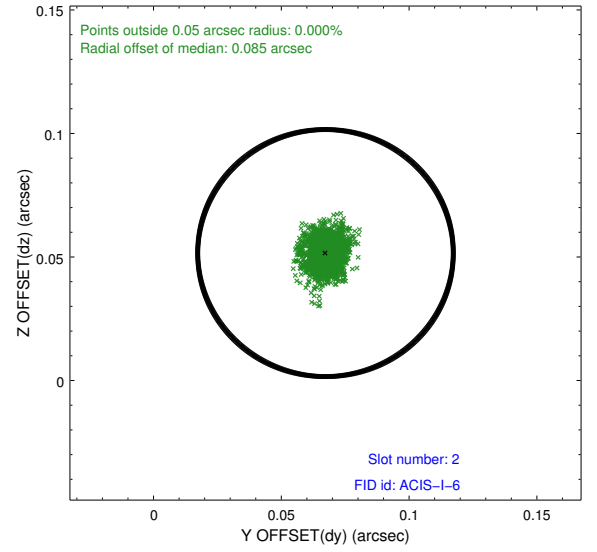
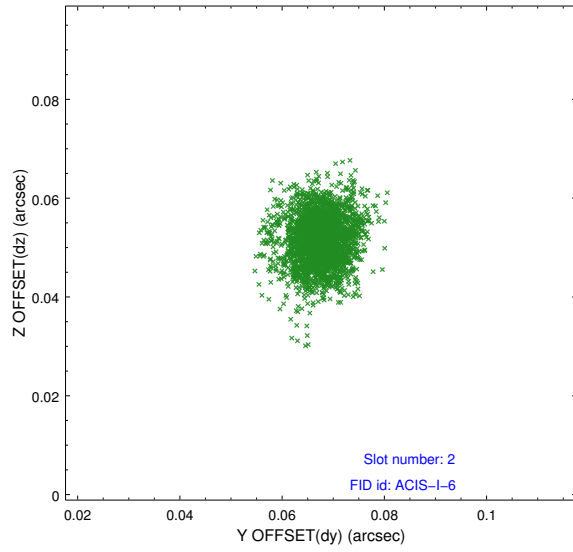
2.5.1 Slot 0



2.5.2 Slot 1



2.5.3 Slot 2



A Summary

A.1 Status

V&V Scientist	Jen Lauer
V&V Date (YYYY-MM-DD)	2012.03.23
V&V Edition	1
V&V Disposition and Status	OK
V&V Charge Time	9.77429998

A.2 Comments