

# V&V Reference Report

## L2 ASCDS Version : 8.4.3

Observation 6756 - L2 Version 2  
Chandra X-Ray Center

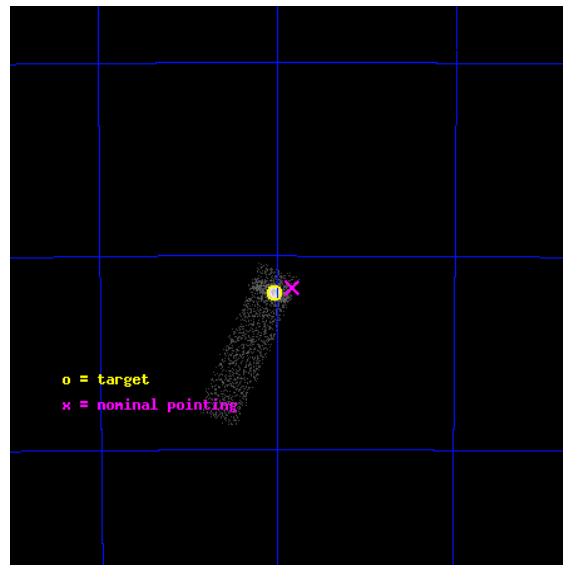
L2 Processing Date : Mar 28 2012

## Contents

<b>1</b>	<b>Front</b>	<b>2</b>
<b>2</b>	<b>OBI</b>	<b>3</b>
2.1	OBI . . . . .	3
2.1.1	Images . . . . .	3
2.1.2	Bias . . . . .	3
2.1.3	Parameters . . . . .	4
2.1.4	Events . . . . .	4
2.2	Compared Parameters . . . . .	5
2.3	Aspect . . . . .	6
2.4	Star Slots . . . . .	9
2.4.1	Slot 3 . . . . .	9
2.4.2	Slot 4 . . . . .	10
2.4.3	Slot 5 . . . . .	11
2.4.4	Slot 6 . . . . .	12
2.4.5	Slot 7 . . . . .	13
2.5	FID Slots . . . . .	14
2.5.1	Slot 0 . . . . .	14
2.5.2	Slot 1 . . . . .	15
2.5.3	Slot 2 . . . . .	16
<b>A</b>	<b>Summary</b>	<b>17</b>
A.1	Status . . . . .	17
A.2	Comments . . . . .	17

# 1 Front

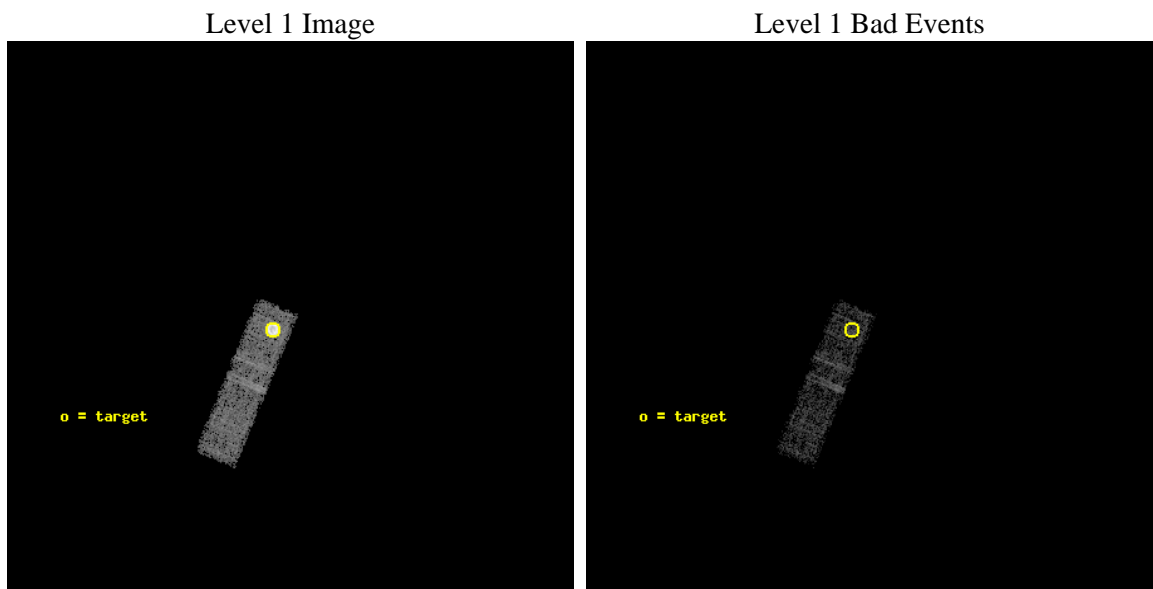
seq_num	590439	Sequence number
obs_id	6756	Observation id
title	AO7 ACIS-I Calibration Observations of E0102-72	Proposal title
observer	Dr. CXC Calibration	Principal investigator
object	E0102-72[I3,-120,-0.5,0.5,0]	Source name
dtcycle	0	&#160
cycle	P	events from which exps? Prim/Second/Both
ra_targ	16.01	Observer's specified target RA [deg]
dec_targ	-72.032028	Observer's specified target Dec [deg]
ra_nom	15.959565737656	Nominal RA [deg]
dec_nom	-72.027495755482	Nominal Dec [deg]
roll_nom	202.83945164047	Nominal Roll [deg]
revision	2	Processing version of data
ontime	7527.0090218782	Sum of GTIs [s]
livetime	7159.7156110323	Livetime [s]
ontime3	7527.0090218782	Sum of GTIs [s]
l2events	25309	Number of level 2 events



## 2 OBI

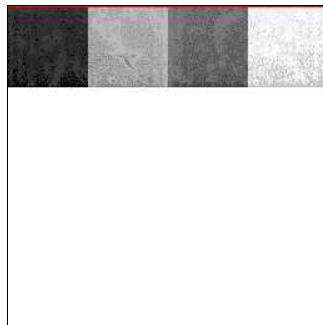
### 2.1 OBI

#### 2.1.1 Images



#### 2.1.2 Bias

Chip 3



### 2.1.3 Parameters

obi_num	0	Obi number	sched_exp_time	7500.000000	[s] Scheduled observation exposure time
ascdsver	8.4.3.1	Processing system revision	ontime	7527.0090218782	Sum of GTIs [s]
caldsver	4.4.8	&#160	ontime3	7527.0090218782	Sum of GTIs [s]
date	2012-03-28T03:02:25	Date and time of file creation	l1events	41587	Number of level 1 events
revision	2	Processing version of data			

### 2.1.4 Events

	<b>ccd 3</b>
level 1 events	41587
rejected events	15944
rejected %	38%

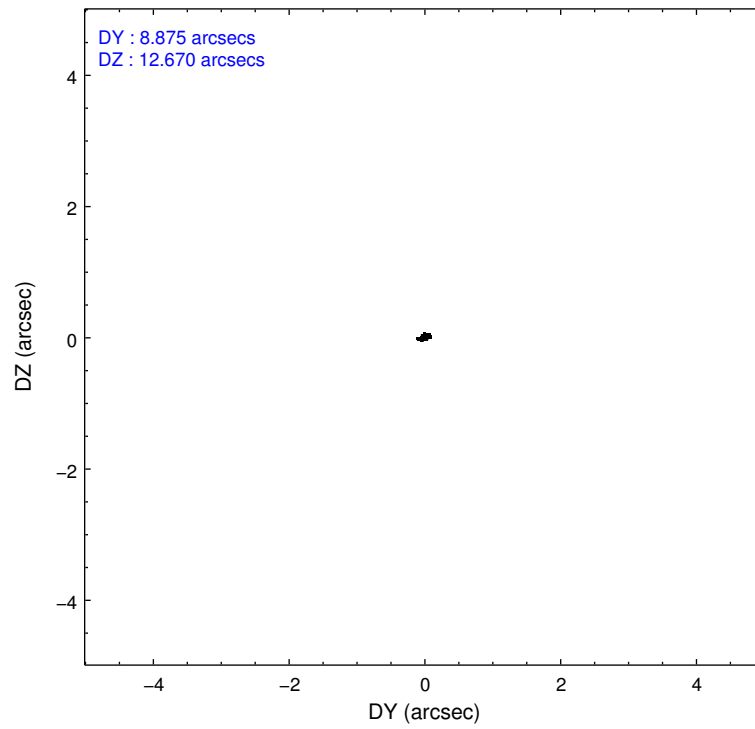
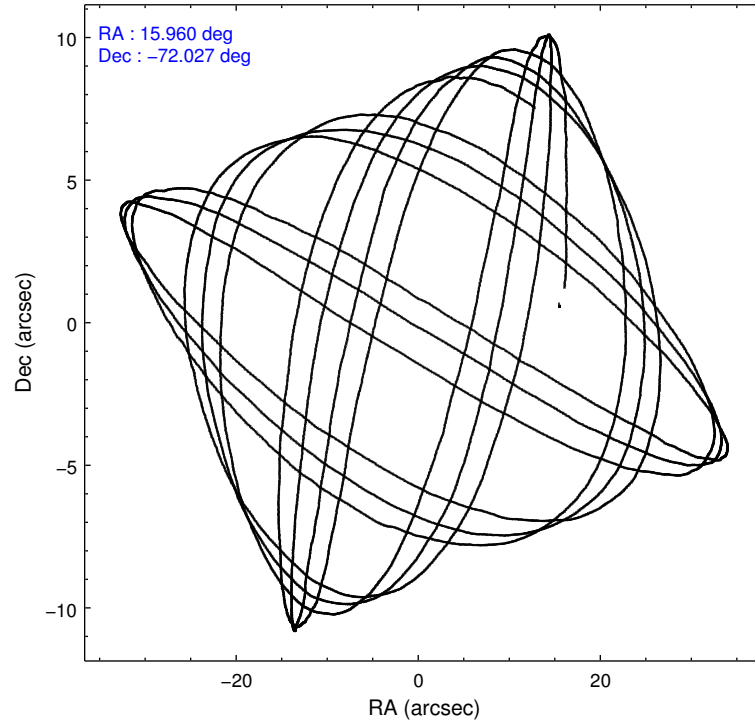
	<b>ccd 3</b>
grade 0 events	22218
	53%
grade 1 events	65
	0%
grade 2 events	1845
	4%
grade 3 events	665
	1%
grade 4 events	565
	1%
grade 5 events	498
	1%
grade 6 events	350
	0%
grade 7 events	15381
	36%

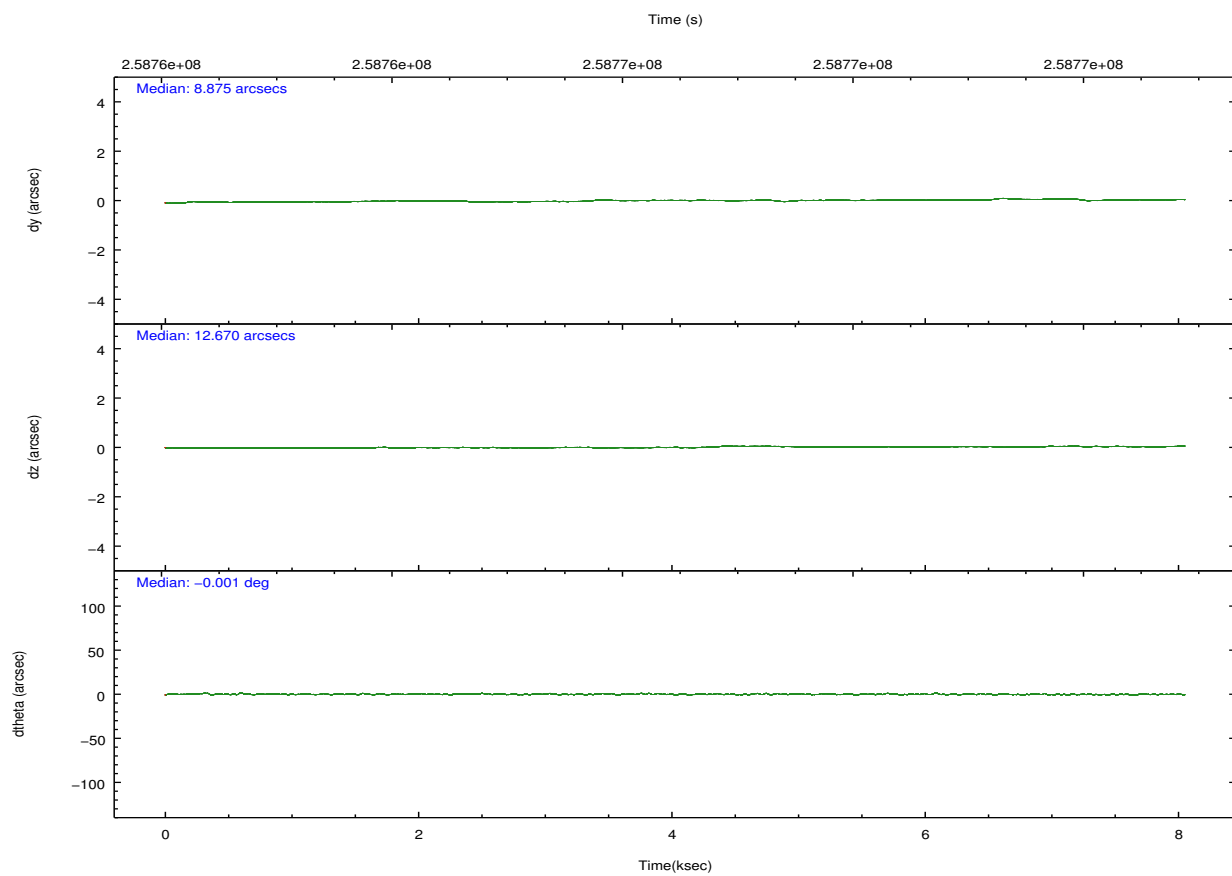
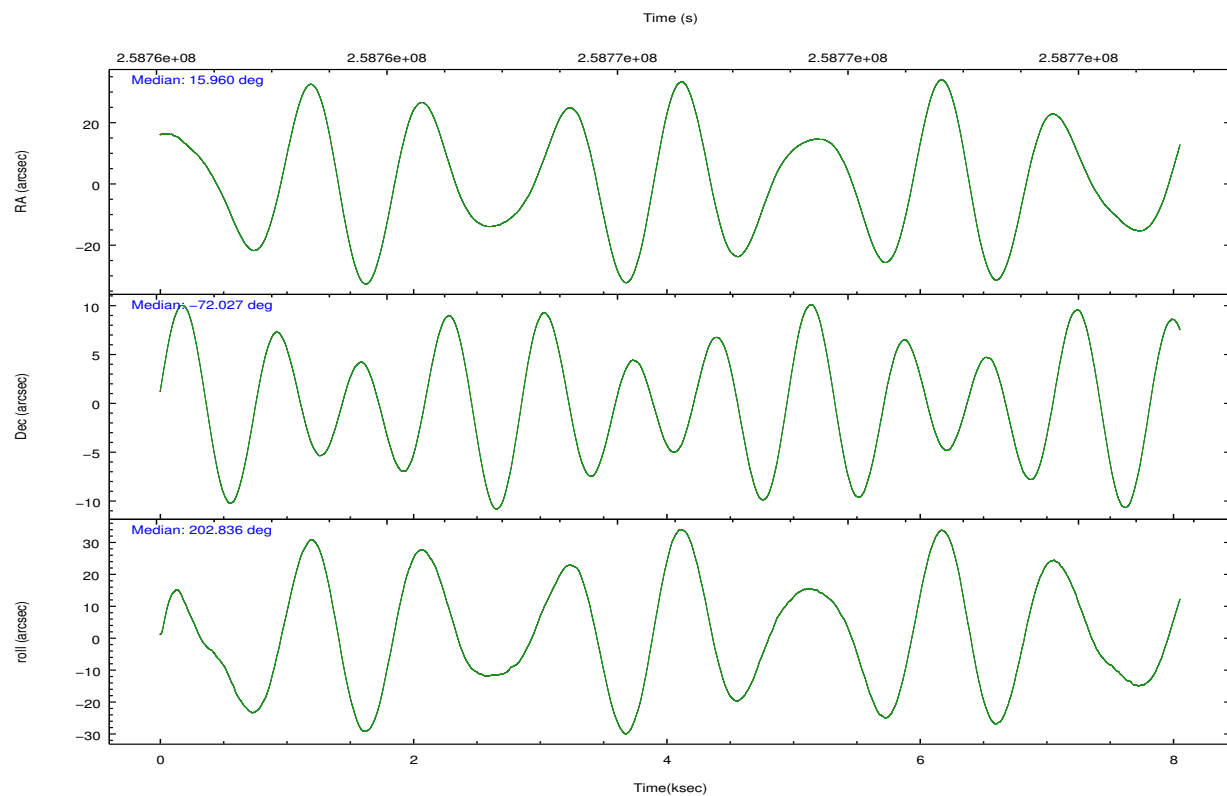


## 2.2 Compared Parameters

Parameter	Planned	Actual	Parameter	Planned	Actual
Instrument	ACIS	ACIS	Obspar format version number	7	7
Detector	ACIS-3	ACIS-3	Obspar file type	PREDICTED	ACTUAL
Grating	NONE	NONE	Obspar update status	NONE	UPDATED
Data mode	VFAINT	VFAINT	Number of optional ACIS chips dropped	0	0
Observation mode	POINTING	POINTING	On-chip summing requested	N	N
[deg] Pointing RA	16.012904	15.95956573765597	Subarray requested	CUSTOM	1/4
[deg] Pointing Dec	-72.005624	-72.02749575548202	Subarray start row	768	768
[deg] Pointing Roll	202.681514	202.8394516404655	Subarray row count	256	256
[s] Window start time (MET)	247190464.184000	247190464.184000	Alternating exposures requested	N	N
[s] Window stop time (MET)	260150465.184000	260150465.184000	[s] Primary exposure time	0.000000	0.8
[mm] SIM focus pos	-0.782348	-0.7809083437167272			
[mm] SIM defocus	0	0.001439871863259334			
[mm] SIM translation stage pos	-233.592463	-233.5874344608287			
[mm] SIM translation stage offset	0	-0.005018542100998502			
[s] Observation start time (MET)	258762984.184000	258762240.18343			
Observation start date	2006-03-14T22:35:19	2006-03-14T22:24:00			
[s] Observation end time (MET)	258770484.184000	258771454.93386			
Observation end date	2006-03-15T00:40:19	2006-03-15T00:57:34			
Read mode	TIMED	TIMED			

## 2.3 Aspect



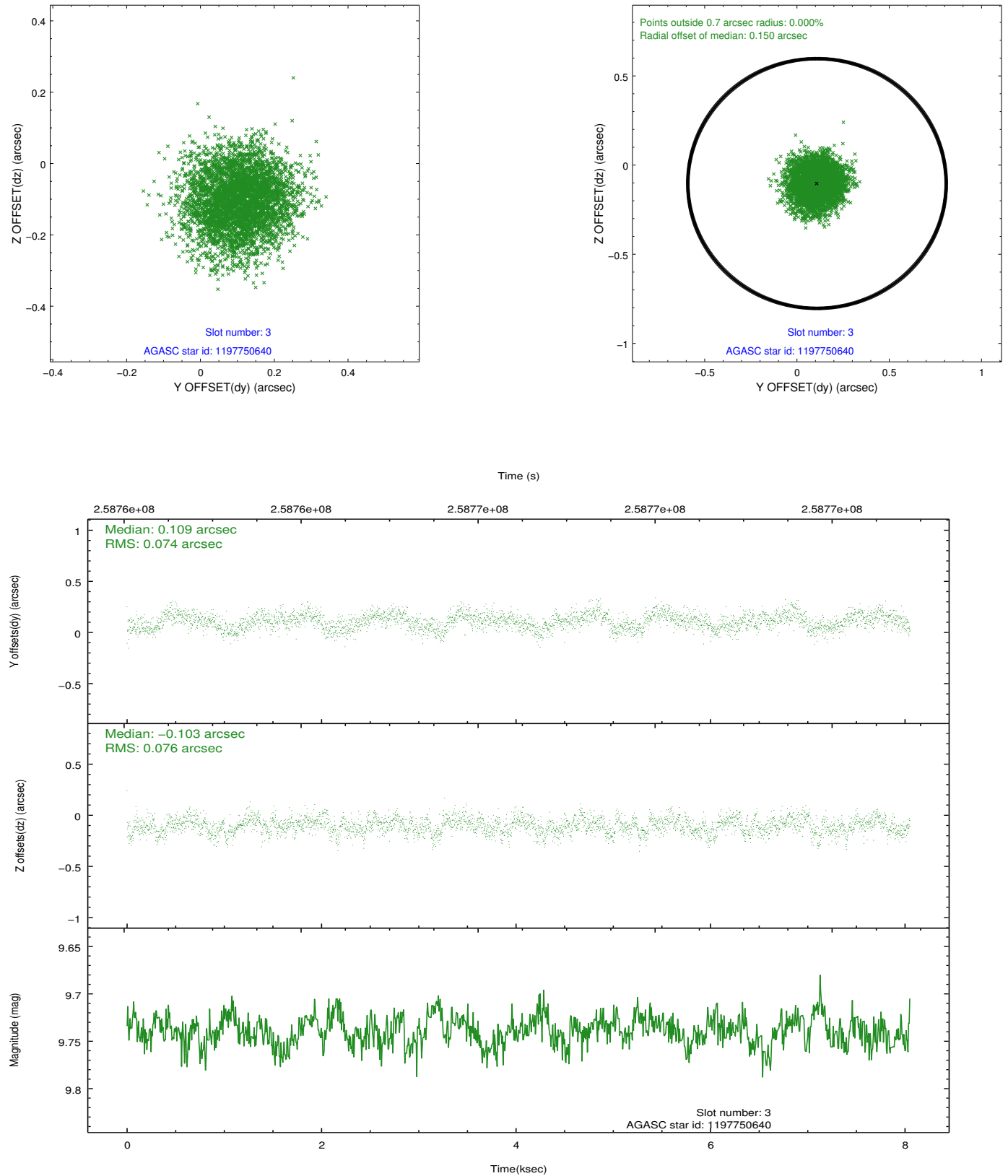


### Slot Statistics

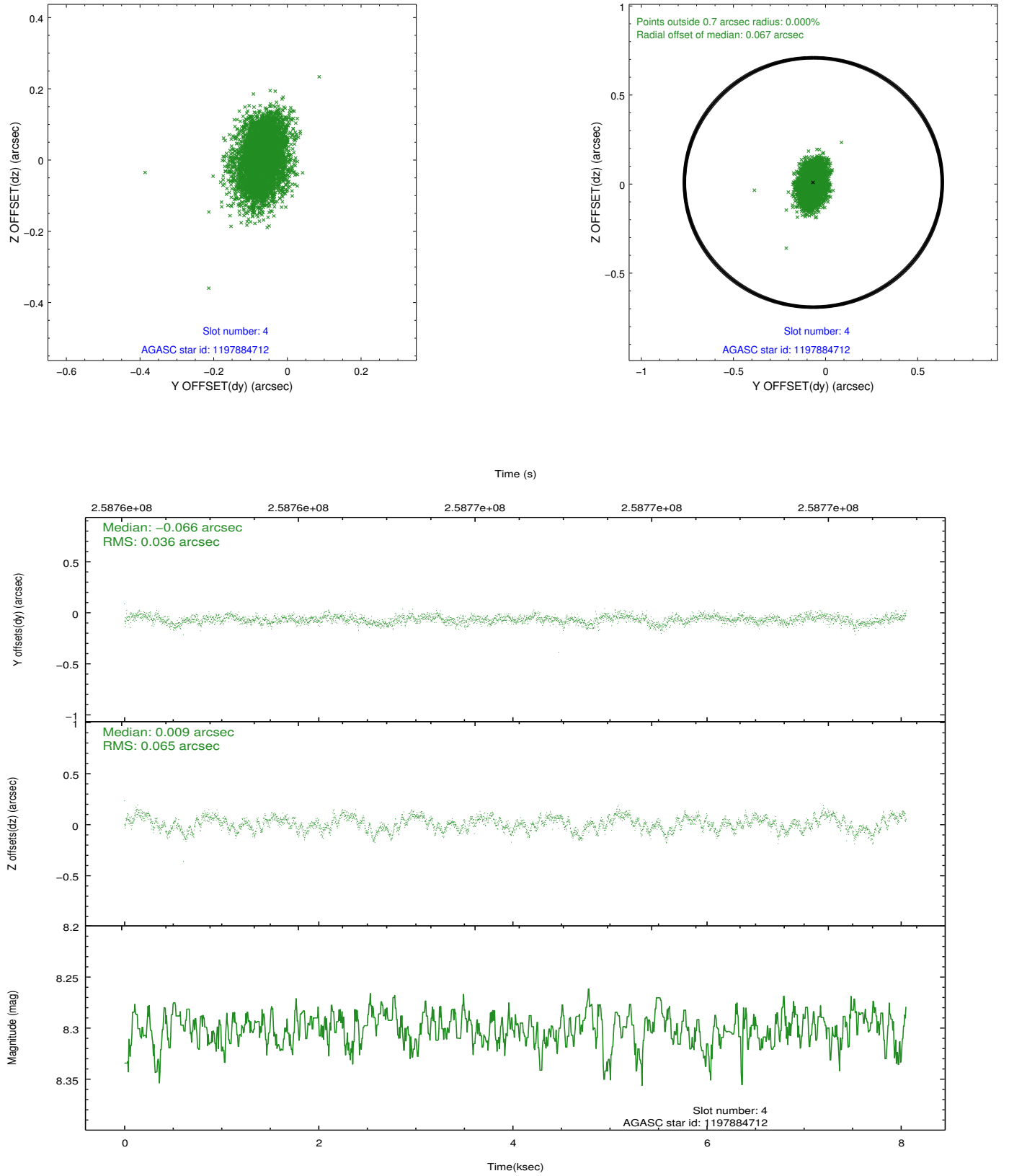
slot	status	id	mag	n_pts	med_dy	med_dz	dr1	dr2	ra	dec	mean_y	mean_z
0	FID	ACIS-I-1	7.24	1965	0.055	0.006	0.006	0.011	0.000000	0.000000	930.80	-836.22
1	FID	ACIS-I-5	7.23	1965	-0.199	0.069	0.006	0.010	0.000000	0.000000	-1817.14	1061.02
2	FID	ACIS-I-6	7.25	1965	0.053	-0.005	0.007	0.011	0.000000	0.000000	395.63	1706.21
3	GUIDE	1197750640	9.74	3924	0.109	-0.103	0.115	0.182	15.758835	-72.088048	374.56	166.05
4	GUIDE	1197884712	8.30	3927	-0.066	0.009	0.080	0.127	16.087398	-72.252690	267.75	852.72
5	GUIDE	1197885104	9.35	3927	0.117	0.055	0.093	0.147	17.845067	-72.189368	-1593.59	1417.33
6	GUIDE	1197885328	7.24	3929	0.069	0.133	0.055	0.089	16.283090	-71.733943	-658.95	-783.40
7	GUIDE	1198189696	7.35	3927	-0.226	-0.094	0.073	0.113	15.223750	-72.697522	1741.90	1977.85

## 2.4 Star Slots

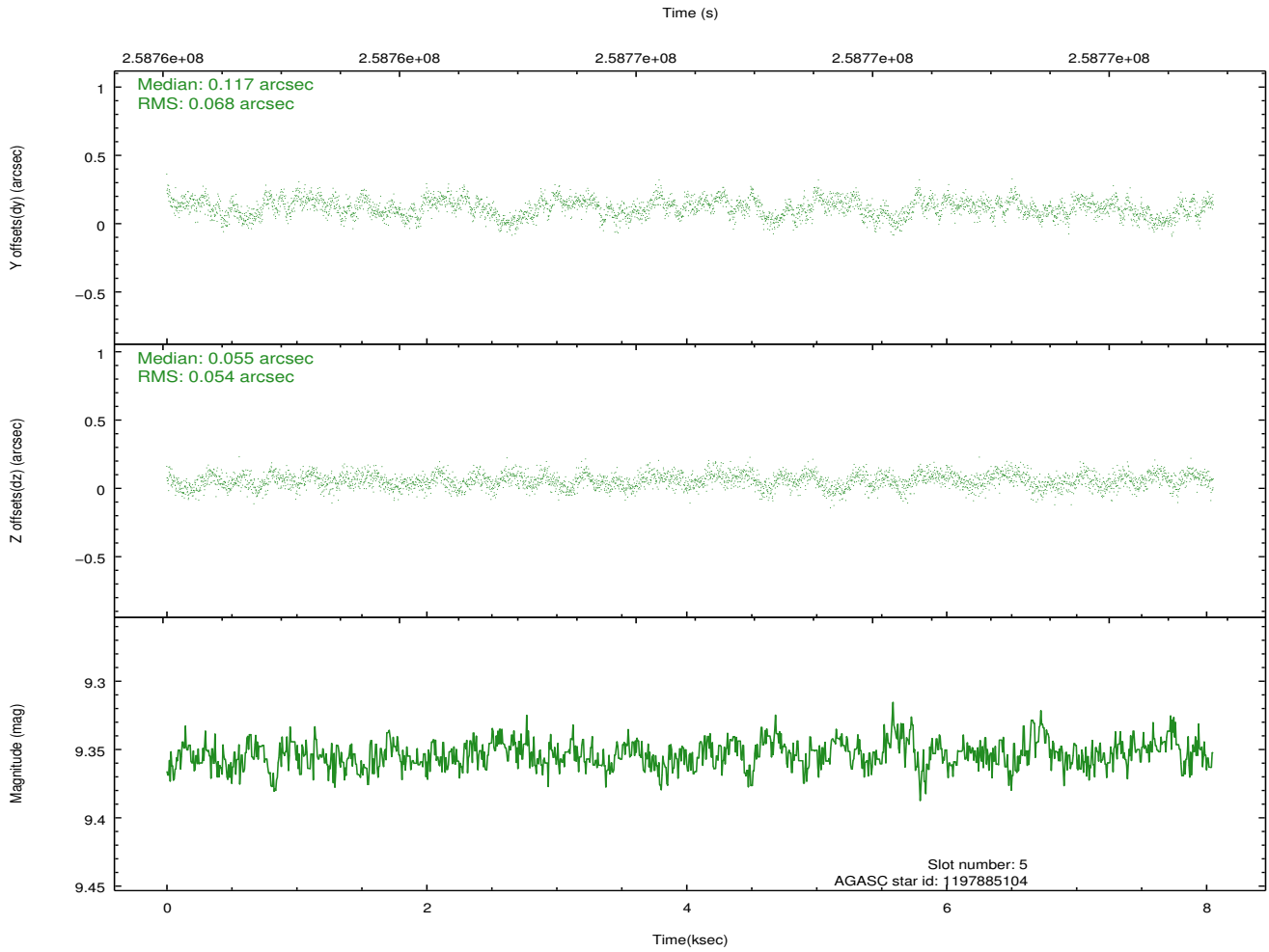
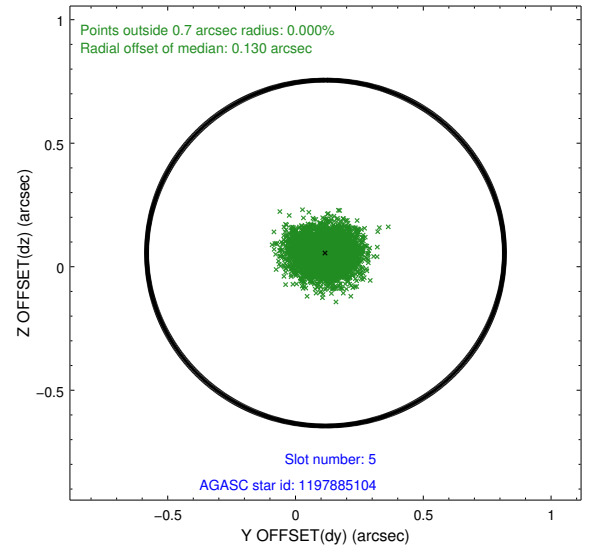
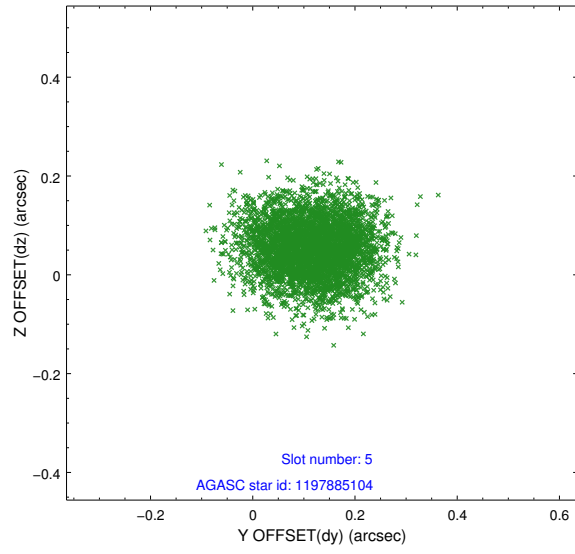
### 2.4.1 Slot 3



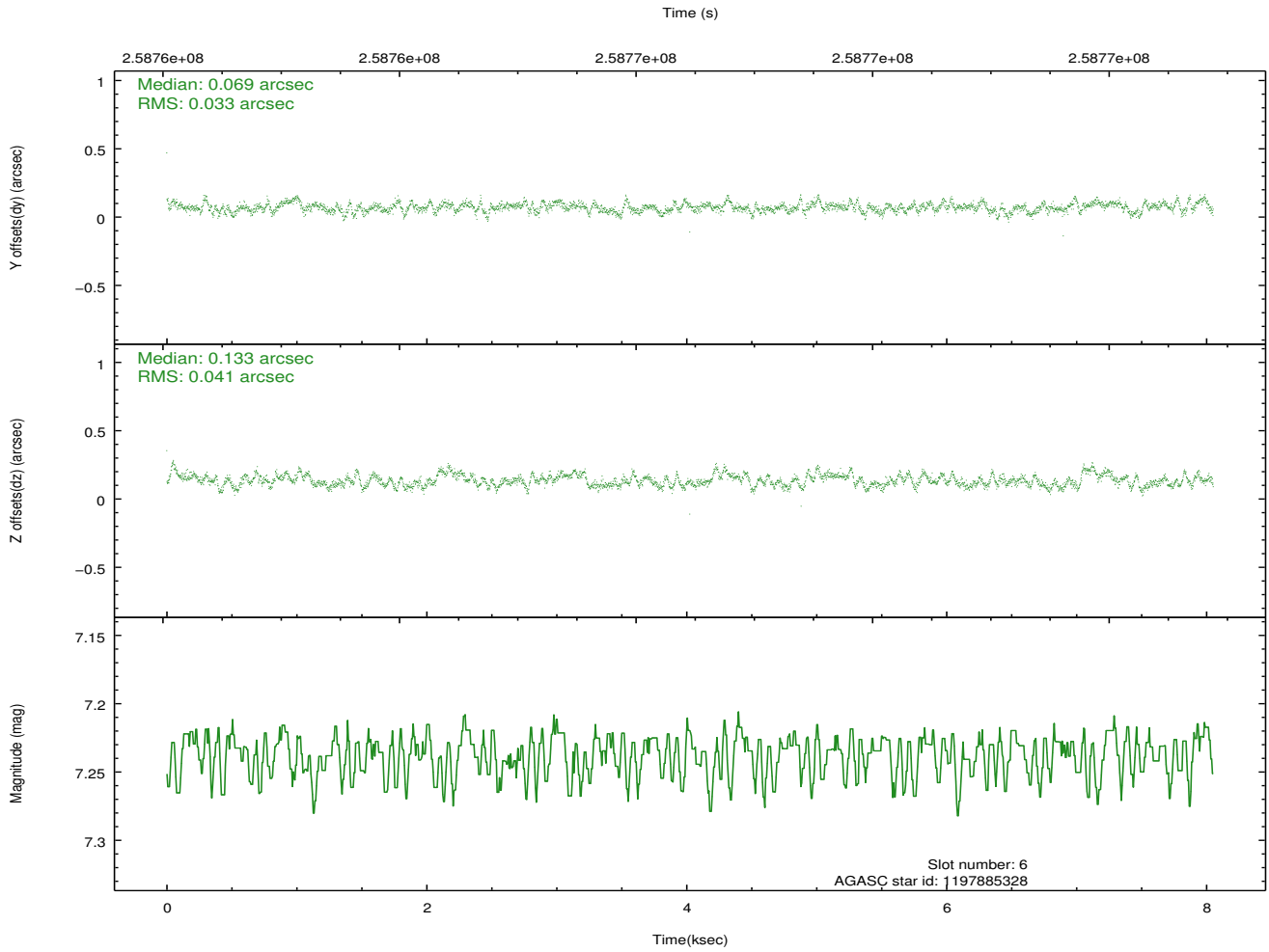
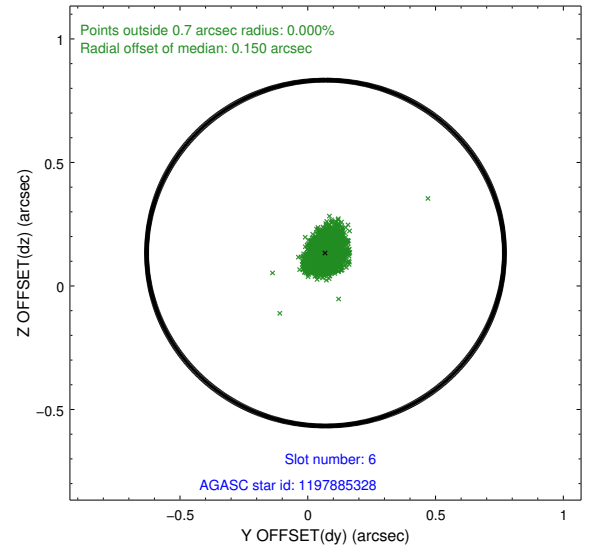
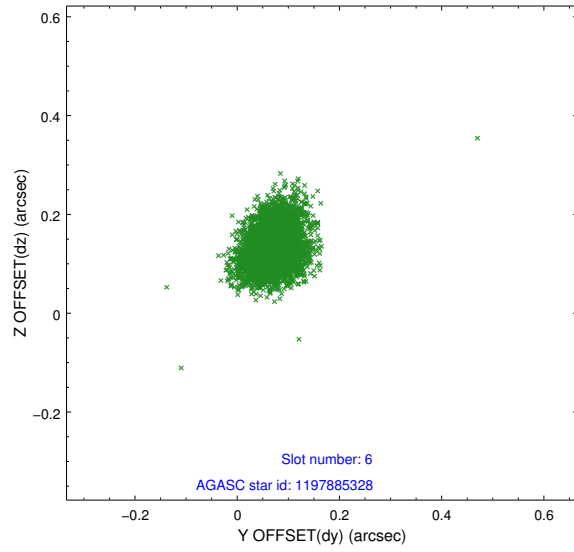
## 2.4.2 Slot 4



### 2.4.3 Slot 5

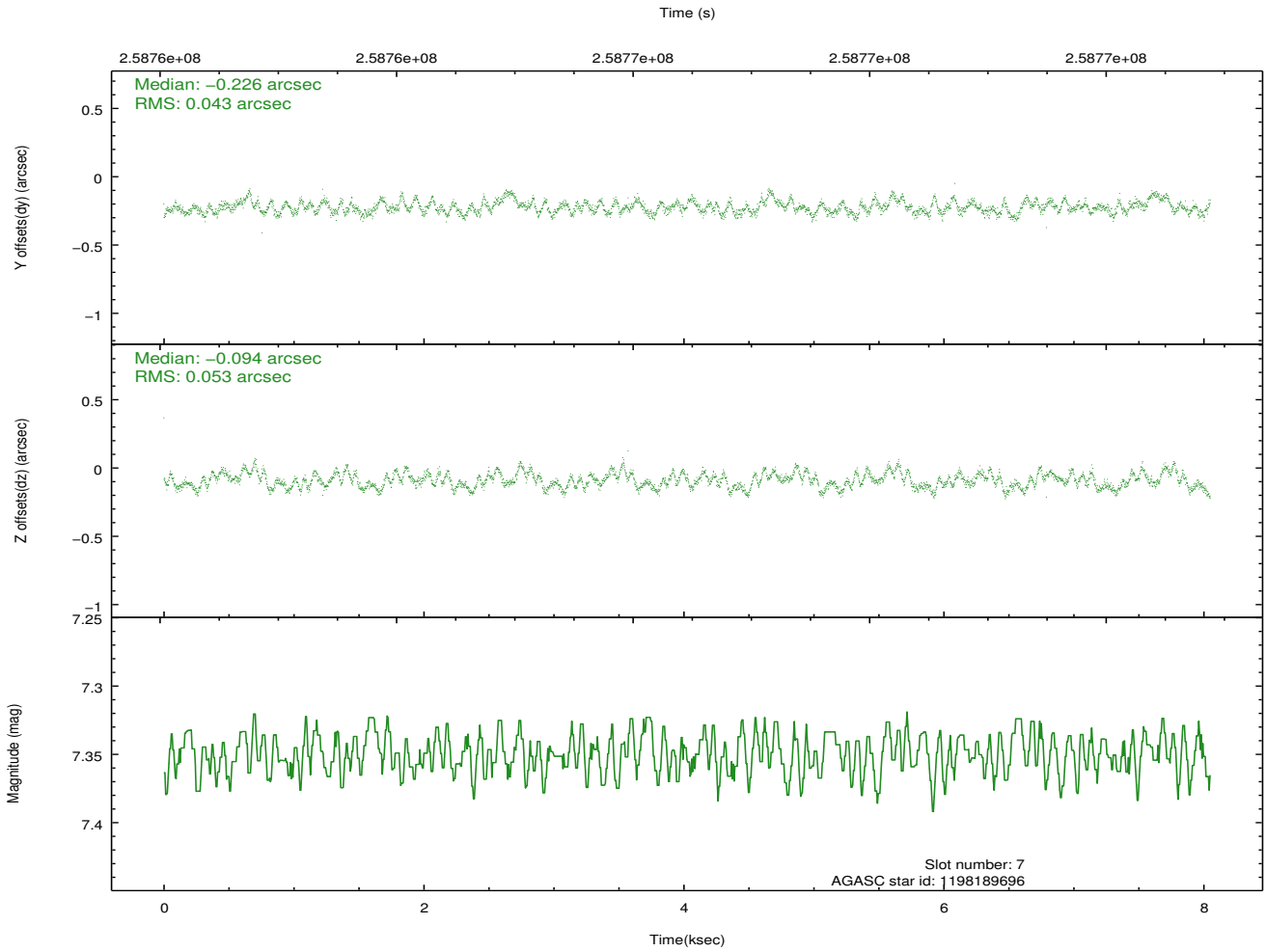
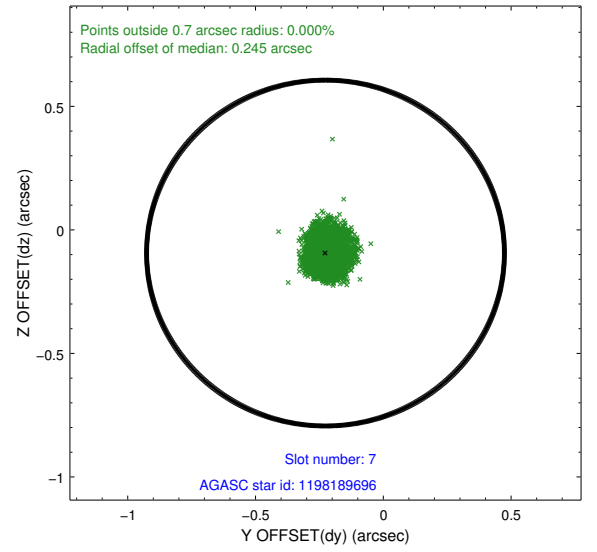
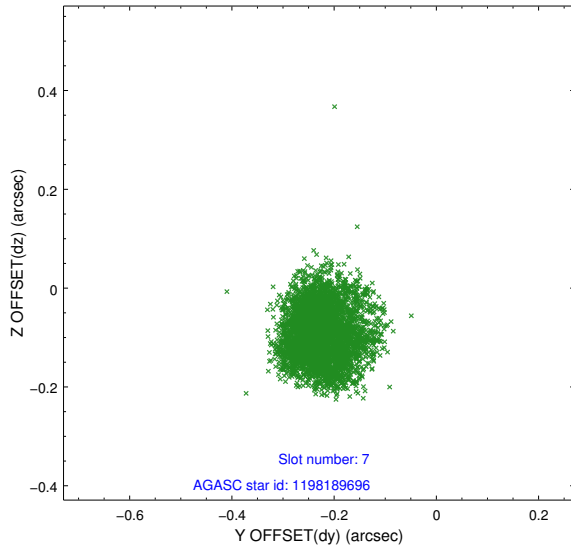


## 2.4.4 Slot 6



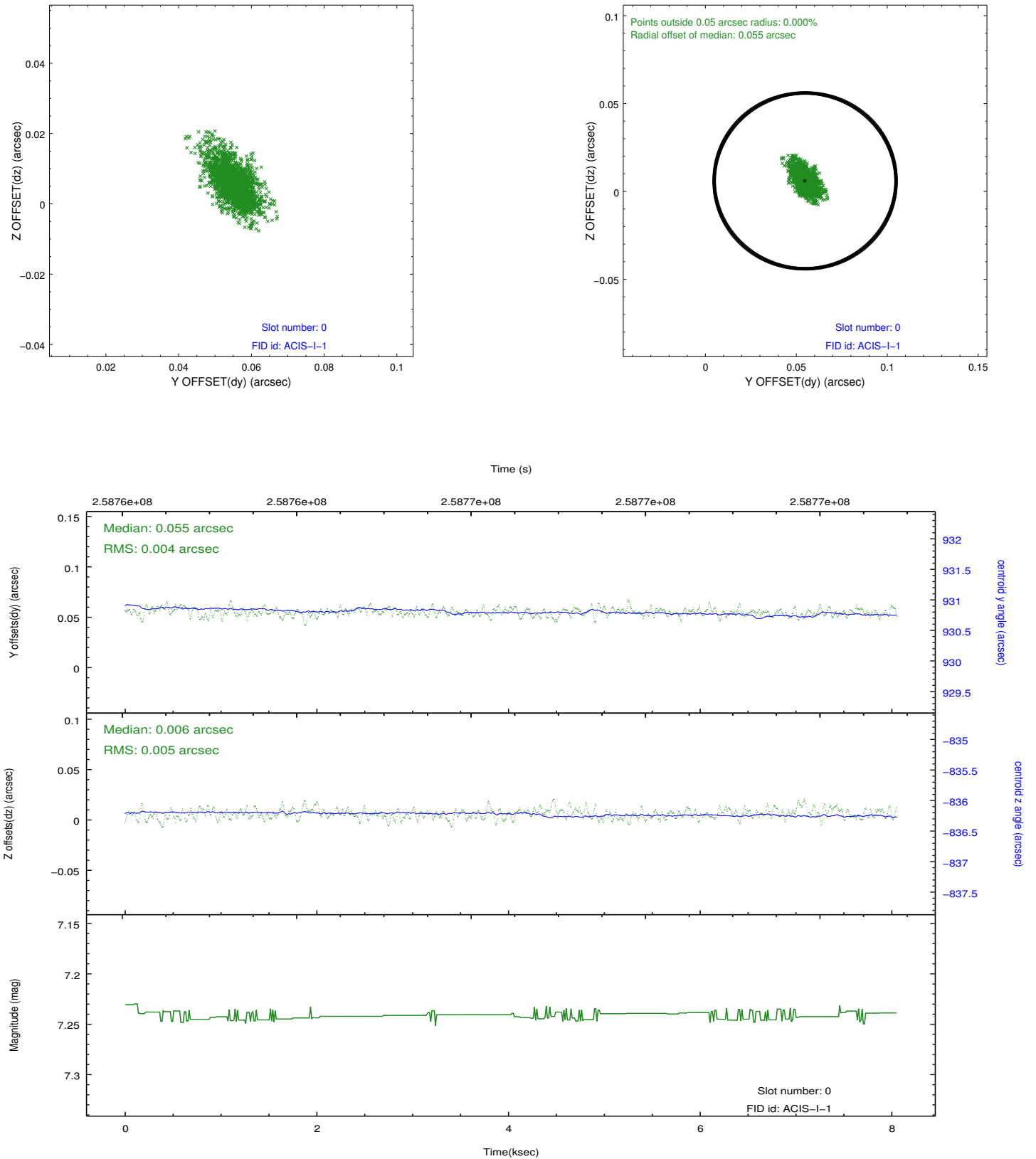


### 2.4.5 Slot 7

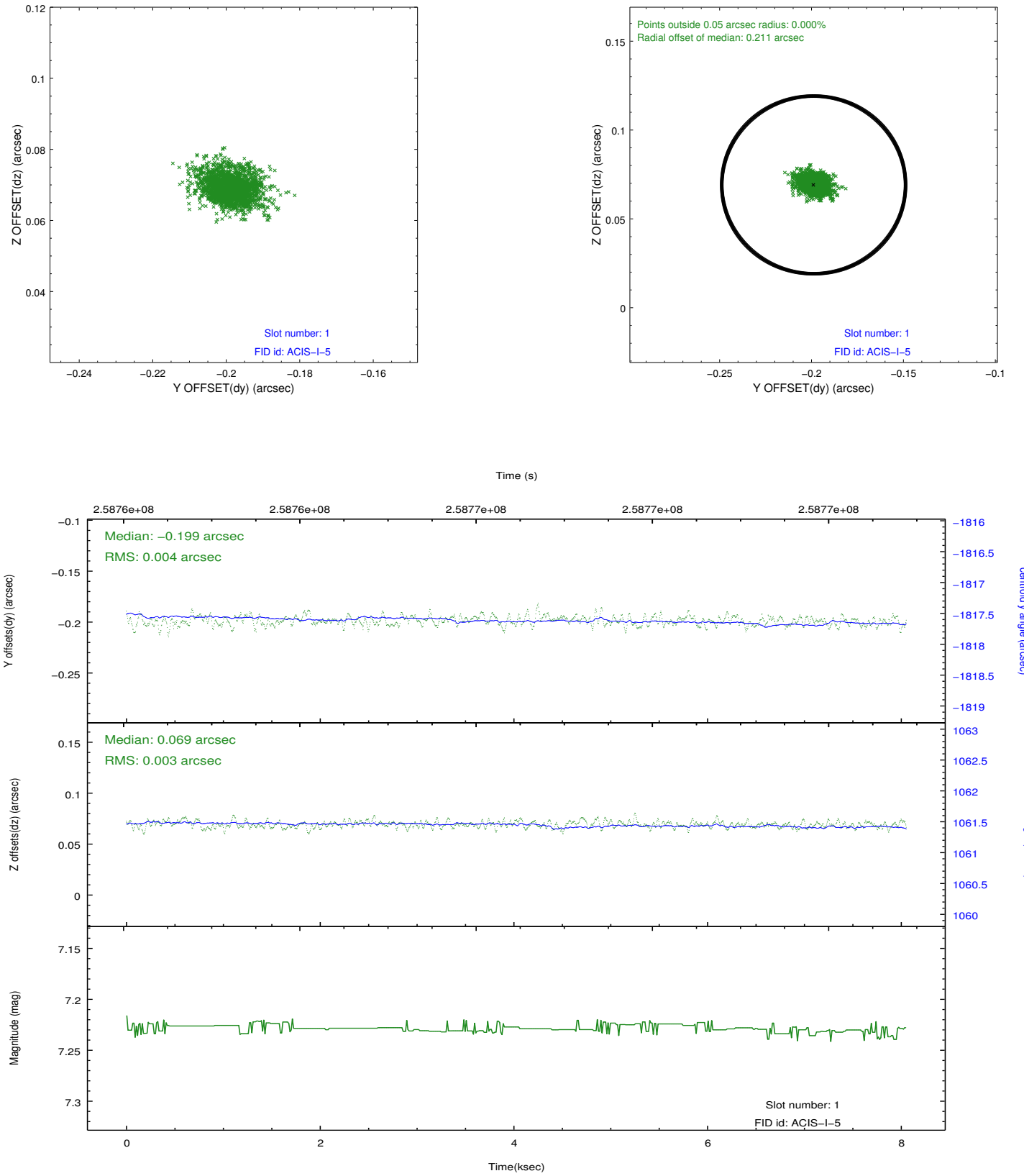


## 2.5 FID Slots

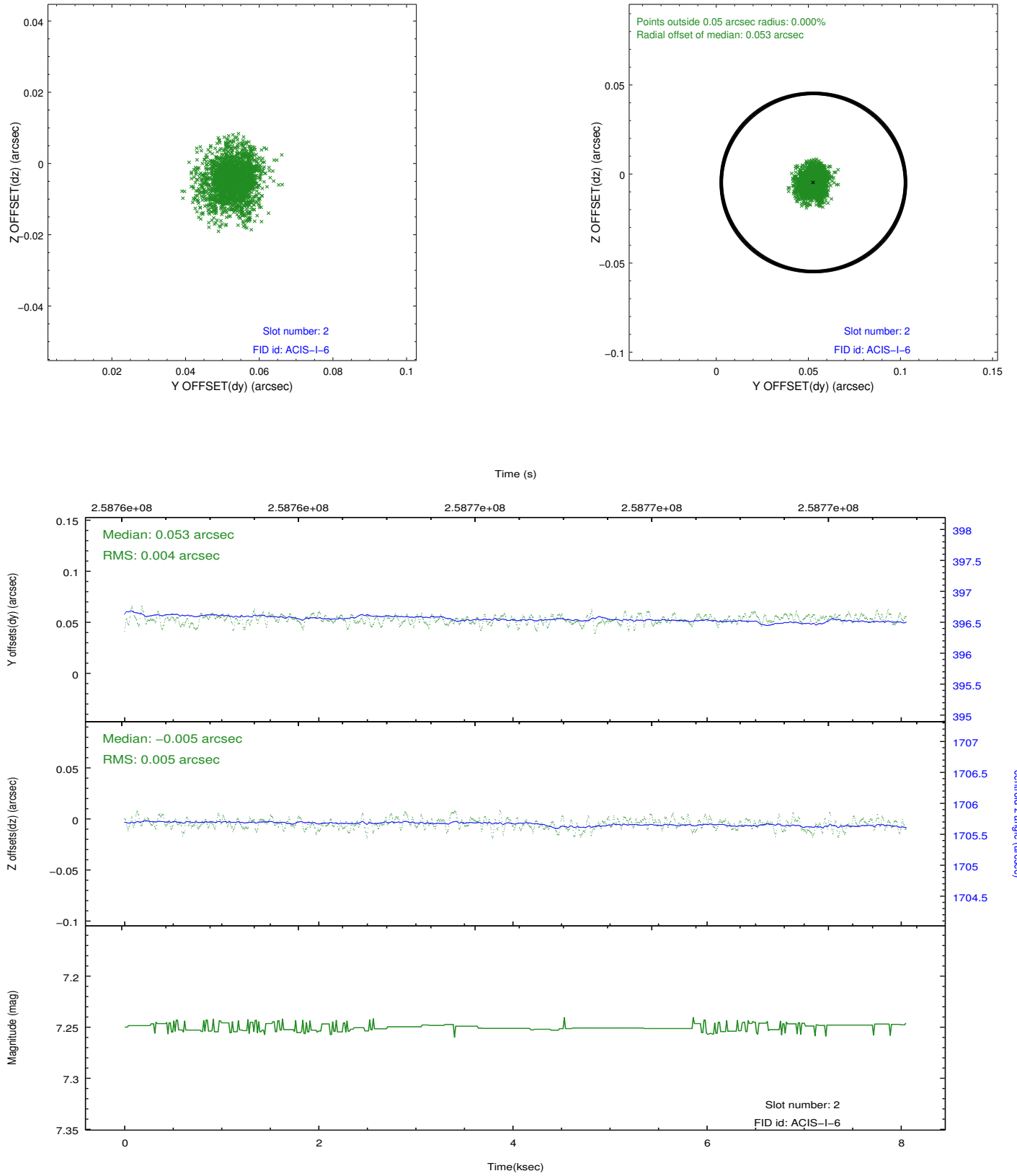
### 2.5.1 Slot 0



## 2.5.2 Slot 1



### 2.5.3 Slot 2



## A Summary

### A.1 Status

V&V Scientist	Jen Lauer
V&V Date (YYYY-MM-DD)	2012.03.28
V&V Edition	1
V&V Disposition and Status	OK
V&V Charge Time	7.52715907

### A.2 Comments

Window constraint satisfied.