

V&V Reference Report

L2 ASCDS Version : 8.1.1

Observation 62276 - L2 Version 6

Chandra X-Ray Center

L2 Processing Date : Oct 20 2010

Contents

1	Front	2
2	OBI	3
2.1	OBI	3
2.1.1	Images	3
2.1.2	Bias	3
2.1.3	Parameters	4
2.1.4	Events	4
2.2	Compared Parameters	5
2.3	Star Slots	6
2.4	FID Slots	6
A	Summary	7
A.1	Status	7
A.2	Comments	7

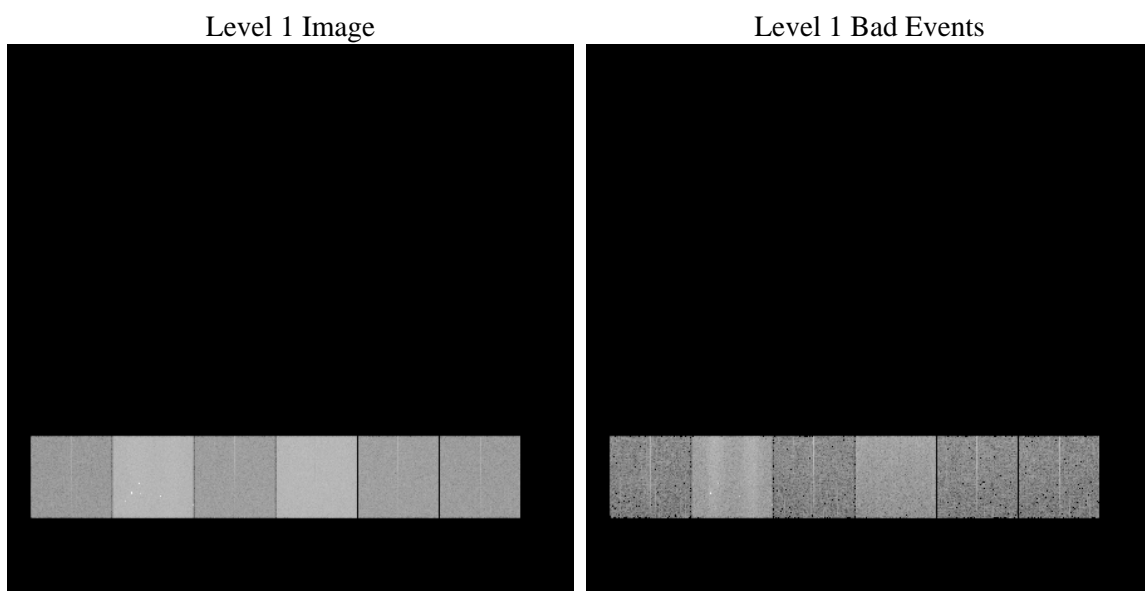
1 Front

seq_num	 	Sequence number
obs_id	62276	Observation id
title	ACIS-456789 diagnostics	Proposal title
observer	CHANDRA engineering request/realtime commanding	Principal investig
object	 	Source name
dtcycle	0	
cycle	P	events from which exps? Prim/Second/Both
ra_targ	0.0	Observer's specified target RA
dec_targ	0.0	Observer's specified target Dec
ra_nom	0.031231972282669	Nominal RA
dec_nom	59.955642888492	Nominal Dec
roll_nom	270.88101849068	Nominal Roll
revision	6	Processing version of data
ontime	2552.2867186293	Sum of GTIs [s]
livetime	2519.9681273955	Livetime [s]
ontime4	951.34164110571	Sum of GTIs [s]
ontime5	2724.099677667	Sum of GTIs [s]
ontime6	1064.7369215339	Sum of GTIs [s]
ontime7	2552.2867186293	Sum of GTIs [s]
ontime8	1090.7473215833	Sum of GTIs [s]
ontime9	1022.4803313091	Sum of GTIs [s]
l2events	805253	Number of level 2 events

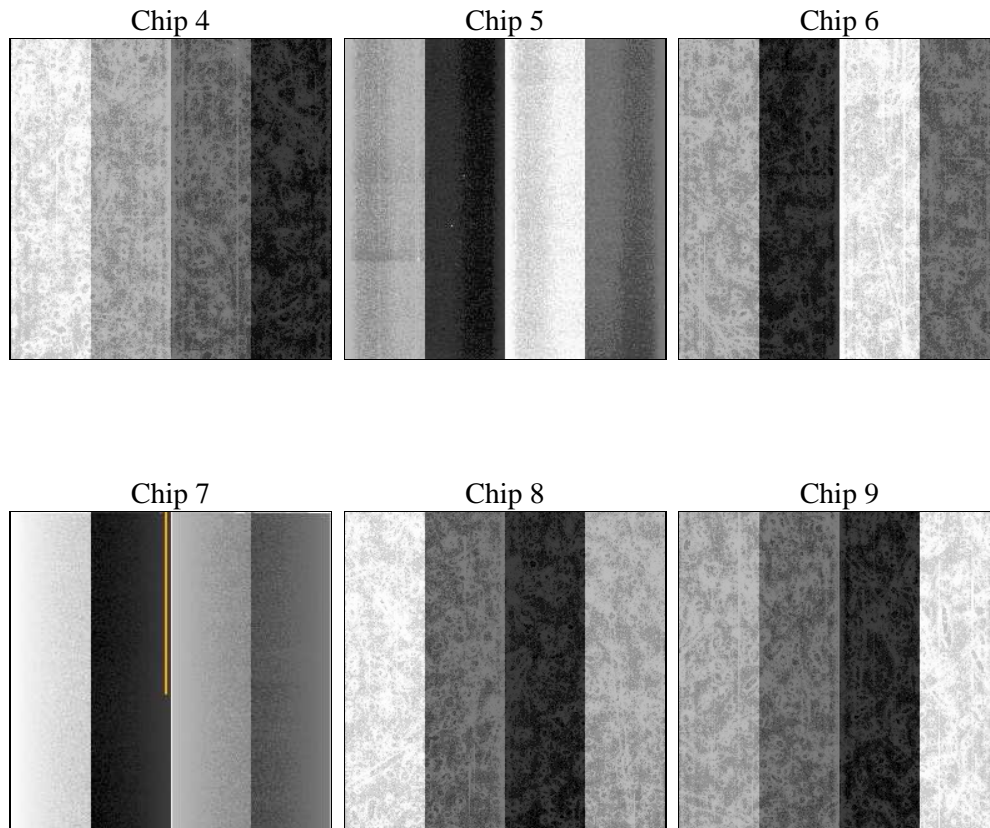
2 OBI

2.1 OBI

2.1.1 Images



2.1.2 Bias



2.1.4 Events

	ccd 4	ccd 5	ccd 6	ccd 7	ccd 8	ccd 9
level 1 events	101855	282103	120638	286774	124923	111811
rejected events	23720	64833	24949	48729	25636	23737
rejected %	23%	22%	20%	16%	20%	21%

2.2 Compared Parameters

Parameter	Planned	Actual	Parameter	Planned	Actual
Instrument	ACIS	ACIS	Obspar format version number	6	6
Detector	ACIS-456789	ACIS-456789	Obspar file type	PREDICTED	ACTUAL
Grating	NONE	NONE	Obspar update status	NONE	UPDATED
Data mode	FAINT	FAINT	On-chip summing requested	N	N
Observation mode	SECONDARY	SECONDARY	Subarray requested	NONE	NONE
Pointing RA	0	0.03123197228266889	Alternating exposures requested	N	N
Pointing Dec	0	59.95564288849197	Primary exposure time	3.2	3.2
Pointing Roll	0.0	270.8810184906794			
SIM focus pos (mm)	-0.684267	-0.6828225247311905			
SIM defocus (mm)	0	0.8505141146731063			
SIM translation stage pos (mm)	-190.132523	250.466033080201			
SIM translation stage offset (mm)	0	-0.01005468664627074			
Observation start time	61262857.213306	61262856.444859			
Observation start date	1999-12-11T01:27:37	1999-12-11T01:27:36			
Observation end time	61270157.26357	61269776.22011			
Observation end date	1999-12-11T03:29:17	1999-12-11T03:22:56			
Read mode	TIMED	TIMED			

2.3 Star Slots

2.4 FID Slots

A Summary

A.1 Status

V&V Scientist	Joy Nichols
V&V Date (YYYY-MM-DD)	2010.10.21
V&V Edition	1
V&V Disposition and Status	OK
V&V Charge Time	2.5522867186293

A.2 Comments

This observation is missing about 110 s at the end.

===

The focal plane temperature is approximately -110 C during this observation. This reprocessing of the data applies no CTI correction because none is available for this temperature at present.

The ACIS CTI correction has not been calibrated at this temperature, because it was early in the mission, and ACIS had not yet been lowered to the standard -119.7 C. Both front and back illuminated chips are affected. However a T_GAIN correction has been applied to the BI chips (ACIS-5 and ACIS-7) data included here.

The ACIS spectral response calibration is less accurate at these warmer temperatures than it is at -119.7 C. Users whose science objectives depend on the most accurate spectral response (ie: fitting line-rich spectra) may notice an effect. Users whose science objectives do not depend on the most accurate spectral response should not notice an effect.