

V&V Reference Report

L2 ASCDS Version : 7.6.10

Observation 61986 - L2 Version 001
Chandra X-Ray Center

L2 Processing Date : Jun 1 2007

Contents

1	Front	2
2	OBI	3
2.1	OBI	3
2.1.1	Images	3
2.1.2	Bias	3
2.1.3	Parameters	4
2.1.4	Events	4
2.2	Compared Parameters	5
2.3	Star Slots	6
2.4	FID Slots	6
A	Summary	7
A.1	Status	7
A.2	Comments	7

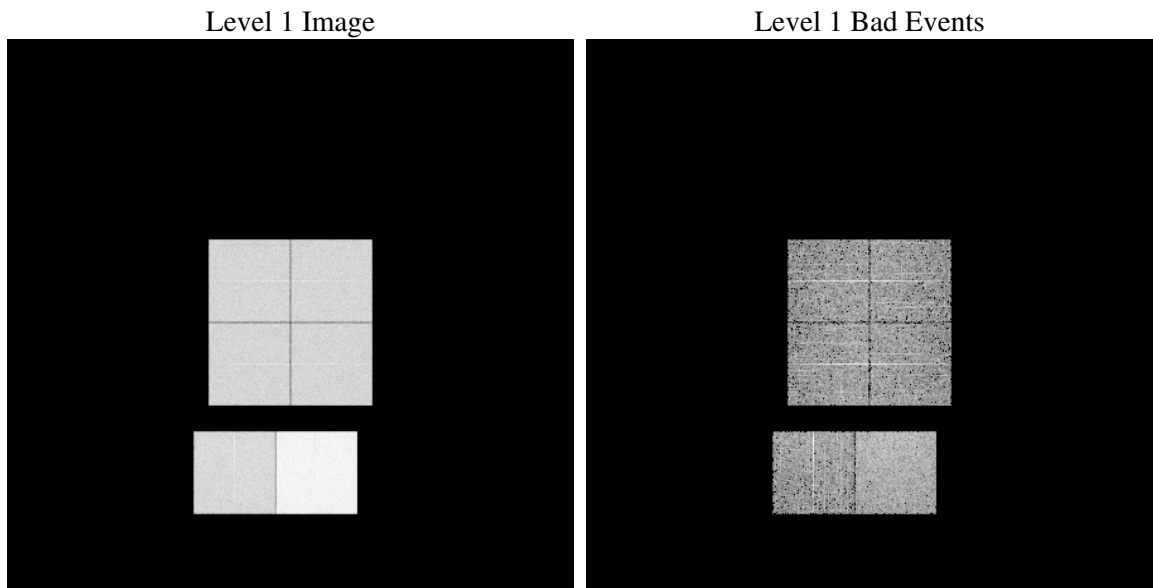
1 Front

seq_num	
obs_id	61986
title	ACIS-012367 diagnostics
observer	CHANDRA engineering request/realtime commanding
object	
dtcycle	0
cycle	P
ra_targ	0.0
dec_targ	0.0
ra_nom	171.13976209758
dec_nom	-47.917930977459
roll_nom	223.80535590004
revision	3
ontime	5392.3488097191
livetime	5324.0676422078
ontime0	2437.7263453454
ontime1	2415.0801751912
ontime2	2350.3006446958
ontime3	2349.048213318
ontime6	2544.8036254644
ontime7	5392.3488097191
l2events	1356809

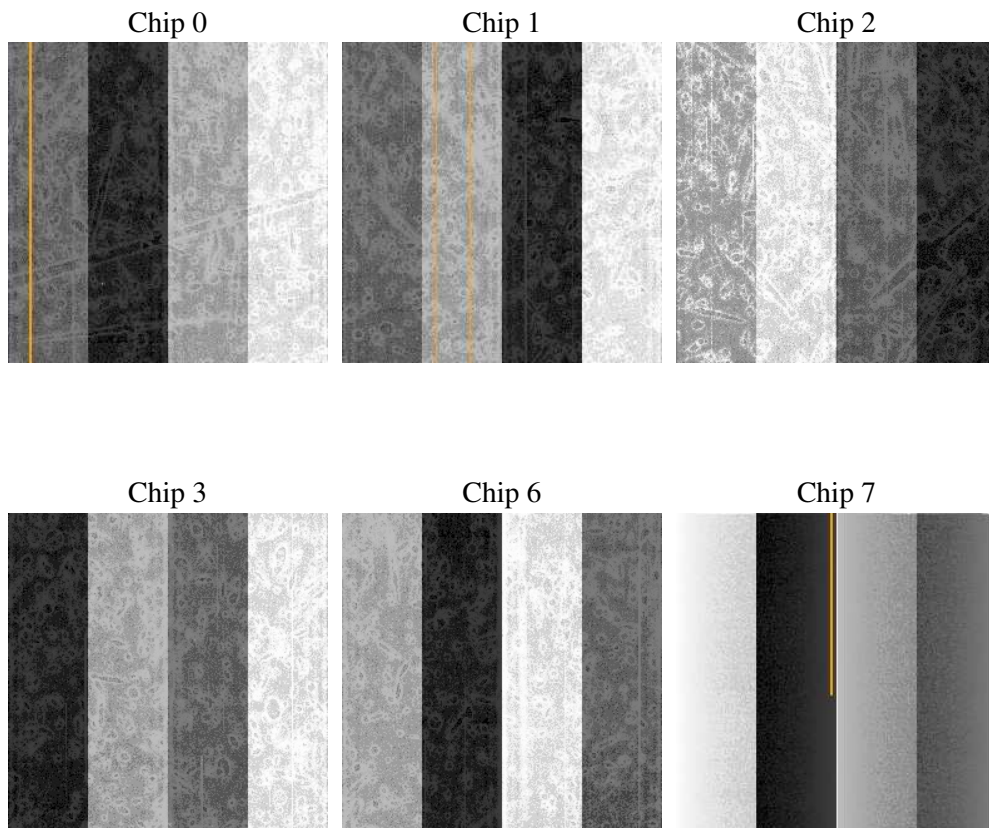
2 OBI

2.1 OBI

2.1.1 Images



2.1.2 Bias



2.1.3 Parameters

obi_num	0
ascdsver	7.6.10
caldbver	3.4.0
date	2007-06-01T07:41:37
revision	3

sched_exp_time	0.0
ontime	5392.3488097191
ontime0	2437.7263453454
ontime1	2415.0801751912
ontime2	2350.3006446958
ontime3	2349.048213318
ontime6	2544.8036254644
ontime7	5392.3488097191
l1events	1547258

2.1.4 Events

	ccd 0	ccd 1	ccd 2	ccd 3	ccd 6	ccd 7
level 1 events	213155	212468	210124	209100	234658	467753
rejected events	19894	20071	21382	20184	21333	29968
rejected %	9%	9%	10%	9%	9%	6%

	ccd 0	ccd 1	ccd 2	ccd 3	ccd 6	ccd 7
grade 0 events	108050	107826	106745	106931	117246	114688
	50%	50%	50%	51%	49%	24%
grade 1 events	553	565	535	577	554	300
	0%	0%	0%	0%	0%	0%
grade 2 events	34781	34065	33293	33331	37395	98137
	16%	16%	15%	15%	15%	20%
grade 3 events	12354	12555	12111	12138	13433	45576
	5%	5%	5%	5%	5%	9%
grade 4 events	12380	12091	12097	12091	13290	44804
	5%	5%	5%	5%	5%	9%
grade 5 events	1375	1370	1385	1430	1573	5841
	0%	0%	0%	0%	0%	1%
grade 6 events	28209	28166	27070	26488	34089	139569
	13%	13%	12%	12%	14%	29%
grade 7 events	15453	15830	16888	16114	17078	18838
	7%	7%	8%	7%	7%	4%

2.2 Compared Parameters

Parameter	Planned	Actual	Parameter	Planned	Actual
Instrument	ACIS	ACIS	Obspar format version number	6	6
Detector	ACIS-012367	ACIS-012367	Obspar file type	PREDICTED	ACTUAL
Grating	NONE	NONE	Obspar update status	NONE	UPDATED
Data mode	FAINT	FAINT	On-chip summing requested	N	N
Observation mode	SECONDARY	SECONDARY	Subarray requested	NONE	NONE
Pointing RA	0	171.1397620975801	Alternating exposures requested	N	N
Pointing Dec	0	-47.91793097745903	Primary exposure time	0.000000	3.2
Pointing Roll	0.0	223.8053559000369			
SIM focus pos (mm)	-0.782348	-0.6828225247311905			
SIM defocus (mm)	0	0.8505141146731063			
SIM translation stage pos (mm)	-233.592463	250.466033080201			
SIM translation stage offset (mm)	0	-0.01005468664627074			
Observation start time	80911464.286	80911463.51794299			
Observation start date	2000-07-25T11:24:24	2000-07-25T11:24:23			
Observation end time	80921974.63699999	80921973.868334			
Observation end date	2000-07-25T14:19:35	2000-07-25T14:19:33			
Read mode	TIMED	TIMED			

2.3 Star Slots

2.4 FID Slots

A Summary

A.1 Status

V&V Scientist	Beth Sundheim
V&V Date (YYYY-MM-DD)	2007.06.01
V&V Edition	1
V&V Disposition and Status	OK
V&V Charge Time	5.3923488

A.2 Comments