

V&V Reference Report

L2 ASCDS Version : 7.6.10

Observation 61866 - L2 Version 001
Chandra X-Ray Center

L2 Processing Date : Jun 14 2007

Contents

1	Front	2
2	OBI	3
2.1	OBI	3
2.1.1	Images	3
2.1.2	Bias	3
2.1.3	Parameters	4
2.1.4	Events	4
2.2	Compared Parameters	5
2.3	Star Slots	6
2.4	FID Slots	6
A	Summary	7
A.1	Status	7
A.2	Comments	7

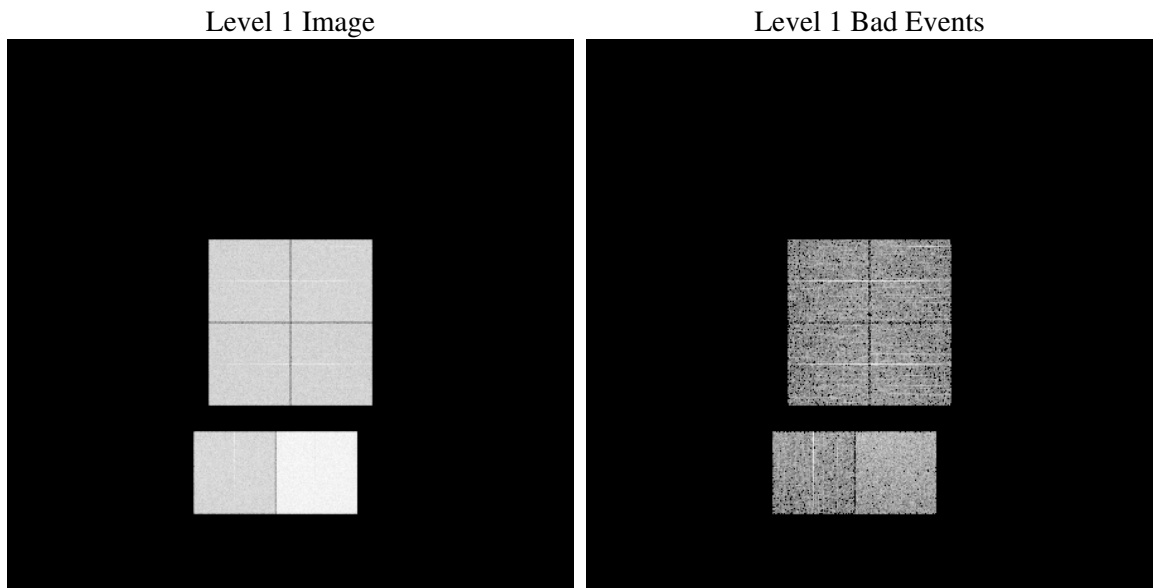
1 Front

seq_num	
obs_id	61866
title	ACIS-012367 diagnostics
observer	CHANDRA engineering request/realtime commanding
object	
dtcycle	0
cycle	P
ra_targ	0.0
dec_targ	0.0
ra_nom	356.39623865435
dec_nom	-59.492836169316
roll_nom	321.91021774596
revision	2
ontime	5466.2756451517
livetime	5397.0583715368
ontime0	2380.8867530674
ontime1	2423.060884282
ontime2	2277.2556729168
ontime3	2273.8501638621
ontime6	2484.7227938026
ontime7	5466.2756451517
l2events	1258322

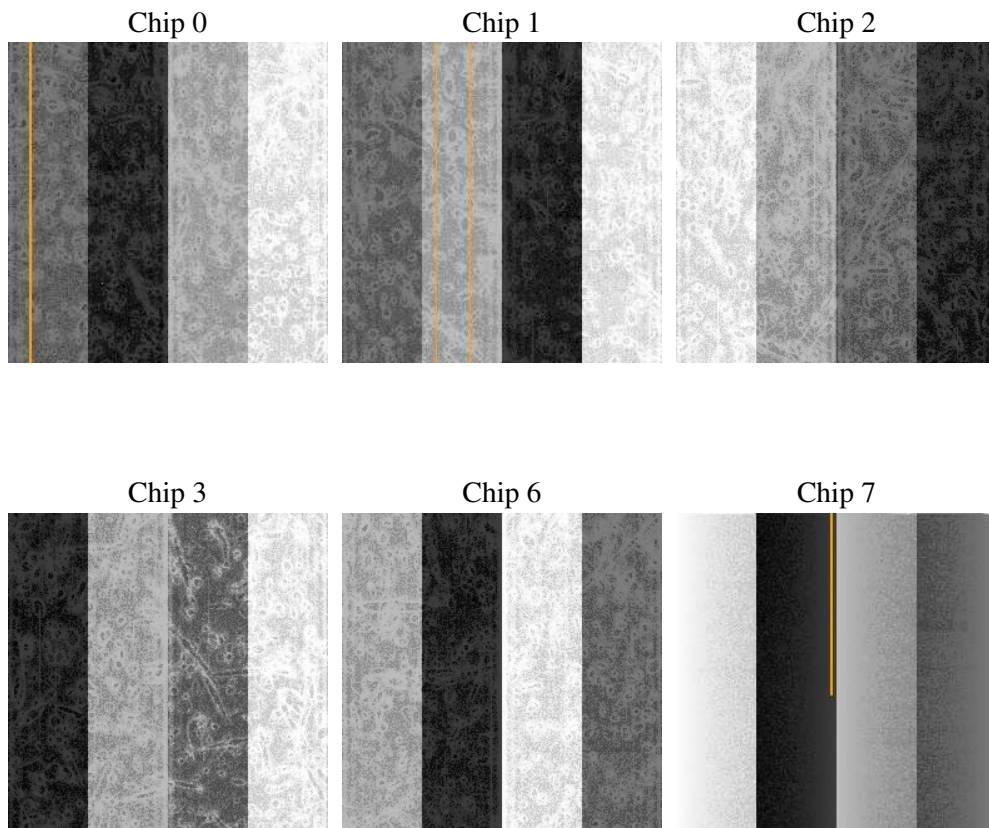
2 OBI

2.1 OBI

2.1.1 Images



2.1.2 Bias



2.1.3 Parameters

obi_num	0
ascdsver	7.6.10
caldbver	3.4.0
date	2007-06-14T16:39:55
revision	2

sched_exp_time	0.0
ontime	5466.2756451517
ontime0	2380.8867530674
ontime1	2423.060884282
ontime2	2277.2556729168
ontime3	2273.8501638621
ontime6	2484.7227938026
ontime7	5466.2756451517
l1events	1429665

2.1.4 Events

	ccd 0	ccd 1	ccd 2	ccd 3	ccd 6	ccd 7
level 1 events	194050	198071	189863	190244	212000	445437
rejected events	17789	18296	17908	18877	18556	27094
rejected %	9%	9%	9%	9%	8%	6%

	ccd 0	ccd 1	ccd 2	ccd 3	ccd 6	ccd 7
grade 0 events	97127	99001	96122	96055	105501	108421
	50%	49%	50%	50%	49%	24%
grade 1 events	508	516	477	505	506	279
	0%	0%	0%	0%	0%	0%
grade 2 events	31084	31661	30137	29974	33460	93146
	16%	15%	15%	15%	15%	20%
grade 3 events	11285	11446	10644	10842	12122	42773
	5%	5%	5%	5%	5%	9%
grade 4 events	11237	11408	10820	10951	11826	42775
	5%	5%	5%	5%	5%	9%
grade 5 events	1302	1368	1279	1364	1601	6183
	0%	0%	0%	0%	0%	1%
grade 6 events	25528	26259	24232	23545	30535	131228
	13%	13%	12%	12%	14%	29%
grade 7 events	15979	16412	16152	17008	16449	20632
	8%	8%	8%	8%	7%	4%

2.2 Compared Parameters

Parameter	Planned	Actual	Parameter	Planned	Actual
Instrument	ACIS	ACIS	Obspar format version number	6	6
Detector	ACIS-012367	ACIS-012367	Obspar file type	PREDICTED	ACTUAL
Grating	NONE	NONE	Obspar update status	NONE	UPDATED
Data mode	FAINT	FAINT	On-chip summing requested	N	N
Observation mode	SECONDARY	SECONDARY	Subarray requested	NONE	NONE
Pointing RA	0	356.3962386543519	Alternating exposures requested	N	N
Pointing Dec	0	-59.49283616931592	Primary exposure time	0.000000	3.2
Pointing Roll	0.0	321.9102177459573			
SIM focus pos (mm)	-0.782348	-0.6828225247311905			
SIM defocus (mm)	0	0.8505141146731063			
SIM translation stage pos (mm)	-233.592463	250.466033080201			
SIM translation stage offset (mm)	0	-0.01005468664627074			
Observation start time	89316360.052	89316359.283677			
Observation start date	2000-10-30T18:06:00	2000-10-30T18:05:59			
Observation end time	89364430.50399999	89364429.73549099			
Observation end date	2000-10-31T07:27:11	2000-10-31T07:27:09			
Read mode	TIMED	TIMED			

2.3 Star Slots

2.4 FID Slots

A Summary

A.1 Status

V&V Scientist	Jen Lauer
V&V Date (YYYY-MM-DD)	2007.06.14
V&V Edition	1
V&V Disposition and Status	OK
V&V Charge Time	5.46627564

A.2 Comments