

V&V Reference Report

L2 ASCDS Version : 7.6.9

Observation 61756 - L2 Version 001
Chandra X-Ray Center

L2 Processing Date : Nov 4 2006

Contents

1	Front	2
2	OBI	3
2.1	OBI	3
2.1.1	Images	3
2.1.2	Bias	3
2.1.3	Parameters	4
2.1.4	Events	4
2.2	Compared Parameters	5
2.3	Aspect	6
2.4	Star Slots	8
2.5	FID Slots	8
A	Summary	9
A.1	Status	9
A.2	Comments	9

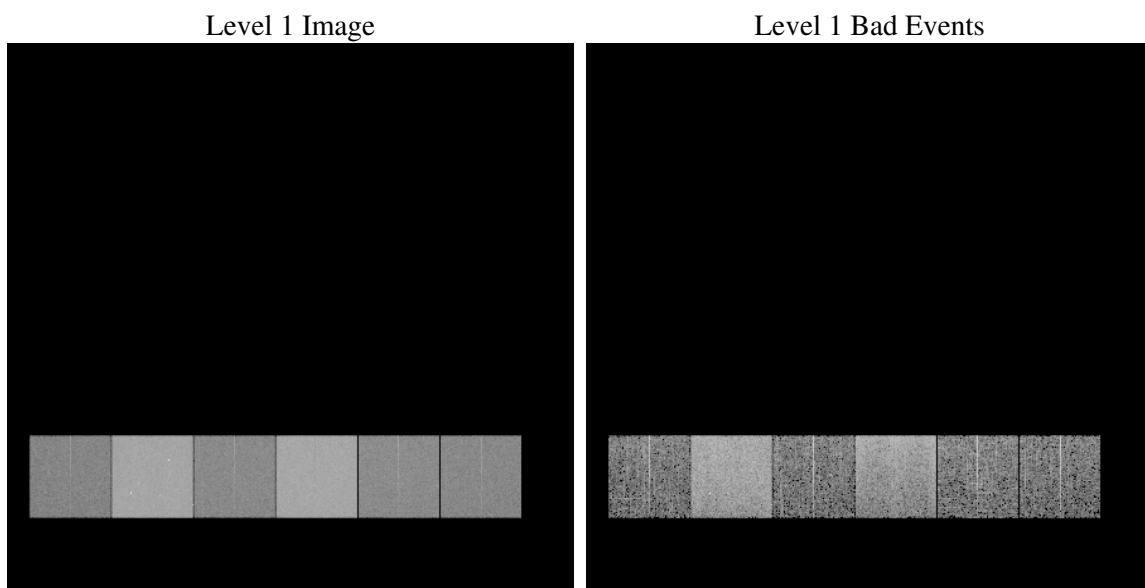
1 Front

seq_num	
obs_id	61756
title	ACIS-456789 diagnostics
observer	CHANDRA engineering request/realtime commanding
object	
dtcycle	0
cycle	P
ra_targ	0.0
dec_targ	0.0
ra_nom	353.93320653593
dec_nom	32.393827453048
roll_nom	314.95361635139
revision	3
ontime	5361.1494949758
livetime	5293.2633919738
ontime4	2142.953931585
ontime5	5751.4816039652
ontime6	2306.2996618897
ontime7	5361.1494949758
ontime8	2402.2779614776
ontime9	2285.395431459
l2events	1309966

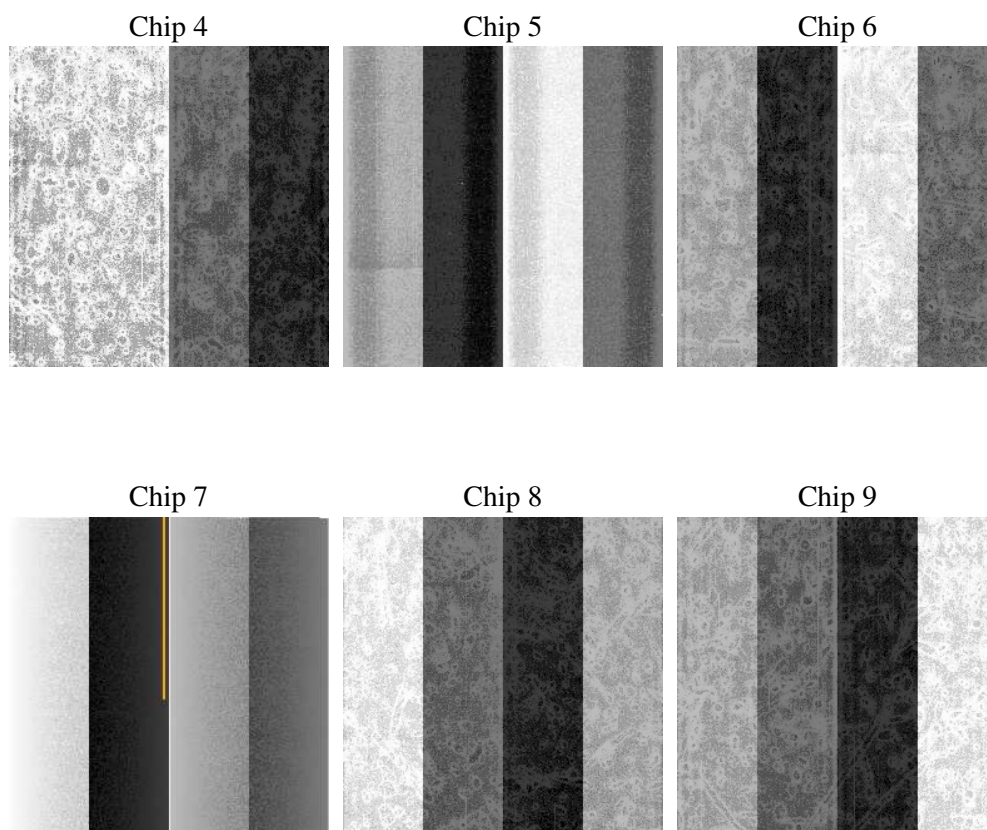
2 OBI

2.1 OBI

2.1.1 Images



2.1.2 Bias



2.1.3 Parameters

obi_num	0
ascdsver	7.6.9
caldsver	3.2.3
date	2006-11-04T14:11:12
revision	3

sched_exp_time	0.0
ontime	5402.7773244679
ontime4	2161.7716303021
ontime5	5798.1745828688
ontime6	2327.0646897852
ontime7	5402.7773244679
ontime8	2421.0546201915
ontime9	2301.136250183
l1events	1549605

2.1.4 Events

	ccd 4	ccd 5	ccd 6	ccd 7	ccd 8	ccd 9
level 1 events	164879	402207	188873	414495	199105	180046
rejected events	20354	54175	20785	42293	22808	19526
rejected %	12%	13%	11%	10%	11%	10%

	ccd 4	ccd 5	ccd 6	ccd 7	ccd 8	ccd 9
grade 0 events	82679	44052	92641	71498	98113	88833
	50%	10%	49%	17%	49%	49%
grade 1 events	472	145	474	190	480	491
	0%	0%	0%	0%	0%	0%
grade 2 events	25590	169083	29297	112077	31486	28677
	15%	42%	15%	27%	15%	15%
grade 3 events	9014	11998	10408	28945	11132	9934
	5%	2%	5%	6%	5%	5%
grade 4 events	8937	12049	10404	28379	11049	10032
	5%	2%	5%	6%	5%	5%
grade 5 events	1270	6362	1433	5849	1635	1464
	0%	1%	0%	1%	0%	0%
grade 6 events	19619	113718	27119	134172	25886	24157
	11%	28%	14%	32%	13%	13%
grade 7 events	17298	44800	17097	33385	19324	16458
	10%	11%	9%	8%	9%	9%

2.2 Compared Parameters

Parameter	Planned	Actual	Parameter	Planned	Actual
Instrument	ACIS	ACIS	Obspar format version number	6	6
Detector	ACIS-456789	ACIS-456789	Obspar file type	PREDICTED	ACTUAL
Grating	NONE	NONE	Obspar update status	NONE	UPDATED
Data mode	FAINT	FAINT	On-chip summing requested	N	N
Observation mode	SECONDARY	SECONDARY	Subarray requested	NONE	NONE
Pointing RA	0	353.9332065359339	Alternating exposures requested	N	N
Pointing Dec	0	32.39382745304757	Primary exposure time	3.2	3.2
Pointing Roll	0.0	314.9536163513851			
SIM focus pos (mm)	-0.684267	-0.6828225247311905			
SIM defocus (mm)	0	0.8505141146731063			
SIM translation stage pos (mm)	-190.132523	250.466033080201			
SIM translation stage offset (mm)	0	-0.01005468664627074			
Observation start time	97119053.95033699	97119053.18188199			
Observation start date	2001-01-29T01:30:54	2001-01-29T01:30:53			
Observation end time	97140845.451176	97140844.682721			
Observation end date	2001-01-29T07:34:05	2001-01-29T07:34:04			
Read mode	TIMED	TIMED			

2.3 Aspect

2.4 Star Slots

2.5 FID Slots

A Summary

A.1 Status

V&V Scientist	Jen Lauer
V&V Date (YYYY-MM-DD)	2006.11.06
V&V Edition	1
V&V Disposition and Status	OK
V&V Charge Time	5.36114949

A.2 Comments