

# V&V Reference Report

## L2 ASCDS Version : 8.4.5

Observation 61706 - L2 Version 3  
Chandra X-Ray Center

L2 Processing Date : Sep 14 2012

## Contents

<b>1</b>	<b>Front</b>	<b>2</b>
<b>2</b>	<b>OBI</b>	<b>3</b>
2.1	OBI . . . . .	3
2.1.1	Images . . . . .	3
2.1.2	Bias . . . . .	3
2.1.3	Parameters . . . . .	4
2.1.4	Events . . . . .	4
2.2	Compared Parameters . . . . .	5
2.3	Star Slots . . . . .	6
2.4	FID Slots . . . . .	6
<b>A</b>	<b>Summary</b>	<b>7</b>
A.1	Status . . . . .	7
A.2	Comments . . . . .	7

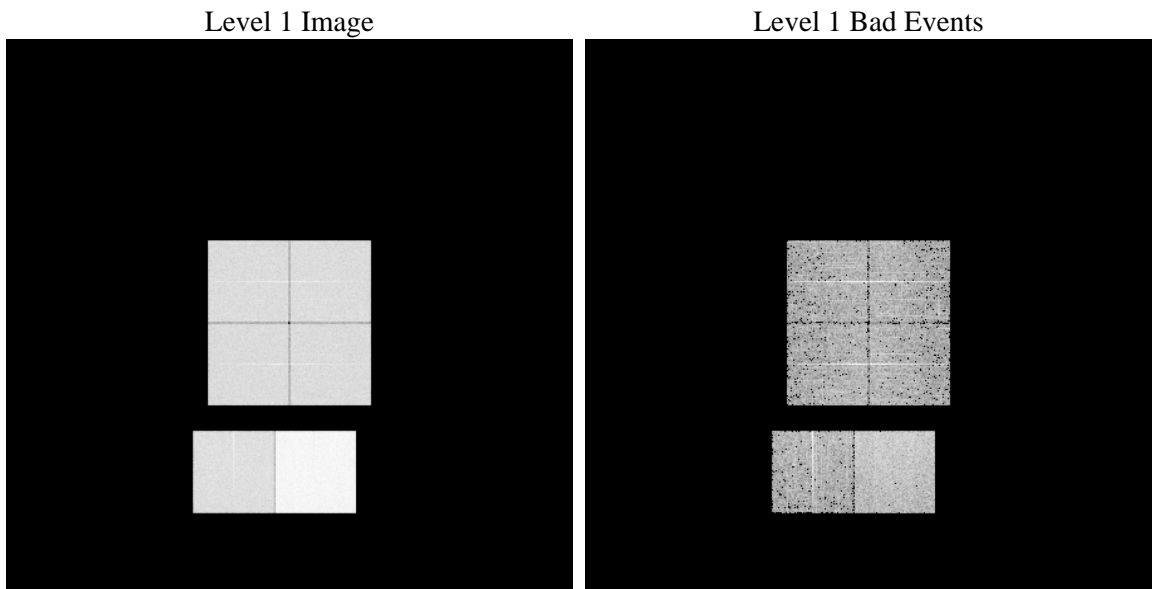
# 1 Front

seq_num	&#160	Sequence number
obs_id	61706	Observation id
title	ACIS-012367 diagnostics	Proposal title
observer	CHANDRA engineering request/realtime commanding	Principal investig
object	&#160	Source name
dtcycle	0	&#160
cycle	P	events from which exps? Prim/Second/Both
ra_targ	0.0	Observer's specified target RA [deg]
dec_targ	0.0	Observer's specified target Dec [deg]
ra_nom	179.96962818181	Nominal RA [deg]
dec_nom	21.99459978145	Nominal Dec [deg]
roll_nom	158.2342168926	Nominal Roll [deg]
revision	3	Processing version of data
ontime	6701.2000296861	Sum of GTIs [s]
livetime	6616.345399932	Livetime [s]
ontime0	2682.6683250517	Sum of GTIs [s]
ontime1	2721.6016555279	Sum of GTIs [s]
ontime2	2585.5193149447	Sum of GTIs [s]
ontime3	2604.8014049232	Sum of GTIs [s]
ontime6	2834.703122437	Sum of GTIs [s]
ontime7	6701.2000296861	Sum of GTIs [s]
l2events	1331344	Number of level 2 events

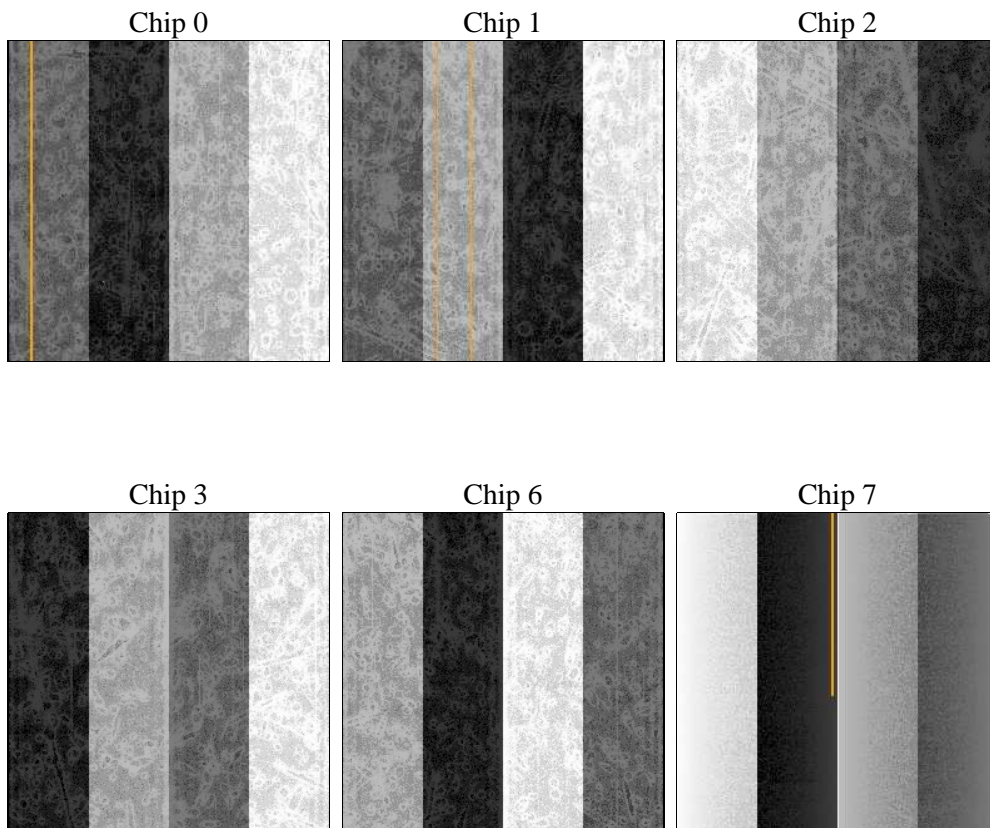
## 2 OBI

### 2.1 OBI

#### 2.1.1 Images



#### 2.1.2 Bias



### 2.1.3 Parameters

obi_num	0	Obi number	sched_exp_time	0.0	[s] Scheduled observation exposure time
ascdsver	8.4.5	Processing system revision	ontime	6701.2000296861	Sum of GTIs [s]
caldsver	4.5.1.1	&#160	ontime0	2682.6683250517	Sum of GTIs [s]
date	2012-09-14T06:48:17	Date and time of file creation	ontime1	2721.6016555279	Sum of GTIs [s]
revision	3	Processing version of data	ontime2	2585.5193149447	Sum of GTIs [s]
			ontime3	2604.8014049232	Sum of GTIs [s]
			ontime6	2834.703122437	Sum of GTIs [s]
			ontime7	6701.2000296861	Sum of GTIs [s]
			l1events	1533066	Number of level 1 events

### 2.1.4 Events

	ccd 0	ccd 1	ccd 2	ccd 3	ccd 6	ccd 7		ccd 0	ccd 1	ccd 2	ccd 3	ccd 6	ccd 7
level 1 events	202583	204568	197717	199394	224178	504626	grade 0 events	100040	100797	97717	99378	109389	118960
rejected events	21468	21342	21596	21512	22705	36787		49%	49%	49%	49%	48%	23%
rejected %	10%	10%	10%	10%	10%	7%	grade 1 events	581	529	539	584	575	341
								0%	0%	0%	0%	0%	0%
							grade 2 events	31735	32362	30816	31059	34984	102974
								15%	15%	15%	15%	15%	20%
							grade 3 events	11418	11525	11230	11219	12548	48077
								5%	5%	5%	5%	5%	9%
							grade 4 events	11449	11487	11149	11394	12415	47778
								5%	5%	5%	5%	5%	9%
							grade 5 events	1551	1602	1505	1565	1752	7803
								0%	0%	0%	0%	0%	1%
							grade 6 events	26473	27055	25209	24832	32137	150050
								13%	13%	12%	12%	14%	29%
							grade 7 events	19336	19211	19552	19363	20378	28643
								9%	9%	9%	9%	9%	5%

## 2.2 Compared Parameters

Parameter	Planned	Actual	Parameter	Planned	Actual
Instrument	ACIS	ACIS	Obspar format version number	7	7
Detector	ACIS-012367	ACIS-012367	Obspar file type	PREDICTED	ACTUAL
Grating	NONE	NONE	Obspar update status	NONE	UPDATED
Data mode	FAINT	FAINT	On-chip summing requested	N	N
Observation mode	SECONDARY	SECONDARY	Subarray requested	NONE	NONE
[deg] Pointing RA	0	179.969628181806	Alternating exposures requested	N	N
[deg] Pointing Dec	0	21.99459978145036	[s] Primary exposure time	0.000000	3.2
[deg] Pointing Roll	0.0	158.2342168926016			
[mm] SIM focus pos	-0.782348	-0.6828225247311905			
[mm] SIM defocus	0	0.8505141146731063			
[mm] SIM translation stage pos	-233.592463	250.466033080201			
[mm] SIM translation stage offset	0	-0.01005468664627074			
[s] Observation start time (MET)	100785893.192	100785892.42331			
Observation start date	2001-03-12T12:04:53	2001-03-12T12:04:52			
[s] Observation end time (MET)	100796403.542	100796402.77372			
Observation end date	2001-03-12T15:00:04	2001-03-12T15:00:02			
Read mode	TIMED	TIMED			

## 2.3 Star Slots

## 2.4 FID Slots

## **A Summary**

### **A.1 Status**

V&V Scientist	Jen Lauer
V&V Date (YYYY-MM-DD)	2012.09.18
V&V Edition	1
V&V Disposition and Status	OK
V&V Charge Time	6.7012000296861

### **A.2 Comments**