

# V&V Reference Report

## L2 ASCDS Version : 8.4.5

Observation 616 - L2 Version 4  
Chandra X-Ray Center

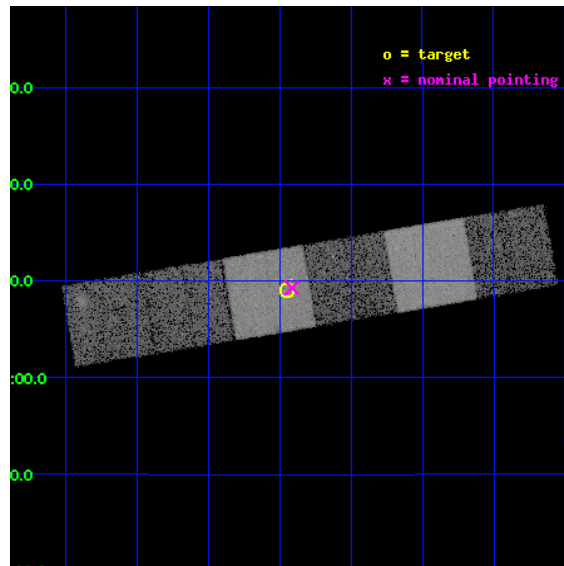
L2 Processing Date : Aug 30 2012

## Contents

<b>1</b>	<b>Front</b>	<b>2</b>
<b>2</b>	<b>OBI</b>	<b>3</b>
2.1	OBI . . . . .	3
2.1.1	Images . . . . .	3
2.1.2	Bias . . . . .	3
2.1.3	Parameters . . . . .	4
2.1.4	Events . . . . .	4
2.2	Compared Parameters . . . . .	5
2.3	Aspect . . . . .	6
2.4	Star Slots . . . . .	9
2.4.1	Slot 3 . . . . .	9
2.4.2	Slot 4 . . . . .	10
2.4.3	Slot 5 . . . . .	11
2.4.4	Slot 6 . . . . .	12
2.4.5	Slot 7 . . . . .	13
2.5	FID Slots . . . . .	14
2.5.1	Slot 0 . . . . .	14
2.5.2	Slot 1 . . . . .	15
2.5.3	Slot 2 . . . . .	16
<b>A</b>	<b>Summary</b>	<b>17</b>
A.1	Status . . . . .	17
A.2	Comments . . . . .	17

# 1 Front

seq_num	200041	Sequence number
obs_id	616	Observation id
title	X-RAY EMISSION AT THE BOTTOM OF THE MAIN SEQUENCE	Proposal title
observer	DR. THOMAS FLEMING	Principal investigator
object	VB 10	Source name
dtcycle	0	&#160
cycle	P	events from which exps? Prim/Second/Both
ra_targ	289.237917	Observer's specified target RA [deg]
dec_targ	5.151361	Observer's specified target Dec [deg]
ra_nom	289.2285241469	Nominal RA [deg]
dec_nom	5.1547510535697	Nominal Dec [deg]
roll_nom	170.42375206102	Nominal Roll [deg]
revision	4	Processing version of data
ontime	12419.200011551	Sum of GTIs [s]
livetime	12261.940623061	Livetime [s]
ontime4	12419.200011551	Sum of GTIs [s]
ontime5	12419.200011551	Sum of GTIs [s]
ontime6	12419.200011551	Sum of GTIs [s]
ontime7	12419.200011551	Sum of GTIs [s]
ontime8	12419.200011551	Sum of GTIs [s]
ontime9	12419.200011551	Sum of GTIs [s]
l2events	118321	Number of level 2 events

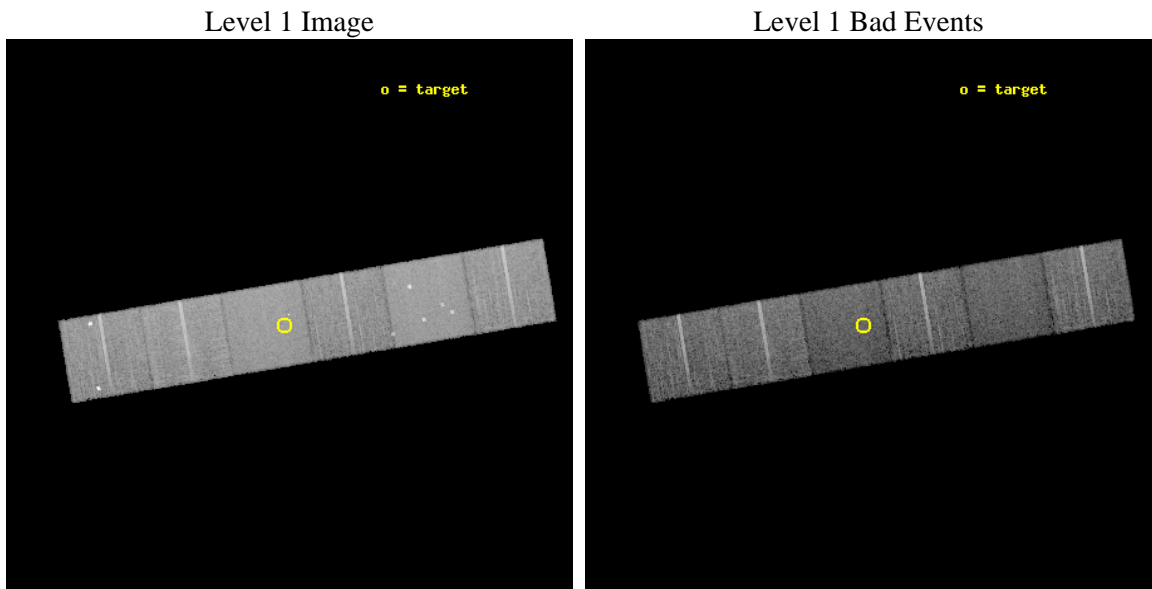




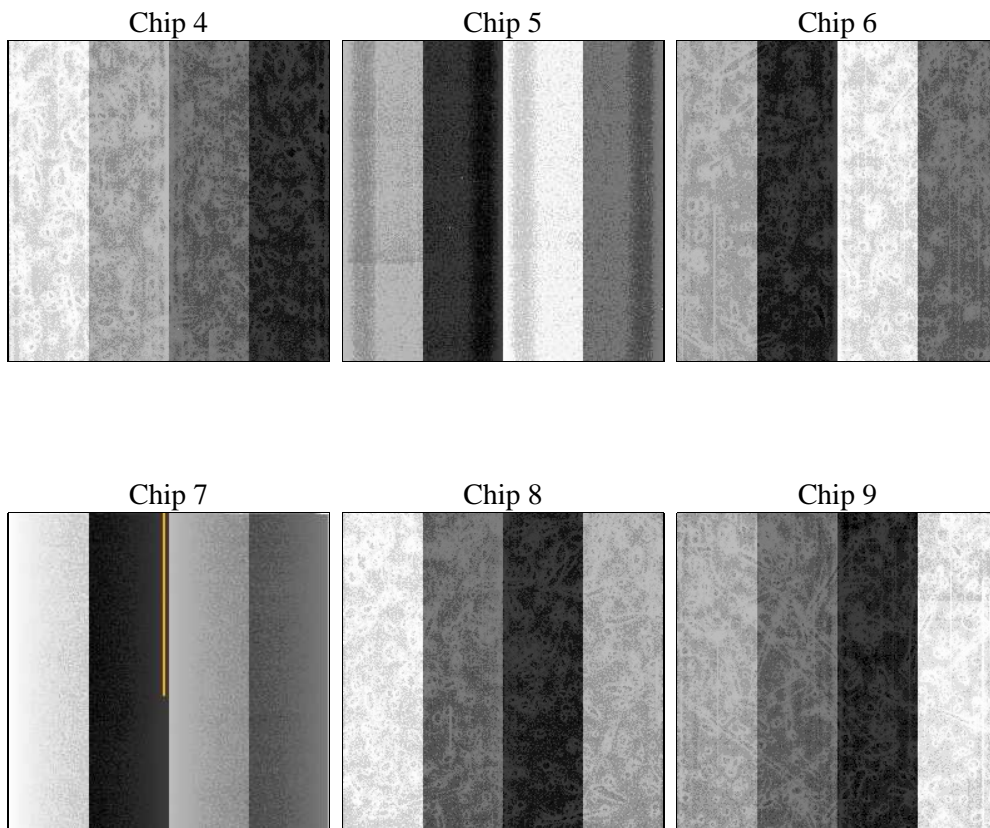
## 2 OBI

### 2.1 OBI

#### 2.1.1 Images



#### 2.1.2 Bias



### 2.1.3 Parameters

obi_num	0	Obi number	sched_exp_time	12285.000000	[s] Scheduled observation exposure time
ascdsver	8.4.5	Processing system revision	ontime	12419.200011551	Sum of GTIs [s]
caldsver	4.5.1.1	&#160	ontime4	12419.200011551	Sum of GTIs [s]
date	2012-08-30T03:44:40	Date and time of file creation	ontime5	12419.200011551	Sum of GTIs [s]
revision	4	Processing version of data	ontime6	12419.200011551	Sum of GTIs [s]
			ontime7	12419.200011551	Sum of GTIs [s]
			ontime8	12419.200011551	Sum of GTIs [s]
			ontime9	12419.200011551	Sum of GTIs [s]
			l1events	593584	Number of level 1 events

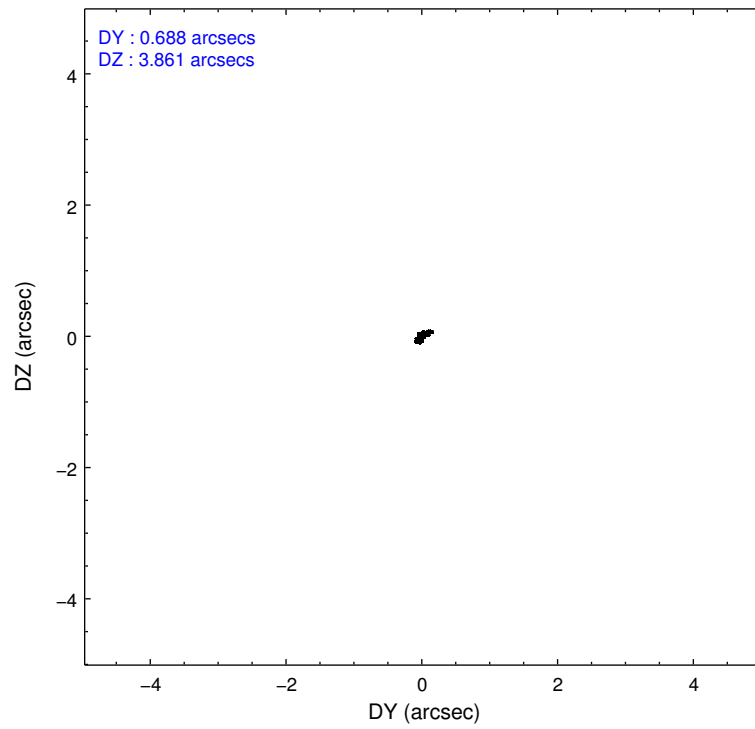
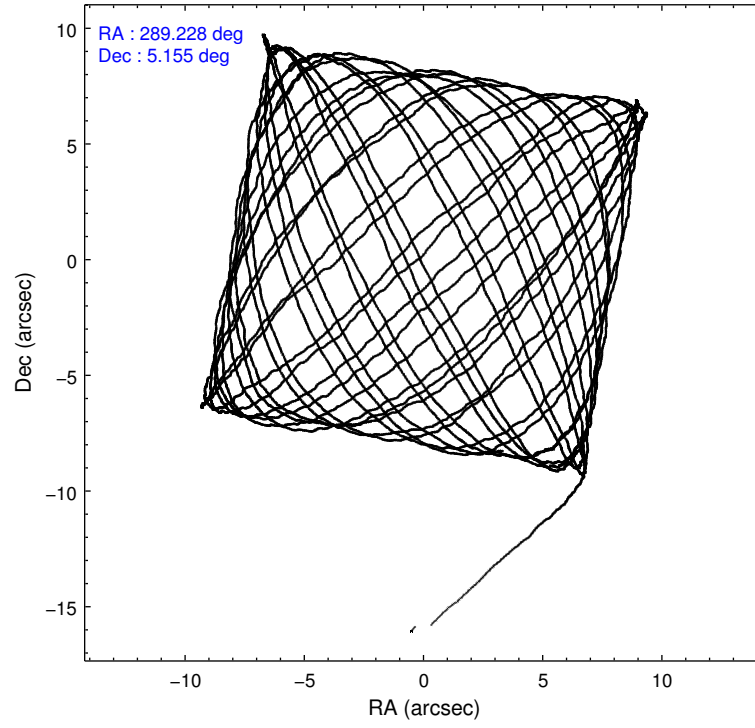
### 2.1.4 Events

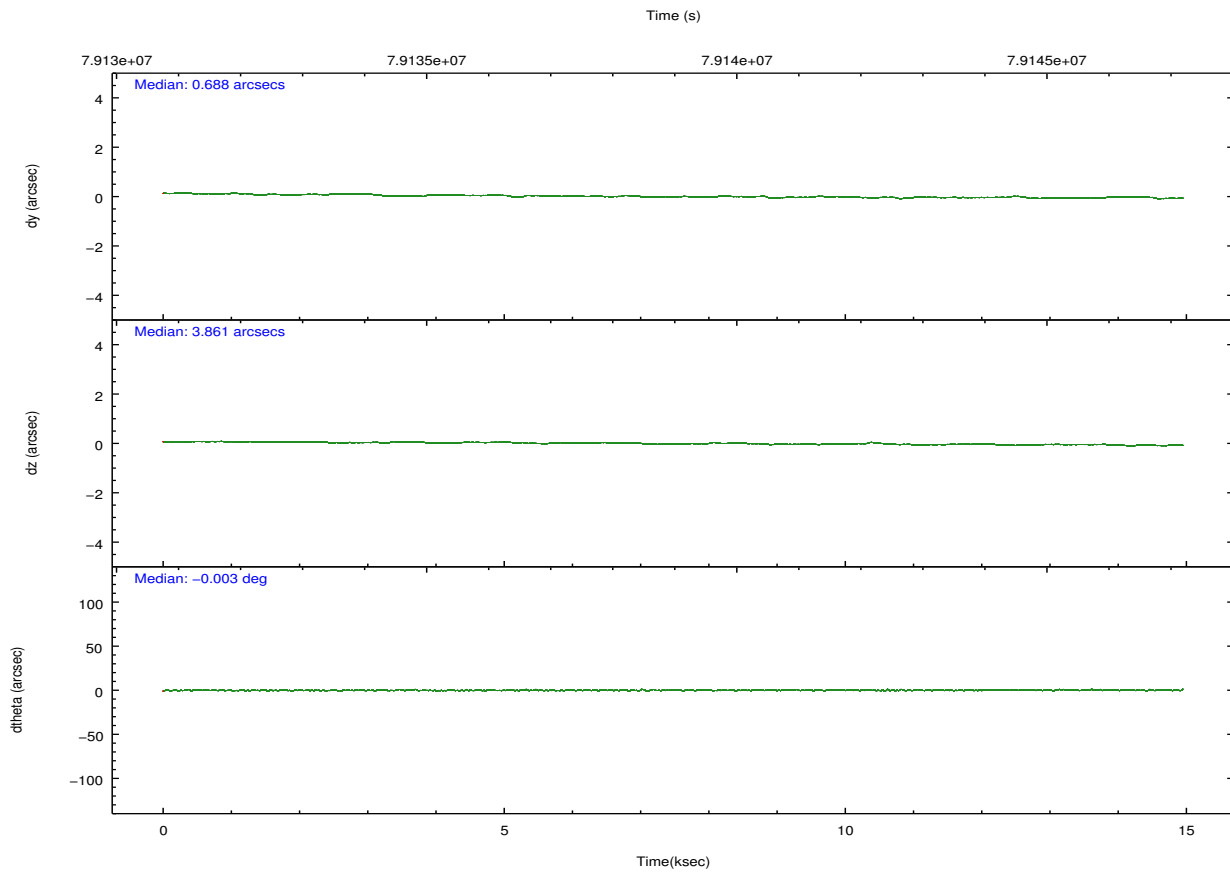
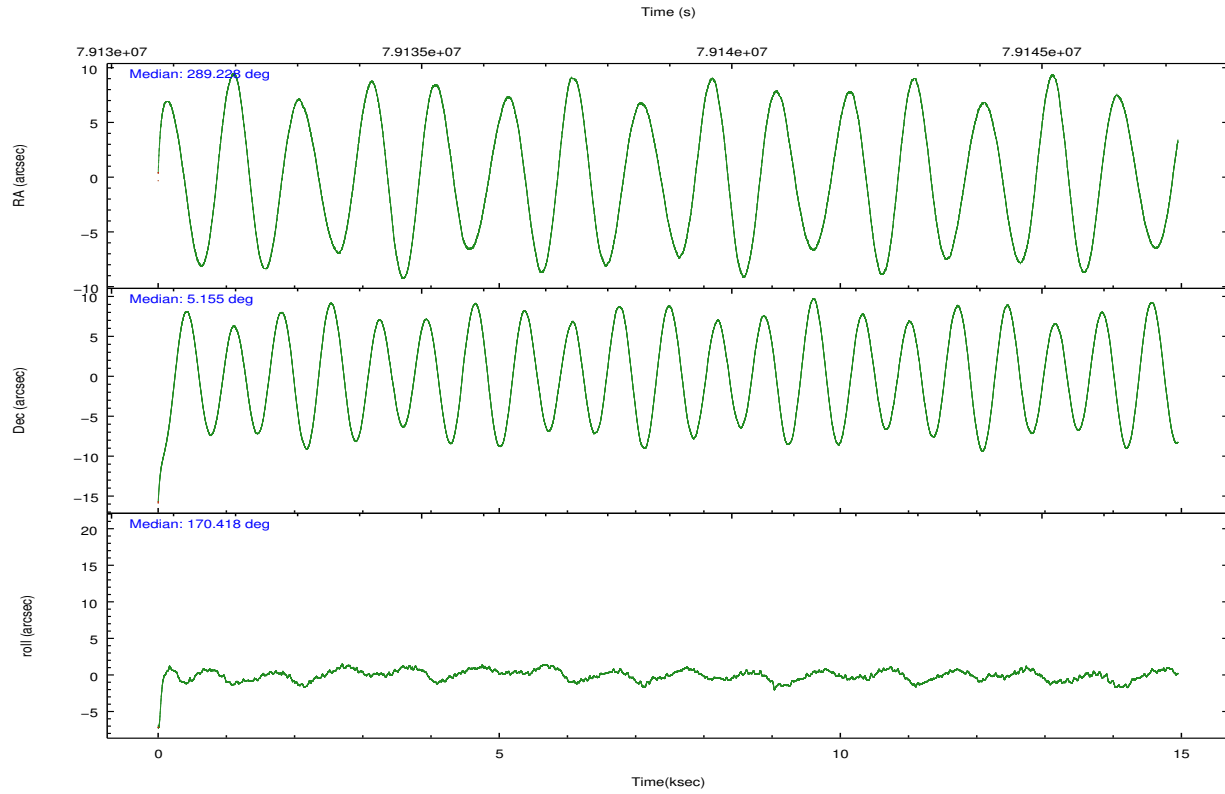
	ccd 4	ccd 5	ccd 6	ccd 7	ccd 8	ccd 9		ccd 4	ccd 5	ccd 6	ccd 7	ccd 8	ccd 9
level 1 events	95566	114126	84218	100336	105531	93807	grade 0 events	4028	8852	3794	4235	6327	4233
rejected events	86170	61415	75269	59300	86251	76960		4%	7%	4%	4%	5%	4%
rejected %	90%	53%	89%	59%	81%	82%	grade 1 events	41	203	35	111	47	44
								0%	0%	0%	0%	0%	0%
							grade 2 events	2222	14741	1769	8336	4350	9346
								2%	12%	2%	8%	4%	9%
							grade 3 events	937	2203	960	3855	2145	946
								0%	1%	1%	3%	2%	1%
							grade 4 events	873	2084	946	3800	1995	922
								0%	1%	1%	3%	1%	0%
							grade 5 events	2628	8304	3241	9627	4067	3174
								2%	7%	3%	9%	3%	3%
							grade 6 events	1595	26377	1756	21948	4983	1874
								1%	23%	2%	21%	4%	1%
							grade 7 events	83242	51362	71717	48424	81617	73268
								87%	45%	85%	48%	77%	78%

## 2.2 Compared Parameters

Parameter	Planned	Actual	Parameter	Planned	Actual
Instrument	ACIS	ACIS	Obspar format version number	7	7
Detector	ACIS-456789	ACIS-456789	Obspar file type	PREDICTED	ACTUAL
Grating	NONE	NONE	Obspar update status	NONE	UPDATED
Data mode	FAINT	FAINT	Number of optional ACIS chips dropped	0	0
Observation mode	POINTING	POINTING	On-chip summing requested	N	N
[deg] Pointing RA	289.254266	289.2285241468996	Subarray requested	NONE	NONE
[deg] Pointing Dec	5.164461	5.154751053569675	Alternating exposures requested	N	N
[deg] Pointing Roll	170.264807	170.4237520610208	[s] Primary exposure time	0.000000	3.2
[mm] SIM focus pos	-0.684267	-0.6828225247311905			
[mm] SIM defocus	0	0.001444936568705701			
[mm] SIM translation stage pos	-190.132523	-190.1425803651734			
[mm] SIM translation stage offset	0	0.01005778216563158			
[s] Observation start time (MET)	79131641.184000	79130418.32705			
Observation start date	2000-07-04T20:59:37	2000-07-04T20:40:18			
[s] Observation end time (MET)	79143926.184000	79147054.59016301			
Observation end date	2000-07-05T00:24:22	2000-07-05T01:17:34			
Read mode	TIMED	TIMED			

## 2.3 Aspect



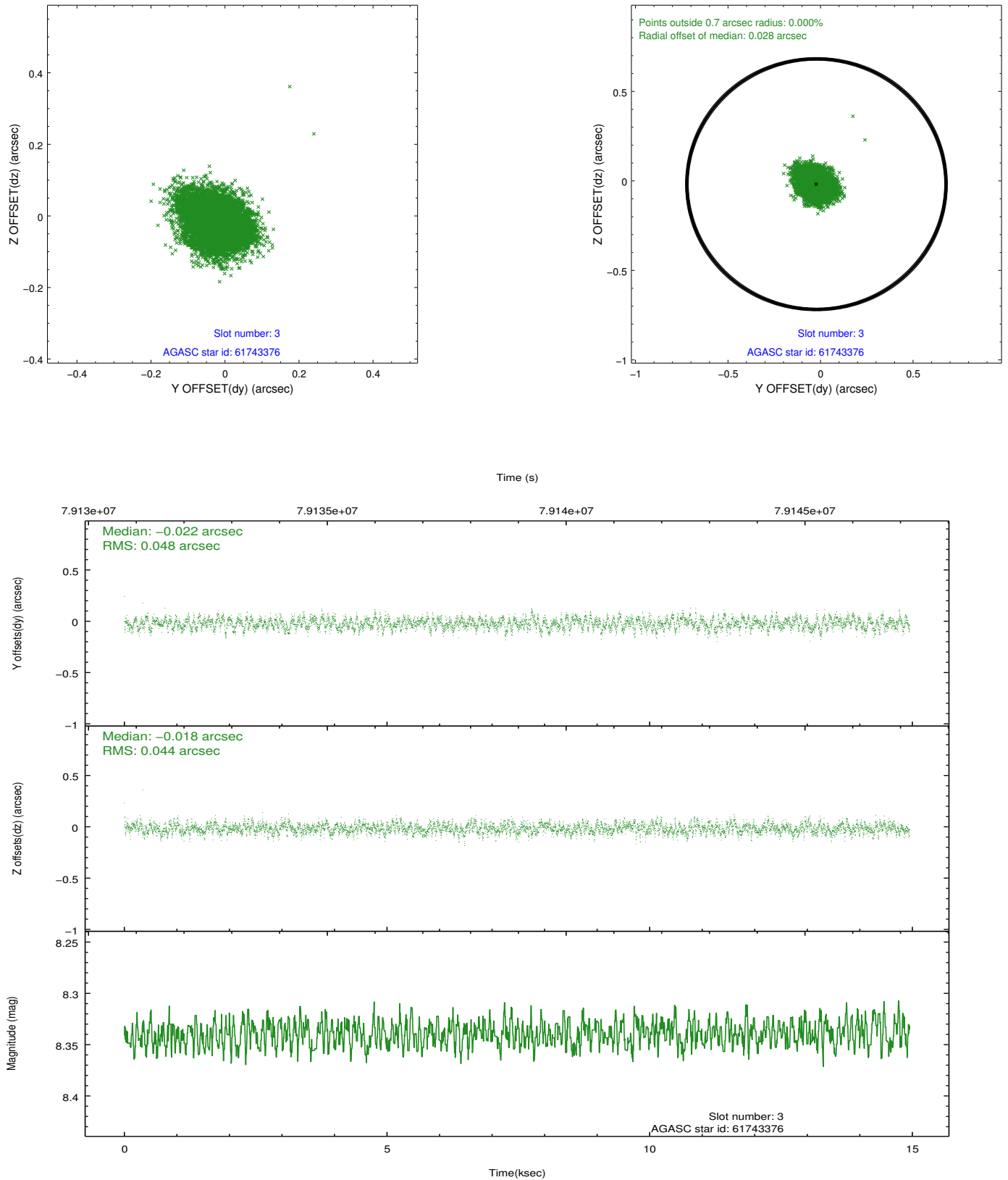


### Slot Statistics

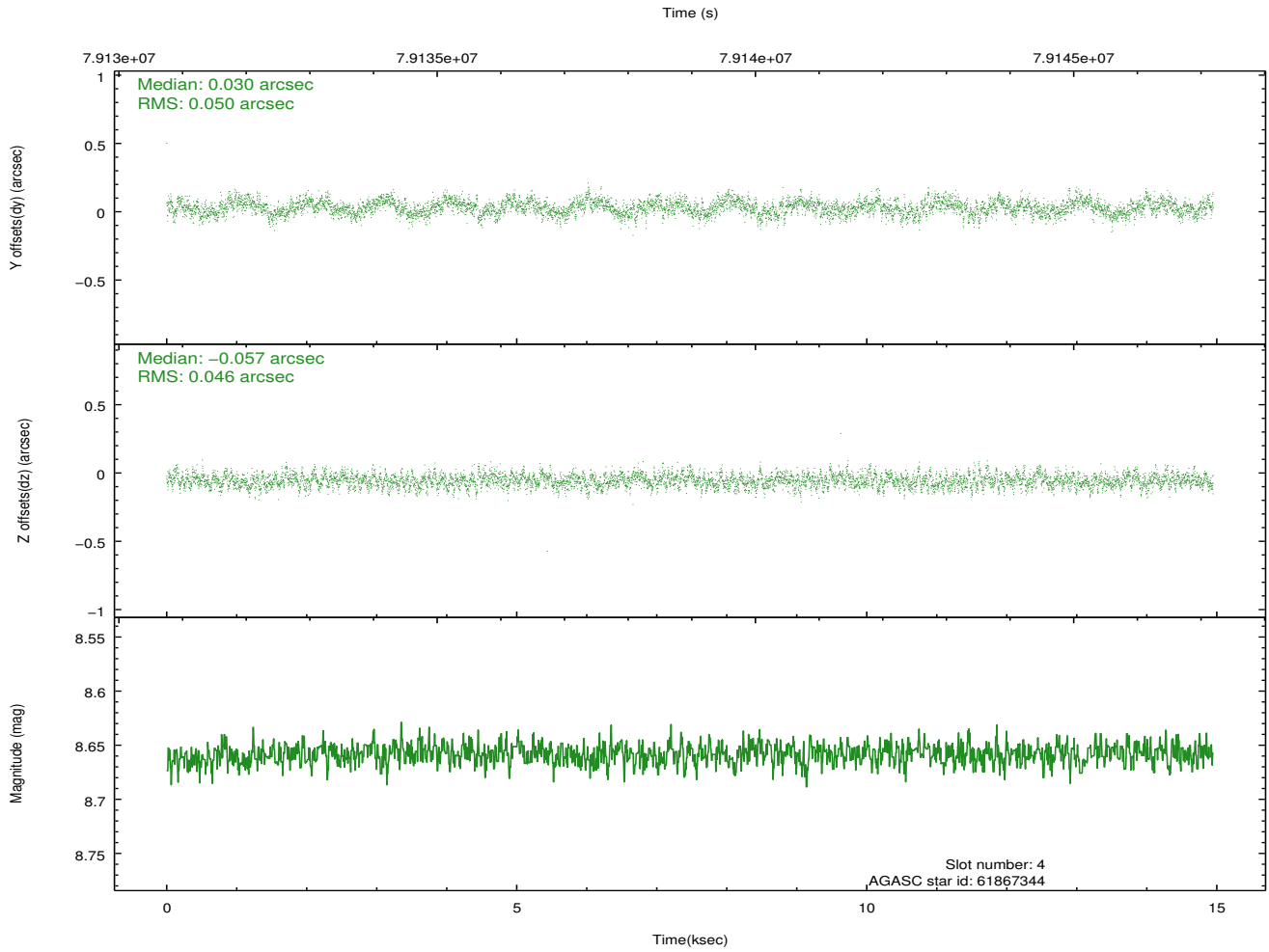
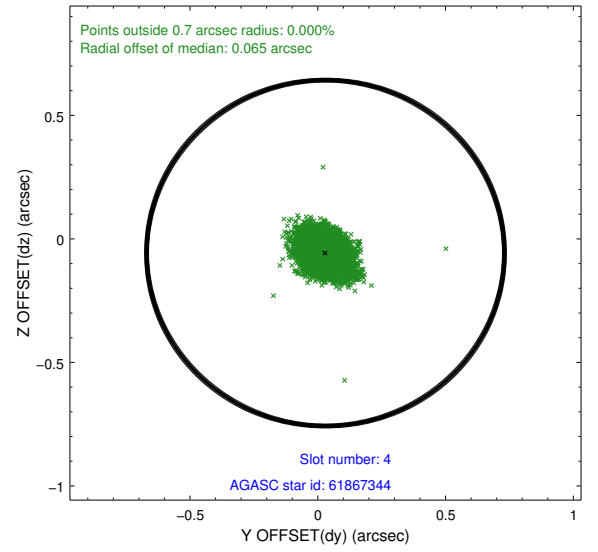
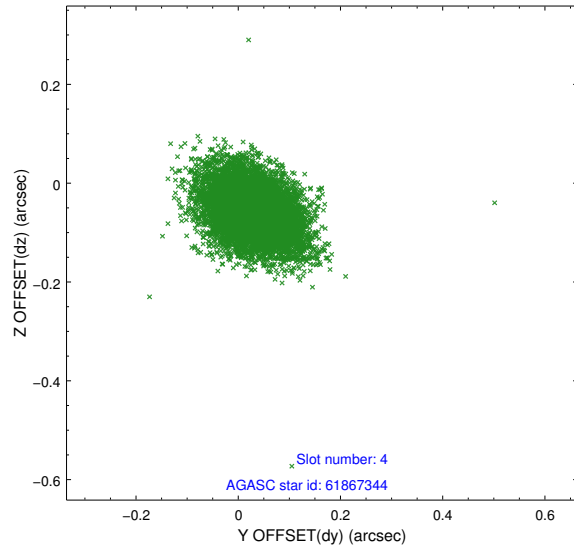
slot	status	id	mag	n_pts	med_dy	med_dz	dr1	dr2	ra	dec	mean_y	mean_z
0	FID	ACIS-S-2	7.11	3647	-0.021	-0.029	0.007	0.011	0.000000	0.000000	-753.33	-1724.90
1	FID	ACIS-S-4	7.21	3644	0.029	0.018	0.006	0.010	0.000000	0.000000	2159.89	183.27
2	FID	ACIS-S-5	7.24	3644	-0.039	0.020	0.006	0.011	0.000000	0.000000	-1805.77	177.35
3	GUIDE	61743376	8.34	7288	-0.022	-0.018	0.069	0.111	288.690993	4.620047	1660.57	2272.72
4	GUIDE	61867344	8.66	7293	0.030	-0.057	0.071	0.119	289.421608	4.970198	-709.68	587.83
5	GUIDE	62408720	8.66	7291	-0.026	0.087	0.070	0.112	289.272224	5.771976	306.42	-2166.31
6	GUIDE	61885144	8.84	7287	0.034	-0.015	0.071	0.119	289.587481	4.886412	-1347.33	783.65
7	GUIDE	61874512	9.14	7292	-0.013	0.002	0.073	0.119	289.461688	5.255068	-677.96	-447.37

## 2.4 Star Slots

### 2.4.1 Slot 3

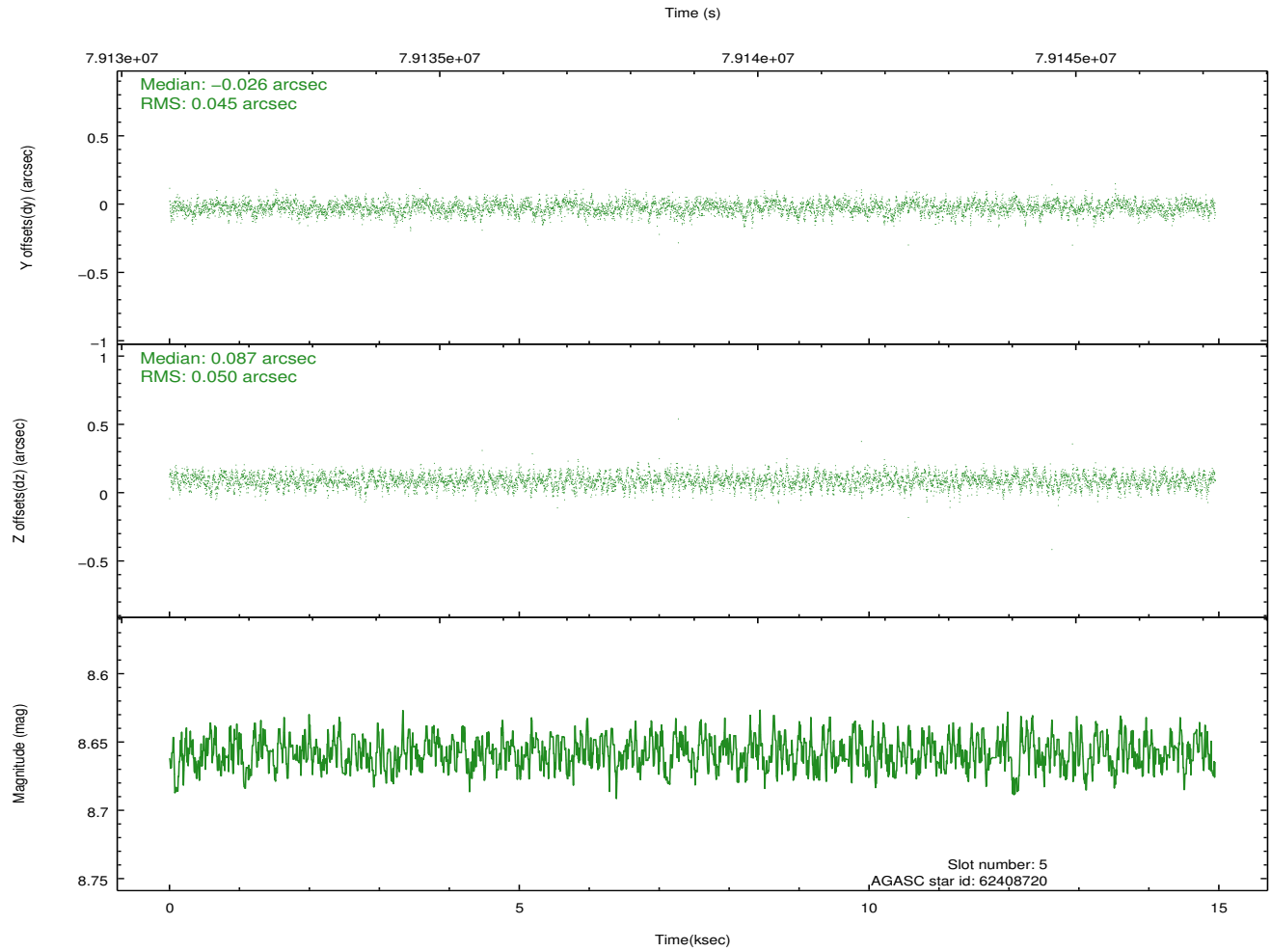
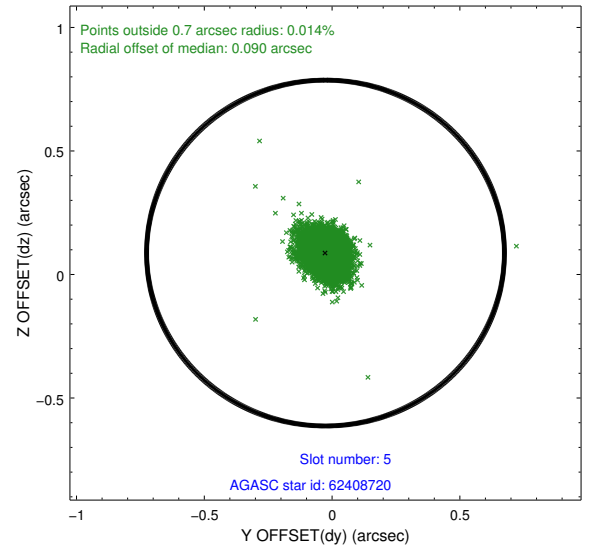
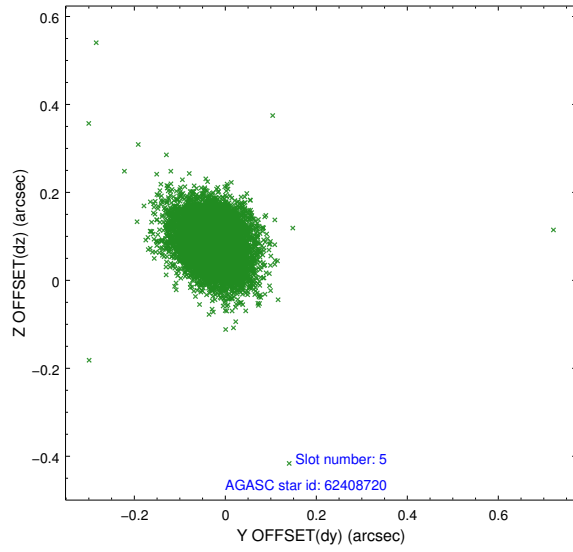


## 2.4.2 Slot 4

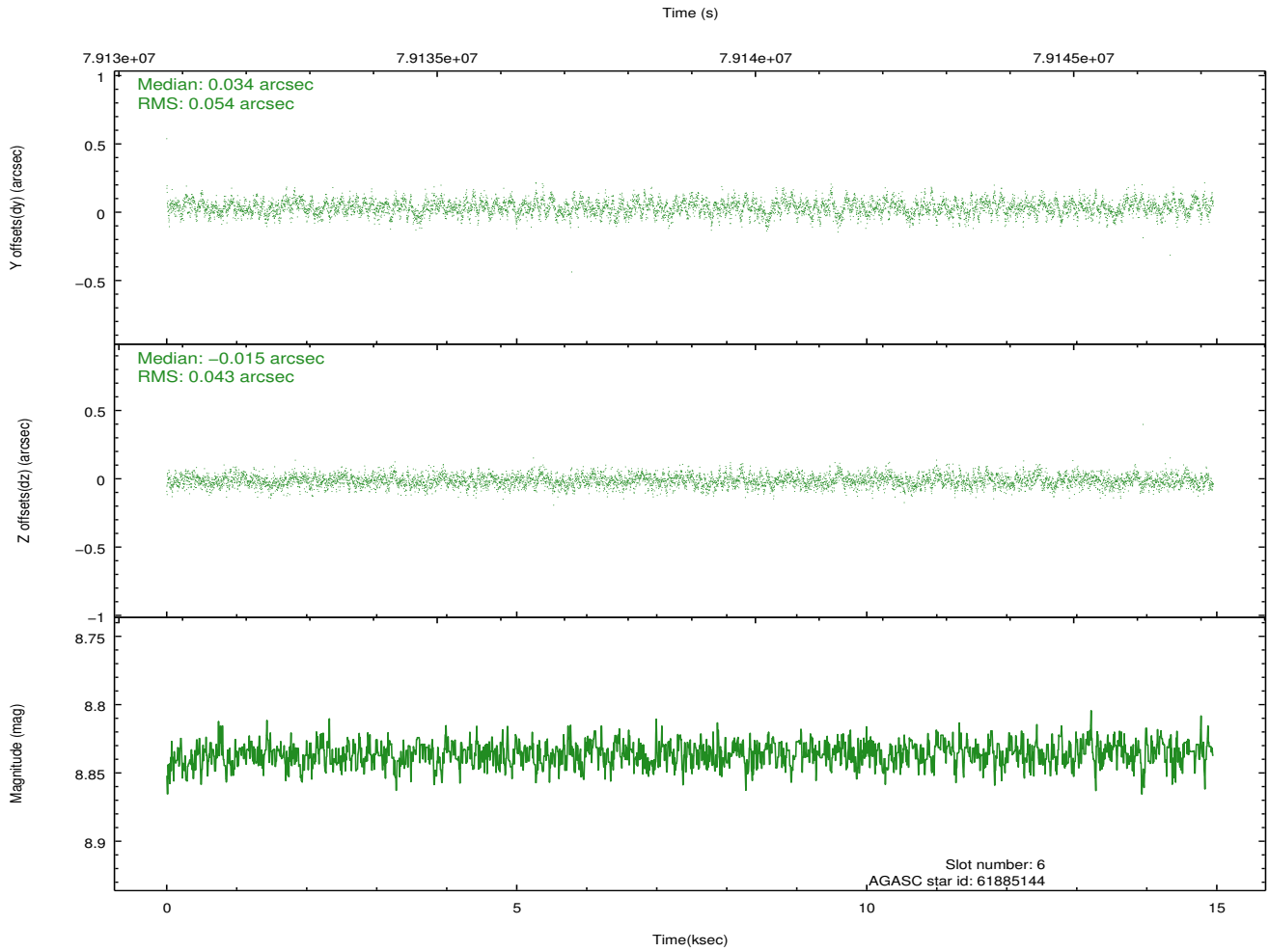
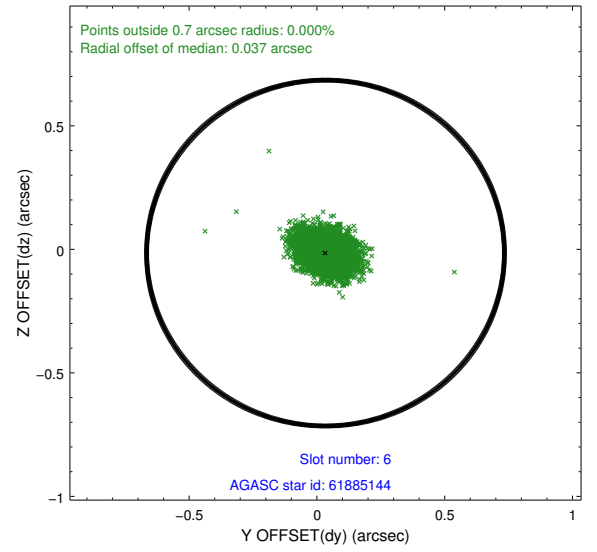
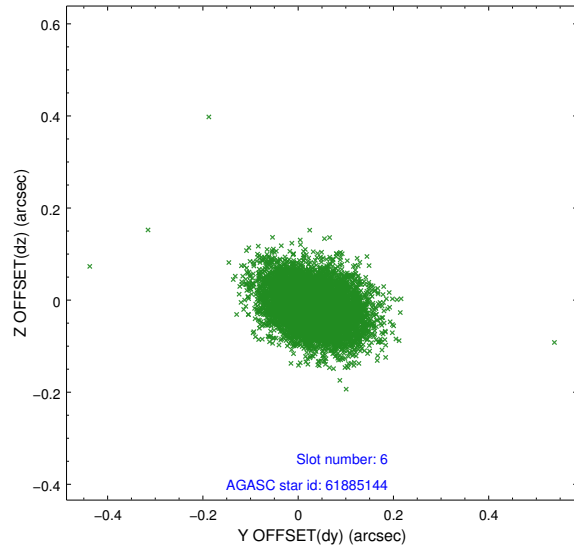




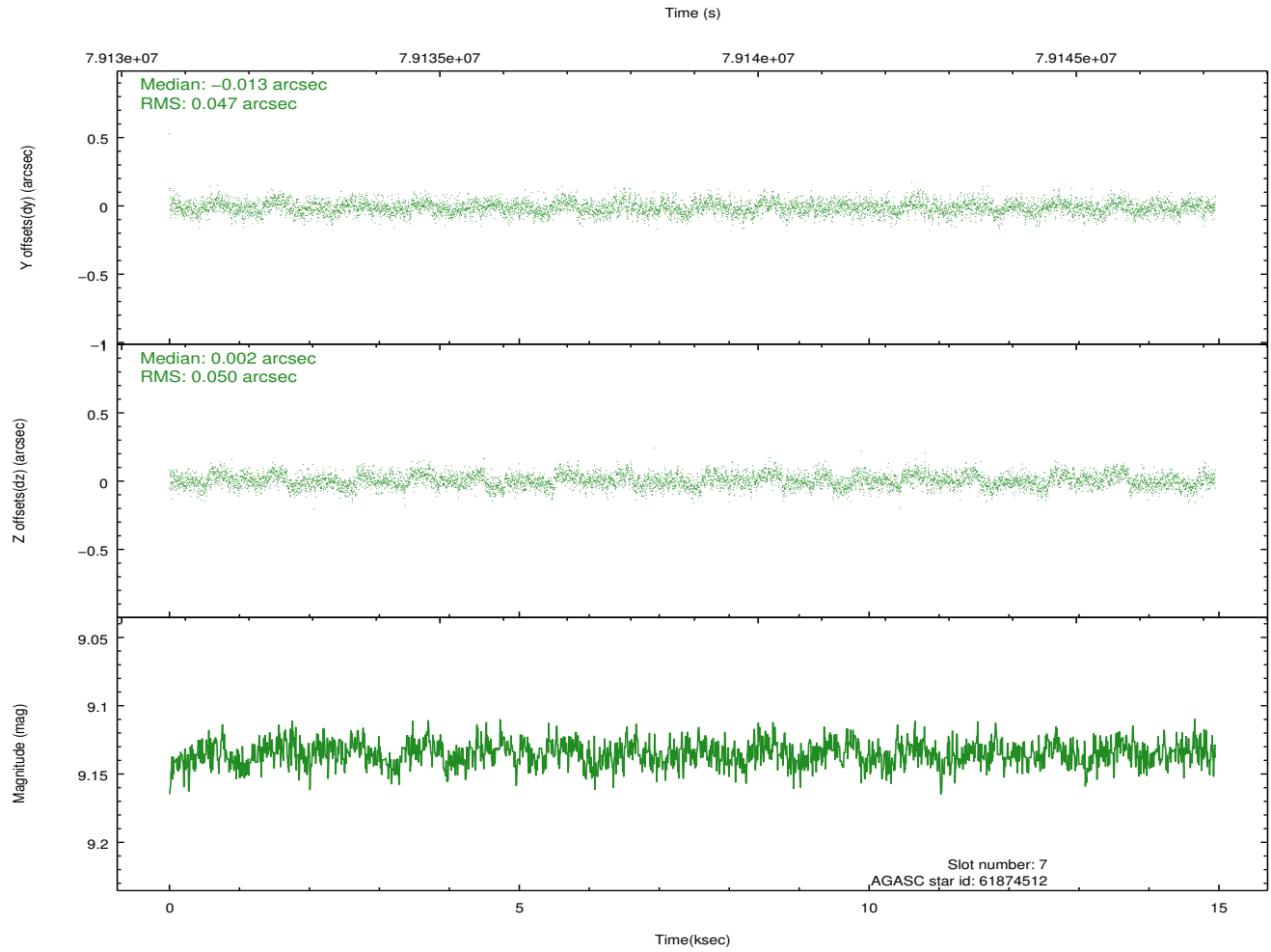
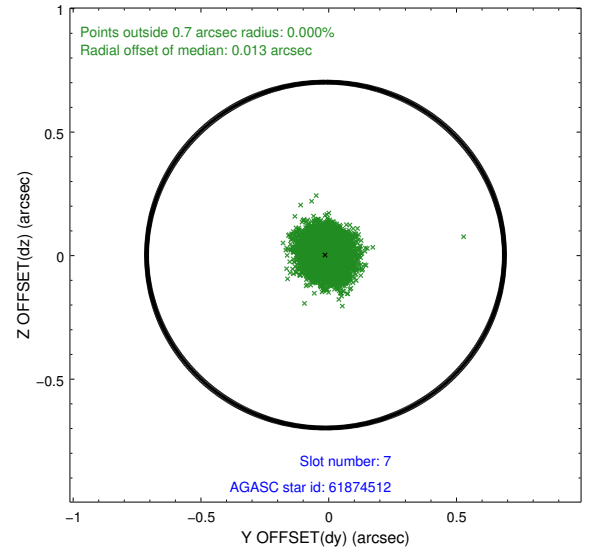
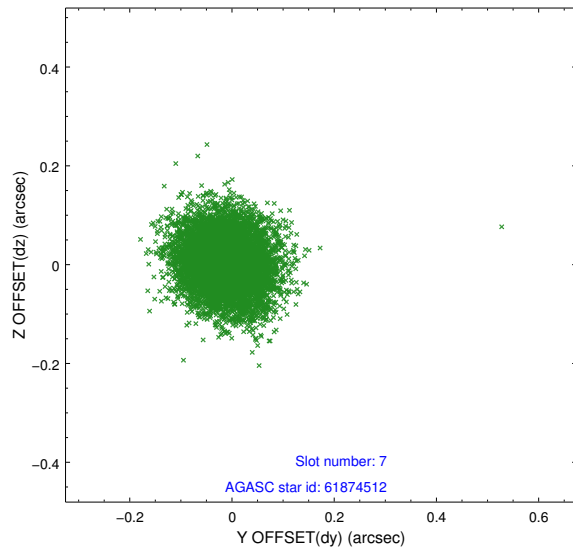
### 2.4.3 Slot 5



## 2.4.4 Slot 6

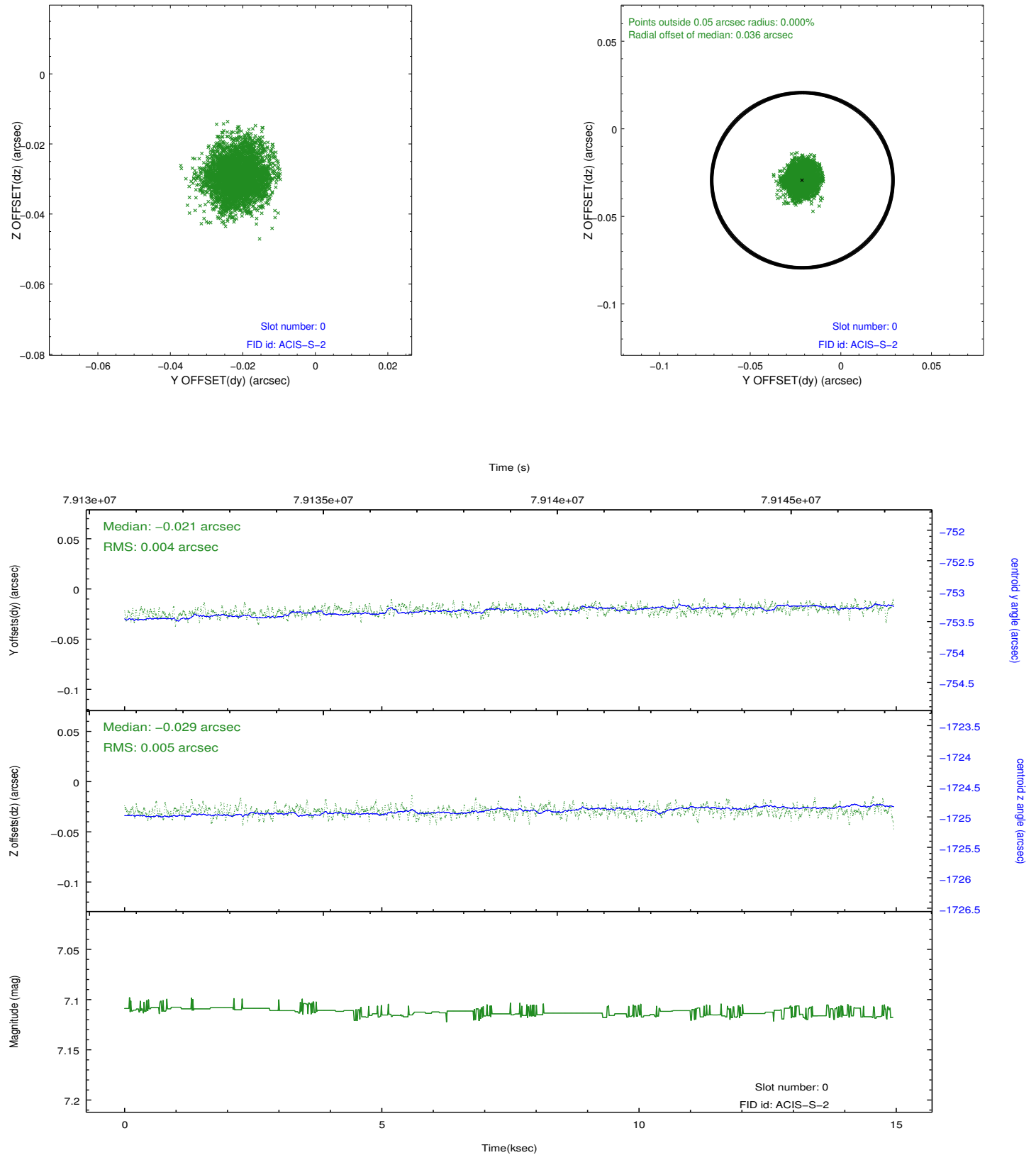


## 2.4.5 Slot 7

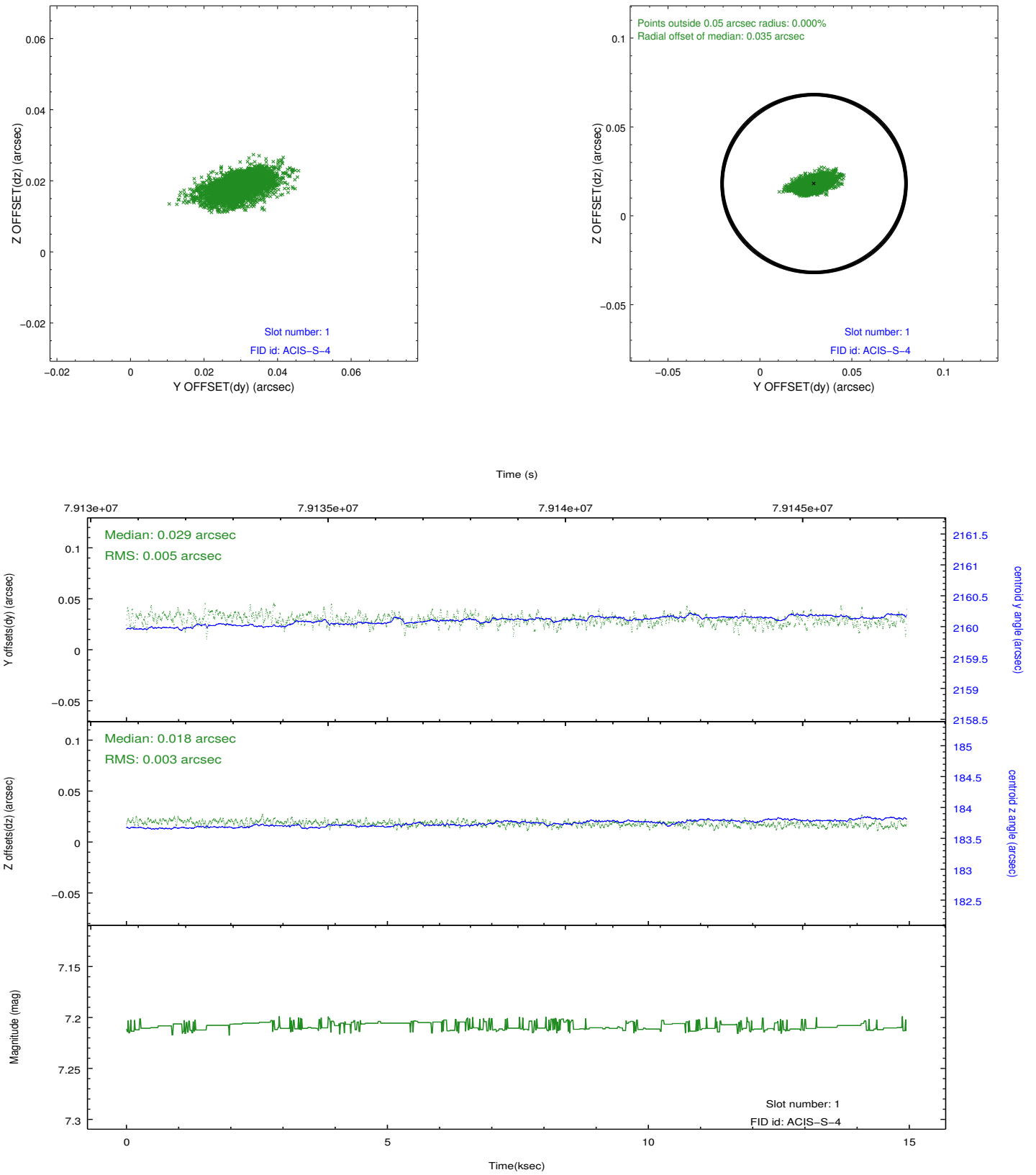


## 2.5 FID Slots

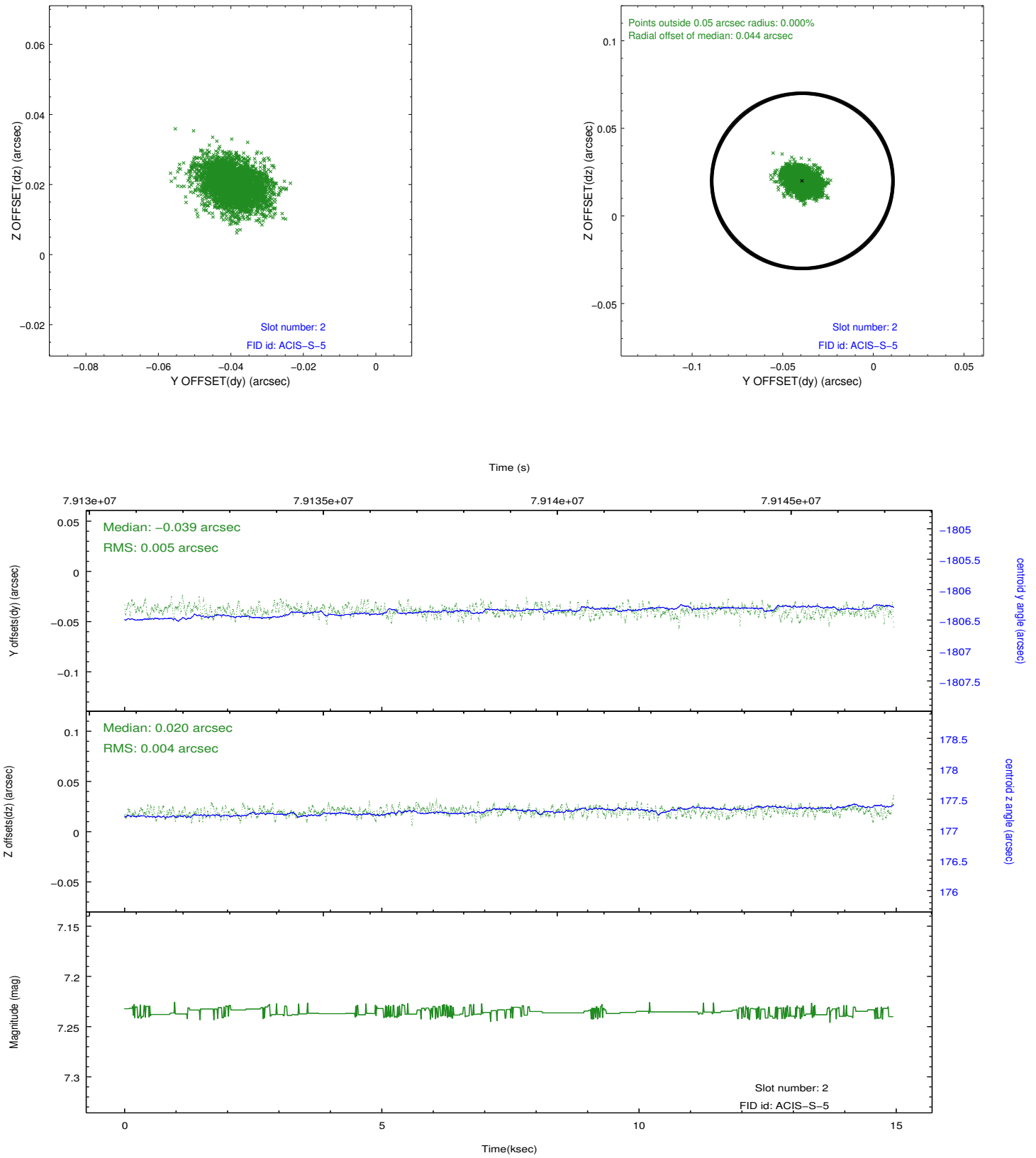
### 2.5.1 Slot 0



## 2.5.2 Slot 1



### 2.5.3 Slot 2



## A Summary

### A.1 Status

V&V Scientist	Beth Sundheim
V&V Date (YYYY-MM-DD)	2012.09.04
V&V Edition	1
V&V Disposition and Status	OK
V&V Charge Time	12.428

### A.2 Comments