

# V&V Reference Report

## L2 ASCDS Version : 7.6.10

Observation 61396 - L2 Version 001  
Chandra X-Ray Center

L2 Processing Date : Jan 21 2007

## Contents

<b>1</b>	<b>Front</b>	<b>2</b>
<b>2</b>	<b>OBI</b>	<b>3</b>
2.1	OBI . . . . .	3
2.1.1	Images . . . . .	3
2.1.2	Bias . . . . .	3
2.1.3	Parameters . . . . .	4
2.1.4	Events . . . . .	4
2.2	Compared Parameters . . . . .	5
2.3	Star Slots . . . . .	6
2.4	FID Slots . . . . .	6
<b>A</b>	<b>Summary</b>	<b>7</b>
A.1	Status . . . . .	7
A.2	Comments . . . . .	7

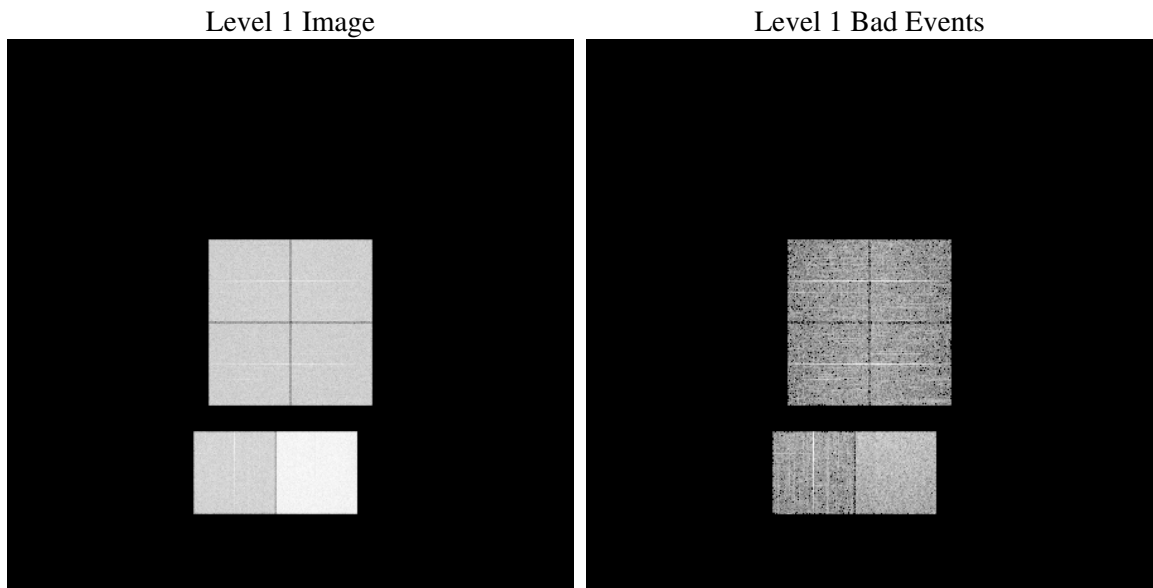
# 1 Front

seq_num	&#160
obs_id	61396
title	ACIS-012367 diagnostics
observer	CHANDRA engineering request/realtime commanding
object	&#160
dtcycle	0
cycle	P
ra_targ	0.0
dec_targ	0.0
ra_nom	258.79115910972
dec_nom	38.029497767166
roll_nom	349.490791761
revision	2
ontime	8101.320620358
livetime	7998.7368206334
ontime0	3144.81733042
ontime1	3203.1553127468
ontime2	3032.5544673651
ontime3	3042.1131679118
ontime6	3355.4834347814
ontime7	8101.320620358
l2events	1322509

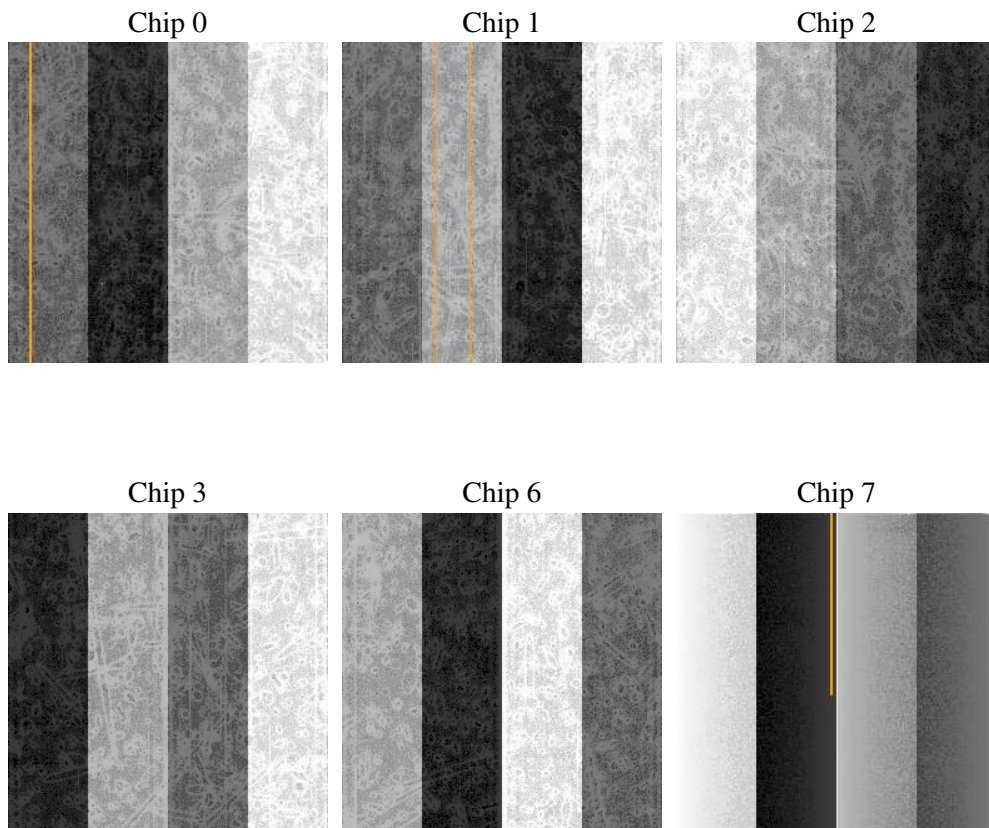
## 2 OBI

### 2.1 OBI

#### 2.1.1 Images



#### 2.1.2 Bias



### 2.1.3 Parameters

obi_num	1
ascdsver	7.6.10
caldbver	3.3.0
date	2007-01-20T16:11:46
revision	2

sched_exp_time	0.0
ontime	8101.320620358
ontime0	3144.81733042
ontime1	3203.1553127468
ontime2	3032.5544673651
ontime3	3042.1131679118
ontime6	3355.4834347814
ontime7	8101.320620358
l1events	1538345

### 2.1.4 Events

	ccd 0	ccd 1	ccd 2	ccd 3	ccd 6	ccd 7
level 1 events	200309	203291	196071	196519	223708	518447
rejected events	22575	23096	22908	23542	25539	42818
rejected %	11%	11%	11%	11%	11%	8%

	ccd 0	ccd 1	ccd 2	ccd 3	ccd 6	ccd 7
grade 0 events	97893	99438	96206	96812	107837	120593
	48%	48%	49%	49%	48%	23%
grade 1 events	517	486	459	541	541	296
	0%	0%	0%	0%	0%	0%
grade 2 events	31264	31712	30516	30114	34301	105412
	15%	15%	15%	15%	15%	20%
grade 3 events	11335	11508	10913	11034	12219	48345
	5%	5%	5%	5%	5%	9%
grade 4 events	11290	11317	10840	10996	12215	47961
	5%	5%	5%	5%	5%	9%
grade 5 events	1703	1711	1562	1627	1973	8954
	0%	0%	0%	0%	0%	1%
grade 6 events	25952	26220	24688	24021	31597	153318
	12%	12%	12%	12%	14%	29%
grade 7 events	20355	20899	20887	21374	23025	33568
	10%	10%	10%	10%	10%	6%

## 2.2 Compared Parameters

Parameter	Planned	Actual	Parameter	Planned	Actual
Instrument	ACIS	ACIS	Obspar format version number	6	6
Detector	ACIS-012367	ACIS-012367	Obspar file type	PREDICTED	ACTUAL
Grating	NONE	NONE	Obspar update status	NONE	UPDATED
Data mode	FAINT	FAINT	On-chip summing requested	N	N
Observation mode	SECONDARY	SECONDARY	Subarray requested	NONE	NONE
Pointing RA	0	258.7911591097221	Alternating exposures requested	N	N
Pointing Dec	0	38.02949776716572	Primary exposure time	0.000000	3.2
Pointing Roll	0.0	349.4907917610045			
SIM focus pos (mm)	-0.782348	-0.7809083437167272			
SIM defocus (mm)	0	0.7524282956875696			
SIM translation stage pos (mm)	-233.592463	250.466033080201			
SIM translation stage offset (mm)	0	-0.01005468664627074			
Observation start time	123625382.788	123625382.01996			
Observation start date	2001-12-01T20:23:03	2001-12-01T20:23:02			
Observation end time	123842945.197	123842944.42867			
Observation end date	2001-12-04T08:49:05	2001-12-04T08:49:04			
Read mode	TIMED	TIMED			

## **2.3 Star Slots**

## **2.4 FID Slots**

## A Summary

### A.1 Status

V&V Scientist	Beth Sundheim
V&V Date (YYYY-MM-DD)	2007.01.21
V&V Edition	1
V&V Disposition and Status	OK
V&V Charge Time	8.10132062

### A.2 Comments