

V&V Reference Report

L2 ASCDS Version : 7.6.10

Observation 61386 - L2 Version 001
Chandra X-Ray Center

L2 Processing Date : Jan 18 2007

Contents

1	Front	2
2	OBI	3
2.1	OBI	3
2.1.1	Images	3
2.1.2	Bias	3
2.1.3	Parameters	4
2.1.4	Events	4
2.2	Compared Parameters	5
2.3	Star Slots	6
2.4	FID Slots	6
A	Summary	7
A.1	Status	7
A.2	Comments	7

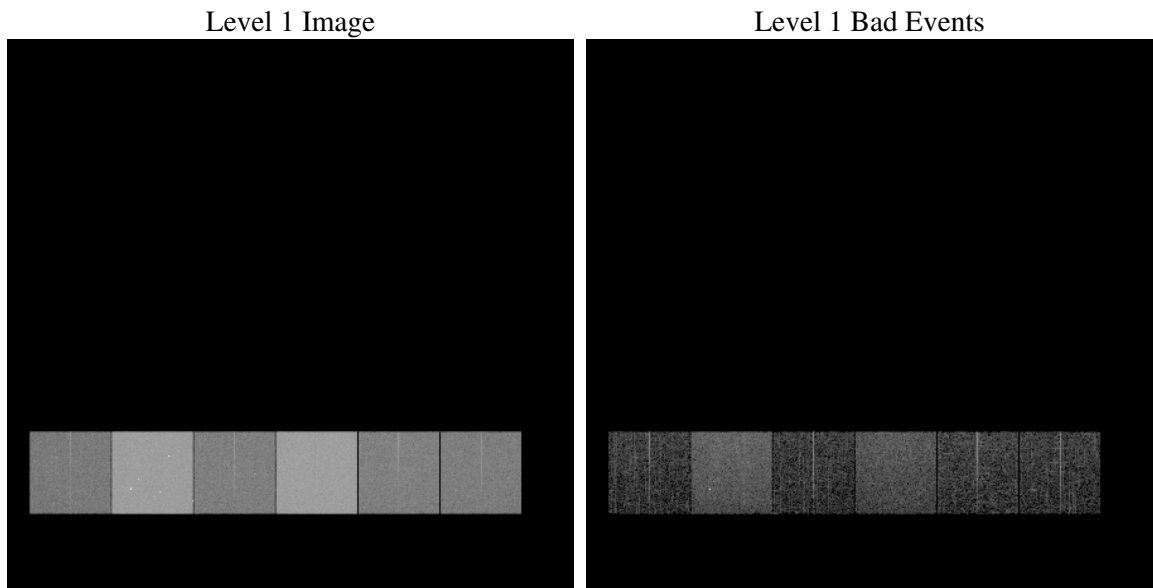
1 Front

seq_num	
obs_id	61386
title	ACIS-456789 diagnostics
observer	CHANDRA engineering request/realtime commanding
object	
dtcycle	0
cycle	P
ra_targ	0.0
dec_targ	0.0
ra_nom	334.02853969373
dec_nom	-56.023788371637
roll_nom	271.05528591103
revision	2
ontime	6780.7468494177
livetime	6694.8849499348
ontime4	2493.0426717401
ontime5	7224.798924163
ontime6	2732.8378633708
ontime7	6780.7468494177
ontime8	2755.6073230952
ontime9	2671.1355419159
l2events	1308872

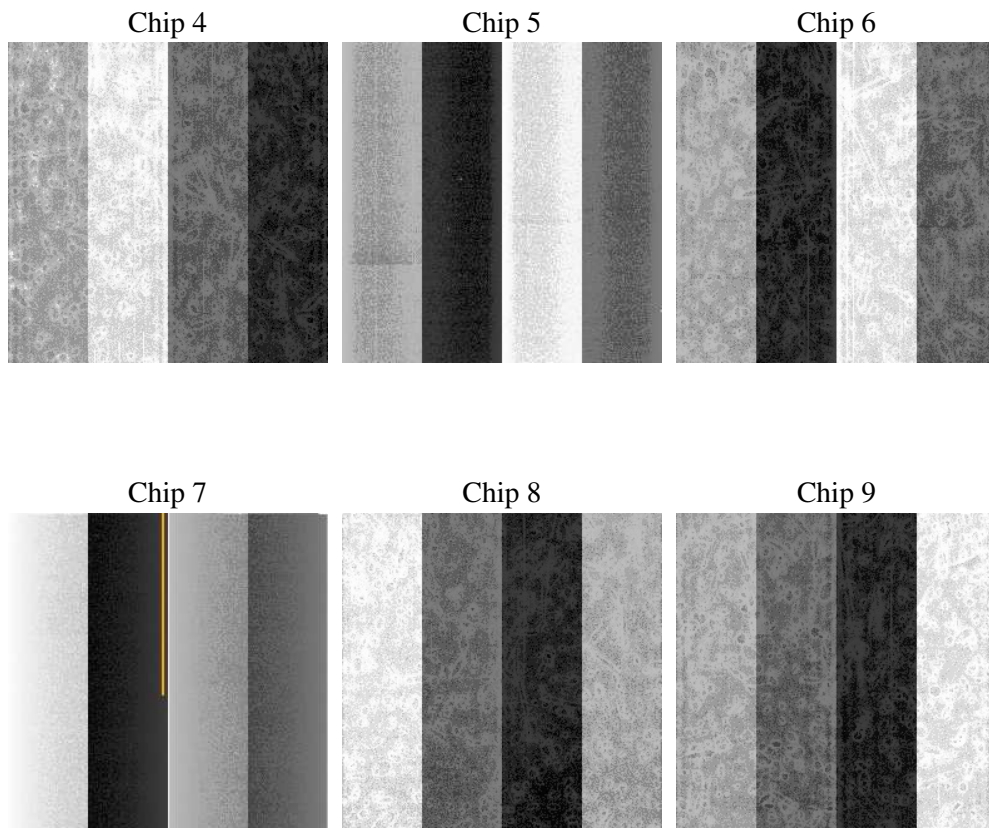
2 OBI

2.1 OBI

2.1.1 Images



2.1.2 Bias



2.1.3 Parameters

obi_num	0
ascdsver	7.6.10
caldsver	3.3.0
date	2007-01-18T09:30:16
revision	2

sched_exp_time	0.0
ontime	6780.7468494177
ontime4	2493.0426717401
ontime5	7224.798924163
ontime6	2732.8378633708
ontime7	6780.7468494177
ontime8	2755.6073230952
ontime9	2671.1355419159
l1events	1543837

2.1.4 Events

	ccd 4	ccd 5	ccd 6	ccd 7	ccd 8	ccd 9
level 1 events	156739	419971	180383	429591	185837	171316
rejected events	21320	53658	20599	37295	23707	20871
rejected %	13%	12%	11%	8%	12%	12%

	ccd 4	ccd 5	ccd 6	ccd 7	ccd 8	ccd 9
grade 0 events	76364	85634	86958	98787	89187	82473
	48%	20%	48%	22%	47%	48%
grade 1 events	437	290	449	280	446	386
	0%	0%	0%	0%	0%	0%
grade 2 events	24010	134038	27839	86487	28632	26707
	15%	31%	15%	20%	15%	15%
grade 3 events	8542	22405	9927	40043	10131	9289
	5%	5%	5%	9%	5%	5%
grade 4 events	8234	22310	9952	39363	10322	9256
	5%	5%	5%	9%	5%	5%
grade 5 events	1359	9903	1578	7628	1806	1568
	0%	2%	0%	1%	0%	0%
grade 6 events	18570	102115	25282	127799	24052	22887
	11%	24%	14%	29%	12%	13%
grade 7 events	19223	43276	18398	29204	21261	18750
	12%	10%	10%	6%	11%	10%

2.2 Compared Parameters

Parameter	Planned	Actual	Parameter	Planned	Actual
Instrument	ACIS	ACIS	Obspar format version number	6	6
Detector	ACIS-456789	ACIS-456789	Obspar file type	PREDICTED	ACTUAL
Grating	NONE	NONE	Obspar update status	NONE	UPDATED
Data mode	FAINT	FAINT	On-chip summing requested	N	N
Observation mode	SECONDARY	SECONDARY	Subarray requested	NONE	NONE
Pointing RA	0	334.0285396937343	Alternating exposures requested	N	N
Pointing Dec	0	-56.02378837163734	Primary exposure time	0.000000	3.2
Pointing Roll	0.0	271.0552859110299			
SIM focus pos (mm)	-0.684267	-0.6828225247311905			
SIM defocus (mm)	0	0.8505141146731063			
SIM translation stage pos (mm)	-190.132523	250.466033080201			
SIM translation stage offset (mm)	0	-0.01005468664627074			
Observation start time	124534559.875	124534559.10635			
Observation start date	2001-12-12T08:56:00	2001-12-12T08:55:59			
Observation end time	124555869.626	124555868.8572			
Observation end date	2001-12-12T14:51:10	2001-12-12T14:51:08			
Read mode	TIMED	TIMED			

2.3 Star Slots

2.4 FID Slots

A Summary

A.1 Status

V&V Scientist	Jen Lauer
V&V Date (YYYY-MM-DD)	2007.01.18
V&V Edition	1
V&V Disposition and Status	OK
V&V Charge Time	6.78074684

A.2 Comments