

V&V Reference Report

L2 ASCDS Version : 7.6.8.1

Observation 61346 - L2 Version 001
Chandra X-Ray Center

L2 Processing Date : Aug 28 2006

Contents

1	Front	2
2	OBI	3
2.1	OBI	3
2.1.1	Images	3
2.1.2	Bias	3
2.1.3	Parameters	4
2.1.4	Events	4
2.2	Compared Parameters	5
2.3	Aspect	6
2.4	Star Slots	8
2.5	FID Slots	8
A	Summary	9
A.1	Status	9
A.2	Comments	9

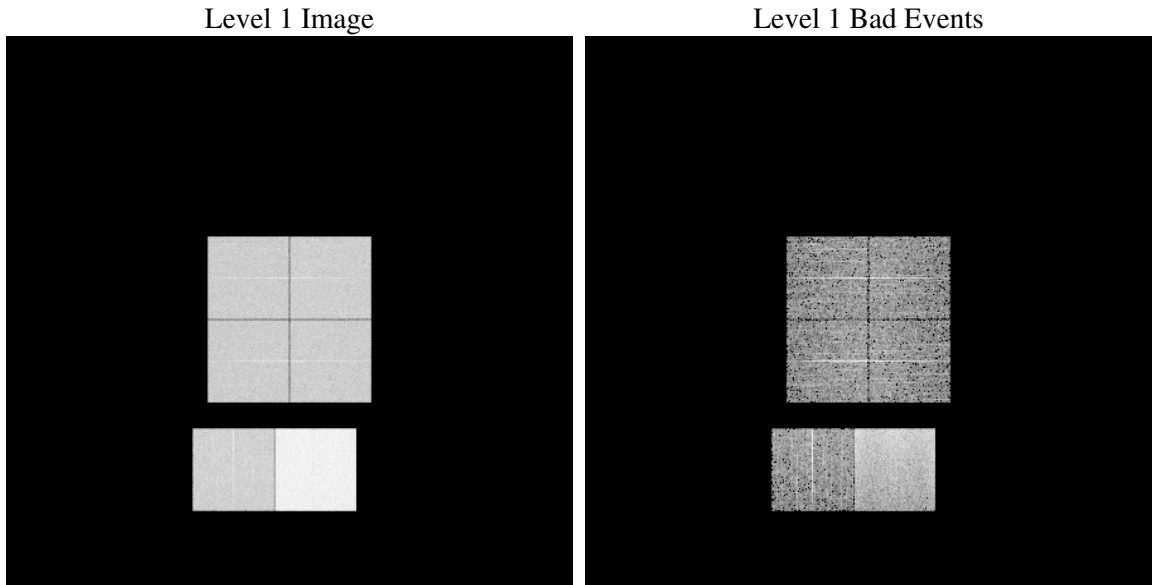
1 Front

seq_num	
obs_id	61346
title	ACIS-012367 diagnostics
observer	CHANDRA engineering request/realtime commanding
object	
dtcycle	0
cycle	P
ra_targ	0.0
dec_targ	0.0
ra_nom	177.99701067907
dec_nom	-5.9715327196062
roll_nom	63.258808744707
revision	2
ontime	7621.835547179
livetime	7525.3232761622
ontime0	2964.5516370237
ontime1	3097.4744396359
ontime2	2888.232101649
ontime3	2935.300137341
ontime6	3207.7511817962
ontime7	7621.835547179
l2events	1203582

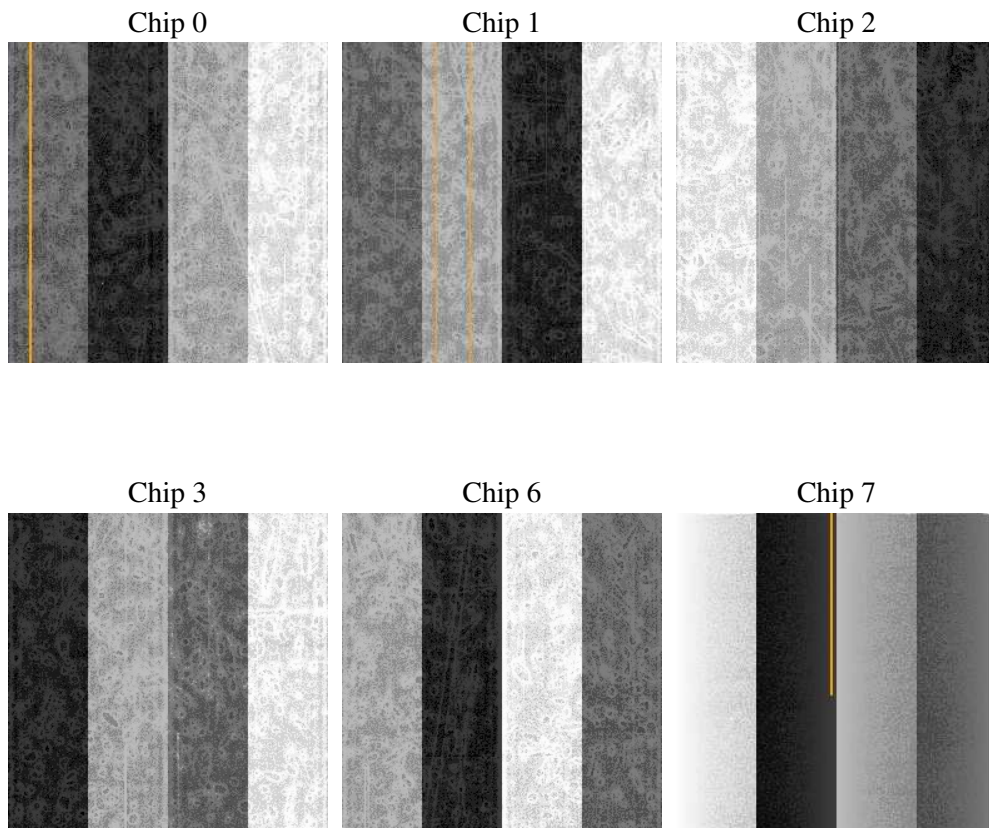
2 OBI

2.1 OBI

2.1.1 Images



2.1.2 Bias



2.1.3 Parameters

obi_num	0
ascdsver	7.6.8.1
caldsver	3.2.3
date	2006-08-28T08:02:20
revision	2

sched_exp_time	0.0
ontime	7626.0723567158
ontime0	2965.5474065542
ontime1	3098.429169178
ontime2	2891.0040948242
ontime3	2936.3779868782
ontime6	3208.6238313317
ontime7	7626.0723567158
l1events	1416529

2.1.4 Events

	ccd 0	ccd 1	ccd 2	ccd 3	ccd 6	ccd 7
level 1 events	182083	189330	181212	183706	207819	472379
rejected events	20898	20438	22024	21140	23324	54333
rejected %	11%	10%	12%	11%	11%	11%

	ccd 0	ccd 1	ccd 2	ccd 3	ccd 6	ccd 7
grade 0 events	88688	93004	88442	90785	100398	77889
	48%	49%	48%	49%	48%	16%
grade 1 events	471	495	432	472	455	181
	0%	0%	0%	0%	0%	0%
grade 2 events	28689	30130	27955	28717	32134	125412
	15%	15%	15%	15%	15%	26%
grade 3 events	10055	10565	10046	10321	11478	31764
	5%	5%	5%	5%	5%	6%
grade 4 events	10129	10592	10245	10246	11374	31465
	5%	5%	5%	5%	5%	6%
grade 5 events	1457	1531	1398	1446	1764	7531
	0%	0%	0%	0%	0%	1%
grade 6 events	23799	24601	22682	22497	29111	151689
	13%	12%	12%	12%	14%	32%
grade 7 events	18795	18412	20012	19222	21105	46448
	10%	9%	11%	10%	10%	9%

2.2 Compared Parameters

Parameter	Planned	Actual	Parameter	Planned	Actual
Instrument	ACIS	ACIS	Obspar format version number	6	6
Detector	ACIS-012367	ACIS-012367	Obspar file type	PREDICTED	ACTUAL
Grating	NONE	NONE	Obspar update status	NONE	UPDATED
Data mode	FAINT	FAINT	On-chip summing requested	N	N
Observation mode	SECONDARY	SECONDARY	Subarray requested	NONE	NONE
Pointing RA	0	177.9970106790683	Alternating exposures requested	N	N
Pointing Dec	0	-5.971532719606235	Primary exposure time	0.000000	3.2
Pointing Roll	0.0	63.2588087447073			
SIM focus pos (mm)	-0.782348	-0.6828225247311905			
SIM defocus (mm)	0	0.8505141146731063			
SIM translation stage pos (mm)	-233.592463	250.466033080201			
SIM translation stage offset (mm)	0	-0.01005468664627074			
Observation start time	127704936.252	127704935.48362			
Observation start date	2002-01-18T01:35:36	2002-01-18T01:35:35			
Observation end time	127734886.753	127734885.98483			
Observation end date	2002-01-18T09:54:47	2002-01-18T09:54:45			
Read mode	TIMED	TIMED			

2.3 Aspect

2.4 Star Slots

2.5 FID Slots

A Summary

A.1 Status

V&V Scientist	Jen Lauer
V&V Date (YYYY-MM-DD)	2006.08.28
V&V Edition	1
V&V Disposition and Status	OK
V&V Charge Time	7.62183554

A.2 Comments

The ACIS focal plane temperature was above calibration limits for the entire observation.