

V&V Reference Report

L2 ASCDS Version : 8.4.5

Observation 61256 - L2 Version 3
Chandra X-Ray Center

L2 Processing Date : Oct 4 2012

Contents

1	Front	2
2	OBI	3
2.1	OBI	3
2.1.1	Images	3
2.1.2	Bias	3
2.1.3	Parameters	4
2.1.4	Events	4
2.2	Compared Parameters	5
2.3	Star Slots	6
2.4	FID Slots	6
A	Summary	7
A.1	Status	7
A.2	Comments	7

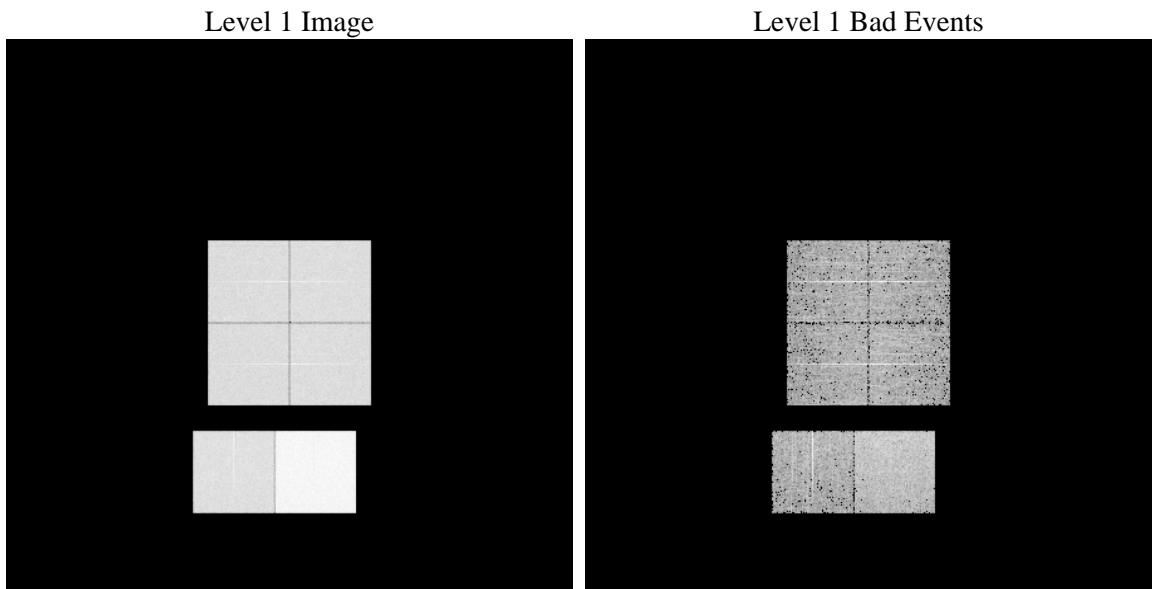
1 Front

seq_num	 	Sequence number
obs_id	61256	Observation id
title	ACIS-012367 diagnostics	Proposal title
observer	CHANDRA engineering request/realtime commanding	Principal investig
object	 	Source name
dtcycle	0	
cycle	P	events from which exps? Prim/Second/Both
ra_targ	0.0	Observer's specified target RA [deg]
dec_targ	0.0	Observer's specified target Dec [deg]
ra_nom	181.97771339199	Nominal RA [deg]
dec_nom	12.981336205987	Nominal Dec [deg]
roll_nom	187.72669265257	Nominal Roll [deg]
revision	3	Processing version of data
ontime	7795.2000072449	Sum of GTIs [s]
livetime	7696.4924910473	Livetime [s]
ontime0	3238.3767235279	Sum of GTIs [s]
ontime1	3312.9205539525	Sum of GTIs [s]
ontime2	3124.9410908967	Sum of GTIs [s]
ontime3	3184.4963687807	Sum of GTIs [s]
ontime6	3429.5967683941	Sum of GTIs [s]
ontime7	7795.2000072449	Sum of GTIs [s]
l2events	1239829	Number of level 2 events

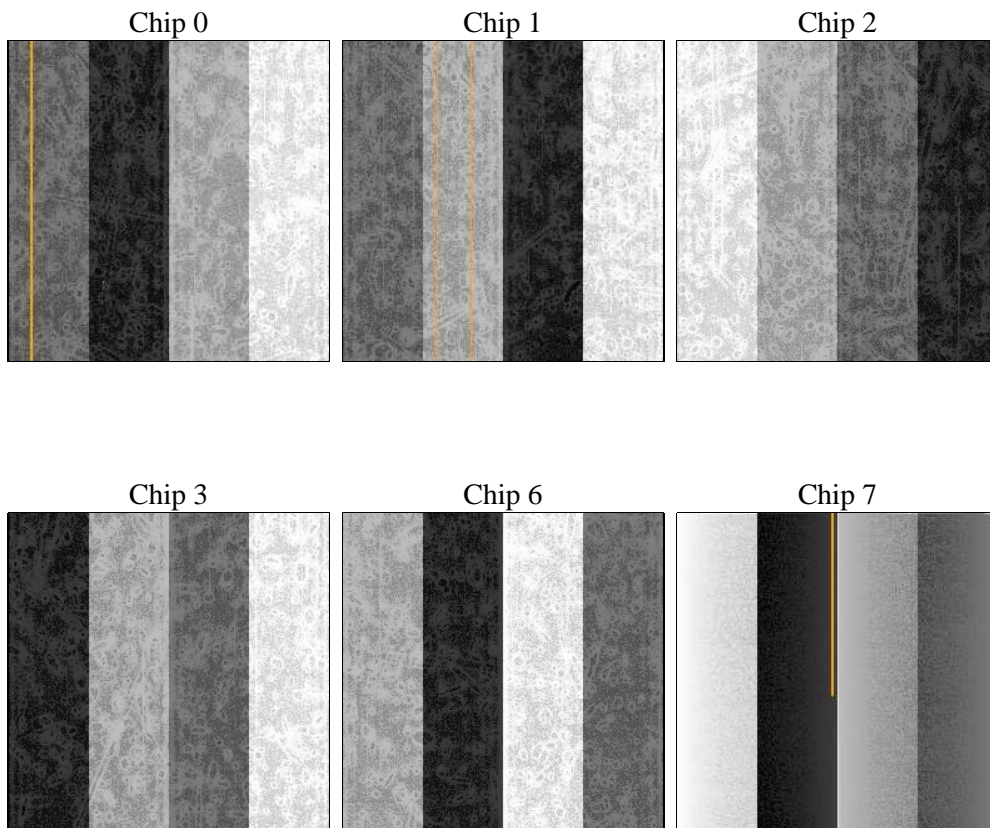
2 OBI

2.1 OBI

2.1.1 Images



2.1.2 Bias



2.1.3 Parameters

obi_num	1	Obi number	sched_exp_time	0.0	[s] Scheduled observation exposure time
ascdsver	8.4.5	Processing system revision	ontime	7795.2000072449	Sum of GTIs [s]
caldsver	4.5.2	 	ontime0	3238.3767235279	Sum of GTIs [s]
date	2012-10-04T11:47:16	Date and time of file creation	ontime1	3312.9205539525	Sum of GTIs [s]
revision	3	Processing version of data	ontime2	3124.9410908967	Sum of GTIs [s]
			ontime3	3184.4963687807	Sum of GTIs [s]
			ontime6	3429.5967683941	Sum of GTIs [s]
			ontime7	7795.2000072449	Sum of GTIs [s]
			l1events	1442262	Number of level 1 events

2.1.4 Events

	ccd 0	ccd 1	ccd 2	ccd 3	ccd 6	ccd 7		ccd 0	ccd 1	ccd 2	ccd 3	ccd 6	ccd 7
level 1 events	191224	195939	187079	192468	212936	462616	grade 0 events	92960	96407	92493	95041	102984	107848
rejected events	21462	21394	21187	23044	23580	38781		48%	49%	49%	49%	48%	23%
rejected %	11%	10%	11%	11%	11%	8%	grade 1 events	433	432	435	509	464	288
								0%	0%	0%	0%	0%	0%
							grade 2 events	30214	30581	29214	29439	32891	93207
								15%	15%	15%	15%	15%	20%
							grade 3 events	10801	11105	10447	10622	11539	42409
								5%	5%	5%	5%	5%	9%
							grade 4 events	10680	10992	10424	10798	11746	42259
								5%	5%	5%	5%	5%	9%
							grade 5 events	1534	1570	1474	1691	1788	7861
								0%	0%	0%	0%	0%	1%
							grade 6 events	25107	25460	23314	23524	30196	138112
								13%	12%	12%	12%	14%	29%
							grade 7 events	19495	19392	19278	20844	21328	30632
								10%	9%	10%	10%	10%	6%

2.2 Compared Parameters

Parameter	Planned	Actual	Parameter	Planned	Actual
Instrument	ACIS	ACIS	Obspar format version number	7	7
Detector	ACIS-012367	ACIS-012367	Obspar file type	PREDICTED	ACTUAL
Grating	NONE	NONE	Obspar update status	NONE	UPDATED
Data mode	FAINT	FAINT	On-chip summing requested	N	N
Observation mode	SECONDARY	SECONDARY	Subarray requested	NONE	NONE
[deg] Pointing RA	0	181.9777133919948	Alternating exposures requested	N	N
[deg] Pointing Dec	0	12.98133620598656	[s] Primary exposure time	3.2	3.2
[deg] Pointing Roll	0.0	187.7266926525696			
[mm] SIM focus pos	-0.782348	-0.7809083437167272			
[mm] SIM defocus	0	0.7524282956875696			
[mm] SIM translation stage pos	-233.592463	250.466033080201			
[mm] SIM translation stage offset	0	-0.01005468664627074			
[s] Observation start time (MET)	133413985.582716	133413984.81423			
Observation start date	2002-03-25T03:26:26	2002-03-25T03:26:24			
[s] Observation end time (MET)	133425244.183173	133425243.41468			
Observation end date	2002-03-25T06:34:04	2002-03-25T06:34:03			
Read mode	TIMED	TIMED			

2.3 Star Slots

2.4 FID Slots

A Summary

A.1 Status

V&V Scientist	Beth Sundheim
V&V Date (YYYY-MM-DD)	2012.10.05
V&V Edition	1
V&V Disposition and Status	OK
V&V Charge Time	7.7952000072449

A.2 Comments