

# V&V Reference Report

## L2 ASCDS Version : 8.4.5

Observation 61246 - L2 Version 3  
Chandra X-Ray Center

L2 Processing Date : Oct 4 2012

## Contents

<b>1</b>	<b>Front</b>	<b>2</b>
<b>2</b>	<b>OBI</b>	<b>3</b>
2.1	OBI . . . . .	3
2.1.1	Images . . . . .	3
2.1.2	Bias . . . . .	3
2.1.3	Parameters . . . . .	4
2.1.4	Events . . . . .	4
2.2	Compared Parameters . . . . .	5
2.3	Star Slots . . . . .	6
2.4	FID Slots . . . . .	6
<b>A</b>	<b>Summary</b>	<b>7</b>
A.1	Status . . . . .	7
A.2	Comments . . . . .	7

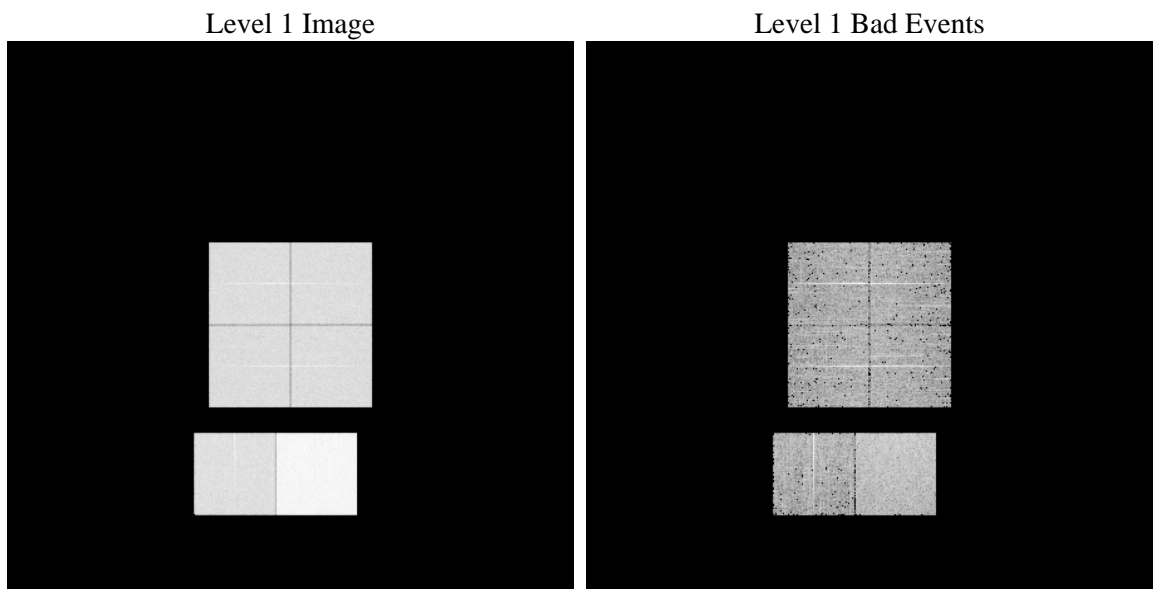
# 1 Front

seq_num	&#160	Sequence number
obs_id	61246	Observation id
title	ACIS-012367 diagnostics	Proposal title
observer	CHANDRA engineering request/realtime commanding	Principal investig
object	&#160	Source name
dtcycle	0	&#160
cycle	P	events from which exps? Prim/Second/Both
ra_targ	0.0	Observer's specified target RA [deg]
dec_targ	0.0	Observer's specified target Dec [deg]
ra_nom	267.4981052556	Nominal RA [deg]
dec_nom	-46.6456506651	Nominal Dec [deg]
roll_nom	82.381517661901	Nominal Roll [deg]
revision	3	Processing version of data
ontime	8463.465225026	Sum of GTIs [s]
livetime	8356.2957322598	Livetime [s]
ontime0	3584.5828856677	Sum of GTIs [s]
ontime1	3568.3784330934	Sum of GTIs [s]
ontime2	3407.4197491705	Sum of GTIs [s]
ontime3	3474.3886323869	Sum of GTIs [s]
ontime6	3698.018857047	Sum of GTIs [s]
ontime7	8463.465225026	Sum of GTIs [s]
l2events	1331872	Number of level 2 events

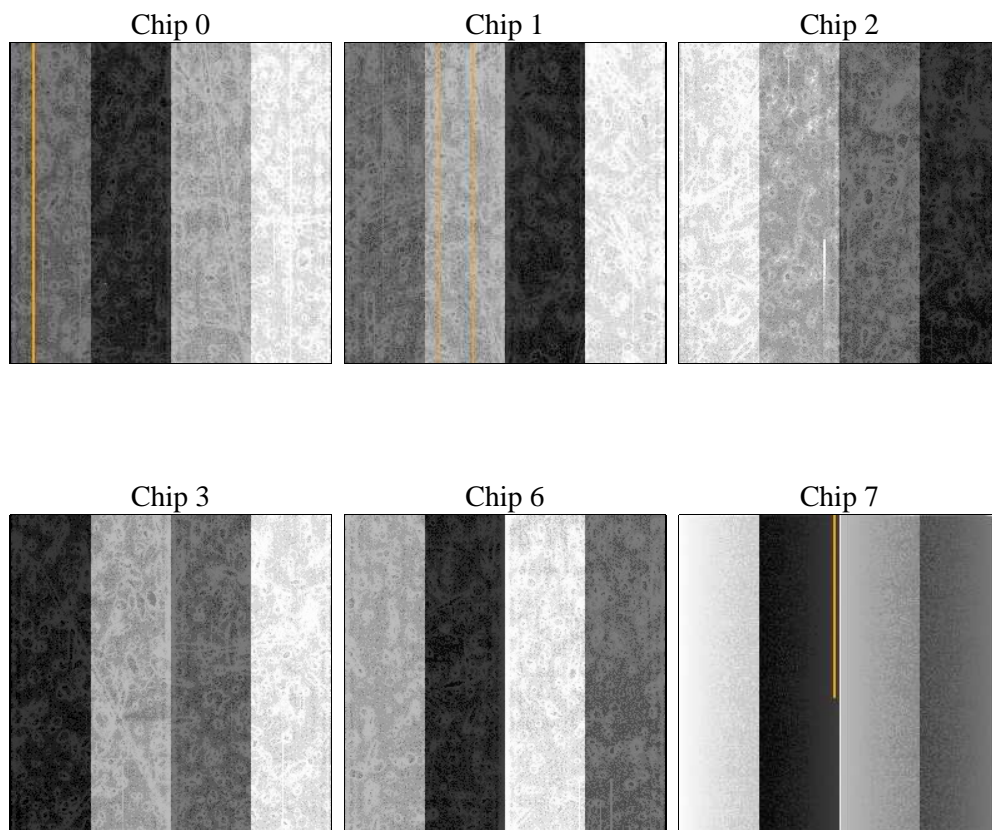
## 2 OBI

### 2.1 OBI

#### 2.1.1 Images



#### 2.1.2 Bias



### 2.1.3 Parameters

obi_num	0	Obi number	sched_exp_time	0.0	[s] Scheduled observation exposure time
ascdsver	8.4.5	Processing system revision	ontime	8463.465225026	Sum of GTIs [s]
caldsver	4.5.2	&#160	ontime0	3584.5828856677	Sum of GTIs [s]
date	2012-10-04T21:15:18	Date and time of file creation	ontime1	3568.3784330934	Sum of GTIs [s]
revision	3	Processing version of data	ontime2	3407.4197491705	Sum of GTIs [s]
			ontime3	3474.3886323869	Sum of GTIs [s]
			ontime6	3698.018857047	Sum of GTIs [s]
			ontime7	8463.465225026	Sum of GTIs [s]
			l1events	1562299	Number of level 1 events

### 2.1.4 Events

	ccd 0	ccd 1	ccd 2	ccd 3	ccd 6	ccd 7		ccd 0	ccd 1	ccd 2	ccd 3	ccd 6	ccd 7
level 1 events	210355	209924	203894	207248	228610	502268	grade 0 events	102273	101733	98718	101527	108856	114663
rejected events	24892	24767	25675	25703	27455	44915		48%	48%	48%	48%	47%	22%
rejected %	11%	11%	12%	12%	12%	8%	grade 1 events	514	512	531	534	514	335
								0%	0%	0%	0%	0%	0%
							grade 2 events	32731	32692	31598	31633	34927	101322
								15%	15%	15%	15%	15%	20%
							grade 3 events	11876	11969	11439	11459	12547	46338
								5%	5%	5%	5%	5%	9%
							grade 4 events	11682	11714	11253	11452	12487	45857
								5%	5%	5%	5%	5%	9%
							grade 5 events	1833	1889	1693	1840	2094	9009
								0%	0%	0%	0%	0%	1%
							grade 6 events	26901	27049	25375	25474	32338	149343
								12%	12%	12%	12%	14%	29%
							grade 7 events	22545	22366	23287	23329	24847	35401
								10%	10%	11%	11%	10%	7%

## 2.2 Compared Parameters

Parameter	Planned	Actual	Parameter	Planned	Actual
Instrument	ACIS	ACIS	Obspar format version number	7	7
Detector	ACIS-012367	ACIS-012367	Obspar file type	PREDICTED	ACTUAL
Grating	NONE	NONE	Obspar update status	NONE	UPDATED
Data mode	FAINT	FAINT	On-chip summing requested	N	N
Observation mode	SECONDARY	SECONDARY	Subarray requested	NONE	NONE
[deg] Pointing RA	0	267.4981052556035	Alternating exposures requested	N	N
[deg] Pointing Dec	0	-46.64565066509992	[s] Primary exposure time	0.000000	3.2
[deg] Pointing Roll	0.0	82.38151766190087			
[mm] SIM focus pos	-0.782348	-0.7809083437167272			
[mm] SIM defocus	0	0.7524282956875696			
[mm] SIM translation stage pos	-233.592463	250.466033080201			
[mm] SIM translation stage offset	0	-0.01005468664627074			
[s] Observation start time (MET)	134135907.462	134135906.6935			
Observation start date	2002-04-02T11:58:27	2002-04-02T11:58:26			
[s] Observation end time (MET)	134235244.316	134235243.54753			
Observation end date	2002-04-03T15:34:04	2002-04-03T15:34:03			
Read mode	TIMED	TIMED			

## 2.3 Star Slots

## 2.4 FID Slots

## A Summary

### A.1 Status

V&V Scientist	Beth Sundheim
V&V Date (YYYY-MM-DD)	2012.10.09
V&V Edition	1
V&V Disposition and Status	OK
V&V Charge Time	8.463465225026

### A.2 Comments