

V&V Reference Report

L2 ASCDS Version : 7.6.9

Observation 61116 - L2 Version 001
Chandra X-Ray Center

L2 Processing Date : Sep 23 2006

Contents

1	Front	2
2	OBI	3
2.1	OBI	3
2.1.1	Images	3
2.1.2	Bias	3
2.1.3	Parameters	4
2.1.4	Events	4
2.2	Compared Parameters	5
2.3	Aspect	6
2.4	Star Slots	8
2.5	FID Slots	8
A	Summary	9
A.1	Status	9
A.2	Comments	9

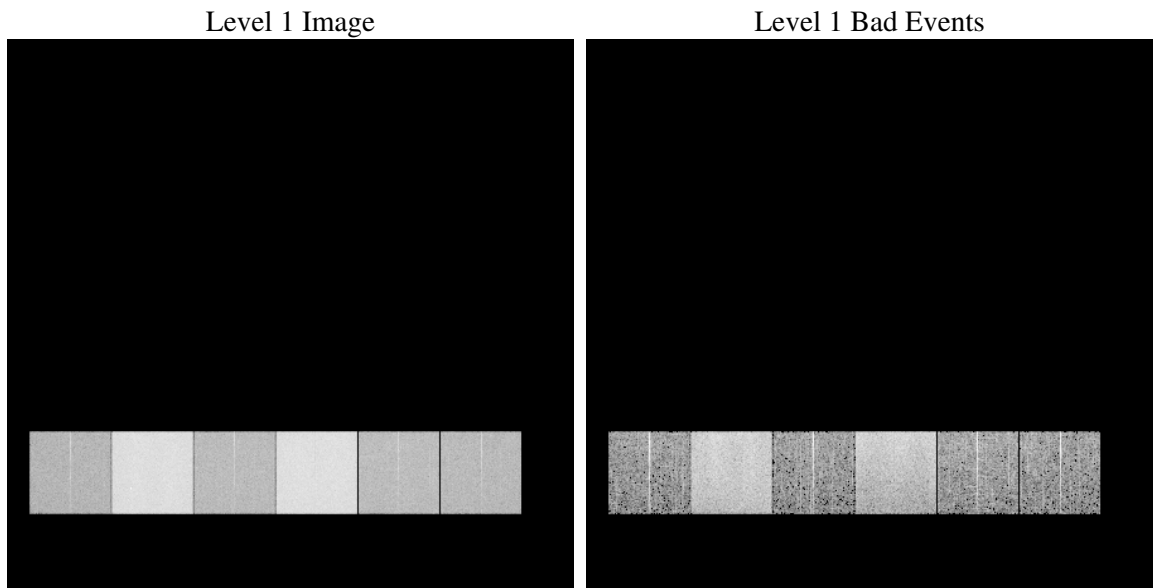
1 Front

seq_num	
obs_id	61116
title	ACIS-456789 diagnostics
observer	CHANDRA engineering request/realtime commanding
object	
dtcycle	0
cycle	P
ra_targ	0.0
dec_targ	0.0
ra_nom	0.97704840838256
dec_nom	-7.9826411039779
roll_nom	109.82506504533
revision	2
ontime	7908.5033176839
livetime	7808.3610867464
ontime4	2700.3603993952
ontime5	8453.0260638595
ontime6	2972.5663000941
ontime7	7908.5033176839
ontime8	3021.2635416389
ontime9	2927.0687996149
l2events	1268490

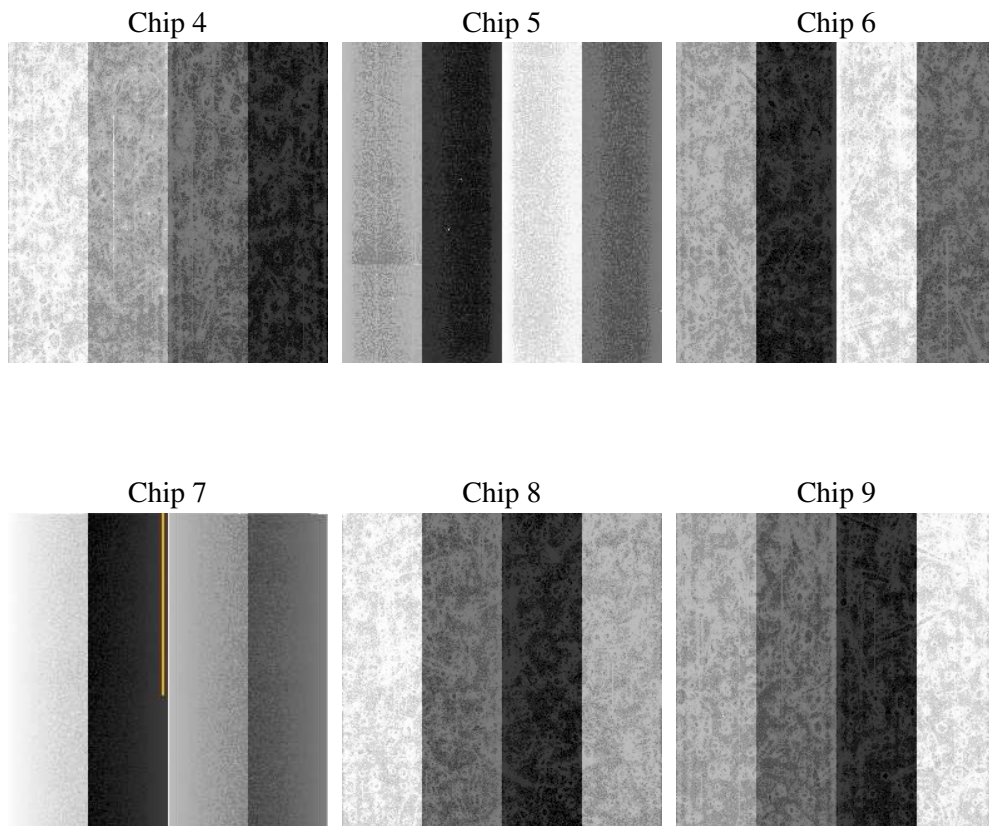
2 OBI

2.1 OBI

2.1.1 Images



2.1.2 Bias



2.1.3 Parameters

obi_num	0
ascdsver	7.6.9
caldsver	3.2.3
date	2006-09-23T04:06:20
revision	2

sched_exp_time	0.0
ontime	7911.2906410992
ontime4	2703.0246028006
ontime5	8455.7723472714
ontime6	2975.2715435028
ontime7	7911.2906410992
ontime8	3023.8867050707
ontime9	2929.8971630335
l1events	1558888

2.1.4 Events

	ccd 4	ccd 5	ccd 6	ccd 7	ccd 8	ccd 9
level 1 events	150389	435808	175221	447949	182794	166727
rejected events	24531	74965	24483	61444	27671	24504
rejected %	16%	17%	13%	13%	15%	14%

	ccd 4	ccd 5	ccd 6	ccd 7	ccd 8	ccd 9
grade 0 events	69522	35679	81725	67521	84969	77856
	46%	8%	46%	15%	46%	46%
grade 1 events	374	100	414	165	430	432
	0%	0%	0%	0%	0%	0%
grade 2 events	24062	175374	26502	118687	27650	25540
	15%	40%	15%	26%	15%	15%
grade 3 events	7380	10856	9206	27710	9865	8647
	4%	2%	5%	6%	5%	5%
grade 4 events	7468	10401	9227	27191	9667	8621
	4%	2%	5%	6%	5%	5%
grade 5 events	1489	7644	1744	7814	1864	1727
	0%	1%	0%	1%	1%	1%
grade 6 events	17566	128672	24250	145541	23158	21723
	11%	29%	13%	32%	12%	13%
grade 7 events	22528	67082	22153	53320	25191	22181
	14%	15%	12%	11%	13%	13%

2.2 Compared Parameters

Parameter	Planned	Actual	Parameter	Planned	Actual
Instrument	ACIS	ACIS	Obspar format version number	6	6
Detector	ACIS-456789	ACIS-456789	Obspar file type	PREDICTED	ACTUAL
Grating	NONE	NONE	Obspar update status	NONE	UPDATED
Data mode	FAINT	FAINT	On-chip summing requested	N	N
Observation mode	SECONDARY	SECONDARY	Subarray requested	NONE	NONE
Pointing RA	0	0.9770484083825567	Alternating exposures requested	N	N
Pointing Dec	0	-7.982641103977853	Primary exposure time	0.000000	3.2
Pointing Roll	0.0	109.8250650453253			
SIM focus pos (mm)	-0.684267	-0.7809083437167272			
SIM defocus (mm)	0	0.7524282956875696			
SIM translation stage pos (mm)	-190.132523	250.4635187648994			
SIM translation stage offset (mm)	0	-0.007540371344731511			
Observation start time	143279260.692	143279259.66686			
Observation start date	2002-07-17T07:47:41	2002-07-17T07:47:39			
Observation end time	143296607.792	143296606.76757			
Observation end date	2002-07-17T12:36:48	2002-07-17T12:36:46			
Read mode	TIMED	TIMED			

2.3 Aspect

2.4 Star Slots

2.5 FID Slots

A Summary

A.1 Status

V&V Scientist	Beth Sundheim
V&V Date (YYYY-MM-DD)	2006.09.24
V&V Edition	1
V&V Disposition and Status	OK
V&V Charge Time	7.90850331

A.2 Comments

Focal plane temperature is warmer than -118 degrees during most of observation. The ACIS calibrations are not verified or necessarily applicable for focal plane temperatures warmer than -118 degrees.