

V&V Reference Report

L2 ASCDS Version : 8.4.5

Observation 61036 - L2 Version 3
Chandra X-Ray Center

L2 Processing Date : Oct 14 2012

Contents

1	Front	2
2	OBI	3
2.1	OBI	3
2.1.1	Images	3
2.1.2	Bias	3
2.1.3	Parameters	4
2.1.4	Events	4
2.2	Compared Parameters	5
2.3	Star Slots	6
2.4	FID Slots	6
A	Summary	7
A.1	Status	7
A.2	Comments	7

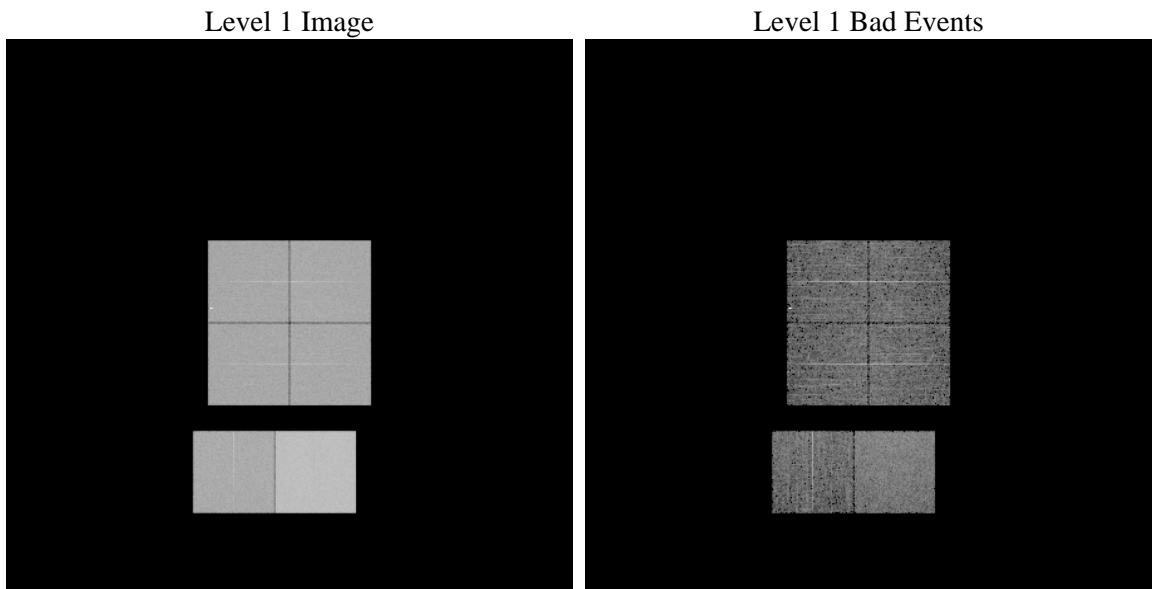
1 Front

seq_num	 	Sequence number
obs_id	61036	Observation id
title	ACIS-012367 diagnostics	Proposal title
observer	CHANDRA engineering request/realtime commanding	Principal investig
object	 	Source name
dtcycle	0	
cycle	P	events from which exps? Prim/Second/Both
ra_targ	0.0	Observer's specified target RA [deg]
dec_targ	0.0	Observer's specified target Dec [deg]
ra_nom	282.08413842874	Nominal RA [deg]
dec_nom	-2.4448423366528	Nominal Dec [deg]
roll_nom	266.76316530793	Nominal Roll [deg]
revision	3	Processing version of data
ontime	7795.1999709606	Sum of GTIs [s]
livetime	7696.4924552224	Livetime [s]
ontime0	3565.7278892398	Sum of GTIs [s]
ontime1	3831.4901599288	Sum of GTIs [s]
ontime2	3571.5716356039	Sum of GTIs [s]
ontime3	3601.3785223067	Sum of GTIs [s]
ontime6	3905.4349822402	Sum of GTIs [s]
ontime7	7795.1999709606	Sum of GTIs [s]
l2events	1214564	Number of level 2 events

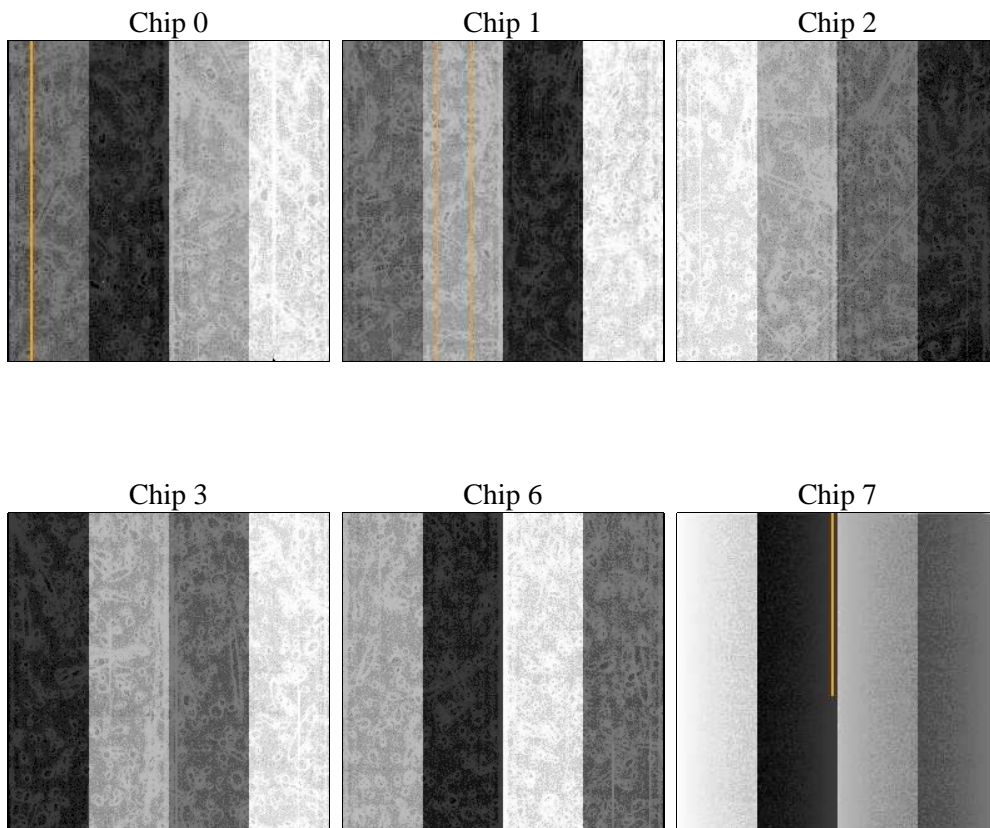
2 OBI

2.1 OBI

2.1.1 Images



2.1.2 Bias



2.1.3 Parameters

obi_num	1	Obi number	sched_exp_time	0.0	[s] Scheduled observation exposure time
ascdsver	8.4.5	Processing system revision	ontime	7795.1999709606	Sum of GTIs [s]
caldsver	4.5.2	 	ontime0	3565.7278892398	Sum of GTIs [s]
date	2012-10-14T20:37:10	Date and time of file creation	ontime1	3831.4901599288	Sum of GTIs [s]
revision	3	Processing version of data	ontime2	3571.5716356039	Sum of GTIs [s]
			ontime3	3601.3785223067	Sum of GTIs [s]
			ontime6	3905.4349822402	Sum of GTIs [s]
			ontime7	7795.1999709606	Sum of GTIs [s]
			l1events	1435302	Number of level 1 events

2.1.4 Events

	ccd 0	ccd 1	ccd 2	ccd 3	ccd 6	ccd 7		ccd 0	ccd 1	ccd 2	ccd 3	ccd 6	ccd 7
level 1 events	193602	204550	195062	197660	219717	424711	grade 0 events	92480	98788	95544	96787	105423	96887
rejected events	26341	24524	24548	25616	26492	40274		47%	48%	48%	48%	47%	22%
rejected %	13%	11%	12%	12%	12%	9%	grade 1 events	537	456	559	557	551	254
								0%	0%	0%	0%	0%	0%
							grade 2 events	29068	31872	28915	29349	33100	85189
								15%	15%	14%	14%	15%	20%
							grade 3 events	10911	11571	11112	11131	11851	38861
								5%	5%	5%	5%	5%	9%
							grade 4 events	10543	11311	10838	11249	11844	38348
								5%	5%	5%	5%	5%	9%
							grade 5 events	1668	1755	1605	1765	1935	7834
								0%	0%	0%	0%	0%	1%
							grade 6 events	24402	26640	24105	23677	31007	125322
								12%	13%	12%	11%	14%	29%
							grade 7 events	23993	22157	22384	23145	24006	32016
								12%	10%	11%	11%	10%	7%

2.2 Compared Parameters

Parameter	Planned	Actual	Parameter	Planned	Actual
Instrument	ACIS	ACIS	Obspar format version number	7	7
Detector	ACIS-012367	ACIS-012367	Obspar file type	PREDICTED	ACTUAL
Grating	NONE	NONE	Obspar update status	NONE	UPDATED
Data mode	FAINT	FAINT	On-chip summing requested	N	N
Observation mode	SECONDARY	SECONDARY	Subarray requested	NONE	NONE
[deg] Pointing RA	0	282.084138428737	Alternating exposures requested	N	N
[deg] Pointing Dec	0	-2.444842336652775	[s] Primary exposure time	3.2	3.2
[deg] Pointing Roll	0.0	266.7631653079335			
[mm] SIM focus pos	-0.782348	-0.6828225247311905			
[mm] SIM defocus	0	0.8505141146731063			
[mm] SIM translation stage pos	-233.592463	250.466033080201			
[mm] SIM translation stage offset	0	-0.01005468664627074			
[s] Observation start time (MET)	148261607.546844	148261606.52212			
Observation start date	2002-09-12T23:46:48	2002-09-12T23:46:46			
[s] Observation end time (MET)	148271217.947241	148271216.92252			
Observation end date	2002-09-13T02:26:58	2002-09-13T02:26:56			
Read mode	TIMED	TIMED			

2.3 Star Slots

2.4 FID Slots

A Summary

A.1 Status

V&V Scientist	Beth Sundheim
V&V Date (YYYY-MM-DD)	2012.10.24
V&V Edition	1
V&V Disposition and Status	OK
V&V Charge Time	7.7951999709606

A.2 Comments