

V&V Reference Report

L2 ASCDS Version : 8.4.5

Observation 61026 - L2 Version 3
Chandra X-Ray Center

L2 Processing Date : Oct 14 2012

Contents

1	Front	2
2	OBI	3
2.1	OBI	3
2.1.1	Images	3
2.1.2	Bias	3
2.1.3	Parameters	4
2.1.4	Events	4
2.2	Compared Parameters	5
2.3	Star Slots	6
2.4	FID Slots	6
A	Summary	7
A.1	Status	7
A.2	Comments	7

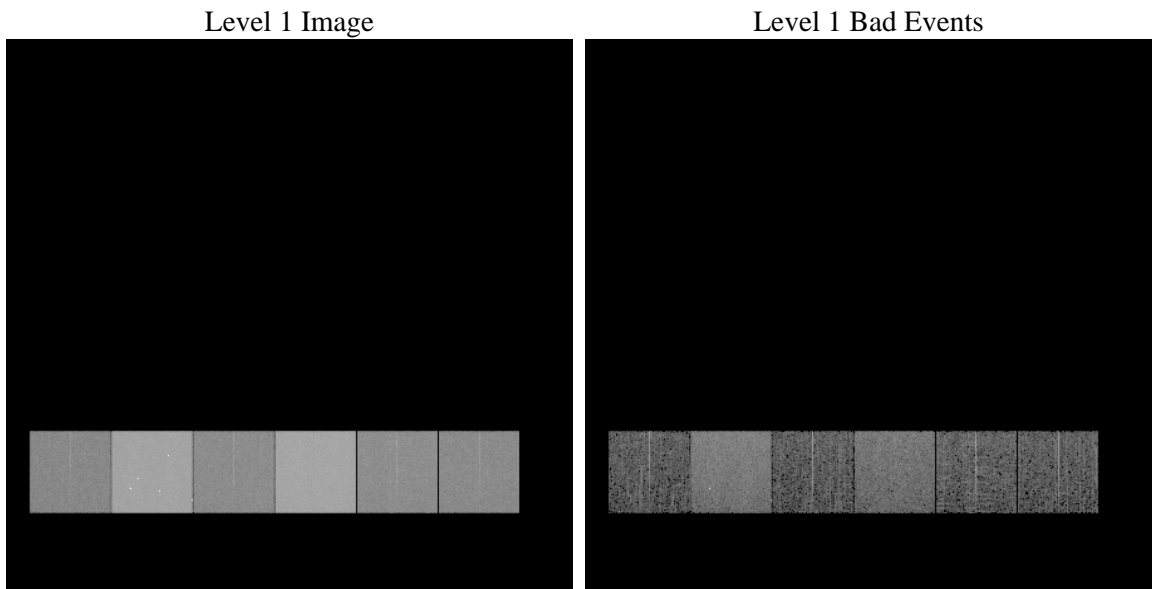
1 Front

seq_num	 	Sequence number
obs_id	61026	Observation id
title	ACIS-456789 diagnostics	Proposal title
observer	CHANDRA engineering request/realtime commanding	Principal investig
object	 	Source name
dtcycle	0	
cycle	P	events from which exps? Prim/Second/Both
ra_targ	0.0	Observer's specified target RA [deg]
dec_targ	0.0	Observer's specified target Dec [deg]
ra_nom	348.10019113657	Nominal RA [deg]
dec_nom	5.4713869266807	Nominal Dec [deg]
roll_nom	237.53641358794	Nominal Roll [deg]
revision	3	Processing version of data
ontime	8168.8533345759	Sum of GTIs [s]
livetime	8065.4143949605	Livetime [s]
ontime4	2903.9686039686	Sum of GTIs [s]
ontime5	8460.4987700582	Sum of GTIs [s]
ontime6	3179.4559668005	Sum of GTIs [s]
ontime7	8168.8533345759	Sum of GTIs [s]
ontime8	3250.7590062022	Sum of GTIs [s]
ontime9	3082.2252056003	Sum of GTIs [s]
l2events	1296171	Number of level 2 events

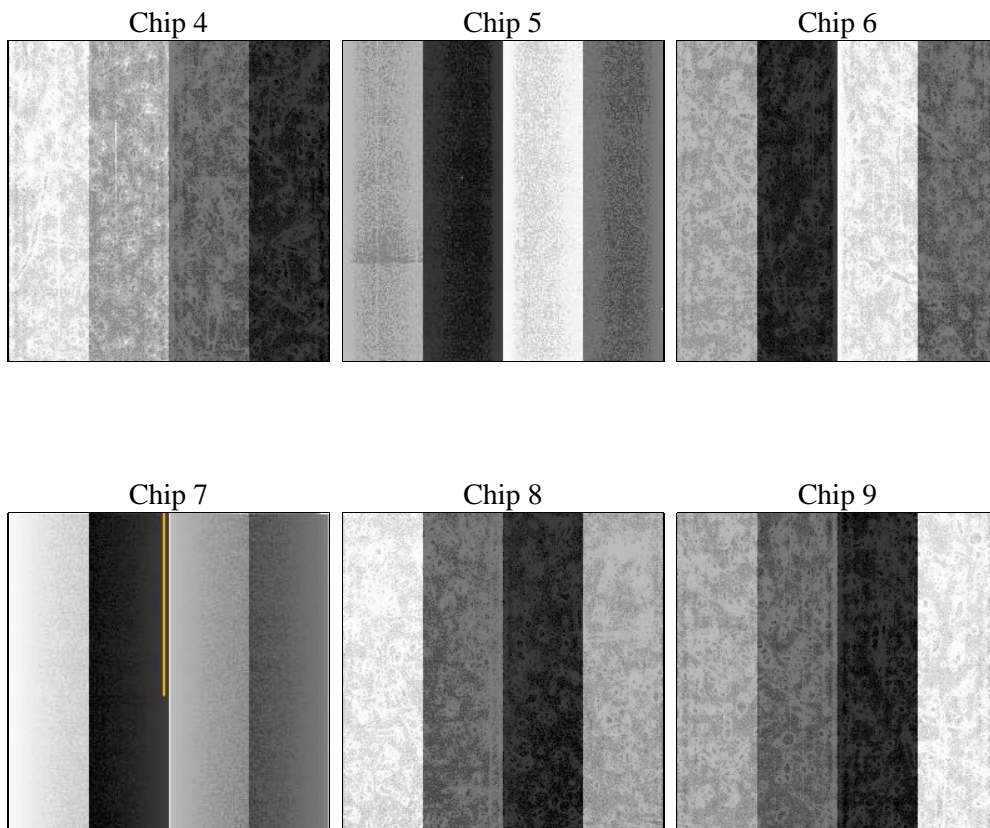
2 OBI

2.1 OBI

2.1.1 Images



2.1.2 Bias



2.1.3 Parameters

obi_num	0	Obi number	sched_exp_time	0.0	[s] Scheduled observation exposure time
ascdsver	8.4.5	Processing system revision	ontime	8168.8533345759	Sum of GTIs [s]
caldsver	4.5.2	 	ontime4	2903.9686039686	Sum of GTIs [s]
date	2012-10-14T23:59:34	Date and time of file creation	ontime5	8460.4987700582	Sum of GTIs [s]
revision	3	Processing version of data	ontime6	3179.4559668005	Sum of GTIs [s]
			ontime7	8168.8533345759	Sum of GTIs [s]
			ontime8	3250.7590062022	Sum of GTIs [s]
			ontime9	3082.2252056003	Sum of GTIs [s]
			l1events	1555805	Number of level 1 events

2.1.4 Events

	ccd 4	ccd 5	ccd 6	ccd 7	ccd 8	ccd 9		ccd 4	ccd 5	ccd 6	ccd 7	ccd 8	ccd 9
level 1 events	154440	425690	178592	441244	186603	169236	grade 0 events	76505	86308	84981	100602	89004	80780
rejected events	22643	59855	22981	42890	25848	23237		49%	20%	47%	22%	47%	47%
rejected %	14%	14%	12%	9%	13%	13%	grade 1 events	568	408	408	263	449	470
								0%	0%	0%	0%	0%	0%
							grade 2 events	21090	132793	26693	87863	27657	25052
								13%	31%	14%	19%	14%	14%
							grade 3 events	8722	22000	9637	40122	10315	9099
								5%	5%	5%	9%	5%	5%
							grade 4 events	8521	21688	9632	40180	10323	9384
								5%	5%	5%	9%	5%	5%
							grade 5 events	1399	11174	1625	8308	1884	1658
								0%	2%	0%	1%	1%	0%
							grade 6 events	16959	103171	24668	129746	23456	21684
								10%	24%	13%	29%	12%	12%
							grade 7 events	20676	48148	20948	34160	23515	21109
								13%	11%	11%	7%	12%	12%

2.2 Compared Parameters

Parameter	Planned	Actual	Parameter	Planned	Actual
Instrument	ACIS	ACIS	Obspar format version number	7	7
Detector	ACIS-456789	ACIS-456789	Obspar file type	PREDICTED	ACTUAL
Grating	NONE	NONE	Obspar update status	NONE	UPDATED
Data mode	FAINT	FAINT	On-chip summing requested	N	N
Observation mode	SECONDARY	SECONDARY	Subarray requested	NONE	NONE
[deg] Pointing RA	0	348.1001911365664	Alternating exposures requested	N	N
[deg] Pointing Dec	0	5.471386926680737	[s] Primary exposure time	0.000000	3.2
[deg] Pointing Roll	0.0	237.5364135879387			
[mm] SIM focus pos	-0.684267	-0.7809083437167272			
[mm] SIM defocus	0	0.7524282956875696			
[mm] SIM translation stage pos	-190.132523	250.466033080201			
[mm] SIM translation stage offset	0	-0.01005468664627074			
[s] Observation start time (MET)	148984507.276713	148984506.25202			
Observation start date	2002-09-21T08:35:07	2002-09-21T08:35:06			
[s] Observation end time (MET)	149005817.027594	149005816.0029			
Observation end date	2002-09-21T14:30:17	2002-09-21T14:30:16			
Read mode	TIMED	TIMED			

2.3 Star Slots

2.4 FID Slots

A Summary

A.1 Status

V&V Scientist	Jen Lauer
V&V Date (YYYY-MM-DD)	2012.10.24
V&V Edition	1
V&V Disposition and Status	OK
V&V Charge Time	8.1688533345759

A.2 Comments