

V&V Reference Report

L2 ASCDS Version : 8.4.5

Observation 60996 - L2 Version 3
Chandra X-Ray Center

L2 Processing Date : Oct 15 2012

Contents

1	Front	2
2	OBI	3
2.1	OBI	3
2.1.1	Images	3
2.1.2	Bias	3
2.1.3	Parameters	4
2.1.4	Events	4
2.2	Compared Parameters	5
2.3	Star Slots	6
2.4	FID Slots	6
A	Summary	7
A.1	Status	7
A.2	Comments	7

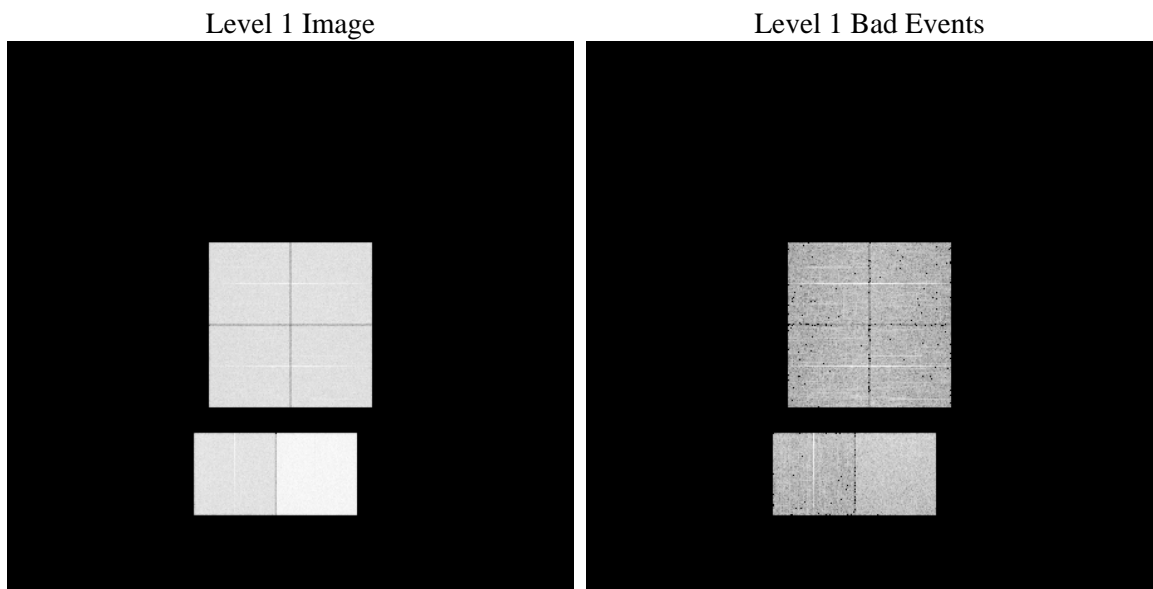
1 Front

seq_num	 	Sequence number
obs_id	60996	Observation id
title	ACIS-012367 diagnostics	Proposal title
observer	CHANDRA engineering request/realtime commanding	Principal investig
object	 	Source name
dtcycle	0	
cycle	P	events from which exps? Prim/Second/Both
ra_targ	0.0	Observer's specified target RA [deg]
dec_targ	0.0	Observer's specified target Dec [deg]
ra_nom	110.07395137539	Nominal RA [deg]
dec_nom	58.525162718822	Nominal Dec [deg]
roll_nom	85.57009277705	Nominal Roll [deg]
revision	3	Processing version of data
ontime	8351.6093377769	Sum of GTIs [s]
livetime	8245.8562316066	Livetime [s]
ontime0	3888.7476562858	Sum of GTIs [s]
ontime1	3992.4183026552	Sum of GTIs [s]
ontime2	3749.8750003576	Sum of GTIs [s]
ontime3	3834.140545696	Sum of GTIs [s]
ontime6	4151.7592560649	Sum of GTIs [s]
ontime7	8351.6093377769	Sum of GTIs [s]
l2events	1281897	Number of level 2 events

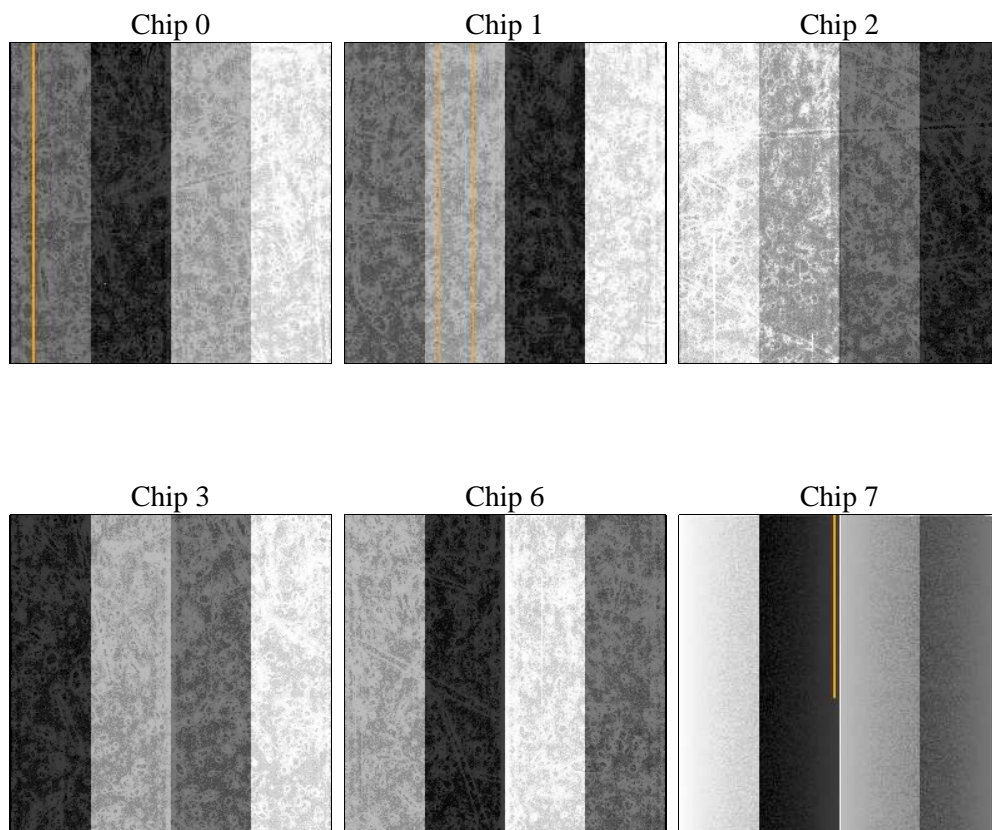
2 OBI

2.1 OBI

2.1.1 Images



2.1.2 Bias



2.1.3 Parameters

obi_num	0	Obi number	sched_exp_time	0.0	[s] Scheduled observation exposure time
ascdsver	8.4.5	Processing system revision	ontime	8351.6093377769	Sum of GTIs [s]
caldbver	4.5.2	 	ontime0	3888.7476562858	Sum of GTIs [s]
date	2012-10-15T17:08:00	Date and time of file creation	ontime1	3992.4183026552	Sum of GTIs [s]
revision	3	Processing version of data	ontime2	3749.8750003576	Sum of GTIs [s]
			ontime3	3834.140545696	Sum of GTIs [s]
			ontime6	4151.7592560649	Sum of GTIs [s]
			ontime7	8351.6093377769	Sum of GTIs [s]
			l1events	1553047	Number of level 1 events

2.1.4 Events

	ccd 0	ccd 1	ccd 2	ccd 3	ccd 6	ccd 7		ccd 0	ccd 1	ccd 2	ccd 3	ccd 6	ccd 7
level 1 events	212670	219117	208606	213745	236867	462042	grade 0 events	101266	104054	100411	103681	111315	103577
rejected events	31281	31645	32056	32283	34613	52952		47%	47%	48%	48%	46%	22%
rejected %	14%	14%	15%	15%	14%	11%	grade 1 events	565	526	647	597	565	285
								0%	0%	0%	0%	0%	0%
							grade 2 events	31604	33834	29683	30806	35274	91203
								14%	15%	14%	14%	14%	19%
							grade 3 events	11957	11873	11686	11812	12754	41002
								5%	5%	5%	5%	5%	8%
							grade 4 events	11677	11738	11643	11832	12519	40916
								5%	5%	5%	5%	5%	8%
							grade 5 events	1992	2064	1937	2040	2345	9211
								0%	0%	0%	0%	0%	1%
							grade 6 events	27070	28193	25288	25320	33134	137500
								12%	12%	12%	11%	13%	29%
							grade 7 events	26539	26835	27311	27657	28961	38348
								12%	12%	13%	12%	12%	8%

2.2 Compared Parameters

Parameter	Planned	Actual
Instrument	ACIS	ACIS
Detector	ACIS-012367	ACIS-012367
Grating	NONE	NONE
Data mode	FAINT	FAINT
Observation mode	SECONDARY	SECONDARY
[deg] Pointing RA	0	110.0739513753898
[deg] Pointing Dec	0	58.52516271882243
[deg] Pointing Roll	0.0	85.57009277705014
[mm] SIM focus pos	-0.782348	-0.7809083437167272
[mm] SIM defocus	0	0.7524282956875696
[mm] SIM translation stage pos	-233.592463	250.4635187648994
[mm] SIM translation stage offset	0	-0.007540371344731511
[s] Observation start time (MET)	151041424.061921	151041423.03721
Observation start date	2002-10-15T03:57:04	2002-10-15T03:57:03
[s] Observation end time (MET)	151063789.562848	151063788.53814
Observation end date	2002-10-15T10:09:50	2002-10-15T10:09:48
Read mode	TIMED	TIMED

Parameter	Planned	Actual
Obspar format version number	7	7
Obspar file type	PREDICTED	ACTUAL
Obspar update status	NONE	UPDATED
On-chip summing requested	N	N
Subarray requested	NONE	NONE
Alternating exposures requested	N	N
[s] Primary exposure time	3.2	3.2

2.3 Star Slots

2.4 FID Slots

A Summary

A.1 Status

V&V Scientist	Jen Lauer
V&V Date (YYYY-MM-DD)	2012.10.25
V&V Edition	1
V&V Disposition and Status	OK
V&V Charge Time	8.3516093377769

A.2 Comments