

V&V Reference Report

L2 ASCDS Version : 7.6.9

Observation 60856 - L2 Version 001
Chandra X-Ray Center

L2 Processing Date : Sep 19 2006

Contents

1	Front	2
2	OBI	3
2.1	OBI	3
2.1.1	Images	3
2.1.2	Bias	3
2.1.3	Parameters	4
2.1.4	Events	4
2.2	Compared Parameters	5
2.3	Aspect	6
2.4	Star Slots	8
2.5	FID Slots	8
A	Summary	9
A.1	Status	9
A.2	Comments	9

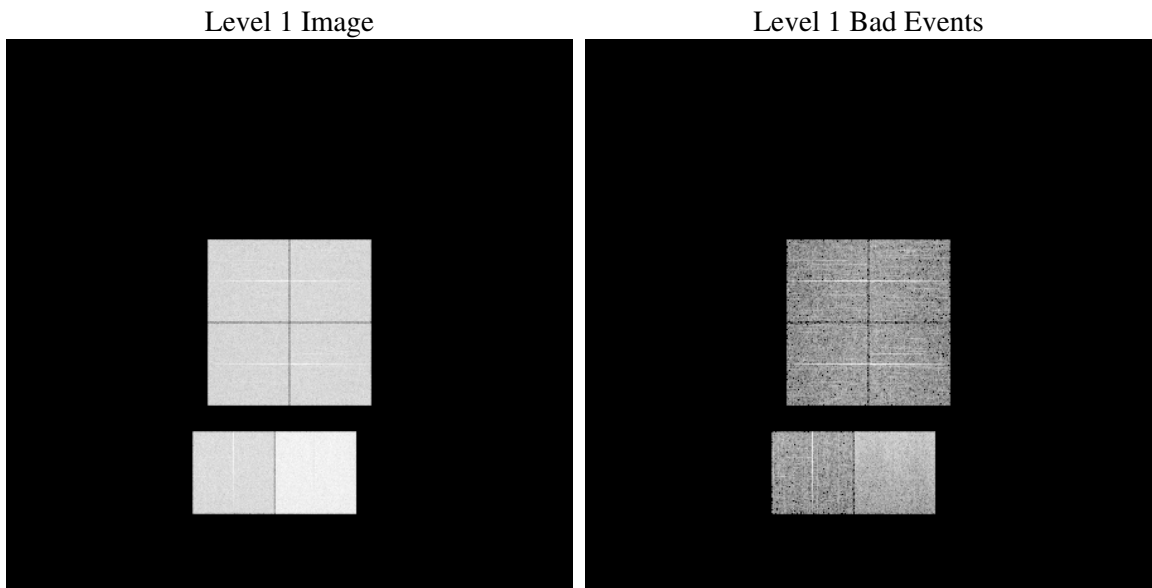
1 Front

seq_num	
obs_id	60856
title	ACIS-012367 diagnostics
observer	CHANDRA engineering request/realtime commanding
object	
dtcycle	0
cycle	P
ra_targ	0.0
dec_targ	0.0
ra_nom	107.73119101493
dec_nom	-24.703661885237
roll_nom	319.72172434103
revision	2
ontime	8462.5895262063
livetime	8355.4311220658
ontime0	4528.0873441398
ontime1	4579.9834415317
ontime2	4346.6737150252
ontime3	4498.8365622461
ontime6	4842.5860340297
ontime7	8462.5895262063
l2events	1273082

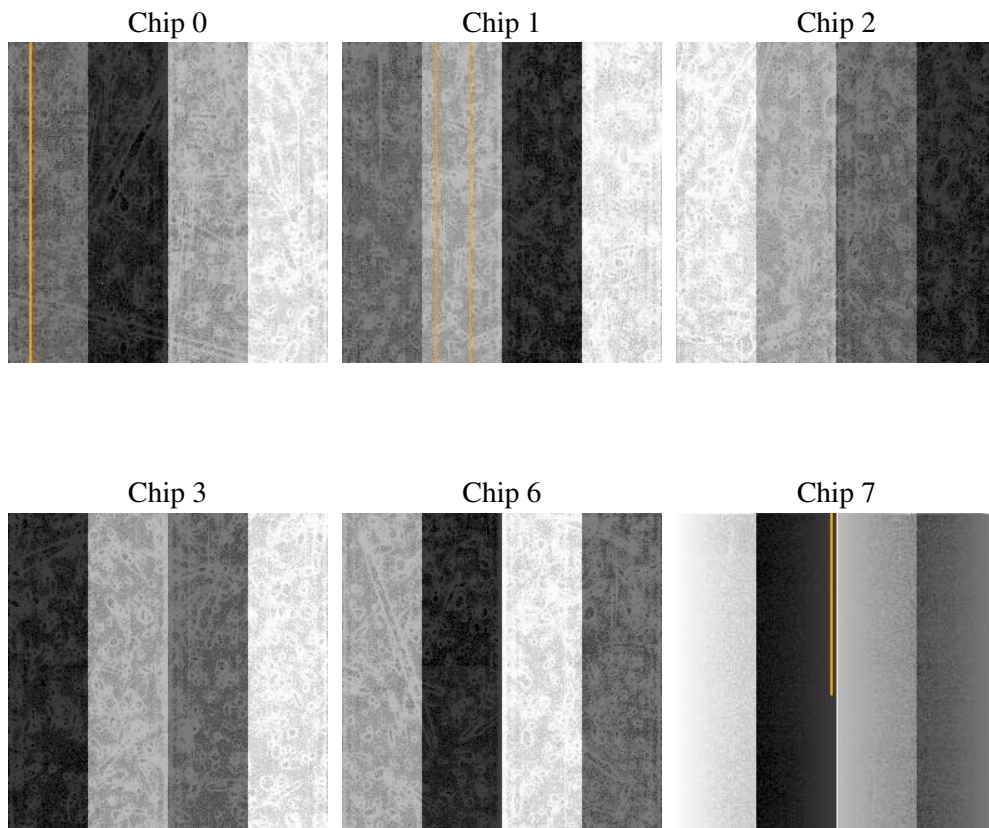
2 OBI

2.1 OBI

2.1.1 Images



2.1.2 Bias



2.1.3 Parameters

obi_num	0
ascdsver	7.6.9
caldbver	3.2.3
date	2006-09-19T17:19:04
revision	2

sched_exp_time	0.0
ontime	8465.5002852678
ontime0	4530.9570631981
ontime1	4582.8121205866
ontime2	4349.4613540769
ontime3	4501.788361311
ontime6	4845.3326331079
ontime7	8465.5002852678
l1events	1545656

2.1.4 Events

	ccd 0	ccd 1	ccd 2	ccd 3	ccd 6	ccd 7
level 1 events	218712	222400	214228	222366	245911	422039
rejected events	29567	30859	30008	31938	33017	59489
rejected %	13%	13%	14%	14%	13%	14%

	ccd 0	ccd 1	ccd 2	ccd 3	ccd 6	ccd 7
grade 0 events	104519	105473	103756	107225	116208	65906
	47%	47%	48%	48%	47%	15%
grade 1 events	587	510	615	623	525	137
	0%	0%	0%	0%	0%	0%
grade 2 events	32953	33820	31067	32453	36648	109061
	15%	15%	14%	14%	14%	25%
grade 3 events	12135	12090	11859	12348	13212	26722
	5%	5%	5%	5%	5%	6%
grade 4 events	12182	12215	11881	12276	13400	26580
	5%	5%	5%	5%	5%	6%
grade 5 events	2109	2094	1918	2184	2460	7781
	0%	0%	0%	0%	1%	1%
grade 6 events	27491	28082	25808	26252	33589	134418
	12%	12%	12%	11%	13%	31%
grade 7 events	26736	28116	27324	29005	29869	51434
	12%	12%	12%	13%	12%	12%

2.2 Compared Parameters

Parameter	Planned	Actual	Parameter	Planned	Actual
Instrument	ACIS	ACIS	Obspar format version number	6	6
Detector	ACIS-012367	ACIS-012367	Obspar file type	PREDICTED	ACTUAL
Grating	NONE	NONE	Obspar update status	NONE	UPDATED
Data mode	FAINT	FAINT	On-chip summing requested	N	N
Observation mode	SECONDARY	SECONDARY	Subarray requested	NONE	NONE
Pointing RA	0	107.7311910149316	Alternating exposures requested	N	N
Pointing Dec	0	-24.70366188523739	Primary exposure time	3.2	3.2
Pointing Roll	0.0	319.7217243410282			
SIM focus pos (mm)	-0.782348	-0.6828225247311905			
SIM defocus (mm)	0	0.8505141146731063			
SIM translation stage pos (mm)	-233.592463	250.466033080201			
SIM translation stage offset (mm)	0	-0.01005468664627074			
Observation start time	160874087.52214	160874086.49742			
Observation start date	2003-02-05T23:14:48	2003-02-05T23:14:46			
Observation end time	160888201.772733	160888200.74801			
Observation end date	2003-02-06T03:10:02	2003-02-06T03:10:00			
Read mode	TIMED	TIMED			

2.3 Aspect

2.4 Star Slots

2.5 FID Slots

A Summary

A.1 Status

V&V Scientist	Beth Sundheim
V&V Date (YYYY-MM-DD)	2006.09.20
V&V Edition	1
V&V Disposition and Status	OK
V&V Charge Time	8.46258952

A.2 Comments