

V&V Reference Report

L2 ASCDS Version : 7.6.8

Observation 60566 - L2 Version 001
Chandra X-Ray Center

L2 Processing Date : Jul 6 2006

Contents

1	Front	2
2	OBI	3
2.1	OBI	3
2.1.1	Images	3
2.1.2	Bias	3
2.1.3	Parameters	4
2.1.4	Events	4
2.2	Compared Parameters	5
2.3	Aspect	6
2.4	Star Slots	8
2.5	FID Slots	8
A	Summary	9
A.1	Status	9
A.2	Comments	9

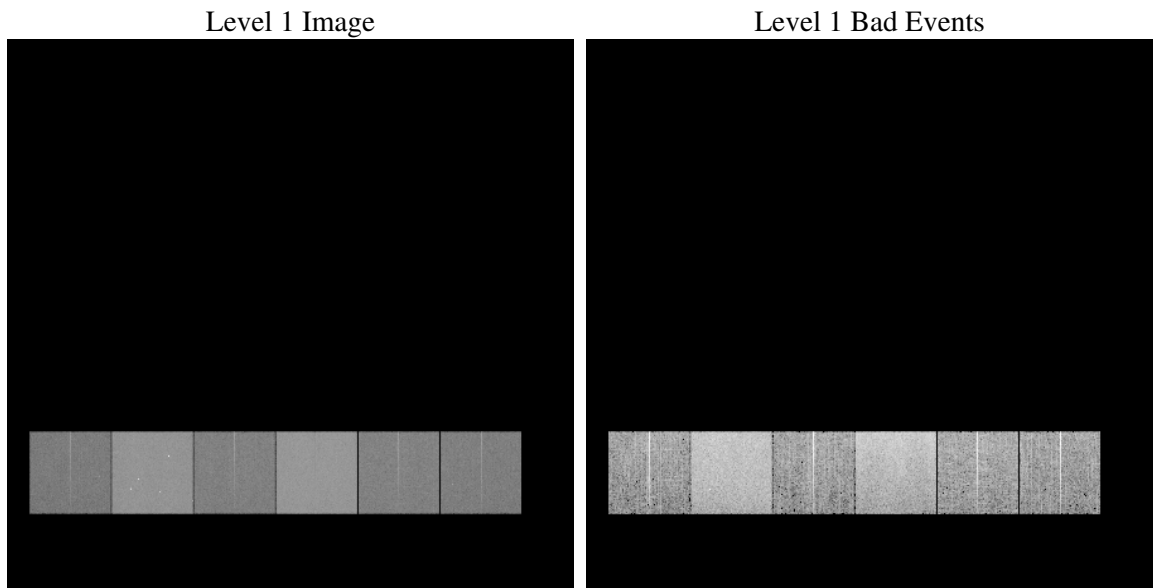
1 Front

seq_num	
obs_id	60566
title	ACIS-456789 diagnostics
observer	CHANDRA engineering request/realtime commanding
object	
dtcycle	0
cycle	P
ra_targ	0.0
dec_targ	0.0
ra_nom	33.979891716083
dec_nom	3.2203281731955
roll_nom	101.71510003585
revision	2
ontime	11161.557043761
livetime	11020.22268779
ontime4	5389.4016940594
ontime5	11161.598083764
ontime6	5911.2426348627
ontime7	11161.557043761
ontime8	6076.6166297793
ontime9	5784.7212745249
l2events	1616705

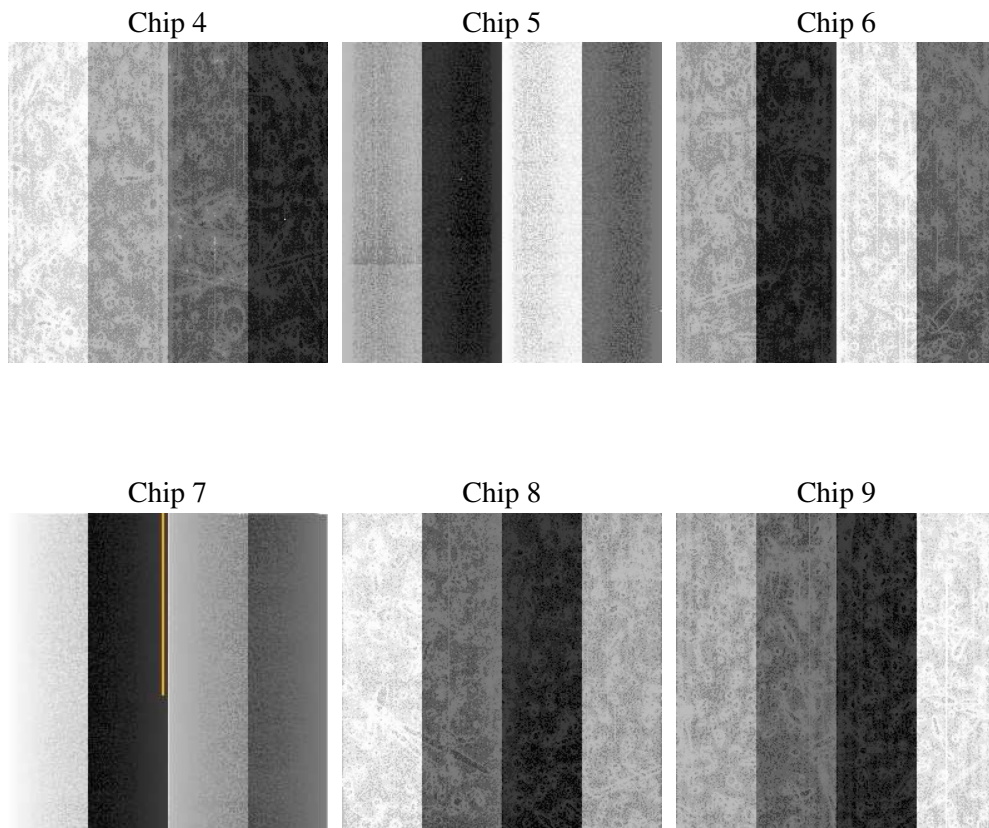
2 OBI

2.1 OBI

2.1.1 Images



2.1.2 Bias



2.1.3 Parameters

obi_num	0
ascdsver	7.6.8
caldbver	3.2.2
date	2006-07-06T06:30:57
revision	2

sched_exp_time	0.0
ontime	11162.033407956
ontime4	5389.8351435959
ontime5	11162.033407956
ontime6	5911.6369190514
ontime7	11162.033407956
ontime8	6076.9288339913
ontime9	5785.2386787236
l1events	2020388

2.1.4 Events

	ccd 4	ccd 5	ccd 6	ccd 7	ccd 8	ccd 9
level 1 events	236518	463637	274101	501399	285958	258775
rejected events	39577	81149	40902	74922	44790	39632
rejected %	16%	17%	14%	14%	15%	15%

	ccd 4	ccd 5	ccd 6	ccd 7	ccd 8	ccd 9
grade 0 events	114195	48348	126395	75623	131780	120792
	48%	10%	46%	15%	46%	46%
grade 1 events	855	161	596	177	671	727
	0%	0%	0%	0%	0%	0%
grade 2 events	31226	180253	40446	130052	41977	37043
	13%	38%	14%	25%	14%	14%
grade 3 events	13096	13195	14468	30878	15719	13997
	5%	2%	5%	6%	5%	5%
grade 4 events	13000	12453	14460	30176	15445	13942
	5%	2%	5%	6%	5%	5%
grade 5 events	2550	8585	2839	9446	3228	2939
	1%	1%	1%	1%	1%	1%
grade 6 events	25424	128239	37430	159748	36247	33369
	10%	27%	13%	31%	12%	12%
grade 7 events	36172	72403	37467	65299	40891	35966
	15%	15%	13%	13%	14%	13%

2.2 Compared Parameters

Parameter	Planned	Actual	Parameter	Planned	Actual
Instrument	ACIS	ACIS	Obspar format version number	6	6
Detector	ACIS-456789	ACIS-456789	Obspar file type	PREDICTED	ACTUAL
Grating	NONE	NONE	Obspar update status	NONE	UPDATED
Data mode	FAINT	FAINT	On-chip summing requested	N	N
Observation mode	SECONDARY	SECONDARY	Subarray requested	NONE	NONE
Pointing RA	0	33.97989171608327	Alternating exposures requested	N	N
Pointing Dec	0	3.220328173195476	Primary exposure time	0.000000	3.2
Pointing Roll	0.0	101.7151000358474			
SIM focus pos (mm)	-0.684267	-0.7809083437167272			
SIM defocus (mm)	0	0.7524282956875696			
SIM translation stage pos (mm)	-190.132523	250.466033080201			
SIM translation stage offset (mm)	0	-0.01005468664627074			
Observation start time	179100806.394714	179100805.37001			
Observation start date	2003-09-04T22:13:26	2003-09-04T22:13:25			
Observation end time	179123100.145668	179123099.12097			
Observation end date	2003-09-05T04:25:00	2003-09-05T04:24:59			
Read mode	TIMED	TIMED			

2.3 Aspect

2.4 Star Slots

2.5 FID Slots

A Summary

A.1 Status

V&V Scientist	Jen Lauer
V&V Date (YYYY-MM-DD)	2006.07.06
V&V Edition	1
V&V Disposition and Status	OK
V&V Charge Time	11.161557

A.2 Comments