

V&V Reference Report

L2 ASCDS Version : 7.6.7.2

Observation 60246 - L2 Version 001
Chandra X-Ray Center

L2 Processing Date : May 20 2006

Contents

1	Front	2
2	OBI	3
2.1	OBI	3
2.1.1	Images	3
2.1.2	Bias	3
2.1.3	Parameters	4
2.1.4	Events	4
2.2	Compared Parameters	5
2.3	Aspect	6
2.4	Star Slots	8
2.5	FID Slots	8
A	Summary	9
A.1	Status	9
A.2	Comments	9

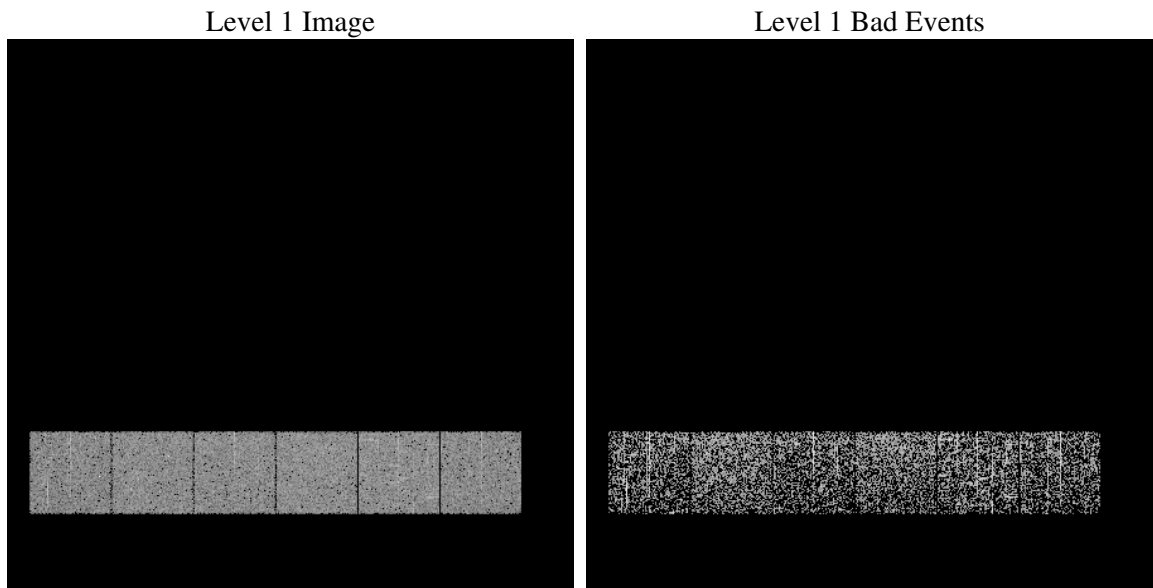
1 Front

seq_num	
obs_id	60246
title	ACIS-456789 diagnostics
observer	CHANDRA engineering request/realtime commanding
object	
dtcycle	0
cycle	P
ra_targ	0.0
dec_targ	0.0
ra_nom	219.98078724828
dec_nom	-7.0212872468631
roll_nom	195.28485788163
revision	2
ontime	499.19999814034
livetime	492.87882718173
ontime4	450.58509472013
ontime5	499.19999814034
ontime6	473.63709288836
ontime7	499.19999814034
ontime8	489.47704729438
ontime9	467.03207209706
l2events	86401

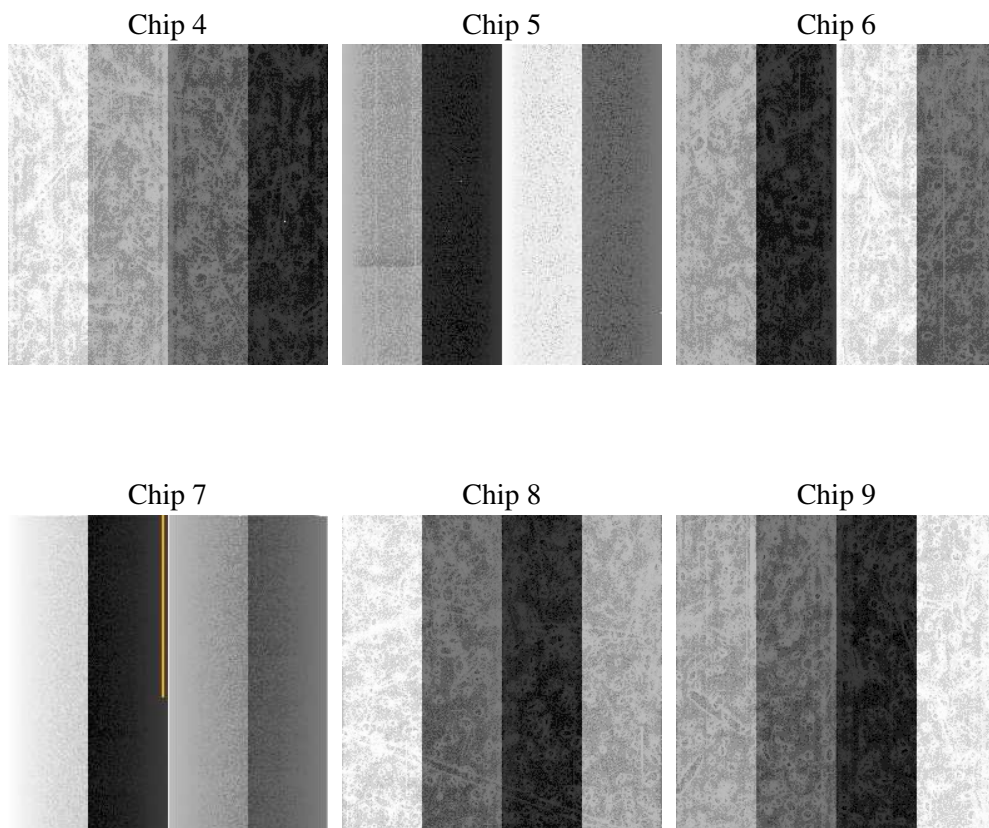
2 OBI

2.1 OBI

2.1.1 Images



2.1.2 Bias



2.1.3 Parameters

obi_num	0
ascdsver	7.6.7.2
caldbver	3.2.2
date	2006-05-20T17:50:00
revision	2

sched_exp_time	0.0
ontime	502.35660195351
ontime4	453.7416985333
ontime5	502.35660195351
ontime6	476.42867997289
ontime7	502.35660195351
ontime8	492.63365110755
ontime9	469.94677919149
l1events	114917

2.1.4 Events

	ccd 4	ccd 5	ccd 6	ccd 7	ccd 8	ccd 9
level 1 events	17726	19166	19061	20085	20699	18180
rejected events	3959	4089	3493	3740	4279	3436
rejected %	22%	21%	18%	18%	20%	18%

	ccd 4	ccd 5	ccd 6	ccd 7	ccd 8	ccd 9
grade 0 events	8068	1748	8447	2840	9040	8154
	45%	9%	44%	14%	43%	44%
grade 1 events	59	14	44	11	44	41
	0%	0%	0%	0%	0%	0%
grade 2 events	2150	7124	2639	5058	2811	2552
	12%	37%	13%	25%	13%	14%
grade 3 events	880	517	1023	1181	1031	943
	4%	2%	5%	5%	4%	5%
grade 4 events	948	478	1040	1110	1095	980
	5%	2%	5%	5%	5%	5%
grade 5 events	208	408	232	455	297	222
	1%	2%	1%	2%	1%	1%
grade 6 events	1825	5323	2526	6262	2582	2224
	10%	27%	13%	31%	12%	12%
grade 7 events	3588	3554	3110	3168	3799	3064
	20%	18%	16%	15%	18%	16%

2.2 Compared Parameters

Parameter	Planned	Actual	Parameter	Planned	Actual
Instrument	ACIS	ACIS	Obspar format version number	6	6
Detector	ACIS-456789	ACIS-456789	Obspar file type	PREDICTED	ACTUAL
Grating	NONE	NONE	Obspar update status	NONE	UPDATED
Data mode	FAINT	FAINT	On-chip summing requested	N	N
Observation mode	SECONDARY	SECONDARY	Subarray requested	NONE	NONE
Pointing RA	0	219.9807872482819	Alternating exposures requested	N	N
Pointing Dec	0	-7.02128724686313	Primary exposure time	0.000000	3.2
Pointing Roll	0.0	195.2848578816319			
SIM focus pos (mm)	-0.684267	-0.7809083437167272			
SIM defocus (mm)	0	0.7524282956875696			
SIM translation stage pos (mm)	-190.132523	250.466033080201			
SIM translation stage offset (mm)	0	-0.01005468664627074			
Observation start time	200129203.009922	200129201.98492			
Observation start date	2004-05-05T07:26:43	2004-05-05T07:26:41			
Observation end time	200143565.310555	200143564.28555			
Observation end date	2004-05-05T11:26:05	2004-05-05T11:26:04			
Read mode	TIMED	TIMED			

2.3 Aspect

2.4 Star Slots

2.5 FID Slots

A Summary

A.1 Status

V&V Scientist	Beth Sundheim
V&V Date (YYYY-MM-DD)	2006.05.21
V&V Edition	1
V&V Disposition and Status	OK
V&V Charge Time	0.49919999

A.2 Comments