

# V&V Reference Report

## L2 ASCDS Version : 7.6.7.2

Observation 60196 - L2 Version 001  
Chandra X-Ray Center

L2 Processing Date : May 1 2006

## Contents

<b>1</b>	<b>Front</b>	<b>2</b>
<b>2</b>	<b>OBI</b>	<b>3</b>
2.1	OBI . . . . .	3
2.1.1	Images . . . . .	3
2.1.2	Bias . . . . .	3
2.1.3	Parameters . . . . .	4
2.1.4	Events . . . . .	4
2.2	Compared Parameters . . . . .	5
2.3	Aspect . . . . .	6
2.4	Star Slots . . . . .	8
2.5	FID Slots . . . . .	8
<b>A</b>	<b>Summary</b>	<b>9</b>
A.1	Status . . . . .	9
A.2	Comments . . . . .	9

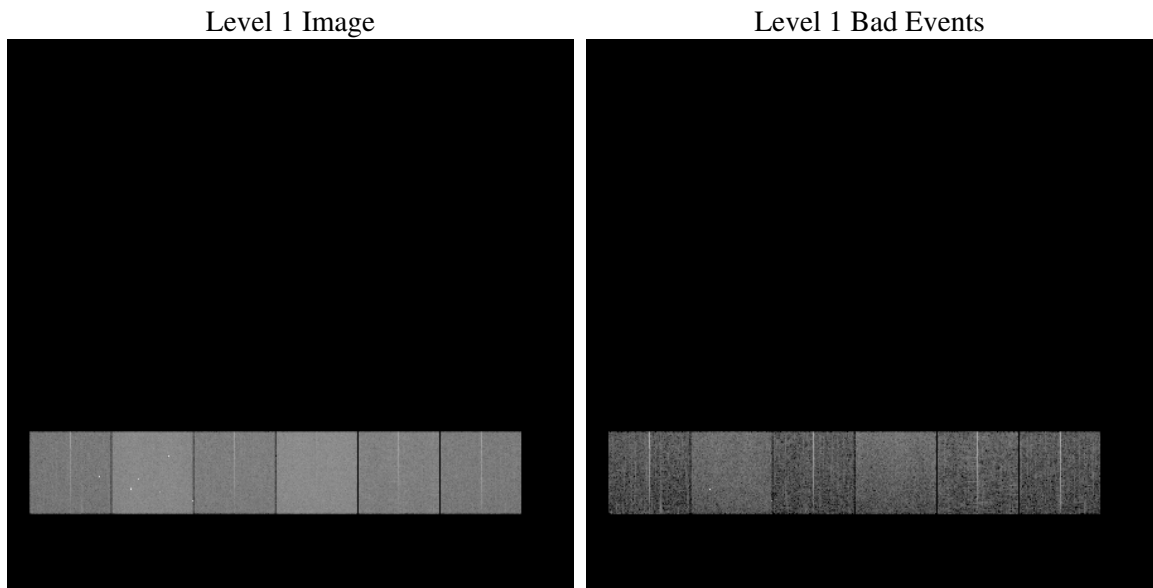
# 1 Front

seq_num	&#160
obs_id	60196
title	ACIS-456789 diagnostics
observer	CHANDRA engineering request/realtime commanding
object	&#160
dtcycle	0
cycle	P
ra_targ	0.0
dec_targ	0.0
ra_nom	236.00355557535
dec_nom	-13.02838519376
roll_nom	244.1409113317
revision	2
ontime	7267.1999729276
livetime	7175.1783110879
ontime4	4533.1282714903
ontime5	7267.1999729276
ontime6	5108.7077491283
ontime7	7267.1999729276
ontime8	5268.8733662963
ontime9	4846.1878593862
l2events	993748

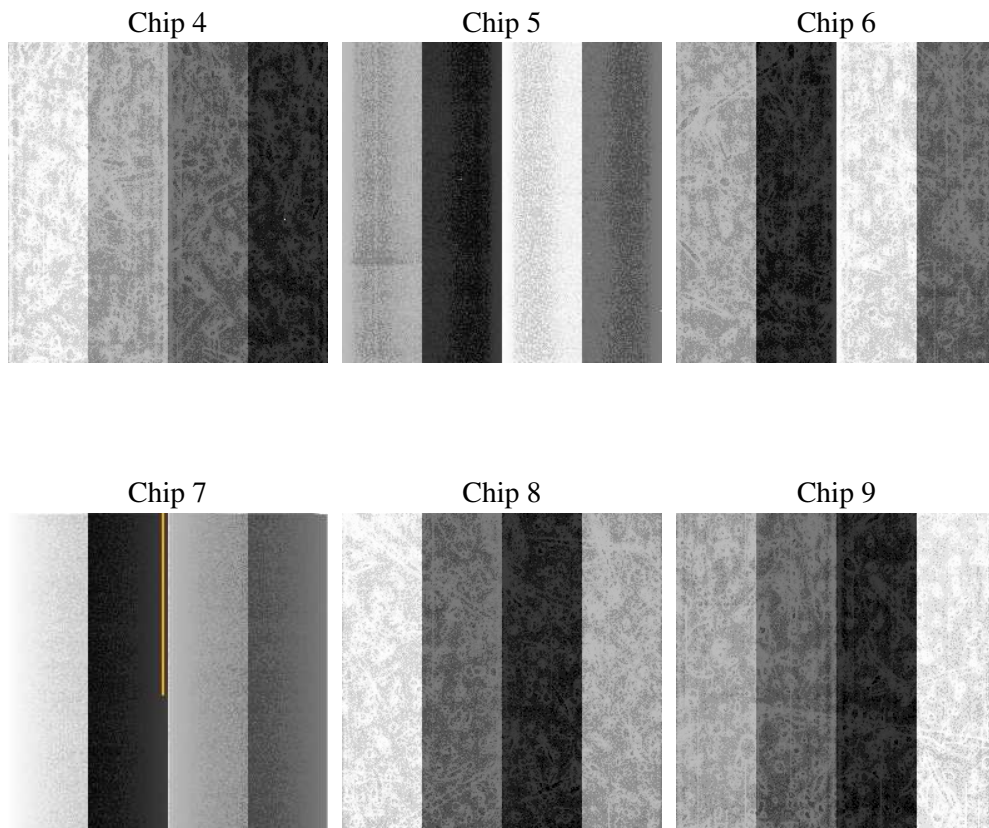
## 2 OBI

### 2.1 OBI

#### 2.1.1 Images



#### 2.1.2 Bias



### 2.1.3 Parameters

obi_num	0
ascdsver	7.6.7.2
caldsver	3.2.1
date	2006-05-01T23:19:17
revision	2

sched_exp_time	0.0
ontime	7269.579921633
ontime4	4534.1918360293
ontime5	7269.579921633
ontime6	5111.0876978338
ontime7	7269.579921633
ontime8	5269.8958908617
ontime9	4848.5678080916
l1events	1318806

### 2.1.4 Events

	ccd 4	ccd 5	ccd 6	ccd 7	ccd 8	ccd 9
level 1 events	170248	267730	198181	284176	214453	184018
rejected events	37297	57540	36676	52972	44135	37329
rejected %	21%	21%	18%	18%	20%	20%

	ccd 4	ccd 5	ccd 6	ccd 7	ccd 8	ccd 9
grade 0 events	77478	25109	87821	40487	92801	80651
	45%	9%	44%	14%	43%	43%
grade 1 events	637	147	430	114	507	485
	0%	0%	0%	0%	0%	0%
grade 2 events	20845	98326	27883	69560	29786	25419
	12%	36%	14%	24%	13%	13%
grade 3 events	8773	6631	10161	16548	10921	9290
	5%	2%	5%	5%	5%	5%
grade 4 events	8950	6476	10277	16695	11223	9450
	5%	2%	5%	5%	5%	5%
grade 5 events	2221	6125	2664	6423	3018	2585
	1%	2%	1%	2%	1%	1%
grade 6 events	16905	73648	25363	87914	25587	21879
	9%	27%	12%	30%	11%	11%
grade 7 events	34439	51268	33582	46435	40610	34259
	20%	19%	16%	16%	18%	18%

## 2.2 Compared Parameters

Parameter	Planned	Actual	Parameter	Planned	Actual
Instrument	ACIS	ACIS	Obspar format version number	6	6
Detector	ACIS-456789	ACIS-456789	Obspar file type	PREDICTED	ACTUAL
Grating	NONE	NONE	Obspar update status	NONE	UPDATED
Data mode	FAINT	FAINT	On-chip summing requested	N	N
Observation mode	SECONDARY	SECONDARY	Subarray requested	NONE	NONE
Pointing RA	0	236.0035555753483	Alternating exposures requested	N	N
Pointing Dec	0	-13.02838519376011	Primary exposure time	0.000000	3.2
Pointing Roll	0.0	244.1409113316995			
SIM focus pos (mm)	-0.684267	-0.6828225247311905			
SIM defocus (mm)	0	0.8505141146731063			
SIM translation stage pos (mm)	-190.132523	250.466033080201			
SIM translation stage offset (mm)	0	-0.01005468664627074			
Observation start time	203554542.011232	203554540.98622			
Observation start date	2004-06-13T22:55:42	2004-06-13T22:55:40			
Observation end time	203567973.611827	203567972.58682			
Observation end date	2004-06-14T02:39:34	2004-06-14T02:39:32			
Read mode	TIMED	TIMED			

## 2.3 Aspect



## **2.4 Star Slots**

## **2.5 FID Slots**



## A Summary

### A.1 Status

V&V Scientist	Jen Lauer
V&V Date (YYYY-MM-DD)	2006.05.02
V&V Edition	1
V&V Disposition and Status	OK
V&V Charge Time	7.26719997

### A.2 Comments