

V&V Reference Report

L2 ASCDS Version : 7.6.7.1

Observation 60016 - L2 Version 001
Chandra X-Ray Center

L2 Processing Date : Apr 17 2006

Contents

1	Front	2
2	OBI	3
2.1	OBI	3
2.1.1	Images	3
2.1.2	Bias	3
2.1.3	Parameters	4
2.1.4	Events	4
2.2	Compared Parameters	5
2.3	Aspect	6
2.4	Star Slots	8
2.5	FID Slots	8
A	Summary	9
A.1	Status	9
A.2	Comments	9

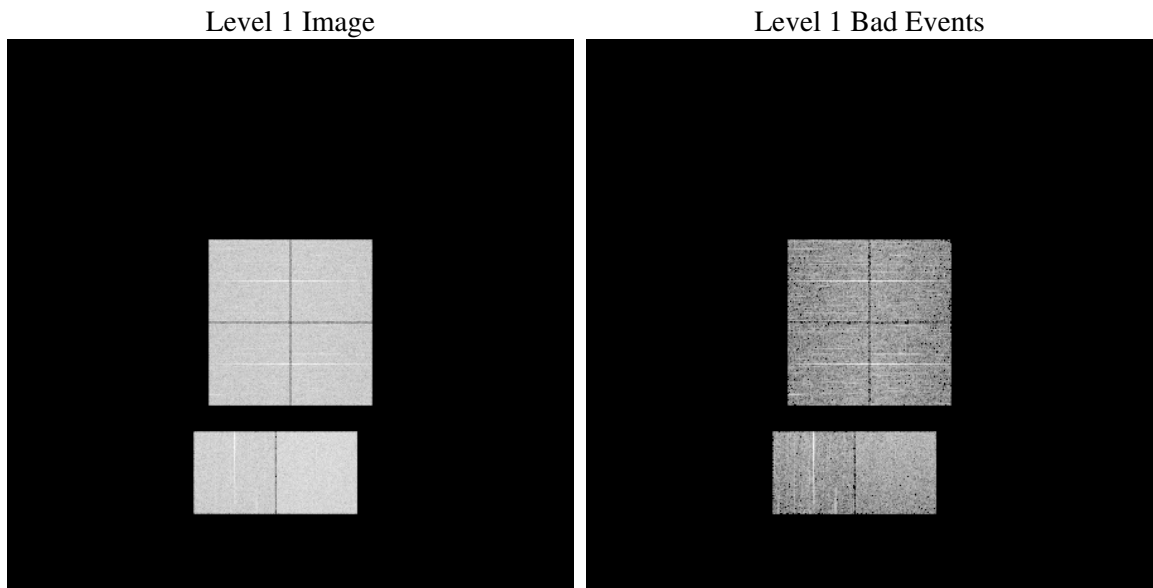
1 Front

seq_num	
obs_id	60016
title	ACIS-012367 diagnostics
observer	CHANDRA engineering request/realtime commanding
object	
dtcycle	0
cycle	P
ra_targ	0.0
dec_targ	0.0
ra_nom	359.03281266565
dec_nom	-30.994320769134
roll_nom	338.59238053458
revision	2
ontime	4534.399983108
livetime	4476.9826802341
ontime0	3701.4684609473
ontime1	3727.397020191
ontime2	3594.5164501667
ontime3	3620.4444221854
ontime6	3863.5179923177
ontime7	4534.399983108
l2events	626959

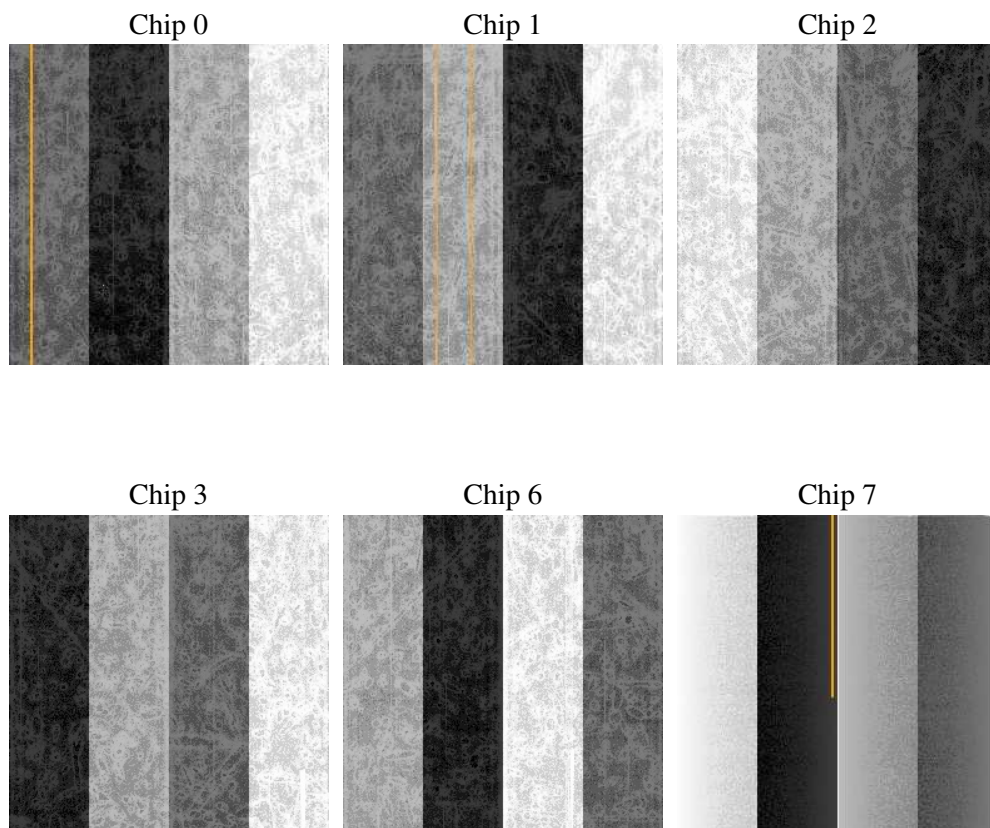
2 OBI

2.1 OBI

2.1.1 Images



2.1.2 Bias



2.1.3 Parameters

obi_num	0
ascdsver	7.6.7.1
caldbver	3.2.1
date	2006-04-17T05:28:22
revision	2

sched_exp_time	0.0
ontime	4618.4356262088
ontime0	3766.0582721829
ontime1	3798.4687522054
ontime2	3665.5881522298
ontime3	3688.275153935
ontime6	3934.5896845162
ontime7	4618.4356262088
l1events	847086

2.1.4 Events

	ccd 0	ccd 1	ccd 2	ccd 3	ccd 6	ccd 7
level 1 events	132532	133159	130715	133054	144702	172924
rejected events	29571	29447	29537	30719	31950	37333
rejected %	22%	22%	22%	23%	22%	21%

	ccd 0	ccd 1	ccd 2	ccd 3	ccd 6	ccd 7
grade 0 events	57518	57827	57450	58306	62044	23505
	43%	43%	43%	43%	42%	13%
grade 1 events	388	311	380	380	339	69
	0%	0%	0%	0%	0%	0%
grade 2 events	18262	18830	17568	17744	19756	41382
	13%	14%	13%	13%	13%	23%
grade 3 events	6820	6716	6949	6854	7231	10012
	5%	5%	5%	5%	4%	5%
grade 4 events	6748	6718	6809	6846	7213	9572
	5%	5%	5%	5%	4%	5%
grade 5 events	1720	1820	1622	1863	2007	4279
	1%	1%	1%	1%	1%	2%
grade 6 events	15375	15633	14379	14463	18562	53629
	11%	11%	11%	10%	12%	31%
grade 7 events	25701	25304	25558	26598	27550	30476
	19%	19%	19%	19%	19%	17%

2.2 Compared Parameters

Parameter	Planned	Actual	Parameter	Planned	Actual
Instrument	ACIS	ACIS	Obspar format version number	6	6
Detector	ACIS-012367	ACIS-012367	Obspar file type	PREDICTED	ACTUAL
Grating	NONE	NONE	Obspar update status	NONE	UPDATED
Data mode	FAINT	FAINT	On-chip summing requested	N	N
Observation mode	SECONDARY	SECONDARY	Subarray requested	NONE	NONE
Pointing RA	0	359.0328126656519	Alternating exposures requested	N	N
Pointing Dec	0	-30.9943207691341	Primary exposure time	3.2	3.2
Pointing Roll	0.0	338.5923805345791			
SIM focus pos (mm)	-0.782348	-0.6828225247311905			
SIM defocus (mm)	0	0.8505141146731063			
SIM translation stage pos (mm)	-233.592463	250.466033080201			
SIM translation stage offset (mm)	0	-0.01005468664627074			
Observation start time	213426706.950413	213426705.92542			
Observation start date	2004-10-06T05:11:47	2004-10-06T05:11:45			
Observation end time	213434365.750755	213434364.72576			
Observation end date	2004-10-06T07:19:26	2004-10-06T07:19:24			
Read mode	TIMED	TIMED			

2.3 Aspect

2.4 Star Slots

2.5 FID Slots

A Summary

A.1 Status

V&V Scientist	Jen Lauer
V&V Date (YYYY-MM-DD)	2006.04.17
V&V Edition	1
V&V Disposition and Status	OK
V&V Charge Time	4.53439998

A.2 Comments