

V&V Reference Report

L2 ASCDS Version : 7.6.7.1

Observation 59576 - L2 Version 002
Chandra X-Ray Center

L2 Processing Date : Mar 14 2006

Contents

1	Front	2
2	OBI	3
2.1	OBI	3
2.1.1	Images	3
2.1.2	Bias	3
2.1.3	Parameters	4
2.1.4	Events	4
2.2	Compared Parameters	5
2.3	Aspect	6
2.4	Star Slots	8
2.5	FID Slots	8
A	Summary	9
A.1	Status	9
A.2	Comments	9

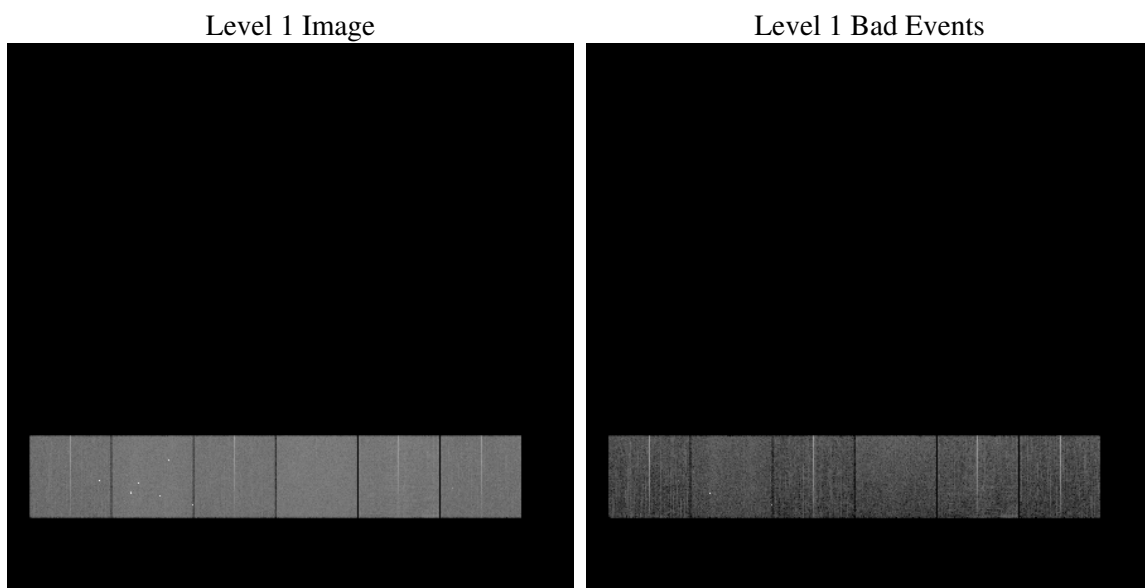
1 Front

seq_num	
obs_id	59576
title	ACIS-456789 diagnostics
observer	CHANDRA engineering request/realtime commanding
object	
dtcycle	0
cycle	P
ra_targ	0.0
dec_targ	0.0
ra_nom	256.51661498725
dec_nom	-23.025366592952
roll_nom	264.97739282092
revision	2
ontime	8274.6422678828
livetime	8169.8637650955
ontime4	6958.9288250804
ontime5	8274.6833078861
ontime6	7509.8535182178
ontime7	8274.6422678828
ontime8	7701.1534644067
ontime9	7269.8981949389
l2events	1025107

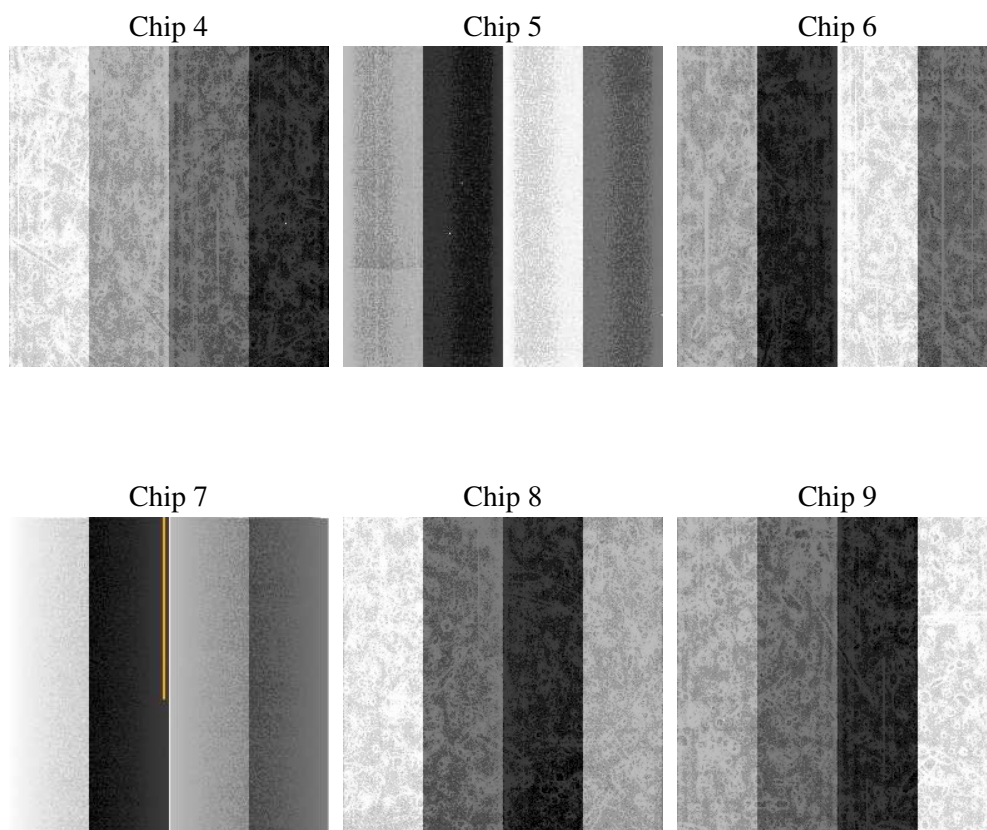
2 OBI

2.1 OBI

2.1.1 Images



2.1.2 Bias



2.1.3 Parameters

obi_num	0
ascdsver	7.6.7.1
caldbver	3.2.1
date	2006-03-14T21:49:12
revision	2

sched_exp_time	0.0
ontime	8277.5343284905
ontime4	6961.6977656782
ontime5	8277.5343284905
ontime6	7512.6634988189
ontime7	8277.5343284905
ontime8	7703.881365031
ontime9	7272.8312955499
l1events	1488954

2.1.4 Events

	ccd 4	ccd 5	ccd 6	ccd 7	ccd 8	ccd 9
level 1 events	218259	267652	241147	271752	262316	227828
rejected events	62113	70524	60865	65402	69634	60187
rejected %	28%	26%	25%	24%	26%	26%

	ccd 4	ccd 5	ccd 6	ccd 7	ccd 8	ccd 9
grade 0 events	92454	24176	97349	32181	104004	92680
	42%	9%	40%	11%	39%	40%
grade 1 events	772	269	511	121	594	600
	0%	0%	0%	0%	0%	0%
grade 2 events	23299	88688	31629	64004	33797	28368
	10%	33%	13%	23%	12%	12%
grade 3 events	10286	5356	10984	13669	12711	10634
	4%	2%	4%	5%	4%	4%
grade 4 events	10439	5000	11002	13351	12643	10504
	4%	1%	4%	4%	4%	4%
grade 5 events	3268	6629	3613	7037	4603	3817
	1%	2%	1%	2%	1%	1%
grade 6 events	19733	73979	29402	83214	29627	25524
	9%	27%	12%	30%	11%	11%
grade 7 events	58008	63555	56657	58175	64337	55701
	26%	23%	23%	21%	24%	24%

2.2 Compared Parameters

Parameter	Planned	Actual	Parameter	Planned	Actual
Instrument	ACIS	ACIS	Obspar format version number	6	6
Detector	ACIS-456789	ACIS-456789	Obspar file type	PREDICTED	ACTUAL
Grating	NONE	NONE	Obspar update status	NONE	UPDATED
Data mode	FAINT	FAINT	On-chip summing requested	N	N
Observation mode	SECONDARY	SECONDARY	Subarray requested	NONE	NONE
Pointing RA	0	256.5166149872479	Alternating exposures requested	N	N
Pointing Dec	0	-23.02536659295205	Primary exposure time	3.2	3.2
Pointing Roll	0.0	264.9773928209179			
SIM focus pos (mm)	-0.684267	-0.6828225247311905			
SIM defocus (mm)	0	0.8505141146731063			
SIM translation stage pos (mm)	-190.132523	250.466033080201			
SIM translation stage offset (mm)	0	-0.01005468664627074			
Observation start time	237171249.174767	237171248.14977			
Observation start date	2005-07-08T00:54:09	2005-07-08T00:54:08			
Observation end time	237200498.576106	237200497.55111			
Observation end date	2005-07-08T09:01:39	2005-07-08T09:01:37			
Read mode	TIMED	TIMED			

2.3 Aspect

2.4 Star Slots

2.5 FID Slots

A Summary

A.1 Status

V&V Scientist	Jen Lauer
V&V Date (YYYY-MM-DD)	2006.03.15
V&V Edition	1
V&V Disposition and Status	OK
V&V Charge Time	8.27464226

A.2 Comments

The ACIS focal plane temperature was outside the calibration limits for the entire observation.