

V&V Reference Report

L2 ASCDS Version : 7.6.7.1

Observation 5936 - L2 Version 002
Chandra X-Ray Center

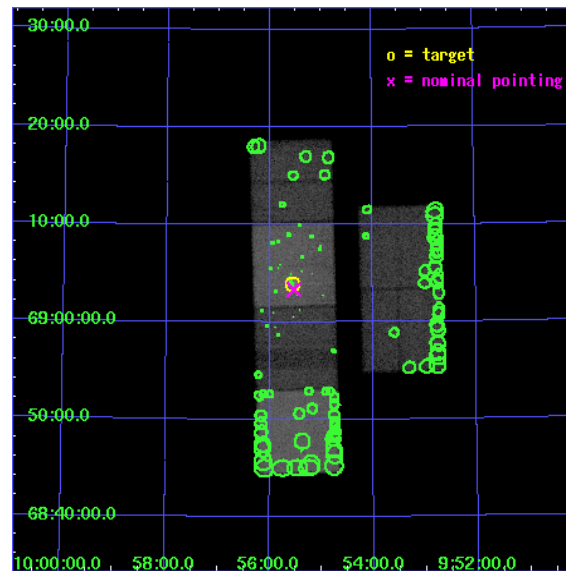
L2 Processing Date : Mar 8 2006

Contents

1	Front	2
2	OBI	3
2.1	OBI	3
2.1.1	Images	3
2.1.2	Bias	3
2.1.3	Parameters	4
2.1.4	Events	4
2.2	Compared Parameters	5
2.3	Aspect	6
2.4	Star Slots	9
2.4.1	Slot 3	9
2.4.2	Slot 4	10
2.4.3	Slot 5	11
2.4.4	Slot 6	12
2.4.5	Slot 7	13
2.5	FID Slots	14
2.5.1	Slot 0	14
2.5.2	Slot 1	15
2.5.3	Slot 2	16
3	Point Sources	17
A	Summary	18
A.1	Status	18
A.2	Comments	18

1 Front

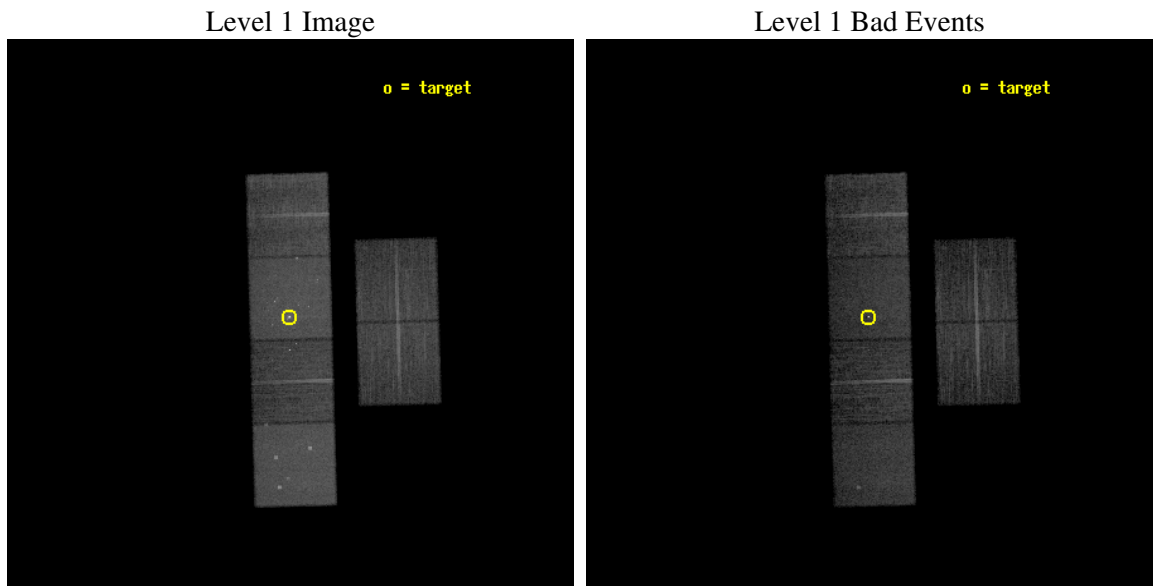
seq_num	600455
obs_id	5936
title	An Unprecedented View of a Galaxy's Dynamic X-ray Source Population
observer	Dr. David Pooley
object	M81
dtcycle	0
cycle	P
ra_targ	148.888333
dec_targ	69.065306
ra_nom	148.88294796352
dec_nom	69.055913810605
roll_nom	268.42936166191
revision	2
ontime	11551.999956965
livetime	11405.721577731
ontime2	11551.999956965
ontime3	11551.999956965
ontime5	11551.999956965
ontime6	11551.999956965
ontime7	11551.999956965
ontime8	11548.758986682
l2events	294748



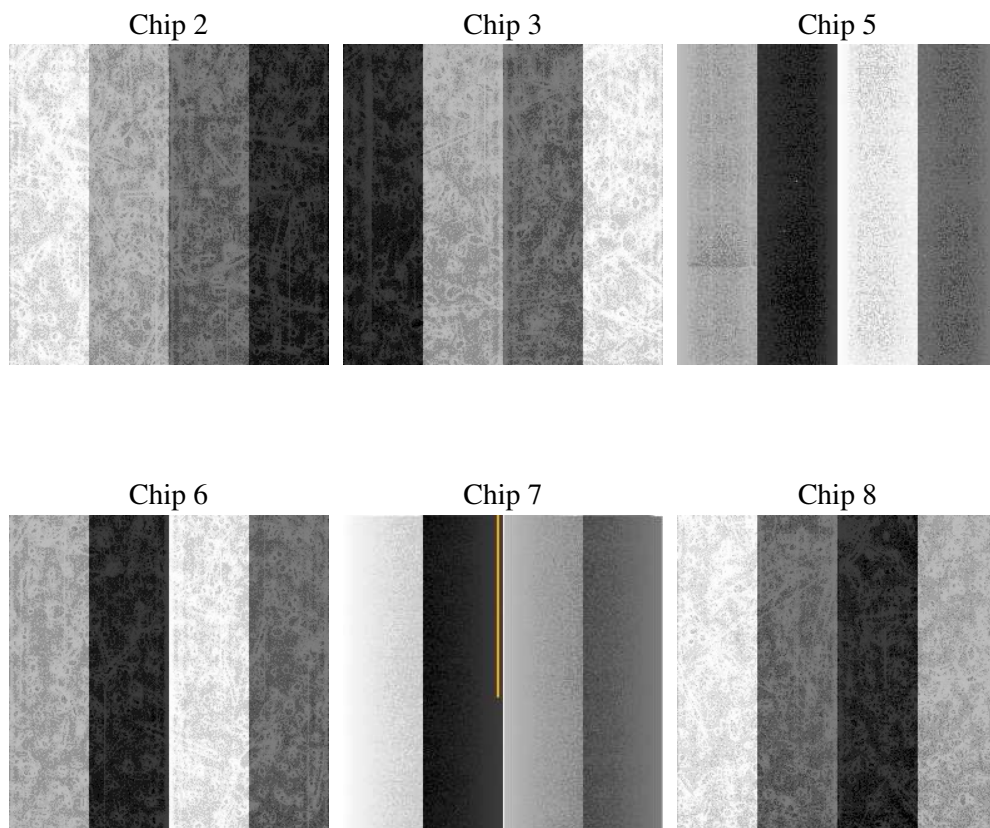
2 OBI

2.1 OBI

2.1.1 Images



2.1.2 Bias



2.1.3 Parameters

obi_num	0
ascdsver	7.6.7.1
caldbver	3.2.1
date	2006-03-08T10:55:04
revision	2

sched_exp_time	11382.627000
ontime	11875.028431594
ontime2	11875.028431594
ontime3	11875.028431594
ontime5	11875.028431594
ontime6	11875.028431594
ontime7	11875.028431594
ontime8	11871.787461311
l1events	827315

2.1.4 Events

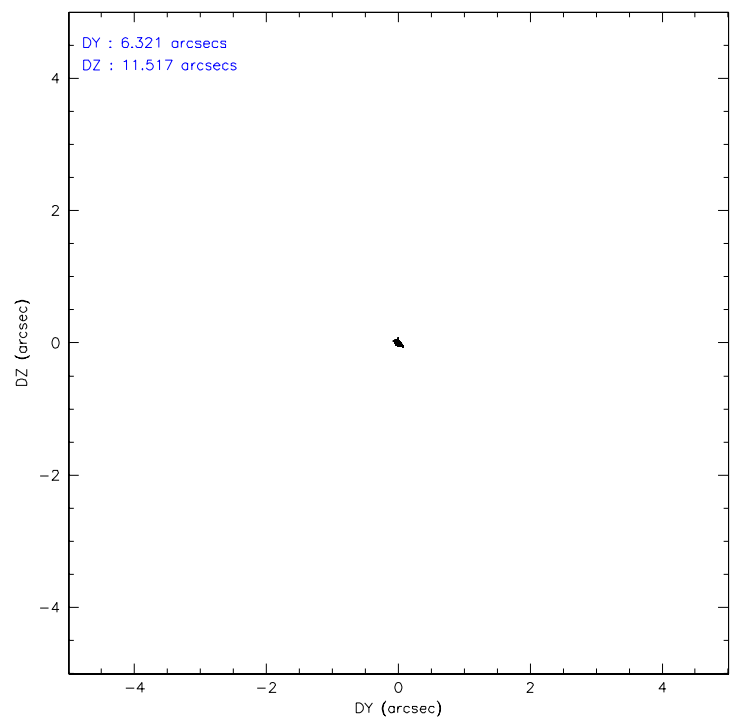
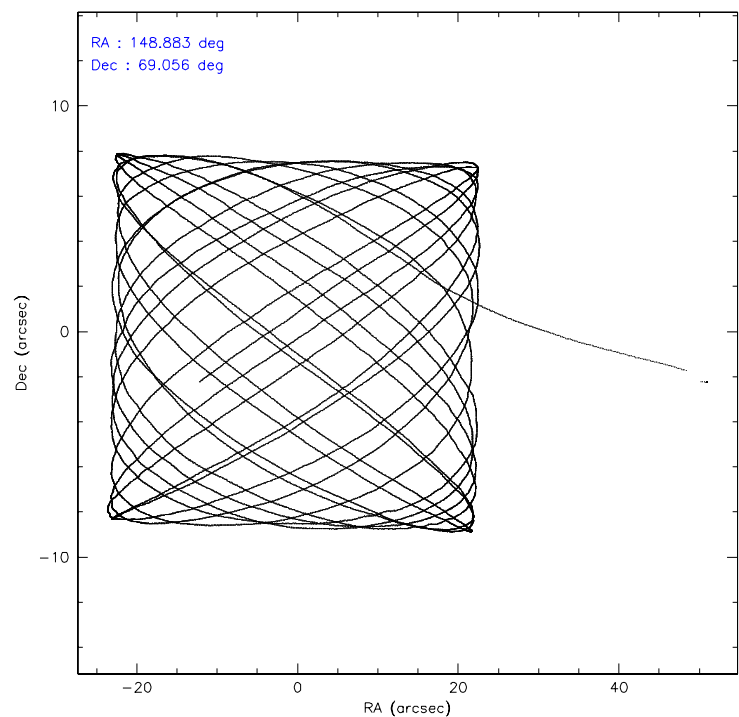
	ccd 2	ccd 3	ccd 5	ccd 6	ccd 7	ccd 8
level 1 events	115351	110458	173455	116713	173920	137418
rejected events	83064	78642	83099	81347	86880	89616
rejected %	72%	71%	47%	69%	49%	65%

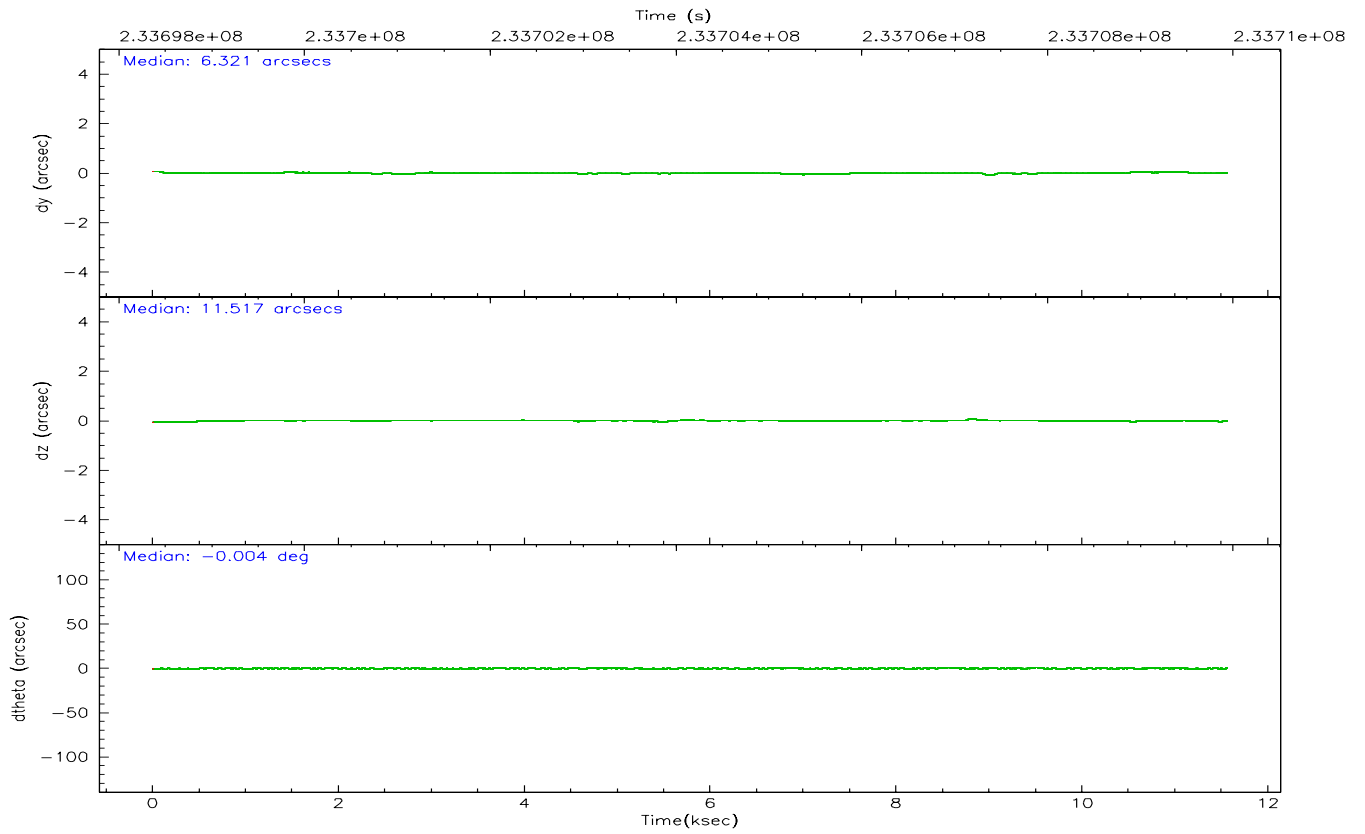
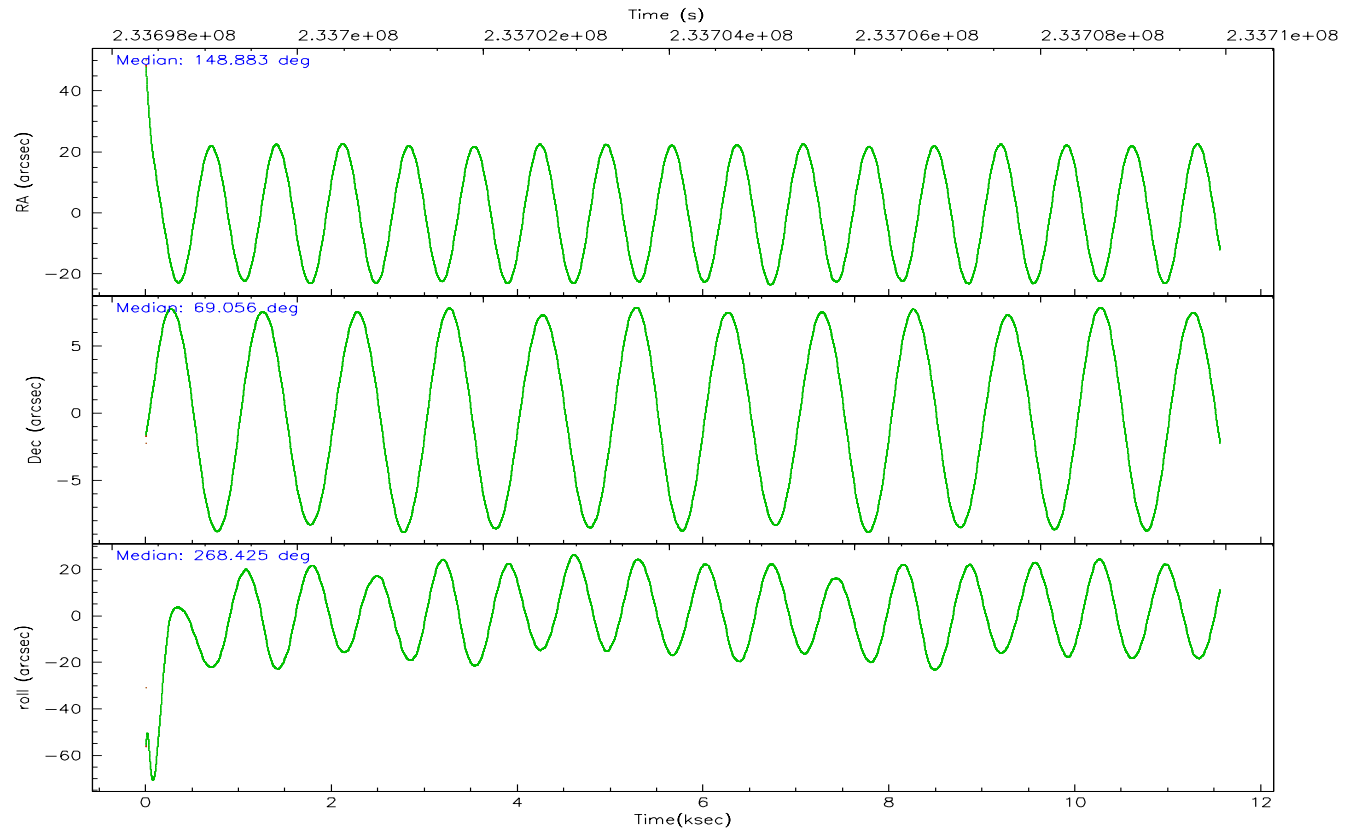
	ccd 2	ccd 3	ccd 5	ccd 6	ccd 7	ccd 8
grade 0 events	22305	21677	8527	23647	7521	26243
	19%	19%	4%	20%	4%	19%
grade 1 events	163	171	167	150	150	159
	0%	0%	0%	0%	0%	0%
grade 2 events	4194	4004	29043	5053	19942	7932
	3%	3%	16%	4%	11%	5%
grade 3 events	1740	1778	2412	1848	4803	3482
	1%	1%	1%	1%	2%	2%
grade 4 events	1728	1814	2098	1864	4601	3218
	1%	1%	1%	1%	2%	2%
grade 5 events	3672	4064	6794	4238	8613	5606
	3%	3%	3%	3%	4%	4%
grade 6 events	2694	2858	50062	3420	51681	7731
	2%	2%	28%	2%	29%	5%
grade 7 events	78855	74092	74352	76493	76609	83047
	68%	67%	42%	65%	44%	60%

2.2 Compared Parameters

Parameter	Planned	Actual	Parameter	Planned	Actual
Instrument	ACIS	ACIS	Obspar format version number	6	6
Detector	ACIS-235678	ACIS-235678	Obspar file type	PREDICTED	ACTUAL
Grating	NONE	NONE	Obspar update status	NONE	UPDATED
Data mode	FAINT	FAINT	On-chip summing requested	N	N
Observation mode	POINTING	POINTING	Subarray requested	NONE	NONE
Pointing RA	148.845629	148.8829479635156	Alternating exposures requested	N	N
Pointing Dec	69.079607	69.05591381060529	Primary exposure time	0.000000	3.2
Pointing Roll	268.307536	268.4293616619145			
SIM focus pos (mm)	-0.684267	-0.6828225247311905			
SIM defocus (mm)	0	0.001444936568705701			
SIM translation stage pos (mm)	-190.132523	-190.1425803651734			
SIM translation stage offset (mm)	0	0.01005778216563158			
Observation start time	233698550.184000	233697324.65363			
Observation start date	2005-05-28T20:14:46	2005-05-28T19:55:24			
Observation end time	233709932.184000	233710156.11672			
Observation end date	2005-05-28T23:24:28	2005-05-28T23:29:16			
Read mode	TIMED	TIMED			

2.3 Aspect



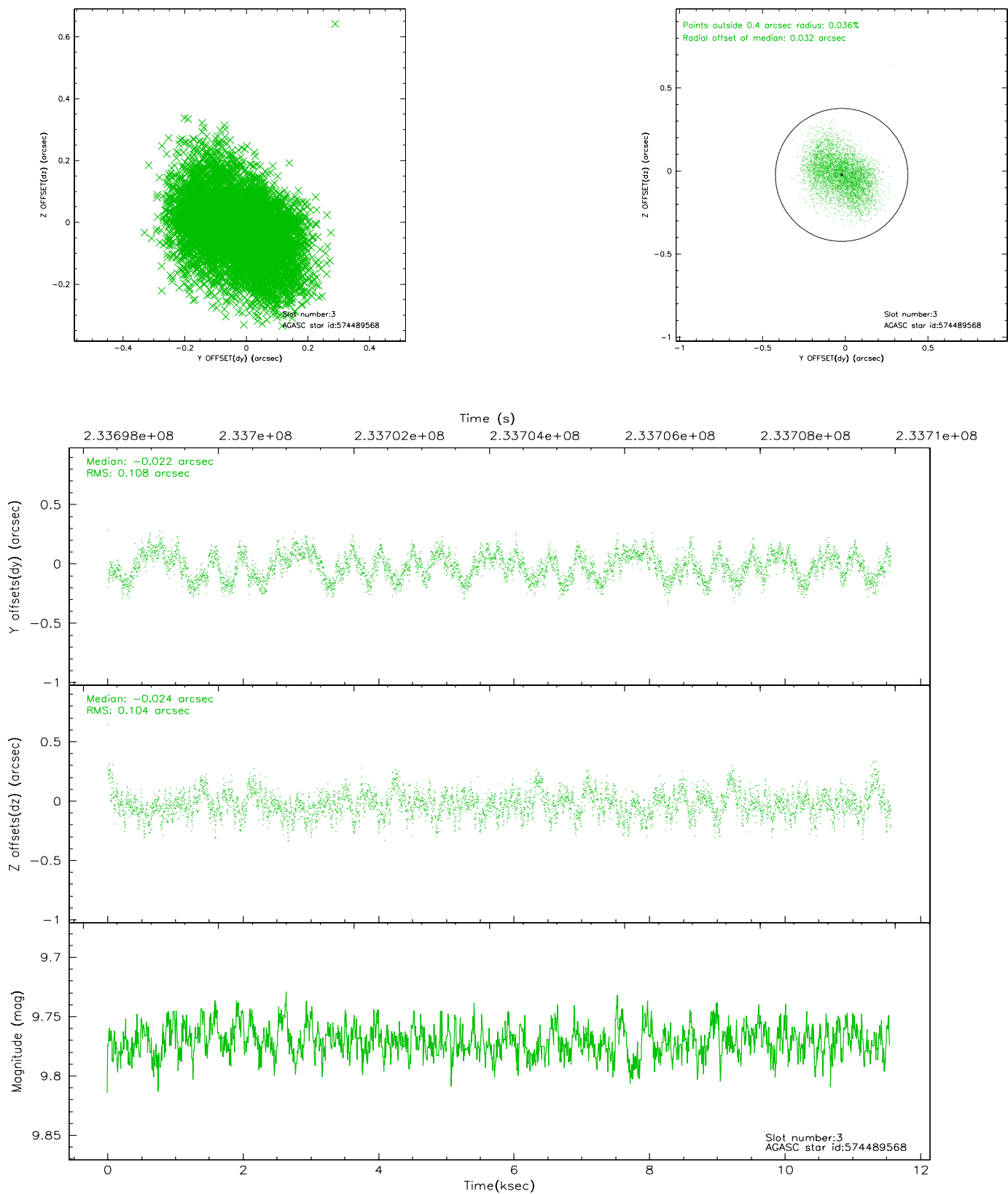


Slot Statistics

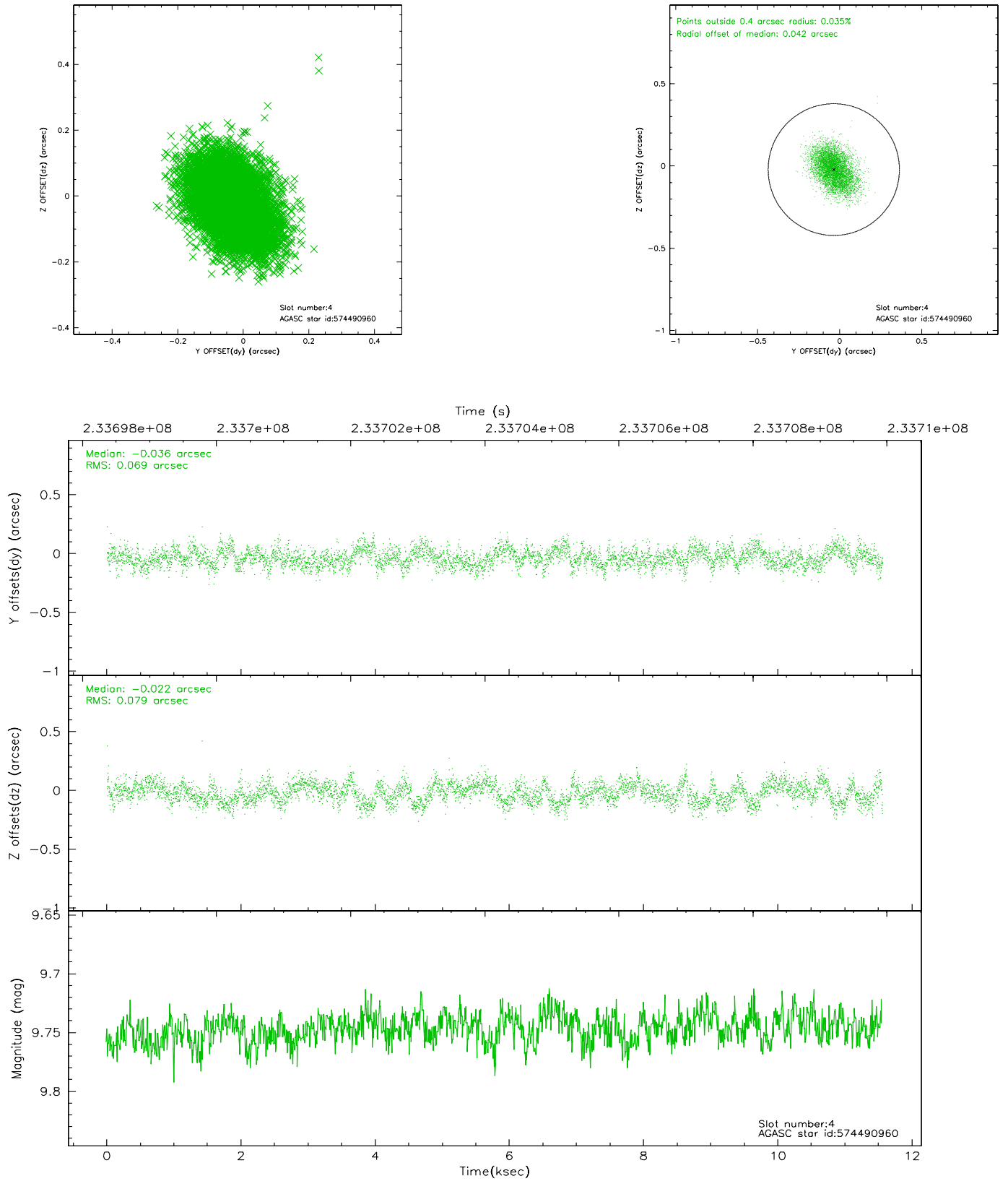
slot	status	id	mag	n_pts	med_dy	med_dz	dr1	dr2	ra	dec	mean_y	mean_z
0	FID	ACIS-S-2	7.10	2820	-0.048	-0.011	0.007	0.011	0.000000	0.000000	-759.09	-1732.77
1	FID	ACIS-S-4	7.21	2820	0.053	0.026	0.005	0.008	0.000000	0.000000	2154.08	175.32
2	FID	ACIS-S-5	7.23	2819	-0.037	-0.006	0.006	0.010	0.000000	0.000000	-1811.37	169.43
3	GUIDE	574489568	9.77	5633	-0.022	-0.024	0.164	0.251	147.223974	69.438157	-1256.21	-2088.07
4	GUIDE	574490960	9.75	5637	-0.036	-0.022	0.112	0.181	148.185918	69.658768	-2063.70	-887.34
5	GUIDE	574491280	9.35	5635	0.006	0.012	0.087	0.142	148.611567	69.450135	-1324.46	-335.69
6	GUIDE	574500920	10.11	5617	0.068	-0.046	0.139	0.230	147.014605	68.742334	1249.11	-2353.45
7	GUIDE	574495368	10.41	5612	-0.014	0.088	0.183	0.300	150.568534	69.409286	-1280.63	2143.93

2.4 Star Slots

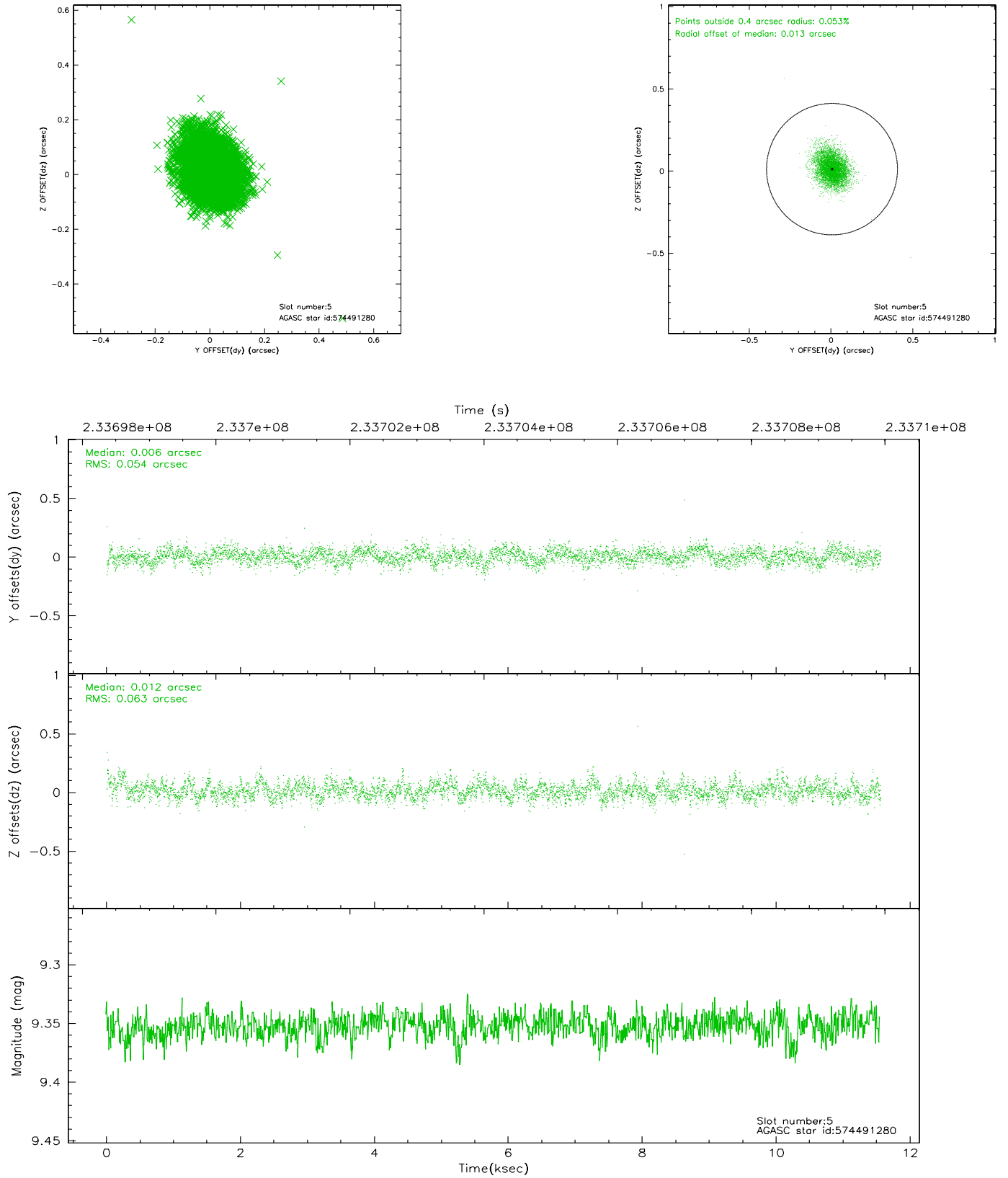
2.4.1 Slot 3



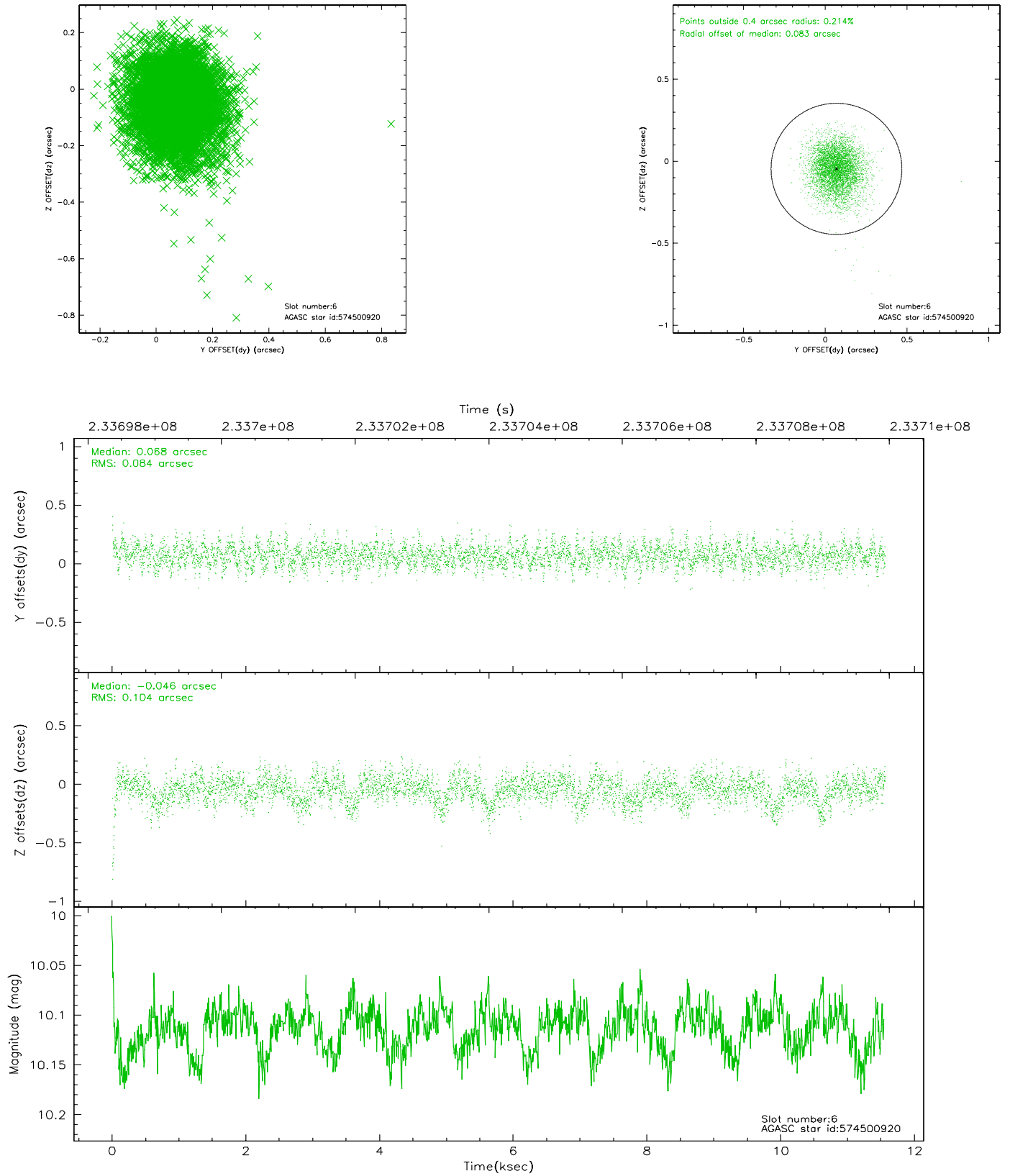
2.4.2 Slot 4



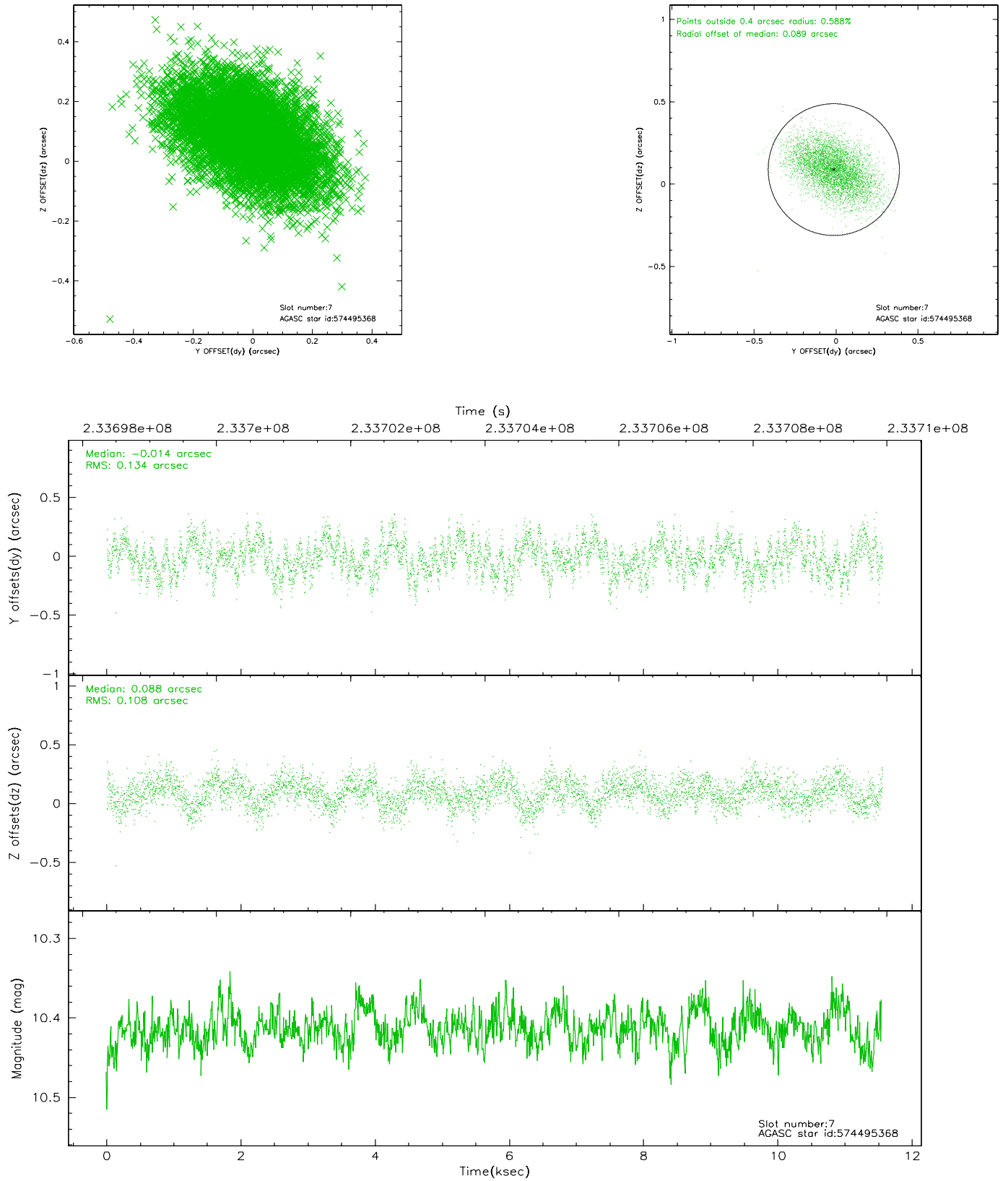
2.4.3 Slot 5



2.4.4 Slot 6

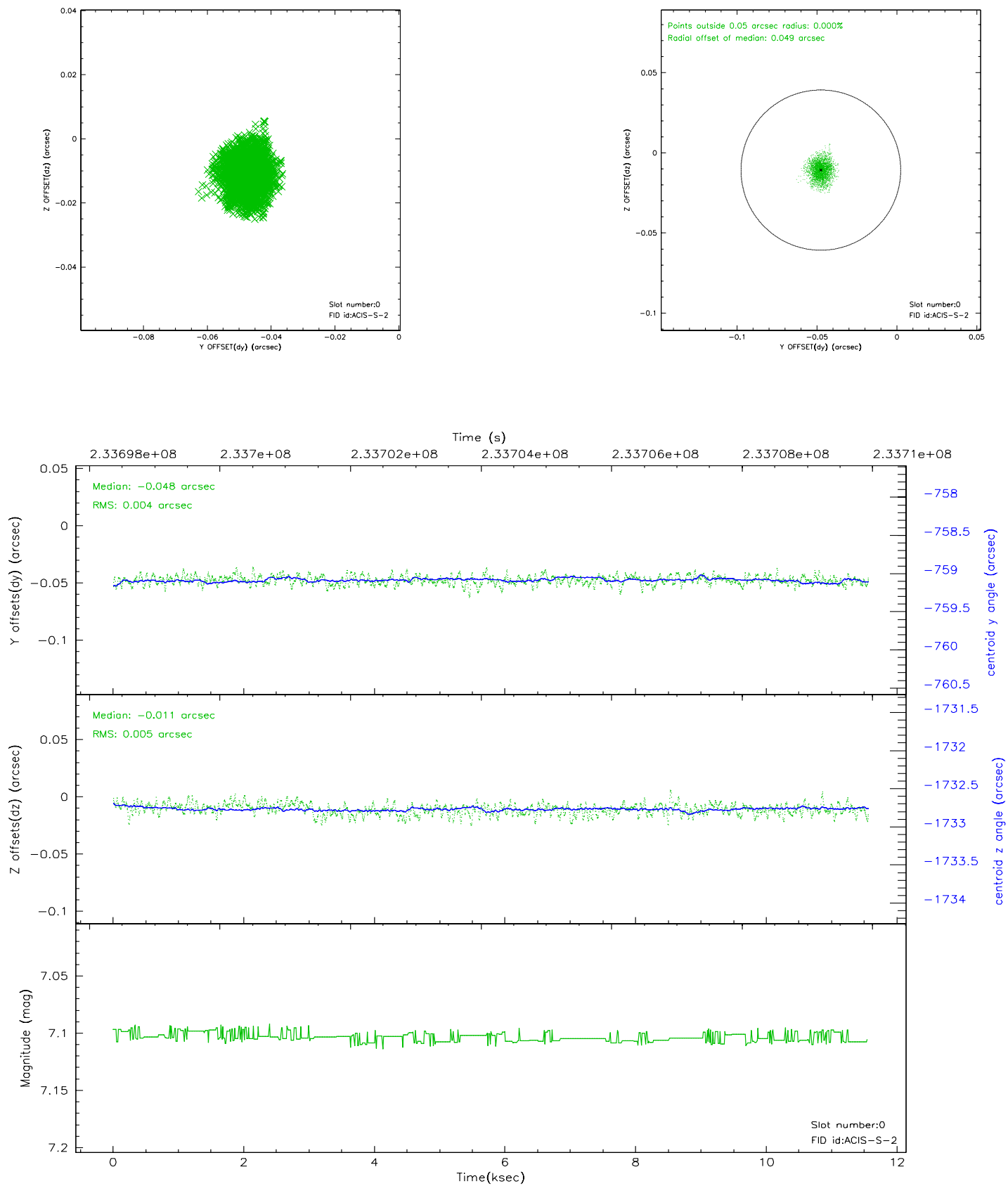


2.4.5 Slot 7

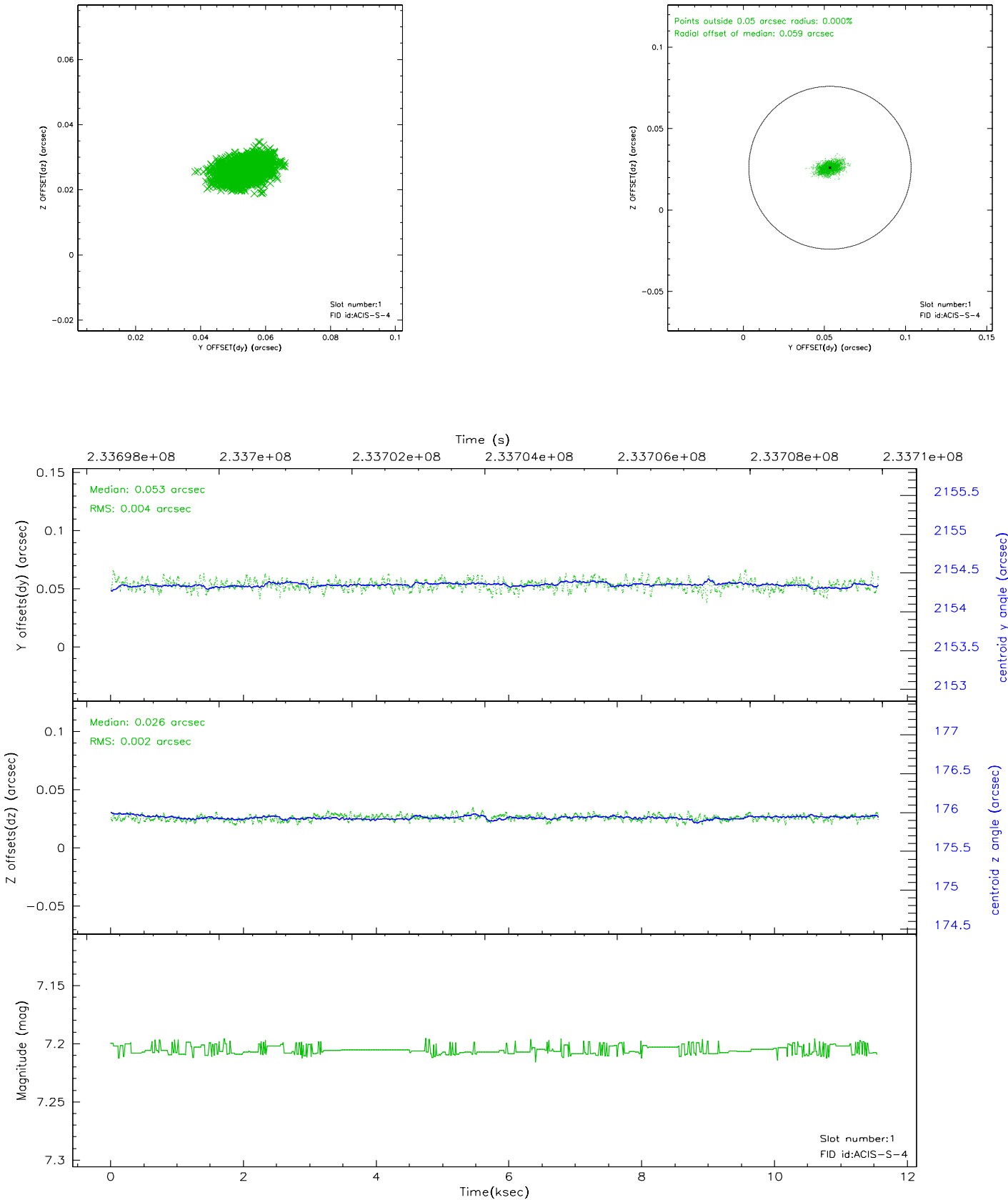


2.5 FID Slots

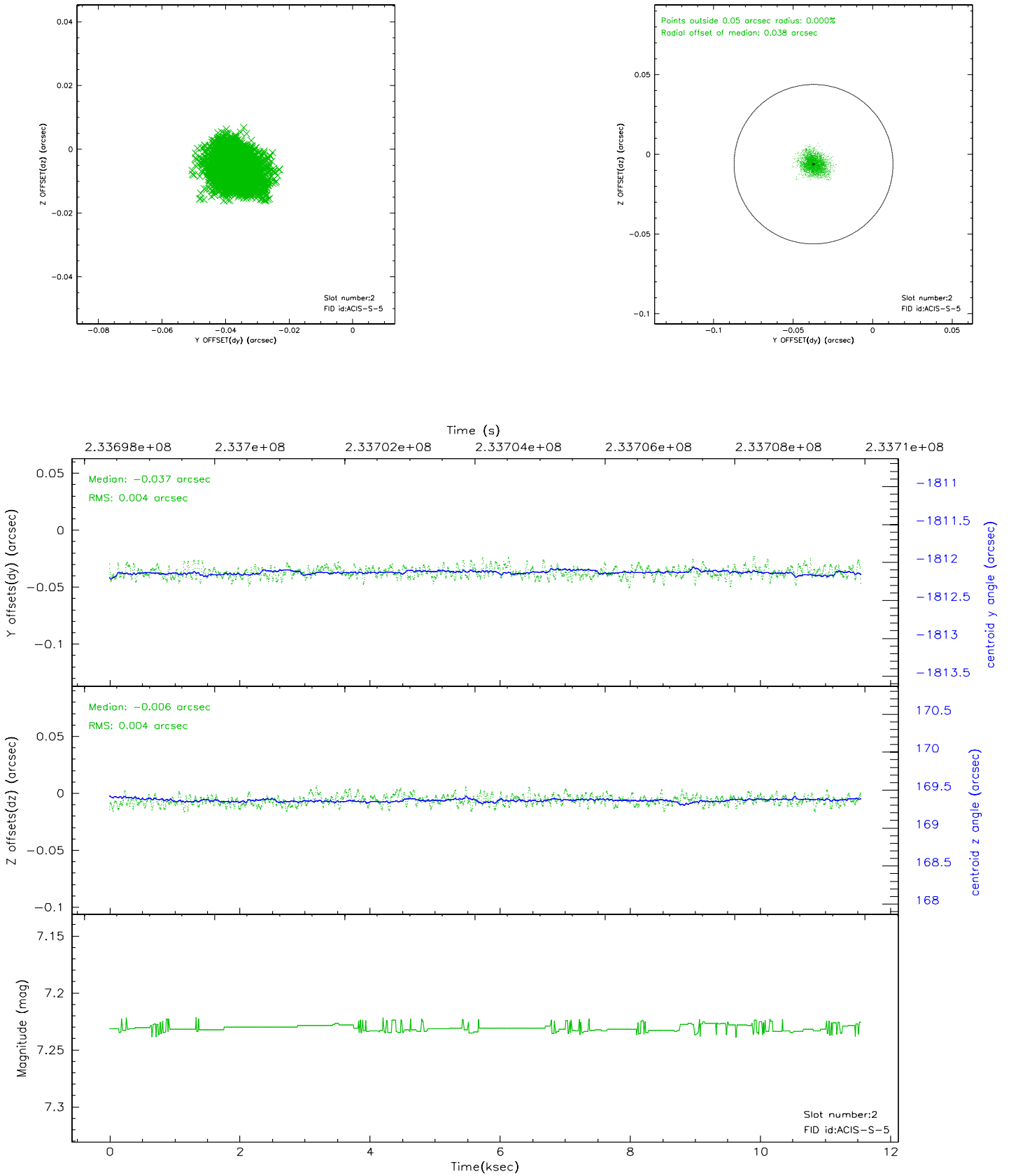
2.5.1 Slot 0



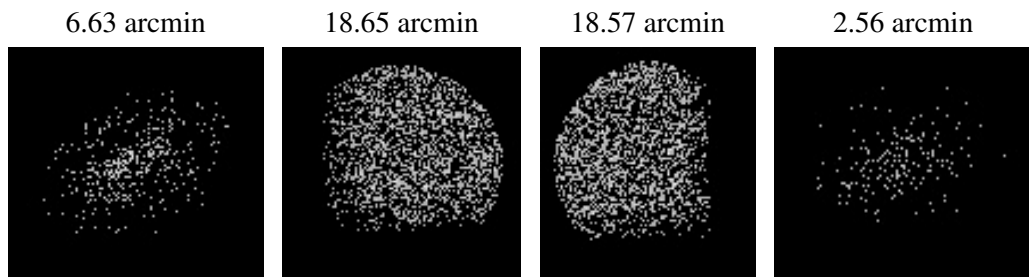
2.5.2 Slot 1



2.5.3 Slot 2



3 Point Sources



A Summary

A.1 Status

V&V Scientist	Jen Lauer
V&V Date (YYYY-MM-DD)	2006.03.08
V&V Edition	1
V&V Disposition and Status	OK
V&V Charge Time	11.55199

A.2 Comments

Preferred roll not met. Monitoring constraint met.