

# V&V Reference Report

## L2 ASCDS Version : 8.4.3

Observation 59306 - L2 Version 2  
Chandra X-Ray Center

L2 Processing Date : Mar 16 2012

## Contents

<b>1</b>	<b>Front</b>	<b>2</b>
<b>2</b>	<b>OBI</b>	<b>3</b>
2.1	OBI . . . . .	3
2.1.1	Images . . . . .	3
2.1.2	Bias . . . . .	3
2.1.3	Parameters . . . . .	4
2.1.4	Events . . . . .	4
2.2	Compared Parameters . . . . .	5
2.3	Star Slots . . . . .	6
2.4	FID Slots . . . . .	6
<b>A</b>	<b>Summary</b>	<b>7</b>
A.1	Status . . . . .	7
A.2	Comments . . . . .	7

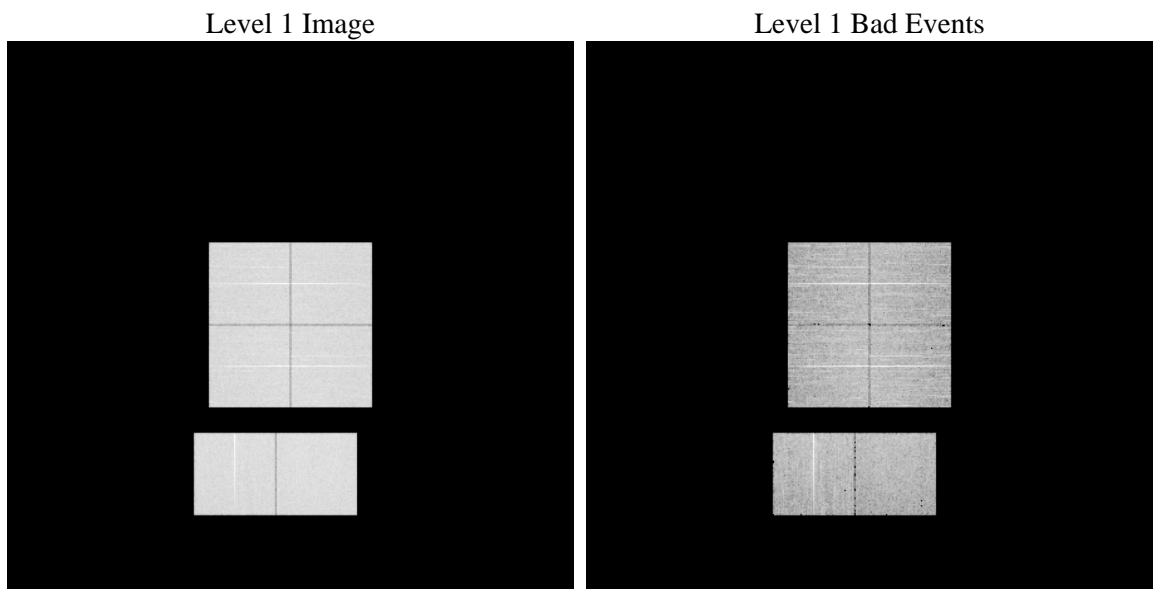
# 1 Front

seq_num	&#160	Sequence number
obs_id	59306	Observation id
title	ACIS-012367 diagnostics	Proposal title
observer	CHANDRA engineering request/realtime commanding	Principal investig
object	&#160	Source name
dtcycle	0	&#160
cycle	P	events from which exps? Prim/Second/Both
ra_targ	0.0	Observer's specified target RA [deg]
dec_targ	0.0	Observer's specified target Dec [deg]
ra_nom	80.471228766516	Nominal RA [deg]
dec_nom	33.014385181261	Nominal Dec [deg]
roll_nom	112.47075831481	Nominal Roll [deg]
revision	2	Processing version of data
ontime	8278.3999691606	Sum of GTIs [s]
livetime	8173.573884097	Livetime [s]
ontime0	8278.3999691606	Sum of GTIs [s]
ontime1	8275.158988893	Sum of GTIs [s]
ontime2	8278.3999691606	Sum of GTIs [s]
ontime3	8275.1589888632	Sum of GTIs [s]
ontime6	8278.3999691606	Sum of GTIs [s]
ontime7	8278.3999691606	Sum of GTIs [s]
l2events	1035554	Number of level 2 events

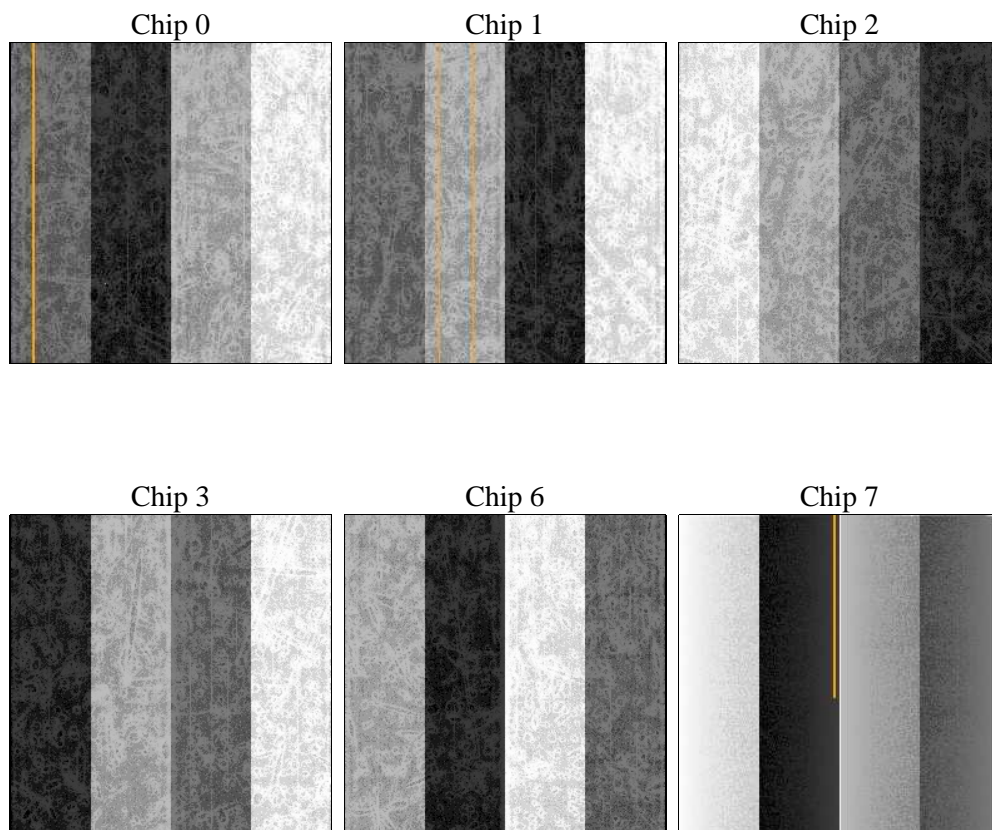
## 2 OBI

### 2.1 OBI

#### 2.1.1 Images



#### 2.1.2 Bias



### 2.1.3 Parameters

obi_num	0	Obi number	sched_exp_time	0.0	[s] Scheduled observation exposure time
ascdsver	8.4.3	Processing system revision	ontime	8278.3999691606	Sum of GTIs [s]
caldsver	4.4.8	&#160	ontime0	8278.3999691606	Sum of GTIs [s]
date	2012-03-17T01:54:09	Date and time of file creation	ontime1	8275.158988893	Sum of GTIs [s]
revision	2	Processing version of data	ontime2	8278.3999691606	Sum of GTIs [s]
			ontime3	8275.1589888632	Sum of GTIs [s]
			ontime6	8278.3999691606	Sum of GTIs [s]
			ontime7	8278.3999691606	Sum of GTIs [s]
			l1events	1465342	Number of level 1 events

### 2.1.4 Events

	ccd 0	ccd 1	ccd 2	ccd 3	ccd 6	ccd 7		ccd 0	ccd 1	ccd 2	ccd 3	ccd 6	ccd 7
level 1 events	236795	234372	242705	242848	249780	258842	grade 0 events	95689	94966	98538	98897	98904	46440
rejected events	61807	59754	65912	66130	65654	55961		40%	40%	40%	40%	39%	17%
rejected %	26%	25%	27%	27%	26%	21%	grade 1 events	584	499	687	640	526	163
								0%	0%	0%	0%	0%	0%
							grade 2 events	30661	31259	29822	30038	32028	44189
								12%	13%	12%	12%	12%	17%
							grade 3 events	11461	11105	11812	11640	11583	19832
								4%	4%	4%	4%	4%	7%
							grade 4 events	11435	11249	11538	11575	11830	19293
								4%	4%	4%	4%	4%	7%
							grade 5 events	3585	3781	3479	3990	3946	9494
								1%	1%	1%	1%	1%	3%
							grade 6 events	25742	26039	25083	24568	29781	73127
								10%	11%	10%	10%	11%	28%
							grade 7 events	57638	55474	61746	61500	61182	46304
								24%	23%	25%	25%	24%	17%

## 2.2 Compared Parameters

Parameter	Planned	Actual	Parameter	Planned	Actual
Instrument	ACIS	ACIS	Obspar format version number	7	7
Detector	ACIS-012367	ACIS-012367	Obspar file type	PREDICTED	ACTUAL
Grating	NONE	NONE	Obspar update status	NONE	UPDATED
Data mode	FAINT	FAINT	On-chip summing requested	N	N
Observation mode	SECONDARY	SECONDARY	Subarray requested	NONE	NONE
[deg] Pointing RA	0	80.47122876651561	Alternating exposures requested	N	N
[deg] Pointing Dec	0	33.01438518126105	[s] Primary exposure time	3.2	3.2
[deg] Pointing Roll	0.0	112.47075831481			
[mm] SIM focus pos	-0.782348	-0.7809083437167272			
[mm] SIM defocus	0	0.7524282956875696			
[mm] SIM translation stage pos	-233.592463	250.466033080201			
[mm] SIM translation stage offset	0	-0.01005468664627074			
[s] Observation start time (MET)	248596633.599741	248596632.57475			
Observation start date	2005-11-17T06:37:14	2005-11-17T06:37:12			
[s] Observation end time (MET)	248619636.650803	248619635.62581			
Observation end date	2005-11-17T13:00:37	2005-11-17T13:00:35			
Read mode	TIMED	TIMED			

## 2.3 Star Slots

## 2.4 FID Slots

## A Summary

### A.1 Status

V&V Scientist	Beth Sundheim
V&V Date (YYYY-MM-DD)	2012.03.18
V&V Edition	1
V&V Disposition and Status	OK
V&V Charge Time	8.2783999691606

### A.2 Comments