

# V&V Reference Report

## L2 ASCDS Version : 8.4.4

Observation 58386 - L2 Version 2  
Chandra X-Ray Center

L2 Processing Date : Apr 25 2012

## Contents

<b>1</b>	<b>Front</b>	<b>2</b>
<b>2</b>	<b>OBI</b>	<b>3</b>
2.1	OBI . . . . .	3
2.1.1	Images . . . . .	3
2.1.2	Bias . . . . .	3
2.1.3	Parameters . . . . .	4
2.1.4	Events . . . . .	4
2.2	Compared Parameters . . . . .	5
2.3	Star Slots . . . . .	6
2.4	FID Slots . . . . .	6
<b>A</b>	<b>Summary</b>	<b>7</b>
A.1	Status . . . . .	7
A.2	Comments . . . . .	7

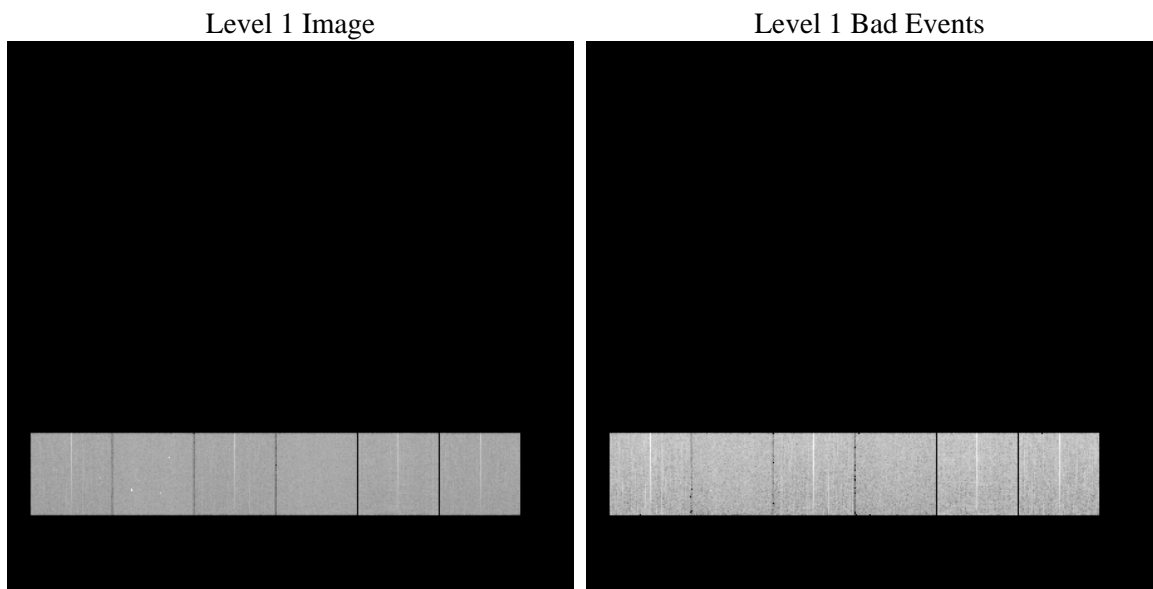
# 1 Front

seq_num	&#160	Sequence number
obs_id	58386	Observation id
title	ACIS-456789 diagnostics	Proposal title
observer	CHANDRA engineering request/realtime commanding	Principal investig
object	&#160	Source name
dtcycle	0	&#160
cycle	P	events from which exps? Prim/Second/Both
ra_targ	0.0	Observer's specified target RA [deg]
dec_targ	0.0	Observer's specified target Dec [deg]
ra_nom	108.00315211069	Nominal RA [deg]
dec_nom	-8.0290896204327	Nominal Dec [deg]
roll_nom	240.06738679421	Nominal Roll [deg]
revision	2	Processing version of data
ontime	7794.0600092411	Sum of GTIs [s]
livetime	7695.3669283846	Livetime [s]
ontime4	7793.9368892312	Sum of GTIs [s]
ontime5	7794.0189692378	Sum of GTIs [s]
ontime6	7793.9779292345	Sum of GTIs [s]
ontime7	7794.0600092411	Sum of GTIs [s]
ontime8	7793.8958492279	Sum of GTIs [s]
ontime9	7794.1010492444	Sum of GTIs [s]
l2events	727473	Number of level 2 events

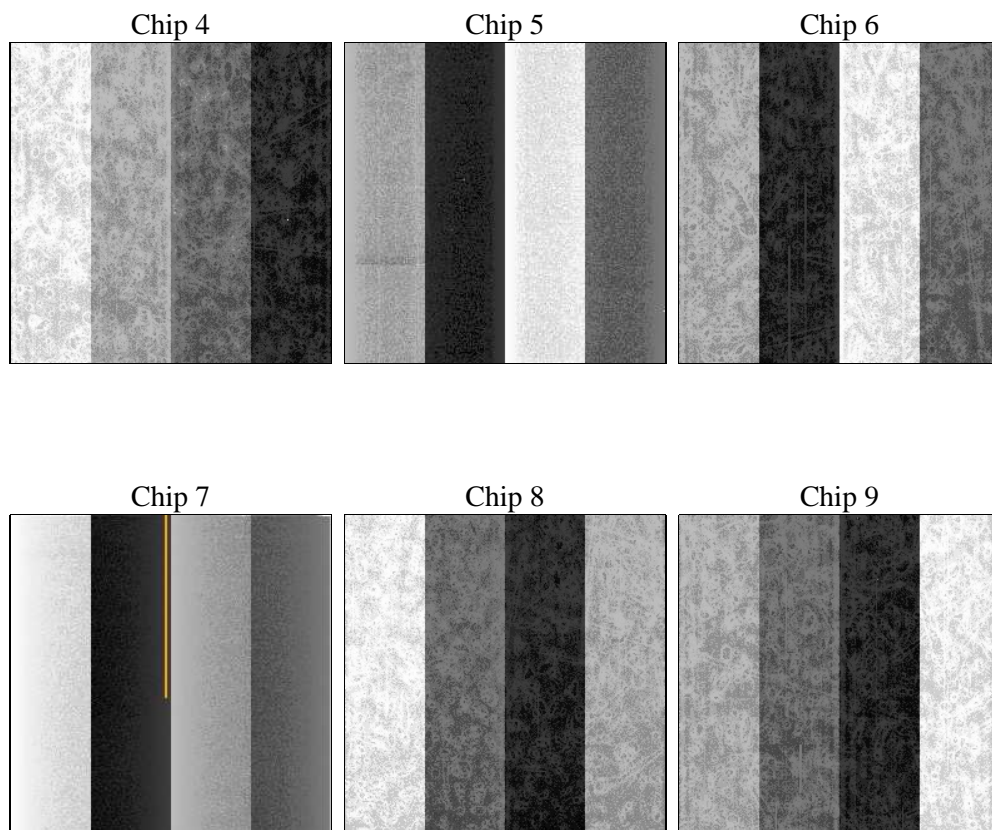
## 2 OBI

### 2.1 OBI

#### 2.1.1 Images



#### 2.1.2 Bias



### 2.1.3 Parameters

obi_num	0	Obi number	sched_exp_time	0.0	[s] Scheduled observation exposure time
ascdsver	8.4.4	Processing system revision	ontime	7794.0600092411	Sum of GTIs [s]
caldsver	4.4.9	&#160	ontime4	7793.9368892312	Sum of GTIs [s]
date	2012-04-25T09:41:00	Date and time of file creation	ontime5	7794.0189692378	Sum of GTIs [s]
revision	2	Processing version of data	ontime6	7793.9779292345	Sum of GTIs [s]
			ontime7	7794.0600092411	Sum of GTIs [s]
			ontime8	7793.8958492279	Sum of GTIs [s]
			ontime9	7794.1010492444	Sum of GTIs [s]
			l1events	1204886	Number of level 1 events

### 2.1.4 Events

	ccd 4	ccd 5	ccd 6	ccd 7	ccd 8	ccd 9		ccd 4	ccd 5	ccd 6	ccd 7	ccd 8	ccd 9
level 1 events	191017	209146	193687	209631	209838	191567	grade 0 events	65687	25371	65438	31713	69479	64382
rejected events	76107	64968	70971	60261	76341	73097		34%	12%	33%	15%	33%	33%
rejected %	39%	31%	36%	28%	36%	38%	grade 1 events	631	276	386	150	466	460
								0%	0%	0%	0%	0%	0%
							grade 2 events	18063	53051	21518	32539	23872	20432
								9%	25%	11%	15%	11%	10%
							grade 3 events	7859	7200	7836	14399	9241	7686
								4%	3%	4%	6%	4%	4%
							grade 4 events	7947	7031	7659	14028	9175	7746
								4%	3%	3%	6%	4%	4%
							grade 5 events	4008	9075	4121	10067	5309	4546
								2%	4%	2%	4%	2%	2%
							grade 6 events	15354	51525	20265	56691	21730	18224
								8%	24%	10%	27%	10%	9%
							grade 7 events	71468	55617	66464	50044	70566	68091
								37%	26%	34%	23%	33%	35%

## 2.2 Compared Parameters

Parameter	Planned	Actual
Instrument	ACIS	ACIS
Detector	ACIS-456789	ACIS-456789
Grating	NONE	NONE
Data mode	FAINT	FAINT
Observation mode	SECONDARY	SECONDARY
[deg] Pointing RA	0	108.0031521106944
[deg] Pointing Dec	0	-8.029089620432732
[deg] Pointing Roll	0.0	240.0673867942083
[mm] SIM focus pos	-0.684267	-0.6828225247311905
[mm] SIM defocus	0	0.8505141146731063
[mm] SIM translation stage pos	-190.132523	250.466033080201
[mm] SIM translation stage offset	0	-0.01005468664627074
[s] Observation start time (MET)	296077270.079674	296077269.05468
Observation start date	2007-05-20T19:41:10	2007-05-20T19:41:09
[s] Observation end time (MET)	296131191.232249	296131190.20726
Observation end date	2007-05-21T10:39:51	2007-05-21T10:39:50
Read mode	TIMED	TIMED

Parameter	Planned	Actual
Obspar format version number	7	7
Obspar file type	PREDICTED	ACTUAL
Obspar update status	NONE	UPDATED
On-chip summing requested	N	N
Subarray requested	NONE	NONE
Alternating exposures requested	N	N
[s] Primary exposure time	3.2	3.2

## **2.3 Star Slots**

## **2.4 FID Slots**

## A Summary

### A.1 Status

V&V Scientist	Jen Lauer
V&V Date (YYYY-MM-DD)	2012.04.25
V&V Edition	1
V&V Disposition and Status	OK
V&V Charge Time	7.7940600092411

### A.2 Comments