

V&V Reference Report

L2 ASCDS Version : 8.5.1

Observation 5836 - L2 Version 3
Chandra X-Ray Center

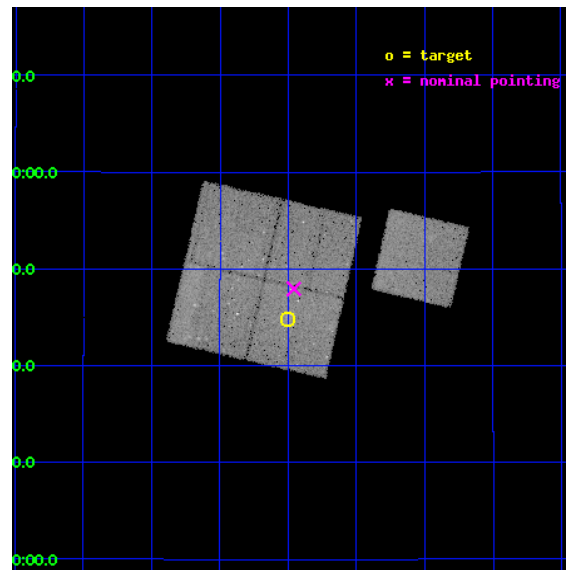
L2 Processing Date : Dec 17 2012

Contents

1	Front	2
2	OBI	3
2.1	OBI	3
2.1.1	Images	3
2.1.2	Bias	3
2.1.3	Parameters	4
2.1.4	Events	4
2.2	Compared Parameters	5
2.3	Aspect	6
2.4	Star Slots	9
2.4.1	Slot 3	9
2.4.2	Slot 4	10
2.4.3	Slot 5	11
2.4.4	Slot 6	12
2.4.5	Slot 7	13
2.5	FID Slots	14
2.5.1	Slot 0	14
2.5.2	Slot 1	15
2.5.3	Slot 2	16
A	Summary	17
A.1	Status	17
A.2	Comments	17

1 Front

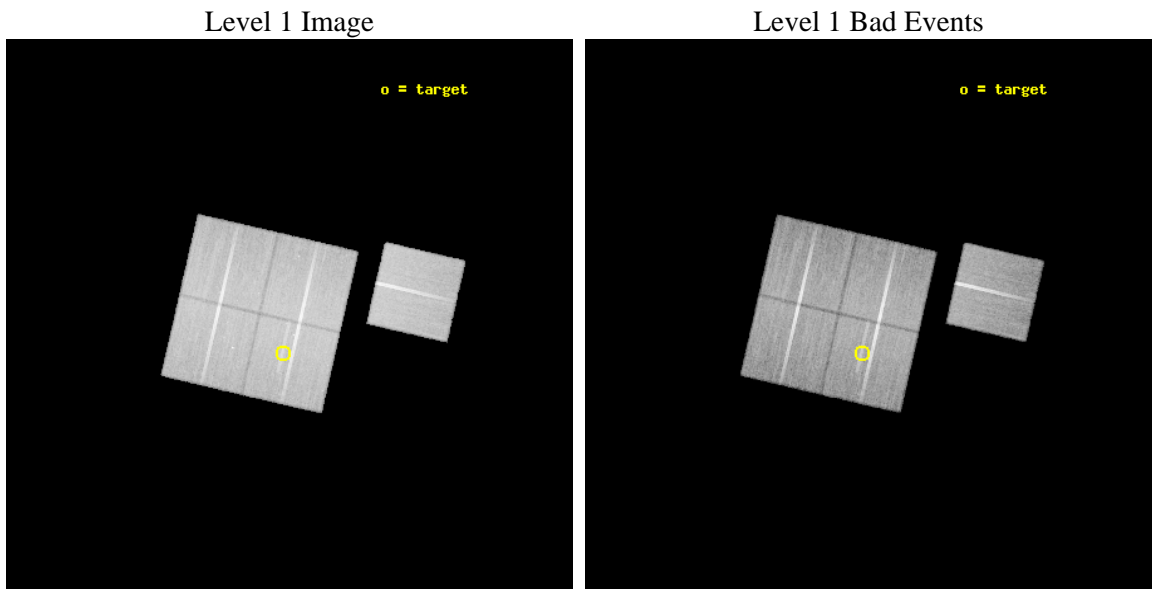
seq_num	800545	Sequence number
obs_id	5836	Observation id
title	Supplement to Chandra observations of high-redshift clusters of galaxies from the 400 Square Degree ROSAT PSPC survey	Proposal title
observer	Dr. Stephen Murray	Principal investigator
object	cl1117+1744	Source name
dtcycle	0	
cycle	P	events from which exps? Prim/Second/Both
ra_targ	169.375417	Observer's specified target RA [deg]
dec_targ	17.745833	Observer's specified target Dec [deg]
ra_nom	169.36459911509	Nominal RA [deg]
dec_nom	17.799165842324	Nominal Dec [deg]
roll_nom	103.02568978297	Nominal Roll [deg]
revision	3	Processing version of data
ontime	45758.212616175	Sum of GTIs [s]
livetime	45160.347881639	Livetime [s]
ontime0	45754.948426306	Sum of GTIs [s]
ontime1	45773.835407704	Sum of GTIs [s]
ontime2	45755.030506372	Sum of GTIs [s]
ontime3	45758.212616175	Sum of GTIs [s]
ontime6	45770.612347454	Sum of GTIs [s]
l2events	119868	Number of level 2 events



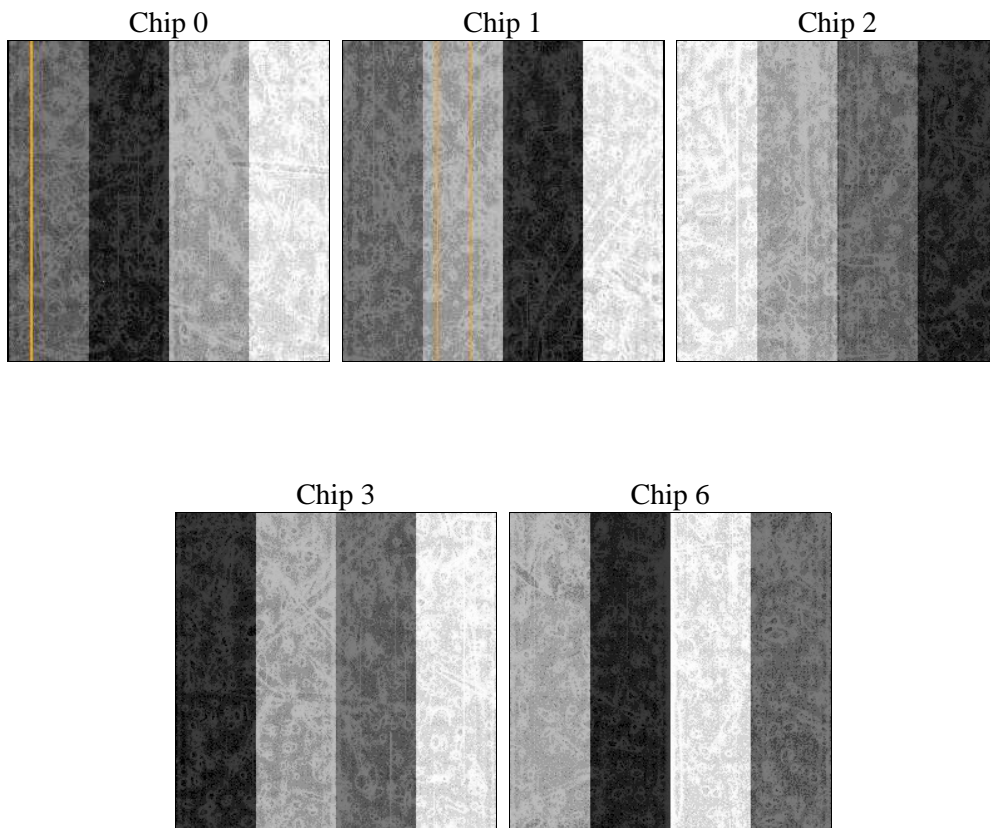
2 OBI

2.1 OBI

2.1.1 Images



2.1.2 Bias



2.1.3 Parameters

obi_num	0	Obi number	sched_exp_time	46000.000000	[s] Scheduled observation exposure time
ascdsver	8.5.1	Processing system revision	ontime	45758.212616175	Sum of GTIs [s]
caldbver	4.5.5	 	ontime0	45754.948426306	Sum of GTIs [s]
date	2012-12-17T19:17:55	Date and time of file creation	ontime1	45773.835407704	Sum of GTIs [s]
revision	3	Processing version of data	ontime2	45755.030506372	Sum of GTIs [s]
			ontime3	45758.212616175	Sum of GTIs [s]
			ontime6	45770.612347454	Sum of GTIs [s]
			l1events	1379773	Number of level 1 events

2.1.4 Events

	ccd 0	ccd 1	ccd 2	ccd 3	ccd 6		ccd 0	ccd 1	ccd 2	ccd 3	ccd 6
level 1 events	265649	266099	290294	280543	277188	grade 0 events	9832	12073	9972	10537	9781
rejected events	237331	233913	262531	252730	248945		3%	4%	3%	3%	3%
rejected %	89%	87%	90%	90%	89%	grade 1 events	126	132	140	140	125
							0%	0%	0%	0%	0%
						grade 2 events	6489	6747	6573	5746	6081
							2%	2%	2%	2%	2%
						grade 3 events	3425	3510	3019	3087	3164
							1%	1%	1%	1%	1%
						grade 4 events	3045	3517	2947	3162	3128
							1%	1%	1%	1%	1%
						grade 5 events	10068	10689	9706	11193	10899
							3%	4%	3%	3%	3%
						grade 6 events	5530	6341	5255	5286	6090
							2%	2%	1%	1%	2%
						grade 7 events	227134	223090	252682	241392	237920
							85%	83%	87%	86%	85%

2.2 Compared Parameters

Parameter	Planned	Actual	Parameter	Planned	Actual
Instrument	ACIS	ACIS	Obspar format version number	7	7
Detector	ACIS-01236	ACIS-01236	Obspar file type	PREDICTED	ACTUAL
Grating	NONE	NONE	Obspar update status	NONE	UPDATED
Data mode	VFAINT	VFAINT	Number of optional ACIS chips dropped	0	0
Observation mode	POINTING	POINTING	On-chip summing requested	N	N
[deg] Pointing RA	169.384324	169.3645991150901	Subarray requested	NONE	NONE
[deg] Pointing Dec	17.779210	17.79916584232421	Alternating exposures requested	N	N
[deg] Pointing Roll	102.810982	103.0256897829702	[s] Primary exposure time	0.000000	3.1
[mm] SIM focus pos	-0.782348	-0.7809083437167272			
[mm] SIM defocus	0	0.001439871863259334			
[mm] SIM translation stage pos	-225.840463	-225.8458576473255			
[mm] SIM translation stage offset	-7.752	-7.746595355604228			
[s] Observation start time (MET)	224898392.184000	224897173.42888			
Observation start date	2005-02-15T23:45:28	2005-02-15T23:26:13			
[s] Observation end time (MET)	224944392.184000	224946073.61859			
Observation end date	2005-02-16T12:32:08	2005-02-16T13:01:13			
Read mode	TIMED	TIMED			

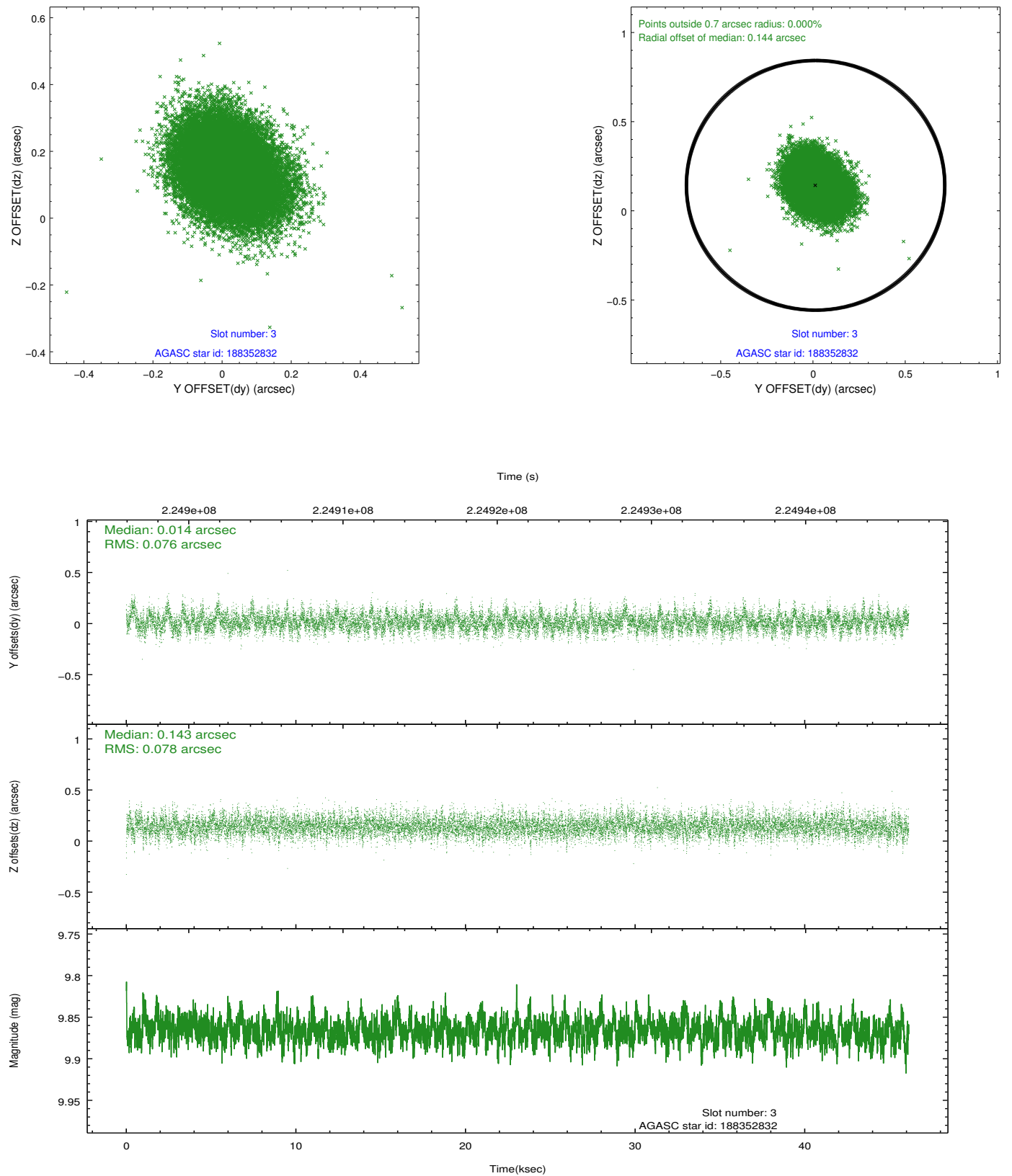
2.3 Aspect

Slot Statistics

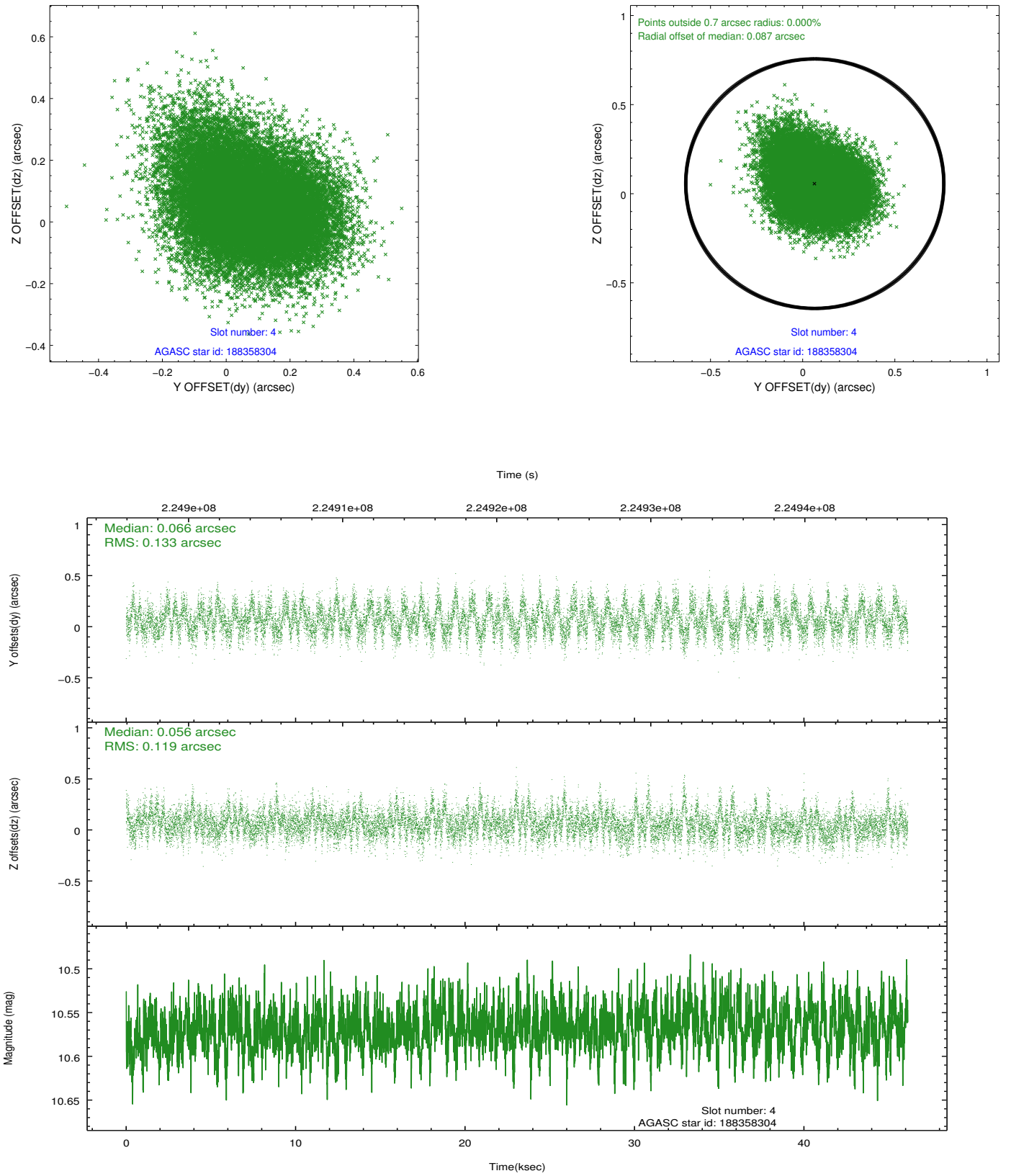
slot	status	id	mag	n_pts	med_dy	med_dz	dr1	dr2	ra	dec	mean_y	mean_z
0	FID	ACIS-I-1	7.23	11252	0.096	-0.084	0.020	0.044	0.000000	0.000000	934.06	-992.54
1	FID	ACIS-I-5	7.22	11251	-0.248	0.079	0.016	0.039	0.000000	0.000000	-1814.39	905.12
2	FID	ACIS-I-6	7.25	11250	0.064	0.072	0.021	0.046	0.000000	0.000000	399.58	1549.60
3	GUIDE	188352832	9.87	22484	0.014	0.143	0.115	0.190	169.850472	18.107090	799.62	-1816.55
4	GUIDE	188358304	10.57	22472	0.066	0.056	0.191	0.307	169.015817	17.939071	842.34	1103.20
5	GUIDE	188362192	7.54	22502	-0.085	0.010	0.071	0.115	170.110288	17.311287	-2190.90	-2060.69
6	GUIDE	188368384	10.04	22485	0.033	-0.150	0.142	0.226	168.918377	17.370042	-1079.57	1887.19
7	GUIDE	188358160	10.32	22472	-0.028	-0.055	0.175	0.284	168.610775	18.068520	1607.56	2349.62

2.4 Star Slots

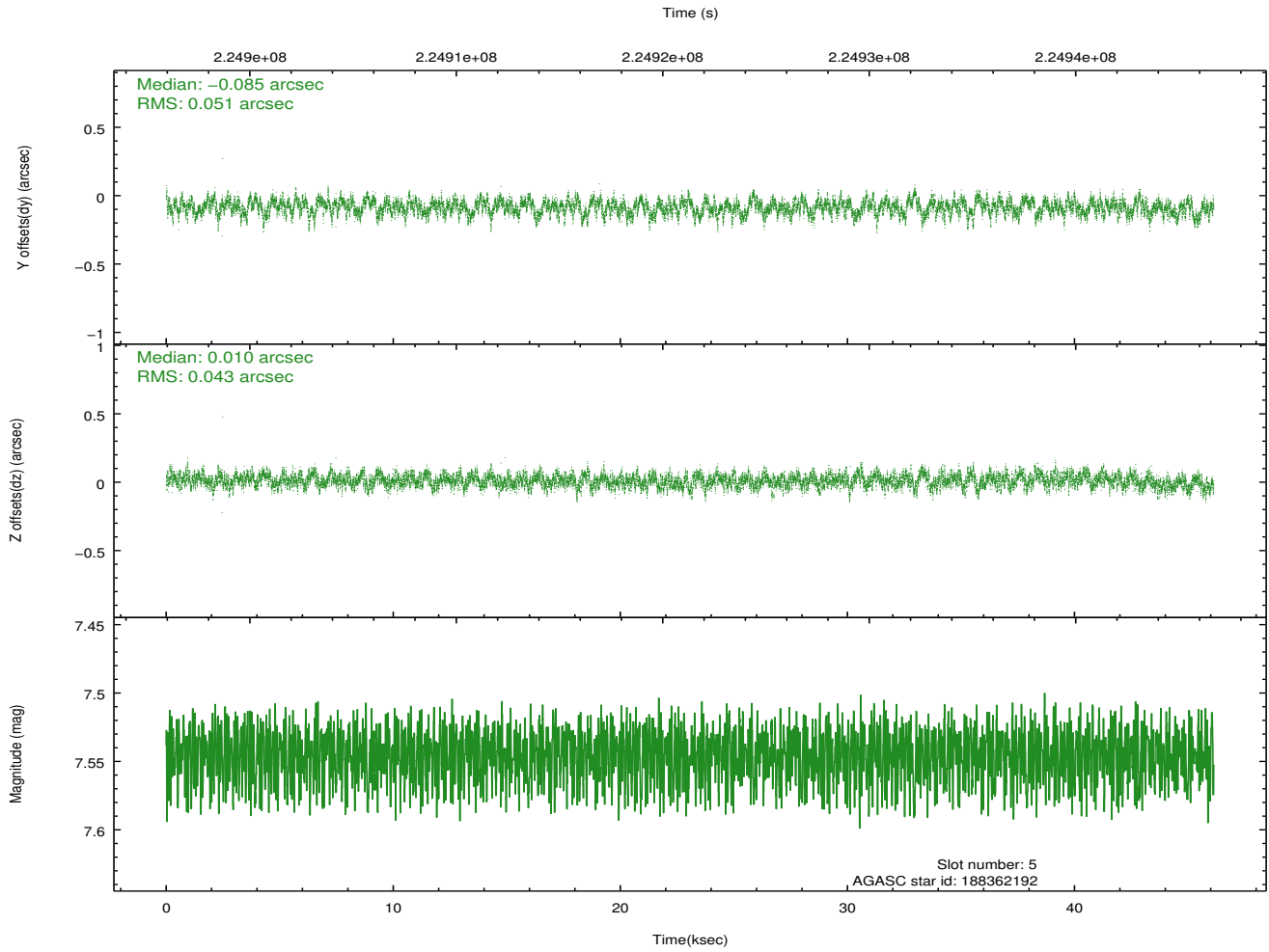
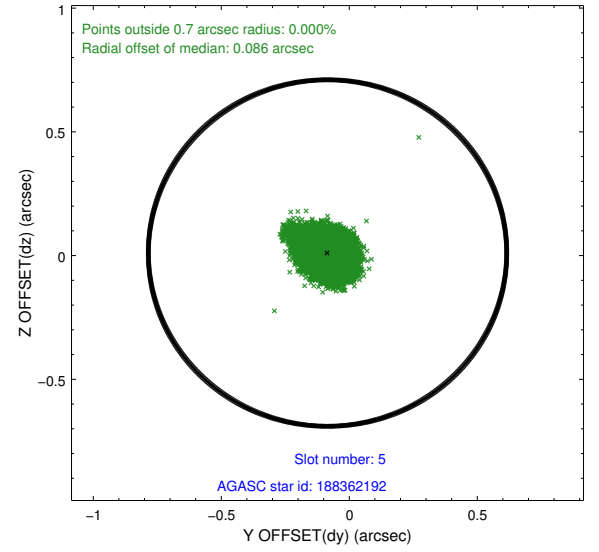
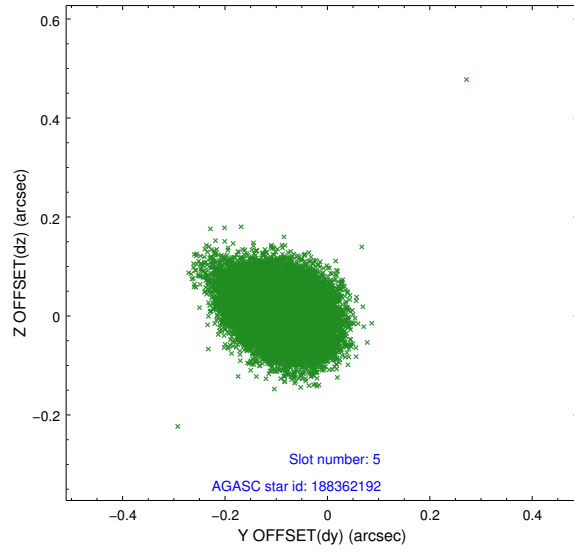
2.4.1 Slot 3



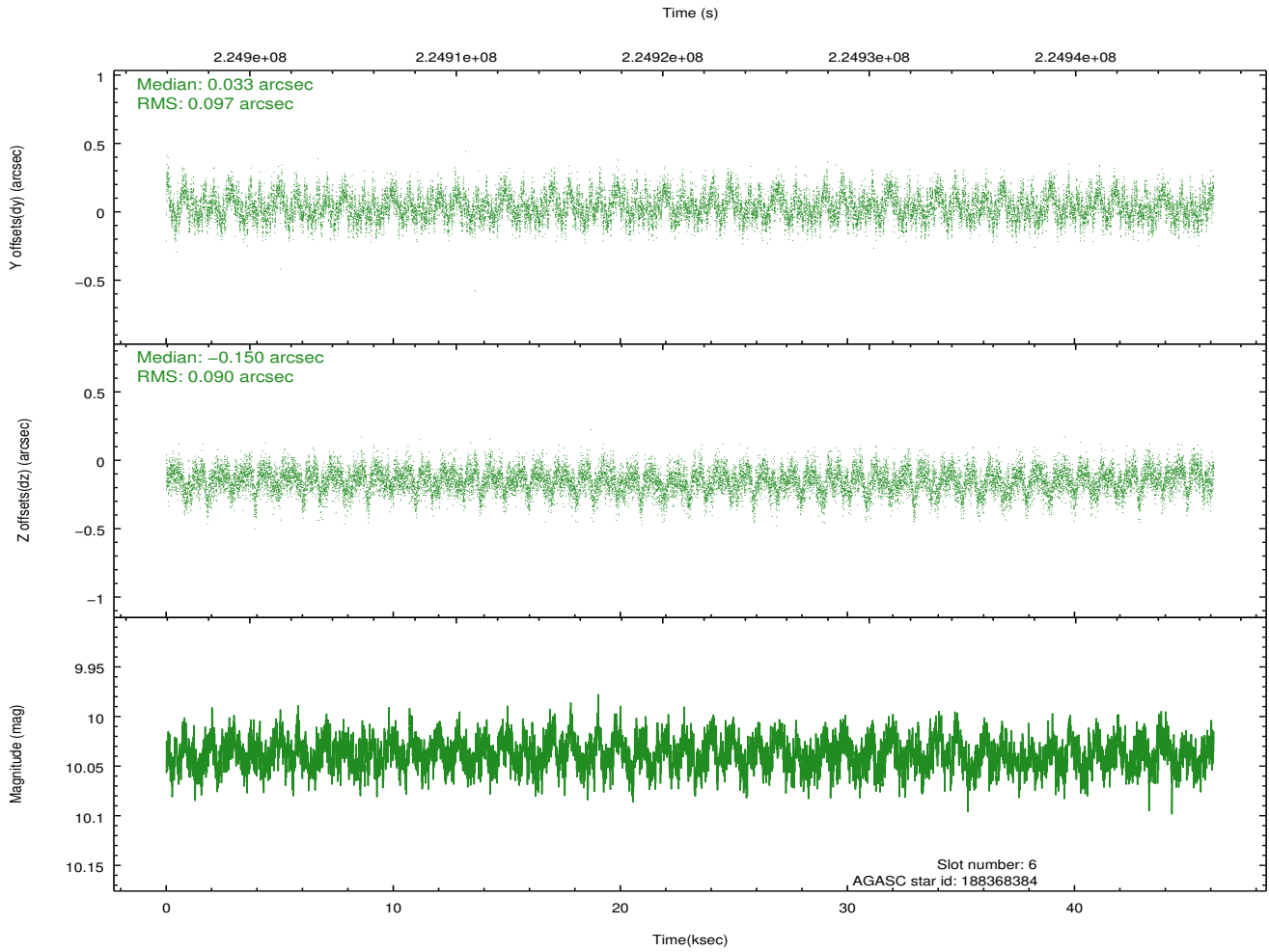
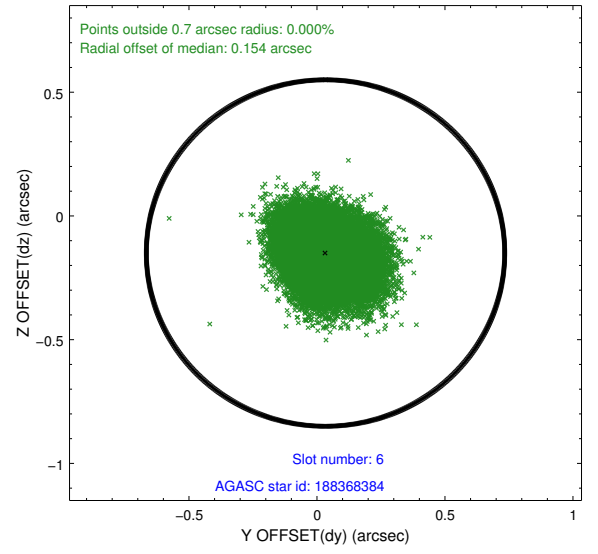
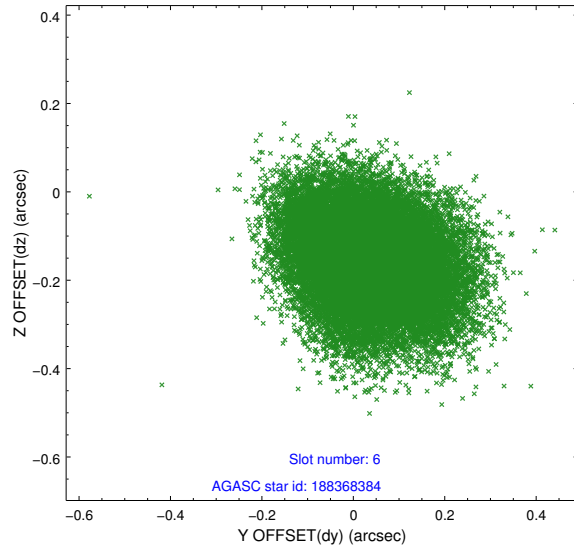
2.4.2 Slot 4



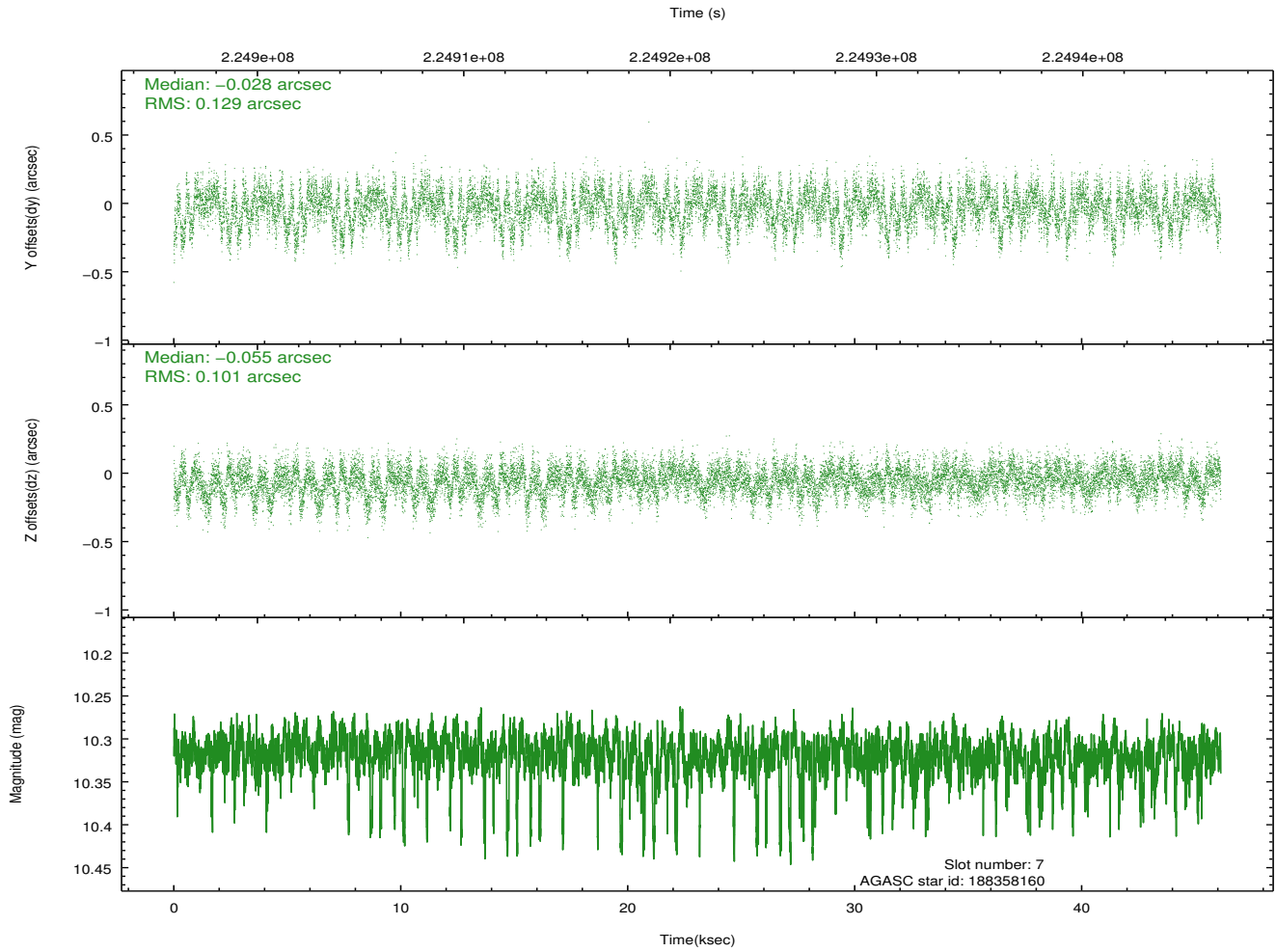
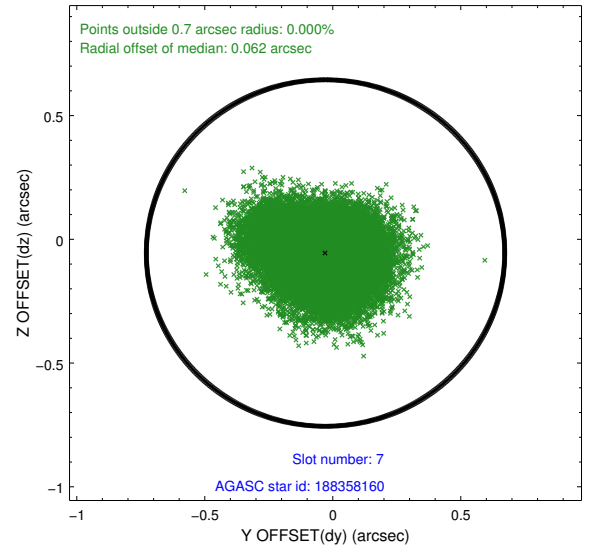
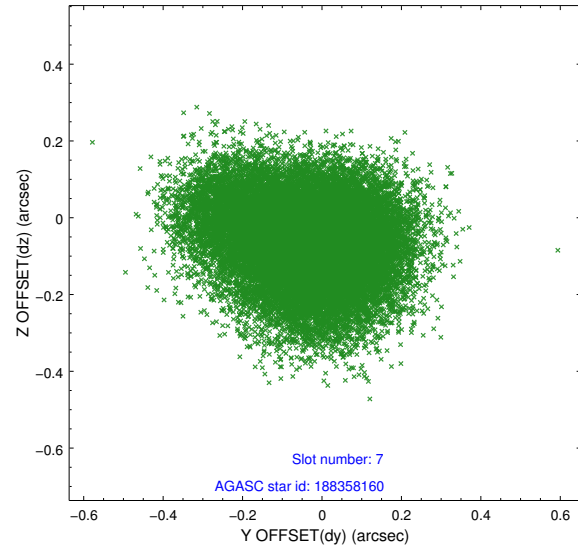
2.4.3 Slot 5



2.4.4 Slot 6

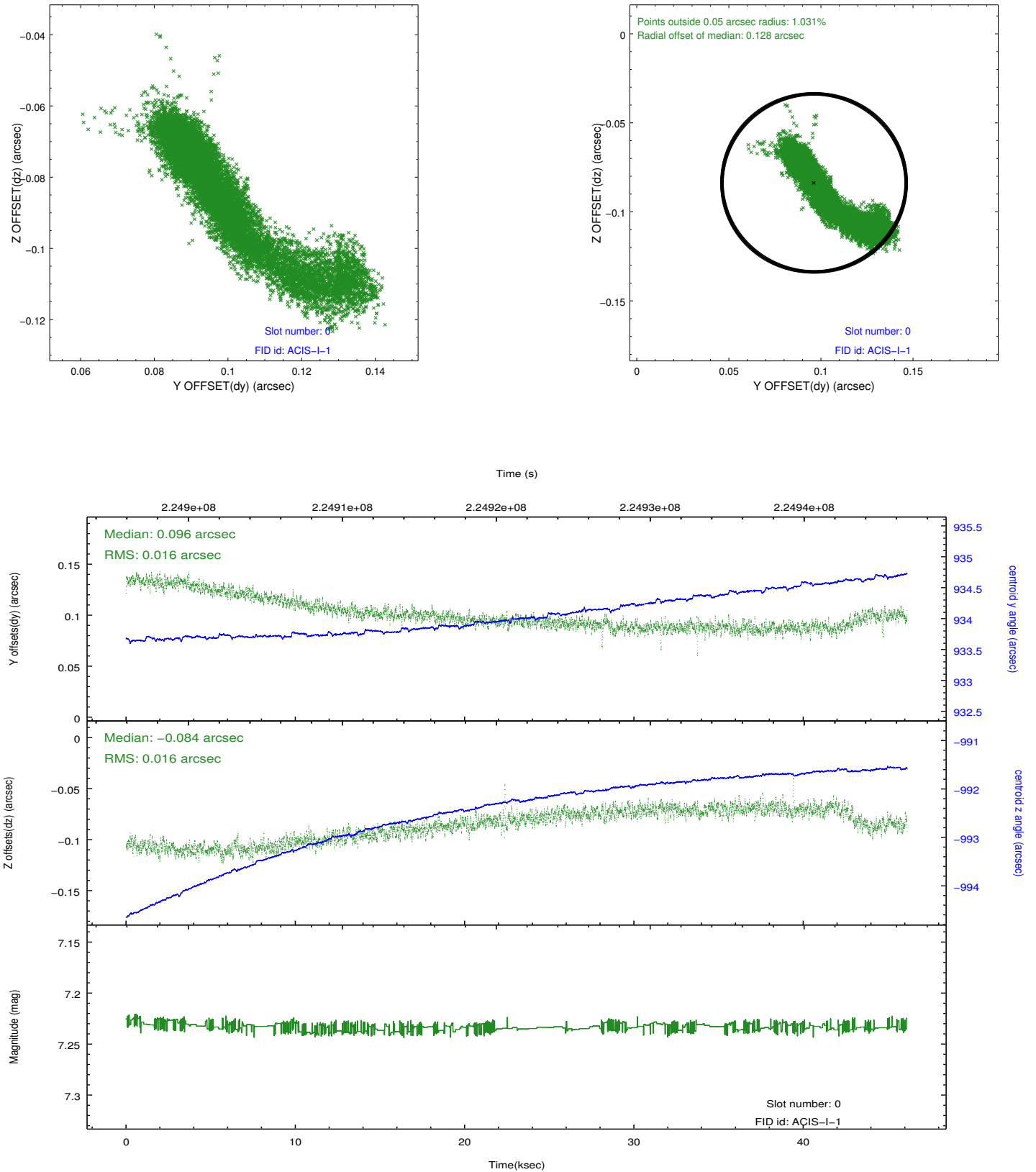


2.4.5 Slot 7

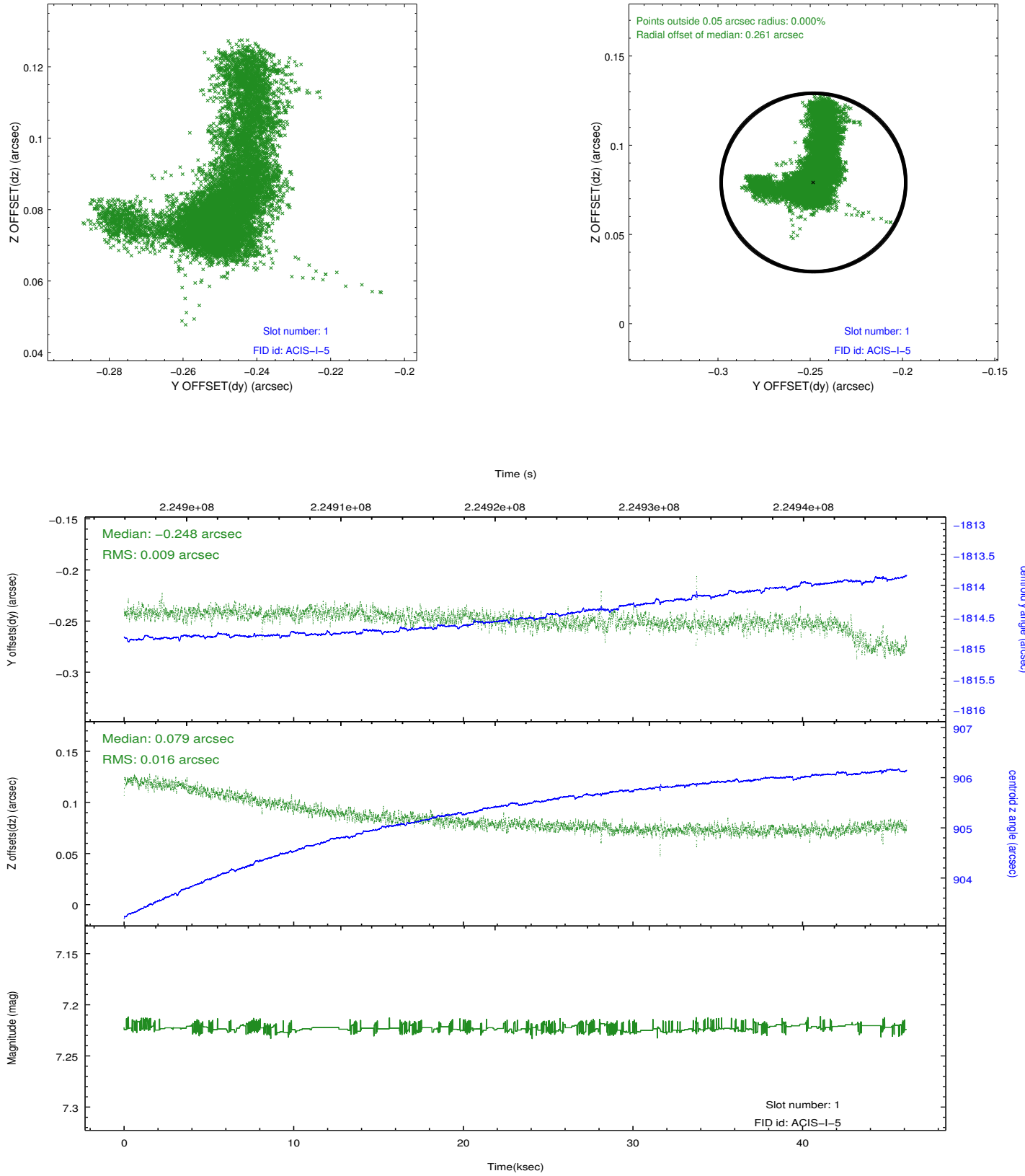


2.5 FID Slots

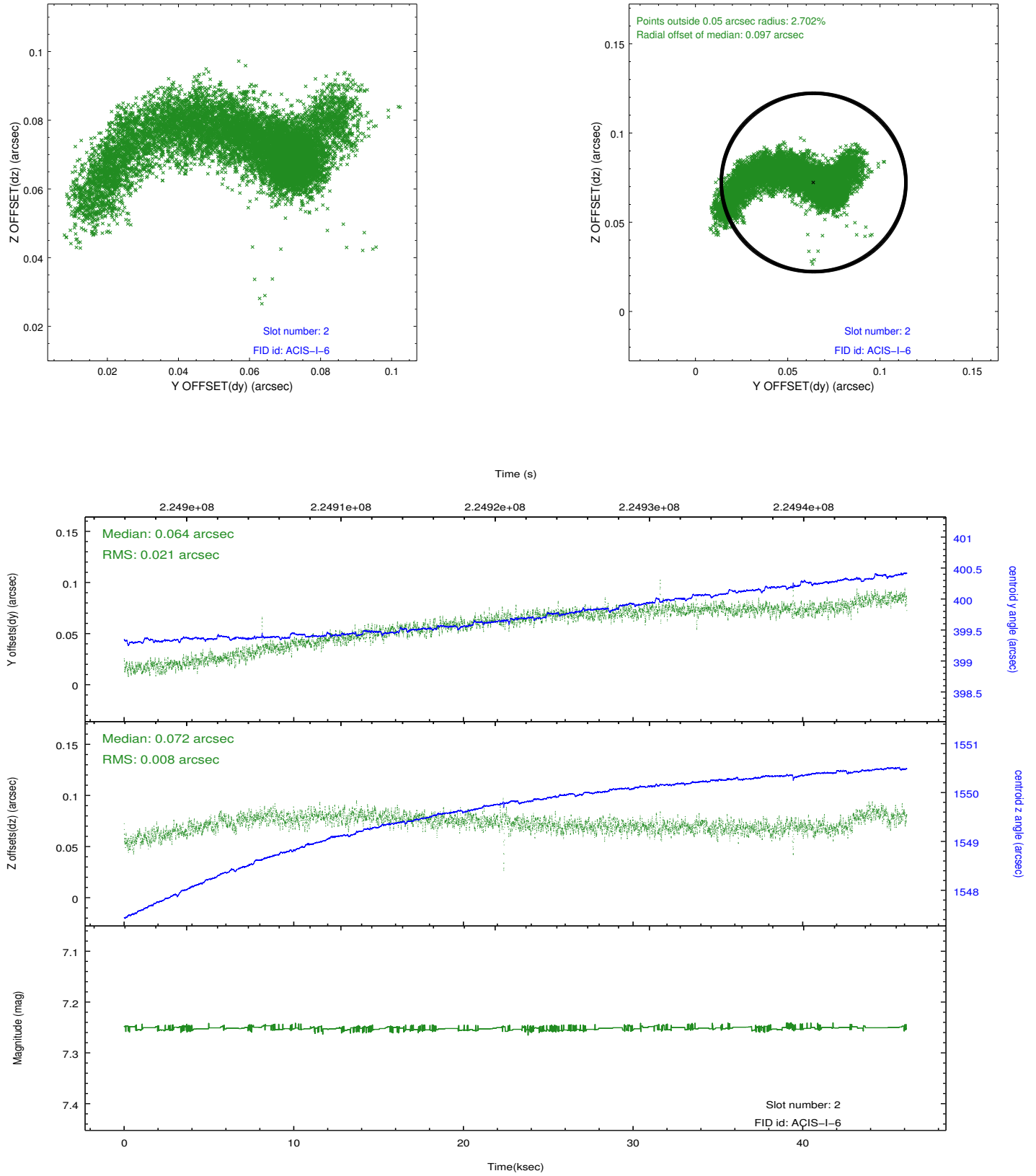
2.5.1 Slot 0



2.5.2 Slot 1



2.5.3 Slot 2



A Summary

A.1 Status

V&V Scientist	Jen Lauer
V&V Date (YYYY-MM-DD)	2013.01.10
V&V Edition	1
V&V Disposition and Status	OK
V&V Charge Time	45.75889

A.2 Comments